

Please read this manual carefully first in order to get the most out of your Discovery Kids Wrist Cam Watch.

Your Wrist Cam Watch can be used as a low-resolution digital camera and as a web cam (to chat over the Internet). This camera is equipped with a 16Mb built-in ROM, therefore you are able to use it to take up to 152 low-resolution photos (under QCIF mode and high compression).

Please note that in order to speak with friends and colleagues over the Internet, you will need a PC headset and microphone. Any standard PC headset will operate with this digital camera and is available at your local computer retailer.

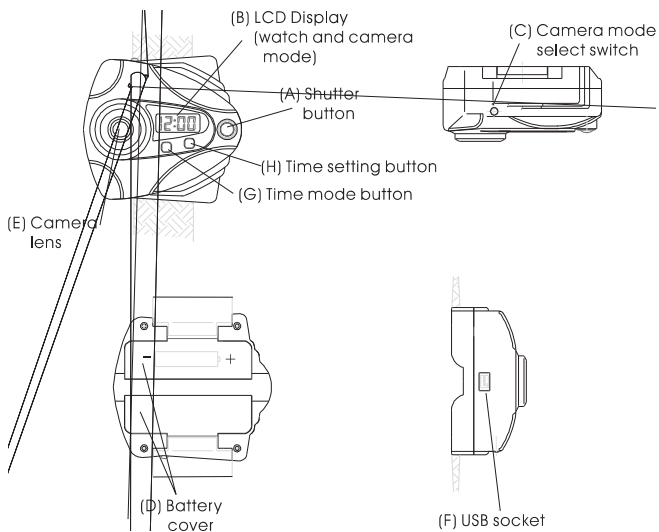
Table of Contents

| | |
|---|----|
| About Your Wrist Cam Watch | 4 |
| Computer System Requirements | 5 |
| Installing or Replacing the Batteries | 5 |
| Getting Started..... | 7 |
| Wrist Watch Cam Modes | 7 |
| To Turn Off the Camera..... | 8 |
| To Set the Time..... | 9 |
| Using Your Camera | 10 |
| Taking Photos | 10 |
| Deleting Photos | 12 |
| Your Photo Options | 13 |
| Storage | 13 |
| Resolution..... | 14 |
| Compression..... | 14 |
| Fluorescent Lamp Frequency | 14 |
| Installing the Software..... | 15 |
| Downloading Photos | 19 |
| Recording Video Clips | 22 |
| Using Your Camera as a Web Cam..... | 23 |
| Troubleshooting..... | 25 |
| Technical Specifications | 27 |
| Warranty..... | 28 |
| Service | 28 |

About Your Wrist Cam Watch

The following items are included with your Discovery Kids Wrist Cam Watch.

- Digital Camera/Watch
- USB Connector Cable
- CD-ROM Software
- User Manual



Computer System Requirements

- Windows 2000/XP
- Pentium-based PC (or equivalent)
- 80 MB hard disk free space and 32 MB or more RAM
- Available USB Interface
- CD-ROM Drive
- Color display (24 bit or higher recommended)

Installing or Replacing the Batteries

You will need a small Phillips head screwdriver—the type found in a jeweler's or eyeglass kit.

1. Remove the wrist band so you can access the battery compartments.
2. Use a small Phillips head screwdriver to loosen the screw. It is not necessary to remove the screw completely. Each battery cover is hinged. Carefully open the battery cover by swinging the door up toward the center of the unit.

3. Insert 2 "AAA" batteries. Make sure the "+" and "-" ends are inserted correctly, as indicated in the battery compartment.
4. Close each battery cover and tighten each screw.
5. Replace the wrist band.

Note: When the battery power is low you will hear a beeping sound when you press the shutter button. Before you replace the batteries, please make sure to download any photos that may be in the memory of the camera. Any stored images will be lost when the batteries are removed.

- If you do not use this camera for quite a long period, please take out the batteries to avoid the discharging or corrosion of the batteries.
- Please do not put the batteries into a fire to avoid explosion subsequent injury to you or others around you.

Do not mix old and new batteries. Do not mix alkaline, standard (carbon zinc), lithium or rechargeable (nickel cadium) batteries.

- Non-rechargeable batteries are not to be recharged.
- Only batteries of the same equivalent type as recommended are to be used.
- Batteries are to be inserted according to the correct polarity (+ and -). Incorrect insertion can damage the unit, provoke fire or cause the batteries to explode.
- Dead or exhausted batteries are to be removed from the toy.
- Do not attempt to open batteries.
- The supply terminals are not to be short circuited.
- Batteries are harmful if swallowed. Keep out of reach of young children.

- Dispose of batteries safely, following guidelines for your area.

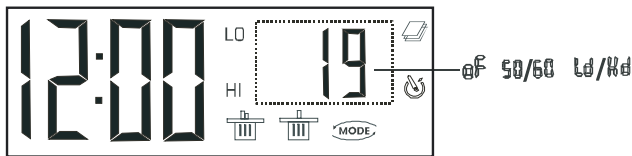
Auto Energy-Save Mode

In order to conserve battery power, if the camera is not used within 30 seconds after turning it on, the camera will automatically enter into energy saving mode. This will prolong the life of the batteries. To wake up the camera from the energy saving mode, simply press the CAMERA MODE button.


Getting Started

When you start the camera mode, the LCD display will show the resolution status (HI/LO) for 3 seconds and then show the remaining number of photos you may take.

Wrist Watch Cam Modes



The CAMERA MODE select button lets you select the functions of the digital camera. Press the CAMERA MODE select button repeatedly to scroll through and select a particular mode. The following function icons will appear on the LCD display. Below is a description of each function and its icon:

| | |
|---|---|
| 12:00 | Clock mode |
| " | Turn camera off |
|  " | Self timer |
| " | Continuous shoot mode |
| """" | Delete All |
| " | Delete last photo |
| " | Hi - CIF mode (100k pixels resolution) |
| " | Lo - QCIF mode (25K pixels resolution) |
| 72182" | 50Hz or 60Hz fluorescent lighting frequency |
| J f" | High compression ratio (higher compression means you may store more photos) |
| Nf" | Low compression ratio" |

Note: When scrolling through the CAMERA MODE, if you do not press any button within 5 seconds, the LCD display will jump back to the counter and the LCD screen will display how many photos there are left for you to take.

To Turn Off the Camera

1. Press the CAMERA MODE select button to select the " " shown on the LCD display.
2. Press the Shutter button within 5 seconds to turn off the camera.
3. The " " will disappear from the LCD screen and the time will display.

To Set the Time

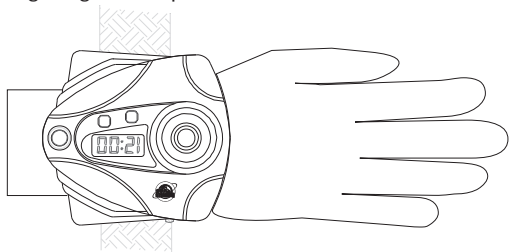
The Wrist Cam Watch has a 12 hour time display.

1. Press the MODE button to choose your setting. Press it the following number of times according to which display you want to set:
 - a. Two times to enter the month
 - b. Three times to enter the date
 - c. Four times to enter the hour ("A" =AM/"P"=PM)
 - d. Five times to enter the minute
2. Use the SET button to scroll through and select the correct numbers or setting.
3. Press the MODE button to enter your setting. It will automatically prompt you to enter the next setting. Continue to use the SET button to enter the correct number or setting.

Press the MODE button to finish. The LCD will return to a 12 hour time display.

Using Your Camera

When taking pictures, aiming the lens as shown here will allow the lens to record your images right side up.



When you wear the Watch Cam on your hand, pay attention to the LENS IMAGE direction when taking your photos. To achieve the best clarity, make sure that the distance between the camera and the subject is 5'.

Taking Photos

1. Press the CAMERA MODE select button one time to activate the camera. The LCD display will show the number of photos you can take before having to download them to your PC.
2. Point your wrist toward the image you would like to shoot. Try to center the lens in front of the image.
3. Hold the camera steadily and press the shutter button to take a photo. You will hear the camera "beep" once the photo has been taken. The LCD display will count down each time you take a photo. It will display how many pictures you have remaining to take.

4. When the digital camera is at full capacity, the LCD display will show "0" photos left to take. You will hear the camera "beep" twice. You will not be able to take any more photos.
5. Before you can take any more photos you will need to follow the instructions to download your photos or delete them.

Note: When taking photos, the louder "beep" indicates a successful photo shot and a low sounding "beep" will indicate the last photo taken was not taken properly.

Auto-Shoot Mode

1. Press the CAMERA MODE select button to select " " shown on the LCD display.
2. Press the Shutter button within 5 seconds to activate the 10 second timer. The camera will beep once every second.
3. After 10 seconds, the camera will beep twice to indicate that the photo has been taken.

Continuous Shoot Mode

The photos taken by Continuous Shoot Mode will be saved as an AVI format in the appointed place. You may open it directly from the photo download software. See Downloading Photos for details.

1. Press the CAMERA MODE select button to select " " shown on the LCD display.
2. Press the Shutter button within 5 seconds to activate the

continuous shooting mode and do not release the Shutter Button until you want to stop shooting. The camera will beep once for each photo taken till the Shutter button released or the memory is full.

3. Under the continuous shooting mode, the photos are taken in CIF & QCIF modes and saved as a video format.

Note: Under the Continuous Shoot Mode, the shooting may fail due to poor lighting. If so the continuous shooting will stop. If this happens you should adjust the lighting or try shooting with a lower resolution setting.

Deleting Photos

You can delete photos individually or all at once. There are two different trash can icons that indicate which option you have selected. Pay close attention to which icon you have selected so you delete the right amount of photos.

All Photos

1. Press the Camera mode select button to select the " " icon shown on the LCD display. As you scroll through the icons this will be the first trash can that appears. You will recognize it because it has two handles on the lid.
2. Press the Shutter button and the photo counter will flash. Within 5 seconds press the Shutter button again. This will delete all the photos stored in the memory.

Single Photo

1. Press the Camera mode select button to select the " " icon shown on the LCD display. As you scroll through the icons this will be the second trash can that appears. You will recognize it because it has one handle on the lid.
2. Within 5 seconds press the Shutter button once. This will delete the last photo taken.

Your Photo Options

Storage

The number of photos that can be taken by the camera will vary upon the selection of resolution and compression. When the resolution and compression modes are changed, the number of photos you can take will change. Please refer to the list below to find out how many photos you may take.

| Resolution | Compression | Photos |
|-------------------|--------------------|---------------|
| Hi | Ld | 19 |
| Hi | Hd | 38 |
| Lo | Ld | 76 |
| Lo | Hd | 152 |

To check the selected the resolution and the number of photos you may take, press the CAMERA MODE select button once. The LCD screen will display either "HI" or "LO" and a number.

Resolution

The resolution status will always show on the LCD display in small characters to the right of the time display. "HI" means CIF mode 352 x 288 Pixels, "LO" means QCIF mode 176 x 144 pixels. The HI mode will allow you to take 19 photos and the LO mode will allow you to take 76 photos.

1. Press the CAMERA MODE select button to select icon on LCD display.
2. Press the shutter button once to switch between the HI mode or the LO mode.

Compression

There is high density ("Hd") or low density ("Ld") compression ratio selection for photos stored in the memory.

Selecting Ld

Press the CAMERA MODE selection button to check the current compression selection. If the LCD shows "Hd" it means the present compression is "Ld". If the LCD shows "Ld", press the Shutter button to change it to read "Hd".

Selecting Hd

If the LCD shows "Ld" it means the present compression is "Hd". If the LCD shows "Hd", press the Shutter button to change it to read "Ld".

Fluorescent Lamp Frequency Selection

Normally 60Hz fluorescent lamp frequency is used in United States and most of Asia and 50Hz is used in Japan and Europe in United States and

should set the fluorescent lamp frequency to that in your region.

Selecting 60Hz

Press the CAMERA MODE selection button to check the current frequency selection. If the LCD display shows 60 it means the present frequency is set for 50Hz. Press the Shutter button to change the frequency to 60 Hz.

Selecting 50Hz

If the LCD shows 50 it means the present is set for 60Hz. Press the Shutter button to change the frequency to 50Hz.

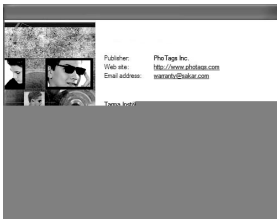
Installing the Software

Important: Before attempting to install the software, make sure that you do not have the camera or the USB cable attached to your computer. This may cause your installation to fail. Do not connect the cable to the computer until the entire installation process has been completed. Please follow the step by step instructions that appear on the screen.

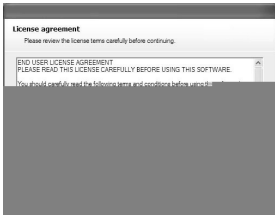
1. Insert the CD into your CD-Rom drive. Make sure your camera is not connected to the computer.
2. On the "Install your camera software" screen, select your camera model from the drop down list and click the "Install" button to install Spy Shot Photo Manager followed by the installation of PhoTags WebCam Express.



3. On the "Spy Shot Photo Manager" screen, click the "Next" button.



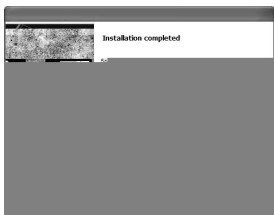
4. Please review the license terms and click the "Agree" button to continue.



5. Let the "Spy Shot Photo Manager" installer create the folder where the program will be installed, and then click "Install".



6. Click "Finish" to let the "Spy Shot Photo Manager" installer finish the installation program.



7. This will automatically launch the Install shield for the camera driver. Click "Next" to continue.



8. Once the program has finished installing you will have to restart your computer.

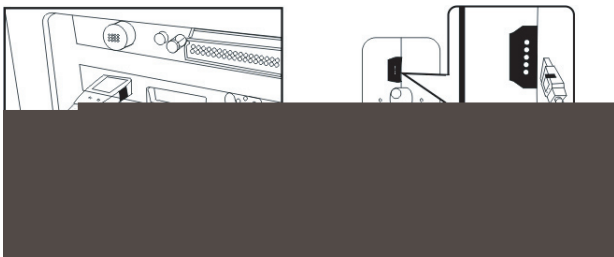


9. When you receive this message you have successfully installed the "Spy Shot Photo Manager" software, the "PhoTags WebCam Express" and the Camera driver.

Downloading Photos

Before downloading your pictures make sure you have installed the software from the CD. Download your photos as often as possible. Photos may be lost when the batteries run low. Use the "Spy Shot Photo Manager" program to import photos from your camera.

Connecting to your computer



1. Plug the labeled end of the USB cable into the socket marked on your computer. This is normally located on your computer hard drive. If the port is not labeled, see your computer users guide.
2. Plug the other end of the USB cable into the port your camera.
3. Make sure that your camera is connected and turned on.
4. Double-click the "Spy Shot Photo Manager" icon that is on your desktop to launch the "Spy Shot Photo Manager" program.



5. Click on the "Get Photos" button on the Main Menu.



6. The "Get photos from Spy Shot camera" window will appear, with the correct name of your camera device selected in the "Active devices" list in the "Express" mode. Click the "Next" button to proceed. NOTE: for Win XP users- the "JL 2005A Camera" device name appears twice on the "Active device list". If the selected device does not download your photos try selecting the second "JL 2005A Camera" device name.



8. The photos you have just imported will appear in the "Select Photos" mode's main window.

Recording Video Clips

You can use your Wrist Cam Watch to capture short movies called AVI files. The length of time you can record an AVI while the camera is connected to your computer will vary, depending on how much hard drive space you will use to save the file. Please take note that these AVI files take up a lot of hard drive space. This is done through the PhoTags WebCam Express program. This next section will walk you through capturing an AVI file.

1. Double-click the "**WebCam Express**" icon that is on your desktop to launch the "**PhoTags WebCam Express**" program. Adjust your WebCam to the desired position. The screen will display what the WebCam "sees".



2. To add audio to your video, plug a microphone into your computer.



1. Click the "**Capture**" button to start recording the video. The recording elapse time will appear under the video.



2. Click the "**Pause**" button to hold the recording. To continue recording click the "**Capture**" button again.
3. To finish recording click the "**Stop**" button.
4. The videos will be automatically saved into a default directory. You can view them in the "Playback" window.



Note: To learn how to capture JPEG snapshots from your WebCam or from your existing AVI movies, go to the "Take Snapshots" section in the Quick Start help. To change the user settings, go to the "Set User Preferences" section in the Quick Start help.

Using Your Camera as a Web Cam

You can use your Wrist Cam Watch as a webcam to chat with friends and family, sending live video feeds straight to them. In order to use this function you must make sure that you have YAHOO MESSENGER Ver 5.5 or later.

1. Start Yahoo Messenger.



2. Select the "tools" listing on the top of the toolbar. Go to the drop down menu and select the listing for "start my webcam".



3. You will see a window appear with the video that you currently shooting. Now people who have your Yahoo login name will be able to see your video.

Troubleshooting

Question: I have taken photos, but my computer says "No photos in camera." What do I do?

Answer: First, ensure that you have taken photos with your camera. Press the shutter button a few times to take some sample photos and try again. If you still get a no photos error, this indicates that the software was not installed correctly or you may not meet the minimum system requirements. At least a Pentium II 300 MHz, AMD Athlon 300 MHz, or a Celeron 400 MHz or higher, at least 64 MB of RAM. Please note that the older AMD K6 processors will not work. If you have determined that you have pictures in your camera and you meet the system requirements, follow the steps below to reinstall the software.

Software Re-installation:

1. First install the software. Click on Start, Settings, Control Panel and Add/Remove programs. You will need to remove Spy Shot Photo Manager. After removing it, restart your computer. If your camera is connected, disconnect it.
2. Now reinstall the software. Insert the CD that came with your camera. It should automatically run the installation.
3. Restart the computer.
4. Once your computer is back up, plug the camera into your computer's USB port.
5. Right-click on the "My Computer" icon. Select Properties. Click on

hardware and then Device Manager.

If the camera is installed correctly, there will be a category listed for "Imaging Devices" and clicking on the "+" next to it should reveal your camera. If not, you will likely see "Digital Still Camera" under "Other Devices" with a brightly colored marking next to it indicating it is not functioning correctly. Right click on the non functioning device and select uninstall. If a warning pops up, press OK.

6. Restart your computer again. Your camera is now successfully installed.

Question: How do I make sure I don't lose important pictures?

Answer: Your camera uses flash memory which requires a constant electric current to store your photos. Should your camera lose power (for instance if the battery dies or is removed) all stored pictures will be lost. We recommend always downloading your photos to your computer as soon as possible to prevent unintentional data loss.

Question: I have a MAC, will your camera work?

Answer: Unfortunately, the system requirements for our cameras require a Windows operating system. There is no Mac driver available and no current plan to develop.

Technical Support

For technical support issues please visit our website at www.sakarhelp.com. You can find manuals, software, drivers, and FAQ's at the website.

Can't find what you are looking for? Fill out an online ticket and one of our technical support team members will answer your questions.

Or call 877-397-8200 to access our technical support information on the phone. For question on warranty information please email warranty@sakar.com.

Technical Specifications

Product Type: Digital Camera

Electronic Coupling Element: CMOS Sensor 100 K Pixels

Image Resolution: 352*288 Pixels (CIF) 176*144 Pixels (QCIF)

Lens: f=3.6mm F2.4 (55°)

Memory Device: Built-in 1*16Mb (SDRAM)

Memory Capacity: 19 images (CIF)(Lo) 76 images (QCIF)(Lo)

38 images (CIF)(Hi) 152 images (QCIF)(Hi)

Viewfinder: Built-in

Shutter Speed: 1/6-1/15000 seconds

Shoot Mode: Single/ Continuous Photography/ Automatic Shoot/PC Camera

Clock Mode: 12 hour circuit time display.

Automatic Energy Saving: automatically enter the energy saving mode in 30S

Image Process: Automatic Exposure / Automatic White Balance

Working Voltage: AAA 1.5*2/USB 5V

Transmission Interface: USB Interface Revision 1.1

Working Temperature: 0-40°C

Operation System: Windows 98 Edition II/2000/XP

Windows and the Windows Logo are registered trademarks of Microsoft Corporation.

All other trademarks are the property of their respective.

One Year Warranty

This warranty covers for the original consumer purchaser only and is not transferable. Products that fail to function properly UNDER NORMAL USAGE, due to defects in material or workmanship. Your product will be repaired or (at our discretion) replaced at no charge (excluding shipping, handling and insurance charges). Contact Sakar International for details.

Not Covered by Warranty

Damages or malfunctions not resulting from defects in material or workmanship and damages or malfunctions from other than normal use, including but not limited to, repair by unauthorized parties, tampering, modification or accident. Contact Sakar International for details.

What To Do When Service is Required

When returning your defective product (postage pre-paid) for service, your package should include:

1. Copy of the original bill of sale.
2. A detailed written description of the problem.
3. Your return address and daytime telephone number.
4. A check or money order for USD \$7.95 payable to Sakar International to cover shipping, handling and insurance. (Other fees may apply for shipments outside the US, please email, write or call for exact shipping charges.)

MAIL TO:
Customer Service / Sakar International
Attention: Service Department
195 Carter Drive
Edison, NJ 08817

FCC Notice

This device complies with part 15 of FCC Rules. Operation is subject to the following two conditions: (1) This device may not cause harmful interference, and (2) This device must accept any interference received, including interference that may cause undesired operation.

Warning: Changes or modifications to this unit not expressly approved by the party responsible for compliance could void the user's authority to operate the equipment.

NOTE: This equipment has been tested and found to comply with the limits for Class B digital device, pursuant to part 15 of the FCC Rules. These limits are designed to provide equipment generates, uses and can radiate radio frequency energy and, if not installed and used in accordance with the instructions, may cause harmful interference to radio communications.

However, there is no guarantee that interference will not occur in a particular installation. If this equipment does cause harmful interference to radio or television reception, which can be determined by turning the equipment off and on, the user is encouraged to try to correct the interference by one or more of the following measures:

- Reorient or relocate the receiving antenna.
- Increase the separation between the equipment and receiver.
- Connect the equipment into an outlet on a circuit different from that to which the receiver is needed.
- Consult the dealer or an experienced radio/TV technician for help.

Shielded cable must be used with this unit to ensure compliance with the Class B FCC limits.

Under the environment with electrostatic discharge, the product may malfunction and require user to reset the product.



© 2006 Discovery Communications, Inc. All rights reserved.

Windows and the Windows Logo are registered trademarks of Microsoft Corporation. All other trademarks are the property of their respective companies.

Sakar International INC
195 Carter Drive
Edison, NJ 08817

For technical support, please call 877-397-8200