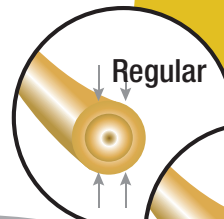




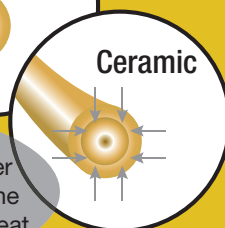
Diffuser



Air Concentrator

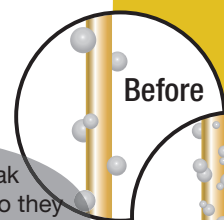


Regular

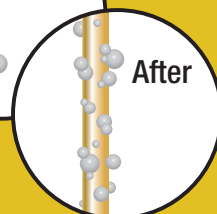


Ceramic

Ceramic's radiant far-infrared heat quickly penetrates the center of the hair shaft to dry hair from the inside out, reducing exposure to heat and preserving its moisture



Before



After

Negative ions break apart water droplets so they can be dried faster or absorbed by hair

235-001 Hairdryer, stepless speed control with LCD display

- 1800 watt
- Ceramic - dries your hair fast, reducing exposure to heat, preserving its moisture
- Ionisation by separate button: prevents static electricity, makes your hair shiny
- Stepless control, touch buttons, of speed and heat settings
- LCD-display showing temperature and speed settings
- Cool shot button
- Incl. concentrator and diffuser
- Soft touch finish
- Detachable back filter - easy to clean
- Overheat protection

product specifications:

art. no.:	235-001
color:	black rubberized
power:	1800 watt
product meas. (HxWxD):	22.5 x 9.2 x 27 cm
gift box meas. (HxWxD):	23 x 10 x 28 cm
netto weight:	0.84 kg
gross weight:	0.92 kg

logistic info:

barcode:	5707442350018
qty. per export carton:	6
20'/40'/40' cont. qty:	3720/7500/8940
export carton size (HxWxD):	47.5 x 32 x 30 cm
export carton gross weight:	5.6 kg