

Register your product and get support at
www.philips.com/welcome

Hair Styler

HP8650

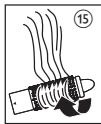
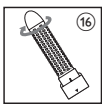
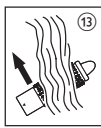
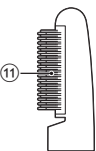
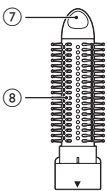
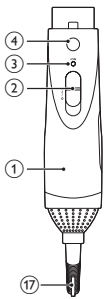
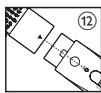
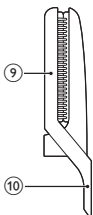
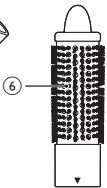
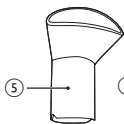
HP8651



EN

User manual

PHILIPS



Congratulations on your purchase, and welcome to Philips! To fully benefit from the support that Philips offers, register your product at www.philips.com/welcome.

1 Important

Read this user manual carefully before you use the appliance and keep it for future reference.

- **WARNING:** Do not use this appliance near water.
- When the appliance is used in a bathroom, unplug it after use since the proximity of water presents a risk, even when the appliance is switched off.
- **WARNING:** Do not use this appliance near bathtubs, showers, basins or other vessels containing water.
- Do not insert metal objects into the air grilles to avoid electric shock.
- Never block the air grilles.
- Before you connect the appliance, ensure that the voltage indicated on the appliance corresponds to the local power voltage.
- Do not use the appliance for any other purpose than described in this manual.
- Only use for drying and styling scalp hair. Do not use the appliance on artificial hair.
- When the appliance is connected to the power, never leave it unattended.
- Always unplug the appliance after use.
- Never use any accessories or parts from other manufacturers or that Philips does not specifically recommend. If you use such accessories or parts, your guarantee becomes invalid.
- If the appliance overheats, it switches off automatically. Unplug the appliance and let it cool down for a few minutes. Before you switch the appliance on again, check the grilles to make sure they are not blocked by fluff, hair, etc.
- Do not wind the mains cord round the appliance.



- If the mains cord is damaged, you must have it replaced by Philips, a service centre authorised by Philips or similarly qualified persons in order to avoid a hazard.
- This appliance is not intended for use by persons (including children) with reduced physical, sensory or mental capabilities, or lack of experience and knowledge, unless they have been given supervision or instruction concerning use of the appliance by a person responsible for their safety.
- Children should be supervised to ensure that they do not play with the appliance.
- For additional protection, we advise you to install a residual current device (RCD) in the electrical circuit that supplies the bathroom. This RCD must have a rated residual operating current not higher than 30mA. Ask your installer for advice.

Electromagnetic fields (EMF)

This appliance complies with all standards regarding electromagnetic fields (EMF). If handled properly and according to the instructions in this user manual, the appliance is safe to use based on scientific evidence available today.

Environment

Do not throw away the appliance with the normal household waste at the end of its life, but hand it in an official collection point for recycling. By doing this, you help to preserve the environment.



2 Style your hair

Note: Always let the appliance and attachments cool down before you connect or disconnect the attachments. Let the curls cool down before you comb, brush or finger-comb the hair into its final style.

Do not use the appliance on completely wet hair. Dry your hair with a towel first. The appliance is most effective on towel-dry hair.

Select a suitable attachment for the hairstyle you want.

Hairstyle	Attachment
Dry hair	(HP8651 only) Concentrator (⑤)
Volume and shine	Polish brush (⑪)
Volume or flicks	(HP8651 only) Thermo brush (⑥)
Waves or curls	Retractable bristle brush (⑧)
Straight style	Straightening comb (⑨)

Before you style your hair:

- 1 Snap a suitable attachment onto the styler (① & ⑫).
 - If the bristles are retracted inside the retractable bristle brush, turn the bristle retraction knob (⑦) to extract the bristles (⑬). To retract the bristles, turn the knob in the opposite direction.
 - To disconnect the attachment, press the release button (④) and pull it off.
- 2 Connect the plug to a power supply socket.
- 3 Comb your hair and divide your hair into small sections.
- 4 Slide the airflow switch (②) to ☞ for gentle and warm airflow for slow styling, ☜ for strong and warm airflow for easy styling, or ☛ for strong and hot airflow for fast styling.

↳ **HP8651 only:** The ion function activates with the indicator (③) lighting up when the appliance is switched on. The function provides additional shine and reduces frizz. It is particularly suitable for dry and almost-dry hair.

Make volume and shine:

- 1 Insert the brush pins into your hair.
- 2 Brush the hair downwards from root to end.
- 3 To style the rest of your hair, repeat steps 1 to 2.

Add volume to loose curls or create flicks with HP8651:

- 1 Brush the hair against the direction of hair growth (⑬) until the brush pins touch your scalp, and then remove the brush from your head.

- To create flicks, brush the hair downwards and turn the brush inwards (14) or outwards (15) at the hair tip. Hold the brush in that position for 2 to 3 seconds, and then remove it from your hair.

2 To style the rest of your hair; repeat step 1.

Create waves and curls:

- 1 Wind a section of hair round the brush with the bristles extracted.
- 2 Keep the brush in the position until the hair is dry (max. 15 seconds), and then retract the bristles to remove the brush from your hair.
- 3 To style the rest of your hair; repeat steps 1 to 2.

Straight your hair:

- 1 Place a section of hair between the straightening comb.
- 2 Press the lever (10) and slide the styler down the length of the hair.
- 3 To style the rest of your hair; repeat steps 1 to 2.

After use:

- 1 Switch off the appliance and unplug it.
- 2 Place it on a heat-resistant surface until it cools down.
- 3 Remove hairs and dust from the appliance and attachments.
- 4 Clean the appliance and attachments by damp cloth.
- 5 Keep the appliance in a safe and dry place, free of dust. You can also hang it with the hanging loop (17).

3 Guarantee and service

If you need information or if you have a problem, please visit the Philips website at www.philips.com or contact the Philips Customer Care Centre in your country (you find its phone number in the worldwide guarantee leaflet). If there is no Consumer Care Centre in your country, go to your local Philips dealer.

4 Troubleshooting

Problem	Cause	Solution
The appliance does not work at all.	The power socket to which the appliance has been connected may not live.	Ensure the socket is live.
	The appliance may have overheated and switched itself off.	Unplug the appliance and let it cool down for a few minutes. Before you switch on the appliance again, check the grilles to make sure they are not blocked by fluff, hair, etc.
	The appliance may not be suitable for the voltage to which it has been connected.	Make sure that the voltage indicated on the type plate of the appliance corresponds to the local mains voltage.



© Royal Philips Electronics N.V. 2010
All rights reserved.

Specifications are subject to change without notice.
Trademarks are the property of Koninklijke Philips
Electronics N.V. or their respective owners.

3140 035 20912



100% recycled paper
100% papier recyclé