



MOTO™ WX260/WX290

Getting Started Guide

accessories & more
www.motorola.com

CJB31B0ALAAA
68000202731

Congratulations

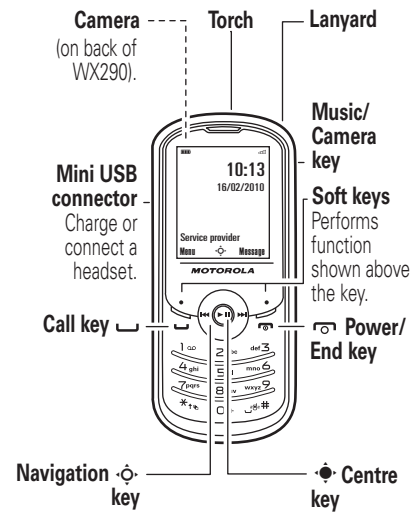
Congratulations on your purchase of the stylish Motorola WX260/WX290 phone. Whether you're a talker, a texter or just love listening to music on the move, the WX260/WX290 does it all.

We've crammed all the main features of your phone into this handy guide—you can even take the guide with you.

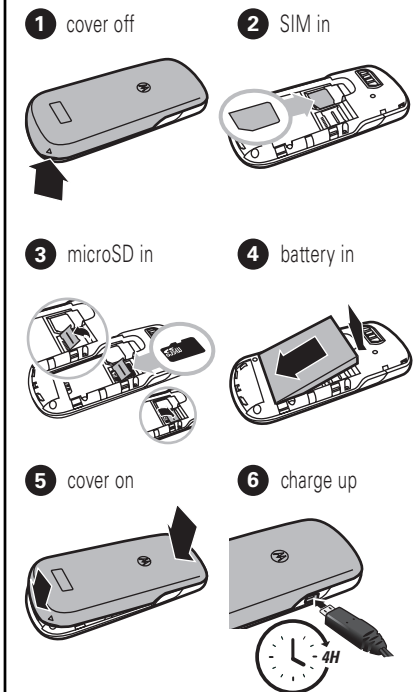
If you'd like even more information about how to use your new WX260/WX290, visit www.motorola.com/support. So, let's go.

Note: Your phone may not look exactly the same as the images in this manual. However, all key locations, sequences and functions are the same.

Your phone

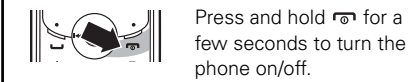


Let's go

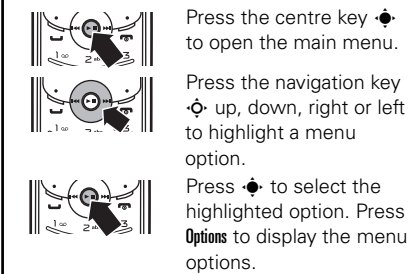


Basics

turn it on & off

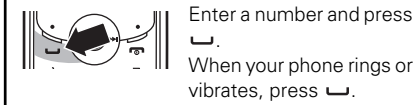


menu navigation



Calls

make & answer calls



end a call



emergency calls

To call an emergency number, enter the emergency number and press the Call key. Your service provider programmes emergency phone numbers, (such as 999 or 112), that you can call under any circumstances, even when your phone is locked. Emergency numbers vary by country. Your phone's pre-programmed emergency number(s) may not work in all locations, and sometimes an emergency call cannot be placed due to network, environmental or interference issues.

Messages

send messages

- Press **Messages** > **Messages** > **Create a text message**.
- Enter your message. **Tip:** Press **Options** > **Input method** to switch text entry modes. Press **Shift** to switch capitalisation modes. Press **Shift** to enter a space. Press **Options** > **Languages** to change language.
- Press **Send**.
- Select **Add number**, enter a number and press **Send** or select **Add from directory** and scroll to a contact. Press **Send** to select a contact.
- Press **Send** to send.

read messages

When you receive a message you will see **1** on your screen. Press **Messages** > **Messages** to open the message. You can reply to the message by pressing **Options** > **Reply**.

Tips & tricks

ring style

To quickly switch your ring style, press and hold **Ring** from the home screen.

keypad lock

To quickly lock your keypad, press and hold **Lock** from the home screen. Press and hold **Lock**, then **Ok** to unlock.

torch on

To quickly turn on your torch, press and hold **Torch** from the home screen.

voicemail

Press and hold **1**. If your voicemail number is pre-set, you will be connected.

recent calls

To see your dialled, received and missed calls, press **Recent calls** from the home screen.

Music player

To use the music player, insert a microSD memory card, which is an optional accessory. The music player supports MP3, MIDI and AMR music file formats.

play music

From the home screen, press **Music** > **Music player** > **All songs**.

Tip: To quickly turn on press **Music** (WX260).

music player controls

function	
play/pause	Press Play/Pause .
fast forward	Press & hold Fast Forward right.
skip to next/ previous song	Press Next right or Previous left.
rewind	Press & hold Rewind left.
volume	Press Volume Up or Volume Down .

Note: To transfer songs to/from your memory card, use a microSD memory card reader on your computer to drag & drop files to the "Audios > Music" folder.

Main menu

- Fun**
 - FM radio*
 - Games
- Music player**
 - All songs
 - My star list
 - Folders
 - Album
 - Artist
 - Genre
 - Update songs
- File manager**
- Directory**
- Messages**
 - Messages
 - Voice message
 - Voicemail
 - Settings
- WAP**
 - Homepage
 - Bookmarks
 - Recent pages
 - Offline pages
 - Go to URL
 - Profiles
- Profiles**
 - General
 - Vibration
 - Outdoor
 - Silence
 - Flight mode
- FM radio ****
- Camera ***
- Bluetooth**
- Settings**
 - Colour
 - Display
 - Clock
 - Keys
 - Call register
 - More settings
- Services *****
- Tools**
 - Calendar
 - Alarm
 - Calculator
 - Fake call
 - Converter
 - Voice memo
 - Memory status
 - My shortcuts

This is a standard main menu layout. Your phone's menu may be a little different.

* WX290 only
** WX260 only
*** Network dependent

Contacts

save contacts

- Enter the number on the home screen and press **Save**.
- Enter the contact details and press **Save**. **Tip:** Press **Options** > **Directory** > **Options** > **Default storage** to choose where to save your contacts (To SIM or To phone).

call contacts

- Press **Options** > **Directory**.
- Press **Up** or **Down**, to scroll through the list to highlight the contact's number. **Tip:** Press **Right** or **Left** to change category (General, Most called, SIM directory, Phone directory or Group).
- Press **Call**.

Personalise

set your wallpaper

Change the wallpaper to one that makes you smile.

Find it: **Options** > **Settings** > **Display** > **Wallpaper**

set time & date

Set the time & date shown on your home screen.

Find it: **Options** > **Settings** > **Clock** > **Set time/date**

set ringtone & volume

Play it loud or keep it quiet, you choose.

Find it: **Options** > **Profiles**

Choose from the pre-programmed profiles, including, **General**, **Vibration**, **Outdoor**, **Silence** and **Flight mode**. Press **Options** to edit a profile.

create shortcuts

Choose the features you want to access with a single key press from the home screen—really useful stuff.

Find it: **Options** > **Tools** > **My shortcuts** > **Add** > **Functions** > **Keys**

Photos

Note: You can only take photos with WX290.

- Press **Options** > **Camera** > **Camera**. **Tip:** To quickly turn on your camera, press **Camera** on the side of your phone.
- Press **Options** to take your photo, then to:
 - Set as your wallpaper press **Up**.
 - Send by Bluetooth press **Down**.
 - Send by MMS press **Left**.
 - Assign as contact press **Right**.
 - Delete press **Delete**.
 - Return to the viewfinder press **Back**.

Tip: To set where your photos are stored press **Options** > **Storage** > **Phone** or **Memory card**.

To transfer photos to/from your memory card, use a microSD memory card reader on your computer to drag & drop files to the "Images" folder.

Radio

listen to the radio

Plug a mini-USB headset into your phone.

Note: The FM radio works only when the headset is plugged in.

- Press **Options** > **Fun** > **FM Radio** (WX290) or **Options** > **FM Radio** (WX260) from the home screen.

To tune in a station, press **Left** or **Right**. To adjust the volume, press **Up** or **Down**. To turn off the radio, press **Options** > **Turn off**.

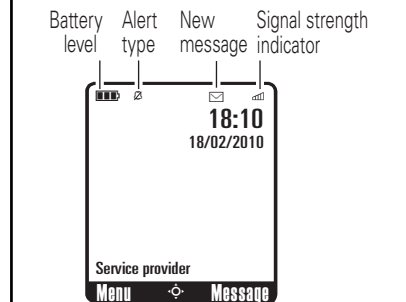
store favourite stations

When listening to a station, press **Save** > **Ok**. Select a channel number and press **Add** to store it.

Press **Options** > **Channel list** to see your stored stations. Press keys **1** to **40** to select a stored station.

Home screen

The home screen is displayed when you turn on the phone. Status indicators can appear across the top of the home screen:



Note: Your phone's home screen may be different from the one shown.

