

EXPRESS SERVICE MANUAL

SMT600, SMT1100, SMT Portables and Accessories

You have just purchased the best spray washer on the market today. It incorporates the very latest in technological advances. To assure you the best and safest performance as well as longest equipment life, please read the enclosed information.

After reading the material in this manual, should you have a service problem or need help, please call our toll free number **1-800-548-3373** or **(479)636-5776**.

TERMS: All parts will be shipped with check in advance or C.O.D. Commercial accounts are allowed 15 day terms from date on invoice with approved credit.

FREIGHT: All freight will be paid by the customer. Special consideration will be given to items under warranty coverage.



IMPORTANT DOCUMENT - DO NOT DISCARD

Model Number	Serial Number	Date Purchased
--------------	---------------	----------------

NOTE: Specifications found in this manual subject to change without notice.
FOR COMMERCIAL USE ONLY

Contents

Returned Goods Policy.....	2
Receiving.....	2
Express Service Program.....	3
COMPONENT REMOVAL - Group 1.....	3
COMPONENT REMOVAL - Groups 2-6.....	4
Diagnostic Chart.....	5-7
Spray Gun.....	7
Model SMT 600W.....	8
Model 1100W.....	9
Model SMT 600PE.....	10
Model SMT 1100PE.....	11
Model SMT 600PEW.....	12
SMT 300HDR.....	13
SMT 200RWW.....	14
Hummer Jet Sr.....	15
Hummer Jet Jr.....	16

Returned Goods Policy

Any item returned for warranty consideration or for credit must have a **RETURN AUTHORIZATION NUMBER**. Call our Customer Service Department and discuss the nature of your request. Please note that all items returned must be returned F.O.B. Rogers, Arkansas. No collect or C.O.D. shipments will be accepted unless prior arrangements with our Customer Service Department have been made. A restocking fee may be applied to items for credit that are not under warranty. To reach our Customer Service Department call **(800) 548-3373** or **(479) 636-5776**, or write to Spray Master Technologies®, 115 E. Linden St., Rogers, Arkansas 72756.

Receiving

Damage: Report any damage to the shipping carton or contents to the freight carrier. File a claim with the carrier within 10 days if damage is evident. The manufacturer is not responsible for damage to the equipment caused by the freight carrier.

Package Contents: Carefully check the contents of the shipping cartons to ensure the contents agree with the packing list. If items are missing or if you have any questions, please call our customer service department at **(800) 548-3373** or **(479) 636-5776**.

SMT WARRANTY – LIMITED Effective May 16, 2014

Parts – Spray Master Technologies warrants parts for wall mounted and rack mounted 600 series and 2000 series units to be free from defects in material or workmanship for a period of 2 years from the date of shipment from the factory excluding items listed below.

Spray Master Technologies warrants parts for all other units (wall mounted 1100 series and all portable units) to be free from defects in material or workmanship for a period of 1 year from the date of shipment from the factory excluding items listed below.

This warranty is limited to the original purchaser and includes repairing or replacing parts which manufacturer's investigation shows to be defective at the time of shipment from the factory. All parts subject to this warranty shall be returned F.O.B. Spray Master Technologies, Rogers, Arkansas for examination, repair, or replacement.

Excluded Items – The follow items are excluded: spray guns, wands, hoses, nozzles, Hummer Jet Sr & Jr, casters and handles. These items are covered by the above warranty for 90 days from the date of purchase for defects in materials or workmanship.

Labor and Travel – Labor and travel to repair or replace defective parts shall be covered for a period of 1 year from date of shipment (90 days on the excluded items).

Items Voiding Warranty – The following voids all warranty claims on Spray Master Technologies products: Accidental breakage; abuse; misuse; failures caused by incorrect installation (if not factory installed); failure to correctly wire the system at the electrical source; chemical or mineral buildup in the pumps and water lines caused by untreated or unfiltered tap, hard, or recaptured water; excessive hot water temperatures exceeding 120° Fahrenheit (49° Celsius); using bleach as an injected chemical; or using hydrogen peroxide as an injected chemical.

www.spraymastertech.com

Phone: (479) 636-5776 • Fax: (479) 636-3245 • 115 E. Linden • Rogers, Arkansas 72756 USA

Express Service Program

If you have a problem, we can solve it QUICKLY and EFFICIENTLY. Your Spray Master Technologies pressure cleaning system has been designed for rapid and easy repairs. Some, you can do, others we will do.

With the "EXPRESS SERVICE" program, your machine has been divided into six major component groups. These groups consist of:

- Group #1: Pump, Unloader, Injector, In/out hoses**
- Group #2: Motor, Switch, and Cord Set**
- Group #3: Float Tank Assembly**
- Group #4: High Pressure Hose**
- Group #5: Spray Gun Assembly**
- Group #6: Accessories and Miscellaneous Parts**

Like circuit boards on a computer, these groups can be exchanged as a complete unit. The advantage is your savings in time and money.

With a toll free call to experienced service technicians at Spray Master Technologies, the problem can usually be diagnosed to one of the six component groups by answering a few questions.

The person doing the parts replacement doesn't need to have any equipment knowledge. He/she need only be able to loosen and tighten a few bolts. The "Express Service" exchange program eliminates having an inexperienced person trying to repair a complicated part.

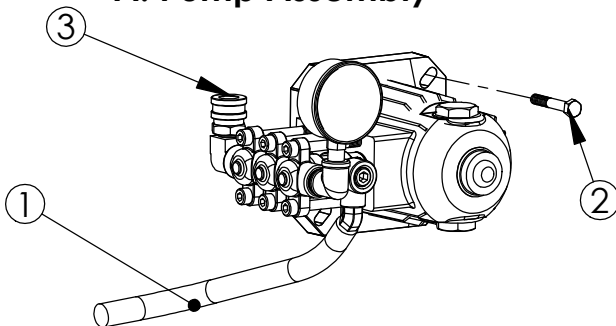
If you do your own "GROUP" exchange, you won't be paying for those high labor rates and expensive service calls. With a few basic tools, the defective component group can be removed and replaced or sent to the factory for repair by a qualified technician with minimum downtime. To further expedite the repair, either you or your dealer can stock spare components "groups". However, with express mail services, rarely does it take more than 48 hours to receive a component. This is usually faster and less expensive than many service companies can make a service call.

The enclosed information shows all components groups and accessories. Our trained personnel are ready to help. If you need service, try our "EXPRESS SERVICE" plan. It will save you time and money.

COMPONENT REMOVAL - Group 1

WARNING: Disconnect Power Before Servicing

Group #1 A. Pump Assembly

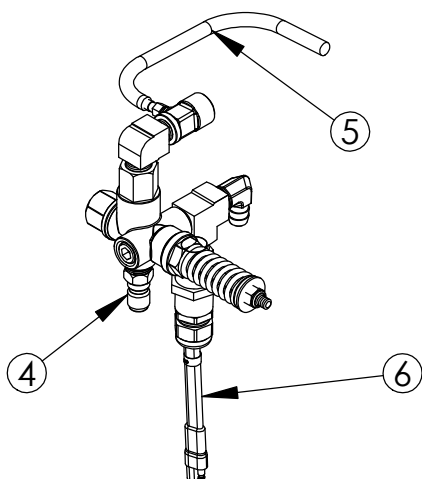


Pump Problems ?

To remove the pump, simply disconnect the water inlet hose (#1), remove the 4 mounting bolts (#2), and disconnect the unloader at the quick coupler (#3).

NOTE: If in doubt-send unloader with pump for a complete system check

B. Unloader & Chemical Injector



Unloader Problems?

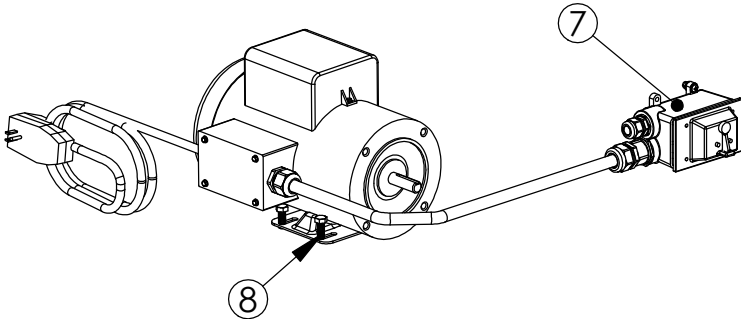
To remove the unloader, disconnect quick coupler at pump (#4), remove hoses (#5), and disconnect any electrical leads (#6) if present.

NOTE: Send with pump if pump needs repair, on model series 600 and 1100. Include accessories such as thermal switches, relief valves etc...

COMPONENT REMOVAL - Groups 2-6

WARNING: Disconnect Power Before Servicing

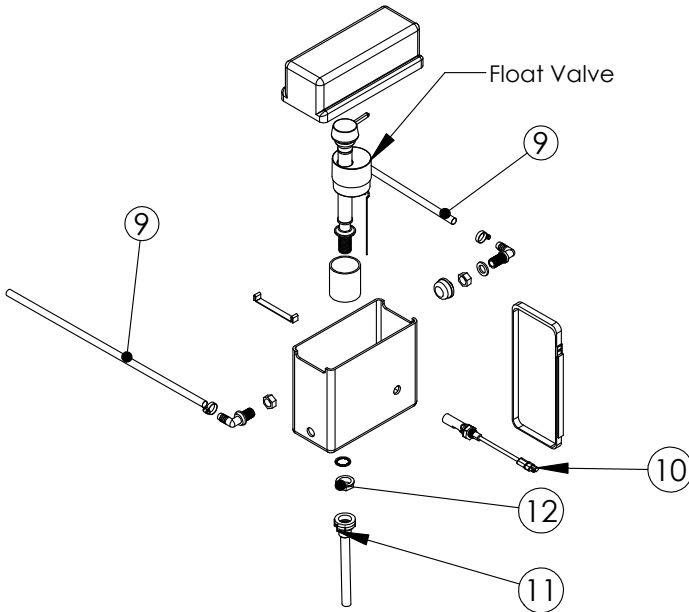
Group #2 A. Motor, Switch and Cord Set



Motor Problems?

To remove, slide pump assembly (Group #1 above) off motor shaft, disconnect switch leads from switch box (#7) or send with box, remove the 4 motor mount bolts (#8)

GROUP # 3 A. Float Tank Assembly



Float Tank Problem?

To remove, disconnect hoses (#9) from unloader and pump. Disconnect float switch wire lead, (#10) if applicable. Disconnect water inlet hose (#11), then remove retaining nut (#12)

GROUP # 4, #5, #6

4. High Pressure Hose

Hose problems?

Remove quick couplers and spray gun assembly

5. Spray gun Assembly

Spray Gun Problems?

Remove spray gun from hose. Return with wand and nozzles

6. Accessories

Accessories Problems?

Remove and replace as necessary.

NOTE: All components should be returned to the factory for repair or exchange as shown in the above drawings. No in-field service other than component removal and re-installation should be attempted.

DIAGNOSTIC CHART

Wall Mount System Diagnostic Chart

SMT 600W, 1100W,

Preliminary Checks: Check the following items to ensure that any problems with operation are not caused by conditions external to the SMT Wall Mount system.

1. Circuit Breaker in the main panel is reset.
2. Water supply hose bib is fully open.
3. Water supply temperature is less than 120° F.

Check all wiring to ensure all connections are secure and no wires have been damaged. Verify the wiring is correct in accordance with the wiring diagram provided.

Symptom	Source	Reason	Corrective action
System Won't Operate			
System won't operate	Float switch	obstructed movement	remove obstruction
		open contacts	replace float switch
	Thermal limit switch	water too hot	decrease water temperature
		loose connection	secure connection
		open contact	replace thermal switch
	GFCI power cord	tripped GFCI	reset
Motor	thermal overload switch is tripped	reset or replace thermal overload switch	
	motor windings bad	replace motor	
Intermittent Shut-down			
Intermittent shut-down, Shuts down after 30 minutes of operation	NORMAL OPERATION	System is designed to shut down after 30 minutes of operation	Press "ON" button on remote station touch-pad
Intermittent shut-down, shuts down in less than 30 minutes, but can restart immediately	Water supply pressure to low	trips float switch	open water supply valve fully, clean water supply filter,
Intermittent shut-down, shuts down in less than 30 minutes. Remote stations loose power and cannot restart for 10 to 15 minutes.	Water supply temperature above 120° F	trips thermal limit switch	reduce water supply temperature
Intermittent shut-down, shuts down in less than 30 minutes. Remote stations have power but cannot restart for 15 to 30 minutes.	Motor thermal overload switch	blocked motor fan	remove obstruction
		pressure too high	adjust unloader for lower operating pressure
		weak motor	replace motor
Low Pressure			
Low pressure (always)	Pressure gauge	defective reading	replace gauge
	Hoses	air leak at pump intake	tighten hose clamps or replace hose
	Bulb filter (inside tank)	clogged	clean and replace
	Nozzle	wrong size or worn	replace nozzle

(continued on next page)

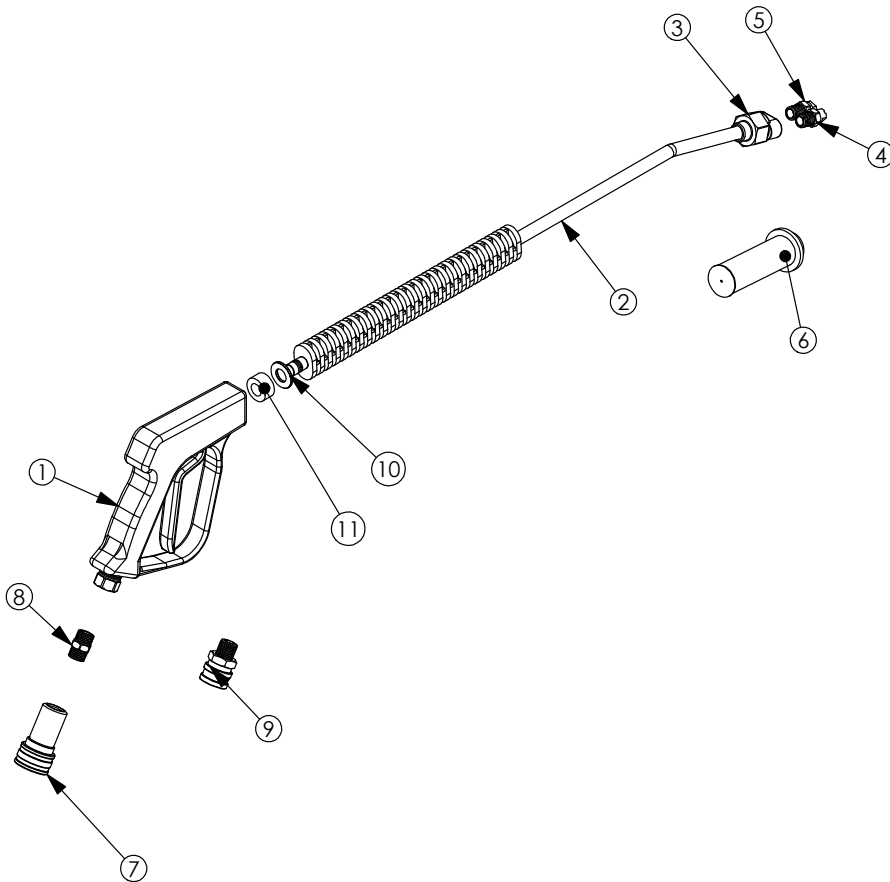
DIAGNOSTIC CHART (CONT.)

	Unloader	maladjusted	adjust unloader for pressure gauge indication of 50PSI less than "MAX PRESSURE" indicated on pump-head
		worn	replace unloader
Low Pressure (when soap or sanitize selected)	Pump	worn valves and seals	rebuild pump or return to factory
	Chemical supply	no chemical, sucks air	refill chemical supply
Low Pressure when spraying (high pressure when not spraying)	hoses	air leak at input to chemical solenoids	tighten hose clamps or replace hose
	Line pressure release valve	stuck open	clean Line Pressure Release solenoid valve
		damaged solenoid plunger	rebuild Line Pressure Release solenoid valve
No Chemical			
No Chemical at any remote station	Chemical supply	no chemical	refill chemical supply
	Chemical control Micro-switch (older machines)	maladjusted	adjust so that micro-switch is activated when spray gun is open and deactivated when spray gun is off
	Chemical control Flow-switch	stuck	clean or replace
	Chemical pick-up tubing	air leak	tighten hose clamps or replace hose
		kinked tubing	straighten tubing
	Chemical foot-screen	clogged	flush with hot water or replace
No Chemical at one remote station only	Remote station	loose connection	secure connections
		clogged	clean or replace
		loose wires	secure connection
		defective circuit board or touch-pad	replace circuit board and/or touch-pad
	Chemical injector (SMT1100 only)	clogged or sticking check valve	clean or replace
Excessively High Pressure			
Gauge pressure exceeds maximum listed on pump head	Pressure gauge	faulty indication	replace gauge
	Nozzle	wrong size or blocked	replace with correct size or remove obstruction
	Unloader	maladjusted	adjust unloader for pressure gauge indication of 50PSI less than "MAX PRESSURE" indicated on pump-head
	Spray gun	partially opened or clogged	clean or replace

DIAGNOSTIC CHART (CONT.)

	Quick Connect fittings	partially opened or clogged	clean or replace
	Hoses	restricted	clean or replace
Burnt Contactor			
Contactor, burnt contacts	Line voltage	too low	Check electrical power by electrician
		drops under load and stays low	Check electrical power by electrician
		Drops under initial load	Check electrical power by electrician
	Relay K1 or K2	defective relay or relay socket	replace relay or socket
	Control cable	Loose or damaged wire in control cable	repair splice or tighten connection

Spray Gun



ITEM NO.	PART NUMBER	DESCRIPTION	QTY.
1	300-1088	TRIGGER, GUN	1
2	300-3480 300-0182	LANCE, 36" LANCE, 24"	1
3	300-0192	SELECTOR, DUAL NOZZLE	1
10	020-0027	WASHER, 1/2X 1 1/16 X .094, FLAT, CZ	1
11	300-0004	SPACER, .53" IDX 1" ODX .5, NYLON, BLK	1

NOZZLES, HIGH PRESSURE

ITEM NO.	PART NUMBER	DESCRIPTION
4	300-3360 300-3375 300-3365 300-0254	25040-(2.2GPM PUMP) 25070-(2.9GPM PUMP) 25050-(3.6GPM PUMP) 25075-(4.0GPM PUMP)

NOZZLES, LOW PRESSURE

ITEM NO.	PART NUMBER	DESCRIPTION
5	300-3410	2530 - ALL MODELS

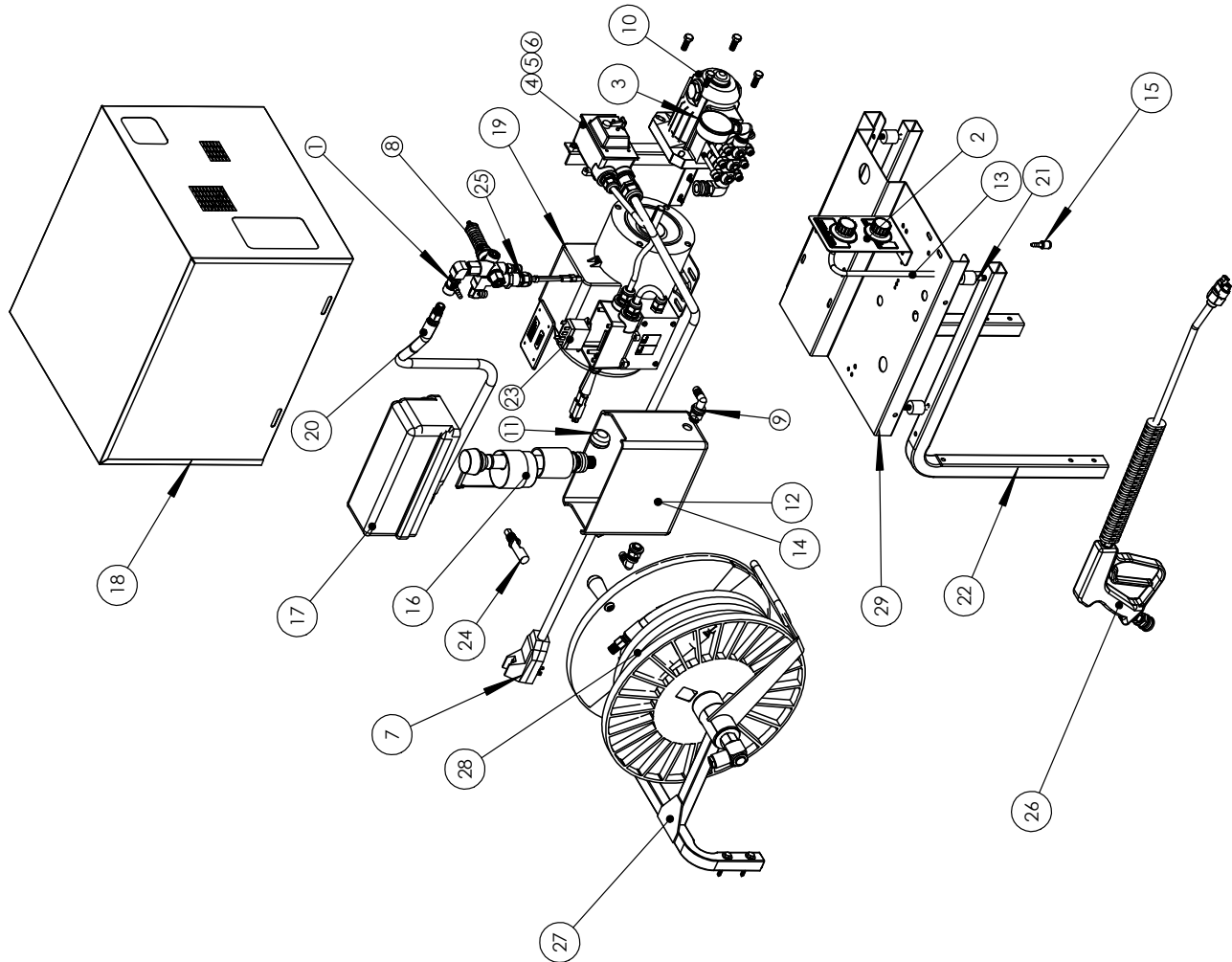
VARI-NOZZLES, HIGH/LOW PRESSURE

ITEM NO.	PART NUMBER	DESCRIPTION
6	300-3440 300-3435 300-3427 300-2863 300-2929 300-3399	4.0 (2.2 GPM- 1100 PSI) 4.5 (2.2 GPM- 1100 PSI) 7.0 (2.9 GPM- 850 PSI) 8.0 (2.9 GPM- 850 PSI) 5.0 TORNADO (3.6GPM-2000PSI) 5.5 H.P. ONLY (3.6 GPM-2000 PSI)

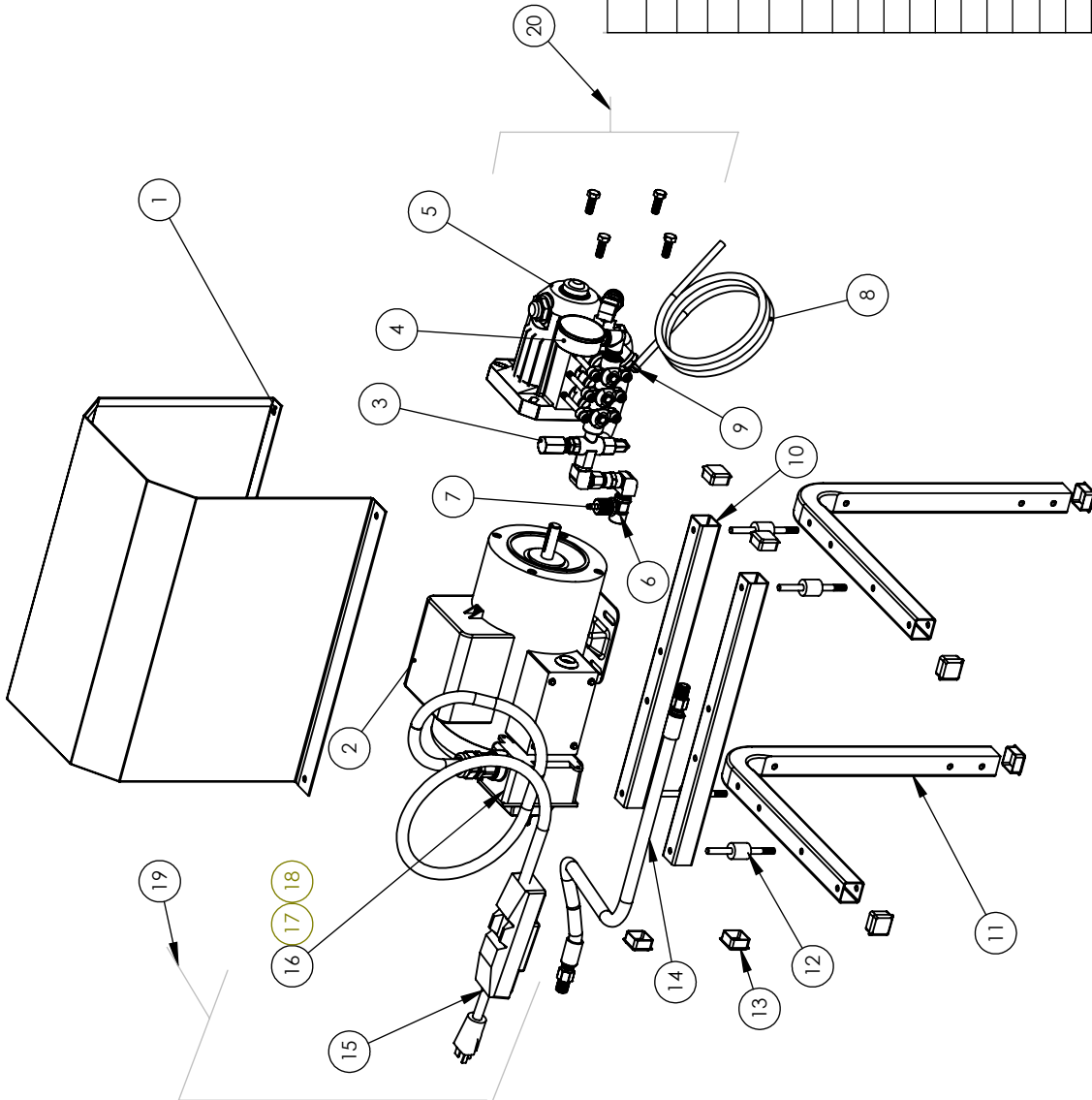
ITEM NO.	PART NUMBER	DESCRIPTION
7	000-0041	Q.C. SOCKET- SHUTOFF
8	300-1120	NIPPLE, HEX, 3/8" FOR USE WITH 000-0041
9	000-0242	Q.C. SOCKET, FLOW THRU

Model SMT 600W

ITEM NO.	PART NUMBER	DESCRIPTION	QTY.
1	300-3610	INJECTOR, CHEMICAL, 1.8	1
	300-0160	INJECTOR, CHEMICAL, 2.1	1
2	300-2548	ASSY, DUAL CHEMICAL SELECTOR	1
3	300-0166	GAUGE, PRESSURE, 0-2000 PSI	1
4	300-5110	"L" BRACKET ASSEMBLY	1
5	300-2213	SWITCH, TOGGLE	1
6	300-2749	COVER, SWITCH, BOX	1
7	300-0417	POWER CORD, 6', 115V - SJ INSULATION	1
	300-0418	POWER CORD, 6', 240V - SJ INSULATION	1
	300-1902	POWER CORD, 6', 120V - SJ INSULATION (SERVICE)	1
	300-1903	POWER CORD, 6', 240V - SJ INSULATION (SERVICE)	1
	300-0157	UNLOADER, BASIC WHITE SPRING	1
8	300-2126	UNLOADER ASSEMBLIES: WITH TEE AND 1.8 MM INJECTOR 2.2 GPM PUMP	1
	300-2127	WITH TEE AND 2.1 MM INJECTOR 2.9 GPM PUMP	1
	300-2128	WITH 1.8MM INJECTOR 2.2 GPM PUMP	1
	300-0244	WITH 2.1MM INJECTOR 2.9 GPM PUMP	1
9	300-1270	ADAPTER, ELBOW, 1/2" HOSE	2
	300-0147	PUMP, 2.9 GPM	1
	300-3037	PUMP, 2.2 GPM	1
	300-2558	PUMP WITH FITTINGS: 2.9 GPM	1
	300-2560	PUMP WITH FITTINGS: 2.2 GPM	1
11	300-3620	FILTER, BULB SCREEN	1
12	300-0403	FLOAT TANK ASSEMBLY W/FLOAT SWITCH	1
	300-0355	FLOAT TANK ASSEMBLY W/O FLOAT SWITCH	1
13	300-3120	TUBING, 1/4" CLEAR	12'
14	300-2682	FLOAT TANK BOTTOM	1
15	300-2947	STRAINER, CHEMICAL PICK UP	3
16	300-2557	VALVE, FLOAT, WATER LEVEL	1
17	300-2683	COVER, FLOAT, TANK	1
18	300-2760	COVER, SS, 600W	1
19	300-3911	MOTOR, 2HP, 1725 RPM	1
	300-3769	MOTOR, PREWIRED, 115V	1
	300-3766	MOTOR, PREWIRED, 208, 230V	1
20	300-0282	HOSE, HIGH PRESSURE, 3'	1
21	300-1204	SHOCKMOUNT	2
22	300-1130	WALLMOUNT BRACKET	1
23	300-0380/300-0381	RELAY, 120V/RELAY 240V	1
24	300-1538	LIQUID LEVEL SWITCH	1
25	300-2947	THERMAL LIMIT SWITCH	1
26	300-1017	SPRAY GUN, FOR 2.2	1
	300-1106	SPRAY GUN, FOR 2.9	1
27	300-1039	HOSE REEL	1
28	300-3180	HOSE	2
29	300-2756	FRAME PLATE	1



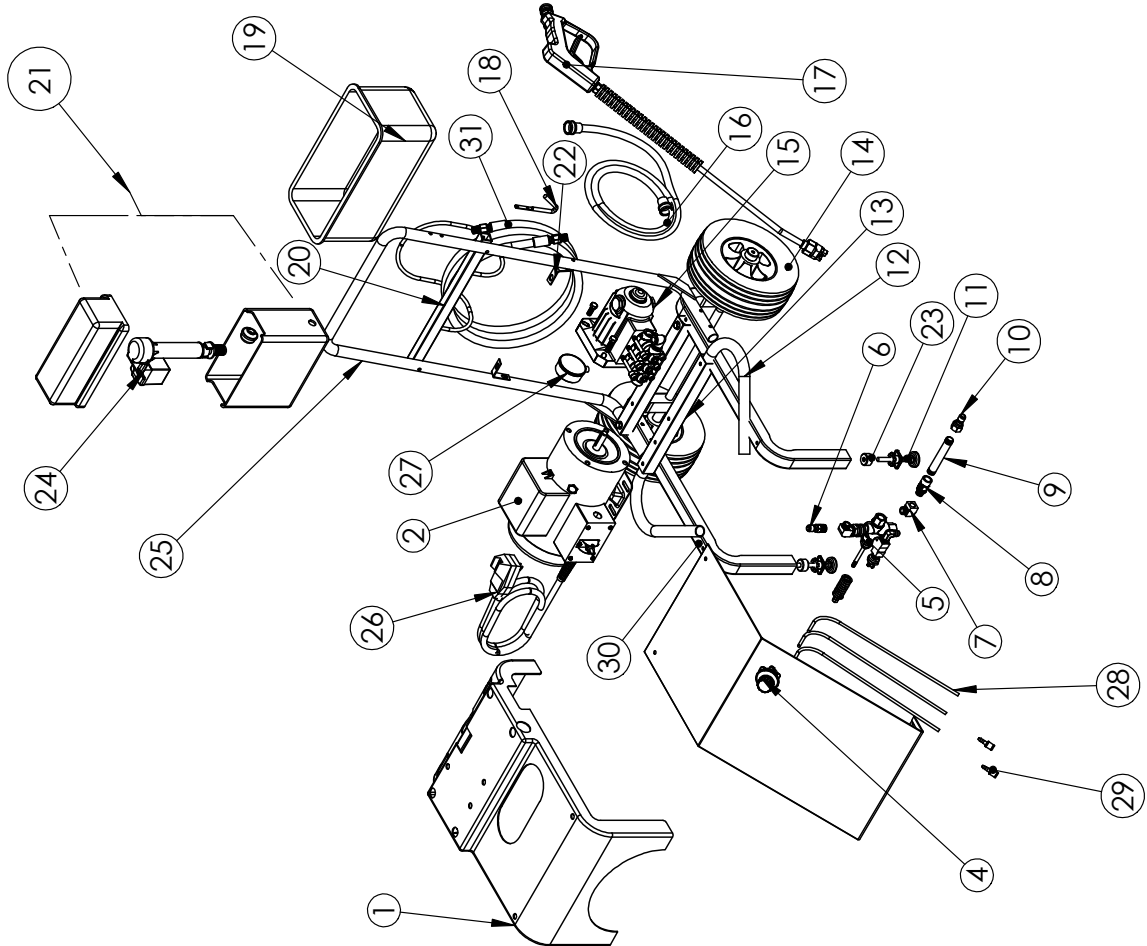
Model 1100W



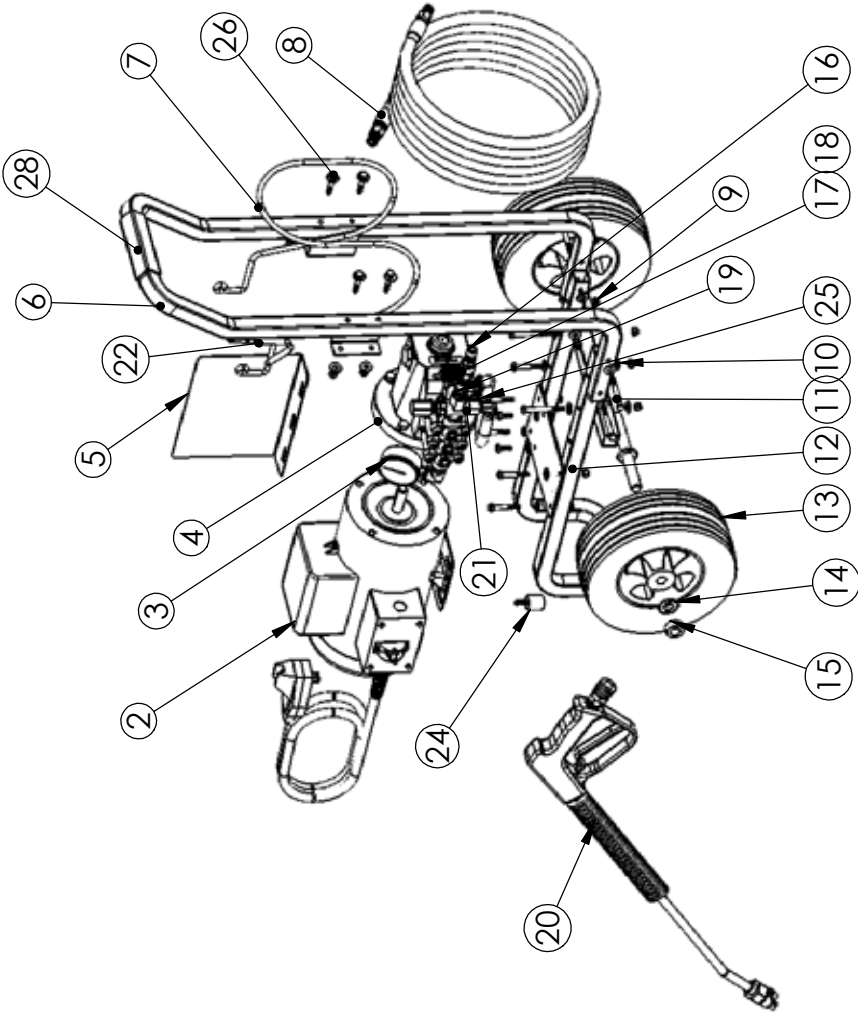
ITEM NO.	PART NUMBER	DESCRIPTION	Default/ QTY.
1	300-2667	COVER, SS	1
2	300-3911	MOTOR, ELECTRIC, 2HP	1
3	300-1104	UNLOADER,	1
4	300-0166	GAUGE, 0-2000	1
5	300-3040	PUMP, PLUNGER, 2.2G, W/UNLOADER	1
6	300-3610	INJECTOR, CHEMICAL, 1.8	1
7	300-0109	VALVE, CHEMICAL METERING	1
8	300-3120	TUBING, CLEAR, 1/4"	6'
9	300-0113	VALVE, THERMAL	1
10	300-1651	TUBE, MOTOR MOUNT	2
11	300-2668	WALL MOUNT BRACKET	1
12	300-1155	SHOCK MOUNT, RUBBER	4
13	300-0099	CAP, 1 1/4 SQUARE	8
14	300-3250	HOSE, HI-PRESSURE, BLUE, 4'	1
15	300-0417	CORD, 6' 115V 20 AMP	1
16	300-2808	SWITCH BOX	1
17	300-2749	COVER, SWITCH TOGGLE	1
18	300-2213	SWITCH, TOGGLE	1
19	300-0036	MOTOR-ASSEMBLY-2HP, PREWIRED, 115V, DRIVE END WIRING	1
20	300-2564	PUMP, 1100W, 2.2G, SVC W/OIL, GAUGE & FITTINGS	

Model SMT 600PE

ITEM NO.	PART NUMBER	DESCRIPTION	QTY.
1	300-2525	POLYETHYLENE COVER	1
2	300-1715	MOTOR, 2HP 115V	1
3	300-0233	VALVE, CHEMICAL SELECTOR	1
4	300-2116	VALVE, UNLOADER	1
5	000-3485	QUICK DISCONNECT PLUG	1
6	300-1110	ELBOW, 90 DEG. STREET	1
7	300-3610	INJECTOR, CHEMICAL 2.2 GPM	1
8B	300-2947	INJECTOR, CHEMICAL 2.9 GPM	1
9	300-1360	NIPPLE, 4" X 3/8 MPT	1
10	000-0241	QUICK DISCONNECT PLUG	1
11	300-2735	FOOT GLIDE	2
12	300-0253	BUMPER GUARD, 600PE	2
13	300-1751	BAR, MOTOR MOUNT	2
14	300-0259	WHEEL, 10.5 DIA. 5/8 BORE	2
15	300-0149	PUMP, 600PE, 2.2	1
16	300-3810	HOSE, WATER SUPPLY	1
17	300-1106	SPRAY GUN, 36", DUAL NOZZLE	1
18	300-0131	GUN HANGER	1
19	300-0501	TRAY, CHEMICAL	1
20	300-2763	HANGER, HOSE, 600PE	1
21	300-0355	TANK, ASSEMBLY 600PE	1
22	000-1342	UNIVERSAL BRACKET	2
23	300-1687	INSERT, THREADED, ROUND 1.08" OD X 5/8"	2
24	300-2557	VALVE, FLOAT	1
25	300-0124	600PE HANDLE	1
26	300-0402	ELECTRIC SUPPLY CORD, 120V, GFCI	1
27	300-0166	GAUGE, PRESSURE, 0-2000 PSI	1
28	300-3120	1/4" TUBING, CLEAR 12'	12'
29	300-2901	FILTER, CHEMICAL, BRASS	1
30	300-1760	FRAME, CHASSIS, 600PE	1
31	300-0106	HOSE, HI-PRES, 3/8" X 30', BLU 3/8" MPT SWIVEL FITTING	1



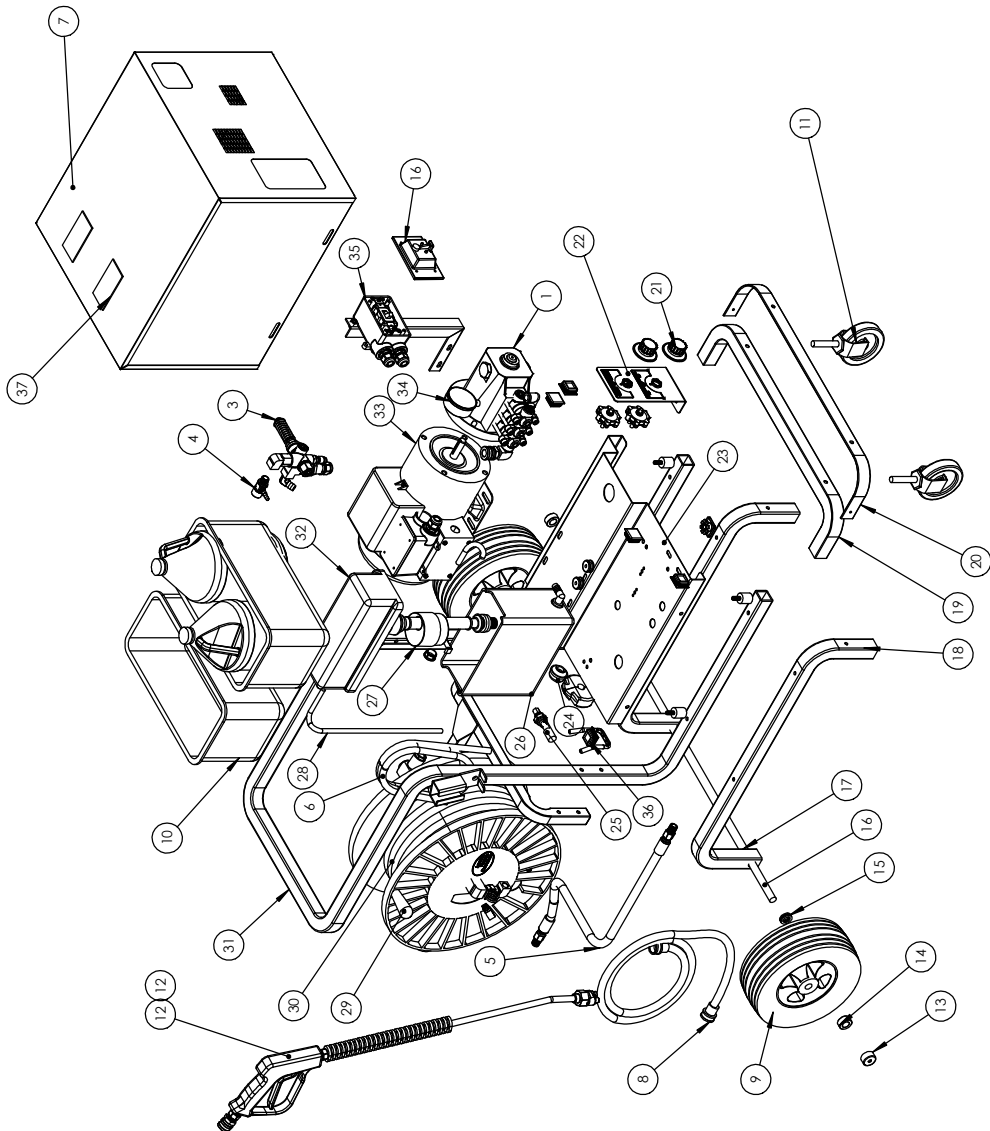
Model SMT 1100PE



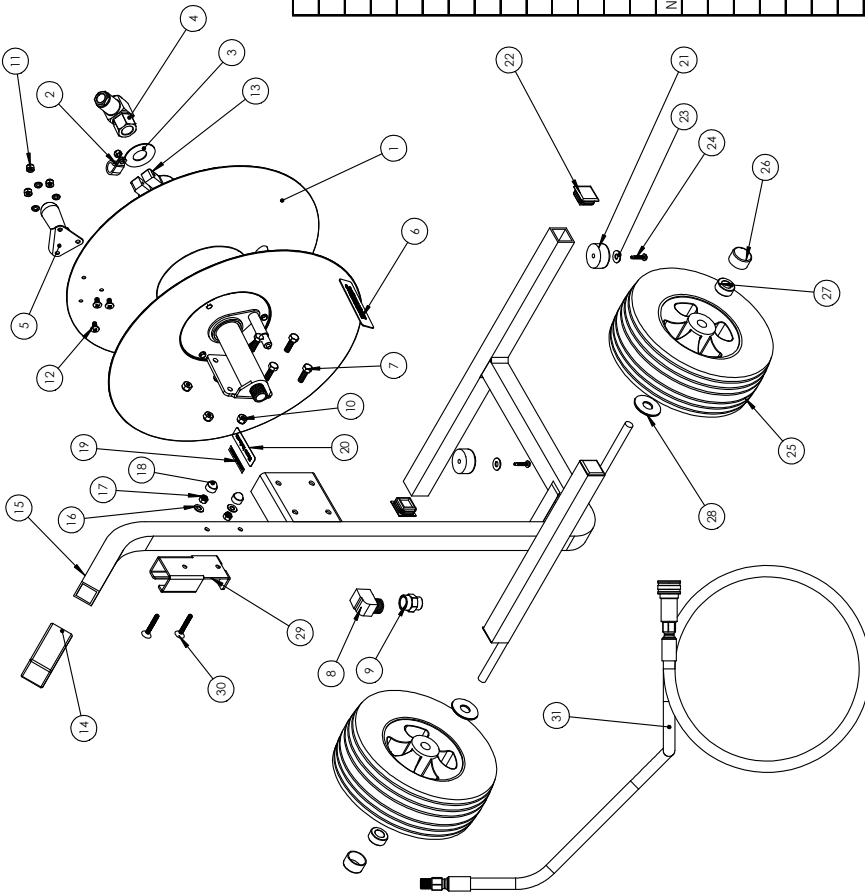
ITEM	PART#	DESCRIPTION	QTY.
1	300-2200	SWITCH TOGGLE	1
2	300-3911	MOTOR, 2 HP, ELECTRIC	1
3	300-1715	MOTOR, 2 HP, W/ 35' GFCI CORD AND ON/OFF SWITCH	
	300-0166	PRESSURE, GAUGE, 0-2000 PSI	1
4	300-0147	PUMP, 2.9 GPM@850	1
	300-3030	PUMP, 2.2GPM@1200	
	300-2569	PUMP, 1100PE, 2.9G.SVC W/OIL, GAUGE & FITTINGS	
	300-2568	PUMP, 1100PE, 2.2G.SVC W/OIL, GAUGE & FITTINGS	
5	300-0050	PANEL, DECAL, DISPLAY	1
6	300-1593	HANDLE, FORMED TUBE	1
7	300-3794	HANGER, HOSE PORTABLE	1
8	300-0106	HOSE, HIGH PRESSURE 30' X3/8"	1
9	021-0018	NUT, .25-20, HN, NYLOCK, CZ	18
10	020-0028	WASHER, 1/4X 3/4 X .075, FLAT, CZ	26
11	025-0023	BOLT, .25-20 X 2 1/2" CZ	6
12	300-1592	FRAME, BASE STRUCTURE	1
13	300-1387	WHEEL, 10.5 DIA, 5/8 BORE	1
14	020-0069	WASHER, 5/8X1 5/16X.075, FLAT, SS	4
15	000-0014	COLLAR	2
16	000-3485	PLUG, F/T DISCONNECT	1
17	300-3610	INJECTOR, CHEMICAL	1
18	300-0109	KNOB, CHEMICAL ADJUSTMENT	1
19	300-1200	COUPLER, BRASS	1
20	300-1017	GUN & WAND ASSY 4.0/30 NOZZLES	1
21	300-1104	UNLOADER ASSY	1
22	300-0131	HANGER, GUN	1
23	300-0402	CORD, ELECTRICAL SUPPLY, 37'	1
24	300-1156	RUBBER FOOT PAD	1
25	300-0113	THERMO VALVE	1
26	025-0028	BOLT, .25-20X1.5.HH, CZ, 5	6
27	300-1634	AXLE	1
28	300-0228	GRIP, HANDLE	1

Model SMT 600PEW

ITEM NO.	PART NUMBER	DESCRIPTION	QTY.
1	300-2540 300-2558*	PUMP ASSY, 2.2 GPM W/GAUGE PUMP ASSY, 2.9 GPM W/GAUGE	1
2	300-0166	GAUGE, PRESSURE, 0-2000 PSI	1
3	300-2118	UNLOADER ASSY W/THERMAL LIMIT SWITCH	1
4	300-3610 300-0160	INJECTOR, CHEMICAL, 1.8 INJECTOR, CHEM, 2.1	1
5	300-3250	HOSE, HI-PRESSURE, 3/8X 4'	1
6	300-0402	POWERCORD, 37', 115V, 15A, SJ	1
7	300-2760	COVER, SMT 600W ASSEMBLY	1
8	300-3808	HOSE, WATER SUPPLY, 6'	1
9	300-1387	WHEEL	2
10	300-0501	TRAY, CHEMICAL, POLYURE	2
11	300-2775	CASTER, SWIVEL, 4" X 7/8"	2
12	300-1107 300-1106	SPRAYGUN ASSY, (2.2GPM) SPRAYGUN ASSY, (2.9 GPM)	1
13	000-1124	CAP, PROTECTIVE	2
14	000-0014	COLLAR	2
15	020-0067	WASHER, NYLON	6
16	300-0257	AXLE	1
17	280-1054	AXLE PROTECTIVE COVER	1
18	300-2261	CHASSIS, PORTABLE	1
19	300-1658	BUMPER	1
20	300-0053	TRIM, BUMPER	32"
21	300-0233	VALVE, DUAL CHEM SELECTOR	2
22	300-2762	BRACKET, DUAL CHEM SELECTOR	1
23	300-2756	FRAME PLATE, 600 SERIES	1
24	300-3620	FILTER, BULB SCREEN	1
25	300-1538	SWITCH, LIQUID LEVEL	1
26	300-2682	TANK, BOTTOM, 10" FLOAT	1
27	300-2657	VALVE, FLOAT, WATER LEVEL	1
28	300-3120	CLEAR TUBING, 1/4"	16'
29	300-1087	HOSE REEL ASSY, 600FEW	1
30	300-0106	HOSE, HI-PRESSURE, 3/8 X 30'	1
31	300-2262	FRAME, HANDLE, KITCHEN NANNY	1
32	300-2683	FLOAT/TANK COVER	1
33	300-3769	MOTOR, ASSEMBLY	1
34	300-0166	GAUGE	1
35	300-0118	ASSEMBLY, SWITCH BOX	2
36	300-0099	PLUG, SQUARE TUBING, PLASTIC 1.25"DIAM., 10-14 GA., BLACK	6
37	200-1745	VELCRO, 4"X2", MATED & MATCHED	2



SMT 300HDR

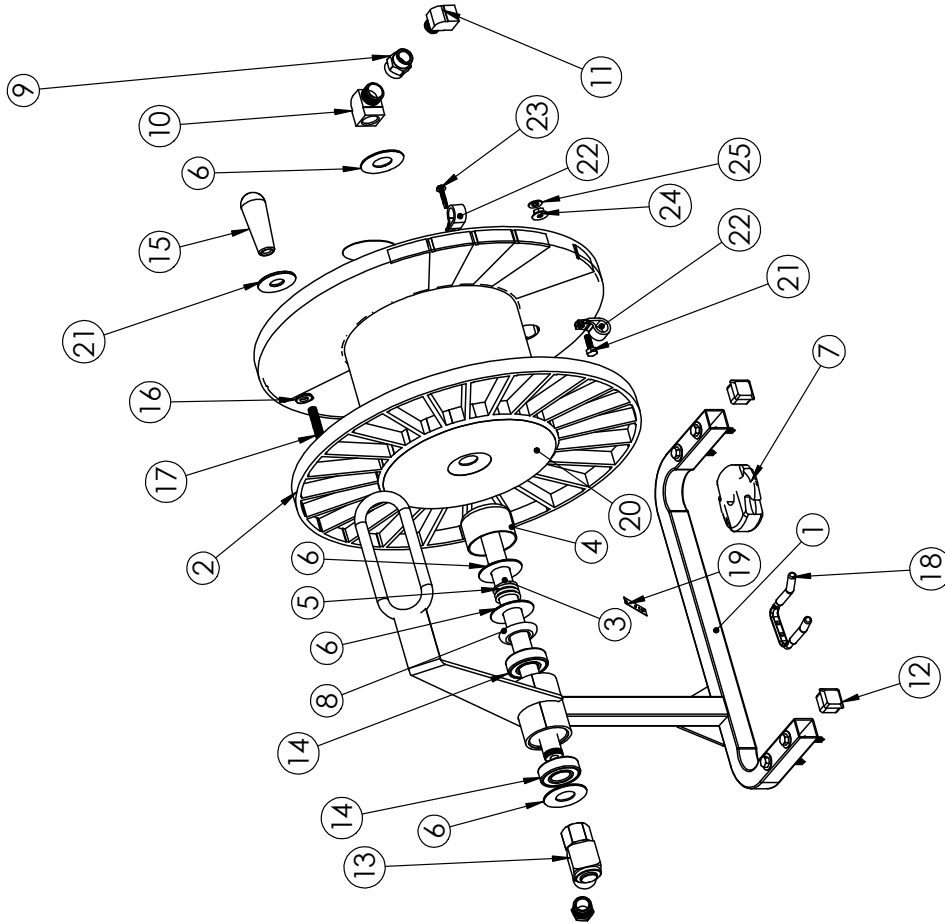


ITEM	PART#	DESCRIPTION	QTY.
1	300-2395	REEL, HEAVY DUTY, BLACK	1
2	000-1312	CLAMP, HOSE, 5/8", W/VINYL COAT	1
3	020-0061	WASHER, FLAT, 2" OD X .88" ID, ZINC	1
4	300-1768	ASSY- SWIVEL, HOSE REEL	1
5	300-0344	HANDLE, HOSE REEL, 4" BLACK PLASTIC	1
6	300-1647	DECAL, "FOR SALES AND SERVICE"	1
7	022-0004	BOLT, HEX, 5/16-18 X 1	4
8	300-1111	ELBOW, STREET, 1/2" MPT X 1/2" FPT	1
9	000-0039	COUPLER, 1/2" X 3/8" FPT, BRASS	1
10	021-0034	NUT, 5/16-18	4
11	021-0018	NUT, .25-20, HN X .5 PHTS	3
12	022-0037	BOLT, .25-20 X .5 PHTS	3
13	300-0604	BRAKE, REEL, ADJUSTABLE FOR HEAVY DUTY HOSE REEL	1
NOT SHOWN	300-1845	DECAL, "SMT HD REEL"	1
14	300-0100	GRIP, HANDLE, HOSE REEL	1
15	300-2394	FRAME, HOSE REEL, HS, SQUARE	1
16	020-0085	WASHER, 1/4 X 9/16 X .04, FLAT, SS	1
17	021-0018	NUT, .25-20 HN NYLON LOCK	1
18	300-1911	CAP, PLASTIC PROTECTOR BLACK	1
19	000-1182	DECAL "PROTECT FROM FREEZING"	1
20	300-4063	DECAL "STORE INDOORS"	1
21	300-0091	BUMPER/FOOT RUBBER, HOSE REEL	2
22	300-0099	PLUG, SQUARE TUBING, PLASTIC	2
23	020-0028	WASHER, 1/4 X 3/4 X .075 FLAT, CZ	2
24	023-0077	#10 X 1" TEK SCREW	2
25	300-1387	WHEEL, 10.5" DIAM., 5/8" HUB	2
26	000-1123	CAP, ROUND, LPE-BLK 1 1/8	2
27	000-0014	COLLAR, 5/8", #2 X 5.69	2
28	020-0050	WASHER, 3/8 X 1 1/2 X .1, FLAT CZ	2
29	300-0175	HANGER, SPRAYGUN	1
30	022-0020	BOLT, .25-20 X 1.74=5	2
31	300-0147	HOSE, 12', UMBILICAL	1

MODEL-SMT HEAVY DUTY HOSE REEL 200' REEL

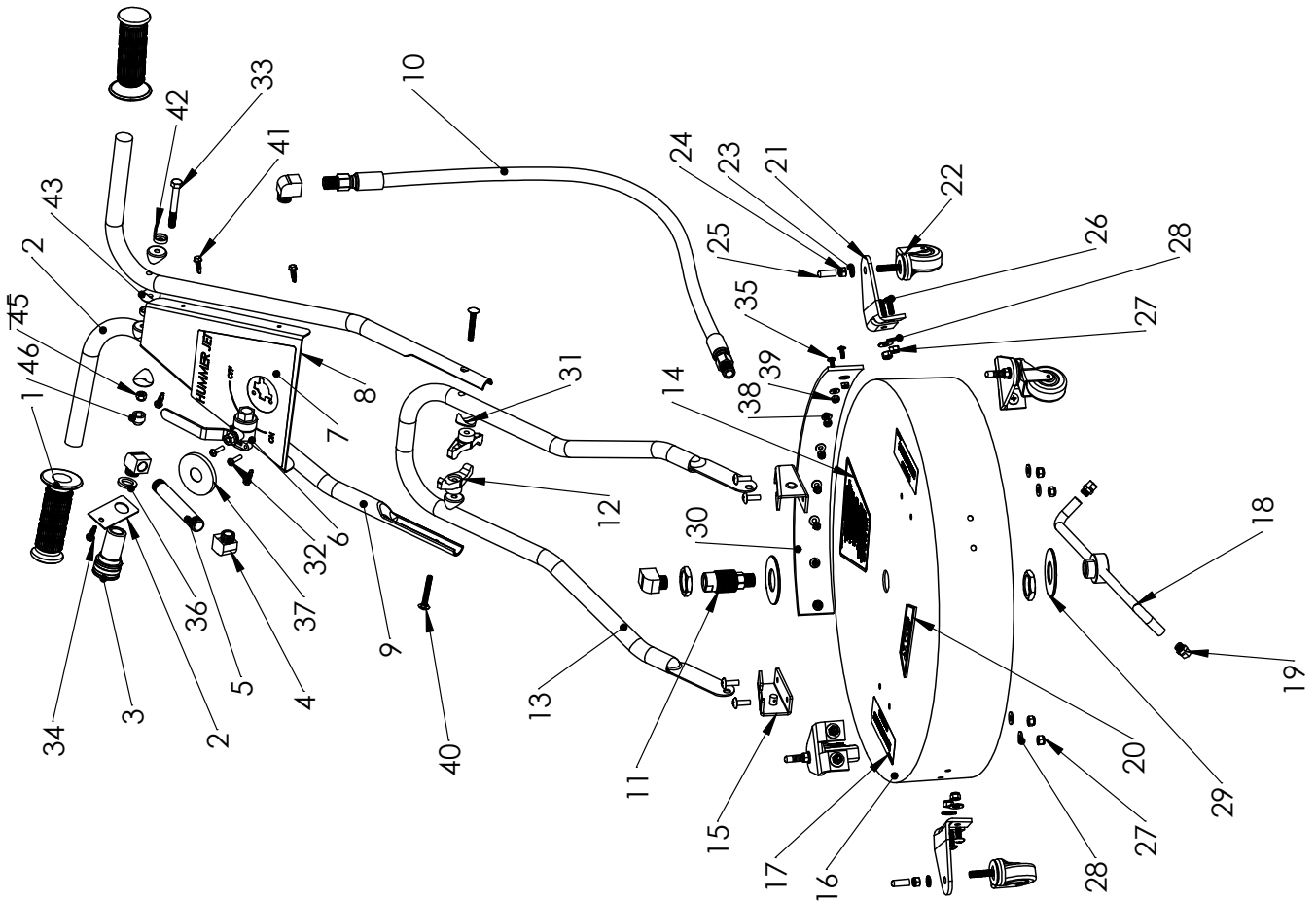
SMT 200RW

ITEM	PART#	DESCRIPTION	QTY.
1	300-0292	FRAME, HOSE REEL,	1
2	300-0298	HOSE REEL, ASSY, W/DECALS & HDW	1
3	300-0014	NIPPLE, 1/2" X 1/2", BRASS	1
4	300-1922	CAP, 2", VINYL	1
5	300-0012	SPRING, 1" X 1"	1
6	020-0061	WASHER, 7/8X2X.0625, FLAT, CZ	4
7	300-0031	STOP, BALL, HOSE, RUBBER, BLACK	1
8	200-1311	BUSHING, 1" ID X 1 1/2 OD X 3/16 RUBBER, BLACK	1
9	000-0039	COUPLER, 1/2" FPT X 3/8 FPT	1
10	300-1111	ELBOW, STREET, 1/2 MPTX 1/2 FPT	1
11	300-1110	ELBOW, STREET, 3/8" MX F 90°	1
12	000-0004	CAP, BLACK, 1"	2
13	300-1768	ASSY, SWIVEL HOSE REEL	1
14	000-0038	BEARING, 7/8ID SEALED FOR HOSE REELS	2
15	300-2744	HANDLE, TAPERED, 3" PLASTIC BLACK	1
16	020-0019	WASHER, 5/16" X 7/8 X .0781 FLAT CZ	1
17	022-0028	BOLT, .375-16X 1.75 PHPS, SS	1
18	300-0132	HANGER, GUN, DOUBLE HOOK, W/MOUNT HOLES	1
19	000-1182	DECAL, "PROTECT FROM FREEZING"	1
20	300-1387	DECAL "SMT HOSE REEL"	1
21	020-0050	WASHER, 3/8X1 1/2X.1, FLAT, CZ	1
22	000-0132	CLAMP	2
23	023-0132	SCREW, #12X.75, HHFS, TEK, CZ	1
24	020-0085	WASHER, 1/4X9/16X.04, FLAT, SS	1
25	021-0039	NUT, 8-32, HN, NYLON LOCK, SS	1
N/A	300-1080	SUPPLY- TAPE, SELF ADHESIVE HIGH DENSITY	0.5
N/A	300-4280	BOX SHIPPING, HOSE REEL	2
N/A	300-4281	INSERT, SHIPPING, HOSE REEL	2

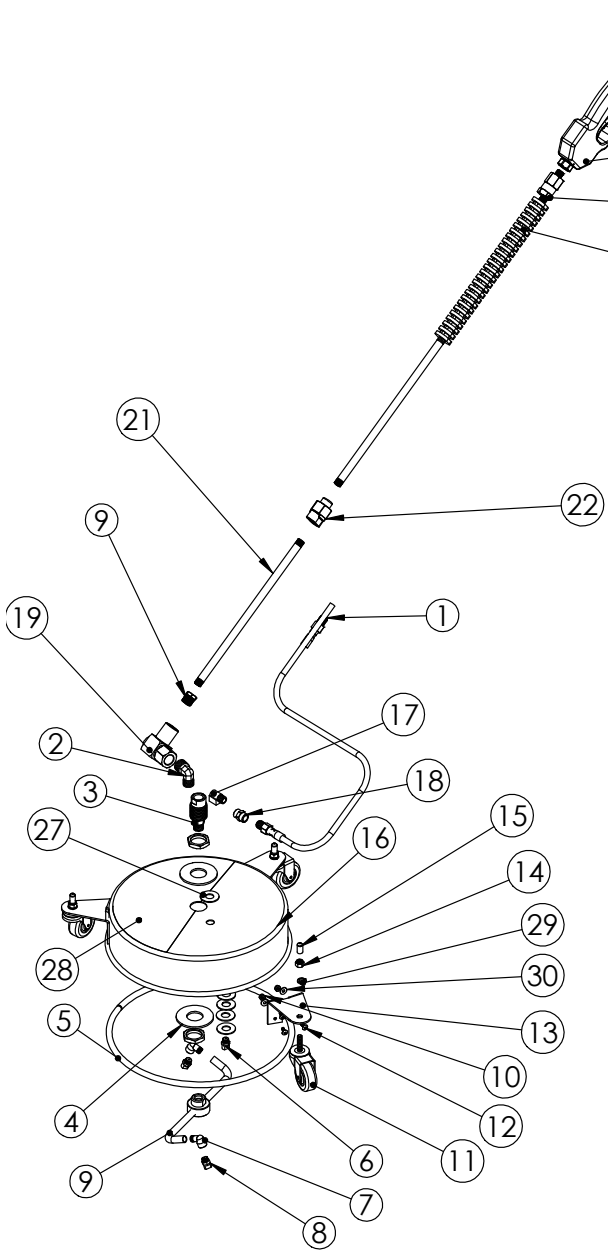


Hummer Jet Sr.

ITEM	PART#	DESCRIPTION	QTY.
1	300-2939	GRIP, 7/8" X 5", WITH FLANGE BLACK	2
2	300-1644	BRACKET, MOUNT, QUICK CONNECT FOR HUMMER JET SR	1
3	000-0041	CONNECT, QUICK-S-O SOCKET 3/8" FPT, BRASS	1
4	300-1110	ELBOW, STREET, 3/8" M X F, 90° BRASS	4
5	300-1360	NIPPLE, 3/8" X 4" BRASS	1
6	300-1400	VALVE, BALL, 3/8" FPT X 3/8" FPT 3/16-24 THREAD MOUNT HO	1
7	300-4116	DECAL, HUMMER JET, VALVE PLATE	1
8	300-3851	PLATE, VALVE MOUNT FOR HUMMER JET SR	1
9	300-4120	HANDLE, UPPER ASSEMBLY HUMMER JET SR., FORMED TUBE	2
10	300-0283	HOSE, HI-PRES, 3/8" X 28", BLU 3/8" MPT SWIVEL FITTING (X2	1
11	300-4117	SWIVEL, HI-SPEED, HI-PRESSURE BULKHEAD FITTING, 3/8" NP	1
12	300-3909	T-HANDLE ONLY, HUMMER BOLT	1
13	300-4115	HANDLE, LOWER ASSEMBLY HUMMER JET SR., FORMED TUBE	1
14	300-3896	DECAL, WARNING: DO NOT USE...	1
15	300-3899	BRACKET SET, HANDLE MOUNT, SET OF 2 (LEFT & RIGHT)	1
16	300-4130	DECK, HUMMER JET SR, ROUND STAINLESS,	1
17	300-3895	DECAL, WARNING, KEEP HANDS...	2
18	300-4118	WAND, ROTARY, T-BAR 18" HUMMER JET, 86-812	1
19	300-3893	NOZZLE, 1/8 MEG, #15025, SS 15 DEG, #2.5 ORIFICE	2
20	300-4030	DECAL, LOGO, "SMT" RAISED PLASTIC, TRAPEZOID	1
21	300-2818	BRACKET, CASTER, HUMMER JET SR 1/8" SS, 90 DEG.	4
22	300-2772	CASTER, SWIVEL, 3" DIA X 1 1/4" W STEM 3/8-16 X 1"-HUMME	4
23	020-0058	WASHER, 3/8 X 1 1/16 X .094, LOCK, SS	4
24	021-0049	NUT, 3/75-18, HN, SS	4
25	300-1940	CAP BLK, 313 X .5 VINYL ROUND END	4
26	022-0005	BOLT, .25-20 X .75, PHTS, SS	16
27	021-0038	NUT, .25-20, HN, NYLON LOCK, SS	12
28	020-0085	WASHER, 1/4 X 9/16 X .04, FLAT, SS	12
29	020-0053	WASHER, 1/8 X 2 1/2 X .1, FLAT, SS	2
30	300-3711	SKIRT, SPLASH,	1
31	300-3927	SPACER, COVERED 5/16"	4
32	023-0137	SCREW, 10-24 X .375, BHCS, CZ	2
33	025-0014	BOLT, .25-20 X 3, HH, CZ, 5	1
34	023-0132	SCREW, #12 X .75, HHFS, TEK, CZ	1
35	022-0023	SCREW, 8-32 X .5, PHTS, SS	9
36	020-0082	WASHER, 7/5 X 1 X .125, RUBBER	1
37	300-1922	CAP, 2", VINYL, BLACK	1
38	020-0059	WASHER, #10 X 7/16 X .061, FLAT, SS	9
39	021-0039	NUT, 8-32, HN, NYLON LOCK, SS	9
40	023-0170	BOLT, .3125-18 X 2.25, SADDLE BOLT CZ	2
41	023-0105	SCREW, #8 X .5, HHFS, TEK, CZ	4
42	029-0007	SCREW COVER, HINGED	2
43	000-0025	SPACER, ROUND TO FLAT, PLASTIC	4
44	300-3276	BOX, SHIPPING, HUMMER JET SR, 28" X 24" X 14"	1
45	021-0038	NUT, .25-20, HN, NYLON LOCK, SS	1
46	300-1911	COVER, PROTECTOR, NUT	1



Hummer Jet Jr.



ITEM NO.	PART NUMBER	DESCRIPTION	QTY.
1	300-3856	1/4 x 22" SWIVEL HOSE	1
2	300-1992	ELBOW, 1/2" X 3/8"	1
3	300-4117	SWIVEL, TURBO ROTOR	1
4	020-0053	WASHER, FLAT, 1 1/8 STAINLESS STEEL	2
5	300-3945	TRIM, HUMMER JET	1
6	300-3410	NOZZLE, 1/4 25° # 30	1
7	300-3913	ELBOW, 90°, 1/8 MPT X 1/8 FPT	2
8	300-3908	NOZZLE, #4 X 15°	2
9	300-3912	WAND, ROTARY	1
10	021-0039	NUT, NYLOC, 8-32	12
11	200-1052	CASTER	3
12	022-0023	SCR, 8-32 STAINLESS STEEL	12
13	300-1185	BRACKET CASTER MOUNT	3
14	022-0023	NUT, NYLOC, 5/16-18	3
15	300-0415	THREAD PROTECTORS	3
16	300-3854	DECK, HUMMER JET	1
17	300-1102	ELBOW, STREET, 1/4 MPT	1
18	300-1240	COUPLING, 1/4, BRASS	1
19	300-1688	SWIVEL, 90° ROTATING	1
20	300-1160	BUSHING, HEX, 3/8 X 1/4	1
21	300-3858	LANCE, 12" UNINSULATED	1
22	300-0192	DUAL NOZZLE	1
23	300-2747	WAND, 24" S.S. STRAIGHT	1
24	300-3700	SPRAY GUN, IN-LINE	1
25	300-3855	SWIVEL, IN-LINE, 1/4"	1
26	000-0242	QUICK CONNECT FLOW-THROUGH	1
27	020-0056	WASHER, FLAT, S.S. 9/16" X1 1/4" O.D.	4
28	300-3862	DECAL, OPERATION	1
29	020-0055	WASHER, LOCK	1
30	020-0059	WASHER, #10X7/16X.061,FLAT,SS	12



spraymastertech.com

SPRAY MASTER TECHNOLOGIES®

A product line of Assembled Products Corporation
115 E. Linden Street, Rogers, Arkansas 72756

479-636-5776 • 800-548-3373

