



A-Series Service Manual

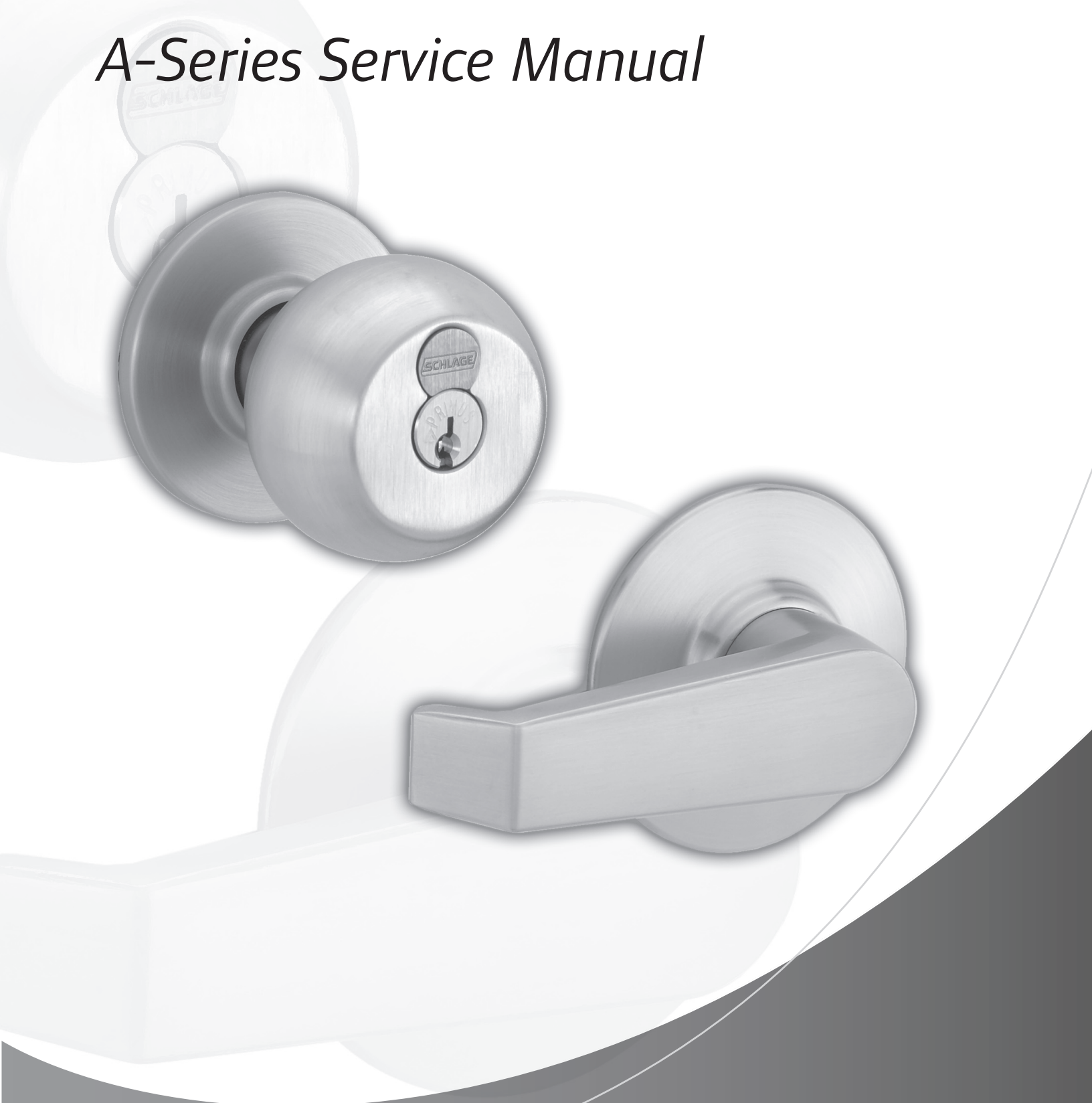


Table of Contents

Introduction	1
Standard Features*	1
Lock Assembly Drawing Index	2
A10S	4
A25D	5
A30D	6
A40S	7
A43D	8
A53PD	9
A70PD	10
A79PD	11
A80PD	12
A85PD	13
A170	14
Knob and Lever Designs	15
Latches	16
Strikes	17
Optional Torx Screw Packs	17
Torx Tools	17
Cylinders	18
Cylinder Units and Parts	18
Cylinder Units	18
Cylinder Parts	19
Standard Cylinder	19
Hotel Function Indicator Cylinder	19
Interchangeable Cores, Designs, and Parts	20
Interchangeable Cores (IC)	20
Interchangeable Core Accessory and Service Parts.....	20
Interchangeable Core	21
Finishes	22
Lubrication	22
Installation Tools and Kits	23
40-147 Kit Contents	23
Long Backsets.....	23
Reinforcement Kit.....	23
Keying	24
Key Array Chart.....	24
40-116 Cylinder Body Loading Tool	24
Pin Tumbler Keys.....	24
Model MA84 Plunger Installation	25
Outside Plunger Assembly	25
Outside Plunger Assembly	26
Inside Plunger Assembly	26
A-Series Installation Instructions	27
Door Handing	30
Ordering Procedure	30

Introduction

This manual contains a complete listing of A-Series (Grade 2) cylindrical lock parts and assemblies manufactured by the Schlage Lock Company. This manual lists components of A-Series locks manufactured after 1984.

Exploded views of each lock chassis and trim assemblies are provided with an accompanying chart to identify parts for replacement purposes. In addition, this manual provides lock trim ordering procedures, general cylinder information, and all auxiliary components of the A-Series cylindrical locks.

Standard Features*

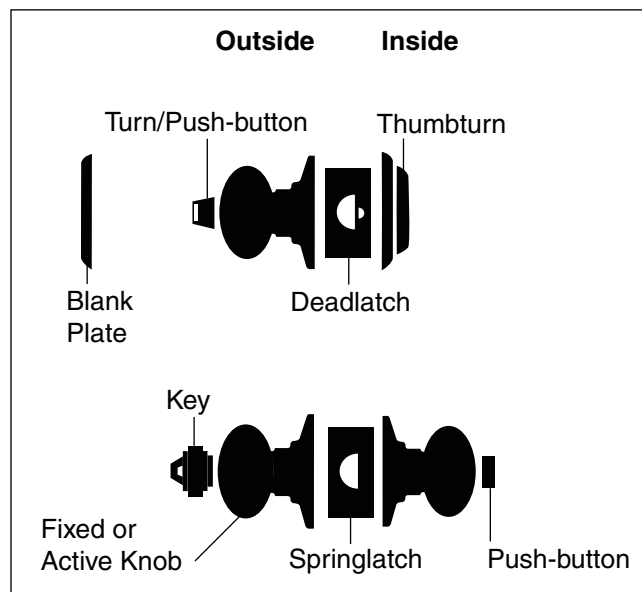
Certifications	ANSI A156.2, 2003, Series 4000, Grade 2, UL Listed for 3-hour fire door.
Latchbolt	1/2" throw, brass, chrome plated, deadlocking on keyed and exterior functions.
Strike	T-Strike 1 1/8" x 2 3/4", Square corner, box.
Backset	2 3/8" standard
Cylinder	6-Pin solid brass, keyed 6-pin, C123 keyway, keyed different (KD)**
Door Range	1 3/8" - 1 7/8"
Keys	Two nickel silver cut keys per lock, 6-pin, C123 section**

* Locks are furnished with standard features unless otherwise specified.










** Items specified in C keyway will be furnished with cylinder keyed 5-pin and with 5-pin keys unless otherwise specified.



Lock Assembly Drawing Index

The Lock Assembly Drawing Index provides visual representations and textual descriptions of available functions. Page numbers for full trim and chassis drawings are referenced.



Lock Assembly Drawing Index

FUNCTION		ANSI/BHMA A156.2, 2003, SERIES 4000, GRADE 2			CHASSIS AND TRIM
SCHLAGE	ANSI	DESCRIPTION	OUTSIDE FUNCTION	INSIDE FUNCTION	Page
A10S	F75	Passage Latch	Both knobs always unlocked.		4
A25D		Exit Lock	Blank plate outside.	 Inside knob always unlocked. Specify door thickness, 1 $\frac{3}{8}$ " or 1 $\frac{3}{4}$ ".	5
A30D	F77	Patio Lock		 Push-button locking. Turning inside knob or closing door releases button, preventing lock-out.	6
A40S	F76	Bath/Bedroom Privacy Lock	Can be opened from outside with small screwdriver (not included) when locked with inside push-button.	 Push-button locking. Turning inside knob or closing door releases button.	7
A43D	F79	Communicating Lock	Turn-button in outside knob locks and unlocks knob and inside thumbturn.	 Inside thumbturn locked and unlocked by outside turn-button. Thumbturn retracts latch when unlocked by outside turn-button.	8
A53PD	F109	Entrance Lock	Turn/push-button: Opened by outside key or unlocked with turn/push-button. Push-button: Opened by outside key or unlocked with push-button, or by turning inside knob.	 Turn/push-button: Pushing and turning button locks/unlocks outside knob. Push-button: Pushing button locks/unlocks outside knob. Turning knob unlocks outside knob.	9
A70PD	F84	Classroom Lock	Outside knob locked and unlocked by key.	 Inside knob is always unlocked.	10
A79PD		Communicating Lock With Blank Plate	Locked or unlocked by key from outside.	 Blank plate inside.	11
A80PD	F86	Storeroom Lock	Outside knob is fixed. Entrance by key only.	 Inside knob is always unlocked.	12

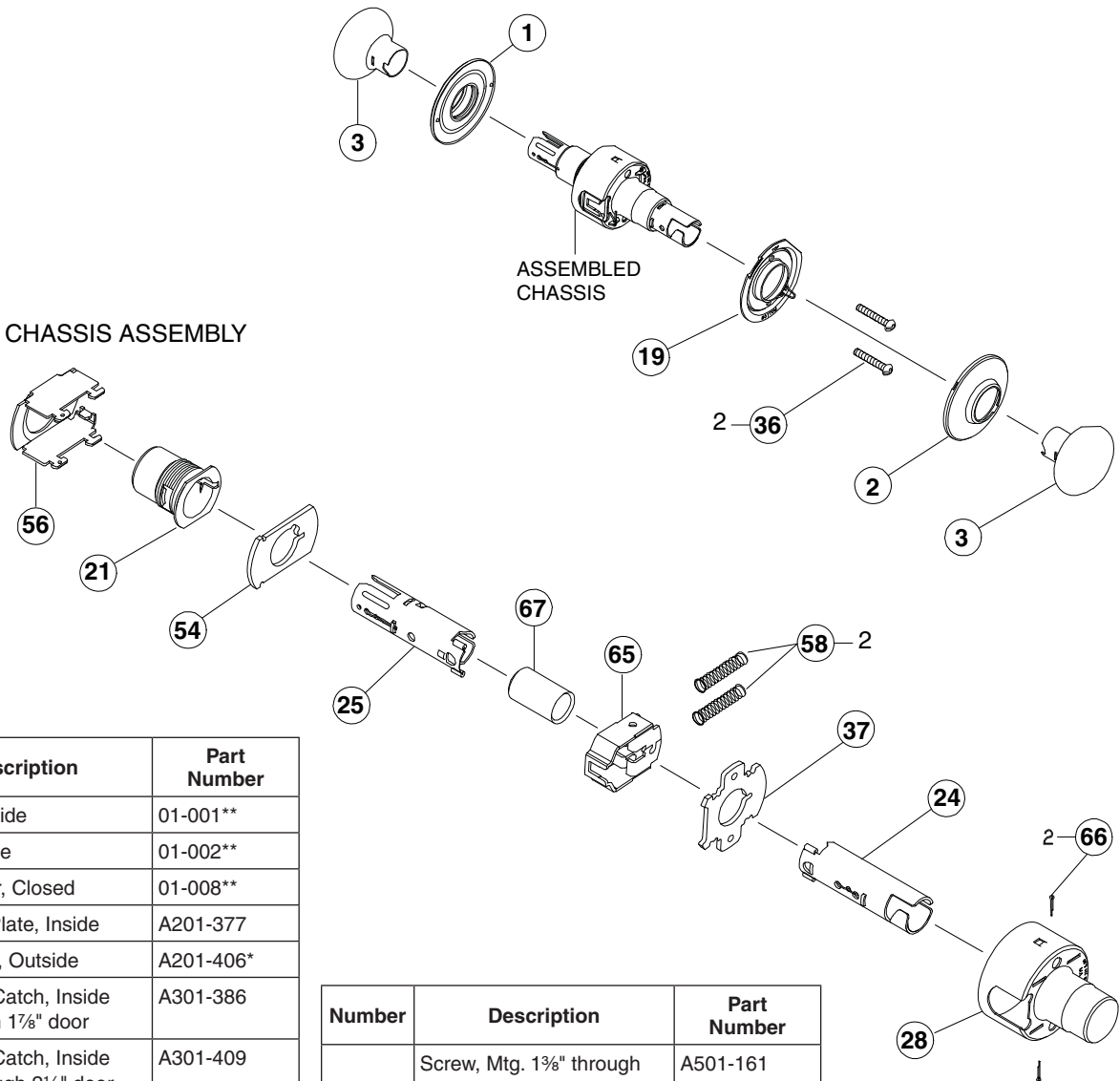
FUNCTION		ANSI/BHMA A156.2, 2003, SERIES 4000, GRADE 2			CHASSIS AND TRIM
SCHLAGE	ANSI	DESCRIPTION	OUTSIDE FUNCTION	INSIDE FUNCTION	Page
A85PD	F93	Faculty/Restroom Lock (with Indicator Cylinder)	Outside knob is fixed. Entrance by key only.	 <p>Inside push-button activates visual occupancy indicator, allowing only emergency master key to operate. Turning inside knob or closing door releases visual occupancy indicator. Rotation of inside spanner-button provides lock-out feature by keeping indicator thrown.</p>	13
A170		Single Dummy	Dummy trim for one side of the door. Used for door pull or as matching inactive trim.		14

A10S

Passage Lock

TRIM ASSEMBLY

CHASSIS ASSEMBLY



Number	Description	Part Number
1	Rose, Outside	01-001**
2	Rose, Inside	01-002**
3	Knob/Lever, Closed	01-008**
19	Mounting Plate, Inside	A201-377
21	Hub & Cap, Outside	A201-406*
24	Spindle & Catch, Inside 1 $\frac{3}{8}$ " through 1 $\frac{7}{8}$ " door	A301-386
	Spindle & Catch, Inside > 1 $\frac{7}{8}$ " through 2 $\frac{1}{4}$ " door	A301-409
	Spindle & Catch, Inside > 2 $\frac{1}{4}$ " through 2 $\frac{1}{2}$ " door	A301-410
25	Spindle & Catch, Outside	A301-387
28	Housing & Cap, 1 $\frac{3}{8}$ " through 1 $\frac{7}{8}$ " door	A301-403*
	Housing & Cap, > 1 $\frac{7}{8}$ " through 2 $\frac{1}{4}$ " door	A301-404*
	Housing & Cap, > 2 $\frac{1}{4}$ " through 2 $\frac{1}{2}$ " door	A301-405*
	Housing Threaded, 1 $\frac{1}{8}$ " through 1 $\frac{7}{8}$ " door	A301-406*

Number	Description	Part Number
36	Screw, Mtg. 1 $\frac{1}{8}$ " through 1 $\frac{7}{8}$ " door	A501-161
	Screw, Mtg. > 2" through 2 $\frac{1}{2}$ " door	A501-818
37	Plate, Inside	A501-305
54	Plate, Outside	A508-399
56	Frame	A508-598
58	Spring, Slide, Knob & Lever	A508-605
65	Slide, Non-restoring	A590-181
66	Cotter Pin	C503-008
67	Plug, Spindle	G570-232

* Specify finish

** Specify design and finish

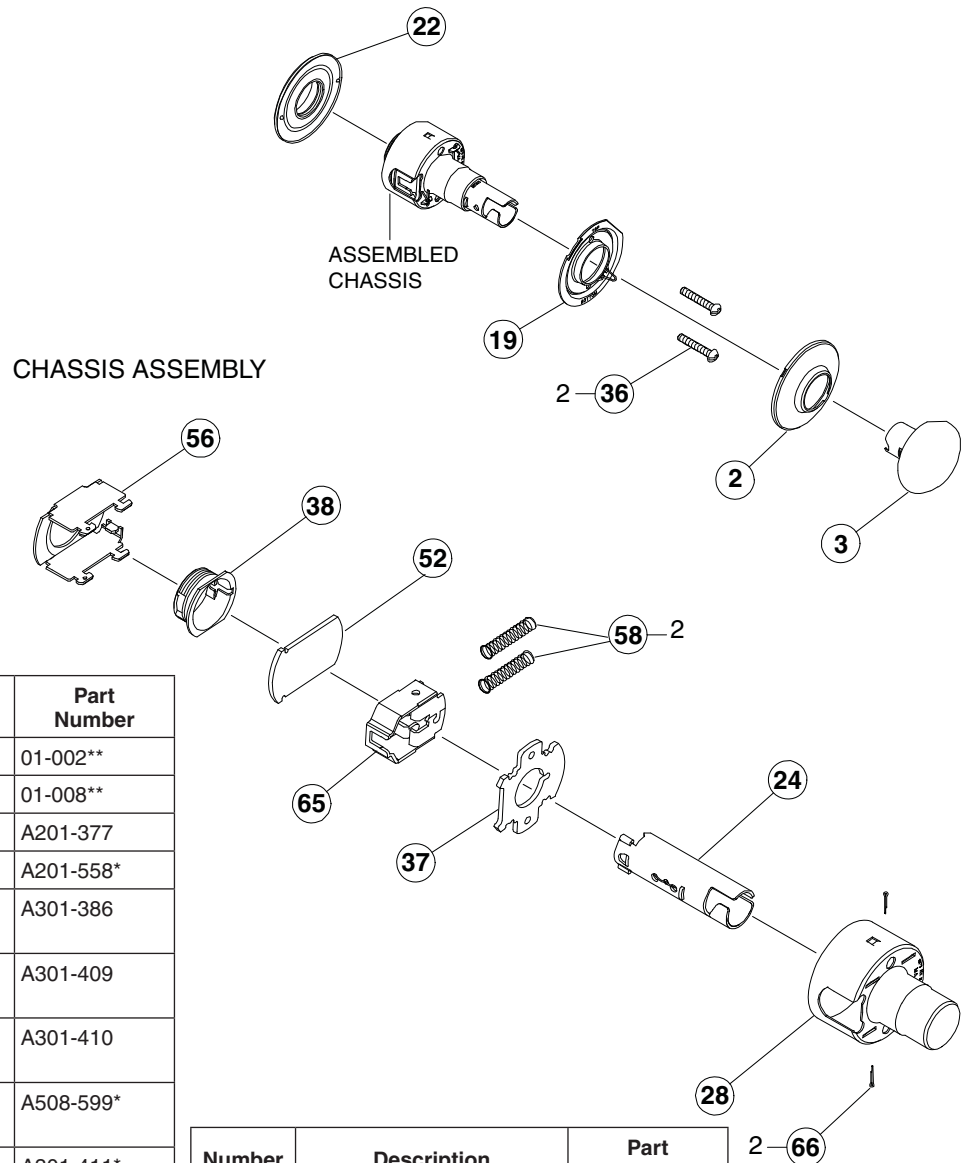
Note: Parts for doors 2 - 2 $\frac{1}{2}$ " thick are for doors extended inside (EI) only.

A25D

Exit Lock

TRIM ASSEMBLY

CHASSIS ASSEMBLY



Number	Description	Part Number
2	Rose, Inside	01-002**
3	Knob/Lever, Closed	01-008**
19	Mounting Plate, Inside	A201-377
22	Rose, Outside	A201-558*
24	Spindle & Catch, Inside 1 ³ / ₈ " through 1 ⁷ / ₈ " door	A301-386
	Spindle & Catch, Inside > 1 ⁷ / ₈ " through 2 ¹ / ₄ " door	A301-409
	Spindle & Catch, Inside > 2 ¹ / ₄ " through 2 ¹ / ₂ " door	A301-410
28	Housing & Cap, 1 ³ / ₈ " through 1 ⁷ / ₈ " door	A508-599*
	Housing & Cap, > 1 ⁷ / ₈ " through 2 ¹ / ₄ " door	A301-411*
	Housing & Cap, > 2 ¹ / ₄ " through 2 ¹ / ₂ " door	A301-412*
	Housing Threaded, 1 ¹ / ₈ " through 1 ⁷ / ₈ " door	A301-406*
36	Screw, Mtg. 1 ³ / ₈ " through 1 ⁷ / ₈ " door	A501-161
	Screw, Mtg. > 2" through 2 ¹ / ₂ " door	A501-818
37	Plate, Inside	A501-305

Number	Description	Part Number
38	Hub, 1 ³ / ₈ " through 1 ¹ / ₂ " door	A501-498
	Hub, > 1 ¹ / ₂ " through 2 ¹ / ₂ " door	A501-499
52	Plate, Outside	A501-874
56	Frame	A508-598
58	Spring, Slide, Knob & Lever	A508-605
65	Slide, Non-restoring	A590-181
66	Cotter Pin	C503-008

* Specify finish

** Specify design and finish

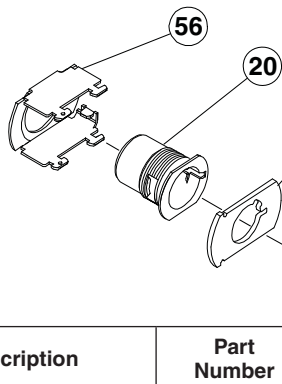
Note: Parts for doors 2 - 2¹/₂" thick are for doors extended inside (EI) only.

A-Series Service Manual

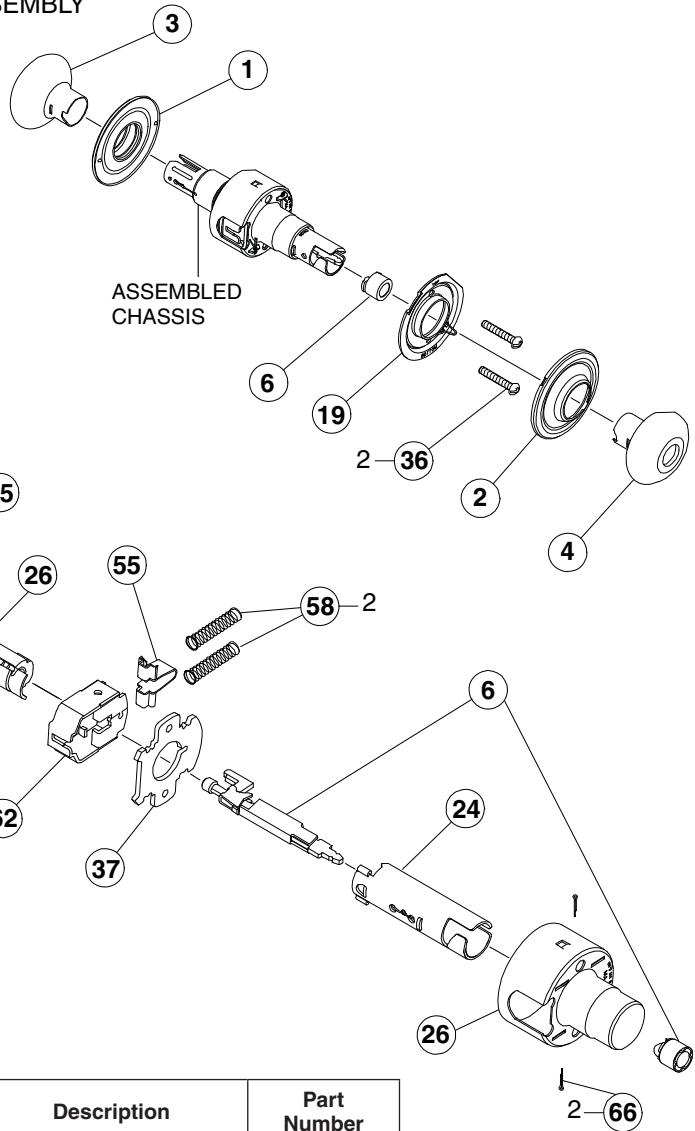
A30D

Patio Lock

CHASSIS ASSEMBLY



TRIM ASSEMBLY



Number	Description	Part Number
1	Rose, Outside	01-001**
2	Rose, Inside	01-002**
3	Knob/Lever, Closed	01-008**
4	Knob/Lever, Open	01-009**
6	Plunger & Button, Inside	01-055***
19	Mounting Plate, Inside	A201-377
20	Hub and Cap, Outside	A201-399*
22	Rose, Outside	A201-558
24	Spindle & Catch, Inside 1 1/8" through 1 7/8" door	A301-386
	Spindle & Catch, Inside > 1 7/8" through 2 1/4" door	A301-409
	Spindle & Catch, Inside > 2 1/4" through 2 1/2" door	A301-410
25	Spindle and Catch, Outside	A301-387
26	Cam	A301-391
28	Housing & Cap, 1 3/8" through 1 7/8" door	A301-403*
	Housing & Cap, > 1 7/8" through 2 1/4" door	A301-404*
	Housing & Cap, > 2 1/4" through 2 1/2" door	A301-405*
	Housing, Threaded, 1 1/8" through 1 7/8" door	A301-406*

Number	Description	Part Number
36	Screw, Mtg. 1 3/8" through 1 7/8" door	A501-161
	Screw, Mtg. > 1 7/8" through 2 1/2" door	A501-818
37	Plate, Inside	A501-305
54	Plate, Outside	A508-399
55	Seat Spring, Knob & Lever	A508-597
56	Frame	A508-598
58	Spring, Slide, Knob & Lever	A508-605
62	Slide, Restoring	A590-158
66	Cotter Pin	C503-008

* Specify finish

** Specify design and finish

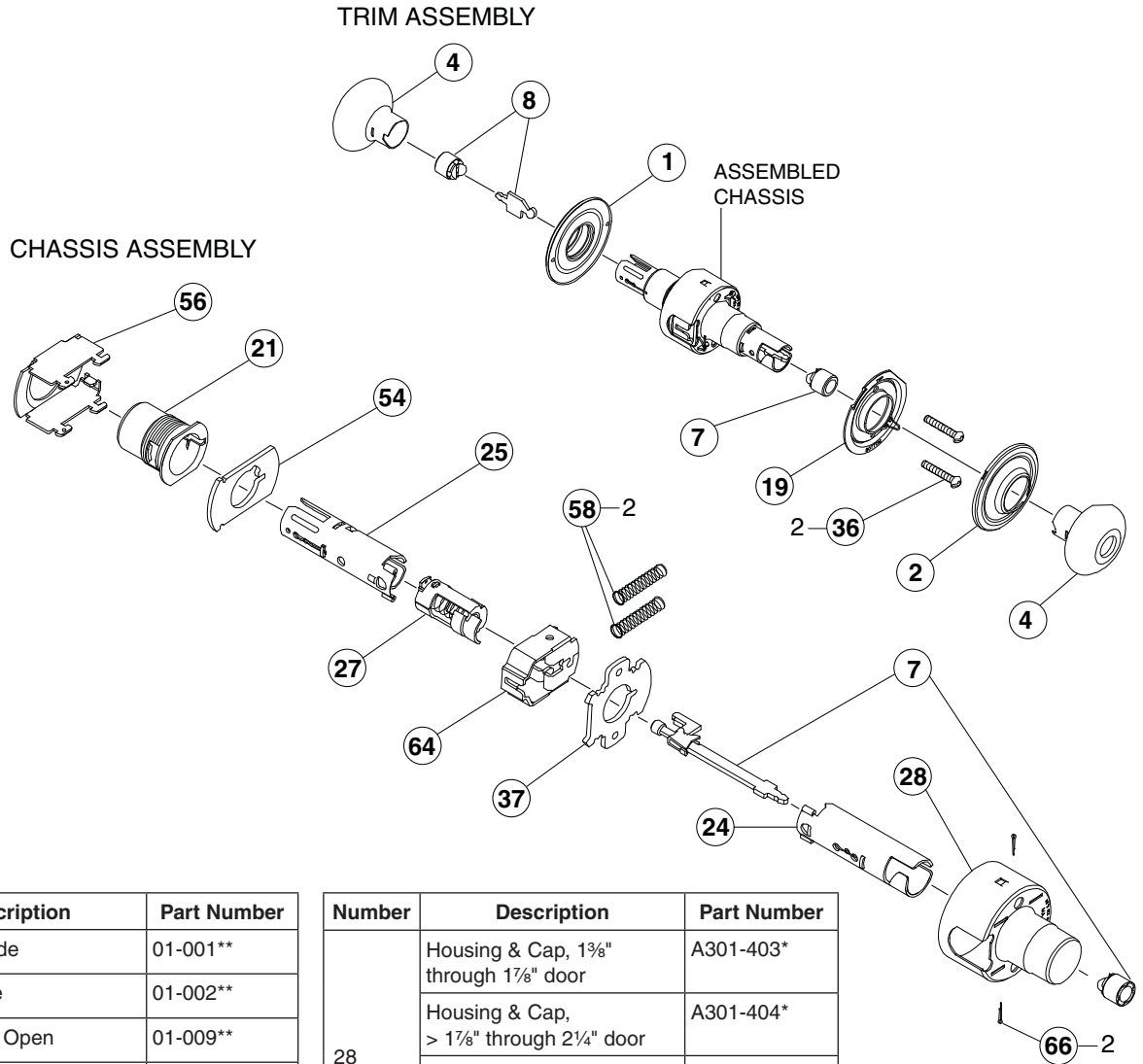
*** Specify dimension, design and finish.

Note: Parts for doors 2 - 2 1/2" thick are for doors extended inside (EI) only.

A40S

Bath/Bedroom

Privacy Lock



Number	Description	Part Number
1	Rose, Outside	01-001**
2	Rose, Inside	01-002**
4	Knob/Lever, Open	01-009**
7	Plunger & Button, Inside	01-056***
8	Plunger & Button, Outside	01-057***
19	Mounting Plate, Inside	A201-377
21	Hub and Cap, Outside	A201-406*
24	Spindle & Catch, Inside 1 1/8" through 1 7/8" door	A301-386
	Spindle & Catch, Inside > 1 7/8" through 2 1/4" door	A301-409
	Spindle & Catch, Inside > 2 1/4" through 2 1/2" door	A301-410
25	Spindle and Catch, Outside	A301-387
27	Cam, Outside	A301-402

Number	Description	Part Number
28	Housing & Cap, 1 1/8" through 1 7/8" door	A301-403*
	Housing & Cap, > 1 7/8" through 2 1/4" door	A301-404*
	Housing & Cap, > 2 1/4" through 2 1/2" door	A301-405*
	Housing Threaded, 1 1/8" through 1 7/8" door	A301-406*
36	Screw, Mtg. 1 3/8" through 1 7/8" door	A501-161
	Screw, Mtg. > 1 7/8" through 2 1/2" door	A501-818
37	Plate, Inside	A501-305
54	Plate, Outside	A508-399
56	Frame	A508-598
58	Spring Slide, Knob & Lever	A508-605
64	Slide, Restoring	A590-180
66	Cotter Pin	C503-008

* Specify finish

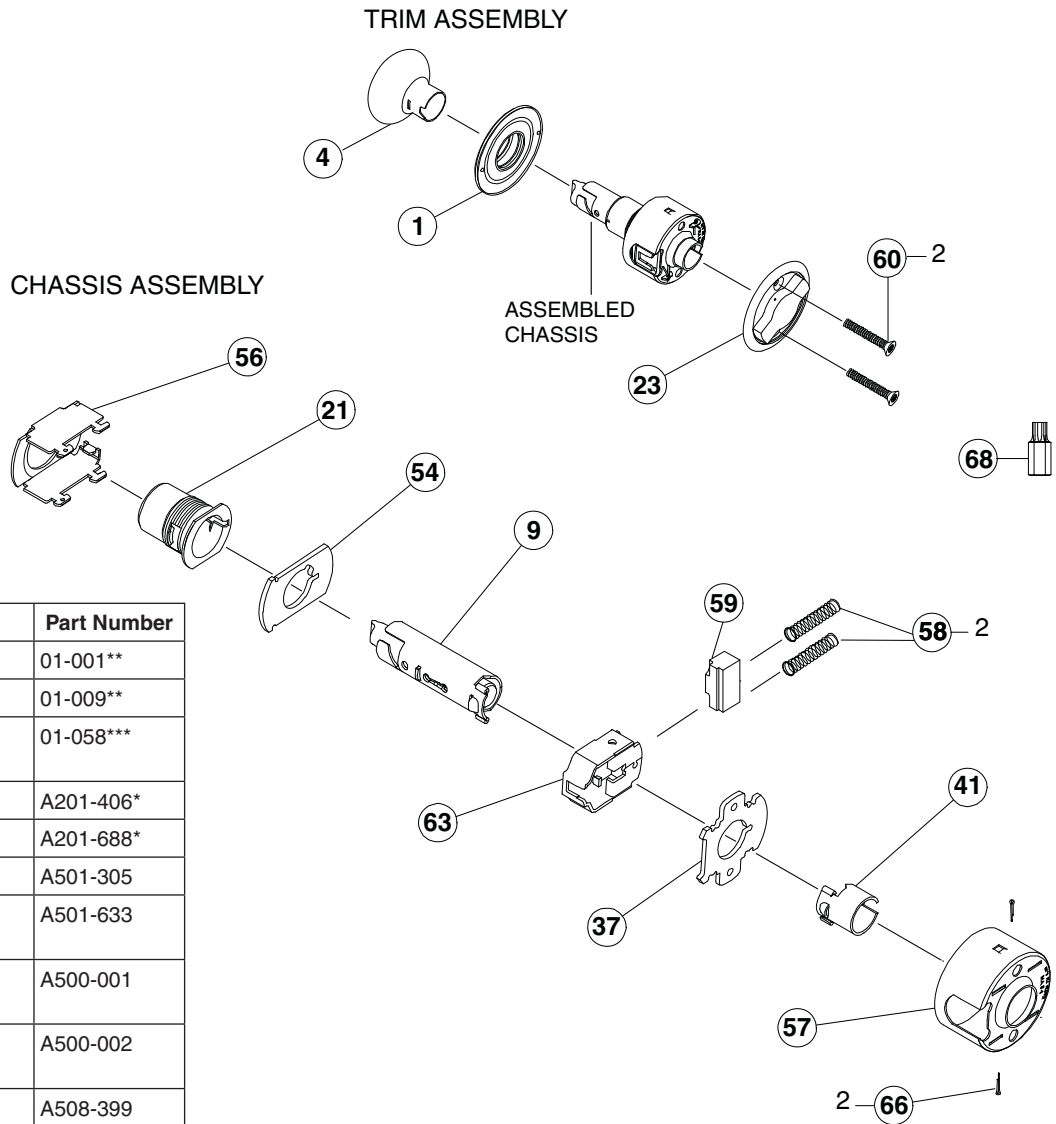
** Specify design and finish

*** Specify dimension, design and finish.

Note: Parts for doors 2 - 2 1/2" thick are for doors extended inside (EI) only.

A43D

Communicating Lock



Number	Description	Part Number
1	Rose, Outside	01-001**
4	Knob/Lever, Open	01-009**
9	Plunger and Button, Outside	01-058***
21	Hub and Cap, Outside	A201-406*
23	Turn and Plate, Inside	A201-688*
37	Plate, Inside	A501-305
41	Spindle & Catch, Inside 1 3/8" through 1 7/8" door	A501-633
	Spindle & Catch, Inside > 1 7/8" through 2 1/4" door	A500-001
	Spindle & Catch, Inside > 2 1/4" through 2 1/2" door	A500-002
54	Plate, Outside	A508-399
56	Frame	A508-598
57	Housing	A508-600
58	Spring Slide, Knob & Lever	A508-605
59	Stop Slide	A508-641
60	Screw, Mtg. 1 3/8" through 1 7/8" door	A508-649*
	Screw, Mtg. > 1 7/8" through 2 1/2" door	A508-650*
63	Slide, Non-restoring	A590-159
66	Cotter Pin	C503-008
68	Tamper Resistant Torx Tool Bit (One per case)	M504-426

* Specify finish

** Specify design and finish

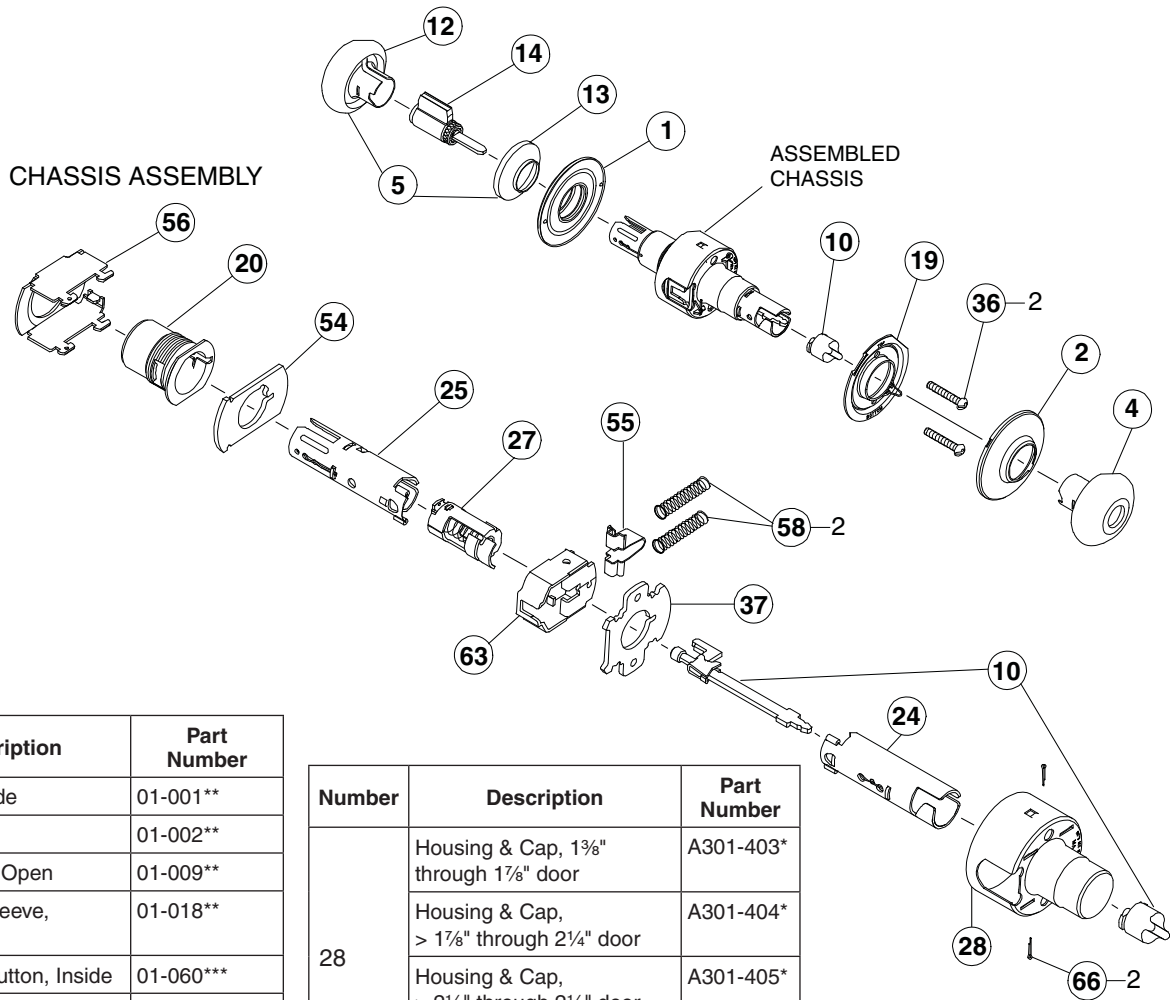
*** Specify dimension, design and finish.

Note: Parts for doors 2 - 2 1/2" thick are for doors extended inside (EI) only.

A53PD

Entrance Lock

TRIM ASSEMBLY



Number	Description	Part Number
1	Rose, Outside	01-001**
2	Rose, Inside	01-002**
4	Knob/Lever, Open	01-009**
5	Knob and Sleeve, Cylinder	01-018**
10	Plunger & Button, Inside	01-060***
12	Cylinder Knob (less sleeve)	01-080**
13	Sleeve Knob Cylinder	01-081**
14	Cylinder, 6-Pin	21-002**
	Cylinder, 6-Pin, Orbit	21-002-122**
19	Mounting Plate, Inside	A201-377
20	Hub and Cap, Outside	A201-399*
24	Spindle & Catch, Inside 1 3/8" through 1 7/8" door	A301-386
	Spindle & Catch, Inside > 1 7/8" through 2 1/4" door	A301-409
	Spindle & Catch, Inside > 2 1/4" through 2 1/2" door	A301-410
25	Spindle and Catch, Outside	A301-387
27	Cam, Outside	A301-402

Number	Description	Part Number
28	Housing & Cap, 1 3/8" through 1 7/8" door	A301-403*
	Housing & Cap, > 1 7/8" through 2 1/4" door	A301-404*
	Housing & Cap, > 2 1/4" through 2 1/2" door	A301-405*
	Housing Threaded, 1 1/8" through 1 7/8" door	A301-406*
36	Screw, Mtg. 1 3/8" through 1 7/8" door	A501-161
	Screw, Mtg. > 1 7/8" through 2 1/2" door	A501-818
37	Plate, Inside	A501-305
54	Plate, Outside	A508-399
55	Seat Spring, Knob and Lever	A508-597
56	Frame	A508-598
58	Spring Slide, Knob and Lever	A508-605
63	Slide, Non-restoring	A590-159
66	Cotter Pin	C503-008

* Specify finish

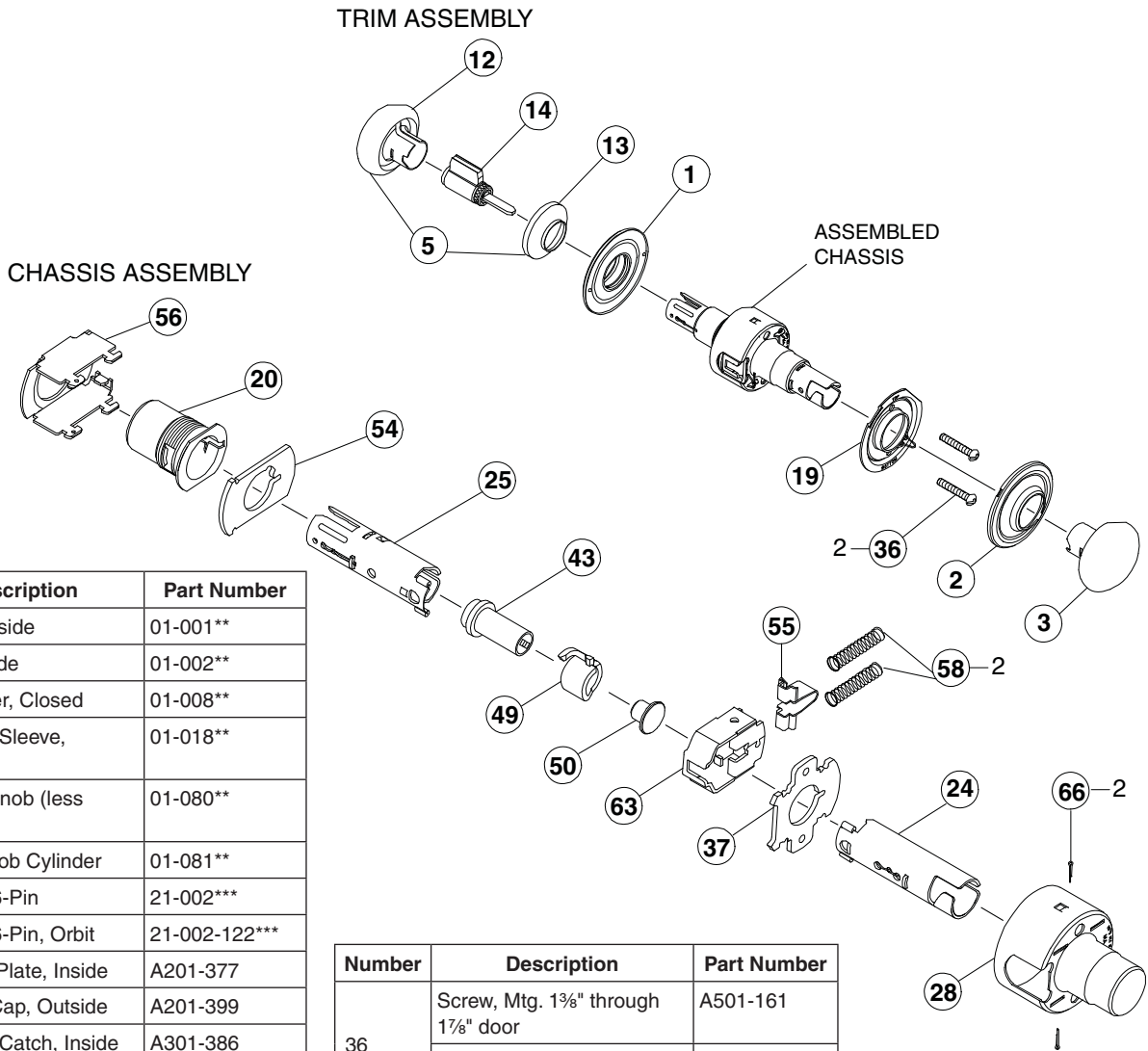
** Specify design and finish

*** Specify dimension, design and finish.

Note: Parts for doors 2 - 2 1/2" thick are for doors extended inside (EI) only.

A70PD

Classroom Lock



Number	Description	Part Number
1	Rose, Outside	01-001**
2	Rose, Inside	01-002**
3	Knob/Lever, Closed	01-008**
5	Knob and Sleeve, Cylinder	01-018**
12	Cylinder Knob (less sleeve)	01-080**
13	Sleeve Knob Cylinder	01-081**
14	Cylinder, 6-Pin	21-002***
	Cylinder, 6-Pin, Orbit	21-002-122***
19	Mounting Plate, Inside	A201-377
20	Hub and Cap, Outside	A201-399
24	Spindle & Catch, Inside 1 1/8" through 1 7/8" door	A301-386
	Spindle & Catch, Inside > 1 7/8" through 2 1/4" door	A301-409
	Spindle & Catch, Inside > 2 1/4" through 2 1/2" door	A301-410
25	Spindle and Catch, Outside	A301-387
28	Housing & Cap, 1 3/8" through 1 7/8" door	A301-403*
	Housing & Cap, > 1 7/8" through 2 1/4" door	A301-404*
	Housing & Cap, > 2 1/4" through 2 1/2" door	A301-405*
	Housing Threaded, 1 1/8" through 1 7/8" door	A301-406*

Number	Description	Part Number
36	Screw, Mtg. 1 3/8" through 1 7/8" door	A501-161
	Screw, Mtg. > 1 7/8" through 2 1/2" door	A501-818
37	Plate, Inside	A501-305
43	Plug, Cam	A501-721
49	Spiral Cam	A700-017
50	Spacer Cam	A501-791
54	Plate, Outside	A508-399
55	Seat Spring, Knob and Lever	A508-597
56	Frame	A508-598
58	Spring Slide, Knob and Lever	A508-605
63	Slide, Non-restoring	A590-159
66	Cotter Pin	C503-008

* Specify finish

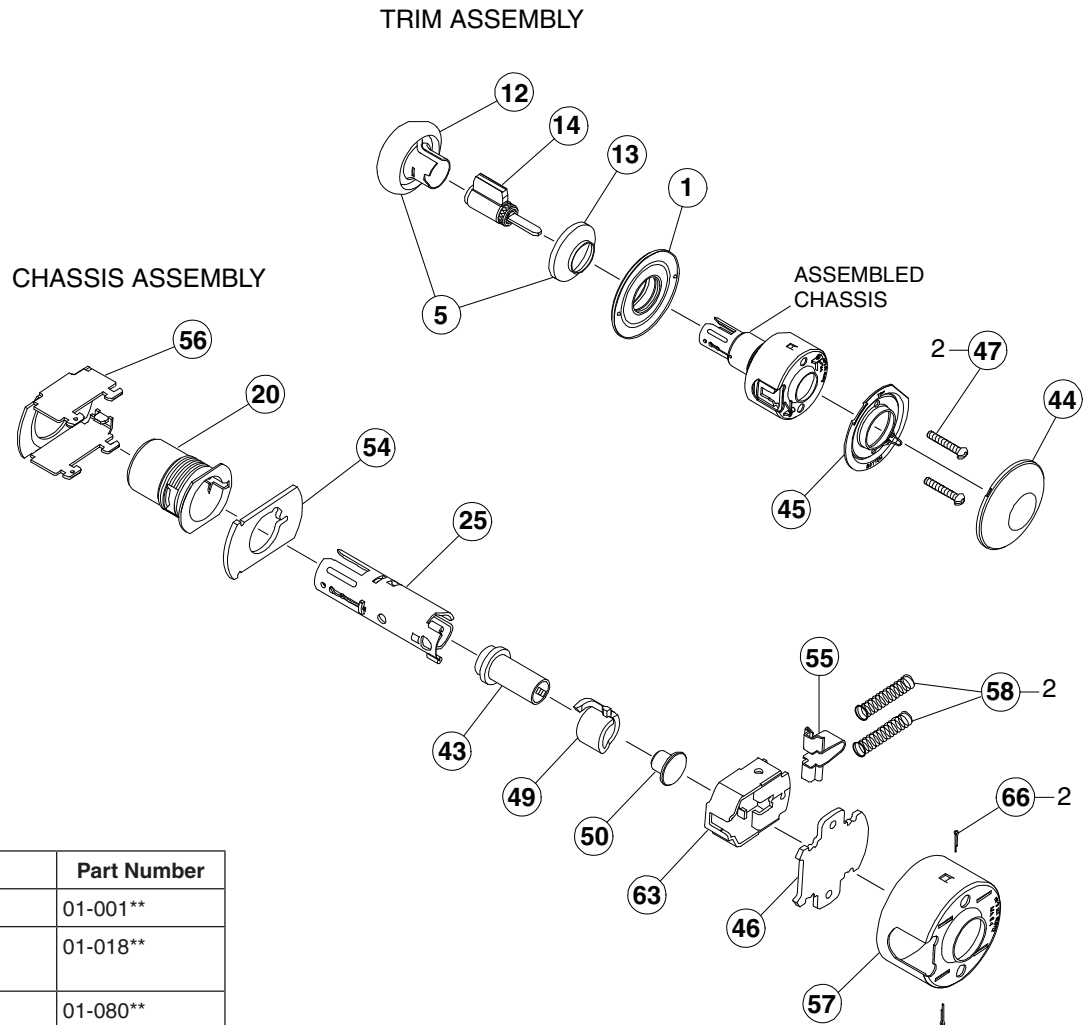
** Specify design and finish

*** Specify finish and keyway

Note: Parts for doors 2 - 2 1/2" thick are for doors extended inside (EI) only.

A79PD

Communicating Lock



Number	Description	Part Number
1	Rose, Outside	01-001**
5	Knob and Sleeve, Cylinder	01-018**
12	Cylinder Knob (less sleeve)	01-080**
13	Sleeve Knob Cylinder	01-081**
14	Cylinder, 6-Pin	21-002***
	Cylinder, 6-Pin, Orbit	21-002-122***
20	Hub and Cap, Outside	A201-399
25	Spindle and Catch, Outside	A301-387
43	Plug, Cam	A501-721
44	Rose, Inside	A501-766*
45	Plate, Mounting	A501-767
46	Plate, Inside	A501-768
47	Screw, Mtg. 1 3/8" through 2" door	A501-769
	Screw, Mtg. > 2" through 2 3/4" door	A501-770

Number	Description	Part Number
49	Spiral Cam	A700-017
50	Spacer Cam	A501-791
54	Plate, Outside	A508-399
55	Seat Spring, Knob and Lever	A508-597
56	Frame	A508-598
57	Housing	A508-600
58	Spring Slide, Knob and Lever	A508-605
63	Slide, Non-restoring	A590-159
66	Cotter Pin	C503-008

* Specify finish

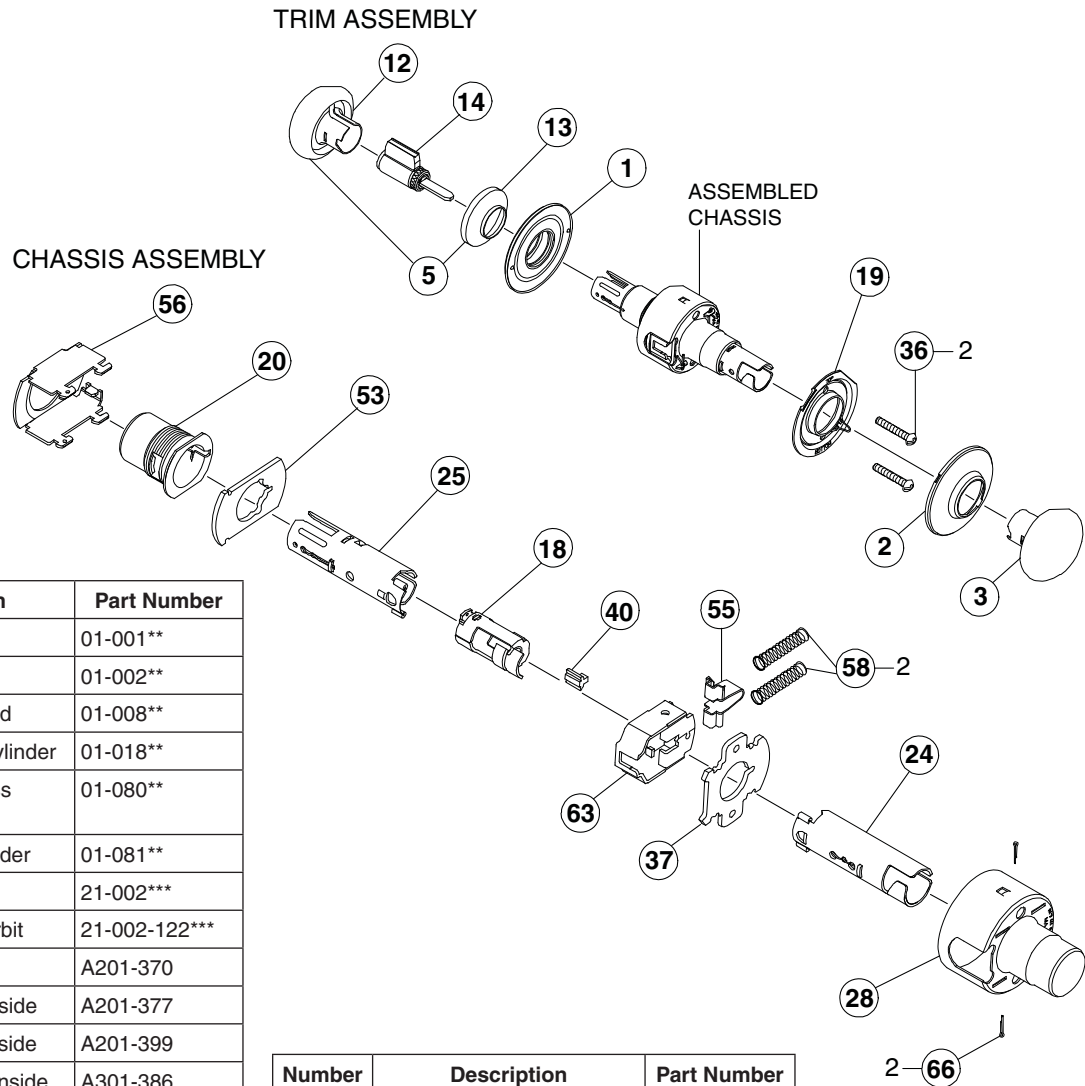
** Specify design and finish

*** Specify finish and keyway

Note: Parts for doors 2 - 2 1/2" thick are for doors extended inside (EI) only.

A80PD

Storeroom Lock



Number	Description	Part Number
1	Rose, Outside	01-001**
2	Rose, Inside	01-002**
3	Knob/Lever, Closed	01-008**
5	Knob & Sleeve, Cylinder	01-018**
12	Cylinder Knob (less sleeve)	01-080**
13	Sleeve Knob Cylinder	01-081**
14	Cylinder, 6-Pin	21-002***
	Cylinder, 6-Pin, Orbit	21-002-122***
18	Cam	A201-370
19	Mounting Plate, Inside	A201-377
20	Hub and Cap, Outside	A201-399
24	Spindle & Catch, Inside 1 5/8" through 1 7/8" door	A301-386
	Spindle & Catch, Inside > 1 7/8" through 2 1/4" door	A301-409
	Spindle & Catch, Inside > 2 1/4" through 2 1/2" door	A301-410
25	Spindle and Catch, Outside	A301-387
28	Housing & Cap, 1 3/8" through 1 7/8" door	A301-403*
	Housing & Cap, > 1 7/8" through 2 1/4" door	A301-404*
	Housing & Cap, > 2 1/4" through 2 1/2" door	A301-405*
	Housing Threaded, 1 1/8" through 1 7/8" door	A301-406*

Number	Description	Part Number
36	Screw, Mtg. 1 3/8" through 1 7/8" door	A501-161
	Screw, Mtg. > 1 7/8" through 2 1/2" door	A501-818
37	Plate, Inside	A501-305
40	Wedge	A501-615
53	Plate, Outside	A501-901
55	Seat Spring, Knob and Lever	A508-597
56	Frame	A508-598
58	Spring Slide, Knob and Lever	A508-605
63	Slide, Non-restoring	A590-159
66	Cotter Pin	C503-008

* Specify finish

** Specify design and finish

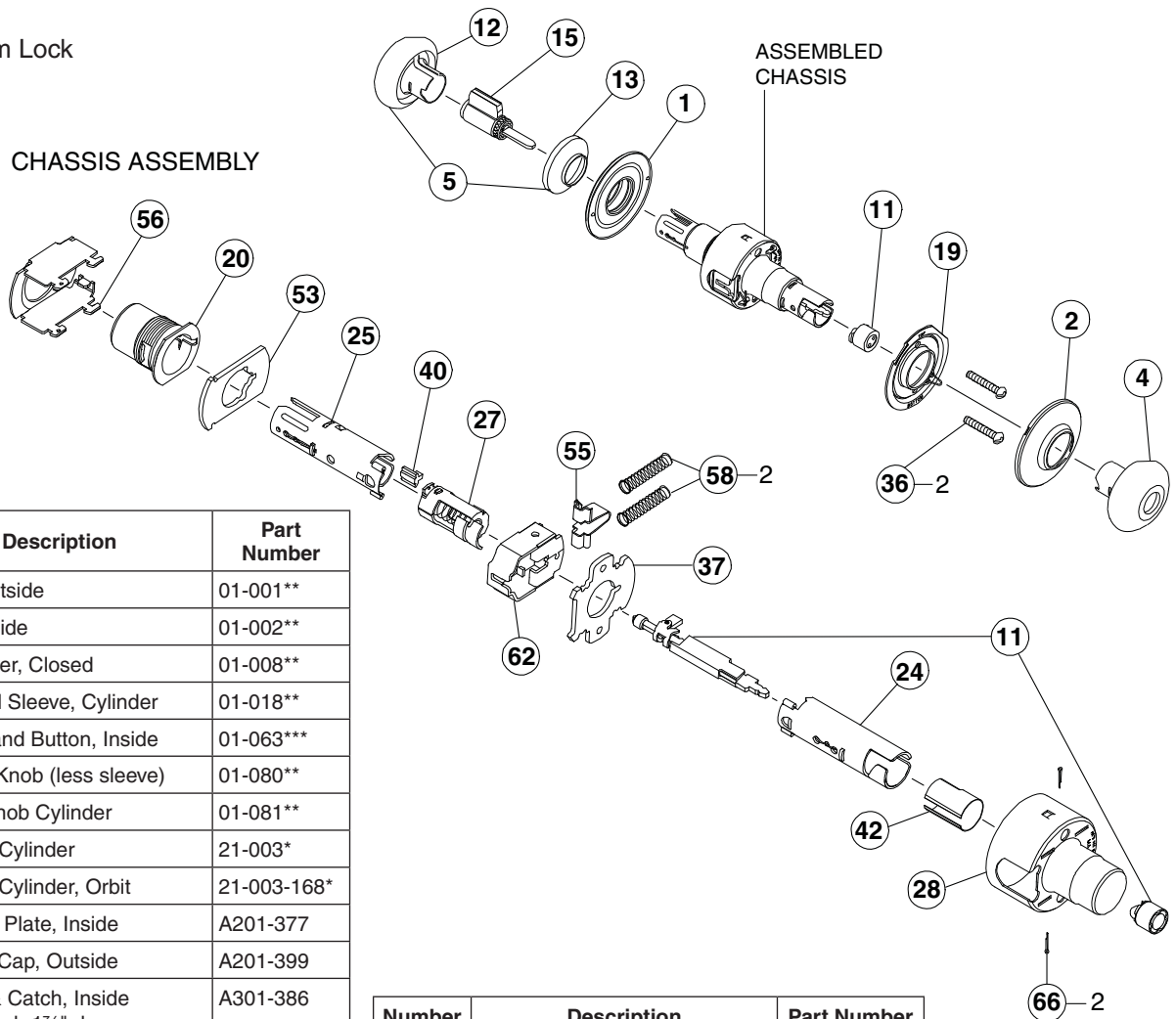
*** Specify finish and keyway

Note: Parts for doors 2 - 2 1/2" thick are for doors extended inside (EI) only.

A85PD

Faculty/Restroom Lock

TRIM ASSEMBLY



Number	Description	Part Number
1	Rose, Outside	01-001**
2	Rose, Inside	01-002**
3	Knob/Lever, Closed	01-008**
5	Knob and Sleeve, Cylinder	01-018**
11	Plunger and Button, Inside	01-063***
12	Cylinder Knob (less sleeve)	01-080**
13	Sleeve Knob Cylinder	01-081**
15	Indicator Cylinder	21-003*
	Indicator Cylinder, Orbit	21-003-168*
19	Mounting Plate, Inside	A201-377
20	Hub and Cap, Outside	A201-399
24	Spindle & Catch, Inside 1 $\frac{3}{8}$ " through 1 $\frac{7}{8}$ " door	A301-386
	Spindle & Catch, Inside > 1 $\frac{7}{8}$ " through 2 $\frac{1}{4}$ " door	A301-409
	Spindle & Catch, Inside > 2 $\frac{1}{4}$ " through 2 $\frac{1}{2}$ " door	A301-410
25	Spindle and Catch, Outside	A301-387
27	Cam, Outside	A301-402
28	Housing & Cap, 1 $\frac{3}{8}$ " through 1 $\frac{7}{8}$ " door	A301-403*
	Housing & Cap, > 1 $\frac{7}{8}$ " through 2 $\frac{1}{4}$ " door	A301-404*
	Housing & Cap, > 2 $\frac{1}{4}$ " through 2 $\frac{1}{2}$ " door	A301-405*
	Housing Threaded, 1 $\frac{1}{8}$ " through 1 $\frac{7}{8}$ " door	A301-406*

Number	Description	Part Number
36	Screw, Mtg. 1 $\frac{3}{8}$ " through 1 $\frac{7}{8}$ " door	A501-161
	Screw, Mtg. > 1 $\frac{7}{8}$ " through 2 $\frac{1}{2}$ " door	A501-818
37	Plate, Inside	A501-305
40	Wedge	A501-615
42	Sleeve, Swivel	A501-710
53	Plate, Outside	A501-901
55	Seat Spring, Knob and Lever	A508-597
56	Frame	A508-598
58	Spring Slide, Knob and Lever	A508-605
62	Slide, Restoring	A590-158
66	Cotter Pin	C503-008

* Specify finish

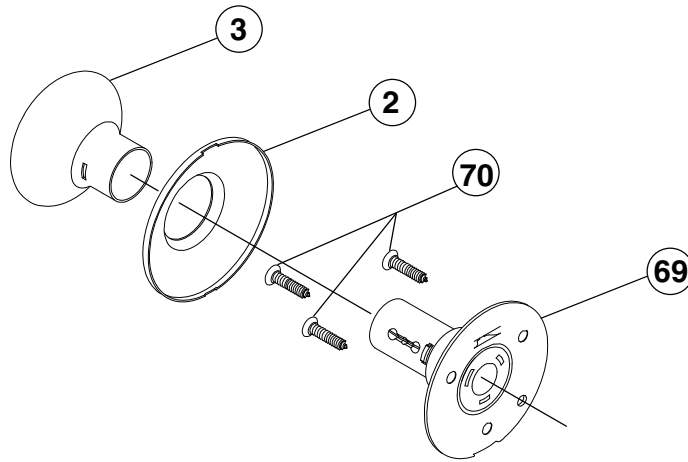
** Specify design and finish

*** Specify dimension, design and finish.

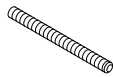
Note: Parts for doors 2 - 2 $\frac{1}{2}$ " thick are for doors extended inside (EI) only.

A170

Dummy Trim



A501-167 Threaded Rod
Use for mounting two (2) A170 sets
as double dummy set.



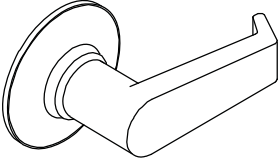
Number	Description	Part Number
2	Rose, Inside	01-002**
3	Knob/Lever, Closed	01-008**
69	Non-Threaded Chassis, Less Knob and Rose	A201-330
70	Screws, Mtg.	C603-897

** Specify design and finish

Knob and Lever Designs

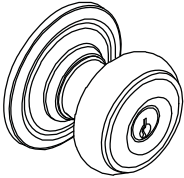
Wrought brass, bronze or stainless steel. Lever is pressure cast zinc, plated to match BHMA symbols.

Levon (LEV) *



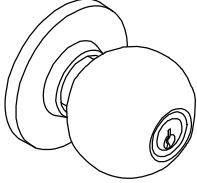
Available Finishes:
605, 606, 609, 612, 613, 625, 626

Georgian (GEO)



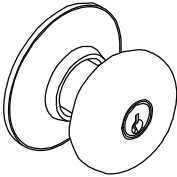
Available Finishes:
605, 606, 609, 612, 613, 625, 626

Orbit (ORB)



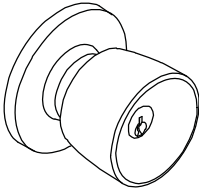
Available Finishes:
605, 606, 609, 612, 613, 625, 626

Plymouth (PLY)



Available Finishes:
605, 606, 609, 612, 613, 625, 626, 629, 630

Tulip (TUL)

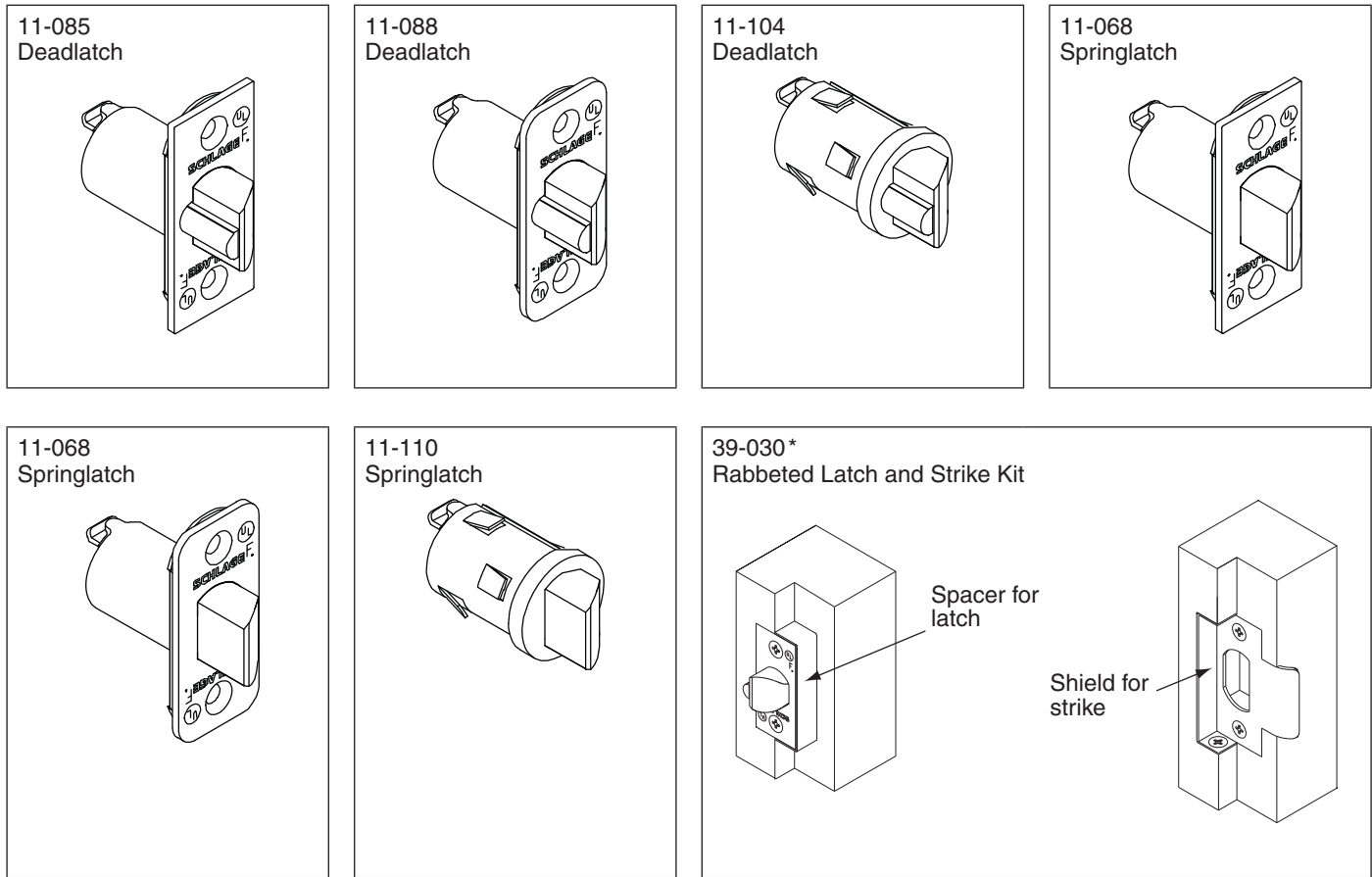


Available Finishes:
605, 606, 609, 612, 613, 625, 626

* LEV lever is available as inside trim only on deadlatching functions.

Latches

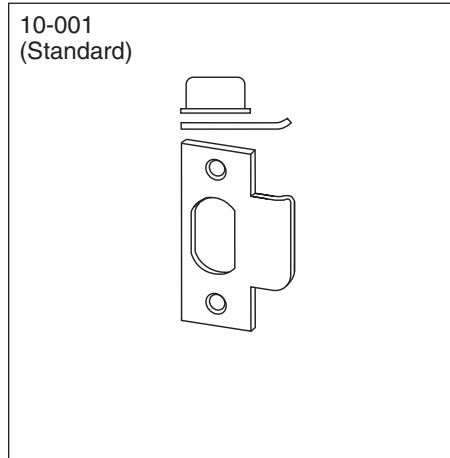
All latches have adjustable brass or bronze faceplates for flat or beveled doors.



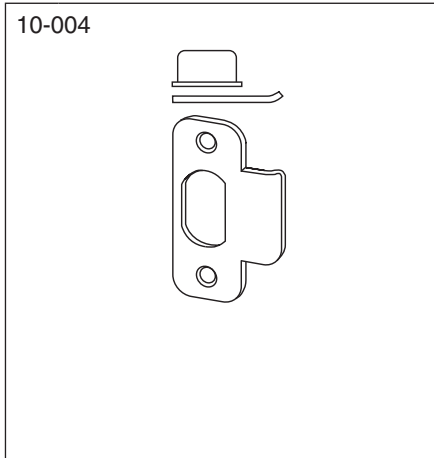
Backset	Description	Deadlatch 1/2" Throw	Springlatch 1/2" Throw	Housing Diameter
2 3/8"	Square corner, standard 1" x 2 1/4"	11-085	11-068	7/8"
	1/4" Radius round corner, 1" x 2 1/4"	11-088	11-069	
	1" Circular drive-in (non-UL)	11-104	11-110	1"
2 3/4"	Square corner, 1" x 2 1/4"	11-091	11-111	7/8"
	Square corner, 1 1/8" x 2 1/4"	11-096	11-116	1"
	1/4" Radius round corner, 1" x 2 1/4"	11-092	11-112	7/8"
	1" Circular drive-in (non-UL)	11-105	11-113	1"
3 3/4"	Square corner, 1 1/8" x 2 1/4"	14-010	14-028	1"
–	Rabbeted latch and strike kit	39-030*		–

* Adapts square corner latch and strikes to 1/2" rabbeted door and frame preparations. Available finishes: 605, 626

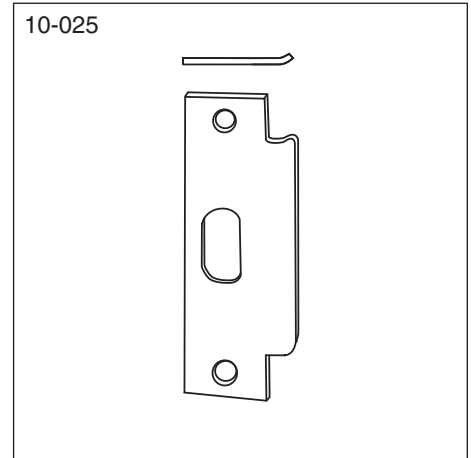
Strikes



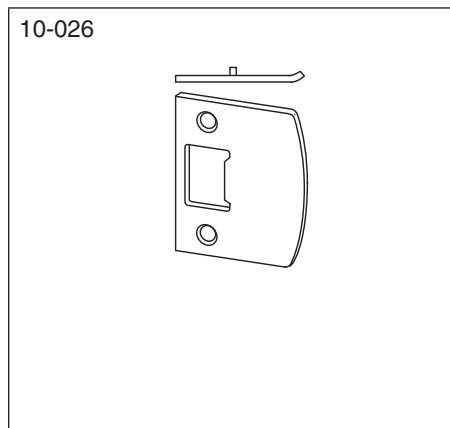
Square Corner
Size: 1 1/8" x 2 3/4" x 3/32"
Lip Length: 1", 1 1/8" (std), 1 1/4", 1 1/2", 1 3/4", 2
Includes C603-623 strike box



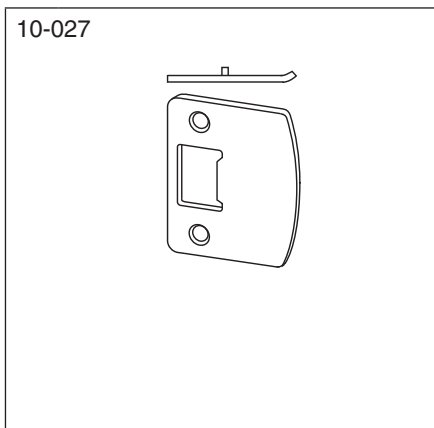
1/4" Radius Round Corner
Size: 1 1/8" x 2 3/4" x 3/32"
Lip Length: 1 1/8"
Includes C603-623 strike box



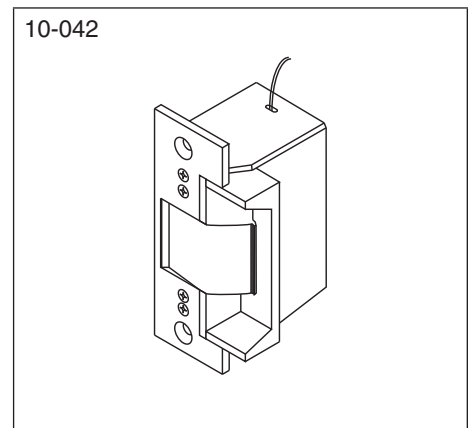
ANSI Prep. A115.2
Size: 1 1/4" x 4 7/8" x 3/32"
Lip Length: 1 3/16" (std), 1 3/8"
If required, C603-623 strike box must be ordered separately.



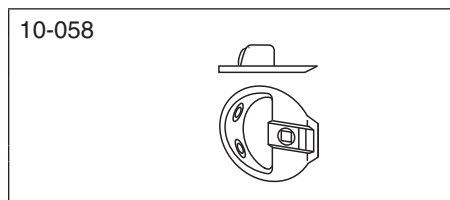
Full Lip, Square Corner
Size: 1 1/8" x 2 1/4" x 3/16"
Lip Length: 1 1/8"



Full Lip, 1/4" Radius Round Corner, No Box
Size: 1 1/8" x 2 3/4" x 3/32"
Lip Length: 1 1/8"



Electric Strike
Size: 1 1/4" x 4 7/8" x 3/32"
Voltage: 24 VAC, 12 VDC
Not designed for continuous duty and electrical locking. Available finishes: 606, 626



Circular Adjustable
Size: 1 3/4" diameter
Lip Length: 1 1/32"

Optional Torx Screw Packs

Number	Description
C203-311	Qty 4, Latch and Std Strike Screws, #8-32 x 1/2" (T-15)
C203-312	Qty 2, Latch and Std Strike Screws, #8-32 x 1/2" (T-15) Qty 2, ANSI Strike Screws, #12-24 x 1/2" (T-20)

Torx Tools

Number	Description
M504-425	T-15 Torx Tool
M504-426	T-20 Torx Tool

Cylinders

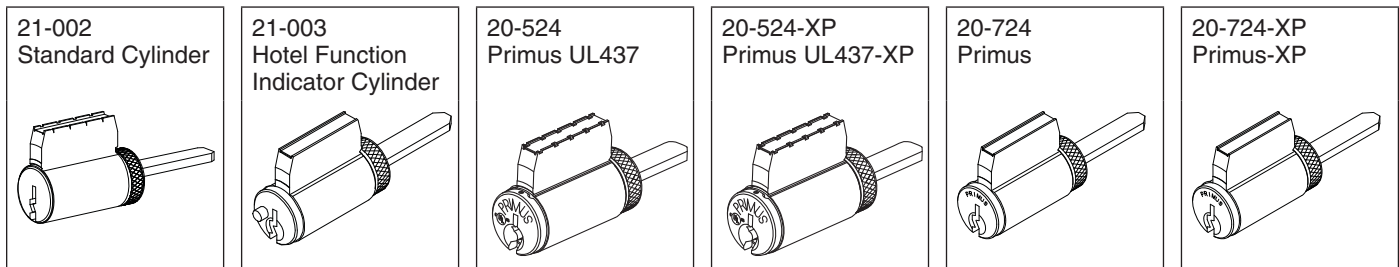
Cylinder Units and Parts

Schlage locks are provided with cylinder units precision built to extremely close tolerances and the highest standards of accuracy. Phosphor bronze springs, nickel silver keys, and pins are used throughout the Schlage offering. The best combination of materials is used to ensure the manufacture of cylinders with ease of operation and long wear. To order locks less cylinder units, change product suffix letter "P" and "L". Example: A53LD. Primus® cylinders are available when key control and physical security are important concerns.

Cylinder Units

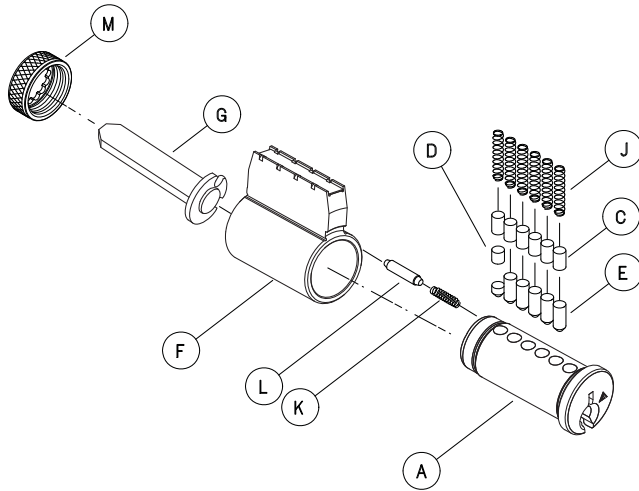
Function	Design	Conventional Cylinders	Primus® Cylinders	
			Primus	Primus UL437
All Functions Except A85	Non-Orbit	21-002	20-724	20-524
	Orbit	21-002-122	21-724-122	20-524-122
A85 Function	Non-Orbit	21-003	Not Available	
	Orbit	21-003-168		

NOTE: To order any of the XP products, add the suffix "-XP" to the end of the complete cylinder number.

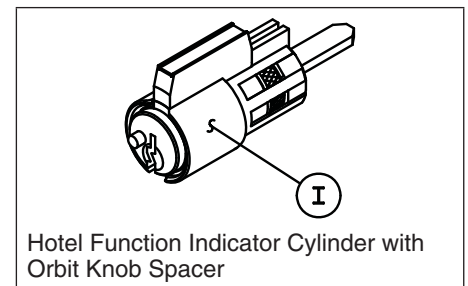
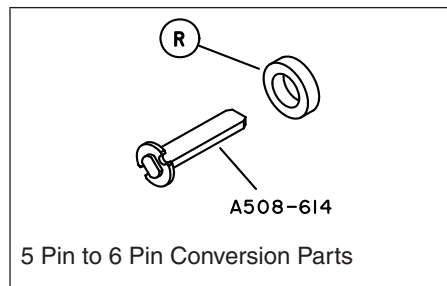
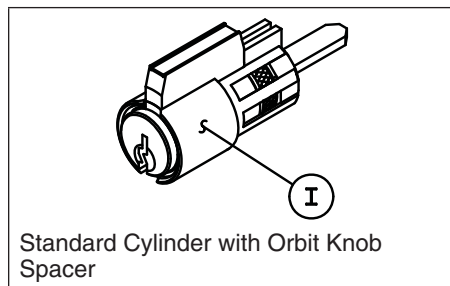
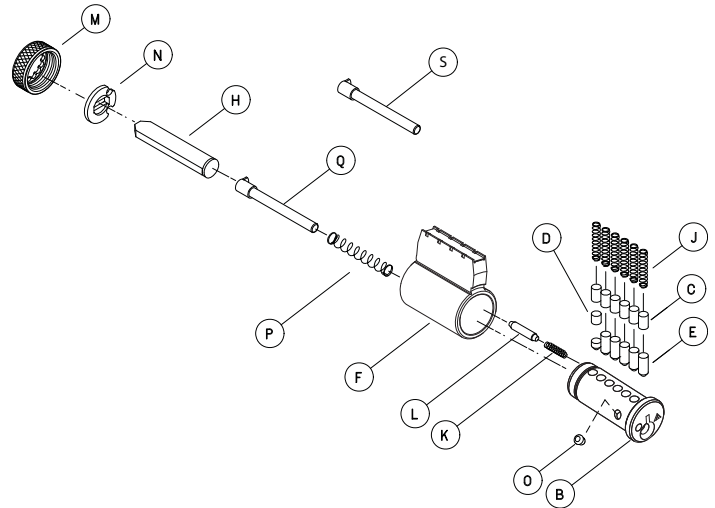


Cylinder Parts

Standard Cylinder



Hotel Function Indicator Cylinder



	Part Number	Description
A	33-230	Cylinder plug, 6 pin for 21-003
B	33-235	Cylinder plug, indicator, 6 pin for 21-003
C	34-101 – 34-103	#1 through #3 Top pin
D	34-202 – 34-209	#2 through #9 Master pin
E	34-300 – 34-309	#0 through #9 Bottom pin
F	A201-698	Shell, 6 pin Conventional, Everest®
G	A201-934	Tailpiece, A73 Classic conventional
	A301-337*	Tailpiece, Primus® & Everest
	A301-338	Tailpiece, Primus & Everest Orbit
	A301-339	Tailpiece, A73 Primus & Everest
	A508-606	Tailpiece, Classic conventional
H	A508-614	Tailpiece, Classic conventional, Orbit
	A501-693**	Tailpiece, A85 Classic and Everest Orbit
	A501-991**	Tailpiece, A85 Classic/Everest Non-Orbit

	Part Number	Description
I	A508-640	Spacer for Orbit Knob
J	C503-113	Pin Tumbler spring
K	C503-115	Cap Pin Spring
L	C503-116	Cap Pin
M	C503-118	Cap
N	C503-767	Driver for 21-003 (A85, Hotel)
O	C603-195	Obstruction Pin for 21-003
	C604-362	Obstruction Pin, Everest
P	C604-144	Indicator Pin Spring, Classic
	C604-369	Indicator Pin Spring, Everest
Q	C604-368	Indicator Pin, Everest
R	XA10-594	Spacer for 5 pin cylinder with 6 pin Knob
S	C604-371	Indicator Pin, Classic

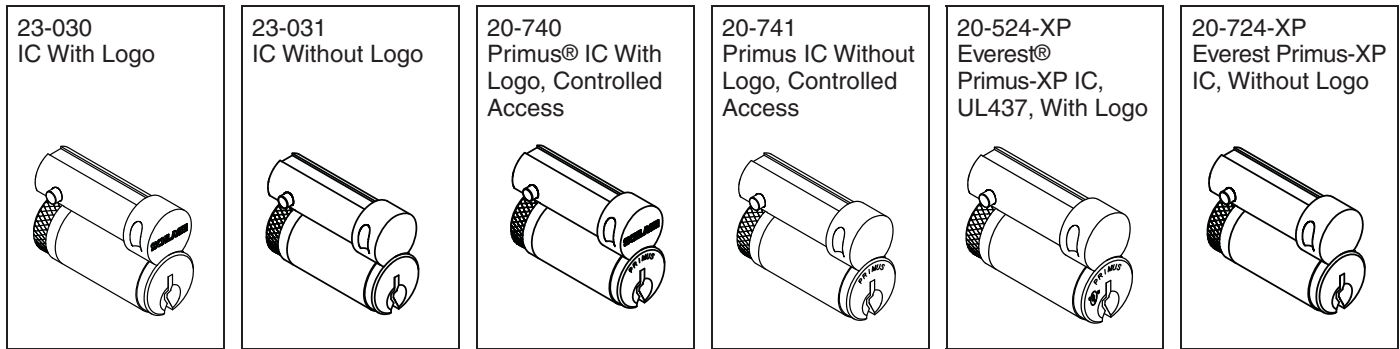
* Requires C603-098 security disc.

** Requires C503-767 driver.

Interchangeable Cores, Designs, and Parts

Available for all A-Series keyed functions, except Hotel/Motel function A85, as complete locks or in retrofit kits. Existing installations can be retrofitted without removing lock from door. To order locks with interchangeable cores, change product suffix letter "P" to "R". Example: A53RD. To order locks less interchangeable cores, change product suffix letter "P" to "J". Example: A53JD. Primus® cores are available when key control and physical security are important concerns.

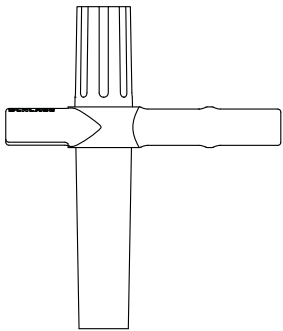
Interchangeable Cores (IC)



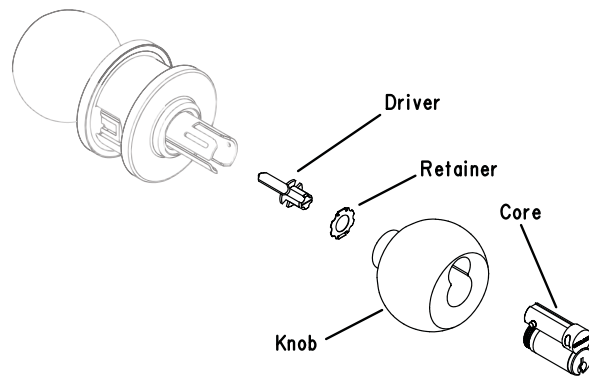
Interchangeable Core Accessory and Service Parts

Part Number	Description
01-026	Knob only
01-053	Driver and Retainer (C604-307 and A501-941)
01-054	Knob, Core, Driver and Retainer
A501-941	Retainer

Part Number	Description
C604-307	Driver
M504-413	Installation Tool
20-524-122-XP	Everest Primus IC, UL, Orbit,
20-724-122-XP	Everest Primus IC, Orbit Without Logo



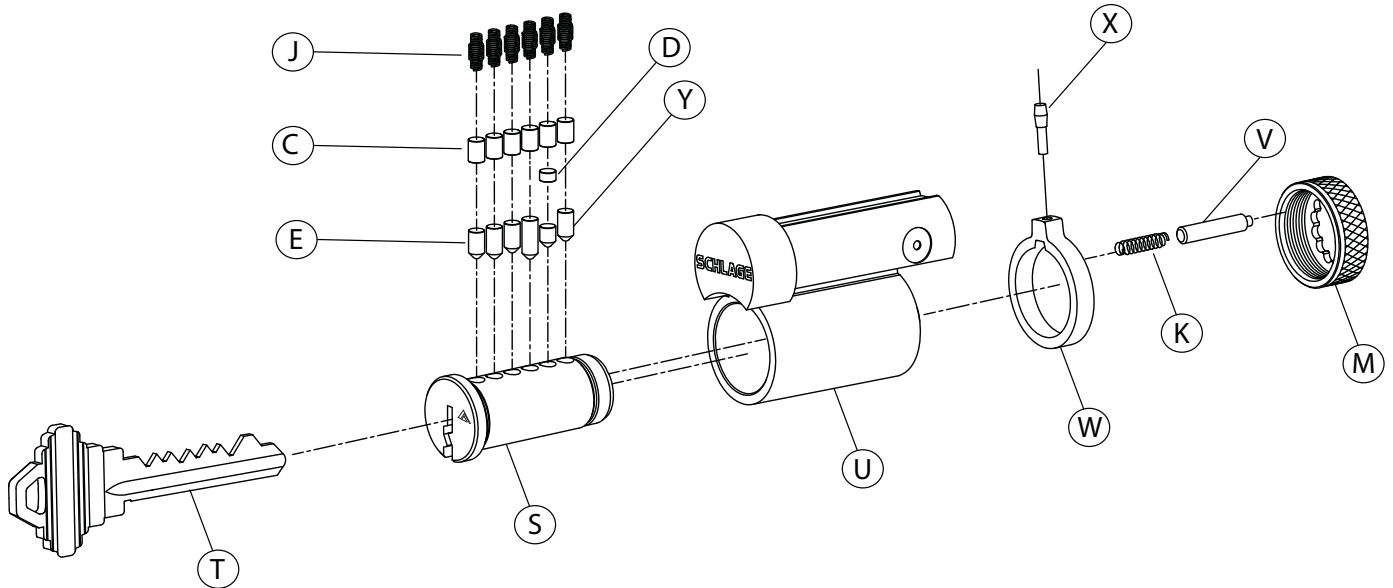
M504-413
Installation Tool



01-054
Retrofit Kit

Interchangeable Core

To remove the interchangeable core, insert control key and turn 15° to the right until action stops. Pulling on key will extract core from the knob. To install a new core, insert control key and push core into housing, rotate key 15° to the right and insert core completely. Rotate key back to original position and remove control key.



	Number	Description
C	34-101 through 34-103	#1 thru #3 Top Pin
D	34-202 through 34-209	#2 thru #9 Master Pin
E	34-300 through 34-309	#0 thru #9 Bottom pin
J	C503-113	Pin Tumbler spring
K	C503-115	Cap Pin Spring
M	C503-118	Cap
S*	33-235	Plug, Everest IC, Hotel Function
T	35-056	Control Key, Blank, Standard Bow
	48-056	Control Key,Cut, Standard Bow
U*	B220-282	Shell, IC, 6 pin Classic, With Logo
	B220-283	Shell, IC, 6 pin Classic, Hotel
V	C603-827	Cylinder Cap Pin
W*	C603-956	Actuating Ring
X*	C603-964	Actuating Pin (Control Top Pin)
Y*	C603-967	Control Bottom Pin

* Parts not compatible with cores manufactured before 1991.

Important: Use only graphite or similar material for cylinder lubrication. Under no circumstance should any other type of material be introduced into the cylinder.

Finishes

Schlage Lock finishes are durable, top quality finishes obtained by the careful processing of solid brass, bronze, stainless steel, or other materials. When required, a protective clear coating is applied and cured under high temperature. It is important that climatic conditions and usage be considered when selecting finishes. This is especially true where strong corrosive vapors, humid climate, or sea air, may, in a short time, have a damaging effect on metal finishes.

The longevity and preservation of the finish appearance is determined by base metal and finishing process. Clear protective coating or other organic finishing applications may require different methods of cleaning and care. As an example, non-clear coated finishes should not be cleaned with soaps or any solvents; organically coated surfaces should periodically be cleaned with a mild non-abrasive soap and buffed lightly with a clean cloth. The type of base metal and finish must be considered when applying any cleaning or preservative method.

In some instances, the most appropriate BHMA (Builders Hardware Manufacturers Association) finish symbols are used to indicate similarity of appearance regardless of base metal or finishing process. A-Series levers are zinc based material and are plated to match finishes indicated. Finish numbers in the 600-Series are the BHMA industry standard. The nearest old U.S. equivalent code designations are shown in parentheses.

Code		Description
605	US (3)	Bright Brass
606	US (4)	Satin Brass
609	US (5)	Antique Brass
612	US (10)	Satin Bronze
613	US (10B)	Oil Rubbed Bronze
625	US (26)	Bright Chromium Plated
626	US (26D)	Satin Chromium Plated
629	US (32)	Bright Stainless Steel
630	US (32D)	Satin Stainless Steel

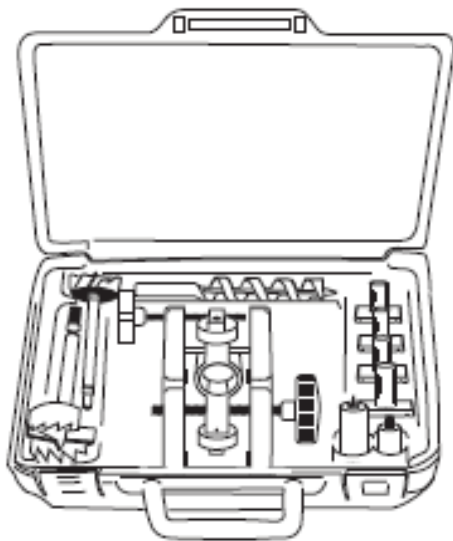
Lubrication

A-Series lock mechanisms are designed for durability and seldom need servicing. During assembly, points of contact which require lubrication are given an application of high quality petroleum-based grease. A small amount of graphite is applied to the pin tumbler plug during assembly of the cylinder unit. Further servicing is not required for an extended period, except where locks are subjected to extremely heavy traffic. If located in particularly dusty or dirty areas, the grease may become contaminated resulting in unsatisfactory operation. The case mechanism should then be cleaned in a non-corrosive petroleum solvent and relubricated. Graphite should only be applied to the cylinder unit by blowing a small quantity into the keyway.

Note: Precautionary measures according to solvent manufacturers instructions should always be followed.

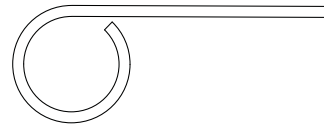
Installation Tools and Kits

Boring jig and tools are designed to provide fast and accurate lock installation. A complete kit or individual tools can be ordered for preparing doors and jambs for Schlage products. Shown below, kit 40-147 is for A, AL, B, D, F, H, and S200-series locks, and adjusts for 2³/₈" and 2³/₄" backsets. The kit is designed for special high speed hexagonal shank boring bits and equipped with an adaptor to form an integrated unit for boring doors 1⁵/₁₆" to 1¹⁵/₁₆" thick.

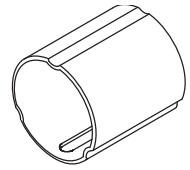


40-147 Kit Contents

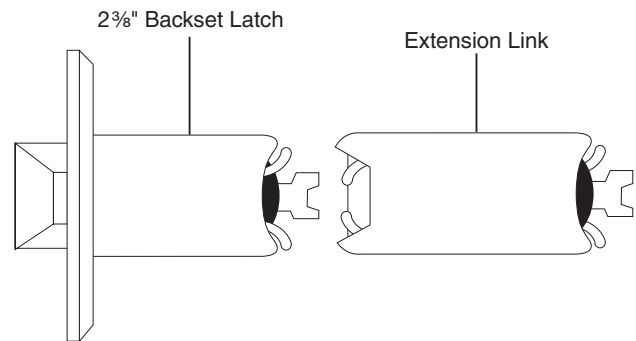
Part Number	Description
40-015	7/8" Bit
40-029	Full Lip Strike Chisel
40-030	1 1/8" x 2 3/4" Strike Chisel
40-031	1" x 2 1/4" Latch Chisel
40-032	1 1/8" x 2 1/4" Latch Chisel
40-035	7/8" Strike Locator
40-148	Installation Jig
40-175	1" Bit
40-176	2 1/8" Multi Spur Bit
40-177	1 1/2" Multi Spur Bit
40-178	Quick Change Bit Adapter
40-179	1" Strike Locator
M504-497	Case Only



M504-271
Pin Wrench
For depressing knob catches
on A and D-Series locks



G506-815
Sleeve



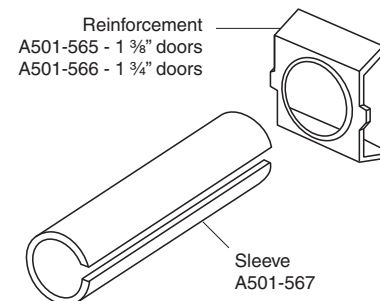
41-005
5 inch Extension Link

Long Backsets

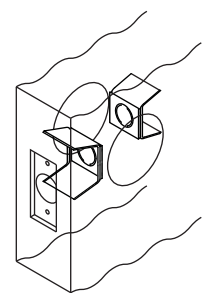
Backsets 5 inches and over require extension link (41-005). A-Series locks with long backsets are normally furnished with 1-inch faceplates and 7/8" housings. A link installed in 1-inch latch holes requires one G506-815 sleeve (order separately) to join the latch and link.

Reinforcement Kit

The Schlage 37-001 reinforcement kit reinforces and helps prevent the collapse of hollow metal doors when locksets are tightly mounted. This kit should be used with long backsets for installations in hollow metal doors to prevent lateral movement of the latch bolt. Specify door thickness (1 3/8" or 1 3/4") when ordering.



37-001
Reinforcement Kit

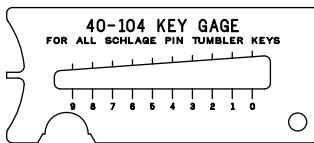
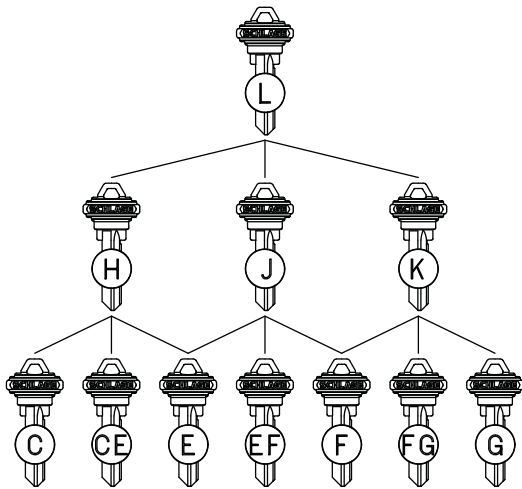


Placement of
reinforcements in
hollow metal door.

Keying

Key Array Chart

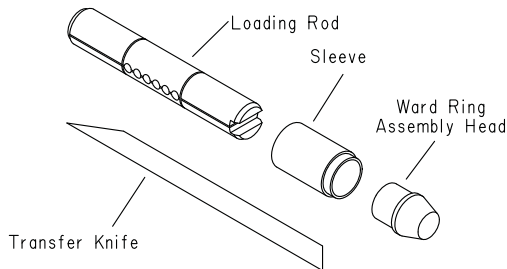
The Schlage Masterkey Department determines and makes the final decision in the selection and use of key sections. Other keyways than shown below are available. Allocation of other keyways is based on need and extent of the final system. Priority is given to key systems that require a large number of cylinders and families of key sections to satisfy their keying requirements. Contact your Schlage representative for availability of other keyways.



40-104
Key Gauge
Order the Schlage key gauge to accurately measure the depth of key cuts.

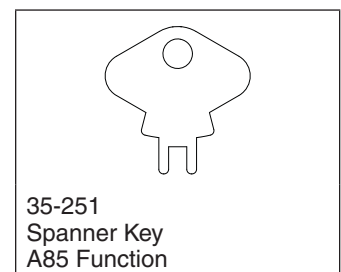
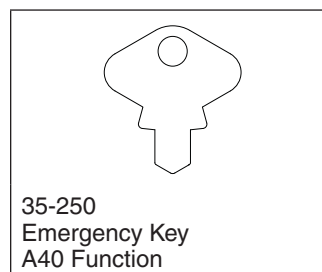
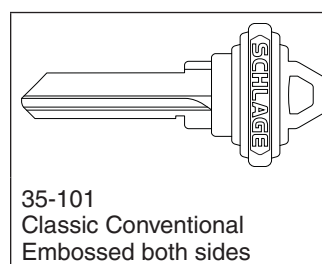
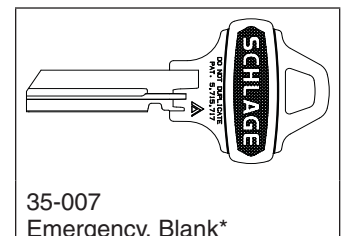
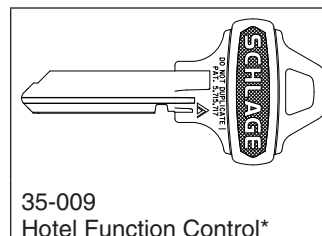
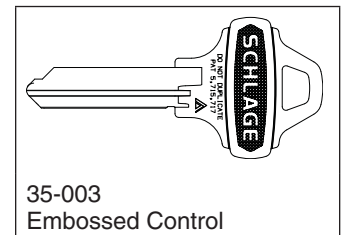
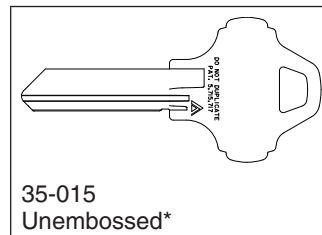
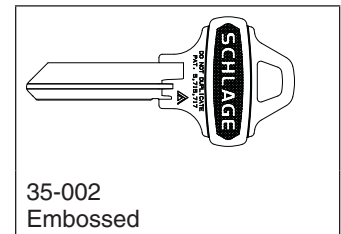
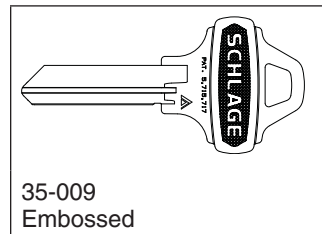
40-116 Cylinder Body Loading Tool

A compact precision tool for loading top pins and springs, and for installation of ward rings into grooves or a warded cylinder plug. Furnished with complete assembly instructions.



Pin Tumbler Keys

All Schlage locks come standard with two nickel silver keys embossed with the Schlage logo. The Schlage key nickel silver alloy provides the base for cutting accuracy and long cylinder wear. Schlage will stamp "DO NOT DUPLICATE" across the bow of all versions of its keys at no extra charge when specified on orders.



* Stamped with "Do Not Duplicate"

Model MA84 Plunger Installation

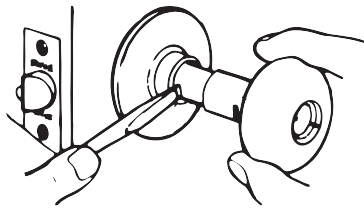
Note: These instructions are for installation of plunger and button for model MA84 (1984 to present) A-Series locks. Model MA45 (1945 to 1983) locks may need replacement of additional parts, as indicated in the instructions.

Outside Plunger Assembly

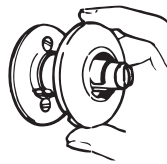
Function A40S

Disassemble Lock

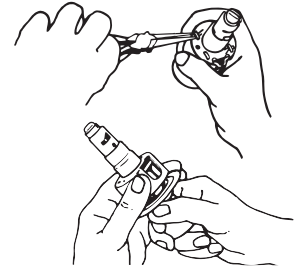
1. Depress knob catch and remove inside knob



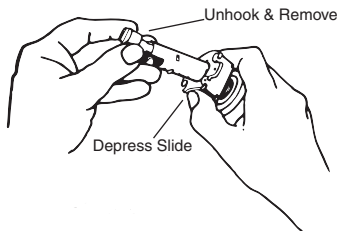
2. Position screw driver into slot on edge of rose and snap off rose. Unscrew mounting screws and remove inside mounting plate.



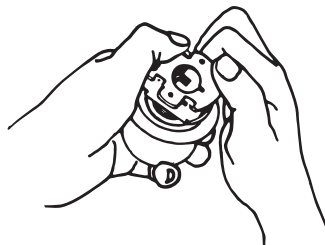
3. Straighten and remove cotter pins. Rotate housing slightly in either direction and remove from lock chassis. **Remove cotter pins and housing.**



4. Depress slide, unhook and remove both inside plunger and spindle.



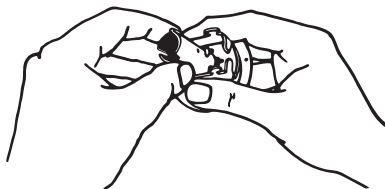
5. Remove hub plate (hold palms of hands around lock to prevent springs from escaping slide). Press forward with thumbs against frame tabs while pushing upward with index finger to disengage plate.



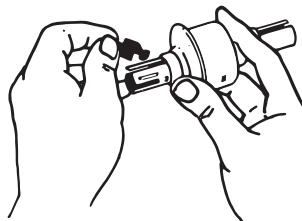
6. Remove slide and springs. If necessary to remove outside hub plate, rotate knob 180° to remove. Turn and pull outside knob and spindle from lock frame (if replacing parts from model M45 lock, discard old outside knob, spindle, and keyway). If necessary, change outside hub plate.



7. Insert new outside spindle through lock frame from inside of frame. Also insert new keyway. Reposition hub plate, slide, and springs in frame.



8. Place new bar (less button assembly) into position through spindle and into lock frame. Make sure that bar engages keyway in outside spindle.



9. Place new plunger button assembly onto plunger bar and snap firmly into bar. Slide new knob onto spindle, depress knob catch and push knob into place until knob catch engages in slot on knob.



Lock Assembly

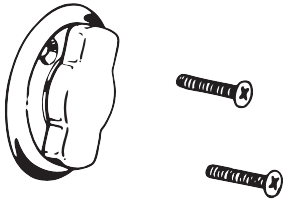
10. Reverse steps to reassemble complete lock and trim.

Outside Plunger Assembly

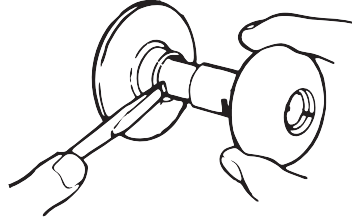
Function A43D

Disassemble Lock

1. Rotate thumbturn 60° to expose and remove mounting screws. Remove lock from door.



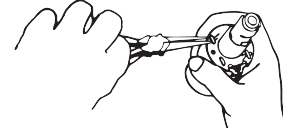
2. Depress knob catch and remove knob



3. Refer to steps 3 through 6 in "Model MA84 Plunger Installation" on page 25 for disassembly of chassis.

Outside Button and Bar Assembly

4. Insert new outside spindle and plunger assembly through lock frame from inside of frame. Re-position hub plate, slide and springs in frame.

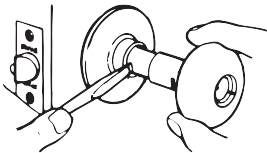


5. Slide knob onto spindle, depress knob catch and push knob into place until knob catch engages in slot on knob.
6. Reverse steps to reassemble complete lock and trim.

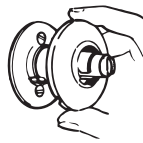
Inside Plunger Assembly

Functions A30D, A40S, A53PD, A85PD

1. Depress knob catch and remove inside knob.

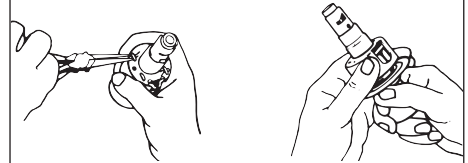


2. Position screwdriver into slot on edge of rose and snap off rose.
3. Unscrew mounting screws and remove inside mounting plate.

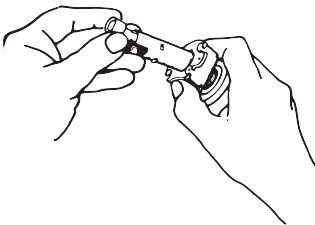


Remove Cotter Pins and Housing

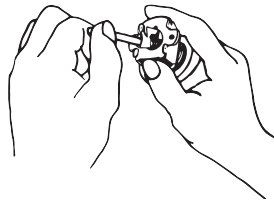
4. Straighten and remove cotter pins. Rotate housing slightly in either direction and remove from lock chassis.



5. Depress slide, unhook old plunger by lifting, and remove both plunger and spindle.



6. Insert new plunger bar (less button assembly), depress slide and push plunger bar while releasing slide to hook into place.



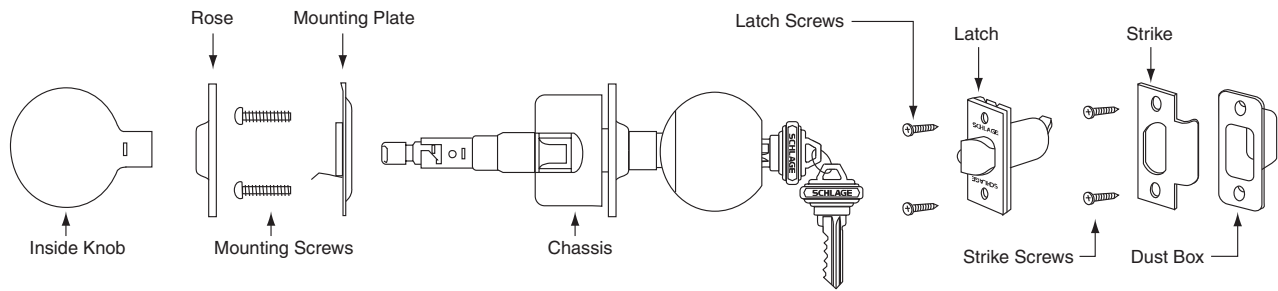
7. Install new spindle over bar, rotate slightly, and push into place (slot on spindle should be on same side as slide).



8. Align plunger button assembly so lug fits into slot on spindle. Position plunger button assembly onto bar and snap firmly into place.



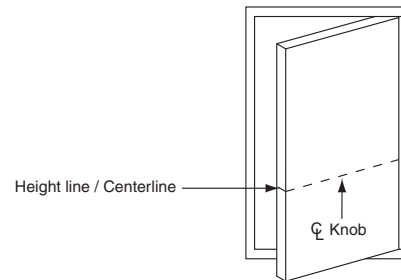
A-Series Installation Instructions



Door and Jamb Preparation

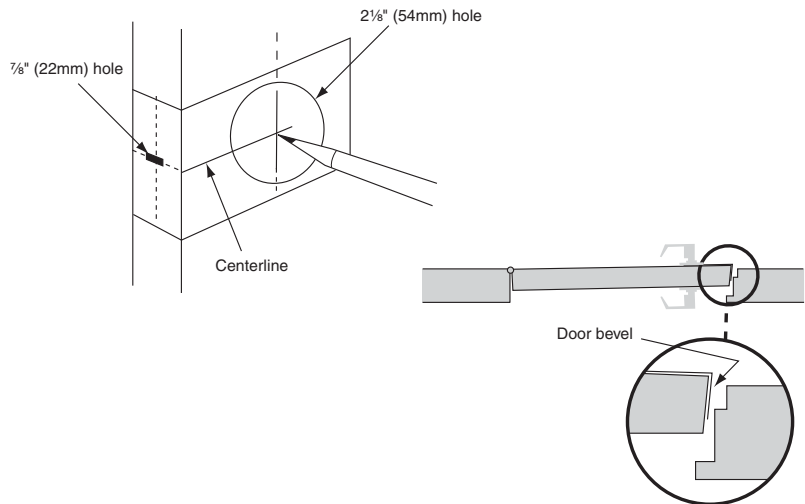
A. Mark Lockset Centerline.

- Measure desired height from finished floor.
- Mark centerline on both faces and edge of door.



B. Mark Trim Drill Points.

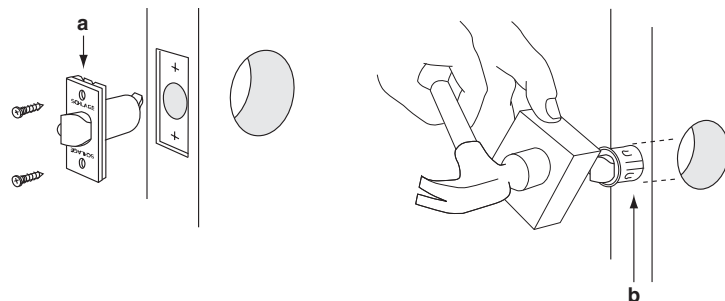
- Template should be placed on high edge of beveled door.
- Align centerline of door template with centerline marked on door edge.
- Mark door face and door edge as shown.



1

Install Latch.

- Square Corner Latch:** Beveled side of bolt should face the door jamb. Install two (2) latch screws.
- Drive-in Latch:** Place wooden block against latch and tap block with hammer until faceplate is flush with door.

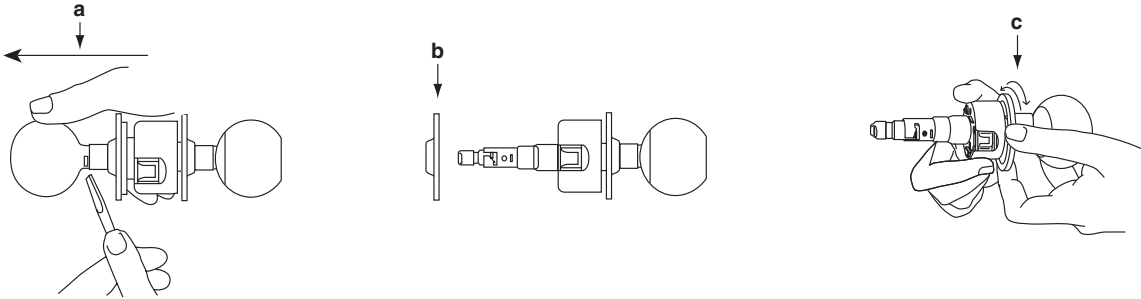


2

Prepare Outside Trim for Installation.

NOTE: DO NOT install lock with door closed.

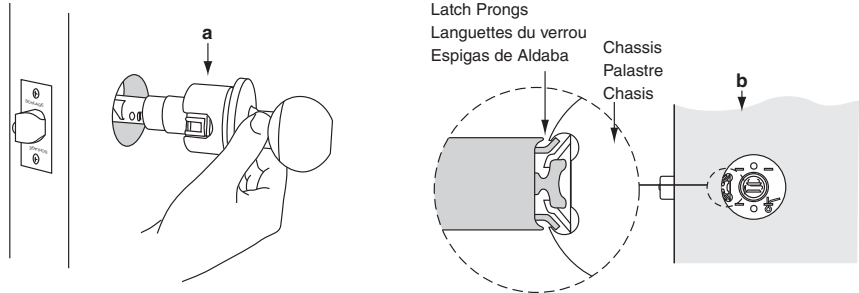
- Depress knob catch and slide off inside knob.
- Remove inside rose.
- If needed, rotate outside rose to center lock housing in door width.



3

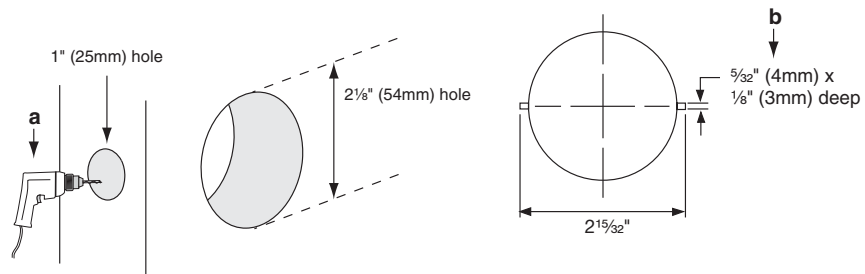
A. Install Outside Trim

- Slide chassis into door.
- Make sure latch and chassis engage as shown.



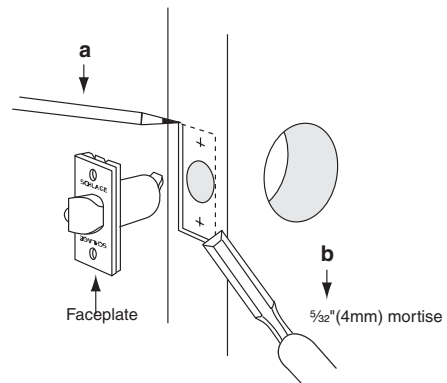
B. Drill Trim Holes.

- Drill holes from both sides of door to avoid splintering wood.
- All doors must be notched to accept anchoring pins on outside rose. Hollow metal doors must be reinforced for latch support.



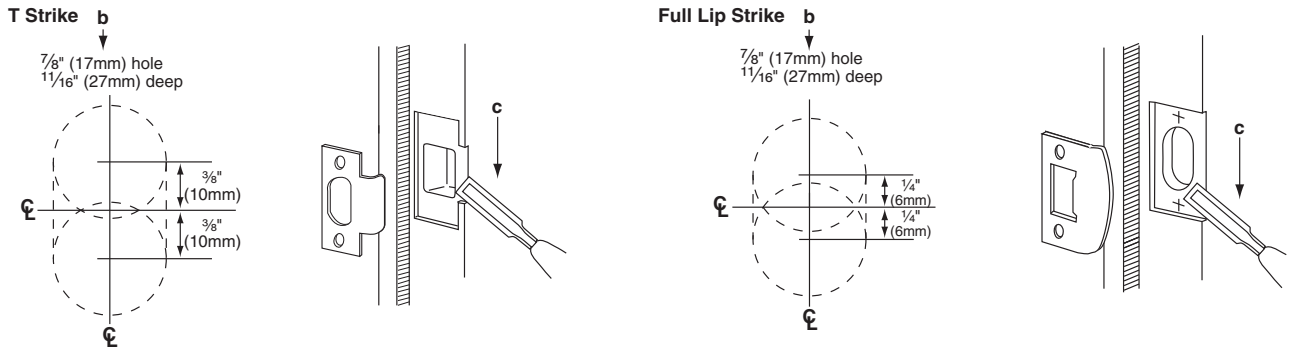
C. For Square Corner Latch ONLY.

- Use the latch faceplate as a pattern for the mortise. (Faceplate should fit flush.)
- Mortise a 5/32" (4mm) deep cutout for the latch faceplate.



D. Prepare Door Jamb.

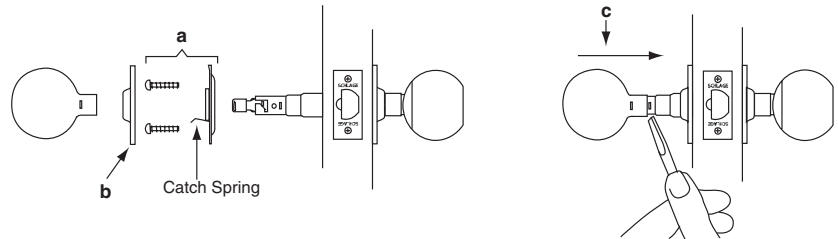
- Mark vertical line and centerline on doorjamb exactly opposite center of latch hole.
- Drill two (2) $\frac{7}{8}$ " (22mm) holes, $\frac{1}{16}$ " (17mm) deep, into doorjamb as shown.
- Mortise a cutout for the strike. Use the strike as a pattern for the mortise. (Strike should fit flush with the doorjamb.)



4

Install Inside Trim.

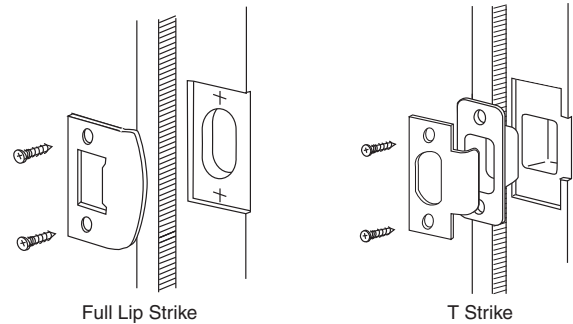
- Install mounting plate with catch spring in lower position and secure with mounting screws.
- Align notch on rose with spring and snap into place.
- Depress catch and install knob.



5

Install Strike.

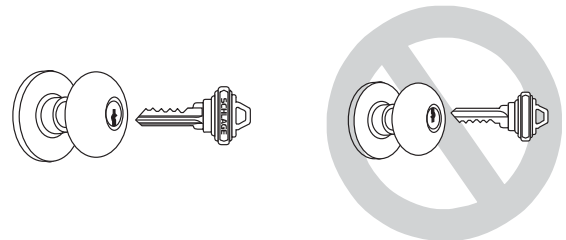
Install strike and secure with two (2) screws.



6

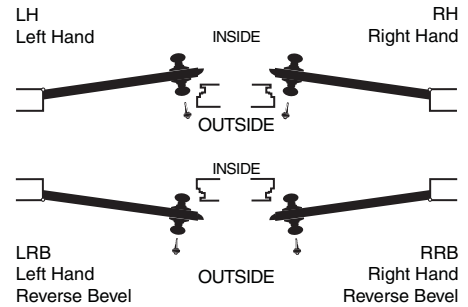
If Needed, Change Keyway Position.

- With door locked, turn key 45 degrees clockwise.
- Push in catch push pin and pull off knob.
- Interchangeable Core:** Turn control key 15 degrees and remove core.
- Turn knob over and slide back onto spindle.
- Push in knob catch.
- Turn key 45 degrees and slide knob into place.
- Interchangeable Core:** Use installation tool to turn driver 45 degrees while pushing knob into position.



Door Handing

All Schlage locks are reversible, and the correct hand should be specified for all pin tumbler locks to assure they are assembled with key cuts in the upright position. Hand information is essential to ensure proper finish of latchbolt and strike for locks for reverse bevel doors. Refer to the diagram to determine the hand of the door.



Ordering Procedure

To order Schlage products, enter data in the sequence as shown.

Line Item	Qty	Product	Outside		Inside		Hand	Latch	Strike	Dr Thk	Ext	Dim	Additional Details
			Des	Fin	Des	Fin							
1	2	3	4	5	6	7	8	9	10	11	12	13	14

- Line item number
- Quantity
- Complete lock product or part number
- Outside design code
- Outside finish code
- Inside design code (leave blank if same as outside design code)
- Inside finish code (leave blank if same as outside design code)
- Hand of door (only one hand allowed per line item, RH=right hand, LH=left hand, RR=right reverse, LR=left reverse)
- Latch (leave blank for standard or specify part number if non-standard latch is required (LLL=less latch))
- Strike (leave blank for standard or specify part number if non-standard strike is required (LLL=less strike))
- Door thickness, enter door thickness if non-standard 138=1³/₈", 214=2¹/₄", 212=2¹/₂"
- Extension, enter one of the following for doors greater than 2" thick: EE=extended equally, EI=extended inside, EO=extended outside, ED=extended differently (EI or EO assumes the latch will be centered on a 1³/₄" thick door to which material has been added)
- Dimension, enter dimension for non-standard strike lip length and mortise cylinder or blocking ring length:

012 = 1 ⁸ / ₈ "	037 = 3 ⁸ / ₈ "	118 = 1 ¹ / ₈ "	158 = 1 ⁵ / ₈ "
018 = 3 ¹ / ₁₆ "	050 = 1 ² / ₂ "	114 = 1 ¹ / ₄ "	134 = 1 ³ / ₄ "
025 = 1 ⁴ / ₄ "	078 = 7 ⁸ / ₈ "	136 = 1 ³ / ₈ "	200 = 2"
031 = 5 ¹ / ₁₆ "	100 = 1"	112 = 1 ¹ / ₂ "	400 = 4"
- Enter detail for keying information and for special requirements

Ordering Example: One A-Series Entrance Lock, Orbit knob in US3 with Primus Level 1 cylinder, CP keyway, 00-bitted, no keys.

Line Item	Qty	Product	Outside		Inside		Hand	Latch	Strike	Dr Thk	Ext	Dim	Additional Details
			Des	Fin	Des	Fin							
1	1	A53LD	ORB	605									
2	1	20-724		606								122	Primus #000367, CP-000000, LKB



Ingersoll Rand's Security Technologies Sector is a leading global provider of products and services that make environments safe, secure and productive. The Sector's market-leading products include electronic and biometric access control systems; time and attendance and personnel scheduling systems; mechanical locks and portable security, door closers and exit devices, steel doors and frames, architectural hardware and technologies and services for global security markets.

800.847.1864

www.schlage.com www.ingersollrand.com