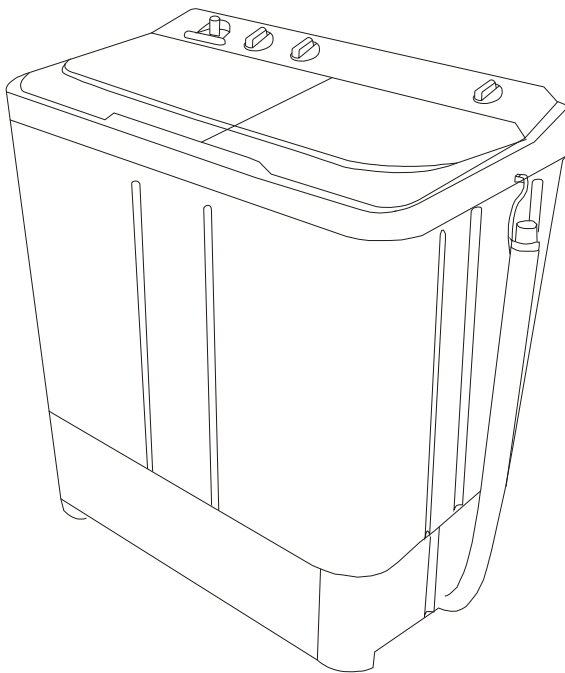


Haier

Twin-tub washing machine

SERVICE MANUAL



Model: HWM65-187S

- Features
- Full plastic cabinet
- Choose water current and washing time
- Choose spinning time
- Sperate washing and spinning
- Full plastic washing tub and spinning tub

1.Contents..... 1

2. Features 2

3. Specifications..... 3

4. Safety precautions 4

5. Warning and cautions 5

6. Net dimension 6

7. Installation and accessory parts..... 7

8. Parts and functions..... 10

9. Maintenance service and trouble shooting..... 11

10. Wiring diagram15

- Features
- Full plastic cabinet
- Choose water current and washing time
- Choose spinning time
- Sperate washing and spinning
- Full plastic washing tub and spinning tub

Model		HWM65-187S
Free standing		✓
Built under		*
EAN code		6901570062136
Energy efficiency class		—
Features for use		
Wash capacity	kg	4.0
Spin capacity	kg	3.5
Level/Volume	L	Max/33.5 Med/27 Min/22.5
Preset	H	*
Residual dampness	%	<115
Control model		timer
controller		*
Normal computerized		*
Fuzzy computerized		*
Frequency conversion		*
Service features		
Programs		2
Short cycle		*
Inlet heating select		×
Heating selection		*
Spinning cycle (selector)		*
Spinning cycle (variable)		*
Start/Pause		*
Automatic balancing		*
Aesthetics		Full plastic twin-tub integrated with cabinet
Cabinet material (P=Plastic/Z=Zincking/C=Cold)		P
Rolled stainless steel		*
Inner drum(stainless steel=s/plastic=p)		P
Drain type		down
Door (glass=g / plastic=p)		*
Adjustable feet		*
Technical data		
Voltage/frequency	V/Hz	220/50
Energy consumption	kWh	0.191
Water consumption	L/kg	25.3
Wash power	W	300
Spin power	W	135
Special function		*
Air-Bubble		*
Feet wheel		*
Water fall current		*
Dimensions (measurements)		
Height / built under	mm	858
Width	mm	690
Depth / with open door	mm	376
Dimensions packed (measurements packed)		
Height	mm	890
Width	mm	722
Depth	mm	422
Net weight	kg	About 16.5
Gross weight	kg	About 20.5
20'Container load	Sets	80
40'Container load	Sets	168
40H'Container load	Sets	262
NOTE: "✓" FOR AVAILABLE, "×" FOR NOT AVAILABLE "—" FOR NOT APPLICABLE		

Please insert the power cord into special receptacle with rated voltage. Be sure to use single-phase two pins receptacle. The earthing terminal must be earthed reliably. If possible, please adopt electric leakage protector.



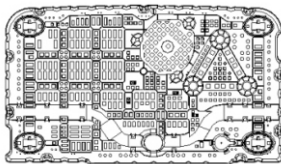
When the machine is normally using, please put the power plug at the location easily to be inserted and extracted by hand. Be sure to pull the plug off when there's power failure, or the machine is being moved, cleaned or when it is idle.



If the power cord is bad, to avoid risk it is required to replace. Keep the pin of the power plug clean.



In case the washing machine is installed on ground with carpet, do not block the ventilation hole with carpet.



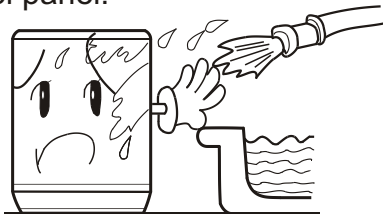
Ventilation hole at the bottom of the washing machine



Do not use water hotter than 50°C .



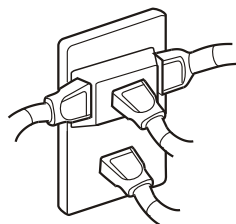
Do not put the machine at damp place like the bathroom . Never wash it with water. Do not place wet laundries on the control panel.



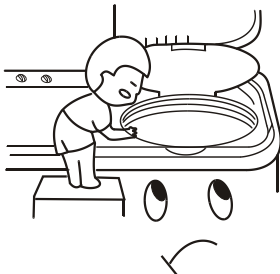
Do not wash water-proof laundries such as the raincoat, bicycle shelter etc. To avoid abnormal vibration during spinning.



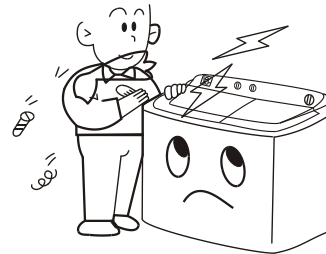
Do not share one receptacle with other electric appliances. Do not use it in case that the power plug is damaged or the inserting into the receptacle is loose.



Do not stretch hands into the working machine. It is dangerous even if the rotation is slow. Take special care of the children.



Do not decompose, repair or alter the machine by yourself.



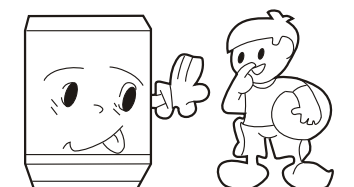
Do not put any hot or heavy items (such as the kettle with hot water) on the washing machine.



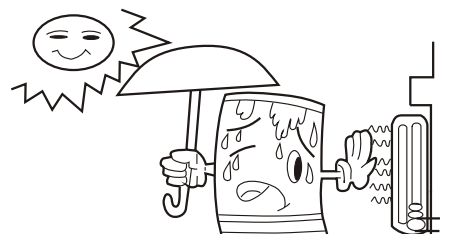
Do not wash laundries with volatile materials (such as thinner, petrol etc.).

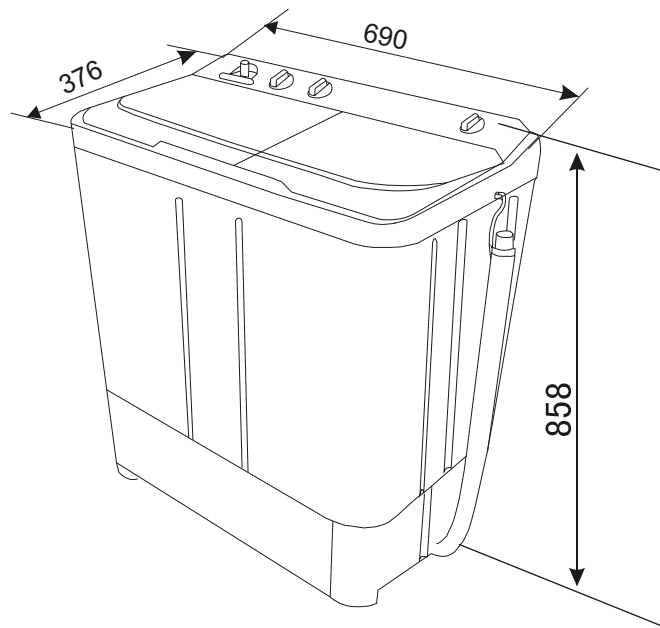


Handicapped or children without care shall not use the machine.



Keep the machine away from direct sunlight and heat source like the heater.





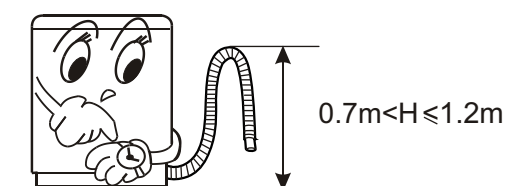
Unit (mm)

Figure 1

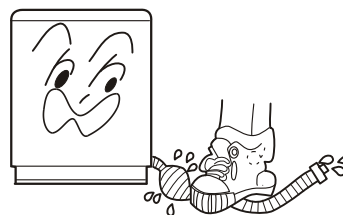
INSTALLATION AND ACCESSORY PARTS

The drainage shall be smooth with the drain hose.

1.put the drain hose up to suitable position. .



2.Do not step on or press the drain hose.



Notes: the highest point of drain pipe should be higher than the water level of washing tub for avoiding to siphon phenomenon during drain.

- Figure 1 indicates the ex factory installation position of the drain hose.

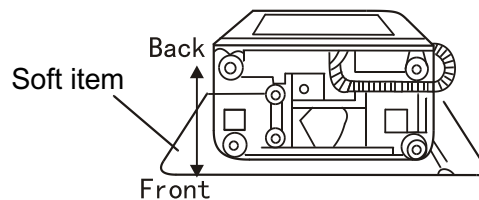


Figure 1

Extend the drain hose from the side of spin tub.

Put soft items on the ground. Lean the machine down gently with the front surface facing the ground. Take off the drain hose from the cabinet. Take the hose out of the fixing groove. (See to Figure 3).

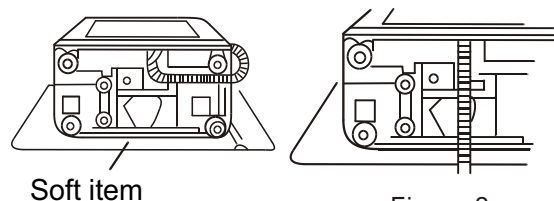
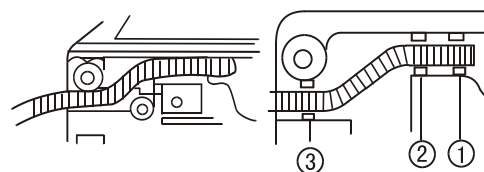


Figure 2

Embed the drain hose into the groove along the side of the spin tub in the order of (1)~(3), heading for the side of the spin tub. (See to Figure 3).

Embed the drain hose into the groove with hands. Take care not to damage the drain hose in fastening the fixing clamp.



Extend to the spin tub side

Figure 3

Embed into the groove in turn

Points of Attention in After-sales Service

- Be sure to switch off the power during dismantling or repair.
- Be sure to use insulated wiring terminals and insulation box in connection of the wires, and crimp and fix to proper position with suitable tools.
- In welding connections with electric iron, be sure to twist the wires before welding, and insulate with insulation tapes.
- In welding the wires with electric iron, be sure not to touch the resin part and insulation part of each switch.
- The inlay connection wires and terminals shall not be loose or drop.
- Do not make the wires touch the moving parts like the belt, pulley of the motor, brake bar etc. Do not make the wires touch the sharp edges and high-temperature area.
- In case that there are metal parts with the wires, do not make the wires touch the metal parts. Insulation materials are needed between them.
- After assembly, the washing machine shall act normally. Check if it leaks and if the sound and vibration are normal.

Dismantling and installation of the control panel component

Loosen the fastening screws. Pull towards the direction indicated in the figure to dismantle the control panel. In installation the beard shall lock into the installation hole of the major frame. (Figure 6)

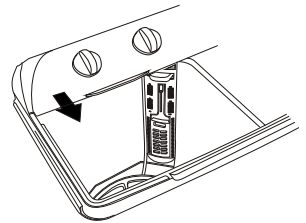


Figure 6

Dismantling and installation of the spin tub frame component

Push the points marked with "※" as indicated in the figure and pull the spin tub frame towards upper left direction to dismantle the spin tub frame components. In installation, after set the rear side of the spin tub frame to proper position, push the four points marked with "※" downwards by force to resume its original position. (Figure 7)

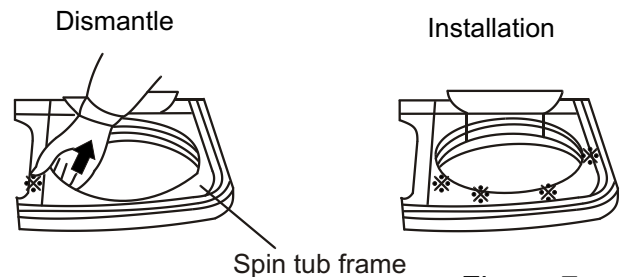


Figure 7

Dismantling and installation of the spin tub

Dismantle the spin tub frame component. Loosen the fastening screw of the spin tub shaft. The spin tub then can be taken out. In installation, be sure to inlay the bulge of the inner lining of the brake wheel into the groove of the spin tub shaft. (Figure 8)

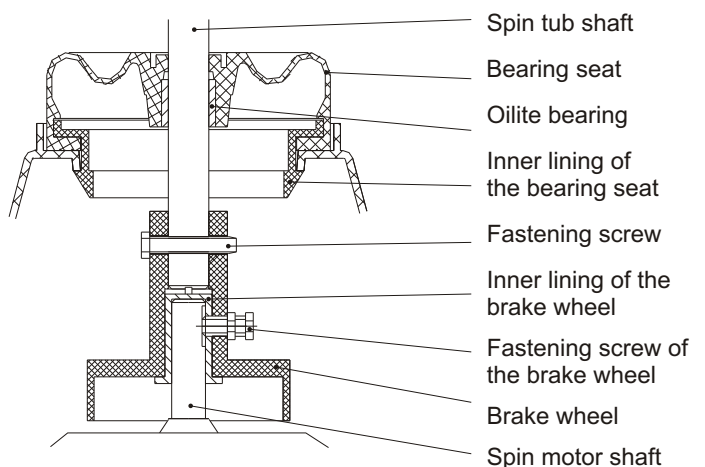


Figure 8

Dismantling and installation of the base frame

Dismantle the back cover. Loosen the wires. Loosen the fastening screw of the spin tub shaft. Separate the shaft from the brake wheel. Loosen the brake hook. Take off the brake cable frame from the installation groove of the twin-tub. Take off the V-belt. Take out the drain hose from the groove of the base frame. Loosen the fastening screw between the base frame and the cabinet to dismantle the base frame component.

Dismantling and installation of the bearing seat

Once the bearing seat is taken off, it can not be utilized again. Therefore do not dismantle it as far as possible. In case that it has to be replaced, please dismantle it as per following

sequence, then install a new bearing seat.

- Dismantle the spin tub . Then pull out the bearing seat.
- Cut off the inner lining claw inside the bearing seat with cutting pliers and take it out.
- Install the new bearing seat and inner lining.

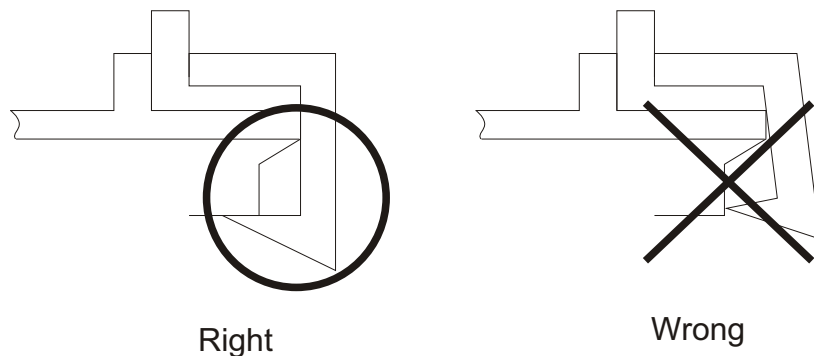


Figure 9

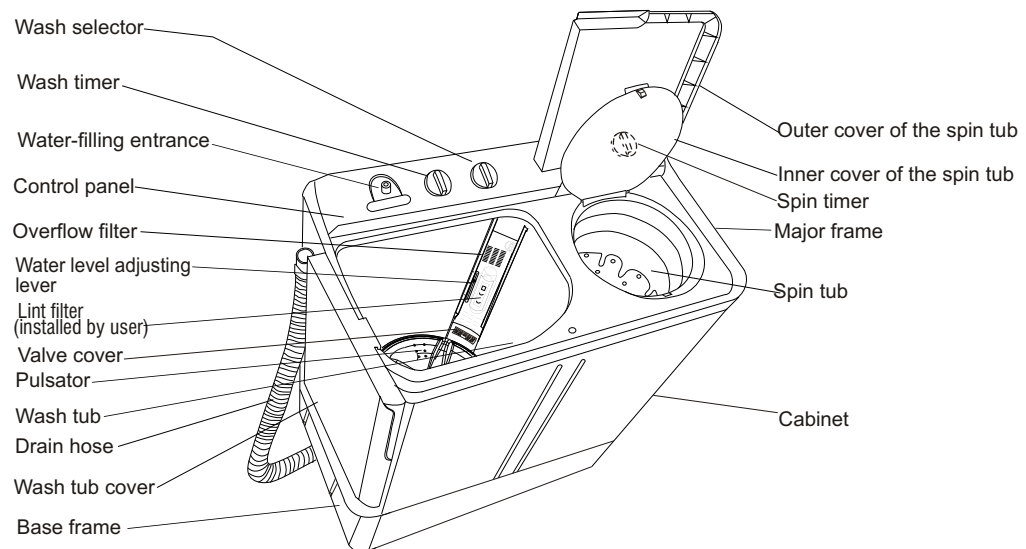
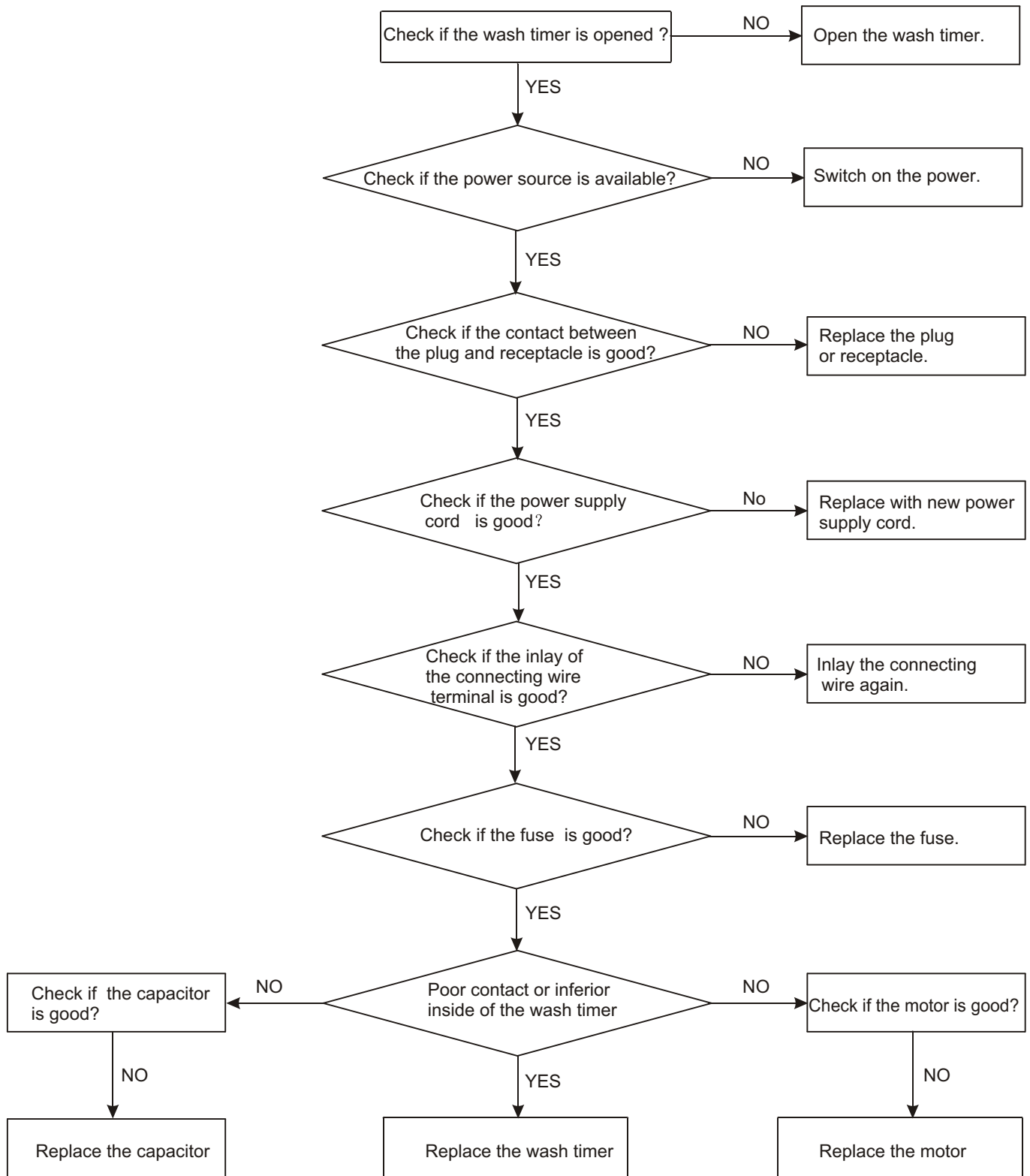


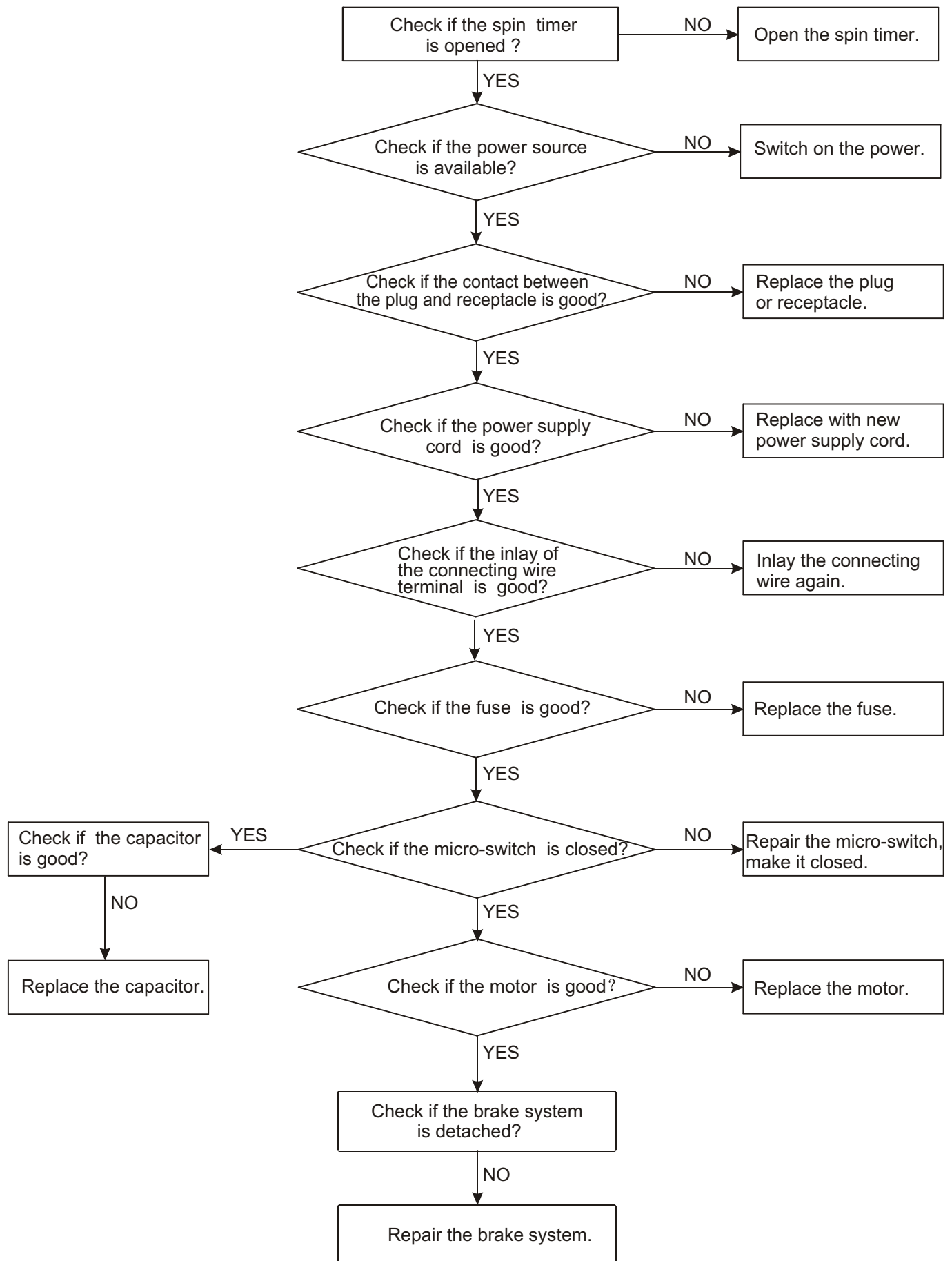
Figure 10

Insert the power plug , but the machine does not work

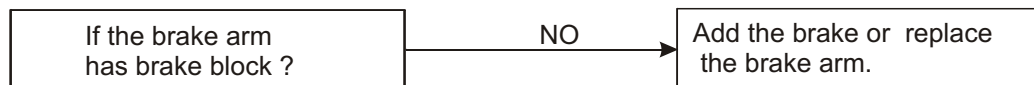
Wash part



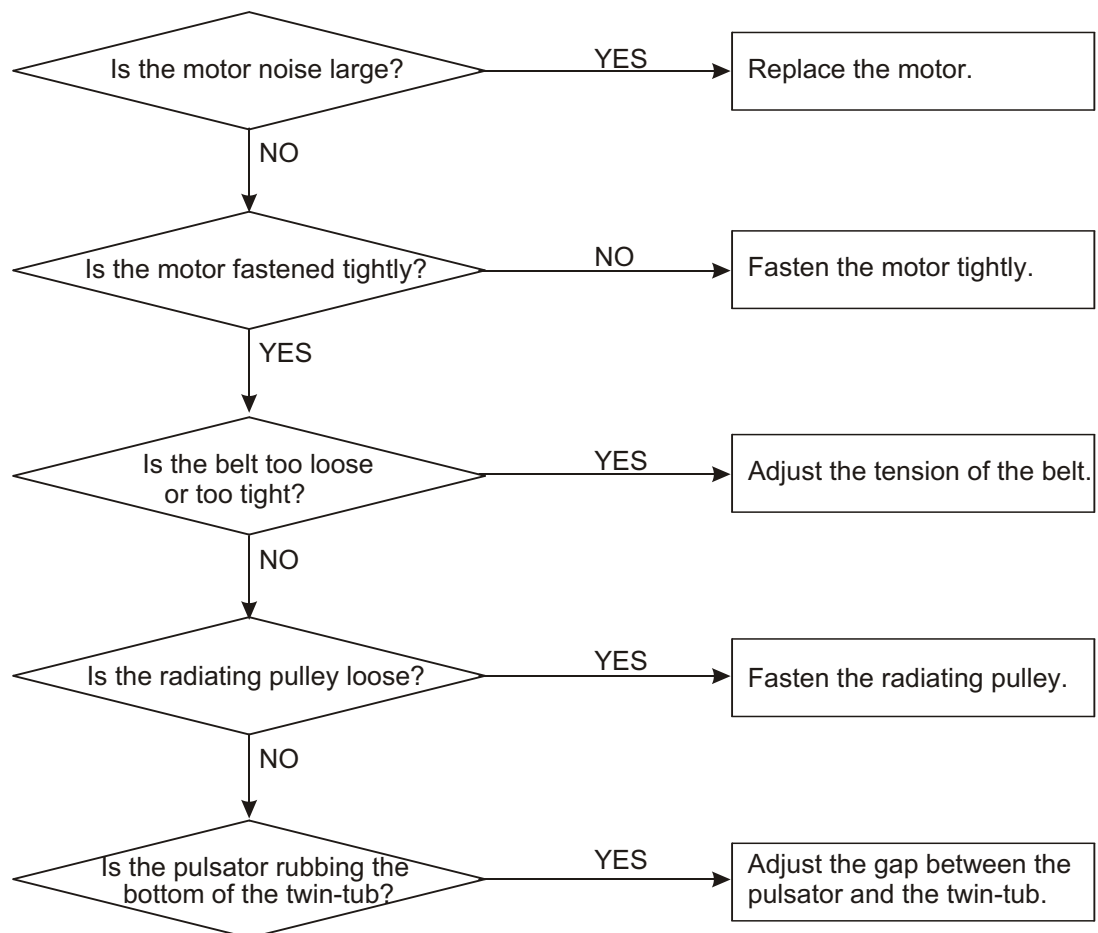
Spin part



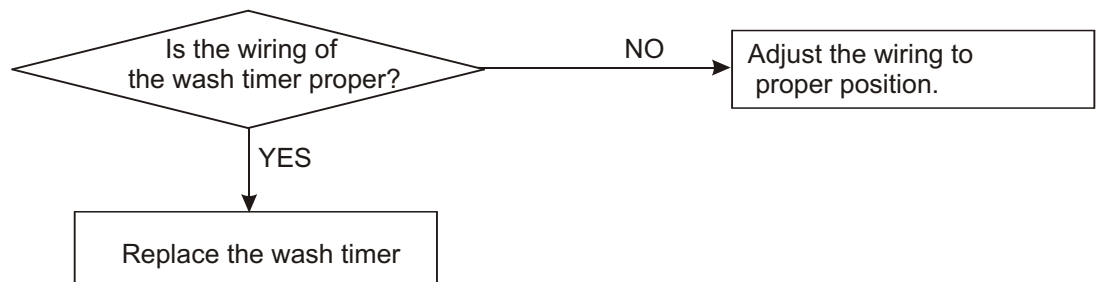
There is metal rubbing noise in braking



The washing noise is too large



8.4 The pulsator only rotates towards one direction



(If there's breakdown, please pull off the power plug before checking) The following phenomena are not breakdowns sometimes. Please confirm again before it to repair.

Phenomena	The reason	
The machine does not act.	<ul style="list-style-type: none"> • Is there power failure? • Is the power plug loose? • Is the pulsator twisted by foreign materials? 	<ul style="list-style-type: none"> • Use it when the power is on. • Insert the power plug tightly. • Remove the foreign materials?
The draining does not work	<ul style="list-style-type: none"> • Is the drain hose put down? • Is the drain hose blocked by foreign material? • Are there laundries falling to the outer side of the spin tub? 	<ul style="list-style-type: none"> • Put down the drain hose? • Remove the foreign material? • Please contact the after-sales service department.
There's abnormal sound during washing	<ul style="list-style-type: none"> • Are there hair pin, coins or metal items brought inside the tub? 	<ul style="list-style-type: none"> • Remove the hair pin, coins or metal items
There's abnormal sound and violent vibration during spinning	<ul style="list-style-type: none"> • Is the machine slanting? • Is the gland pressed evenly? • Are there laundries falling to the outer side of the spin tub? • Are the laundries in spin tub too much? 	<ul style="list-style-type: none"> • Level the machine properly. • Pressed the gland evenly • Remove the laundries • Remove a little laundries

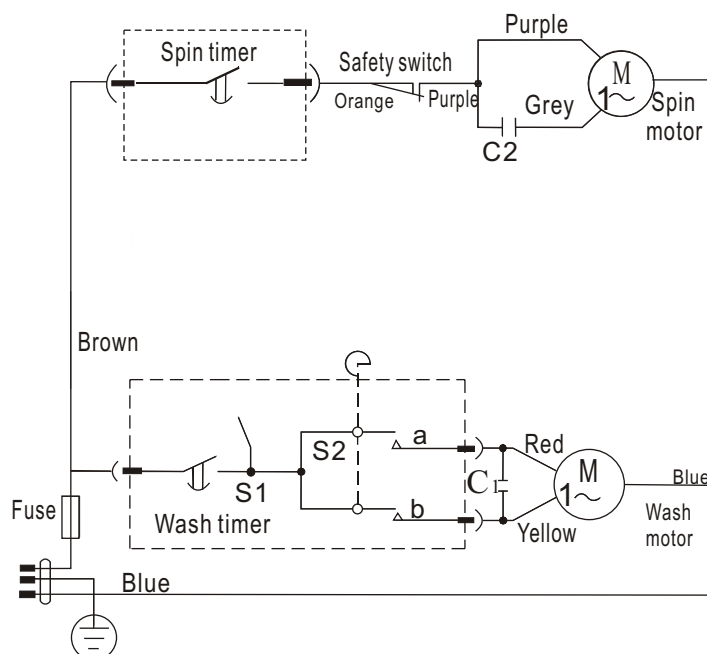


Figure 12

- There is overload protector installed in the motor. In case that the motor is overload or meets breakdown in working, the protector will act and stop the motor. When the breakdown is removed, the motor will resume normal working.
- Actual Circuit Diagram

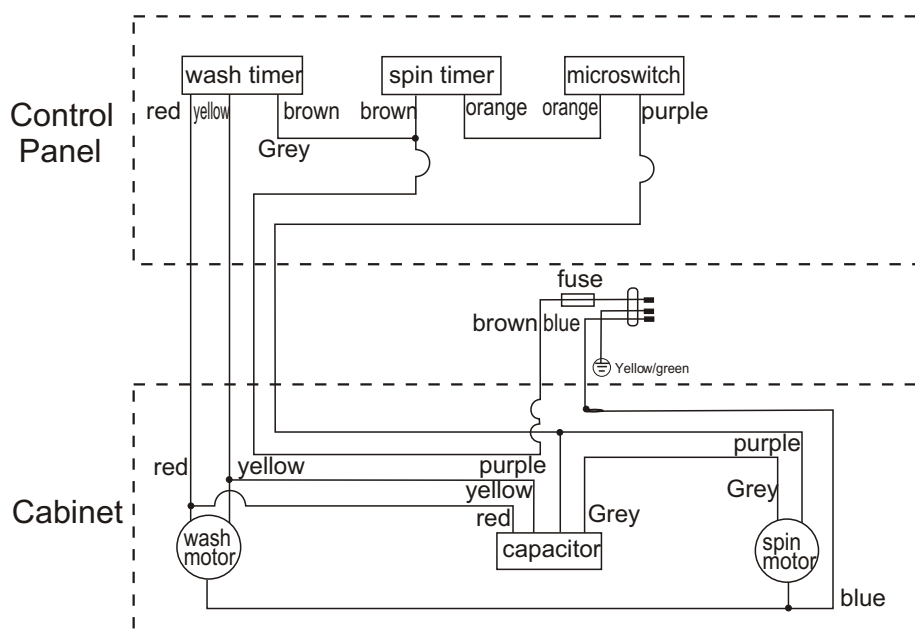


Figure13

Sincere Forever

Haier Group

**Haier Industrial Park, No.1, Haier Road
266101, Qingdao, China
<http://www.haier.com>**