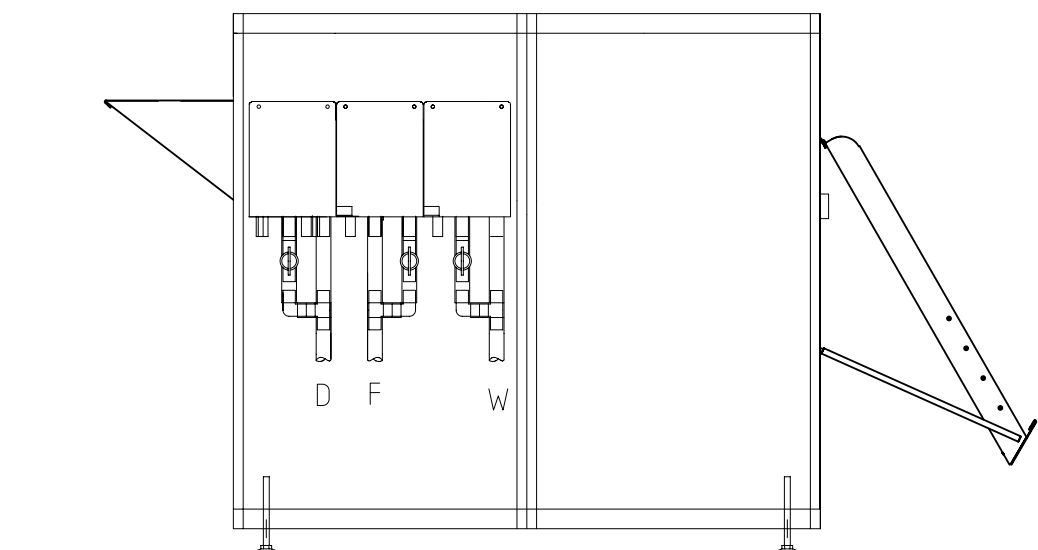


Service and Maintenance Manual English

Warning: For the use of qualified Service Personnel only

Important

Your on-line processor has a built in exhaust blower. If the main switch is switched off, the blower is disconnected and chemical fumes can damage conveyor/imagesetter. Use the built in timer to control on/off/night mode of the processor to ensure that the exhaust blower is always running.



**Hope / Carnfeldt EG 751 PCB
Hope / Carnfeldt EG 901 PCB**

8.1 General

This section contains the processor's basic operating instructions for working on/off-line.

Before operating the processor on-line, the procedures in section three Installation must be performed. Read this entire section and section four (Operation) before attempting to operate the processor.

Contents

8.1 General..... 89

8.2 Off-Line Processing 91

8.3 Rack Drawings Off-Line..... 92

Dev /Fix /Wash Rack 36"unitr.1 Wet X R44, Drawing 5986 Unitrack 92

Rack Side Left R1 W.Gears Uni., Drawing 155515 92

Rack Side Right R1 W.Gears Uni, Drawing 155525 94

Dry Rack R60 HTD Drive EG 901, Drawing 315409a 96

Dry Rack R60 HTD Drive EG 901, Drawing 315409b..... 96

Sparepart drawings 98

Installationview 6339..... 101

Installationview 6340..... 102

Interconnection diagram 6356 103

Block diagram EG Mrk 4 6369 104

Technical Specifications 105

Edition: 25 nov. 2010

Product numbers:

315815/315821

320820/320821

8.2 Off-Line Processing

When using your Hope/Carnfeldt processor as off-line processor please observe the following symbols on the panel:



Ready for off-line feed



Off-line feed. (A film is under the inlet sensor).

For setting up the processor in general please revert to section 4.9 Panel Operations.

Using the Processor Off-Line

When inserting film please ensure that the film is centred. An arrow indicates the centre of the processor. See fig.



Using the Receiving Table

The angle of the receiving table can be adjusted the fit different film types. Correct adjustment will ensure the that the films are stacked properly.

Stop input on alarm

The Software can be adjusted so that the processor will not process any films if an alarm is active and Celis is unhappy

Here is a description how to activate the STOP INPUT ON ALARM function.:

Enter the service mode, see service manual paragraph 5.7 page 5-55

Press the key “MACH SETUP”

Press arrow key to left until you have “STOP INPUT ON ALARM” in the display

Use the arrow up key to enable the function.

Press the “out of door “key (lower left key)

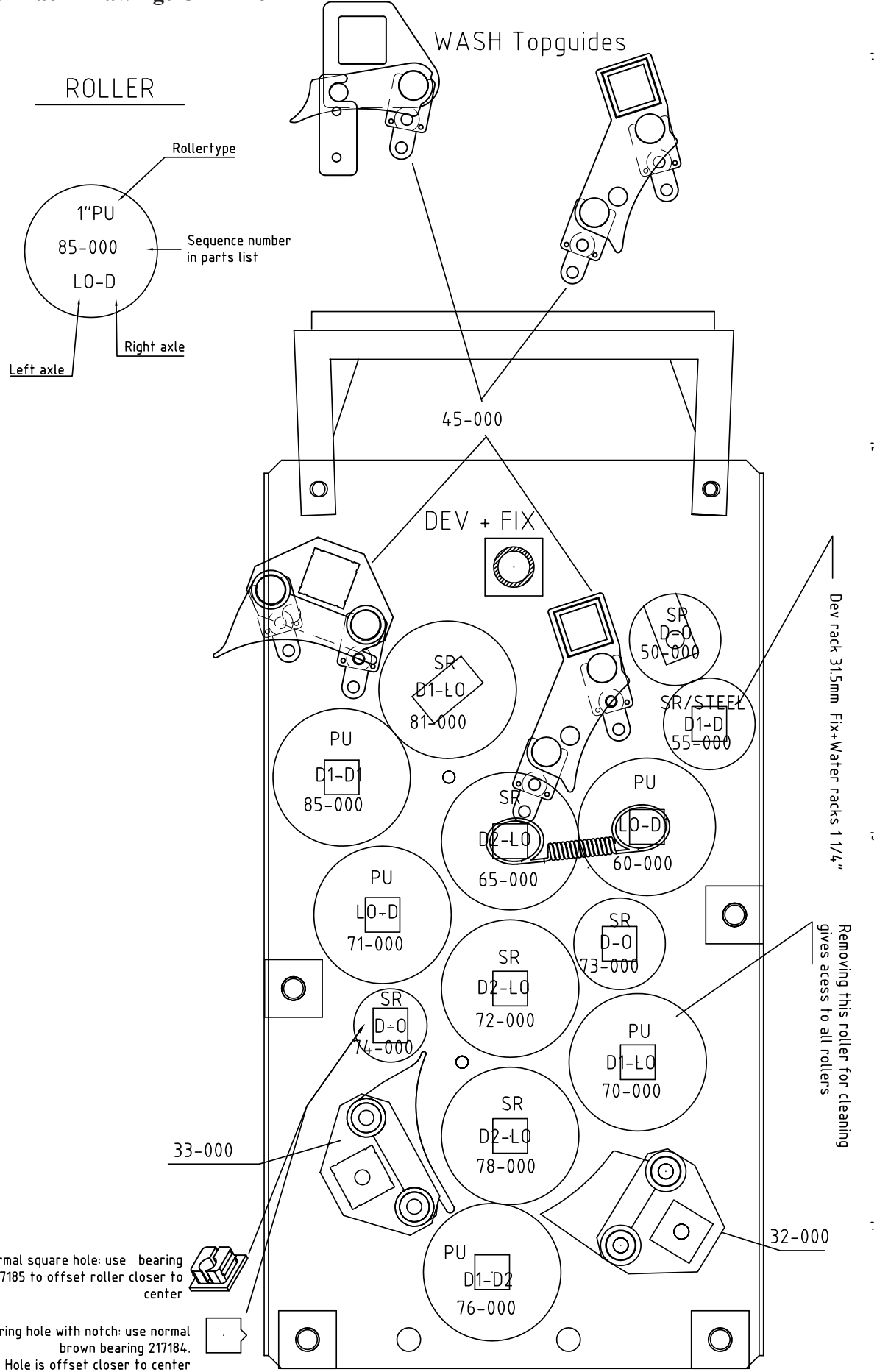
Press “OUT+RESET” (lower left key)

Now the motor will stop if a film is detected at the input sensor, and there is an alarm (unhappy)



SECTION EIGHT: Off-Line Description Eastman Kodak Models

8.3 Rack Drawings Off-Line



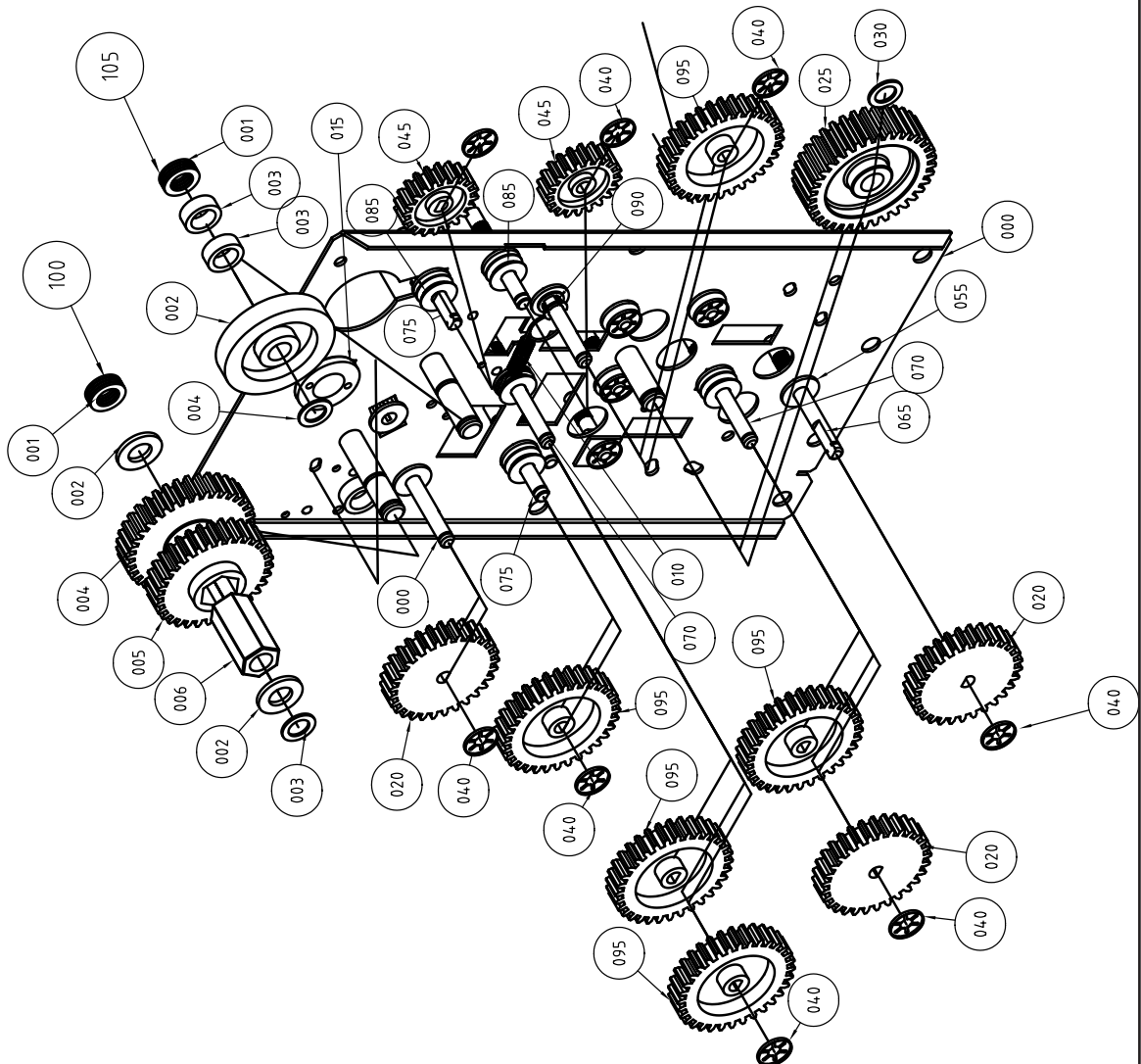
SECTION 8

Dev Rack 36" unitr.1 Wet X R44, Drawing 5986 Unitrack

SECTION EIGHT: Off-Line Description Eastman Kodak Models

Parts List

Pos.	Dwg/part nr. x	Title	Pcs.
000	155742	Rackside left unitrack R1 -94	1
005	217185	Bearing $\phi 1/4"$ 12x12mm offset	1
010	217336	Spring f 1 7/8" roller $\phi 6 \times 50 \times 1$	1
015	233424	Bearing $\phi 14,2$ f.20 x 20 hole	1
020	65266	Gearwheel 30-T 1/4 In - D	3
025	65283	Gearwheel 36-T $\phi 10,2$ MM	1
030	88246	Lock Disc 15x9,5x1MM	1
035	913844	Guide fork for $\phi 10$ white	4
040	117337	Starlock 1/4" stainless	12
045	117538	20T D-Hole Gearwheel	2
050	217007	$\phi 11/16 \times 6$ Plastic spacer	1
055	217184	Bearing $\phi 1/4"$ 12x12 mm -Brown	12
060	276074	Axle-D, Long F.1 Gear Wheel	2
065	235234	Axle-D 1/4 IN, Long f. 1.G.W	1
070	276084	Axle-D, Long F.2 Gear Wheel	2
075	276044	Axle-D	3
080	276034	Axle- ϕ	5
085	65274	Pulley 1/4" - ϕ	5
090	65281	Bearings 1/4In ϕ .	1
095	117528	Gear wheel 32-T NV 16	5
100	32-36-HEX		1
001	65557	Disc 10 $\phi \times 16 \times 1$ Nylon	4
002	88216	Flatwasher 10x21x2mm A4 D.125	2
003	88246	Lock Disc 15x9,5x1MM	1
004	117518	36T Gearwheel NV16	1
005	117528	Gear wheel 32-T NV 16	1
006	275154	Connector NV 16	1
105	SUB 54266		1
001	65557	Disc 10 $\phi \times 16 \times 1$ Nylon	4
002	54266	Gearwheel 30-T $\phi 10$ f.cotterP	1
003	217007	$\phi 11/16 \times 6$ Plastic spacer	2
004	88246	Lock Disc 15x9,5x1MM	1

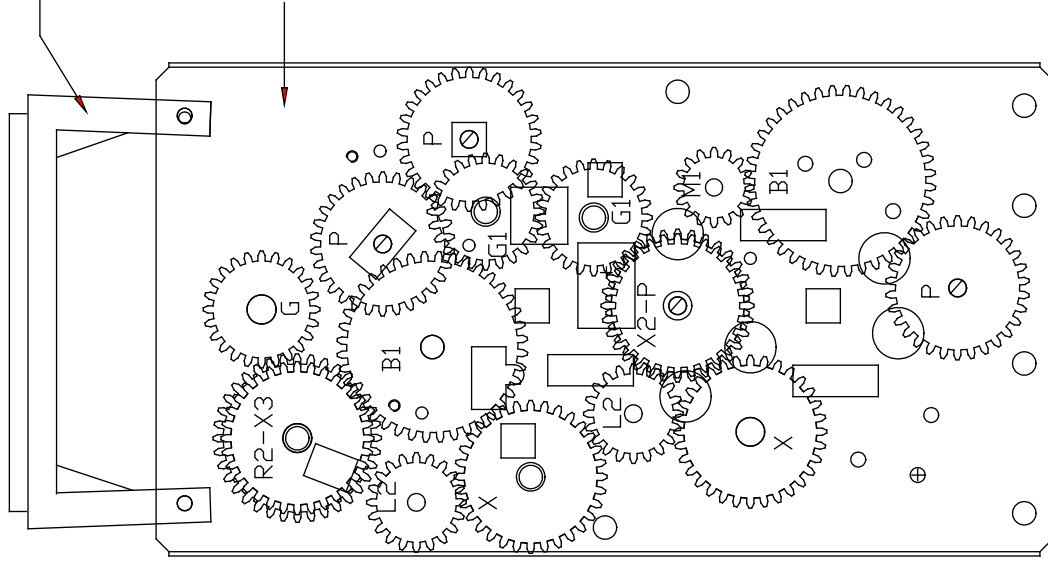


Rack Side Left R1 W.Gears Uni., Drawing 155515

SECTION EIGHT: Off-Line Description Eastman Kodak Models

1 pcs handle
 28" 65535
 36" 233054
 54" 233054
 65" 217044

1 pcs Rackside, right
 155752

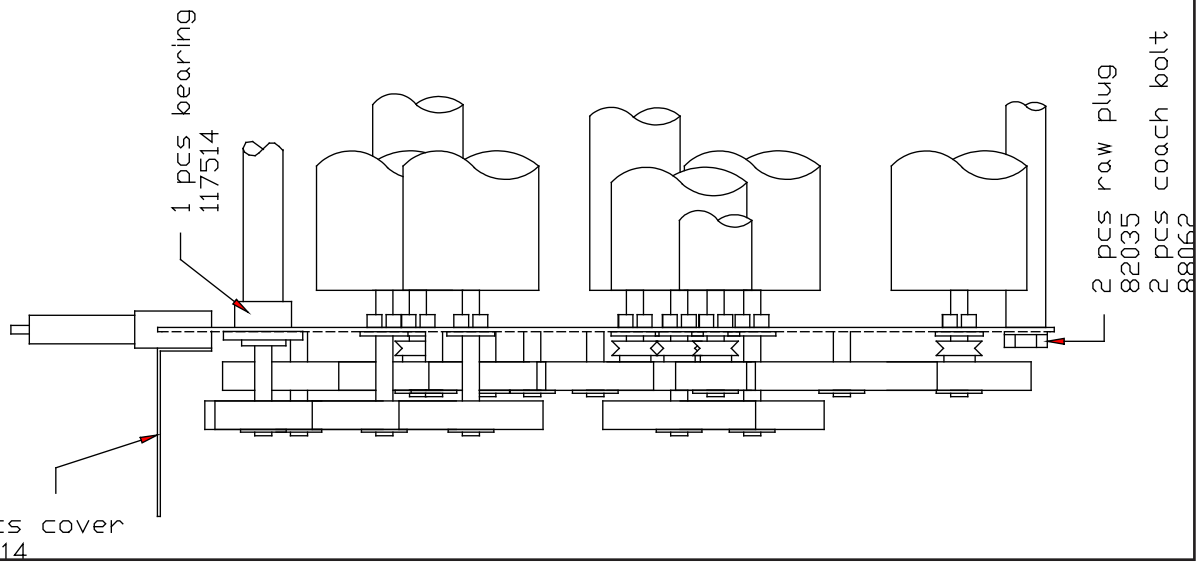


GEARWHEELS GREY

G1	GEARWHEEL	24T	Ø10,2	MSH	68806
R2	GEARWHEEL	36T	HX		117518
X3	GEARWHEEL	32T	HX		117528
P	GEARWHEEL	30T	D 1/4"		68804
L2	GEARWHEEL	20T	D		68803
B1	GEARWHEEL	40T	Ø10		68805
X	GEARWHEEL	32T	Ø10		217434
X2	GEARWHEEL	32T	D 1/4"		207404
M1	GEARWHEEL	16T	D 1/4" W. LOCK		217374

GEARWHEELS BLACK

G1	GEARWHEEL	24T	Ø10,2	MSH	217164
R2	GEARWHEEL	36T	HX		117518
X3	GEARWHEEL	32T	HX		117528
P	GEARWHEEL	30T	D 1/4"		65266
L2	GEARWHEEL	20T	D		117538
B1	GEARWHEEL	40T	Ø10		65981
X	GEARWHEEL	32T	Ø10		65993
X2	GEARWHEEL	32T	D 1/4"		117548
M1	GEARWHEEL	16T	D 1/4" W. LOCK		65270



1 pcs cover
 17514

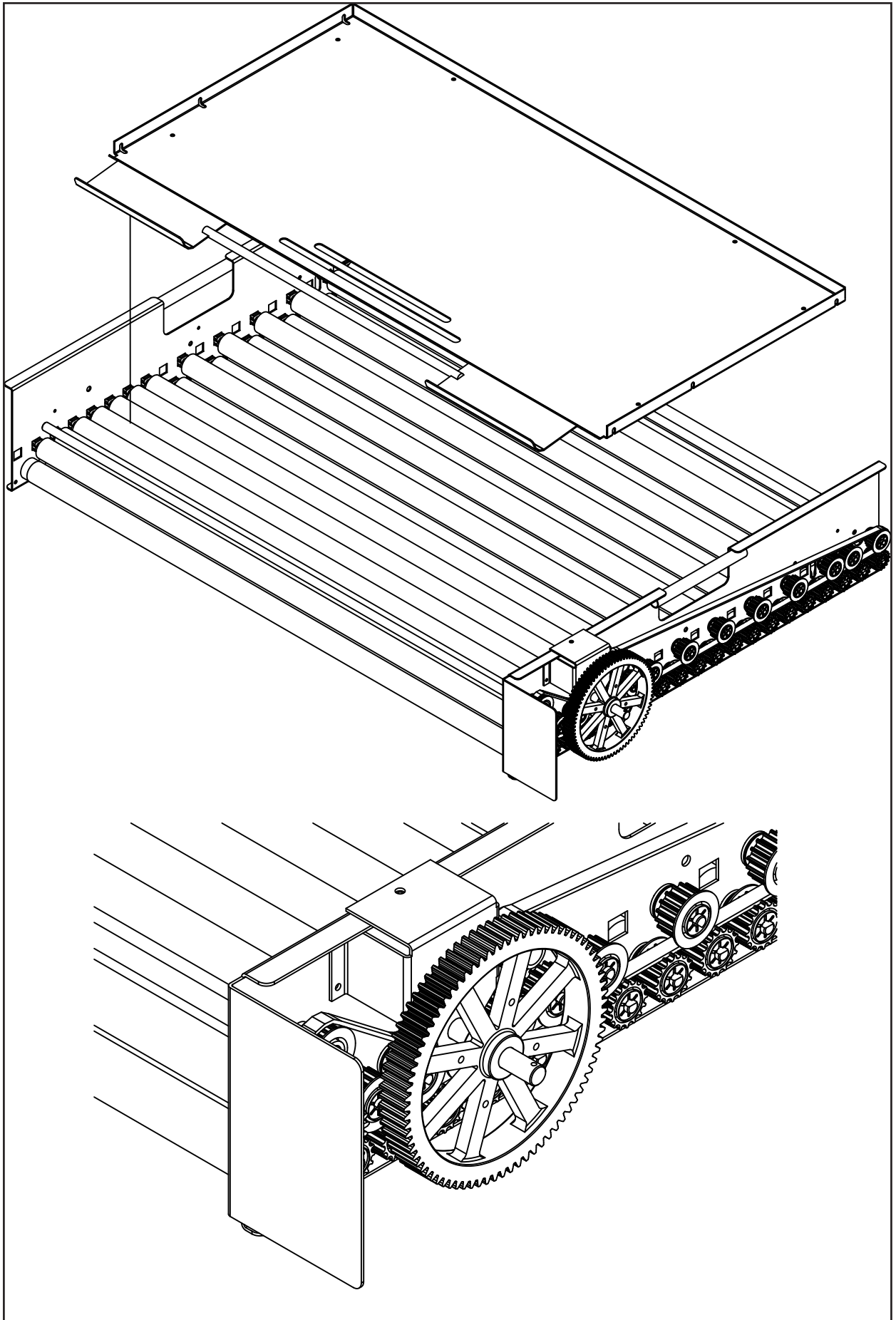
1 pcs bearing
 117514

2 pcs raw plug
 82035
 2 pcs coach bolt
 88062

SECTION 8

Rack Side Right R1 W.Gears Uni, Drawing 155525

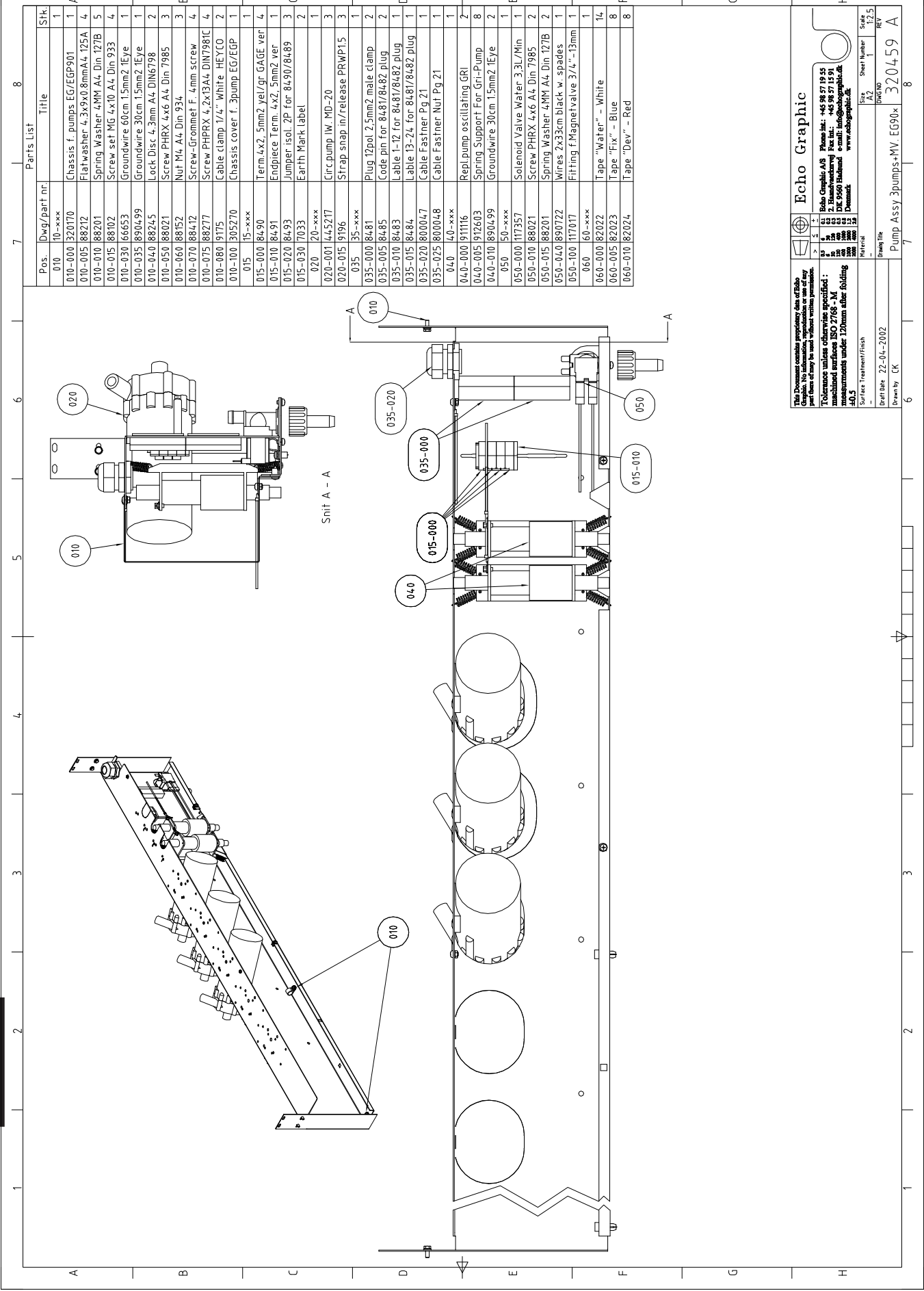
Empty page



Dry Rack R60 HTD Drive EG 901, Drawing 315409b

SECTION 8

SECTION EIGHT: Off-Line Description Eastman Kodak Models



Pos.	Dwg/part nr.	Title	Stk.
010	10-xxx		1
010-000	320170	Chassis f. pumps EG/EGP901	1
010-005	88272	Flatwasher 4, 3x90.8mmA4, 125A	4
010-010	88201	Spring Washer 4MM A4, Din 127B	5
010-015	88102	Screw set MG 4x10 A4, Din 933	4
010-030	66653	Groundwire 60cm 1.5mm ² 1Eye	1
010-035	890499	Groundwire 30cm 1.5mm ² 1Eye	1
010-040	88245	Lock Disc 4.3mm A4, DIN6798	2
010-050	88021	Screw PHRX 4x6 A4, Din 7985	3
010-060	88152	Nut M4, A4, Din 934	3
010-070	88412	Screw-Grommet F, 4mm screw	4
010-075	88277	Screw PHRRX 4, 2x13A4, DIN7981C	4
010-080	9175	Cable clamp 1/4" White, HEYCO	2
010-100	305270	Chassis cover f. 3pump EG/EGP	1
015	15-xxx		1
015-000	8490	Term. 4x2, 5mm ² yel/gr. GAGE ver	4
015-010	8491	Endpiece Term. 4x2, 5mm ² ver	1
015-020	8493	Jumper isol. 2P for 84.90/84.89	3
015-030	7033	Earth Mark label	2
020	20-xxx		1
020-001	445217	Circ.pump IW, MD-20	3
020-015	9196	Strap snap in/release PRWP15	3
035	35-xxx		1
035-000	8481	Plug 12pol 2.5mm ² male clamp	2
035-005	8485	Code pin for 84.81/84.82 plug	2
035-010	8483	Label 1-12 for 84.81/84.82 plug	1
035-015	8484	Label 13-24 for 84.81/84.82 plug	1
035-020	800047	Cable Fastener Pg 21	1
035-025	800048	Cable Fastener Nuf Pg 21	1
040	40-xxx		1
040-000	91116	Repl.pump oscillating GRI	2
040-005	912603	Spring Support For Gri-Pump	8
040-010	890499	Groundwire 30cm 1.5mm ² 1Eye	2
050	50-xxx		1
050-000	117357	Solenoid Valve Water 3/4"/Min	1
050-010	88021	Screw PHRX 4x6 A4, Din 7985	2
050-015	88201	Spring Washer 4MM A4, Din 127B	2
050-040	890172	Wires 2x33cm black w. spades	1
050-100	117017	Fitting f. Magnet Valve 3/4" - 13mm	1
060	60-xxx		1
060-000	82022	Tape "Water" - White	14
060-005	82023	Tape "Fix" - Blue	8
060-010	82024	Tape "Dev" - Red	8

This Document contains proprietary data of Echo Graphic. No information, reproduction or use of any part hereof is to be made without written permission.

Tolerance unless otherwise specified:
 machined surfaces ISO 2768 - M
 other surfaces ISO 125
 H0.5

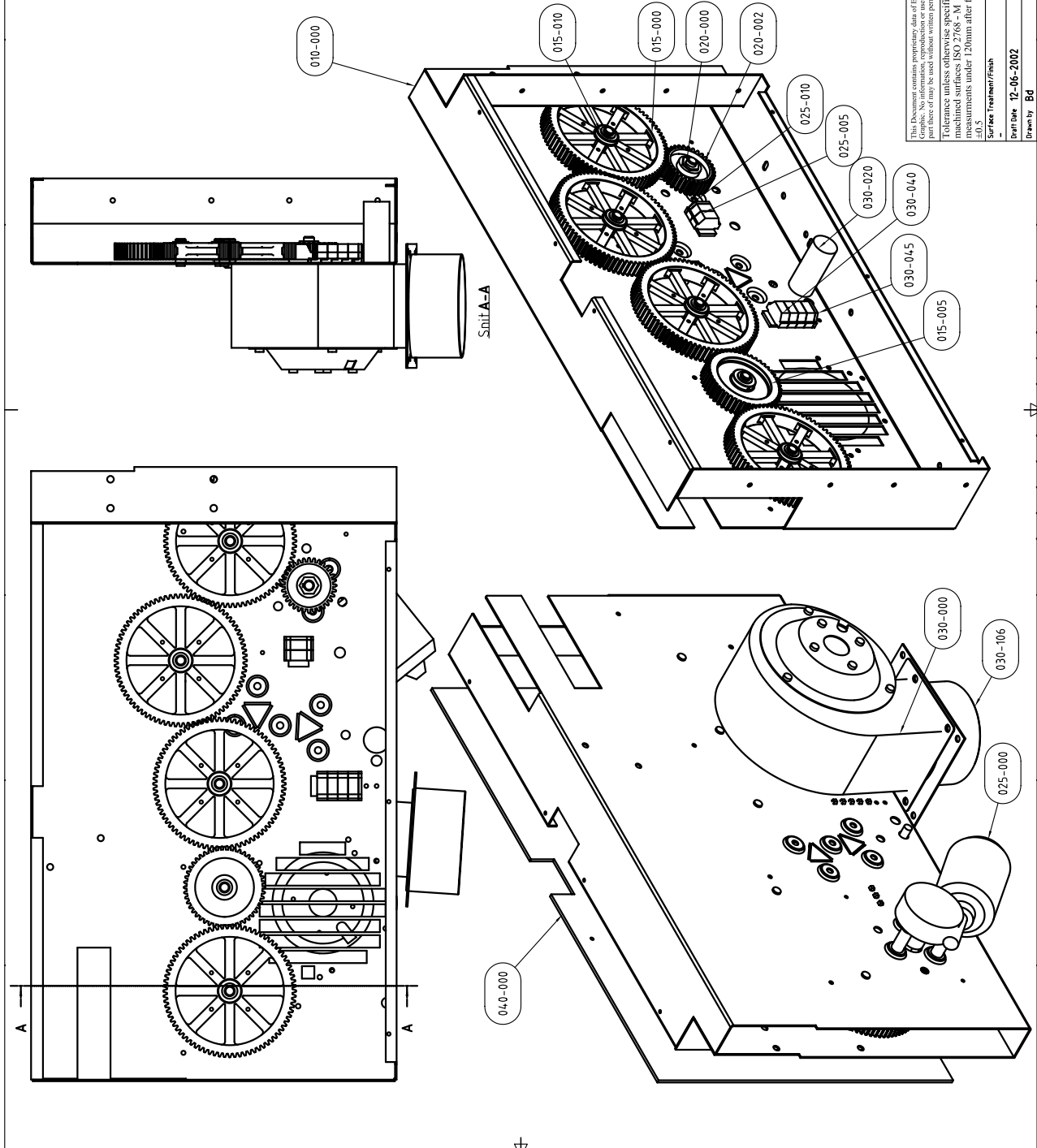
Surface Treatment/finish
 -

Echo Graphic
 Echo Graphic NV
 P.O. Box 111
 2000 Ghent
 Belgium
 Tel: +32 (0) 90 20 20 20
 Fax: +32 (0) 90 20 20 21
 E-mail: info@echo-graphic.be
 www.echo-graphic.be

Scale	1:2.5
Sheet Number	1
DWG NO	320459
REV	A
Drawn by	CK
Checked by	
Drawn title	Pump Assy 3pumps+MV, EG90x
Scale	1:2.5

SECTION EIGHT: Off-Line Description Eastman Kodak Models

Pos.	Dwg/part nr	Title	Pcs
010	10-xxx		1
010-000	320181	Console dry	1
010-005	88396	Pop rivet AISI305 74,1 maxx6,4	8
010-010	911530	Blanking plug PG13,5 BLK	2
010-015	800022	Nut for STP 19,5 relief	2
010-040	9101	Grommet Open ø9,16 MM Neopren	4
010-100	17061	Modification Label	1
015	15-xxx		1
015-000	65139	Gear wheel 80-T ø10 MM	4
015-005	123413	Gear wheel 48T 10,2ø width=16	1
015-010	88246	Lock Disc 15x9,5x1MM	5
020	20-xxx		1
020-000	217305	Hexagon hub 16x28 key slot	1
020-001	88024	Screw M 4x12 PHX-Pozt 1985 A4	1
020-002	88245	Lock Disc 4,3 MM A4 Din 6798	1
020-003	88248	Washer 1,5x4,2x18,2mm AISI316	1
020-002	175114	Gear wheel 32-T NV 16	1
025	25-xxx		1
025-000	170161	DC motor Bo. 4,2RPM	1
025-005	8486	Terminal 4x2,5mm ² CAGE-C hor.	2
025-010	8487	Endpiece for 8486 Terminal	1
025-015	9037	Cable 2x0,75mm ² w.Cliffen	180
025-060	828003	RC Network 0,7uF+4n7 275VAC	1
025-065	88368	Screw umbraco head cap M6x12	3
025-070	88249	Lock Disc A19 Din 471	1
030	30-xxx		1
030-000	170148	Exhaust blower	1
030-005	88023	Screw M6 4x10 A4 Din 1985	4
030-010	88201	Spring Washer 4MM A4 Din 12TB	4
030-020	129013	Condensator driff 2uf 400V ac	1
030-040	8486	Terminal 4x2,5mm ² CAGE-C hor.	4
030-045	8487	Endpiece for 8486 Terminal	1
030-050	9014	Cable 3x0,75mm ²	190
030-105	88368	Screw umbraco head cap M6x12	4
030-106	305205	Studs F.Blower, ø100, Black	1
040	40-xxx		1
040-000	320012	Cover for geartrain box	1
040-005	17077	Warning Label	1



Echo Graphic

1. Echo Graphic A/S Phone int.: +45 98 57 19 55
 2. Haandværkervej Fax int.: +45 98 57 15 91
 DK-9560 Høndst. e-mail: info@echographic.dk
 www.echographic.dk

This document contains proprietary data of Echo Graphic. It is not to be distributed outside the company. Its use for other purposes is prohibited. Its use for other purposes may be used without written permission.

Tolerances unless otherwise specified:
 machined surfaces ISO 2768-M
 measurements under 120mm after folding
 ±0,5

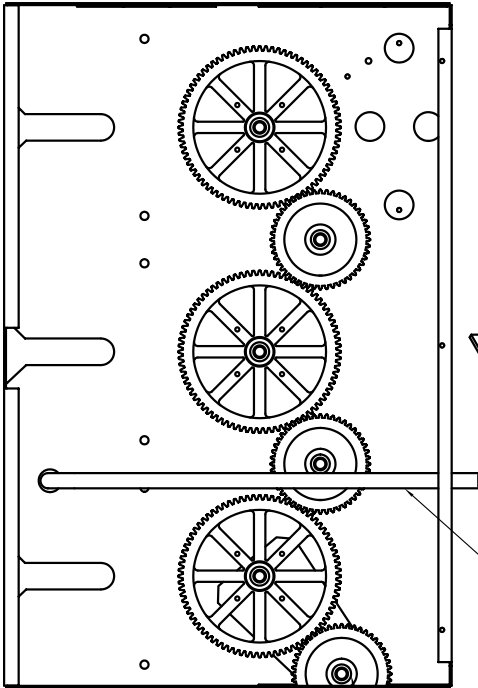
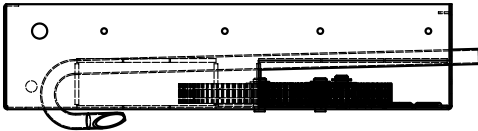
Scale	1:25
Sheet Number	1
Part Name	305249
Drawn by	Bd
Drawn date	12-06-2002
Material	
Form file	

SECTION 8

SECTION EIGHT: Off-Line Description Eastman Kodak Models

SECTION 8

Parts List			
Pos.	Dwg/part nr.	Title	Pcs.
010	10-xxx		1
010-000	320081	Geartrain Box dev.	1
015	15-xxx		1
015-000	65139	Gearwheel 80-T ϕ 10 MM	3
015-005	233413	Gearwheel 48T 10.2 ϕ width=16	2
015-010	88246	Lock Disc 15x9.5x1MM	5
020	20-xxx		1
020-000	233413	Gearwheel 48T 10.2 ϕ width=16	1
020-005	305244	Mesh Lever f.dev-dry gear con	1
020-010	88246	Lock Disc 15x9.5x1MM	1
030	30-xxx		1
030-000	305406	Water inlet pipe, U-shaped	1
040	40-xxx		1
040-000	320012	Cover for geartrain box	1



020-000

020-010

030-000

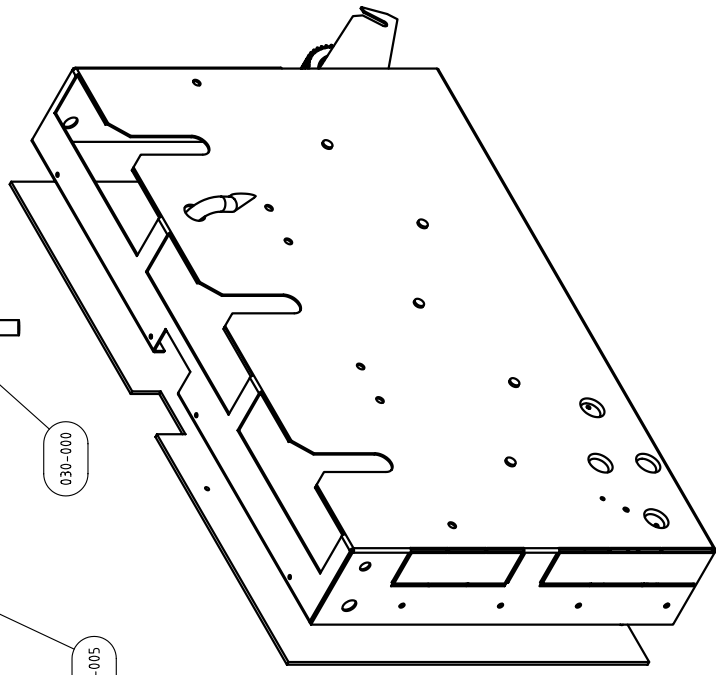
020-005

010-000

015-000

015-010

015-005



This Document contains proprietary data of Echo Graphic. All information, reproduction or use of this document is prohibited without the written permission of Echo Graphic.

Technical surfaces otherwise specified:
 mated surfaces ISO 2768-M
 measurements under 120mm after folding
 ±0.5

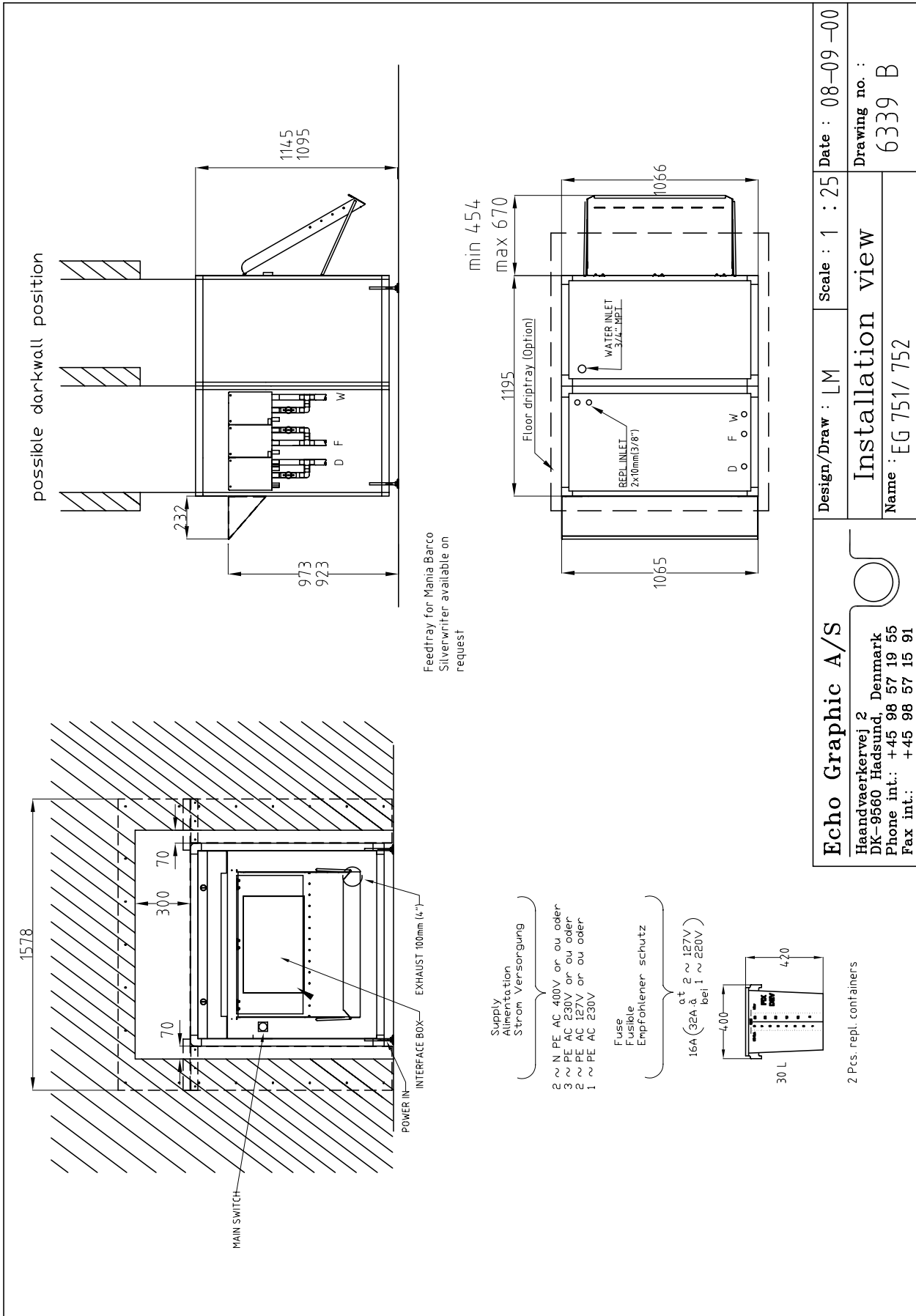
Surface Treatment/Finish
 -

Drawn by: **20-06-2002**
 Drawn by: **Bd**

Echo Graphic

1 Echo Graphic A.S. Phone int.: +45 98 57 19 55
 2 Håndværkervej Fax int.: +45 98 57 15 91
 DK-9560 Hulsund e-mail: info@echographic.dk
 www.echographic.dk

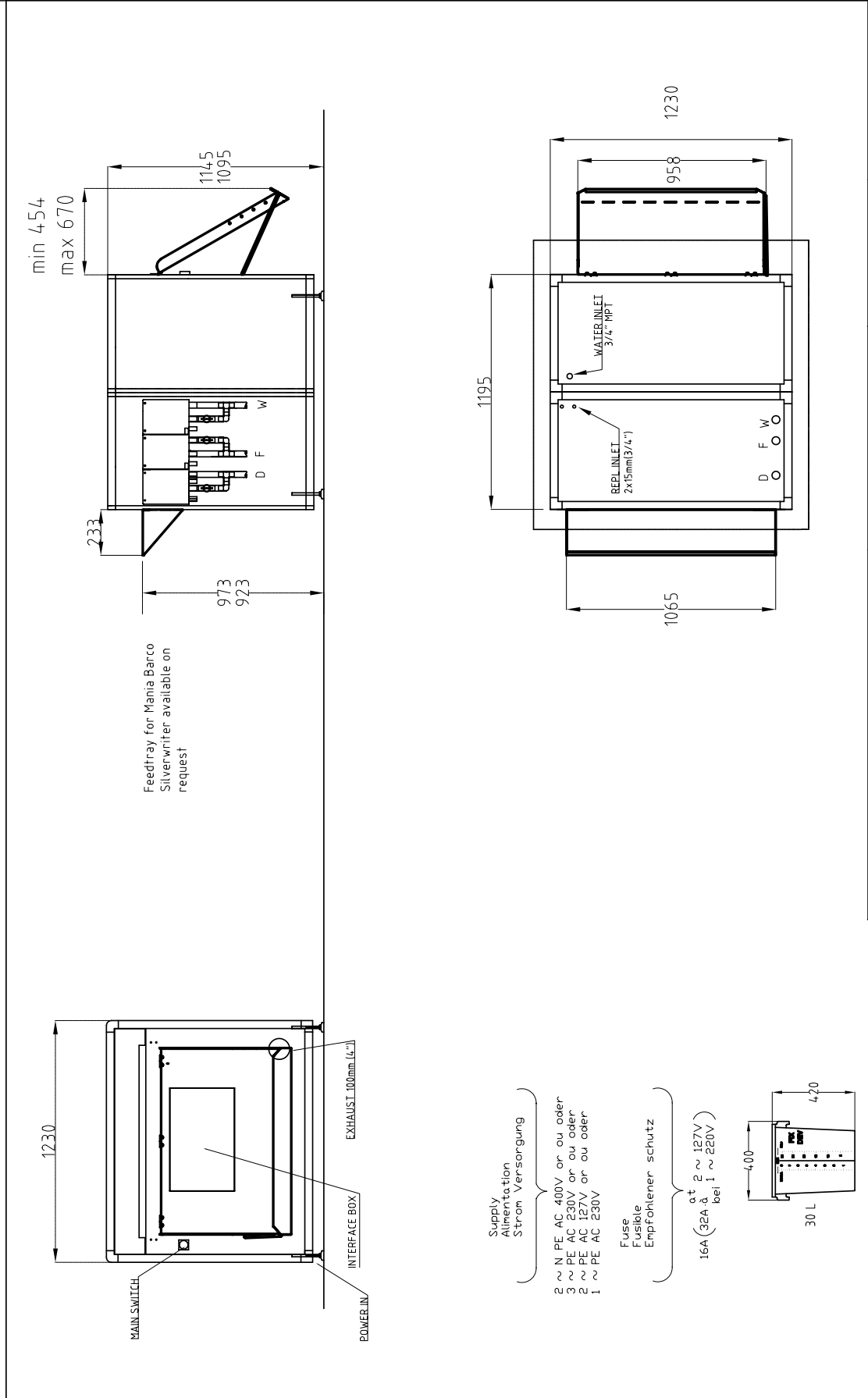
Size	Sheet Number	Scale
A2	1	1:2.5
Drawn file		REV
Main geartrain box.dev		305239
Drawn by: Bd		-



Installationview 6339

SECTION 8

SECTION EIGHT: Off-Line Description Eastman Kodak Models

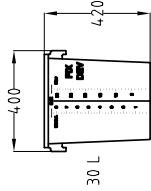


Supply
Alimentation
Strom Versorgung

2 ~ N PE AC 400V or ou oder
3 ~ PE AC 230V or ou oder
2 ~ PE AC 127V or ou oder
1 ~ PE AC 230V

Fuse
Fusible
Empfohlener schutz

16A (32A at 2 ~ 127V
bei 1 ~ 220V)

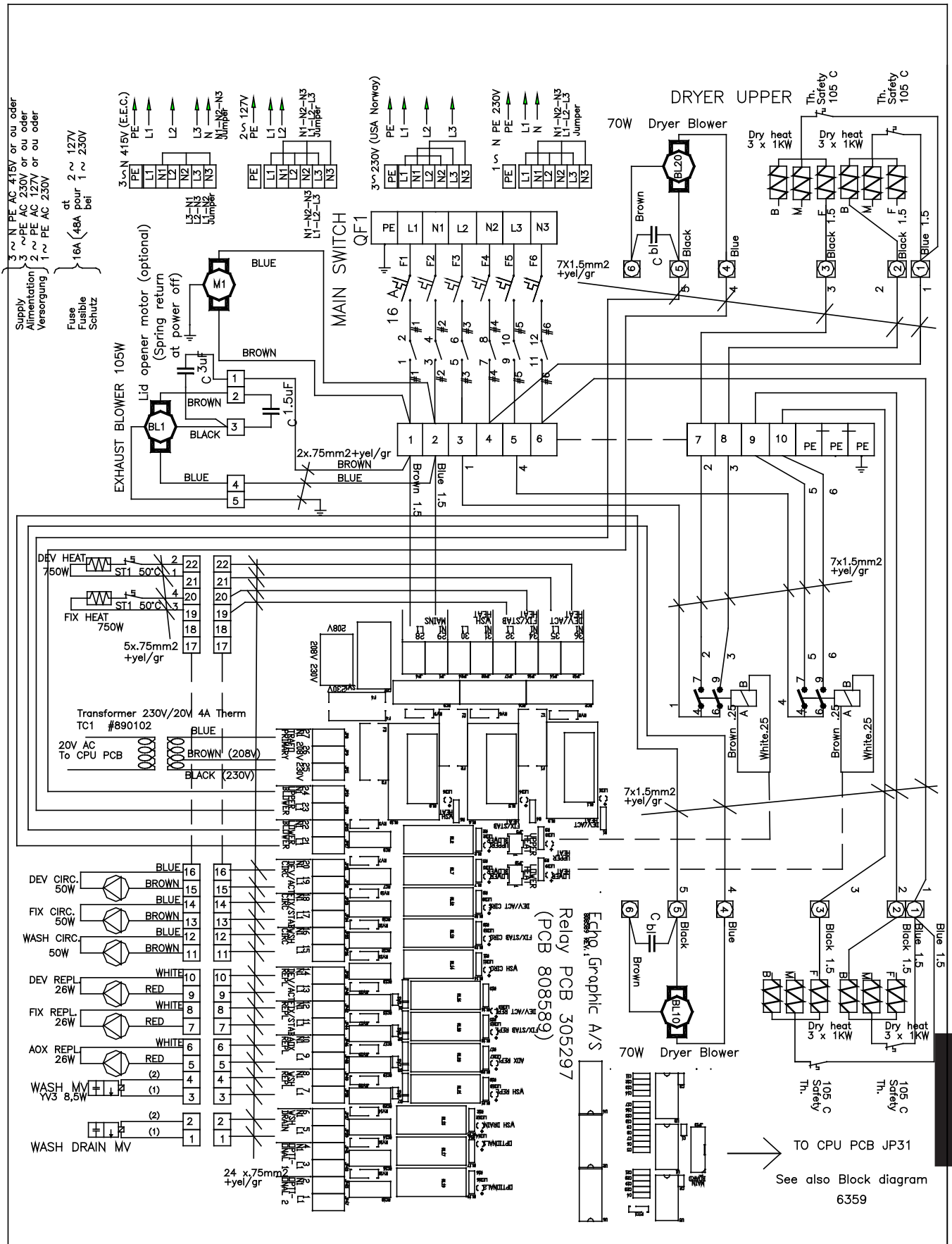


2 Pcs. repl. containers

<p>Echo Graphic A/S Haandvaerkervej 2 DK-9560 Hadsund, Denmark Phone int.: +45 98 57 19 55 Fax int.: +45 98 57 15 91</p>	<p>Design/Draw : LM</p>	<p>Scale : 1 : 25</p>	<p>Date : 11 -09 -00</p>
	<p>Installation view</p>		<p>Drawing no. : 6340 C</p>
<p>Name : EG 901/ 902</p>			

Installationview 6340

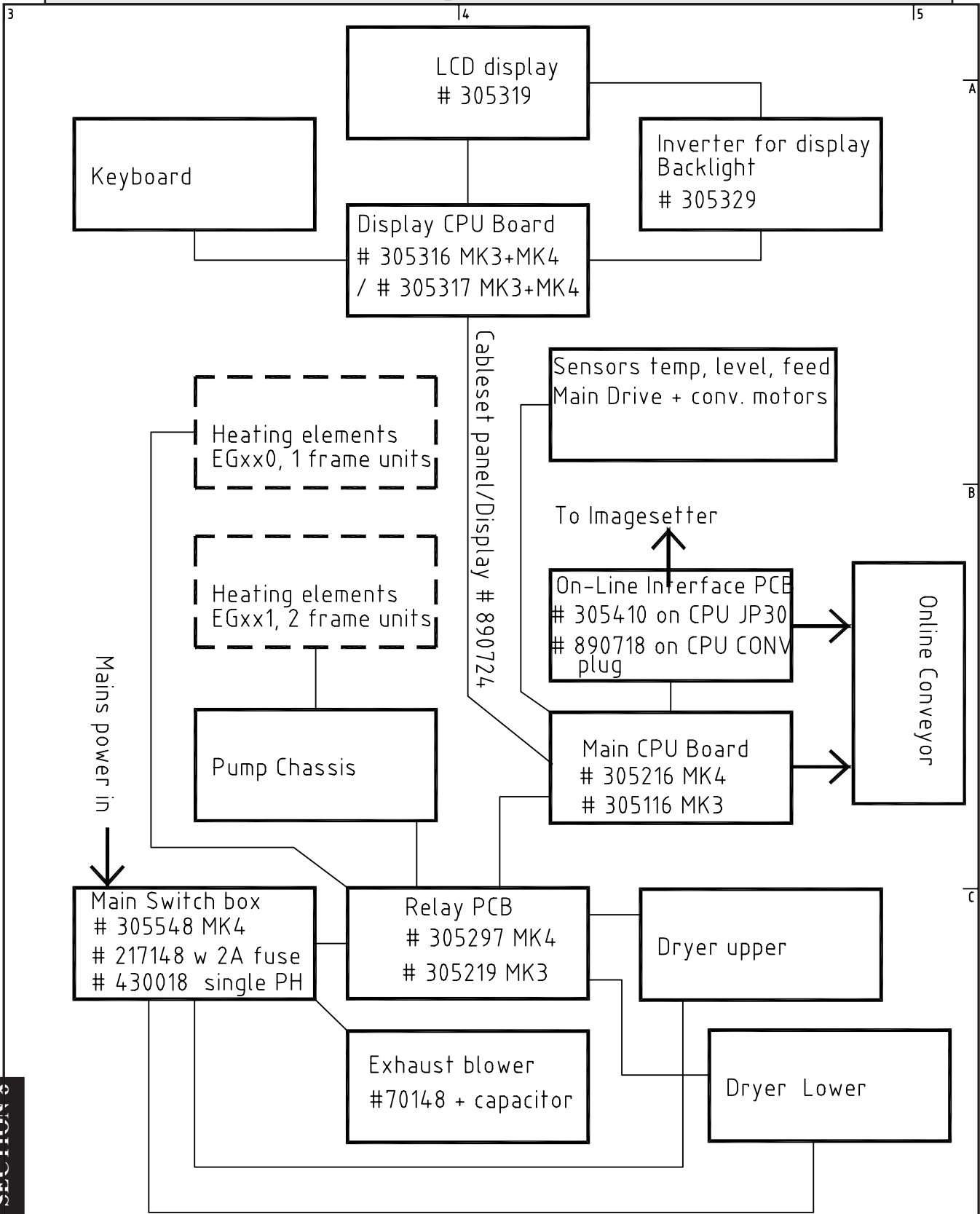
SECTION EIGHT: Off-Line Description Eastman Kodak Models



SECTION 8

<p>Echo Graphic A/S Haandvaerkervej 2 DK-9560 Hadsund, Denmark Phone int.: +45 98 57 19 55 Fax int.: +45 98 57 15 91</p>	Design/Draw : CV Name: Interconn. diagram EG xx1PCB	Scale : : Date : 10-01-02	Drawing no. : 6356 B
---	---	------------------------------	----------------------

SECTION EIGHT: Off-Line Description Eastman Kodak Models



SECTION 8

Echo Graphic A/S Haandvaerkervej 2 DK-9560 Hadsund, Denmark Phone int.: +45 98 57 19 55 Fax int.: +45 98 57 15 91	Design/Draw : CV	Scale : :	Date : 10-01-02
	Name Block diagr.EG MK4	Drawing no. : 6359	-

Hope / Carnfeldt Off-Line Processors for Eastman Kodak:

	EG 750PCB.	EG 751PCB	EG 900PCB	EG 901PCB.
Dimensions (incl. receiving tray)				
Length	137 cm / 53.9"	158 cm / 62.2"	137 cm / 62.2"	158 cm / 62.2"
Width	107 cm / 42.1"	107 cm / 42.1"	123 cm / 48.4"	123 cm / 48.4"
Height	110 cm / 43.3"	110 cm / 43.3"	110 cm / 43.3"	110 cm / 43.3"
Shipping dimensions				
Length	167 cm / 65.7"	156 cm / 61.4"	145 cm / 58"	175 cm / 68.9"
Width	115 cm / 45.3"	115 cm / 45.3"	142 cm / 55.9"	142 cm / 55.9"
Height	129 cm / 50.8"	129 cm / 50.8"	129 cm / 50.8"	129 cm / 50.8"
Weight				
Net	218 kg / 514 lb.	274 kg / 761 lb.	300 kg / 661 lb.	395 kg / 871 lb.
Gross	300 kg / 695 lb.	450 kg / 992 lb.	420 kg / 926 lb.	520 kg / 1146 lb.
Specifications				
Inlet width	75 cm / 29"	75 cm / 29"	91 cm / 36"	91 cm / 36"
Tank capacity	25 l / 6.6 US gal.	26.5 l / 7 US gal	29 l / 7.6 US gal.	29 l / 7.6 US gal.
Rack length dev.	32 cm / 12.6"	45 cm / 17.7"	32 cm / 12.6"	45 cm / 17.7"
Developing time min. - max.	20-80 sec.	15 - 90 sec.	20 - 80 sec.	15 - 90 sec.
Speed at 30 sec. dev. time	64 cm/min 25.2"/min	88 cm/min 34.6"/min	64 cm/min. 25.2"/min	88 cm/min. 34.6"/min
Material with min / max		10 -72 cm / 3.9 - 28.3"	10-90 cm / 3.9 - 35.4"	10-90 cm / 3.9 - 35.4"
Min. /max. film length off-line	15 - 75 cm / 5.9- 29.5"	15 - 600 cm / 5.9 - 236.2"	15 - 600 cm / 5.9 - 236.2"	15 - 600 cm / 5.9 - 236.2"
Dev./fix./wash temperature range	20 - 45°C / 68 - 113°F	20 - 45°C / 68 - 113°F	20 - 45°C / 68 - 113°F	20 - 45°C / 68 - 113°F
Dry temperature range	25 - 55 °C	25 - 65 °C	25 - 55 °C	25 - 65 °C
Exhaust blower	Built in	Built in	Built in	Built in
Exhaust connection	Ø 10 cm/4"	Ø 10 cm / 4"	Ø 10 cm / 4"	Ø 10 cm / 4"
Circulation rate dev., fix.	10 l/min. 2.7 US gal	15-20 l/min. 3.9-5.3 US gal	10 l/min. 3.9-5.3 US gal	15-20 l/min. 3.9-5.3 US gal
Water consumption Max (operate)	0-9 l/m2 0-3,8 US gal/m2	0-9 l/m2 0-3,8 US gal/m2	0-9 l/m2 0-3,8 US gal/m2	0-9 l/m2 0-3,8 US gal/m2
Emission of heat to room (operate)	2000W/586 BTU/hr	2000W/586 BTU/ hr	2000 W/586 BTU/hr	2000 W/586 BTU/hr
Water connection	¾" pipe thread	¾" pipe thread	¾" pipe thread	¾" pipe thread
Drain connection	3 x 1" hose nipple	3 x 1" hose nipple	3 x 1" hose nipple	3 x 1" hose nipple
Replenishment containers	Dev./fix. 30l/8 US gal.	Dev./fix. 30l/8 US gal.	Dev./fix. 30 l/8 US gal.	Dev./fix. 30 l/8 US gal.
Max. power consumption	3450 VA	5900VA	3450 VA	5900 VA
Average power consumption:				
Operate	3100 W	5000W	3100 W	5000 W
Power save	600 W	1000W	600 W	1000 W
Night mode	450 W	600 W	450 W	600 W
Power supply:				
3/N/PE ~ 400V, 50/60 HZ		3 x 16 amp		3 x 16 amp
1/N/PE ~ 230V, 50/60 HZ	1 x 16 amp		1 x 16 amp	