

Moto-Cart Jr Electric Lift Service Manual



LIFT PRODUCTS INC
PO BOX 349
ELM GROVE WI 53122
262-521-5720 FAX 262-521-5725
Toll Free 877-543-8776

Models: JRMC-11-ELT

S/N _____

Customer _____

LIFT PRODUCTS, INC.

LIFT PRODUCTS, INC.

REGISTRATION INFORMATION

(To validate your warranty and receive updated service bulletins, please complete this form)

Date _____ Model No. _____

How did you first hear of Lift Products?

- Magazine Ad (Specify which magazine) _____
 Recommended by a dealer (Name of Dealer) _____
 Received information in the mail _____
 Internet _____
 Other (Please specify) _____

What factors caused you to choose Lift Products? _____

Describe how and where products are being used? _____

Name of person completing this form _____

Title _____

Company _____

Street Address _____

City, State, Zip _____

Phone _____ Fax No. _____

Purchased From:

Name of Dealer _____

Street Address _____

City, State, Zip _____

Phone No. _____ Fax No. _____

Please fax this form to 262-521-5725.

It is important to read and follow all the instructions and safety information contained in the Operation Manual prior to use.

We hope the carts will make your job easier and more fun. The Moto-Cart JR. can boost the productivity in your organization and reduce injuries caused by repetitive pushing or pulling a manual platform cart with heavy load. Therefore, you will create a safe working environment and minimize the worker's compensation insurance cost.

The cart is a battery power mobile platform truck used from moving materials, parts, or machinery from one location to another without having to manually carry the load or push a wheeled cart. These heavy push or pull cart applications can occur anywhere.

If these carts need constant pushing or pulling from one location to another and cause fatigue to the employee moving the load, than it is a perfect application for our battery powered, electric cart.

PACKING LIST

- (1) Folded Cart
- (8) M8x20 Screw

SPECIFICATIONS

- Motor 24 volt/370 watts Battery 2x12 v/40 Ah sealed lead acid Battery
- Battery Charger 100-220V-50/60Hz<1.5A AC/24VDC
- Charge Time: 7 hours
- Controlled Curtis 70A 24V

OPERATION

1. **Turn ON Power**
Insert the power key into the switch lock and turn clockwise to the "ON" position. All the battery display lights should be on indicating the batteries are full and ready to work.
2. **Check the Status**
The status light should be on steadily if the electric and driving systems are OK. If it flashes, check the clutch engagement first.
3. **Forward Motion**
Start your cart stand behind the tiller and hold the "bull-horns" with two hands. Look straight ahead. Press the upward throttle lever by your two-hands four fingers slowly to start moving forward. The speed should increase as you press more.
4. **Stop Cart**
Slowly releasing your four fingers from the throttle lever will reduce the speed and stop the cart.
5. **Emergency Stop**
Just simply release your fingers quickly. The Cart should stop within 4.5 feet at full forward speed.

Touch the Emergency stop button to stop the Trolley.

6. Reverse Motion

Press the downward throttle lever by your two-hands four fingers slowly to start moving reverse.

7. Forward Steering

Look straight ahead. When you need to turn right, you turn the “Caster” to the left. Vice a versa for the left turn.

Reverse Steering: The operation is the opposite as forward.

Move Manually (free wheeling):

Manual: You push or pull the Cart by disengaging the clutch in the transaxle.

Power: You can push or pull the Cart by pressing the free-wheel button by your right hand finger and operating by your left hand.

WARNING: Before you operate, practice in a open area for at least one hour to get familiar with the Cart and gain the operation skills. The brake may not be effective when engaged on inclines greater than the grade with allowed load. Be alert!

EMERGENCY STOP

In case of out-of-control, turn the power off or pull safety button immediately.

SAFETY INSTRUCTIONS

We disclaim all responsibility for any personal injury or property damage, which may occur as a result of improper or unsafe use of its products. The following guidelines are intended to assist you in the safe operation of your cart. Should you have any questions about the correct operation of your Cart, please contact dealer.

Your cart can negotiate grass, gravel, dirt, and sand surfaces, as well as hard paved or carpeted surfaces. However, extra caution should be taken when operating your unit on uneven surfaces other than flat surfaces.

If unintended motion or brake release occurs, turn the power OFF as quickly as it is safe.

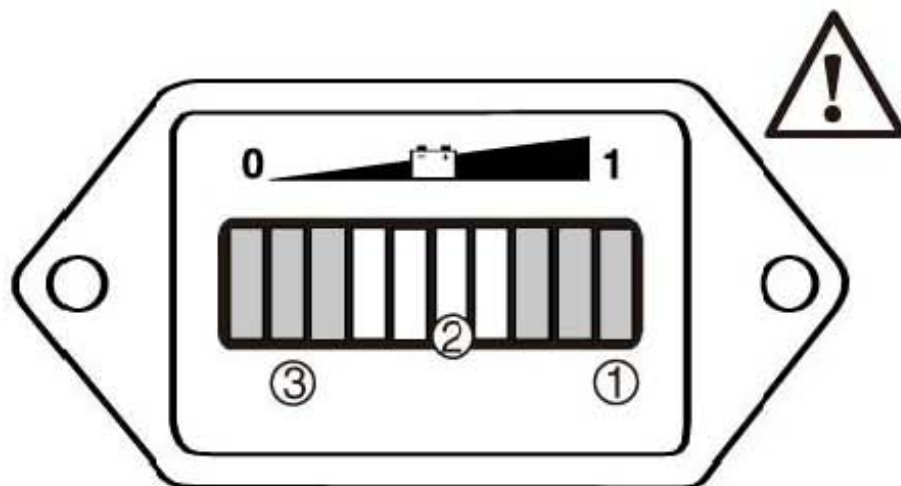
IN SUMMARY:

- **DO NOT** try to climb sharp curbs.
- **DO NOT** drive over obstacles exceeding 5cm in height.
- **DO NOT** make an abrupt change in high speed or while traveling on an incline.
- **DO NOT** attempt to make fast turn on flat surfaces.
- **DO NOT** climb inclines greater than 8° degrees or a rise of 2 meters in 10 meters.
- **DO NOT** back onto uneven surfaces or inclines.
- **DO NOT** attempt to operate your unit in a stalled condition, such as traveling up to steep an incline. This may cause the circuit breaker or thermal cut out to trip, rendering your unit temporarily immobile.
- **DO NOT** operate unit when the red battery indicator light is flashing.

BATTERY CHARGING

To ensure the best performance and maximum battery life, we recommend frequent battery charging. Your Cart comes with an on-board battery charger for your ease and convenience. The console battery display makes charging simple and easy. Follow these steps for battery charging.

1. The console battery display:



- Only when the battery is properly charged is the right-most green LED lit.
 - As the battery's state-of-charge decreases, successive LEDs light up, only one on at a time.
 - The 3rd-from-left red LED flashes, indicating "energy reserve" (70% depth of discharge).
 - The 3 left-most LEDs alternately flash, indicating "empty" (80% of depth of discharge).
2. On a level dry surface, turn off the power key and plug the AC cord into the charger socket located on the fiber-glass compartment. Plug the other end of the AC cord into a grounded wall outlet.
 3. Charge the battery for 6-8 hours depending on the usage before charging. Disconnect the AC cord, insert key into tiller and check if all green lights are on.
 4. There is no possible way to overcharge the battery since the charging voltage in the floating stage is set constant. In general, you may start charging after work and disconnect it in the next morning.

WARNING: You must turn off power before charging. Otherwise it may damage the electric circuit.

MAINTENANCE SCHEDULE

In order to obtain the best performance and last its service life, please maintain your unit according to the following schedule and instructions.

DAILY

1. Test brake effectiveness before you drive.
2. Recharge batteries fully every night.

WEEKLY

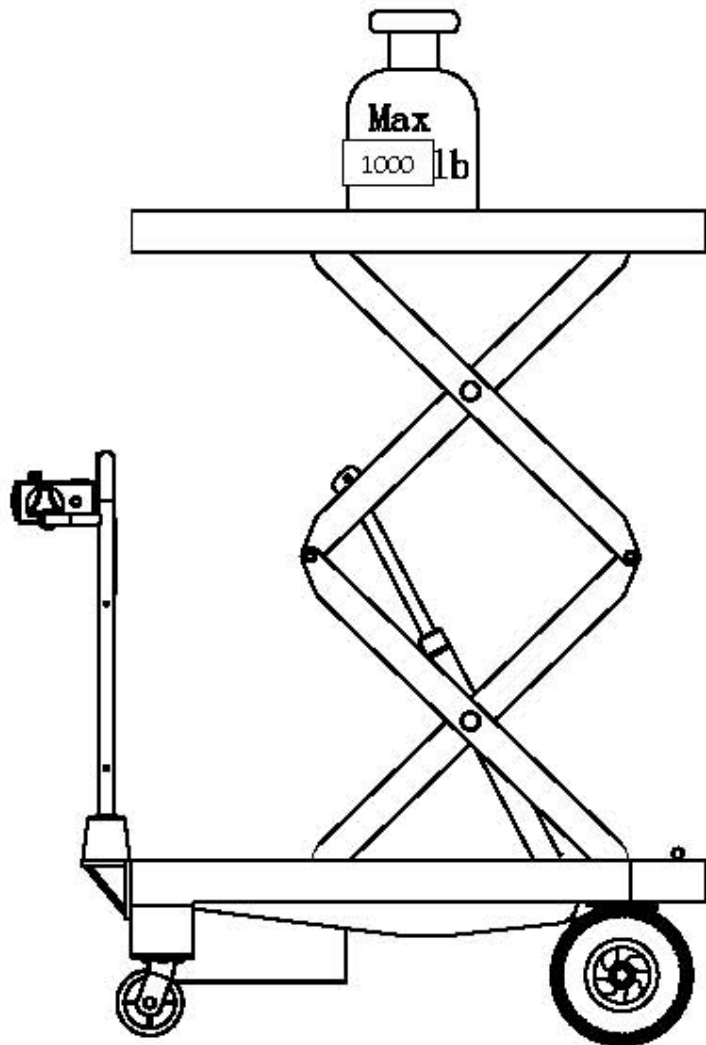
1. Check tire pressure. Pressure should be 40-50 psi.
2. Check and tighten the throttle screw.

MONTHLY

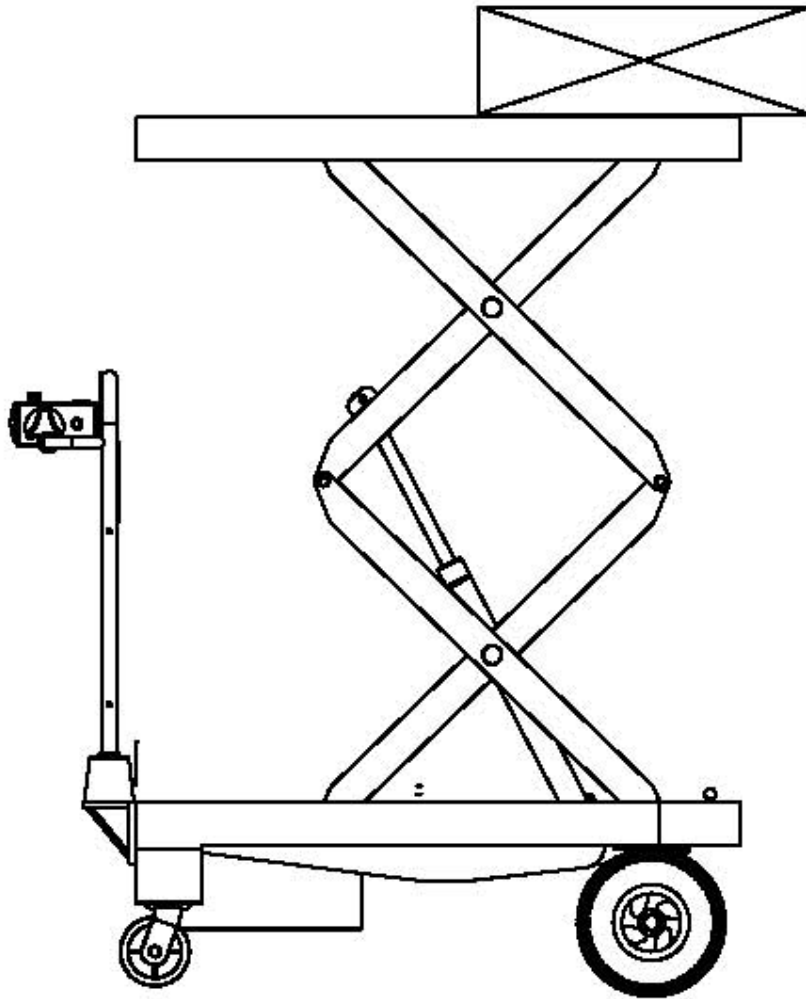
1. Check battery condition. Clean battery terminals if necessary.
2. Check all electrical wire connectors to eliminate loose connections.
3. Tighten all exposed screws and nuts.
4. Check wheel bearings by spinning tires and checking for free rotation.

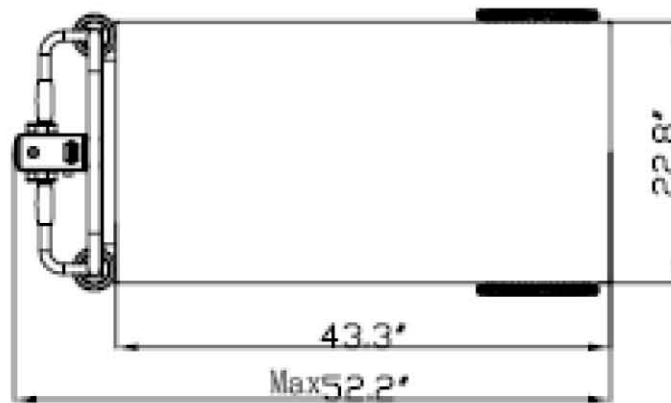
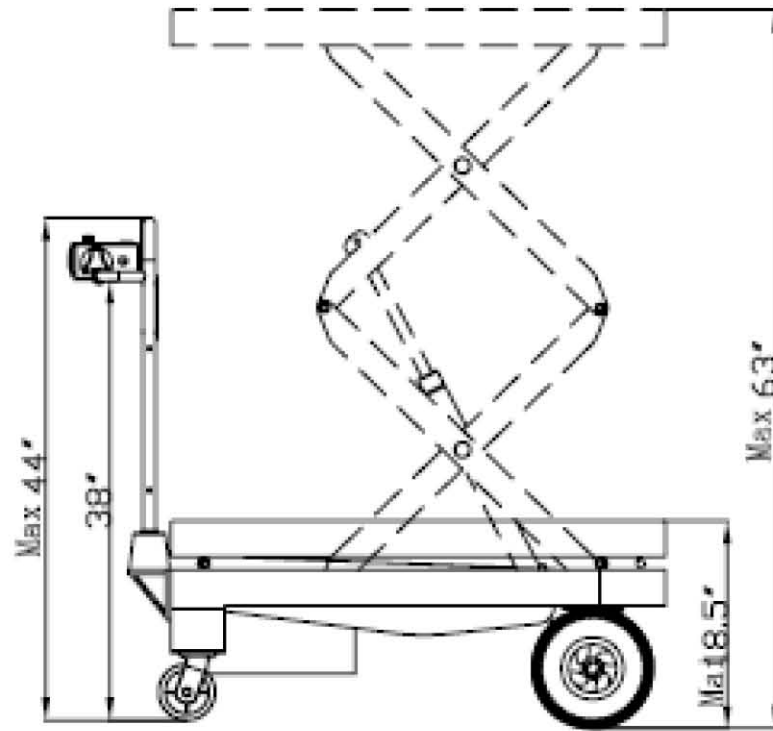
THROTTLE ADJUSTMENT

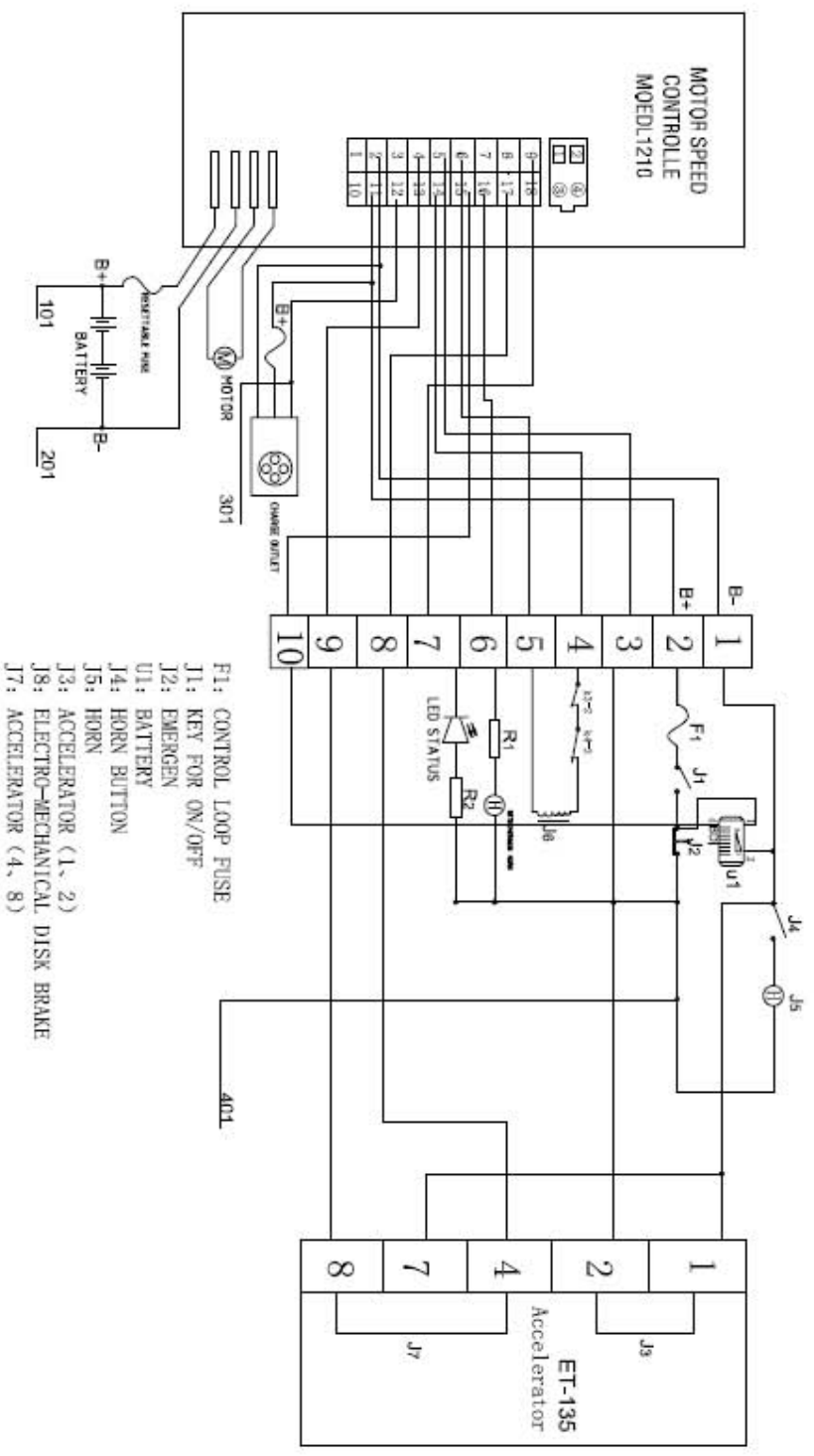
1. Release the clutch lever, thus the motor can rotate freely.
2. Note on the throttle control potentiometer, when the control lever is swinging, how the mount plate retain one end of the spring while the control bracket pulls the other end of the spring in the direction of rotating. As the lever rotates in the opposite direction, the other spring end is pulled in the opposite direction.
3. With key in and speed setting at low, rotate the throttle lever until you just hear the brake release click and motor starts running. Notice the angle rotated between the lever and the Cart horn.
4. Rotate the throttle lever in the opposite direction till just brake releases clicks, notice the angle rotated between the lever and the Cart horn in this direction.
5. If the angles are not identical, loosen control bracket screws, rotate potentiometer shaft a few degrees by using a flat screw driver and then retighten it.
6. Repeat until the reverse, neutral, and forward are in proper ranges.
7. Make sure throttle control lever is parallel to tiller handle. If the lever is not parallel, full range rotation in on direction will not be possible, resulting in loss of speed in that direction.



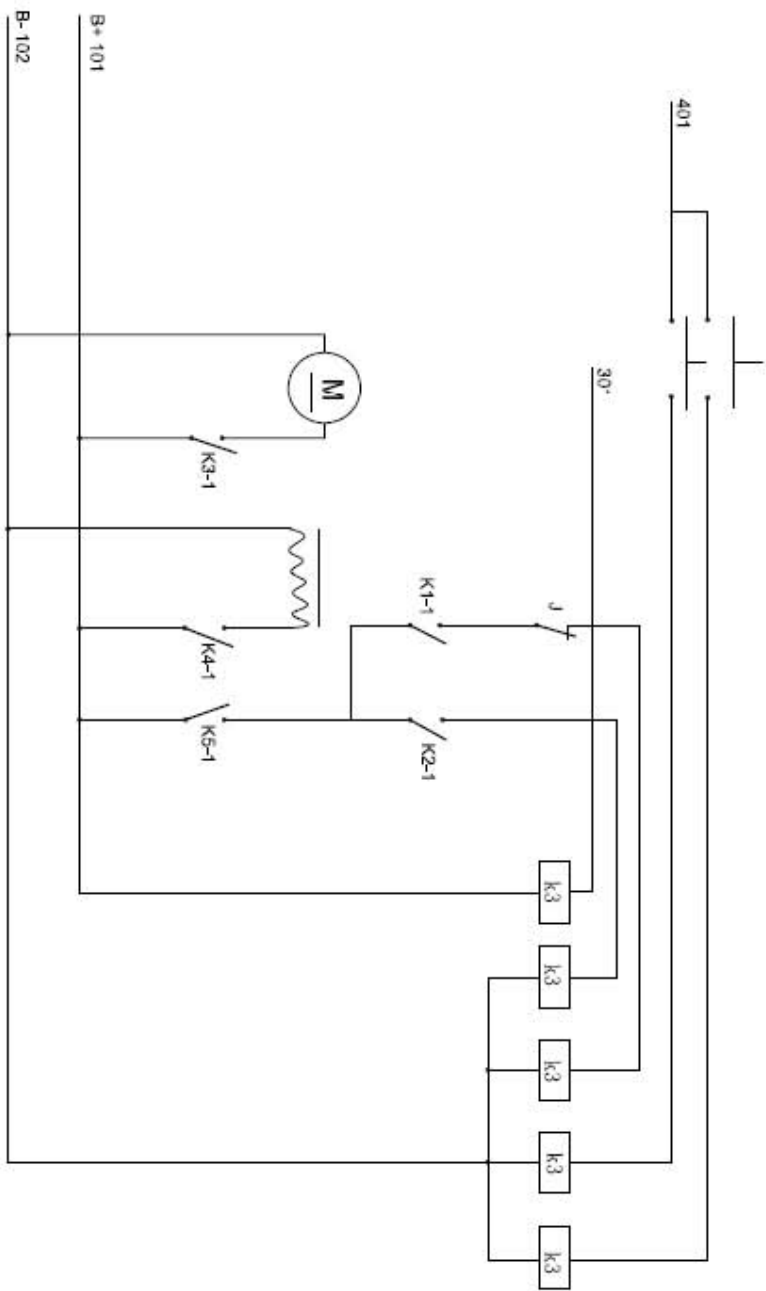
Reduces Capacity By 50%

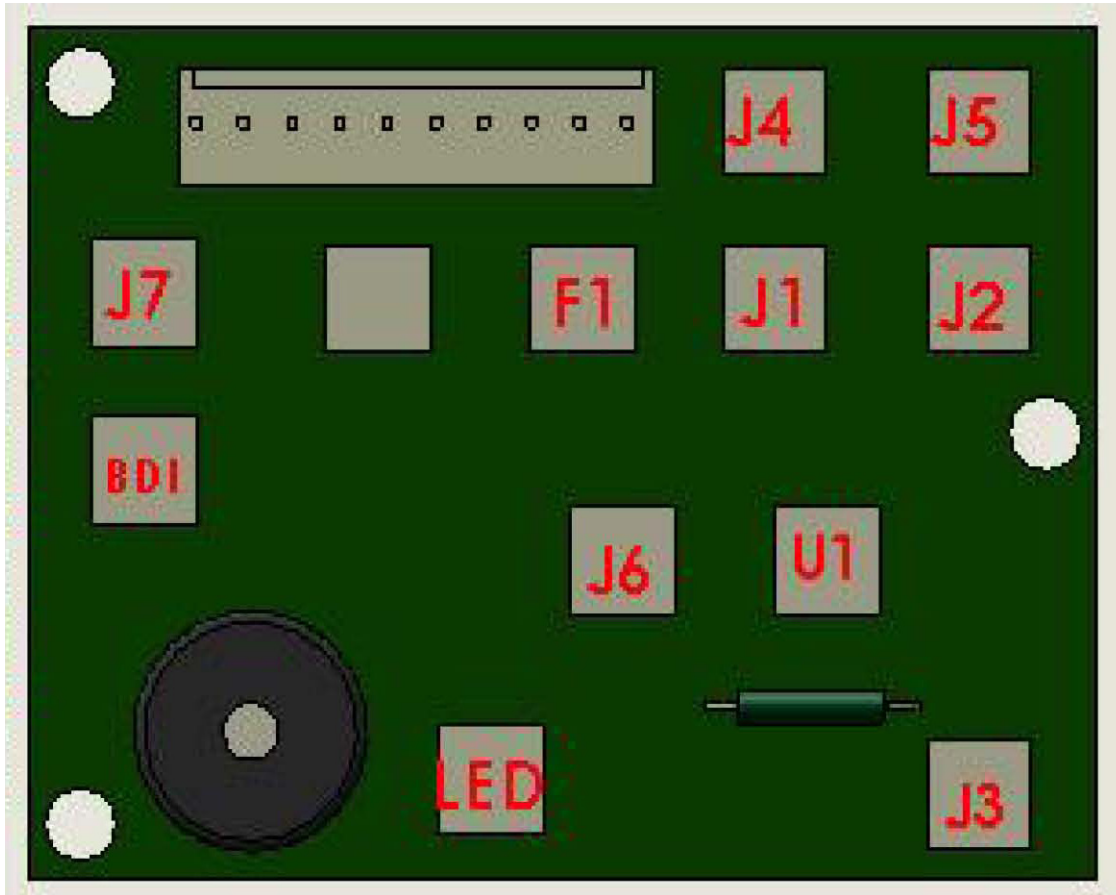






- F1: CONTROL LOOP FUSE
- J1: KEY FOR ON/OFF
- J2: EMERGEN
- U1: BATTERY
- J4: HORN BUTTON
- J5: HORN
- J3: ACCELERATOR (1, 2)
- J8: ELECTRO-MECHANICAL DISK BRAKE
- J7: ACCELERATOR (4, 8)





Item	Name	Item	Name
F1	Fuse	J6	Electro-Mechanical Disk Brake
J1	Key Switch	J7	Accelerator Throttle (Black White Line)
J2	Emergency Stop	BDI	Battery Fuel Gauge (0-5V)
J3	Power Accelerator (Orange Line)	LED	Failure Indicator Light
J4	Horn Switch	U1	Battery Fuel Gauge (DC24V)
J5	Horn		