

CR-V  
SERIES II



The Honda CR-V Series II.  
Stunning design and  
cutting-edge tech all in  
one perfectly-sized package.



CR-V VTi-L with ADAS shown in Carnelian Red Pearlescent.



Life moves fast. One minute, you're picking up the kids after school. The next, you're packing up for your big on-road adventure. In the CR-V Series II, you can do both. Just like you, the CR-V has evolved. With a bold new look and some state-of-the-art technology on board, you won't want to wait to get behind the wheel.

Road trip or shopping trip? Either way, the CR-V has space to boot. The famous one motion fold 60:40 split rear seats create cavernous cargo space, made all the more practical by its many special interior compartments.

CR-V Series II sees some new additions to the range. The VTi, VTi-S and VTi-L models are now

available in both 2WD (all with the very efficient 2.0L i-VTEC petrol engine) or in 4WD (with the more powerful 2.4L i-VTEC petrol engine).

You'll find plenty to obsess over. Like the re-imagined Display Audio touchscreen system, striking new alloy wheels, attractive LED Daytime Running Lights (DRLs) and a fearless front-end that's all new from bumper to grille.

But one thing that hasn't changed is the 5-star ANCAP safety rating. A multi-angle reversing camera as standard, plus LaneWatch in the VTi-S and above models, makes the CR-V Series II one very safe ride.





# THE CR-V THAT'S BIG ON LOOKS BUT JUST RIGHT IN SIZE.

The confident contours of the CR-V take on a whole new attitude in the Series II. Right from the dynamic front grille, shaped like the spread wings of an eagle, it looks set to swoop.

But it's the function behind the form that makes the CR-V such an attractive prospect. Its forward-positioned windshield leaves more room in the cabin, while the sleek lines provide the aerodynamics. For a car that feels so big inside, the exterior seems remarkably small.

Brand new bumper designs are brought to life with modern lighting effects: LED Daytime Running Lights (DRLs), a redesigned tailgate spoiler and tailgate arrangement and captivating front fog lights on the VTi-S and above models. Roof rails come as standard on every Series II model, giving the CR-V an adventurous edge. For a compact package, the Series II fits in a lot of upgrades.



CR-V 4WD VTi-L shown in Alabaster Silver Metallic.





Where to go  
when you're after  
your own space.

As soon as you open the doors of the CR-V Series II, you'll instantly feel right at home. Everything is positioned perfectly, right where you would have put it yourself.

Take a seat and you'll find a new grade of luxury all around you. The materials chosen (like finely stitched leather seats\*<sup>#</sup> and wood-grain look panels<sup>~</sup>) are of the high quality you've come to expect from Honda, while the attention paid to your comfort will continue to surprise you long after you leave the showroom.

Like the special sound insulating material that's fitted around the wheel arches, door frames and other sound-entry points to ensure your ride is free from outside interruptions. Or the dual-zone climate control in the VTi-S and above models that means even your passengers can enjoy the perfect temperature. The VTi-L's 8-way power adjustable driver seat with memory for two custom positions ensure that even if someone else drives your car, you'll come home to comfort.

But it's the clever use of space inside the CR-V that makes the ride so comfortable and so unforgettable. The car has been built with a low cargo floor with wide opening rear doors so you can pack a lot more in, a lot more easily. With a simple pull on the handle this versatility becomes apparent as the back seats fold flat, transforming the car from a family-friendly five-seater into a movable open space, capable of carrying up to 1648<sup>†</sup> litres of whatever you fancy.

<sup>^</sup>VTi-L models only. <sup>#</sup>Leather seat trim includes non-leather material on selected, high impact surfaces.  
<sup>~</sup>VTi-S and VTi-L models only. <sup>†</sup>Load to roof with rear seats down.  
CR-V 4WD VTi-L with ADAS shown.





Having the latest technology  
is great. Having it where  
you need it most, is clever.

How is it that every instrument on the dash of the CR-V Series II is exactly where you'd expect to find it?

Research. The engineers at Honda tracked where drivers' eyes venture most and rearranged every gauge to fall in line with those natural movements. You'll never spend longer than is necessary with your eyes off the road.

At the heart of it all is the 7-inch colour touchscreen Display Audio system, connecting you via Bluetooth® to any

compatible smartphone.<sup>2</sup> That means your contacts, favourite music and more can come along for the ride. You can access it all with clever steering wheel-mounted controls, or even Siri® voice commands<sup>3</sup>. So next time you're changing tracks or making a phone call,<sup>4</sup> your eyes can stay firmly on the road.

The display screen also acts as the multi-angle reversing camera, and in the VTi-S and above, this is where you'll find the LaneWatch display. The VTi-L utilises

the touchscreen for its built-in Satellite Navigation system with live SUNA<sup>†</sup> traffic updates working to avoid congestion and potential traffic hazards. All the information you'll need along the way is available at a glance thanks to i-MID, a display for fuel economy, trip information, vehicle warnings and anything else you might need to know about your car and your trip. Don't worry about learning where everything is – after one drive, you'll be an expert.

<sup>2</sup>The Bluetooth word mark is owned by Bluetooth SIG, Inc. and use of such mark by Honda is under license. Compatibility and functionality may vary depending on the device.  
<sup>3</sup>Requires compatible iOS7 device (iPhone 4S or newer). Drive responsibly. iPhone, and Siri are trademarks of Apple Inc., registered in the U.S. and other countries. iOS is a trademark of Cisco in the U.S. and is used under licence. All other trademarks are properties of their respective owners. <sup>†</sup>SUNA is a registered trademark of Intelmatics Pty Ltd. Coverage includes Melbourne, Sydney, Brisbane, Gold Coast, Adelaide, Perth and Canberra metropolitan areas. Refer to [www.sunattraffic.com.au](http://www.sunattraffic.com.au) for full details.  
CR-V 4WD VTi-L with ADAS shown.





Multi-angle reversing camera screen – VTi-L model shown.

# Take control with the wave of a finger.

Welcome to your 7-inch colour Display Audio unit – the command centre for all your music, communication, camera displays and more.

From here you can access the multi-angle reversing camera with three modes to chose from: normal view, wide view and top-down view. It also acts as the display screen for LaneWatch<sup>^</sup> – an ingenious feature designed to minimise one of the most notorious blind spots for any vehicle.

Answer a call with Bluetooth<sup>®</sup>, send a text with Siri<sup>†</sup>, or even watch video content when your car is stationary<sup>^</sup>. Now you have the whole world at your fingertips.



LaneWatch Display<sup>^</sup>.



## Multimedia

You wouldn't set out on an adventure without your favourite tunes on hand. The CR-V gives you options – a CD player, USB ports and HDMI<sup>®</sup> port<sup>^</sup> plus Bluetooth<sup>®</sup> audio streaming<sup>^</sup>. So you won't miss a single beat. Of course, you can always tune in to your favourite station with the AM/FM radio.



## Navigation

In the VTi-L models, you'll find Satellite Navigation right there on the 7-inch colour screen. Using live SUNA<sup>†</sup> traffic updates, your car will always know where it's heading, what the best route is and how the traffic situation is looking.



## Handsfree connectivity

Your compatible smartphone and the CR-V make the perfect pair. With Bluetooth<sup>®</sup> and Siri<sup>†</sup> to control your contact list, music and more, you'll be in clever company wherever the journey takes you.



## USB/HDMI<sup>®</sup> ports

While tucked discreetly inside the centre console, your devices can stay charged via USB port, while playlists can be accessed on screen using your compatible smartphone. Pull over and the screen becomes a HDMI<sup>®</sup> ready video player<sup>^</sup>.

**WMA**

**MP3**

**MP4**

**Bluetooth<sup>®</sup>**

**HDMI<sup>®</sup>**  
HIGH-DEFINITION MULTIMEDIA INTERFACE

<sup>^</sup>VTi-S and above. <sup>®</sup>Requires compatible Bluetooth device. The Bluetooth word mark is owned by Bluetooth SIG, Inc. and use of such mark by Honda is under license. Compatibility and functionality may vary depending on the device. <sup>†</sup>Requires compatible iOS7 device (iPhone 4S or newer). <sup>^</sup>Compatible with iPhone 5 (running iOS7) or newer. Operates only while the vehicle is stationary. Requires HDMI cable, Apple-approved lightning cable and Digital AV adapter (these items may be purchased separately from your Honda Dealer). Apple, iPhone, iPod and Siri are trademarks of Apple Inc., registered in the U.S. and other countries. HDMI is a registered trademark of HDMI Licensing LLC in the United States and other countries. IOS is a trademark of Cisco in the U.S. and is used under license. All other trademarks are properties of their respective owners. <sup>†</sup>SUNA is a registered trademark of Intelmatics Pty Ltd. Coverage includes Melbourne, Sydney, Brisbane, Gold Coast, Adelaide, Perth and Canberra metropolitan areas. Refer to [www.sunatrafic.com.au](http://www.sunatrafic.com.au) for full details.





CR-V 4WD VTi-L shown in Modern Steel Metallic.

# Extra space comes standard.

An incredibly spacious cabin means you can pack more of your life into the CR-V Series II. The interior has been designed to maximise every inch of space for exceptional comfort. Meanwhile, the one-motion fold 60:40 split rear seats adjust instantly to make room for just about anything you can imagine. And with a range of Honda accessories available to upgrade the space further still, the possibilities of this amazing vehicle will surprise you time and time again.



Sunglasses holder.



Centre console.  
VTi-L model shown.



VTi-L shown.

## Auto dusk-sensing headlights

Dusk-sensing headlights are featured on the VTi-S and above, and in VTi-L models you can enjoy added visibility with exceptional High Intensity Discharge (HID) illumination<sup>§</sup>



## Side mirrors with integrated LED turn indicators

They may look absolutely stunning, but these LED turn indicator lights also have an important job to do. They'll give other drivers on the road an even better chance of seeing you when it's time to make that turn.



## Bluetooth® controls

Keep your hands free while talking on your mobile, or wirelessly stream music through Bluetooth® connectivity†.



## Paddle shifters\*

Ergonomic paddles on the steering wheel allow you to manually shift gears with ease, giving you more control over your drive.



## Dual-zone climate control#

Dual-zone climate control allows you and your front passenger to independently adjust the temperature.



## Auto-dimming rear-view mirror#

An electrochromatic rear-view mirror automatically adjusts to ambient light, reducing glare from the headlights of vehicles behind, improving visibility and safety during night-time driving.



## Auto wipers#

For greater convenience in wet weather, rain-sensing wipers take over and let you focus on the drive.



## Electric sunroof+

Feel part of the scenery you're driving through with a floating liner that lets you adjust how much light enters the cabin and an electric sunroof that opens up with tilt and slide functionality.



## Smart entry with push button start#

Leave your keys in your pocket or handbag, because with smart entry, the CR-V will unlock itself on sensing your touch. As long as you have the key fob on you, the CR-V will come to life – just press your foot on the brake pedal and hit the push start button. Turning the car off is just as easy.



## Leather-appointed\* seats

Attention to detail and craft is one of Honda's key attributes, and so it should come as no surprise that the seats in the VTi-L models are finely stitched leather.



## Heated seats

Heated front seats in VTi-L models offer an extra touch of comfort and luxury, and allow individual temperature settings for driver and front passenger alike.



## Electric seat with memory function

VTi-L models offer the driver an 8-way power adjustable seat with power lumbar support so finding the best driving position couldn't be easier. And if somebody else has been driving your CR-V, a memory function allows up to two drivers to save their preferred seating position meaning you can instantly retrieve your most comfortable setting.

<sup>§</sup>HID VTi-L only; VTi and VTi-S feature Halogen headlights. <sup>†</sup>The Bluetooth word mark is owned by Bluetooth SIG, Inc. and use of such mark by Honda is under license. Compatibility and functionality may vary depending on the device. <sup>¶</sup>Not available on 2WD VTi. <sup>#</sup>Available on VTi-S models and above. <sup>+</sup>VTi-L models only. <sup>\*</sup>Leather trim includes some non-leather material on selected, high impact areas.



# Economy or power – who says you have to choose?

Get there efficiently and effortlessly with your choice of engine and powertrains.

The CR-V 2WD models come with a 2.0 litre SOHC i-VTEC petrol engine, which thanks to Honda’s innovative variable valve timing and lift control, uses just 7.7L of fuel per 100km\*. You might expect some concessions on the performance side of things, but when you feel all 114kW of power and 190Nm of torque kicking in, you’ll see no compromises have been made.

If the 4WD models are more to your liking, the powerful 2.4 litre DOHC petrol engine is sure to impress with 140kW of power and 222Nm of torque.

### Transmission

Every CR-V model offers a 5-speed automatic transmission with Grade Logic Control (a unique system that eliminates ‘gear hunting’ on inclines by controlling the gear range on gradients). Conveniently located steering wheel-mounted paddle shifters on the 4WD VTi, and all VTi-S and VTi-L models allow you to upshift and downshift with ease, while the 2WD VTi offers the choice of a slick-shifting 6-speed manual transmission.

### Real Time 4WD<sup>^</sup>

4WD is amazing – when you need it. Unlike other four wheel drive systems that are constantly engaged, Real Time 4WD delivers all the drive to the front wheels. But if it detects the rear wheels slipping, it immediately and seamlessly transfers power to the rear wheels for full 4WD. By kicking in only when it’s needed, you’ll save fuel, reduce wear and tear and enjoy a quieter ride.

### Handling

It may have the bold look of an SUV, but at its core, the CR-V has been designed to manoeuvre like a much lighter car. The use of high tensile steel and advanced suspension technology, MacPherson struts at the front and double wishbone suspension in the rear increases body control and maintains a supple ride. You’ll love the sedan-like handling made possible through Motion Adaptive Electric Power Steering (MAEPS), which works with VSA to automatically adjust steering pressure, making it easier to steer in the stabilising direction. An unusually tiny 5.5 metre turning circle means even the most harrowing parking building poses no real challenge to this nimble SUV.

### Eco Assist

As standard is Honda’s Eco Assist – a visual coaching system that changes the colour of your speedometer to help you drive more efficiently. When you brake or accelerate heavily, the speedometer glows white. Drive in a smooth, controlled way and the display glows an encouraging green.

### ECON Mode

At the touch of a button, ECON Mode calibrates throttle response and air conditioning for maximum fuel economy.



\*The fuel consumption figure quoted is based on ADR81/02 combined test results for CR-V 2WD automatic.  
<sup>^</sup>Not available on 2WD models.

CR-V 4WD VTi-L with ADAS in Brilliant Sporty Blue Pearlescent.



# HONDA IS COMMITTED TO DESIGNING EVERY MODEL WITH EXCEPTIONAL SAFETY FEATURES. WE EVEN BUILT THE WORLD'S LARGEST OMNI-DIRECTIONAL CRASH FACILITY TO TEST OUR CARS MORE THOROUGHLY.

## Motion Adaptive Electric Power Steering (MAEPS)

When Vehicle Stability Assist is activated, Motion Adaptive Electric Power Steering automatically adjusts steering pressure, making it easier to steer in the stabilising direction.

## Pedestrian protection

Research has proven that sophisticated protection features, like windscreen wiper pivots that break away on impact and energy absorbing front guard mounts, dramatically improve a pedestrian's chance of survival if struck. So naturally they come standard on the CR-V.

## Real Time 4WD<sup>#</sup>

Some 4WD systems are constantly engaged and the result is wasted fuel, increased driving noise, and undue wear and tear to the powertrain. Honda's Real Time 4WD system senses when 4WD is needed and automatically switches to suit.

With a 5-star ANCAP safety rating, the CR-V is one of the safest SUVs on the road.

## Whiplash mitigating front seats

In the event of a collision, the seatback springs are optimised so that the seat will more equally absorb the occupant's impact, in a manner that can minimise the severity of a whiplash injury.

## SRS airbags

The CR-V's front airbags provide important protection for the driver and front passenger by optimising the airbag deployment to match the severity of a crash. They also help to minimise injuries that can sometimes be caused by the airbags themselves. Plus, front side and full-length curtain airbags provide an impressive line of lateral defence for all passengers.

## Advanced Compatibility Engineering (ACE)

The CR-V has been designed with an innovative body structure, engineered to absorb and deflect the force of a frontal collision away from the passenger compartment, improving the safety of every occupant.

## Automatic tensioning seatbelts

The moment you're involved in a collision, the same sensors that deploy the CR-V's airbags automatically retract the front seatbelts. You and your passenger are instantly pressed back safely into your seats.

## Vehicle Stability Assist (VSA)

By detecting and mitigating potential understeer or oversteer, this technology helps keep the CR-V on-course should the road turn treacherous. If needed, VSA automatically reduces engine power and manages brake pressure to individual wheels to help regain control.

## Active Cornering Lights (ACL)<sup>^</sup>

The Active Cornering Light illuminates the turn you are about to take from the moment you indicate or turn the steering wheel, reducing blind spots and helping you see potential hazards sooner.

## Anti-lock Braking System (ABS) with Brake Assist (BA) and Electronic Brake-force Distribution (EBD)

The CR-V comes armed with ABS for superb stopping power. When emergency braking is detected, BA applies maximum braking pressure and the EBD monitors and adjusts the brake force applied to each wheel for greater control and stability.



<sup>#</sup>Available on 4WD models only.  
<sup>^</sup>2WD and 4WD VTi-L models only.  
CR-V 4WD VTi-L shown in Alabaster Silver Metallic.



# Advanced Driver Assist System (ADAS).

## ▾ Adaptive Cruise Control\*

Adaptive Cruise Control (ACC) builds on the functionality of the conventional cruise control system, adjusting the CR-V's speed to maintain a consistent following distance.



1. You set your desired cruise control speed and distance between you and the car ahead.



2. When you approach a vehicle that is going slower than your set speed, a radar set behind the front grille detects the vehicle and automatically slows the CR-V to maintain a set distance.



3. Once the road ahead is deemed clear, the CR-V will automatically revert to your desired speed.

\*Cruise control is replaced with Adaptive Cruise Control (ACC) when optional ADAS is selected.

Honda has worked tirelessly to ensure the safest and most comfortable driving experience, no matter the situation. Nothing demonstrates this endless search for safety more than the intuitive nature of the Advanced Driver Assist System, optional on the CR-V 4WD VTi-L.

## ▸ Lane Keep Assist System

The Lane Keep Assist System (LKAS) uses a camera mounted on the windscreen that, when activated, 'senses' the line markings on the road. The system emits an audible warning if the vehicle starts to drift off course and automatically provides gentle steering correction to get you back on track, helping you to stay safely in the centre of your lane.



## ▾ Collision Mitigation Braking System

In the case of an impending collision, the Collision Mitigation Braking System (CMBS) warns you to take preventative action, and can mitigate the severity of an accident if impact is deemed inevitable.



1. If the vehicle in front of you is too close you are prompted to take preventative action with both a visual and audio warning.



2. Next, when the distance between you and the vehicle in front further reduces, the system provides a tactile warning by gently retracting the driver's seat belt.



3. Finally if an accident appears to be unavoidable, the system will apply strong braking to mitigate the severity of the impact. At this stage it will also retract both the driver and front passenger's seatbelts to help reduce possible injuries.

Images for illustrative purposes only. ACC, CMBS and LKAS are driver assist technologies and should not be used in place of safe driving practices. Drivers should continue to monitor the road ahead at all times.



Select  
your model



## 2WD VTi

The CR-V 2WD VTi comes standard with:

- 2.0 litre SOHC i-VTEC 4-cylinder engine
- 6-speed manual or 5-speed automatic transmission<sup>#</sup>
- Cruise control
- 17-inch alloy wheels with full-size spare
- Auto-off headlights
- LED Daytime Running Lights (DRLs)
- Variable intermittent wipers
- Power door mirrors with integrated turn indicators
- Remote keyless entry with jack knife key
- Power windows with driver one-touch auto up/down
- Roof rails
- Air conditioning with rear seat ventilation
- Intelligent Multi-Information Display (i-MID)
- Steering wheel-mounted cruise, audio and Bluetooth<sup>®</sup> controls<sup>°</sup>
- Display Audio touchscreen
- Multi-angle reversing camera
- Bluetooth<sup>®</sup> phone and audio connectivity<sup>°</sup>
- USB port (x2) and HDMI<sup>®</sup> port<sup>^</sup>
- 4 speakers, 2 tweeters
- ECON Mode and Eco Assist driver coaching
- Fabric seat trim
- Conversation mirror
- Tonneau cover
- SRS airbags: dual front, side and full-length curtain
- Advanced Compatibility Engineering (ACE)
- Anti-lock Braking System (ABS)
- Electronic Brake-force Distribution (EBD) with Brake Assist (BA)
- Hill Start Assist (HSA) – A/T only
- Motion Adaptive Electric Power Steering (MAEPS)
- Vehicle Stability Assist (VSA) with Traction Control
- Whiplash mitigating front seats



## 2WD VTi-S

Additional features over the 2WD VTi:

- 5-speed automatic transmission only
- Steering wheel-mounted gear shift paddles
- Smart entry with push button start
- Chrome exhaust pipe finisher
- Dusk-sensing automatic headlights
- Front fog lights
- Rain-sensing automatic wipers
- Front and rear parking sensors
- Chrome door handles
- Reverse auto tilt passenger door mirror
- Privacy glass
- Auto-dimming rear-view mirror
- Dual-zone climate control
- Leather-wrapped steering wheel
- Leather-wrapped gear shift knob
- LaneWatch
- Security alarm



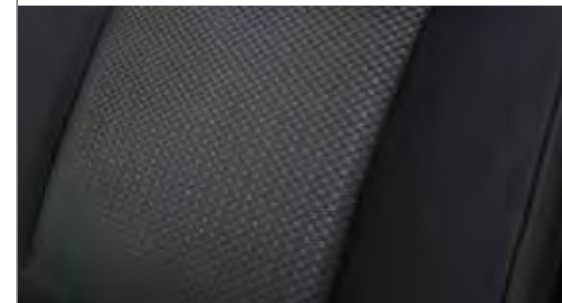
## 2WD VTi-L

Additional features over the 2WD VTi-S:

- 18-inch alloy wheels with full-size spare alloy
- High Intensity Discharge (HID) headlights with auto-levelling and washers
- Active Cornering Lights (ACL)
- Electric sunroof
- All windows with one touch auto up/down and key fob operation
- Leather-appointed seat trim<sup>†</sup>
- 8-way power driver seat with lumbar support and two position memory
- 4-way power passenger seat
- Heated front seats
- Display Audio with built-in navigation (DA+ with SUNA traffic updates)<sup>~</sup>



## Trims

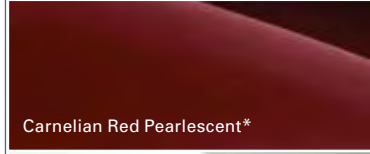
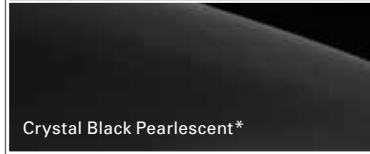
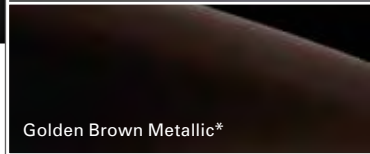
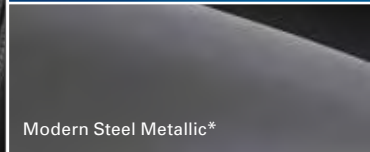
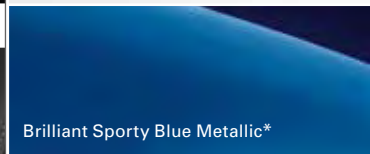


Black fabric seat trim – VTi and VTi-S models.



Black leather-appointed<sup>†</sup> seat trim – VTi-L models.

## Colours



<sup>#</sup>Automatic is an extra cost on CR-V 2WD VTi.  
<sup>°</sup>The Bluetooth word mark is owned by Bluetooth SIG, Inc. and use of such mark by Honda is under license. Compatibility and functionality may vary depending on the device.  
<sup>^</sup>Compatible with iPhone 5 (running iOS7) or newer. Operates only while the vehicle is stationary. Requires HDMI cable, Apple-approved lightning cable and Digital AV adapter (these items may be purchased separately from your Honda Dealer). Apple, iPhone, and Siri are trademarks of Apple Inc., registered in the U.S. and other countries. HDMI is a registered trademark of HDMI Licensing LLC in the United States and other countries. IOS is a trademark of Cisco in the U.S. and is used under license. All other trademarks are properties of their respective owners.  
<sup>†</sup>Leather seat trim includes non-leather material on selected, high impact surfaces.  
<sup>~</sup>SUNA is a registered trademark of Intelematics Pty Ltd. Coverage includes Melbourne, Sydney, Brisbane, Gold Coast, Adelaide, Perth and Canberra metropolitan areas. Refer to sunattraffic.com.au for full details.  
<sup>\*</sup>Metallic/Pearlescent paint additional cost.



Select  
your model



4WD VTi

The CR-V 4WD VTi comes standard with:

- 2.4 litre DOHC i-VTEC 4-cylinder engine
- Real Time 4WD
- 5-speed automatic transmission only
- Steering wheel-mounted gear shift paddles
- Cruise control
- 17-inch alloy wheels with full-size spare
- Auto-off headlights
- LED Daytime Running Lights (DRLs)
- Chrome exhaust pipe finisher
- Variable intermittent wipers
- Power door mirrors with integrated turn indicators
- Reverse auto tilt passenger door mirror
- Remote keyless entry with jack knife key
- Power windows with driver one-touch auto up/down
- Roof rails
- Air conditioning with rear seat ventilation
- Intelligent Multi-Information Display (i-MID)
- Steering wheel-mounted cruise, audio and Bluetooth® controls°
- Display Audio touchscreen
- Multi-angle reversing camera
- Bluetooth® phone and audio connectivity°
- USB port (x2) and HDMI®port ^
- 4 speaker, 2 tweeters
- ECON Mode and Eco Assist driver coaching
- Fabric seat trim
- Conversation mirror
- Tonneau cover
- SRS airbags: dual front, side and full-length curtain
- Advanced Compatibility Engineering (ACE)
- Anti-lock Braking System (ABS)
- Electronic Brake-force Distribution (EBD) with Brake Assist (BA)
- Hill Start Assist (HSA)
- Motion Adaptive Electric Power Steering (MAEPS)
- Vehicle Stability Assist (VSA) with Traction Control
- Whiplash mitigating front seats



4WD VTi-S

Additional features over the 4WD VTi:

- Smart entry with push button start
- Dusk-sensing automatic headlights
- Front fog lights
- Rain-sensing automatic wipers
- Front and rear parking sensors
- Chrome door handles
- Privacy glass
- Auto-dimming rear-view mirror
- Dual-zone climate control
- Leather-wrapped steering wheel
- Leather-wrapped gear shift knob
- LaneWatch
- Security alarm



4WD VTi-L

Additional features over the 4WD VTi-S:

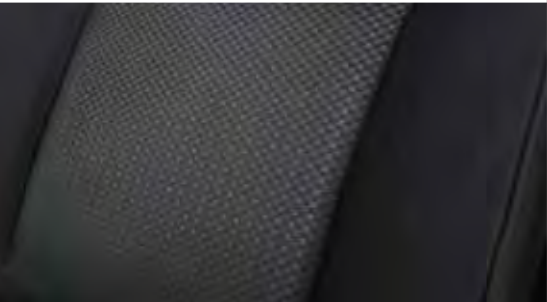
- 18-inch alloy wheels with full-size spare alloy
- High Intensity Discharge (HID) headlights with auto-levelling and washers
- Active Cornering Lights (ACL)
- Electric sunroof
- All windows with one touch auto up/down and key fob operation
- Leather-appointed seat trim†
- 8-way power driver seat with lumbar support and two position memory
- 4-way power passenger seat
- Heated front seats
- Display Audio with built-in navigation (DA+ with SUNA traffic updates)~

Optional Advanced Driver Assist System (ADAS) includes:

- Adaptive Cruise Control (ACC)‡
- Collision Mitigation Braking System (CMBS)
- Lane Keep Assist System (LKAS)



Trims



Black fabric seat trim – VTi and VTi-S models.

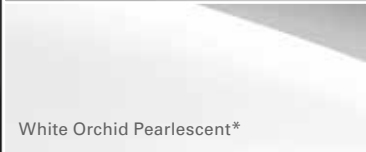


Black leather-appointed† seat trim – VTi-L models.

Colours



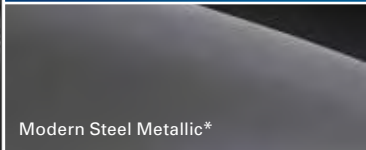
Alabaster Silver Metallic\*



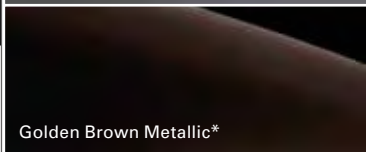
White Orchid Pearlescent\*



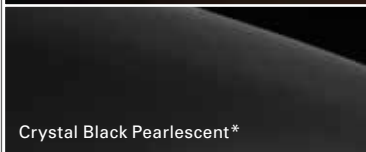
Brilliant Sporty Blue Metallic\*



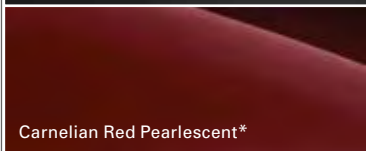
Modern Steel Metallic\*



Golden Brown Metallic\*



Crystal Black Pearlescent\*



Carnelian Red Pearlescent\*



Taffeta White

°The Bluetooth word mark is owned by Bluetooth SIG, Inc. and use of such mark by Honda is under license. Compatibility and functionality may vary depending on the device.

^Compatible with iPhone 5 (running iOS7) or newer. Operates only while the vehicle is stationary. Requires HDMI cable, Apple-approved lightning cable and Digital AV adapter (these items may be purchased separately from your Honda Dealer). Apple, iPhone, and Siri are trademarks of Apple Inc., registered in the U.S. and other countries. HDMI is a registered trademark of HDMI Licensing LLC in the United States and other countries. IOS is a trademark of Cisco in the U.S. and is used under license. All other trademarks are properties of their respective owners.

†Leather seat trim includes non-leather material on selected, high impact surfaces.

~SUNA is a registered trademark of Intelomatics Pty Ltd. Coverage includes Melbourne, Sydney, Brisbane, Gold Coast, Adelaide, Perth and Canberra metropolitan areas. Refer to sunattraffic.com.au for full details.

\*Metallic/Pearlescent paint additional cost.

‡Cruise control is replaced with Adaptive Cruise Control (ACC) when optional ADAS is selected.



CR-V Specifications

Description	2WD VTi	2WD VTi-S	2WD VTi-L	4WD VTi	4WD VTi-S	4WD VTi-L
ENGINE						
Engine type	SOHC i-VTEC In line 4-cylinder	SOHC i-VTEC In line 4-cylinder	SOHC i-VTEC In line 4-cylinder	DOHC i-VTEC In line 4-cylinder	DOHC i-VTEC In line 4-cylinder	DOHC i-VTEC In line 4-cylinder
Engine capacity	2.0L – 1997cc	2.0L – 1997cc	2.0L – 1997cc	2.4L – 2354cc	2.4L – 2354cc	2.4L – 2354cc
Compression ratio	10.6	10.6	10.6	10	10	10
Bore x Stroke (mm)	81 x 96.9	81 x 96.9	81 x 96.9	87 x 99	87 x 99	87 x 99
Fuel type (minimum recommended):						
- unleaded (91RON)	●	●	●	●	●	●
Fuel supply system:						
- Honda Programmed Multi-Point Fuel Injection	●	●	●	●	●	●
Drive By Wire throttle (DBW)	●	●	●	●	●	●
TRANSMISSION						
Manual Transmission (6-speed)	●	-	-	-	-	-
Automatic Transmission (5-speed with Grade Logic):	●	●	●	●	●	●
- with steering wheel-mounted paddles shifters	-	●	●	●	●	●
PERFORMANCE AND FUEL ECONOMY						
Maximum power (kW@rpm)	114 @ 6,500	114 @ 6,500	114 @ 6,500	140 @ 7,000	140 @ 7,000	140 @ 7,000
Maximum torque (Nm @rpm)	190 @ 4,300	190 @ 4,300	190 @ 4,300	222 @ 4,400	222 @ 4,400	222 @ 4,400
Fuel consumption (litres/100km)*:						
- combined (manual/auto)	7.8/7.7	-/7.7	-/7.7	-/8.7	-/8.7	-/8.7
- urban (manual/auto)	10.3/10.4	-/10.4	-/10.4	-/12	-/12	-/12
- extra urban (manual/auto)	6.4/6.2	-/6.2	-/6.2	-/6.7	-/6.7	-/6.7
CO <sub>2</sub> emissions (g/km)*:						
- combined (manual/auto)	182/179	-/179	-/179	-/201	-/201	-/201
Emission standard	ADR 79/04 (Euro 5)	ADR 79/04 (Euro 5)	ADR 79/04 (Euro 5)	ADR 79/04 (Euro 5)	ADR 79/04 (Euro 5)	ADR 79/04 (Euro 5)
CHASSIS						
Monocoque body construction	●	●	●	●	●	●
Suspension type:						
- MacPherson strut (front)	●	●	●	●	●	●
- double wishbone (rear)	●	●	●	●	●	●
Motion Adaptive Electric Power Steering (MAEPS)	●	●	●	●	●	●
Brakes:						
- ventilated disc (front)	●	●	●	●	●	●
- solid disc (rear)	●	●	●	●	●	●
EXTERIOR						
Door handles:						
- body coloured	●	-	-	●	-	-
- chrome	-	●	●	-	●	●
Door mirrors:						
- electrically adjustable	●	●	●	●	●	●
- integrated indicators	●	●	●	●	●	●
- body coloured	●	●	●	●	●	●
- electrically retractable	●	●	●	●	●	●
Exhaust pipe finisher	■	●	●	●	●	●
Rear window demister	●	●	●	●	●	●
Reverse auto tilt mirror (passenger side)	-	●	●	●	●	●
Roof rails	●	●	●	●	●	●
Sunroof	-	-	●	-	-	●
Wipers (front):						
- 2-speed variable intermittent	●	●	●	●	●	●
- rain-sensing function	-	●	●	-	●	●
Wiper (rear)	●	●	●	●	●	●
EXTERIOR LIGHTS						
Front fog lights	-	●	●	-	●	●
Headlight type:						
- Halogen bulb	●	●	-	●	●	-
- High Intensity Discharge (HID)	-	-	●	-	-	●
Headlights with:						
- auto-off coming home/leaving home function	●	●	●	●	●	●
- auto on/off dusk-sensing	-	●	●	-	●	●
- auto-levelling	-	-	●	-	-	●
- headlight washer	-	-	●	-	-	●
- LED Daytime Running Lights (DRLs) with light guide	●	●	●	●	●	●
- LED Active Cornering Lights (ACL)	-	-	●	-	-	●
Headlights on reminder	●	●	●	●	●	●
DRIVER AIDS						
Cruise control <sup>^</sup>	●	●	●	●	●	●
Eco Assist System (speedometer display)	●	●	●	●	●	●
Multi Information Display (MID):						
- odometer	●	●	●	●	●	●
- trip meter (A/B)	●	●	●	●	●	●
- average fuel economy	●	●	●	●	●	●
- range	●	●	●	●	●	●
- average speed	●	●	●	●	●	●
- elapsed time	●	●	●	●	●	●
- outside temperature display	●	●	●	●	●	●
- instant fuel economy	●	●	●	●	●	●

CR-V Specifications

Description	2WD VTi	2WD VTi-S	2WD VTi-L	4WD VTi	4WD VTi-S	4WD VTi-L
DRIVER AIDS CONT.						
Steering wheel-mounted controls:						
- audio	●	●	●	●	●	●
- Bluetooth® phone <sup>o</sup>	●	●	●	●	●	●
- cruise control <sup>^</sup>	●	●	●	●	●	●
- Multi Information Display (MID)	●	●	●	●	●	●
- Siri Eyes Free <sup>+</sup> mode	●	●	●	●	●	●
- voice tag access	●	●	●	●	●	●
Tachometer	●	●	●	●	●	●
COMFORT AND CONVENIENCE						
Air conditioning:						
- manual	●	-	-	●	-	-
- dual-zone climate control	-	●	●	-	●	●
Driver's footrest	●	●	●	●	●	●
Front console (with 2 cup holders)	●	●	●	●	●	●
Interior lighting:						
- cargo area light	●	●	●	●	●	●
- map lights	●	●	●	●	●	●
- glovebox light	●	●	●	●	●	●
Power windows with:						
- auto up/down function (driver)	●	●	-	●	●	-
- auto up/down function (all)	-	-	●	-	-	●
Rear-view mirror:						
- day/night	●	-	-	●	-	-
- auto-dimming	-	●	●	-	●	●
Remote central locking	●	●	●	●	●	●
Smart keyless entry with push start button	-	●	●	-	●	●
Tilt and telescopic steering column	●	●	●	●	●	●
Tonneau cover	●	●	●	●	●	●
Privacy glass (rear)	-	●	●	-	●	●
Driver and passenger sunvisor vanity mirror (illuminated)	●	●	●	●	●	●
SEATING AND INTERIOR						
Seats (front) with:						
- adjustable head restraints	●	●	●	●	●	●
- heating function	-	-	●	-	-	●
- driver seat manual height adjustment	●	●	-	●	●	-
- driver seat power adjustment (8-way)	-	-	●	-	-	●
- driver seat power lumbar support	-	●	●	-	-	●
- driver seat two-position memory	-	-	●	-	-	●
- passenger seat power adjustment (4-way)	-	-	●	-	-	●
Seats (rear) with:						
- centre fold down armrest with cup holders	●	●	●	●	●	●
- one-motion 60:40 split fold backrest	●	●	●	●	●	●
Seat trim material:						
- fabric	●	●	-	●	●	-
- leather-appointed <sup>†</sup>	-	-	●	-	-	●
Leather-wrapped gear shift knob	-	●	●	-	●	●
Leather-wrapped steering wheel	-	●	●	-	●	●
STORAGE						
Total beverage holders (x9)	●	●	●	●	●	●
Coat hanger (x1)	●	●	●	●	●	●
Seat back pocket:						
- passenger side	●	●	●	●	●	●
- driver side	●	●	●	●	●	●
Sun visor ticket holder (driver-side only)	●	●	●	●	●	●
MULTIMEDIA						
Accessory power outlet (12V):						
- front and centre	●	●	●	●	●	●
Display Audio featuring:						
- 7-inch full-colour capacitive touchscreen	●	●	●	●	●	●
- Bluetooth® phone and audio streaming <sup>o</sup>	●	●	●	●	●	●
- customisable wallpaper	●	●	●	●	●	●
- MP4 movie file play <sup>‡</sup>	●	●	●	●	●	●
- Siri Eyes Free <sup>+</sup> mode	●	●	●	●	●	●
- vehicle information (fuel economy, trip computer)	●	●	●	●	●	●
- built-in navigation with SUNA live traffic updates <sup>~</sup>	-	-	●	-	-	●
Speakers (x6) includes 2 tweeters	●	●	●	●	●	●
AM/FM radio	●	●	●	●	●	●
CD player, single disc (MP3/WMA compatible)	●	●	●	●	●	●
HDMI port	●	●	●	●	●	●
USB port (x2)	●	●	●	●	●	●
Speed-sensitive Volume Compensation (SVC)	●	●	●	●	●	●

● Standard feature. - Not available. ■ Accessory option. ▲ Available as part of the optional Advanced Driver Assist System Pack. \*The fuel consumption figures quoted are based on ADR81/02 test results. <sup>†</sup>Leather trim includes some non-leather materials in selected high impact areas. <sup>^</sup>Cruise control is replaced with Adaptive Cruise Control (ACC) when optional ADAS is selected. <sup>o</sup>The Bluetooth word mark is owned by Bluetooth SIG, Inc. and use of such mark by Honda is under license. Compatibility and functionality may vary depending on the device. <sup>+</sup>Requires compatible iOS7 device (iPhone 4S or newer). <sup>‡</sup>Compatible with iPhone 5 (running iOS7) or newer. Operates only while the vehicle is stationary. Requires HDMI cable, Apple-approved lightning cable and Digital AV adapter (these items may be purchased separately from your Honda Dealer). <sup>~</sup>SUNA is a registered trademark of Intelematics Pty Ltd. Coverage includes Melbourne, Sydney, Brisbane, Gold Coast, Adelaide, Perth and Canberra metropolitan areas. Refer to sunatrafic.com.au for full details. Apple, iPhone and Siri are trademarks of Apple Inc., registered in the U.S. and other countries. HDMI is a registered trademark of HDMI Licensing LLC in the United States and other countries. IOS is a trademark of Cisco in the U.S. and is used under license. All other trademarks are properties of their respective owners.



# CR-V Specifications

Description	2WD VTi	2WD VTi-S	2WD VTi-L	4WD VTi	4WD VTi-S	4WD VTi-L
ACTIVE SAFETY						
Anti-lock Braking System (ABS)	●	●	●	●	●	●
Advanced Driver Assist System (ADAS):						
- Adaptive Cruise Control (ACC)^	-	-	-	-	-	▲
- Collision Mitigation Braking System (CMBS)	-	-	-	-	-	▲
- Lane Keep Assist System (LKAS)	-	-	-	-	-	▲
Electronic Brake-force Distribution (EBD)	●	●	●	●	●	●
Emergency Brake Assist (EBA)	●	●	●	●	●	●
Emergency Stop Signal (ESS)	●	●	●	●	●	●
Hill Start Assist (HSA)	● (auto only)	●	●	●	●	●
Traction Control System (TCS)	●	●	●	●	●	●
Vehicle Stability Assist (VSA)	●	●	●	●	●	●
PASSIVE SAFETY						
Child Restraint Anchorages:						
- top tether (x3)	●	●	●	●	●	●
- ISO Fix	●	●	●	●	●	●
Head restraints (x5)	●	●	●	●	●	●
LaneWatch	-	●	●	-	●	●
Seatbelts (3 point):						
- pre-tensioner (front)	●	●	●	●	●	●
- Emergency Locking Retractors (ELR) - all seats	●	●	●	●	●	●
- Automatic Locking Retractors (ALR) - rear	●	●	●	●	●	●
Seatbelt reminder - driver and all passengers	●	●	●	●	●	●
Side impact protection	●	●	●	●	●	●
SRS Airbags:						
- front	●	●	●	●	●	●
- side	●	●	●	●	●	●
- full-length curtain	●	●	●	●	●	●
PARKING AIDS						
Parking sensors:						
- front	-	●	●	-	●	●
- rear	■	●	●	■	●	●
Multi-angle reversing camera (3 modes):						
- normal, wide, top-down	●	●	●	●	●	●
- dynamic or fixed guidelines	●	●	●	●	●	●
SECURITY						
Engine immobiliser	●	●	●	●	●	●
Security alarm system	-	●	●	-	●	●
DIMENSIONS						
Overall length (mm)	4585	4585	4585	4585	4585	4585
Overall width (mm)	1820	1820	1820	1820	1820	1820
Overall height (mm)	1685	1685	1685	1685	1685	1685
Wheelbase (mm)	2620	2620	2620	2620	2620	2620
Track (mm) - front/rear	1580	1580	1580	1580	1580	1580
Ground clearance - unladen (mm)	170	170	170	170	170	170
Head room (mm):						
- front	1013	1013	964	1013	1013	964
- 2nd row	980	980	980	980	980	980
Leg room (mm):						
- front	1050	1050	1050	1050	1050	1050
- 2nd row	972	972	972	972	972	972
Shoulder room (mm):						
- front	1489	1489	1489	1489	1489	1489
- 2nd row	1432	1432	1432	1432	1432	1432
Hip room (mm):						
- front	1384	1384	1384	1384	1384	1384
- 2nd row	1349	1349	1349	1349	1349	1349
Minimum turning radius at wheel centre (m)	5.5	5.5	5.5	5.5	5.5	5.5
WEIGHTS AND CAPACITIES						
Fuel tank capacity (L)	58	58	58	58	58	58
Tare mass (kg) - manual/auto	1423/1451	1464	1499	1548	1559	1595
Seating capacity	5	5	5	5	5	5
Towing Capacity (kg):						
- trailer with brakes	1500	1500	1500	1500	1500	1500
- trailer without brakes	600	600	600	600	600	600
- ball down force (kg)	100	100	100	100	100	100
WHEELS AND TYRES						
Alloy wheel	●	●	●	●	●	●
Full-size spare wheel	●	●	●	●	●	●
Tyre size	225/65 R17	225/65 R17	225/60 R18	225/65 R17	225/65 R17	225/60 R18
Wheel size	17 x 7J	17 x 7J	18 x 7J	17 x 7J	17 x 7J	18 x 7J

● Standard feature. - Not available. ^Cruise control is replaced with Adaptive Cruise Control (ACC) when optional ADAS is selected. ■ Accessory option. ▲ Available as part of the optional Advanced Driver Assist System Pack.

# ACCESSORIES BORN OF ENGINEERING, DESIGN AND THOUGHT.

The CR-V is a car that fits in with your life, so why not have it look that way too? With a huge range of Honda Genuine Accessory options available, you can make your CR-V uniquely yours.

Accessory Packs include:

- Modulo Sports Pack (VTi-S and VTi-L models only)
- Protection Pack
- Style Pack

Other accessories include:

- Bonnet protector\*
- Cigar lighter
- Headlight protector set\*
- Leather maintenance kit
- Rear park assist (VTi models only)
- Touch up paint
- Wheel lock nut set

\*Available March 2015. \*Rear door garnishes are not illuminated. All Honda Genuine Accessories installed at the time of retail sale of a new motor vehicle are covered by Honda's 3-year/100,000km warranty. If installed after retail use, they are covered for the remainder of the warranty or a minimum of 12 months – whichever is greater – provided the accessory is fitted only to the vehicle for which it was intended by Honda Motor Co.



Door visor set.



Side step set – Black finish.



Side step set – Metallic.



Chrome front bumper garnish.



Cargo step protector.



Chrome tailgate garnish.



Door sill garnish illuminated†.



Deluxe tailored mat set.



All-weather rubber mat set.





Cargo net.



Organiser box.



Pet guard.



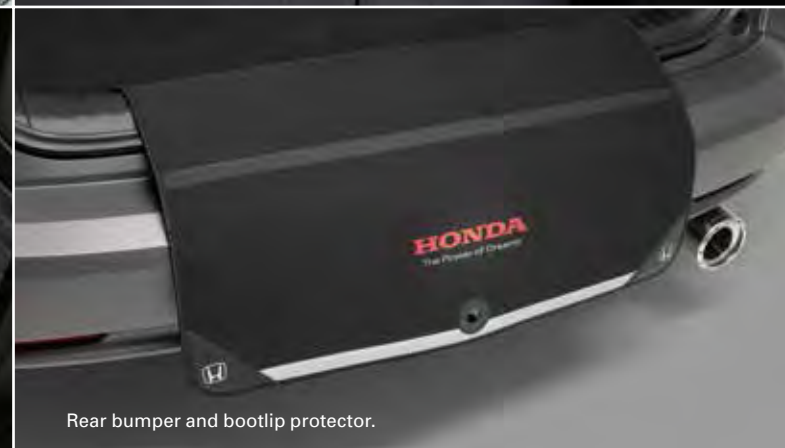
HondaLink cable kit†.



Cargo barrier.  
CR-V Series 1 shown.



Luggage area protector tray.



Rear bumper and bootlip protector.



Auto-dimming rear-view mirror (VTi models only).



Camping tent – sleeps 6 people.  
CR-V Series 1 shown.



Roof rack attachments\*  
- Bike attachment  
- Kayak attachment  
- Surfboard attachment  
- Ski/snowboard attachment



Front and rear accent lighting.



Fog lights set.  
(VTi models only.)



Roof rack cross bar set.  
75kg load capacity.



Ski/snowboard attachment\*.

# ACCESSORIES FOR PEOPLE GOING PLACES.

The CR-V is made for active people. So if you're ready for action, your CR-V will be too. Customise your CR-V so it's even more ready for adventure with a range of custom-made add-ons. Like the CR-V tent that fits snugly on to the back of your open boot space, so you're never cramped when you camp.

†Compatible with iPhone 5 (running iOS7) or newer. Operates only while the vehicle is stationary. Requires HDMI cable, Apple-approved lightning cable and Digital AV adapter (these items may be purchased separately from your Honda Dealer). Apple, iPhone, and Siri are trademarks of Apple Inc., registered in the U.S. and other countries. HDMI is a registered trademark of HDMI Licensing LLC in the United States and other countries. iOS is a trademark of Cisco in the U.S. and is used under license. All other trademarks are properties of their respective owners. \*In the interest of aerodynamics, Honda recommends the roof rack set be removed when not in use. See your Honda Dealer for advice regarding Honda Genuine Accessories. Pictured accessories are all sold separately. All Honda Genuine Accessories installed at the time of retail sale of a new motor vehicle are covered by Honda's 3-year/100,000km warranty. If installed after retail use, they are covered for the remainder of the warranty or a minimum of 12 months – whichever is greater – provided the accessory is fitted only to the vehicle for which it was intended by Honda Motor Co.



THE EXTERIOR OF THE CR-V  
IS A PERFECTLY DESIGNED  
PIECE OF AUTOMOTIVE  
INGENUITY. OF COURSE,  
THAT DOESN'T MEAN YOU  
CAN'T ADD A LITTLE MORE  
TO IT IF YOU PLEASE.



## Modulo Sports Pack.

With the Modulo Sports Pack, available as a full set or piece-by-piece, you can customise your CR-V so it's even sleeker, sportier, and 100% yours alone.

Available on VTi-S and VTi-L models:

- Front aero bumper
- Rear aero bumper<sup>^</sup>
- Rear tailgate spoiler
- Side step set (metallic)



▼ Additional accessories left to right:

- Alloy wheels 19-inch upsize\*
- Chrome Sports Grille\*
- Chrome lower door garnish
- Chrome door mirror garnish
- Chrome exhaust pipe finisher (2WD VTi only)



▲ CR-V 4WD VTi-S in Modern Steel Metallic shown with Modulo Sports Pack along with 19-inch upsize Alloy Wheels, Door Mirror Garnish set and Door Visor set.

<sup>^</sup>Rear aero bumper cannot be fitted together with a tow bar.  
<sup>\*</sup>Tyres sold separately. \*Chrome Sports Grille cannot be installed with optional ADAS. See your Honda Dealer for advice regarding Honda Genuine Accessories. Pictured accessories are all sold separately. All Honda Genuine Accessories installed at the time of retail sale of a new motor vehicle are covered by Honda's 3-year/100,000km warranty. If installed after retail use, they are covered for the remainder of the warranty or a minimum of 12 months – whichever is greater – provided the accessory is fitted only to the vehicle for which it was intended by Honda Motor Co.



You're never alone in a Honda.

Buy a CR-V and you'll be amazed at how well you'll be looked after.

The care starts with a 3-year/100,000km warranty and 6-year rust perforation warranty\*.

Plus Honda has a range of benefits that ensure your CR-V is as pleasurable to own as it is to drive.



- Dedicated Honda Care**

Servicing your CR-V at a local Honda Dealership will ensure you protect your investment and maximise its outstanding resale value. Dedicated Honda Care provides access to specialist diagnostic equipment and Honda Genuine Parts. There's also the advantage of factory-trained technicians with unparalleled knowledge of Honda products.
- Honda Warranty Plus†**

Purchase Honda Warranty Plus and your CR-V will be protected with no claim limits and no cost for labour and parts for 5 years or 140,000 kilometres (inclusive of New Vehicle Warranty). You'll also be entitled to 5 years' Premium Roadside Assist. Visit [honda.com.au/warranty](http://honda.com.au/warranty) for more information.
- Honda Financial Services°**

Honda cars have a reputation for quality, reliability and great value for money. Our Honda Financial Services products are no different. Competitively priced and packed full of unique features and extras, our comprehensive range of **insurance#** and **finance^** products make it easier to get your new Honda on the road sooner. For more information visit [honda.com.au/financialservices](http://honda.com.au/financialservices)
- Honda Merchandise**

Show your true colours with genuine Honda merchandise. For everything from apparel to travel goods, visit your local Honda Dealer or view the range at [honda.com.au/merchandise](http://honda.com.au/merchandise)

For more information visit [honda.com.au/cars](http://honda.com.au/cars) or Freecall 1800 804 954

\*Honda warranties apply where due care is exercised by the owner and the vehicle is maintained in accordance with the Owner's Warranty and Service Manual. Please visit [honda.com.au/warranty](http://honda.com.au/warranty) for full terms and conditions. †5-year/140,000km Warranty Plus is inclusive of 3-year/100,000km New Vehicle Warranty. Please refer to Honda's Warranty documentation for conditions at [honda.com.au/warranty](http://honda.com.au/warranty) °Honda Financial Services is used by Honda Australia Pty Limited to generally describe the insurance products issued under the Honda brand, and finance products issued under the trading name Honda Finance Solutions. Insurance products under the Honda brand are issued by Allianz Australia Insurance Limited ABN 15 000 122 850 AFSL 234708 (Allianz). Finance products are issued under the trading name Honda Finance Solutions by Macquarie Leasing Pty Limited ABN 38 002 674 982 (Australian Credit Licence No. 394925) (Macquarie). #Your Authorised Honda Dealer arranges this insurance as agent of the insurer Allianz. We do not provide advice on this insurance based on any consideration of your objectives, financial situation or needs. Before making a decision, please consider the relevant Product Disclosure Statement available from [www.honda.com.au/insurance](http://www.honda.com.au/insurance) ^Finance products are provided by Macquarie trading as Honda Finance Solutions, to approved applicants, subject to the satisfaction of assessment and other criteria. Terms, fees and charges apply. Full terms and conditions available on application.

CR-V 4WD VTi-L shown in Brilliant Sporty Blue Metallic.





JAZZ



CITY



CIVIC HATCH



CIVIC SEDAN



ACCORD



HR-V



CR-V



ODYSSEY

**HONDA**  
The Power of Dreams



Honda Australia Pty. Ltd.  
ACN 004 759 611 ABN 66 004 759 611  
95 Sharps Road, Tullamarine, Victoria, 3043. Freecall 1800 804 954 [honda.com.au/cars](http://honda.com.au/cars)



[facebook.com/HondaAustraliaCars](https://facebook.com/HondaAustraliaCars)



[twitter.com/Honda\\_Australia](https://twitter.com/Honda_Australia)



[youtube.com/HondaAustralia](https://youtube.com/HondaAustralia)



[pinterest.com/HondaCars](https://pinterest.com/HondaCars)



[instagram/Honda\\_Australia](https://instagram/Honda_Australia)

The specifications and major features listed herein are accurate as at the date of printing (July 2015/16YM). However, Honda Australia Pty. Ltd. reserves the right to change or modify specifications and major features at any time without prior notice. Due to ordering, shipping and freight factors, some colour, model, option and accessory availabilities may vary from time to time. Check with your Honda Dealer for current information. Automatic transmission available for an extra cost on 2WD VTi. Only Honda Genuine Accessories are made to fit Honda vehicles. The fuel consumption figures quoted in this brochure are based on ADR81/02 test results. You may experience different results depending on driving conditions and the condition of the vehicle. Honda warranties apply where due care is exercised by the owner and the vehicle is maintained in accordance with the vehicle's owner's manual. Please refer to Honda's warranty documentation for exclusions and conditions. Honda Australia Pty. Ltd. recommends careful examination of all official Honda warranty documentation before purchasing. This brochure is printed on HannoArt, a paper that is certified carbon neutral by the Carbon Reduction Institute (CRI) from seedling to printer. Made with Totally Chlorine Free (TCF) pulp which has been sourced from managed plantation forests. HannoArt is manufactured under the world's best practice ISO 14001 Environmental Management System. The pulp used is Process Chlorine Free and is manufactured by an ISO 14001 certified mill. CR-V VTi-L with ADAS shown in White Orchid Pearlescent on cover. HOD0856



LIMITED EDITION

CR-V



# The Limited Edition CR-V Diesel takes you further.



Introducing a life without limits: The Limited Edition Honda CR-V Diesel shares your spirit for adventure with innovative technology that gives you the flexibility and freedom to explore. The new 1.6L i-DTEC engine available on the 4WD CR-V, delivers 118kW of maximum power and 350Nm of torque without compromising on economy at just 5.9L/100km\*. Then there's the electronically controlled 4WD system that cleverly transfers a degree of power to the rear wheels if front wheel slipping is detected, providing more confidence-inspiring grip and stability. Add to this flexible 60:40 split fold seats, electric tailgate and push button start, and you're away – wherever away might be. Book your test drive today. For more information visit [honda.com.au/crvdiesel](http://honda.com.au/crvdiesel)



\*Fuel consumption figures quoted are based on ADR81/02 combined test results.

Limited Edition CR-V DTi-L in Passion Red Pearlescent shown.



# LIMITED EDITION



The Limited Edition CR-V DTi-L comes standard with:

- 1.6 litre DOHC i-DETEC diesel engine with turbo charger and intercooler
- 9 speed automatic transmission with paddle shifters
- 118kW @ 4000rpm and 350Nm @ 2000rpm
- 18-inch alloy wheels
- Cruise control
- Chrome door handles
- Dusk-sensing automatic headlights with auto-off function
- High Intensity Discharge (HID) headlights with auto-levelling and washers
- LED Active Cornering Lights (ACL)
- LED Daytime Running Lights (DRL)
- Front and rear fog lights
- Electric tailgate
- Parking sensors – front and rear
- Power door mirrors with integrated turn indicators
- Power windows with driver and all passengers auto up/down
- Privacy glass – rear
- Rain-sensing automatic wipers
- Rear wiper
- Roof rails
- Smart keyless entry with push button start
- Auto-dimming rear view mirror
- Dual-zone automatic climate control
- Eco Assist driver coaching (speedometer display)
- Heated front seats
- Leather-appointed seat trim\*
- 8-way power driver seat with power lumbar support and 2 position memory
- Passenger seat power lumbar support
- Leather-wrapped steering wheel
- Display Audio with built-in navigation (DA+ with SUNA traffic updates)~
- Bluetooth® phone and audio connectivity°
- Intelligent Multi Information Display (i-MID)
- Multi-angle reversing camera
- USB port (x2) and HDMI® port^
- 4 speakers, 2 tweeters
- Steering wheel-mounted cruise, audio and Bluetooth® controls°
- Tonneau cover
- Advanced Compatibility Engineering (ACE)
- Anti-lock Braking System (ABS)
- Deflation Warning System (DWS)
- Electronic Brake-force Distribution (EBD) with Brake Assist system (BA)
- Emergency Stop Signal (ESS)
- Hill Start Assist (HSA)
- Hill Descent Control (HDC)
- High-beam Support System (HSS)
- Motion Adaptive Electric Power Steering (MAEPS)
- Security alarm
- SRS airbags: dual front, side (front seats) and full-length curtain
- Vehicle Stability Assist (VSA) with Traction Control system
- Whiplash mitigating front seats

Alabaster Silver Metallic

White Orchid Pearlescent

Polished Metal Metallic

Passion Red Pearlescent

\*Leather-appointed seat trim includes some non-leather material on selected, high-impact surfaces.

~SUNA is a registered trademark of Intelematics Pty Ltd. Coverage includes Melbourne, Sydney, Brisbane, Gold Coast, Adelaide, Perth and Canberra metropolitan areas. Refer to [sunattraffic.com.au](http://sunattraffic.com.au) for full details.

°Requires compatible Bluetooth device. Compatibility and functionality will vary depending on the device. The Bluetooth word mark is owned by Bluetooth SIG, Inc. and use of such mark by Honda is under licence.

^Compatible with iPhone 5 (running iOS 7) or newer. Operates only while the vehicle is stationary. Requires HDMI cable and Digital AV adapter (these items may be purchased separately from your Honda Dealer). Apple, iPhone and Siri are trademarks of Apple Inc., registered in the U.S. and other countries. HDMI is a registered trademark of HDMI Licensing LLC in the United States and other countries. IOS is a trademark of Cisco in the U.S. and is used under licence. All other trademarks are properties of their respective owners. The specification and major features listed are accurate at date of printing (September 2015/16YM). Compatibility and functionality may vary between iPhones.

**EARTH DREAMS**  
TECHNOLOGY



**HONDA**  
The Power of Dreams

Honda Australia Pty. Ltd.  
ACN 004 759 611  
ABN 66 004 759 611  
95 Sharps Road, Tullamarine,  
Victoria, 3043.  
Freecall 1800 804 954  
[honda.com.au/cars](http://honda.com.au/cars)