

SERVICE MANUAL



STATIONARY STORAGE WATER HEATERS

CLASS-I

KGS15W6P-GDE, KGS15W6M-GDE,
KGS25W6P-GDE, KGS25W6M-GDE

CLASS-II

KGS15W5P , KGS15W5M
KGS25W5P, KGS25W5M

Please read this manual carefully to diagnose trouble correctly before offering service.
Record model name & serial number of the machine. Please quote this information when you require service.

INDEX

SR. NO	DESCRIPTION	PAGE NO
01	PRODUCT SPECIFICATIONS	02-03
02	MAIN PARTS, THEIR FUNCTIONS & SPECIFICATIONS	04
03	TROUBLE SHOOTING	05
04	EXPLODED VIEW	06-07
05	SERVICE SPARE PARTS LIST	08-10

PRODUCT SPECIFICATIONS

Class	CLASS-I			
Model	KGS15W6P-GDE	KGS15W6M-GDE	KGS25W6P-GDE	KGS25W6M-GDE
Type	Storage	Storage	Storage	Storage
Outside Body	Plastics	Metal	Plastics	Metal
Wattage (W)	2000	2000	2000	2000
Power Supply	230V AC, 50 Hz.			
Thermostat	Variable upto 72 ₊₃ 0C			
Thermal Cut Out	Set to operate at 92 ₊₂ 0C			
Fusible Plug	Set to operate at 99 ₊₂ 0C			
Inner Container	Tested at 12kg/cm ²			
Operating Pressure	Preset at 6-7kg/cm ¹			
PRV	NO			
VRV	NO			
MFV	YES			
Insulation	PUF /vermin Proof Glass Wool			
Heating Elements	Embeeded type Copper Sheated Tubular with Mineral Filling			

* At Kenstar improvement is continuous process, specification may change without any notice.

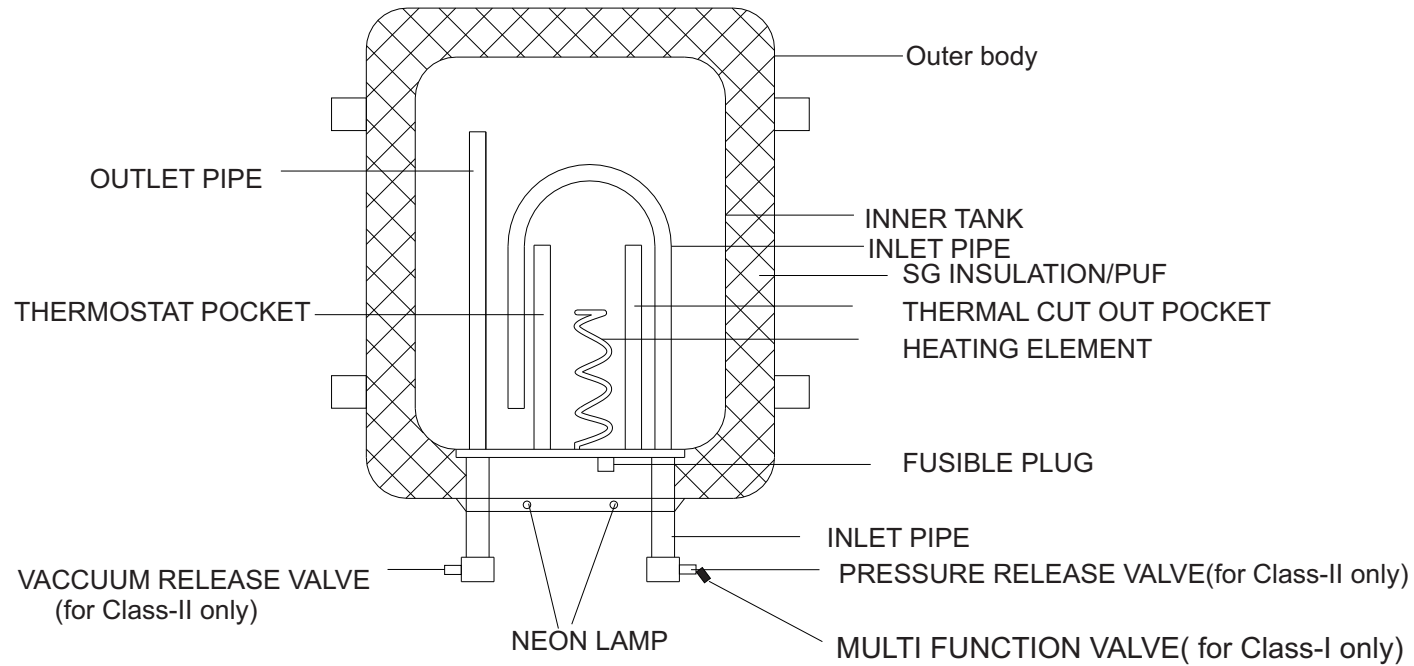
PRODUCT SPECIFICATIONS

Class	CLASS-II			
Model	KGS15W5P-GDE	KGS15W5M-GDE	KGS25W5P-GDE	KGS25W5M-GDE
Type	Storage	Storage	Storage	Storage
Outside Body	Plastics	Metal	Plastics	Metal
Wattage (W)	2000	2000	2000	2000
Power Supply	230V AC, 50 Hz.			
Thermostat	Preset at 72 \pm 3 0C			
Thermal Cut Out	Set to operate at 92 \pm 2 0C			
Fusible Plug	Set to operate at 99 \pm 2 0C			
Inner Container	Tested at 7kg/cm ²			
Operating Pressure	Set to operate at 3.8kg/cm ¹			
PRV	YES			
VRV	YES			
MFV	NO			
Insulation	PUF /Vermin Proof Glass Wool			
Heating Elements	Embeeded type Copper Sheated Tubular with Mineral Filling			

* At Kenstar improvement is continuous process, specification may change without any notice.

MAIN PARTS, THEIR FUNCTIONS & SPECIFICATIONS

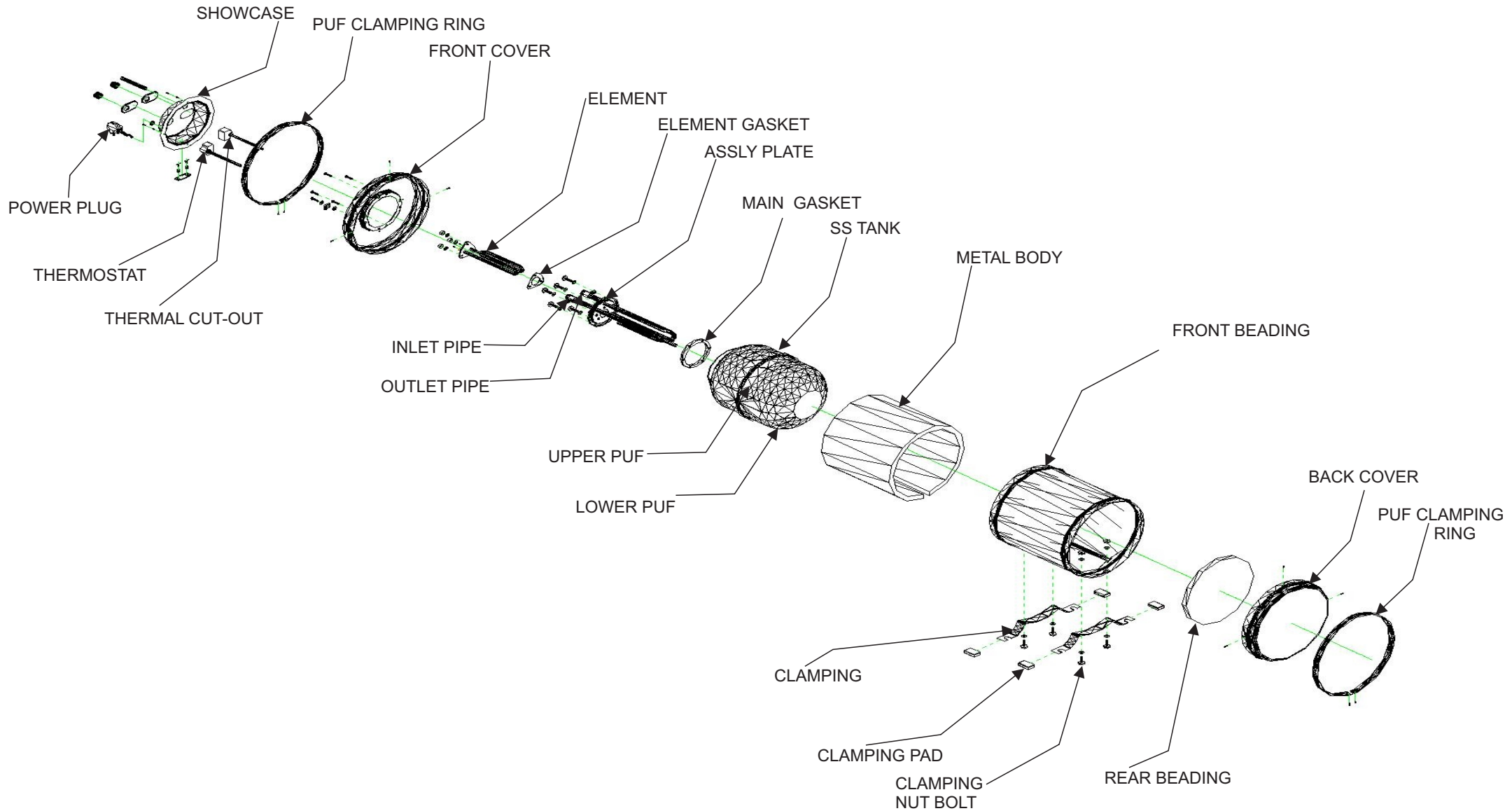
CLASS-I & II



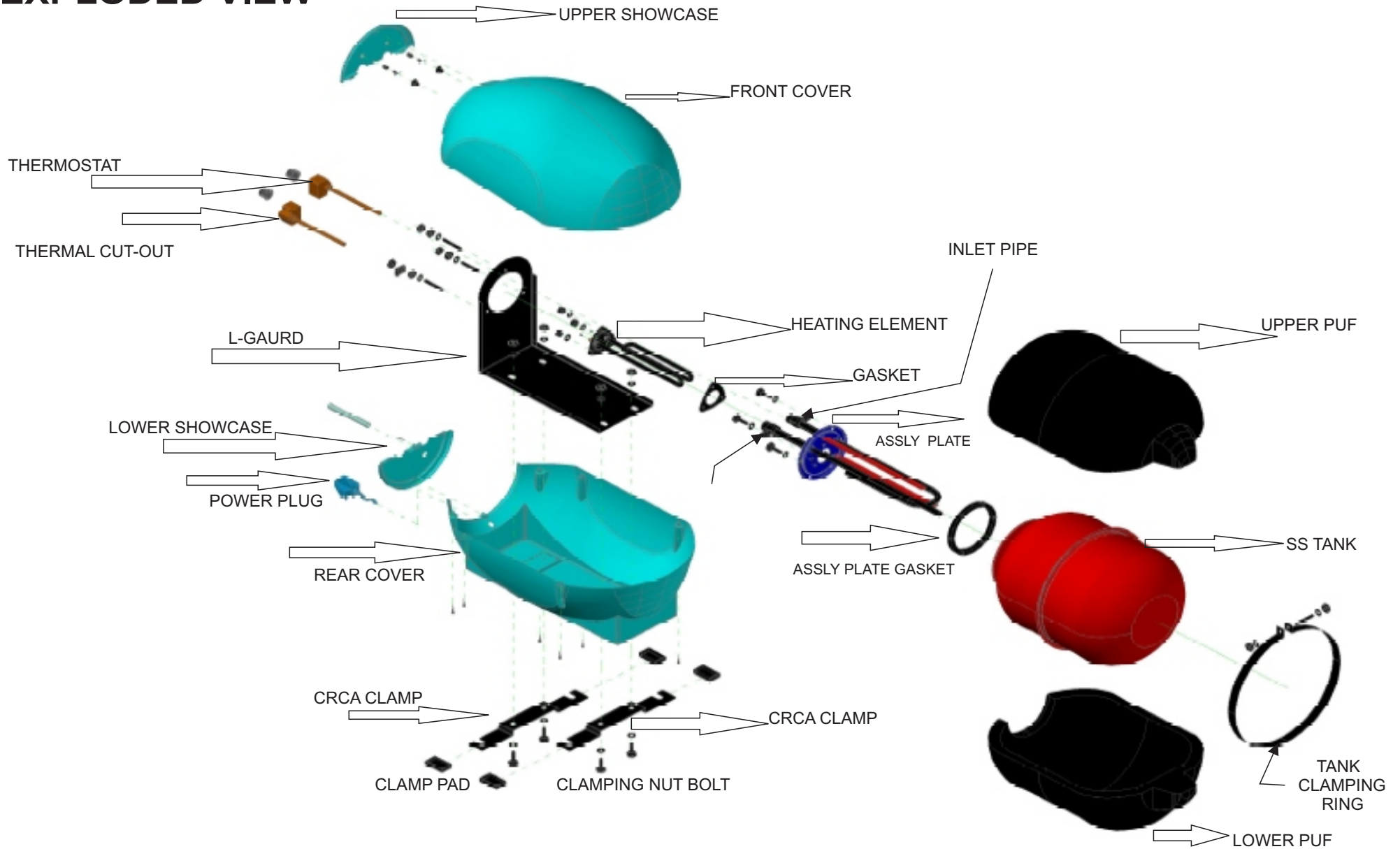
TROUBLE SHOOTING

S. NO.	DEFECTS	POSSIBLE ACTION	ACTION TAKEN
1	GREEN LAMP NOT GLOWING	MAY BE DUE TO THE DEFFECT OF LAMP & THERMOSTAT CHECK BOTH.	REPLACE THE DEFECTIVE PARTS
2	ONLY RED LAMP GLOWS	THERMOSTAT NOT WORKING	REPLACE THE THERMOSTAT
3	SPARKING INSIDE THE WATER HEATER	THIS HAPPEN DUE TO THE LOOSE ELECTRIC CONNECTION AT HEATING ELEMENT	TIGHTEN THE ELECTRIC CONNECTIONS THEN START THE WATER HEATER.
4	LEAKAGE	FIRST CHECK THE APPARATUS PLATE AT HEATING ELEMENT, GASKET & MAIN GASKET THEN CHECK THE WATER TANK.	IF THERE IS LEAKAGE CHANGE RESPECTIVE ONE
5	NO HOT WATER	IF GREEN LIGHT GLOWS & NO HOT WATER IT MEANS ELEMENT PROBLEM.	REPLACE THE HEATING ELEMENT
6			
7			

EXPLODED VIEW



EXPLODED VIEW



Spare Part List

KGT03W1P	WATER HEATER,3L INSTANT,KGT03W1P
1 100046036	MAIN BODY-3LTR,ABS,KGT03W1P
1 100046037	CLAMP,LEG,KGT03W1P
1 100046038	TANK,SS 304, 1 LTR,KGT03W1P
1 100046039	INSTRUCTION MANUAL,KGT03W1P
1300007383	BOX,PACKAGING,5PLY,INNER,PRINTD,KGT03W1P
1300007384	BUFFER THERMOCOL,KGT03W1P
1300007385	BOX,PACKAGING,5 PLY,OUTER,KGT03W1P

KGT03W1P	WATER HEATER,1L INSTANT,KGT01W1P
1 100046066	MAIN BODY,ABS,KGT01W1P
1 100046067	CLAMP,LEG,KGT01W1P
1 100046068	TANK,SS 304, 1 LTR,KGT01W1P
1 100046069	PLATE,APPARATUS,BRASS,2.1MM,KGT01W1P
1 100046070	PIPE,THERMOSTAT 7",COPPER,KGT01W1P
1 100046071	PIPE,CUT OUT 7",COPPER,KGT01W1P
1 100046072	PIPE,OUTER 4",IN+OUT,BRASS,KGT01W1P
1 100046073	PIPE,U & I,BRASS,23",KGT01W1P
1 100046074	NOZZLE,BRASS,KGT01W1P
1 100046075	PIPE,OUTSIDE,FUSABLE,PVC,KGT01W1P
1 100046076	WASHER,FIBER,RUBBER,KGT01W1P
1 100046077	REDUCER,BRASS,KGT01W1P
1 100046078	VALVE,SAFETY,BRASS,KGT01W1P
1 100046079	ROD,WELDING,COPPER,KGT01W1P
1 100046080	THERMOSTAT, 11" / 7",KGT01W1P
1 100046081	THERMAL CUT OUT 7",KGT01W1P
1 100046082	CABLE,PVC,EXTERNAL,48/20,KGT01W1P
1 100046083	WIRE,PVC,INTERNAL,48/20,KGT01W1P

1 100046084	NEON LAMP,RED,KGT01W1P
1 100046085	NEON LAMP,GREEN,KGT01W1P
1 100046086	ELEMENT,HEATING,3 KW,KGT01W1P
1 100046087	SLEEVE,FIBRE GLASS,KGT01W1P
1 100046088	THIMBLES,SMALL,KGT01W1P
1 100046089	THIMBLES,BIG,6MM,KGT01W1P
1 100046090	BOLT,6 x 25,MS,KGT01W1P
1 100046091	WASHER,M6,KGT01W1P
1 100046092	WASHER,SPRING,M6,KGT01W1P
1 100046093	NUT,6 MM,MS,KGT01W1P
1 100046094	SCREW,6 X 16,SS,KGT01W1P
1 100046095	BOLT,HEX,M6 X8,SS,KGT01W1P
1 100046096	STUD,SS,M6 x 18,KGT01W1P
1 100046097	WASHER,SS,M6,KGT01W1P
1 100046098	NUT,HEX,M6,SS,KGT01W1P
1 100046099	WASHER,SPRING,,SS,KGT01W1P
1 100046100	GASKET,127 MM,EPDM,RUBBER,KGT01W1P
1 100046101	PIPE,PVC,1/2",THREAD,KGT01W1P
1 100046102	CAP,PVC,KGT01W1P
1 100046103	CLIP,CORD,KGT01W1P
1 100046104	GROMMET,CORD,KGT01W1P
1 100046105	ELEMENT,EPDM,RUBBER,KGT01W1P
1 100046106	GLASS,WOOL,KGT01W1P
1 100046107	STICKER,LOGO,KGT01W1P
1 100046108	STICKER,TRANSFERANT,JACUZI,KGT01W1P
1 100046109	STICKER,ISI,AL FOIL,KGT01W1P
1 100046110	STICKER,SPECIFICATION,AL FOIL,KGT01W1P
1 100046111	STICKER,BUBBLES,KGT01W1P
1 100046112	INSTRUCTION MANUAL,KGT01W1P
1300007398	CARTON,INNER,PRINTD,5PLY,KGT01W1P
1300007399	BUFFER THERMOCOL,KGT01W1P
1300007400	CARTON,OUTER,5 PLY,KGT01W1P

Spare Part List

KGS15W4P	WATER HEATER, 15L, 4*, JACUZZI, KGS15W4P
1 100046040	MAIN BODY-15LTR, ABS, KGS15W4P
1 100046121	CLAMP, LEG, KGS15W4P
1 100046122	TANK, SS 304, 15 LTR, KGS15W4P
1 100046123	PLATE, APPARATUS, BRASS, 2.3MM, KGS15W4P
1 100046124	PIPE, THERMOSTAT 11", COPPER, KGS15W4P
1 100046125	PIPE, CUT OUT 11", COPPER, KGS15W4P
1 100046126	PIPE, U & I, BRASS, 4 SOOT ", KGS15W4P
1 100046127	NOZZLE, BRASS, 2 SOOT, KGS15W4P
1 100046128	VALVE, VACUUM RELEASE, KGS15W4P
1 100046129	THERMOSTAT, 11", KGS15W4P
1 100046130	THERMAL CUT OUT, 11 INCH, KGS15W4P
1 100046131	MAINS CORD, PVC, 3CORE, 32/20, KGS15W4P
1 100046132	WIRE, PVC, 1 CORE, 32/20, KGS15W4P
1 100046133	ELEMENT, HEATING, 2 KW, KGS15W4P
1 100046134	SCREW 6x13 SS, KGS15W4P
1 100046135	SCREW 6x95 SS, KGS15W4P
1 100046136	SCREW 4x12 SS, KGS15W4P
1 100046137	PUFF, INSULATION, KGS15W4P
1 100046138	INSTRUCTION MANUAL, KGS15W4P
1300007386	BOX, PACKAGING, 5PLY, PRINTED, KGS15W4P
1300007387	BUFFER THERMOCOL, KGS15W4P
1300007388	BOX, PACKAGING, 5PLY, PRINTD, KGS15W4M
1300007389	BUFFER THERMOCOL, KGS15W4M

KGS15W4M	WATER HEATERE, 15L, 4*, HOT SPRING, KGS15W4
1 100046139	MAIN BODY-15LTR, C.R.C.A., KGS15W4M
1 100046140	COVER END, CRC, 12.5in, KGS15W4M
1 100046141	BRACKET, LEG CLAMP, CRC, KGS15W4M
1 100046142	PUFF, INSULATION, KGS15W4M
1 100046143	INSTRUCTION MANUAL, KGS15W4M

KGS25W4P	WATER HEATER, 25L, 4*, JACUZZI, KGS25W4P
1 100046144	MAIN BODY-25 LTR, ABS, KGS25W4P
1 100046145	CLAMP, LEG, KGS25W4P
1 100046146	TANK, SS 304, 25 LTR, KGS25W4P
1 100046147	PIPE, U & I, BRASS, 4 SOOT ", KGS25W4P
1 100046148	NOZZLE, BRASS, 2 SOOT, KGS25W4P
1 100046149	PUFF, INSULATION, KGS25W4P
1 100046150	INSTRUCTION MANUAL, KGS25W4P
1300007410	BOX, PACKAGING, 5PLY, PRINTD, KGS25W4P
1300007411	BUFFER THERMOCOL, KGS25W4P

KGS25W4M	WATER HEATERE, 25L, 4*, HOT SPRING, KGS25W4M
1 100046151	MAIN BODY-25LTR, C.R.C.A., KGS25W4M
1 100046152	COVER END, WITH COV SH, 12.5", KGS25W4M
1 100046153	BRACKET, LEG CLAMP, CRC, KGS25W4M
1 100046154	PUFF, INSULATION, KGS25W4M
1 100046155	INSTRUCTION MANUAL, KGS25W4M
1300007412	BOX, PACKAGING, 5PLY, PRINTD, KGS25W4M
1300007413	BUFFER THERMOCOL, KGS25W4M

Spare Part List : Only for Class-1 model.

Material Code	DESCR	Plant
1100065862	TANK,SS,KGS 15W6M-GDE/KGS 15W6P-GDE	S001
1100065863	TANK,SS,KGS 25W6M-GDE/KGS 25W6P-GDE	S001
1100065864	APARATUS PLATE, KGS 25W6P-GDE,15-25L-P/M	S001
1100065865	MFV, KGS25W6P-GDE, 15-25L-P/M	S001
1100065866	KNOB SET,EXTERNA,KGS25W6P-GDE,15-25L-P/M	S001
1100065867	ISI, KGS25W6P-GDE, ALL MODEL	S001
1100065868	STICKER BEE,KGS15W6P-GDE	S001
1100065869	STICKER BEE,KGS15W6M-GDE	S001
1100065870	STICKER BEE,KGS25W6P-GDE	S001
1100065911	STICKER BEE,KGS25W6M-GDE	S001
1100065912	PLATE RATING, KGS25W6P-GDE	S001
1100065913	PLATE RATING, KGS15W6P-GDE	S001
1100065914	PLATE RATING, KGS25W6M-GDE	S001
1100065915	PLATE RATING,KGS15W6M-GDE	S001
1100065916	MANUAL, KGS15W6P-GDE	S001
1100065917	STICKER CLASS-1, KGS15W6P-GDE	S001