

REFRIGERATOR MANUFACTURER
Turbo air

Turbo Air Speed up the Pace of Innovation

CAUTION!
PLEASE KEEP POWER
SWITCH ON BEFORE
OPERATING THIS EQUIPMENT

Salad Table Refrigerator & Freezer Service Manual

Please read this manual completely before attempting to install or operate this equipment!

Sandwich Salad Unit

JBT-36

JBT-48

JBT-60

JBT-72

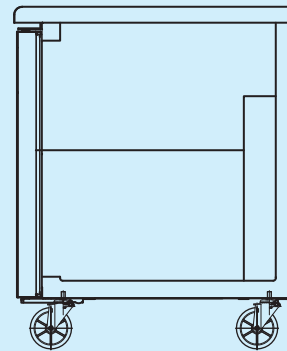
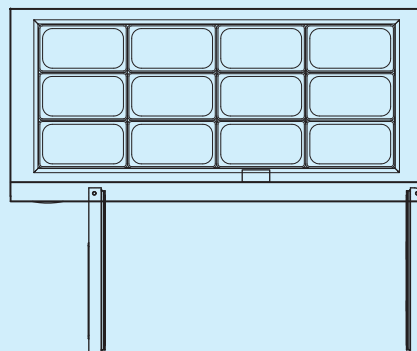


TABLE OF CONTENTS

1. EXPLODED VIEW

1-1. JBT-36 EXPLODED VIEW

1-2. JBT-48 EXPLODED VIEW

1-3. JBT-60 EXPLODED VIEW

1-4. JBT-72 EXPLODED VIEW

2. WIRING DIAGRAMS

3. MAIN PART

4. MAIN COMPONENTS

5. PARTS LIST

6. TEMPERATURE CONTROL INSTRUCTION

7. REPLACEMENT OF MAIN COMPONENTS

7-1. REPLACING DOOR

7-2. REFRIGERATION COMPARTMENT PARTS

7-3. COMPRESSOR COMPARTMENT PARTS

7-4. DISASSEMBLE Refrigerator Compartment

7-5 Replacing FRONT PCB

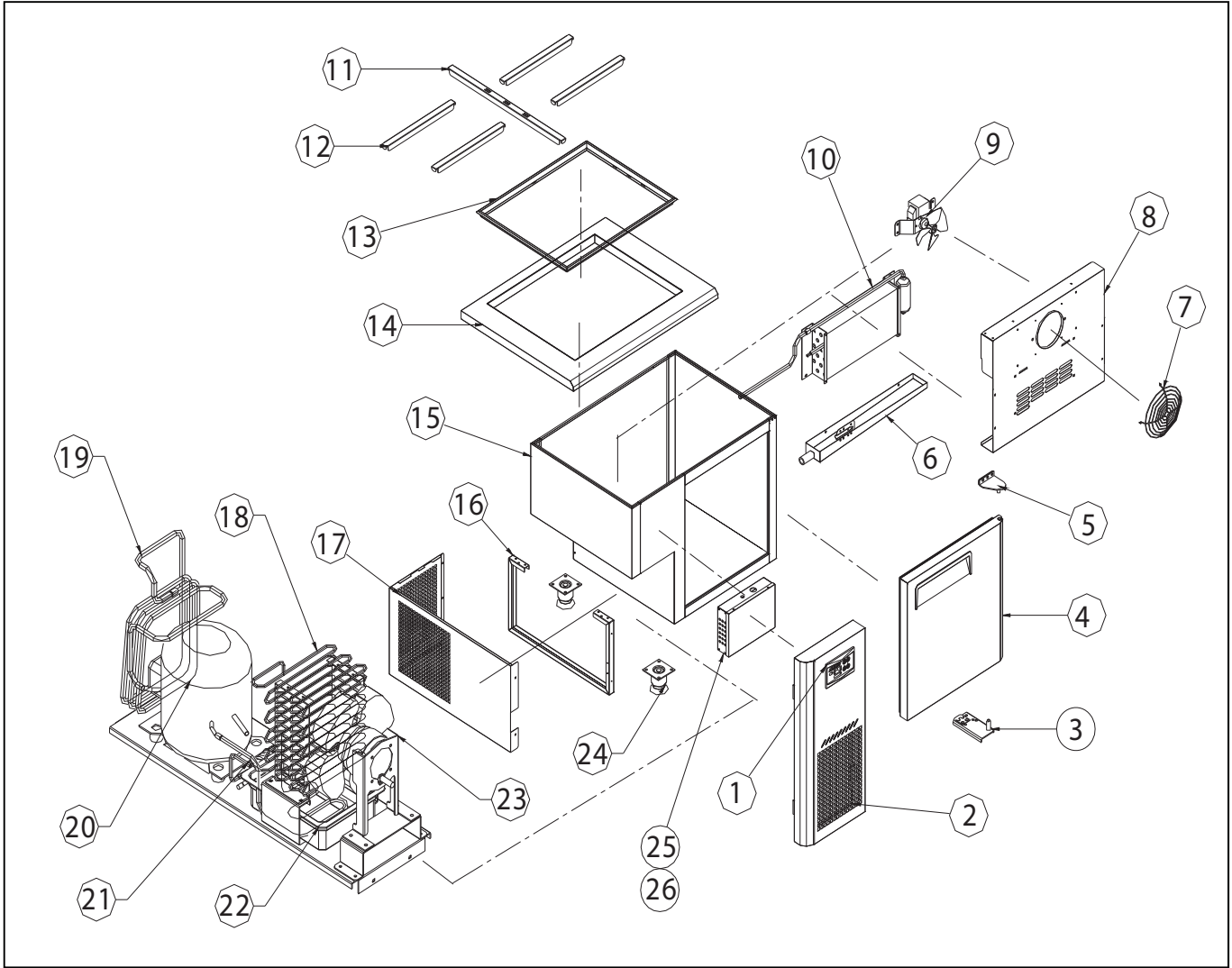
7-6 How to use Display PCB

7-7 Replace Main PCB

7-8 Replacing cabinet frame heater (and/or) mullion heater

1. EXPLODED VIEW

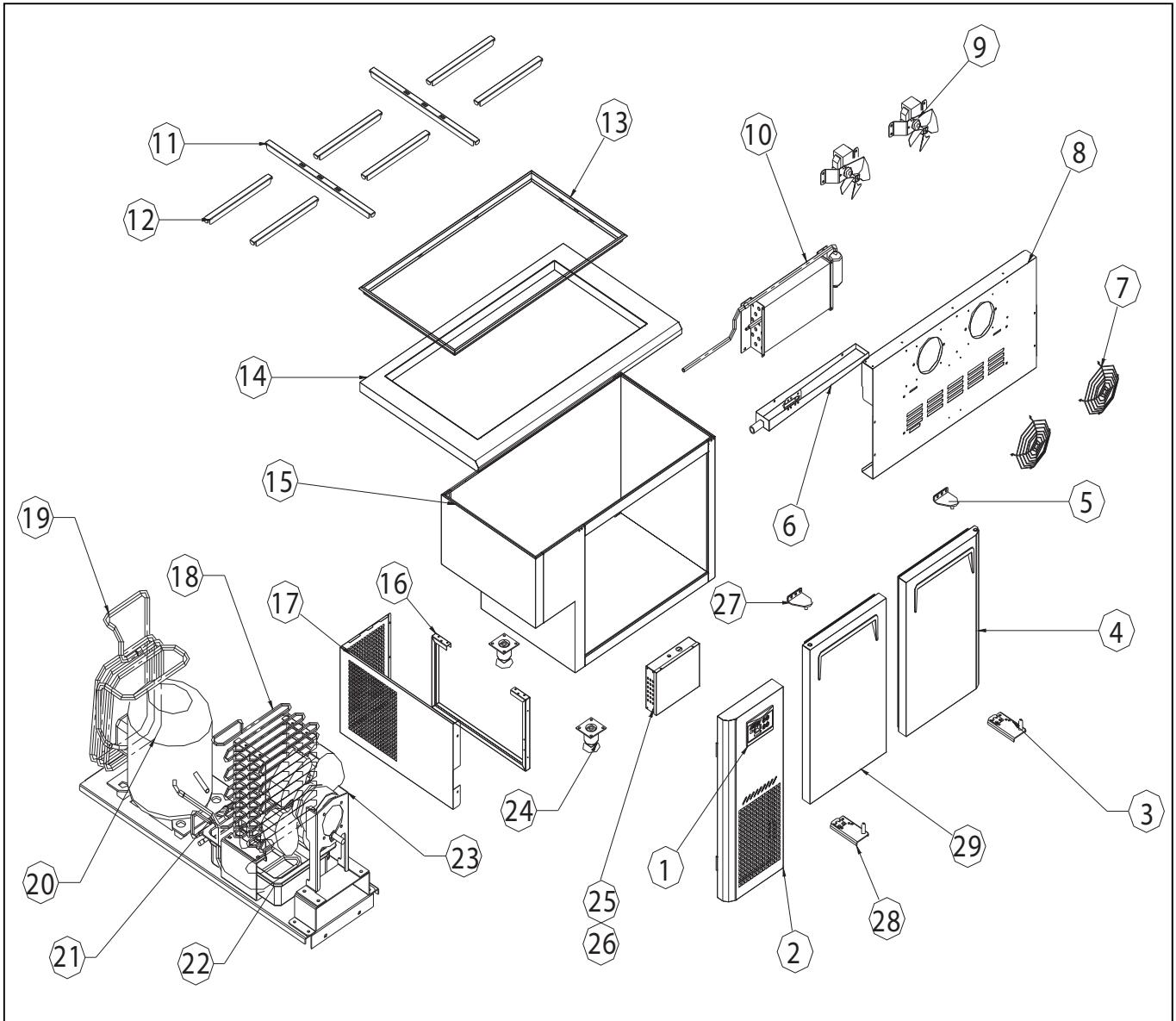
1-1. JBT-36 EXPLODED VIEW



Part Name

1	Display PCB	12	Pan Guide S	23	Assy Condenser Motor
2	Assy Front Cover	13	Assy Pan Support	24	Caster
3	Bottom Hinge R	14	Assy Counter Top	25	Trans
4	Assy Door R_ 900	15	Assy Cabinet	26	Main PCB
5	Top Hinge R	16	Unit Reinforce		
6	Drain Guide	17	Unit Side Cover		
7	Fan Cover Wire	18	Condenser		
8	Evap Duct Cover	19	Suction Pipe		
9	Assy Evap Fan Motor	20	Comprssor		
10	Evaporator	21	Dryer		
11	Pan Guide	22	Drian Pan		

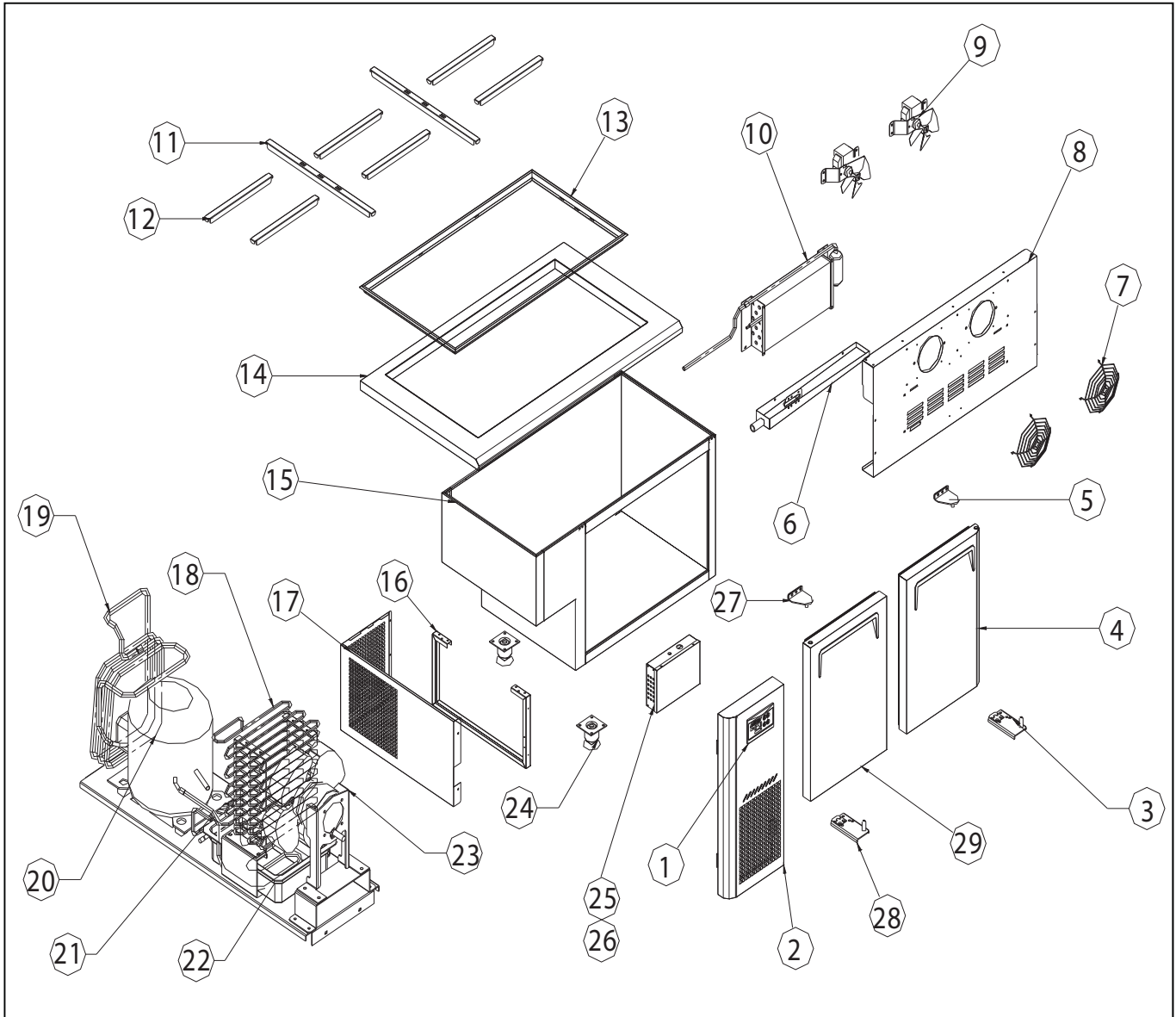
1-2. JBT-48 EXPLODED VIEW



Part Name

1	Display PCB	12	Pan Guide S	23	Assy Condenser Motor
2	Assy Front Cover	13	Assy Pan Support	24	Caster
3	Bottom Hinge R	14	Assy Counter Top	25	Trans
4	Assy Door R	15	Assy Cabinet	26	Main PCB
5	Top Hinge R	16	Unit Reinforce	27	Top Hinge L
6	Drain Guide	17	Unit Side Cover	28	Bottom Hinge L
7	Fan Cover Wire	18	Condenser	29	Assy Door L
8	Evap Duct Cover	19	Suction Pipe		
9	Assy Evap Fan Motor	20	Comprssor		
10	Evaporator	21	Dryer		
11	Pan Guide	22	Drian Pan		

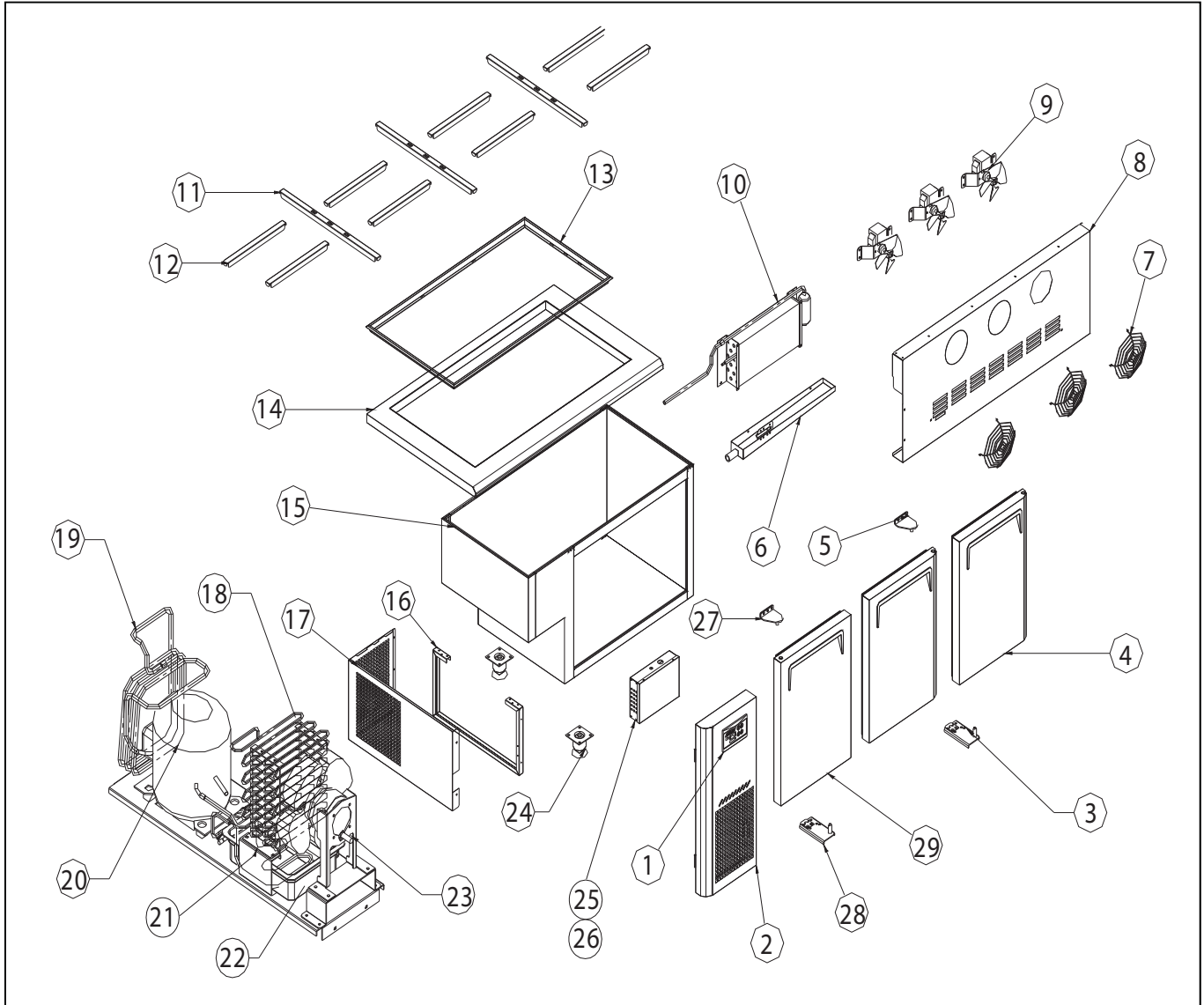
1-3. JBT-60 EXPLODED VIEW



Part Name

1	Display PCB	12	Pan Guide S	23	Assy Condenser Motor
2	Assy Front Cover	13	Assy Pan Support	24	Caster
3	Bottom Hinge R	14	Assy Counter Top	25	Trans
4	Assy Door R	15	Assy Cabinet	26	Main PCB
5	Top Hinge R	16	Unit Reinforce	27	Top Hinge L
6	Drain Guide	17	Unit Side Cover	28	Bottom Hinge L
7	Fan Cover Wire	18	Condenser	29	Assy Door L
8	Evap Duct Cover	19	Suction Pipe		
9	Assy Evap Fan Motor	20	Comprssor		
10	Evaporator	21	Dryer		
11	Pan Guide	22	Drian Pan		

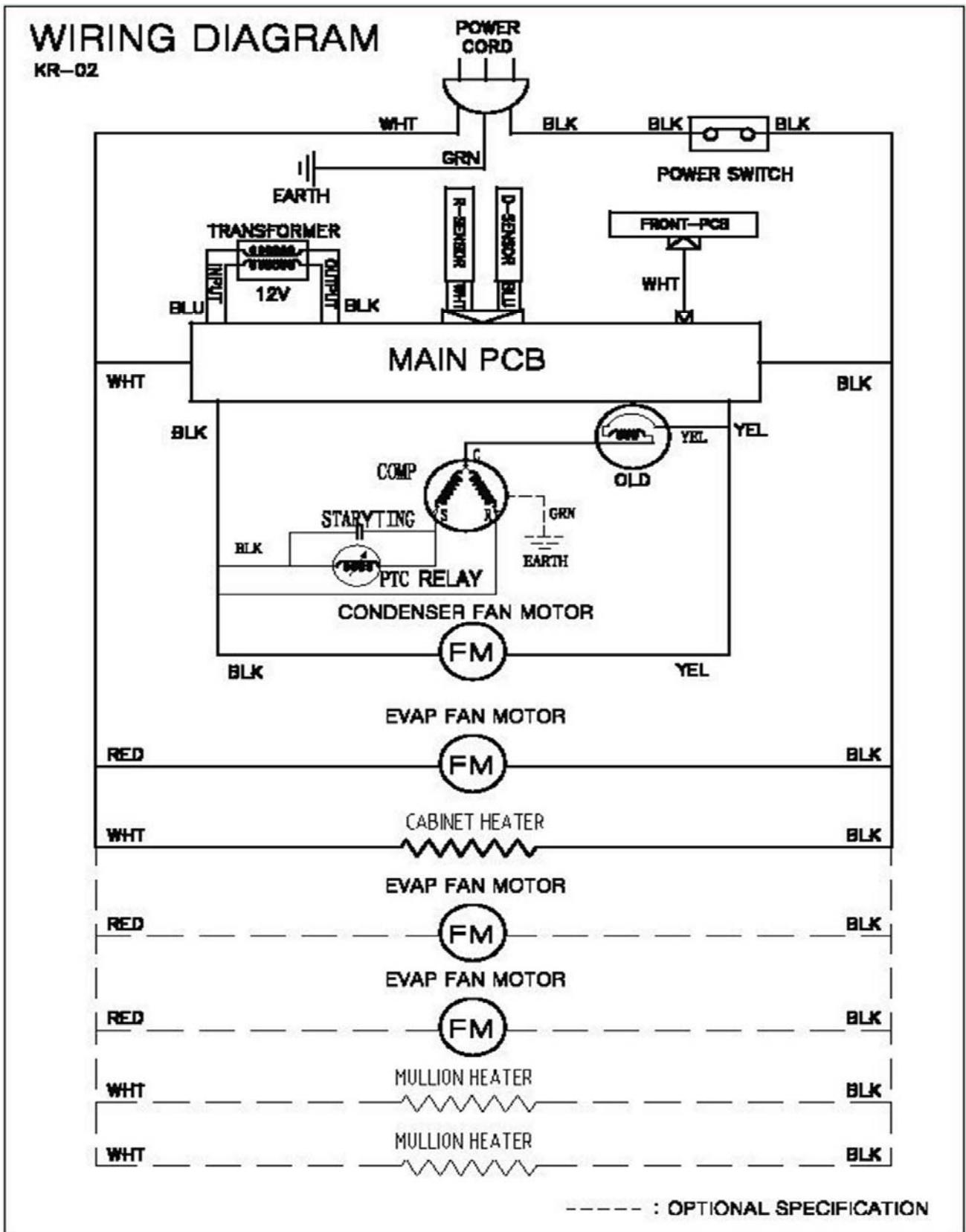
1-4. JBT-72 EXPLODED VIEW



Part Name

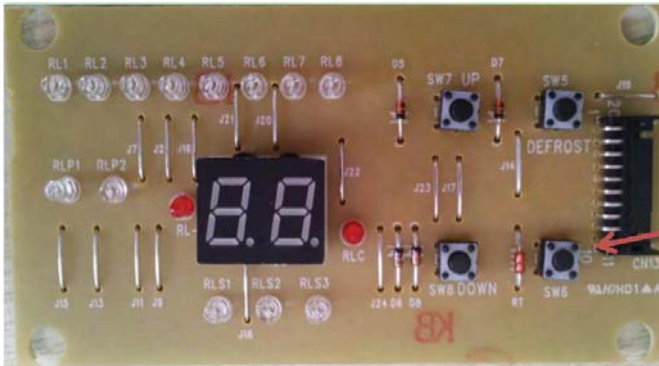
1	Display PCB	12	Pan Guide S	23	Assy Condenser Motor
2	Assy Front Cover	13	Assy Pan Support	24	Caster
3	Bottom Hinge R	14	Assy Counter Top	25	Trans
4	Assy Door R	15	Assy Cabinet	26	Main PCB
5	Top Hinge R	16	Unit Reinforce	27	Top Hinge L
6	Drain Guide	17	Unit Side Cover	28	Bottom Hinge L
7	Fan Cover Wire	18	Condenser	29	Assy Door L
8	Evap Duct Cover	19	Suction Pipe		
9	Assy Evap Fan Motor	20	Comprssor		
10	Evaporator	21	Dryer		
11	Pan Guide	22	Drian Pan		

2. WIRING DIAGRAMS



3.MAIN PART

DISPLAY PCB



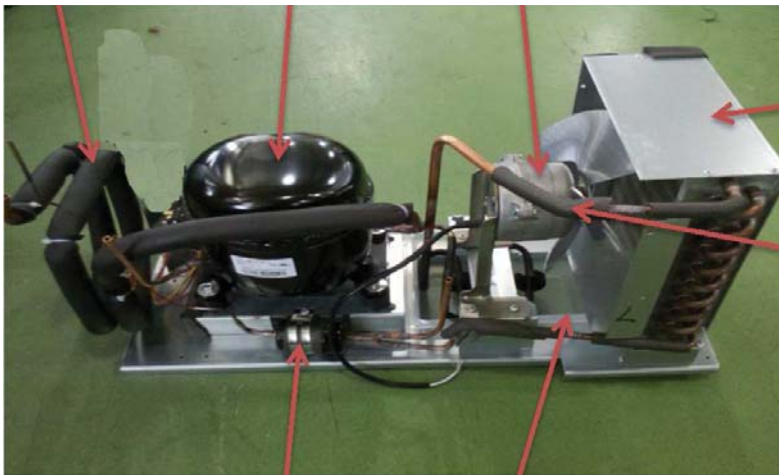
DISPLAY PCB

CONDENSER UNIT

SUCTION PIPE(B)

COMP

CONDENSER FAN MOTOR



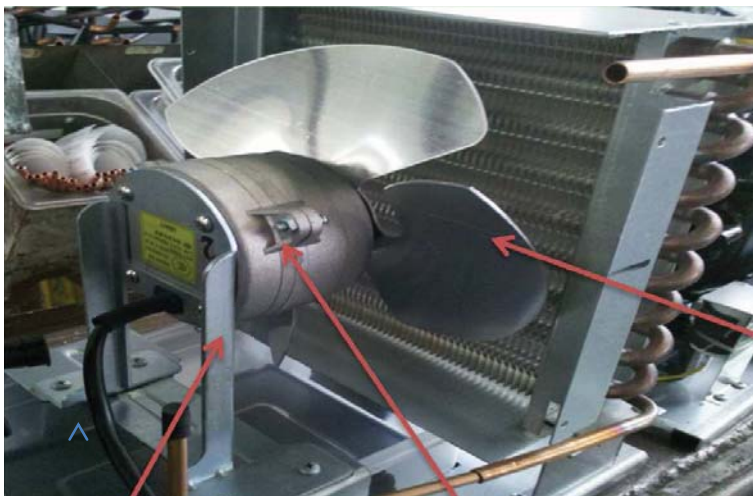
CONDENSER

DRAIN PIPE

DRYER

DRAIN PAN

CONDENSER FAN MOTOR ASSY



CONDENSER MOTOR FAN BLADE

CONDENSER MOTOR BRACKET

CONDENSER MOTOR

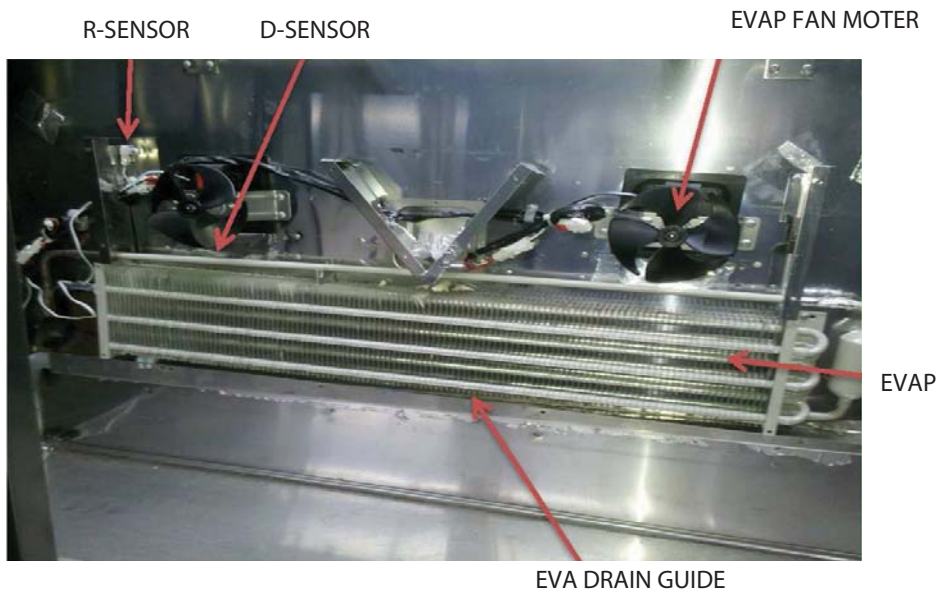
PCB BOX



DOOR GASKET



EVAP UNIT



EVAP DUCT



EVAP DUCT

4. MAIN COMPONENTS

1.COMPRESSOR

MODEL	PART NAME	PART NO.	HP	CAPACITY	TYPE OF	INPUT	MAKER
JBT-36	HBL-27YE-1	M369700100	1/4 HP	-	RSCR	115V 60Hz	DAEWOO
JBT-48	HBL-27YE-1	M369700100	1/4 HP	-	RSCR	115V 60Hz	DAEWOO
JBT-60	HBL-27YE-1	M369700100	1/4 HP	-	RSCR	115V 60Hz	DAEWOO
JBT-72	HBL-27YE-1	M369700100	1/4 HP	-	RSCR	115V 60Hz	DAEWOO

2. COMPRESSOR RELAY , OVERLOAD

MODEL	RELAY	OVERLOAD	MAKER	NOTE
JBT-36	-	4TM314TFBYY-52	SENSATA	
JBT-48	-	4TM314TFBYY-52	SENSATA	
JBT-60	-	4TM314TFBYY-52	SENSATA	
JBT-72	-	4TM314TFBYY-52	SENSATA	

3. COMPRESSOR CAPACITOR

MODEL	STARTING	PART NO.	RUNNING	PART NO.	MAKER	NOTE
JBT-36	200V/100μF	-	230V/10μF	-	-	-
JBT-48	200V/100μF	-	230V/10μF	-	-	-
JBT-60	200V/100μF	-	230V/10μF	-	-	-
JBT-72	200V/100μF	-	230V/10μF	-	-	-

4. CONDENSER FAN MOTOR

MODEL	PART NAME	PART NO.	POLE	INPUT	TYPE	BLADE	MAKER
JBT-36	IS 4420DWSG-1	G8F6600100	4P	115V,60Hz	SHADED POLE INDUCTION	AL3	SUNGSHIN
JBT-48							
JBT-60							
JBT-72							

5. EVAPORATOR FAN MOTOR

MODEL	PART NAME	PART NO.	POLE	INPUT	TYPE	BLADE	MAKER
JBT-36	IS-3220QTBA	M729900201	2P	115V,60Hz	SHADED POLE INDUCTION	ZYTEL 4	SUNGSHIN
JBT-48							
JBT-60							
JBT-72							

6. CAPILLARY TUBE LENGTH AND REFRIGERANT

MODEL	CAPILLAY LENGTH	Refrigerant	MAKER	NOTE
JBT-36	OD2.4, ID1.2, L=2530	7.0oz		
JBT-48	OD2.4, ID1.2, L=3030	7.0oz		
JBT-60	OD2.4, ID1.2, L=3030	8.5oz		
JBT-72	OD2.4, ID1.2, L=3530	10.6oz		

7.FILTER DRYER

MODEL	PART NO.	REFRIGERANT	SPEC	NOTE
JBT-36	BR84100101	R-134A	C-052-5	-
JBT-48	BR84100101	R-134A	C-052-5	-
JBT-60	BR84100101	R-134A	C-052-5	-
JBT-72	BR84100101	R-134A	C-052-5	-

5. PARTS LIST

PART NAME	PART CODE	DESCRIPTION	MODEL				REMARK
			9	12	15	18	
ASSY COUNTER TOP	BR2FF00100			1			
ASSY COUNTER TOP	BR5FF00100				1		
ASSY COUNTER TOP	BR8FF00100					1	
ASSY COUNTER TOP	BR9FF00100		1				
ASSY PAN SUPPORT	BR21800200			1			
ASSY PAN SUPPORT	BR51800200				1		
ASSY PAN SUPPORT	BR81800500					1	
ASSY PAN SUPPORT	BR91800200		1				
PAN GUIDE	BR81800400		1	2	3	4	
PAN GUIDE(S)	BR81800301		4	6	8	10	
ASSY DOOR_900 (R)	KR9AF00102		1				
ASSY DOOR_1200 (L)	KR2AF00202			1			
ASSY DOOR_1200 (R)	KR2AF00102			1			
ASSY DOOR_1500 (L)	KR5AF00202				1		
ASSY DOOR_1500 (R)	KR5AF00102				1		
ASSY DOOR_1800 (L)	KR8AF00202					1	
ASSY DOOR_1800 (M)	KR8AF00302					1	
ASSY DOOR_1800 (R)	KR8AF00102					1	
DOOR GASKET_1200	KR23300103	PVC		2			
DOOR GASKET_1500	KR53300103	PVC			2		
DOOR GASKET_1800	KR83300103	PVC				3	
DOOR GASKET_900	KR93300103	PVC	1				
DOOR BUSHING	M720700101	ABS	2	4	4	6	
SPRING BAR	BR98400100			2		3	
SPRING BAR	BR98400200		1		2		
BOTTOM HINGE (U) (L)	30229M0305	SUS		1	1	1	
BOTTOM HINGE (U) (R)	30229M0405	SUS	1	1	1	2	
DOOR TOP HINGE (L)	M722900206	SUS		1	1	1	
DOOR TOP HINGE (R)	M722900106	SUS	1	1	1	2	
COMPRESSOR	M369700100	HBL-27YE-1	1	1	1	1	
EVAP_12/1500	BR2AD00103	CU		1	1		
EVAP_1800	BR8AD00103	CU				1	
EVAP_900	BR9AD00103	CU	1				

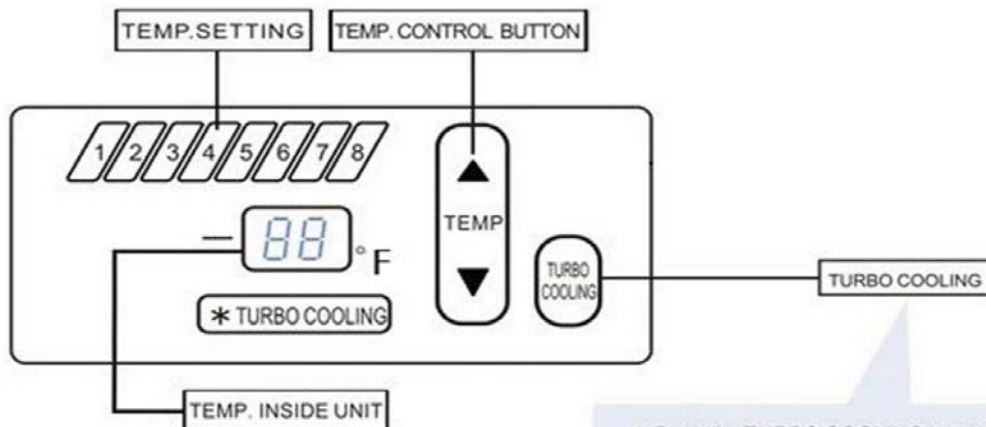
PART NAME	PART CODE	DESCRIPTION	MODEL				REMARK
			9	12	15	18	
DRYER	BR84100100	CU	1	1	1	1	
CONDENSER	KF24900104		1	1	1		
CONDENSER	KF84900105					1	
CONDENSER FAN MOTOR	G8F6600100		1	1	1	1	
EVAP FAN MOTOR	M729900201		1	2	2	3	
DISPLAY PCB	KR85400100		1	1	1	1	
MAIN PCB	BR85400100		1	1	1	1	
POWER CORD	CM71300200		1	1	1	1	
R SENSOR (S/P)	K3F5102101		1	1	1	1	
D SENSOR (S/P)	K3F5102001		1	1	1	1	
TRANS	K3F6000100		1	1	1	1	
MAIN PCB COVER(B)	KR81400100	SUS	1	1	1	1	
MAIN PCB COVER(F)	KR81400200	SUS	1	1	1	1	
ASSY MAGNET	KR89900200	02-10-201-10	2	2	2	2	
ASSY MULLION	KR9AC00100			1	1	1	
ASSY MULLION (B)	BR8AC00100					1	
ASSY UNIT FRONT COVER	KR81900302		1	1	1	1	
EVA DRAIN GUIDE_1200	BR21900102	SUS		1			
EVA DRAIN GUIDE_1500	BR51900102	SUS			1		
EVA DRAIN GUIDE_1800	BR81900102	SUS				1	
EVA DRAIN GUIDE_900	BR91900102	SUS	1				
UNIT SIDE COVER	KR81900104	SUS	1	1	1	1	
EVAP DUCT_1200	BR21700101	SUS		1			
EVAP DUCT_1500	BR51700101	SUS			1		
EVAP DUCT_1800	BR81700101	SUS				1	
EVAP DUCT_900	BR91700101	SUS	1				
SHELF STANDARD	M725300201	SUS	4	8	8	12	
FIXTURE SHELF CLIP	30220L0903	PA-66	4	8	8	12	
SHELF_1200	BR29000102	PE-CO (GRAY)		2			
SHELF_1500	BR59000102	PE-CO (GRAY)			2		
SHELF_1800	BR89000102	PE-CO (GRAY)				2	
SHELF_900	BR99000102	PE-CO (GRAY)	1			1	
CASTER	G8F6500101	MOVE 4 INCH	2	2	2	4	
CASTER	G8F6500201	STOP 4 INCH	2	2	2	2	
FAN COVER WIRE	U609000100		1	2	2	3	
DRAIN PAN	30211A0202	P.P	1	1	1	1	
FRONT PCB CASE	KR93200300	ABS	1	1	1	1	
POWER SWITCH	30281Q0100	ABS	1	1	1	1	
DRAIN HOSE	BR93000100	PVC	1	1	1	1	
CABINET HEATER	JR25300102	OPTION		1			
CABINET HEATER	JR55300102	OPTION			1		
CABINET HEATER	JR85300102	OPTION				1	
CABINET HEATER	JR95300102	OPTION	1				
MULLION HEATER	JR85300201	OPTION		1	1	2	

6. TEMPERATURE CONTROL INSTRUCTION

BASIC OPERATION

1. Plug in and turn on the power switch located on the top side of the unit front cover.
The Display panel will be lighted and make a beep sound. The compressor will begin to run.
2. The default temperature setting is No. "4".
3. The compressor is automatically cycled by the electronic controller(PCB).
4. The Defrost cycle is automatically controlled by the PCB.
5. Set level toward "1" for higher temperature and "8" for lower temperatures.
6. Good Air Flow in refrigerator unit is critical.
Be careful to load product so that it neither presses against the back wall, nor reaches within four inches from the evaporator compartment.

1. By pushing the up/down button, you can set the inside temperature level from "1" to "8"
2. If you want lower temperature, push the Down button to be lighted higher level numbers.



1. Push the TURBO COOLING button, the unit will run with full power for certain period of time.
2. Push the TURBO COOLING button once again, the function will cancel quickly.

1. It displays inside temperature.
2. When the inside temperature is lower than -49°F the panel will display 'LO'.

LO

and higher than $+64.4^{\circ}\text{F}$, the panel will display 'HI'.

HI

7.REPLACEMENT OF MAIN COMPONENTS

7-1.REPLACING DOORS

A.Unscrew the screws on top hinge



B.Take off top hinge



C.Take off doors



B.DOOR ASSY



7-2.REFRIGERATOR

A.Unscrew the screws on EVAP DUCT



B.Take off EVAP DUCT



C.Take off SENSOR



D.Disassemble EVAP MOTOR



E.Pull out the EVAP



7-3.MECHANICAL ROOM

A.Take off the UNIT FRONT COVER



B.Take off the UNIT SIDE COVER



C.Take off the MACH COVER



D.Unscrew the screws on COMP BASE



E.Pull-out MECHANICAL ROOM



A. Unsolder SUCTION PIPE(B) and COMP as below



B. Unsolder CONDENSER and DRAIN PIPE as below



C. Disassemble the COMPRESSOR



D. Take apart the CONDENSER MOTOR



E. Disassemble the CONDENSER



F. Disassemble filter dryer



7-5 Replace Front PCB

A. lift the unit front cover as illustrated below.



B. Switch off the power.



C. Unplug

D. Remove the display PCB back cover by unscrewing the four screws located on the display PCB back cover.



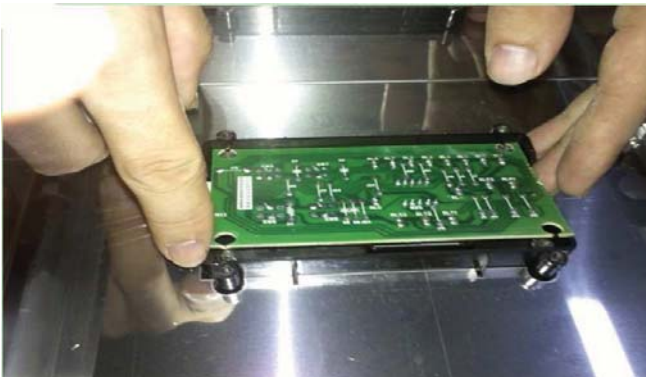
E.Disassemble display PCB.



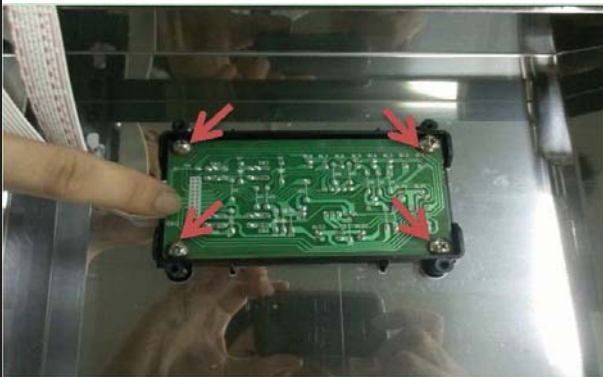
F.Replace display PCB with the new one.



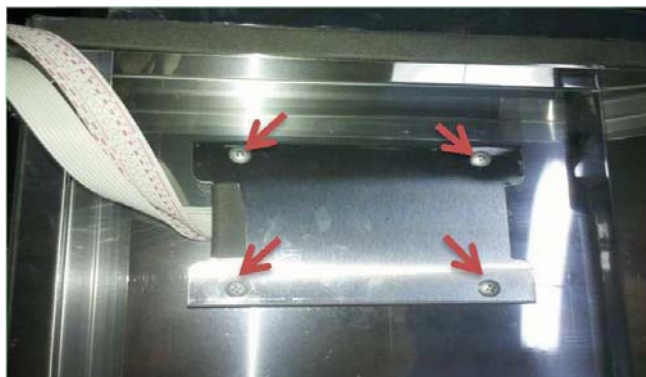
G.Screw the display PCB.



H.Tighten the screws located on display PCB back cover.



I.Put the plug in the socket.



J.Turn on the unit.



7-6 How to use Display PCB

A.Push "SW1" and "SW2" button (SW1▼. SW2▲) at the same time and wait five seconds to set mode.



B.Bar LED display "F1",the unit is at the mode of freezer.



C. Then push "SW1" button (SWI ▼) one time, the unit is at the mode of freezer (F2).



D. Push "SW1" button (SWI ▼) again, the unit is at the mode of refrigerator (R1).



E. Turn off the power after setting the necessary mode, then restart the power.



7-7 Replace Main PCB

A. Lift the unit front cover as illustrated below.

B. Unscrew the main PCB cover (front).



C. Unscrew the the main PCB cover(back).



D. Disconnect the connectors.



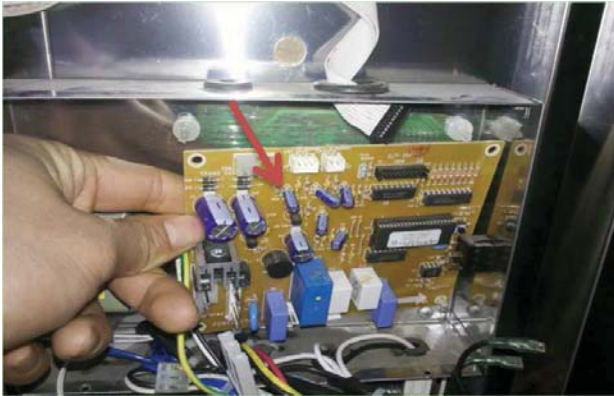
E. Figure of the removed connectors.



F. Separate the PCB.



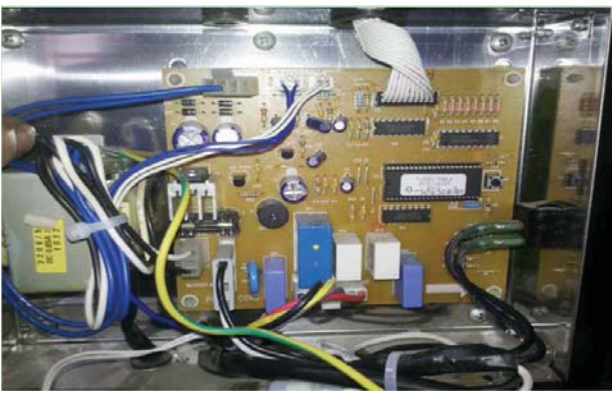
G. Take apart the main PCB from electrical box.



H. Replace the main PCB with the new one.



I. Connect connectors of main PCB.



J. Tighten the screws as below.



K.Assemble the unit front cover.



7-8 Replacing cabinet frame heater(and/or)mullion heater

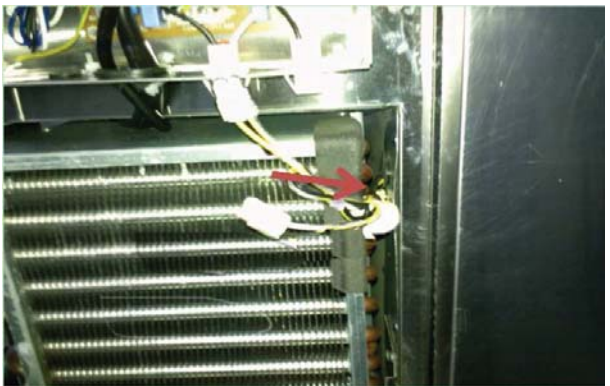
A.Insert thepoint of“-”type screw driver into the gap between the frame and frame cover.



B.Take apart the frame cover from the frame.



C.Pull out the heater wire from the inlet.



D.Insert new cabinet heater wire to the inlet.



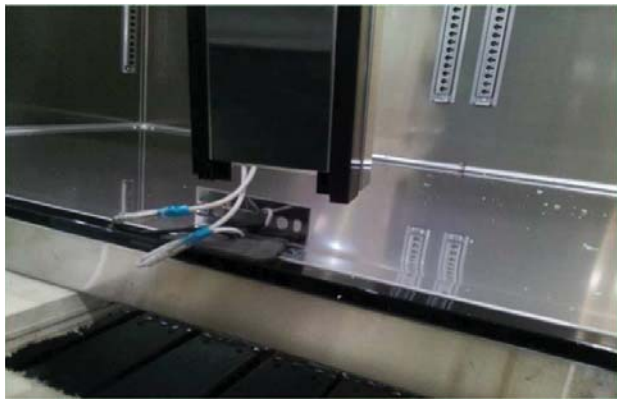
E.Assemble the frame cover with frame.Pat the frame cover with the soft hammer,etc.



F.Disassemble the mullion frame.



G.Uncap connectors of mullion heater.



H.Take apart mullion frame cover from mullion frame.



I.Replace the mullion heater with a new one.

