



# FLIPPIN' BRILLIANT.

MOTOROLA BACKFLIP™ with MOTOBLUR™

## Welcome

MOTOROLA BACKFLIP with MOTOBLUR syncs contacts, posts, feeds, messages, email, photos and much more—from sources like Facebook®, Twitter, MySpace, Gmail™, Yahoo, your work email, Picasa™, Photobucket®, LastFM, Bebo™, and Skyrock—and serves them up just the way you want them.

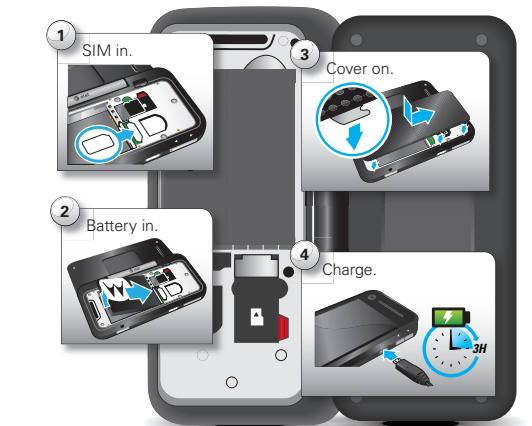
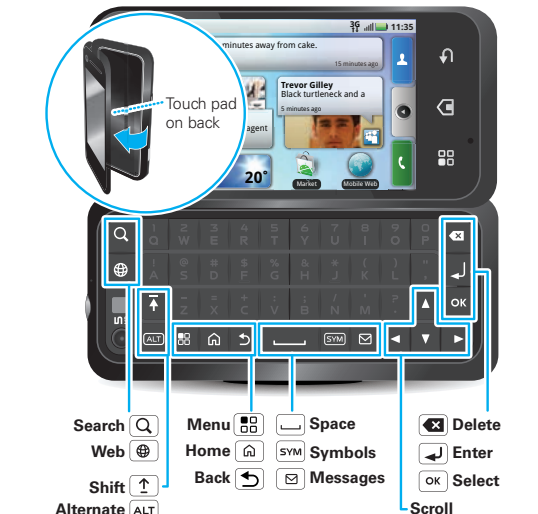
## Your phone

Most of what you need is in the touchscreen and three simple keys on the front:

- **Home:** Go to the home screen, then open the app menu.
- **Menu:** Open menu options.
- **Back:** Go back one screen.

If you want a full keyboard (good for texting, or searching in your **Contacts** list), just flip open your phone—the screen spins to stay right-side up.

With your phone open, you can also flick and double-tap the touch pad on the back of the display!



## Let's go

Let's get you up and running.

**Tip:** Your phone comes with a microSD memory card already installed. It's right next to your SIM card.

**Caution:** Before assembling, charging or using your phone for the first time, please read the important **Safety, Regulatory & Legal** information provided with your phone.



**Make a note**  
Your MOTOBLUR ID: \_\_\_\_\_  
Your MOTOBLUR password: \_\_\_\_\_

## Touch

It's all in the touch:

- **Touch:** Choose an icon or option.
- **Touch & Hold:** Open options.
- **Drag:** Scroll or move slowly.
- **Flick:** Scroll or move quickly.

**Tip:** If your screen goes to sleep, press Power to wake it up.



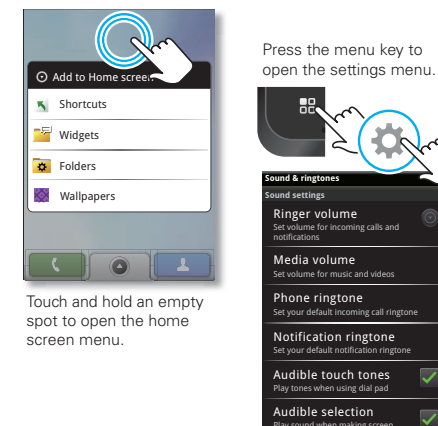
## Home

The *home screen* gives you all your latest information in one place. It's what you see when you turn on the phone or touch Home from a menu.

Use the widgets, shortcuts and panels to see what's important to you—whether it's home, work or play.

**Tip:** To move or delete something, touch and hold it, then drag it to another spot, another panel, or the trash can.

- **Ringtones & sounds:** Touch Menu > Settings > Sound & ringtones.



## Personalize

Go ahead, add your personal touch. Change your widgets, wallpaper, ringtone, and more—make it yours.

- **Home screen:** To add something or change your wallpaper, touch and hold an empty spot until you see the **Add to Home screen** menu.

**Tip:** To move or delete something, touch and hold it, then drag it to another spot, another panel, or the trash can.



- **Ringtones & sounds:** Touch Menu > Settings > Sound & ringtones.

MOTOROLA and the Stylized M Logo are registered in the US Patent & Trademark Office. The MOTOBLUR Logo is a trademark of Motorola. The Bluetooth trademarks are owned by their proprietor and used by Motorola, Inc. under license. Facebook is a trademark of Facebook, Inc. Google, YouTube, Picasa, Gmail, and the Google logo are trademarks of Google, Inc. WiFi is a Certification Mark of the Wireless Fidelity Alliance, Inc. Bebo and the B Logo are trademarks of Bebo, Inc. All other product or service names are the property of their respective owners.  
© 2010 Motorola, Inc. All rights reserved.  
**Caution:** Changes or modifications made in the radio phone, not expressly approved by Motorola, will void the user's authority to operate the equipment.  
**Bluetooth ID: B015727**  
MOTOROLA BACKFLIP with MOTOBLUR (MB300)  
Manual Number: 68000202596-A







## Apps


You can find all of your apps in one place. From the home screen, just touch  or Home  to open and close the app tray.


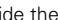

**Tip:** To find an app in the app tray, open your phone and type the app name.

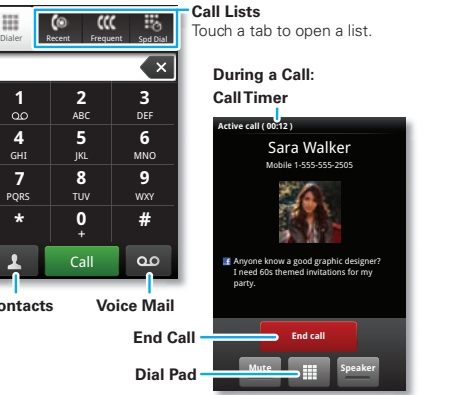
Want more? No problem: To download more apps, touch  >  **Market**.




## Calls

Your dial pad and call lists are just a touch or two away—no menus needed. Just touch  **Dialer** from the home screen.

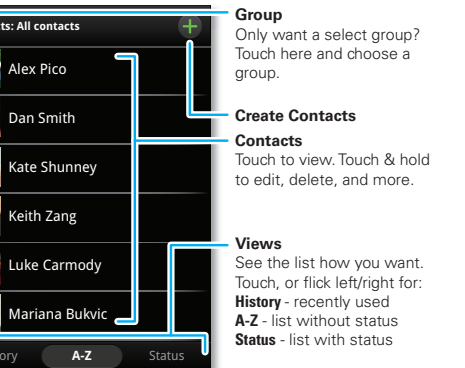
**Tip:** During a call, touch Home  or Back  to hide the active call display and use other apps. To reopen it, touch  **Dialer**.



## Contacts


Now you have contacts like you've never had before, downloaded from your accounts and backed up on MOTOBLUR. View, search, and use them your way. Touch  **Contacts** in the home screen.

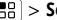
**Tip:** When you flick or drag this list, a scroll bar appears on the right. Drag the scroll bar to move the list faster. To search the list, just open your phone and type a name.



## Updates


Find out what everyone is doing. Touch your **Messages** or **Happenings** widgets to see the newest update, then:

- See more: Flick left to see more updates or messages.
- See details: Touch . Then, in **Happenings**, you can touch the social network's icon for more access.

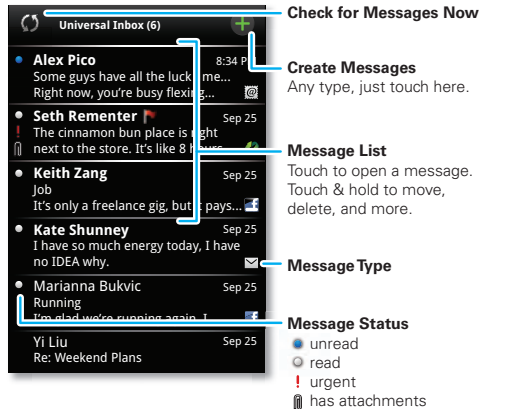
**Tip:** To add social network or email accounts, touch Menu  > **Settings** > **Accounts** > **Add account...** and sign in with that account's user name or email.



## Messages




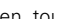


All of your messages stay in one place—text, IM, email, Facebook, and more. Touch  > **Messaging** > **Universal Inbox**.

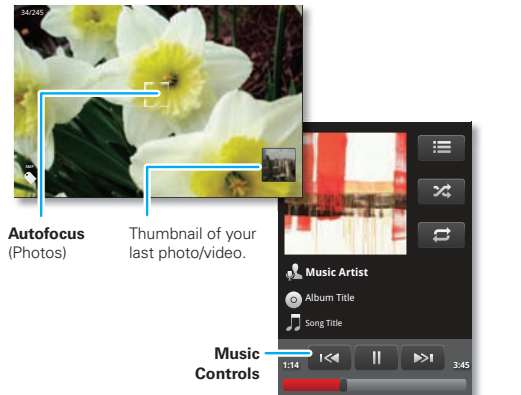
**Tip:** To type in a message, open your phone or touch a text field to open the touchscreen keypad.



## Media

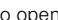
See it, capture it, share it! You'll even have time to relax to some music.

- **Photos:** press Camera  and press again to take your photo.
- **Videos:** press Camera  > Menu  > **Camcorder**, then press Camera  to record your video. To see what you've taken, touch  > **Picture Gallery** or **Video Gallery**.
- **Music:** Touch  > **Music**, and touch a category.



## Table top


When you plug in the charger and open your phone partway, the display stays on to show you a bedside alarm clock!


You can touch Home  to open pictures, videos, music controls, or whatever you want to use. To go back to the clock, flick down the status bar and touch **Return to clock mode**.

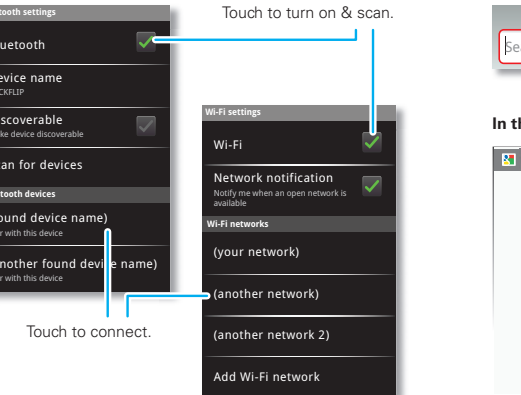


## Wireless

Lose the wires—touch Menu  > **Settings** > **Wireless controls**.


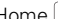

- **Bluetooth™:** For handsfree calls and wireless music, touch Bluetooth settings and connect to your accessory.
- **Wi-Fi™:** For fast internet access, touch Wi-Fi settings and connect to a home, office or hotspot network. For connection details, touch Menu  > **Advanced**.

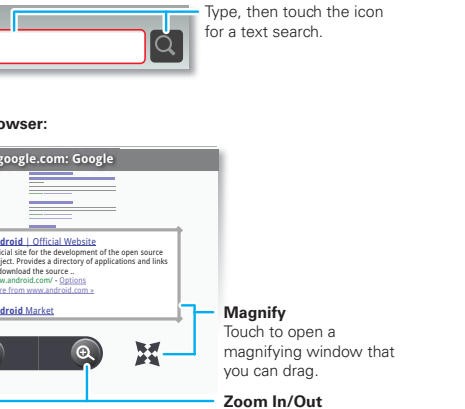
**Tip:** To quickly turn wireless features on or off, press and hold Power  until the power menu appears.



## Tips


Here are some good things to know:

- **Save Battery:** Press and hold Power , then touch GPS, Wi-Fi, or Bluetooth power to turn them off when not in use.
- **See Recent Apps:** Touch and hold Home .
- **Search:** Open your phone and press Search  on the keypad.



## More

There's more help, more accessories, more free stuff. We're here to help.

- **Help:** Check out the help center on your phone—touch  > **Help Center** or find more help online at [www.motorola.com/mybackflip](http://www.motorola.com/mybackflip).
- **Accessories:** Find more for your phone at [www.motorola.com/products](http://www.motorola.com/products).
- **Load your files:** Download Media Link at [www.motorola.com/mymedialink](http://www.motorola.com/mymedialink).
- **MOTOBLUR:** Go see your MOTOBLUR account at [www.motorola.com/mymotoblur](http://www.motorola.com/mymotoblur).

