



**Henny Penny
Hand Breader/Sifter
Model HB-121**

TECHNICAL MANUAL

TABLE OF CONTENTS

Section	Page
Section 1. MAINTENANCE	1-1
1-1. Introduction	1-1
1-2. Safety	1-1
1-3. Replacement of Belt	1-2
1-4. Replacement of Mandrel	1-2
1-5. Replacement of Motor	1-3
1-6. Replacement of Switch	1-4
1-7. Replacement of Rod End Bearing	1-5
1-8. Replacement of Push Rod Bearing	1-6
1-9. Replacement of Sifter Bearing	1-6
1-10. Wiring Diagrams	1-7
Section 2. PARTS INFORMATION	2-1
2-1. Introduction	2-1
2-2. Genuine Parts	2-1
2-3. How to Find Parts	2-1
2-4. How to Order Parts	2-1
2-5. Prices	2-1
2-6. Delivery	2-1
2-7. Warranty	2-1
2-8. Recommended Spare Parts for Distributors	2-1

SECTION 1. MAINTENANCE

1-1. INTRODUCTION

Electrical and mechanical components which may require servicing are contained beneath the cover plate assembly. Outlined below are step by step procedures when replacing parts becomes necessary. Refer to exploded drawing in this manual.

1-2. SAFETY

The only way to ensure safe operation of the Henny Penny Hand Breader/Sifter is to fully understand the proper installation, operation, and maintenance procedures. The instructions in this manual have been prepared to aid you in learning the proper procedures. Where information is of particular importance or is safety related, the words NOTICE, CAUTION or WARNING are used. Their usage is described below:



SAFETY ALERT SYMBOL is used with DANGER, WARNING, or CAUTION which indicates a personal injury type hazard.



NOTICE is used to highlight especially important information.



CAUTION used without the safety alert symbol indicates a potentially hazardous situation which, if not avoided, may result in property damage.



CAUTION used with the safety alert symbol indicates a potentially hazardous situation which, if not avoided, may result in minor or moderate injury.



WARNING indicates a potentially hazardous situation which, if not avoided, could result in death or serious injury.

1-3. REPLACEMENT OF BELT

1. Remove all equipment (breeding lugs, back splash, dip pot, etc.) from top of unit.
2. Remove top (28) by lifting from unit.
3. Using a #2 Phillips screwdriver, remove two screws (17) from cover plate assembly (16), and slide cover plate assembly out towards the sifter basket.
4. Using a 1/2" wrench, loosen the hex nuts on the adjustable foot (10) so that the motor (8) can be moved to loosen the belt (1).
5. Replace belt and adjust tension.

NOTICE

Proper tension is achieved when belt deflects approximately 1/2" (12.7 mm).

1-4. REPLACEMENT OF MANDREL



To avoid electrical shock or property damage, move the power switch to OFF and disconnect main circuit breaker, or unplug cord at wall receptacle.

1. Remove all equipment from top of unit.
2. Remove top (28) by lifting from unit.
3. Remove two screws (17) from cover plate assembly (16) and slide assembly out towards the sifter basket.

**1-4. REPLACEMENT OF
MANDREL (Continued)**

4. Loosen hex nuts on the adjustable foot (10), move motor, and loosen belt. Remove belt.
5. Using a 5/16" Allen wrench, remove set screw (62) from driven pulley and remove pulley (53).
6. Turn mandrel shaft (52) until the eccentric (49) and rod end bearing (46) are accessible.
7. Remove shoulder screw (51) and washers (48-43) and allow rod end bearing (46) and push rod assembly (44) to fall free.
8. Remove four bolts (5) holding mandrel to mounting bracket and remove.
9. Remove eccentric (49) and eccentric spacer (57) by moving eccentric clockwise.



The eccentric has left hand threads. Move the eccentric clockwise or threads of eccentric could be damaged.

**1-5. REPLACEMENT OF
MOTOR**



To avoid electrical shock or property damage, move the power switch to OFF and disconnect main circuit breaker, or unplug cord at wall receptacle.

1. Remove all equipment from top of unit.
2. Remove top (28) by lifting from unit.
3. Remove two screws (17) from cover plate assembly (16) and slide assembly out towards the sifter basket.
4. Remove nut (50) from cord clamp (26), and pull cord from clamp.

1-5. REPLACEMENT OF MOTOR (Continued)

5. Loosen the hex nuts on the adjustable foot (10), loosen belt, and then remove belt.
6. Remove the hinge pin from hinge (7) and remove motor (8).
7. Remove the wiring cover plate from the motor and disconnect wires from motor.



When wiring new motor leads, refer to the wiring diagram in this manual. The motor must rotate in a counterclockwise direction, or damage to the unit could result.

8. Transfer bolts (5), nuts (2), lockwashers (3), and hinge to new motor and install.
9. Reassemble in reverse order of above procedures.



To avoid loose connections and possible component damage, wire nut connections must be tight and secured with electrical tape.

1-6. REPLACEMENT OF SWITCH



To avoid electrical shock or property damage, move the power switch to OFF and disconnect main circuit breaker, or unplug cord at wall receptacle.

1. Remove all equipment from top of unit.
2. Remove top (28) by lifting from unit.
3. Remove two screws (17) from cover plate assembly.
4. Remove the switch mounting nut, switch on/off plate and switch guard.
5. Place wires on new switch exactly as on old switch.
6. Replace switch nut, on/off plate, and switch guard, and tighten.

**1-7. REPLACEMENT OF
ROD END BEARING**



To avoid electrical shock or property damage, move the power switch to OFF and disconnect main circuit breaker, or unplug cord at wall receptacle.

1. Remove all equipment from top of unit.
2. Remove top (28) by lifting from unit.
3. Remove two screws (17) from cover plate assembly (16) and slide assembly out towards the sifter basket.
4. Turn mandrel shaft (52) until eccentric (49) and rod end bearing (46) are accessible.
5. Remove shoulder screw (51), nut and washers (48-43), and allow rod end bearing (46) and push rod assembly (44) to fall free.
6. Remove spring retainer (38) and lift push rod (44) off basket holder (39).
7. Remove push rod assembly from unit and measure the distance from the end of the rod end bearing (46) to the locking nut (45).
8. Using two 9/16" wrenches, loosen locking nut (45) and unthread rod end bearing from push rod (44).
9. Install locking nut (45) to new rod end bearing in same position as old rod end bearing.
10. Snug locking nut and install push rod assembly to basket holder (39) and eccentric (49), and tighten with 9/16" wrench.

1-8. REPLACEMENT OF PUSH ROD BEARING



To avoid electrical shock or property damage, move the power switch to OFF and disconnect main circuit breaker, or unplug cord at wall receptacle.

1. Remove all equipment from top of unit.
2. Remove spring retainer (38) from basket holder (39).
3. Lift end of push rod (44) from basket holder.
4. Replace push rod bearing (42).

1-9. REPLACEMENT OF SIFTER BEARING

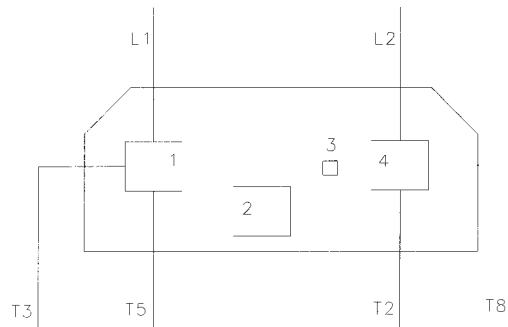


To avoid electrical shock or property damage, move the power switch to OFF and disconnect main circuit breaker, or unplug cord at wall receptacle.

1. Remove all equipment from top of unit.
2. Remove spring retainer (38) from basket holder (39).
3. Lift end of push rod (44) from basket holder.
4. Remove basket (40-41) and basket holder (39) from unit.
5. Replace sifter bearing (37).

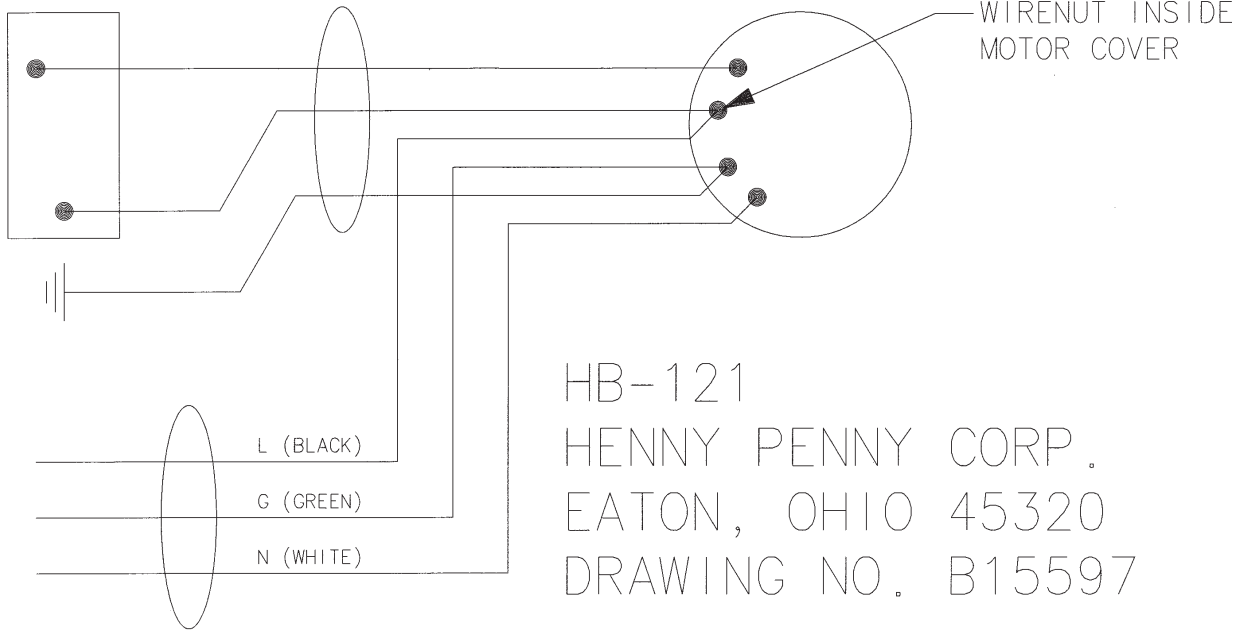
1-10. WIRING DIAGRAMS

INSTRUCTIONS:
WIRE AS SHOWN FOR 120V,
CCW ROTATION (FACING PULLEY END)



SWITCH

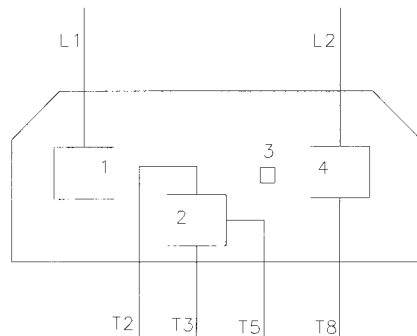
MOTOR



POWER
SUPPLY

HB-121
HENNY PENNY CORP.
EATON, OHIO 45320
DRAWING NO. B15597

INSTRUCTIONS:
WIRE AS SHOWN FOR 220-240V,
CCW ROTATION (FACING PULLEY END)



LIMITED WARRANTY FOR HENNY PENNY EQUIPMENT

Subject to the following conditions, Henny Penny Corporation makes the following limited warranties to the original purchaser only for Henny Penny appliances and replacement parts:

NEW EQUIPMENT: Any part of a new appliance, except baskets, lamps, and fuses, which proves to be defective in material or workmanship within two (2) years from date of original installation, will be repaired or replaced without charge F.O.B. factory, Eaton, Ohio, or F.O.B. authorized distributor. Baskets will be repaired or replaced for ninety (90) days from date of original installation. Lamps and fuses are not covered under this Limited Warranty. To validate this warranty, the registration card for the appliance must be mailed to Henny Penny within ten (10) days after installation.

FILTER SYSTEM: Failure of any parts within a fryer filter system caused by the use of the non-OEM filters or other unapproved filters is not covered under this Limited Warranty.

REPLACEMENT PARTS: Any appliance replacement part, except lamps and fuses, which proves to be defective in material or workmanship within ninety (90) days from date of original installation will be repaired or replaced without charge F.O.B. factory, Eaton, Ohio, or F.O.B. authorized distributor.

The warranty for new equipment covers the repair or replacement of the defective part and includes labor charges and maximum mileage charges of 200 miles round trip for a period of one (1) year from the date of original installation.

The warranty for replacement parts covers only the repair or replacement of the defective part and does not include any labor charges for the removal and installation of any parts, travel, or other expenses incidental to the repair or replacement of a part.

EXTENDED FRYPOT WARRANTY: Henny Penny will replace any frypot that fails due to manufacturing or workmanship issues for a period of up to seven (7) years from date of manufacture. This warranty shall not cover any frypot that fails due to any misuse or abuse, such as heating of the frypot without shortening.

0 TO 3 YEARS: During this time, any frypot that fails due to manufacturing or workmanship issues will be replaced at no charge for parts, labor, or freight. Henny Penny will either install a new frypot at no cost or provide a new or reconditioned replacement fryer at no cost.

3 TO 7 YEARS: During this time, any frypot that fails due to manufacturing or workmanship issues will be replaced at no charge for the frypot only. Any freight charges and labor costs to install the new frypot as well as the cost of any other parts replaced, such as insulation, thermal sensors, high limits, fittings, and hardware, will be the responsibility of the owner.

Any claim must be presented to either Henny Penny or the distributor from whom the appliance was purchased. No allowance will be granted for repairs made by anyone else without Henny Penny's written consent. If damage occurs during shipping, notify the sender at once so that a claim may be filed.

THE ABOVE LIMITED WARRANTY SETS FORTH THE SOLE REMEDY AGAINST HENNY PENNY FOR ANY BREACH OF WARRANTY OR OTHER TERM. BUYER AGREES THAT NO OTHER REMEDY (INCLUDING CLAIMS FOR ANY INCIDENTAL OR CONSEQUENTIAL DAMAGES) SHALL BE AVAILABLE.

The above limited warranty does not apply (a) to damage resulting from accident, alteration, misuse, or abuse; (b) if the equipment's serial number is removed or defaced; or (c) for lamps and fuses. THE ABOVE LIMITED WARRANTY IS EXPRESSLY IN LIEU OF ALL OTHER WARRANTIES, EXPRESS OR IMPLIED, INCLUDING MERCHANTABILITY AND FITNESS, AND ALL OTHER WARRANTIES ARE EXCLUDED. HENNY PENNY NEITHER ASSUMES NOR AUTHORIZES ANY PERSON TO ASSUME FOR IT ANY OTHER OBLIGATION OR LIABILITY.

Revised 01/01/07

SECTION 2. PARTS INFORMATION

2-1. INTRODUCTION

This section identifies and lists the replaceable parts of the Henny Penny HB-121 Hand Breader/Sifter.

2-2. GENUINE PARTS

Use only genuine Henny Penny parts in your unit. Using a part of lesser quality or substitute design may result in unit damage or personal injury.

2-3. HOW TO FIND PARTS

To find items you want to order from the Parts List, proceed as follows:

1. Refer to the exploded drawing in this section to identify the part needed.
2. Use the item number from the exploded drawing to locate the corresponding part in the parts list in this section. In this list will be the Henny Penny part number and description of the part.

2-4. HOW TO ORDER PARTS

Once the part you want to order has been found in the Part List, write down the following information:

1. From the exploded drawing and Parts List (Sample)

Item Number	37
Part Number	15232
Description	Sifter Bearing

2. From the data plate (Sample)

Product Number	HB121.0
Serial Number	00100
Voltage	120 V

2-5. PRICES

Your distributor has a price parts list and will be glad to inform you of the cost of yours parts order.

2-6. DELIVERY

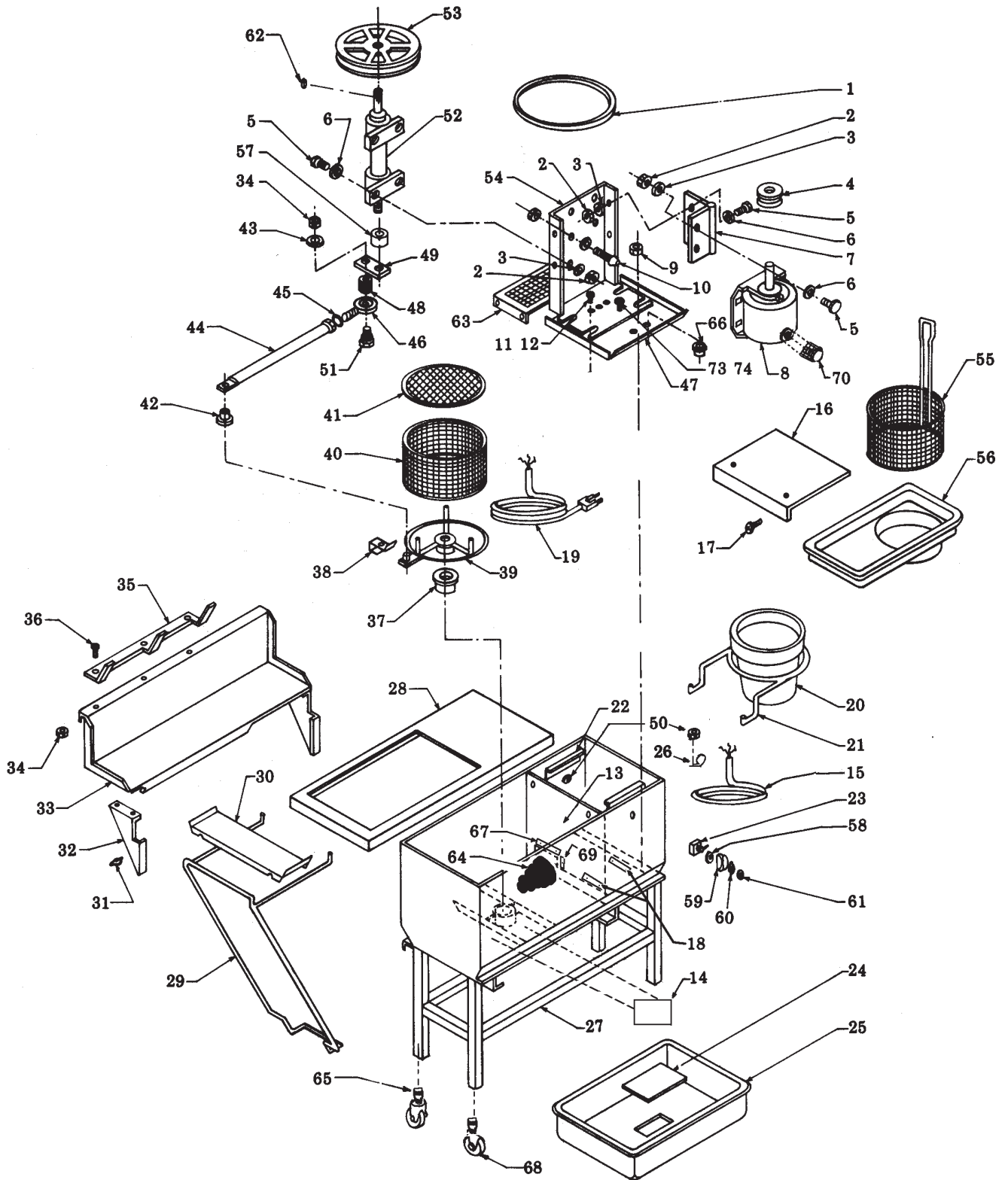
Commonly replaced items are stocked by your independent Henny Penny distributor and will be sent out when your order is received. Other parts will be ordered by the distributor from Henny Penny Corporation. Normally, these will be sent to your distributor within three working days.

2-7. WARRANTY

All replacement parts (except lamps and fuses) are covered under warranty for 90 days against manufacturing defects and workmanship. If damage occurs during shipping, notify the carrier at once so that a claim may be properly filed. Refer to the warranty in this manual for other rights and limitations.

**3-7. RECOMMENDED
SPARE PARTS FOR
DISTRIBUTORS**

Recommended replacement parts, stocked by your distributor, are indicated with ✓ in the parts lists. Please use care when ordering recommended parts, because all voltages and variations are marked. Distributors should order parts based upon common voltages and equipment sold in their territory.



**EXPLODED VIEW OF
HB-121 HAND BREADER/SIFTER**

HAND BREADER/SIFTER HB-121

No.	Part No.	Description	Qty.
√ 1	15254	Belt	1
2	NS01-003	Nut (5/16-18)	8
3	LW01-004	Lockwasher (5/16)	8
4	15261	Sheave Driver Pulley (1.75 OD-1/2" Bore) - 120 V units	1
4	63108	Sheave Driver Pulley (2.00 OD-1/2" Bore) - 240 V units	1
5	SC01-026	Screw (5/16-18 x 3/4)	8
6	WA01-001	Washer (5/16 Flat)	8
7	15269	Hinge	1
√ 8	63106	Motor - 120 V-60 Hz (1/4 hp - CW rotation)	1
√ 8	63107	Motor - 240 V-50 Hz (1/4 hp - CW rotation)	1
√ 8	14300	Motor And Hinge Kit (240 volt units built before 10-13-00)	1
	63105	Motor - 120/240 V-50/60 Hz	1
	63108	Sheave, Driver	1
	15269	Hinge	1
9	NS02-002	Nut (1/4-20 Hex Keps)	10
10	15256	Adjustment Foot Assembly	1
11	SC01-002	Screw (#10-32 x 1/2" Truss Head)	2
12	NS02-001	Nut (#10-32 Hex Keps)	2
13	15884	Partition	1
14	15230	Instructions Decal	1
15	15700	Switch Cord Assembly	1
15	74519	Cord - AUS Power	1
16	15889	Cover Plate Assembly	1
	15597	Wiring Diagram Decal	1
17	SC04-003	Screw (#8-32 x 3/8 PH Pan Head)	2
18	15349	Motor Spacers	2
19	15701	Cord w/Plug (7'long, Type 16/3 SJ)	1
19	74415	Cord - Sub Assy AUS	1
20	15300	Dip Pot	1
21	15252	Dip Pot Holder	1
22	15560	Slide - Cover	2
√ 23	22195	Switch	1
24	15115	Lug Plug	2
25	15716	Breeding Lug	2
26	EF02-032	Clamp - Cord	1
27	15880	Bin and Frame - Right Hand	1
27	15881	Bin and Frame - Left Hand	1
27	15944	Bin and Frame-K-Mart - Left Hand	1
28	15900	Top	1
29	15253	Tray Rack	1
30	15241	Pan Support	1
31	NS03-003	Nut, Wing (#10-24)	4
32	15227	Gusset - Left	1
32	15352	Gusset - Right	1
33	15875	Back Splash - Left	1
33	15876	Back Splash - Right	1
34	NS02-006	Nut (# 10-24 Hex Keps)	3
35	15228	Basket Hanger	1
36	SC01-015	Carriage Bolt (#10-24 x 1/2)	3
37	15232	Sifter Bearing	1
38	15233	Spring - Retainer	1

√ recommended parts

HAND BREADER/SIFTER HB-121

No.	Part No.	Description	Qty.
40	15247	Basket Wall	1
41	15281	Basket Bottom	1
42	15231	Bearing Push Rod	1
43	LW01-001	Lockwasher - 3/8"	1
44	15260	Push Rod	1
45	NS01-020	Nut (3/8-24)	1
√ 46	15346	Rod End - Bearing	1
47	15702	Guard - Drive	1
48	14083	Kit - HB-120/HB-121 - Mandrel 5/8 (SN: KC0404001 & below)	1
48	26386	Spacer Foot (SN: KC0404002 & above)	1
√ 49	14083	Kit - HB-120/HB-121 - Mandrel 5/8 (SN: KC0404001 & below)	1
√ 49	66162	Eccentric (SN: KC0404002 & above)	1
50	NS02-006	Nut - Clamp/Ground	6
51	SC01-069	Bolt - Hex (3/8-16 x 1-1/2")	1
√ 52	14083	Kit - HB-120/HB-121 - Mandrel 5/8 (SN: KC0404001 & below)	1
√ 52	67190	Assy - Shaft and Bearings (SN: KC0404002 & above)	1
	66161	Shaft(SN: KC0404002 & above) (SN: KC0404001 & below use 14083)	1
	21180	Pillow Block Assembly	2
53	15170	Sheave - Driven (Pulley, 8.00 O.D. x 1/2' Bore)	1
54	15246	Drive Mounting Bracket	1
55	12140	Dip Basket	1
56	12176	Plastic Drip Tray	1
57	14083	Kit - HB-120/HB-121 - Mandrel 5/8 (SN: KC0404001 & below)	1
57	(use 14083)	Eccentric - Spacer	1
58	EF02-009	Nut - Hex Switch	1
59	15302	Guard - Switch	1
60	22197	Plate On/Off Switch	1
61	EF02-010	Nut - Switch	1
62	15163	Key - 3/16" x 1"	1
63	15439	Panel - Access - Bottom	1
64	15888	Boot	1
65	26534	Caster Unit (without brake)	2
66	EF02-047	Bushing - Strain Relief	1
67	15891	Boot Clamp - 2 Hole	2
68	26533	Caster Unit (Brake)	2
69	15887	Boot Clamp - 1 Hole	2
70	EF02-016	Strain Relief	1
√ 71	15624	Microswitch (Canada Only) (Not Shown)	2
72	05019	Bun Pan (Not Shown)	1
73	15895	Bin Corners (Not Shown)	4

√ recommended parts

