

SERVICE MANUAL

# CALYPSO



---

© 2011 Handicare

All rights reserved.

The information provided herein may not be reproduced and/or published in any form, by print, photoprint, microfilm or any other means whatsoever (electronically or mechanically) without the prior written authorization of Handicare.

The information provided is based on general data concerning the constructions known at the time of the publication of this manual. Handicare executes a policy of continuous improvement and reserves the right to changes and modifications.

The information provided is valid for the product in its standard version. Handicare cannot be held liable for possible damage resulting from specifications of the product deviating from the standard configuration.

The available information has been prepared with all possible diligence, but Handicare cannot be held liable for possible errors in the information or the consequences thereof.

Handicare accepts no liability for loss resulting from work executed by third parties.

Names, trade names, etc. used by Handicare may not, as per the legislation concerning the protection of trade names, be considered as being available.

XXXXXX-000001000-en.doc

This manual .....	4
Product reference .....	5
Available documentation .....	6
Service and technical support.....	7
Identification plate .....	7
Identification of the product .....	7
Warranty .....	8
Used scooters and the environment .....	9
Use according to purpose <sup>1</sup> .....	9
Approval .....	10
CE declaration.....	10
<b>1 General safety regulations and instructions .....</b>	<b>11</b>
1.1 Decals and instructions on the scooter .....	11
1.2 Technical specifications .....	11
1.3 Modifications .....	11
1.4 Safety .....	11
<b>2 Adjustment options.....</b>	<b>12</b>
2.1 Seat adjustments .....	12
2.2 Adjusting the steering column.....	12
<b>3 Programmer .....</b>	<b>13</b>
3.1 Electrical diagram.....	14
3.2 Connections printed circuit board .....	14
<b>4 Technical specifications .....</b>	<b>16</b>
4.1 Product specifications .....	16
4.2 Approval .....	17
<b>5 Use of the parts lists .....</b>	<b>18</b>
001: Front tyre assy (3w).....	19
002: Rear tyre assy (3-4w) .....	20
003: Front tyre assy (4w).....	21
004: Free wheel lever assy .....	22
005: Rear frame assy .....	23
006: Rear chassis assy .....	24
007: Rear section assy.....	25
008: Rear section assy.....	26
009: Front floorpan assy.....	27
010: Front frame assy (3w) .....	28
011: 3w scooter assy.....	29
012: Front axle (4w) .....	30
013: Front frame assy (4w) .....	31
014: Front section assy (4w) .....	32
015: Front floorpan assy (4w).....	33
016: 4w scooter assy.....	34
017: Transaxle assy .....	35
018: Head light support assy.....	36
019: Console bottom cover assy.....	37
020: Tilting tiller assy.....	38
021: 3w scooter assy.....	39
022: 4w scooter assy.....	40
023: Basket support assy .....	41
024: Wig-wag assy .....	42
025: Armrest assy RH .....	43
026: Armrest assy LH.....	44
027: Seat assy.....	45
028: Seat post assy.....	46
029: Front cover tiller assy .....	47
030: Battery cover assy.....	48
031: Console top cover assy .....	49
032: Rear motor cover assy .....	50
033: 3w scooter assy.....	51
034: 4w scooter assy.....	52
035: Parts pack.....	53
036: Seat frame assy .....	54

### **This manual**

This manual contains the basic instructions for repairs and general maintenance of the Calypso electric scooter. Mechanics who do repairs on this scooter must be well trained and familiar with the repair methods and the maintenance of the Calypso electric scooter.

It is important to see to it that work is always done safely, particularly with respect to activities where the scooter must be lifted up.

We advise that you contact our service department before doing repair work on a scooter that has been involved in an accident.

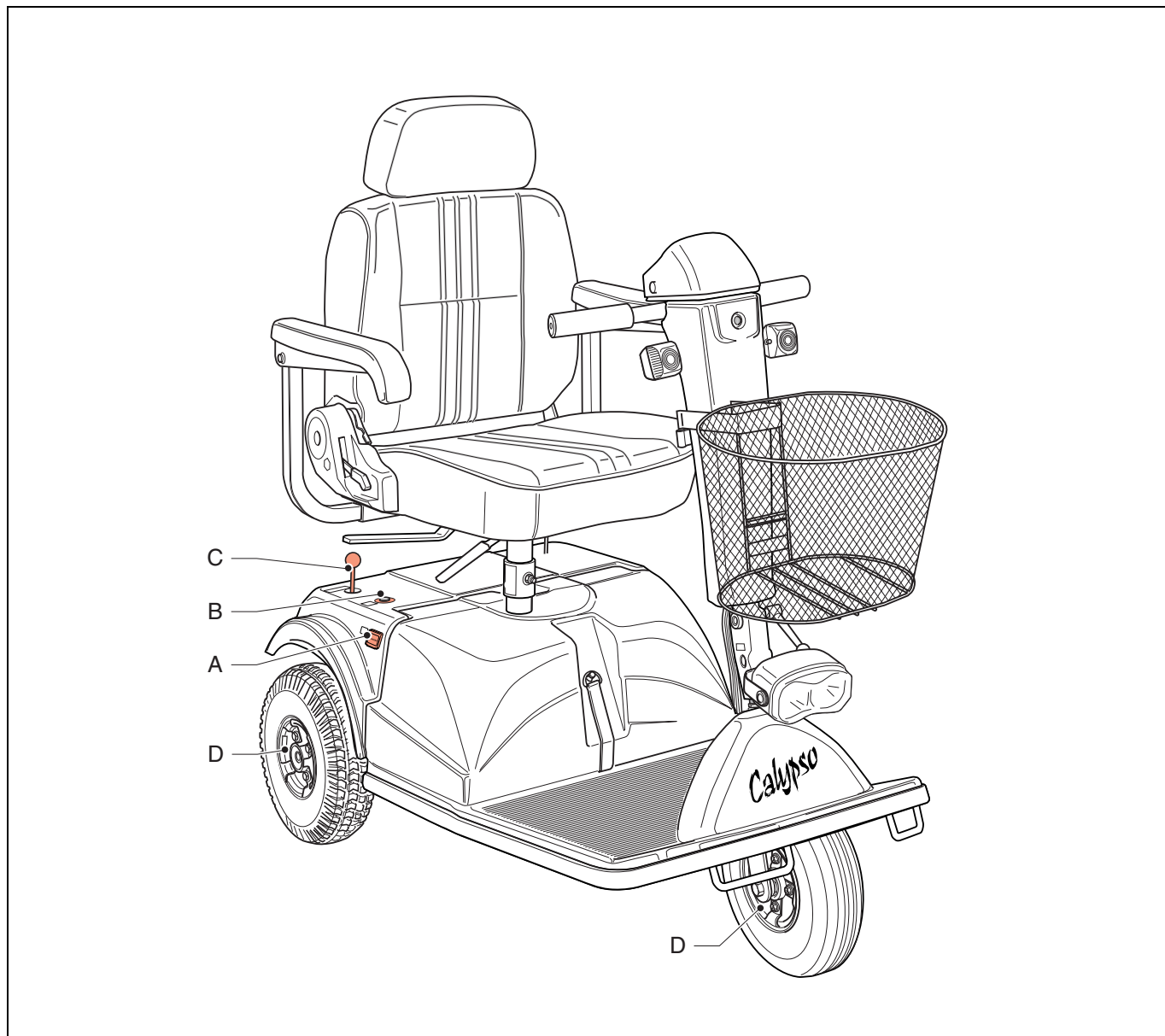
The following specifications are important when ordering parts:

- Model
- Manufacture year
- Colour
- Identification number
- Part number
- Name of the relevant part

This information can be found on the identification plate. See 'Identification of the product'.

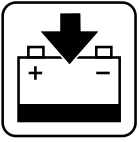
## Product reference

XXXXXX-010004000-en.doc



The product has the following decals and labels.

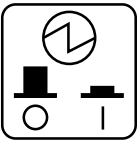
- A. Charging connection
- B. Automatic fuse
- C. Drive – Freewheel
- D. Tyre pressure wheels



**A. Charging connection**

For charging the batteries, see 'charging'.

PICPRO-010004210-en.doc



**B. Automatic fuse**

The scooter has a safety fuse feature. See 'automatic fuse' and 'faults'.

PICPRO-010004270-en.doc



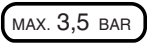
**C. Driving**

The drive of the motor is switched on:  
the scooter can be electrically driven.



**D. Pushing**

The drive of the motor is disconnected:  
the scooter can be pushed.



**E. Tyre pressure wheels**

For tyre pressure of the wheels, see 'product specification sheet'.

The following pictograms are used in this manual:

XXXXXX-010004020-en.doc



**CAUTION**

Procedures that can result - if they are not executed properly - in damage to the product, the environment, or human injury.

PICDOC-010004110-en.doc



**ATTENTION!**

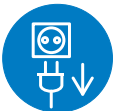
Suggestions and advice for conducting the relevant tasks or activities more easily.

PICDOC-010004120-en.doc



Consult the specified information source(s) first.

PICDOC-010004130-en.doc



Pull the charge cord out of the charging connection of the scooter before doing any maintenance on the scooter.

PICDOC-010004140-en.doc

**Available documentation**

The following technical documentation is available / required to service this scooter:

- User manual
- Service manual.

XXXXXX-010005000-en.doc

**Service and technical support**

For information concerning specific settings, maintenance or repair work please contact your dealer. He is always prepared to help you.

Ensure you have at hand:

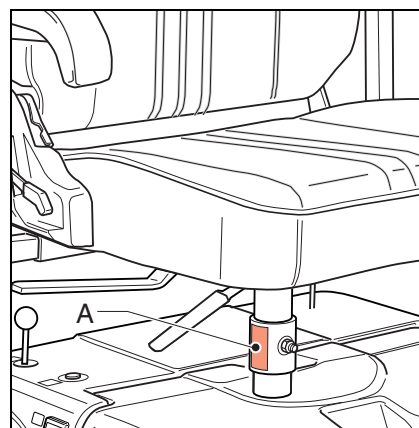
- Model
- Manufacture year
- Identification number

This information can be found on the identification plate. See 'Identification of the product'.

XXXXXX-010006000-nl.doc

**Identification plate**  
**See fig. 00000002.**

On this plate (A) information on the product can be found. See: 'Identification of the product'.

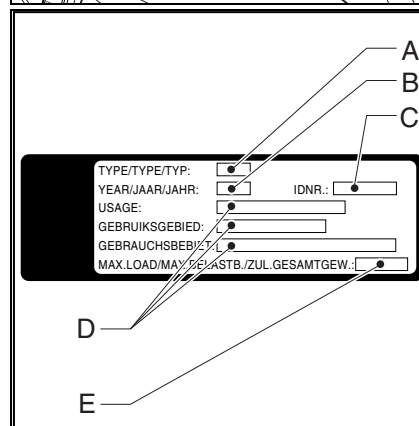


**Identification of the product**  
**See fig. 010007010.**

- A. Model
- B. Manufacture year
- C. Identification number
- D. User area indoors or outdoors
- E. Maximum load in kg

**For the place of the identification plate, see 'main components'.**

XXXXXX-010007010-en.doc



**Warranty**

Definitions of terms used in this warranty:

- Consumable part: Part that is subjected to natural wear and tear or natural contamination during normal operation within the lifetime of the product (section 9 of Handicare’s general terms and conditions of sale);
- Client: Those who purchase the product directly from Handicare;
- Corrective action: Repair, replace or refund of the product;
- Dealer: Those who re-sell the product to the User;
- Defect: Any circumstance due to which the product is not sound or fit to use, caused by a lack of quality of the material used to manufacture the product as well as the quality of the manufacturing process;
- Option: An accessory delivered by Handicare to extend the standard product model;
- Product: Product that is delivered according to brochure or contract (e.g. wheelchair, scooter, battery-charger etc.);
- Part: Part of product that can be exchanged or replaced. This can be an option, accessory, service part or consumable part;
- Returns: Product or part that needs to be returned;
- RMA-process: Process to return goods, contact Handicare’s Customer Service;
- Service part: Part that is durable and may be subjected to natural wear and tear or natural contamination during normal operation within the lifetime of the product.;
- User: Those who use the product;
- Warranty: The rights and obligations set forth in this document;
- Warranty period: The period of time during which the warranty is valid;
- Warranty provider: Handicare B.V., Vossenbeemd 104, 5705 CL Helmond, The Netherlands.

Notwithstanding the rights and obligations of Handicare, Client and User set forth in Handicare’s general terms and conditions of sale, the rights of the Client and/or User towards Handicare in case of defects are limited to the provisions set forth in this warranty. For the duration of the warranty period Handicare guarantees that the product is without defects.

In case of any defects the User is required –within two weeks after discovery of the defect- to contact the dealer. He has to complete a return form and return the product or part via the RMA-process. Handicare will, at its sole discretion, take the corrective action it seems fit under the given circumstances within a reasonable period of time (depends on nature of claim) from receipt of the completed return form. The warranty period will not be extended after a corrective action.

**Warranty period table**

**Power wheelchairs / scooters**

Description	Warranty period	Examples include, but are not limited to the parts mentioned below
<b>Frame</b>	2 years	Weldment/frame
<b>Drive system</b>	1 year	Transaxle, motor, motor brake
<b>Electronics</b>	1 year	Controller, controlling mechanism, wiring harness, electronic components
<b>Service Parts</b>	New: 1 year after invoice Repaired: 90 days after invoice	Brakes
<b>Consumable parts</b>	40 days after invoice	Wheels, push handles etc.
<b>Options/Accessories</b>	2 years	Mirror, mudguards etc. Not being service part or consumable part.

Handicare will only accept shipment costs and corrective costs related to warranty on equipment during the warranty period.

This warranty will void in case of:

- The product and/or its parts being modified or items having been added by others than Handicare;
- Changes in cosmetic appearance by use;
- Failure to observe the instructions for use and maintenance, use other than normal use, wear and tear, negligence, collateral damage by neglect of earlier symptoms, overloading, third-party accidents, non-original parts used and defects not caused by the product;
- Circumstances beyond our control (flood, fire, etc.).



This warranty does not cover:

- Tyres and inner tubes
- Batteries (covered by the battery manufacturer's warranty).

Clients and/or Users have legal (statutory) rights under applicable national laws relating to the sale of consumer products. This warranty does not affect statutory rights you may have nor those rights that cannot be excluded or limited, nor rights against the entity from whom the product was purchased. Clients may assert any rights they have at their sole discretion.

### Used scooters and the environment



If your scooter has become superfluous or needs to be replaced, it can usually be taken back by your dealer.

If this is not possible, please contact your local authorities for the possibilities of recycling or an environmentally friendly way of disposing of the used materials.

For the production of the scooter several plastics and metals have been used. The scooter also contains electronic components that must go to electronic waste.

Used batteries belong to chemical waste.

### Use according to purpose<sup>1</sup>

The scooter Calypso was designed for the transport of persons to a weight of maximally 125 kg (344 lbs). Your dealer should give you good user's instructions before you can independently operate the product and participate in traffic.

You must be able to correct the consequences of actions while driving the Calypso.

Consider operating the Calypso scooter under the monitoring of an experienced dealer during first operations.

The Calypso scooter is not a motorized vehicle in the traffic regulations sense.

The Calypso has a maximum speed of 8 or 10 km/h, depending on the type.

The Calypso has been designed for use in and around the home, on sidewalks, footways, and bike-ways.

If you use the scooter for other purposes than those for which it is intended, Handicare accepts no liability whatsoever for damage or injury resulting from such use other than that for which the scooter was developed and designed.

<sup>1</sup> 'Use according to purpose' as established in EN 292-1 is the use for which the technical product is suitable according to the statement of the manufacturer, including his instructions in the sales brochure. In case of doubt this is the use that follows from the construction, execution and function of the product. Use according to purpose also includes taking into consideration the instructions in the owner's manual.

### Approval

The product meets the following standards:

1. Essential standards as specified in Annex 1 of the EU directive 93/42 EEC.
2. NEN-EN 12182 Technical tools for the handicapped – General standards and testing methods October 1997.
3. NEN-EN 12184 Electrically driven wheelchairs, scooters and associated charging equipment – Standards and testing methods, April 1999.
4. The Beatle is classified according to EN12184 in class A.
5. The Puma is classified according to EN12184 in class B.
6. ISO 7176-8 Standards and test methods for impact, static, and fatigue strength, July 1998.
7. ISO 7176-14 Standards and test methods for controller systems of electrically driven wheelchairs 1997.
8. ISO 7176-15 Climate test for electrically driven wheelchairs.
9. ISO 7176-16 Standards for resistance to fire, May 1997.
10. ISO 7176-19 Crash test.

The quality is guaranteed by an independent institution that controls the fulfilment of the above mentioned standards.

### CE declaration

The product is in conformity with the provisions of the Medical Devices Directive and thus has CE marking.

## 1 General safety regulations and instructions

Handicare accepts no liability whatsoever for damage or injury caused by the failure to (strictly) adhere to the safety guidelines and instructions or else due to carelessness during the use and cleaning of the scooter and possible accessories. Depending on the specific work circumstances or the accessories used, additional safety instructions may be required. Please contact your dealer immediately if you observe a potential danger during the use of the product.



*The user of the scooter (see under 'use according to purpose') is at all times fully responsible for the fulfilment of the locally applicable safety regulations and guidelines.*

### 1.1 Decals and instructions on the scooter

Signs, symbols and instructions placed on this scooter comprise part of its safety facilities. They must never be covered or removed and must remain present and clearly legible throughout the entire lifespan of the scooter. Immediately replace or repair illegible or damaged signs, symbols and instructions. Contact your dealer with regard to this.

### 1.2 Technical specifications

The technical specifications may not be changed.

### 1.3 Modifications

Modification of (parts of) this product is not permitted.

### 1.4 Safety

To avoid accidents and undesirable situations, it is of great importance to pay attention to the following safety instructions.



- **Pay extra attention to riding on slopes:**
- **Do not drive the Calypso up a slope with an angle greater than 6°.**
- **Slopes always drive slowly and with awareness.**
- **Do not drive down slopes with loose gravel or a sandy surface, because one of the back wheels might slip.**

- **Do not turn on a slope.**

- **Never take curves at full speed. Decrease speed on the approach and on the curve.**



- **Be sure that no items of clothing hang loose. These could become caught between the wheels.**



- **Adjust your riding according to the circumstances:**
- **Drive carefully on slippery roads, resulting from rain, ice, or snow!**
- **Avoid the Calypso from coming into contact with sea water. Sea water is caustic and may damage the scooter.**

- **Avoid the Calypso from coming into contact with sand. Sand can affect the moving parts of the scooter, resulting in unnecessarily rapid wear.**

- **Never operate the scooter when you are under the influence of drugs, alcohol or medication that could affect your driving ability.**
- **You must have sufficient visual acuity to be able to drive safely in the scooter.**
- **You are obliged to put the lights on when the view is hindered.**



- **The standard version of your scooter was tested according to the strictest EMC requirements. Mobile telephones have no influence on the driving behaviour of the scooter. When using a mobile telephone in the vicinity of a scooter with special adaptations, you are advised to first switch off the scooter.**
- **Your scooter may influence electromagnetic fields such as alarm systems.**
- **If the electronics of the scooter is not properly screened off, this may affect sensitive electrical appliances, such as shop alarms and garage openers. The scooter has been tested for this. Should any problems of this nature occur, please report these to your supplier immediately.**

## 2 Adjustment options

XXXXXX-010500000-en.doc

### 2.1 Seat adjustments

The Calypso seat offers a number of adjustment options to increase the sitting and driving comfort.

The following may be adjusted:

- A. Seat height
- B. Seating width
- C. Arm-rests
- D. Steering column
- E. Headrest

#### 2.1.1 Adjusting the seat height

The whole seat can be readjusted in height. This adjustment should be made by the dealer.

#### 2.1.2 Adjusting the seat width

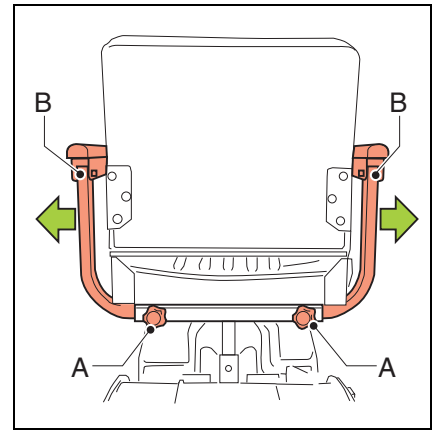
See fig. 000000021.

The space between the two arm-rests can be adjusted according to your wishes. The holder for the arm-rests can be shifted in width on both sides

Do the adjustment, or have it done by someone, and then sit down in the seat.

The width adjustment must be done as follows:

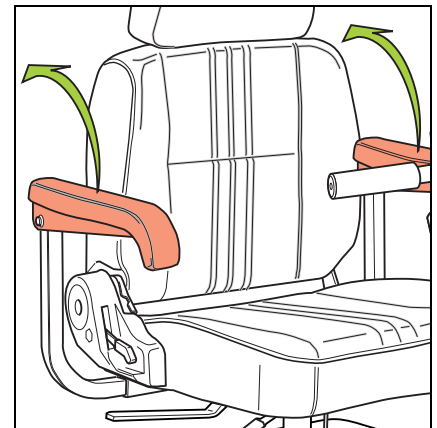
- Loosen the caps (A) on both sides.**
- Slide the arm-rests (B) to the desired width.**
- Firmly tighten both caps again.**



#### 2.1.3 Adjusting the arm-rest

See fig. 000000022.

Both arm-rests can be folded up completely.

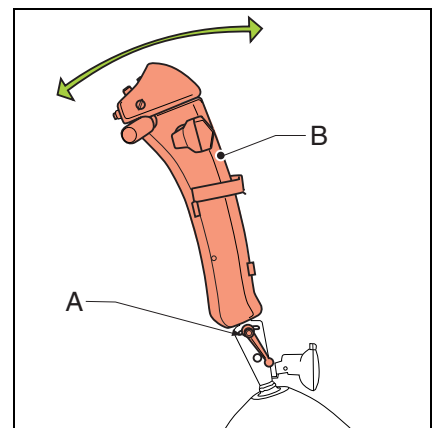


### 2.2 Adjusting the steering column

See fig. 000000023.

The angle of the steering column can be adjusted as follows:

- Loosen the locking handle (A) by turning it to the left (anti-clockwise).**
- Push the steering column (B) forward or backward until the ideal position is reached.**
- Tighten the locking handle (A) again by turning it to the right.**
- This will lock the steering column.**



### 3 Programmer

A programmer is necessary for programming the Calypso. A programmer will always be delivered with a user manual.

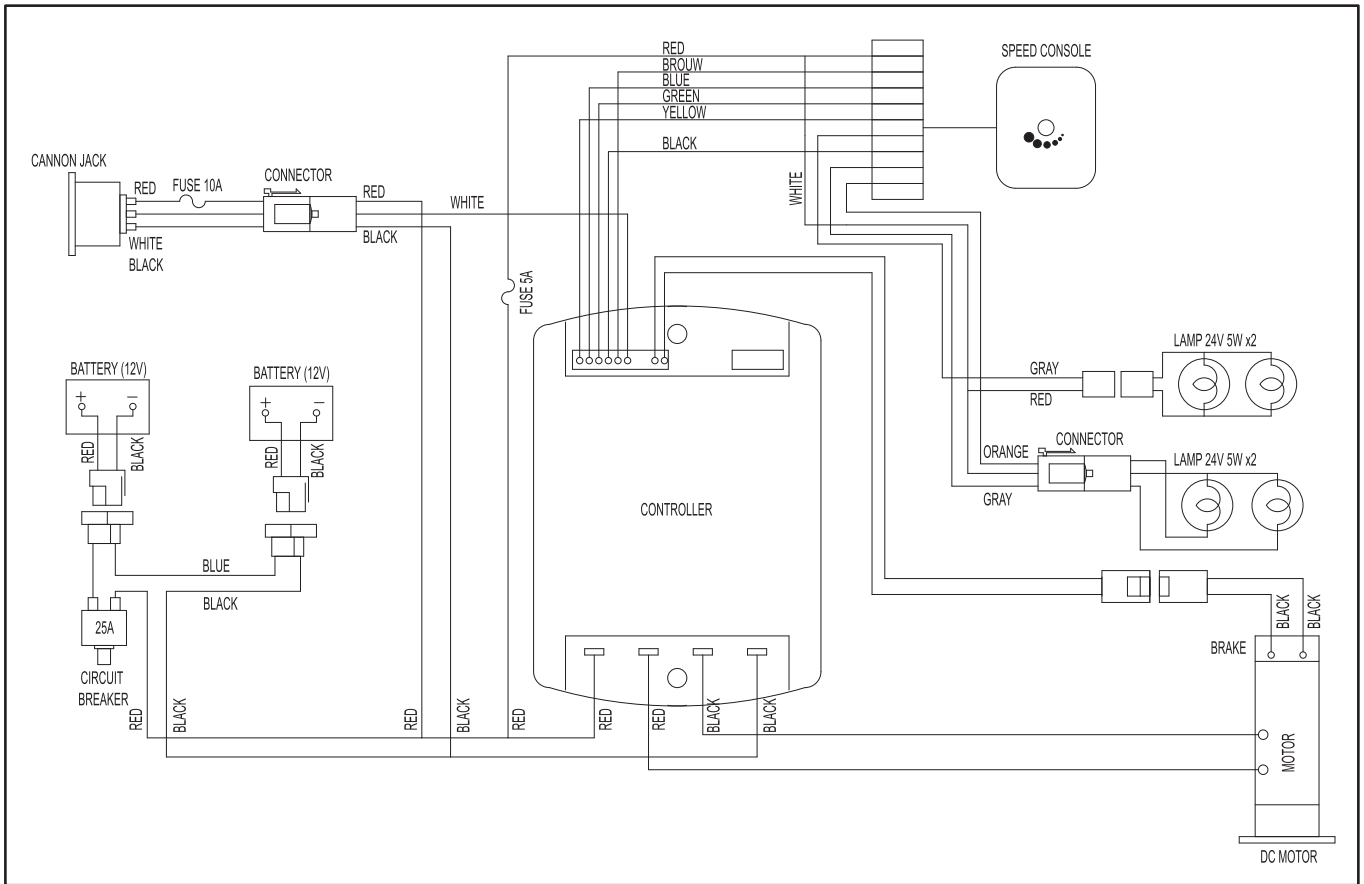
The standard adjustments are stated in the table below.

Function SP1B	Programming < 2002	Programming > 2002	
	8 km/hr	8 km/hr	10 km/hr
Forward acceleration	13	25	25
Forward deceleration	8	15	15
Reverse acceleration	15	25	25
Reverse deceleration	14	20	20
Forward speed	100	100	100
Reverse speed	40	45	40
Invert throttle polarity	NO	YES	YES
Power down timer	0	0	0

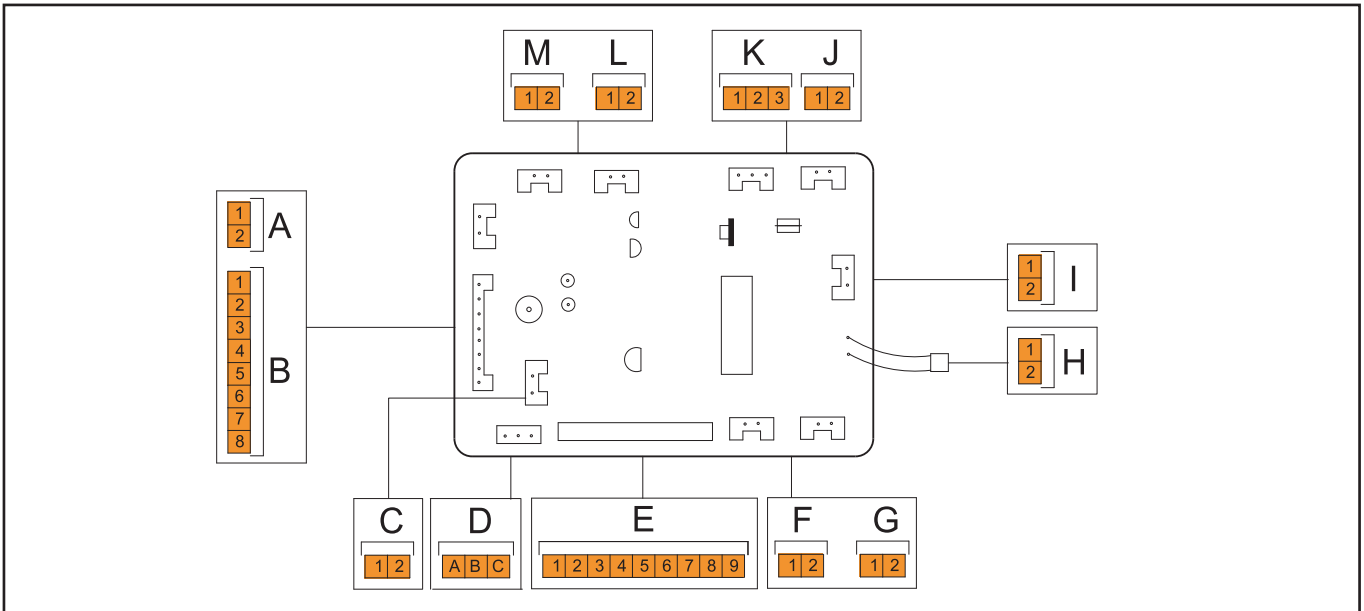
Engineering menu SP1B	Programming < 2002	Programming > 2002	
	8 km/hr	8 km/hr	10 km/hr
Current limit	60	60	60
Motor compensation	95	90	80
Hold factor	240 %	152 %	152 %
Mid current	15,5 / 0 %	15 / 0 %	15 / 0 %
Brake time	40	40	40
ISO test	OFF	ON	ON
Inhibit polarity	LO	LO	LO
Bridge hold time	20	20	20
Throttle gain	100 %	100 %	100 %
Pulse reverse alarm	YES	YES	YES
Wig-wag throttle	YES	YES	YES
Low battery flash inhibit	NO	NO	NO
Throttle deadband	15 %	15 %	15 %
Output voltage	24	24	24
TruCharge cable resistance	45	45	45
TruCharge calibration	100	100	100

Programmer	Code
SP1-B	10237

3.1 Electrical diagram



3.2 Connections printed circuit board



For the connections of the printed circuit board, see the table below.

Nr.	Cable function	Number of the connections	Colour of the cables
A	Horn	-	Black
		+	Red
B	Console main connector	H1	Black
		M-	Brown
		M+	Red
		H2	Orange
			NC
		V1	Green
		V2	Blue
			NC
C	Key switch	1	White
		2	Yellow
D	Speed control	A	Black
		B	Blue
		C	Red
E	Controller connection	1	Red
		2	Purple
		3	Blue
		4	Green
		5	Yellow
		6	Grey
		7	Black
		8	White
		9	Orange
F	Lighting switch	S	Black
		W	Red
G	Front light	1	Black
		2	Red
H	Fuse connector	1	Black
		2	Red
I			NC
			NC
J	Hazard lights	1	Black
		2	Red
K	Turn indicator switch	1	Red
		2	White
		3	Green
L	Indicator right	1	Black
		2	White
M	Indicator left	1	Black
		2	White

## 4 Technical specifications

XXXXXX-010900000-nl.doc

### 4.1 Product specifications

Manufacturer:	Handicare
---------------	-----------

XXXXXX-010901000-nl.doc

#### 4.1.1 Calypso

Technical specification according to ISO 7176-15

Model	Calypso 3-wheel version
	Calypso 4-wheel version
Maximum user's weight	125 kg

Description	Min.	Max.
Total length	1180 mm	
Total width	620 mm	
Total weight incl. batteries	78 – 86 kg <sup>1</sup>	82 -90 kg <sup>1</sup>
Transport weight heaviest part	22 kg	
Static stability downward	9°	
Static stability upward	9°	
Static stability sideways	9°	
Energy consumption: theoretic maximum distance	38 km <sup>2</sup>	
Dynamic stability on slopes	6°	
Climbing capacity for obstacles	50 mm	
Maximal speed forward	8 / 10 km/h	
Minimum brake distance from maximum speed	1500 mm	
Seat angle	5°	
Effective seating depth	440 mm	
Effective seating width	440 - 580 mm	
Sitting height from the front	460 - 485 - 510 - 535 mm	
Back angle	95° - 130°	
Back height	400 mm	

<sup>1</sup> Values given are applicable to the use of a 30 Ah and 40 Ah battery, respectively.

<sup>2</sup> Tested according to EN12184 with 40Ah batteries.

Description		
Minimum radius	1030 mm	1610 mm <sup>3</sup>
Capacity to drive over obstacles	50 mm	
Ground clearance	120 mm	
Turning space	1585 mm	1780 mm <sup>3</sup>

Test data	
Weight test dummy	125 kg

Operating force	
Control force	< 60 N
Resetting automatic fuse	< 60 N
Electronic switches	< 15 N
Parking brake	< 60 N
Inserting charging plug	< 60 N

Technical data	
Diameter front wheel	260 x 85 mm
Diameter drive wheels	260 x 85 mm
Tyre pressure wheels	350 kPa (3.5 Bar)



<b>Batteries</b>	
Maximum dimensions batteries	210 x 175 x 180 mm
Weight scooter without batteries	78 kg   82 kg <sup>3</sup>
Battery capacity	30 Ah/5,5A-5h 40 Ah/6.8A-5h
Maximum permissible charging voltage	13.6 V
Maximum charging current	5 A
Connector type	A DIN 72311
Touch up pencil	Red 951558 motip Green 953617 motip

<sup>3</sup> Applicable to Calypso 4-wheel version.

## 4.2 Approval

The product meets:

1. NEN-EN 12182 Technical tools for the handicapped - General standards and testing methods October 1997.
2. NEN-EN 12184 Electrically driven wheelchairs, scooters and associated charging equipment - Standards and testing methods April 1999.
3. The Calypso 3-wheel scooter is classified according to EN12184 (1999) in class A & B.
4. The Calypso 4-wheel scooter is classified according to EN 12184 (1999) in class B.
5. ISO 7176-8 Requirements and test methods for impact, static, and fatigue strength July 1998.
6. ISO 7176-9 climate tests for electric wheelchairs & scooters.
7. ISO 7176-14 Standards and test methods for controller systems of electrically driven wheelchairs 1997.
8. ISO 7176-16 Requirements of resistance to fire May 1997.

### 5 Use of the parts lists

This document is meant as a reference book to be able to order parts for the scooter as shown on the front.

#### How to order:

To order parts please specify:

Serial number (see the identification plate).

Group (to which the relevant part belongs).

Article number.

Number of parts required.

Description (in the relevant language).

Dimensions (if applicable).

#### Remark:

- If a part does not have a position number, it means that the relevant part cannot be bought separately. The relevant part is part of the composition that is shown. Only the composition can be ordered, so it must be replaced in its entirety.
- Boxed position numbers refer to the relevant drawing.

#### Order address:

Please send orders by post or fax to your supplier.

#### Service technicians:

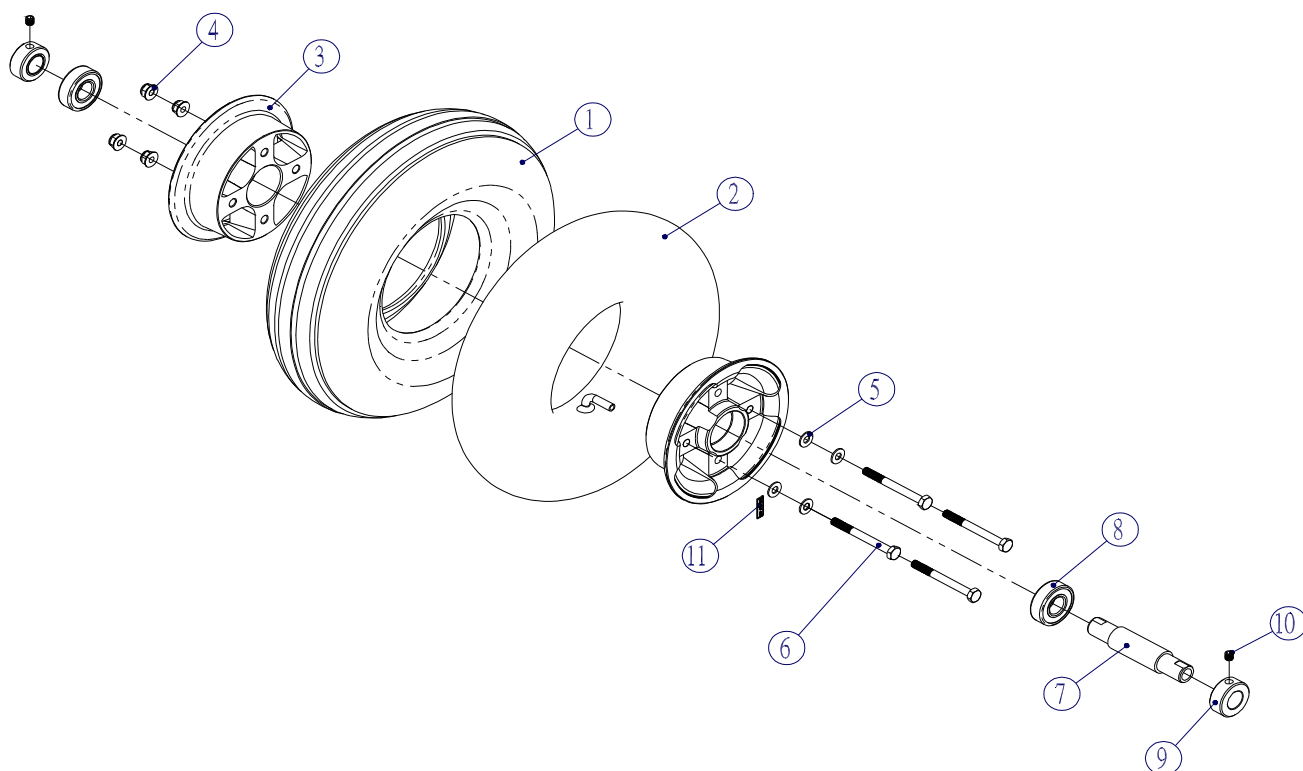
Repairs may only be done by trained and authorized service technicians.

In the execution of their work they are at all times fully responsible for the fulfilment of locally applicable safety guidelines and standards.

Temporary employees and persons in training may only execute repair and replacement work under the supervision of an authorized service technician.

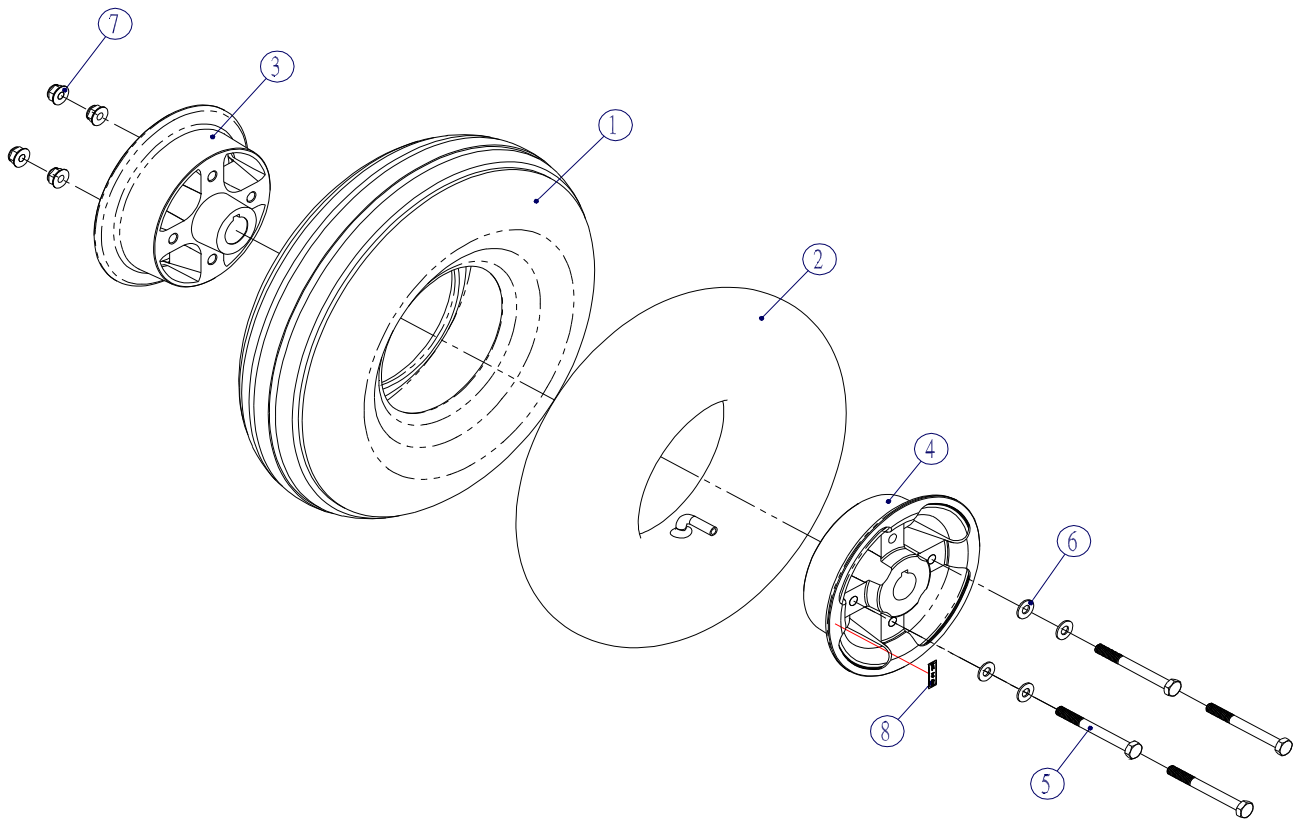
XXXXXX-020904000-en.doc

## 001: Front tyre assy (3w)



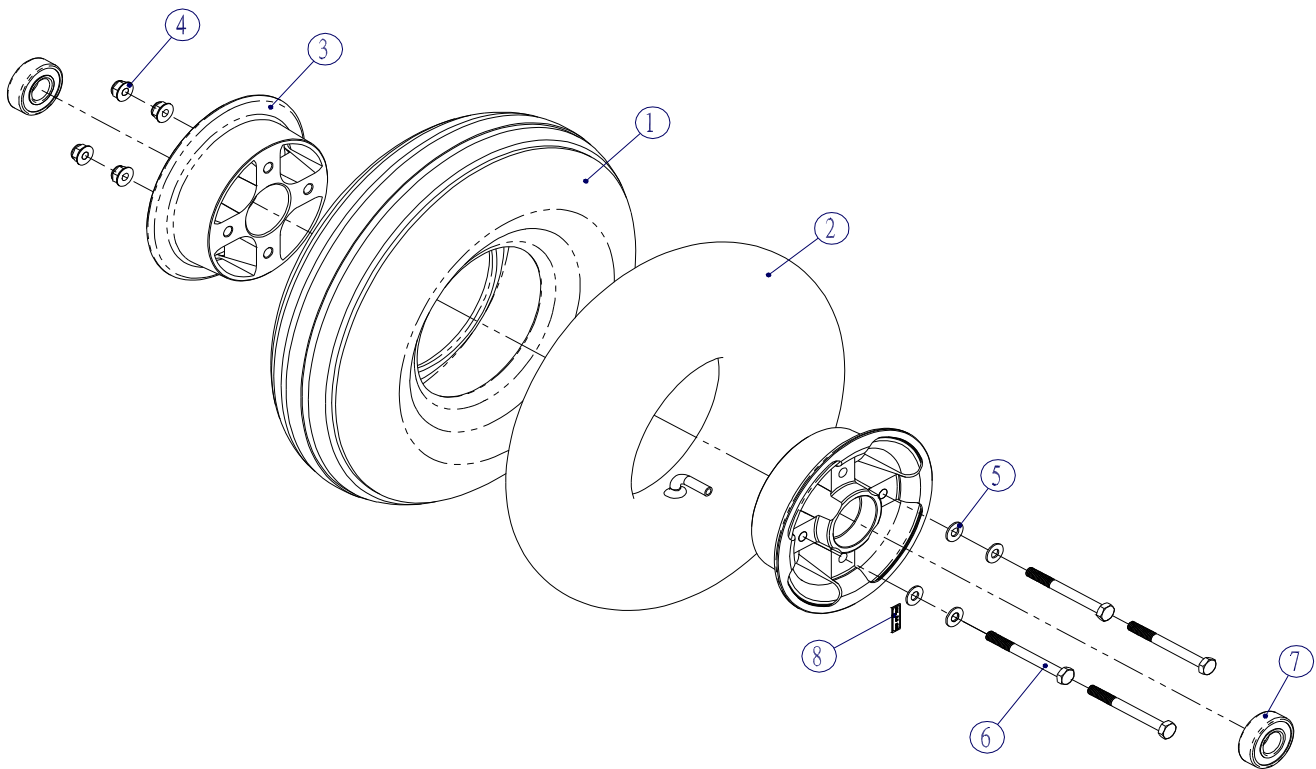
Pos	Article number	Units	Description	
1	05010.4100	1	Tyre	
2	05010.4000	1	Tube	
3	143001	2	Outer rim	
4	00000.1701	4	Lock nut M6	
5	00000.2302	4	Flat washer M6	
6	00000.4104	4	Hex bolt M6x60	
7	131905	1	Axle front wheel	
8	4B2006	2	Bearing 6202ZZ	
9	133002	2	Collar front wheel	
10	00000.3500	2	Set screw M6x5	
11	00001.1463	1	Label max 3.5 bar	
-	B24F02	1	Front tyre assy (3w)	

002: Rear tyre assy (3-4w)



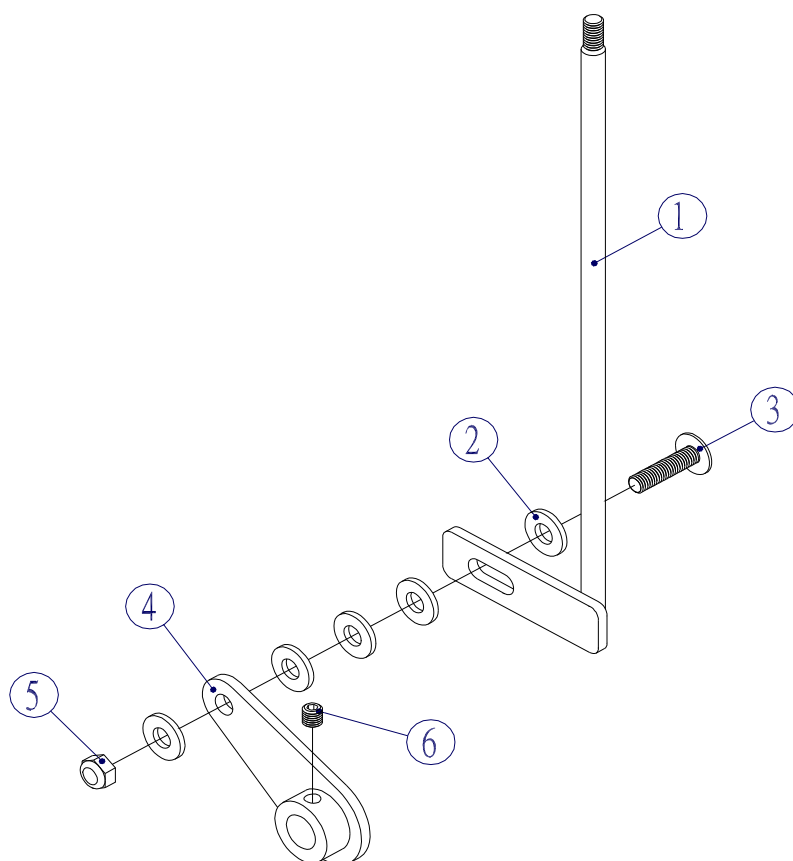
Pos	Article number	Units	Description
1	1008952	2	Tyre
2	05010.4000	2	Tube
3	143102	2	Inner rim
4	143003	2	Outer rim
5	00000.4104	8	Hex bolt M6x60
6	00000.2302	8	Flat washer M6
7	00000.1701	8	Lock nut M6
8	00001.1463	2	Label max 3.5 bar
-	B24R02	2	Rear tyre assy

## 003: Front tyre assy (4w)



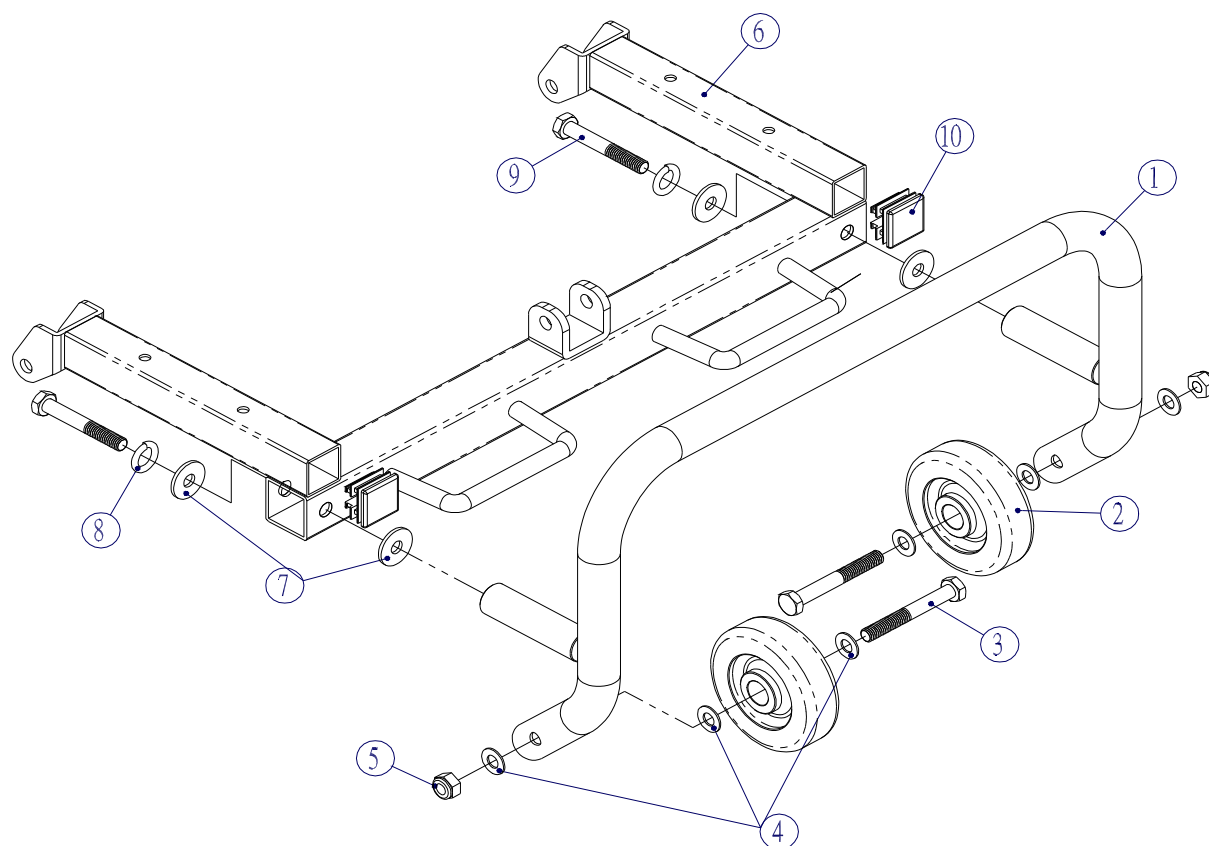
Pos	Article number	Units	Description
1	05010.4100	2	Tyre
2	05010.4000	2	Tube
3	143001	4	Outer rim
4	00000.1701	8	Lock nut M6
5	00000.2302	8	Flat washer M6
6	00000.4104	8	Hex bolt M6x60
7	4B2006	4	Bearing 6202ZZ
8	00001.1463	2	Label max 3.5 bar
-	B24F02	2	Front tyre

## 004: Free wheel lever assy



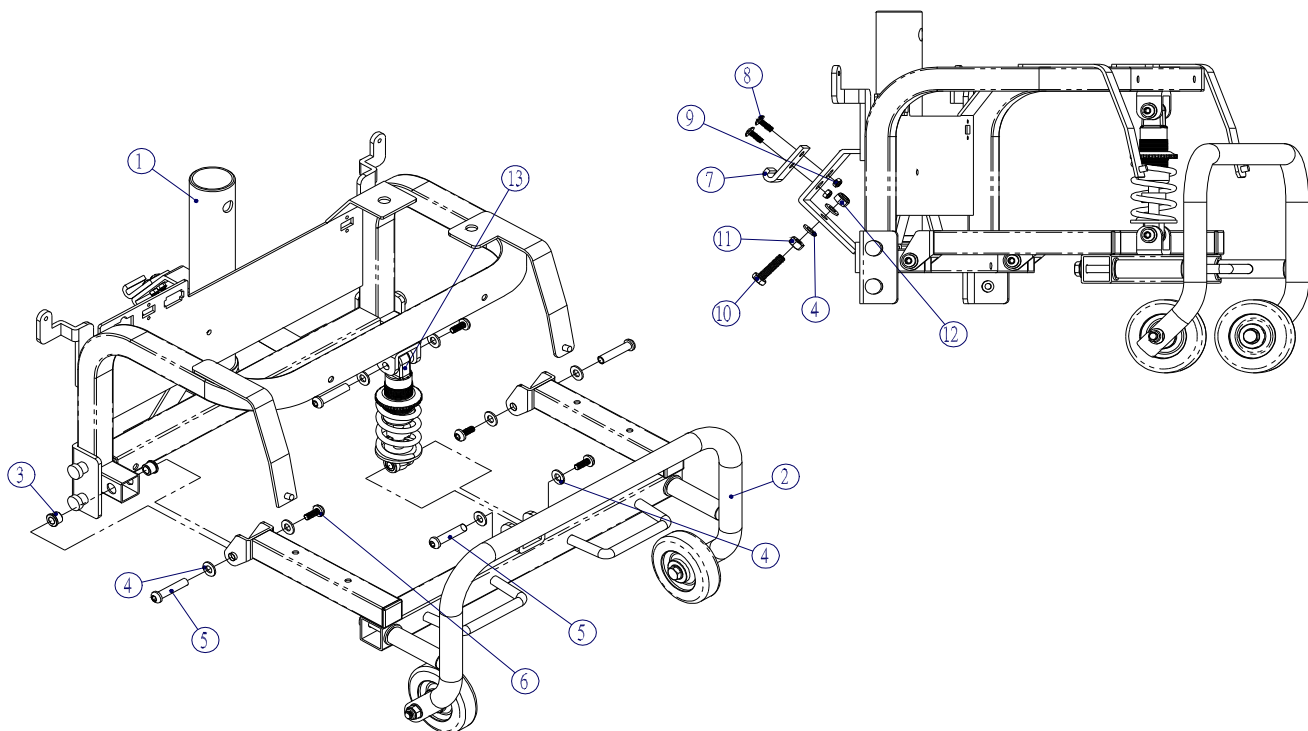
Pos	Article number	Units	Description
1	No spare part	1	Free wheel handel
2	No spare part	5	Plastic washer
3	00000.3207	1	Screw M5x20
4	No spare part	1	Free wheel lever
5	00000.1700	1	Lock nut M5
6	00000.3503	1	Set screw M5x6
-	105.00091.000	1	Free wheel lever assy

## 005: Rear frame assy



Pos	Article number	Units	Description
1	C35001	1	Rear bumper
2	225001	2	Plastic wheel
3	001.03010.002	2	Hex bolt M8x65
4	00000.2003	6	Flat washer M8
5	00000.1702	2	Lock nut M8
6	110.00121.000	1	Rear frame bottom
7	00000.2103	4	Flat washer M8 3D
8	00000.2203	2	Spring washer M8
9	00000.4112	2	Hex bolt M8x55
10	No spare part	2	Plug

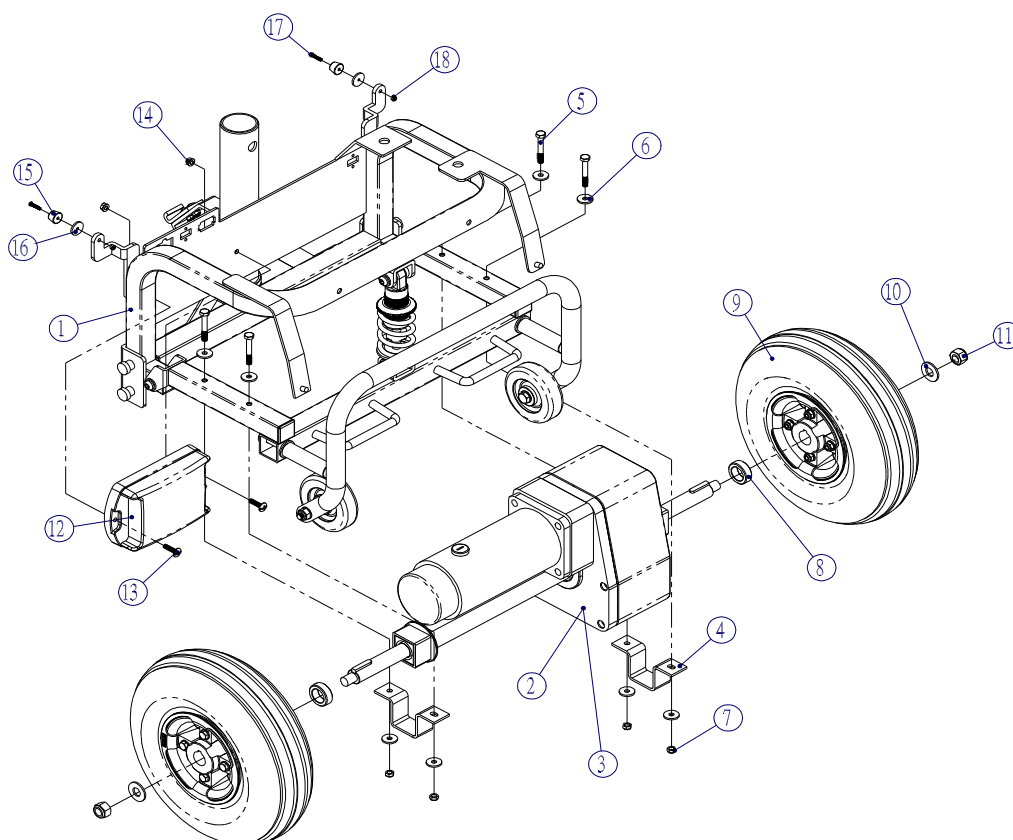
## 006: Rear chassis assy



Pos	Article number	Units	Description
1	110.00111.000	1	Rear frame top
2	See 005	1	Rear frame bottom assy
3	110.00131.000	4	Bush
4	00000.2003	10	Flat washer M8
5	No spare part	4	Screw M6xP1.0x38
6	No spare part	4	Screw M6xP1.0x13
7	92500040	1	Front rear latch plate
8	00000.3206	2	Screw M5x16
9	00000.1700	2	Lock nut M5
10	4.10021	1	Hex bolt M8x30
11	00000.1502	1	Nut M8
12	00000.1702	1	Lock nut M8
13	013.00061.000	1	Suspension spring

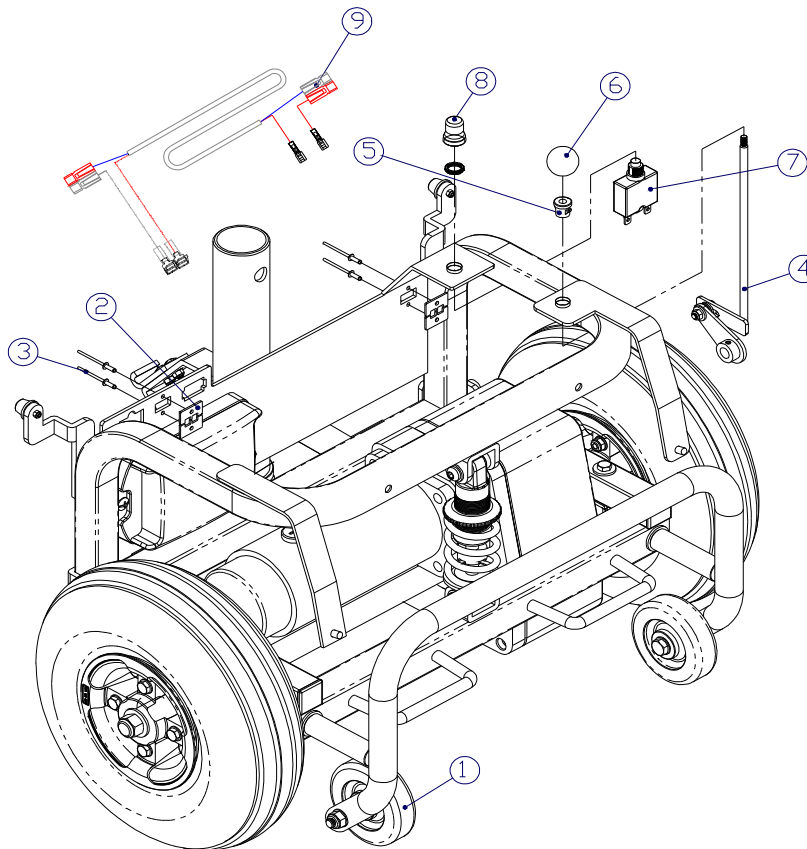


## 007: Rear section assy



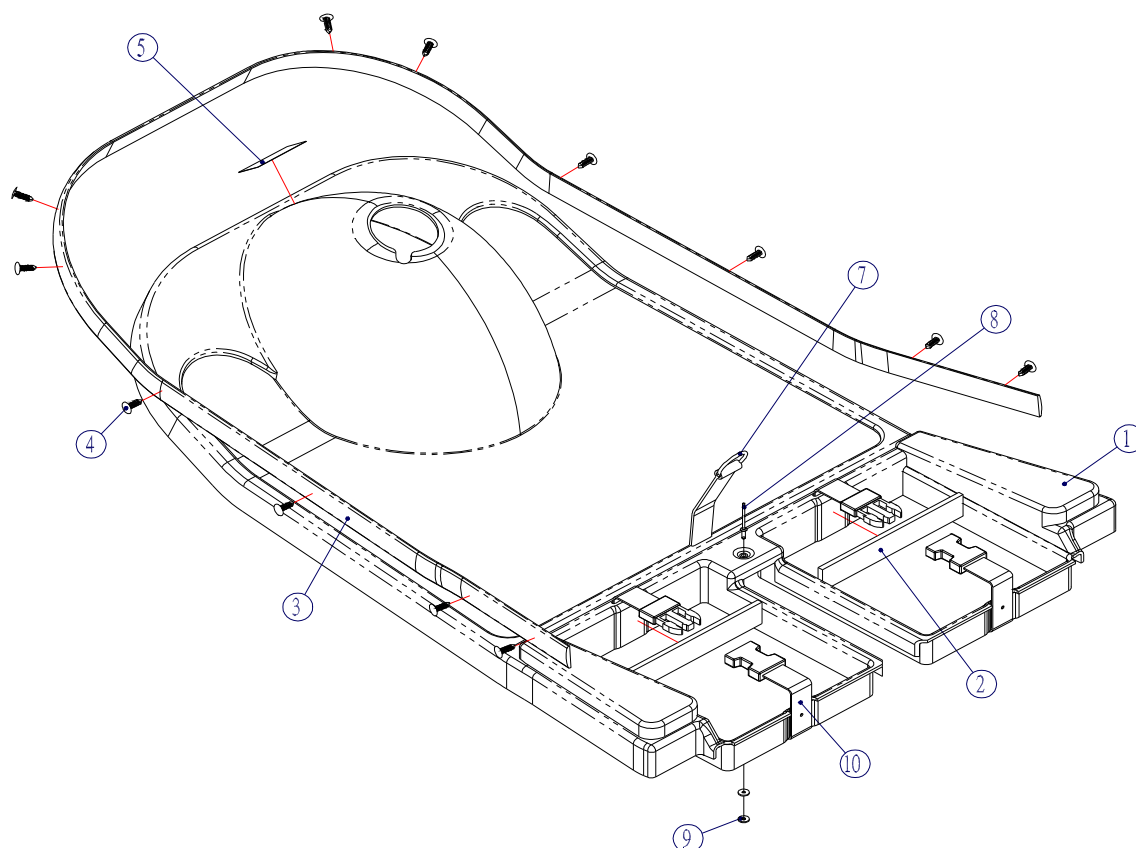
Pos	Article number	Units	Description
1	See 006	1	Rear chassis assy
2	100.00021.000	1	Transaxle assy 8K
2	100.00011.000	1	Transaxle assy 10K
2	100.00031.000	1	Transaxle assy 12K (Calypso HP)
4	113115	2	Axle holder
5	-	4	Hex bolt M6x40
6	00000.2102	5	Flat washer M6 3D
7	00000.1701	4	Lock nut M6
8	133501	2	Rear collar
9	B24R02	2	Rear tyre assy
10	00000.2005	2	Flat washer 12
11	00000.1704	2	Lock nut M12
12	162.00041.000	1	Controller Solo 60A
13	00000.3207	2	Screw M5x20
14	00000.1700	2	Nut M5
15	235001	2	Rear shroud pad
16	No spare part	2	Plastic washer
17	No spare part	2	Screw m3x15
18	No spare part	2	Lock nut M3
-	1009289	1	Splash water cover for controller

008: Rear section assy



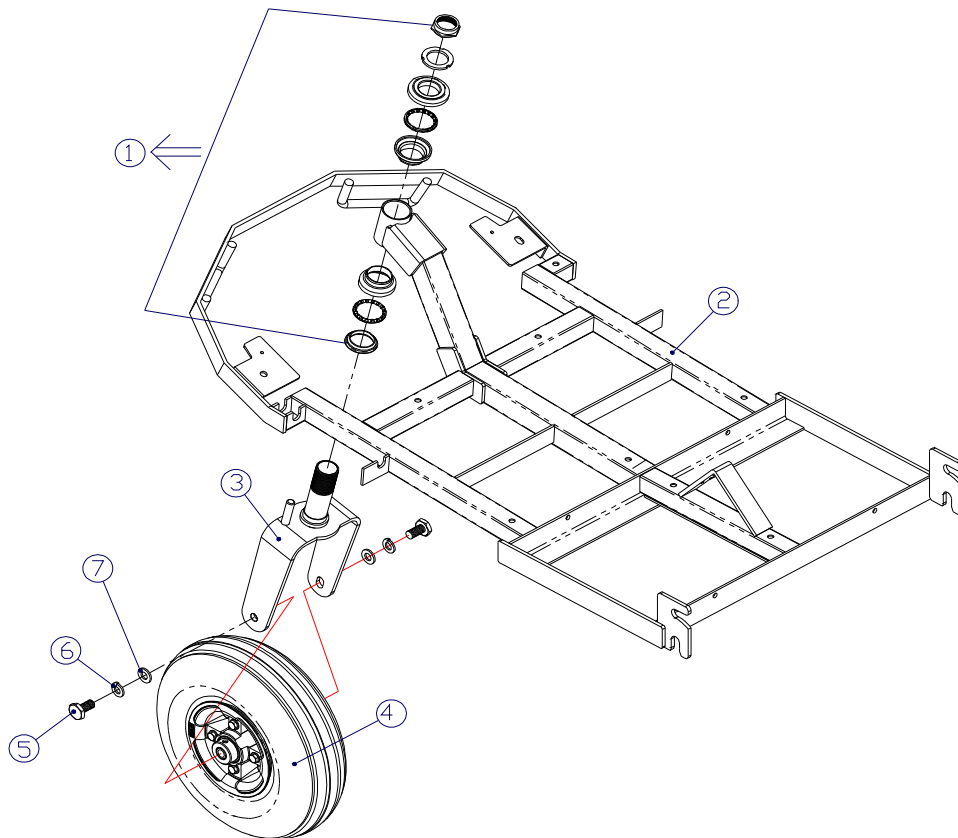
Pos	Article number	Units	Description
1	See 007	1	Rear section pro assy
2	112401	4	Power connector assy
3	No spare part	4	Rivet pop 4-4
4	105.00091.000	4	Free wheel lever assy
5	221704	1	Swing lever bushing
6	222003	1	Free wheel lever knob
7	321101	1	Circuit breaker 25A
8	336102	1	Cap of circuit breaker
9	055.00311.000	1	Battery parallel

## 009: Front floorpan assy



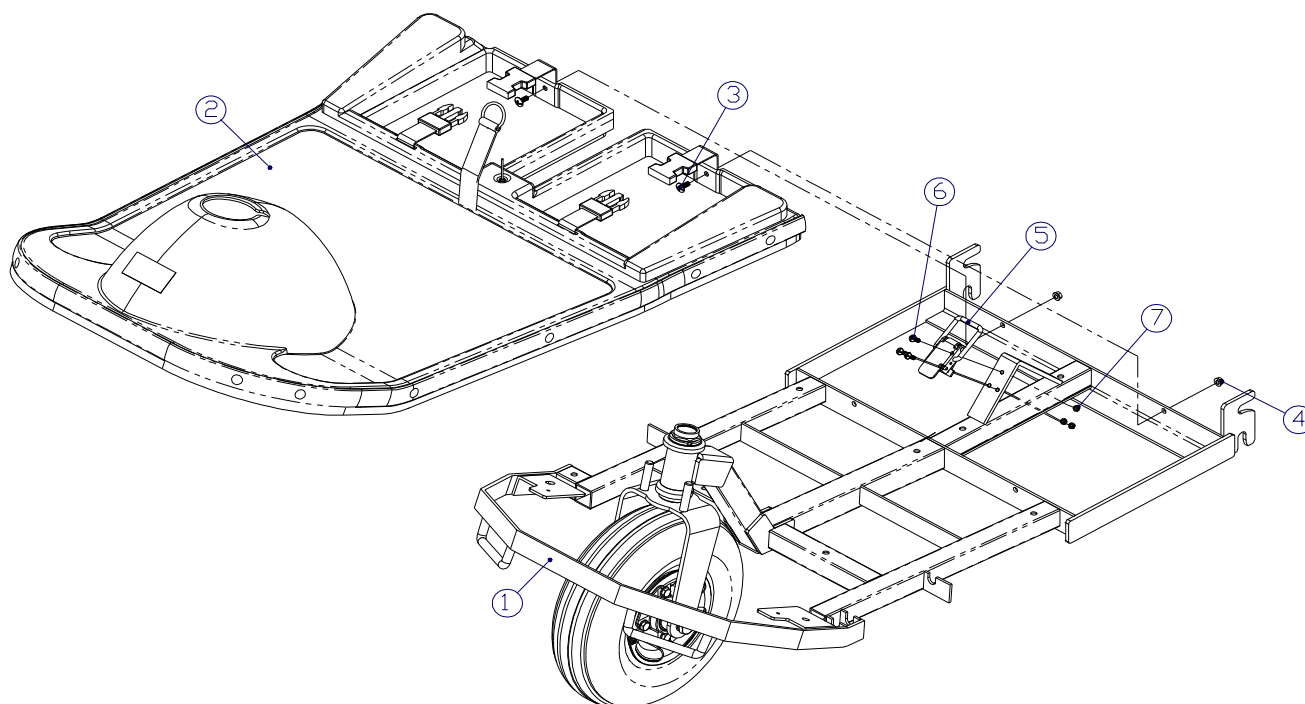
Pos	Article number	Units	Description
1	No spare part	1	Front cover
2	126.00081.000	2	Battery bumper pad
3	-	-	-
4	No spare part	12	Snap button
5	008.00000.301	1	Label Calypso
6	-	-	-
7	1001276	1	Holding elastic band
8	No spare part	1	Rivet pop 4-4
9	00000.2009	2	Flat washer M3
10	243001	2	Battery strap
-	052.00361.000	1	Front floorpan assy 3w green + mat
-	B61004	1	Front floorpan assy 3w red + mat
-	1003539	1	Front floorpan assy 3w silver + mat

010: Front frame assy (3w)



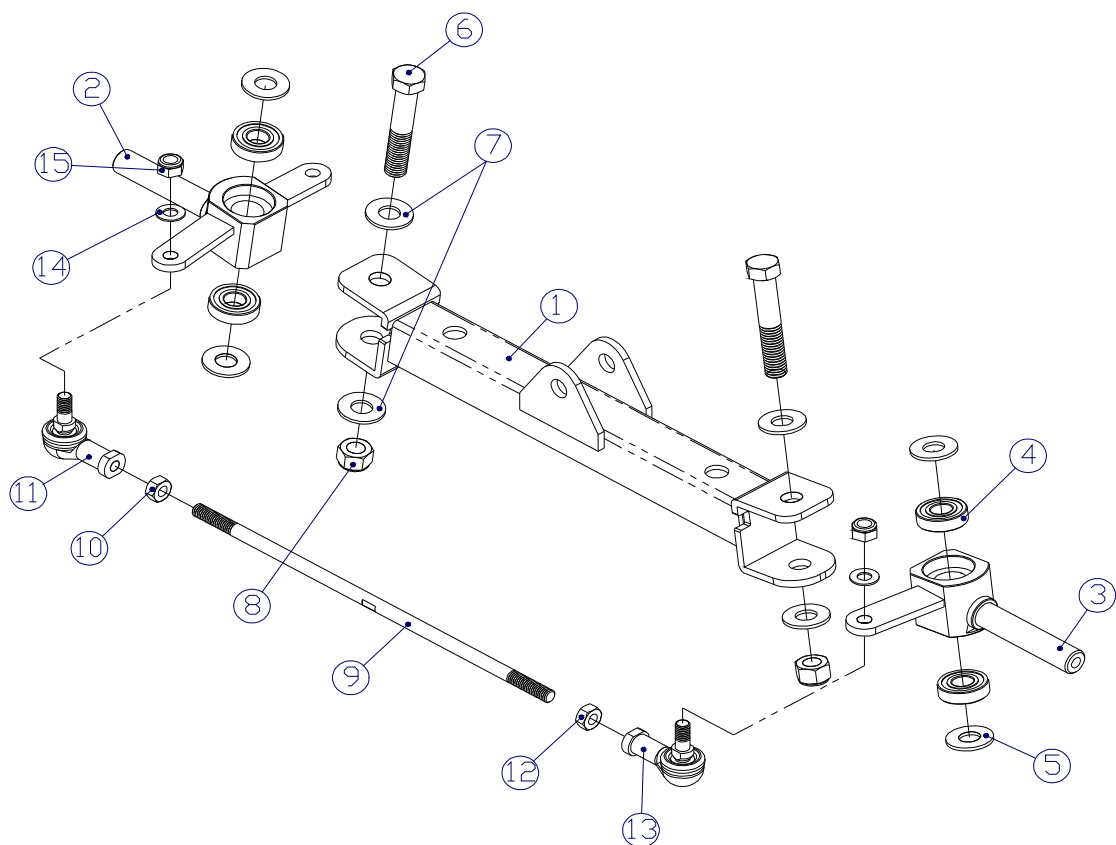
Pos	Article number	Units	Description	
1	015.07000.001	1	Head set bearing	
2	11321030	1	Front frame 3W	
3	C11003	1	Fork	
4	B24F02	1	Front tyre assy	
5	00000.4315	2	Screw M10x20	
6	00000.2204	2	Spring washer M10	
7	00000.2004	2	Flat washer M10	

## 011: 3w scooter assy

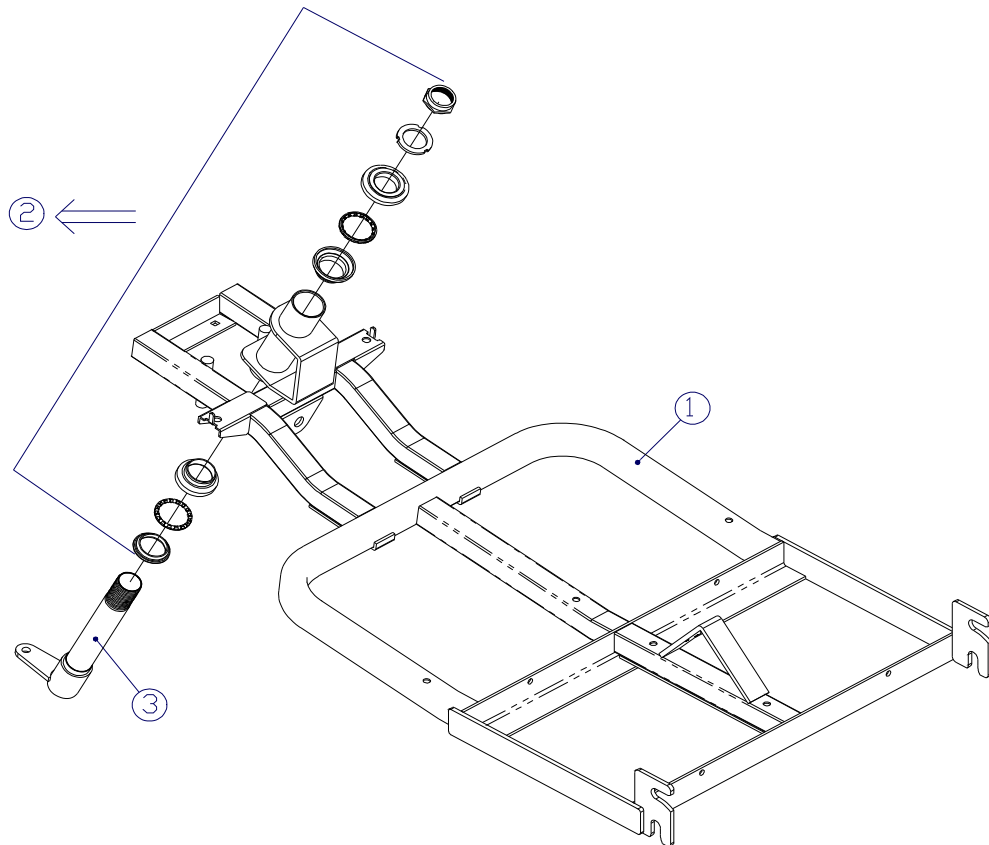


Pos	Article number	Units	Description
1	See: 010	1	Front frame assy
2	See: 009	1	Front floorpan assy
3	00000.3291	2	Screw M5x12
4	00000.1700	2	Lock nut M5
5	001.20020.005	1	Latch
6	00000.3218	3	Screw M4x12
7	00000.1705	3	Lock nut M4

## 012: Front axle (4w)

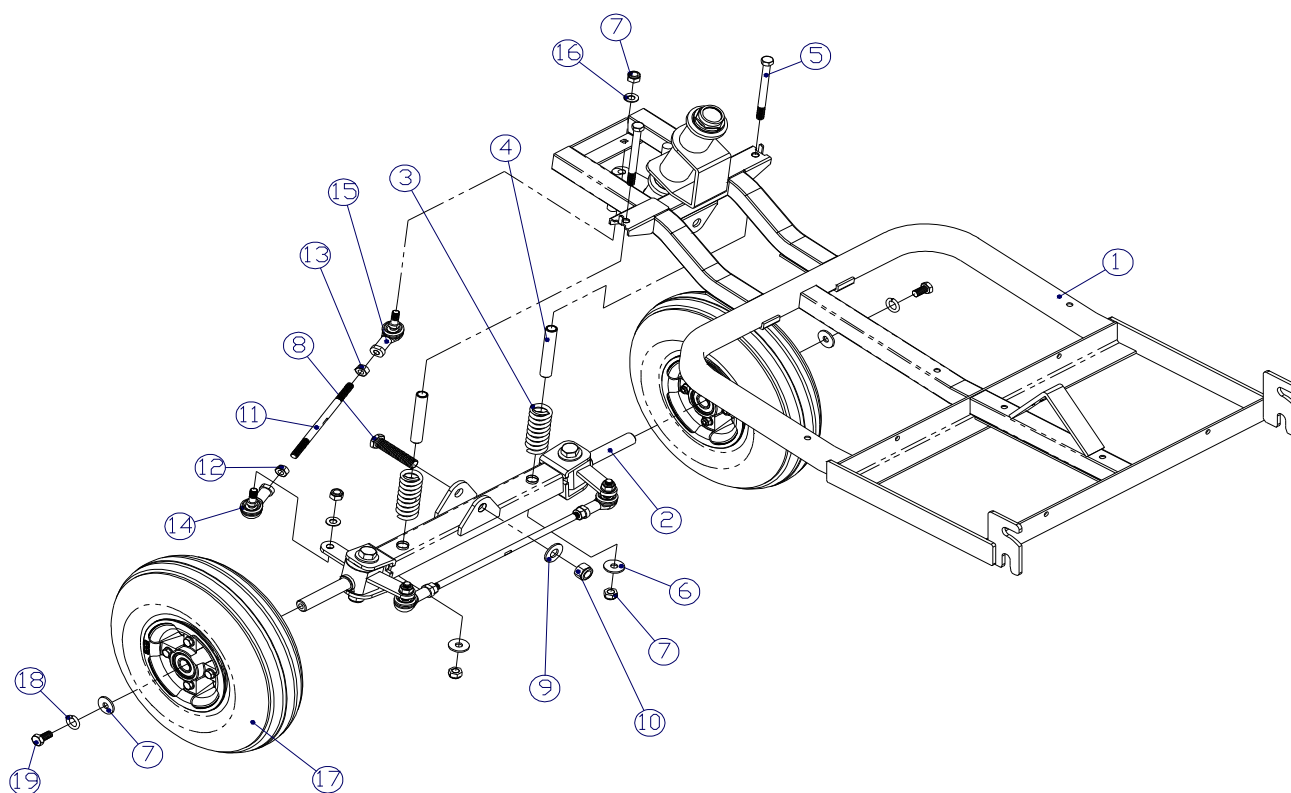


Pos	Article number	Units	Description
1	C12002	1	Front axle 4W
2	C12102	1	Knuckle spin left
3	C12101	1	Knuckle spin right
4	4B2006	4	Ball bearing 6001ZZ
5	00000.2005	4	Flat washer M12
6	00000.4121	2	Hex bolt M12x70
7	00000.2005	4	Flat washer M12
8	00000.1704	2	Lock nut M12
9	176.00241.000	1	Tie rod long assy
10	No spare part	1	Nut M8 left Screw
11	No spare part	1	Nut M8
12	No spare part	1	Universal joint
13	No spare part	1	Nut M8
14	00000.2003	2	Flat washer M8
15	00000.1702	2	Lock nut M8

**013: Front frame assy (4w)**

Pos	Article number	Units	Description	
1	110.00101.000	1	Front frame 4W	
2	015.07000.001	1	Head set bearing	
3	C13010	1	Steering axle	

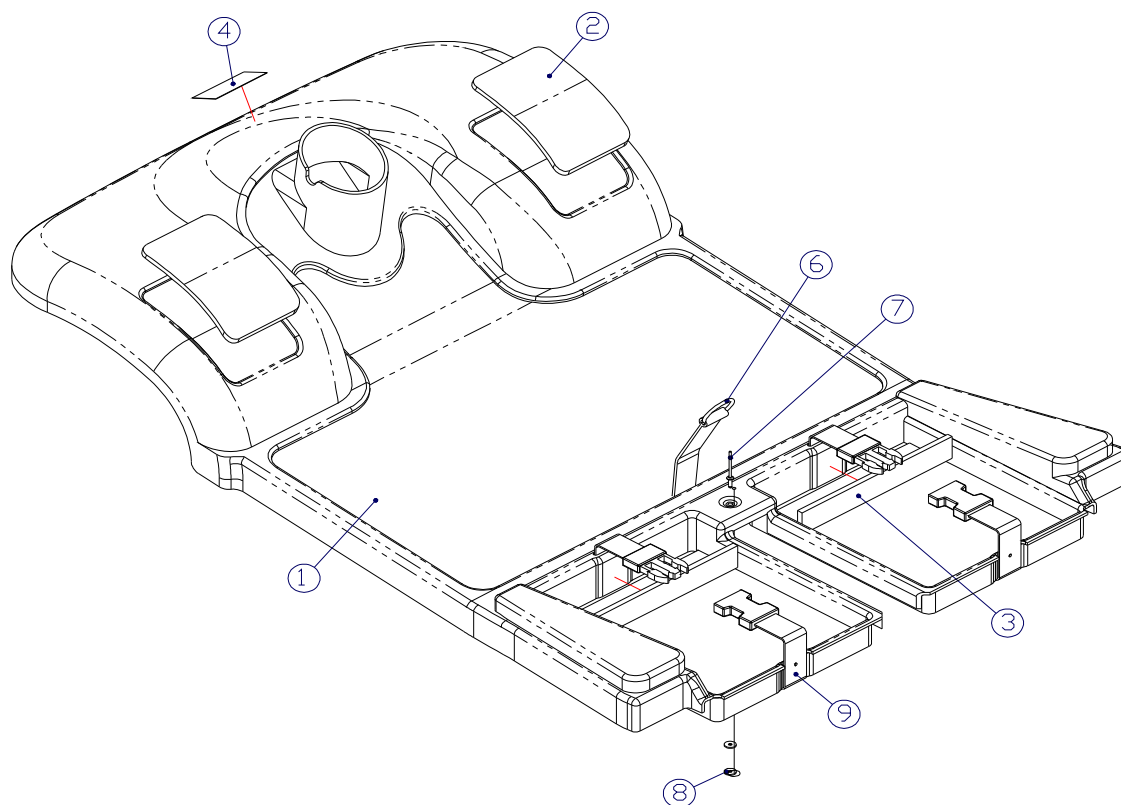
## 014: Front section assy (4w)



Pos	Article number	Units	Description
1	See: 013	1	Front frame assy 4W
2	176.00221.000	1	Front axle assy
3	4S2001	2	Suspension spring
4	123103	2	Guide pin
5	00000.4319	2	Hex bolt M8x90
6	00000.2003	4	Flat washer M8
7	00000.1702	4	Lock nut M8
8	No spare part	1	Hex bolt M12x55
9	00000.2005	1	Flat washer M12
10	00000.1704	1	Lock nut M12
11	176.00231.000	1	Tie rod short assy
12	No spare part	1	Nut M8 left screw
13	No spare part	1	Nut M8
14	No spare part	1	Universal joint left screw
15	No spare part	1	Universal joint
16	00000.2003	2	Flat washer M8
17	B24F02	2	Front tyre assy
18	00000.2203	2	Spring washer M8
19	00000.4312	2	Hex bolt M8x16

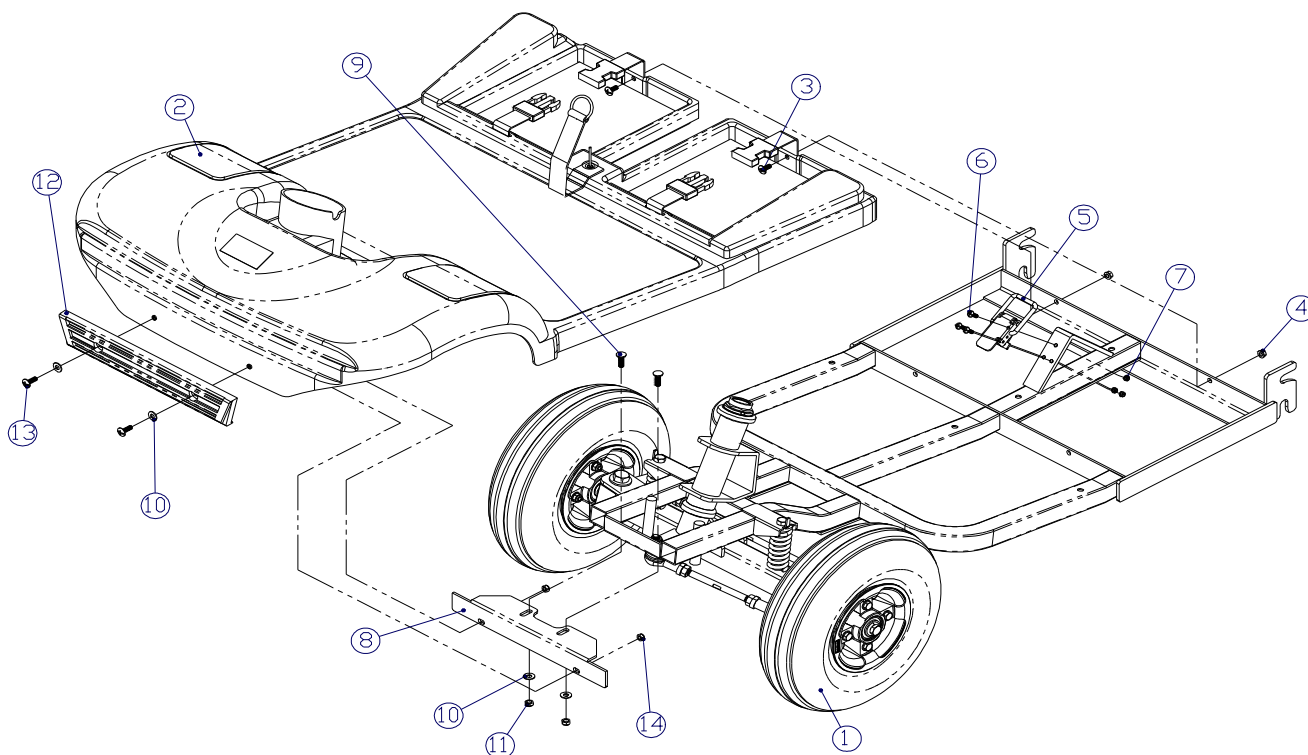


## 015: Front floorpan assy (4w)



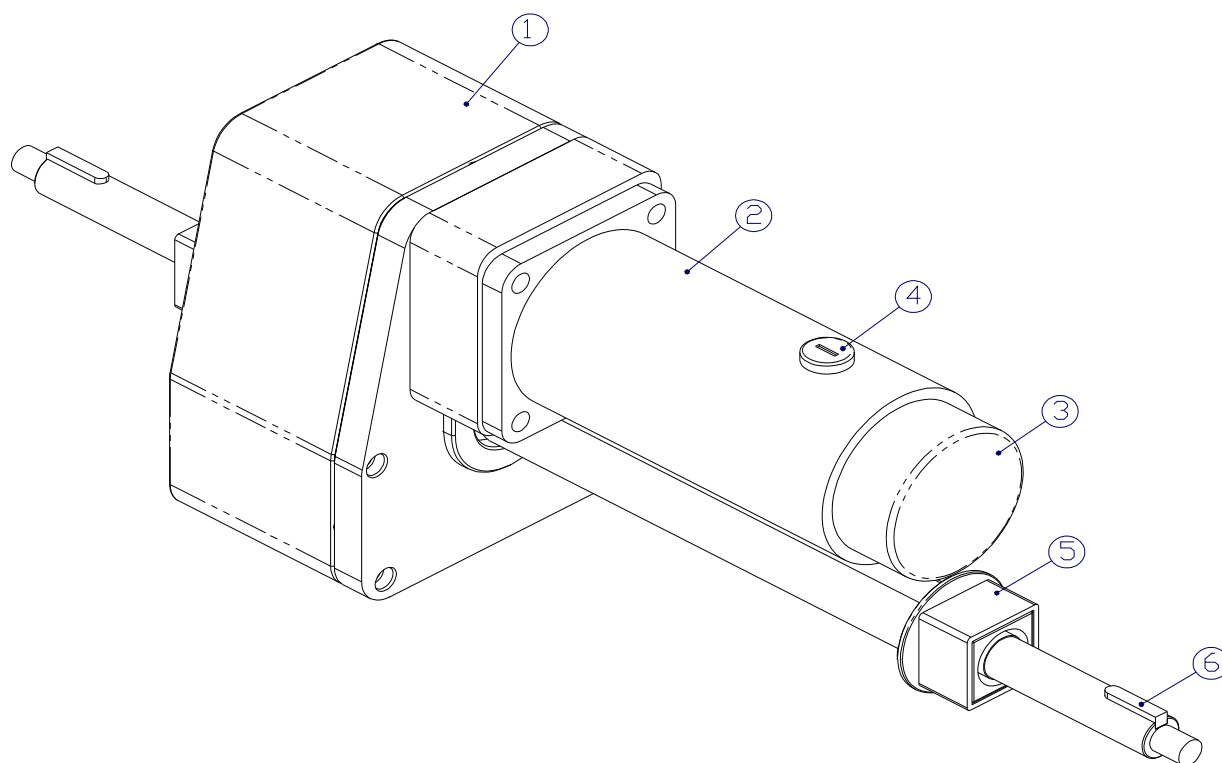
Pos	Article number	Units	Description
1	No spare part	1	Front cover
2	231002	2	Floor mat
3	126.00081.000	2	Battery bumper pad
4	008.00000.301	1	Label Calypso
5	-	-	-
6	1001276	1	Holding elastic band
7	No spare part	1	Rivet pop 4-4
8	00000.2009	2	Flat washer M3
9	243001	1	Battery strap
-	052.00541.000	1	Front floorpan assy green
-	052.00531.000	1	Front floorpan assy red
-	1003540	1	Front floorpan assy silver

## 016: 4w scooter assy



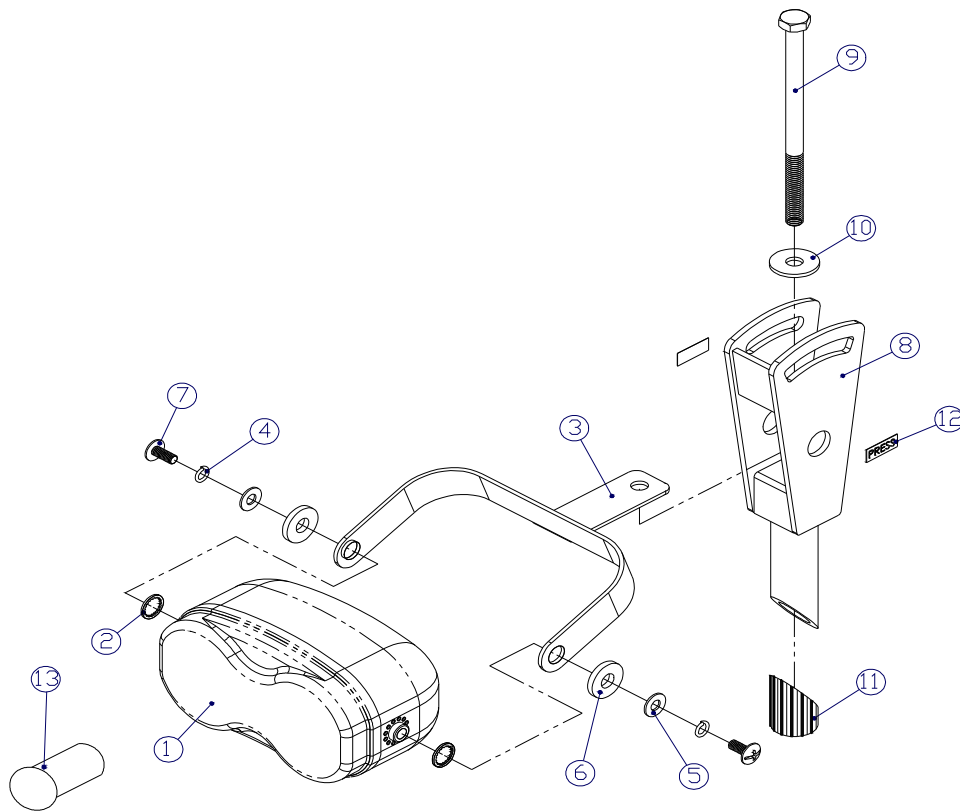
Pos	Article number	Units	Description
1	See: 014	1	Front section assy 4W
2	See: 015	1	Front floorpan assy 4W
3	00000.3200	2	Screw M5x12
4	00000.1700	2	Lock nut M5
5	001.20020.005	1	Latch
6	00000.3218	3	Screw M4x12
7	00000.1705	3	Lock nut M4
8	114301	1	Front bumper angle
9	00000.4309	2	Hex bolt M6x20
10	00000.2002	4	Flat washer M6
11	00000.1701	2	Lock nut M6
12	226003	1	PVC bumper
13	00000.3206	2	Screw M5x16
14	00000.1700	2	Lock nut M5

## 017: Transaxle assy



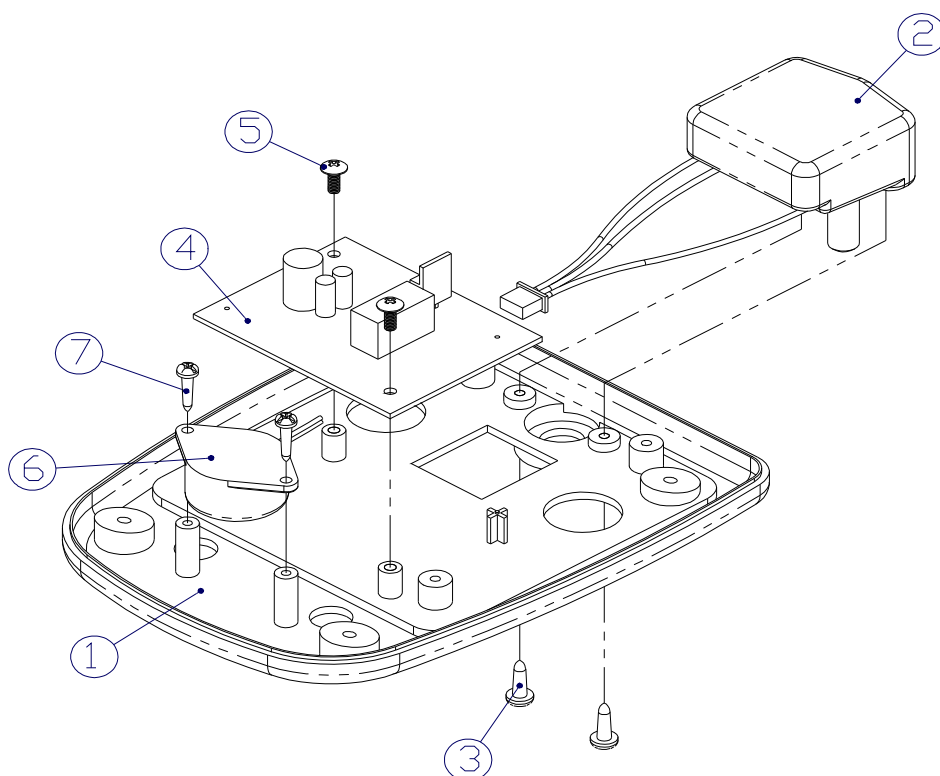
Pos	Article number	Units	Description	
1	100.00051.000	1	Transaxle	
2	101.00061.000	1	Motor 8K	
2	101.00071.000	1	Motor 10K	
3	108.00231.000	1	Brake	
4	103.00141.000	2	Motor brush	
5	104.00071.000	2	Mounting pad	
6	4K1002	2	Transaxle key	
-	100.00021.000	1	Transaxle assy 8K	
-	100.00011.000	1	Transaxle assy 10K	
-	100.00031.000	1	Transaxle assy 12K	
-	1003506	2	Motor brush cover 8/10K	
-	1003639	2	Motor brush cover 12K	

018: Head light support assy



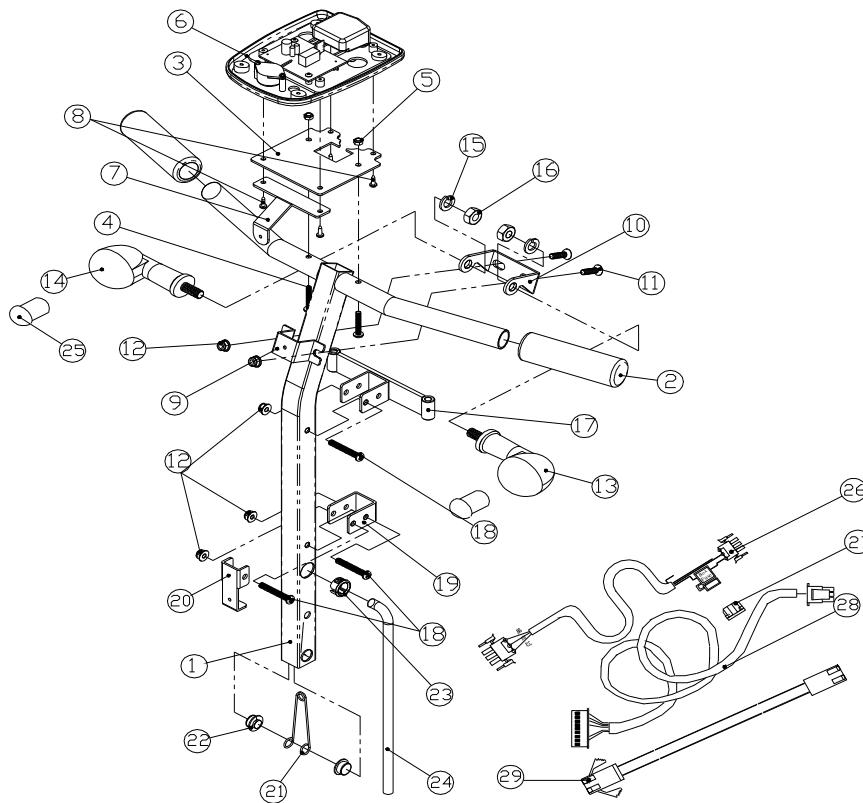
Pos	Article number	Units	Description
1	90000020	1	Head light assy
2	00000.2004	2	Washer M10
3	124.00091.000	1	Head light assy
4	00000.2201	2	Spring washer M5
5	00000.2001	2	Flat washer M5
6	No spare part	2	Plastic washer
7	00000.3200	2	Screw M5x12
8	C15003	1	Tilting connector
9	6B10801	1	Hex bolt M8x125
10	00000.2003	1	Flat washer M8
11	6N9508	1	Taper nut
12	No spare part	2	Label press
13	264.00121.000	1	Bulb 24V 3W

## 019: Console bottom cover assy



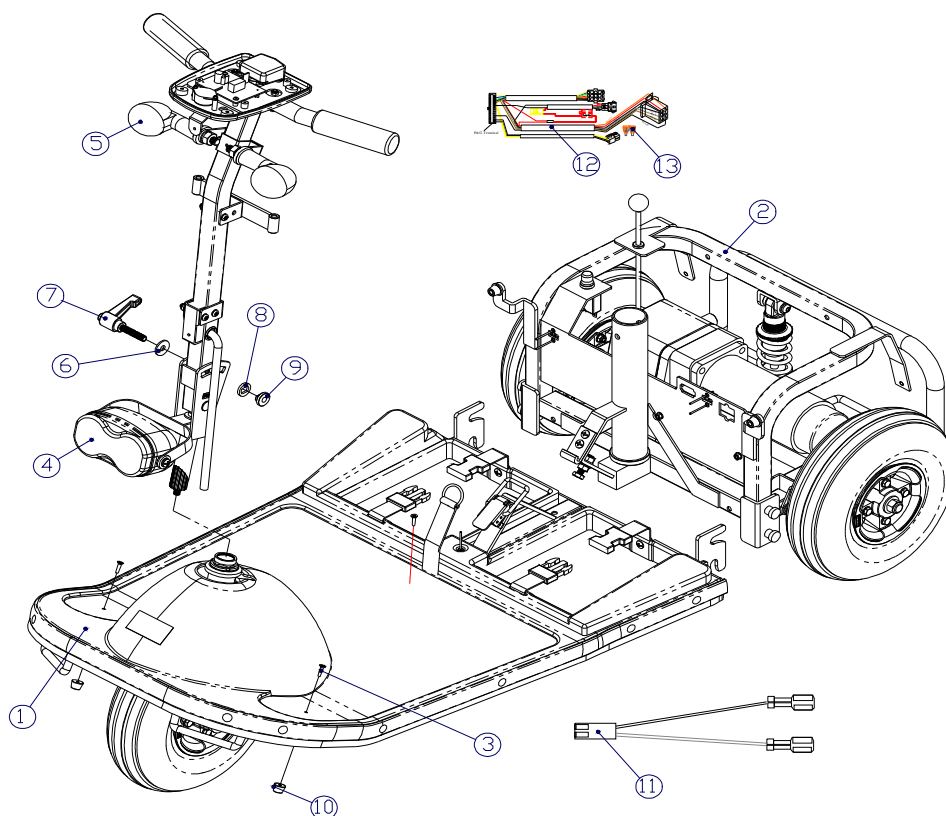
Pos	Article number	Units	Description	
1	305301	1	Console bottom cover red	
1	161.00071.000	1	Console bottom cover green	
1	1003102	1	Console bottom cover silver	
2	165.00071.000	1	Potentiometer assy	
3	00000.3218	2	Screw M4x12	
4	164.00072.000	1	PCB main board	
5	No spare part	2	Screw M3x16	
6	1001325	1	Horn	
7	No spare part	2	Screw M3x16	
-	161.00051.000	1	Console bottom cover assy red	
-	161.00061.000	1	Console bottom cover assy green	
-	1003101	1	Console bottom cover assy silver	

020: Tilting tiller assy



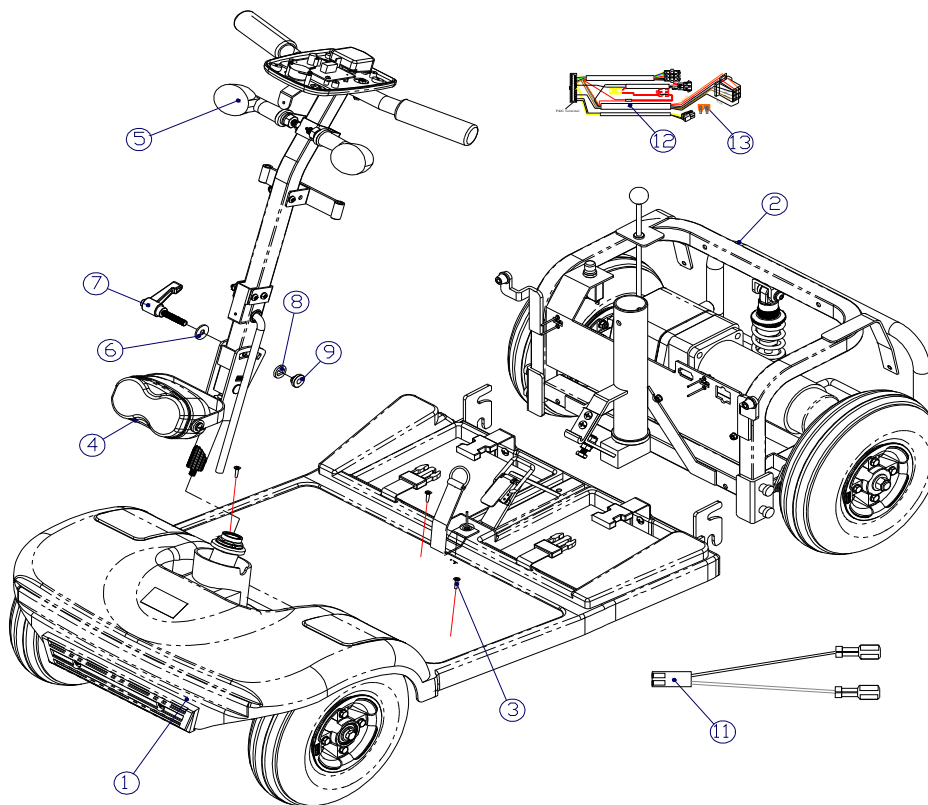
Pos	Article number	Units	Description
1	C14005	1	Tilting tiller
2	242001	2	Hand grip
3	110506	1	Console mounting plate
4	00000.3205	2	Screw M5x30
5	00000.1700	2	Lock nut M5
6	See: 020	1	Console bottom cover assy
7	110519	1	Handle cover bracket top
8	00000.3218	4	Screw M4x12
9	110421	1	Indicator front bracket
10	110631	1	Indicator back bracket
11	No spare part	2	Screw M6x20
12	00000.1701	5	Lock nut M6
13	330801	1	Front indicator assy left
14	330801	1	Front indicator assy right
15	00000.2204	2	Spring washer M10
16	00000.1703	2	Lock nut M10
17	C91101	1	Front basket bracket
18	00000.3701	3	Buttonhead M6x40
19	114516	1	Handle cover bracket
20	110505	1	Cover bracket
21	4S3002	1	Tilting wedge spring
22	131908	2	Push stopper
23	332001	1	Grommet
24	No spare part	1	Elastic net
25	264.00151.000	1	Bulb 24V 10W
26	055.00381.000	1	Charger extend cable
27	005.01210.000	1	Fuse 10A
28	055.00241.000	1	Maine wire
29	1003263	1	Head light extend cable

## 021: 3w scooter assy



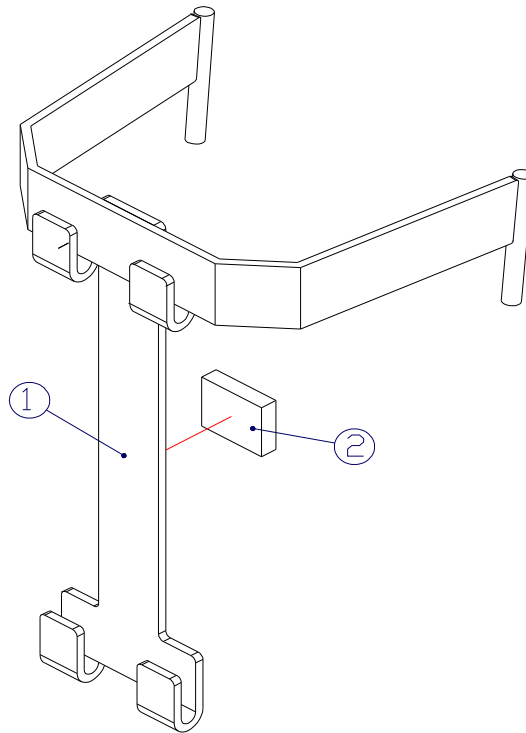
Pos	Article number	Units	Description
1	See: 011	1	3W scooter assy
2	See: 007	1	Rear section assy
3	00000.3219	3	Screw M4x16
4	See: 018	1	Head light support assy
5	See: 020	1	Tilting tiller assy
6	00000.2003	1	Flat washer M8 3D
7	143101	1	Tilt lever
8	221001	1	Slide washer
9	132001	1	Slide nut
10	No spare part	2	Rear shroud pad
11	No spare part	1	Console front light wire assy
12	055.00391.000	1	Controller wire assy
13	005.01180.000	1	Fuse 5A
-	055.00301.000	2	Battery harness

## 022: 4w scooter assy



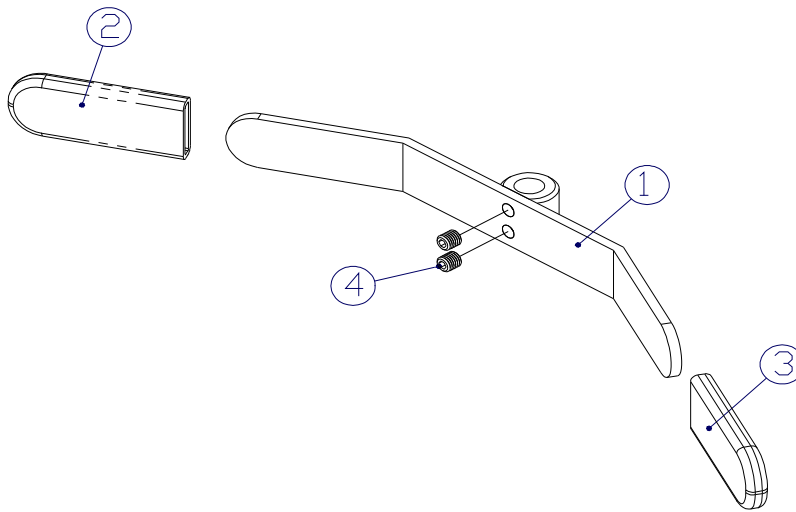
Pos	Article number	Units	Description
1	No spare part	1	4W scooter pro assy
2	See: 008	1	Rear section assy
3	00000.3219	3	Screw M4x16
4	See: 018	1	Head light support assy
5	See: 020	1	Tilting tiller assy
6	00000.2003	1	Flat washer M8
7	143101	1	Tilt lever
8	221001	1	Slide washer
9	132001	1	Slide nut
10	-	-	-
11	No spare part	1	Console front light wire assy
12	055.00391.000	1	Controller wire assy
13	005.01180.000	1	Fuse 5A



**023: Basket support assy**

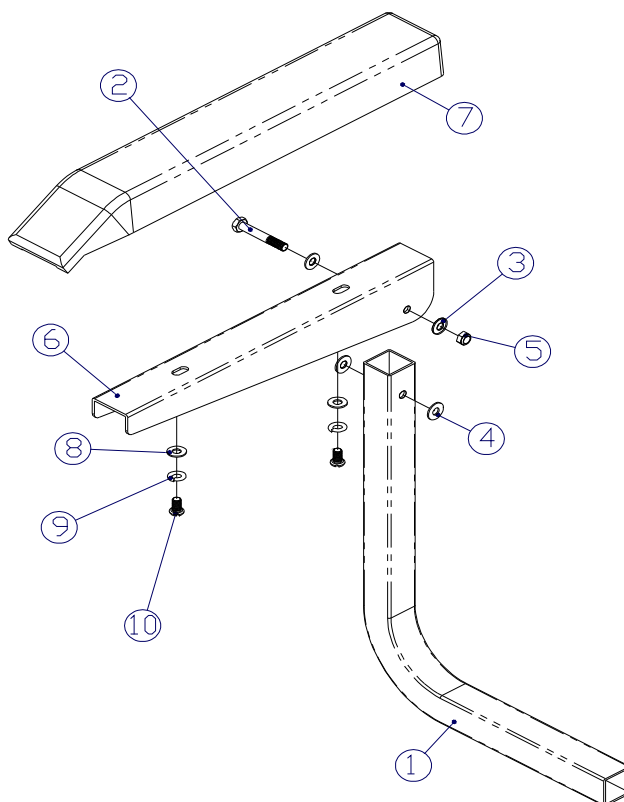
Pos	Article number	Units	Description	
1	C91102	1	Basket support	
2	242003	1	Basket bracket pad	

024: Wig-wag assy



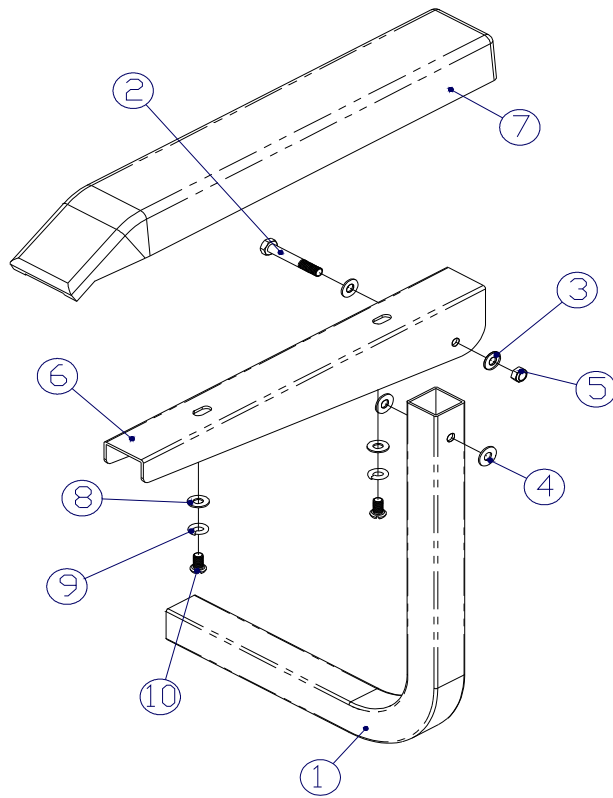
Pos	Article number	Units	Description	
1	C16001	1	Wig wag lever	
2	9003092	1	Wig wag cap yellow	
3	9003093	1	Wig wag cap green	
4	No spare part	2	Set screw M5x5	

## 025: Armrest assy RH



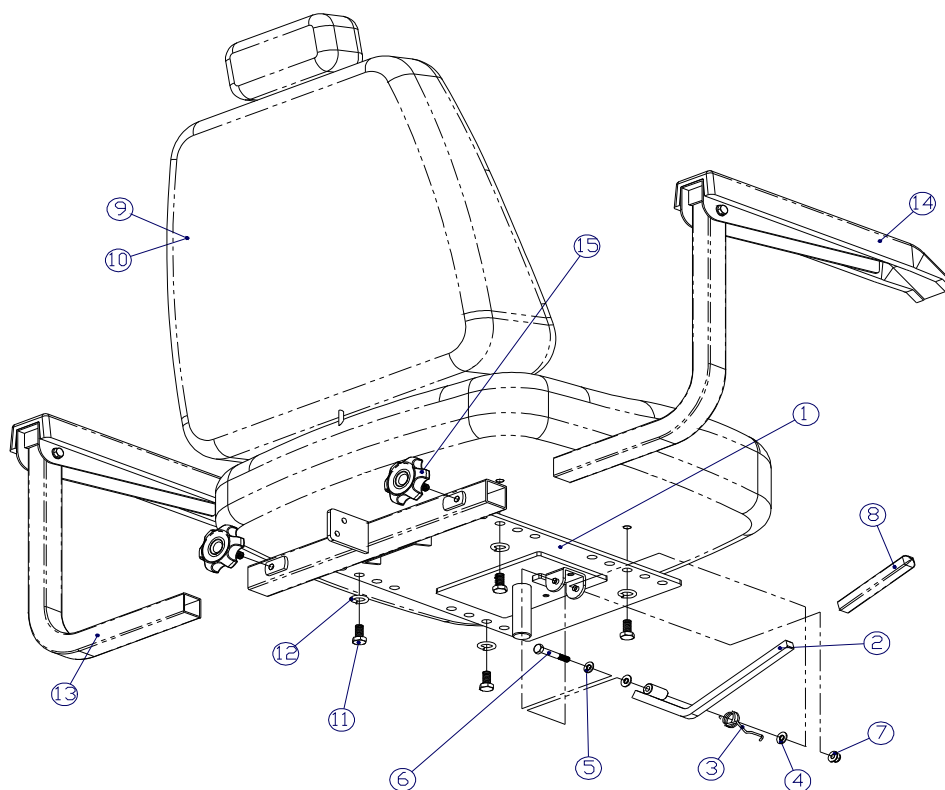
Pos	Article number	Units	Description
1	120139	1	Arm post
2	-	1	Hex bolt M6x40
3	00000.2002	2	Flat washer M6
4	No spare part	2	Plastic washer
5	00000.1701	1	Lock nut M6
6	C44003	1	Arm rest
7	232103	1	Arm rest pad
8	00000.2002	2	Flat washer M6
9	00000.2202	2	Spring washer M6
10	1001317	2	Screw M6x10

026: Armrest assy LH



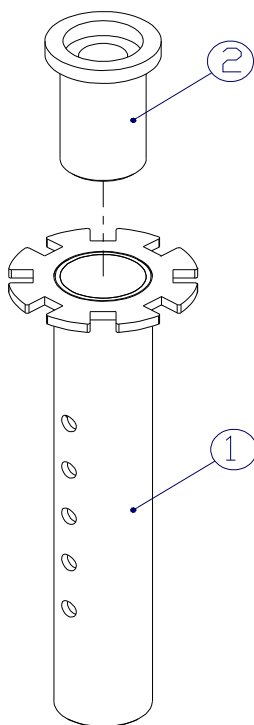
Pos	Article number	Units	Description
1	120139	1	Arm post
2	-	1	Hex bolt M6x40
3	00000.2002	2	Flat washer M6
4	No spare part	2	Plastic washer
5	00000.1701	1	Lock nut M6
6	C44003	1	Arm rest
7	232103	1	Arm rest pad
8	00000.2002	2	Flat washer M6
9	00000.2202	2	Spring washer M6
10	1001317	2	Screw M6x10

## 027: Seat assy



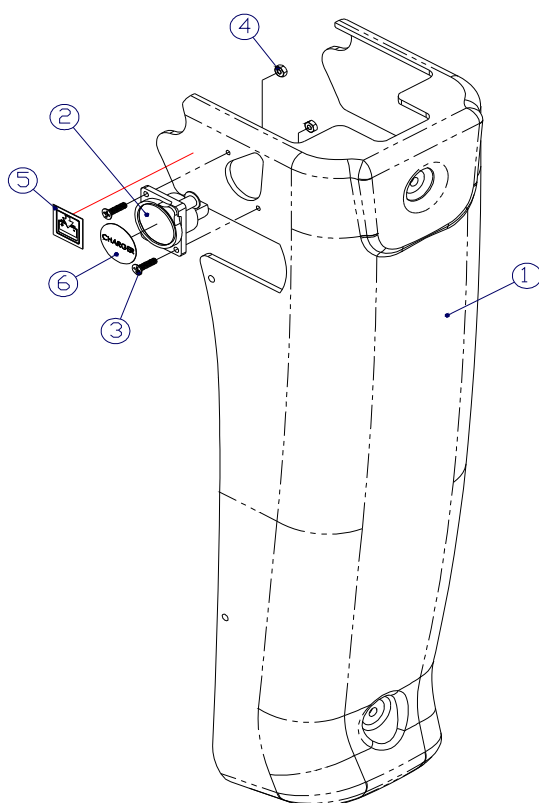
Pos	Article number	Units	Description
1	C41005	1	Seat frame
2	C43004	1	Seat lever
3	4S3001	1	Torsion spring
4	No spare part	2	Plastic washer
5	00000.2002	1	Flat washer M6
6	-	1	Hex bolt M6x40
7	00000.1701	1	Lock nut M6
8	234001	1	Lever pocket
9	10310	1	Seat
10	No spare part	1	Seat cloth
11	00000.4312	4	Screw M8x16
12	00000.2203	4	Spring washer M8
13	1008998	1	Armrest assy left
14	1008999	1	Armrest assy right
15	229001	2	Thumb screw
-	1009244	1	Captain seat

### 028: Seat post assy



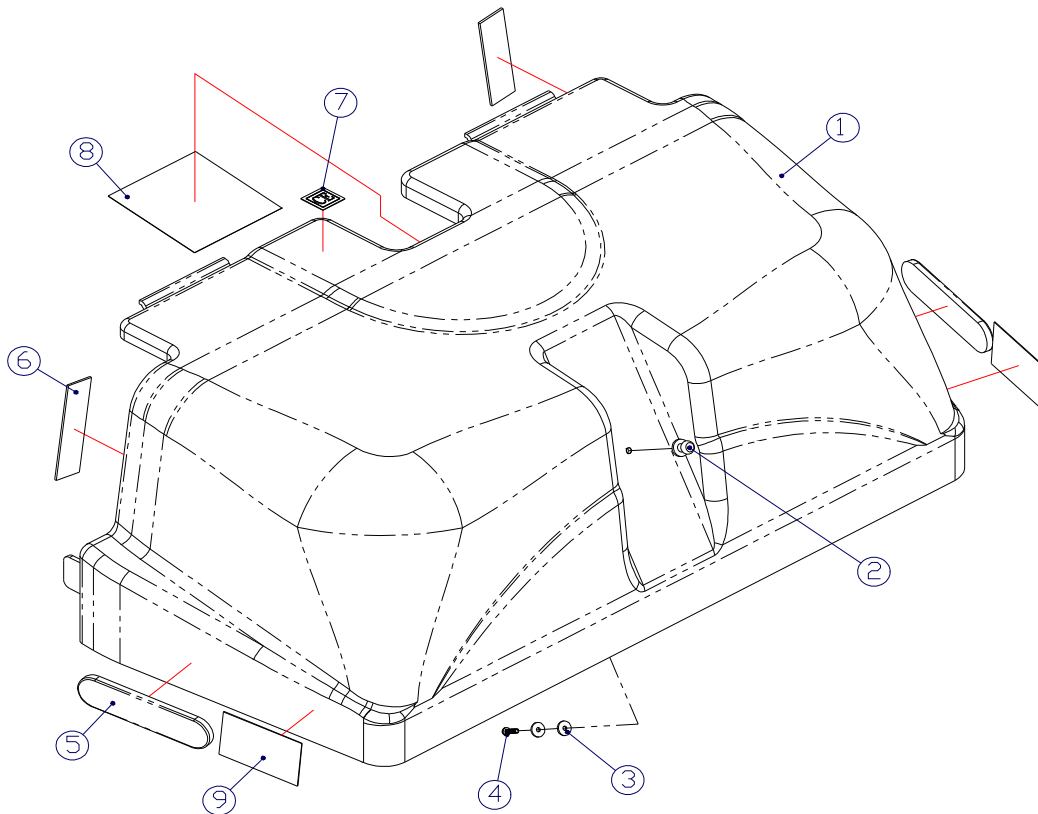
Pos	Article number	Units	Description	
1	C42003	1	Seat post	
2	221601	1	Seat post bush	

## 029: Front cover tiller assy



Pos	Article number	Units	Description
1	214001	1	Front cover tiller red
1	052.00551.000	1	Front cover tiller green
1	1003103	1	Front cover tiller silver
2	321301	1	Cannon jack
	055.00291.000	1	Charger harness
3	00000.3231	2	Screw M3x10
4	00000.1506	2	Nut M3
5	No spare part	1	Label battery
6	No spare part	1	Label charger

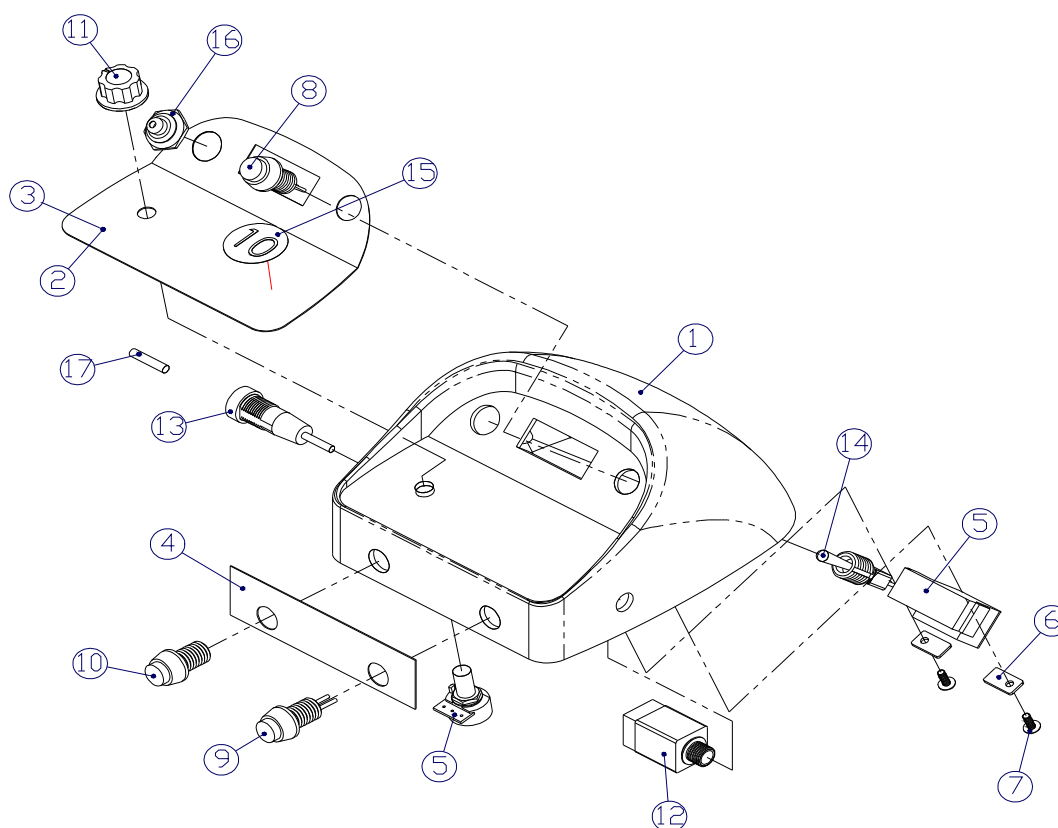
## 030: Battery cover assy



Pos	Article number	Units	Description	
1	B213101	1	Battery cover red	
1	B213102	1	Battery cover green	
1	1003109	1	Battery cover bleu	
2	1001284	1	Window post	
3	00000.2009	1	Flat washer M3	
4	00000.3231	1	Screw M3x10	
5	051.00031.000	2	Reflector	
6	No spare part	1	Velcro loop	
7	00001.1347	1	Label CE	
8	No spare part	1	Label circuit diagram	
9	No spare part	1	Sticker Handicare	
-	052.00561.000	1	Battery cover red	
-	052.00571.000	1	Battery cover green	
-	1003108	1	Battery cover bleu	

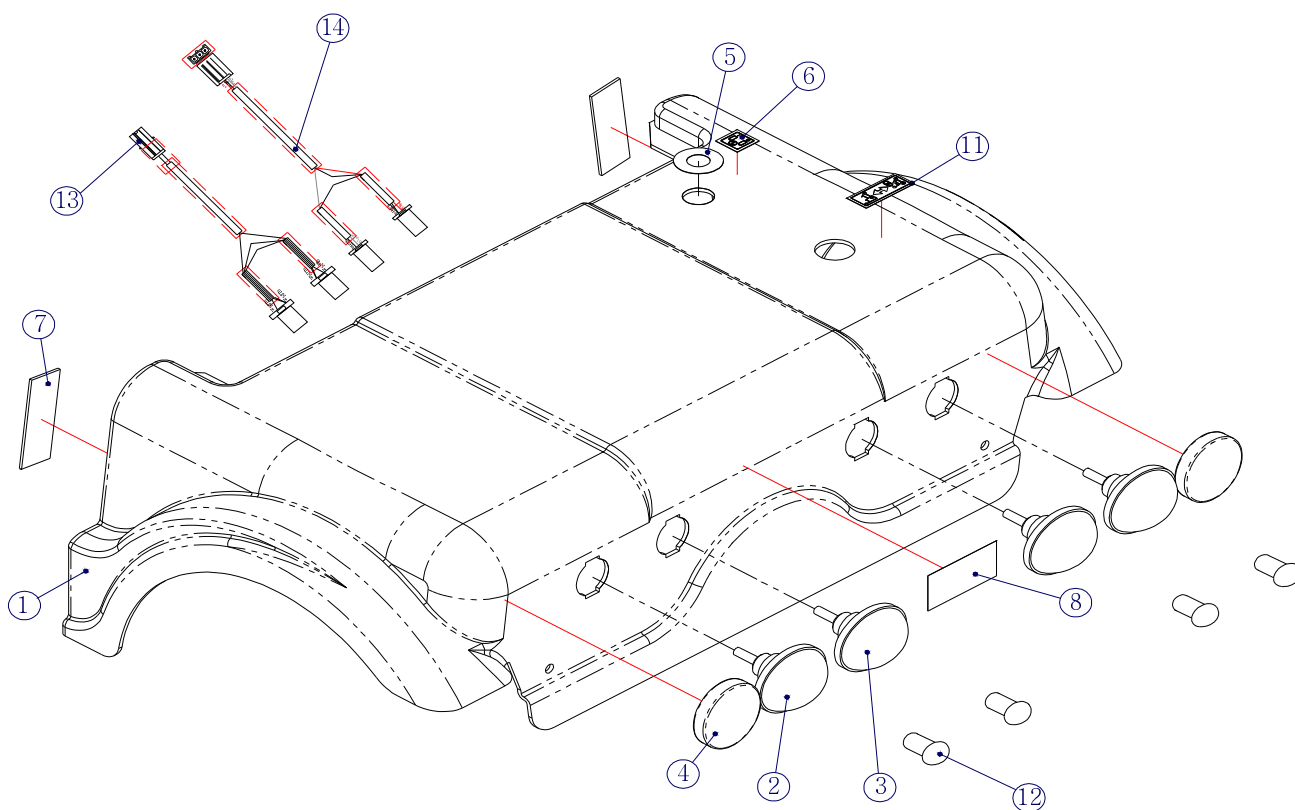


## 031: Console top cover assy



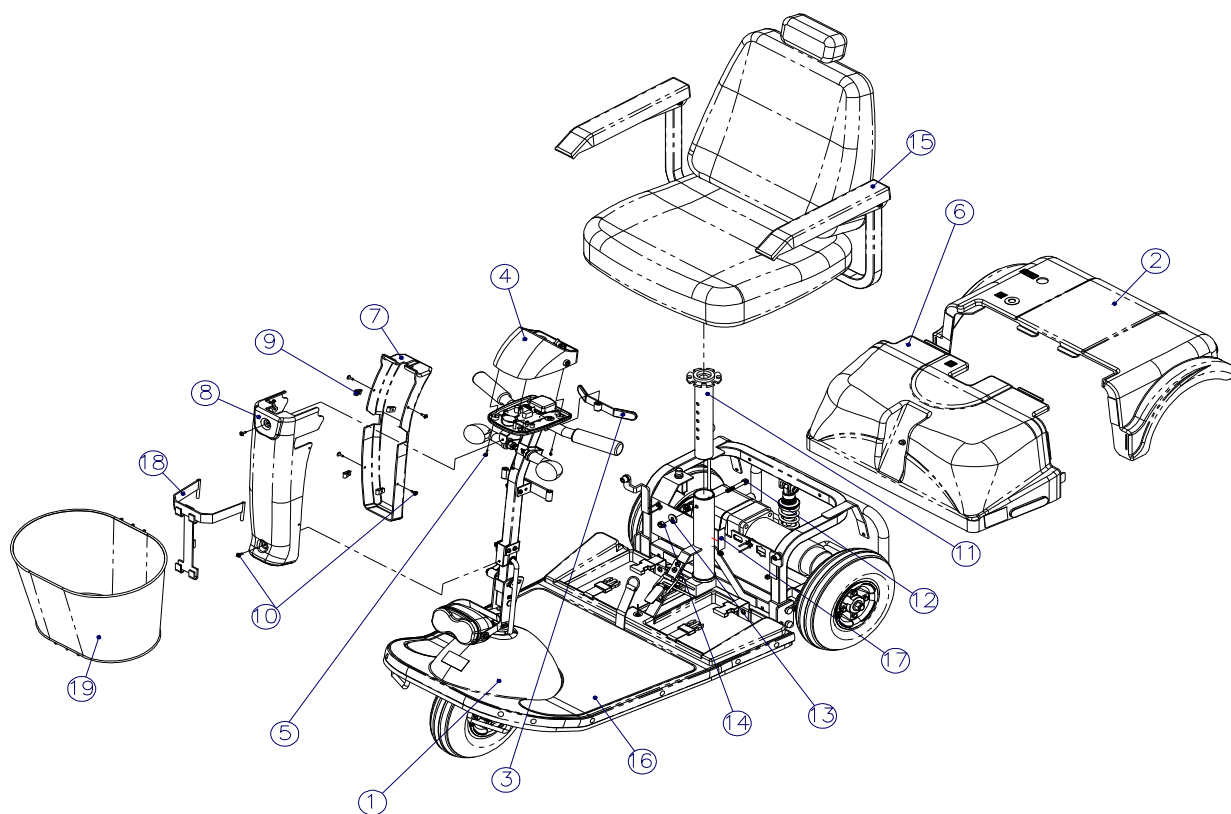
Pos	Article number	Units	Description
1	305201	1	Console top cover red
1	161.00081.000	1	Console top cover green
1	1003105	1	Console top cover silver
2	512003	1	Console upper decal
3	-	-	-
4	512102	1	Console side decal
5	1002498	1	Battery indicator + speed potentiometer with 8 pole connector
6	112101	2	Battery meter bracket
7	00000.3623	2	Screw M3x8
8	005.01200.000	1	Warning light control assy
9	322101	1	Head light switch assy
10	322001	1	Horn switch
11	165.00091.000	1	Speed control knob
12	322201	1	Key switch assy
13	330303	1	Console fuse
14	1001327	1	Toggle switch assy
15	1003397	1	Label 12K (Calypso HP)
16	No spare part	1	Toggle switch cover
17	1001331	1	Fuse 2A
-	161.00111.000	1	Console top cover assy red
-	161.00131.000	1	Console top cover assy green
-	1003104	1	Console top cover assy silver
-	165.00081.000	1	Speed control 50K
-	165.00101.000	1	Speed control 50K+knob
-	1001377	1	Contact key

## 032: Rear motor cover assy



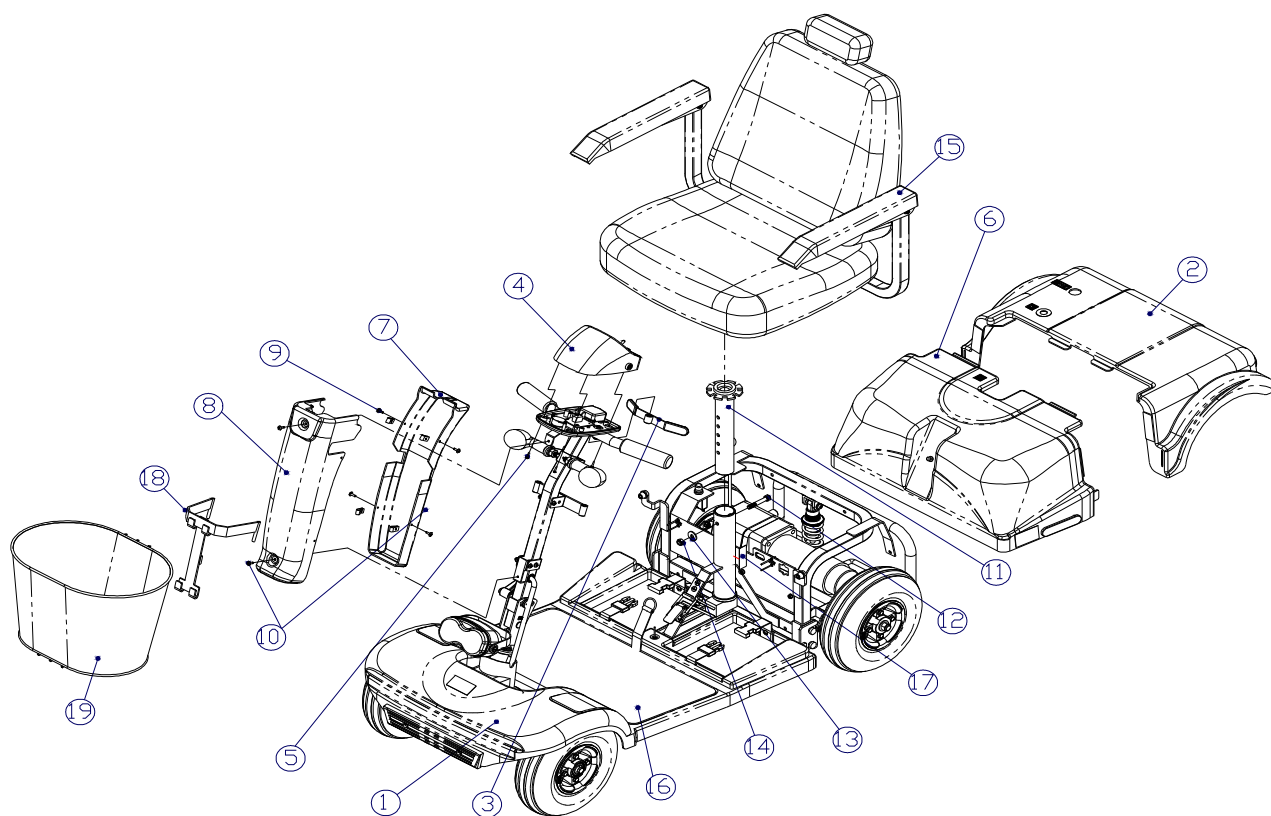
Pos	Article number	Units	Description	
1	213005	1	Rear motor cover red	
1	052.00581.000	1	Rear motor cover green	
1	1003107	1	Rear motor cover silver	
2	264.00101.000	2	Rear indicator	
3	1014195	2	Rear light	
4	051.00021.000	2	Reflector	
5	512201	1	Circuit breaker decal	
6	No spare part	1	Label circuit breaker	
7	No spare part	2	Velcro hook	
8	008.00000.301	1	Sticker Calypso	
9	-	-	-	
10	-	-	-	
11	No spare part	1	Label engage/release	
12	1001281	4	Rear light 24V 5W	
13	055.00251.000	1	Warning light cable assy	
14	055.00261.000	1	Rear indicator light cable assy	
-	B63004	1	Rear motor cover assy red	
-	052.00371.000	1	Rear motor cover assy green	

## 033: 3w scooter assy



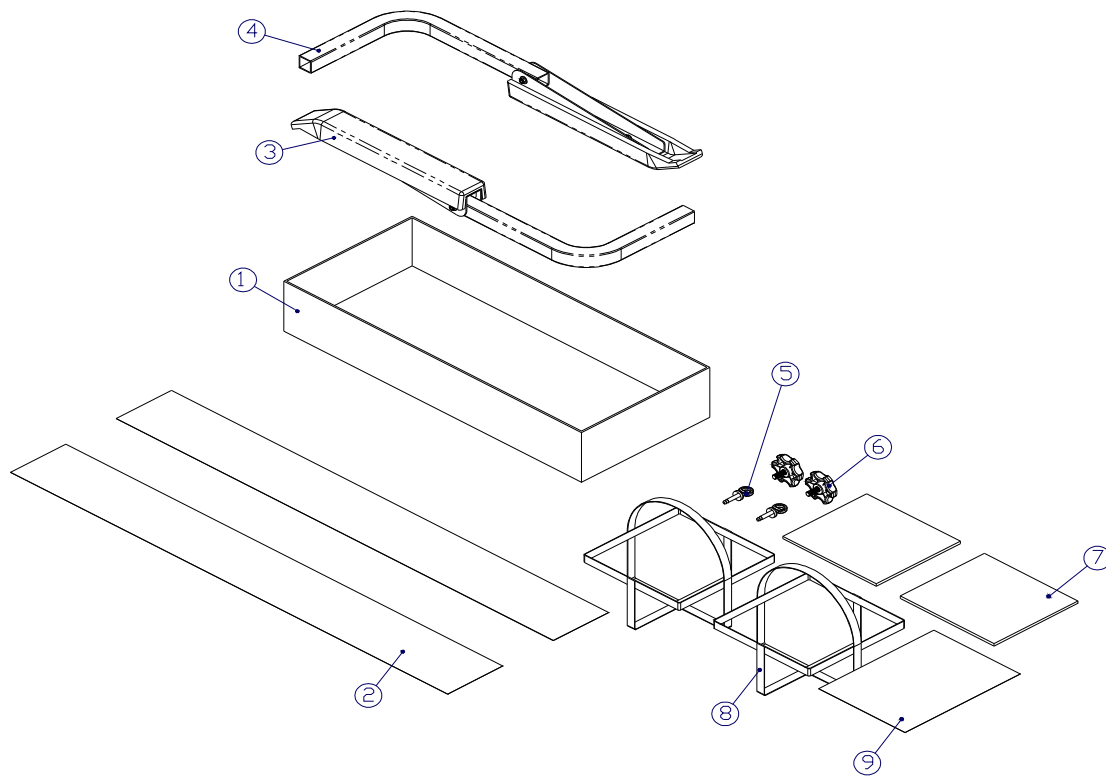
Pos	Article number	Units	Description
1	No spare part	1	3W scooter pro assy
2	See: 032	1	Rear motor cover assy
3	See: 024	1	Wig wag assy
4	See: 031	1	Console top cover assy
5	No spare part	4	Screw M3x16
6	See: 030	1	Front cover tiller assy
7	214101	1	Rear cover tiller
8	See: 029	1	Front cover tiller assy
9	No spare part	4	Plate nut M4
10	No spare part	6	Screw M4x12
11	See: 028	1	Seat post assy
12	No spare part	1	Hex bolt M8x50
13	00000.2003	1	Flat washer M8
14	00000.1702	1	Lock nut M8
15	See: 027	1	Seat assy
16	231007	1	Floor mat
17	No spare part	1	Label serial number
18	See: 023	1	Basket support assy
19	C91001	1	Front basket

## 034: 4w scooter assy



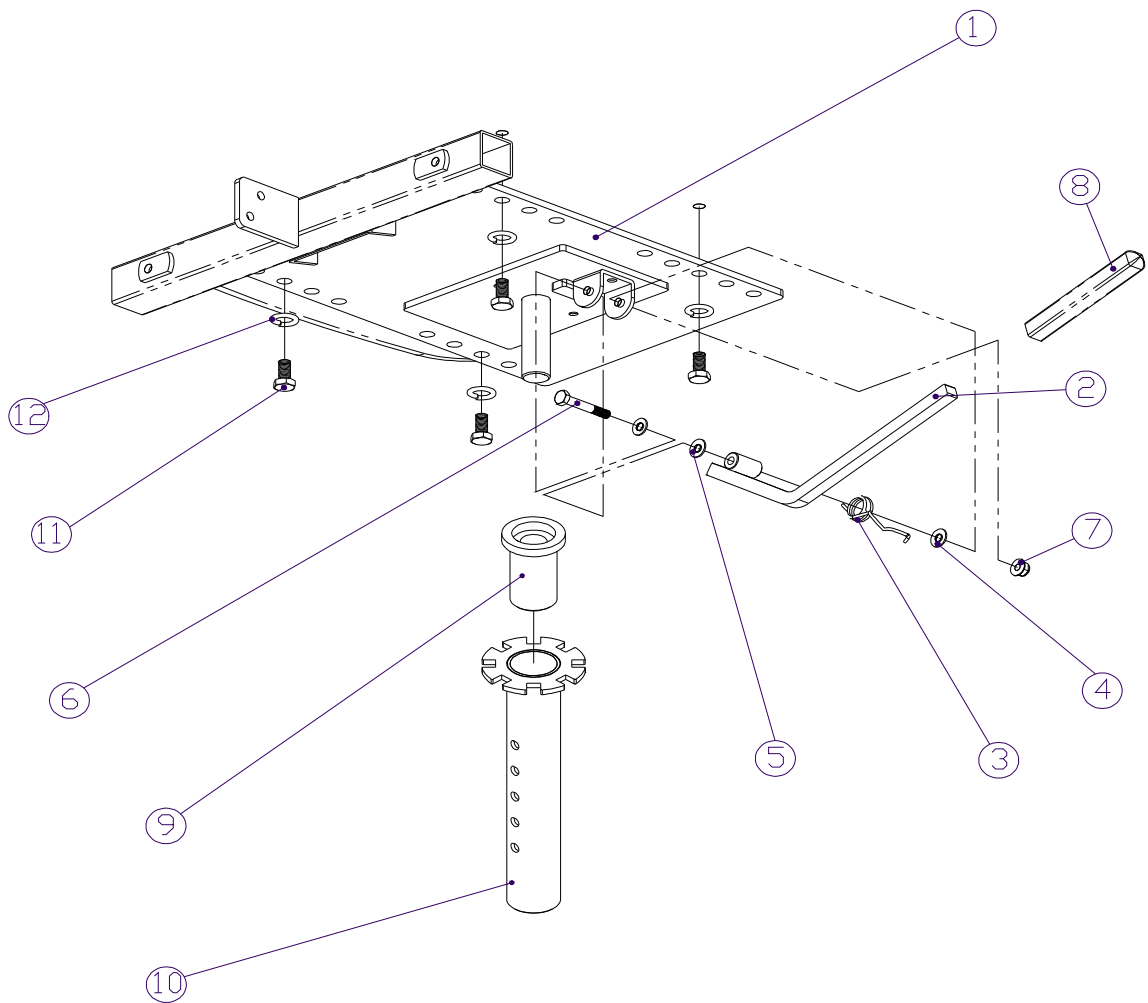
Pos	Article number	Units	Description	
1	No spare part	1	4W scooter pro assy	
2	See: 032	1	Rear motor cover assy	
3	See: 024	1	Wig wag assy	
4	See: 031	1	Console top cover assy	
5	No spare part	4	Screw M3x16	
6	See: 030	1	Battery cover assy	
7	214101	1	Rear cover tiller	
8	See: 029	1	Front cover tiller assy	
9	No spare part	4	Plate nut M4	
10	No spare part	6	Screw M4x12	
11	See: 028	1	Seat post assy	
12	No spare part	1	Screw M8x50	
13	00000.2003	1	Flat washer M8	
14	00000.1702	1	Lock nut M8	
15	See: 027	1	Seat assy	
16	231007	1	Floor mat	
17	No spare part	1	Label serial number	
18	See: 023	1	Basket support assy	
19	C91001	1	Front basket	

## 035: Parts pack



Pos	Article number	Units	Description	
1	No spare part	1	Part case	
2	No spare part	2	PE bag	
3	1008998	1	Arm rest assy left	
4	1008999	1	Arm rest assy right	
5	1001372	2	Key	
6	229001	2	Thumb screw	
7	242002	2	Battery pad	
8	138.00021.000	2	Battery straps	
9	No spare part	1	Plastic bag	

036: Seat frame assy



Pos	Article number	Units	Description
1	C41005	1	Seat frame
2	C43004	1	Seat lever
3	4S3001	1	Torsion spring
4	No spare part	2	Plastic washer
5	00000.2002	1	Flat washer M6
6	No spare part	1	Hex bolt M6x40
7	00000.1701	1	Nut M6
8	234001	1	Lever pocket
9	221601	1	Seat post bush
10	C42003	1	Seat post Captain seat
	9001495	1	Seat post Master seat
11	00000.4312	4	Hex bolt M8x16
12	00000.2203	4	Spring washer M8
-	9000034	1	Seat frame with slider
-	9001503	1	Master seat slide restrictor
-	120.00001.000	1	Seatframe assy

**01-01-2013**  
**Version 2013v1**

Page	Drawing	Position	Changes
20	002	1	Changed article number 233002 into 1008952
27	009	-	Changed article number 1003099 into 1003539
33	015	6	Changed article number 243002 into 1001276
37	019	6	Changed article number 322501 into 1001325
42	024	2+3	Changed article numbers 1001357 and 1001358 into 9003092 and 9003093
48	030	2	Changed article number 4Z2001 into 1001284
49	031	14	Changed article number 320503 into 1001327
50	032	-	Deleted article number 1003106

**01-01-2014**  
**Version 2014v1**

Page	Drawing	Position	Changes
-	-	-	-

**01-01-2015**  
**Version 2015v1**

Page	Drawing	Position	Changes
8			Updated warranty text
25	7	5 12	Deleted article number 'Hex bolt M6x40' Deleted article number 1003398 'Controller Solo 60A'
	9	3	Deleted article number 232003 'Mold bumper'
43	25	2	Deleted article number 'Hex bolt M6x40'
44	26	2	Deleted article number 'Hex bolt M6x40'
45	27	6 13 / 14	Deleted article number 'Hex bolt M6x40' Changed article number armrest assy left/right 120.00011.000 and 120.00021.000 into 1008998 and 1008999 Added article number 1009244
49	31	-	Changed description article number 1002498 Deleted article number 321201 Battery indicator, no longer available Added article number 1001377
53	35	3 / 4	Changed article number armrest assy left/right 120.00011.000 and 120.00021.000 into 1008998 and 1008999



Handicare B.V.  
Vossenbeemd 104  
5705 CL Helmond  
The Netherlands

T +31 (0)492 593 888  
F +31 (0)492 537 931  
[www.handicare.com](http://www.handicare.com)