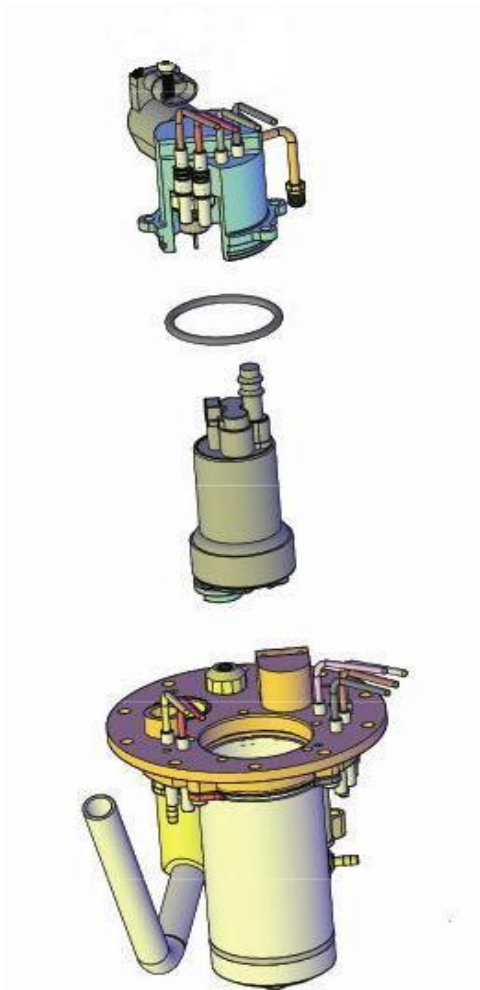




F14 MULTIVALVE FUEL PUMP SERVICE MANUAL



P11X4-9202-AA

Revision: A - Dated 10/18/11

Replaces: None

F14 MULTIVALVE FUEL PUMP SERVICE MANUAL

HARDWARE CONTENTS

P13X4-4105-AA - PROPANE OPTIMIZATION KIT - EMERGENCY VEHICLES	
COMPONENT	QTY
A - ROCKER SWITCH	1
B - 16 GA. GREEN/BLACK WIRE W/SPADE CONNECTOR	2
C - 1/4" CORRUGATE	1
D - CUT-OUT TEMPLATE FOR PADDLE SWITCH	1
E - ROCKER SWITCH BRACKET	1
F - BRACKET SCREWS	2

TOOLS REQUIRED

3mm ALLEN WRENCH
 4mm ALLEN WRENCH
 4mm ALLEN WRENCH SOCKET
 8mm OPEN END WRENCH
 13mm OPEN END WRENCH
 TORQUE WRENCH (5 Nm CAPABILITY)
 PHILLIPS HEAD SCREWDRIVER
 ADJUSTABLE WRENCH OR CHANNEL LOCKS
 10w30 MOTOR OIL (O-RING LUBRICANT)
 LEAK DETECTION SOLUTION (SOAP & WATER)



SAFETY WARNING

READ BEFORE STARTING SERVICING OF THE ICOM JTG SYSTEM.

ENSURE THAT ALL PERSONNEL IN THE IMMEDIATE AREA ARE AWARE OF THESE REMINDERS.



PROPANE IS A NONTOXIC, NONPOISONOUS GAS THAT IS EXTREMELY FLAMMABLE. IF SOMETHING IGNITES IT, YOU COULD BE BADLY BURNED. KEEP SPARKS, OPEN FLAMES AND SMOKING MATERIAL AWAY FROM PROPANE.

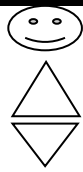


LIQUID PROPANE IS EXTREMELY COLD (-40° F) AND CAUSE SERIOUS BURNS WHEN CONTACTING YOUR SKIN OR EYES. PREVENT CONTACT WHEN HANDLING LPG BY WEARING APPROVED PROTECTIVE GLOVES AND EYE PROTECTION.



PROPANE IS STORED UNDER PRESSURE. THE FUEL SYSTEM OPERATES AT PRESSURES OF UP TO 312 PSI. A SUDDEN RELEASE OF PROPANE CAN CAUSE SERIOUS INJURIES.

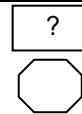
THESE INSTRUCTIONS ARE INTENDED FOR TECHNICIANS WHO ARE CERTIFIED BY ALL AGENCIES THAT GOVERN PROPANE INSTALLATIONS AND THE TRANSPORTATION OF PROPANE. THE NATIONAL FIRE PROTECTION ASSOCIATION (NFPA) PUBLISHES A CODE BOOK OF RULES (NFPA 58) THAT APPLY TO THE STORAGE, HANDLING, TRANSPORTATION AND USE OF LIQUEFIED PETROLEUM GAS (LPG). LOCAL PROPANE SUPPLIERS SUCH AS FERRELGAS AND AMERIGAS, AS WELL AS SOME AGENCIES SUCH AS THE TEXAS RAILROAD COMMISSION AND PERC (PROPANE EDUCATION & RESEARCH COUNCIL) OFFER INFORMATIVE COURSES TO HELP PREVENT SEVERE INJURY OR DEATH TO YOU OR SOMEONE ELSE IF YOU DON'T FULLY UNDERSTAND LPG AND ITS PROPERTIES.



INSPECTION

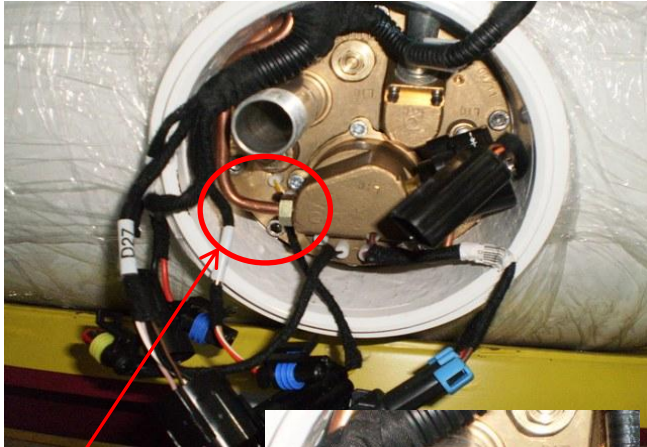
TORQUE

CRITICAL PROCESS



ITEM NUMBER

OPERATION

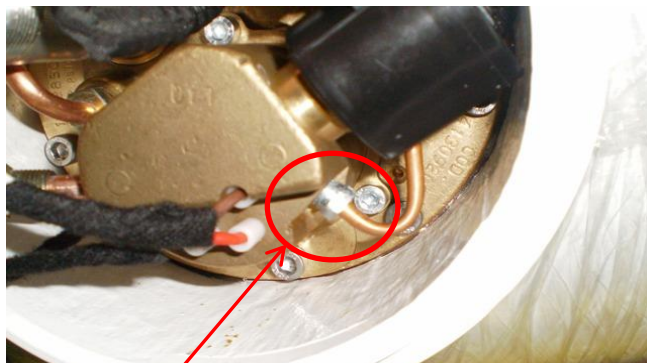


80) LOCATE FUEL SUPPLY LINE ATTACHED TO THE FUEL PUMP HOUSING; USING A 13mm WRENCH, CAREFULLY LOOSEN THE FITTING AND REMOVE THE LINE FROM THE HOUSING

80

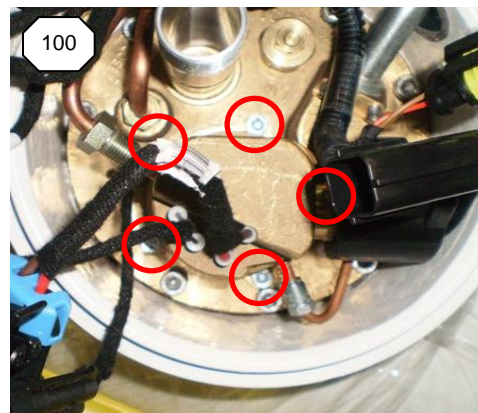
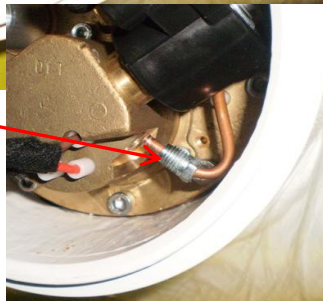


90) LOCATE FUEL PUMP RETURN LINE ATTACHED TO THE FUEL PUMP HOUSING; USING AN 8mm WRENCH, CAREFULLY LOOSEN THE FITTING AND REMOVE THE LINE FROM THE HOUSING



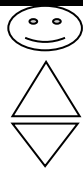
100) LOCATE (5) SOCKET HEAD SCREWS THAT SECURE THE FUEL PUMP HOUSING TO THE MULTIVALVE; USING A 4mm ALLEN WRENCH, REMOVE THE (5) SCREWS AND SET ASIDE

90

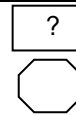


100

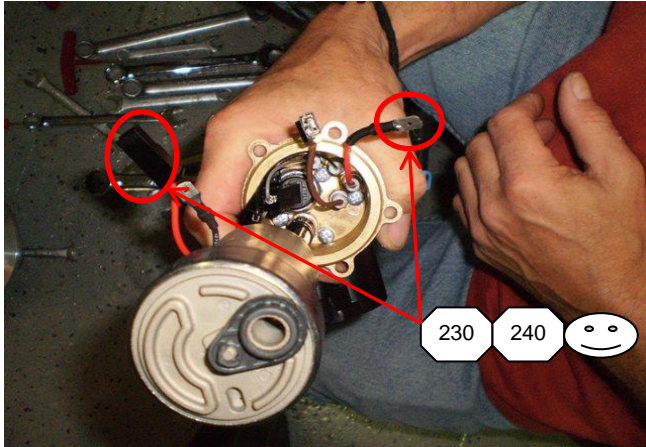
ITEM	PART NUMBER	QTY	DESCRIPTION	TORQUE	TOOLS
					4mm ALLEN WRENCH
					8mm OPEN END WRENCH
					13mm OPEN END WRENCH
					PROCESS NAME
					MULTIVALVE FUEL PUMP REPLACEMENT INSTRUCTIONS
					REV
					A
					PROCESS NUMBER
					P11X4-9202-AA
					PAGE
					3 OF 13



INSPECTION
TORQUE
CRITICAL PROCESS

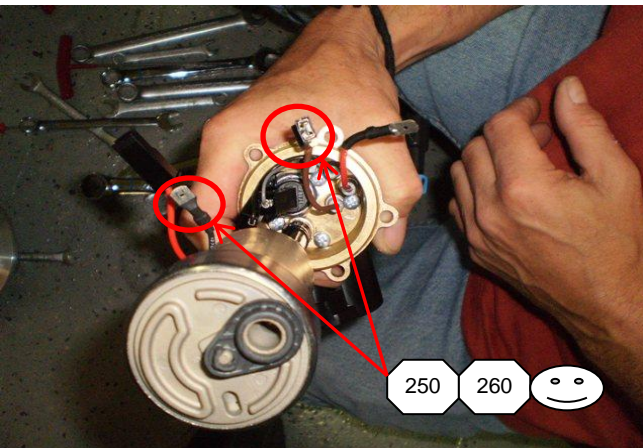


ITEM NUMBER
OPERATION



230) LOCATE AND GRASP RED WIRE WITH SPADE CONNECTOR ATTACHED TO THE FUEL PUMP HOUSING: LOCATE AND GRASP RED WIRE WITH BLACK FEMALE CONNECTOR ATTACHED TO FUEL PUMP

240) ALIGN AND SEAT SPADE CONNECTOR INTO FEMALE CONNECTOR (**SLIGHTLY PUSH/PULL CONNECTORS TO VERIFY CONNECTORS ARE FULLY SEATED**)



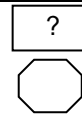
250) LOCATE AND GRASP BROWN WIRE WITH FEMALE CONNECTOR ATTACHED TO THE FUEL PUMP HOUSING; LOCATE AND GRASP BLACK WIRE WITH SPADE CONNECTOR ATTACHED TO THE FUEL PUMP

260) ALIGN AND SEAT SPADE CONNECTOR INTO FEMALE CONNECTOR (**SLIGHTLY PUSH/PULL CONNECTORS TO VERIFY CONNECTORS ARE FULLY SEATED**)

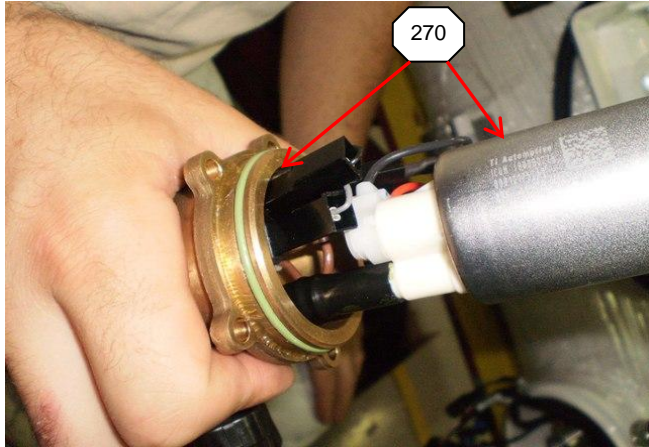
ITEM	PART NUMBER	QTY	DESCRIPTION	TORQUE	TOOLS
PROCESS NAME				REV	
MULTIVALVE FUEL PUMP REPLACEMENT INSTRUCTIONS				A	
PROCESS NUMBER				PAGE	
P11X4-9202-AA				7 OF 13	



INSPECTION
TORQUE
CRITICAL PROCESS



ITEM NUMBER
OPERATION



270) POSITON FUEL PUMP TO LINE UP BELOW THE FUEL PUMP HOUSING AS SHOWN

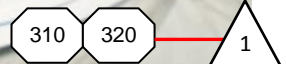
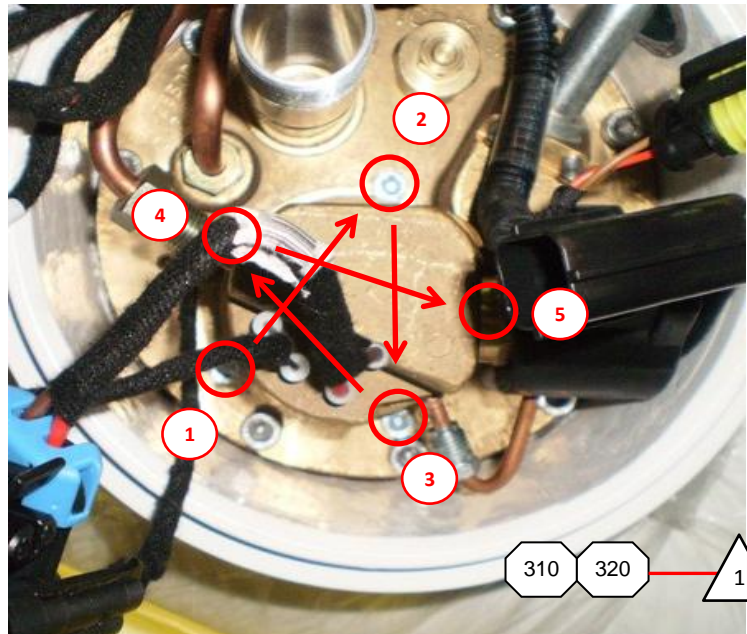
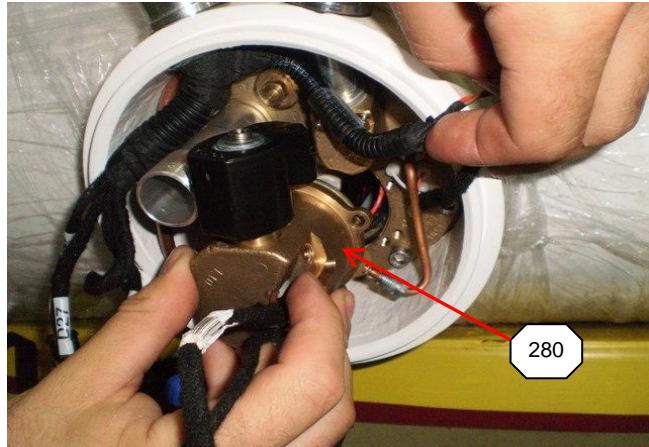
280) CAREFULLY INSERT FUEL PUMP INTO MULTIVALVE AS SHOWN

290) ALIGN AND SEAT FUEL PUMP HOUSING INTO MULTIVALVE; POSITION MOUNTING HOLES IN THE FUEL PUMP HOUSING TO THE MOUNTING HOLES IN THE MULTIVALVE

300) OBTAIN (5) SOCKET HEAD SCREWS REMOVED IN STEP 100

310) USING A 4mm ALLEN WRENCH, INSTALL AND HANDSTART HANDSTART (5) SCREWS INTO MULTIVALVE

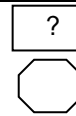
320) TORQUE SCREWS DIAMETRICALLY TO 5.5 Nm +/- .50



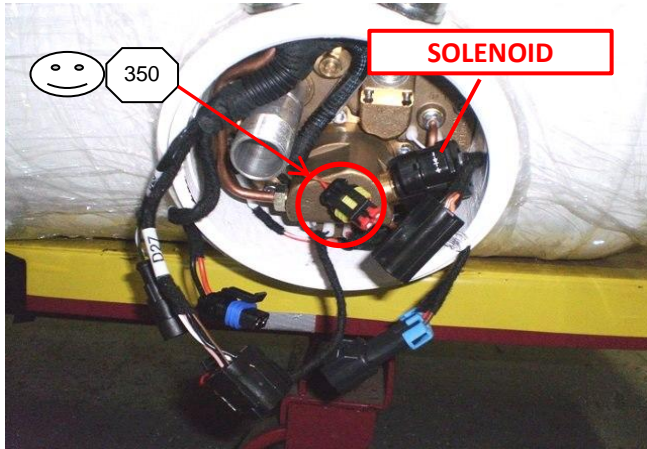
ITEM	PART NUMBER	QTY	DESCRIPTION	TORQUE		TOOLS
				1	5.5Nm +/- .50	4mm ALLEN SOCKET TORQUE WRENCH
PROCESS NAME						REV A
MULTIVALVE FUEL PUMP REPLACEMENT INSTRUCTIONS						
PROCESS NUMBER						PAGE 8 OF 13
P11X4-9202-AA						



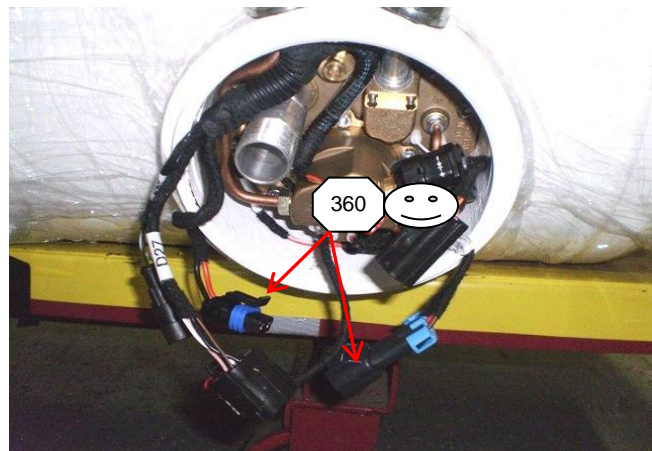
INSPECTION
TORQUE
CRITICAL PROCESS



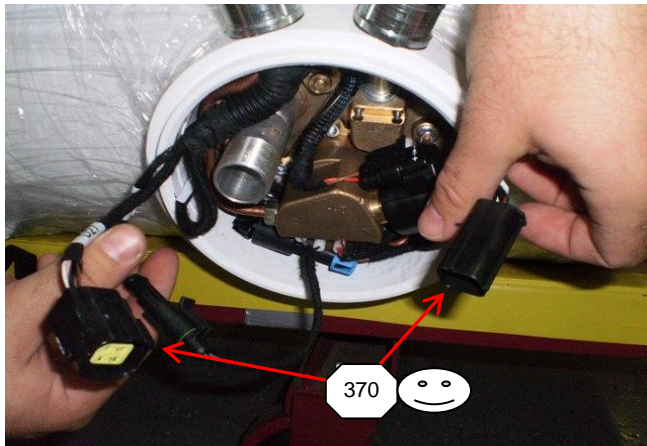
ITEM NUMBER
OPERATION



350) LOCATE AND GRASP THE ELECTROVALVE SUPPLY SOLENOID WIRE HARNESS LEAD (RED & BROWN WIRES); ALIGN AND SEAT THE CONNECTOR INTO THE SOLENOID
(SLIGHTLY PUSH/PULL CONNECTOR TO VERIFY FULLY SEATED INTO SOLENOID)

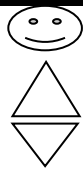


360) LOCATE AND GRASP THE LPG FUEL PUMP WIRE HARNESS LEADS (RED & BLACK WIRES); ALIGN AND SEAT CONNECTORS TOGETHER **(SLIGHTLY PUSH/PULL CONNECTORS TO VERIFY CONNECTORS ARE FULLY SEATED)**

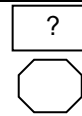


370) LOCATE AND GRASP THE FUEL SUPPLY / COMMUTATOR WIRE HARNESS LEADS; ALIGN AND SEAT CONNECTORS TOGETHER **(SLIGHTLY PUSH/PULL CONNECTORS TO VERIFY CONNECTORS ARE FULLY SEATED)**

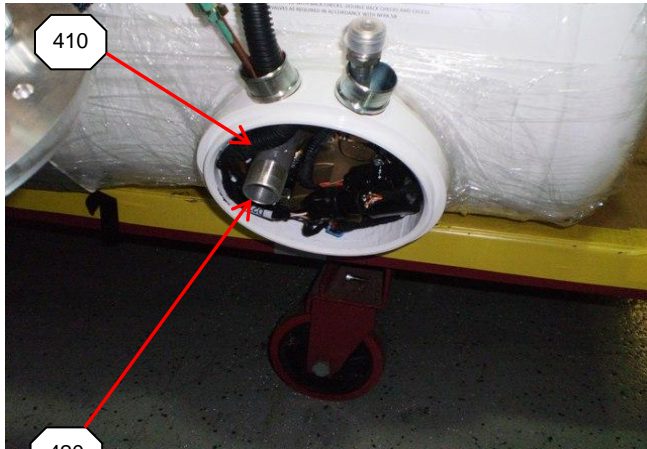
ITEM	PART NUMBER	QTY	DESCRIPTION	TORQUE	TOOLS
PROCESS NAME					REV
MULTIVALVE FUEL PUMP REPLACEMENT INSTRUCTIONS					A
PROCESS NUMBER					PAGE
P11X4-9202-AA					10 OF 13



INSPECTION
TORQUE
CRITICAL PROCESS



ITEM NUMBER
OPERATION



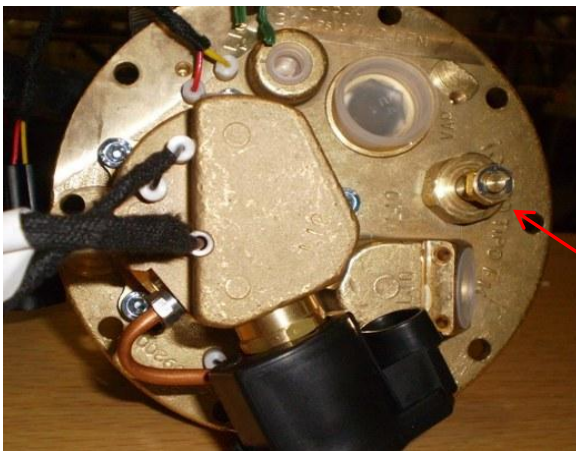
410) CAREFULLY INSERT THE WIRE HARNESS LEADS BACK INTO THE MULTIVALVE COLLAR AS SHOWN

420) OBTAIN THE COLLAR COVER REMOVED IN STEP 40; LOCATE PRV TUBE (IF EQUIPPED) ON MULTIVALVE; ALIGN AND INSERT PRV TUBE INTO LARGE OPENING ON MULTIVALVE COLLAR

430) LOCATE THE AUXILIARY SHUT-OFF KNOB ON THE COVER; ALIGN AND SEAT THE AUXILIARY KNOB SHAFT ONTO THE SHUT-OFF KNOB ON THE MULTIVALVE



440) ALIGN AND SEAT COLLAR COVER ONTO COLLAR



ITEM	PART NUMBER	QTY	DESCRIPTION	TORQUE	TOOLS
PROCESS NAME					REV
MULTIVALVE FUEL PUMP REPLACEMENT INSTRUCTIONS					A
PROCESS NUMBER					PAGE
P11X4-9202-AA					12 OF 13

