



General

All the 12-volt DC items in the Harley-Davidson Heated Clothing line may be used alone or in any combination, as long as they do not exceed the maximum amperage allowed by your motorcycle. See the last pages of this instruction sheet or the Service Manual for your model motorcycle for more detailed information on amperage.

Harley-Davidson Battery Operated Heated Gloves (98356-09VM, 98349-09VW) are 7-volt DC and operate with a 7-volt portable battery. See Harley-Davidson Heated Clothing Battery Operated Instructions section of this booklet for more detailed instructions on use and care.

Note: A Service Manual for your model motorcycle is available from any Harley-Davidson dealer.

The following 12-volt heated clothing items are available from any Harley-Davidson Dealer:

Description	Part Number
H-D Heated Jacket Liner (plug-in only).....	98324-09VM/98351-09VW
H-D Heated Vest Liner (plug-in only).....	98325-09VM
H-D Heated Pant Liner (plug-in only).....	98326-09VM
H-D Heated Gloves (plug-in only).....	98323-09VM/98350-09VW

Above items each include a Connecting Harness and Power Switch (see below). Gloves also include a 3-Prong Harness.

Note: To use the Heated Vest Liner with both the Pant Liner and Gloves, and to use the Portable Thermostat or Power Switch with the Jacket Liner and to power the Gloves at the same time, it will be necessary to purchase the "Y"-Plug Splitter, part number 98539-04V, available at any Harley-Davidson Dealer.

The following accessories and replacement parts may be purchased separately from any Harley-Davidson Dealer:

Description	Part Number
Connecting Harness (battery to controller).....	98536-04V
Power Switch (on/off switch).....	98115-04V
Portable Thermostat (to regulate temperature).....	98540-04V
Dual Control Thermostat (regulates two garments).....	98541-04V
3-Prong Harness (for gloves alone).....	98537-04V
"Y"-plug splitter (for two garments plus gloves).....	98539-04V

Note: The items above all have coaxial connectors. In order to use previously purchased Harley-Davidson heated garments having S.A.E. plugs with these items, one or more of the following adapters may be necessary. These adapters can be purchased from any Harley-Davidson Dealer.

HARLEY-DAVIDSON® HEATED CLOTHING — INSTRUCTIONS

Description	Part Number
Controller Adapter (White):	
S.A.E. connector to coaxial socket.....	98543-04V
Female Pant Adapter (Yellow):	
S.A.E. connector to coaxial plug.....	98544-04V
Male Pant Adapter (Yellow):	
S.A.E. connector to coaxial plug.....	98545-04V

Note: Please read all the warnings and cautions that follow for proper usage of your Harley-Davidson Heated Clothing.

WARNING

To reduce the risk of burns, electric shock and fire, which could result in death or serious injury, the Harley-Davidson Heated Clothing must be used in accordance with the following instructions:

- Use the Harley-Davidson Heated Clothing on a 12-Volt DC circuit only.
- Use appropriate size fuse for your Harley-Davidson Heated Clothing riding gear combinations. See 12-Volt Battery Harness Fuse Installation Guide.
- Unplug the Harley-Davidson Heated Clothing when not in use.
- Harley-Davidson Heated Clothing is not to be used by an invalid, sleeping or unconscious person, a person with poor blood circulation, a paralyzed person or a person with diabetes.
- Do not use the cord as a handle.
- Do not crush the Harley-Davidson Heated Clothing and avoid sharp folds.
- Do not wear the Harley-Davidson Heated Vest or Jacket directly next to the body. These items are designed to be worn with a light shirt underneath.
- Never fold or store Harley-Davidson Heated Clothing while plugged into the motorcycle.
- Save these instructions.

CAUTION

It is possible to overload your motorcycle's charging system by adding too many electrical accessories. If your combined electrical accessories operating at any one time consume more electrical current than your vehicle's charging system can produce, the electrical consumption can discharge the battery and cause vehicle electrical system damage.

See a Harley-Davidson dealer for advice about the amount of current consumed by additional electrical accessories, or for necessary wiring changes. (00211a)

Note: See Section 8 of the Service Manual for additional information on testing for voltage output and amperage draw.



12-Volt Battery Harness Fuse Installation Guide

WARNING ⚠

- Heated riding gear must be used in accordance with the manufacturer's specifications and instructions. Use a fuse rated for the riding gear combination selected.
- Using a higher heated fuse than required by the riding gear combination selected can fail to protect the circuit, which could result in a fire causing possible death or serious injury or damage to the riding gear and motorcycle.

NOTICE ⚠

- Using a lower rated fuse than specified can result in the fuse blowing and the product not working as designed.
- Follow included chart for the recommended size fuse for your application.
- Depending on packaging, your provided battery harness may not come with a pre-installed fuse. View the chart and choose the correct size fuse for your clothing combination.
- If your harness came with a fuse installed you will need to take note what size it is. Review the chart and replace the installed fuse with the correct size for your clothing combination.
- When you add or change the combination of items, check the fuse requirements and change as needed.
- Keep this chart for future reference.

HARLEY-DAVIDSON® HEATED CLOTHING — INSTRUCTIONS

PRODUCT	GLOVES	SOCKS	JACKET	PANTS	VEST
AMP DRAW	2.2	2.2	6.4	4	5.4
	per pair	per pair	each	each	each

Example:

Gloves @ 2.2 amps + Jacket @ 6.4 amps = 8.6 amps

Fuse required = 10 amp

Use the lowest rated fuse that is rated above your calculated total current draw

FUSE SET

COLOR	VIOLET	TAN	BROWN	RED	BLUE
AMP	3	5	7.5	10	15

Questions: 1-800-646-5916 techsupport@gerbing.com

Connecting Harness Installation

WARNING

To prevent accidental vehicle start-up, which could cause death or serious injury, disconnect battery cables (negative cable first) before proceeding.

WARNING

Disconnect negative (-) battery cable first. If positive (+) cable should contact ground with negative (-) cable connected, the resulting sparks can cause a battery explosion, which could result in death or serious injury. (00049a)

1. Refer to the SEAT and BATTERY sections of your Owner's or Service Manual. Remove the seat and disconnect the battery cables, negative cable first.

WARNING ⚠

Use only the connecting harness supplied with your Harley-Davidson Heated Clothing. **DO NOT** use the battery tender harness that may already be installed on your motorcycle.

Failure to install the positive ring terminal (with fuse) of the supplied connecting harness to the positive (+) battery terminal could result in burns, electrical shock and fire which could result in death or serious injury.

WARNING ⚠

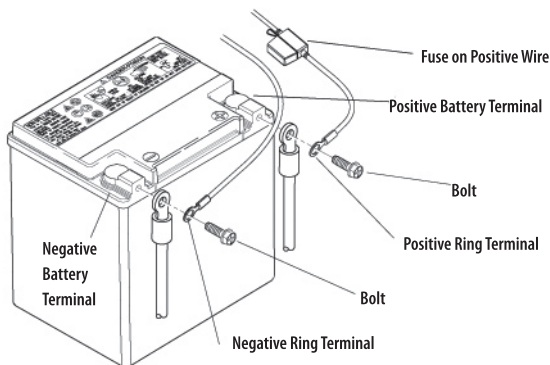
Connect positive (+) battery cable first. If positive (+) cable should contact ground with negative (-) cable connected, the resulting sparks can cause a battery explosion, which could result in death or serious injury. (00068a)

2. See Figure 2. Install the positive ring terminal of the connecting harness to the battery as follows:

- a. Place the positive ring terminal from the connecting harness (the cord with the fuse) onto the positive battery screw.
- b. Place the positive battery cable ring terminal onto the screw threads.
- c. Reattach the screw to the positive battery terminal, but do not tighten at this time (see step 6).

I04440.TIF

Figure 2. Positive and Negative Battery Terminals

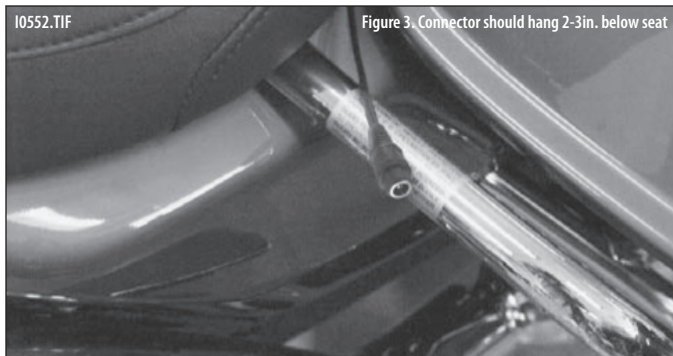


3. Install the negative ring terminal of the connecting harness to the battery as follows:
 - a. Place the negative ring terminal from the connecting harness (the cord without the fuse) onto the negative battery screw.
 - b. Place the negative battery cable ring terminal onto the screw threads.
 - c. Reattach the screw to the negative battery terminal, but do not tighten at this time (see step 6).

WARNING

Be certain the Connecting Harness cords are not pinched. A pinched cord could result in a fire or electrical damage to the motorcycle and/or riding gear which could result in death or serious injury.

4. Secure the Connecting Harness cords to the motorcycle frame with cable straps. Be certain the cords, fuse and connector will not be pinched.
5. See Figure 3. The Connecting Harness socket should hang out under the left-hand side of the seat about 2 to 3 inches (50-75 mm).



6. Tighten the battery screws, negative side first, then reinstall the seat.

WARNING

After installing seat, pull upward on front of seat to be sure it is in locked position. While riding, a loose seat can shift causing loss of control, which could result in death or serious injury. (00070a)

- e. Connector should hang 2-3 in. below seat

Connecting Heated Clothing

WARNING ⚠

Harley-Davidson Heated Clothing must be used with the provided power switch (H-D part number 98115-04V) or with an available thermostat (H-D part number 98540-04V or 98541-04). Failure to do so may cause burns, which could result in serious injury.

WARNING ⚠

If Harley-Davidson Heated Clothing will be worn by both rider and passenger, install two battery harnesses (H-D part number 98536-04V) to the battery terminals.

Do not connect clothing for more than one person to a single red socket terminal, power switch or thermostat. Heated Clothing cords could become entangled, distracting the rider, which could result in death or serious injury.

CAUTION ⚠

Unplug the power cord before getting off the motorcycle. Attempting to get off the motorcycle with the clothing still connected may result in minor or moderate injury.

CAUTION ⚠

Do not plug the power wire into the short plugs located at the waist of the vest liner or at the waist and arms of the jacket liner. These short plugs are intended only to plug in additional garments. Plugging the power wire into the short plugs may cause damage to the garments.

1. Plug the red plug terminal on the standard power switch (see Figure 4) or optional thermostat (Figures 5 or 6) into the red socket terminal from the connecting harness. If the thermostat is not plugged in correctly, it will not work. The latest version of the thermostat controller comes with a leather clip case. There are no Velcro strips provided.

I05545.TIF

Figure 4. Power Switch 98115-04V (Supplied with each garment)

Plug the red plug terminal into the connecting harness.



Plug the white socket terminal directly to the power wire on the Harley-Davidson Heated Clothing.

I05545.TIF

Figure 5. Optional Portable Thermostat 98540-04V

Plug the red plug terminal into the connecting harness.

Plug the white socket terminal directly to the power wire on the Harley-Davidson Heated Clothing.



I05547.TIF

Figure 6. Optional Dual Control Thermostat 98541-04V

Plug the red terminal into the connecting harness.

To provide power to the gloves, plug the black socket terminal directly to the black plug terminal on the jacket liner worn by the same person. You can also use the black socket terminal to power a second garment worn by the same person.

Plug the white socket terminal directly to the power wire on the Harley-Davidson Heated Clothing.



2. The white socket terminal at the other end of the power switch or optional thermostat (and the black socket terminal on the Dual Control Thermostat) connects directly to the power wire on Harley-Davidson Heated Clothing as follows:

• **Harley-Davidson Heated Jacket Liner:** See Figure 7. The long, white plug terminal at the waist is the garment's power wire. Plug the power wire directly into the white socket terminal on the power switch or thermostat.

I05548.TIF

Figure 7. Harley-Davidson Heated Jacket Liner

Glove plugs may be stored in convenient pockets when not in use.

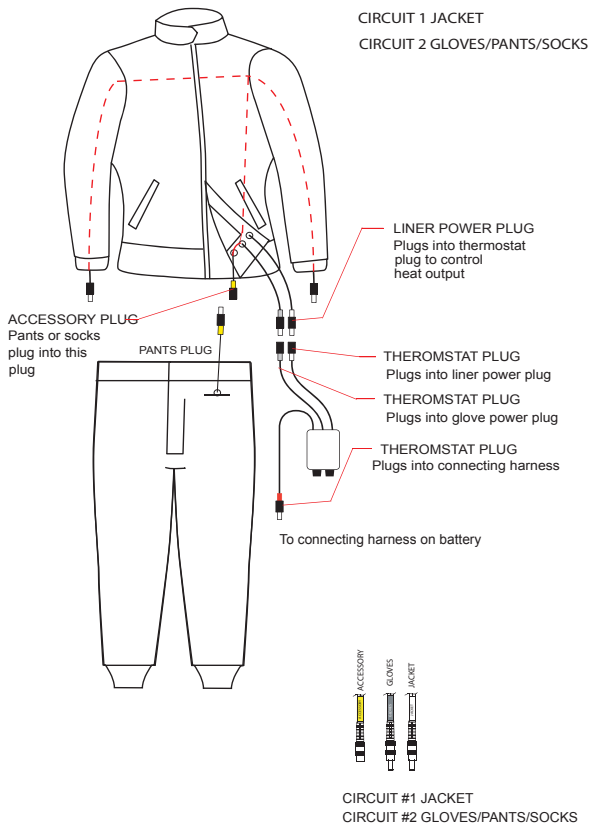


The jacket liner has a short yellow socket terminal (labeled Accessory), also at the waist, which can provide power to an additional garment, such as heated socks or the Harley-Davidson Heated Pant Liner.

In addition, there are short black socket terminals at the end of each arm which can be used to plug in Harley-Davidson Heated Gloves. A black plug terminal (labeled Glove) at the waist provides power to the gloves:

- Connect the black socket terminal from the Dual Control Thermostat to this plug
 - If a Dual Control Thermostat is not used and you opt to use a Power Switch or Portable Thermostat:
 - Follow directions below to use a Power Switch or Portable Thermostat to supply power to glove terminals at the sleeves:
 1. Use "Y"-plug splitter part number 98539-04V
 2. Connect the two socket terminals (female) to both black plug terminal (male) and the white plug terminal (male) from the jacket liner.
 3. Connect the remaining plug terminal (male) to the white socket terminal on the Power Switch or Portable Thermostat. This is needed to supply power to the glove terminals at the sleeves (see Figure 10).

Figure 9. 98324-09VM/98351-09VW Jacket Liner and Pants with Dual Control Thermostat



There are convenient pockets in the jacket liner to store the glove terminals when not in use.

HARLEY-DAVIDSON® HEATED CLOTHING — INSTRUCTIONS

• **Harley-Davidson Heated Vest Liner:** The long, white plug terminal at the waist is the garment's power wire. Plug the power wire directly into the white socket terminal on the power switch or thermostat.

The vest liner has a short yellow socket terminal, also at the waist, which can provide power to an additional garment, such as heated gloves, heated socks or the Harley-Davidson Heated Pant Liner.

• To use the Heated Vest Liner with both the Gloves and Pant Liner, the Harley Davidson "Y"-Plug Splitter (part number 98539-04V, available at any Harley Davidson Dealer) must be used.

Connect the plug of the splitter into the yellow socket terminal at the waist of the vest, and the two plugs of the splitter for the gloves and pant liner.

• **Harley-Davidson Heated Pant Liner:** The yellow plug terminal at the waistband is the garment's power wire. Plug the power wire directly into the white socket terminal on the power switch or thermostat.

If the Pant Liner is worn with either the Harley Davidson Heated Jacket Liner or Vest Liner, the pants may be plugged directly into the yellow socket terminal located at the waist of the jacket or vest.

The pant liners also have short plugs at the end of each leg which are to be used to plug in heated socks. There are convenient pockets to store the pant leg plugs when not in use.

• **Harley-Davidson Heated Gloves:** See Figure 8. When used with the Harley Davidson Heated Jacket Liner, the gloves may be plugged directly into the plugs at the end of each arm.

I05551.TIF

Figure 8. Harley-Davidson Heated Glove

Gloves may be plugged directly into the black socket terminals provided on the Harley-Davidson Heated Jacket Liner or the 3-Prong Harness provided with the gloves if worn without the jacket.

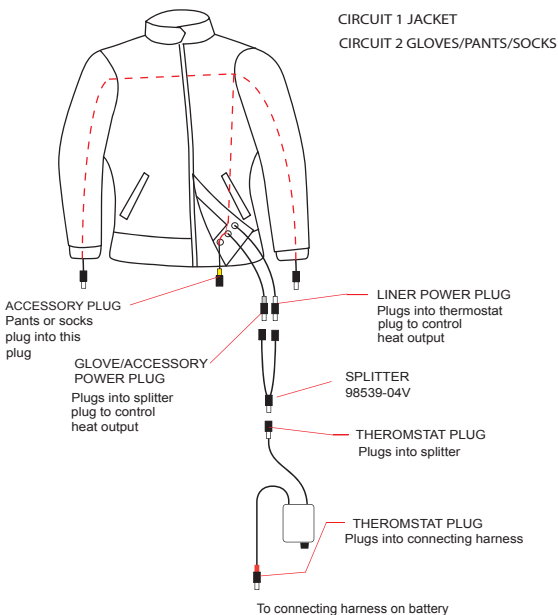


When used without the jacket liner, plug the 3-Prong Harness (H-D part number 98537-04, included with the gloves) directly into the white socket terminal on the power switch or thermostat. The harness is long enough so that the cords can run up inside a shirt or jacket and extend down the sleeves to plug into the gloves.

Connecting Multiple Garments

The following illustrations show some typical garment combinations and the correct connection methods to use.

Figure 10. 98324-09VM/98351-09VW Jacket Liner with Single Control Thermostat/Power Switch



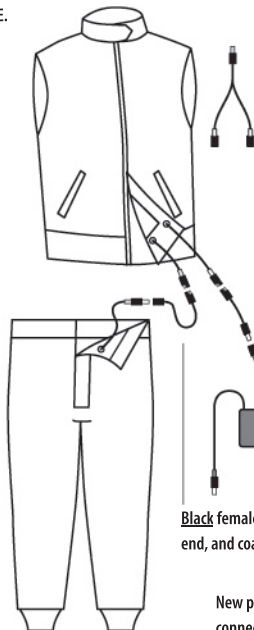
Guidelines

- Use only the harnesses, switches and thermostats provided with or sold specifically for use with your Harley-Davidson Heated Clothing.
- For maximum liner warmth, keep the wind off of your Harley-Davidson Heated Jacket, Vest or Pant Liners. Your heated liner should be worn under windproof clothing.
- Wear only one layer of clothing under your Harley-Davidson Heated Clothing. A cotton or silk turtleneck under your heated vest or jacket liner is ideal.
- If your Harley-Davidson Heated Clothing does not heat, check all connections for tightness and wires for proper routing and connection. Also check the fuse on the connecting harness. If the thermostat does not operate, check to be sure it is plugged in correctly, per instructions in Step 1.

I05555.TIF

Figure 11. Old Vest to New Pant Liner with Single Control Thermostat

Old Vest with S.A.E. style connector at waist.



"Y"-plug splitter has a coaxial plug at one end, and two coaxial sockets at the other end to connect vest liner, pant liner, and gloves when worn together.

White controller adapter has S.A.E. connector at one end, and coaxial socket at the other end.

Single control thermostat connects between battery harness and garment to switch on and off, and regulate temperature.

Red plug to battery connect harness.

Black female pant adapter has S.A.E. connector at one end, and coaxial plug at the other end.

New pant liner with coaxial connector at waistband.

CAUTION 

It is possible to overload your motorcycle's charging system by adding too many electrical accessories. If your combined electrical accessories operating at any one time consume more electrical current than your vehicle's charging system can produce, the electrical consumption can discharge the battery and cause vehicle electrical system damage.

See Harley-Davidson dealer for advice about the amount of current consumed by additional electrical accessories, or for necessary wiring changes. (00211a)

Note: See Section 8 of the Service Manual for additional information on testing for voltage output and amperage draw.

Average Amperage Draw Per Item

Item	Wattage With a 12 volt battery	
Jacket Liner	77 Watts	6.00 Amps (cold)
Vest Liner	54 Watts	3.87 Amps (cold)
Pant Liner	44 Watts	3.87 Amps (cold)
Gloves	22 Watts	2.28 Amps (cold)

CAUTION 

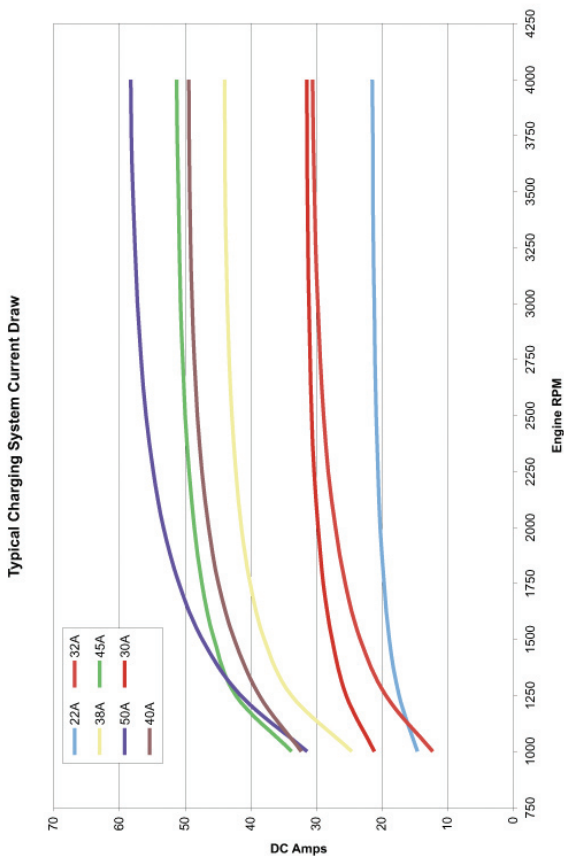
Do not switch on the Harley-Davidson Heated Clothing if the motorcycle engine is turned off or running below the indicated engine speed or damage to the garments and electrical system may occur.

Note: The garments may be switched on as long as the engine speeds indicated in the following charts are maintained. See the "Typical Charging System Maximum Output" Chart (Figure 12) and the Family Chart specific to your motorcycle.

Note: Be aware that other electrical loads, such as lamps, may already be present. These loads will reduce the amperage available for the heated garments, and the recommendations must be modified accordingly.

Remember, you must add up the amperage draw and battery requirements of all electrical items in use.

Figure 12. Typical Charging System Maximum Output



XL Motorcycle Family

Garment Type	Power Required (Watts)	Load Current (Amps)	Alternator Type	Available Amps @ R.P.M.			Recommendation
				1000	1500	3000	
Jacket Liner	77	5.9	22	-3.7	2.1	5.4	Ok above 1500 R.P.M.
Vest Liner	54	4.15	22	-1.95	3.85	7.15	
Pants Liner	44	3.4	22	-1.2	4.6	7.9	
Gloves	22	1.7	22	0.5	6.3	9.6	OK at 1000 R.P.M.
Assumptions: Nominal Current Usage = 8 Amps; 2 Amps needed to maintain battery charge.							

FX Motorcycle Family

Garment Type	Power Required (Watts)	Load Current (Amps)	Alternator Type	Available Amps @ R.P.M.			Recommendation
				1000	1500	3000	
Jacket Liner	77	5.9	38	-6.1	5.9	12.7	Ok above 1500 R.P.M.
Vest Liner	54	4.15	38	-4.35	7.65	14.45	
Pants Liner	44	3.4	38	-3.6	8.4	15.2	
Gloves	22	1.7	38	-1.9	10.1	16.9	
Assumptions: Nominal Current Usage = 16 Amps; 2 Amps needed to maintain battery charge.							

FXD Motorcycle Family (2003 and Earlier)

Garment Type	Power Required (Watts)	Load Current (Amps)	Alternator Type	Available Amps @ R.P.M.			Recommendation
				1000	1500	3000	
Jacket Liner	77	5.9	32	-4.4	6.7	14.0	Ok above 1500 R.P.M.
Vest Liner	54	4.15	32	-2.65	8.45	15.75	
Pants Liner	44	3.4	32	-1.9	9.2	16.5	
Gloves	22	1.7	32	-0.2	10.9	18.2	
Assumptions: Nominal Current Usage = 8 Amps; 2 Amps needed to maintain battery charge.							

HARLEY-DAVIDSON® HEATED CLOTHING — INSTRUCTIONS

Note: The garments may be switched on as long as the engine speeds indicated in the following charts are maintained. See the “Typical Charging System Maximum Output” Chart (Figure 10) and the Family Chart specific to your motorcycle.

Note: Be aware that other electrical loads, such as lamps, may already be present. These loads will reduce the amperage available for the heated garments, and the recommendations must be modified accordingly.

Remember, you must add up the amperage draw and battery requirements of ALL electrical items in use.

FXD Motorcycle Family (2004 and Later)

Garment Type	Power Required (Watts)	Load Current (Amps)	Alternator Type	Available Amps @ R.P.M.			Recommendation
				1000	1500	3000	
Jacket Liner	77	5.9	38	-6.1	5.9	12.7	Ok above 1500 R.P.M.
Vest Liner	54	4.15	38	-4.35	7.65	14.45	
Pants Liner	44	3.4	38	-3.6	8.4	15.2	
Gloves	22	1.7	38	-1.9	10.1	16.9	
Assumptions: Nominal Current Usage = 16 Amps; 2 Amps needed to maintain battery charge.							

FL (EFI) Motorcycle Family

Garment Type	Power Required (Watts)	Load Current (Amps)	Alternator Type	Available Amps @ R.P.M.			Recommendation
				1000	1500	3000	
Jacket Liner	77	5.9	45	-5.7	6.5	12.3	Ok above 1500 R.P.M.
Vest Liner	54	4.15	45	-3.95	8.25	14.05	
Pants Liner	44	3.4	45	-3.2	9.0	14.8	
Gloves	22	1.7	45	-1.5	10.7	16.5	
Assumptions: Nominal Current Usage = 2.5 Amps; 2 Amps needed to maintain battery charge.							

FI (Carbureted) Motorcycle Family

Garment Type	Power Required (Watts)	Load Current (Amps)	Alternator Type	Available Amps @ R.P.M.			Recommendation
				1000	1500	3000	
Jacket Liner	77	5.9	38	-4.1	7.9	14.7	Ok above 1500 R.P.M.
Vest Liner	54	4.15	38	-2.35	9.65	16.45	
Pants Liner	44	3.4	38	-1.6	10.4	17.2	
Gloves	22	1.7	38	0.1	12.1	18.9	
Assumptions: Nominal Current Usage = 14 Amps; 2 Amps needed to maintain battery charge.							

VRSC Motorcycle Family

Garment Type	Power Required (Watts)	Load Current (Amps)	Alternator Type	Available Amps @ R.P.M.			Recommendation
				1000	1500	3000	
Jacket Liner	77	5.9	38	-11.1	0.9	7.7	Ok above 1500 R.P.M.
Vest Liner	54	4.15	38	-9.35	2.65	9.45	
Pants Liner	44	3.4	38	-8.6	3.4	10.2	
Gloves	22	1.7	38	-6.9	5.1	11.9	
Assumptions: Nominal Current Usage = 21 Amps; 2 Amps needed to maintain battery charge.							

FL Motorcycle Family (2007 and Later)

Garment Type	Power Required (Watts)	Load Current (Amps)	Alternator Type	Available Amps @ R.P.M.			Recommendation
				1000	1500	3000	
Jacket Liner	77	5.9	50	.053	16.47	26.36	Ok above 1500 R.P.M.
Vest Liner	54	4.15	50	2.28	18.22	28.11	
Pants Liner	44	3.4	50	3.03	18.97	28.86	
Gloves	22	1.7	50	4.73	20.67	30.56	
Assumptions: Nominal Current Usage = 25 Amps; 2 Amps needed to maintain battery charge.							

FXD Motorcycle Family (2007 and Later)

Garment Type	Power Required (Watts)	Load Current (Amps)	Alternator Type	Available Amps @ R.P.M.			Recommendation
				1000	1500	3000	
Jacket Liner	77	5.9	40	10.41	20.61	27.03	Ok above 1500 R.P.M.
Vest Liner	54	4.15	40	12.16	22.36	28.78	
Pants Liner	44	3.4	40	12.91	23.11	29.53	
Gloves	22	1.7	40	14.61	24.81	31.23	
Assumptions: Nominal Current Usage = 16 Amps; 2 Amps needed to maintain battery charge.							

FX Motorcycle Family (2007 and Later)

Garment Type	Power Required (Watts)	Load Current (Amps)	Alternator Type	Available Amps @ R.P.M.			Recommendation
				1000	1500	3000	
Jacket Liner	77	5.9	40	10.41	20.61	27.03	Ok above 1500 R.P.M.
Vest Liner	54	4.15	40	12.16	22.36	28.78	
Pants Liner	44	3.4	40	12.91	23.11	29.53	
Gloves	22	1.7	40	14.61	24.81	31.23	
Assumptions: Nominal Current Usage = 16 Amps; 2 Amps needed to maintain battery charge.							

XL Motorcycle Family (2007 and Later)

Garment Type	Power Required (Watts)	Load Current (Amps)	Alternator Type	Available Amps @ R.P.M.			Recommendation
				1000	1500	3000	
Jacket Liner	77	5.9	30	-0.7	5.72	9.24	Ok above 1500 R.P.M.
Vest Liner	54	4.15	30	1.05	7.47	10.99	
Pants Liner	44	3.4	30	1.8	8.22	11.74	
Gloves	22	1.7	30	3.5	9.92	13.44	
Assumptions: Nominal Current Usage = 16 Amps; 2 Amps needed to maintain battery charge.							

Limited Warranty

When you purchase this Harley-Davidson heated garment within the United States and Europe, the electrical components of the garment are warranted to be free from factory defects in materials and workmanship for the life of the garment. All other components of the garment are warranted to be free from factory defects in materials and workmanship for a period of one (1) year from the date of the first retail purchase.

If you have a warranty claim, please return the garment together with the original receipt and warranty card within the warranty period to any authorized Harley-Davidson dealer for inspection. Harley-Davidson will repair without charge a heated garment found under normal use to be defective during the warranty period. If we determine that a garment covered by the warranty cannot be repaired, we will replace the garment. Please allow 4-6 weeks for repair or replacement.

This limited warranty sets forth the complete liability and obligations of Harley-Davidson Motor Company for breach of warranty.

This limited warranty does not cover repairs by third parties, rips, scratches, tears, cracks, and wrinkles from abnormal use and tear or exposure, or deterioration caused by ordinary wear and tear or exposure. It also does not cover damage caused by accident, abuse or improper cleaning or care.

This warranty is in lieu of any and all other warranties, express or implied, including those of fitness for a particular purpose and merchantability.

Harley-Davidson shall not be liable for any damages directly or indirectly related to Harley-Davidson heated garments, including without limitation any damages for injury to persons or property occurring while anyone is wearing a Harley-Davidson heated garment.

Without limiting the foregoing, Harley-Davidson shall not be liable for loss of use, inconvenience, lost time, commercial loss or other incidental or consequential damages.

The foregoing limitations of liability shall apply to the full extent permitted by law.

Some states or countries do not allow the exclusion or limitation of incidental or consequential damages or limitations on how long an implied warranty lasts, so the above limitations and exclusions may not apply to you. This warranty gives you specific legal rights, and you may have other rights which vary from jurisdiction to jurisdiction.

U.S.A.:

Gerbing's Heated Clothing Inc.
Attn: Warranty Department
1145 85th Ave SE
Tumwater, WA 98501
Phone: 800-646-5916

Europe:

Gerbing's Heated Clothing Inc.
Attn: Warranty Department
Graaf van Lijndenlaan 3
7316 EG Apeldoorn, The Netherlands
Tel: +31 555 788 788
Fax: +31 555 785 104
Email: info@gerbing.nl
Internet: www.gerbing.nl

Harley-Davidson Battery Operated Heated Gloves (98356-09VM, 98349-09VW) are a 7-volt DC and operate with a 7-volt portable battery. See Harley-Davidson Heated Clothing Battery Operated Instructions section of this booklet for more detailed instructions on use and care.

The following battery operated heated clothing items are available from any Harley-Davidson Dealer:

Description	Part Number
H-D Battery Operated Heated Vest Liner (12-volt).....	98355-09VM
H-D Battery Operated Heated Gloves (7-volt).....	98356-09VM/98349-09VW
H-D Battery Operated Heated Vest 12-volt Battery.....	98547-09V
H-D Battery Operated Heated Gloves 7-volt Battery.....	98548-09V

Note: Please read all the warnings and cautions that follow for proper usage of your Harley-Davidson Heated Clothing.

H-D Battery Operated Heated Vest Liner

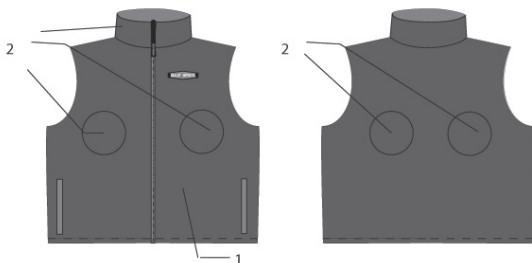
CAUTION

- Only use the charger provided, otherwise it may cause a fire
- Recharge battery after extended periods of non-use (> 6 months)
- Stop using the battery if unit is damaged or is malfunctioning
- The battery life will be reduced the longer it is used and if stored below -4 F (20 C) or above 100 F (38 C)
- Do not attempt to disassemble the battery unit
- Do not drop and avoid unnecessary external shock and impact
- Do not expose battery to humid or wet conditions. If water or other liquids enter battery interior, immediately unplug the product from the battery. Continued use of product in wet conditions may result in fire or electrical shock
- Do not place battery near a heat source
- Do not expose the battery to direct flame, heat or direct sunlight, as the battery may explode
- Keep out of reach of children. Do not allow children to put battery in his/her mouth
- Use vest as directed
- Do not use any chemical cleaner, use dry cloth to clean battery unit
- Do not try and force the connectors together between battery and charger
- Do not make sharp folds in vest
- Check skin frequently when using the vest to prevent burns
- Do not wear heated vest with other torso heating equipment
- When vest is wet allow to dry before wearing
- To clean vest remove battery then machine wash and hang dry

- Do not wear while sleeping
- Do not use vest if wearing other electronic health equipment

- 1) Battery unit
- 2) Heating elements

Figure 13. Harley-Davidson Heated Vest Liner



1) Instructions for using the portable battery

- Fully charge the Li-Polymer battery as soon as you open the package
- Feed the controller leads thru rubber grommet inside left pocket
- Connect the Nano-Wire Heating pad system by plugging into the DC plug from the vest into the mini-controller plug
- Plug the controller into the battery to set the temperature level by pushing the "ON" button and again up to two more times for max heat
- Store battery in the pocket inside of the vest
- Wait 5 minutes after putting the vest on and then re-adjust the power level to the right temperature for body and weather conditions

2) Instructions for using the motorcycle battery

- Remove plug from portable battery
- Feed the plug thru opening at bottom of inside left pocket
- Plug the controller into the bike's connecting harness, an extension may be needed to reach bike
- Set the temperature level by pushing the "ON" button and again up to two more times for max heat
- Wait 5 minutes after putting vest on and then re-adjust the power level to the right temperature for your body and weather conditions

3) Temperature setting

- The controller unit has three temperature levels for heating: 1 (86°F), 2 (104°F), 3 (122°F)
- Push the "ON" button for 1 second to switch on. You can set the temperature in three levels (color changing LED indicator)
- After 8 seconds you can see the actual battery capacity (9-0), 9-fully charged, 0-discharged
- Approximate run time of battery for the 4000 mah battery capacity
 - Level 1 – 3 hours..... Green LED
 - Level 2 – 1.5 hours.....Yellow LED
 - Level 3 – 1 hour.....Red LED

4) Battery unit charging (See Battery BATLI124 Product Manual)

- New batteries should be charged until the LED turns green on the charger. Use only the provided AC/DC charger. Charge battery right after you open the box
- During the charging, the battery will indicate charging status
- The battery can be used up to 700 times, fully charged
- To fully charge the battery it will take at least 4 hours

5) Storage instructions for the battery

- Unplug the vest from the battery unit and store battery in a dry area
- Recharge the battery before use if battery has been sitting unused for a long period of time

6) Vest cleaning

- Vest is machine washable, hang dry
- Use dry cloth to clean the heating system
- Remove battery and controller before washing

H-D Battery Operated Heated Gloves

CAUTION

- Only use the charger provided, otherwise it may cause a fire
- Recharge battery after extended periods of non-use (> 6 months)
- Stop using the battery if the unit is damaged or is malfunctioning
- The battery life will be reduced the longer it is used and if stored below -4 F (20 C) or 100 F (38 C)
- Do not attempt to disassemble the battery unit
- Do not drop and avoid unnecessary external shock or impact
- Do not expose the battery to wet conditions. If water or other liquids enter battery interior,

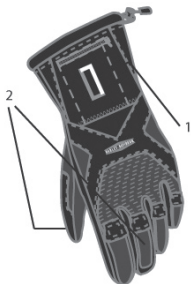
immediately unplug the product from the battery. Continued use of product in wet conditions may result in fire or electrical shock

- Do not place battery near a heat source
- Do not expose the battery to direct flame, heat or direct sunlight, as the battery may explode
- Keep out of reach of children. Do not allow children to put battery in his/her mouth.
- Use gloves as directed, cannot be plugged into 12-volt products
- Do not use any chemical cleaner, use dry cloth to clean battery unit
- Do not try and force the connectors together between battery and charger
- Check skin frequently when using the gloves to prevent burns
- Do not wear heated gloves with other heated glove equipment
- Do not wear while sleeping

1) Battery unit

2) Heating elements

Figure 14. Harley-Davidson Heated Gloves



- Heating system provides heat to each finger and thumb as well as the top of the hand

1) Instructions for use

- Fully charge the Li-Ion battery as soon as you open the package
- Connect the Micro-Wire Heating system plug into the DC jack on the battery
- Push the "ON" button 1> second to switch on
- Store battery in the pocket inside of the glove when operating
- Wait 5 minutes after putting the glove on and then re-adjust the power level to the right temperature for your hand and weather conditions

2) Temperature setting

- The battery has a four level push controller: at highest level it will reach up to 135°F at a ambient temp of 70°F
- Push the "ON" button for 1 second to switch on. You can set the temperature in four levels (100%, 75%, 50%, 25%)
- Approximate run time of battery for the 2200 mah battery capacity

Power Consumption	Run Time
Level 1 – 3.5 watts	25% - 4 hours
Level 2 – 7.0 watts	50% - 2 hours
Level 3 – 11.5 watts	75% - 1.5 hours
Level 4 – 14 watts	100% - 1 hour

3) Battery unit charging (See detailed battery BATLI722 R Product Manual)

- New batteries should be charged until the LED turns green on the charger, use the AC/DC charger right after you open the box
- During the charging, you can see the charging level
- The battery can be used up to 500 times, fully charged
- To fully charge the battery it will take at least 3 hours for one battery, 6 hours for 2 batteries

4) Storage instructions for the battery

- Unplug the heat assembly from the battery unit and store battery in a dry area
- Recharge the battery before use if battery has been sitting unused for a long period of time
- Avoid storing in direct sunlight
- Do not store in a humid area

Warranty and Registration Information

When you purchase this H-D product within the United States, all the components of the product are warranted to be free from factory defects in materials and workmanship for 90 days from the date of this initial purchase.

If you have a warranty claim, please return the product together with the original receipt to Gerbing's Heated Clothing for inspection. Gerbing's will repair without charge a product found under normal use to be defective during the warranty period. If we determine that the product covered by the warranty cannot be repaired, we will replace the product. Please allow 4-5 weeks for repair or replacement. Shipping costs are the responsibility of the customer.

This limited warranty sets forth the complete liability and obligations of Gerbing's Heated Clothing, Inc. for breach of warranty.

HARLEY-DAVIDSON® HEATED CLOTHING — BATTERY OPERATED INSTRUCTIONS

This limited warranty does not cover repairs by the third parties, rips, scratches, tears, cracks and wrinkles from abnormal use and tear or exposure or deterioration caused by ordinary wear and tear or exposure. It also does not cover damage caused by accident, abuse, or improper cleaning or care.

THIS WARRANTY IS IN LIEU OF ANY AND ALL OTHER WARRANTIES, EXPRESS OR IMPLIED, INCLUDING THOSE OF FITNESS FOR A PARTICULAR PURPOSE AND MERCHANTABILITY.

GERBING'S HEATED CLOTHING INC. SHALL NOT BE LIABLE FOR ANY DAMAGES DIRECTLY OR INDIRECTLY RELATED TO GERBING'S HEATED PRODUCTS INCLUDING WITHOUT LIMITATION ANY DAMAGES FOR INJURY TO PERSONS OR PROPERTY OCCURRING WHILE ANYONE IS WEARING GERBING'S HEATED PRODUCT.

WITHOUT LIMITING THE FOREGOING, GERBING'S HEATED CLOTHING INC. SHALL NOT BE LIABLE FOR LOSS OF USE, INCONVENIENCE, LOST TIME, COMMERCIAL LOSS OR OTHER INCIDENTAL OR CONSEQUENTIAL DAMAGES.

THE FOREGOING LIMITATIONS OF LIABILITY SHALL APPLY TO THE FULL EXTENT PERMITTED BY LAW.

Some states do not allow the exclusion or limitation of incidental or consequential damages or limitations on how long an implied warranty lasts, so the above limitations and exclusions may not apply to you. This warranty gives you specific legal rights, and you may have other rights which vary from jurisdiction to jurisdiction.

(Please retain this portion for your records)

Register online at www.gerbing.com or fill out information requested below and send postal.

Harley-Davidson Battery Operated Heated Vest Battery BATLI124

WARNING

- Do not place this near an external heat source or expose the battery to direct flame or heat, as the battery may explode, which could result in serious injury or death.
- Do not attempt to disassemble or alter any part of this product.
- Do not store below -4° F (- 20° C) or above 140° F (60° C).
- Do not allow this product to come in contact with water or other liquids. If water or other liquids enter the battery interior, immediately unplug the product from the battery. Continued use of the product may result in fire or an electrical shock.

Disposal

Do not place in fire or incinerate

Do not dispose in refuse

Recycle in accordance with local regulations

CAUTION

Failure to charge the battery prior to use will reduce battery life.

CHARGE BATTERY REGULARLY

It is important to maintain at least 25% of your battery power when not in use. Failure to do this will result in performance problems and reduced battery life.

Be certain to use your battery with products with an amp rating less than the maximum capacity output rating for the battery. For instance, the Li-Polymer battery pack has a maximum capacity output rating of 4 amps and should not be used with heated products that draw more than 4 amps. Please check your products' amp draw before connecting battery pack. Failure to do so can overheat the battery causing damage.

Prior to Use

Before using the BATLI124 it should be fully charged. Please follow the instructions below on how to use and maintain your battery.

Charging and Connecting the BATLI124

To set up the charging process, proceed as follows:

1. Locate the input cable connector for the charger.
2. Plug the AC power cord into a properly rated AC outlet (110v).
3. Plug the chargers' output cord into the battery output port.
4. The battery power level indicator LED is green when it's fully charged or red if charging is needed.
5. Charge the battery until the red LED on the charger is a green color and the number 9 LED on the battery is luminated. The battery is now fully charged.

Power Level Push-button Indicators

Power Level: The BATLI124 battery is equipped with a power level indicator that displays the battery strength in numerical form ranging from 1 to 9. When the level is at the lowest setting (1) it is in serious discharge and needs to be recharged to prevent damage to the battery. When the battery is at the highest level (9) it is fully charged. When not connected to a product, hold down the POWER button to check your power level or battery strength. When connected to a product and desired power setting has been selected, the power level will be displayed after 5 seconds.

NOTICE

Please read the enclosed warnings carefully before using the BATLI124 Li-Polymer battery. Use the product correctly and according to the procedures described in the manual. Save the manual for future reference.

Model: BATLI124

Rating: 11.1v 4Ah

Output power: 11.1v to 12.6v 4.5Amax

Output adjusts 1 – 5 (5 is high)

Input: 12.8v – 1.5A

Capacity: Displays 0 – 9 (9 is full)

Charge Time: 4-6 hours

Harley-Davidson Battered Operated Heated Gloves Battery BAT-LI-722 R

WARNING

- Do not place this near an external heat source or expose the battery to direct flame or heat, as the battery may explode, which could result in serious injury or death.
- Do not attempt to disassemble or alter any part of this product.
- Do not store below -4° F (-20° C) or above 140° F (60° C).
- Do not allow this product to come in contact with water or other liquids. If water or other liquids enter the battery interior, immediately unplug the product from the battery. Continued use of the product may result in fire or an electrical shock.

Disposal

Do not place in fire or incinerate

Do not dispose in refuse

Recycle in accordance with local regulations

CAUTION

Failure to charge battery prior to use will reduce battery life.

CHARGE BATTERY FULLY.

It is important to maintain at least 25% of your battery power when not in use. Failure to do this will result in performance problems and reduced battery life.

Be certain to use your battery with products with an amp rating less than the maximum capacity output rating for the battery. For instance, the Li-ion battery pack has a maximum capacity output rating of 2 amps and should not be used with heated products that draw more than 2 amps. Please check your products' amp draw before connecting the battery pack. Failure to do so can overheat the battery causing damage.

Prior to use

Before using the BATLI722 (R) it should be fully charged. Please follow the instructions below on how to use and maintain your battery.

Charging the BATLI722 (R)

To set up charging process, proceed as follows:

1. Locate the charger's case with the 110v input prongs.
2. Plug the charger into a properly rated AC outlet (110v).
3. Plug the charger output cable(s) into the batteries charging ports.
4. The charger's LED indicator is green when it's fully charged or red if charging is needed.
5. Charge battery until the red LED on the charger is a green color and all four LED's on the battery are illuminated. The battery is now fully charged.

Power Setting Push-button and indicators

The BATLI722 (R) battery packs are equipped with a POWER button that has two separate functions. One is to allow you to check the remaining power or charge in the battery pack and the other allows you to change your power level setting or output.

- The Power Level push-button indicator can only be activated when not connected to a product. The battery's LED lights will display the battery's current power level from 25% to 100%. 100% indicates a full charge. Push and hold POWER button to check battery strength.
- The Power Setting push-button indicator can only be activated while connected to a product. Push and hold POWER button to select your desired setting from 25% to 100% power output. The default setting is 100%.
- When in use, if the batteries' LED starts flashing it is time to recharge your battery. You can extend your battery's run time if you lower the power level. Keep in mind that on the lower level you will get less heat. Do not continue using the battery when it is flashing on the lowest level.

NOTICE

Please read the enclosed warnings carefully before using the BAT-LI-722 (R) Li-ion battery. Use the product correctly and according to the procedures described in the manual. Save the manual for future reference.

BAT-LI-722 R

Designed with an audio beep to aid in adjusting the battery power level without looking.

Model: BATLI722 (R)

Rating: 7.4 volt

Capacity: 2200 mah

Charge Time: 3 – 6 hours



Genuine Harley-Davidson® Quality Since 1903™