



Turbo Air Speeds up the Pace of Innovation

Commercial Refrigerators Service Manual

Please read this manual completely before attempting to install or operate this equipment!

Sandwich / Salad Unit

MST-36

Mega Top Unit

MST-36-15

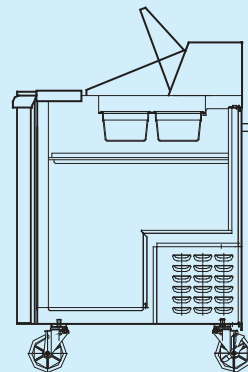
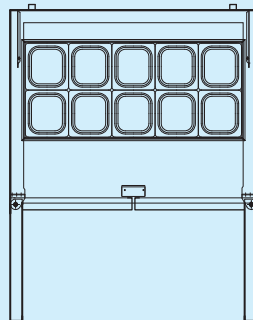


TABLE OF CONTENTS

1. FEATURE CHART

1-1. MST-36-15, MST-36 FRONT VIEW

1-2. MST-36-15, MST-36 SIDE VIEW

2. WIRING DIAGRAMS

3. PART DETAILS

3-1. COMPRESSOR COMPARTMENT

3-2. DOOR

3-3. REFRIGERATION COMPARTMENT

4. MAIN COMPONENTS

5. TEMPERATURE CONTROL INSTRUCTION

5-1. HOW TO USE THE TEMPERATURE CONTROL

5-2. FUNCTION TABLE

6. REPLACEMENT OF MAIN COMPONENTS

6-1. REPLACING DOOR

6-2. REFRIGERATION COMPARTMENT PARTS

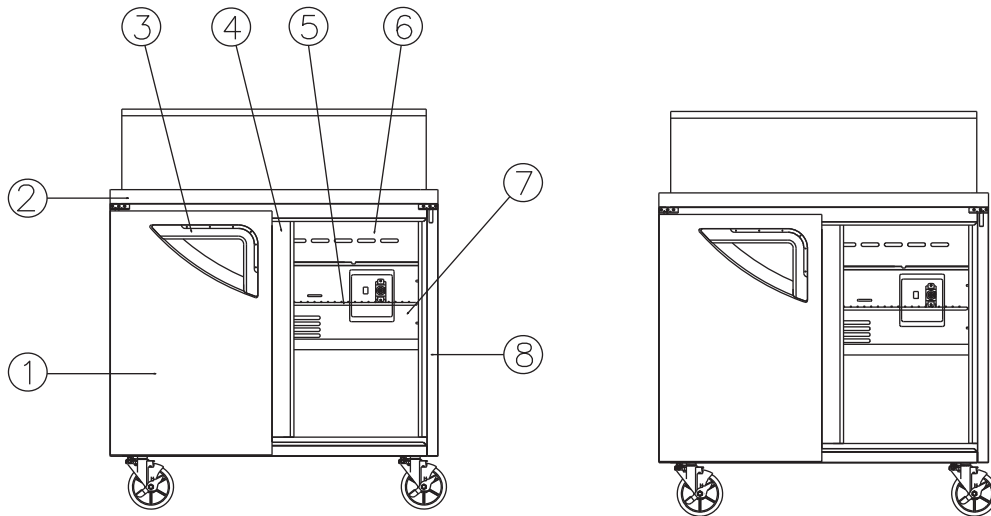
6-3. COMPRESSOR COMPARTMENT PARTS

6-4. REPLACING THE EVAPORATOR & EVAPORATOR FAN MOTOR

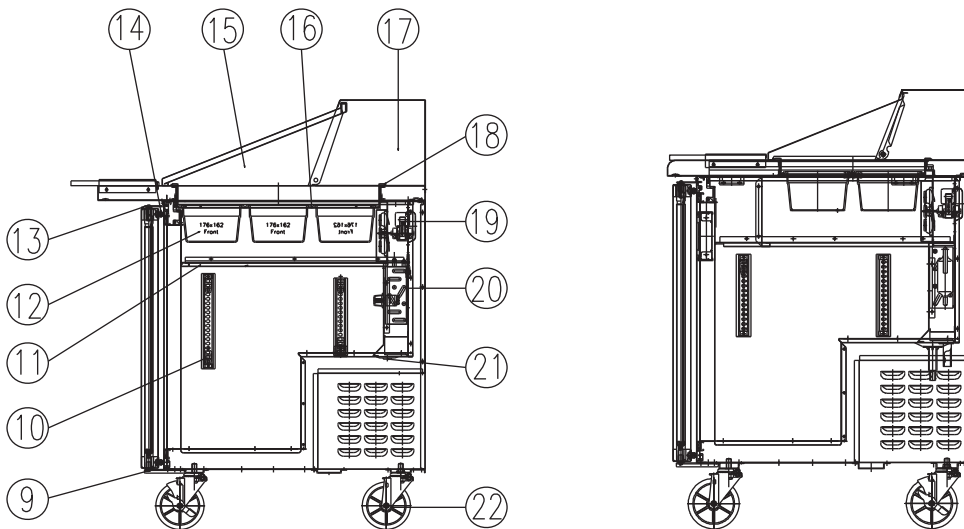
7. PARTS LIST

1. FEATURE CHART

1-1. MST-36-15, MST-36 FRONT VIEW

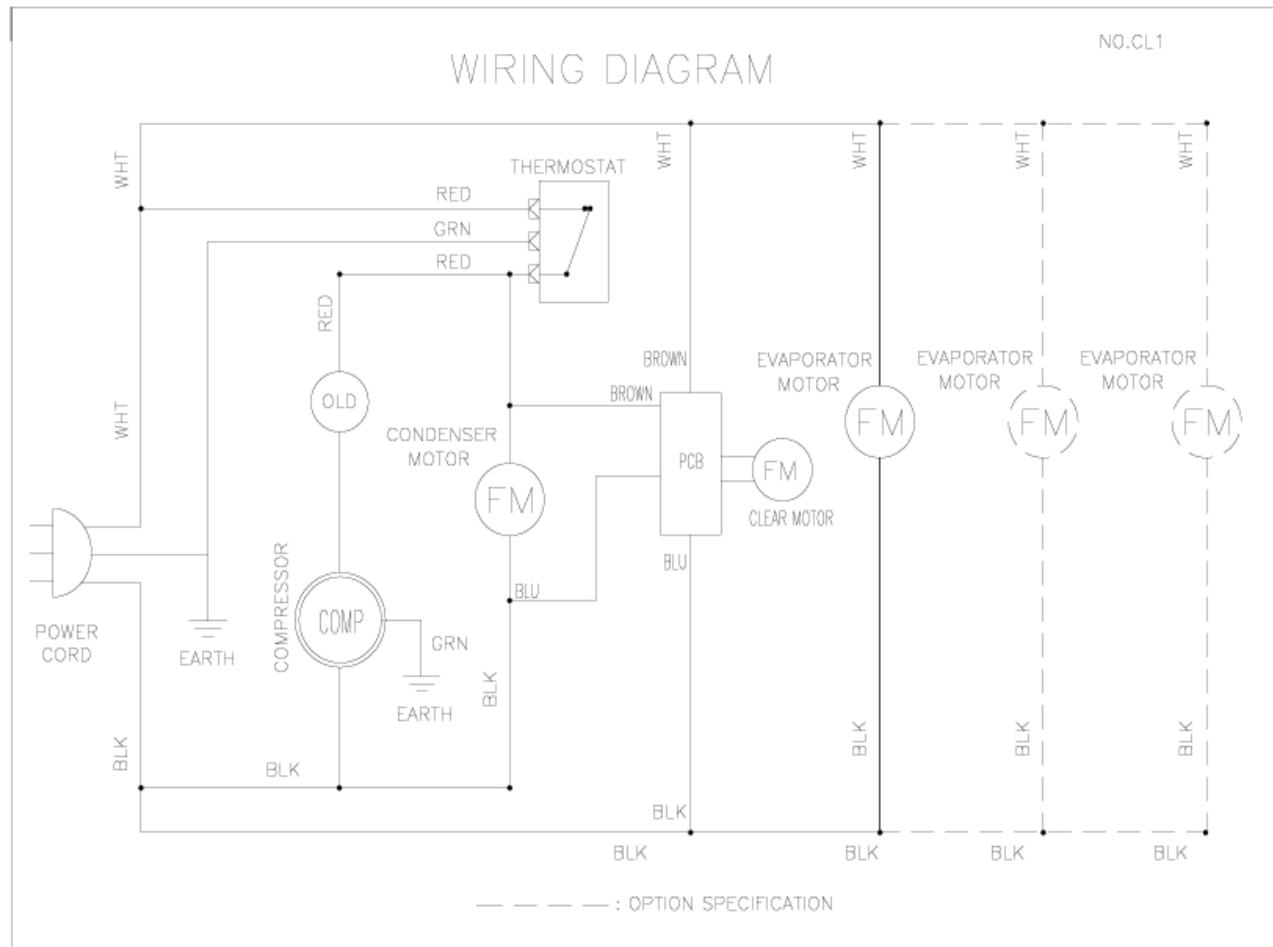


1-2. MST-36-15, MST-36 SIDE VIEW



- | | |
|---------------------|-------------------------|
| 1 DOOR(L) | 12 PAN |
| 2 COUNTER TOP | 13 TOP HINGE |
| 3 DOOR HANDLE(L) | 14 DOOR GASKET |
| 4 MULLION | 15 HOOD LID |
| 5 SHELF(R) | 16 PAN GUIDE |
| 6 LOUVER | 17 HOOD |
| 7 EVAPORATOR DUCT | 18 PAN SUPPORTER |
| 8 CABINET ASSEMBLY | 19 EVAPORATOR FAN MOTOR |
| 9 DOOR BOTTOM HINGE | 20 EVAPORATOR COIL |
| 10 SHELF CLIP | 21 EVAPORATOR DRAIN |
| 11 PAN DUCT | 22 CASTERS |

2. WIRING DIAGRAMS



MST-36-15 / MST-36

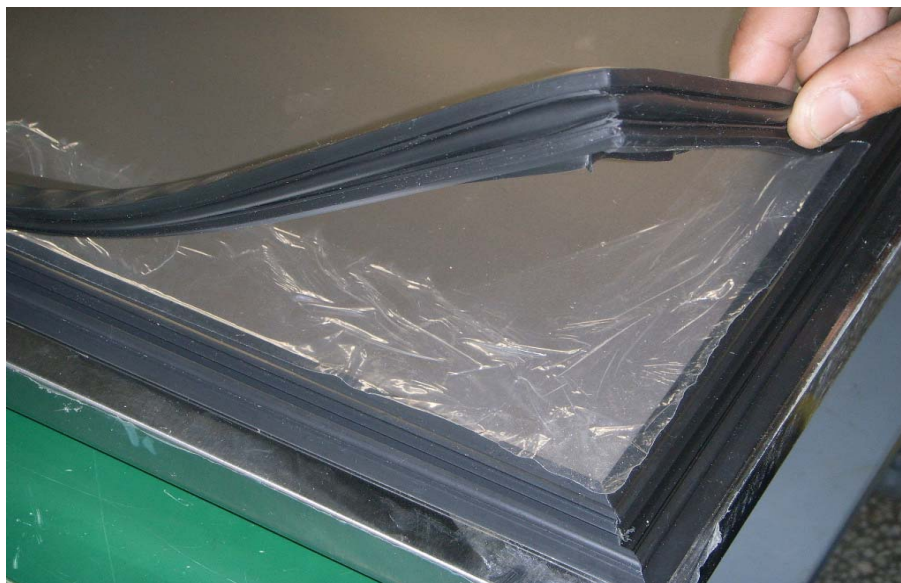
3. PART DETAILS

3-1. COMPRESSOR COMPARTMENT



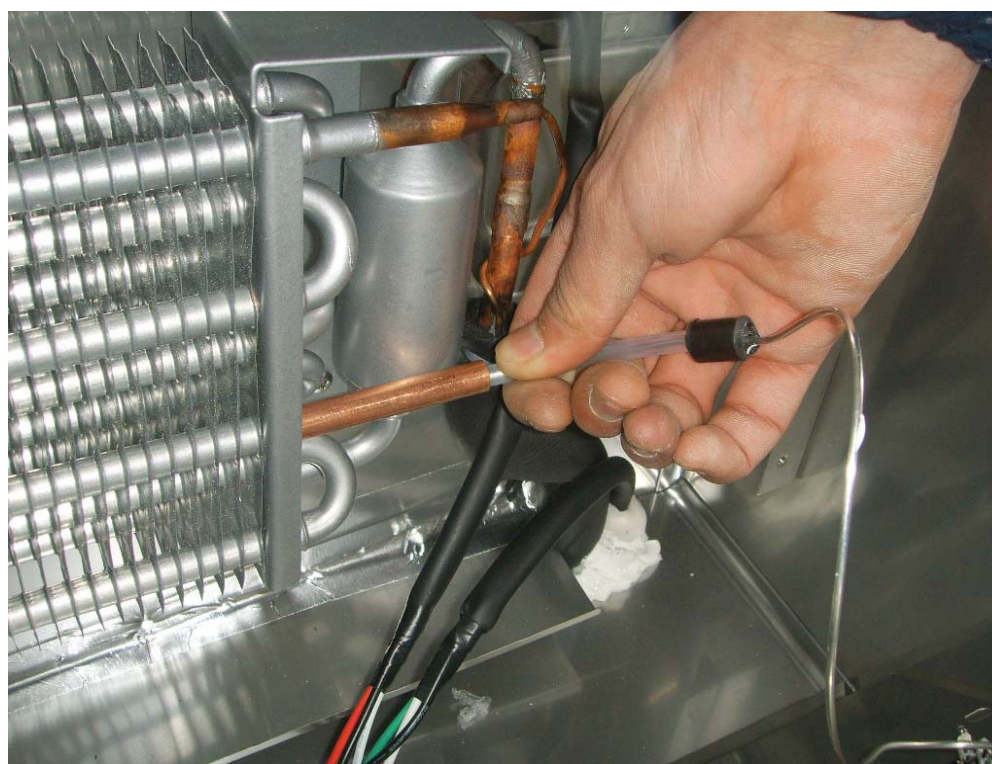
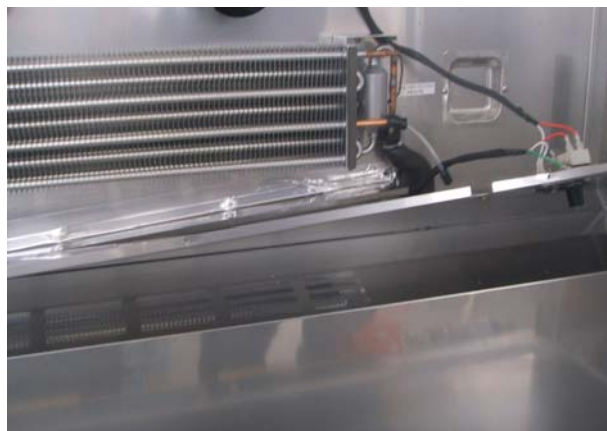
MST-36-15/MST-36
CONDENSING UNIT ASSEMBLY

3-2. DOOR



DOOR GASKET

3-3. REFRIGERATION COMPARTMENT



TEMPERATURE CONTROL & EVAPORATOR



EVAPORATOR FAN MOTOR



THERMOSTAT

4. MAIN COMPONENTS

1. COMPRESSOR

MODEL	PART NAME	PART NO.	HORSE	CAPACITY	TYPE OF	INPUT
MST-36-15	HBL-27YE-1	M369700100	1/4HP	~	CSR	110-115V 60HZ
MST-36	HBL-27YE-1	M369700100	1/4HP	~	CSR	110-115V 60HZ

2. CONDENSER FAN MOTOR

MODEL	PART NAME	PART NO.	POLE	INPUT	TYPE	BLADE
MST-36-15	IS 4420DWSG-1		4P	115V 60HZ	SHADED POLE INDUCTION	AL 3
MST-36	IS 4420DWSG-1					

3. EVAPORATOR FAN MOTOR

MODEL	PART NAME	PART NO.	POLE	INPUT	TYPE	BLADE
						(NUMBER)
MST-36-15	IS-27213QTBA		2P	115V/60HZ	SHADED POLE INDUCTION	PA-66 4
MST-36	IS-27213QTBA		2P	115V/60HZ		

4. FILTER DRYER

MODEL	PART NAME	PART NO.	REFRIFERANT	SPEC	NOTE
MST-36-15		BR84100101	R-134a	C-052-5	
MST-36					

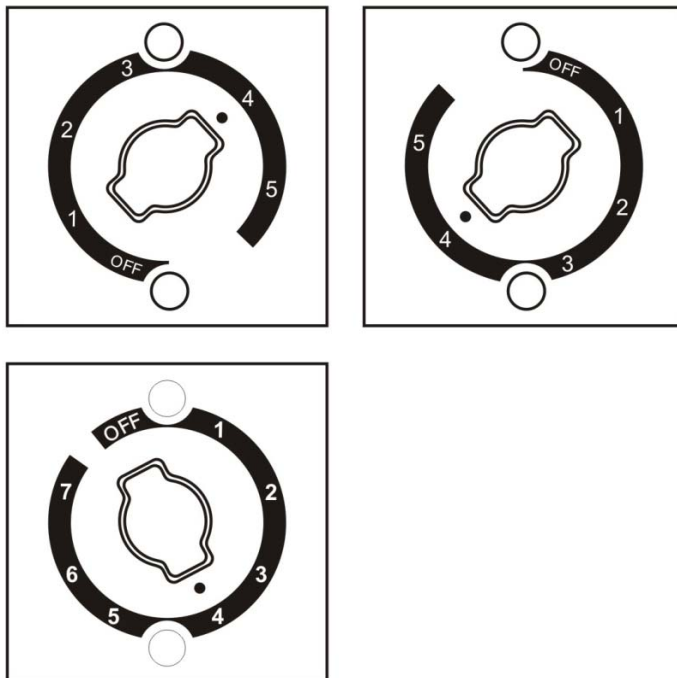
5. SWITCH

PART NAME			PART NO.	RATING	MAKER
PART NAME			PART NO.	K55Q-5607,16A	RANCO
THERMOSTAT			30283L0100	MST-36-15,MST-36	RANCO
				MST-36-15,MST-36	

5. TEMPERATURE CONTROL INSTRUCTION

5-1. HOW TO USE THE TEMPERATURE CONTROL

1. The controller (thermostat) is located at the inside top of the unit.
2. The factory setting for the control is “4”.
3. Move setting “1” for higher temperature and “5 (7 for freezer series)” for lower temperature.
4. The thermostat controls the compressor’s on/off by sensing the inside temperature.



- If thermostat knob is pointing at OFF, compressor and condenser fan motor will not run.
- Keep unit unplugged, if it will not in use for a long period of time.

5-2. FUNCTION TABLE

No	Function	Controlled	Description			
1	Temperature Control	Compressor Evap.Fan motor Cond.Fan Motor	1. The temperature can be changed by turning the dial knob 2. Compressor is automatically turned on and off by thermostat. ■ Cut in and out temperature chart. °F			
	Model: MST-36-15 MST-36 (k55Q-5607)		<i>NO.</i>	<i>Cool</i>	<i>Normal</i>	<i>Cold</i>
			<i>Cut in</i>	<i>40.1±1.5</i>	<i>40.1±1.5</i>	<i>40.1±1.5</i>
			<i>Cut Out</i>	<i>24.8</i>	<i>21.2</i>	<i>17.6</i>

6. REPLACEMENT OF MAIN COMPONENTS

6-1. REPLACING DOOR

A. Unscrew the top hinge



B. Lift the door



6-2. REFRIGERATION COMPARTMENT PARTS

A. Disassemble the evaporator fan duct assembly



B. Disassemble the evaporator fan motor



REPLACEMENT OF MAIN COMPONENTS

C. Disassemble the pan duct middle



D. Disassemble the evaporator duct



E. Remove the thermostat & sensor



F. Remove the evaporator coil

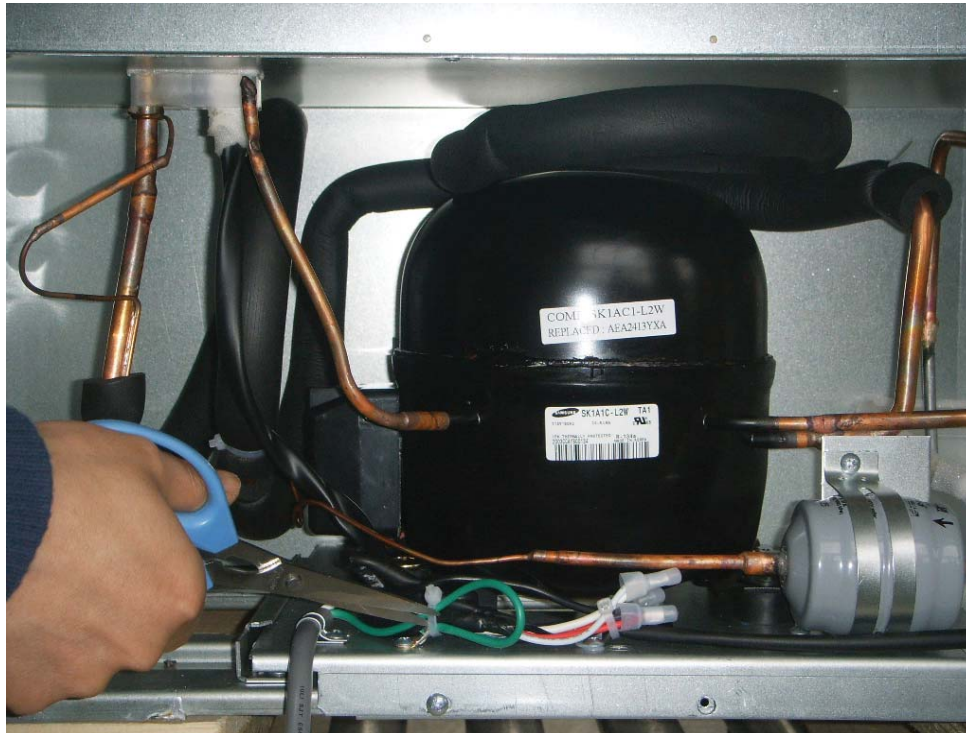


6-3. COMPRESSOR COMPARTMENT PARTS

A. Disassemble the rear grille



B. Disassemble the cable tie



C. Disassemble the condensing unit



Unscrew two screws as above



Pull out the condensing unit

D. Disassemble the condenser fan motor



6-4. REPLACING THE EVAPORATOR & EVAPORATOR FAN MOTOR

A. Remove the pan



B. Remove the pan support frame



REPLACEMENT OF MAIN COMPONENTS

C. Unscrew the screws located on both sides and the top of the evaporator duct assemble fixture.



D. Unscrew the screws located on top and bottom of the pan duct middle.



REPLACEMENT OF MAIN COMPONENTS

E. Take out the pan duct middle through the upper hole.



F. Unscrew the screws located on left and right side of the evaporator duct.



G. Then you can replace fan motor, evaporator coil and thermo sensor.



7. PARTS LIST FOR M36/S36

Part name	Part code	Description	Model		Remark
			MST-36-15	MST-36	
COUNTER TOP					
COUNTER TOP ASSEMBLY	M369500100		1		
COUNTER TOP ASSEMBLY	S369500100			1	
CASTER	G8F6500101	4INCH MOVING	2	2	SAME AS SD SERIES
CASTER	G8F6500201	4INCH MOVING STOPPING	2	2	SAME AS SD SERIES
DOOR					
TOP HINGE (R)	M722900109	SUS304,SM45C	1	1	SAME AS SD SERIES
TOP HINGE (L)	M722900209	SUS304,SM45C	1	1	SAME AS SD SERIES
DOOR BUSHING	M729200100	PA-66	2	2	SAME AS SD SERIES
DOOR BUSHING	M720700107	PA-66	2	2	SAME AS SD SERIES
BOTTOM HINGE (U)(R)	30229M0405	SUS304,SM45C	1	1	SAME AS SD SERIES
BOTTOM HINGE (U)(L)	30229M0305	SUS304,SM45C	1	1	SAME AS SD SERIES
DOOR GASKET	M362300106	PVC	2	2	SAME AS SD SERIES
DOOR Assembly (L)	WM36700201	SUS430-#4	1	1	
DOOR Assembly (R)	WM36700101	SUS430-#4	1	1	
COMPRESSOR COMPARTMENT					
COMPRESSOR	M369700100	HBL-27YE-1 (1/4HP)	1	1	SAME AS SD SERIES
SUCTION PIPE (A)	M364400300	C1220T	1	1	SAME AS SD SERIES
SUCTION PIPE (B)	U354200102	C1220T	1	1	SAME AS SD SERIES
DRAIN PAN	30211A0202	PP	1	1	SAME AS SD SERIES
DRAIN PIPE	M364400101	C1220T	1	1	SAME AS SD SERIES
CONDENSER FAN MOTOR	G8F6600100	IS 4420DWSG-1	1	1	SAME AS SD SERIES
POWER CORD	M721300101		1	1	SAME AS SD SERIES
CONDENSER FAN BLADE	K3F5000100	AL Φ200	1	1	SAME AS SD SERIES
REFRIGERATION COMPARTMENT					
PAN	M729900300	PC	15	10	SAME AS SD SERIES
PAN SUPPORT ASS'Y	M365300100	SUS304-2B	1		
PAN SUPPORT ASS'Y	S365300100	SUS304-2B		1	
KITCHEN BOARD	M369400103	MIPS	1	1	

PARTS LIST

Part name	Part code	Description	Model		Remark
			MST-36-15	MST-36	
LOUVER	M275800110	SUS439-2B	1	1	SAME AS SD SERIES
SHELF	WM35800100	PE	2	2	
FIXTURE SHELF CLIP	30220L0900	PA-66	8	8	SAME AS SD SERIES
SHELF MID BRACKET	M720600100	SUS304-2B	1	1	SAME AS SD SERIES
SHELF STANDARD	M725300200	SUS304	8	8	SAME AS SD SERIES
EVAPORATOR AS	M367000100	CU,SPG,AL	1	1	SAME AS SD SERIES
THERMOSTAT	30283L0100	250V,16A K55Q -5607	1	1	SAME AS SD SERIES
EVAP FAN MOTOR		IS-27213QTBA	2	2	SAME AS SD SERIES
HOOD Assembly	M360001100		1		SAME AS SD SERIES
HOOD Assembly	S365601100			1	SAME AS SD SERIES
MULLION FRAME	M722200400	PVC	1	1	SAME AS SD SERIES
MULLION BACK FRAME	M722200200	STS304-2B	1	1	SAME AS SD SERIES
MULLION FRAME INSULATION	M723300100	F-PS	1	1	SAME AS SD SERIES
CONDENSER AS	KF24900105	CU,SPG,AL	1	1	SAME AS SD SERIES
HOOD SHAFT SPACER	M725000400	SUS304	2	2	SAME AS SD SERIES
HOOD HINGE	M724900100	SUS304	2	2	SAME AS SD SERIES
BRACKET BOARD KITCHEN(R)	30206P1902	SUS304	1	1	SAME AS SD SERIES
BRACKET BOARD KITCHEN(L)	M720601301	SUS304	1	1	SAME AS SD SERIES
PAN GUIDE	M722500100	SUS304-#4	4		SAME AS SD SERIES
PAN GUIDE	S272500300	SUS304-#4		4	SAME AS SD SERIES
BRACKET MOTOR	30220T0307	SUS304-2B	2	2	SAME AS SD SERIES
FAN COOLING BLADE	3011802212		2	2	SAME AS SD SERIES