

Service manual



MOCCA

Your retail dealer

S_EN

Rev. 090828

| | | | |
|-----|--|-------|---------|
| 1. | Table of contents | page. | 2 |
| 2. | General | | 3 |
| 3. | Overview of the components, front. | | 4 |
| 3. | Overview of the components, mixer system. | | 5 |
| 4. | Installation and start | | 6-7 |
| 5. | Operation; | | |
| | Brewing of coffee in cup Hot Water | | 8 |
| | Brewing of jug | | 9 |
| 6. | Cleaning program | | |
| 6. | Automatic cleaning of In/Outlet valves | | 10 |
| 6. | Rotate brew mechanism without water or ingredients | | 11 |
| 6. | Automatic cleaning of brew mechanism, mixing bowl | | 12 |
| 6. | Cleaning of brew house | | 13 |
| 7. | Cleaning and maintenance | | |
| | Outward cleaning when needed | | 14 |
| | Cleaning and dismantling of coffee filter | | 15 |
| 8. | Cup counter and Easy access | | 16 |
| 9. | Safety functions | | 17 |
| 10. | Failure messages | | 17 |
| 11. | Storage and transportation | | 17 |
| 12. | Installation of coin mechanism | | 18 |
| 13. | Circuit diagram | | 19 |
| 14. | Spare part list | | 20 - 22 |
| 15. | Exploded View | | 23- 27 |

We congratulate to your choice of a Freshbrew machine.

Please read this manual before you take the machine into operation for the first time.
The manual contains important instructions for a safe and proper use of the machine.

Always keep this manual within reach for the user!

Mocca

- Making freshly coffee cup by cup
- Brewing mechanism with coffee filter
- Electronically temperature controlled
- Adjustable coffee strength

Fakta:

| | |
|-------------------|-------------------|
| Height | 675mm |
| Width | 270mm |
| Depth | 530mm |
| Weight | 15 kg |
| Tank volume | 2.0 litre |
| Electricity: | 230V/2200W |
| Water connection: | ½" outside thread |

| | |
|------------------------|---------------|
| Capacity: | |
| Approx. cups of coffee | 100 / filling |

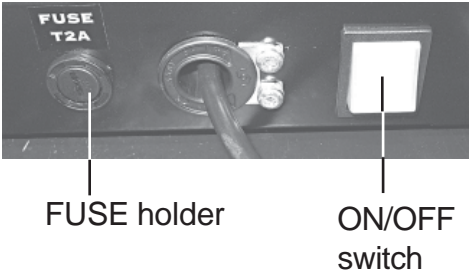
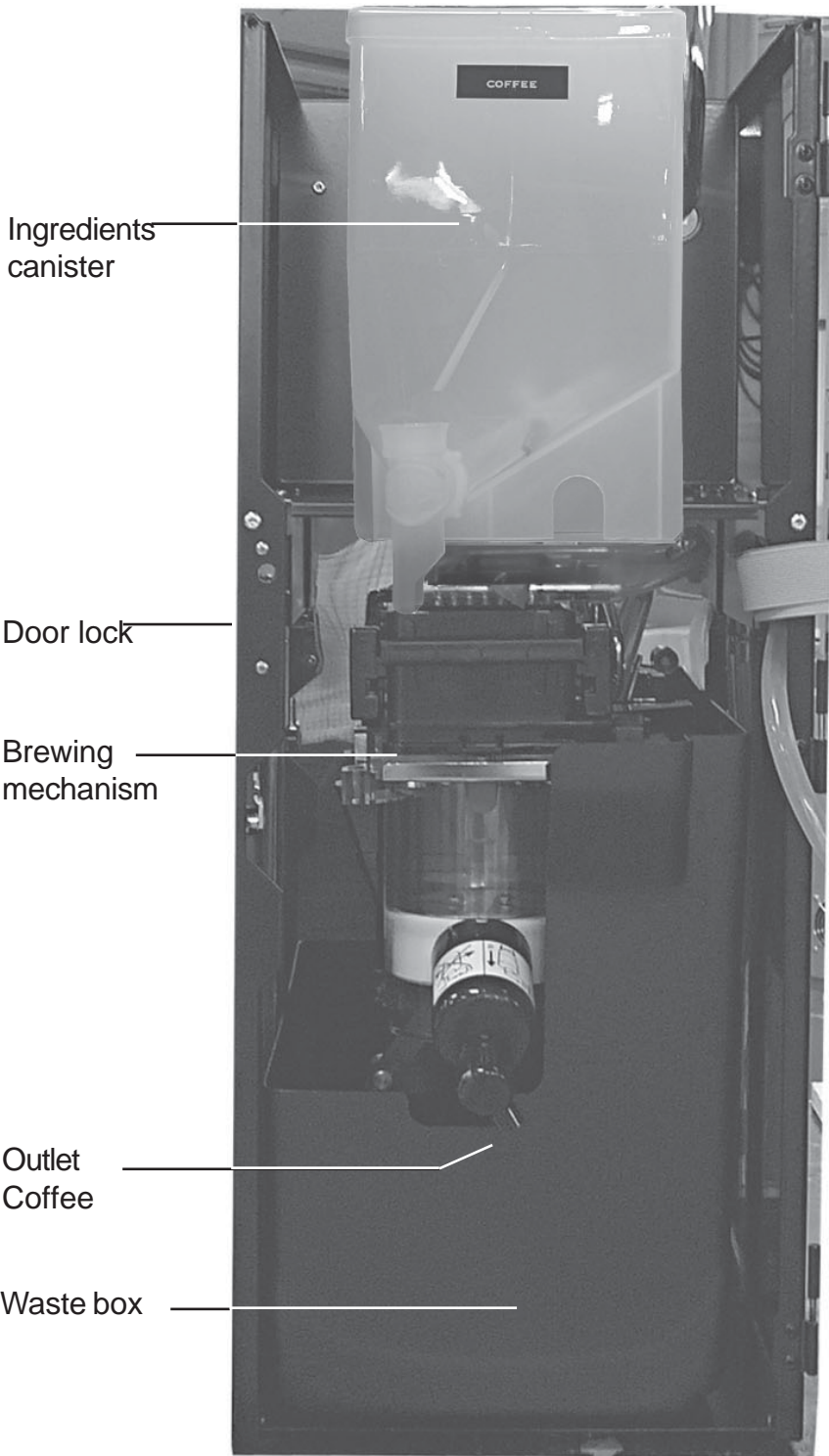
Display _____
Strength of drinks ++ / -- _____
Key switch _____
Large coffee _____
Small coffee _____
Hot water _____
Door lock _____

**Outlet
(warm drinks)** _____
Cupholder _____
Drip tray insert _____
Drip tray _____



Options:

Base cabinet
 with waste box



Outlet hot water

| Detail; | Ingredients; | Width; | Height; | Amount/unit |
|-----------|--------------|--------|---------|-------------|
| Canister; | Coffee | 160 | 250 | 1 |

1. Place the brewer on a flat level and waterproof surface.



Connect the electrical plug to a separate grounded wall socket



90°

OBSERVE!

Make sure there is a space behind the machine for free flow of air. (minimum 10cm).

2. Connect attached water tube to cold water with an R 1/2".
Make sure that the water hose not are kinked anywhere when machine is pushed into place.
Please flush the water tube before connecting to machine, this to avoid any particles to damage the inlet valve.

3. Open the water inlet.
4. Turn on the ON-OFF switch

Water is been filled into the tank automatically with 2,0 litres of water. The heating will not start before the water level reaches the level sensor.

Set temperature is approx 97°C.



Fuse holder

ON/OFF switch

5. Close door.

6. Fill canisters with ingredients.

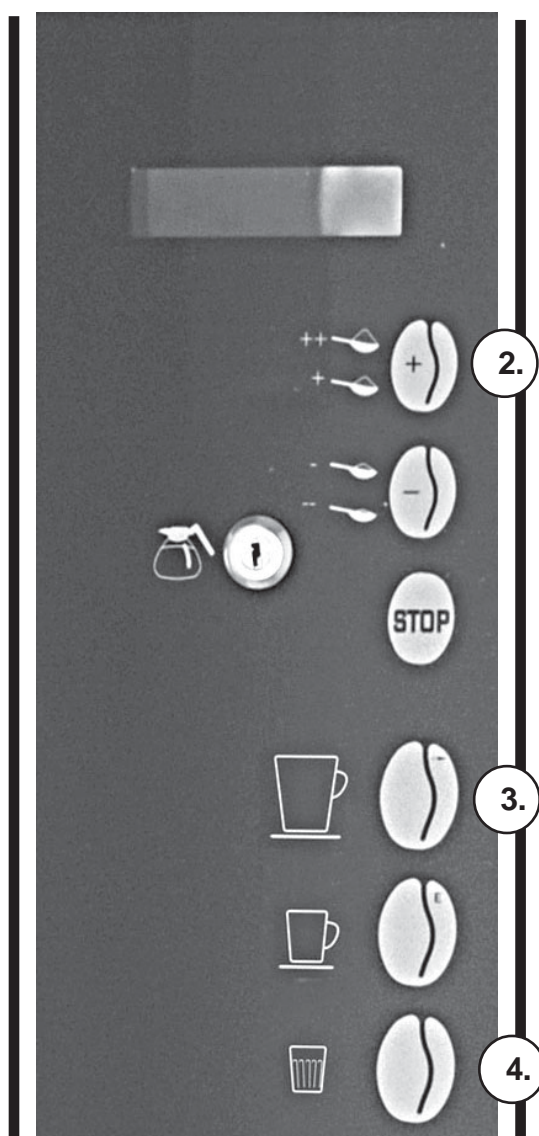
Take out (this to avoid unnecessary spillage in the machine) ingredient canisters and fill them with ingredients.

**7. When placing the ingredient canister**

Make sure that the outlet pipe have the position of pointing straight into the brew mechanism. See (A).

When the water is heated up to right temperature the message "**Low temp**" will disappear and machine **is ready to use**.

"Low temp."



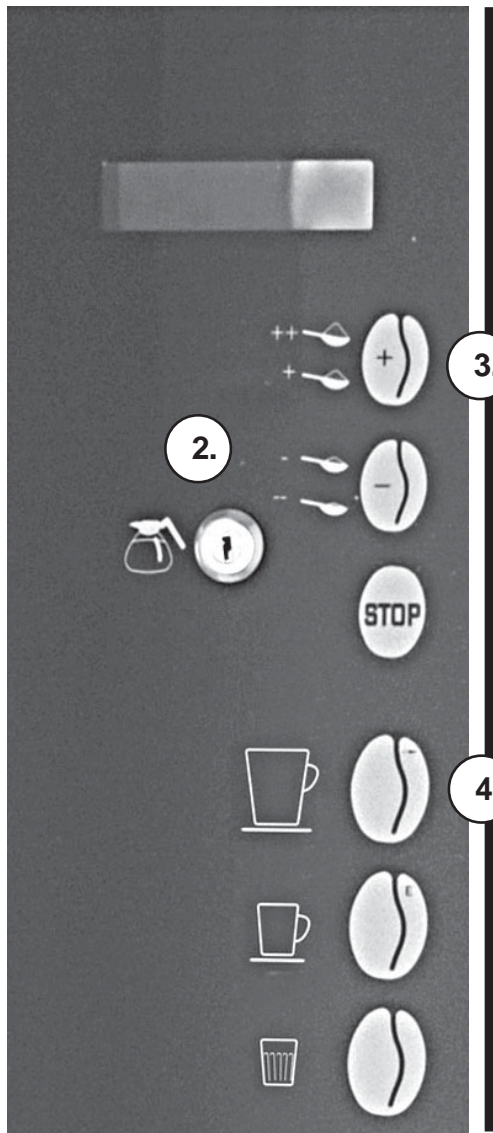
1. Place a cup in the centre of the cup holder.
2. **The strength has a standard setting,** if you wish to increase or decrease it, do as follows if not continue to point 3.

Stronger drink;
Increase by pushing + or ++ for 5% or 10%
alternative
Weaker drink;
Decrease by pushing - or -- for 5% or 10%
(the indication lamp will go up or down depending of choice).

3. Choose drink by pushing on the button to the right of each menu. The display will show; "Please wait", and the cup will be illuminated.

Wait until the light on cup and the message "Please wait" has been turned off before you take your cup.

4. **Hot water.**



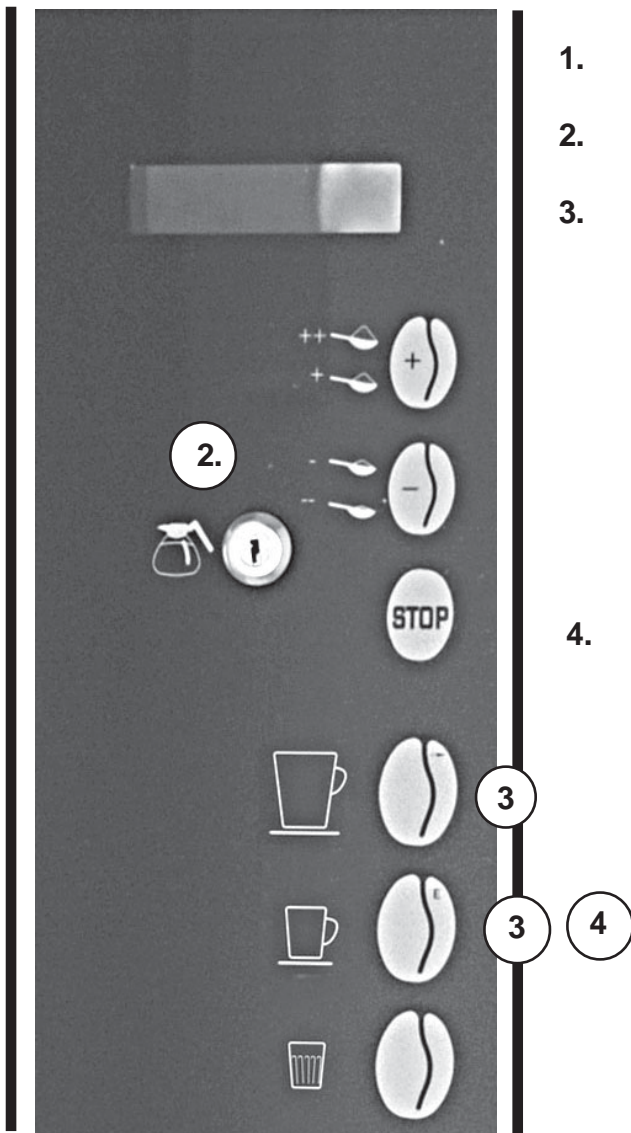
Brewing of jug.

1. Place a jug in the centre of drip tray by lifting up the cupholder.
2. Turn on the key with jug symbol clockwise.
3. 3 cups of brewing is standard setting. Change amount of cups by pushing + or - button. Optional up to 12 cups or down to 1 cup brewing.
4. Push the button for drink 1.

Wait until the light and message "Please wait" has been turned off before you take out the jug.

Automatic cleaning of In/Outlet valves:

The In/Outlet valves can easily be cleaned with the key switch in "cup" (normal) position.



1. Place a jug in the drip tray.
2. Turn the key slowly ninety degrees and back again.
3. Push button for drink 1 and 2 at the same time for 6 seconds.

Keep buttons down.

All In/Outlet valves will now start to open and close with 2 pulses/second in 10 seconds or as long as you hold the buttons.

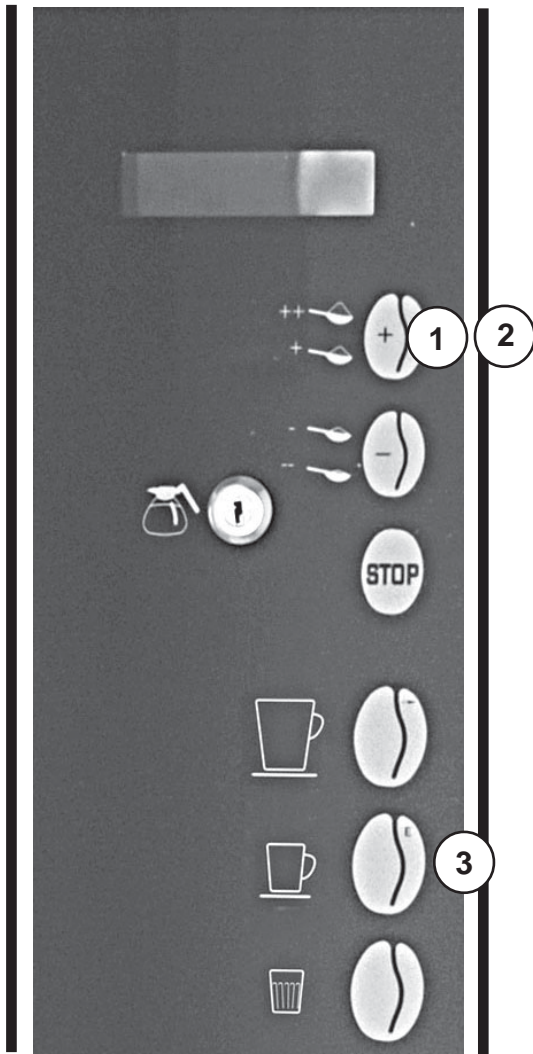
The display shows: "Cleaning valves".

4. Push button for drink 2 for making a brew cycle and flush remaining water and scale from the cleaning.

By cleaning is meant that valves "knocks" away eventual scale and other particles which has been attached in the cylinders and that they are flushed away with the water.

Rotate brew mechanism without water or ingredients:

The brew mechanism can be rotated without water and ingredients with the key switch in "cup" (normal) position. To be used when brew mechanism has been dismounted for washing and shall be remounted.



1. Push "+" button for 6 seconds

After 4 seconds the signal will go faster.

The display shows: "Change paper/Rotate"
"Push E/ +"

2. Push + button.

The display shows: "Rotate cycle without water".

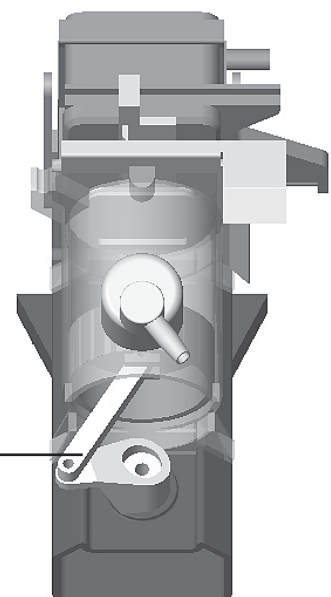
3. Push button for drink 2.

The display shows: "Rotate"

The brew mechanism rotate one turn without water and ingredients and the mechanism falls into position if it has been dismounted.

Observe! The push rod shall be in position "8 o clock"

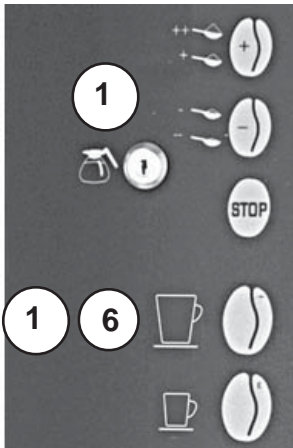
If not take out again and repeat the procedure.



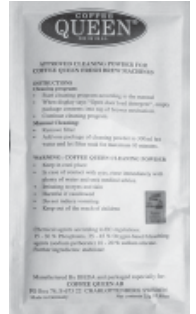
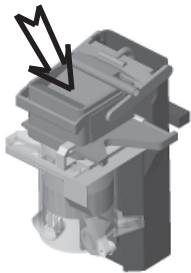
Eight (8) o clock.

Automatic cleaning of brew mechanism, mixing bowl:**Shall be done every week.**

The brew mechanism can easily be cleaned with the key switch in "cup" (normal) position.



1. Turn the key slowly ninety degrees and back again.
Push button for drink 1 for 6 seconds. **Fig. A**
2. After 4 seconds the signal will go faster.
3. After 6 seconds **The display shows;** "Open door"
"load detergent".
4. Fill 25gr detergent (one portion bag, see fig. A) into the brew mechanism. fig. B.(Detergent will be supplied from your dealer)
5. **The display shows;** "Close door"
6. **The display shows;** " When ready press key"
Place a jug into the drip tray and push button for drink 1

**Fig. B**

7. **The display shows;** "Cleaning mixer" (2....)
8. **The display shows:** "Rinsing coffee" "Soak time:"
The machine start to count down from 300 seconds.
9. **The display shows.** "Brewer cycle" the machine is counting down.

To stop cleaning process: push "Stop" button.

The brew mechanism will go back to start position.

NOTE! Dont stop the process when detergent has been loaded the cleaning process must be finished.

IMPORTANT! Cleaning of brew house.

After the automatic cleaning program is finished. Clean brew house! This must be done, to make sure that you will remove residual detergents and coffee remains!

Dismantling and cleaning/washing brew house: Do as follow in paragraph 10- 19.

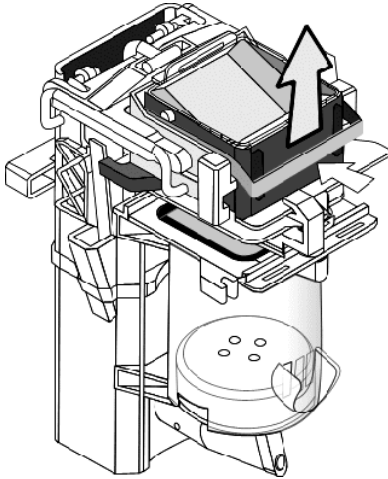


10. **Push "+" button for 6 seconds**
11. The display shows: "Change paper/Rotate" "Push E/ +"
12. Push button for drink 2.
13. The display shows; "Preparing paperload".
14. The machine will rotate in position.
15. The display shows,"Change paper"
16. **Open door, dismantle**, clean and reassemble brew house.
see page 20.
17. Close door.
18. Machine is ready to use again.
19. Take out a cup of coffee and pour it out to make sure that there is nothing left of detergent.

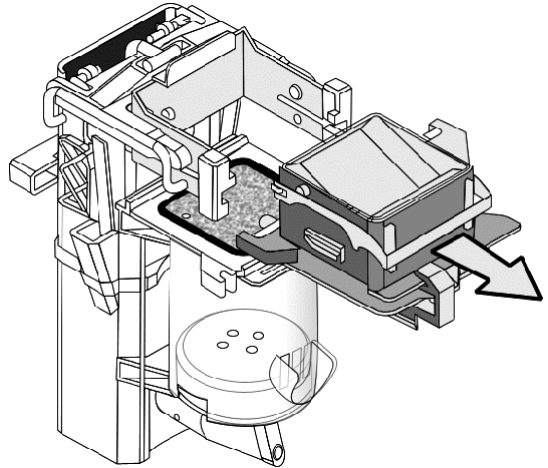
If machine not will go back in start position. Restart machine.

Dismantling and cleaning brew house:**Dismantle brew house:**

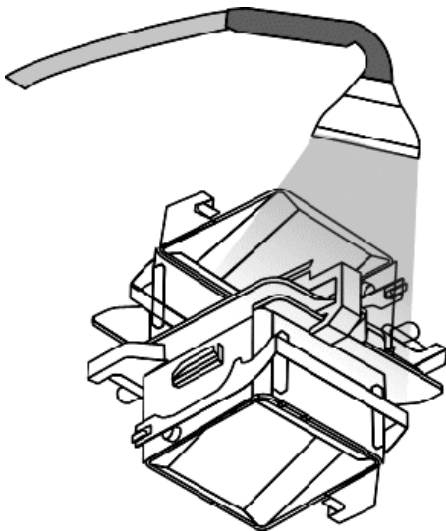
1.



2.

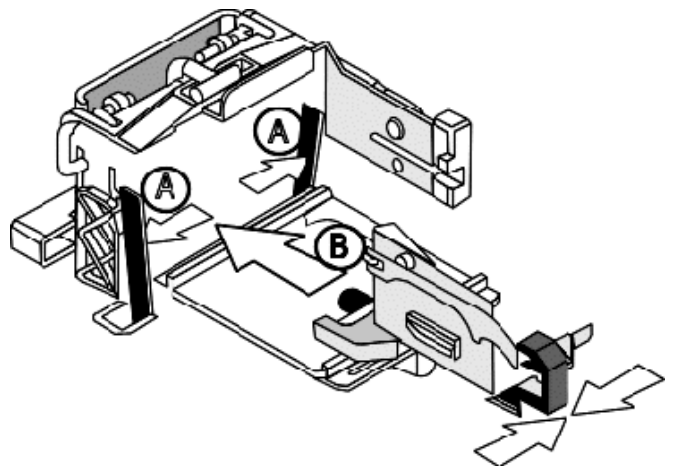
**3. Flush brew house!**

To remove detergent and coffee remnants.

**Reassemble brew house.**

NOTE! When reassemble brew house make sure that (B) wiper are between (A) arms.

4.

**Important! wash carefully**

To remove cleaning
and coffee remains

Cleaning when needed.

Outside cleaning; use a soft rag and liquid cleaning agent to prevent scratches.

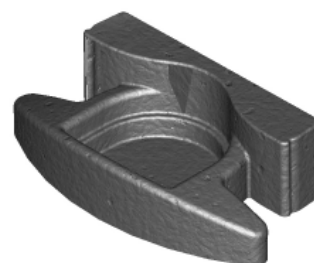


Note! Make sure that all parts are dry before use.

Cleaning of parts.

Drip tray and its insert to be washed by hand in ordinary dishwater.

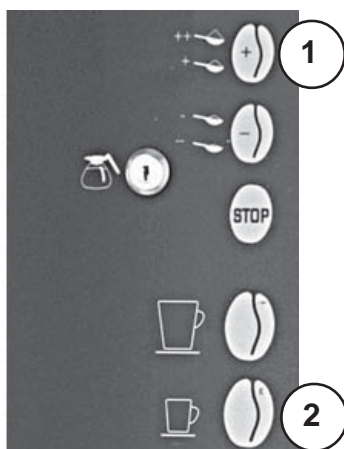
CAUTION! Must not be washed in a dish washing machine!



Ingredient canister and chute can be washed in dish washing machine

Dismantling and cleaning coffee filter.

A tool dismantling the coffee filter, comes with machine.



1. Push **" + button "** for 6 seconds.
After 6 seconds the display shows; "Change paper/ Rotate"
"Push E/+".

2. **Push button for drink 2.**

The display shows; "Preparing paperload".

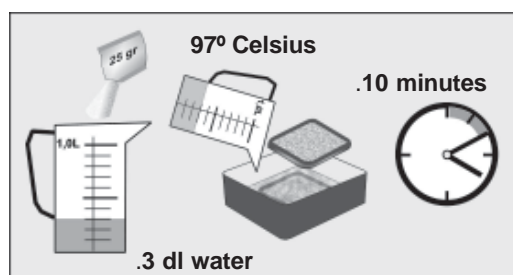
The machine will rotate in position.

When the display shows, "Change paper" open the door and insert the dismantling tool (A) through the brewer spout all the way to the back of the cylinder, then slide it up until contact is made with the screen assembly. Fig. 1.

Push up on the rear of the screen assembly until it pops out of the cylinder. Fig. 2.

3. Soak the screen assembly in a solution of 25gr. cleaning agent in 3dl water for a maximum of 10 minutes. Fig. 3.

Fig. 3.



(Cleaning agent is supplied by your retail dealer)

3

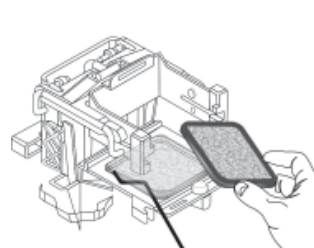
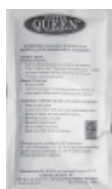


Fig. 2.

(A)

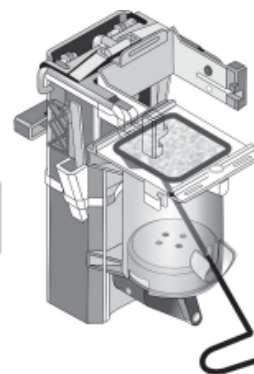


Fig. 1.

4. Remount the screen assembly and close the door. Then the machine will return to start position and the machine is ready for use.
If machine not will go back in start position. Restart machine!
5. Make a cup of coffee and throw it out.
To make sure that there is nothing left of detergent.

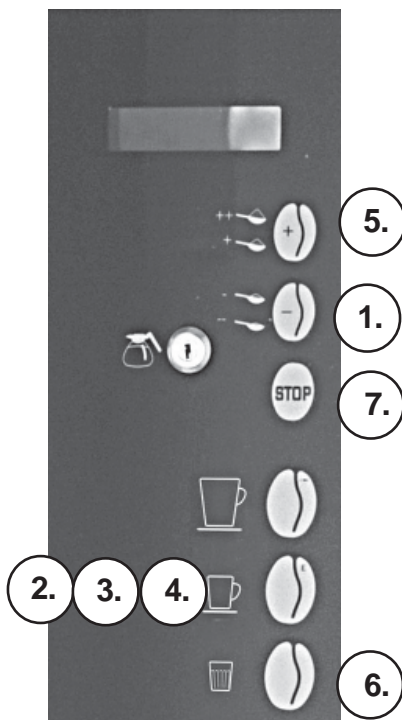
Prolonged contact with cleaning agent may damage the screen assembly. Once this is done, the screen should then be thoroughly rinsed with dish soap and warm water to remove any leftover residue.

Cleaning agent: (brew mechanism)
Filter: (brew mechanism)
Tool: (dismantling filter)

article no 1104161
article no 47200213
article no 4720090

Cup counter:

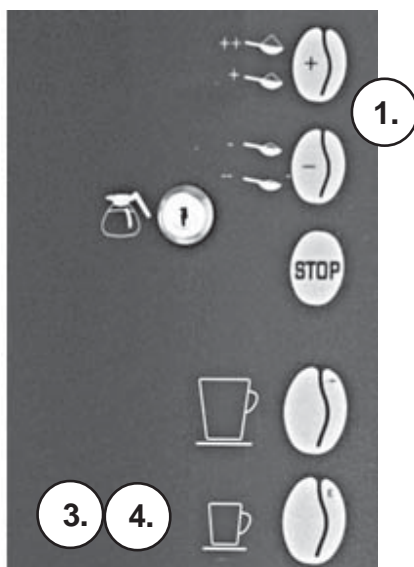
The machine has a cup counter which is available to see and reset with the key switch in "cup" (normal) position.



1. **Push "-" button for 6 seconds.**
After 4 seconds the signal will go faster..
The display shows: **"Total xxx cups"**
2. Push button for drink 2.
The display shows: **"Choice 1 free xxx cups"**
3. Push button for drink 2.
The display shows **"Choice 1 coin xxx cups"**
4. Push button for drink 2.
The display shows **"Choice 1 xxx cups in can"**
5. Push "+" button to reach to "choice 2" etc.
6. Push choice 3 to reset the counter.
7. Push "Stop" button to go back to user mode.

Easy Access:

Volume and strength can be adjusted with $\pm 15\%$ with the key switch in "cup" (normal) position.



1. **Push "+" and "-" button at the same time.**
After 4 seconds the signal will go faster.
The display shows: **"Easy access" "strength 1 100%"**
2. Choose the drink you want to change by pushing "+" or "-" button.
3. Push button for drink 2.
The display shows: for example. Volume 4 and"
Blinking 100%"
Change by pushing "+" or "-" button.
4. Push button for drink 2 to confirm the change.
Press "stop" to go back to user mode.

The machine is equipped with following safety functions

1. Indication of door
Door not closed
The display shows; "Door open"
2. When machine is not in use:
Valves are blocked.

"Door open"

10. Failure messages.

Failure messages which can mostly be corrected without any help from service company

1. The display shows; "Blocked" "Water level low"
Please check incoming water connection
Turn off the machine with the main switch
wait for 10 sec. and turn on again.
2. The display shows normal: but no drink is coming.
Possible cause of failure:
Mechanical stop in the ingredients canisters.

"Blocked"

Measure: Try to find the cause of failure. Clean the mixer system and try again.

11. Storage / Transport.

Transport and no use in long time.

1. Turn off the switch, pull out the plug and close incoming water tube.
2. Empty the water tank.
3. Keep machine free from frost.

Long machine storage at temperatures below 0°C (zero degrees celsius) can cause damage of the machine. Total emptying of water is recommended.

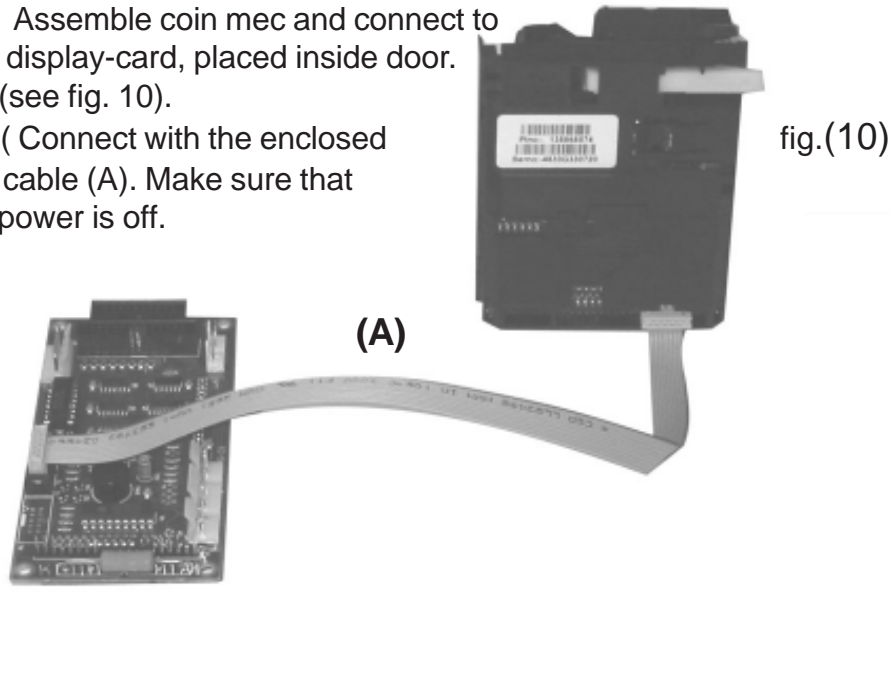
12. Installation of coin mechanism.

Installation of coin mechanism for freshbrew machines CQ.

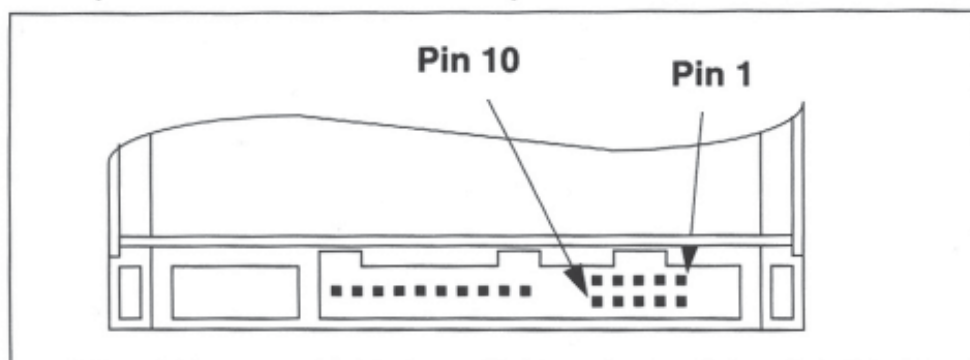
IMPORTANT: Installation must be done by an authorized technician.

1. Assemble coin mechanism and connect to display-card, placed inside door.
(see fig. 10).

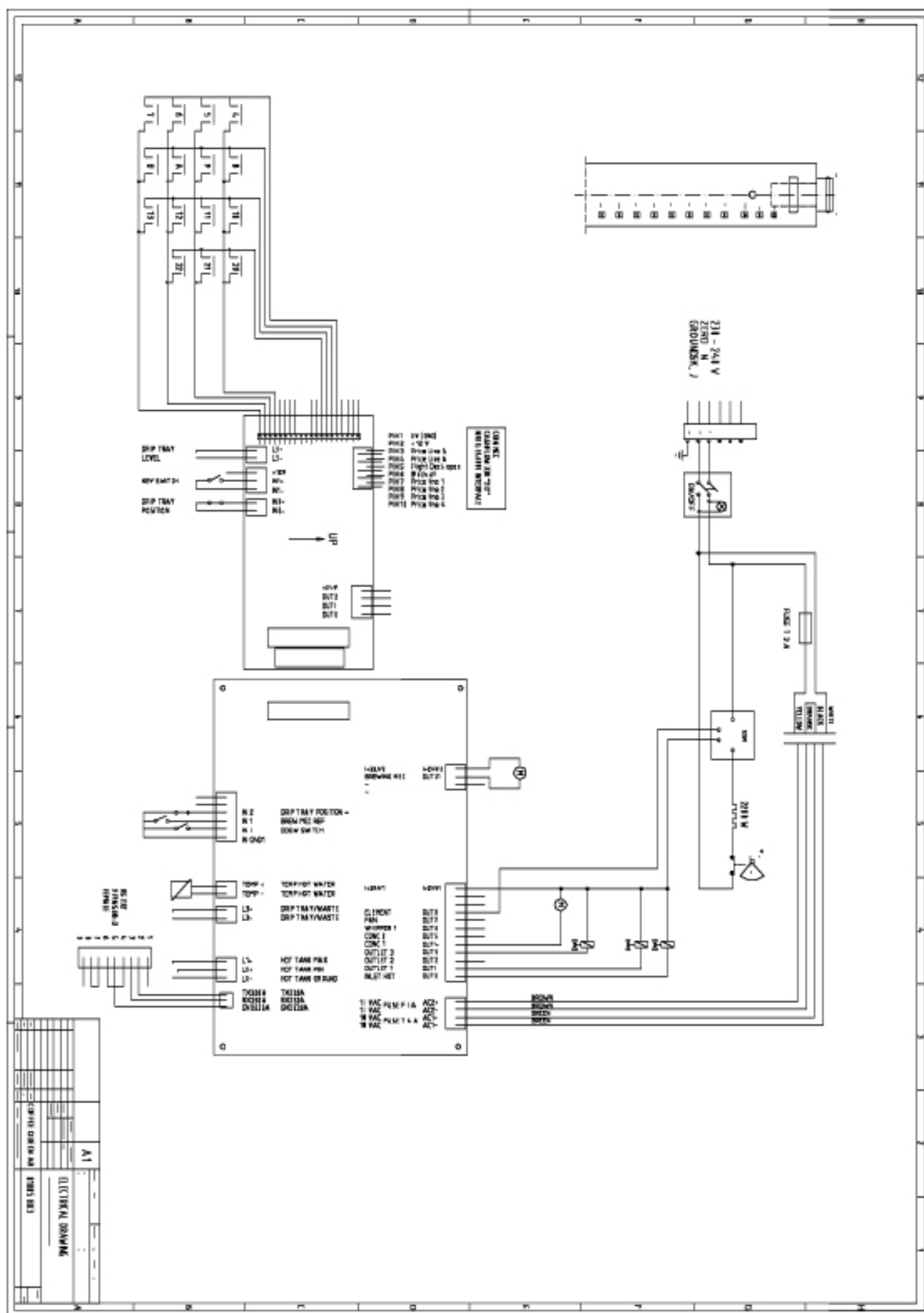
(Connect with the enclosed cable (A). Make sure that power is off.



Connection



Connection placement; Version 212



14. Spare parts list.**MOCCA**

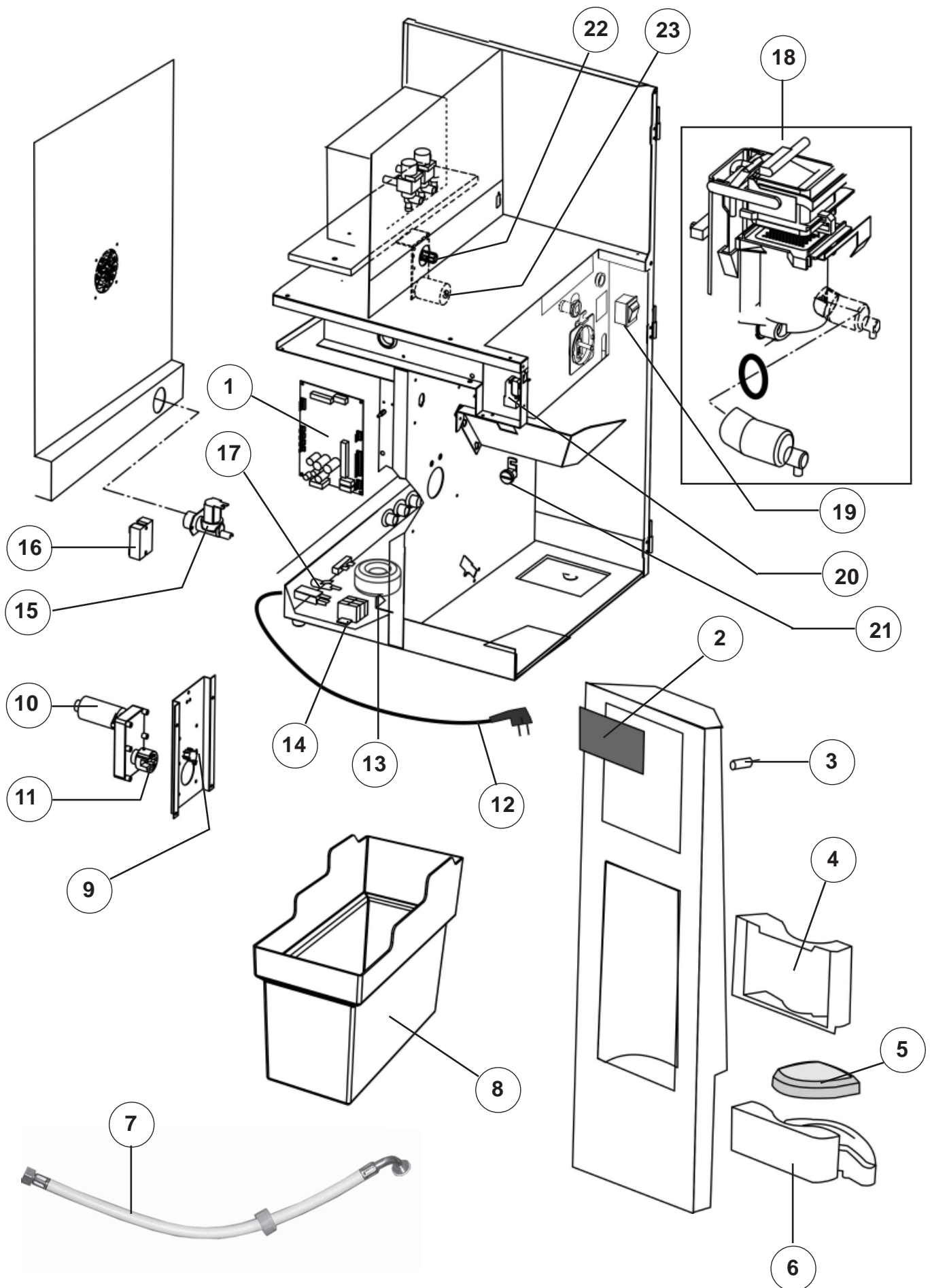
| Description; | Article no; | Detail no; | Amount/ unit; |
|-------------------------------------|--------------------|-------------------|----------------------|
| Electronic card | 1604102 | 1 | 1 |
| Displaycard | 1604101 | 2 | 1 |
| Spacer for displaycard | 1203416 | - | 4 |
| Key switch | 1202551 | 3 | 1 |
| Key | 1202553 | 3 | 1 |
| Drip tray, extension | 1105334 | 4 | 1 |
| Drip tray insert | 1105333 | 5 | 1 |
| Drip tray | 1105332 | 6 | 1 |
| Inlet hose 3/4"X1/2" White | 150541 | 7 | 1 |
| Waste box | 1105331 | 8 | 1 |
| Microswitch, brew engine | 160829 | 9 | 1 |
| Brew engine unit compl. | 1201432 | 10 | 1 |
| Brewer dock white | 120144 | 11 | 1 |
| Pin 3,5x36 | 1201453 | - | 1 |
| Pin 2,0x36 | 1201454 | - | 1 |
| Main supply cable | 160522 | 12 | 1 |
| Transformator | 710151 | 13 | 1 |
| Connection block PA 80 | 160351 | 14 | 1 |
| Side wall (connection block) PA 80 | 160352 | - | 1 |
| Inletvalve 2,5L/min. 24V DC | 1206371 | 15 | 1 |
| Solid State | 1604201 | 16 | 1 |
| Fuse holder | 1604351 | 17 | 2 |
| Fuse 2 Amp. slow 5x20 | 1604382 | 17 | 1 |
| Decal - fuse 2 Amp. slow | 1701981 | 17 | 1 |
| Brewmechanism permanent compl. | 710075 | 18 | 1 |
| Tool for dismantling filter | 4720090 | - | 1 |
| Switch 2 pol. | 160801-04 | 19 | 1 |
| Microswitch | 160841 | 20 | 1 |
| Lock with clamp(door) | 120250 | 21 | 2 |
| Key, (door) | 120251 | 21 | 2 |
| Service key | 180290-03 | 21 | 1 |
| Feet 19X10 Svart | 1203202 | - | 4 |
| Spacer for airhose, tank | 1203151 | - | 1 |
| Non return valve | 1206123 | - | 1 |
| Motor gear 145 rpm, without axle | 1604612 | 22 | 1 |
| Motor axle for 1604612, 16mm | 1604616 | 23 | 1 |
| Level sensor compl. | 120548 | 25 | 1 |
| Sensor pin 55mm | 120550 | - | 1 |
| Sensor pim 90mm | 120551 | - | 1 |
| Gasket, level sensor | 150118-02 | 26 | 1 |
| Gasket, watertank lid | 1206591 | 27 | 1 |
| High Limit Control | 220220 | 28 | 1 |
| Element 2200W | 1601361 | 29 | 1 |
| NTC-Thermistor | 711000 | 30 | 1 |
| Seal for NTC thermistor | 1605361 | 31 | 1 |
| Seal for outlet valve | 160537-03 | 32 | 2 |
| Plug, (watertank) | 160538-03 | 33 | 2 |
| Valve outlet 24 V DC | 1206286 | 34 | 2 |
| Membrane typ 40 | 1501191 | 34 | 2 |
| Membrane typ 46 | 1501192 | 34 | 2 |
| Water tank | 710021 | 35 | 1 |
| Hose, silicon 8X12 (sales by metre) | 150501 | 36 | 1 |

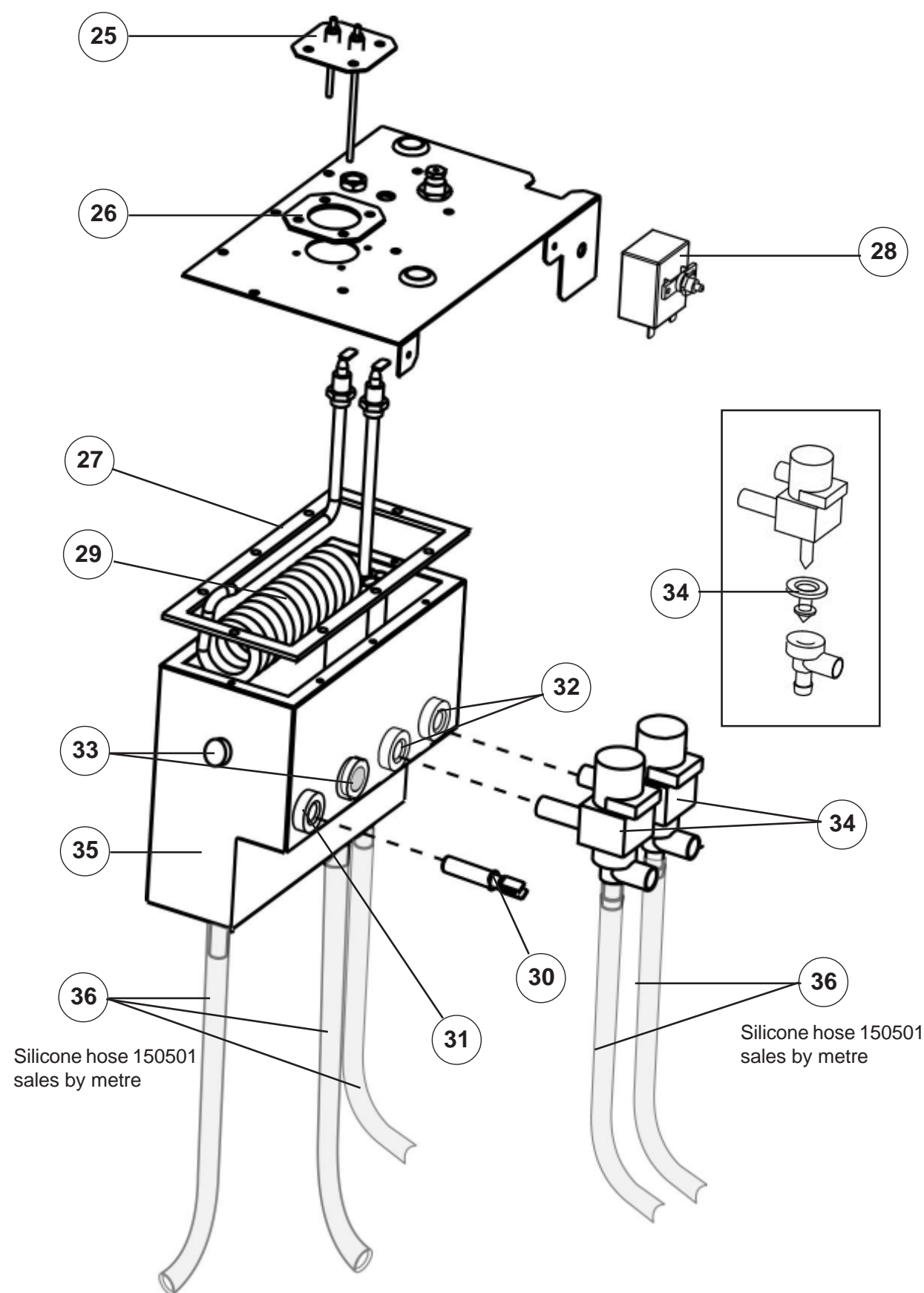
14. Spare parts list.**MOCCA**

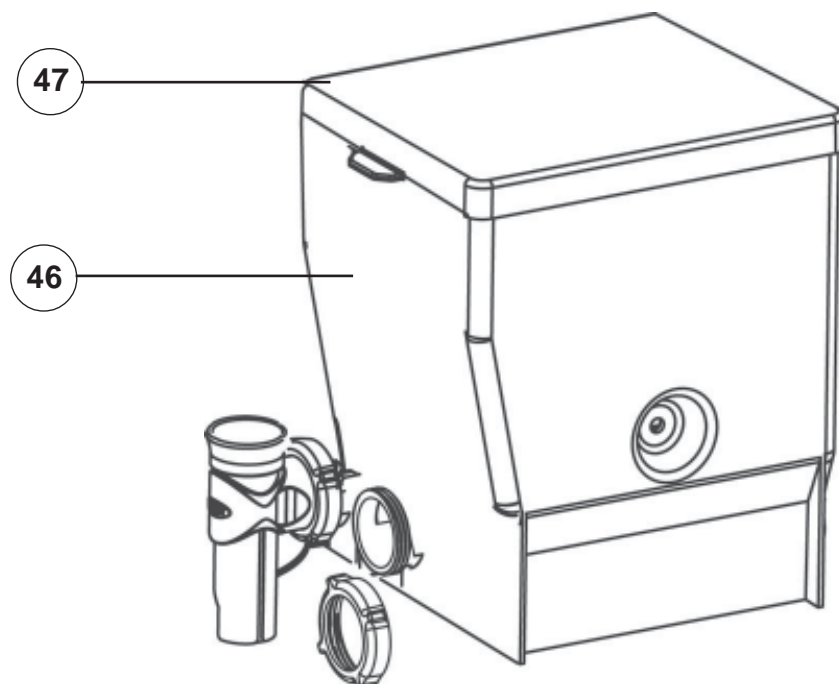
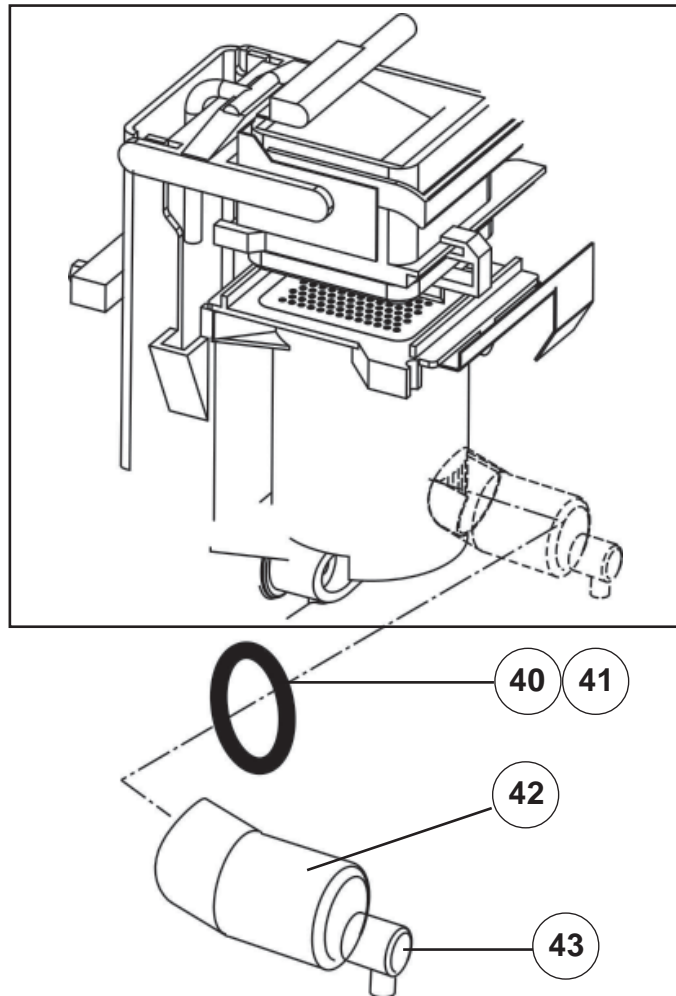
| Description; | Article no; | Detail no; | Amount/ unit; |
|-----------------------------|--------------------|-------------------|----------------------|
| O-ring 36,2X3 | 120650 | 40 | 1 |
| O-ring 15, 6X1,78 | 120652 | 41 | 1 |
| Outlet brewmech. straight | 12014641 | 42 | 1 |
| Outlet brewmechanism | 120147 | 43 | 1 |
| Ingredients canister compl. | 1205621 | 46 | 1 |
| Lid, Ingredients canister | 1205675 | 47 | 1 |

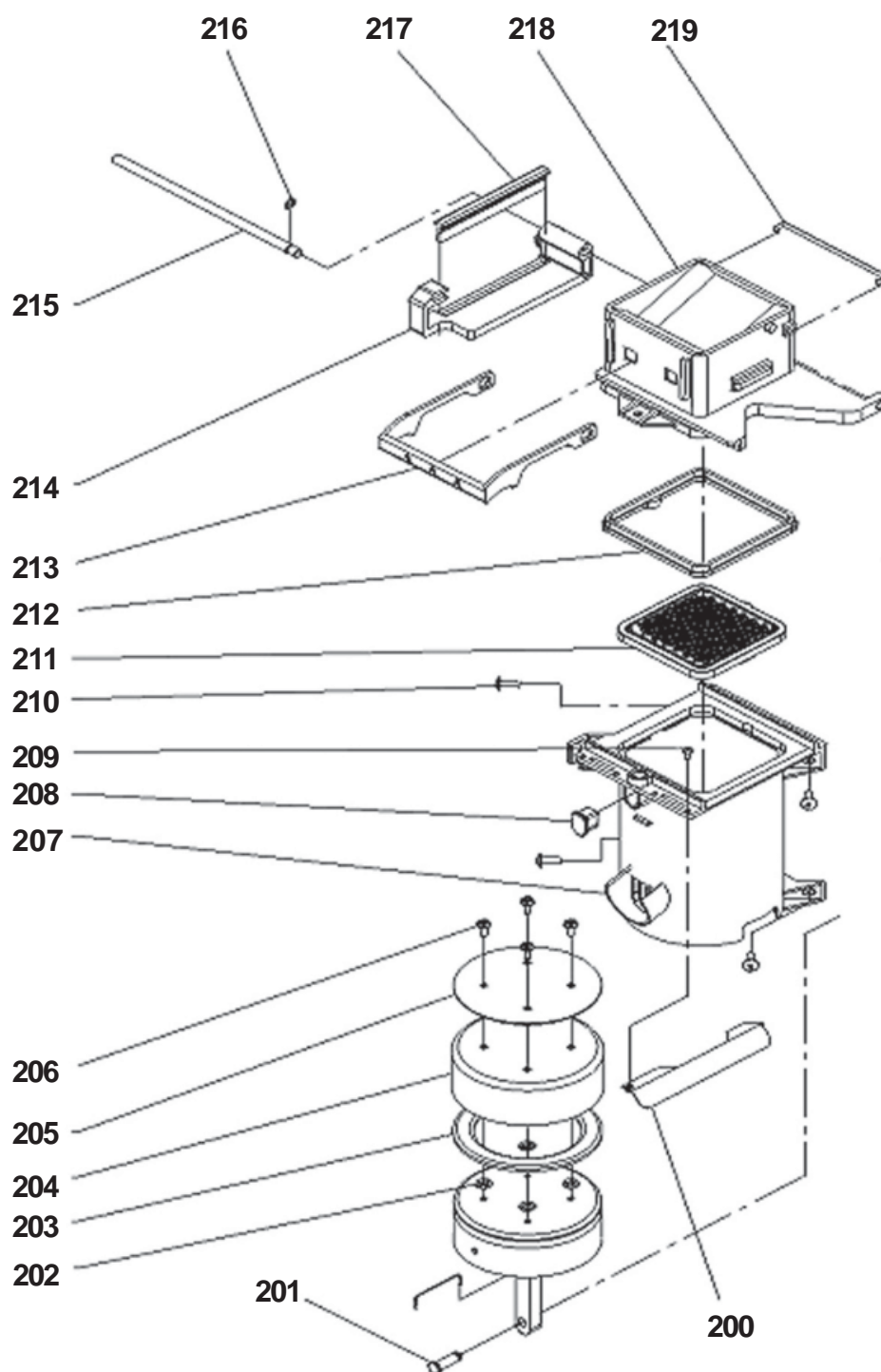
14. Spare parts lists. Brew mechanism

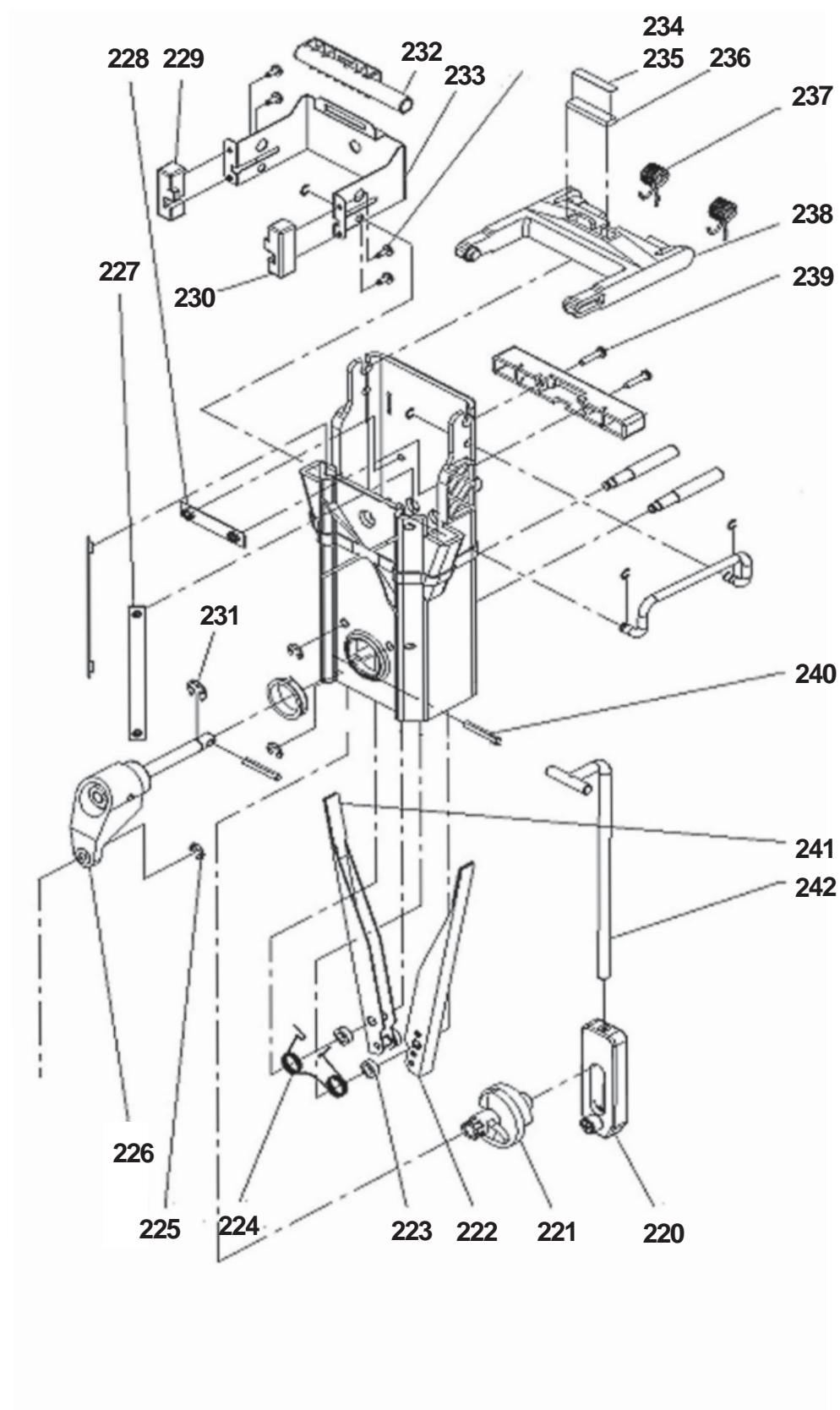
| Description; | Article no; | Detail no; | Amount/ unit; |
|---------------------------------|-------------|------------|---------------|
| Deflector, Cylinder | 4720008 | 200 | 1 |
| Pin, Crank Arm | 4720010 | 201 | 1 |
| O-ring Piston | 4720012 | 202 | 1 |
| Rubber Ring, Piston | 4720013 | 203 | 1 |
| Teflon Seal | 4720014 | 204 | 1 |
| Plate, Top | 4720015 | 205 | 1 |
| Screw, 8 x 1/2, Truss, AB, TAPP | 4720016 | 206 | 1 |
| Cylinder | 4720017 | 207 | 1 |
| Plug, Vent, Cylinder | 4720018 | 208 | 1 |
| Screw, 4-40 x ¼, Truss | 4720019 | 209 | 1 |
| Screw, 8-32 x ½, Truss | 4720020 | 210 | 1 |
| Assembly, Filter Screen | 47200213 | 211 | 1 |
| Seal, Brew Chamber | 4720022 | 212 | 1 |
| Bar, Latch | 4720023 | 213 | 1 |
| Carriage, Wiper | 4720024 | 214 | 1 |
| Rod, Carriage, Wiper | 4720025 | 215 | 1 |
| Retaining Ring, .250 | 4720026 | 216 | 1 |
| Wiper, Complete | 4720027 | 217 | 1 |
| Brew Chamber | 4720028 | 218 | 1 |
| Spring Clip, Latch Bar | 4720029 | 219 | 1 |
| Housing, Vertical Rod | 4720001 | 220 | 1 |
| Cam, Triple | 4720002 | 221 | 1 |
| Unwipe Arm Assembly | 4720003 | 222 | 1 |
| Spacer, Wipe Arm | 4720004 | 223 | 1 |
| Spring, Wipe Arm | 4720005 | 224 | 1 |
| Retaining Ring, TRU ARC | 4720006 | 225 | 1 |
| Vevarm | 4720007 | 226 | 1 |
| Plate, Ret., Cycle | 4720030 | 227 | 1 |
| Plate, Ret., Support | 4720031 | 228 | 1 |
| Latch, Block, LHS | 4720032 | 229 | 1 |
| Latch, Block, RHS | 4720033 | 230 | 1 |
| Retaining Ring | 4720034 | 231 | 1 |
| Tube, Outlet, Water | 4720035 | 232 | 1 |
| Wrap, Brew Chamber | 4720036 | 233 | 1 |
| Shim 0,2 | 1303501 | 234 | 1 |
| Shim 0,5 | 1303502 | 235 | 1 |
| Spacer, Sil., 3/16 x .350 x 1.5 | 4720038 | 236 | 1 |
| Spring, H-Frame | 4720039 | 237 | 1 |
| H-Frame | 4720040 | 238 | 1 |
| Screw, 8-32 x 3/4, PAN | 4720041 | 239 | 1 |
| Pin, Grooved, 3/16 x 1.25 | 4720046 | 240 | 1 |
| Wipe Arm, Assembly | 4720048 | 241 | 1 |
| Vertical Rod, Welded | 4720049 | 242 | 1 |











Mocca



**FOR SERVICE
please contact**

Your retail dealer

.....
.....
.....

CREM International AB

Box 960, 671 29 ARVIKA, Sweden

Tel: +46 (0)570-477 00, Fax: +46 (0)570-47719

E-mail: info.se@creminternational.com www.creminternational.com

Art. nr/Art. no.1740034