

Parts Manual

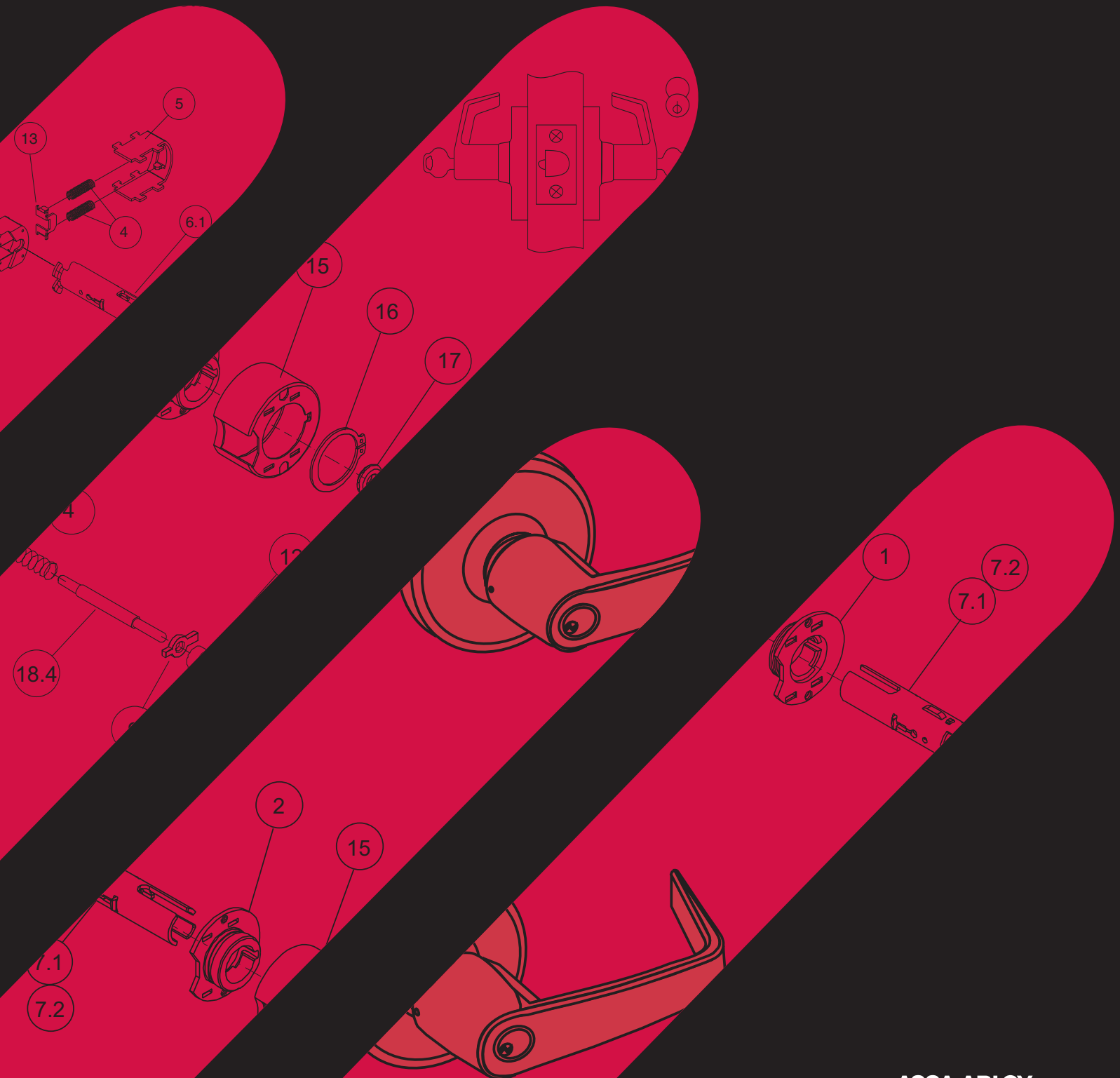


Table of Contents

Lockset Parts (by function)

| Function | ANSI | Description | Page |
|----------|------|---------------------------------------|------|
| CL3310 | F75 | Passage or Closet | 3 |
| CL3320 | F76 | Privacy, Bedroom or Bathroom..... | 4 |
| CL3329 | F93 | Hotel or Motel..... | 5 |
| CL3332 | F87 | Institutional or Utility..... | 6 |
| CL3340 | F77 | Patio or Privacy | 7 |
| CL3340NT | — | Exit Latch | 7 |
| CL3351 | F109 | Entrance or Office | 8 |
| CL3352 | — | Classroom Intruder..... | 9 |
| CL3355 | F84 | Classroom..... | 9 |
| CL3357 | F86 | Storeroom or Closet..... | 8 |
| CL3361 | F83 | Entry or Office..... | 4 |
| CL3362 | F80 | Communicating | 10 |
| CL3372 | F88 | Apartment, Exit or Public Toilet..... | 11 |
| CL3380 | — | Passage Lever x Blank Plate..... | 12 |
| CL3381 | — | Keyed Lever x Blank Plate..... | 13 |
| CL3390 | — | Passage Lever x Turnpiece | 12 |
| CL3391 | — | Keyed Lever x Turnpiece | 13 |
| CL3393 | F92 | Service Station | 8 |

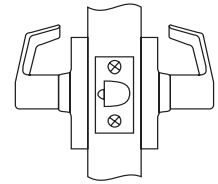
Accessories

| | |
|-------------------------------|----|
| Latches | 15 |
| Lever Designs..... | 16 |
| Cylinders..... | 17 |
| Spring Housing Assembly | 17 |
| Strikes | 18 |
| Miscellaneous Parts | 19 |

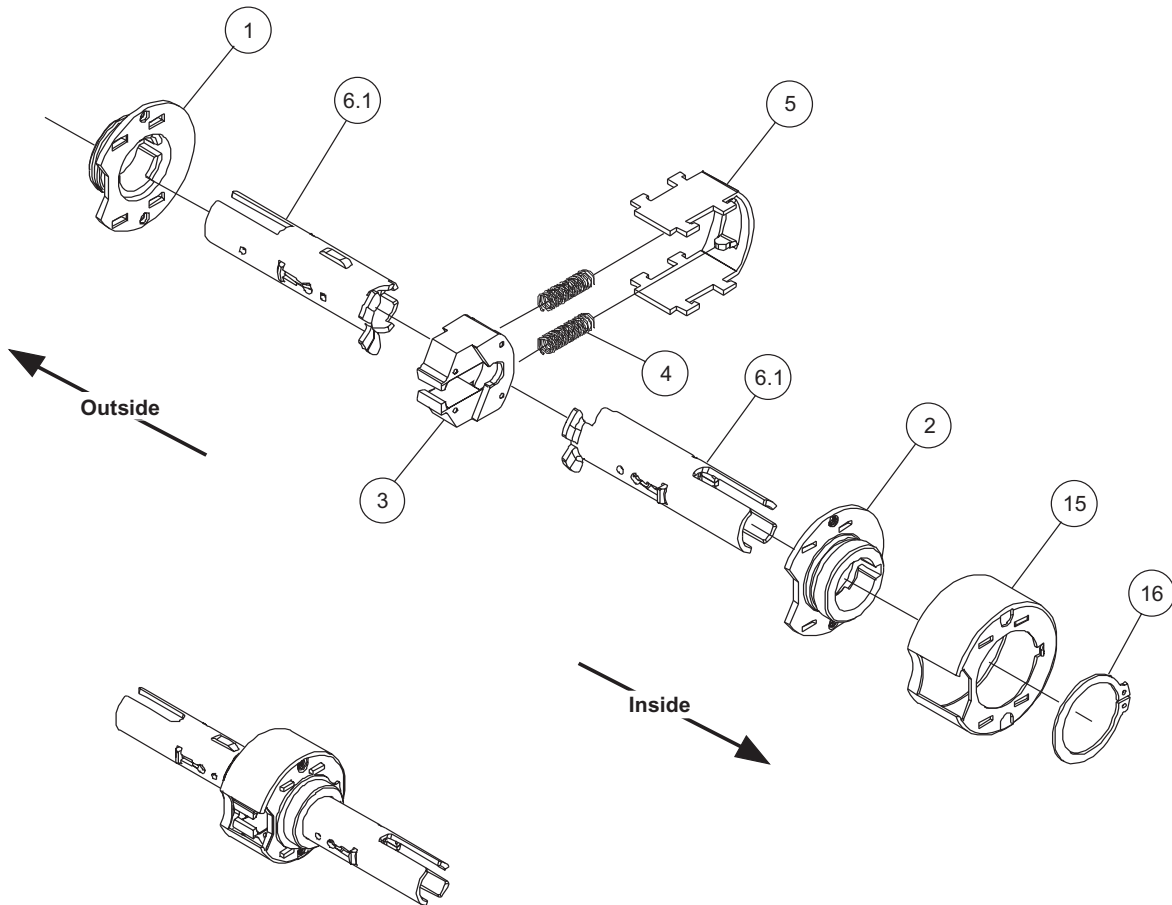
Reference

| | |
|------------------------------------|----|
| How To Order Parts | 14 |
| Cross Reference Chart | 14 |
| Installation Instructions | 20 |
| Door Manufacturer's Template | 25 |
| Troubleshooting Guide..... | 26 |

CL3310 Passage or Closet



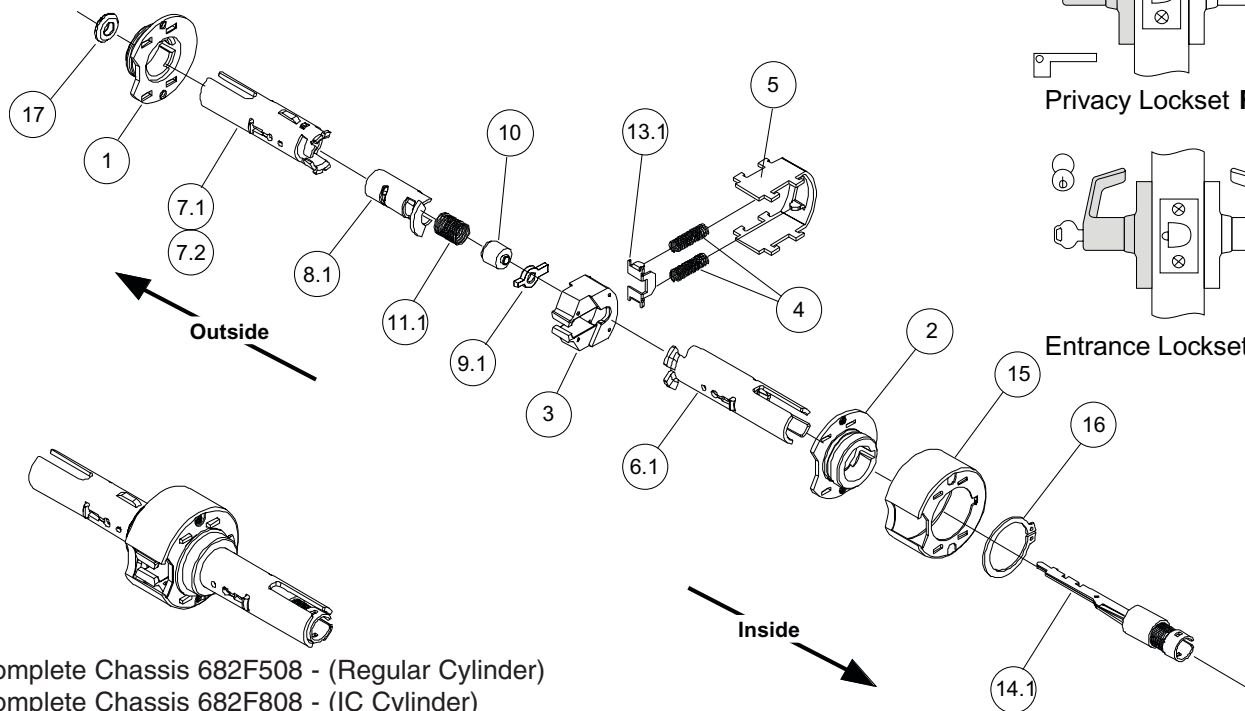
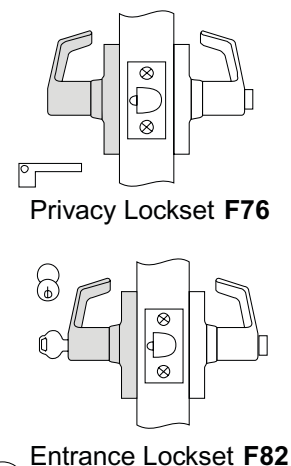
Passage Lockset **F75**



Complete Chassis 682F408

| Item | Part Number | Description | Quantity |
|------|-------------|--------------------------|----------|
| 1 | 682F255 | Flange O/S | 1 |
| 2 | 683F265 | Flange I/S | 1 |
| 3 | 682F225 | Retractor | 1 |
| 4 | 678F417 | Spring, Retractor | 2 |
| 5 | 682F218 | Frame | 1 |
| 6.1 | 685F418 | Rollback SA, Non-Locking | 2 |
| 15 | 682F318 | Housing, Chassis | 1 |
| 16 | 678F428 | Ring, Retaining | 1 |

CL3320 Privacy, Bedroom or Bathroom
CL3361 Entry or Office



Complete Chassis 682F508 - (Regular Cylinder)
 Complete Chassis 682F808 - (IC Cylinder)

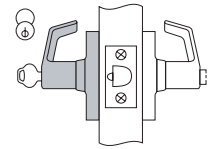
Features

Handing

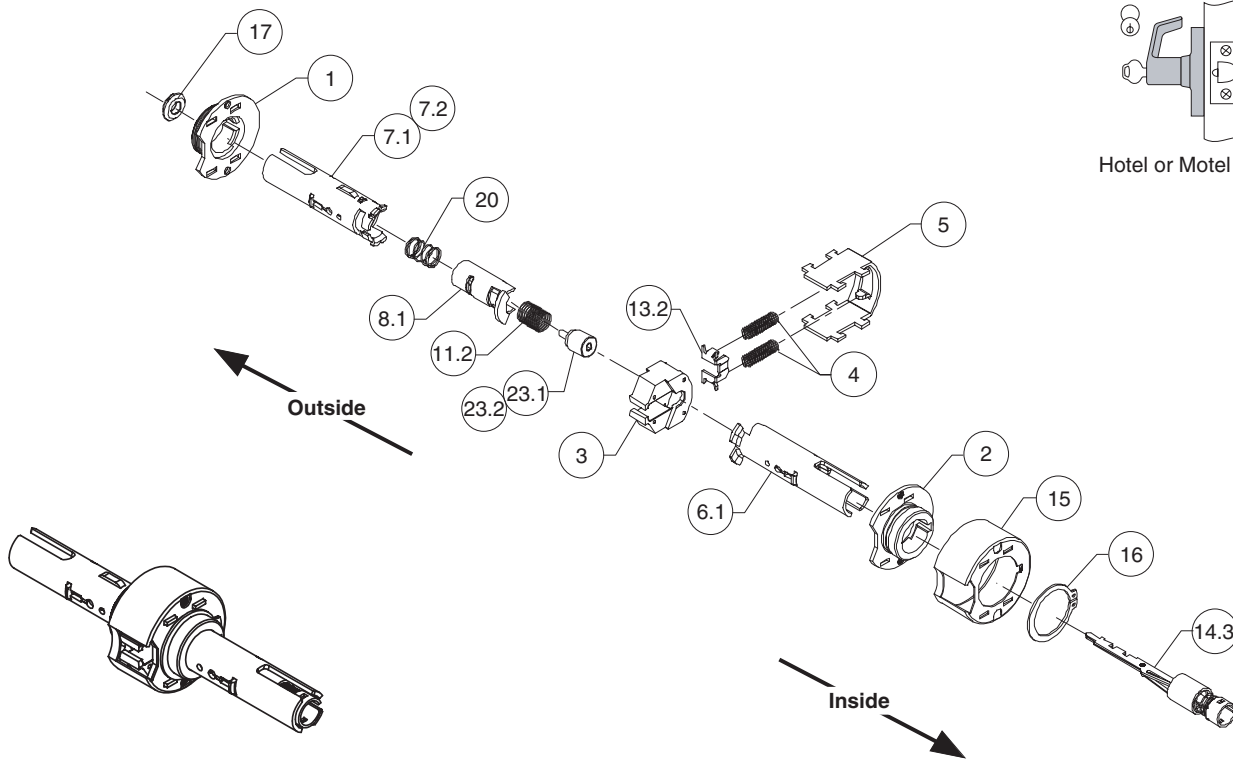
| Item | Part Number | Description | Quantity |
|------|-------------|---|----------|
| 1 | 682F255 | Flange O/S | 1 |
| 2 | 683F265 | Flange I.S | 1 |
| 3 | 682F225 | Retractor | 1 |
| 4 | 678F417 | Spring, Retractor | 2 |
| 5 | 682F218 | Frame | 1 |
| 6.1 | 685F418 | Rollback SA, Non-Locking | 2 |
| 7.1 | 682F328 | Rollback SA, (for standard cylinder only) | 1 |
| 7.2 | 682F378 | Rollback SA, (for interchangeable core cylinder only) | 1 |
| 8.1 | 682F235 | Rollback, Auxiliary | 1 |
| 9.1 | 682F288 | Dog, Locking | 1 |
| 10 | 584F779 | Insert, Locking Dog | 1 |
| 11.1 | 586F628 | Spring, Chassis | 1 |
| 13.1 | 678F288 | Catch, Linkage Bar | 1 |
| 14.1 | 586F838 | Bar SA, Linkage | 1 |
| 15 | 682F318 | Housing, Chassis | 1 |
| 16 | 678F428 | Ring, Retaining | 1 |
| 17 | 585F819 | Insert, Support Cylinder (for standard cylinder only) | 1 |

Device non-handed.

CL3329 Hotel or Motel



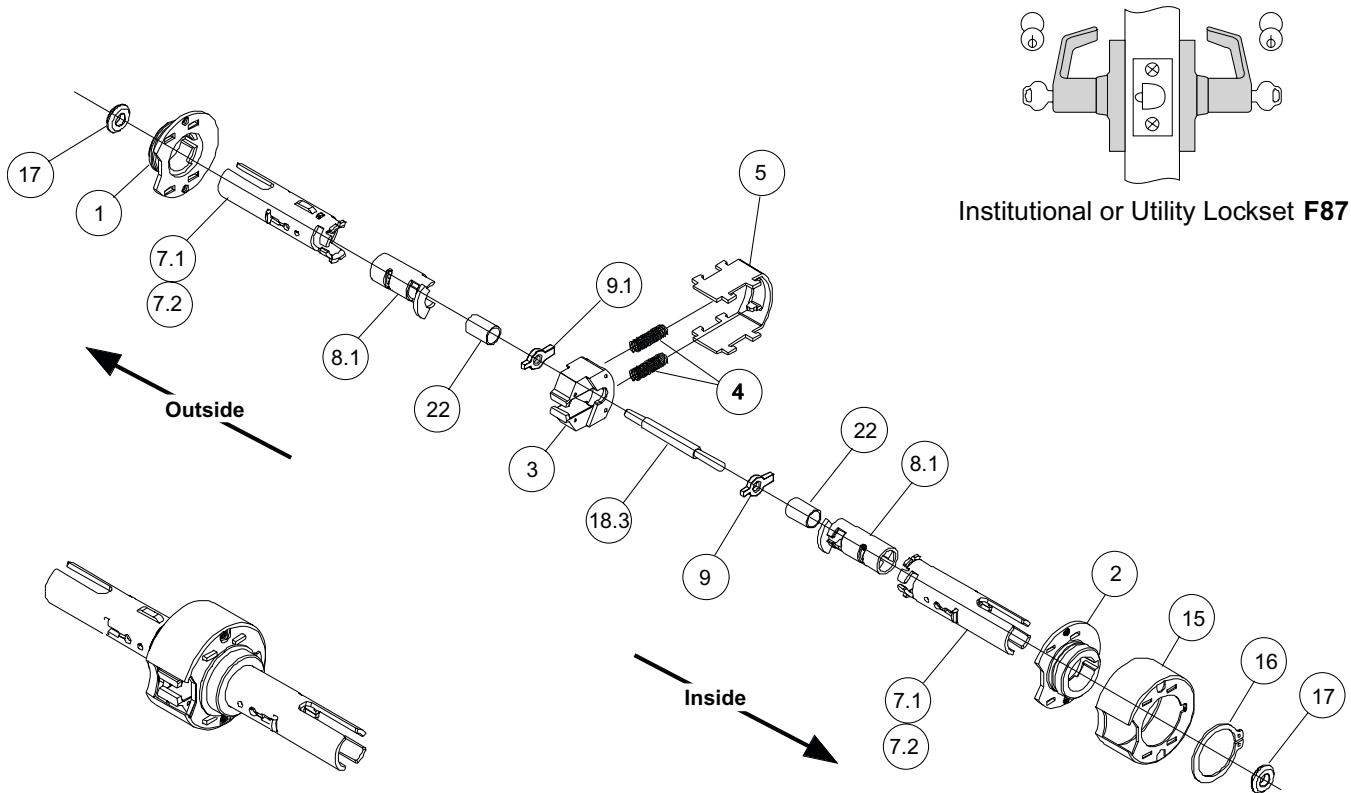
Hotel or Motel Lockset F93



Complete Chassis 682F468 - (Regular Cylinder)
 Complete Chassis 682F768 - (IC Cylinder)

| Item | Part Number | Description | Quantity |
|------|-------------|---|----------|
| 1 | 682F255 | Flange O/S | 1 |
| 2 | 682F265 | Flange, I/S | 1 |
| 3 | 682F225 | Retractor | 1 |
| 4 | 678F417 | Spring, Retractor | 2 |
| 5 | 682F218 | Frame | 1 |
| 6.1 | 685F418 | Rollback SA, Non-Locking | 2 |
| 7.1 | 682F328 | Rollback SA, (for standard cylinder only) | 1 |
| 7.2 | 682F378 | Rollback SA, (for interchangeable core cylinder only) | 1 |
| 8.1 | 682F235 | Rollback, Auxiliary | 1 |
| 11.1 | 596F808 | Spring, Chassis | 1 |
| 13.2 | 699F238 | Catch, Linkage Bar | 1 |
| 14.3 | 699F247 | Bar SA, Linkage | 1 |
| 15 | 682F318 | Housing, Chassis | 1 |
| 16 | 678F428 | Ring, Retaining | 1 |
| 17 | 585F819 | Insert, Support Cylinder (for standard cylinder only) | 1 |
| 20 | 699F207 | Spring | 1 |
| 23.1 | 699F218 | Insert, Hotel, Standard Cylinder | 1 |
| 23.2 | 699F228 | Insert, Hotel, Interchangeable Core Cylinder | 1 |

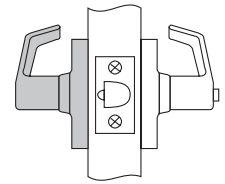
CL3332 Institutional or Utility



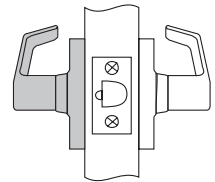
Complete Chassis 682F458 - (Regular Cylinder)
 Complete Chassis 682F758 - (IC Cylinder)

| Item | Part Number | Description | Quantity |
|------|-------------|---|----------|
| 1 | 682F255 | Flange O/S | 1 |
| 2 | 682F265 | Flange, I/S | 1 |
| 3 | 682F225 | Retractor | 1 |
| 4 | 678F417 | Spring, Retractor | 2 |
| 5 | 682F218 | Frame | 1 |
| 7.1 | 682F328 | Rollback SA, (for standard cylinder only) | 1 |
| 7.2 | 682F378 | Rollback SA, (for interchangeable core cylinder only) | 1 |
| 8.1 | 682F235 | Rollback, Auxiliary | 1 |
| 9.1 | 682F288 | Dog Locking | 1 |
| 15 | 682F318 | Housing, Chassis | 1 |
| 16 | 678F428 | Ring, Retaining | 1 |
| 17 | 585F819 | Insert, Support Cylinder (for standard cylinder only) | 1 |
| 18.3 | 678F378 | Shaft (Utility) | 1 |
| 22 | 584F858 | Sleeve (Institution) | 1 |

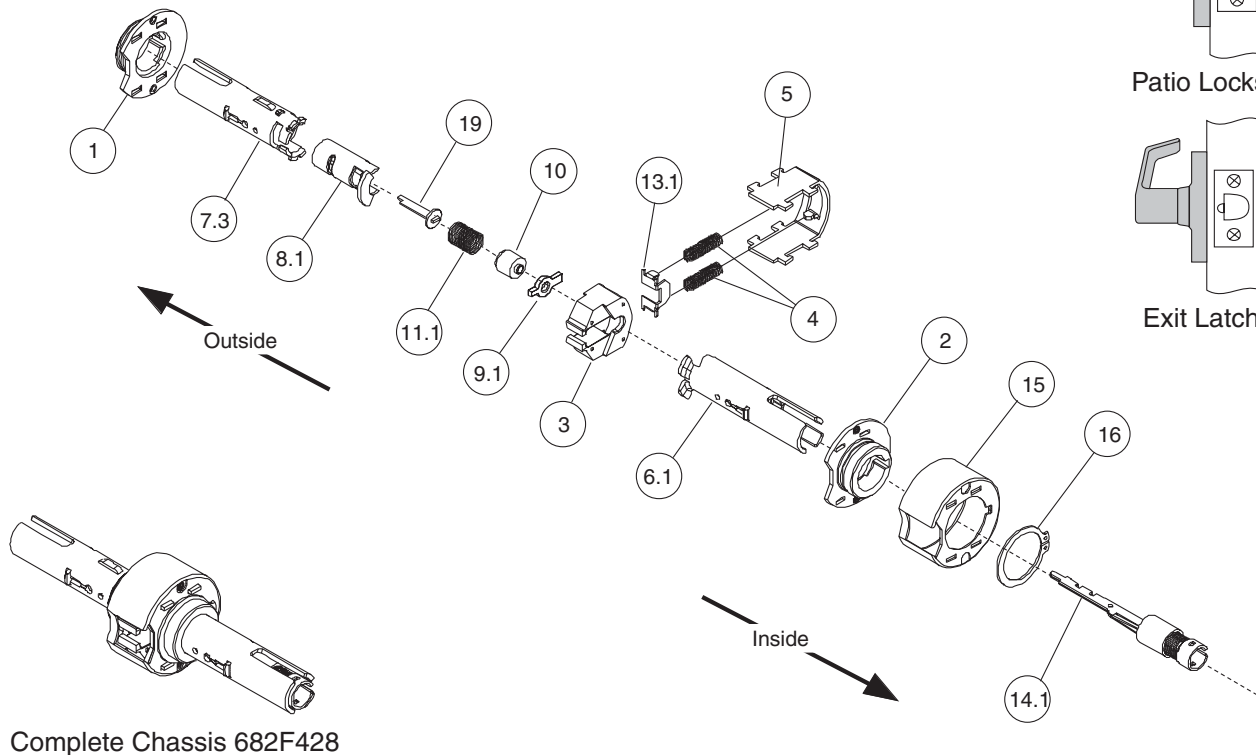
**CL3340 Patio or Privacy
CL3340NT Exit Latch**



Patio Lockset F77



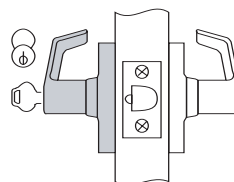
Exit Latch F89



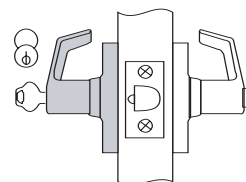
Complete Chassis 682F428

| Item | Part Number | Description | Quantity |
|------|-------------|---|----------|
| 1 | 682F255 | Flange O/S | 1 |
| 2 | 682F265 | Flange, I/S | 1 |
| 3 | 682F225 | Retractor | 1 |
| 4 | 678F417 | Spring, Retractor | 2 |
| 5 | 682F218 | Frame | 1 |
| 6.1 | 685F418 | Rollback SA, Non-Locking | 2 |
| 7.1 | 682F328 | Rollback SA, (for standard cylinder only) | 1 |
| 7.2 | 682F378 | Rollback SA, (for interchangeable core cylinder only) | 1 |
| 8.1 | 682F235 | Rollback, Auxiliary | 1 |
| 11.1 | 596F808 | Spring, Chassis | 1 |
| 13.2 | 699F238 | Catch, Linkage Bar | 1 |
| 14.3 | 599F247 | Bar SA, Linkage | 1 |
| 15 | 682F318 | Housing, Chassis | 1 |
| 16 | 678F428 | Ring, Retaining | 1 |
| 17 | 585F819 | Insert, Support Cylinder (for standard cylinder only) | 1 |
| 20 | 699F207 | Spring | 1 |
| 23.1 | 699F218 | Insert, Hotel, Standard Cylinder | 1 |
| 23.2 | 699F228 | Insert, Hotel, Interchangeable Core Cylinder | 1 |

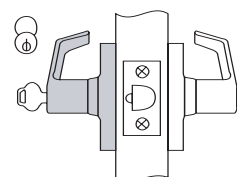
CL3351 Entrance or Office
CL3357 Storeroom
CL3393 Service Station



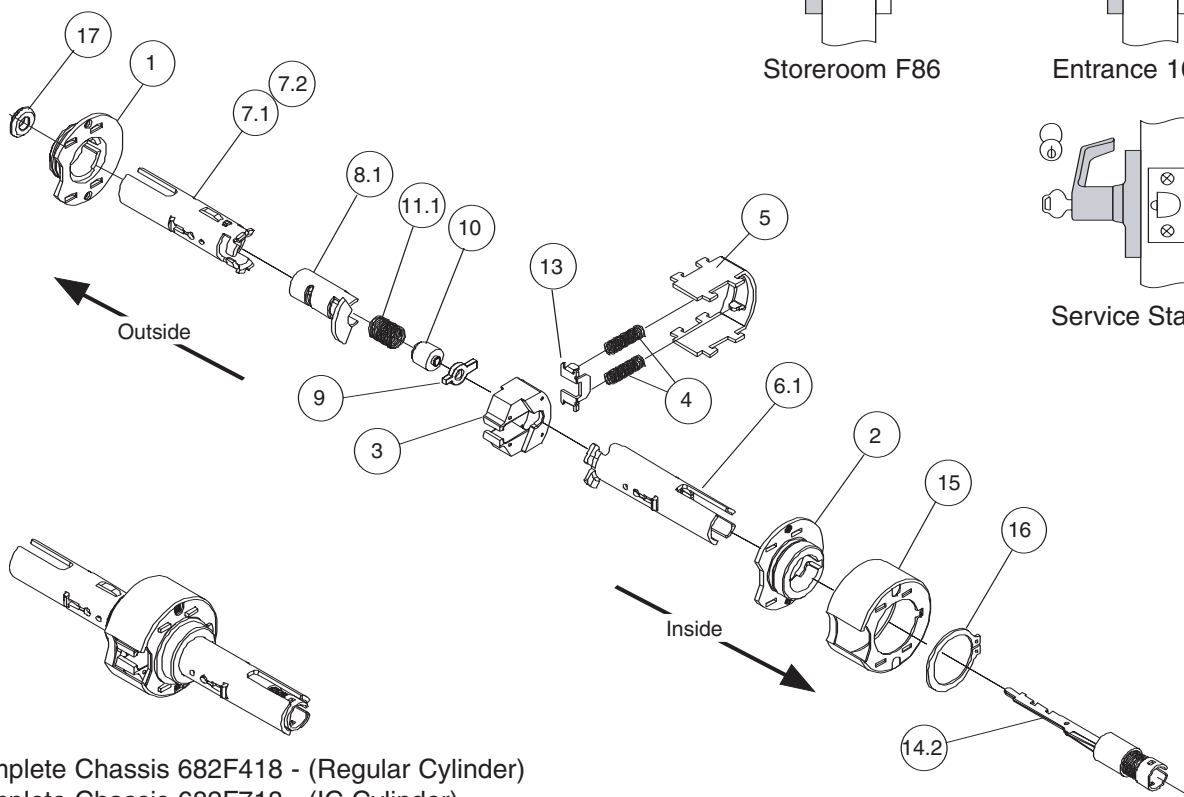
Storeroom F86



Entrance 109



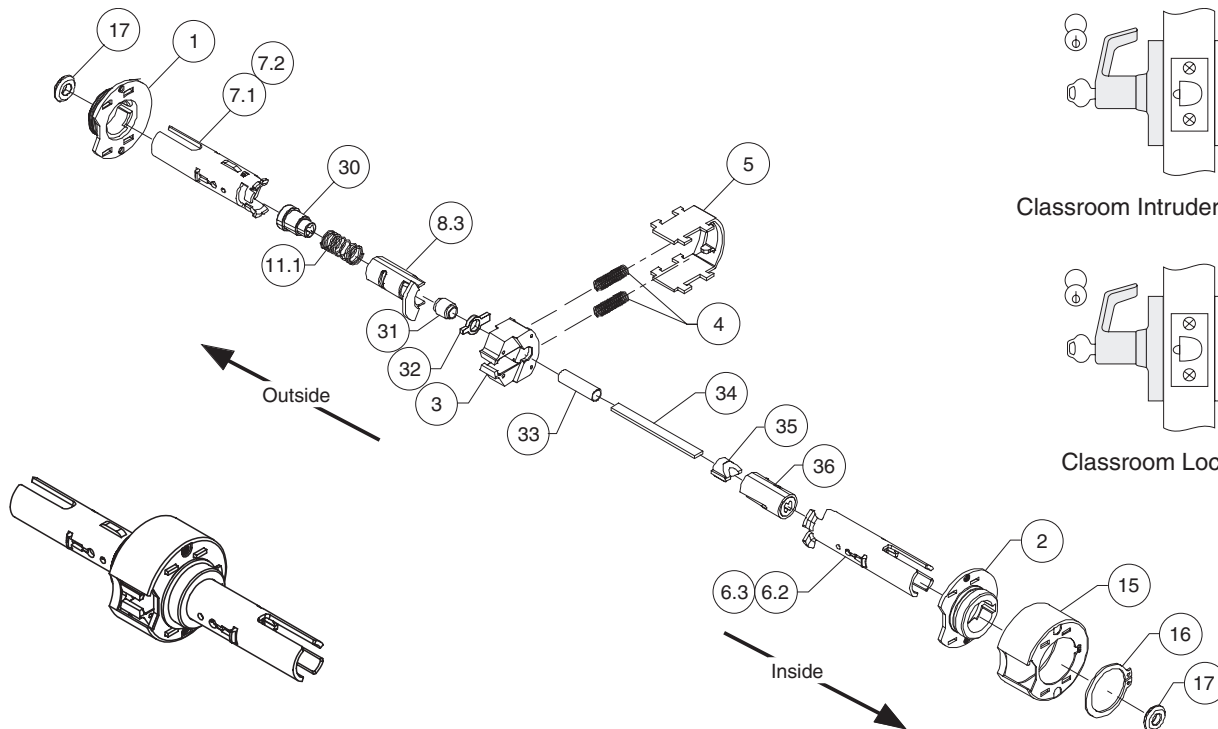
Service Station F92



Complete Chassis 682F418 - (Regular Cylinder)
 Complete Chassis 682F718 - (IC Cylinder)

| Item | Part Number | Description | Quantity |
|------|-------------|---|----------|
| 1 | 682F255 | Flange O/S | 1 |
| 2 | 682F265 | Flange, I/S | 1 |
| 3 | 682F225 | Retractor | 1 |
| 4 | 678F417 | Spring, Retractor | 2 |
| 5 | 682F218 | Frame | 1 |
| 6.1 | 685F418 | Rollback SA, Non-Locking | 1 |
| 7.1 | 682F328 | Rollback SA, (for standard cylinder only) | 1 |
| 7.2 | 682F378 | Rollback SA, (for interchangeable core cylinder only) | 1 |
| 8.1 | 682F235 | Rollback, Auxiliary | 1 |
| 9.1 | 582F288 | Dog, Locking | 1 |
| 10 | 584F779 | Insert, Locking Dog | 1 |
| 11.1 | 586F628 | Spring, Chassis | 1 |
| 13.1 | 678F288 | Catch, Linkage Bar | 1 |
| 14.2 | 584F918 | Bar SA, Linkage | 1 |
| 15 | 682F318 | Housing, Chassis | 1 |
| 16 | 678F428 | Ring, Retaining | 1 |
| 17 | 585F819 | Insert, Support Cylinder (for standard cylinder only) | 1 |

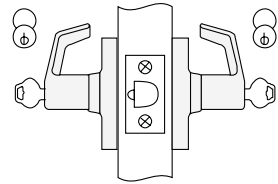
**CL3352 Intruder
CL3355 Classroom**



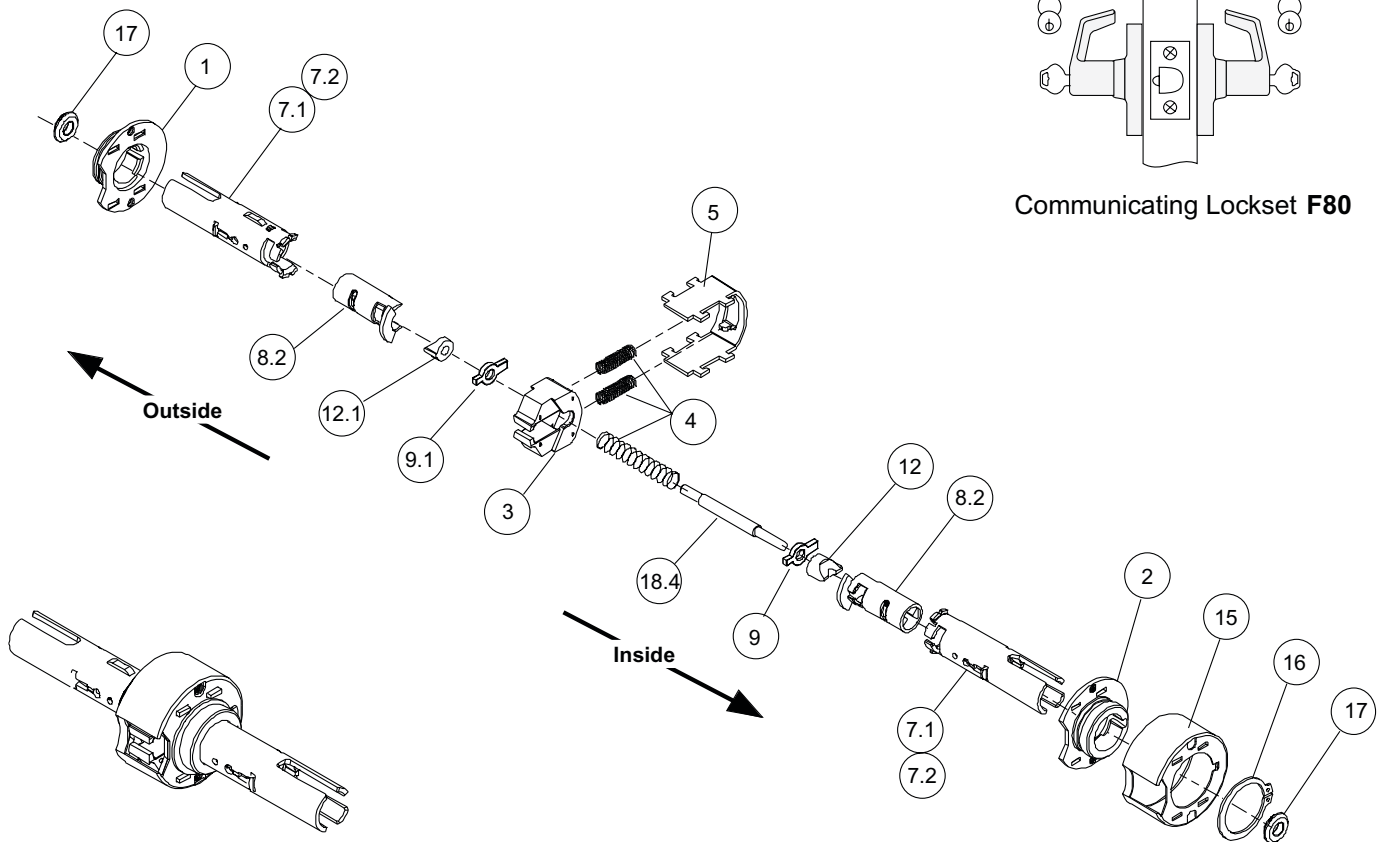
- CL3352 Complete Chassis 697F528 - (Regular Cylinder)
- CL3352 Complete Chassis 697F538 - (IC Cylinder)
- CL3355 Complete Chassis 697F498 - (IC Cylinder)

| Item | Part Number | Description | Quantity |
|------|-------------|--|----------|
| 1 | 682F255 | Flange O/S | 1 |
| 2 | 682F265 | Flange, I/S | 1 |
| 3 | 682F225 | Retractor | 1 |
| 4 | 678F417 | Spring, Retractor | 2 |
| 5 | 682F218 | Frame | 1 |
| 6.2 | 685F428 | Rollback, SA | 1 |
| 6.3 | 685F448 | Rollback, SA (for standard cylinder) | 1 |
| 7.1 | 682F328 | Rollback, SA (for interchangeable core cylinder) | 1 |
| 8.3 | 682F245 | Rollback, Auxiliary SA | 1 |
| 9.2 | 597F468 | Dog, Locking | 1 |
| 11.1 | 586F628 | Spring, Chassis | 1 |
| 12.2 | 697F455 | Follower, CAM | 1 |
| 15 | 682F318 | Housing, Chassis | 1 |
| 16 | 678F428 | Ring, Retaining | 1 |
| 17 | 585F819 | Insert, Support Cylinder (for standard cylinder) | 1 |
| 21 | 687F409 | Spacer | 1 |
| 26.1 | 697F475 | CAM and Tube Assembly | 1 |
| 29 | 697F425 | Driver, O/S | 1 |
| 30 | 697F412 | Tube | 1 |
| 31 | 697F448 | Bar, Locking | 1 |

CL3362 Communicating



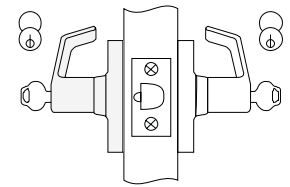
Communicating Lockset F80



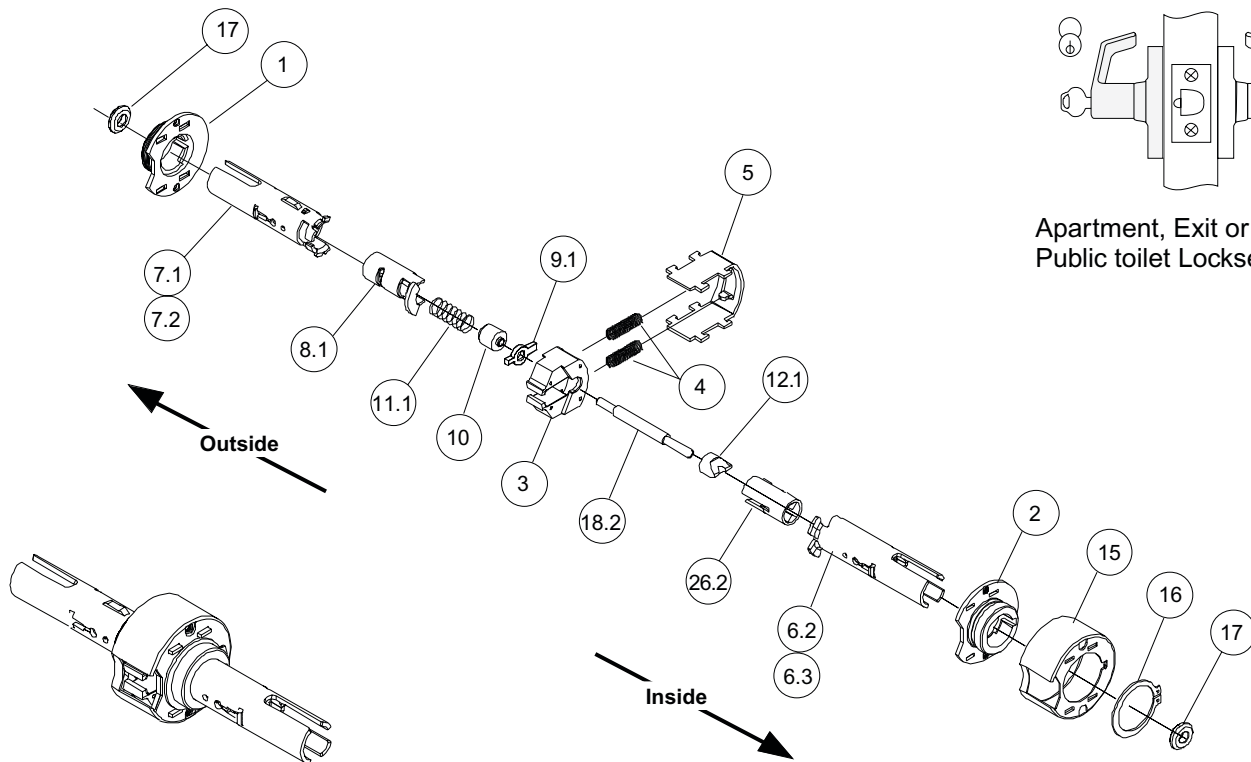
Complete Chassis 682F448 - (Regular Cylinder)
 Complete Chassis 682F748 - (IC Cylinder)

| Item | Part Number | Description | Quantity |
|------|-------------|---|----------|
| 1 | 682F255 | Flange O/S | 1 |
| 2 | 682F265 | Flange, I/S | 1 |
| 3 | 682F225 | Retractor | 1 |
| 4 | 678F417 | Spring (2 for Retractor) | 3 |
| 5 | 682F218 | Frame | 1 |
| 7.1 | 682F328 | Rollback SA, (for standard cylinder only) | 2 |
| 7.2 | 682F378 | Rollback SA, (for interchangeable core cylinder only) | 2 |
| 8.2 | 682F235 | Rollback, Auxiliary SA | 2 |
| 9.1 | 582F288 | Dog, Locking | 2 |
| 12.1 | 678F355 | Follower CAM | 2 |
| 15 | 682F318 | Housing, Chassis | 1 |
| 16 | 678F428 | Ring, Retaining | 1 |
| 17 | 585F819 | Insert, Support Cylinder (for standard cylinder only) | 2 |
| 18.4 | 678F388 | Shaft (Communication) | 1 |

**CL3372 Apartment, Exit or
Public Toilet**



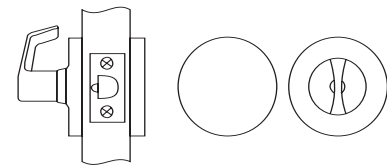
Apartment, Exit or
Public toilet Lockset **F88**



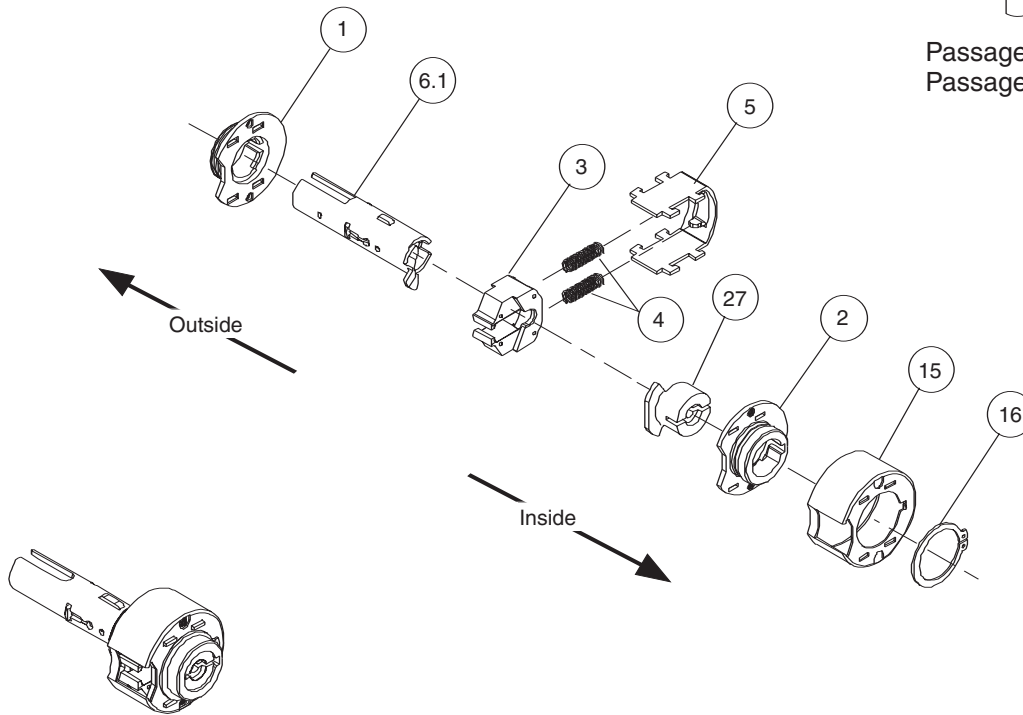
Complete Chassis 682F478 - (Regular Cylinder)
Complete Chassis 682F778 - (IC Cylinder)

| Item | Part Number | Description | Quantity |
|------|-------------|---|----------|
| 1 | 682F255 | Flange O/S | 1 |
| 2 | 682F265 | Flange, I/S | 1 |
| 3 | 682F225 | Retractor | 1 |
| 4 | 678F417 | Spring, Retractor | 2 |
| 5 | 682F218 | Frame | 1 |
| 6.2 | 685F428 | Rollback SA, (for standard cylinder only) | 1 |
| 6.3 | 685F448 | Rollback SA, (for interchangeable core cylinder only) | 1 |
| 7.1 | 682F328 | Rollback, SA (for standard cylinder only) | 1 |
| 7.2 | 682F378 | Rollback, SA (for interchangeable core cylinder only) | 1 |
| 8.1 | 682F235 | Rollback, Auxiliary | 1 |
| 9.1 | 682F288 | Dog, Locking | 1 |
| 10 | 584F779 | Insert, Locking Dog | 1 |
| 11.1 | 586F628 | Spring, Chassis | 1 |
| 12.1 | 678F355 | Follower, CAM | 1 |
| 15 | 682F318 | Housing, Chassis | 1 |
| 16 | 678F428 | Ring, Retaining | 1 |
| 17 | 585F819 | Insert, Support Cylinder (for standard cylinder only) | 1 |
| 18.2 | 678F368 | Shaft, Apartment | 1 |
| 26.2 | 697F555 | CAM and Tube Assembly | 1 |

CL3380 Passage Lever x Blank Plate
CL3390 Passage Lever x Turnpiece



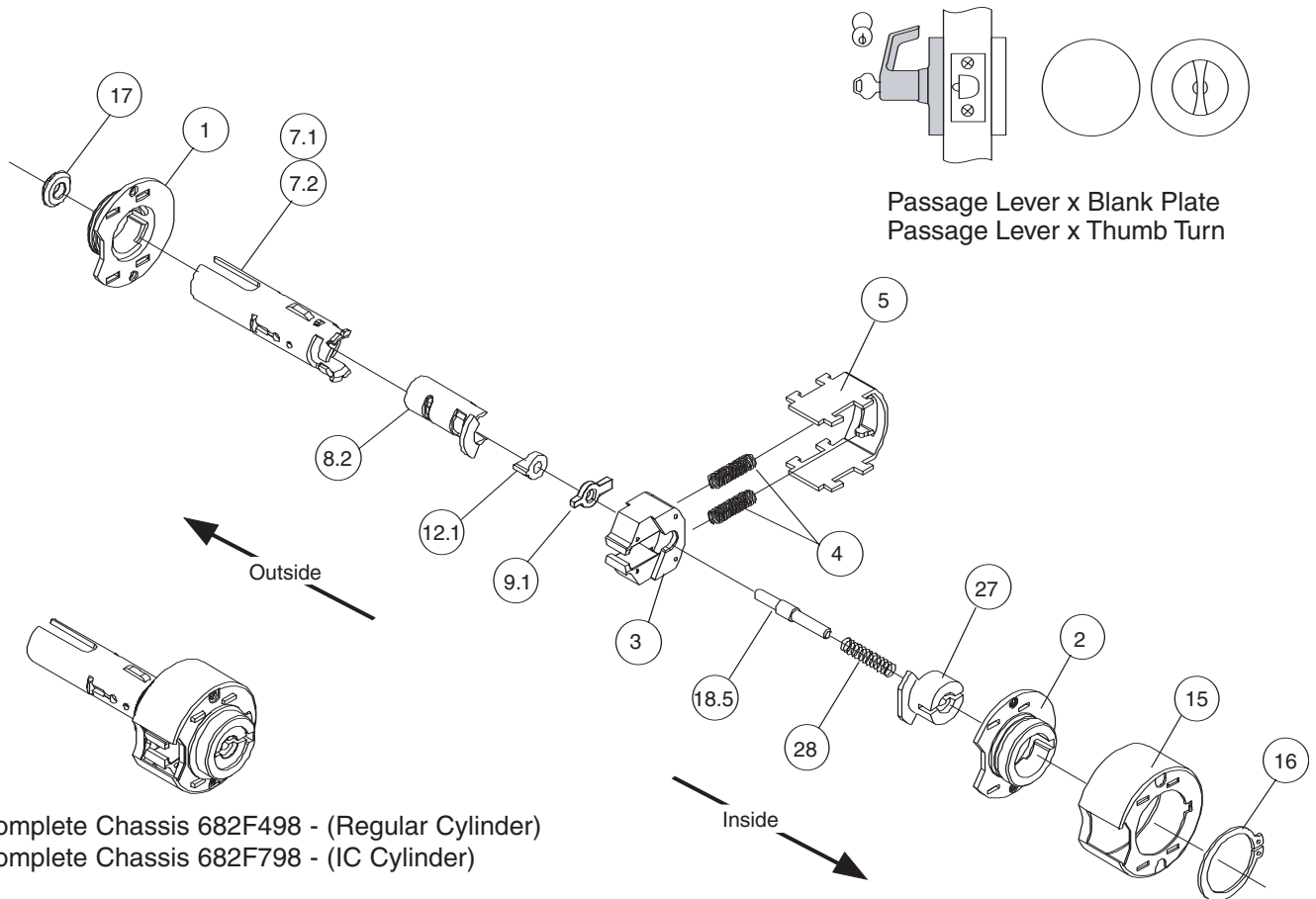
Passage Lever x Blank Plate
 Passage Lever x Turnpiece



Complete Chassis 682F488

| Item | Part Number | Description | Quantity |
|------|-------------|-------------------|----------|
| 1 | 682F255 | Flange O/S | 1 |
| 2 | 682F265 | Flange, I/S | 1 |
| 3 | 682F225 | Retractor | 1 |
| 4 | 678F417 | Spring, Reactor | 2 |
| 5 | 682F218 | Frame | 1 |
| 6.1 | 685F418 | Rollback SA | 1 |
| 15 | 682F318 | Housing, Chassis | 1 |
| 16 | 678F428 | Ring, Retaining | 1 |
| 27 | 584F908 | Driver, Thumbturn | 1 |

**CL3381 Keyed Lever x Blank Plate
CL3391 Keyed Lever x Turnpiece**



| Item | Part Number | Description | Quantity |
|------|-------------|---|----------|
| 1 | 682F255 | Flange O/S | 1 |
| 2 | 682F265 | Flange, I/S | 1 |
| 3 | 682F225 | Retractor | 1 |
| 4 | 678F417 | Spring, Retractor | 2 |
| 5 | 682F218 | Frame | 1 |
| 7.1 | 682F328 | Rollback SA, (for standard cylinder only) | 1 |
| 7.2 | 682F378 | Rollback SA, (for interchangeable core cylinder only) | 1 |
| 8.2 | 682F335 | Rollback, Auxiliary SA | 1 |
| 9.1 | 682F288 | Dog, Locking | 1 |
| 12.1 | 678F355 | Follower, CAM | 1 |
| 15 | 682F318 | Housing, Chassis | 1 |
| 16 | 678F428 | Ring, Retaining | 1 |
| 17 | 585F819 | Insert, Support Cylinder (for standard cylinder only) | 1 |
| 18.2 | 678F368 | Shaft, Apartment | 1 |
| 26.2 | 697F555 | CAM and Tube Assembly | 1 |
| 28 | 547F988 | Spring, Lever | 1 |

How to Order Parts

To order parts, use the appropriate Part Number and specify Finish (fin) as directed. For example, to order ten plain levers in 626 finish, use the following configuration:

- In order to simplify the ordering procedure, parts are only available as listed.
- Refer to the installation instructions for complete installation.
- For assistance, contact your authorized Corbin Russwin distributor or Corbin Russwin directly at the address on the back cover.

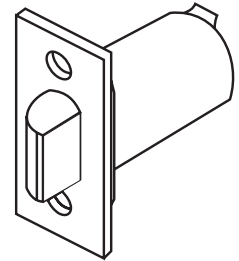
| Quantity | Part Number | Finish |
|----------|-------------|--------|
| 10 | 563F945 | 626 |

| Item | Part No. | Description | CL3310 | CL3320 | CL3329 | CL3332 | CL3340 | CL3340NT | CL3351 | CL3352 | CL3355 | CL3357 | CL3361 | CL3362 | CL3372 | CL3380 | CL3381 | CL3390 | CL3391 | CL3393 |
|------|----------|--|--------|--------|--------|--------|--------|----------|--------|--------|--------|--------|--------|--------|--------|--------|--------|--------|--------|--------|
| 1 | 682F255 | Flange O/S | 1 | 1 | 1 | 1 | 1 | 1 | 1 | 1 | 1 | 1 | 1 | 1 | 1 | 1 | 1 | 1 | 1 | 1 |
| 2 | 682F265 | Flange I/S | 1 | 1 | 1 | 1 | 1 | 1 | 1 | 1 | 1 | 1 | 1 | 1 | 1 | 1 | 1 | 1 | 1 | 1 |
| 3 | 682F225 | Retractor | 1 | 1 | 1 | 1 | 1 | 1 | 1 | 1 | 1 | 1 | 1 | 1 | 1 | 1 | 1 | 1 | 1 | 1 |
| 4 | 678F417 | Spring, Retractor | 2 | 2 | 2 | 2 | 2 | 2 | 2 | 2 | 2 | 2 | 2 | 3 | 2 | 2 | 2 | 2 | 2 | 2 |
| 5 | 682F218 | Frame | 1 | 1 | 1 | 1 | 1 | 1 | 1 | 1 | 1 | 1 | 1 | 1 | 1 | 1 | 1 | 1 | 1 | 1 |
| 6.1 | 685F418 | Rollback SA, Non-Locking | 2 | 1 | 1 | | 1 | 1 | 1 | | 1 | 1 | 1 | | 1 | | | 1 | | 1 |
| 6.2 | 685F428 | Rollback SA, (for std. cylinder) | | | | | | | | 1 | 1 | | | | 1 | | | | | |
| 6.3 | 685F448 | Rollback SA, (for IC core cylinder) | | | | | | | | 1 | 1 | | | | 1 | | | | | |
| 7.1 | 682F328 | Rollback SA, (for std. cylinder) | | 1 | 1 | 2 | | | 1 | 1 | 1 | 1 | 1 | 2 | 1 | | 1 | | 1 | 1 |
| 7.2 | 682F378 | Rollback SA, (for IC core cylinder) | | 1 | 1 | 2 | | | 1 | 1 | 1 | 1 | 1 | 2 | 1 | | 1 | | 1 | 1 |
| 7.3 | 682F388 | Rollback SA | | | | | 1 | 1 | | | | | | | | | | | | |
| 8.1 | 682F235 | Rollback, Auxiliary | | 1 | 1 | 2 | 1 | 1 | 1 | | | 1 | 1 | | 1 | | | | | 1 |
| 8.2 | 682F335 | Rollback, Auxiliary SA | | | | | | | | | | | | 2 | | | 1 | | 1 | |
| 8.3 | 682F245 | Auxiliary Rollback | | | | | | | | 1 | 1 | | | | | | | | | |
| 9 | 682F288 | Dog, Locking | | 1 | | 2 | 1 | 1 | 1 | | | 1 | 1 | 2 | 1 | | 1 | | 1 | 1 |
| 10 | 584F779 | Insert, Locking Dog | | 1 | | | 1 | 1 | 1 | | | 1 | 1 | | 1 | | | | | 1 |
| 11.1 | 586F628 | Spring, Chassis | | 1 | | | 1 | 1 | 1 | 1 | 1 | 1 | 1 | | 1 | | | | | 1 |
| 11.2 | 586F808 | Spring, Chassis | | | 1 | | | | | | | | | | | | | | | |
| 12 | 678F355 | Follower CAM | | | | | | | | | | | | 2 | 1 | | 1 | | 1 | |
| 13 | 678F288 | Catch, Linkage Bar | | 1 | | | 1 | 1 | 1 | | | 1 | 1 | | | | | | | 1 |
| 14.1 | 586F838 | Bar SA, Linkage | | 1 | | | 1 | 1 | | | | | 1 | | | | | | | |
| 14.2 | 284F918 | Bar SA, Linkage | | | | | | | 1 | | | | | | | | | | | 1 |
| 14.3 | 699F247 | Bar SA, Linkage | | | 1 | | | | | | | | | | | | | | | |
| 15 | 382F318 | Housing, Chassis | 1 | 1 | 1 | 1 | 1 | 1 | 1 | 1 | 1 | 1 | 1 | 1 | 1 | 1 | 1 | 1 | 1 | 1 |
| 16 | 678F428 | Ring, Retainer | 1 | 1 | 1 | 1 | 1 | 1 | 1 | 1 | 1 | 1 | 1 | 1 | 1 | 1 | 1 | 1 | 1 | 1 |
| 17 | 585F819 | Insert, Support Cylinder (for std. cylinder) | | 1 | 1 | 2 | | | 1 | 2 | 2 | 1 | 1 | 2 | 2 | | 1 | | 1 | 1 |
| 18.1 | 678F308 | Shaft (Classroom) | | | | | | | | | | | | | | | | | | |
| 18.2 | 678F368 | Shaft (Apartment) | | | | | | | | | | | | | 1 | | | | | |
| 18.3 | 678F378 | Shaft (Utility) | | | | 1 | | | | | | | | | | | | | | |
| 18.4 | 678F388 | Shaft (Communication) | | | | | | | | | | | | 1 | | | | | | |
| 18.5 | 584F898 | Shaft | | | | | | | | | | | | | | | 1 | | 1 | |
| 19 | 584F938 | Tailpiece SA, Patio | | | | | 1 | 1 | | | | | | | | | | | | |
| 20 | 199F928 | Spring | | | | | | | | | | | | | | | | | | |
| 21 | 584F839 | Guide, Shaft | | | | | | | | | | | | | | | | | | |
| 22 | 584F858 | Sleeve (Institution) | | | | 2 | | | | | | | | | | | | | | |
| 23.1 | 699F218 | Insert, Hotel (std. cylinder) | | | 1 | | | | | | | | | | | | | | | |
| 23.2 | 699F228 | Insert, Hotel, (IC core cylinder) | | | 1 | | | | | | | | | | | | | | | |
| 26 | 697F555 | CAM and Tube Assembly | | | | | | | | | | | | | 1 | | | | | |
| 27 | 584F908 | Driver, Thumbturn | | | | | | | | | | | | | | 1 | 1 | 1 | 1 | |
| 28 | 547F988 | Spring, Lever | | | | | | | | | | | | | | | 1 | | 1 | |
| 29 | 699F238 | Catch Bar | | | 1 | | | | | | | | | | | | | | | |
| 30 | 697F425 | Driver, Outside | | | | | | | | 1 | 1 | | | | | | | | | |
| 31 | 697F409 | Spacer | | | | | | | | 1 | 1 | | | | | | | | | |
| 32 | 697F468 | Dog, Locking | | | | | | | | 1 | 1 | | | | | | | | | |
| 33 | 697F412 | Tube | | | | | | | | 1 | 1 | | | | | | | | | |
| 34 | 697F448 | Bar, Locking | | | | | | | | 1 | 1 | | | | | | | | | |
| 35 | 697F458 | Follower, CAM | | | | | | | | 1 | 1 | | | | | | | | | |
| 36 | 697F465 | CAM and Tube SA | | | | | | | | 1 | 1 | | | | | | | | | |

Latches

Plain Latch

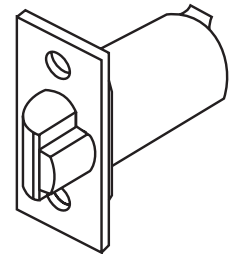
| Part No. | Front | Front Width | Bracket |
|----------|----------------|---------------|---------------|
| 586F16 | Square Corner | 1-1/8" (29mm) | 2-3/4" (70mm) |
| 596F66 | Rounded Corner | 1-1/8" (29mm) | 2-3/4" (70mm) |
| 586F80 | Square Corner | 1-1/8" (29mm) | 3-3/4" (95mm) |
| 586F86 | Rounded Corner | 1-1/8" (29mm) | 3-3/4" (95mm) |
| 598F20 | Square Corner | 1-1/8" (29mm) | 5" (127mm) |
| 601F24 | Rounded Corner | 1-1/8" (29mm) | 5" (127mm) |



PLAIN

Deadlocking Latch

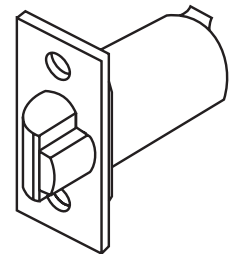
| Part No. | Front | Front Width | Bracket |
|----------|----------------|---------------|---------------|
| 586F17 | Square Corner | 1-1/8" (29mm) | 2-3/4" (70mm) |
| 596F67 | Rounded Corner | 1-1/8" (29mm) | 2-3/4" (70mm) |
| 586F81 | Square Corner | 1-1/8" (29mm) | 3-3/4" (95mm) |
| 586F87 | Rounded Corner | 1-1/8" (29mm) | 3-3/4" (95mm) |
| 598F21 | Square Corner | 1-1/8" (29mm) | 5" (127mm) |
| 601F25 | Rounded Corner | 1-1/8" (29mm) | 5" (127mm) |



DEADLOCKING

Throw-Off Latch

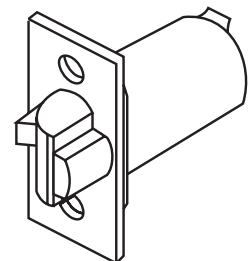
| Part No. | Front | Front Width | Bracket |
|----------|----------------|---------------|---------------|
| 586F17 | Square Corner | 1-1/8" (29mm) | 2-3/4" (70mm) |
| 586F82 | Square Corner | 1-1/8" (29mm) | 3-3/4" (95mm) |
| 586F88 | Rounded Corner | 1-1/8" (29mm) | 3-3/4" (95mm) |
| 598F22 | Square Corner | 1-1/8" (29mm) | 5" (127mm) |
| 601F26 | Rounded Corner | 1-1/8" (29mm) | 5" (127mm) |



THROW-OFF

3/4" Throw Deadlocking Fire Latch


| Part No. | Front | Front Width | Bracket |
|----------|---------------|---------------|---------------|
| 601F69 | Square Corner | 1-1/8" (29mm) | 2-3/4" (70mm) |



**3/4" THROW
DEADLOCKING
FIRE LATCH
for Pair of Doors**

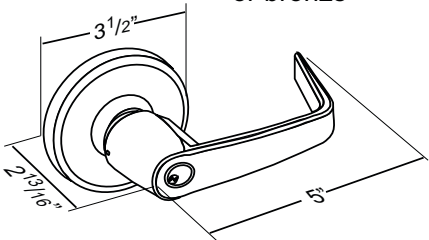
When ordering latchbolt, specify Part No. x Finish (e.g., 586F16 x 626)


Lever Designs

Newport 

NZD Lever: Die cast zinc
Rose: Wrought brass or bronze

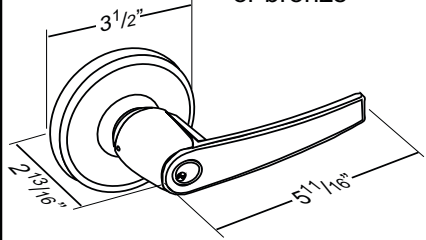
NSD Lever: Cast bronze
Rose: Wrought brass or bronze




Armstrong 

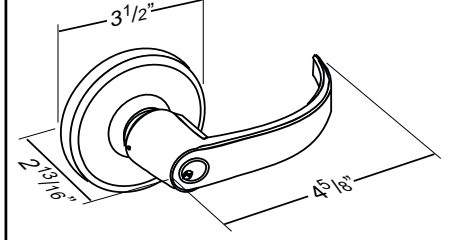
AZD Lever: Die cast zinc
Rose: Wrought brass or bronze

ASD Lever: Cast bronze
Rose: Wrought brass or bronze



Princeton* 

PZD Lever: Die cast zinc
Rose: Wrought brass or bronze



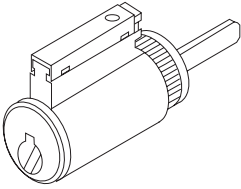
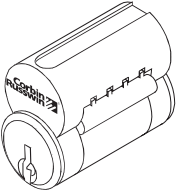
Lever for Doors 1-3/4" - 2" Doors

| Application | NZD | AZD | PZD |
|---------------------------------------|---------|---------|---------|
| Plain | 563F945 | 563F885 | 685F505 |
| Cylinder or Button | 563F955 | 563F895 | 685F515 |
| Intruder | 714F065 | 714F005 | 714F095 |
| Emergency Key Hole | 563F965 | 563F905 | 685F525 |
| I/C Cylinder - 6 Pin | 585F715 | 585F705 | 685F535 |
| I/C Cylinder - 6 Pin Intruder | 714F335 | 714F305 | 714F665 |
| I/C Cylinder - 7 Pin | 600F415 | 600F425 | 685F545 |
| I/C Cylinder - 7 Pin Intruder | 714F375 | 714F315 | 714F675 |
| Best® Cylinder Cutout | 596F825 | NA | 685F555 |
| Best Cylinder Cutout Intruder | 714F425 | NA | 714F755 |
| Schlage® IC Cylinder Cutout | 690F975 | N/A | 691F035 |
| Schlage IC Cylinder Cutout - Intruder | 714F455 | NA | 714F785 |
| Sargent® Cylinder Cutout | 578F435 | 695F075 | 685F305 |
| Sargent Cylinder Cutout - Intruder | 714F125 | 715F035 | 714F725 |

Lever for Doors 2" - 2-1/4" Doors

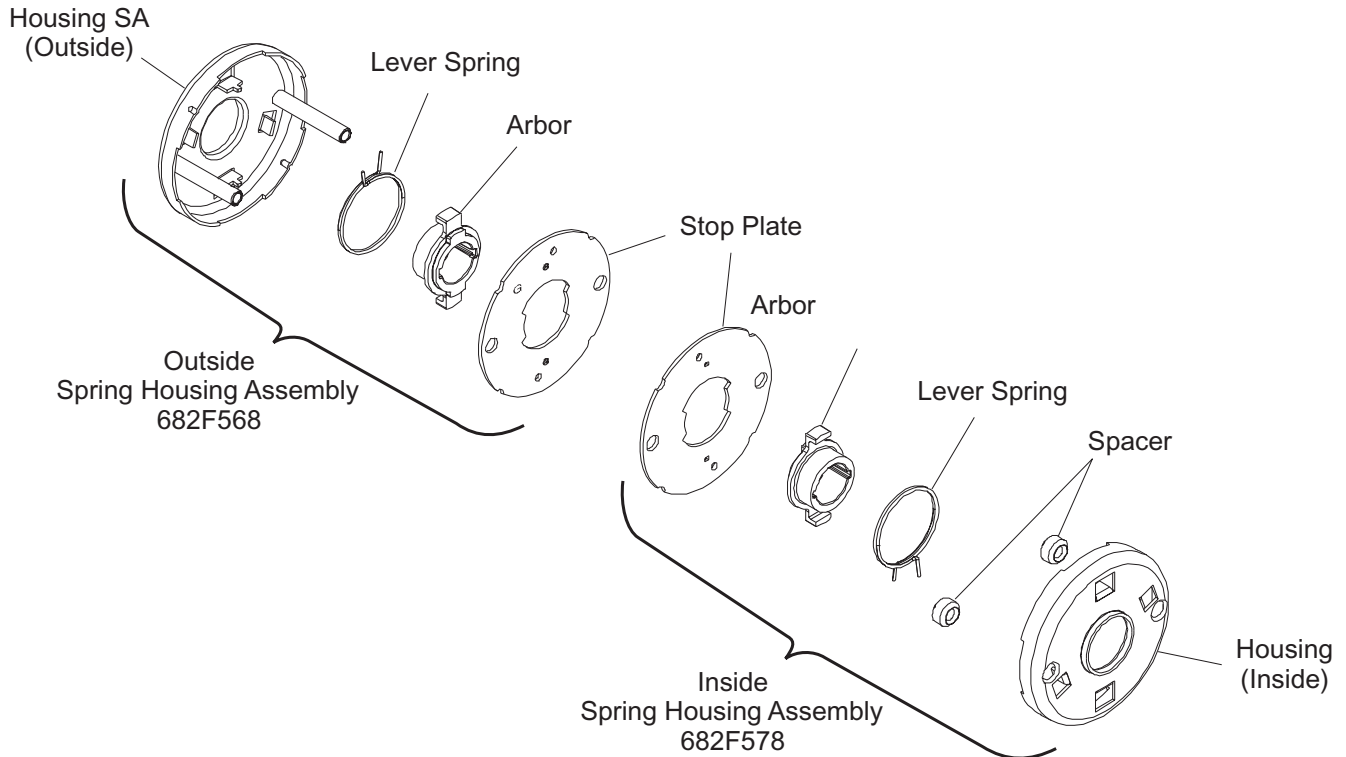
| Application | NZD | AZD | PZD |
|---------------------------------------|---------|---------|---------|
| Plain | 684F825 | 684F775 | 685F705 |
| Cylinder or Button | 684F835 | 684F785 | 685F715 |
| Intruder | 714F215 | 714F155 | 714F245 |
| Emergency Key Hole | 684F845 | 684F795 | 685F725 |
| I/C Cylinder - 6 Pin | 684F865 | 684F805 | 685F735 |
| I/C Cylinder - 6 Pin Intruder | 714F545 | 714F435 | 714F815 |
| I/C Cylinder - 7 Pin | 684F875 | 684F815 | 685F745 |
| I/C Cylinder - 7 Pin Intruder | 714F555 | 714F495 | 714F825 |
| Best Cylinder Cutout | 684F885 | NA | 685F755 |
| Best Cylinder Cutout Intruder | 714F605 | NA | 714F905 |
| Schlage IC Cylinder Cutout | 690F985 | NA | 691F045 |
| Schlage IC Cylinder Cutout - Intruder | 714F635 | NA | 714F935 |
| Sargent Cylinder Cutout | 684F855 | 697F995 | 685F315 |
| Sargent Cylinder Cutout - Intruder | 714F275 | 714F185 | 714F875 |

Cylinders

| | |
|---|---|
|  |  |
| .496" plug dia. Pyramid .509" plug dia. conventional .552" plug dia. security Brass, 6-pin 2 nickel silver keys Finishes: 606, 626 | .496" plug dia. Pyramid .509" plug dia. conventional .552" plug dia. security Brass, 6-pin 2 nickel silver keys Finishes: 606, 626, 611, 612, 613, 625, 626 |

| Compatibility with Competitive Cylinders | |
|--|---|
| Competitive Cylinders | Parts Required for Installation |
| <i>Schlage</i> conventional 21-002, 23-001 or 23-013 | 682F39-8 Tailpiece included with M06 options. |
| <i>Schlage</i> Primus 20-548, 20-78 or 20-750 | 682F39-8 Tailpiece included with M06 options. |
| Best® style core, 6 or 7 Pin | 682F95-8 specify option M08 Accommodates 6 and 7 pin cores |
| <i>Sargent</i> 13-3268 | 682F96-9 Tailpiece Kit and Special Lever specify option M09 |
| <i>Schlage</i> IC Core | 697F942 Tailpiece and Special Lever specify option M69 |

| | Standard Cylinder | Interchangeable Core |
|----------------------------|--------------------------|-----------------------------|
| Conventional 6-Pin | 2000-033 (Std.) | 8000 |
| Conventional 7-Pin | 2000-033-7 | 8000-7 |
| Emhart Security | 2010-033 | 8010 |
| Hotel 6-Pin | 2001-034 | 8001-034 |
| Hotel 7-Pin | 2001-034-7 | 8001-034-7 |
| Pyramid Security | 2027-033 | 8027 |
| Pyramid High Security | 2020-033 | 8020 |
| Schlage® C Keyway | 2400-033-C | NA |
| <i>Schlage</i> C-K Keyway | 2400-033-CK | NA |
| <i>Sargent</i> ® LA Keyway | 2400-033-LA | NA |



Strikes

ANSI Curved Lip (standard)
 Brass or bronze
 4-7/8" (124mm) x 1-1/4" (32mm) x 1-1/4" (32mm) lip to center

Optional lip lengths: 1" (25mm), 1-1/8" (29mm), 1-3/8" (35mm), 1-1/2" (38mm), 1-3/4" (44mm), 2" (51mm), 2-1/2" (57mm), 2-1/2" (63mm), 2-3/4" (70mm), 3" (76mm)

To order, specify 217L13 x Lip Length x Finish.

Curved Lip Box
 Brass or bronze
 2-3/4" (70mm) x 1-1/8" (29mm) x 1-1/4" (32mm) lip to center

Optional lip lengths: 1" (25mm), 1-1/8" (29mm), 1-3/8" (35mm), 1-1/2" (38mm), 1-3/4" (44mm), 2" (51mm), 2-1/2" (57mm), 2-1/2" (63mm), 2-3/4" (70mm), 3" (76mm)

To order, specify 586L19 x Lip Length x Finish.

Rabbeted Front and Strike
 Brass or bronze
 4" (102mm) x 5/8" (16mm) for 1/2" (13mm) rabbet

No Optional lip lengths

To order, specify 601F28 x Finish.

ANSI Wrought Strike Box
 To order, specify 120F 76-8.

| Rose Liners | |
|--------------------------------------|---|
| 678F248 | Outside Rose Liners - Doors 1-3/4" - 2" Thick |
| 678F498 | Outside Rose Liners - Doors over 2" Thick |
| 678F238 | Inside Rose Liners - Doors 1-3/4" - 2" Thick |
| 678F488 | Inside Rose Liners - Doors over 2" Thick |
| Housing Assembly - Dummy Trim | |
| 686F858 | Housing Assembly - Inside Dummy Trim - CL3350, CL3370 |
| 686F868 | Housing Assembly - Outside Dummy Trim - CL3370 |
| Roses/Thumbturns | |
| 678F25 x finish | Rose (Inside & Outside) |
| 598F59 x finish | Rose Blank Plate - CL3380, CL3390 |
| 586F51 x finish | Thumbturn Assembly - Doors 1-3/4" - 2" thick - CL3390, CL3391 |
| 686F88 x finish | Thumbturn Assembly - Doors over 2" thick - CL3390, CL3391 |
| Buttons | |
| 585F76 x finish | Turnbutton - CL3351 |
| 585F77 x finish | Push button - CL3320, CL3340, CL3361 |
| 585F78 x finish | Hotel Button - CL3329 |
| 585F79 x finish | Slotted Button - CL3393 |
| Screw Packets | |
| 604F22 x finish | Latch & ANSI Strike - Phillips head |
| 604F23 x finish | Latch & ANSI Strike - Spanner head |
| 604F24 x finish | Latch & ANSI Strike - Torx® head |
| 604F25 x finish | Latch & ANSI Strike - Hex Socket head |
| 604F26 x finish | Latch & T-Strike - Phillips head |
| 604F27 x finish | Latch & T-Strike - Spanner head |
| 604F28 x finish | Latch & T-Strike - Torx head |
| 604F29 x finish | Latch & T-Strike - Hex Socket head |
| 480F68 x finish | Rabbetted Strike - Phillips head |
| 596F61 x finish | Rabbetted Strike - Spanner head |
| 596F62 x finish | Rabbetted Strike - Torx head |
| 596F63 x finish | Rabbetted Strike - Hex Socket head |
| Mounting Packets | |
| 682F208 | All other functions - Doors 1-3/4" - 2" Thick |
| 682F618 | All other functions - Doors over 2" Thick |
| 682F628 | CL3380,CL3381- Doors 1-3/4" - 2" Thick |
| 682F638 | CL3380,CL3381- Doors over 2" Thick |
| 682F64 x finish | CL3390, CL3391-Doors 1-3/4"-2" Thick - Phillips head |
| 682F67 x finish | CL3390,CL3391- Doors 1-3/4" - 2" Thick - Spanner head |
| 682F68 x finish | CL3390,CL3391- Doors 1-3/4" - 2" Thick - Torx head |
| 682F69 x finish | CL3390,CL3391- Doors 1-3/4" - 2" Thick - Hex Socket head |
| 682F65 x finish | CL3390,CL3391- Doors over 2" Thick - Phillips head |
| 682F86 x finish | CL3390,CL3391- Doors over 2" Thick - Spanner head |
| 682F87 x finish | CL3390,CL3391- Doors over 2" Thick - Torx head |
| 682F88 x finish | CL3390,CL3391- Doors over 2" Thick - Hex Socket head |
| 684F44 x finish | CL3350 Half Dummy Trim - Phillips head |
| 684F45 x finish | CL3350 Half Dummy Trim - Spanner head |
| 684F46 x finish | CL3350 Half Dummy Trim - Torx head |
| 684F47 x finish | CL3350 Half Dummy Trim - Hex Socket head |
| 684F528 | CL3370 Full Dummy Trim |
| Emergency Release Tool | |
| 596F548 | CL3320 Emergency Release Tool |
| IC Driver Packet | |
| 682F918 | IC Driver & Spacer Packet |

Installation Instructions

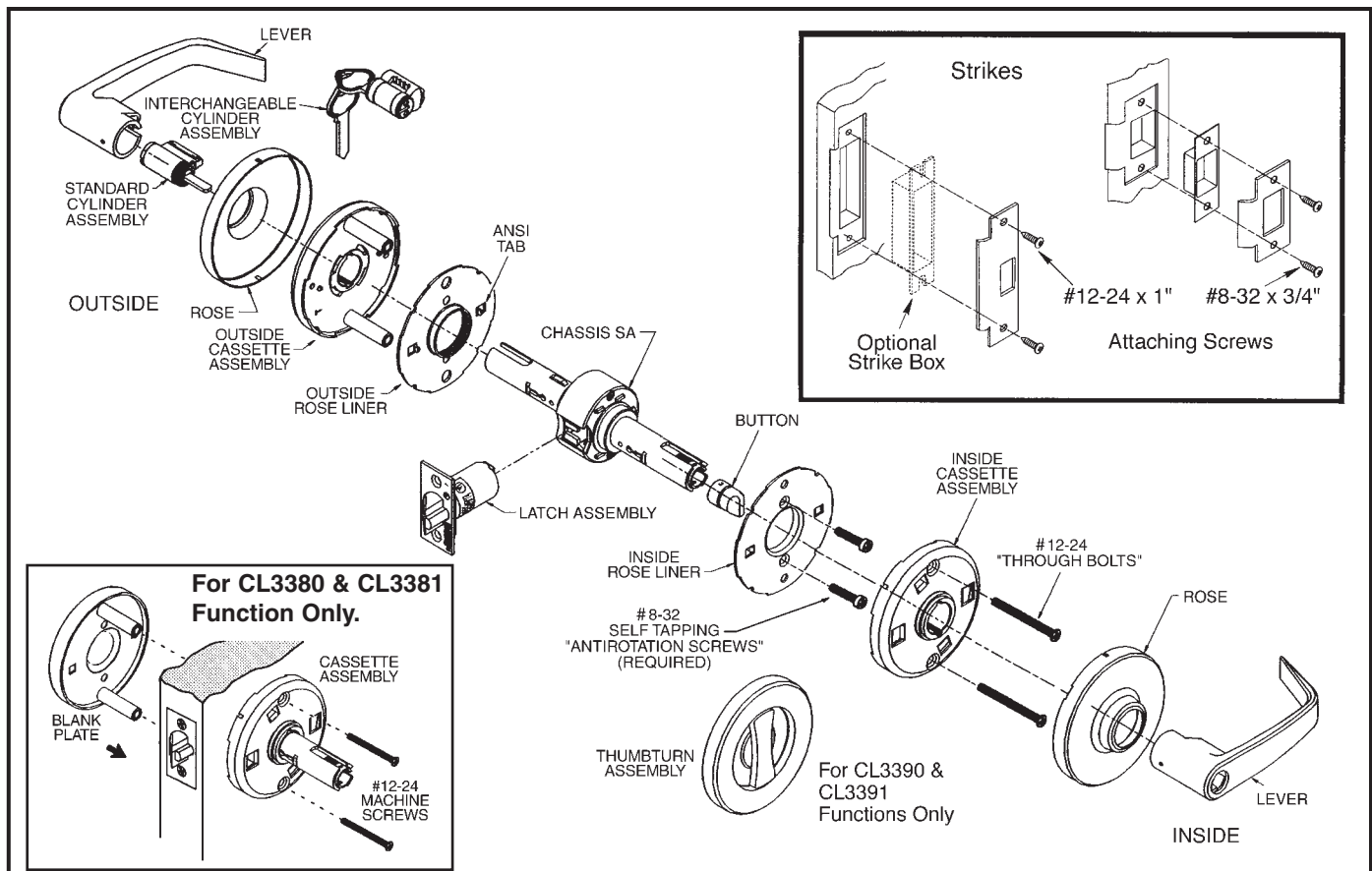
Grade I Key-In-Lever
Cylindrical Lockset
CL3300 Series



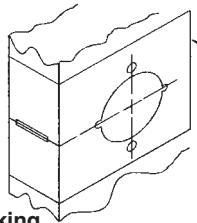
Attention Installer

Please read these instructions carefully to prevent missing important steps, including the sections on antirotation screws and through bolting (Section 7).
Please note: Improper installation may result in damage to the lock and void the factory warranty.

IMPORTANT: The accuracy of the door preparation is critical for the proper functioning and security of this lever handle lock. Misalignment can cause premature wear and a lessening of security.



1 Mark door.
Locate and mark horizontal center line at desired height above floor. Fold template over edge of door, centering on horizontal line. Mark centers of holes at proper backset. Mark both sides of the door.



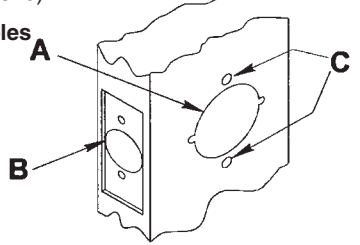
Note:
Be sure to verify backset before marking and drilling door.

2 Drill door.

A. 2-1/8" (54mm) hole thru door. Cut ANSI tab notches as shown on template (except CL3350 and CL3370).

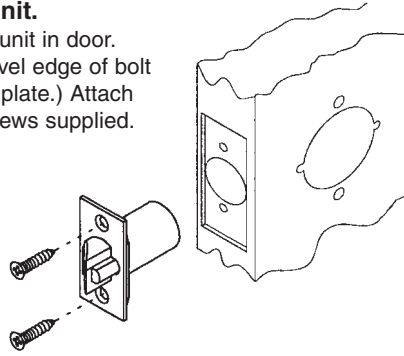
B. Drill 1" (25mm) hole in edge of door. Cut out for latch front 5/32" (4mm) deep. 1-1/8" (29mm) wide x 2-1/4" (57mm) high. Check latch unit for proper width front and square or round corners (except CL3350 and CL3370).

Caution:
To avoid splintering wood doors, drill holes from both sides.



3 Install latch unit.

Insert latch unit in door. (Be sure bevel edge of bolt faces strike plate.) Attach with two screws supplied.



4 Remove levers and inside cassette assembly.

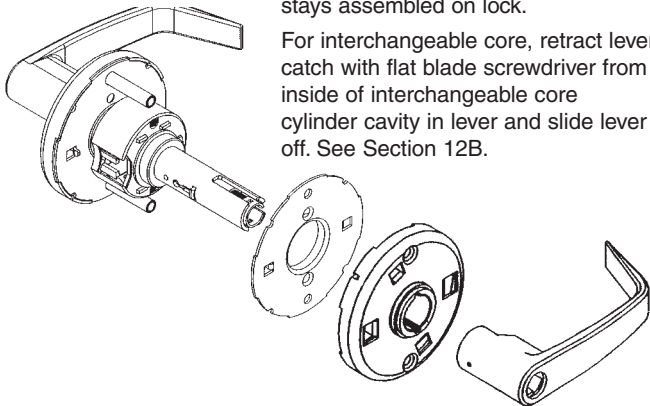
Remove both lever handles. Depress lever catch by inserting release tool into lever shank hole. Slide lever off.

Note: For cylinder functions see Section 12, "To remove cylinder lever."

- A. For levers with button. While depressing button, insert release tool into lever shank hole and depress lever catch. Slide lever off.
- B. Remove inside cassette assembly from lock by depressing lever catch with release tool or flat blade screw driver.

Outside cassette assembly stays assembled on lock.

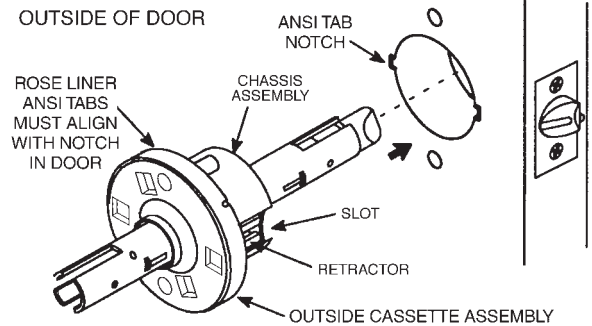
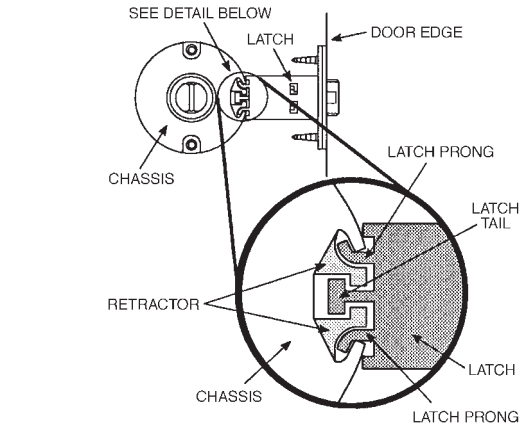
For interchangeable core, retract lever catch with flat blade screwdriver from inside of interchangeable core cylinder cavity in lever and slide lever off. See Section 12B.



6 Install chassis.

- A. Make sure that latch retractor slot in chassis assembly faces front edge of door.
- B. From outside, insert assembly into cross bore hole. Be sure that the chassis assembly engages latch prongs and latch tail engages retractor as shown. Rose liner tabs must fit into notches in door.

IMPORTANT: Chassis assembly must be positioned in center of door.

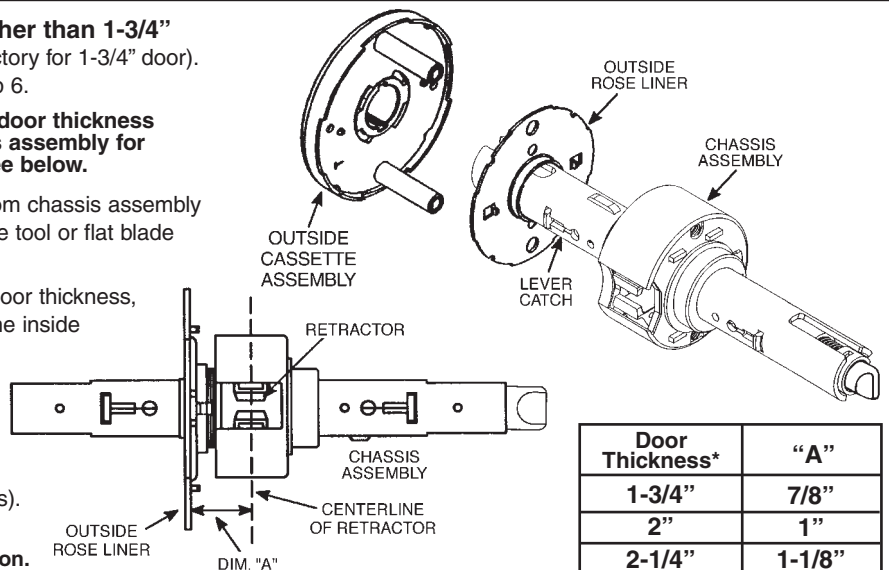


5 Adjust lock to door thickness if other than 1-3/4" (44mm) doors*. (Lock pre-set from factory for 1-3/4" door). If no adjustment needed, proceed to step 6.

Note: Lockset requires adjustment if door thickness is not exactly 1-3/4". To adjust chassis assembly for door thicknesses other than 1-3/4", see below.

- A. Detach outside cassette assembly from chassis assembly by depressing lever catch with release tool or flat blade screwdriver. Slide cassette off.
- B. Rotate rose liner to adjust lock to fit door thickness, so that the distance (Dim. "A") from the inside of the liner to the centerline of the retractor is one half of the thickness of the door (see chart).
- C. Re-assemble outside cassette assembly onto chassis assembly (except CL3380 and CL3381 functions).

***Note: For doors more than 2", verify lock package is labeled with "D214" option.**



| Door Thickness* | "A" |
|-----------------|--------|
| 1-3/4" | 7/8" |
| 2" | 1" |
| 2-1/4" | 1-1/8" |

7A Install antirotation screws, rose liner, blank plate and housing for all functions (except CL3390 and CL3391).

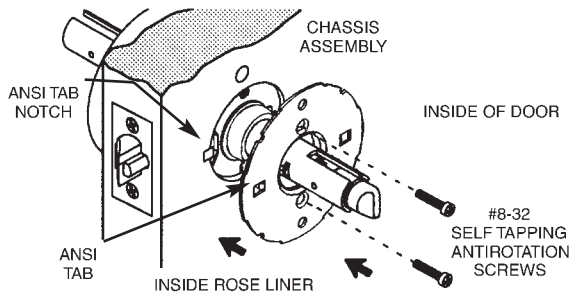
For CL3380 and CL3381 function.

A. Fasten two #8-32 self tapping anti-rotation screws through blank rose plate. Tighten screws securely.

For all other functions.

A. Position inside rose liner toward door as shown and attach onto chassis assembly. Make sure that rose liner ANSI tabs fit horizontally into slots notched in door.

B. Insert two #8-32 self tapping antirotation screws into chassis assembly and tighten hand tight to prevent rose liner from rotating. **Do not overtighten.**



IMPORTANT:

#8-32 Antirotation screws are required for stability. They must be installed for lock to function properly, and to maintain Warranty.

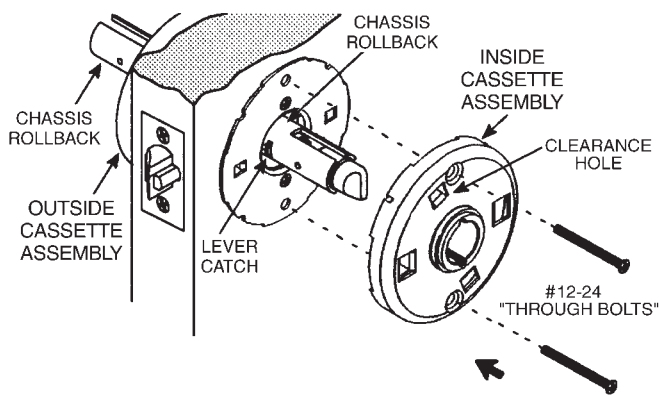
Install Inside Cassette Assembly

For locksets with button:

Depress button and hold in vertical position while sliding cassette assembly over lever catch.

For all locksets:

Attach inside cassette assembly to door. Fasten two #12-24 machine screws through clearance hole in housing. Tighten screws securely.



IMPORTANT:

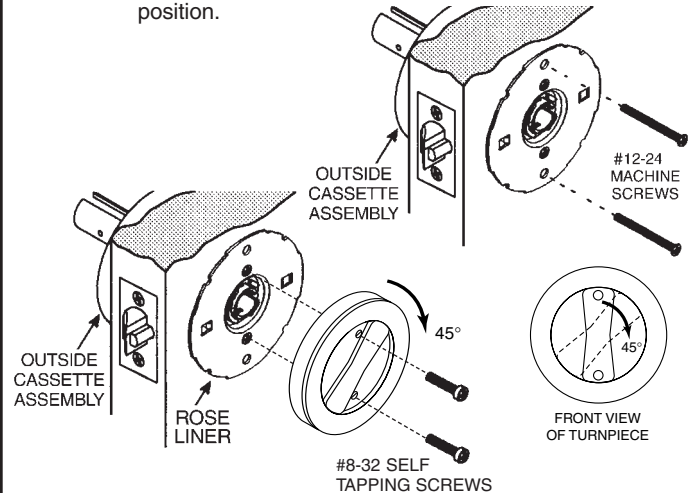
#12-24 Through bolts are required for strength and security of lockset.

7B Install turnpiece and housing. CL3390 & CL3391 functions only.

A. Fasten two #12-24 machine screws through rose liner on turnpiece side of door into cassette assembly. Tighten screws securely.

B. Attach turnpiece to chassis assembly so that tab on backside of turnpiece fits into slot in chassis assembly.

C. Rotate & hold turnpiece at 45° from vertical position to expose screw holes. Fasten two #8-32 self tapping screws through turnpiece into holes in flange. Tighten screws securely. Turnpiece should return to original position.



8 **TEST OPERATION:** Rotate chassis rollbacks to see that latchbolt moves freely.

DO NOT FORCE.

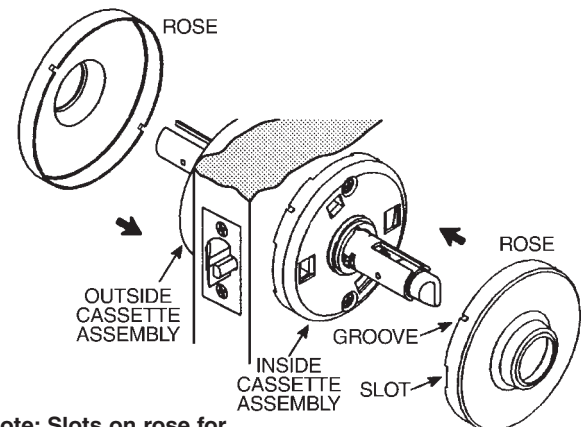
If lockset does not operate properly, remove lockset from door and check door preparation. See Step 6 to re-install lockset.

9 **Attach roses.**

A. Position roses over housings.

B. Align two grooves on rose sidewalls with two grooves on cassette assembly sidewalls.

C. Press roses firmly onto housings so that grooves snap into notches.



Note: Slots on rose for removal with flat blade screwdriver should be oriented toward edge of door.

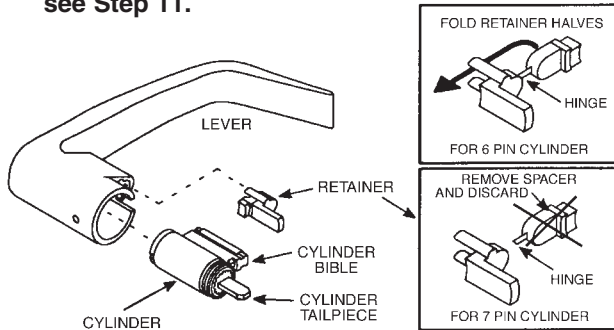
10 Install cylinder.

Make sure lock is unlocked.

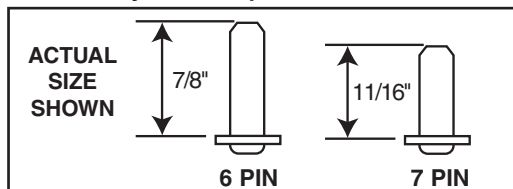
Note: If no cylinder is to be installed, proceed to Step 11.

- A. Make sure cylinder tailpiece is aligned in same direction as cylinder bible. Slide cylinder all the way into lever.
 - **For 6-pin cylinder:** Fold retainer at hinge and press fit retainer halves together as shown.
 - **For 7-pin cylinder:** Break retainer at hinge and discard spacer section. Also remove black cylinder spacer from inside of chassis rollback for clearance.
 - **For interchangeable core cylinders:** Install cylinder (Step 13) after installing lever.
- B. **For all cylinders:** Align and position retainer in lever shank with prongs facing toward cylinder. Press cylinder retainer firmly into lever shank securing cylinder.

Note: To replace cylinder and cylinder lever, see Step 11.



Standard Cylinder Tailpieces



11 Install levers.

The lockset must be in the unlocked state when installing levers.

For locksets with button:

Depress lever catch with release tool or flat blade screwdriver while depressing button in vertical position and slide lever on.

For standard cylinder lockset functions:

Insert key and rotate 45°. Depress lever catch with release tool or flat blade screwdriver and push lever onto chassis while keeping key at 45° position.

For CL3352 Intruder Function:

Install lever with "LOCK" text on inside of door.

For interchangeable core cylinder functions:

Slide lever assembly onto chassis up to lever catch. Depress lever catch and push lever assembly until lever catch is engaged.

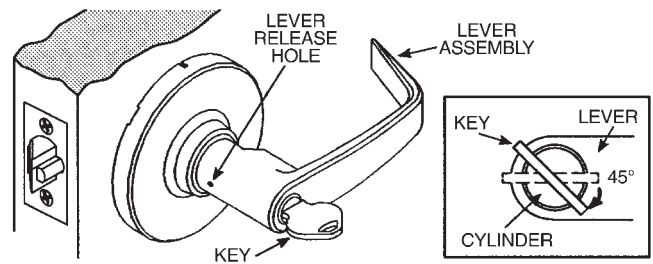
For all other lockset functions:

Depress lever catch with release tool or flat blade screwdriver and slide lever on.

Note: All levers require plastic insert shown in Step 10.

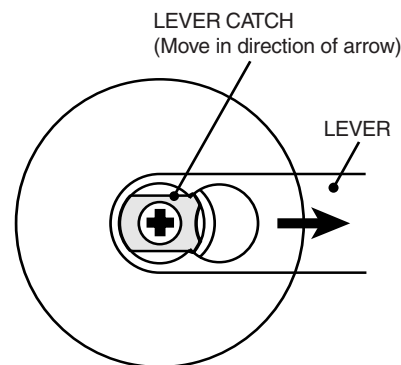
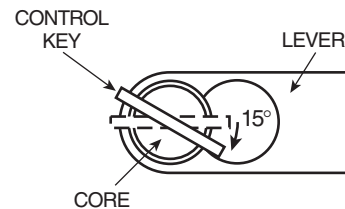
12A To remove cylinder lever. (except interchangeable core)

- A. Insert key and rotate 45° in either direction.
- B. Depress lever catch by inserting release tool into lever release hole.
- C. Slide lever off from lock. (Also applies to inside lever of double cylinder functions).



12B To remove interchangeable core lever.

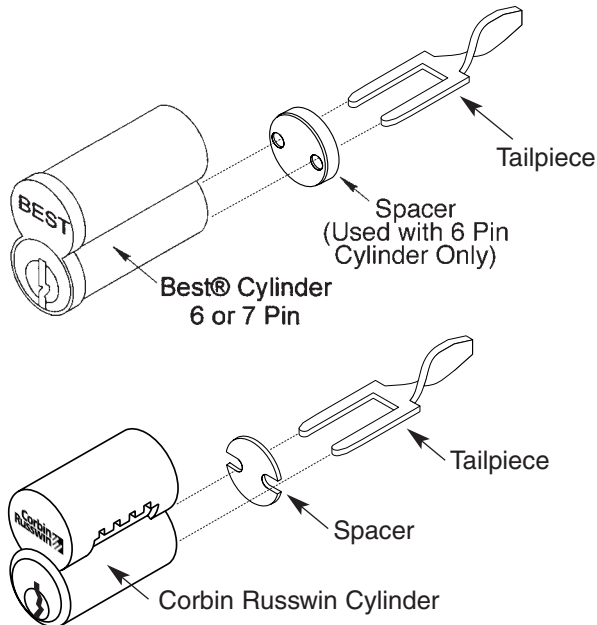
- A. Insert key marked CONTROL and turn approximately 15° clockwise.
- B. Pull core and driver completely out of lever.
- C. Using flat blade screwdriver, in cylinder cavity, pull back lever catch while pulling lever off.



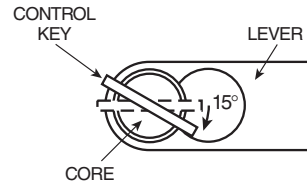
Note: Interchangeable core levers do not have a release hole.

13A To Install Corbin Russwin and Best® Interchangeable Core.

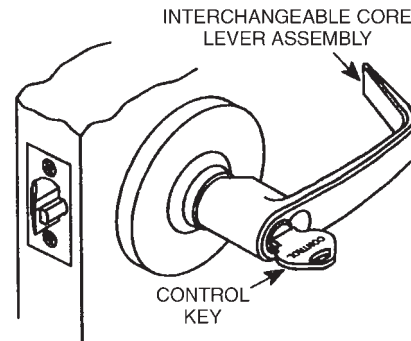
- Slip security disk onto prongs of throw member and insert throw member into two holes in back of core.



- 14**
- Insert key marked CONTROL and turn cylinder approximately 15° clockwise.

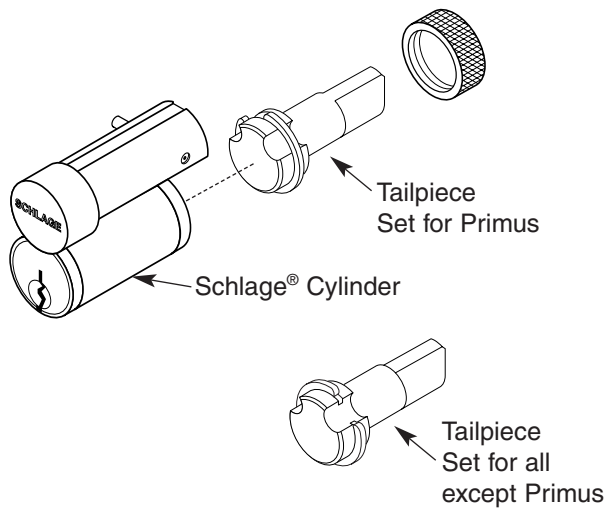


- Insert core into lever and return key to its original horizontal position locking core in place.
- Withdraw key. Test lockset for correct function with operating key.
- Control key has no further use in lockset installation and must be safeguarded for return to building management or security when installation is complete.



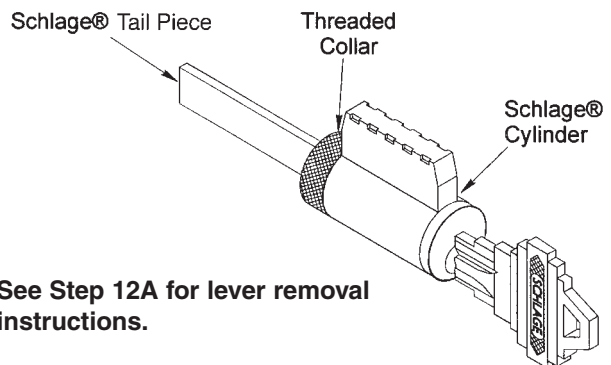
13B To Install Schlage® Interchangeable Core

- Remove key from cylinder.
- Unscrew threaded cap from end of cylinder (it will be necessary to depress the locking pin).
- Rotate clip to orientation to expose slot for standard Schlage or Schlage Primus cylinder.
- Place tailpiece under cap locking pin in open slot.
- Reverse Step 2 to reinstall cap.



15 Corbin Russwin conversion kit for Schlage® cylinders with CL3300 lockset.

1. Remove threaded collar and Schlage® tailpiece.
2. Install CL3300 tailpiece with threaded collar (adjust collar for proper end play of plug).



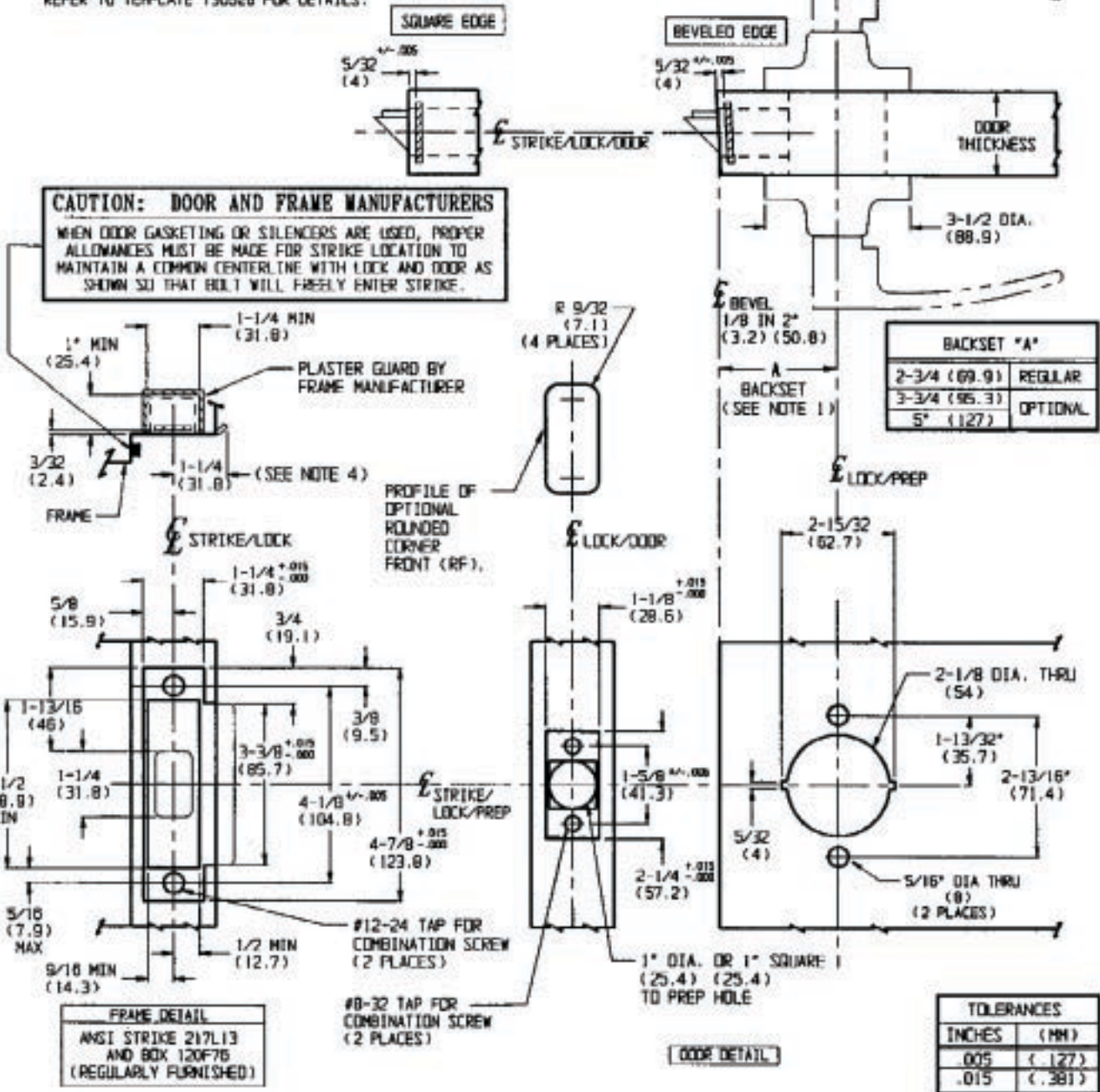
See Step 12A for lever removal instructions.

Door Manufacturer's Template

NOTES:

1. BACKSET IS MEASURED FROM CENTERLINE OF BEVEL WHICH IS CENTERPOINT OF DOOR THICKNESS.
2. DOOR PREP WITH 2-3/4" BACKSET MEETS ANSI STANDARDS A115.2 FOR STEEL STEEL DOORS AND A115.W2 FOR WOOD DOORS PLUS THROUGH BOLT HOLES SHOWN.
3. DIMENSIONS GIVEN IN INCHES AND (MM).
4. 1-1/4" STRIKE LIP SUITS FRAME FOR 1-3/4" THICK DOOR. LIP WILL VARY FOR OTHER DOOR THICKNESSES.
5. DOOR PREP WILL VARY FOR 3/4" LATCH ASSEMBLY. REFER TO TEMPLATE T30528 FOR DETAILS.

| TEMPLATE CROSS REFERENCE | |
|---------------------------------|----------|
| DESCRIPTION | TEMPLATE |
| CL3350 & CL3370 DUMMY TRIM | T30685 |
| S6819 OPTIONAL STRIKE | T30478 |
| NIG 3/4" LATCH | T30528 |
| S01F20 BARRETTED FRONT & STRIKE | T30640 |



CL3300 TROUBLESHOOTING GUIDE

| | SYMPTOM | POSSIBLE CAUSE | REMEDY | Instruction Sheet |
|-----------|---|---|--|--------------------------|
| 1 | The lockset doesn't seem to function properly when operated before installation. | Testing the lock this way is misleading because the door is a part of the structure of the lock. | Install the lock on door (in unlocked mode) before testing. | |
| 2 | The key can be forced past the stop in locks with a 6 pin standard cylinder. | Wrong tailpiece on cylinder. | Install correct CL3300 tailpiece on 6 pin cylinder. | 10 |
| 3 | The interchangeable core lever has no release hole. | The lever is released from inside the interchangeable core cavity. | Remove the cylinder with the control key and activate the catch from inside the lever. WARNING: DRILLING LEVER TO ACCESS LEVER CATCH VOIDS WARRANTY. | 14 |
| 4 | The levers are not at the correct angle, the latch is binding, or the lock is not staying secure. | Antirotation screws not installed, or ANSI tabs bent or cut off. | Remove inside lever, rose, and cassette to verify ANSI tabs and both #8-32 screws are in place. | 8A |
| 5 | The interchangeable core cylinder is hard to install. | Lever catch is not fully seated in slot in lever. | Verify that the lever is pushed all the way on, and catch is bottomed on on shoulder. WARNING: MODIFYING LEVER CATCH VOIDS WARRANTY. | 11 |
| 6 | The interchangeable core cylinder key is trapped but turns freely, and I cannot remove the lever. | The cylinder was installed in the lever with key rotated 180° out of phase before installing lever. | Drill out cylinder and replace. Follow instructions to install a new lever first, then the cylinder. WARNING: DRILLING LEVER TO ACCESS LEVER CATCH VOIDS WARRANTY. | 14 |
| 7 | The levers are binding on a recently installed lock. | Door improperly prepared for lock, or lock adjusted to wrong door thickness. | Verify door preparation matches supplied template, and lock is adjusted to correct door thickness. | 5 |
| 8 | The inside lever will not come off using the supplied tool. | The release catch is not moving enough. | The Push button must be depressed while pressing the catch to remove lever. | 4 |
| 9 | The lock isn't functioning smoothly, and the case doesn't seem to fit very well around the chassis. | The inside flange is damaged from overtightening the antirotation screws. | Do not exceed 19 in-lbs when tightening antirotation screws. | 8A |
| 10 | My standard cylinder CL3352 Intruder lockset doesn't seem to work the way it should. | The lock was possibly installed in the locked position. | Remove outside lever, use cylinder to unlock lock, and try again. If the lever still won't go on, turn key in the opposite direction while installing the lever. | 10, 11 |

For more information regarding Corbin Russwin Locksets,
Exit Devices, Door Controls and Key Systems, contact your
authorized Corbin Russwin Distributor or Sales Representative.



In U.S.:
Corbin Russwin Architectural Hardware
1902 Airport Road
Monroe, NC 28110
Phone 800-543-3658
Fax 800-447-6714
www.corbinrusswin.com

In Canada:
Yale-Corbin Canada Ltd.
6940 Edwards Boulevard
Mississauga, ONT L5T 2W2
Phone 800-461-3007
Fax 800-461-8989
www.yalecorbin.on.ca

The ASSA ABLOY Group is the world's leading manufacturer and supplier of locking solutions, dedicated to satisfying end-user needs for security, safety and convenience.

Corbin Russwin and Design® is a registered trademark of Corbin Russwin Inc. Other products brand names may be trademarks or registered trademarks of their respective owners and are mentioned for reference purposes only. These materials are protected under US copyright laws. All contents current at time of publication. Corbin Russwin, Inc. reserves the right to change availability of any item in this catalog, its design, construction, and/or its materials. Copyright© 2000, 2004 Corbin Russwin, Inc. All rights reserved.