

STANLEY
Security Solutions



**STANLEY
OMNILOCK**

ILLUSTRATED PARTS CATALOG

STANLEY
OMNILOCK

STANLEY OMNILOCK ILLUSTRATED PARTS CATALOG

CREDITS/COPYRIGHT

Copyright © 2009 Stanley Security Solutions, Inc. and Stanley Logistics, Inc. All rights reserved. Printed in the United States of America.

Information in this document is subject to change without notice and does not represent a commitment on the part of Stanley Security Solutions, Inc. The software described in this document are furnished under a license agreement or nondisclosure agreement.

This publication is intended to be an accurate description and set of instructions pertaining to its subject matter. However, as with any publication of this complexity, errors or omissions are possible. Please call your BEST[®] distributor or Stanley Security Solutions, Inc., Best Access Systems at (317) 849-2250 if you see any errors or have any questions. No part of this manual and/or databases may be reproduced or transmitted in any form or by any means, electronic or mechanical, including photocopying, recording, or information storage and retrieval systems, for any purpose, without the express written permission of Stanley Security Solutions, Inc.

This document is distributed as is, without warranty of any kind, either express or implied, respecting the contents of this book, including but not limited to implied warranties for the publication's quality, performance, merchantability, or fitness for any particular purpose. Neither Stanley Security Solutions, Inc., nor its dealers or distributors shall be liable to the user or any other person or entity with respect to any liability, loss, or damage caused or alleged to be caused directly or indirectly by this publication.

Sargent is a registered trademark of Sargent Manufacturing Co.

TORX is a registered trademark of the Camcar Division of Textron.

Von Duprin is a registered trademark of Von Duprin, Inc.

Written and designed by Stanley Security Solutions, Inc. and Avalon Group, Inc., Indianapolis, Indiana.

T83313 Rev - ER7991-6 November 2009

CONTENTS

FIGURES 1–VII

GETTING STARTED 1–1

- Introduction 1-1
- Product overview 1-3
 - Mortise lock overview 1-3
 - Cylindrical lock overview 1-4
 - Wall mount system overview 1-5
 - Exit hardware trim overview 1-6
- Related service manuals 1-7
- Technical support 1-7
 - Support services 1-7
 - Telephone technical support 1-7

STANDARD ESCUTCHEON ASSEMBLIES 2–1

- Keypad reader escutcheon assembly 2-2
- Magnetic stripe reader 2-5
- Proximity reader 2-8
- Dual validation reader (keypad and magnetic stripe) 2-11
- Dual validation reader (keypad and proximity) 2-14
- Weatherized escutcheon components 2-17
- Extreme weatherized escutcheon components 2-18

MORTISE COMPONENTS 3-1

- Outside trim components 3-2
- Inside trim components 3-3
- Spindles 3-4
- Mortise cases by function and option 3-5
- Mortise case faceplates 3-6
- Strike boxes and strike plates 3-7
- Cylinder components 3-8

CYLINDRICAL COMPONENTS 4-1

- Standard trim components 4-2
- Standard levers 4-3
- Cylindrical chassis 4-4
- Latches 4-5
- Strike boxes and strike plates 4-6

EXIT DEVICE TRIM COMPONENTS 5-1

- Keypad reader escutcheon assembly 5-2
- Magnetic stripe reader 5-4
- Proximity reader 5-6
- Dual validation reader (keypad and magnetic stripe) 5-8
- Dual validation reader (keypad and proximity) 5-10
- Weatherized escutcheon components 5-12
- Adapter plate kits 5-13
- Tailpiece kits 5-14
- Outside levers 5-15
- Other components 5-16

WALL MOUNT SYSTEM COMPONENTS 6-1

- Keypad reader escutcheon assembly 6-2
- Dual validation reader (keypad and magnetic stripe) 6-4
- Dual validation reader (keypad and proximity) 6-6
- Weatherized components 6-8
- Extreme weatherized escutcheon components 6-9
- 5E cylinder components 6-11

OTHER COMPONENTS 7-1

Programming devices, readers, and access cards 7-2

2000 Series management software 7-2

WAMS management software 7-2

Card readers and encoders 7-2

Wireless components 7-3

Single door controller 7-3

Portal gateway 7-3

Power-over-ethernet devices 7-4

Transformer 7-4

Modem 7-5

Antenna kits 7-6

Wireless conversion kit 7-7

Battery packs 7-7

Tools 7-7

Site survey kit and beacons 7-8

GLOSSARY A-1

FIGURES

GETTING STARTED

- Mortise lock overview diagram 1-3
- Cylindrical lock overview diagram 1-4
- Wall mount system overview diagram 1-5
- Exit hardware trim overview diagram 1-6

STANDARD ESCUTCHEON ASSEMBLIES

- Keypad reader escutcheon assembly (WAMS mortise shown) 2-2
- Magnetic stripe reader escutcheon assembly (WAMS mortise shown) 2-5
- Proximity reader escutcheon assembly (WAMS mortise shown) 2-8
- Dual validation reader (keypad and magnetic stripe) escutcheon assembly (WAMS mortise shown) 2-11
- Dual validation reader-keypad and proximity escutcheon assembly (WAMS mortise shown) 2-14
- Weatherized escutcheon components 2-17
- Extreme weatherized escutcheon components 2-18

MORTISE COMPONENTS

- Outside mortise trim 3-2
- Inside mortise trim 3-3
- Spindles 3-4
- Mortise case assembly 3-5
- Mortise case faceplates 3-6
- Mortise strike boxes and strike plates 3-7
- Mortise cylinder components 3-8

CYLINDRICAL COMPONENTS

- Standard trim exploded view 4-2
- Standard cylindrical levers 4-3
- Cylindrical chassis 4-4
- Cylindrical latches 4-5
- Cylindrical strike boxes and strike plates 4-6

EXIT DEVICE TRIM COMPONENTS

- Keypad reader escutcheon assembly (WAMS shown) 5-2
- Magnetic stripe reader escutcheon assembly (WAMS shown) 5-4
- Proximity reader escutcheon assembly (WAMS shown) 5-6
- Dual validation reader (keypad and magnetic stripe) escutcheon assembly (WAMS shown) 5-8
- Dual validation reader (keypad and proximity) escutcheon assembly (WAMS shown) 5-10
- Weatherized escutcheon components 5-12
- Adapter plates for exit device hardware trim 5-13
- Tailpiece kit for exit device hardware trim 5-14
- Outside levers for exit device hardware trim 5-15
- Other components for exit device hardware trim 5-16

WALL MOUNT SYSTEM COMPONENTS

- Keypad reader escutcheon assembly (500 series shown) 6-2
- Dual validation reader (keypad and magnetic stripe) escutcheon assembly (WAMS shown) 6-4
- Dual validation reader (keypad and proximity) escutcheon assembly (WAMS shown) 6-6
- Weatherized components 6-8
- Extreme weatherized escutcheon components 6-9
- 5E cylinder components for wall mount systems 6-11

OTHER COMPONENTS

Card encoders	7-2
Single door controller	7-3
Portal gateway	7-3
Power-over-ethernet devices	7-4
Transformer	7-4
Modem	7-5
Antenna kits	7-6
Battery pack	7-7
Tools	7-7
Site survey kit and beacons components	7-8

GLOSSARY

1

GETTING STARTED

INTRODUCTION

The *Stanley OMNILOCK Illustrated Parts Catalog* contains essential information to help you maintain your standalone OMNILOCK Wireless Access Management System (WAMS), OMNILOCK 2000 Series, and OMNILOCK 500 Series products. Use this manual to identify the part numbers you need to order replacement and upgrade components.

OMNILOCK WAMS provides the convenience of a wireless access control system. WAMS Locks support up to 65,000 user codes per door, track up to 89,000 events, and are programmed using a PC-based management system. The WAMS product family includes:

- 45HOM Mortise Lock with keypad reader, magnetic stripe reader, dual validation magnetic stripe and keypad reader, proximity reader, or dual validation proximity and keypad reader
- 93KOM-95KOM Cylindrical Lock with the same reader options available for WAMS Mortise Locks
- OMWMS Wall Mount System with dual validation magnetic stripe and keypad reader or dual validation proximity and keypad reader
- QAXOM Exit Device Trim with the same reader options available for WAMS Mortise Locks.

OMNILOCK 2000 Series Locks support up to 2,000 user codes per door, track up to 5,000 events, and are programmed using a PDA-based management system. The 2000 Series includes:

- 45HOM Mortise Lock with keypad reader, magnetic stripe reader, dual validation magnetic stripe and keypad reader, proximity reader, or dual validation proximity and keypad reader
- 93KOM-95KOM Cylindrical Lock with the same reader options available for 2000 Series Mortise Locks
- OMWMS Wall Mount System with dual validation magnetic stripe and keypad reader or dual validation proximity and keypad reader
- QAXOM Exit Device Trim with the same reader options available for 2000 Series Mortise Locks.

OMNILOCK 500 Series Locks support up to 500 user codes per door, track up to 750 events, and are programmed using a portable, wireless printer device. The 500 Series includes:

- 45HOM Mortise Lock with keypad reader
- 93KOM-95KOM Cylindrical Lock with keypad reader
- OMWMS Wall Mount System with keypad reader
- OM500 Exit Device Trim with keypad reader.

Reader options	Series		
	OMNILOCK 500	OMNILOCK 2000	OMNILOCK WAMS
Keypad	✓	✓	✓
Magnetic stripe card		✓	✓
Proximity		✓	✓
Dual magnetic stripe and keypad		✓	✓
Dual proximity and keypad		✓	✓

PRODUCT OVERVIEW

Mortise lock overview The diagram below shows an exploded view of the components of an OMNILOCK Mortise Lock, indicating their orientation to the door.

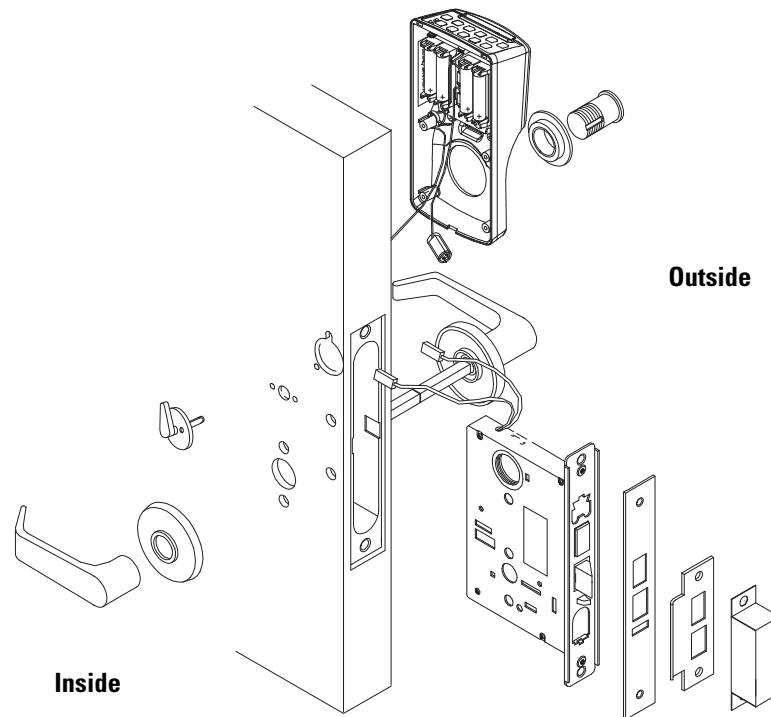


Figure 1.1 Mortise lock overview diagram

Cylindrical lock overview

The diagram below shows an exploded view of the components of an OMNILOCK Cylindrical Lock, indicating their orientation to the door.

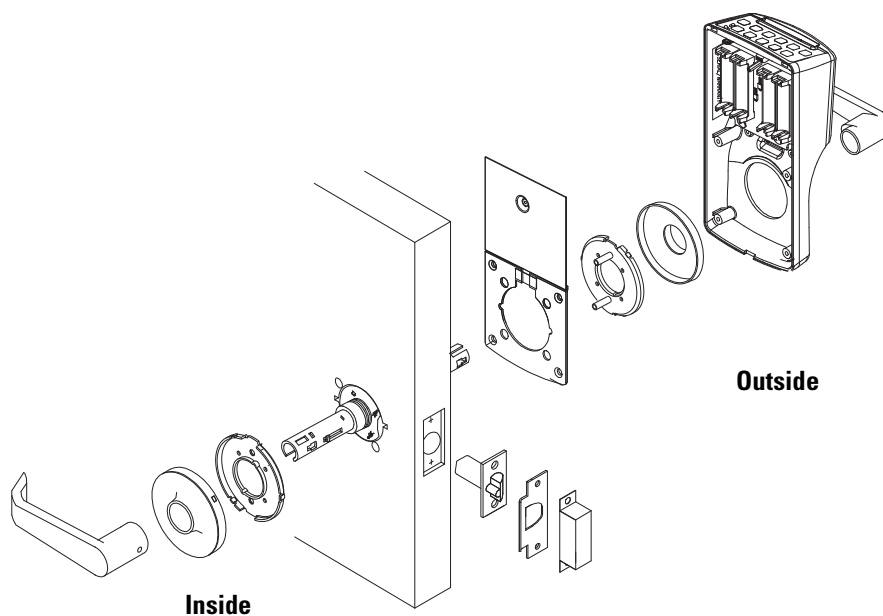


Figure 1.2 Cylindrical lock overview diagram

**Wall mount
system
overview**

The diagram below shows an exploded view of the components of an OMNILOCK Wall Mount System.

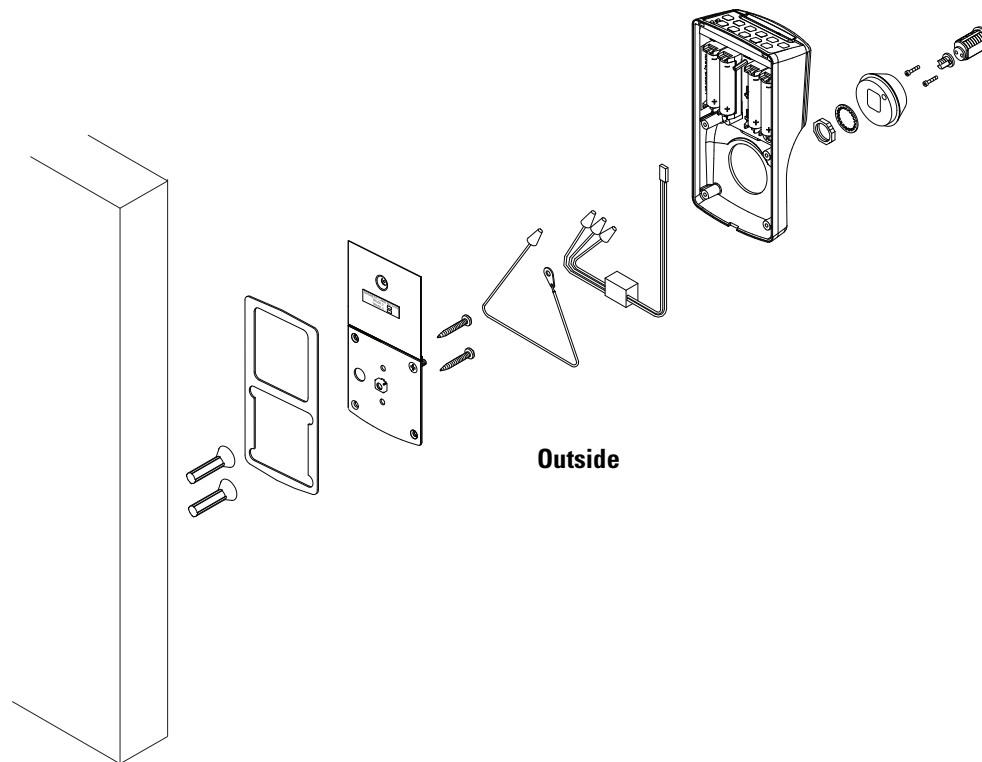


Figure 1.3 Wall mount system overview diagram

Exit hardware trim overview

The diagram below shows an exploded view of the components of an OMNILOCK Exit Hardware Trim application.

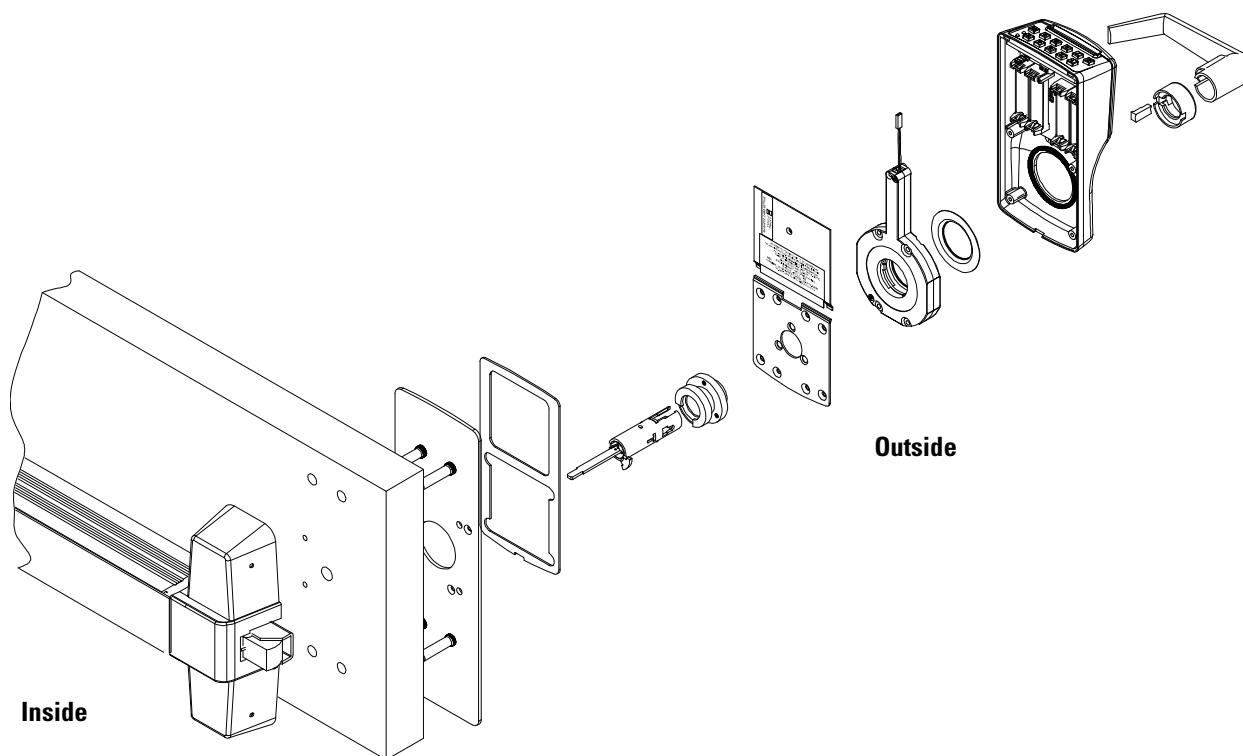


Figure 1.4 Exit hardware trim overview diagram

RELATED SERVICE MANUALS

The service manuals referred to in this manual also can be ordered separately:

Document Title	Doc. No.
<i>40H Series Service Manual</i>	T81602
<i>9K Series Service Manual</i>	T56082

TECHNICAL SUPPORT

Support services

When you need a part number for a component in an OMNILOCK Lock, Wall Mount System, or Exit Hardware Trim application, your first resource for help is the *Stanley OMNILOCK Illustrated Parts Catalog*. If you cannot find the part number you need, contact your local OMNILOCK Representative.

Telephone technical support

A factory-trained Certified Product Specialist (CPS) is available in your area whenever you need help. Before you call, however, please make sure that the product is in your immediate vicinity, and that you are prepared to give the following information:

- what happened and what you were doing when the problem arose
- what you have done so far to correct the problem.

Stanley Security Solutions Representatives provide telephone technical support for all OMNILOCK products. You may locate the Representative nearest you by calling 1-800-392-5209 Monday through Friday, between 8:00 a.m. and 5:00 p.m. eastern standard time; or visit the web page www.OMNILOCK.com.

2

STANDARD ESCUTCHEON ASSEMBLIES

This chapter provides exploded diagrams of the escutcheon assemblies for standard OMNILOCK Mortise and Cylindrical locks. Weatherized and extreme weatherized escutcheon components are described. This chapter also includes part numbers for all field-serviceable parts.

KEYPAD READER ESCUTCHEON ASSEMBLY Keypad reader escutcheon assembly exploded view

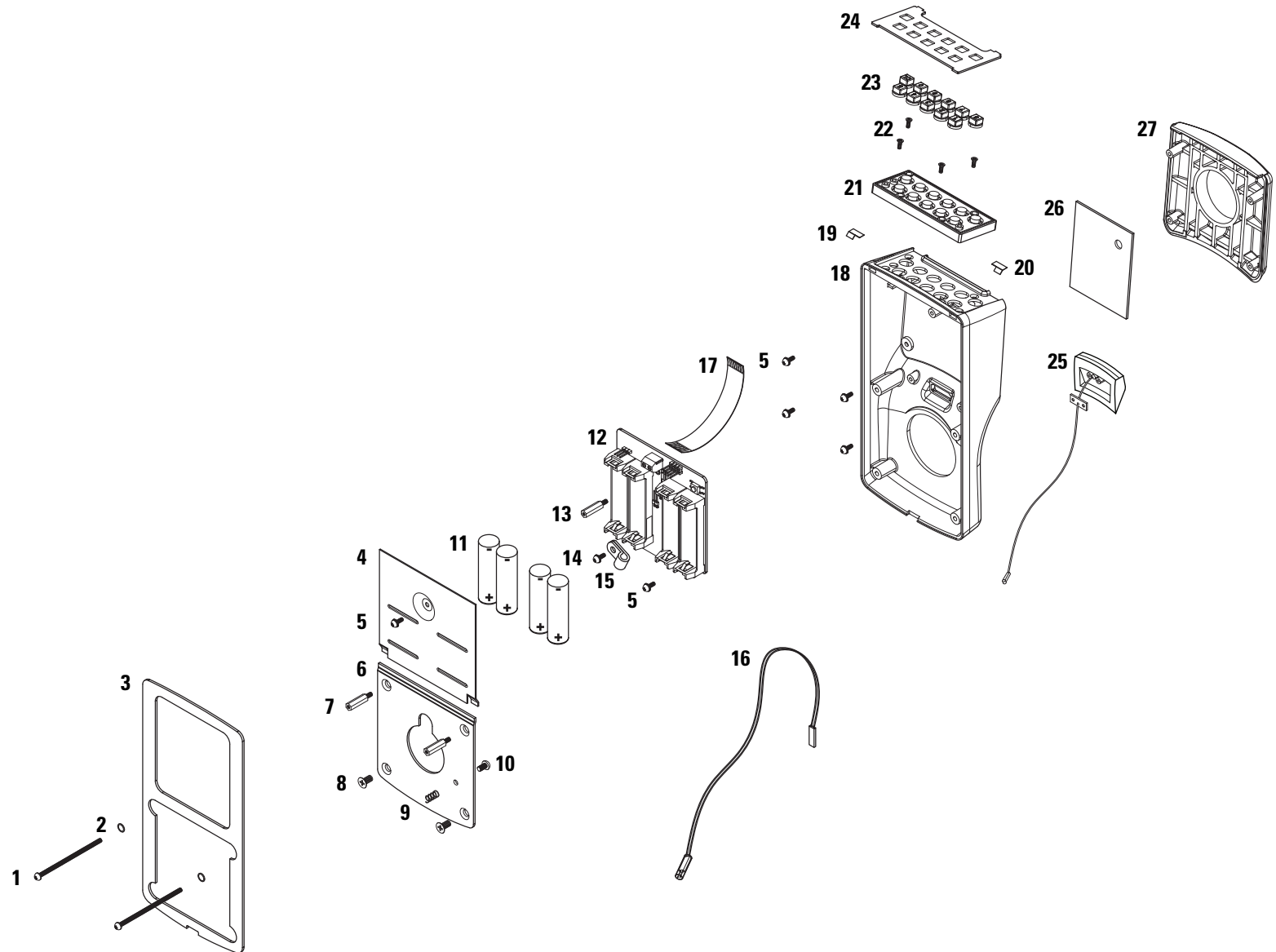


Figure 2.1 Keypad reader escutcheon assembly (WAMS mortise shown)

Keypad reader escutcheon assembly parts list

Refer to [Figure 2.1](#) and the table below to find the part you need.

Item	Qty.	WAMS Part No.	2000 Series Part No.	500 Series Part No.	Description
1	2	A82573	A82573	A82573	Standard door mounting screw (1-1/4" TORX® T15 button head) (mortise locks only)
not shown	2	A82574	A82574	A82574	Thick door mounting screw (1-1/2" TORX® T15 button head) (mortise locks only)
2	2	A82212	A82212	A82212	Flat nylon washer (mortise locks only)
3	1	B82267	B82267	B82267	Housing gasket
4	1	A82271	A82271	A82271	Battery cover ^a
5	6 ^b	A82245	A82245	A82245	Escutcheon assembly screw (#4-40 × 1/4" Phillips pan head)
not shown	4	—	—	A82288	Cover mounting screw (Phillips pan head)
6	1	B82296	B82296	B82296	Mortise mounting plate
not shown	1	B82277	B82277	B82277	Cylindrical mounting plate
7	2	A82300	A82300	A82300	Mounting plate standoff (mortise locks only)
8	2 ^c	B82272	B82272	B82272	Mounting plate screw (#8-32 × 3/8" Phillips flat head)
9	1	A82299	A82299	A82299	Grounding spring
10	1	A82309	A82309	A82309	Grounding spring screw (#6-32 × 1/4" Phillips pan head)
11	1	A82265	A82265	A82265	Set of 4 batteries (AA alkaline, 1.5V) ^d
12	1	3064470	3061490	3108402	Circuit board ^e
13	1	A82086	A82086	A82086	Battery cover standoff
14	1	A82786	A82786	A82786	Cable clamp mounting screw (mortise locks only)
15	1	A82554	A82554	A82554	Cable clamp (mortise locks only)
16	1	B82852	B82852	B82852	Motor wire harness
17	1	A82249	A82249	A82249	Reader cable assembly
not shown	1	A82262	A82262	A82262	Cylindrical rose gasket
18	1	B82215	B82215	B82215	Reader housing ^f
19	1	A82202	A82202	A82202	Left bezel spring
20	1	A82201	A82201	A82201	Right bezel spring
21	1	B82546	B82546	B82547	Keypad assembly
22	4	A82206	A82206	A82206	Keyboard mounting screw (#4-40 × 1/4" Phillips flat head)
23	1	B82242	B82242	B82242	Keypad key set ^f

		WAMS	2000 Series	500 Series	
Item	Qty.	Part No.	Part No.	Part No.	Description
24	1	B82229	B82229	B82230	Keypad bezel
not shown	1	—	B82243	B82243	IR window
25	1	306455 ⁴	—	—	Antenna assembly
26	1	A82291	A82291	A82291	Reader cover gasket
27	1	B82221	B82221	B82221	Front cover ^f

- a. For the part number for extreme weatherized battery covers, see *Extreme weatherized escutcheon components* on page 2-18.
- b. The 500 Series keypad reader escutcheon assembly uses two A82245 screws, cylindrical applications use seven A82245 screws.
- c. The cylindrical mounting plate uses four B82272 screws.
- d. For the part numbers for weatherized batteries, see *Weatherized escutcheon components* on page 2-17. For best performance, use Duracell or Energizer batteries.
- e. For the part numbers for weatherized circuit boards, see *Weatherized escutcheon components* on page 2-17. For part numbers for extreme weatherized circuit boards, see *Extreme weatherized escutcheon components* on page 2-18.
- f. Specify finish (gray, black, or satin chrome).

MAGNETIC STRIPE READER

Magnetic stripe reader escutcheon assembly exploded view

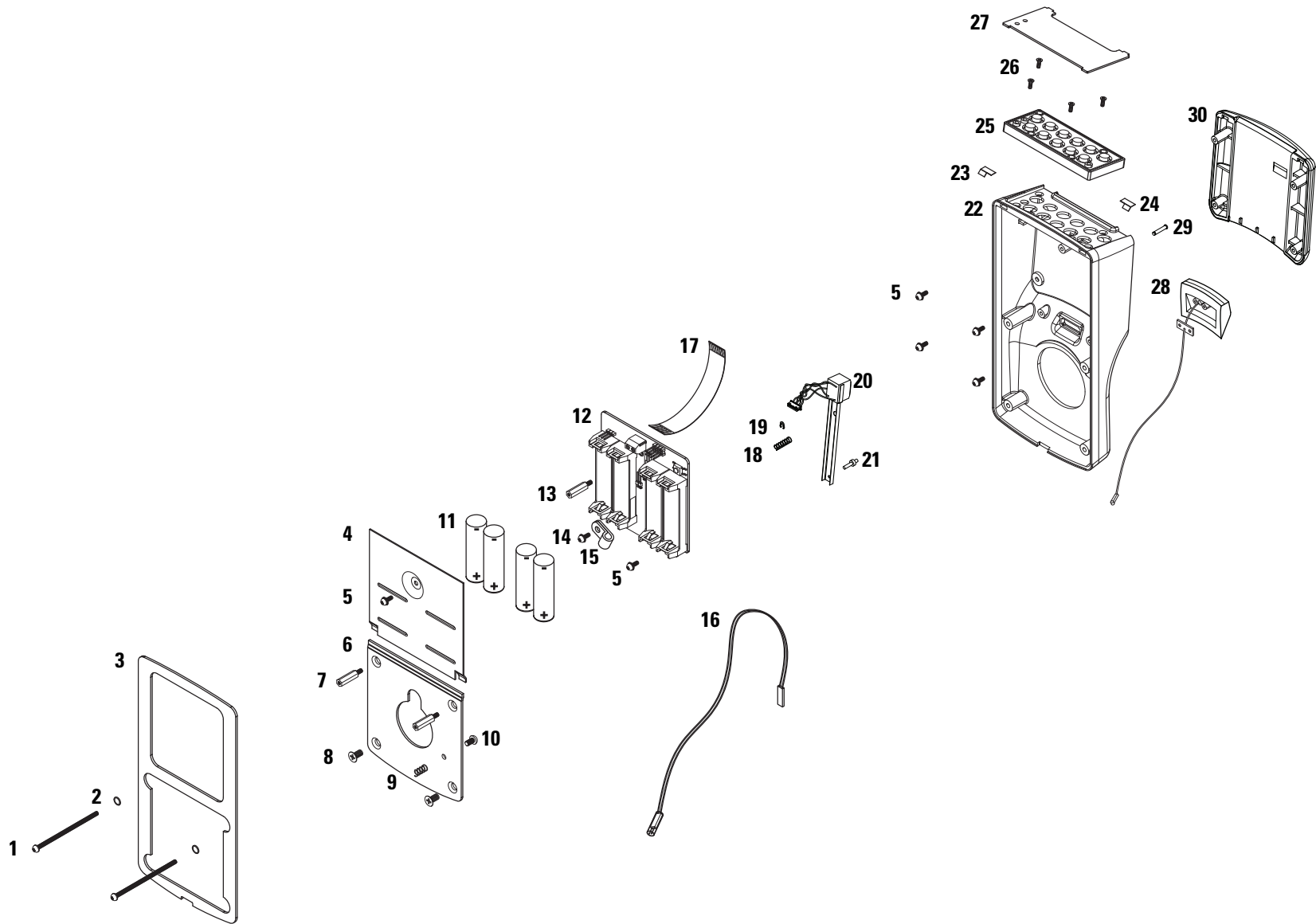


Figure 2.2 Magnetic stripe reader escutcheon assembly (WAMS mortise shown)

**Magnetic stripe
reader escutcheon
assembly parts list**

Refer to [Figure 2.2](#) and the table below to find the part you need.

Item	Qty.	WAMS Part No.	2000 Series Part No.	Description
1	2	A82573	A82573	Standard door mounting screw (1-1/4" TORX® T15 button head) (mortise locks only)
not shown	2	A82574	A82574	Thick door mounting screw (1-1/2" TORX® T15 button head) (mortise locks only)
2	2	A82212	A82212	Flat nylon washer (mortise locks only)
3	1	B82267	B82267	Housing gasket
4	1	A82271	A82271	Battery cover ^a
5	6 ^b	A82245	A82245	Escutcheon assembly screw (#4-40 × 1/4" Phillips pan head)
6	1	B82296	B82296	Mortise mounting plate
not shown	1	B82277	B82277	Cylindrical mounting plate
7	2	A82300	A82300	Mounting plate standoff
8	2 ^c	B82272	B82272	Mounting plate screw (#8-32 × 3/8" Phillips flat head)
9	1	A82299	A82299	Grounding spring
10	1	A82309	A82309	Grounding spring screw (#6-32 × 1/4" Phillips pan head)
11	1	A82265	A82265	Set of 4 batteries (AA alkaline, 1.5V) ^d
12	1	3064470	3061490	Circuit board ^e
13	1	A82086	A82086	Battery cover standoff
14	1	A82786	A82786	Cable clamp mounting screw (mortise locks only)
15	1	A82554	A82554	Cable clamp (mortise locks only)
16	1	B82852	B82852	Motor wire harness
17	1	A82249	A82249	Reader cable assembly
18	1	A82210	A82210	Magnetic head spring
19	1	A82205	A82205	Magnetic head retaining ring
20	1	B82228	B82228	Magnetic head assembly
21	1	A82207	A82207	Magnetic head pivot pin
22	1	B82215	B82215	Reader housing ^f
23	1	A82202	A82202	Left bezel spring
24	1	A82201	A82201	Right bezel spring
25	1	B82546	B82546	Keypad assembly
26	4	A82206	A82206	Keyboard mounting screw (#4-40 × 1/4" Phillips flat head)
27	1	B82211	B82211	Bezel
28	1	3064554	—	Antenna assembly

Item	Qty.	WAMS	2000 Series	Description
		Part No.	Part No.	
not shown	1	—	B82243	IR window
29	1	A82208	A82208	Magnetic head pin
30	1	B82222	B82222	Front cover ^f

- For the part number for extreme weatherized battery covers, see *Extreme weatherized escutcheon components* on page 2-18.
- Cylindrical applications use seven A82245 screws.
- The cylindrical mounting plate uses four B82272 screws.
- For the part numbers for weatherized batteries, see *Weatherized escutcheon components* on page 2-17. For best performance, use Duracell or Energizer batteries.
- For the part numbers for weatherized circuit boards, see *Weatherized escutcheon components* on page 2-17. For part numbers for extreme weatherized circuit boards, see *Extreme weatherized escutcheon components* on page 2-18.
- Specify finish (gray, black, or satin chrome).

PROXIMITY READER

Proximity reader escutcheon assembly exploded view

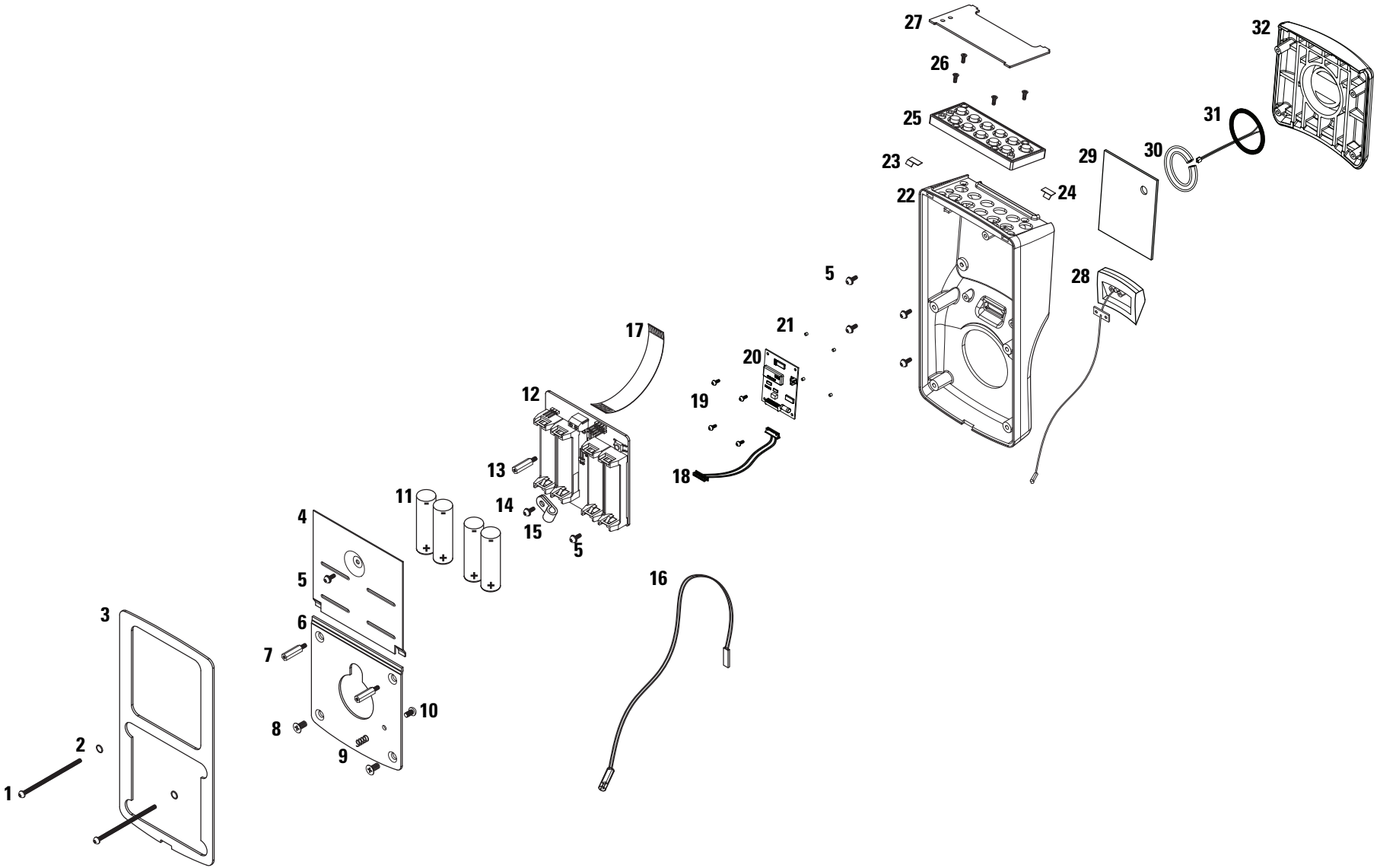


Figure 2.3 Proximity reader escutcheon assembly (WAMS mortise shown)

Proximity reader escutcheon assembly parts list

Refer to [Figure 2.3](#) and the table below to find the part you need.

Item	Qty.	WAMS Part No.	2000 Series Part No.	Description
1	2	A82573	A82573	Standard door mounting screw (1-1/4" TORX® T15 button head) (mortise locks only)
not shown	2	A82574	A82574	Thick door mounting screw (1-1/2" TORX® T15 button head) (mortise locks only)
2	2	A82212	A82212	Flat nylon washer (mortise locks only)
3	1	B82267	B82267	Housing gasket
4	1	A82271	A82271	Battery cover ^a
5	6 ^b	A82245	A82245	Escutcheon assembly screw (#4-40 × 1/4" Phillips pan head)
6	1	B82296	B82296	Mortise mounting plate
not shown	1	B82277	B82277	Cylindrical mounting plate
7	2	A82300	A82300	Mounting plate standoff
8	2 ^c	B82272	B82272	Mounting plate screw (#8-32 × 3/8" Phillips flat head)
9	1	A82299	A82299	Grounding spring
10	1	A82309	A82309	Grounding spring screw (#6-32 × 1/4" Phillips pan head)
11	1	A82265	A82265	Set of 4 batteries (AA alkaline, 1.5V) ^d
12	1	3064470	3061490	Circuit board ^e
13	1	A82086	A82086	Battery cover standoff
14	1	A82786	A82786	Cable clamp mounting screw (mortise locks only)
15	1	A82554	A82554	Cable clamp (mortise locks only)
16	1	B82852	B82852	Motor wire harness
17	1	A82249	A82249	Reader cable assembly
18	1	3062138	3062138	Proximity reader cable assembly
19	4	A82224	A82224	Proximity reader circuit board screw (#2-56 Phillips pan head)
20	1	3062096	3062096	Proximity reader circuit board
21	4	A82225	A82225	Spacer
not shown	1	A82262	A82262	Cylindrical rose gasket
22	1	B82214	B82214	Proximity reader housing ^f
23	1	A82202	A82202	Left bezel spring
24	1	A82201	A82201	Right bezel spring
25	1	B82546	B82546	Keypad assembly
26	4	A82206	A82206	Keyboard mounting screw (#4-40 × 1/4" Phillips flat head)

Item	Qty.	WAMS	2000 Series	Description
		Part No.	Part No.	
27	1	B82211	B82211	Bezel
28	1	3064554	—	Antenna assembly
not shown	1	—	B82243	IR window
29	1	A82291	A82291	Cover gasket
30	1	3062337	2062337	Clear tubing
31	1	B82293	B82293	Proximity reader antenna
32	1	B82223	B82223	Front cover ^f

- a. For the part number for extreme weatherized battery covers, see *Extreme weatherized escutcheon components* on page 2-18.
- b. Cylindrical applications use seven A82245 screws.
- c. The cylindrical mounting plate uses four B82272 screws.
- d. For the part numbers for weatherized batteries, see *Weatherized escutcheon components* on page 2-17. For best performance, use Duracell or Energizer batteries.
- e. For the part numbers for weatherized circuit boards, see *Weatherized escutcheon components* on page 2-17. For part numbers for extreme weatherized circuit boards, see *Extreme weatherized escutcheon components* on page 2-18.
- f. Specify finish (gray, black, or satin chrome).

DUAL VALIDATION READER (KEYPAD AND MAGNETIC STRIPE)

Dual validation reader (keypad and magnetic stripe) escutcheon assembly exploded view

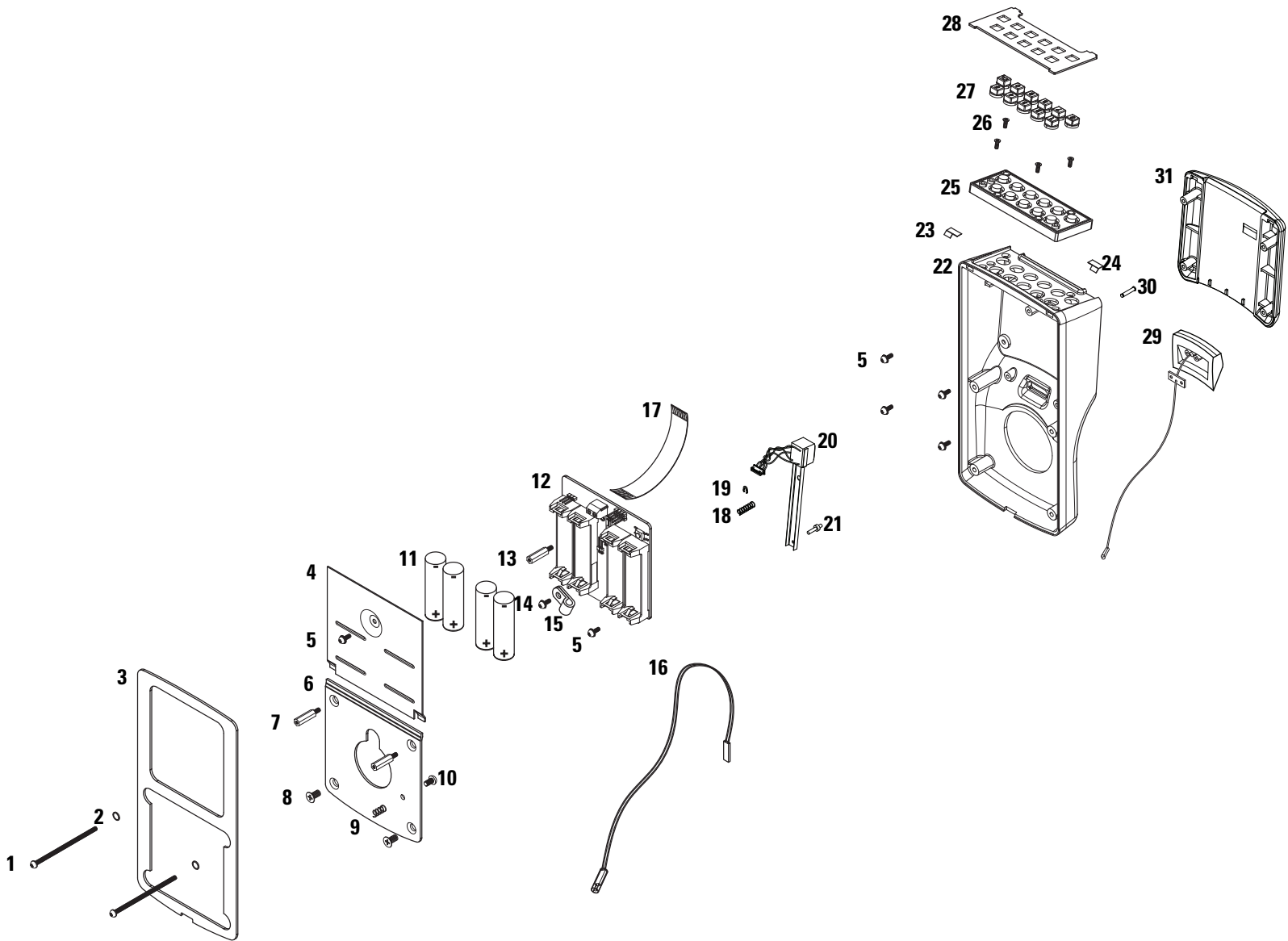


Figure 2.4 Dual validation reader (keypad and magnetic stripe) escutcheon assembly (WAMS mortise shown)

**Dual validation
reader (keypad and
magnetic stripe)
escutcheon
assembly parts list**

Refer to [Figure 2.4](#) and the table below to find the part you need.

Item	Qty.	WAMS Part No.	2000 Series Part No.	Description
1	2	A82573	A82573	Standard door mounting screw (1-1/4" TORX® T15 button head) (mortise locks only)
not shown	2	A82574	A82574	Thick door mounting screw (1-1/2" TORX® T15 button head) (mortise locks only)
2	2	A82212	A82212	Flat nylon washer (mortise locks only)
3	1	B82267	B82267	Housing gasket
4	1	A82271	A82271	Battery cover ^a
5	6 ^b	A82245	A82245	Escutcheon assembly screw (#4-40 × 1/4" Phillips pan head)
6	1	B82296	B82296	Mortise mounting plate
not shown	1	B82277	B82277	Cylindrical mounting plate
7	2	A82300	A82300	Mounting plate standoff
8	2 ^c	B82272	B82272	Mounting plate screw (#8-32 × 3/8" Phillips flat head)
9	1	A82299	A82299	Grounding spring
10	1	A82309	A82309	Grounding spring screw (#6-32 × 1/4" Phillips pan head)
11	1	A82265	A82265	Set of 4 batteries (AA alkaline, 1.5V) ^d
12	1	3064470	3061490	Circuit board ^e
13	1	A82086	A82086	Battery cover standoff
14	1	A82786	A82786	Cable clamp mounting screw (mortise locks only)
15	1	A82554	A82554	Cable clamp (mortise locks only)
16	1	B82852	B82852	Motor wire harness
17	1	A82249	A82249	Reader cable assembly
18	1	A82210	A82210	Magnetic head spring
19	1	A82205	A82205	Magnetic head retaining ring
20	1	B82228	B82228	Magnetic head assembly
21	1	A82207	A82207	Magnetic head pivot pin
not shown	1	A82262	A82262	Cylindrical rose gasket
22	1	B82215	B82215	Reader housing ^f
23	1	A82202	A82202	Left bezel spring
24	1	A82201	A82201	Right bezel spring
25	1	B82546	B82546	Keypad assembly
26	4	A82206	A82206	Keyboard mounting screw (#4-40 × 1/4" Phillips flat head)
27	1	B82242	B82242	Set of keypad keys ^f

Item	Qty.	WAMS	2000 Series	Description
		Part No.	Part No.	
28	1	B82229	B82229	Keypad bezel
not shown	1	—	B82243	IR window
29	1	3064554	—	Antenna assembly
30	1	A82208	A82208	Magnetic head pin
31	1	B82222	B82222	Front cover ^f

- a. For the part number for extreme weatherized battery covers, see *Extreme weatherized escutcheon components* on page 2-18.
- b. Cylindrical applications use seven A82245 screws.
- c. The cylindrical mounting plate uses four B82272 screws.
- d. For the part numbers for weatherized batteries, see *Weatherized escutcheon components* on page 2-17. For best performance, use Duracell or Energizer batteries.
- e. For the part numbers for weatherized circuit boards, see *Weatherized escutcheon components* on page 2-17. For part numbers for extreme weatherized circuit boards, see *Extreme weatherized escutcheon components* on page 2-18.
- f. Specify finish (gray, black, or satin chrome).

DUAL VALIDATION READER (KEYPAD AND PROXIMITY)

Dual validation reader (keypad and proximity) escutcheon assembly exploded view

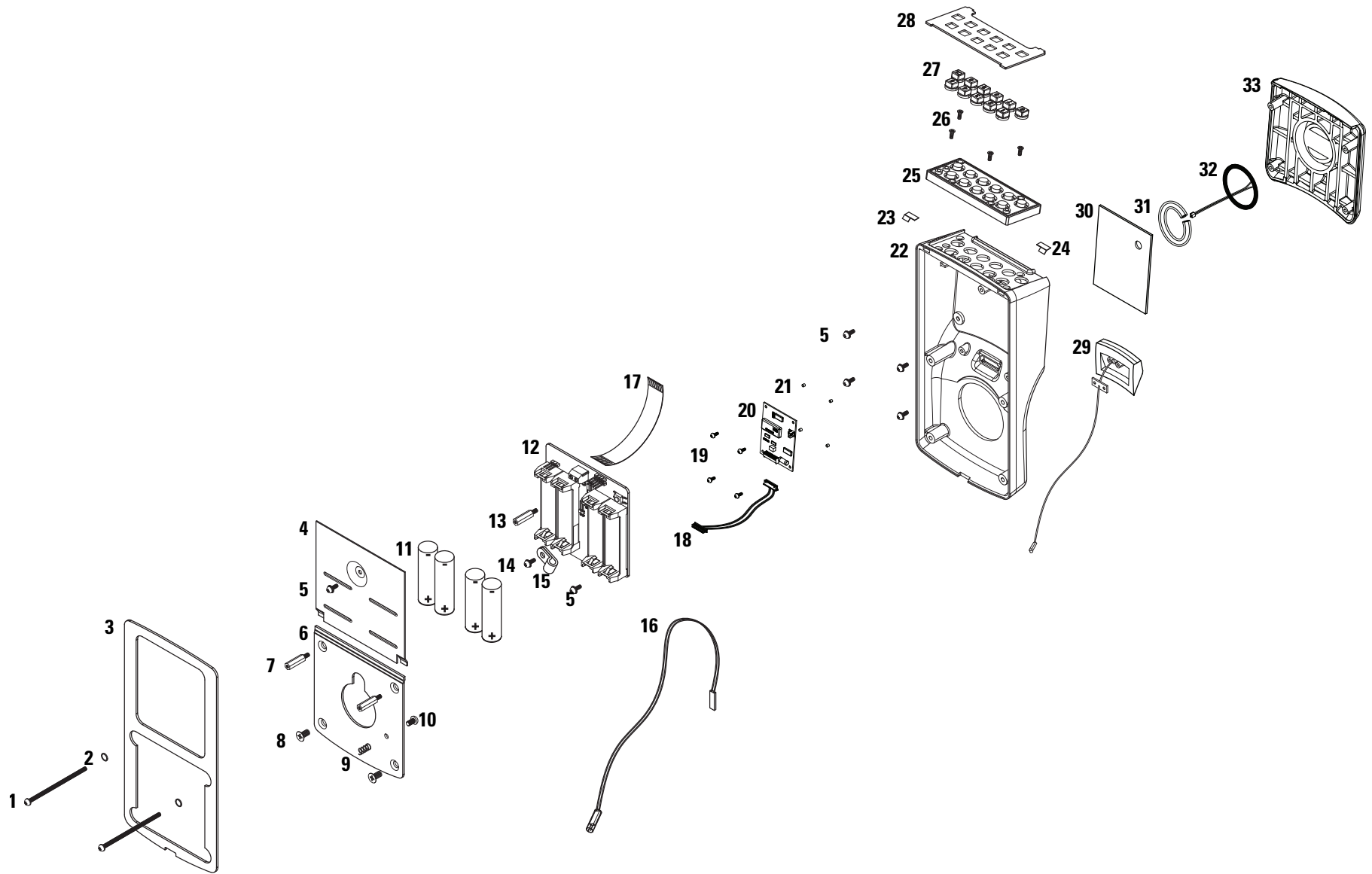


Figure 2.5 Dual validation reader-keypad and proximity escutcheon assembly (WAMS mortise shown)

**Dual validation
reader (keypad and
proximity)
escutcheon
assembly parts list**

Refer to [Figure 2.5](#) and the table below to find the part you need.

Item	Qty.	WAMS Part No.	2000 Series Part No.	Description
1	2	A82573	A82573	Standard door mounting screw (1-1/4" TORX® T15 button head) (mortise locks only)
not shown	2	A82574	A82574	Thick door mounting screw (1-1/2" TORX® T15 button head) (mortise locks only)
2	2	A82212	A82212	Flat nylon washer (mortise locks only)
3	1	B82267	B82267	Housing gasket
4	1	A82271	A82271	Battery cover ^a
5	6 ^b	A82245	A82245	Escutcheon assembly screw (#4-40 × 1/4" Phillips pan head)
6	1	B82296	B82296	Mortise mounting plate
not shown	1	B82277	B82277	Cylindrical mounting plate
7	2	A82300	A82300	Mounting plate standoff
8	2 ^c	B82272	B82272	Mounting plate screw (#8-32 × 3/8" Phillips flat head)
9	1	A82299	A82299	Grounding spring
10	1	A82309	A82309	Grounding spring screw (#6-32 × 1/4" Phillips pan head)
11	1	A82265	A82265	Set of 4 batteries (AA alkaline, 1.5V) ^d
12	1	3064470	3061490	Circuit board ^e
13	1	A82086	A82086	Battery cover standoff
14	1	A82786	A82786	Cable clamp mounting screw (mortise locks only)
15	1	A82554	A82554	Cable clamp (mortise locks only)
16	1	B82852	B82852	Motor wire harness
17	1	A82249	A82249	Reader cable assembly
18	1	3062138	3062138	Proximity reader cable assembly
19	4	A82224	A82224	Proximity reader circuit board screw (#2-56 Phillips pan head)
20	1	3062096	3062096	Proximity reader circuit board
21	4	A82225	A82225	Spacer
22	1	B82214	B82214	Proximity reader housing ^f
23	1	A82202	A82202	Left bezel spring
24	1	A82201	A82201	Right bezel spring
25	1	B82546	B82546	Keypad assembly
26	4	A82206	A82206	Keyboard mounting screw (#4-40 × 1/4" Phillips flat head)
27	1	B82242	B82242	Set of keypad keys ^f

Item	Qty.	WAMS	2000 Series	Description
		Part No.	Part No.	
28	1	B82229	B82229	Keypad bezel
not shown	1	—	B82243	IR window
29	1	3064554	—	Antenna assembly
30	1	A82291	A82291	Cover gasket
31	1	3062337	2062337	Clear tubing
32	1	B82293	B82293	Proximity reader antenna
33	1	B82223	B82223	Front cover ^f

- For the part number for extreme weatherized battery covers, see *Extreme weatherized escutcheon components* on page 2-18.
- Cylindrical applications use seven A82245 screws.
- The cylindrical mounting plate uses four B82272 screws.
- For the part numbers for weatherized batteries, see *Weatherized escutcheon components* on page 2-17. For best performance, use Duracell or Energizer batteries.
- For the part numbers for weatherized circuit boards, see *Weatherized escutcheon components* on page 2-17. For part numbers for extreme weatherized circuit boards, see *Extreme weatherized escutcheon components* on page 2-18.
- Specify finish (gray, black, or satin chrome).

WEATHERIZED ESCUTCHEON COMPONENTS

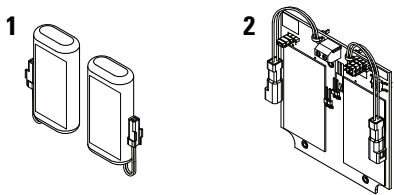


Figure 2.6 Weatherized escutcheon components

Weatherized
escutcheon
components list

Weatherized escutcheon assemblies include all of the components listed for the corresponding standard escutcheon assembly except for the battery pack and circuit board. Refer to [Figure 2.6](#) and the table below to find the part you need.

Item	Qty.	WAMS	2000 Series	500 Series	Description
		Part No.	Part No.	Part No.	
1	2	3092031	3092031	3092031	Weatherized battery pack (alkaline 3V)
2	1	3103378	3092005	3109736	Weatherized circuit board ^a

a. The weatherized circuit board is not sold individually. It is provided with weatherized housing assemblies.

EXTREME WEATHERIZED ESCUTCHEON COMPONENTS

Extreme weatherized escutcheon components exploded view

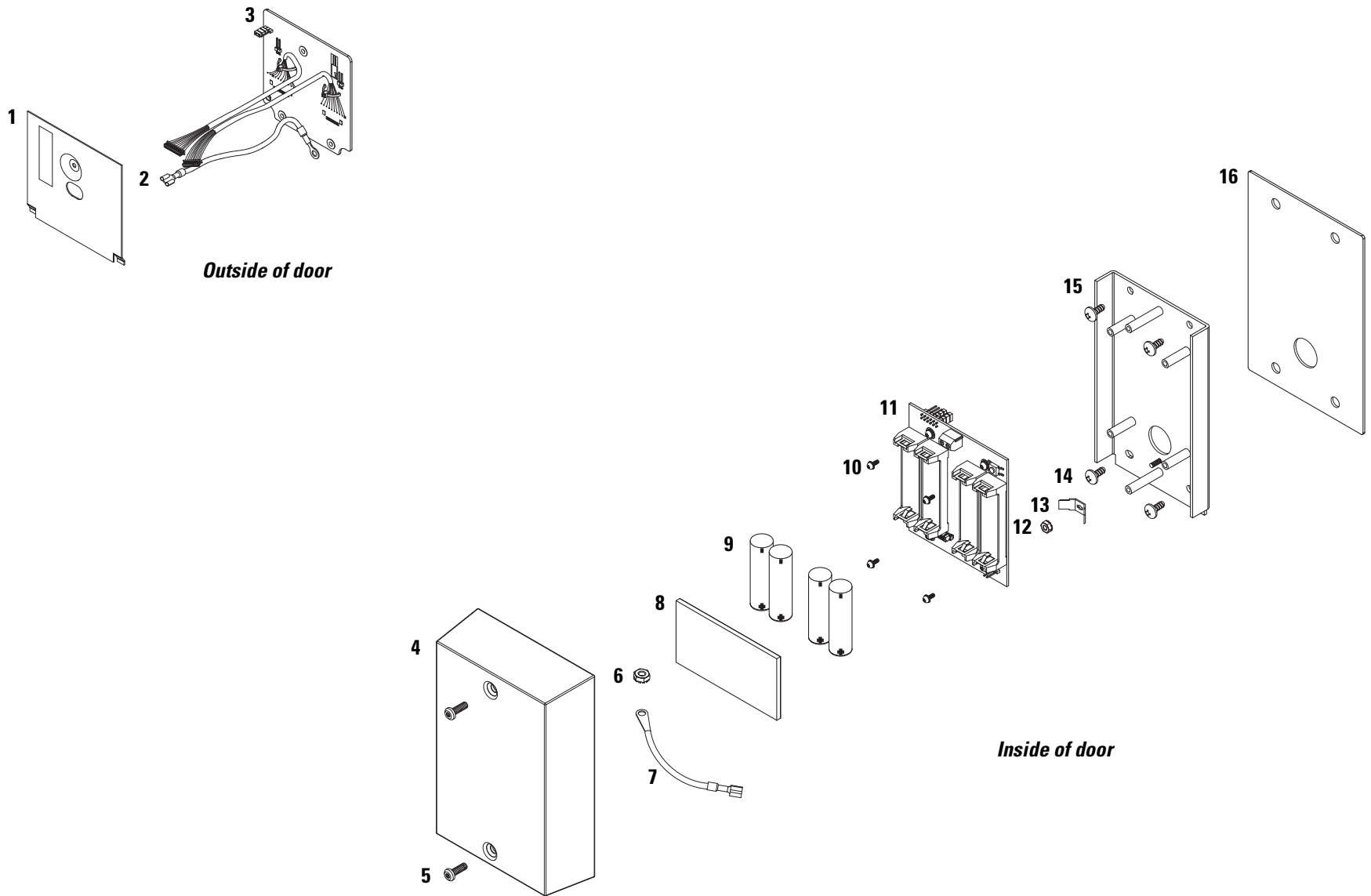


Figure 2.7 Extreme weatherized escutcheon components

Extreme weatherized escutcheon parts list

The extreme weatherized option is available for OMNILOCK 500 Series and 2000 Series Locks. Extreme weatherized escutcheon assemblies include all of the components listed for the corresponding standard escutcheon assembly except for the battery cover and circuit board. They also include the additional components listed below. Refer to [Figure 2.7](#) and the table below to find the part you need.

Item	Qty.	2000 Series	500 Series	Description
		Part No.	Part No.	
1	1	B82856	B82856	Weatherized reader battery cover
2	1	B82857	B82857	Wire assembly
3	1	3092430	3092430	Weatherized circuit board ^a
4	1	B82747	B82747	Interior electronics housing
5	2	A82575	A82575	Screw (#8-32 × 3/4" TORX® T15 button head)
6	1	A82555	A82555	Nut
7	1	A83017	A83017	Wire assembly
8	1	A82269	A82269	Foam pad
9	1	A82265	A82265	Set of 4 batteries (AA alkaline, 1.5V)
10	4	A82245	A82245	Screw (#4-40 × 1/4" Phillips pan head)
11	1	3108334	3107901	Weatherized circuit board
12	1	O10665-2	O10665-2	Nut
13	1	O11706-1	O11706-1	Quick disk terminal
14	4	O10421-1	O10421-1	Housing bracket screw (#8 × 1/2")
15	1	B82748	B82748	Housing bracket
16	1	O10951	O10951	Housing bracket gasket

- a. The weatherized circuit board is not sold individually. It is provided with weatherized housing assemblies.

3

MORTISE COMPONENTS

This chapter provides diagrams and part numbers for the inside trim, outside trim, and lock cases for standard OMNILOCK Mortise Locks. It also describes the case faceplates, strike boxes, strike plates, and cylinders for OMNILOCK Mortise Locks.

OUTSIDE TRIM COMPONENTS

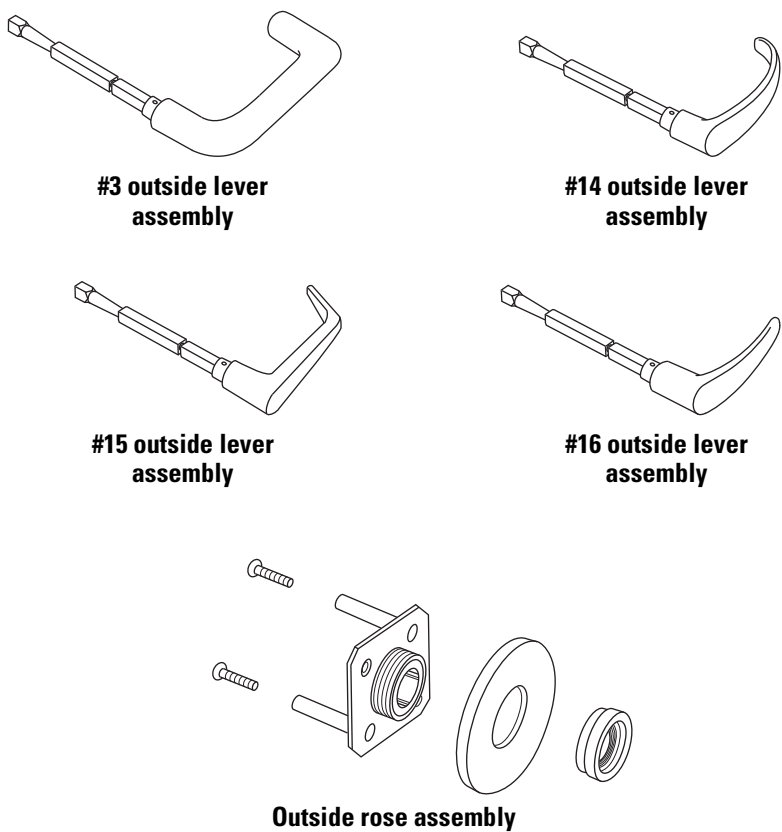


Figure 3.1 Outside mortise trim

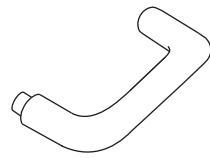
Outside trim
parts list

Refer to [Figure 3.1](#) and the table below to find the part you need. For thick door part numbers, see the *40H Series Service Manual*.

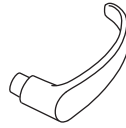
Item	Finish and Part Number			
	612 ^a	613 ^b	626 ^c	690 ^d
#3 outside lever assembly	1899574	1899616	1899815	1899930
#14 outside lever assembly	1900537	1900579	1900778	1900893
#15 outside lever assembly	1901059	1901090	1901290	1901415
#16 outside lever assembly	1898770	1898811	1899019	1899134
Outside rose assembly	1895187	1895229	1895428	1895543

- a. Satin bronze, clear coated finish.
- b. Oxidized satin bronze, oil rubbed finish.
- c. Satin chromium plated finish.
- d. Dark bronze, powder coated finish.

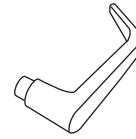
INSIDE TRIM COMPONENTS



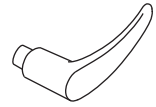
#3 inside lever assembly



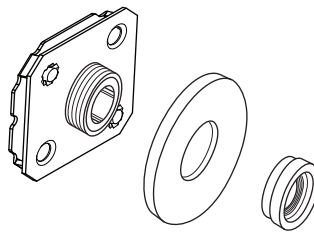
#14 inside lever assembly



#15 inside lever assembly



#16 inside lever assembly



Inside rose assembly



Optional turn knob

Figure 3.2 Inside mortise trim

Inside trim parts list

Refer to [Figure 3.2](#) and the table below to find the part you need.

Item	Finish and Part Number			
	612 ^a	613 ^b	626 ^c	690 ^d
#3 inside lever assembly	1894670	1894712	1894911	1895035
#14 inside lever assembly	1895632	1895674	1895873	1895999
#15 inside lever assembly	1896154	1896196	1896395	1896510
#16 inside lever assembly	1905933	1905975	1906172	1906298
Inside rose assembly	1895171	1895213	1895412	1895538
Inside rose assembly with turn knob	1902094	1902136	1902335	1902450

a. Satin bronze, clear coated finish.

b. Oxidized satin bronze, oil rubbed finish.

c. Satin chromium plated finish.

d. Dark bronze, powder coated finish.

SPINDLES

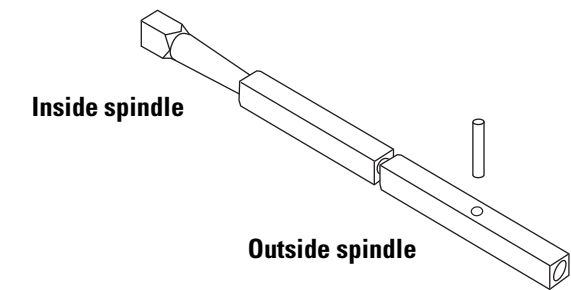


Figure 3.3 Spindles

Spindles parts list Refer to [Figure 3.3](#) and the table below to find the part you need.

Door Thickness ^b	Part Number ^a	
	Inside	Outside ^c
2"	B34016	B44210
2 1/4"	B34016	B44211
2 1/2"	B34016	B44212
2 3/4"	B34016	A44221
3"	B34165	A44222
3 1/4"	B34165	A44223
3 1/2"	B34165	A44224
3 3/4"	B34165	A44225
4"	B34165	A44226
4 1/4"	B34550	A44227
4 1/2"	B34550	A44228
4 3/4"	B34550	A44229
5"	B34550	A44230

- a. The part numbers provided are for installations where the mortise case is centered on the door.
- b. If your door thickness measurements are in between those listed, round up.
- c. The A63101 pin is required for all outside spindles. It is ordered separately from the spindle.

MORTISE CASES BY FUNCTION AND OPTION

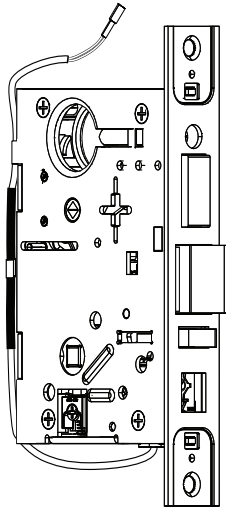


Figure 3.4 Mortise case assembly

Mortise case assemblies

Refer to the tables below to find the case assembly you need.

Sensor Option	Part Number	
	DV Function ^a	TV Function ^a
None	C45741	C45743
Key override switch	C44639	C44638
Request-to-exit switch ^b	C44649	C44641
Key override switch and request-to-exit switch ^b	—	C44640
Key override switch, request-to-exit switch, and door status switch ^b	C44644	—
Key override switch, request-to-exit switch, door status switch, and latch status switch ^b	C44642	—
Request-to-exit switch, door status switch, and latch status switch ^b	C44643	—
Request-to-exit switch and door status switch ^b	C44649	—

a. All mortise case assemblies include two A18724 case mounting screws (#12-12 × 3/4" Phillips flat head).

b. Available for WAMS Mortise Locks only.

MORTISE CASE FACEPLATES

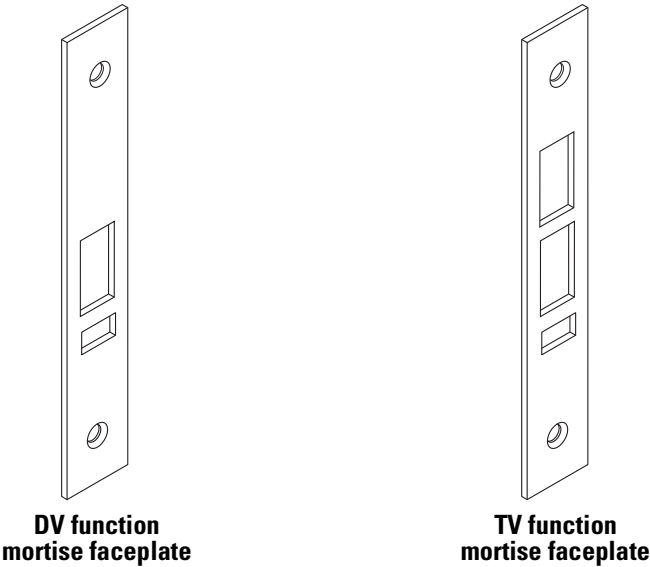


Figure 3.5 Mortise case faceplates

Mortise case faceplates parts list

Refer to [Figure 3.5](#) and the table below to find the part you need.

Item	Finish and Part Number			
	612 ^a	613 ^b	626 ^c	690 ^d
40H faceplate assembly (DV function) ^e	1895962	1896002	1896201	1896243
40H faceplate assembly (TV function) ^e	1895082	1895124	1895323	1895365

- a. Satin bronze, clear coated finish.
- b. Oxidized satin bronze, oil rubbed finish.
- c. Satin chromium plated finish.
- d. Dark bronze, powder coated finish.
- e. The assembly includes one faceplate and two faceplate screws (#8-32 × 1/4" Phillips flat head).

STRIKE BOXES AND STRIKE PLATES

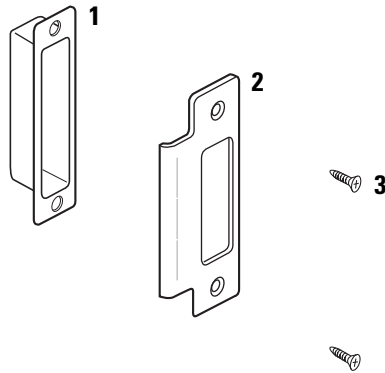


Figure 3.6 Mortise strike boxes and strike plates

Strike boxes and strike plates parts list

Refer to [Figure 3.6](#) and the table below to find the part you need.

Item	Finish and Part Number			
	612 ^a	613 ^b	626 ^c	690 ^d
40H universal strike plate package ^e	1902969	1903009	1903208	1903323
Plastic strike box			B34380 ^f	
Magnetic strike box for DV function door status monitor			B61224 ^f	

a. Satin bronze, clear coated finish.

b. Oxidized satin bronze, oil rubbed finish.

c. Satin chromium plated finish.

d. Dark bronze, powder coated finish.

e. The package includes one strike plate and two screws (#12-12 × 3/4" Phillips flat head).

f. This item is not finish specific.

CYLINDER COMPONENTS

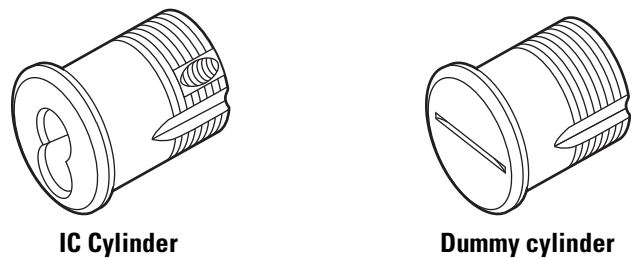


Figure 3.7 Mortise cylinder components

Cylinder parts list Refer to [Figure 3.7](#) and the table below to find the part you need.

Item	Finish and Part Number			
	612 ^a	613 ^b	626 ^c	690 ^d
IC cylinder and cam assembly ^e	1307641	1878376	1307772	1307683
Dummy cylinder assembly ^f	1292541	1292583	1292358	1792410

- a. Satin bronze, clear coated finish.
- b. Oxidized satin bronze, oil rubbed finish.
- c. Satin chromium plated finish.
- d. Dark bronze, powder coated finish.
- e. The assembly includes one throw plug spacer, two throw pins, one throw plug, one stamp head, one IC cylinder, one collar, and one cam.
- f. The assembly includes two clamp screws, one clamp plate, and one dummy cylinder.

4

CYLINDRICAL COMPONENTS

This chapter provides diagrams and part numbers for the inside trim, outside trim, and lock chassis for standard OMNILOCK Cylindrical Locks. It also describes the latches, strike boxes, and strike plates, for OMNILOCK Cylindrical Locks.

STANDARD TRIM COMPONENTS

Standard trim
exploded view

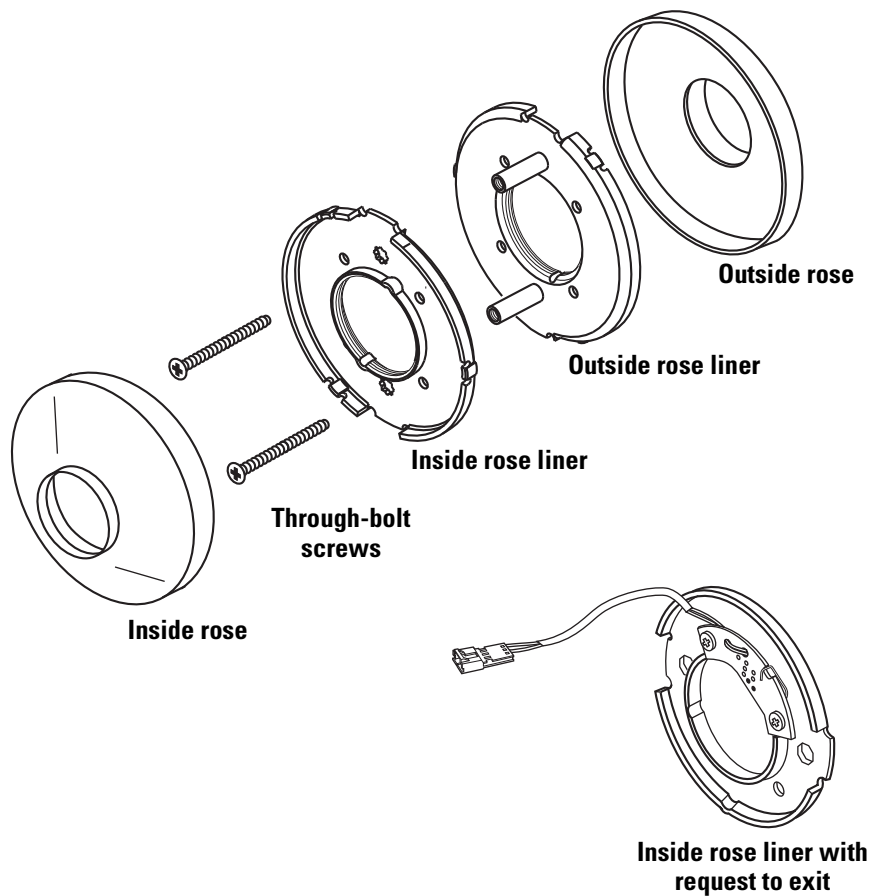


Figure 4.1 Standard trim exploded view

Standard trim
parts list

Refer to [Figure 4.1](#) and the table below to find the part you need.

Item	Finish and Part Number			
	612 ^a	613 ^b	626 ^c	690 ^d
Inside Rose	1593527	1593569	1593726	1781151
Two through-bolt screws		B55557 ^e		
Inside rose liner		C55555 ^e		
Inside rose liner with request to exit		B82185 ^e		
Outside rose liner		A82180 ^e		
Outside rose	3106850	3111420	3106819	3106892

- a. Satin bronze, clear coated finish.
- b. Oxidized satin bronze, oil rubbed finish.
- c. Satin chromium plated finish.
- d. Dark bronze, powder coated finish.
- e. This item is not finish specific.

STANDARD LEVERS

Standard levers

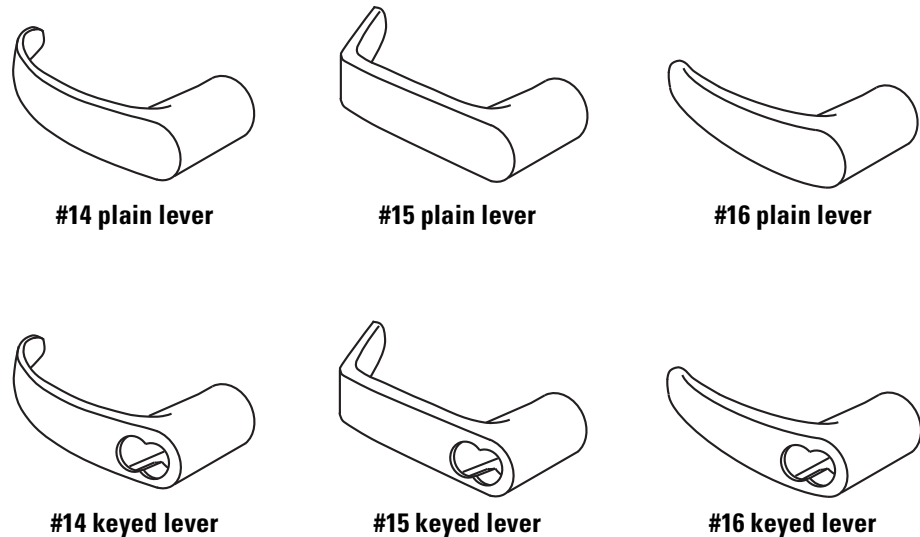


Figure 4.2 Standard cylindrical levers

Standard levers list

Refer to [Figure 4.2](#) and the table below to find the part you need.

Item	Finish and Part Number			
	612 ^a	613 ^b	626 ^c	690 ^d
#14 plain lever	1602303	1602345	1602502	1763620
#15 plain lever	1747189	1747220	1747388	1788100
#16 plain lever	1580641	1580683	1580840	1814176
#14 keyed lever	1601734	1601776	1601933	1763504
#15 keyed lever	1736507	1736549	1736706	1781078
#16 keyed lever	1580662	1580704	1580861	1814218
#14 non IC Schlage / Corbin / Medeco	1890917	1890959	1891114	1911418
#15 non IC Schlage / Corbin / Medeco	1768675	1768717	1768874	1883716
#16 non IC Schlage / Corbin / Medeco	1891313	1891355	1891512	3125826
#14 non IC Sargent / Yale	1906675	1906717	1906832	not available
#15 non IC Sargent / Yale	1768235	1768277	1768434	1913373
#16 non IC Sargent / Yale	1906990	1907030	1907155	not available
#14 non IC Schlage large format	1907580	1907621	1907747	not available
#15 non IC Schlage large format	1907904	1907946	1908060	not available

a. Satin bronze, clear coated finish.

b. Oxidized satin bronze, oil rubbed finish.

c. Satin chromium plated finish.

d. Dark bronze, powder coated finish.

CYLINDRICAL CHASSIS

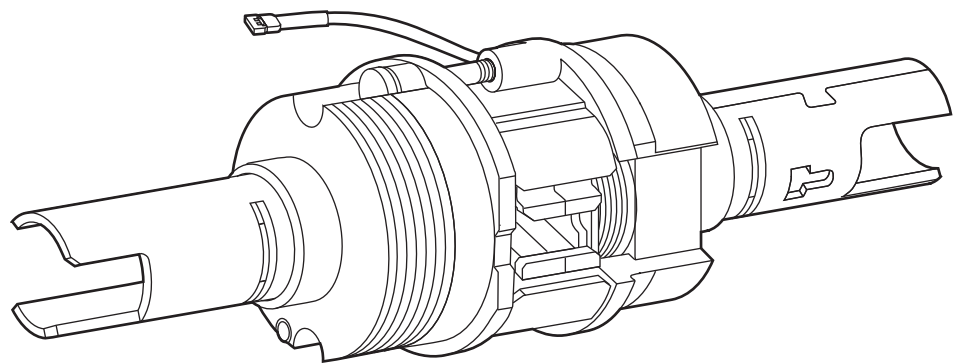


Figure 4.3 Cylindrical chassis

Cylindrical
chassis list

Refer to the table below to find the chassis you need.

Part No.	Chassis Type
D82170	9KOM standard and Schlage large format chassis
D82171	9KOM non-IC chassis
D82172	9KOM chassis with request to exit and door switch monitor ^a

a. Available for WAMS Locks only.

LATCHES

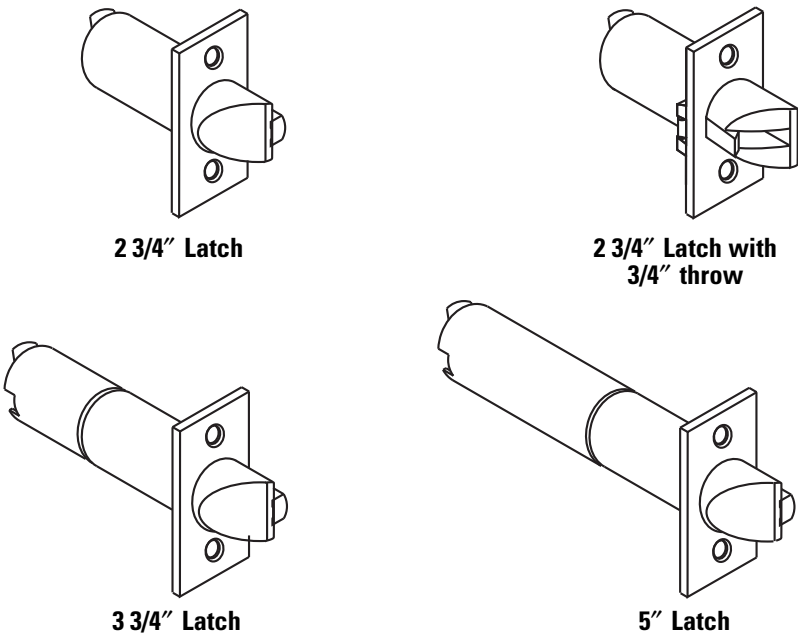


Figure 4.4 Cylindrical latches

Latches list Refer to [Figure 4.4](#) and the table below to find the part you need.

Item	Finish and Part Number			
	612 ^a	613 ^b	626 ^c	690 ^d
2 3/4" Latch	1414488	1414520	1414645	1781235
2 3/4" Latch with 3/4" throw	1905027	1894471	1243824	1894471
3 3/4" Latch	1415209	1415240	1415366	1792425
5" Latch	1415607	1415649	1415738	1763546

- a. Satin bronze, clear coated finish.
- b. Oxidized satin bronze, oil rubbed finish.
- c. Satin chromium plated finish.
- d. Dark bronze, powder coated finish.

STRIKE BOXES AND STRIKE PLATES

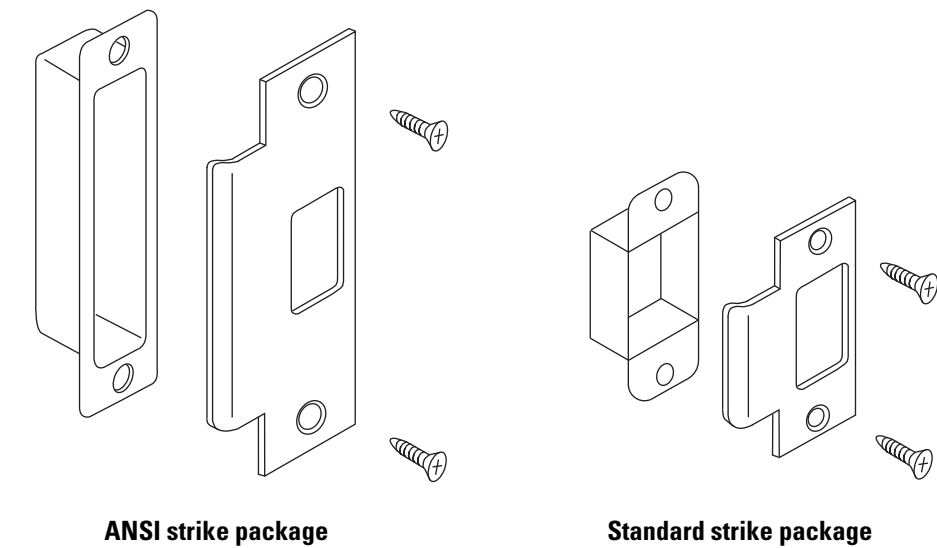


Figure 4.5 Cylindrical strike boxes and strike plates

Strike boxes and strike plates parts list

Refer to [Figure 4.5](#) and the table below to find the part you need.

Item	Finish and Part Number			
	612 ^a	613 ^b	626 ^c	690 ^d
ANSI strike and screws	1228455	1228460	1228434	1781319
ANSI plastic strike box		B34380 ^e		
ANSI magnetized strike box		B61224 ^e		
Standard strike and screws	1228366	1228371	1228324	1905100
Standard steel strike box		B25640 ^e		

- a. Satin bronze, clear coated finish.
- b. Oxidized satin bronze, oil rubbed finish.
- c. Satin chromium plated finish.
- d. Dark bronze, powder coated finish.
- e. This item is not finish specific.

5

EXIT DEVICE TRIM COMPONENTS

This chapter provides exploded diagrams of the escutcheon assemblies for OMNILOCK Exit Device Trim. It also describes Exit device adapter plate kits, tailpiece kits, and outside levers. Weatherized and extreme weatherized components also are included. This chapter provides part numbers for all field-serviceable parts.

KEYPAD READER ESCUTCHEON ASSEMBLY Keypad reader escutcheon assembly exploded view

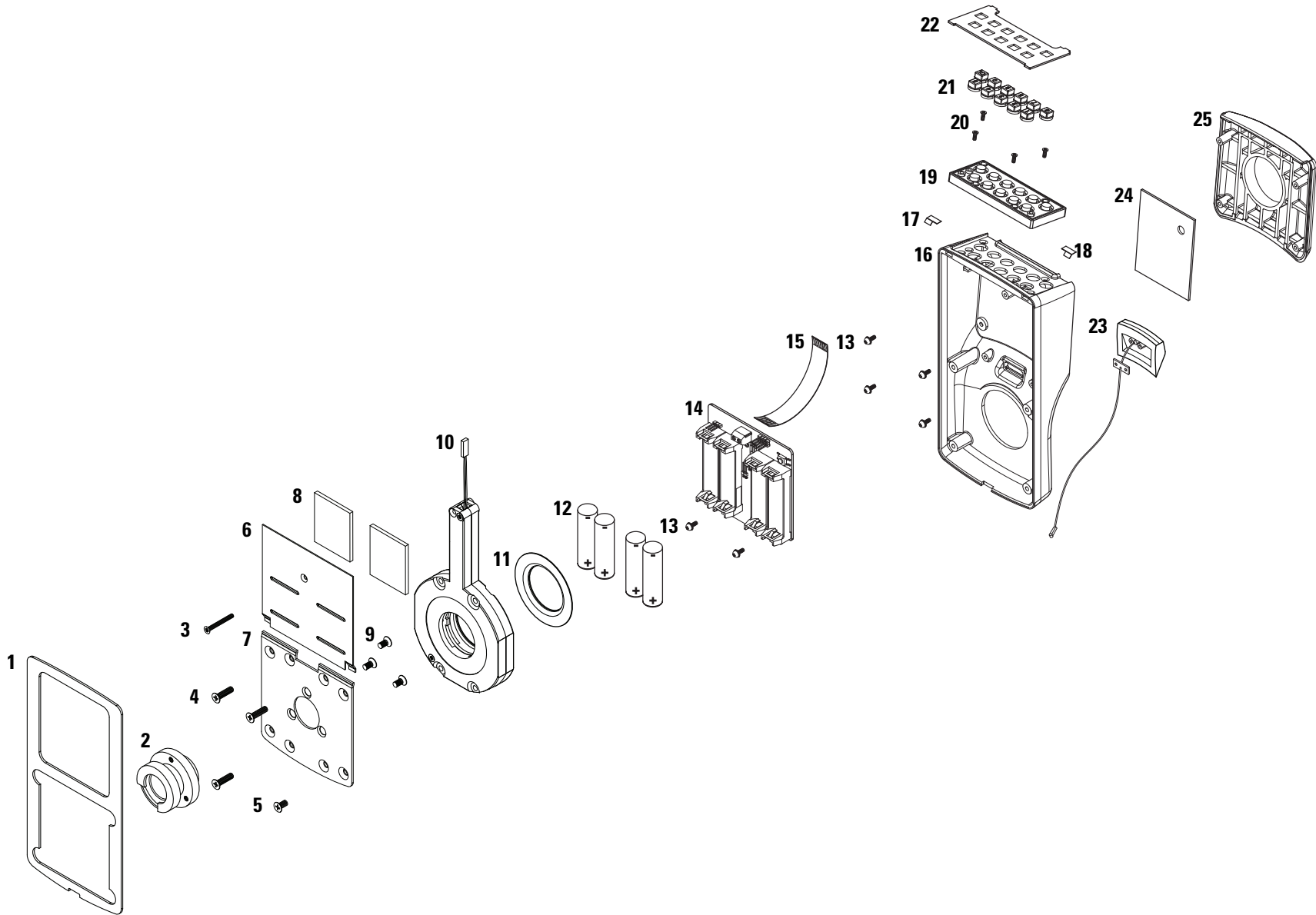


Figure 5.1 Keypad reader escutcheon assembly (WAMS shown)

Keypad reader
escutcheon
assembly parts listRefer to [Figure 5.1](#) and the table below to find the part you need.

Item	Qty.	WAMS Part No.	2000 Series Part No.	500 Series Part No.	Description
1	1	B82267	B82267	B82267	Housing gasket
2	1	B82735	B82735	B82735	Exit device bearing
3	1	A82719	A82719	A82719	Battery cover screw (#4-40 × 1" Phillips flat head)
4	3	A82724	A82724	A82724	Mounting plate screw (#8-32 × 5/8" Phillips flat head)
5	1	A82723	A82723	A82723	Mounting plate screw (#8-32 × 3/8" Phillips flat head)
6	1	B82736	B82736	B82736	Battery cover
7	1	B82734	B82734	B82734	Exit device mounting plate
8	2	A82720	A82720	A82720	Battery cover pad
9	3	A82272	A82272	A82272	Mounting plate screw (#8-32 × 3/8" Phillips flat head)
10	1	B82745	B82745	B82745	Quick adapter assembly
11	1	B82738	B82738	B82738	Quick adapter rose
12	1	A82265	A82265	A82265	Set of 4 batteries (AA alkaline, 1.5V) ^a
13	6 ^b	A82245	A82245	A82245	Escutcheon assembly screw (#4-40 × 1/4" Phillips pan head)
not shown	4	—	—	A82288	Cover mounting screw (Phillips pan head)
14	1	3064470	3061490	3108402	Circuit board ^c
15	1	A82249	A82249	A82249	Reader cable assembly
16	1	B82215	B82215	B82215	Reader housing ^d
17	1	A82202	A82202	A82202	Left bezel spring
18	1	A82201	A82201	A82201	Right bezel spring
19	1	B82546	B82546	B82547	Keypad assembly
20	4	A82206	A82206	A82206	Keyboard mounting screw (#4-40 × 1/4" Phillips flat head)
21	1	B82242	B82242	B82242	Set of keypad keys ^d
22	1	B82229	B82229	B82230	Keypad bezel
not shown	1	—	B82243	B82243	IR window
23	1	3064554	—	—	Antenna assembly
24	1	A82291	A82291	A82291	Reader cover gasket
25	1	B82221	B82221	B82221	Front cover ^d

a. For the part numbers for weatherized batteries, see *Weatherized escutcheon components* on page 5-12. For best performance, use Duracell or Energizer batteries.

b. The 500 Series keypad reader escutcheon assembly uses two A82245 screws.

c. For the part numbers for weatherized circuit boards, see *Weatherized escutcheon components* on page 5-12.

d. Specify finish (gray, black, or satin chrome).

MAGNETIC STRIPE READER

Magnetic stripe reader escutcheon assembly exploded view

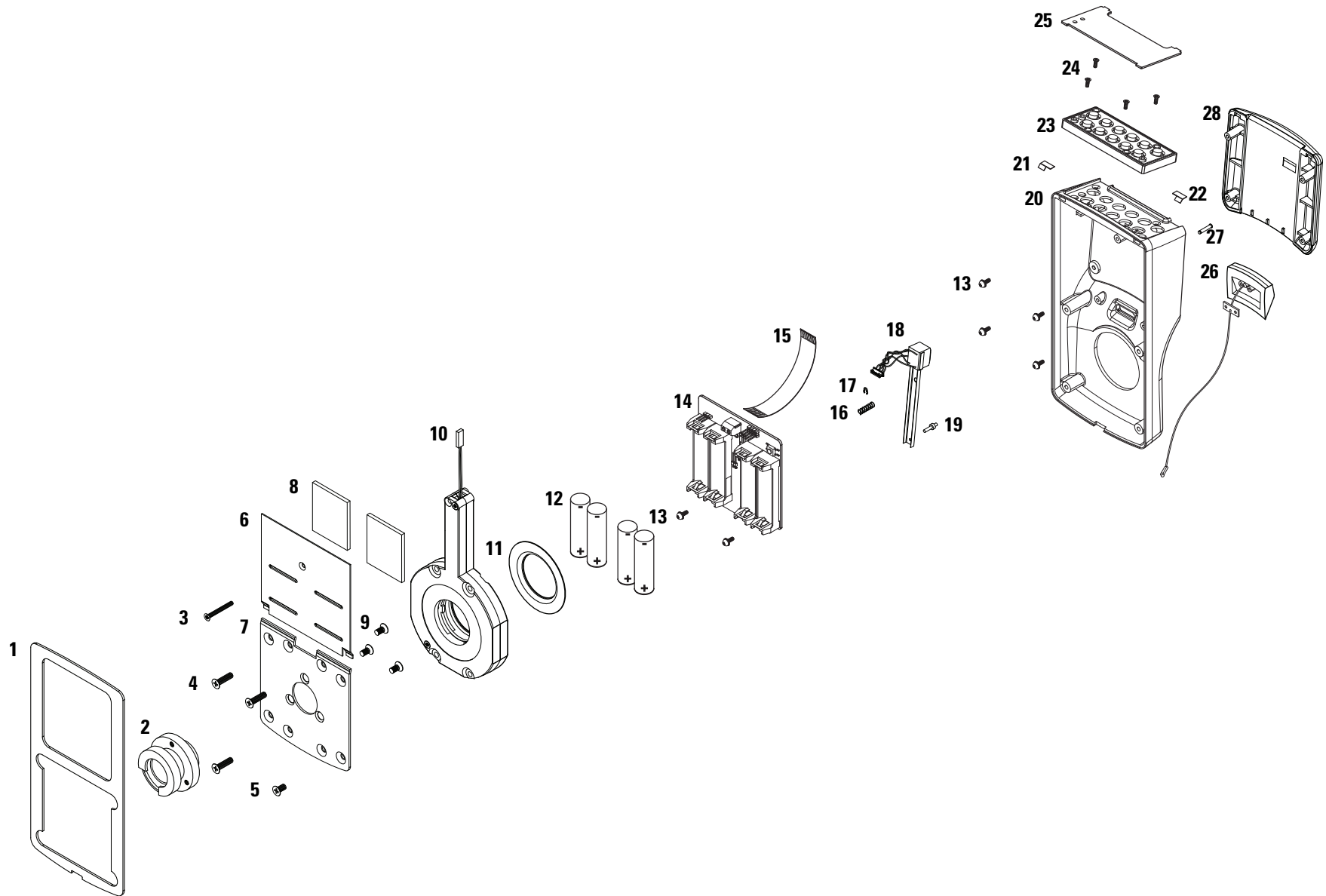


Figure 5.2 Magnetic stripe reader escutcheon assembly (WAMS shown)

**Magnetic stripe
reader escutcheon
assembly parts list**

Refer to [Figure 5.2](#) and the table below to find the part you need.

Item	Qty.	WAMS Part No.	2000 Series Part No.	Description
1	1	B82267	B82267	Housing gasket
2	1	B82735	B82735	Exit device bearing
3	1	A82719	A82719	Battery cover screw (#4-40 × 1" Phillips flat head)
4	3	A82724	A82724	Mounting plate screw (#8-32 × 5/8" Phillips flat head)
5	1	A82723	A82723	Mounting plate screw (#8-32 × 3/8" Phillips flat head)
6	1	B82736	B82736	Battery cover
7	1	B82734	B82734	Exit device mounting plate
8	2	A82720	A82720	Battery cover pad
9	3	A82272	A82272	Mounting plate screw (#8-32 × 3/8" Phillips flat head)
10	1	B82745	B82745	Quick adapter assembly
11	1	B82738	B82738	Quick adapter rose
12	1	A82265	A82265	Set of 4 batteries (AA alkaline, 1.5V) ^a
13	6	A82245	A82245	Escutcheon assembly screw (#4-40 × 1/4" Phillips pan head)
14	1	3064470	3061490	Circuit board ^b
15	1	A82249	A82249	Reader cable assembly
16	1	A82210	A82210	Magnetic head spring
17	1	A82205	A82205	Magnetic head retaining ring
18	1	B82228	B82228	Magnetic head assembly
19	1	A82207	A82207	Magnetic head pivot pin
20	1	B82215	B82215	Reader housing ^c
21	1	A82202	A82202	Left bezel spring
22	1	A82201	A82201	Right bezel spring
23	1	B82546	B82546	Keypad assembly
24	4	A82206	A82206	Keyboard mounting screw (#4-40 × 1/4" Phillips flat head)
25	1	B82211	B82211	Bezel
not shown	1	—	B82243	IR window
26	1	3064554	—	Antenna assembly
27	1	A82208	A82208	Magnetic head pin
28	1	B82222	B82222	Front cover ^c

a. For the part numbers for weatherized batteries, see *Weatherized escutcheon components* on page 5-12. For best performance, use Duracell or Energizer batteries.

b. For the part numbers for weatherized circuit boards, see *Weatherized escutcheon components* on page 5-12.

c. Specify finish (gray, black, or satin chrome).

PROXIMITY READER

Proximity reader escutcheon assembly exploded view

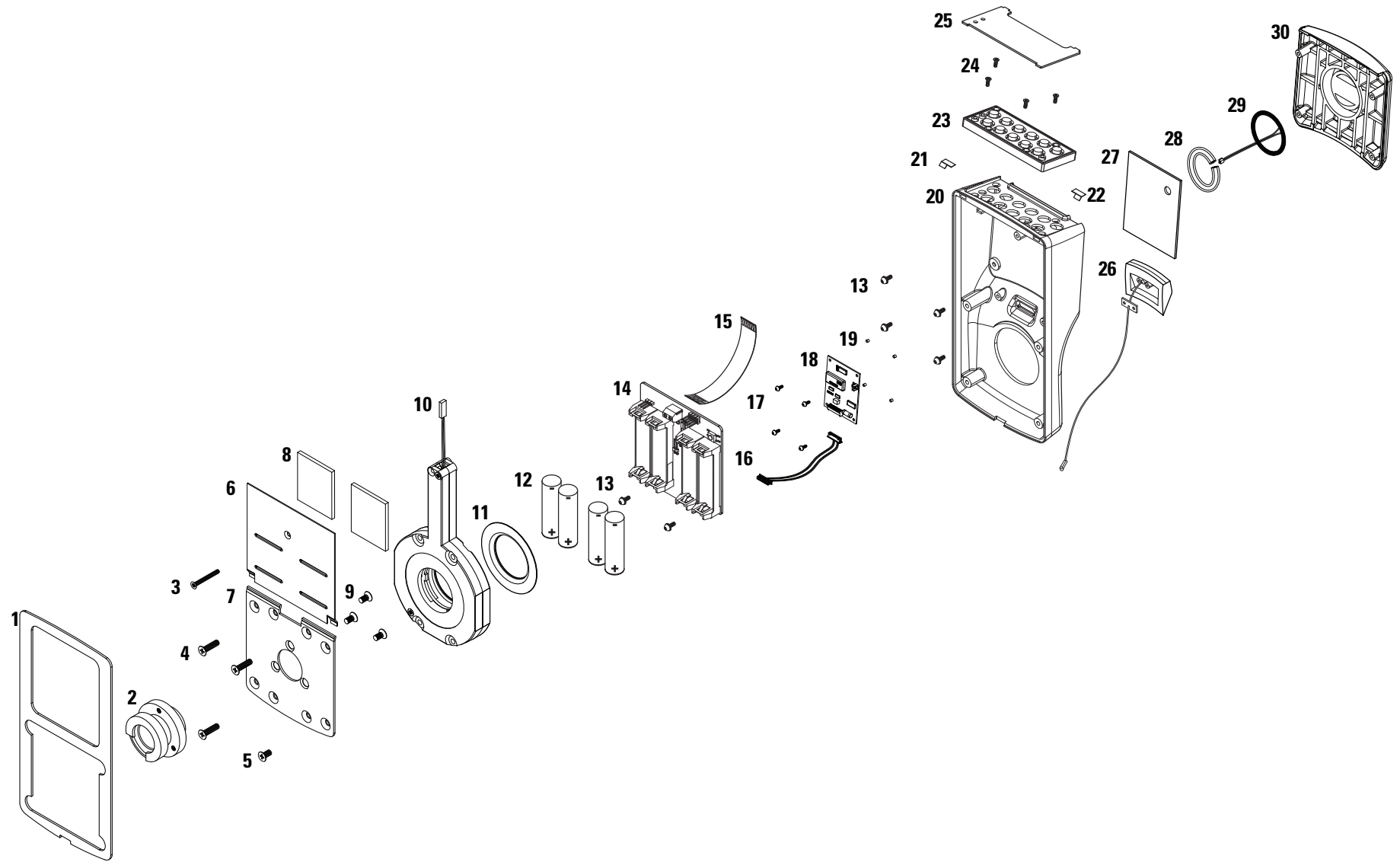


Figure 5.3 Proximity reader escutcheon assembly (WAMS shown)

Proximity reader
escutcheon
assembly parts listRefer to [Figure 5.3](#) and the table below to find the part you need.

Item	Qty.	WAMS	2000 Series	Description
		Part No.	Part No.	
1	1	B82267	B82267	Housing gasket
2	1	B82735	B82735	Exit device bearing
3	2	A82720	A82720	Battery cover pad
4	1	B82736	B82736	Battery cover
5	1	A82719	A82719	Battery cover screw (#4-40 × 1" Phillips flat head)
6	6	A82245	A82245	Escutcheon assembly screw (#4-40 × 1/4" Phillips pan head)
7	1	B82734	B82734	Exit device mounting plate
8	3	A82724	A82724	Mounting plate screw (#8-32 × 5/8" Phillips flat head)
9	1	A82723	A82723	Mounting plate screw (#8-32 × 3/8" Phillips flat head)
10	3	A82272	A82272	Mounting plate screw (#8-32 × 3/8" Phillips flat head)
11	1	B82745	B82745	Quick adapter assembly
12	1	B82738	B82738	Quick adapter rose
13	1	A82265	A82265	Set of 4 batteries (AA alkaline, 1.5V) ^a
14	1	3064470	3061490	Circuit board ^b
15	1	A82249	A82249	Reader cable assembly
16	1	3062138	3062138	Proximity reader cable assembly
17	4	A82224	A82224	Proximity reader circuit board screw (#2-56 Phillips pan head)
18	1	3062096	3062096	Proximity reader circuit board
19	4	A82225	A82225	Spacer
20	1	B82214	B82214	Reader housing ^c
21	1	A82202	A82202	Left bezel spring
22	1	A82201	A82201	Right bezel spring
23	1	B82546	B82546	Keypad assembly
24	4	A82206	A82206	Keyboard mounting screw (#4-40 × 1/4" Phillips flat head)
25	1	B82211	B82211	Bezel
not shown	1	—	B82243	IR window
26	1	3064554	—	Antenna assembly
27	1	A82291	A82291	Reader cover gasket
28	1	3062337	2062337	Clear tubing
29	1	B82293	B82293	Proximity reader antenna
30	1	B82223	B82223	Front cover ^c

a. For the part numbers for weatherized batteries, see *Weatherized escutcheon components* on page 5-12. For best performance, use Duracell or Energizer batteries.b. For the part numbers for weatherized circuit boards, see *Weatherized escutcheon components* on page 5-12.

c. Specify finish (gray, black, or satin chrome).

DUAL VALIDATION READER (KEYPAD AND MAGNETIC STRIPE)

Dual validation reader (keypad and magnetic stripe) escutcheon assembly exploded view

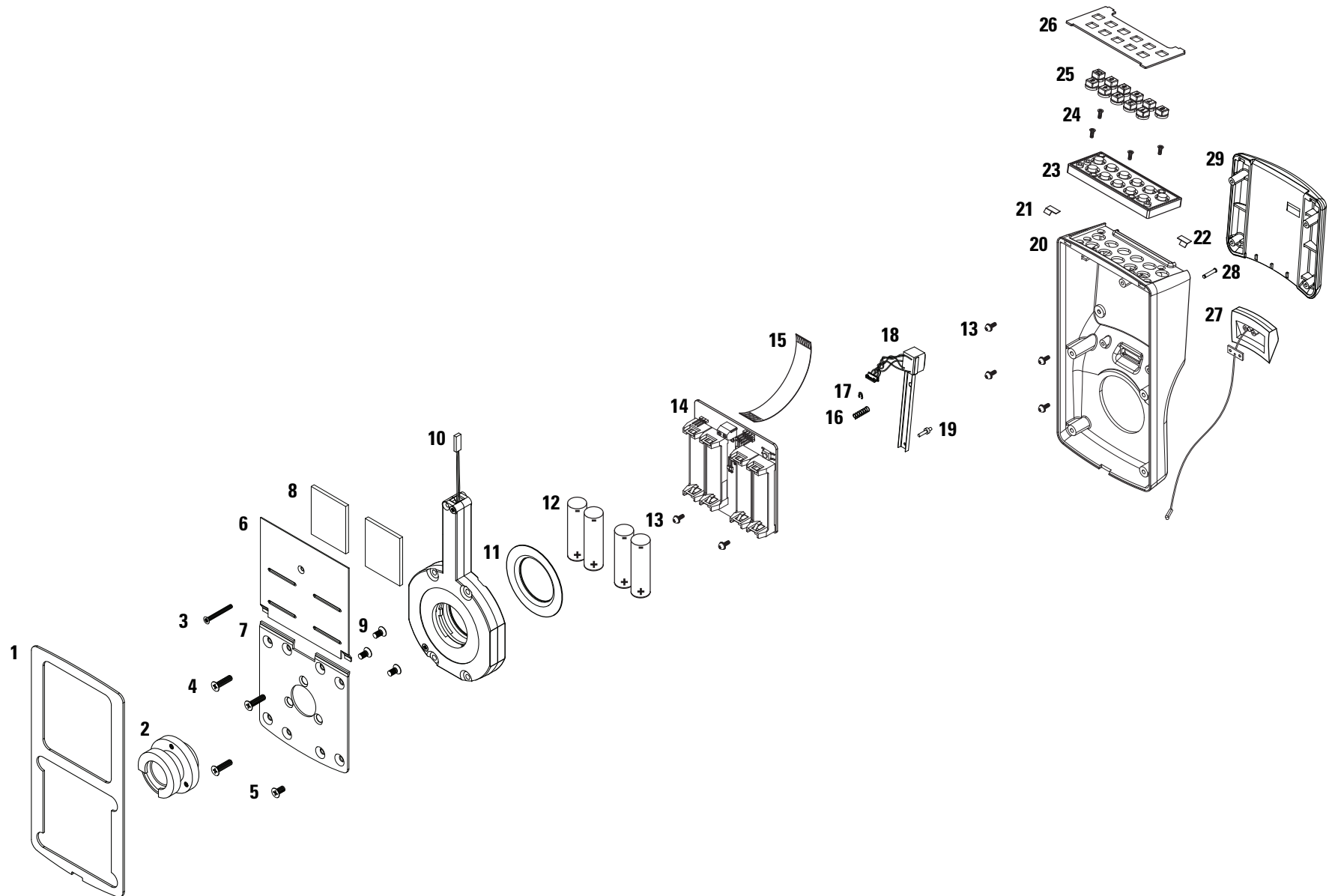


Figure 5.4 Dual validation reader (keypad and magnetic stripe) escutcheon assembly (WAMS shown)

**Dual validation
reader (keypad and
magnetic stripe)
escutcheon
assembly parts list**

Refer to [Figure 5.4](#) and the table below to find the part you need.

Item	Qty.	WAMS Part No.	2000 Series Part No.	Description
1	1	B82267	B82267	Housing gasket
2	1	B82735	B82735	Exit device bearing
3	1	A82719	A82719	Battery cover screw (#4-40 × 1" Phillips flat head)
4	3	A82724	A82724	Mounting plate screw (#8-32 × 5/8" Phillips flat head)
5	1	A82723	A82723	Mounting plate screw (#8-32 × 3/8" Phillips flat head)
6	1	B82736	B82736	Battery cover
7	1	B82734	B82734	Exit device mounting plate
8	2	A82720	A82720	Battery cover pad
9	3	A82272	A82272	Mounting plate screw (#8-32 × 3/8" Phillips flat head)
10	1	B82745	B82745	Quick adapter assembly
11	1	B82738	B82738	Quick adapter rose
12	1	A82265	A82265	Set of 4 batteries (AA alkaline, 1.5V) ^a
13	6	A82245	A82245	Escutcheon assembly screw (#4-40 × 1/4" Phillips pan head)
14	1	3064470	3061490	Circuit board ^b
15	1	A82249	A82249	Reader cable assembly
16	1	A82210	A82210	Magnetic head spring
17	1	A82205	A82205	Magnetic head retaining ring
18	1	B82228	B82228	Magnetic head assembly
19	1	A82207	A82207	Magnetic head pivot pin
20	1	B82215	B82215	Reader housing ^c
21	1	A82202	A82202	Left bezel spring
22	1	A82201	A82201	Right bezel spring
23	1	B82546	B82546	Keypad assembly
24	4	A82206	A82206	Keyboard mounting screw (#4-40 × 1/4" Phillips flat head)
25	1	B82242	B82242	Set of keypad keys ^c
26	1	B82229	B82229	Keypad bezel
27	1	3064554	—	Antenna assembly
not shown	1	—	B82243	IR window
28	1	A82208	A82208	Magnetic head pin
29	1	B82222	B82222	Front cover ^c

a. For the part numbers for weatherized batteries, see *Weatherized escutcheon components* on page 5-12. For best performance, use Duracell or Energizer batteries.

b. For the part numbers for weatherized circuit boards, see *Weatherized escutcheon components* on page 5-12.

c. Specify finish (gray, black, or satin chrome).

DUAL VALIDATION READER (KEYPAD AND PROXIMITY)

Dual validation reader (keypad and proximity) escutcheon assembly exploded view

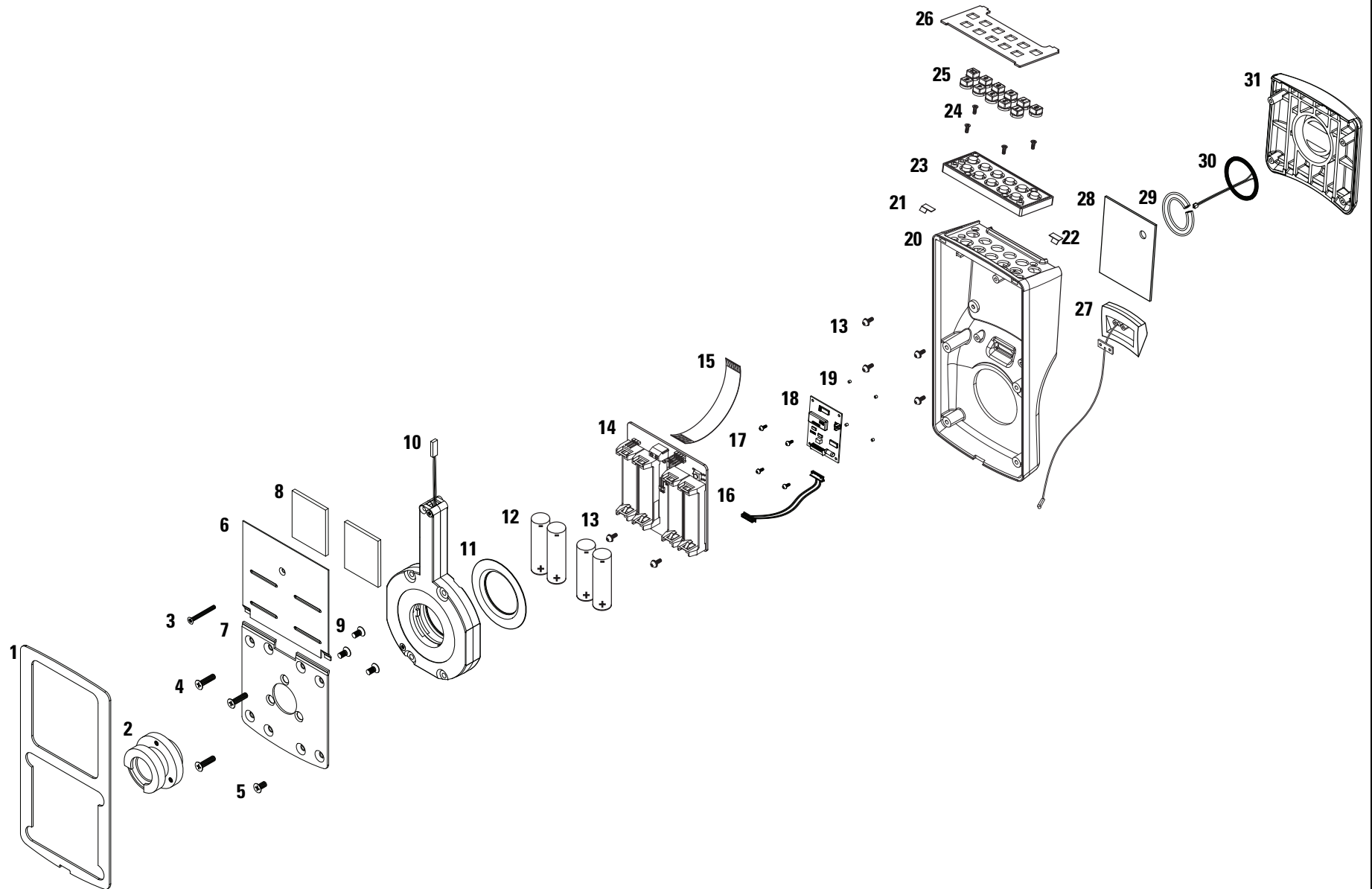


Figure 5.5 Dual validation reader (keypad and proximity) escutcheon assembly (WAMS shown)

**Dual validation
reader (keypad and
proximity)
escutcheon
assembly parts list**

Refer to [Figure 5.5](#) and the table below to find the part you need.

Item	Qty.	WAMS Part No.	2000 Series Part No.	Description
1	1	B82267	B82267	Housing gasket
2	1	B82735	B82735	Exit device bearing
3	1	A82719	A82719	Battery cover screw (#4-40 × 1" Phillips flat head)
4	3	A82724	A82724	Mounting plate screw (#8-32 × 5/8" Phillips flat head)
5	1	A82723	A82723	Mounting plate screw (#8-32 × 3/8" Phillips flat head)
6	1	B82736	B82736	Battery cover
7	1	B82734	B82734	Exit device mounting plate
8	2	A82720	A82720	Battery cover pad
9	3	A82272	A82272	Mounting plate screw (#8-32 × 3/8" Phillips flat head)
10	1	B82745	B82745	Quick adapter assembly
11	1	B82738	B82738	Quick adapter rose
12	1	A82265	A82265	Set of 4 batteries (AA alkaline, 1.5V) ^a
13	6	A82245	A82245	Escutcheon assembly screw (#4-40 × 1/4" Phillips pan head)
14	1	3064470	3061490	Circuit board ^b
15	1	A82249	A82249	Reader cable assembly
16	1	3062138	3062138	Proximity reader cable assembly
17	4	3062955	3062955	Proximity reader circuit board screw (#2-56 Phillips pan head)
18	1	3062096	3062096	Proximity reader circuit board
19	4	3062211	3062211	Spacer
20	1	B82214	B82214	Reader housing ^c
21	1	A82202	A82202	Left bezel spring
22	1	A82201	A82201	Right bezel spring
23	1	B82546	B82546	Keypad assembly
24	4	A82206	A82206	Keyboard mounting screw (#4-40 × 1/4" Phillips flat head)
25	1	B82242	B82242	Set of keypad keys ^c
26	1	B82229	B82229	Keypad bezel
27	1	3064554	—	Antenna assembly
not shown	1	—	B82243	IR window
28	1	A82291	A82291	Reader cover gasket
29	1	3062337	2062337	Clear tubing
30	1	B82293	B82293	Proximity reader antenna
31	1	B82223	B82223	Front cover ^c

a. For the part numbers for weatherized batteries, see *Weatherized escutcheon components* on page 5-12. For best performance, use Duracell or Energizer batteries.

b. For the part numbers for weatherized circuit boards, see *Weatherized escutcheon components* on page 5-12.

c. Specify finish (gray, black, or satin chrome).

WEATHERIZED ESCUTCHEON COMPONENTS

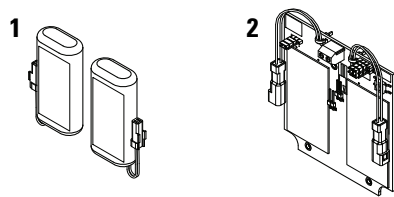


Figure 5.6 Weatherized escutcheon components

Weatherized
escutcheon
components list

Weatherized escutcheon assemblies include all of the components listed for the corresponding standard escutcheon assembly except for the battery pack and circuit board. Refer to [Figure 5.6](#) and the table below to find the part you need.

Item	Qty.	WAMS	2000 Series	500 Series	Description
		Part No.	Part No.	Part No.	
1	2	3092031	3092031	3092031	Weatherized battery pack (alkaline 3V)
2	1	3103378	3092005	3109736	Weatherized circuit board ^a

a. The weatherized circuit board is not sold individually. It is provided with weatherized housing assemblies.

ADAPTER PLATE KITS

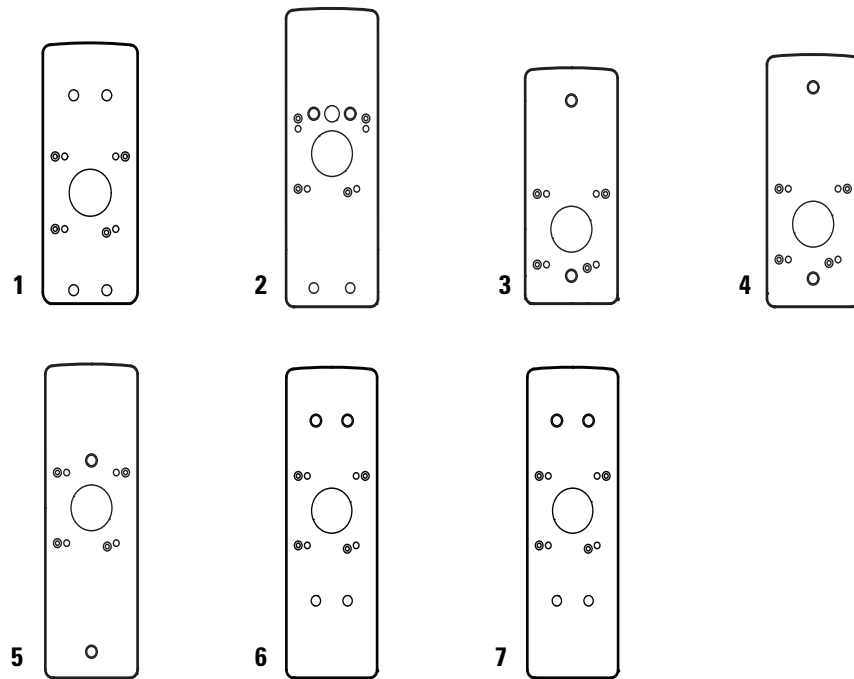


Figure 5.7 Adapter plates for exit device hardware trim

Adapter plate kits list

Refer to [Figure 5.7](#) and the table below to find the kit you need.

Kit	Part No.	Description
1	3108732	CY1 (Corbin Russwin / Yale) adapter plate kit ^a
2	3102835	PH2 (Precision Hardware) adapter plate kit ^b
3	3103190	SA7 (Sargent / Arrow 8800 Series) adapter plate kit ^c
4	3103514	SA8 (Sargent / Arrow 8888 Series) adapter plate kit ^d
5	3108690	SA9 (Sargent / Arrow 9800 Series) adapter plate kit ^e
6	3125234	VD8 (Von Duprin 98 and 99 Series) adapter plate kit ^f
7	3102437	VD9 (Von Duprin 98 and 99 Series) adapter plate kit ^g

a. Includes one 11818 adapter plate, one B83020 tailpiece kit, three B82275 screws, one B82276 screw, and four 11847 screws.

b. Includes one B82795 adapter plate, one B83020 tailpiece kit, three B82275 screws, one B82276 screw, five A82527 screws, four B82793 screws, four A82791 screws, and one A82524 screw.

c. Includes one B82531 adapter plate, one A82535 tailpiece kit, three B82275 screws, one B82276 screw, and four A82544 screws.

d. Includes one B82533 adapter plate, one A82535 tailpiece kit, three B82275 screws, one B82276 screw, four A82543 screws, and four A82544 screws.

e. Includes one B82784 adapter plate, one A82535 tailpiece kit, three B82275 screws, one B82276 screw, two A82543 screws, and two A82544 screws.

f. Includes one B82780 adapter plate, three B82275 screws, one B82276 screw, and four B82793 screws.

g. Includes one B82780 adapter plate, one A82787 tailpiece kit, three B82275 screws, one B82276 screw, and four B82793 screws.

TAILPIECE KITS

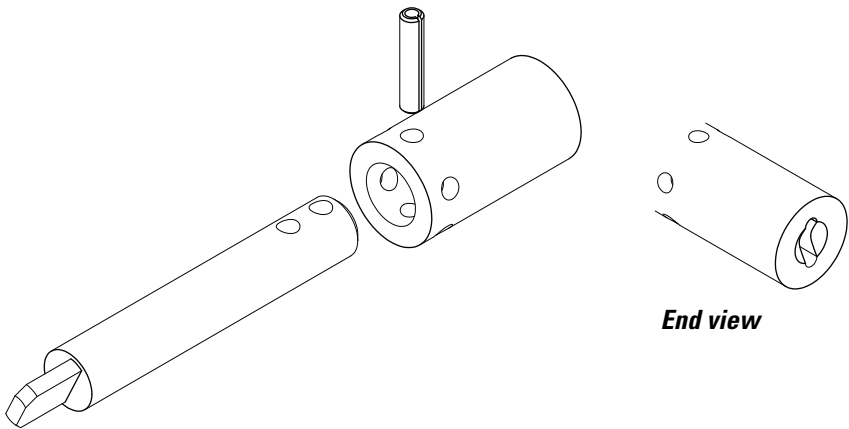
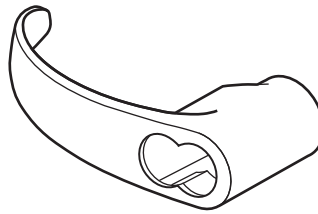


Figure 5.8 Tailpiece kit for exit device hardware trim

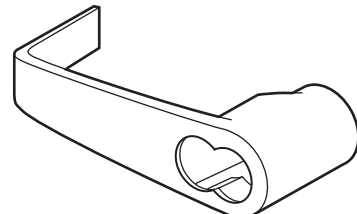
Tailpiece kits list Refer to [Figure 5.8](#) and the table below to find the part you need.

Kit No.	Description
B83020	Corbin Russwin / Yale / Precision Hardware tailpiece kit
A82535	Sargent tailpiece kit
A82841	Von Duprin 33 Series tailpiece kit
A82787	Von Duprin 98 and 99 Series tailpiece kit

OUTSIDE LEVERS



#14 keyed lever



#15 keyed lever

Figure 5.9 Outside levers for exit device hardware trim

Outside levers list Refer to [Figure 5.9](#) and the table below to find the part you need.

Item	Finish and Part Number			
	612 ^a	613 ^b	626 ^c	690 ^d
#14 keyed lever	3113810	3113779	3116282	3114699
#15 keyed lever	3116240	3116209	3115080	3114615
#14 non IC	3114416	3114374	3114332	3114657
#15 non IC	3114290	3114259	3114217	3114573

a. Satin bronze, clear coated finish.

b. Oxidized satin bronze, oil rubbed finish.

c. Satin chromium plated finish.

d. Dark bronze, powder coated finish.

OTHER COMPONENTS

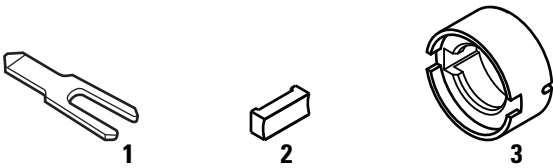


Figure 5.10 Other components for exit device hardware trim

Other components
list

Refer to [Figure 5.10](#) and the table below to find the part you need.

Item	Qty.	Part No.	Description
1	1	B56165	7KC throw member
2	1	A82704	6-pin metal insert
3	1	A82727	D80 driver
not shown	1	C83001	I/C lever spindle

6

WALL MOUNT SYSTEM COMPONENTS

This chapter provides exploded diagrams of the reader assemblies for OMNILOCK Wall Mount Systems. Weatherized and extreme weatherized reader components, as well as 5E cylinders for use with wall mount systems are described. This chapter also includes part numbers for all field-serviceable parts.

KEYPAD READER ESCUTCHEON ASSEMBLY Keypad reader escutcheon assembly exploded view

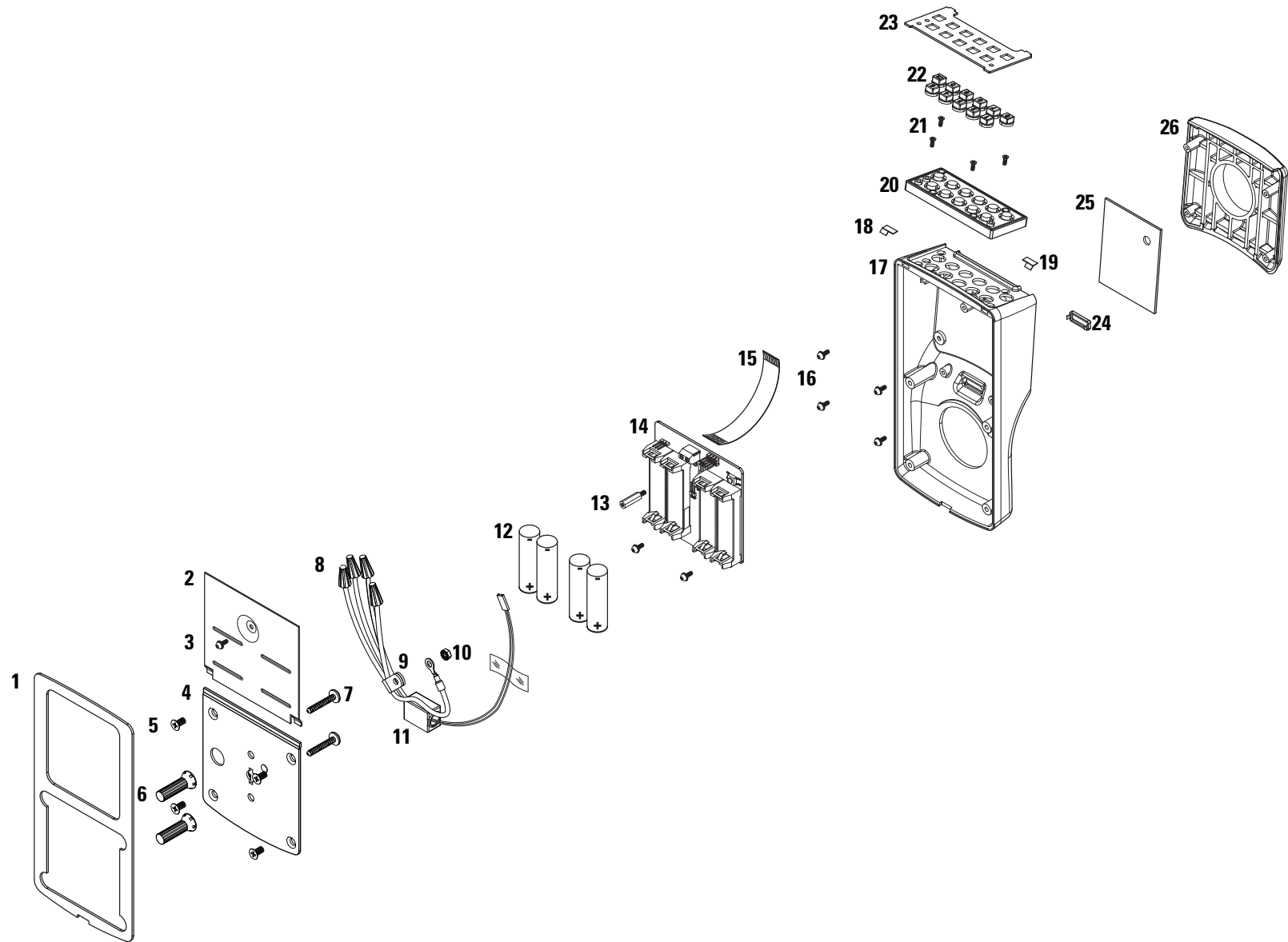


Figure 6.1 Keypad reader escutcheon assembly (500 series shown)

Keypad reader escutcheon assembly parts list

Refer to [Figure 6.1](#) and the table below to find the part you need.

Item	Qty.	500 Series Part No.	Description
1	1	B82267	Housing gasket
2	1	A82271	Battery cover ^a
3	3	A82245	Escutcheon assembly screw (#4-40 × 1/4" Phillips pan head)
4	1	B82548	Wall mounting plate
5	4	B82272	Mounting plate screw (#8-32 × 3/8" Phillips flat head)
6	2	A82557	Hollow wall anchor
7	2	A82332	self tapping screw <i>or</i>
not shown	2	A82549	Masonry anchor screw
8	1	A82556	Wire assembly
9	1	A82553	Cable clamp
10	1	A82555	Nut
11	1	B82551	Wire relay assembly
12	1	A82265	Set of 4 batteries (AA alkaline, 1.5V) ^b
13	1	A82086	Battery cover standoff
14	1	3108402	Circuit board ^c
15	1	A82249	Reader cable assembly
16	4	A82288	Cover mounting screw (Phillips pan head)
17	1	B82227	Reader housing
18	1	A82202	Left bezel spring
19	1	A82201	Right bezel spring
20	1	B82547	Keypad assembly
21	4	A82206	Keyboard mounting screw (#4-40 × 1/4" Phillips flat head)
22	1	B82242	Set of black keypad keys <i>or</i>
not shown	1	B82592	Set of gray keypad keys ^d
23	1	B82230	Keypad bezel
24	1	B82243	IR window
25	1	A82291	Reader cover gasket
26	1	B82221	Front cover

a. For the part number for extreme weatherized battery covers, see *Extreme weatherized escutcheon components* on page 6-9.

b. For the part numbers for weatherized batteries, see *Weatherized components* on page 6-8. For best performance, use Duracell or Energizer batteries.

c. For the part numbers for weatherized circuit boards, see *Weatherized components* on page 6-8. For part numbers for extreme weatherized circuit boards, see *Extreme weatherized escutcheon components* on page 6-9.

d. The gray and chrome housing finishes use gray keypad keys.

DUAL VALIDATION READER (KEYPAD AND MAGNETIC STRIPE)

Dual validation reader (keypad and magnetic stripe escutcheon) assembly exploded view

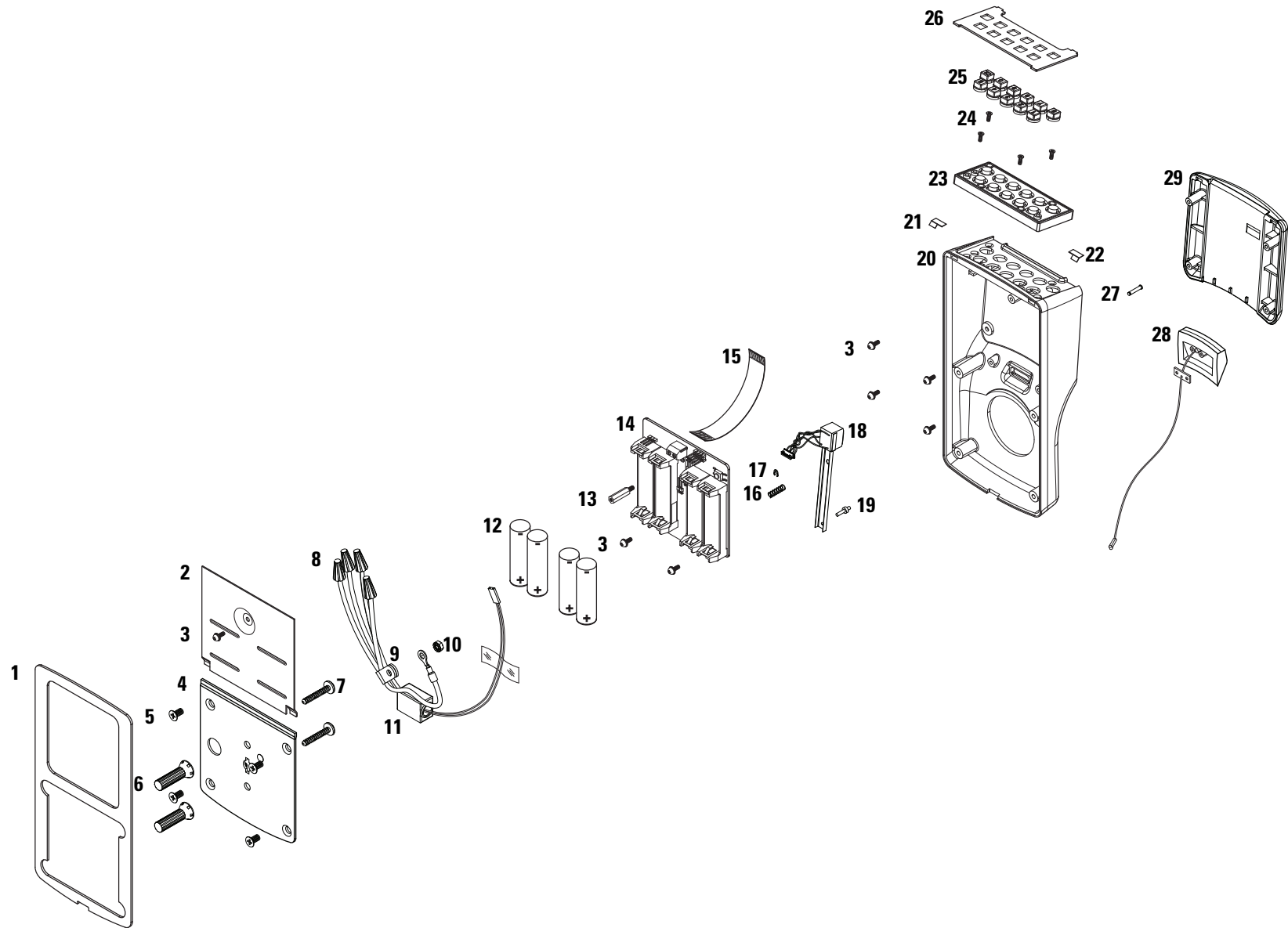


Figure 6.2 Dual validation reader (keypad and magnetic stripe) escutcheon assembly (WAMS shown)

**Dual validation
reader (keypad and
magnetic stripe)
escutcheon
assembly parts list**

Refer to [Figure 6.2](#) and the table below to find the part you need.

Item	Qty.	WAMS Part No.	2000 Series Part No.	Description
1	1	B82267	B82267	Housing gasket
2	1	A82271	A82271	Battery cover ^a
3	7	A82245	A82245	Escutcheon assembly screw (#4-40 × 1/4" Phillips pan head)
4	1	B82548	B82548	Wall mounting plate
5	4	B82272	B82272	Mounting plate screw (#8-32 × 3/8" Phillips flat head)
6	2	A82557	A82557	Hollow wall anchor
7	2	A82332	A82332	self tapping screw <i>or</i>
not shown	2	A82549	A82549	Masonry anchor screw
8	1	A82556	A82556	Wire assembly
9	1	A82553	A82553	Cable clamp
10	1	B82551	B82551	Wire relay assembly
11	1	A82555	A82555	Nut
12	1	A82265	A82265	Set of 4 batteries (AA alkaline, 1.5V) ^b
13	1	A82086	A82086	Battery cover standoff
14	1	3064470	3061490	Circuit board ^c
15	1	A82249	A82249	Reader cable assembly
16		A82210	A82210	Magnetic head spring
17		A82205	A82205	Magnetic head retaining ring
18	1	B82228	B82228	Magnetic head assembly
19		A82207	A82207	Magnetic head pivot pin
20	1	B82227	B82227	Reader housing ^d
21	1	A82202	A82202	Left bezel spring
22	1	A82201	A82201	Right bezel spring
23	1	B82546	B82546	Keypad assembly
24	4	A82206	A82206	Keyboard mounting screw (#4-40 × 1/4" Phillips flat head)
25	1	B82242	B82242	Set of keypad keys ^d
26	1	B82229	B82229	Keypad bezel
27	1	A82208	A82208	Magnetic head pin
28	1	3064554	—	Antenna assembly
not shown	1	—	B82243	IR window
29	1	B82222	B82222	Front cover ^d

a. For the part number for extreme weatherized battery covers, see *Extreme weatherized escutcheon components* on page 6-9

b. For the part numbers for weatherized batteries, see *Weatherized components* on page 6-8. For best performance, use Duracell or Energizer batteries.

c. For the part numbers for weatherized circuit boards, see *Weatherized components* on page 6-8. For part numbers for extreme weatherized circuit boards, see *Extreme weatherized escutcheon components* on page 6-9

d. Specify finish (gray, black, or satin chrome).

DUAL VALIDATION READER (KEYPAD AND PROXIMITY)

Dual validation reader (keypad and proximity) escutcheon assembly exploded view

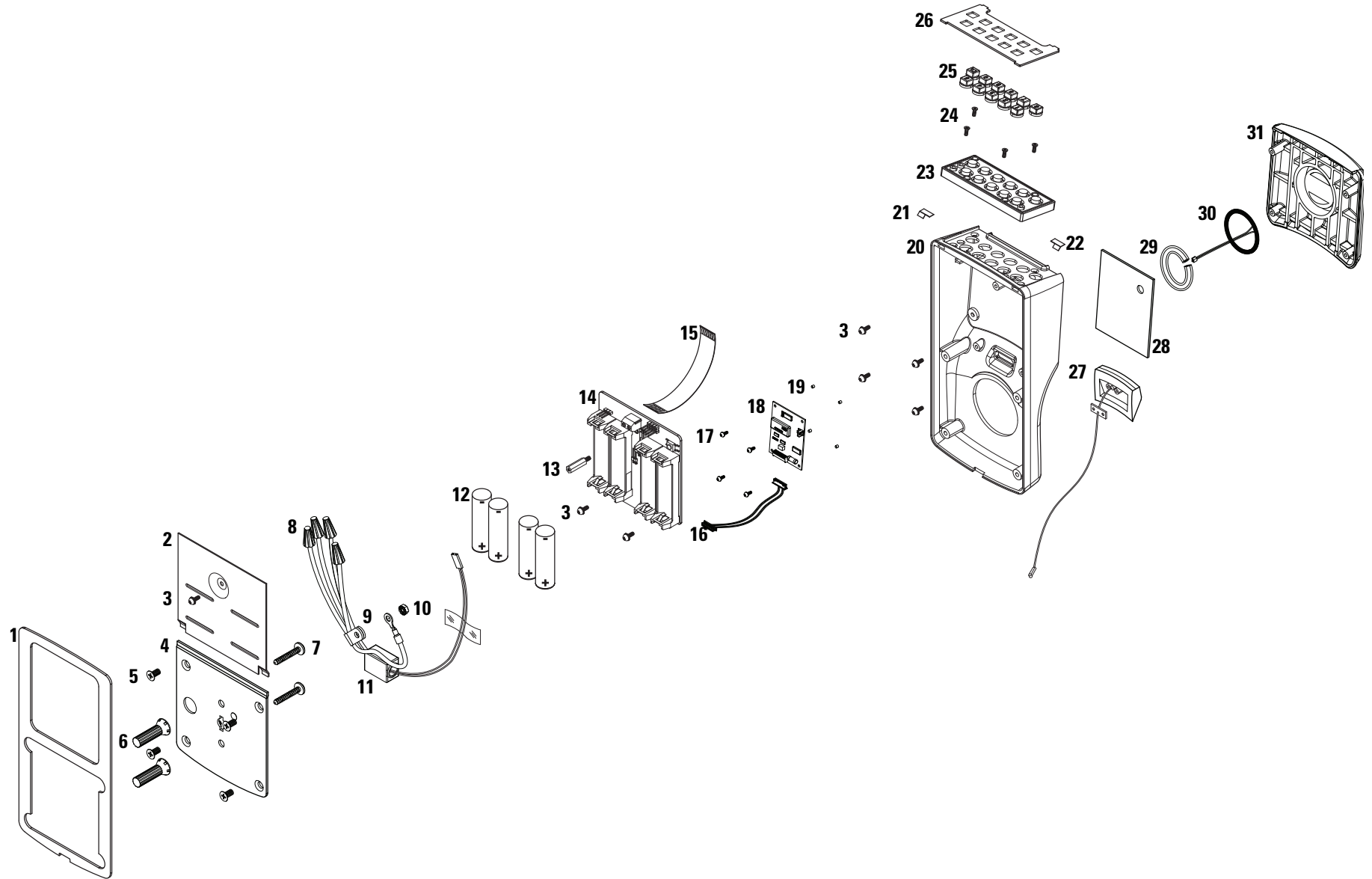


Figure 6.3 Dual validation reader (keypad and proximity) escutcheon assembly (WAMS shown)

**Dual validation
reader (keypad and
proximity)
escutcheon
assembly parts list**

Refer to [Figure 6.3](#) and the table below to find the part you need.

		WAMS	2000 Series	
Item	Qty.	Part No.	Part No.	Description
1	1	B82267	B82267	Housing gasket
2	1	A82271	A82271	Battery cover ^a
3	7	A82245	A82245	Escutcheon assembly screw (#4-40 × 1/4" Phillips pan head)
4	1	B82548	B82548	Wall mounting plate
5	4	B82272	B82272	Mounting plate screw (#8-32 × 3/8" Phillips flat head)
6	2	A82557	A82557	Hollow wall anchor
7	2	A82332	A82332	self tapping screw <i>or</i>
not shown	2	A82549	A82549	Masonry anchor screw
8	1	A82556	A82556	Wire assembly
9	1	A82553	A82553	Cable clamp
10	1	B82551	B82551	Wire relay assembly
11	1	A82555	A82555	Nut
12	1	A82265	A82265	Set of 4 batteries (AA alkaline, 1.5V) ^b
13	1	A82086	A82086	Battery cover standoff
14	1	3064470	3061490	Circuit board ^c
15	1	A82249	A82249	Reader cable assembly
16	1	3062138	3062138	Proximity reader cable assembly
17	4	A82224	A82224	Proximity reader circuit board screw (#2-56 Phillips pan head)
18	1	3062096	3062096	Proximity reader circuit board
19	4	A82225	A82225	Spacer
20	1	B82203	B82203	Proximity reader housing ^d
21	1	A82202	A82202	Left bezel spring
22	1	A82201	A82201	Right bezel spring
23	1	B82546	B82546	Keypad assembly
24	4	A82206	A82206	Keyboard mounting screw (#4-40 × 1/4" Phillips flat head)
25	1	B82242	B82242	Set of keypad keys ^d
26	1	B82229	B82229	Keypad bezel
27	1	3064554	—	Antenna assembly
not shown	1	—	B82243	IR window
28	1	A82291	A82291	Cover gasket
29	1	3062337	2062337	Clear tubing
30	1	B82293	B82293	Proximity reader antenna
31	1	B82223	B82223	Front cover ^d

a. For the part number for extreme weatherized battery covers, see *Extreme weatherized escutcheon components* on page 6-9.

b. For the part numbers for weatherized batteries, see *Weatherized components* on page 6-8. For best performance, use Duracell or Energizer batteries.

c. For the part numbers for weatherized circuit boards, see *Weatherized components* on page 6-8. For part numbers for extreme weatherized circuit boards, see *Extreme weatherized escutcheon components* on page 6-9.

d. Specify finish (gray, black, or satin chrome).

WEATHERIZED COMPONENTS

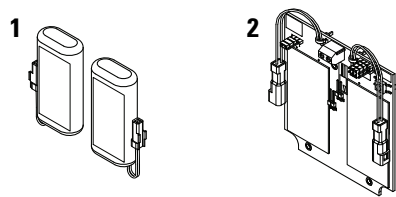


Figure 6.4 Weatherized components

Weatherized components parts list

Weatherized escutcheon assemblies include all of the components listed for the corresponding standard escutcheon assembly except for the battery pack and circuit board. Refer to [Figure 6.4](#) and the table below to find the part you need.

Item	Qty.	WAMS	2000Series	500 Series	Description
		Part No.	Part No.	Part No.	
1	2	3092031	3092031	3092031	Weatherized battery pack (alkaline 3V)
2	1	3103378	3092005	3109736	Weatherized circuit board ^a

a. The weatherized circuit board is not sold individually. It is provided with weatherized housing assemblies.

EXTREME WEATHERIZED ESCUTCHEON COMPONENTS

Extreme weatherized escutcheon components exploded view

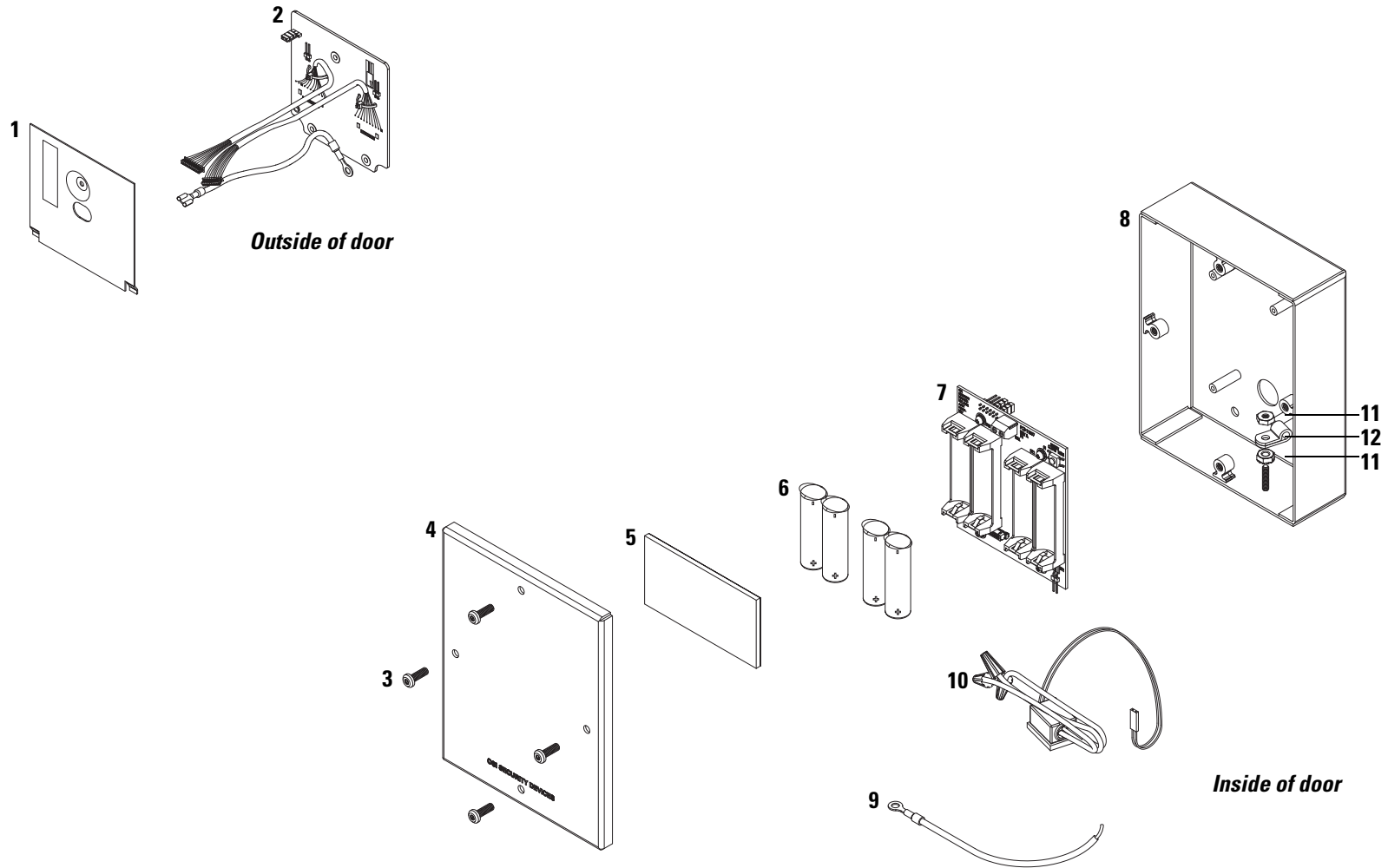


Figure 6.5 Extreme weatherized escutcheon components

Extreme weatherized escutcheon parts list

The extreme weatherized option is available for OMNILOCK 500 Series and 2000 Series Locks. Extreme weatherized escutcheon assemblies include all of the components listed for the corresponding standard escutcheon assembly except for the battery cover and circuit board. They also include the additional components listed below. Refer to [Figure 6.5](#) and the table below to find the part you need

Item	Qty.	2000 Series	500 Series	Description
		Part No.	Part No.	
1	1	3108334	3107901	Weatherized circuit board ^a
2	1	B82856	B82856	Weatherized reader battery cover
3	4	A82245	A82245	Screw (#4-40 × 1/4" Phillips pan head)
4	1	B82849	B82849	Housing cover
5	1	A82269	A82269	Foam pad
6	1	A82265	A82265	Set of 4 batteries (AA alkaline, 1.5V)
7	1	3092430	3092430	Interconnecting circuit board
8	1	B82848	B82848	Housing
9	1	A82487	A83017	Wire assembly
10	1	B82551	B82551	Wire relay assembly
11	2	A82555	A82555	Nut
12	1	A82553	A82553	Nylon cable clamp
not shown	6	A82557	A82557	Hollow wall anchor
not shown	6	A82332	A82332	Self tapping screw <i>or</i>
not shown	6	A82549	A82549	Masonry anchor screw

a. The weatherized circuit board is not sold individually. It is provided with weatherized housing assemblies.

5E CYLINDER COMPONENTS

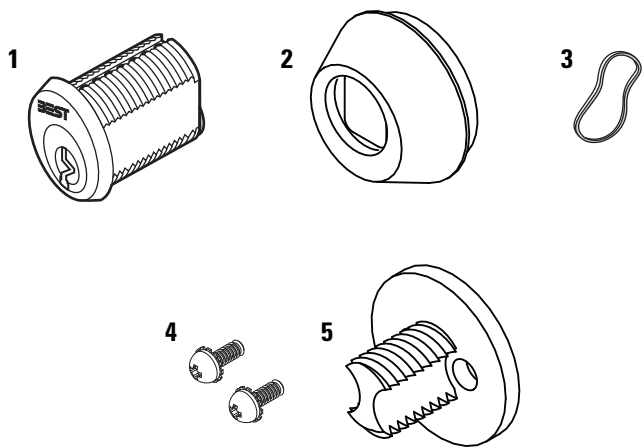


Figure 6.6 5E cylinder components for wall mount systems

**5E cylinder
components list**

Refer to [Figure 6.6](#) and the table below to find the part you need.

Item	Qty.	Part No.	Description
1	1	3115797	5E cylinder ^a
2	1	B82558	Collar
3	1	A82559	Spring wave washer
4	2	A82245	Screw (#4-40 × 1/4" Phillips pan head)
5	1	B82560	Tailpiece

a. Cylinders are keyed alike and come with two operating keys.

7

OTHER COMPONENTS

This chapter provides diagrams and part numbers for the following OMNILOCK items:

- programming devices and readers
- wireless components including single door controllers, portal gateways, power-over-ethernet devices, transformers, modems, and antenna kits
- replacement battery packs
- service tools.

PROGRAMMING DEVICES, READERS, AND ACCESS CARDS

2000 Series management software

Refer to the table below to find the part you need.

Nomenclature	Description
OMS-11278	Administrator's Kit for OM2000 Magnetic Card Systems ^a
OMS-11628	Administrator's Kit for OP2000 Proximity Card Systems ^b
OMS-11687	Database Import Utility

- The System Software (for an approved PDA) supports up to 65,000 users and 65,000 locks per facility. The kit includes the administrator's guide, magnetic stripe default programming cards, and manager reference cards.
- The System Software (for an approved PDA) supports up to 65,000 users and 65,000 locks per facility. The kit includes the administrator's guide, proximity default programming cards, and manager reference cards.

WAMS management software

Refer to the table below to find the part you need.

Nomenclature	Description
OMS-12418-001	WAMS System Software Kit ^a

- WAMS System Software (for a PC) supports up to 64 readers with any combination of portal gateways (65,000 cardholder / ID capacity). The kit includes the user manual / administrator's guide, WAMS startup CD, default programming card, and a blank card for systems without buttons (for Magnetic Stripe and Proximity readers).

Card readers and encoders



Track 2 magnetic card reader



Track 1-2-3 magnetic stripe
card encoder / decoder



Proximity card
enrollment reader

Figure 7.1 Card encoders

Card readers and encoders parts list

Refer to [Figure 7.1](#) and the table below to find the part you need.

Nomenclature	Description
OMD-11274	Track 2 magnetic card reader
BE-NTDMSR20633BA	Track 1-2-3 magnetic stripe card encoder / decoder
OMD-11507-002	Proximity card enrollment reader

WIRELESS COMPONENTS

Single door controller



Single door controller with half wave dipole antenna



Single door controller sign-on keypad

Figure 7.2 Single door controller

Single door controller parts list

Refer to [Figure 7.2](#) and the table below to find the part you need.

Nomenclature	Description
OMX-SDC	Single door controller with half wave dipole antenna
WQD-WACPAD	Single door controller sign-on keypad

Portal gateway



Figure 7.3 Portal gateway

Portal gateway parts list

Refer to [Figure 7.3](#) and the table below to find the part you need.

Nomenclature	Description
OMX-12811	Basic portal gateway

Power-over-ethernet devices

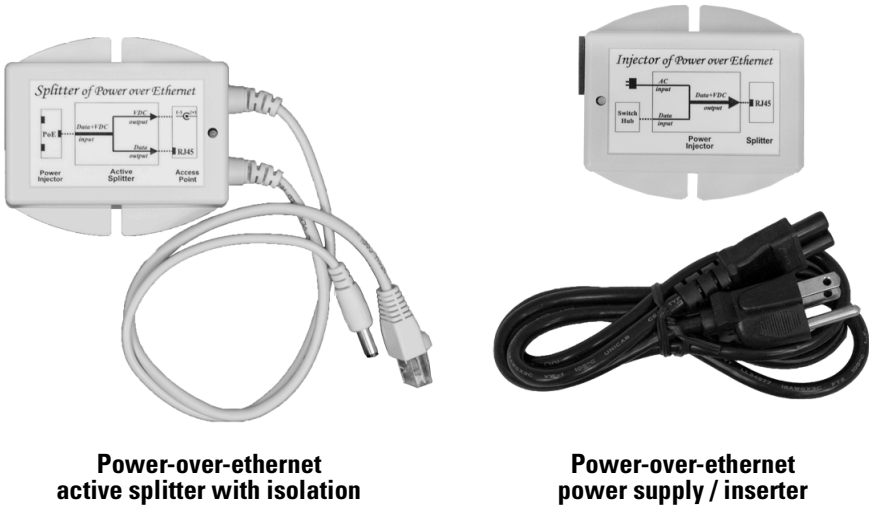


Figure 7.4 Power-over-ethernet devices

Power-over-ethernet parts list

Refer to [Figure 7.4](#) and the table below to find the part you need.

Nomenclature	Description
OMD-12928-001	Power-over-ethernet active splitter with isolation
OMD-12927-001	Power-over-ethernet power supply / inserter

Transformer



Figure 7.5 Transformer

Transformer parts list

Refer to [Figure 7.5](#) and the table below to find the part you need.

Nomenclature	Description
OMD-12827	Plug-in transformer

Modem



Figure 7.6 Modem

Modem parts list

Refer to [Figure 7.6](#) and the table below to find the part you need.

Nomenclature	Description
OMD-12873-001	Dial-up to ethernet modem with power adapter

Antenna kits

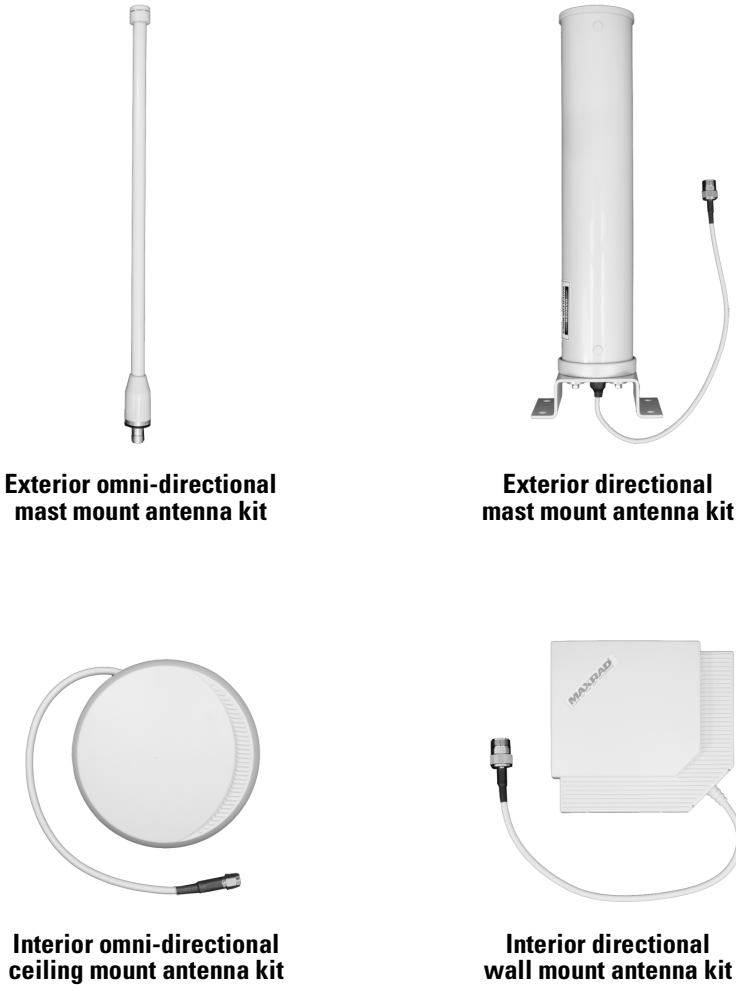


Figure 7.7 Antenna kits

Antenna kits list

Refer to [Figure 7.7](#) and the table below to find the part you need.

Nomenclature	Description
WQD-AEMO	Exterior omni-directional mast mount antenna kit ^a
WQD-AEMD	Exterior directional mast mount antenna kit ^b
WQD-ACMO	Interior omni-directional ceiling mount antenna kit ^c
WQD-AWMD	Interior directional wall mount antenna kit ^d

- a. Includes antenna, wall and post mounts, and a 20’ cable to connect the antenna to a single door controller or portal gateway.
- b. Includes antenna, wall and post mounts, and a 20’ cable to connect the antenna to a single door controller or portal gateway.
- c. Includes antenna, standard mount, and a 20’ cable to connect the antenna to a portal gateway.
- d. Includes antenna, standard mount, and a 20’ cable to connect the antenna to a portal gateway.

Wireless
conversion kit

Wireless conversion kit parts list

Refer to the table below to find the part you need.

Nomenclature	Description
OMD-12657-01	Non-weatherized conversion kit

BATTERY PACKS



Weatherized battery pack



OM250 Battery Pack

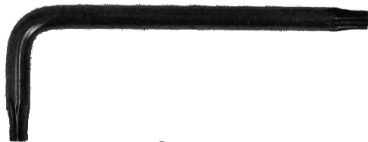
Figure 7.8 Battery pack

Battery packs parts list

Refer to [Figure 7.8](#) and the table below to find the part you need.

Nomenclature	Description
OMD-12000	Weatherized battery pack (alkaline 3V)
OMD-6610	OM250 lithium battery pack

TOOLS



TORX® T15 wrench

Figure 7.9 Tools

Tools parts list

Refer to [Figure 7.9](#) and the table below to find the part you need.

Part No.	Description
A82790	TORX® T15 wrench

SITE SURVEY KIT AND BEACONS

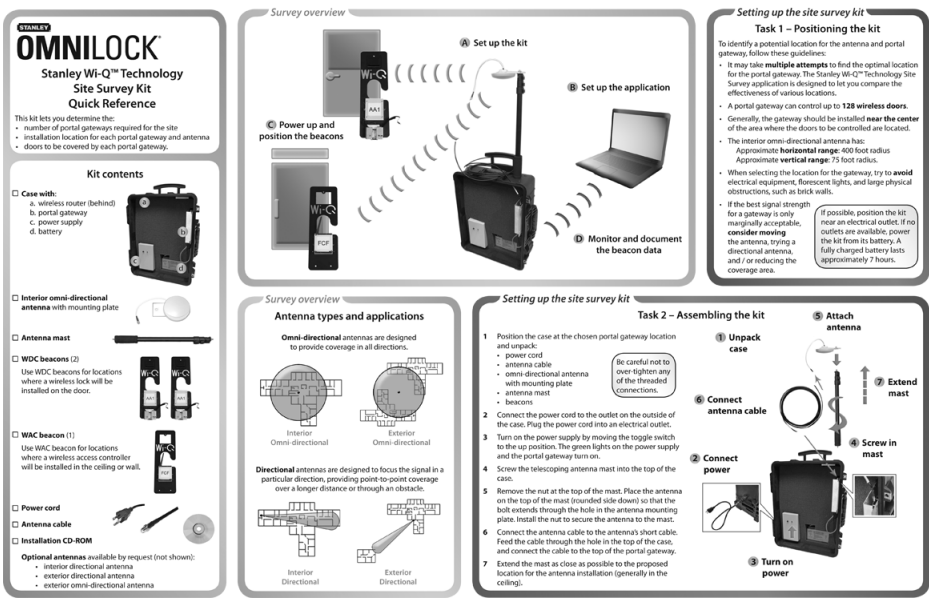


Figure 7.10 Site survey kit and beacons components

Site survey kit and beacons parts list

Refer to [Figure 7.10](#) and the table below to find the part you need.

Nomenclature or		
Part No.	Description	
OMD-SURVEY	Site survey kit with 3 beacons	
C82310	Site survey kit without beacons	
3112597	Set of three wireless beacons	
C83010	Single wireless beacon	

A

GLOSSARY

Armored front	The mortise lock front and faceplate designed to prevent tampering with the cylinder clamp screw and case mounting screws.
Backset	The distance from the faceplate to the center of the cylinder or lever.
Cam	See <i>Cylinder cam</i> .
Card reader	A device that reads the information encoded on magnetic stripe cards or proximity cards.
Core	See <i>Interchangeable core</i> .
Cylinder	See <i>Mortise cylinder</i> .
Cylinder cam	A rotating part of a keyed cylinder that drives the deadbolt or latchbolt.
Cylinder ring	A metal ring that fits around the cylinder and protects it from tampering. The cylinder ring also spaces the cylinder out to the right position.
Door bevel	The angle on the edge of a door.
Door status sensor	A sensor that monitors whether the door is open or closed. This sensor is used to detect a forced entry, or a door that is propped open.
Escutcheon	A surface-mounted plate that covers holes that were made in the door for levers and cylinders.
Faceplate	A finished part of a mortise lock that covers the armored front. See <i>Armored front</i> .
Figure-8	The basic shape of the interchangeable core and its housing (door lever, cylinder, padlock, and so forth.). See also <i>Interchangeable core</i> .

Fob	A small device that can be carried on a key ring, has an integrated circuit to which data is encoded, and is used to activate a lock.
Hand of door	The swing direction of the door as viewed from the outside of the door. A right-handed (RH) door is hinged on the right and swings inward. A left-handed (LH) door is hinged on the left and swings inward. If either of these doors swings outward, it becomes a right-hand reverse bevel (RHRB) door, or a left-hand reverse bevel (LHRB) door respectively.
Interchangeable core	A figure-8 shaped device that contains all mechanical parts for a masterkeyed system. The interchangeable core can be removed by a special control key and can be recombined without disassembling the lock. See also <i>Figure-8</i> .
Key override	An optional feature that enables an authorized user (in an emergency) to bypass all electronic locking features, and open the lock with a mechanical key.
Latch status sensor	A sensor that monitors whether the latchbolt is extended or retracted. This sensor can be used in combination with the door status sensor to determine whether the door is fully secure.
Lock function	The way a lock operates.
Magnetic stripe card	A credit-card shaped device that has a magnetic strip to which data is encoded and is used to access a lock.
Mortise cylinder	A threaded lock cylinder that screws directly into the lock case. A key-driven rotating cam, attached to the back, drives the locking mechanism.
Mortise	A rectangular cavity cut into the edge of a door. Also can mean the act of making such a cavity.
Mortise lock	A lock that fits into a mortise. Other locks fit into bored holes or mount to a surface. See also <i>Mortise</i> .
Proximity card	A credit-card shaped device that has an integrated circuit to which data is encoded and is used to activate a lock.
Removable core	See <i>Interchangeable core</i> .
Request-to-exit switch	A switch that allows the user to exit without setting off an alarm. WAMS Locks can be supplied with an internal request-to-exit switch. Turning the inside lever actuates the switch and, when wired to an alarm system, sends a signal to disable or sound an alarm, start a timer, and so forth.
Tailpiece	A part that extends from the back of the cylinder and engages an exit device mechanism.
Template	A precise, detailed hole pattern that serves as a guide for the mortising and drilling of doors and frames.
Wire harness	A group of wires bundled together with connectors at either end.