

# Auto Coin Counter

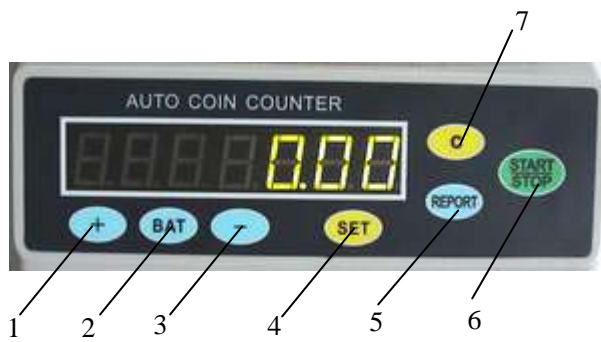
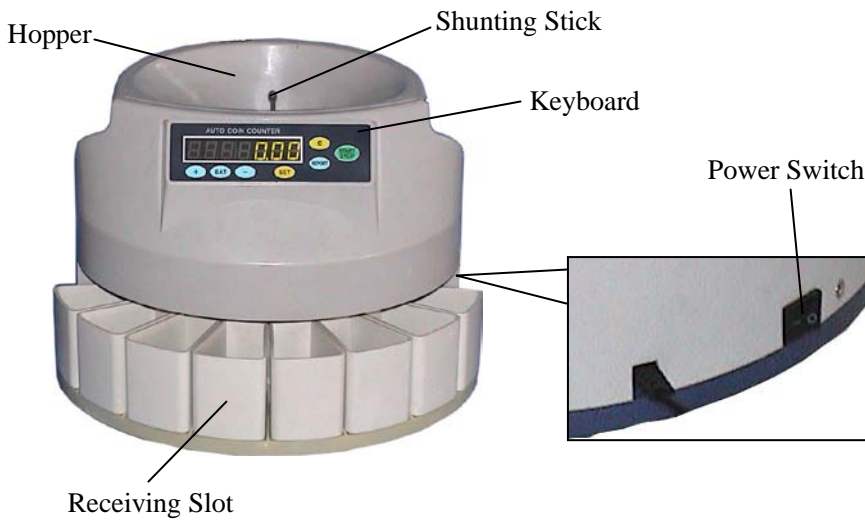
## Service Manual



# CONTENT

<b>I. APPEARANCES</b> -----	3
<b>II. INNER STRUCTURE</b> -----	4
<b>III. PROBLEMS MAY BE ENCOUNTERED</b> -----	5
<b>IV. AUTO COIN COUNTER PARTS LISTING</b> -----	8

# I. APPEARANCES



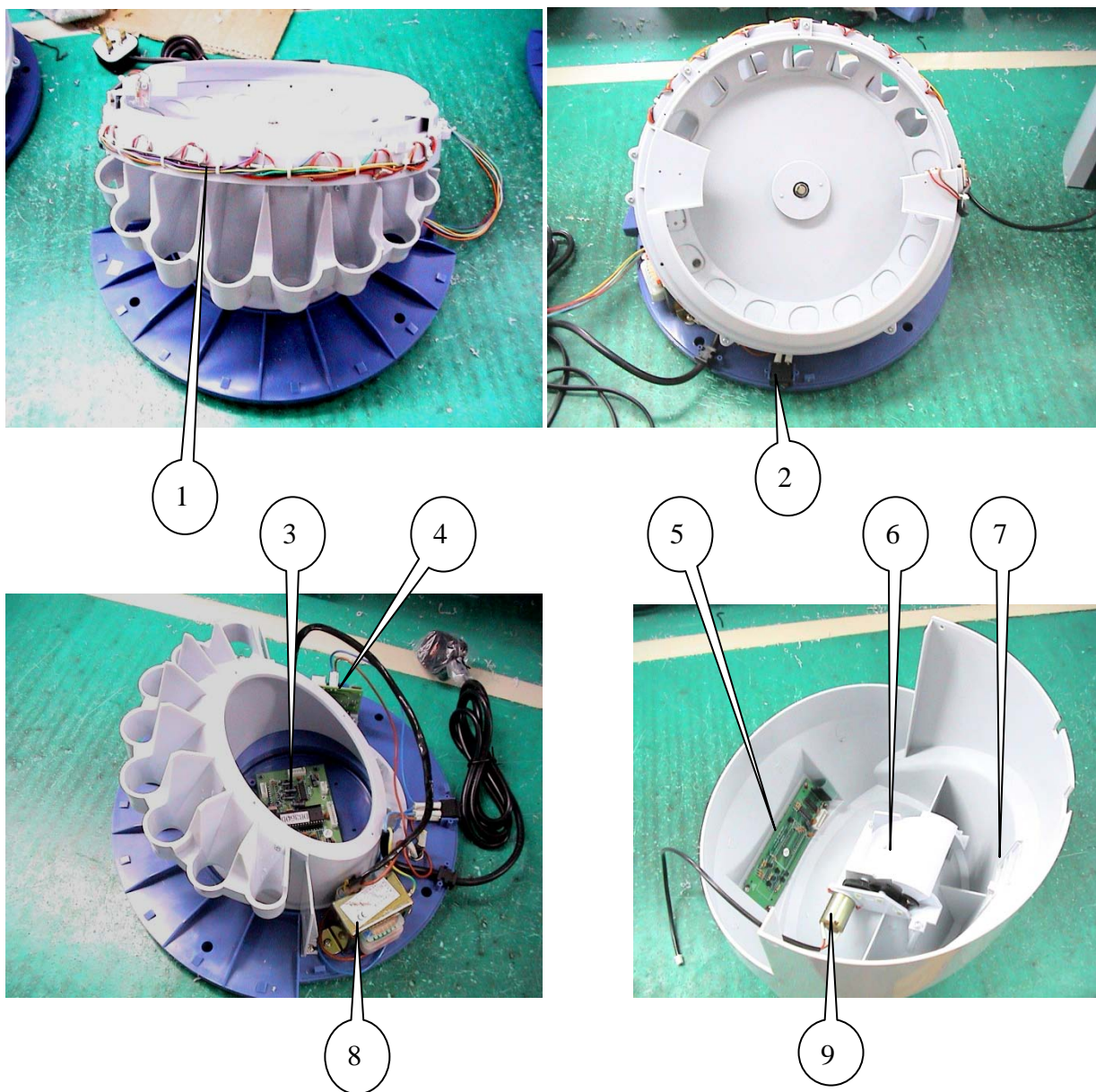
1	“+”KEY	5	REPORT KEY
2	BAT KEY	6	START&STOP KEY
3	“-”KEY	7	CLEAR KEY
4	SET KEY		

## Appearance Description:

1. Hopper  
The place for putting the coins
2. Shunting Stick  
Use for rolling the coins and indicate the capacity of the hopper
3. Keyboard  
Control display. Used to preset optional batch size (up to 4 digits).
4. Receiving Slot  
The place for receiving the different value coins.
5. Power Switch  
To control the power source.
6. Bat Key  
Used to set the batch number (up to 4 digits)

7. “+”KEY  
Used to add the number of presetting the batch number
8. “-”KEY  
Used to reduce the number of presetting the batch number
9. Set Key  
Used to preset the number of the different value coins
10. Clear Key  
Used to return to display total value menu.
11. Report Key  
Used to display the individual value of different coins
12. Start & Stop Key  
Used to start counting or stop counting.

## II. INNER STRUCTURE

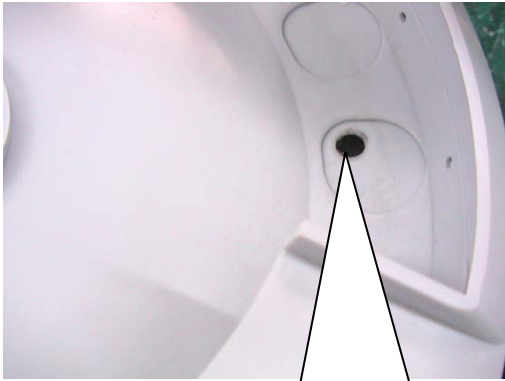


## Inner structure description:

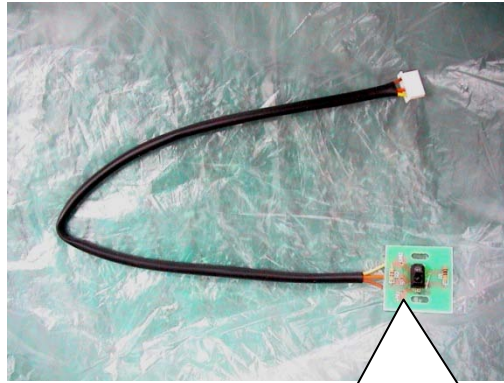
1. Counter Sensors
2. Power Switch.
3. Main Board
4. Power Board
5. Display Board
6. Auto Funnel
7. Back Door
8. Transformer
9. Funnel Motor

## III. PROBLEMS MAY BE ENCOUNTERED

### ● “E0” ERROR :



Coin detecting sensor's glass cover.



**Sensor 1:** Coin detecting sensor.

If the machine display “E0” when power is on, maybe have coins in the machine or the coin detecting sensor's glass cover is too dirty or the coin detecting sensor is error, and then please take out the coins or clean the glass cover or replace the coin detecting sensor function block. (The coin detecting sensor and its glass cover see the picture above.)

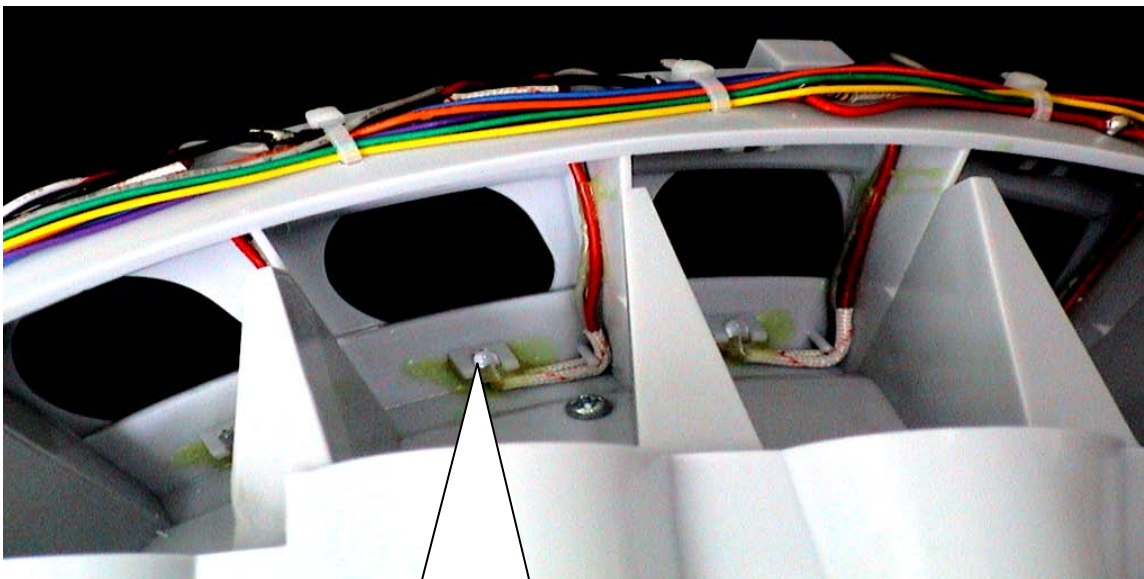
● “E1~E8” ERROR :



The largest size coin counting sensor. If it's bad, the machine will display "E8" when power on.

←-----  
E7,E6,E5,E4,E3,E2

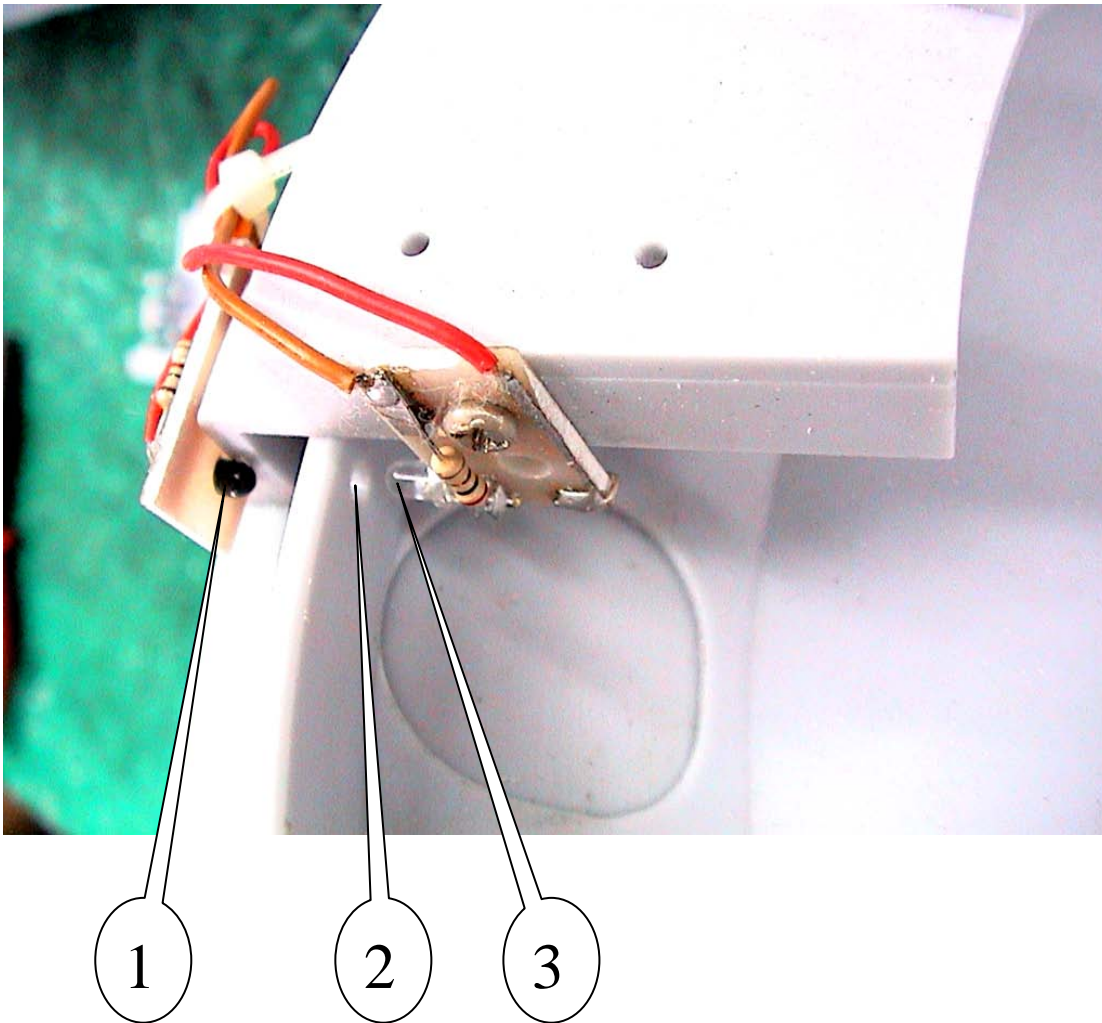
The smallest size coin counting sensor. If it's bad, the machine will display "E1" when power on.



**Sensor 2: Infrared radial diode**

If the machine display "E1"(or "E2"--"E8") when power on, It means the correlative counter sensor is bad. Use a good one instead of it to solve the error. For example the machine display "E7" when power on, it means 0.50EUR counter sensor is bad, as above picture indication, use a good infrared radial diode instead of it. Pay attention the red thread connect with diode anode, the gray thread connect with the diode cathode.

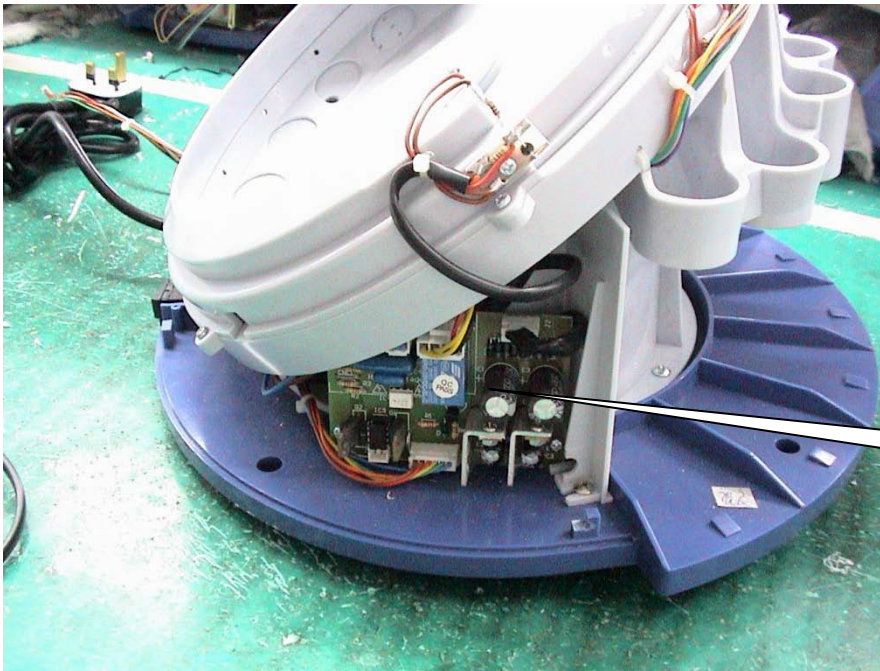
● “EC” ERROR :



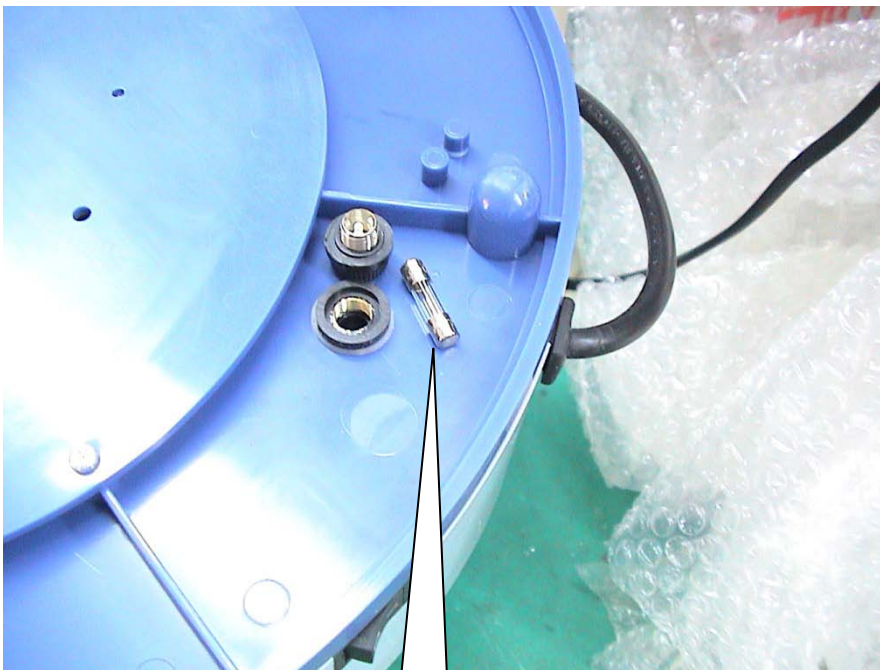
**Sensor 3:** The light receiver(pointer 1) and IR LED(pointer 3)

If the machine display “Ec” when power on, it means the light receiver(see the pointer 1 of the above picture) cannot receive the signal of the IR LED (see the pointer 3 of the above picture). Please adjust the light receiver, IR LED place to make them and the hole (see the pointer 2 of the above picture) in a line or be replaced of them..

● **NO DISPLAY ERROR:**



Power Board

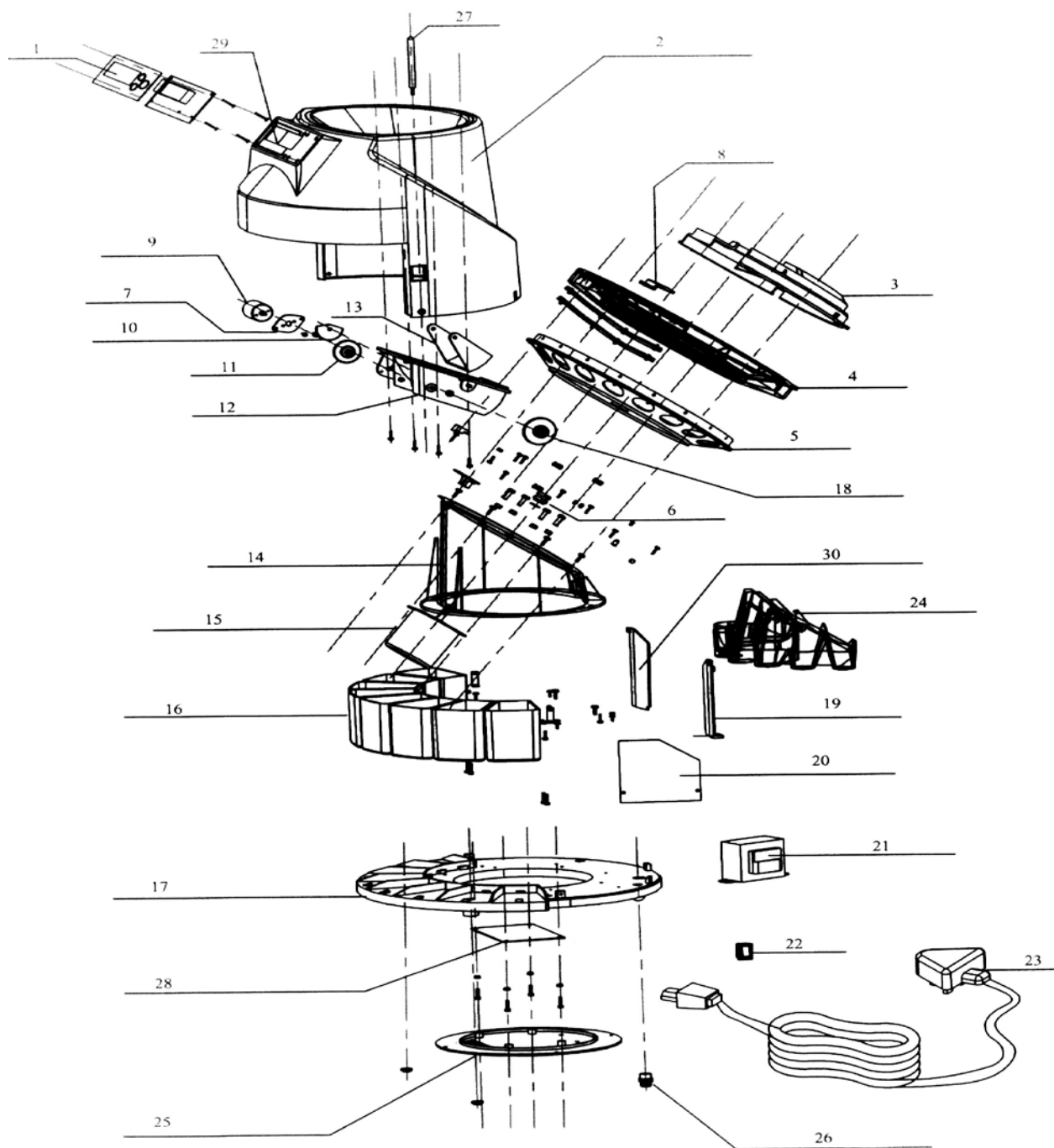


Power Fuse

If the machine no display when turn on the power switch, it means the power board may be have some errors or the power fuse is bad, please replace the power board or the power fuse. (The power board and the power fuse see the picture above. )



# IV. AUTO COIN COUNTER PARTS LISTING



<b>Index NO.</b>	<b>PART NAME</b>	<b>PART NO.</b>	<b>QTY(pc)</b>	<b>PRICE(€)</b>
1	Keyboard	YBO-01-0	1	13.70
2	Shell	YBO-01-12	1	43.70
3	Fense Cover	YBO-01-5	1	15.60
5	Turntable	YBO-01-1	1	23.40
4	Separate Disk	YBO-01-2	1	25.40
6	Bushing	YBO-01-2A	1	2.00
7	Gear 1	YBO-01-3	1	2.00
8	Gasket	YBO-01-4	3	2.00
9	Motor	YC03-2	1	23.80
10	Gear 2	Z01-7	1	1.20
11	Gear 3	Z01-8	1	9.00
12	Funnel	YBO-01-6	1	5.90
13	Tipping Cover	YBO-01-7	1	0.80
14	Pedestal	YBO-01-8	1	22.20
15	Main Motor	YBO-02-2	1	49.90
16	Receiving Slot	YBO-01-10	8	23.40
17	Pedestal	YBO-01-9	1	23.40
18	Axis	YBO-01-14	1	0.80
19	Bracket	YBO-01-20	2	1.60
20	Left Baffle	YBO-01-21	1	1.60
21	Transformer	D8-59	1	27.10
22	Power Switch	D8-4A	1	4.30
23	Power Wire	D10-16M	1	6.60
24	Dropping Hole	YBO-01-11	1	12.10
25	Bottom Cover	YBO-01-13	1	4.70
26	Fuse Socket	D11-11	1	2.70
27	Shunting Stick	YBO-01-23	1	1.20
28	Main Board	D03-052	1	54.60
29	Display Board	D03-054	1	31.20
30	Power Board	D03-053	1	46.80
31	Sensor 1	YB001	1	2.30
32	Sensor 2	YB002	1	2.00
33	Sensor 3	YB003	1	4.70

**Notice: Senor 1, Sensor 2 and Sensor3 please see the pictures above of the problem may be encountered.**