

Initial Checklist

Things to look at before installation. The factory default “HI Vac” setting on the Stratum is 12” Hg, this will need to be reset in “Custom Install Procedure”. Stratum is factory defaulted for application at 0-3 feet above water level, if your application varies from this, special considerations need to be made.

- | | | Yes | No |
|----|---|--------------------------|--------------------------|
| 1. | Have all check valves between the pump and suction outlets been removed from the suction line? | <input type="checkbox"/> | <input type="checkbox"/> |
| 2. | Has the filter been cleaned? (A dirty filter will result in a lower than normal vacuum reading, causing operational problems.) | <input type="checkbox"/> | <input type="checkbox"/> |
| 3. | Has the skimmer and pump baskets been cleaned? (Debris filled baskets will result in higher than normal readings, causing operational problems.) | <input type="checkbox"/> | <input type="checkbox"/> |
| 4. | Do you have a 2 speed pump? The vacuum take-off line must be less than 10 feet long. (black tubing between Stratum and suction line) | <input type="checkbox"/> | <input type="checkbox"/> |
| 5. | Do you have a 2 speed pump or booster/cleaner pump? | <input type="checkbox"/> | <input type="checkbox"/> |
| | ➤ Additional relays (GLX-RELAY) will be needed. | | |
| | ➤ Appropriate dip switches will also need to be turned on. | | |
| 6. | Is the pump below the water level (flooded suction)? If yes, special considerations need to be made. | <input type="checkbox"/> | <input type="checkbox"/> |
| | ➤ Refer to “Flooded Suction Application” and take these steps before trying to set up the Stratum | | |
| 7. | Is the pump elevated more than 3 feet above the water level (lift suction)? If yes, special considerations need to be made. | <input type="checkbox"/> | <input type="checkbox"/> |
| | ➤ Refer to “Elevated Suction Application” and take these steps before trying to set up the Stratum. | | |
| 8. | Is the vacuum take off line installed in the straight run of pipe before the pump? The fitting should be at the 10 or 2 o'clock position for best results. See Fig. 1 | <input type="checkbox"/> | <input type="checkbox"/> |

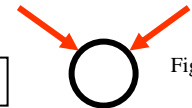


Fig. 1

Dip Switch Settings & Spare Parts

Dip switch settings are factory default in the “OFF” position, turn on the switches as needed per each installation.

Dip Switch	1	2	3	4	5	6	7	8
Position	English		2 Speed	Timers Cycle	Component Test	Booster Pump	Flooded/ Elevated	Pinch Line
On								
Off	X	X	X	X	X	X	X	X

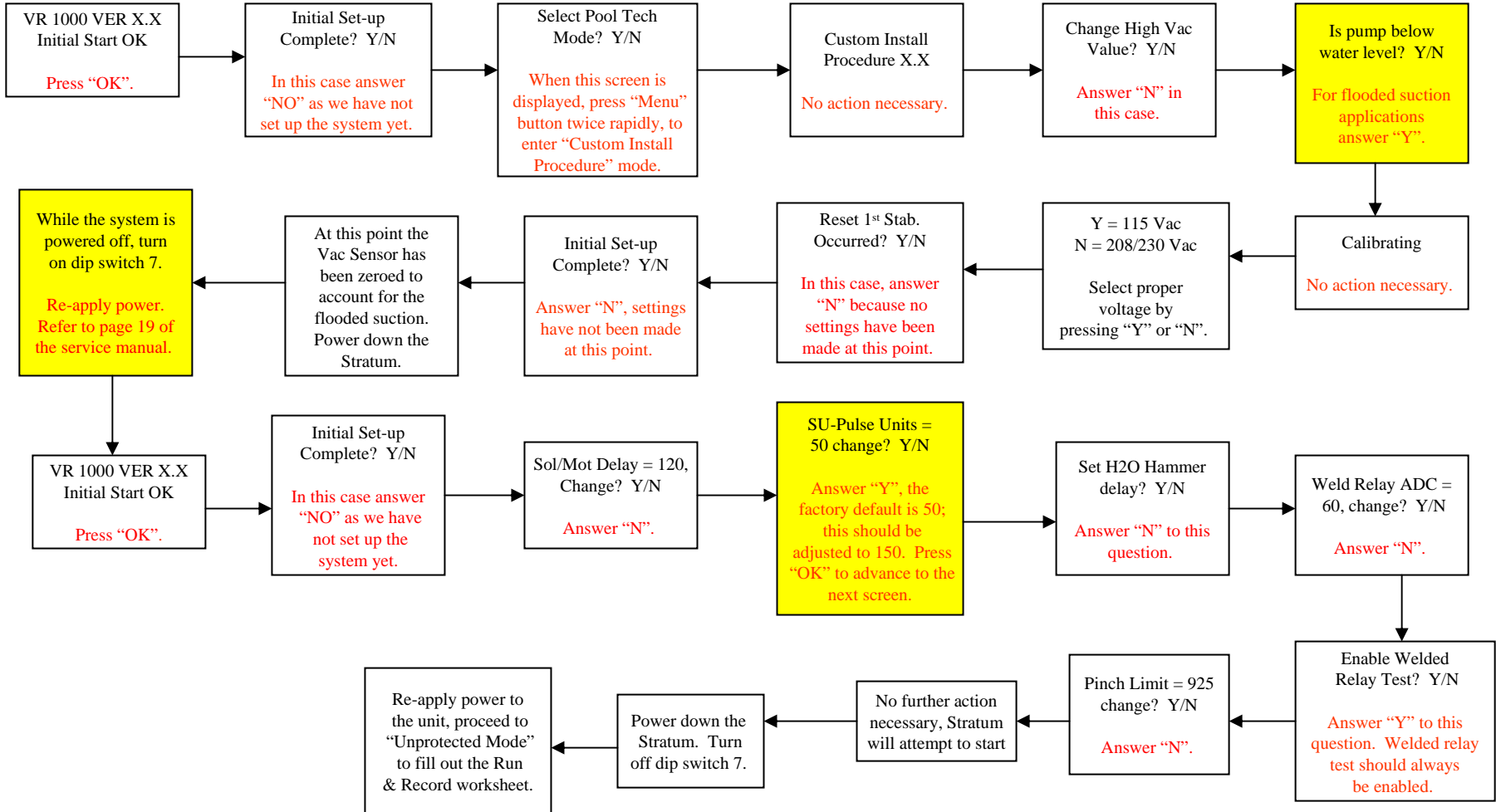
	Spanish	
On	X	
Off		X
	French	
On		X
Off	X	

Note: After making custom settings to the Stratum with dip switch 7 & 8 in the “ON” position, power down the unit and turn the dip switch “OFF” (refer to flooded/elevated suction and pinch line test for sequence). Dip switch 3, 4 and 6 will remain on if these functions are being used.

Item	Part #	Description	Qty
1	VRX100E	Solenoid Valve 24 VAC	1
2	VRX100KIT2	Fitting Kit with saddle fitting	1
3	VRX100H	250 ma Fuse	2
4	VRX100PAK	Tubing Replacement Kit (Internal Tubing)	1
5	VRX100F	Vent Filter ¼” NPTM (Pack includes 8’ tube & fittings to extend tube above water level)	1
6	CLX220J25	5/16” Tubing X 25’ Long	1
7	VRXPCBA	Printed Circuit Board	1
8	GLX-RELAY	Contactor/Relay OMRON G7L-2A-BUB-JCB (24 DC)	1

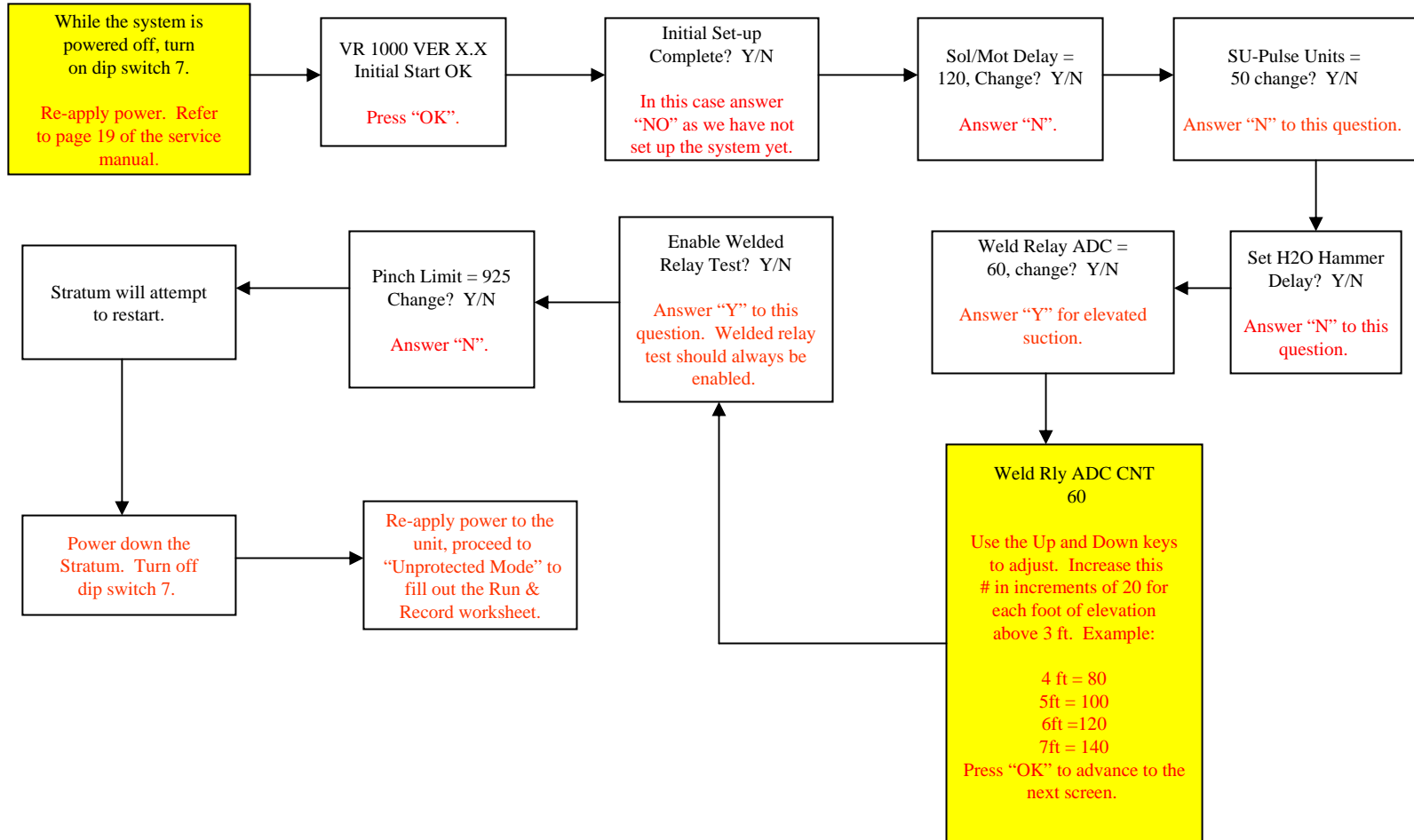
Flooded Suction Application

Vac Sensor needs to be zeroed out. SU pulse units need to be adjusted prior to initial set-up.



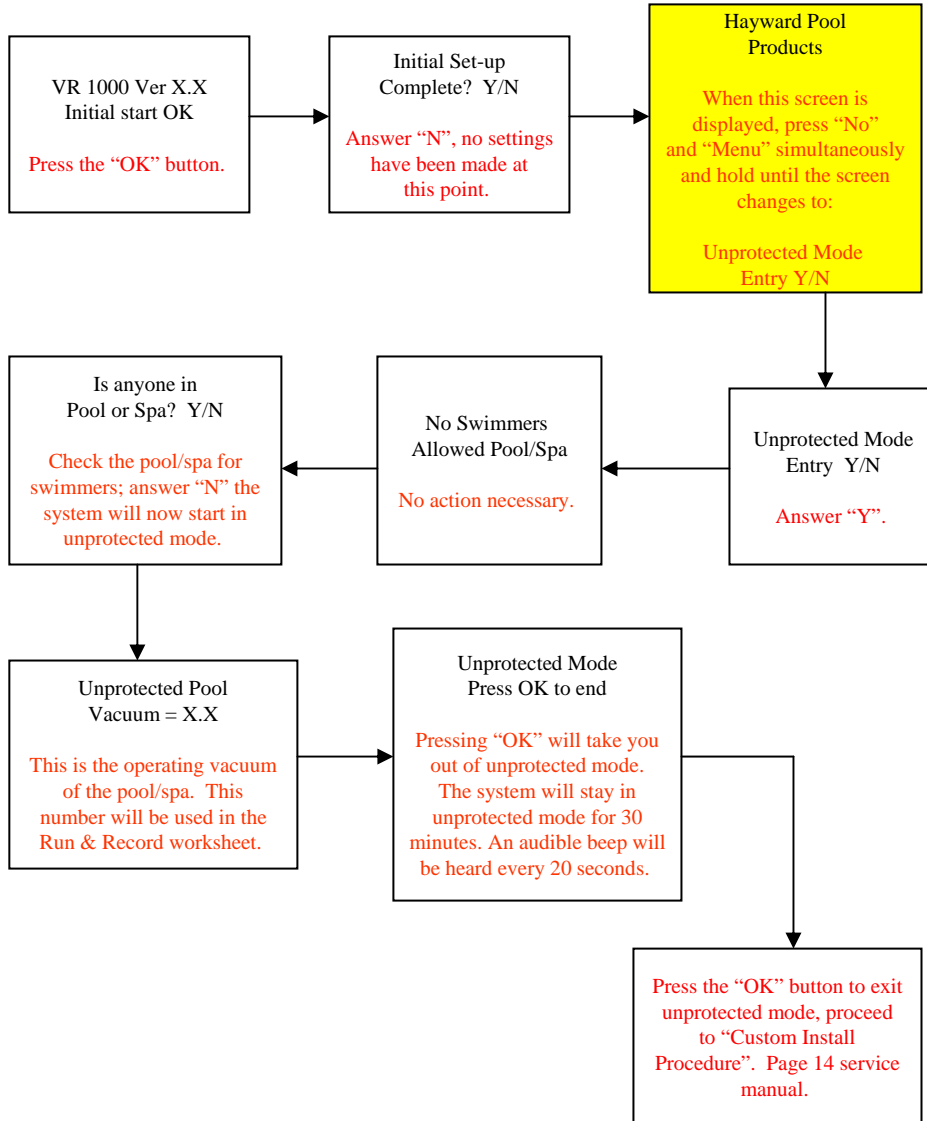
Elevated Suction Application

Weld Relay ADC CNT needs to be changed for elevated applications more than 3 ft above the water level.



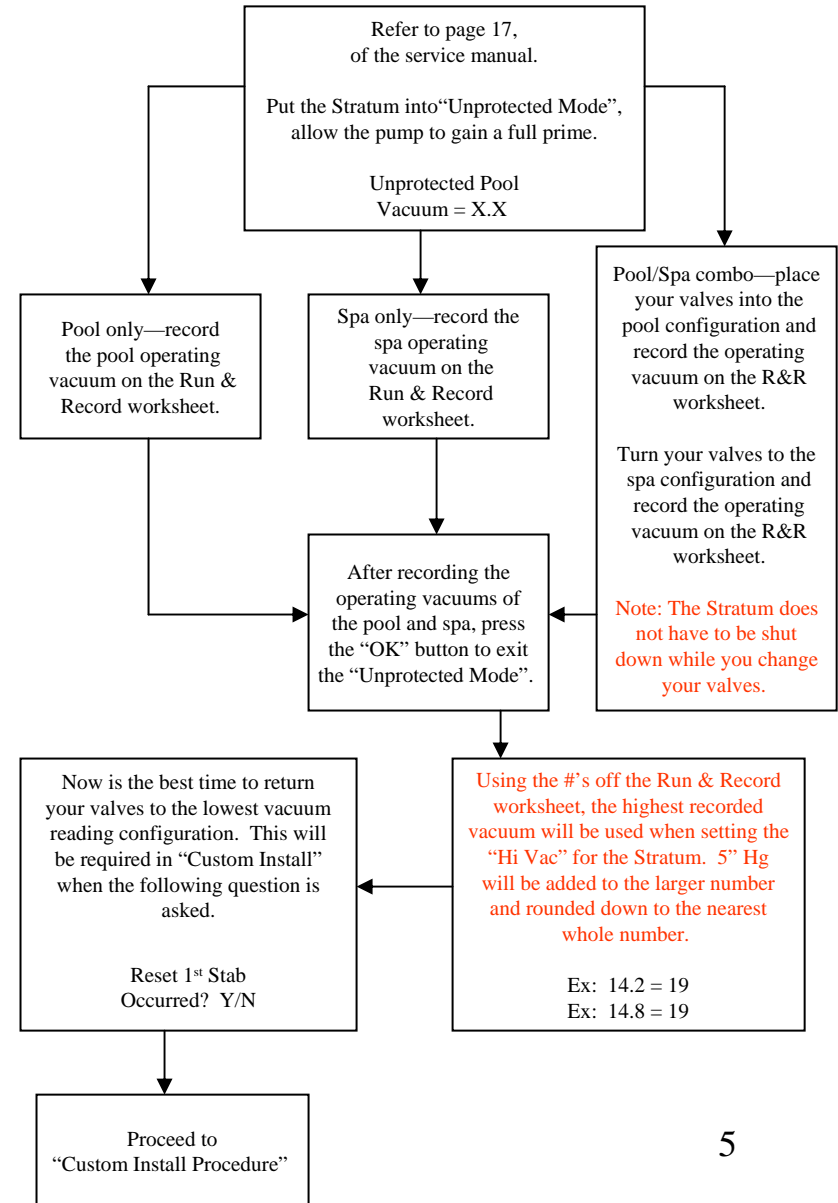
Unprotected Mode Entry

The pool is unprotected when in this mode. This mode can be used for vacuuming the pool, backwashing the filter, or when filling out the Run & Record worksheet.



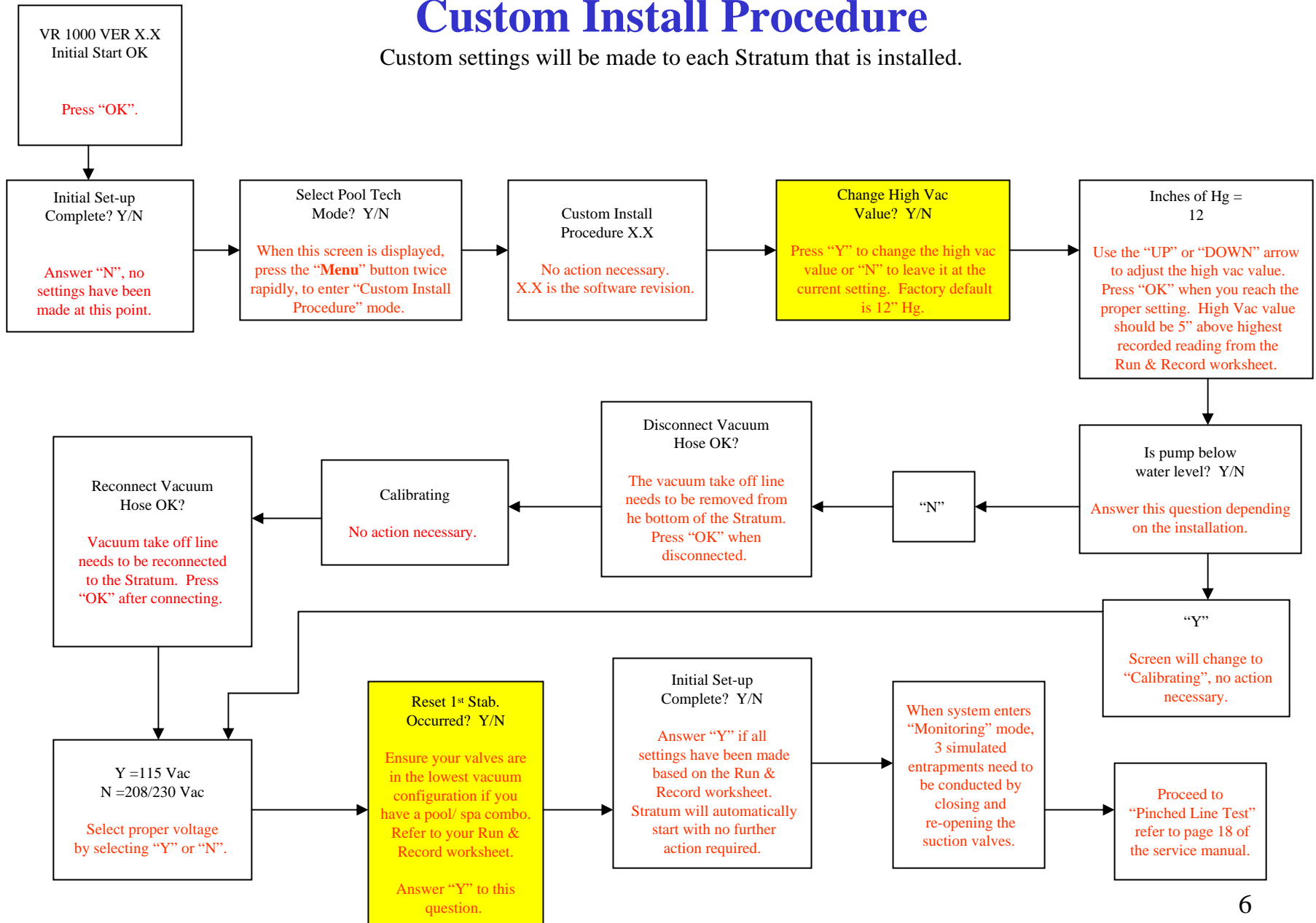
Run & Record Worksheet

A compilation of vacuum readings for the pool, spa, or pool/spa combo.

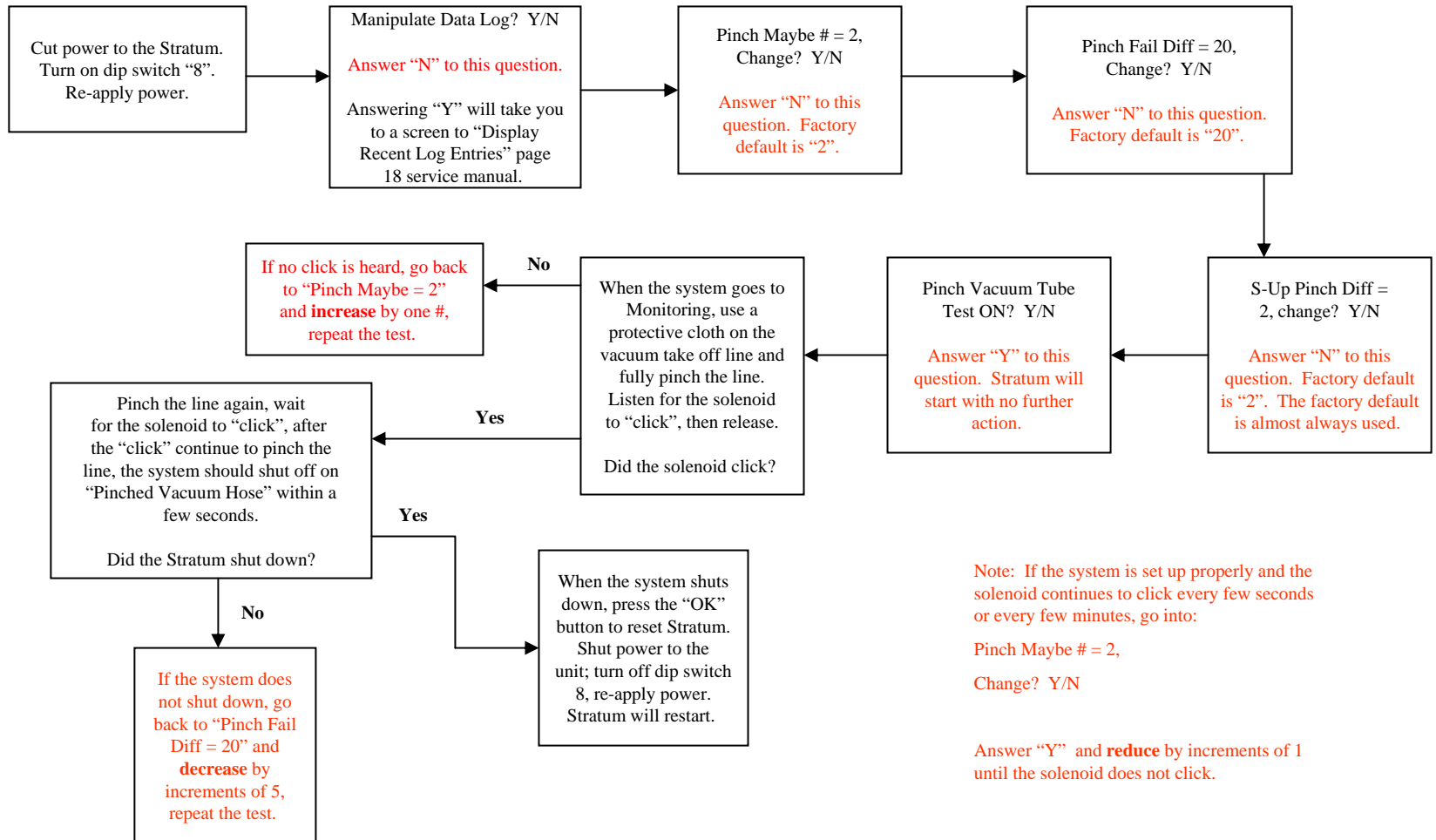


Custom Install Procedure

Custom settings will be made to each Stratum that is installed.

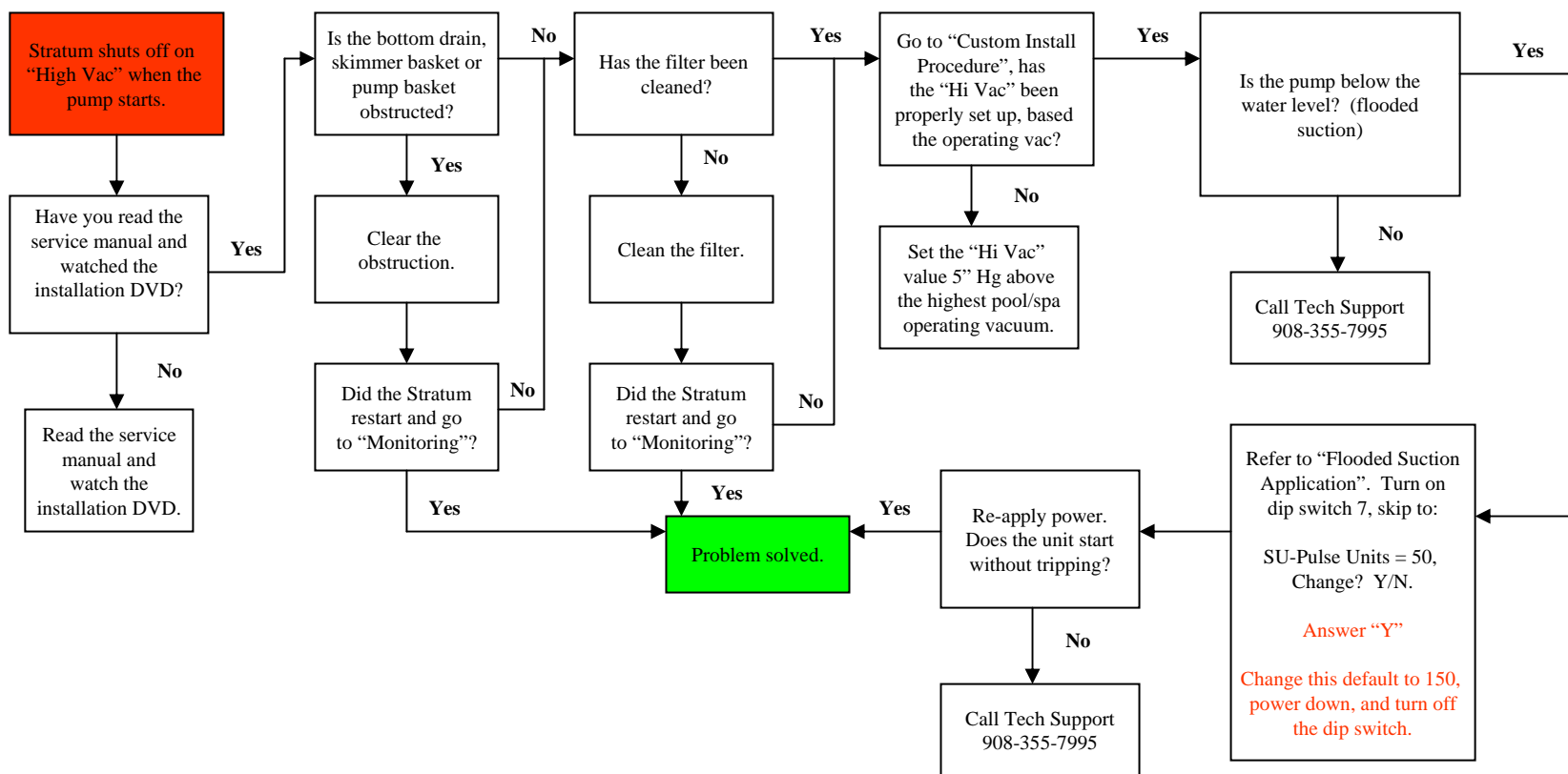


Pinched Line Test



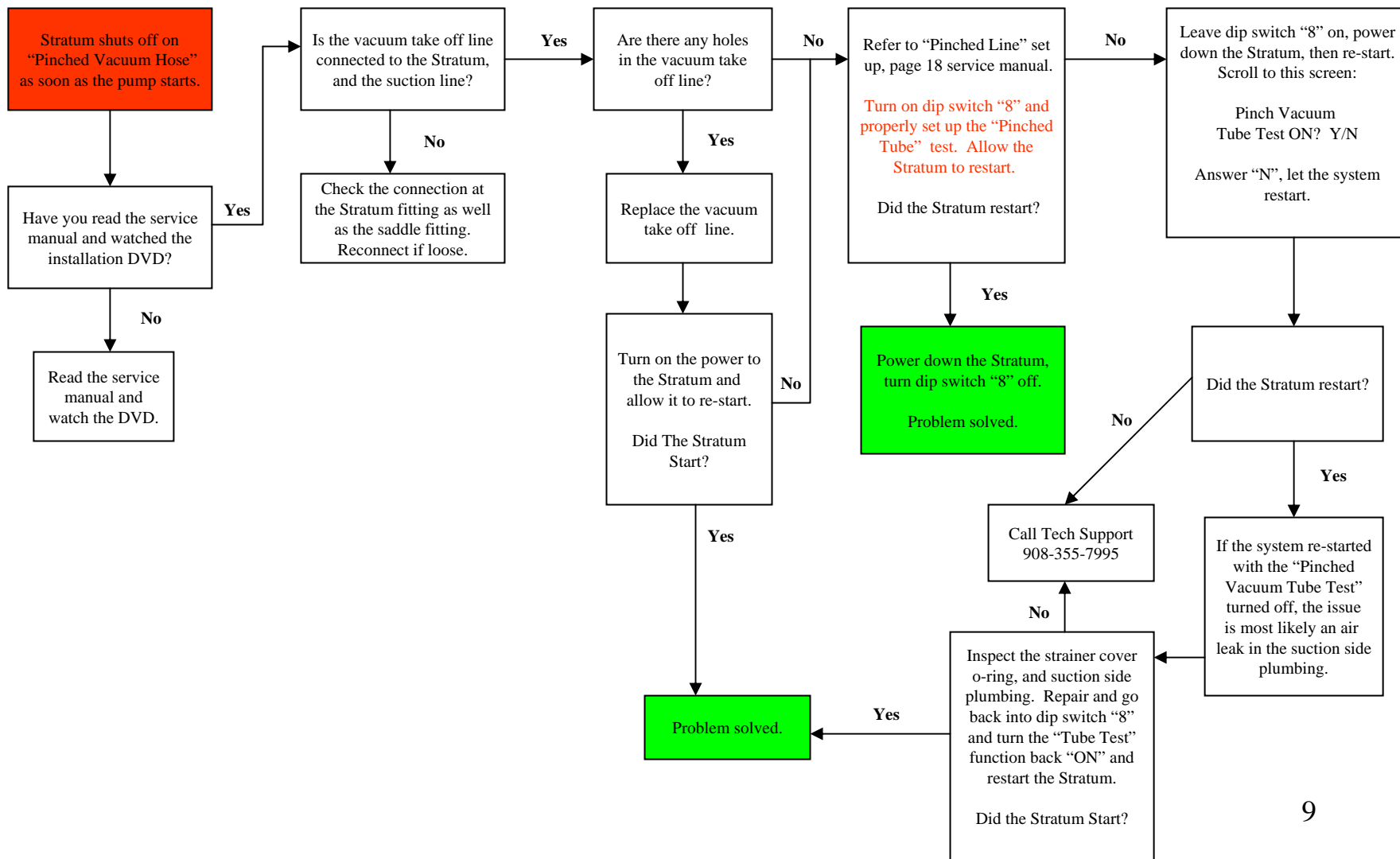
What's The Problem?

Stratum shuts off on "Hi Vac" when the pump starts.



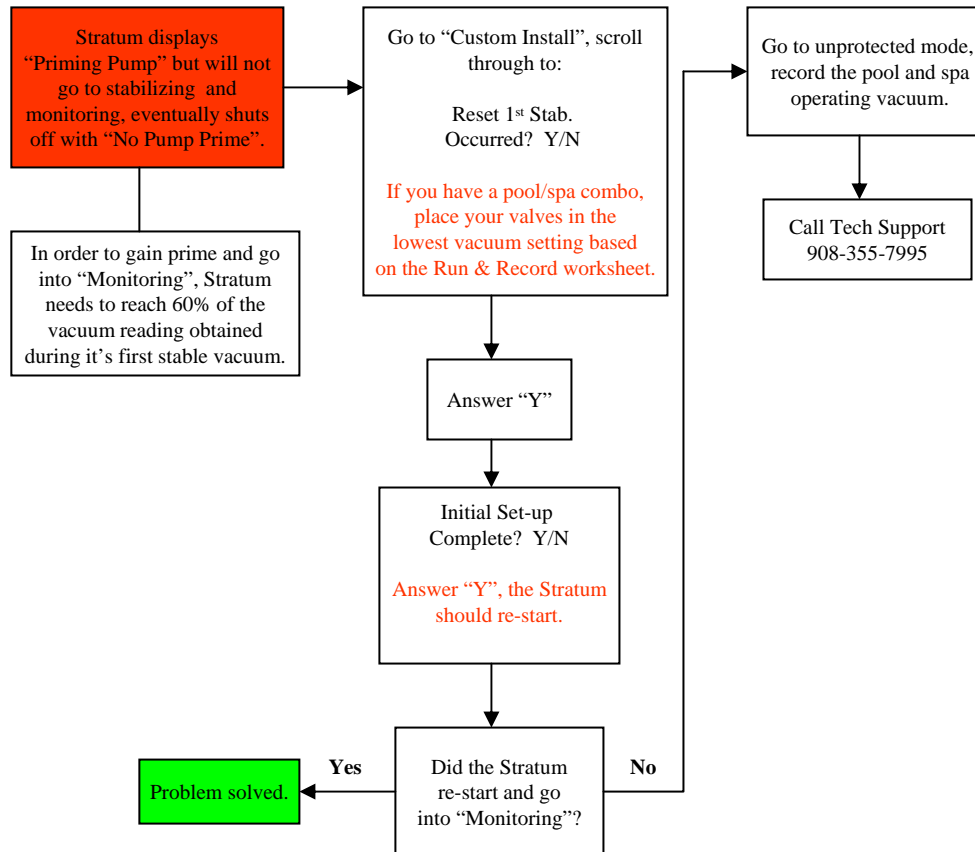
What's The Problem?

Stratum is shutting off on "Pinched Vacuum Hose" as soon as the pump starts.



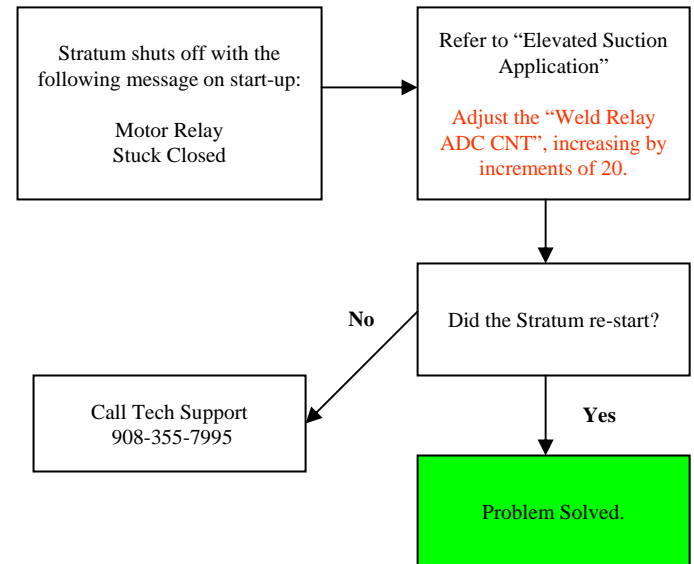
What's The Problem?

Stratum displays “Priming Pump” but will not go to stabilizing and monitoring, eventually shuts off with “No Pump Prime”.



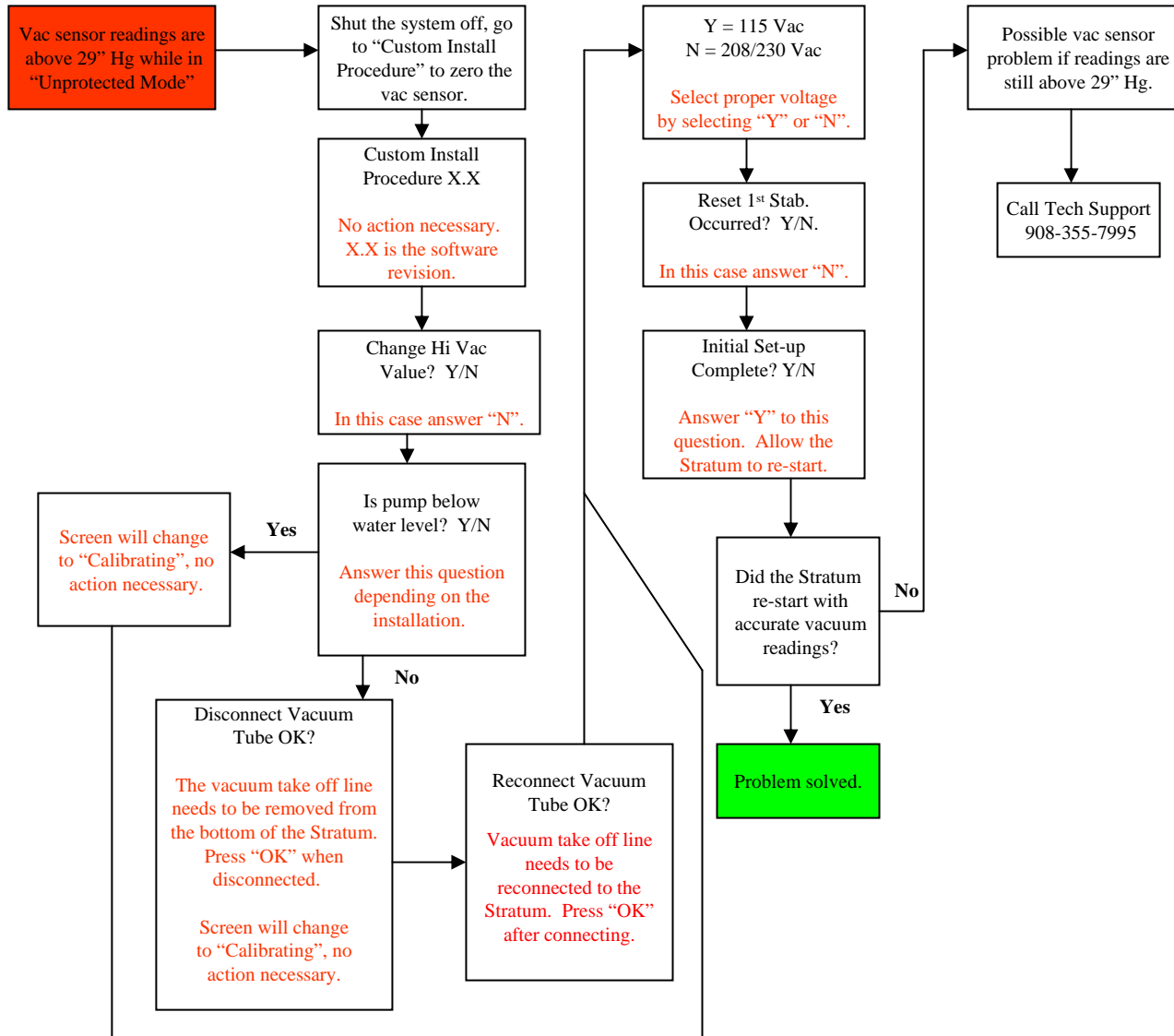
What's The Problem?

Unit shuts off with “Motor Relay Stuck Closed” on initial start-up.



What's The Problem?

Vac sensor readings above 29" Hg.



Before You Call Tech Support 908-355-7995

To better assist you, the following information will be needed when you call.

Information we need.	Example.
Type /HP--	Type /HP-- SP3010X15AZ
Discharge Line--	Discharge Line-- 2"
Suction Line--	Suction Line-- 2"
Elevation--	Elevation--
Flooded--	Flooded-- 4ft
Distance to Pool--	Distance to Pool-- 20 ft
Pool operating vac--	Pool operating vac-- 15" Hg
Spa operating vac--	Spa operating vac-- 12" Hg
High vac setting--	High vac setting-- 20" Hg
Dip switch (7) Pulse--	Dip switch (7) Pulse-- 150
Dip switch (7) Weld relay ADC--	Dip switch (7) Weld relay ADC-- 60
Pinch maybe--	Pinch maybe-- 2
Pinch fail--	Pinch fail-- 20
Type--	Type-- Filter pump/ Jet pump