

FITTING OUT THINGS TO DO

Tune the rig

Check all the winches

Go to Payne's Marine

RIGGING: Need something
light, reliable, and strong...
gotta be Samson WarpSpeed,
AmSteel-Blue or new MLX?
(Interesting performance
at a great price point)

UPGRADE DOCK &
ANCHOR LINES:
Check out Gold-N-Braid
for the dock lines and
Super Strong for the
anchor lines-
TOUGH STUFF!

PaynesMarine.com
has lots of great info!



samson
THE STRONGEST NAME IN ROPE

Accessory Cord	591
Backstay Adjusters	600
Blocks	566-572
Deck Organizers	571
Float Line.....	590
Genoa Cars	573, 575
Mainsheet Systems	574
Rope.....	589-591
Rope Clutch	577
Sail Repair Tape.....	596
Shackles	570, 579-582
Snaps.....	582-585
Spinnaker Poles.....	593, 594
Splicing Tools	549, 586
Tiller Extensions	592
Track	573, 576
Turnbuckles	598, 602
Twine.....	591
Whisker Poles	593
Winch Handles	564
Winches.....	557-563
Windex.....	597
Wire Rope & Tools.....	601

THE WORLD'S LARGEST MANUFACTURER OF MARINE HEADS



THE PREFERRED CHOICE

Jabsco marine toilets are superior in design and reliability. In fact, more yachtsman and boatbuilders choose Jabsco manual and electric heads worldwide. The toilets compliment all boat interiors and are built to resist harsh chemicals and the rigors of life at sea.

Visit us online at www.ittflowcontrol.com to discover the stylish new Lite Flush Electric toilet or our Deluxe Flush range of luxury marine toilets.



Twist N' Lock
(Manual)



Quiet Flush
(Electric)



Lite Flush
(Electric)



Deluxe Flush
(Electric)

A Global Leader in Pump & Valve Solutions
www.jabsco.com

EVO™ Winches

LEWMAR®

Lewmar fuses its legendary quality with state of the art technology to offer the most advanced winch range ever; the EVO™.

Lewmar believes in evolution not revolution – it has been evolving and improving winch technology for almost half a century. Since the 1960's Lewmar has developed winch solutions for the world's leading boat-builders, custom yards and race teams. No other company in the leisure marine market has the same level of heritage and expertise when it comes to building reliable, high quality, easy to fit and easily serviceable winches.

Steadfast building blocks

We've taken Lewmar's Ocean Winch; the most popular winch ever made and improved it further. The new EVO™ winch is a development that contains years of knowledge and understanding of what boat builders and sailors want. No compromises have been made in terms of quality or integrity of design. You won't find much plastic here, we use high quality alloys and metal!

Customer focused

Key boat builders briefed us that they wanted Lewmar to retain all the benefits of its simple, no nonsense, easy to service winch with very few parts. It's proven performance and easy conversion to power were all in its favour.

But we knew we could make installation easier and update the styling. With this in mind we have designed a winch that can either be fitted in the conventional manner, or without removing the drum, to speed up installation. This new easy fit feature uses Lewmar's **"FAST FIT"** stud fixings.

Cruising Sailors confirmed they want a proven quality winch that could be serviced by the boat owner without any tools, they wanted to be able to put the winch together themselves, and they also wanted a reliable and predictable grip.

With many winch users only chartering boats for a few days holiday a year, safety is key in any new developments. We have included in some simple safety features the direction arrow which means all your crew load the line on (feed) the winch correctly that will make sailing more fun for the entire family.

Racing Sailors liked the alloy, needle-peened finish of Lewmar's winches. Their only request was that they'd like it in black. The good news is we have it in black, grey and chrome bronze finish.

Manufacturing quality

In the last few years Lewmar Havant plant was updated with the most hi tech machinery in the industry. Our plant is capable of building hundreds of winches every day; we are able to control quality, finish and variants all on the same machines. Our quality control procedures and processes are tried and tested and renowned throughout the industry.

7-Year warranty

We are so confident about the quality of our new EVO™ winch range that we are backing this up with a new comprehensive 7-year warranty.



With Lewmar's global network of distributors, wherever you are in the world, you can be confident that Lewmar will be there to support you.



EVO™ Winches

LEWMAR®

Take a look inside

Engineering excellence

For Lewmar customers, there is no such thing as "just a winch." That's because inside every winch you will find materials developed over many years, designed using the latest techniques and machined using the most up to date CNC equipment. When we machine the winches we are looking for the maximum in efficiency, durability and strength to weight ratio.

Because of our aggressive in-house testing program, Lewmar winches have proven themselves time and again in the roughest conditions and on the toughest racecourses.



Simple servicing

NO TOOLS are required to service a Lewmar EVO™ winch, simply unscrew the top cap with your fingers to remove the drum and provide access to the proven gear train.

If you try to put a Lewmar EVO™ winch together wrongly, it will become very clear that you've got it wrong; it is impossible to service the winch and put it back together incorrectly. Safety and convenience has been designed into every EVO™ winch.



Electric winches

Whatever sailing you do, short handed or long distance cruising, the decision to install electric winches, or upgrade your existing winches with one of our conversion kits is simple.

Lewmar's EVO™ winches are specifically engineered to offer sail trimming at the push of a button for more relaxed and comfortable sailing.



Multiple styles and finishes

EVO™ winches are available in black or grey alloy and chrome bronze for the cruising sailor. The range is available with single speed or two speed, manual winches and electric electric winches are available from size 40 through to 65.



Quick installation

The new Lewmar "FAST FIT" enables one person to fit the winch, without removing the drum. There are no plastic parts to snap off, just select the correct size stud, wind it into the strong bronze centre stem and mount the winch into pre-drilled holes.



Wave Spring jaw and stripper ring

The integrated investment cast stainless steel feeder arm completely covers the winch, and does not create a rope trap above our WaveSpring jaws.

Directional arrows allow fool proof loading of the winch, a very helpful feature if you are sailing with an inexperienced crew.

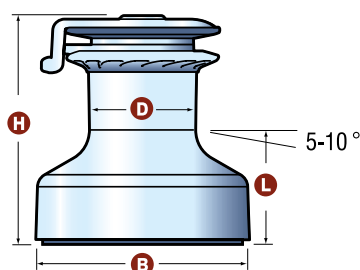
The stripper position can be adjusted to smoothly feed the rope out of the jaws and into the cockpit, while the proven stripper ring goes round the WaveSpring. Lewmar's unique design ensures you cannot snag that loose rope cover, no matter how long you have been using your sheets.

EVO™ Winches


LEWMAR®

EVO™ Winch Dimensions

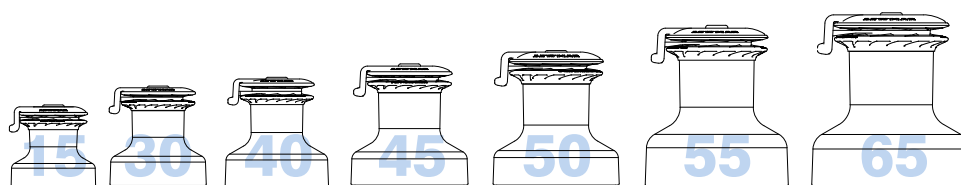
Note: Not all mounting holes are symmetrical on all models.



Mounting Instructions

15ST	5 x M6 (1/2 in) c'sk head screws on 94mm (37/10 in) PCD
30ST	5 x M6 (1/2 in) c'sk head screws on 113mm (4 15/32 in) PCD
40ST	5 x M6 (1/2 in) c'sk head screws on 121mm (4 3/4 in) PCD
45ST	5 x M8 (5/16 in) c'sk head screws on 136mm (5 11/32 in) PCD
50ST	5 x M8 (5/16 in) c'sk head screws on 150mm (5 29/32 in) PCD
55ST	6 x M8 (5/16 in) c'sk head screws on 165mm (6 1/2 in) PCD
65ST	5 x M10 (3/8 in) c'sk head screws on 184mm (7 1/4 in) PCD

Note: not all holes are symmetrical on all models. For "FAST FIT" stud specifications visit www.lewmar.com



EVO™ Self-Tailing Winch Specifications

Part Number	Model	Finish	Gear Ratio		Power Ratio		SWL		Weight		Drum Dia		Base Dia		Height		Line Entry		Line Size	
			1st	2nd	1st	2nd	kg	lb	kg	lb	mm	in	mm	in	mm	in	mm	in	mm	in
49515055	15ST	Alloy Black	2:1		15.8:1		570	1257	2.9	6.4	65.7	2 9/16	121	4 3/4	115	4 11/16	58	2 5/16	8-12	5/16-1/2
49515057	15ST	Alloy Grey	2:1		15.8:1		570	1257	2.9	6.4	65.7	2 9/16	121	4 3/4	115	4 11/16	58	2 5/16	8-12	5/16-1/2
49515056	15ST	Chrome Bronze	2:1		15.8:1		570	1257	3.9	8.6	65.7	2 9/16	121	4 3/4	115	4 11/16	58	2 5/16	8-12	5/16-1/2
49530055	30ST	Alloy Black	2:1	4.2:1	13.8:1	29.2:1	685	1510	4.2	9.2	74	2 15/16	138	5 7/16	145.85	5 3/4	69	2 11/16	8-12	5/16-1/2
49530057	30ST	Alloy Grey	2:1	4.2:1	13.8:1	29.2:1	685	1510	4.2	9.2	74	2 15/16	138	5 7/16	145.85	5 3/4	69	2 11/16	8-12	5/16-1/2
49530056	30ST	Chrome Bronze	2:1	4.2:1	13.8:1	29.2:1	685	1510	5.6	12.3	74	2 15/16	138	5 7/16	145.85	5 3/4	69	2 11/16	8-12	5/16-1/2
49540055	40ST	Alloy Black	1.9:1	5.8:1	13.2:1	40.2:1	795	1753	4.9	10.7	74	2 15/16	148	5 13/16	158.5	6 1/4	79	3 1/8	8-12	5/16-1/2
49540057	40ST	Alloy Grey	1.9:1	5.8:1	13.2:1	40.2:1	795	1753	4.9	10.7	74	2 15/16	148	5 13/16	158.5	6 1/4	79	3 1/8	8-12	5/16-1/2
49540056	40ST	Chrome Bronze	1.9:1	5.8:1	13.2:1	40.2:1	795	1753	6.5	14.3	74	2 15/16	148	5 13/16	158.5	6 1/4	79	3 1/8	8-12	5/16-1/2
49545055	45ST	Alloy Black	2.4:1	7.6:1	13.9:1	44.8:1	1200	2646	7.2	15.8	87	3 7/16	168	6 5/8	177.7	7	84	3 5/16	8-14	5/16-9/16
49545057	45ST	Alloy Grey	2.4:1	7.6:1	13.9:1	44.8:1	1200	2646	7.2	15.8	87	3 7/16	168	6 5/8	177.7	7	84	3 5/16	8-14	5/16-9/16
49545056	45ST	Chrome Bronze	2.4:1	7.6:1	13.9:1	44.8:1	1200	2646	9.7	21.3	87	3 7/16	168	6 5/8	177.7	7	84	3 5/16	8-14	5/16-9/16
49550055	50ST	Alloy Black	2.6:1	9:1	13.9:1	48.6:1	1250	2756	8.8	19.4	93	3 5/8	181	7 1/8	196.8	7 3/4	86	3 3/8	8-14	5/16-9/16
49550057	50ST	Alloy Grey	2.6:1	9:1	13.9:1	48.6:1	1250	2756	8.8	19.4	93	3 5/8	181	7 1/8	196.8	7 3/4	86	3 3/8	8-14	5/16-9/16
49550056	50ST	Chrome Bronze	2.6:1	9:1	13.9:1	48.6:1	1250	2756	12.1	26.7	93	3 5/8	181	7 1/8	196.8	7 3/4	86	3 3/8	8-14	5/16-9/16
49555055	55ST	Alloy Black	2.8:1	11.2:1	13.8:1	54:1	1480	3263	12.0	26.4	105	4 1/8	205	8 1/16	237.5	9 11/32	115	4 1/2	8-16	5/16-5/8
49555057	55ST	Alloy Grey	2.8:1	11.2:1	13.8:1	54:1	1480	3263	12.0	26.4	105	4 1/8	205	8 1/16	237.5	9 11/32	115	4 1/2	8-16	5/16-5/8
49555056	55ST	Chrome Bronze	2.8:1	11.2:1	13.8:1	54:1	1480	3263	17.0	37.5	105	4 1/8	205	8 1/16	237.5	9 11/32	115	4 1/2	8-16	5/16-5/8
49565055	65ST	Alloy Black	3.1:1	14.8:1	13.4:1	64:1	1700	3748	16.6	36.5	118	4 5/8	231	9 1/8	253.5	10	121.5	4 13/16	8-18	5/16-1 1/16
49565057	65ST	Alloy Grey	3.1:1	14.8:1	13.4:1	64:1	1700	3748	16.6	36.5	118	4 5/8	231	9 1/8	253.5	10	121.5	4 13/16	8-18	5/16-1 1/16
49565056	65ST	Chrome Bronze	3.1:1	14.8:1	13.4:1	64:1	1700	3748	23.8	52.4	118	4 5/8	231	9 1/8	253.5	10	121.5	4 13/16	8-18	5/16-1 1/16

For information on the Lewmar Ocean Range please go to www.lewmar.com

EVO™**LEWMAR®****Electric Winches****Electric Winch Kits 12V** (24V units are also available)

Part Number	Model	Description
49540210	40EST	Alloy Black Complete
49540201	40EST	Chrome Bronze Complete
49540200	40EST	Alloy Grey Complete
49545210	45EST	Alloy Black Complete
49545201	45EST	Chrome Bronze Complete
49545200	45EST	Alloy Grey Complete
49550210	50EST	Alloy Black Complete
49550201	50EST	Chrome Bronze Complete
49550200	50EST	Alloy Grey Complete
49555210	55EST	Alloy Black Complete
49555201	55EST	Chrome Bronze Complete
49555200	55EST	Alloy Grey Complete
49565210	65EST	Alloy Black Complete
49565201	65EST	Chrome Bronze Complete
49565200	65EST	Alloy Grey Complete

Kit includes: Deck unit, motor gearbox, E series connected to motor 40 -50, or control box 55 & 65, circuit breaker 40 -50 or fuse 55 to 65, deck switch.

For information on the Lewmar Ocean Electric Range please go to www.lewmar.com

A Self-Tailing EVO™ Winch that works at the push of a button!

That's exactly what you will find with Lewmar's electric winch range. Lewmar electric winches are available with 2 levels of control: E series and ELS. Both are fitted with a series wound motor allowing the sheet to be recovered rapidly at low load when sheets are slacker, and slows down as load increases. This provides speed when you need it most, and control as you tune your sails to perfection removing the need of a 2 speed winch motor. Manual operation is available as a back up, or to experience traditional sailing.

New electric motor includes controller

Lewmar supplies a new motor gearbox with the E-series controller pre-mounted. This convenient solution removes any complicated wiring for the installer and keeps the boat looking very tidy. For Part No refer to p.82

E-series

The E-series controller is equipped with a thermal trip to monitor the motor temperature, which ensures a cut out if the heat builds up to an unacceptable level.

Available on the EVO™ electric winch range 40, 45 & 50.

Features

- Push Button Power
- Quiet operation
- Manual override
- All the benefits of the EVO™ range
- Easy to install
- Inclusive of contactor and motor units

**Electric load sensing – ELS**

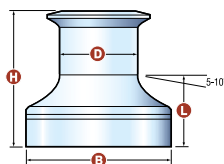
Pioneered by Lewmar, ELS (Electric Load Sensing) electric winches are controlled by an Overload Protection Control Box, which allows the winch to be operated up to the safe working load of the specific winch. Once this load is exceeded, the winch automatically cuts out. Once the load is reduced to below the safe working load, the winch can be restarted. The ELS features the additional safety function of a Motor Thermal Trip, which ensures that the motor cuts out in the event of excessive heat build up. ELS is available on the EVO™ Electric Winch Range Size 40 to 80.



LEWMAR® OCEAN STANDARD WINCHES

Lewmar draws upon years of winch design and manufacture to ensure that the Standard Winch is a high-quality, hard-wearing control solution. The long glass-fibre reinforced, composite plastic stem is strong and light, while also providing efficient plain bearing. Available in sizes ranging from 6 to 16, in one or two speeds, and in a choice of two finishes, the Lewmar Standard Winch is supported by a comprehensive range of winch spares.

LEWMAR®



Standard Winch Chrome



Standard Winch Grey Alloy

Standard Winch Specifications

Part Number	Model	Finish	Gear Ratio		Power Ratio		SWL		Weight		Drum Dia		Base Dia		Height		Line Entry		Mounting Instructions
			1st	2nd	1st	2nd	kg	lb	kg	lb	mm	in	mm	in	mm	in	mm	in	
49006010	6	Alloy	1:1		6.8:1		341	752	0.5	1.1	59	2 ⁵ / ₁₆	94	3 ¹¹ / ₁₆	83	3 ¹ / ₄	35.5	1 ³ / ₈	4 x M6 (1/4 in) c'sk head screws on 66mm (2 ¹³ / ₃₂ in) PCD
19006100	6	Chrome	1:1		6.8:1		341	752	1.1	2.4	59	2 ⁵ / ₁₆	94	3 ¹¹ / ₁₆	83	3 ¹ / ₄	35.5	1 ³ / ₈	
49007030	7	Alloy	1:1		7.9:1		341	752	0.8	1.8	65	2 ⁹ / ₁₆	108	4 ¹ / ₄	102	4	40	1 ⁹ / ₁₆	5 x M6 (1/4 in) c'sk head screws on 80mm (3 ¹ / ₂ in) PCD
49007032	7	Chrome	1:1		7.9:1		341	752	1.7	3.7	65	2 ⁹ / ₁₆	108	4 ¹ / ₄	102	4	40	1 ⁹ / ₁₆	
49008030	8	Alloy	1:1		7.9:1		455	1003	1.4	3.1	65	2 ⁹ / ₁₆	108	4 ¹ / ₄	103	4 ¹ / ₁₆	40	1 ⁹ / ₁₆	5 x M6 (1/4 in) c'sk head screws on 80mm (3 ¹ / ₂ in) PCD
49008012	8	Chrome	1:1		7.9:1		455	1003	2.3	5.1	65	2 ⁹ / ₁₆	108	4 ¹ / ₄	103	4 ¹ / ₁₆	40	1 ⁹ / ₁₆	
49016030	16	Alloy	1:1	2:1	7.9:1	16:1	570	1257	2.1	4.6	67	2 ⁵ / ₈	120	4 ³ / ₄	112	4 ⁷ / ₁₆	55	2 ³ / ₁₆	5 x M6 (1/4 in) c'sk head screws on 94mm (3 ¹¹ / ₁₆ in) PCD
49016032	16	Chrome	1:1	2:1	7.9:1	16:1	570	1257	3.2	7.0	67	2 ⁵ / ₈	120	4 ³ / ₄	112	4 ⁷ / ₁₆	55	2 ³ / ₁₆	

LEWMAR® OCEAN ST SELF-TAILING WINCHES

The Lewmar Wavespring self-tailer combines our renowned and gentle wave grip feature with self adjusting springs. It handles today's smaller diameters, as well as the traditional larger Dacron composite ropes. A sleek, minimum-friction feeder arm provides absolute snag-free operation.



Self-Tailing Winch Specifications

Part Number	Model	Finish	Gear Ratio		Power Ratio		Weight		Drum Dia		Base Dia		Height		Line Entry		Line Size	
			1st	2nd	1st	2nd	kg	lb	mm	in	mm	in	mm	in	mm	in	mm	in
49014000	14ST	Alloy	2:1		15.8:1		2.3	5.1	65.7	2 ⁹ / ₁₆	121	4 ³ / ₄	121	4 ³ / ₄	58	2 ⁵ / ₁₆	6-10	1/4 - 3/8
49014001	14ST	Chrome	2:1		15.8:1		3.1	6.8	65.7	2 ⁹ / ₁₆	121	4 ³ / ₄	121	4 ³ / ₄	58	2 ⁵ / ₁₆	6-10	1/4 - 3/8
49016000	16ST	Alloy	2:1		15.8:1		2.9	6.4	65.7	2 ⁹ / ₁₆	121	4 ³ / ₄	145.5	5 ³ / ₄	58	2 ⁵ / ₁₆	8-12	5/16 - 1/2
49016001	16ST	Chrome	2:1		15.8:1		3.9	8.6	65.7	2 ⁹ / ₁₆	121	4 ³ / ₄	145.5	5 ³ / ₄	58	2 ⁵ / ₁₆	8-12	5/16 - 1/2
49016019*	16ST	Bronze	2:1		15.8:1		3.9	8.6	65.7	2 ⁹ / ₁₆	121	4 ³ / ₄	145.5	5 ³ / ₄	58	2 ⁵ / ₁₆	8-12	5/16 - 1/2
49030000	30ST	Alloy	2:1	4.2:1	13.8:1	29.2:1	4.2	9.2	74	2 ¹⁵ / ₁₆	138	5 ³ / ₁₆	160.5	6 ⁵ / ₁₆	69	2 ¹¹ / ₁₆	8-12	5/16 - 1/2
49030001	30ST	Chrome	2:1	4.2:1	13.8:1	29.2:1	5.6	12.3	74	2 ¹⁵ / ₁₆	138	5 ³ / ₁₆	160.5	6 ⁵ / ₁₆	69	2 ¹¹ / ₁₆	8-12	5/16 - 1/2
49040055	40ST	Alloy	1.9:1	5.8:1	13.2:1	40.2:1	4.9	10.7	74	2 ¹⁵ / ₁₆	148	5 ¹³ / ₁₆	173	6 ¹³ / ₁₆	79	3 ¹ / ₈	8-12	5/16 - 1/2
49040056	40ST	Chrome	1.9:1	5.8:1	13.2:1	40.2:1	6.5	14.3	74	2 ¹⁵ / ₁₆	148	5 ¹³ / ₁₆	173	6 ¹³ / ₁₆	79	3 ¹ / ₈	8-12	5/16 - 1/2
49046055	46ST	Alloy	2.4:1	7.6:1	13.9:1	44.8:1	7.2	15.8	87	3 ⁷ / ₁₆	168	6 ⁵ / ₈	192	7 ⁹ / ₁₆	84	3 ⁵ / ₁₆	8-14	5/16 - 9/16
49046056	46ST	Chrome	2.4:1	7.6:1	13.9:1	44.8:1	9.7	21.3	87	3 ⁷ / ₁₆	168	6 ⁵ / ₈	192	7 ⁹ / ₁₆	84	3 ⁵ / ₁₆	8-14	5/16 - 9/16
49048055	48ST	Alloy	2.6:1	9:1	13.9:1	48.6:1	8.8	19.4	93	3 ³ / ₈	181	7 ¹ / ₈	208	8 ³ / ₁₆	86	3 ³ / ₈	8-14	5/16 - 9/16
49048056	48ST	Chrome	2.6:1	9:1	13.9:1	48.6:1	12.1	26.7	93	3 ³ / ₈	181	7 ¹ / ₈	208	8 ³ / ₁₆	86	3 ³ / ₈	8-14	5/16 - 9/16

LEWMAR®

LEWMAR®

ELECTRIC CONVERSION KITS FOR OCEAN WINCHES, 1993 TO PRESENT

E SERIES CONVERSION KIT

This option is achieved by the simple installation of a power drive unit, motor and switch gear. The "E" Electric Winches are controlled by a simple single direction contactor, which can be a stand alone nylon encased unit, or a contactor housed in a waterproof box.

The motor thermal trip is connected to monitor the motor temperature, which ensures a cut out if the heat builds up to an unacceptable level, while the Lewmar safety electric deck switch can be easily wired.

Manual override facility is still available for back up, or as a means of experiencing traditional sailing.

Two + One speed comes as the standard control. It gives 2 speed Manual drive (through use of the winch handle) + 1 speed Electric Drive. Available on Lewmar Winches sizes 40/46/48ST.

Includes Power Drive Unit, Motor Gearbox, Deck Switch 69000345, Breaker, Contactor. 12v.

480343001	For 34ST Ocean Winches
480403001	For 40ST Ocean Winches
480443001	For 44ST Ocean Winches
480483001	For 48ST Ocean Winches



ELS ELECTRIC LOAD SENSING SERIES CONVERSION KIT

Lewmar's most popular Electric Range. The "ELS" Electric Winches are controlled by an Overload Protection Control Box, this allows the winch to be operated up to a high load, equivalent to the SWL (Safe Working Load) of each winch size. When this Load is reached the winch load can be increased back up to this cut out level. Safety Overload Cut Out function pioneered by Lewmar, and is a unique Lewmar feature. With Lewmar ELS, the control box dictates the speed at which the rope/sheet is recovered. The sheet is recovered rapidly at low load when sheets are slacker, and slows down as load increases. This provides speed when you need it most, and control as you tune your sheets to perfection. Two + One speed comes as the standard control. It gives 2 speed Manual drive (through use of the winch handle) + 1 speed Electric Drive. Available on Lewmar winch sizes - 40ST - 65ST. Two + Two speed available on Lewmar winch sizes 66ST - 111ST.

Includes Deck Unit, Motor Gearbox, Deck Switch 69000345, Breaker and ELS Control Box. 12v.

480403002	For all 40ST Ocean Winches
480443002	For all 44ST Ocean Winches
480463002	For all 46ST Ocean Winches
480483002	For all 48ST Ocean Winches
48050300	For all 50ST Ocean Winches
48054300	For all 54ST Ocean Winches
48058300	For all 58ST Ocean Winches
48065300	For all 65ST Ocean Winches

LEWMAR®

OCEAN ELECTRIC WINCHES

To stop the grind Lewmar powered winches provide push button control, combined with the features and benefits of the Ocean Self-Tailing winch. The powered range is available in sizes 40-111, providing quiet hands free operation on sailboats between 30 and 80 ft.(9m-24m). Combining the Ocean winch and power pack provides a perfect combination of drum speed, power and torque which ensures smooth and efficient sail trimming.

WITH 'E' SERIES CONTACTOR

Includes Deck Unit, Motor Gearbox, E-Series Contactor, Deck Switch 69000345 and Circuit Breaker

490402551	40AEST 12V Aluminum ST
490402561	40CEST 12V Chrome ST
490462551	46AEST 12V Aluminum ST
490462561	46AEST 12V Chrome ST
490482551	48AEST 12V Aluminum ST
490482561	48CEST 12V Chrome ST

WITH 'ELS' SERIES LOAD SENSING CONTROL BOX

Includes Power Drive Unit, Motor Gearbox, Deck Switch 69000345, Breaker and ELS Control Box

490482563	48AEST 12V Aluminum ST
49050201	50CEST 12V Chrome ST
49054200	54AEST 12V Aluminum ST
49054201	54CEST 12V Chrome ST
49058200	58AEST 12V Aluminum ST
49058201	58CEST 12V Chrome ST
49065200	65AEST 12V Aluminum ST
49065201	65CEST 12V Chrome ST

Deck Switches

Single direction switch. Hinged cover to prevent accidental operation. Available in 3 finishes — Grey, White & Stainless Steel

Part Number	Description
68000928	Grey Switch (Blank)
68000970	Grey Switch (Open)
68000930	White Switch (Blank)
68000971	White Switch (Open)
68000929	Stainless Steel Switch (Blank)



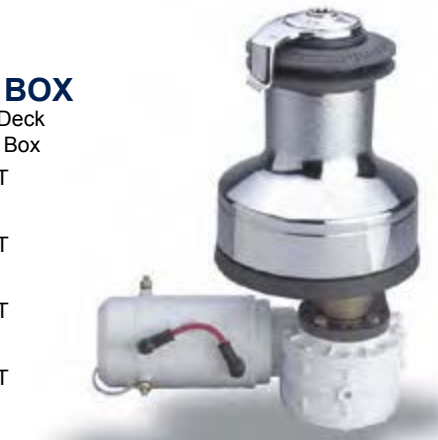
Stainless Steel Switch



Grey Switch (Open)

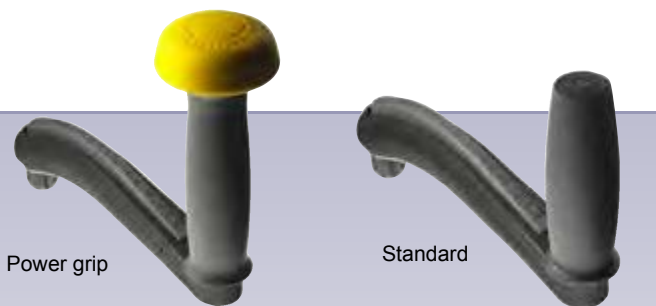


White Switch (Blank)



69000350
69000351
69000345

Open lid switch with light
Closed lid switch with light
Open lid switch



Power grip

Standard

LEWMAR® ONETOUCH WINCH HANDLES

The new Lewmar OneTouch Winch Handle is a new approach to winch handle design. Its patented 'OneTouch' mechanism allows you to squeeze the release button (which runs the entire length of the handle) and pull to unlock in one quick, easy motion. To lock-in, simply squeeze and insert into winch, so you spend less time fiddling around and more time sailing.

- 29140040** 8" locking alloy Standard grip
- 29140042** 8" locking alloy Power grip
- 29140044** 10" locking alloy Standard grip
- 29140046** 10" locking alloy Power grip



LEWMAR® TITAN PRIMARY SERIES WINCH HANDLES

The Primary series winch handles have been carefully designed for the day sailor with simple but effective features to keep costs down. The Titan Primary series is the world's biggest selling range. All Primary Series are manufactured from high grade injection moulded glass nylon. The handle is made in two sections then ultrasonically welded creating a box section designed for strength and stiffness. If one goes overboard it floats and is easy to see.

- 29145301** 8" locking, red
- 29145311** 10" locking, red

LEWMAR® TITAN CONDOR WINCH HANDLE

Specifically developed for the serious racers or large cruising yachts. Made from lightweight cast aluminum, heat treated for maximum strength and rigidity. The Condor is the perfect winch handle for any club or grand prix racer. Its unique rubber over mould will protect your yacht if its dropped.

- 29147512** 10" locking Maxi grip, blue



SEADOG LINE

LOCKING WINCH HANDLE

Die Cast Aluminum

604200



2914 1011



2914 1110



2914 1111



2914 0121

LEWMAR® WINCH HANDLES

Each handle in Lewmar's extensive range uses ball bearings for maximum efficiency. PowerGrip makes initial fast cranking with one hand both easy and comfortable, and when the load comes on and it's time to shift gear, you can use your second hand to grip the main shaft handle and do some serious grinding.

- 29141011** 8" Alloy, Locking Single grip
- 29141110** 10" Alloy (forged)
- 29141111** 10" Alloy, Locking Single grip (forged)
- 29141121** 10" Chrome, Locking (forged)
- 29140121** 10" Chrome, Locking Power Grip (forged)

LEWMAR® WINCH HANDLE POCKET

UV stabilized PVC holds any size handle and weighs only 300 grams. Pre drilled mounting holes.

29140020



Beckson

HH-3 WINCH HANDLE HOLDER

For large winch handles, top action, standard or ratchet.

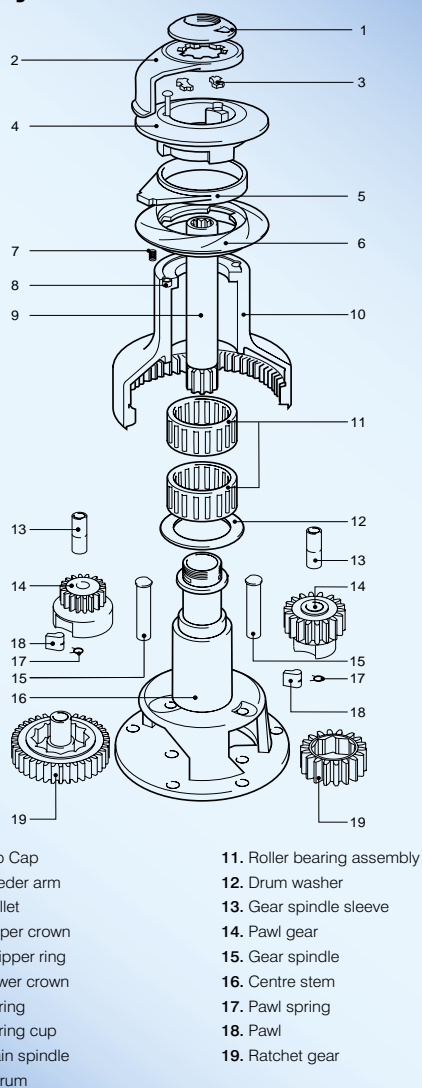
HH3



SeaForce Teak

TEAK WINCH PADS

- SFT60164** Small, 4-3/4" Dia. x 1-1/4" H
- SFT60166** Large, 6-3/8" Dia. x 1-1/4" H

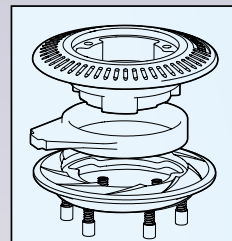
Know your Winch**LEWMAR®****LEWMAR®
SELF TAILING
WINCH PARTS 1992 AND UP****Crown kits**

include upper and lower crowns, stripper ring, screws, springs and spring cups for one winch.

48000447	Size 14, 16
48000448	Size 28, 30
48000449	Size 34, 40
48000450	Size 44, 46
48000451	Size 48
48000452	Size 50, 54
48000453	Size 58

Feeder arms, chrome

48000478	Size 14, 16
48000480	Size 30
48000482	Size 40
48000483	Size 44
48000484	Size 46
48000485	Size 48
48000486	Size 50
48000487	Size 54
48000488	Size 58
45000489	Size 64

**Top caps, chrome screw on with "O" ring**

48000443	Size 14, 16
48000444	Size 28, 30, 34, 40, 44, 48, 50, 54
48000445	Size 58, 62, 64, 65, 66

**LEWMAR®
WINCH SPARES**

- 19700100** Spares kit for winch sizes 5-44
19700200 Spares kit for winch sizes 14ST-66ST
19700300 Spares kit for 3 speed winch
19700401 Springs and large pawls for winch sizes 50-64
19700501 Springs and small pawls for winch sizes 5-48 and 52-66
19701000 Grease, 100g tube
19701100 Grease, 10.5oz jar
19701500 Winch maintenance pack includes grease, race lube (55ml), pawl springs (ten), lubricating brush, Winch Service manual
19701600 Race lube, 55ml
1260/7 Pawl spring for Lewmar winches
1260/8 Pawl for Lewmar winches
BT00209 Pawl spring for Barient/Barlow
BT00330 Pawl for Barient/Barlow
48000446 Collets (2) for self tailing winches size 16-68
B2075 Circlip holds drum on non self tailing winches



19700200
Spares Kit
14ST-66ST



19700300
Spares Kit 44-66PB



19700401
STD Large Pawls &
Springs 50-65



19700501
STD Small Pawls &
Springs 5-48 & 66



19700100
Spares Kit 5-44



19701500
Winch Maintenance
Pack



19701000
Grease — 100g



19701100
Grease — 300g



19701600
Race Lube —
55ml

LEWMAR® SYNCHRO BLOCKS

Lewmar's Synchro range is the result of a complete re-think of block design. The new range transforms performance levels in terms of speed, efficiency and handling. Scientifically optimised block geometry, a revolutionary Free-Spin self lubricating bearing adjustable cam and a self-aligning head combine to reduce friction and improve efficiency levels by up to 40% over a conventional mainsheet system. The result is that each component is synchronised with the movement of the rope-providing an easier, smoother transfer of power from deck to sail-and all with less wear on the rope. Cheeks are composite on the 50-90 mm blocks. 105 mm cheeks are aluminum.

Description	Safe Work Load		Optimum Line Size		Maximum Line Size	
	kg	lbs	mm	in	mm	in
29925001 50mm single	450	990	6	1/4	10	3/8
29925002 50mm double	450	990	6	1/4	10	3/8
29925003 50mm triple	450	990	6	1/4	10	3/8
29925004 50mm single bkt	450	990	6	1/4	10	3/8
29925005 50mm double bkt	450	990	6	1/4	10	3/8
29925009 50mm single bkt cam	450	990	6	1/4	10	3/8
29925010 50mm triple bkt cam	450	990	6	1/4	10	3/8
29925021 50mm toggle head	450	990	6	1/4	10	3/8
29925031 50mm fiddle	450	990	6	1/4	10	3/8
29925034 50mm fiddle bkt	450	990	6	1/4	10	3/8
29925037 50mm fiddle cam	450	990	6	1/4	10	3/8
29925039 50mm fiddle bkt cam	450	990	6	1/4	10	3/8
29926001 60mm single	800	1760	8	5/16	10	3/8
29926002 60mm double	800	1760	8	5/16	10	3/8
29926003 60mm triple	800	1760	8	5/16	10	3/8
29926004 60mm single bkt	800	1760	8	5/16	10	3/8
29926005 60mm double bkt	800	1760	8	5/16	10	3/8
29926006 60mm triple bkt	800	1760	8	5/16	10	3/8
29926010 60mm triple bkt cam	800	1760	8	5/16	10	3/8
29926021 60mm toggle head	800	1760	8	5/16	10	3/8
29926029 60mm single alu. shv	800	1760	8	5/16	10	3/8
29926031 60mm fiddle	800	1760	8	5/16	10	3/8
29926034 60mm fiddle bkt	800	1760	8	5/16	10	3/8
29926037 60mm fiddle cam	800	1760	8	5/16	10	3/8
29926039 60mm fiddle bkt cam	800	1760	8	5/16	10	3/8
29927201 72mm single	1100	2420	10	3/8	12	1/2
29927202 72mm double	1100	2420	10	3/8	12	1/2
29927203 72mm triple	1100	2420	10	3/8	12	1/2
29927204 72mm single bkt	1100	2420	10	3/8	12	1/2
29927205 72mm double bkt	1100	2420	10	3/8	12	1/2
29927210 72mm triple bkt cam	1100	2420	10	3/8	12	1/2
29927221 72mm toggle head	1100	2420	10	3/8	12	1/2
29927231 72mm fiddle	1100	2420	10	3/8	12	1/2
29927234 72mm fiddle bkt	1100	2420	10	3/8	12	1/2
29927237 72mm fiddle cam	1100	2420	10	3/8	12	1/2
29927239 72mm fiddle bkt cam	1100	2420	10	3/8	12	1/2
29929001 90mm single	2000	4400	12	1/2	14	9/16
29929002 90mm double	2000	4400	12	1/2	14	9/16
29929003 90mm triple	2000	4400	12	1/2	14	9/16
29929004 90mm single bkt	2000	4400	12	1/2	14	9/16
29929021 90mm toggle head	2000	4400	12	1/2	14	9/16
29929031 90mm fiddle	2000	4400	12	1/2	14	9/16
29929034 90mm fiddle bkt	2000	4400	12	1/2	14	9/16
29929039 90mm fiddle bkt cam	2000	4400	12	1/2	12	9/16
29921051 105mm single	3500	7700	14	9/16	16	5/8
29921054 105mm single bkt	3500	7700	14	9/16	16	5/8
29921050 105mm single stand up	3500	7700	14	9/16	16	5/8
29921052 105mm fiddle	3500	7700	14	9/16	16	5/8
29921055 105mm fiddle bkt	3500	7700	14	9/16	16	5/8



Single



Double



Single Bkt



Double & Bkt



Single Bkt Cam



Triple



Single Toggle Head



Triple Bkt Cam



Fiddle Bkt Cam



Fiddle



Fiddle Cam



Fiddle Bkt

LEWMAR®**CONTROL BLOCKS 30MM / 40MM / 60MM**

Ultimate handling and weight advantage. Lewmar's new high performance Synchro Control Blocks are extremely lightweight with unprecedented load bearing capability. The sheave uses MRT (Metal Replacement Technology) which, combined with the stainless steel central race and balls, deliver the ultimate efficiency and weight advantage. Cheeks use Long Fibre Technology giving exceptional strength and durability. The clever, open design facilitates easy flushing of sand and salt, for smooth running and simple maintenance.

Note: cleats are designed to hold only the load that can be applied manually.

LEWMAR®

	Description	Safe Work Load	
		kg	lb
30MM BLOCKS Max Line Size 8mm or 5/16"			
29901321	single	200	440
29901322	double	300	660
29901323	triple	500	1100
29901324	single, becket	200	440
29901325	double, becket	300	660
29901326	triple, becket	500	1100
29901328	triple cam	250	550
29901330	triple, becket & cam	300	660
29901320	single stand up	200	440
29901341	single fixed head	200	440
29901314	fixed head, becket	200	440
29901361	through deck single	200	440
29901362	through deck tandem	200	440
29901363	vertical lead block	200	440
29901365	pivoting exit block	200	440



Single Swivel Head



Double & Becket



30 mm Triple & Becket with Cam



Stand Up Single



Single Fixed Head



Web Block

40MM BLOCKS Max line size 10mm or 3/8"

29901421	single	240	528
29901424	single, becket	240	528
29901447	single, web	240	528
29901441	single, fixed head	240	528
29901420	single, stand up	240	528
29901428	single, becket, cam	240	528
29901422	double	480	1056
29901425	double, becket	480	1056
29901423	triple	720	1584
29901426	triple, becket	720	1584
29901429	triple, cam	720	1584
29901430	triple, becket, cam	720	1584
29901463	single vertical lead	240	528



Pivoting Exit Block



Vertical Lead Block



40 mm Single Becket & Cam



Through Deck Tandem



60 mm Single Ratchet & Becket

60MM BLOCKS Max Line Size 12mm or 1/2"

29901651	single	400	882
29901652	double	750	1653
29901653	triple	1000	2204
29901654	single, becket	400	882
29901655	double, becket	750	1653
29901656	triple, becket	1000	2204
29901659	single, becket, cam	400	882
29901660	triple, becket, cam	1000	2204
29901677	single web	400	882



Double



60 mm Single Ratchet & Cam



60 mm Triple Ratchet & Becket & Cam

60MM RATCHET BLOCKS Max Line Size 12mm or 1/2"

29901661	single ratchet	400	882
29901665	single ratchet & becket	400	882
29901667	single ratchet & cam	400	882
29901668	triple ratchet & cam	1000	2204
29901670	triple ratchet becket & cam	1000	2204

HTX Blocks

LEWMAR®

**NEW
2011**

Years of design and manufacturing experience, combined with collaboration with boat builders, designers, and sailors, has resulted in the new Lewmar HTX Hardware Range. Drawing upon the design of the racing range, the HTX blocks are constructed from minimal alloy parts, providing enhanced reliability.

Features

- Alloy cheeks
- High Load capacity and large line size
- Side thrust ball bearings
- Head design from Lewmar racing range with swivel head locking mechanism through a grub screw



HTX Specifications

Part Number	Size	Description	Safe Working Load		Breaking Load		Max Line Size		Weight	
			kg	lb	kg	lb	mm	in	g	oz
29195001	50	Single	800	1760	1600	3520	10	3/8	131	4.62
29195002	50	Double	800	1760	1600	3520	10	3/8		
29195003	50	Triple	800	1760	1600	3520	10	3/8		
29195004	50	Single Becket	800	1760	1600	3520	10	3/8		
29195005	50	Double Becket	800	1760	1600	3520	10	3/8		
29195031	50	Single Fiddle	800	1760	1600	3520	8	5/8		
29195034	50	Single Fiddle Becket	800	1760	1600	3520	8	5/8		
29196001	60	Single	1100	2425	2200	4850	12	1/2	200	7.05
29196002	60	Double	1100	2425	2200	4850	12	1/2		
29196003	60	Triple	1100	2425	2200	4850	12	1/2		
29196004	60	Single Becket	1100	2425	2200	4850	12	1/2		
29196005	60	Double Becket	1100	2425	2200	4850	12	1/2		
29196031	60	Single Fiddle	1100	2425	2200	4850	10	3/8		
29196034	60	Single Fiddle Becket	1100	2425	2200	4850	10	3/8		
29197201	72	Single	2000	4400	4000	8800	14	9/16	440	15.52
29197202	72	Double	2000	4400	4000	8800	14	9/16		
29197204	72	Single Becket	2000	4400	4000	8800	14	9/16		
29197231	72	Single Fiddle	2000	4400	4000	8800	12	1/2		
29197234	72	Single Fiddle Becket	2000	4400	4000	8800	12	1/2		
29199001	90	Single	3500	7700	7000	15400	16	5/8	800	28.22
29199004	90	Single Becket	3500	7700	7000	15400	16	5/8		
29199050	90	Single Stand Up	3500	7700	7000	15400	16	5/8		

Additional Information	Size 50		Size 60		Size 72		Size 90	
	mm	in	mm	in	mm	in	mm	in
Post Diameter	9.4	3/8	11.9	15/32	16.5	21/32	19.75	7/8
Shackle Pin Diameter	5	3/16	6	1/4	9.8	3/8	10	3/8
Fits Traveller Upstand	Sz1NTR		Sz2NTR		SzNTR		n/a	
Fits Block Upstand	19811000		19821000		29393000		Pad Eye 29904050	
Fits Snap Shackle	29926040		29927240		29929040		n/a	



2919 6001



2919 6002



2919 6003



2919 6004



2919 6034

LEWMAR® RACING BLOCKS

The 60mm high load, 80mm and fiddle blocks feature monocoque construction. They offer the best strength-to-weight ratio by incorporating the head block and bearing surface into the cheeks. Racing blocks all have Alloy cheeks. Low load sheaves are composite. High load and ratcheting sheaves are alloy. 60 mm and 80 mm sheaves run on dual Delrin ball races. 80 mm highload sheaves run on Torlon rollers with dual Delrin ball side thrust races.

- Extensive range
- 3 in 1 head
- Torlon rollers
- Delrin thrust balls
- Adjustable cams

LEWMAR®

Description	Sheave Diameter		Safe Working Load		Max Line Size	
	mm	in	kg	lb	mm	in
29901611 60 high load,single	60	2-3/8	800	1763	12	1/2
29901612 60 high load,double	60	2-3/8	1440	3175	12	1/2
29901613 60 high load,triple	60	2-3/8	2000	4409	12	1/2
29901614 60 high load,single,bkt	60	2-3/8	800	1763	12	1/2
29901615 60 high load,double,bkt	60	2-3/8	1440	3174	12	1/2
29901600 60 high load,stand up	60	2-3/8	800	1763	12	1/2
29901647 60 high load single, web	60	2-3/8	1400	3086	12	1/2
29901624 60 fiddle,ratchet,bkt,cam	60	2-3/8	400	882	10	3/8
29901631 60 fiddle block	60	2-3/8	400	882	10	3/8
29926040 Snap shackle adapter for 60mm blocks						
29941801 80 high load,single	80	3-1/8	1800	3968	14	9/16
29901802 80 high load,double	80	3-1/8	3240	7142	14	9/16
29901805 80 high load,double,bkt	80	3-1/8	3240	7142	14	9/16
29901811 80 single	80	3-1/8	1000	2204	12	1/2
29901812 80 double	80	3-1/8	1800	3968	12	1/2
29901813 80 triple	80	3-1/8	2200	4849	12	1/2
29901814 80 single,bkt	80	3-1/8	1000	2204	12	1/2
29901815 80 double,bkt	80	3-1/8	1800	3968	12	1/2
29901821 80 single,ratchet	80	3-1/8	800	1764	12	1/2
29901825 80 single,ratchet,bkt	80	3-1/8	800	1764	12	1/2
29901828 80 triple,ratchet,cam	80	3-1/8	2200	4849	12	1/2
29901839 80 fiddle,bkt,cam	80	3-1/8	1000	2204	12	1/2
29927240 Snap shackle adapter for 80mm blocks						



Single Ratchet
80 mm



Single



Double & Becket



Single w/Snap
Shackle 80mm



Web Block



Triple Ratchet &
Becket & Cam





LEWMAR® SNATCH BLOCKS

For general spinnaker use. Snatch blocks feature soft synthetic rubber cheeks to handle rough treatment and protect the block. Now fitted with Synchro Snap Shackle adapter.

	Safe Working Load Line Size				
	Size	kg	lb	mm	in
19810600	1	1135	2500	14	9/16
19820600	2	1590	3500	16	5/8
19830500	3	2155	4750	16	5/8



LEWMAR® SYNCHRO BLOCK UPSTANDS

	Size	Safe Work Load	
		kg	lb
29904046	30 & 40mm Control	400	990
29904050	60mm Control / Synchro	400	990
19811000	60/72mm Control / Synchro / Fiddles	800	1760
	80mm low-load Racing / Fiddles		
19821000	60mm low-load Singles	1100	2420
29393000	90mm Synchro	2000	4400



LEWMAR® PAD EYE - HALYARD

	Size	Safe Work Load	
		kg	lb
29904060	60/80	3200	7055
29904053	105	5000	11023



LEWMAR® SNAP SHACKLE ADAPTER

The innovative design of the Snap Shackle Adapter combines the convenience of conventional snap shackles with the mobility of traditional screw pin D-shackles, increasing the choice and versatility of deck mounted blocks on any performance sailing boat or cruiser. All will fit both the Ocean and Synchro block ranges as well as similar blocks made by other manufacturers.

	Size	Description	Safe Work Load	
			kg	lb
29925040	50	Synchro snap shackle	450	990
29926040	60	Synchro snap shackle	800	1760
29927240	72	Synchro snap shackle	1100	2420
29929040	90	Synchro snap shackle	2000	4400



LEWMAR® FORGED D SHACKLES

	Ocean Size	Synchro Size	Safe Work Load	
			kg	lb
19500100	1	60	775	1700
19500200	2	72	1130	2500
19500400	4		3180	7080



LEWMAR® BLOCK BEARING - DELRIN BALLS

(Per 100)

	Size	Where Used	Diameter	
			mm	in
29175022		60HL Blocks	3.2	1/8
29170022	0	60LL+80LL+105+ 130 blocks/foot blocks	4.6	3/16
29171022	1	80LL+105+155+ 175 blocks/foot blocks	6.4	1/4
29172022	2	225+250 blocks+ SZ2 MS/G cars	7.8	5/16

LEWMAR® OCEAN ORGANISERS

Flush fixings. Bushed sheaves prevent over tightening of sheaves when fastening. Can be double stacked. Wide rope angle entry. Tough interchangeable acetal or alloy sheaves.

LINE ORGANISERS

Racing organisers run on impregnated composite bearings and dual delrin ball side thrust races. Synchro 60 mm organisers run on Synchro Freespin races. All organisers have space to pass two lines between each sheave.



29139102 Ocean 40mm 2 sheave



29139104 Ocean 40mm 4 sheave



29139114 Ocean 60mm 4 sheave



29139112 Ocean 60mm 2 sheave



29906453 Racing 40 mm 3 sheave



29906654 Racing 60 mm 4 sheave

	Description	Size	Safe Work Load		Max Line Size		Length in
			kg	lbs	mm	in	
29916042	Synchro 6 sheave double	60	3700	8156	12	1/2	10-1/16
29916060	Synchro 3 sheave	60	2550	5500	12	1/2	10-1/16
29139102	Ocean 2 sheave	40	1005	2215	16	5/8	4-7/8
29139103	Ocean 3 sheave	40	1507	3322	16	5/8	6-3/4
29139104	Ocean 4 sheave	40	2010	4431	16	5/8	8-1/2
29906453	Racing 3 sheave	40	625	1378	10	5/16	8-1/8
29906654	Racing 4 sheave	60	3600	7935	14	9/16	14-1/8
29139112	Ocean 2 sheave	60	2400	5290	14	9/16	9-1/8
29139113	Ocean 3 sheave	60	3000	6613	14	9/16	12
29139114	Ocean 4 sheave	60	3600	7935	14	9/16	14-3/4
29139115	Ocean 5 sheave	60	4200	9258	14	9/16	17-5/8
29139116	Ocean 6 sheave	60	4800	10580	14	9/16	20-1/2



29916042
Synchro 6 sheave double

LEWMAR®

LEWMAR® SYNCHRO FOOTBLOCKS

Synchro footblocks feature alloy cheeks, fixing isolators and moulded base plate to prevent sealant ingress into the sheave. Available in standard and jamming formats and can be stacked to form a double footblock. The smaller 40 mm foot blocks come with a SS base plate and can be used as miniature organisers or deflectors for lines being returned to the cockpit.

	Description	Safe Working Load		Max Line Size		Length in
		kg	lb	mm	in	
29924061	40 Control line Footblock	750	1653	10	3/8	2-15/32
29924062	40 Double Control line Footblock	750	1653	10	3/8	2-15/32
29926061	60 Synchro Footblock	800	1764	10	3/8	3-27/32
29926064	60 Synchro Jamming Footblock	800	1764	10	3/8	3-27/32
29927261	72 Synchro Footblock	1200	2645	12	1/2	4-21/64
29927264	72 Synchro Jamming Footblock	1200	2645	12	1/2	4-21/64
29929061	90 Synchro Footblock	2000	4409	14	9/16	5-17/64
29929064	90 Synchro Jamming Footblock	2000	4409	14	9/16	5-17/64



Footblock single



72 Synchro Footblock

Footblock ratcheting
80 mm

Synchro control 40 mm

Synchro control
jamming 60 mm

LEWMAR® SYNCHRO CONTROL FOOTBLOCKS

Sheaves run on dual ball bearing races. Friction cams will hold up to 300kg (600lb) max.

	Description	Safe Working Load		Max Line Size		Length in
		kg	lb	mm	in	
29901360	30 single	200	440	8	5/16	2
29901460	40 single	240	528	10	3/8	2-5/8
29906601	60 single	400	882	12	7/16	3-3/8
29906602	60 double	400	882	12	7/16	3-3/8
29906604	60 single jamming left hand	400	882	12	7/16	3-3/4
29906621	60 left hand (anti-clockwise) ratchet	1400	3086	12	7/16	3-3/8
29906622	60 right hand (clockwise) ratchet	1400	3086	12	7/16	3-3/8

LEWMAR® RACING FOOTBLOCKS

Sheaves run on delrin balls or torlon rollers dependent on load. Composite sheaves on low load footblocks, alloy sheaves on high load footlocks, friction cams on low load, spring cams on high load. Jammer holding load 300 kg/660 lb maximum. Safe working loads are quoted for the whole assembly, the upper sheaves should not be loaded beyond 60% of the safe working load.

	Description	Safe Working Load		Max Line Size		Length in
		kg	lb	mm	in	
29906611	60 high load single	1400	3000	12	1/2	3-11/32
29946801	80 high load single	2400	5290	14	9/16	4-3/8
29906811	80 single	1000	2204	14	9/16	4-3/8
29906812	80 double	1000	2204	14	9/16	4-3/8
29906814	80 single jamming left hand	1000	2204	14	9/16	4-3/4
29906816	80 single jamming right hand	1000	2204	14	9/16	4-3/4

Synchro control ratchet
60 mm72 Synchro Jamming
Footblock



SINGLE SHEAVE PULLEY

Nickel plated with brass sheave. Fixed eye

Rope or
Cord Dia.

0174-12	5/32"
0174-34	3/16"
0174-1	1/4"
0174-114	5/16"
0174-112	5/16"
0174-2	7/16"



DOUBLE SHEAVE PULLEY

Nickel plated with brass sheave. Fixed eye

Rope or
Cord Dia.

0176-34	3/16"
0176-1	1/4"
0176-112	5/16"



SINGLE SHEAVE PULLEY, SWIVEL EYE

Nickel plated with brass sheave.

Rope or
Cord Dia.

0173-12	5/32"
0173-34	3/16"
0173-1	1/4"
0173-114	5/16"
0173-112	5/16"
0173-2	7/16"



DOUBLE SHEAVE PULLEY, SWIVEL EYE

Nickel plated with brass sheave.

Rope or
Cord Dia.

0178-34	3/16"
0178-1	1/4"



Keystone

STEEL SNATCH BLOCKS

Reasonably priced. Extraordinarily strong. Cast steel construction, roller bearing movement. Single and double sheaves. Galvanized for rust protection.

SGLBLK3	Single 3"	1000 lb.
SGLBLK4	Single 4"	1000 lb.
SGLBLK5	Single 5"	1500 lb.
SGLBLK6	Single 6"	2000 lb.



2904 1700



2904 2700

LEWMAR® OCEAN T-TRACK GENOA CARS

Cars fit standard 32 mm (1-1/4") T-Track. T-Track cars are available in 3 styles and cover 3 different loading levels to suit boats from 9m/30ft up to 15.5m / 50 ft.

	Size		Safe Work Load	
			kg	lb
29041700	1	Genoa car w/plunger	900	1980
29042700	2	Genoa car w/plunger	1500	3300
29172117	2	Slider with Shackle and Plunger	1500	3300



2904 2705

LEWMAR® T-TRACK CAR

	Size		Safe Work Load	
			kg	lb
29042704	2	Genoa car control line sheave	1500	3300
29442705	2	Tri roller genoa car	1500	3300

Additional Information

32mm T-Track is a universal track widely accepted and used on many boats up to 50ft.



2917 2016



2917 2015

LEWMAR® T-TRACK ACCESSORIES

29172015	Control line end stop
29172016	Track end stop

Ocean Cars Selection Guide

Application & Sheeting Position	Size	Towing Purchase (Maximum Available Purchase)	m ft	Boat Length Overall									
				7.3 24	8.5 28	10.3 34	11.5 38	13.4 44	14.6 48	16.4 54	18.2 60	21.3 70	21+ 70+
Genoa	0	2:1											
End Boom Mainsheet	0	2:1											
Mid Boom or Multihull	0	2:1											
Genoa	1	4:1 or 2:1 to Winch											
End Boom Mainsheet	1	4:1											
Mid Boom or Multihull	1	4:1											
Genoa	2	4:1 or 2:1 to Winch											
End Boom Mainsheet	2	5:1											
Mid Boom or Multihull	2	5:1											
Genoa	3	5:1 or 2:1 to Winch											
End Boom Mainsheet	3	5:1 or 2:1 to Winch											
Mid Boom or Multihull	3	5:1 or 2:1 to Winch											

Note: Size 3 also includes High Load options.

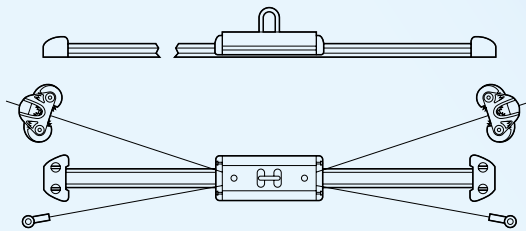
LEWMAR® MAINSHEET SYSTEMS

To simplify the process of selecting your mainsheet system Lewmar offers complete system kits in sizes 0-2. The kit comprises all component parts required to assemble a standard system for yachts up to 48 ft. All kits are supplied with Lewmar's sliding bolt track which offers the facility to retro-fit the new track to the deck using the original bolt holes. Mainsheet cars are shackle versions.



Size 0 Mainsheet System

Lewmar makes selecting your mainsheet system simple — with complete Mainsheet System Kits. Lewmar's Size 0 Ocean Mainsheet System is a complete kit made specifically for yachts up to 28 feet (8.5m) long.



Size 0 Ocean Traveller Kit — 2:1 Purchase System

2906 0152 Size 0 Ocean Traveller System

Comprises of:

2903 0100	1 x - Mainsheet Car
2917 0040	2 x - End Stop
2916 0112	1 x - 1.2m Sliding Bolt Track
2917 1010	1 x - Size 1 Dead Eye
2990 4100	2 x - Small Composite Cleat
2990 4104	2 x - Small Cam Fairlead

Boat Size: Up to 8.5m Up to 28ft

Track: Beam, Drilled or Sliding Bolt

Max. Mainsail Area:

End Boom:	16m ²	170 ft ²
Mid Boom:	12m ²	130 ft ²
Safe Working Load:	400kg	990 lbs

Size 1 & 2 Traveller Kit — 4:1 Purchase System

	Size 1	Size 2
Traveller System	29461354	29462354
Comprises of:		
1 x Mainsheet Car Shackle and 2 Double Control Line Sheave, Cleats & Becket	29431916	29432916
2 x End stop with Double Control Line sheaves	29471032	29472032
1 x Sliding Bolt Track	29161115	29162118
Track Length	1.5m	1.8m
Boat Size:	Up to 11m (36ft)	Up to 14.6m (48ft)
Max. Mainsail Area:		
End Boom:	34m ² (366ft ²)	46m ² (495ft ²)
Mid Boom:	21m ² (226ft ²)	38m ² (410ft ²)
Safe Working Load:	900kg (1980 lb)	1000kg (2000 lb)

LEWMAR® MAINSHEET AND GENOA SIZE 0 OCEAN CARS

For boats up to 8.5m/28ft. Use size 0-1 or Synchro 50mm/60mm blocks.
Suitable for 6mm (1/4") control line.

	Description	Safe Work Load	
		kg	lb
29030100	Mainsheet car w/delrin balls & shackle	450	990
29170030	Control line end stop w/sheave		
29170040	End stop		
29040600	Genoa car w/slide rods & plunger	600	1325

LEWMAR® SIZE 1 NEW TRAVELLER RANGE MAINSHEET & GENOA CARS

For boats up to 11m (36ft) upstands for 60mm blocks, option on 29431712 to fit 72mm. Control line sheaves are 30mm (1-3/16") diameter have a SWL of 525kg (115lbs) and are suitable for 8mm (5/16") control line. Genoa sheet sheaves are 60mm (2-3/8") diameter. Travellers will fit all current Ocean Size 1 tracks. TB cars run on Torlon Balls. SR cars run on Slide Rods.

	Description	Safe Work Load	
		kg	lb
29471030	Bare end Stop	585	1287
29471031	End stop single CL sheave	585	1287
29471032	End stop double CL sheave	585	1287
29471010	Becket assy (pair)	585	1287
29471011	Single CL sheave assy (pair)	585	1287
29471012	Double CL sheave assy (pair)	585	1287
29471015	Cleat assy for end stop (pair)	180	396
29471037	Plunger stop	650	
29471027	Conversion kit to re-circulate balls		
29431300	TB main sheet car with shackle	600	1329
29441321	TB car with genoa stirrup one CL sheave port	900	1980
29441331	TB car genoa stirrup one CL sheave stbd	900	1980
29441720	SR car genoa stirrup plunger stop port	1000	2200
29441730	SR car genoa stirrup plunger stop stbd	1000	2200
29171040	Track end stop		

LEWMAR® SIZE 2 NEW TRAVELLER RANGE MAINSHEET & GENOA CARS

For boats up to 15m (49ft). Upstands for 72mm blocks, option on 29432424 to fit 90mm. Control line sheave are 40mm (1-9/16") diameter have a SWL of 750kg (1659lbs) and are suitable for 10mm (3/8") control line. Also available are ball bearing sheaves - suitable for mainsheet car towing loads. Genoa sheet sheave 72mm (2-7/8") diameter. Travellers will fit all current Ocean size 2 tracks. TB cars run on Torlon Balls. SR cars run on slide rods.

	Description	Safe Work Load	
		kg	lb
29432300	TB main sheet car with shackle	1500	3300
29432400	TB main sheet car with upstand	1500	3300
29472030	Bare end stop	750	1650
29472031	End stop single CL sheave	750	1650
29472032	End stop double CL sheave	750	1650
29442321	TB car genoa stirrup one CL sheave port	1500	3300
29442331	TB car genoa stirrup one CL sheave stbd	1500	3300
29442720	SR car genoa stirrup plunger stop port	1500	3300
29442730	SR car genoa stirrup plunger stop stbd	1500	3300
29472010	Becket assy (pair)	750	1650
29472011	Single CL sheave assy (pair)	750	1650
29472012	Double CL sheave assy (pair)	750	1650
29472015	Cleat assy for end stop (pair)	180	396
29472027	Conversion kit to re-circulate balls		
29472970	Ball bearing sheave kit (x4)	240	530
29172040	Track end stop		



Car with TB (Torlon Balls)
& Shackle



Car with TB (Torlon Balls)
& Upstand



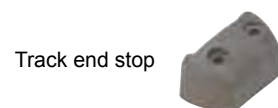
Car with TB (Torlon Balls), Genoa
Stirrup & Single sheave



SR (Slide Rods) Car Genoa Stirrup
Plunger stop



Becket Assy (pair)



Track end stop



Single CL sheave assy (pair)



Double CL sheave assy (pair)

LEWMAR® SLIDING BOLT TRACK

Enables you to use the same bolt holes that hold the original track. It is used for cars with control lines.

		m	ft
29161115	size 1	1.5	4'11"
29161120	size 1	2.0	6'7"
29161130	size 1	3.0	9'10"
29162115	size 2	1.5	4'11"
29162120	size 2	2.0	6'7"
29162130	size 2	3.0	9'10"



LEWMAR® BEAM TRACK

Used when spanning cockpits or companion way hatches.

		m	ft
29160315	size 0	1.5	4'11"
29161315	size 1	1.5	4'11"
29161320	size 1	2.0	6'7"
29162315	size 2	1.5	4'11"
29162320	size 2	2.0	6'7"



LEWMAR® 32mm T-TRACK

32mm (1-1/4") wide T-Track has been in service for many years and is still currently used on many boats.

	Length m
29166215	1.5m
29166225	2.5m
29166230	3m



LEWMAR® DRILLED PLUNGER TRACK

General purpose track, use with plunger stop cars.

		m	ft
29160415	size 0	1.5	4'11"
29160420	size 0	2	6'7"
29161415	size 1	1.5	4'11"
29161420	size 1	2	6'7"
29161430	size 1	3	9'10"
29162415	size 2	1.5	4'11"
29162420	size 2	2	6'7"
29162430	size 2	3	9'10"



LEWMAR® CAR BEARING BALLS

TORLON (Per 100)

	Size	Diameter	
		mm	in
29171021	1	6.4	1/4
29172021	2	7.8	5/16
29173021	3	9.5	3/8
29174021	4	12.7	1/2



DELFIN (Per 100)

	Size	Diameter mm	in
29175022		3.2	1/8
29170022		4.6	3/16
29171022		6.4	1/4



LEWMAR® CAR BEARING - SLIDE RODS

(Per Pair)

	Size	Where Used	Diameter	
			mm	in
29170026	0	SZ 0 cars	4.6	3/16
29171026	1	SZ 1 cars	6.4	1/4
29172026	2	SZ 2 cars	7.8	5/16
29173026	3	SZ 3 cars	9.5	3/8



BOOM BRAKE

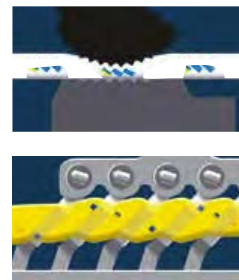
Gybing remains one of the most challenging operations on a sailing boat even for experienced sailors and can possibly generate injuries and material damage. Gyb'Easy is an efficient and safe solution to reduce such risks. Thanks to the frictions of the specific line called Gyb'Flex passing over the boom brake, the boom is allowed to gybe smoothly and without jerks. It takes a few minutes to install it on a eye strap of the boom. Two different fittings can be implemented to fit with all the deck configurations.

WIC7150

LEWMAR® ROPE CLUTCH FEATURES

Lewmar's award winning rope clutch redefined rope clutch technology, and the reputation has been continuously reinforced by magazine and independent tests. It remains the only true clutch on the market in that it can be released under load due to its unique variable geometry handle and the grip pattern of the dominoes.

- Supplied decals to identify line function
- Domino mechanism doesn't damage rope
- For easy installation the doubling plates under the fastenings and spring are located at the base of the unit well clear of deck fastenings

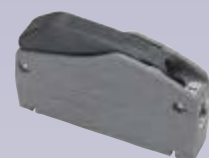


LEWMAR®



Rope Clutch Selection Guide

		Boat Length Overall											
		m	7.6	8.8	10.1	10.7	11.3	11.9	12.5	14.6	16.8	18.9	21.5
		ft	25	29	33	35	37	39	41	48	55	62	70
Application	Main												
	Halyards												
	Genoa												
Gooseneck	Spinnaker												
	Reef Lines												
	Outhaul												
Pole/Boom Lift	Flattener												
	Spin Pole Uphaul												
	Spin Pole Down Haul												
Furling Lines	Heel Lift												
	Main Boom Topping Lift												
	Genoa												
Control Lines	Main												
	Sheets												
	Mainsheet 4:1 Purchase												
Control Lines	Mainsheet Car (2:1 Purchase)												
	Genoa Car (2:1 Purchase)												
	Pole Outhaul												
Control Lines	Kicking Strap/Vang												



SINGLE ROPE CLUTCH



DOUBLE ROPE CLUTCH



TRIPLE ROPE CLUTCH

LEWMAR® D1 ROPE CLUTCH

High load applications on boats up to 9.7m/32ft, low load and control line applications on larger boats. Safe working load with Max. Dia. line: 500kg/1100lb.

		Line size	
		mm	in
29101108	single	6-8	1/4-5/16
29101110	single	8-10	5/16-3/8
29101112	single	10-12	3/8-7/16
29101208	double	6-8	1/4-5/16
29101210	double	8-10	5/16-3/8
29101212	double	10-12	3/8-7/16
29101308	triple	6-8	1/4-5/16
29101310	triple	8-10	5/16-3/8
29101312	triple	10-12	3/8-7/16
29100010	Replacement handle		

LEWMAR® D1 ROPE CLUTCH DIMENSIONS

Size	Length		Width		Height		Line Entry	
	mm	in	mm	in	mm	in	mm	in
Single	126	5	32.0	1.3	72	2.8	27	1.1
Double	126	5	57.85	2.3	72	2.8	27	1.1
Triple	126	5	83.7	3.3	72	2.8	27	1.1

LEWMAR® D2 ROPE CLUTCH

High load applications on boats up to 16.8m/55ft, low load and control line applications on larger boats. Safe working load with Max. Dia. line: 1200kg/2650lb.

		Line size	
		mm	in
29101410	single	8-10	5/16-3/8
29101412	single	10-12	3/8-1/2
29101414	single	12-14	1/2-9/16
29102410	double	8-10	5/16-3/8
29102412	double	10-12	3/8-1/2
29102414	double	12-14	1/2-9/16
29103410	triple	8-10	5/16-3/8
29103412	triple	10-12	3/8-1/2
29103414	triple	12-14	1/2-9/16
29101501	Replacement handle		

LEWMAR® D2 ROPE CLUTCH DIMENSIONS

Size	Length		Width		Height		Line Entry	
	mm	in	mm	in	mm	in	mm	in
Single	156	6.14	38	1.5	88	3.4	26	1
Double	156	6.14	68.5	2.7	88	3.4	26	1
Triple	156	6.14	99	3.9	88	3.4	26	1

LEWMAR®

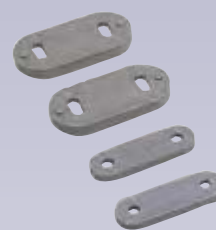
eye strap



cam fairlead



feeder loop



wedge

**LEWMAR®
SMALL AND MEDIUM CLEATS**

Using state of the art materials developed by the automotive industry and refined for marine applications, Lewmar is back in the cleat market after an absence of 25 years. Modern materials use additives to enhance performance, whether it be wear, lubrication or brute strength.

All the components of this new cleat use different compounds to maximize performance.

- Low line entry load
- High holding load
- Constant tension springs
- Wash out bearing slots
- Split base fairlead to facilitate continuous line installations

	Description	Safe Work Load		Max Line Size	
		kg	lb	mm	in
29104100	Small - composite cleat	120	264	2-8	5/64-5/16
29104110	Medium - composite cleat	180	396	4-12	5/32-1/2
29104103	Small - eye strap (pair)	-	-	2-8	5/64-5/16
29104113	Medium - eye strap (pair)	-	-	4-12	5/32-1/2
29104104	Small - cam fairlead	-	-	2-8	5/64-5/16
29104114	Medium - cam fairlead	-	-	4-12	5/32-1/2
29104116	Medium - feeder loop	-	-	4-12	5/32-1/2
29904115	Small feeder loop	-	-	2-8	5/64-5/16

2910 4100
2910 4110**LEWMAR®
CLEATS**

	Size	Description	Safe Working Load		Line Size	
			kg	lb	mm	in
29904101	Small	Cleat-alloy	140	309	2-6	3/32-1/4
29904111	Medium	Cleat-alloy	200	441	4-10	5/32-7/16

**LEWMAR®
BULLS EYE-WITH STAINLESS
STEEL INSERT (PAIR)**

	Size	Line size	
		mm	inch
29904117	Medium	12	1/2
29904118	Large	18	3/4

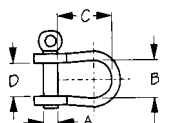
**LEWMAR®
SERVO CLEATS**

	Fits Size	Fits	Line Size		Centre	
			mm	inch	mm	in
B2827	1	sz 1 Fiddle & sz 3 control line	6-12	1/4-1/2	41	1-5/8
B2830	1	sz1 Triple & sz 1, 2, 3 control line	6-12	1/4-1/2	36	1-7/16
B2828	2	Triple & fiddle sz 2	10-14	1/2-3/8	52	2-1/16
B2829	3	Fiddle sz 3	10-16	3/8-5/8	52	2-1/16



SEADOG LINE BOW SHACKLE

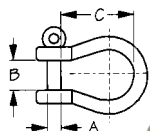
Stamped 304 stainless.



	A	B	C	D	Breaking strength lbs
140106	1/4"	5/8"	15/16"	9/16"	4,400
140108	5/16"	11/16"	1-1/4"	11/16"	6,600

SEADOG LINE BOW SHACKLE

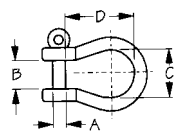
Investment cast 316 stainless body



	A	B	C
147054	3/16"	5/16"	11/16"
147056	1/4"	1/2"	1-1/16"
147058	5/16"	5/8"	1-7/16"
147060	3/8"	13/16"	1-13/16"
147062	1/2"	1"	2-5/16"
147066	5/8"	1-1/4"	2-15/16"
147069	3/4"	1-7/16"	3-7/16"
147072	7/8"	1-3/4"	3-7/8"
147075	1"	1-15/16"	4-7/16"

SEADOG LINE BOW SHACKLE

Forged 316 stainless.



	A	B	C	D	Breaking strength lbs
147203	5/32"	5/16"	9/16"	11/16"	1,540
147204	3/16"	3/8"	11/16"	3/4"	2,200
147206	1/4"	1/2"	13/16"	1-1/4"	3,300
147208	5/16"	5/8"	1"	1-1/4"	6,600
147210	3/8"	13/16"	1-1/4"	1-3/8"	9,900
147212	1/2"	1"	1-1/2"	1-3/4"	15,400



SELF-LOCKING BOW SHACKLES

Forged in 316L stainless steel. Patented Self-locking pin to avoid accidental release due to vibrations. Made in France.



	Pin Dia. in.	A in.	B in.	Break Load lbs
WIC1242	3/16	29/32	13/32	2200
WIC1243	1/4	1-3/32	15/32	3300
WIC1244	5/16	1-15/32	5/8	5950
WIC1245	13/32	1-27/32	25/32	9480
WIC1246	15/32	2-1/8	15/16	13200



CAPTIVE PIN BOW SHACKLES

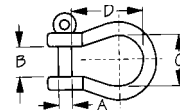
Forged in 316L stainless steel. Patented Self-locking pin cannot be dropped when opened. Made in France.



	Pin Dia. in.	A in.	B in.	C in.	Break Load lbs
WIC1441	5/32	11/16	5/16	3/16	2200
WIC1442	3/16	29/32	13/32	1/4	3300
WIC1443	1/4	1-1/16	15/32	9/32	4850
WIC1444	5/16	1-15/32	5/8	11/32	8150

SEADOG LINE CAPTIVE BOW SHACKLE

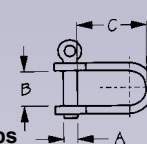
Forged 316 stainless.



	A	B	C	D	Breaking strength lbs
147223	5/32"	5/16"	5/8"	15/16"	1,540
147224	3/16"	7/16"	11/16"	1"	2,200
147226	1/4"	1/2"	13/16"	1-1/4"	3,300
147228	5/16"	11/16"	1-1/16"	1-9/16"	6,600
147230	3/8"	13/16"	1-1/4"	2"	9,900

SEADOG LINE D-SHACKLE

Stamped 304 stainless.

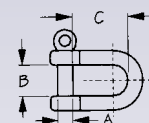


	A	B	C	Breaking strength lbs
140041	5/32"	3/8"	5/8"	1,100
140051	3/16"	7/16"	11/16"	2,640
140052	3/16"	5/8"	1"	2,640
140053	3/16"	5/8"	1-7/16"	2,640
140054	3/16"	1/2"	1"	2,640
140060	1/4"	5/8"	15/16"	3,080
140062	1/4"	9/16"	1-5/8"	6,600
140082	5/16"	3/4"	1-5/8"	6,600



SEADOG LINE D-SHACKLE

Investment cast 316 stainless body

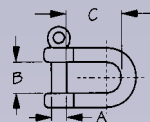


	A	B	C
147004	3/16"	5/16"	9/16"
147006	1/4"	1/2"	13/16"
147008	5/16"	5/8"	1-1/8"
147010	3/8"	13/16"	1-3/8"
147012	7/16"	1"	1-5/8"
147016	5/8"	1-1/4"	2-3/16"
147019	3/4"	1-1/2"	2-5/8"
147022	7/8"	1-3/4"	3"
147025	1"	2"	3-7/16"



SEADOG LINE**D-SHACKLE**

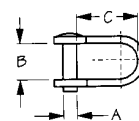
Forged 316 stainless.



	A	B	C	Breaking strength lbs
147103	5/32"	3/8"	11/16"	1,540
147104	3/16"	7/16"	11/16"	2,200
147106	1/4"	1/2"	3/4"	3,300
147108	5/16"	11/16"	1-1/4"	6,600
147110	3/8"	13/16"	1-3/8"	9,900
147112	7/16"	15/16"	1-1/2"	15,400

**SEADOG LINE****SAILMAKER D-SHACKLE**

Stamped 304 stainless.

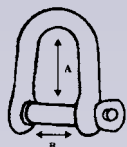


	A	B	C	Breaking strength lbs
140141	5/32"	3/8"	5/8"	1,100
140151	3/16"	7/16"	11/16"	2,640
140152	3/16"	5/8"	1"	2,640
140153	3/16"	5/8"	1-7/16"	2,640
140154	3/16"	1/2"	1-1/16"	2,640
140156	1/4"	5/8"	1"	3,080

**Wichard****SELF LOCKING D-SHACKLES**

Forged in 316L stainless steel.

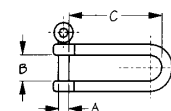
Patented Self-locking pin to avoid accidental release due to vibrations. Made in France.



	Pin Dia. in.	A in.	B in.	Break Load lbs
WIC1201	5/32	17/32	5/16	1550
WIC1202	3/16	5/8	13/32	2200
WIC1203	1/4	25/32	15/32	3525
WIC1204	5/16	1-1/32	5/8	5950
WIC1205	13/32	1-5/16	25/32	9480
WIC1206	15/32	1-17/32	15/16	13200
WIC1207	9/16	1-55/64	1-7/64	17630

**SEADOG LINE****LONG D-SHACKLE**

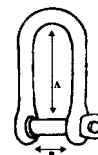
Forged 316 stainless.



	A	B	C	Breaking strength lbs
147153	5/32"	5/16"	1-5/16"	1,540
147154	3/16"	7/16"	1-1/2"	2,200
147156	1/4"	1/2"	1-13/16"	3,300
147158	5/16"	11/16"	2-7/16"	6,600
147160	3/8"	15/16"	3"	9,900

**Wichard****SELF-LOCKING LONG D SHACKLES**

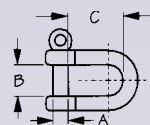
Forged in 316L stainless steel. Patented Self-locking pin to avoid accidental release due to vibrations. Made in France.



	Pin Dia. in.	A in.	B in.	Break Load lbs
WIC1211	5/32	7/8	5/16	1540
WIC1212	3/16	1-5/32	13/32	2200
WIC1213	1/4	1-5/16	15/32	3525
WIC1214	5/16	1-25/32	5/8	5950
WIC1215	13/32	2-5/32	25/32	9480

**SEADOG LINE****CAPTIVE PIN D-SHACKLE**

Forged 316 stainless.



	A	B	C	Breaking strength lbs
147123	5/32"	3/8"	11/16"	1,540
147124	3/16"	7/16"	11/16"	2,200
147126	1/4"	1/2"	3/4"	3,300
147128	5/16"	11/16"	1-1/8"	6,600
147130	3/8"	13/16"	1-3/8"	9,900
147132	1/2"	15/16"	1-1/2"	15,400

**Wichard****CAPTIVE PIN LONG SHACKLES**

Forged in 316L stainless steel. Patented Self-locking pin cannot be dropped when opened. Made in France.



	Pin Dia. in.	A in.	B in.	C in.	Break Load lbs
WIC1411	5/32	1-7/32	5/16	3/16	2200
WIC1412	3/16	1-17/32	13/32	1/4	3300
WIC1413	1/4	1-13/16	15/32	9/32	4850
WIC1414	5/16	2-7/16	5/8	11/32	7930

**Wichard****CAPTIVE PIN D-SHACKLES**

Forged in 316L stainless steel. Patented Self-locking pin cannot be dropped when opened. Made in France.

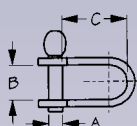


	Pin Dia. in.	A in.	B in.	C in.	Break Load lbs
WIC1401	5/32	1/2	5/16	3/16	2200
WIC1402	3/16	5/8	13/32	1/4	3300
WIC1403	1/4	25/32	15/32	9/32	4850
WIC1404	5/16	1-1/32	5/8	11/32	7930
WIC1405	13/32	1-5/16	25/32	7/16	11450

SEADOGLINE**KEY PIN SHACKLE**

Stamped 304 stainless.

	A	B	C	Breaking strength lbs
140204	5/32"	7/16"	3/4"	1,320
140205	3/16"	5/8"	1-7/16"	2,640
140206	3/16"	1/2"	1"	2,640
140207	1/4"	5/8"	1-9/16"	4,400
140208	1/4"	9/16"	1"	4,400
140210	5/16"	13/16"	1-5/8"	6,600

**Wichard****KEY PIN SHACKLES**

Forged in 316L stainless steel.

Key pin shackles offer many advantages. The pin can easily be opened by a single half turn, but remains captive within the body of the shackle.

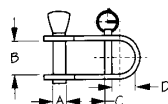
Made in France.

	Pin Dia.	A	B	Break Load lbs
WIC1432	3/16	1-7/16	1/2	2200
WIC1433	1/4	1-3/4	5/8	3300
WIC1434	5/16	2-5/16	27/32	5060

**SEADOGLINE****HALYARD SHACKLE—LOOSE PIN**

Stamped 304 stainless.

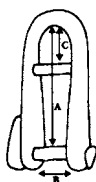
	A	B	C	D	Breaking strength lbs
140234	3/16"	1/2"	9/16"	3/8"	1,540
140235	3/16"	5/8"	13/16"	1/2"	1,540
140236	1/4"	5/8"	1"	1/2"	3,300
140238	5/16"	13/16"	1-1/16"	7/16"	4,400

**Wichard****KEY PIN HALYARD SHACKLES**

Forged in 316L stainless steel.

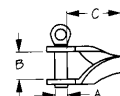
Key pin shackles offer many advantages. The pin can easily be opened by a single half turn, but remains captive within the body of the shackle. The bar allows the line, thimble or grommet to remain attached to the shackle. Made in France.

	Pin Dia. in.	A in.	B in.	C in.	Break Load lbs
WIC81432	3/16	1-7/16	1/2	15/32	2640
WIC81433	1/4	1-3/4	5/8	19/32	3750
WIC81434	5/16	2-5/16	27/32	25/32	5510

**SEADOGLINE****TWISTED SHACKLE**

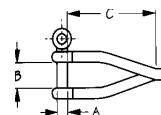
Stamped 304 stainless.

	A	B	C	Breaking strength lbs
140174	3/16"	7/16"	7/8"	2,640
140175	3/16"	7/16"	1-5/16"	2,640
140176	1/4"	9/16"	1-3/8"	4,400
140178	5/16"	11/16"	1-1/2"	6,600

**SEADOGLINE****TWISTED SHACKLE**

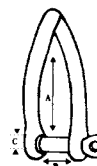
Forged 316 stainless.

	A	B	C	Breaking strength lbs
147403	5/32"	5/16"	1-1/4"	1,540
147404	3/16"	3/8"	1-1/2"	2,200
147406	1/4"	1/2"	1-13/16"	3,300
147408	5/16"	5/8"	2-1/4"	6,600
147410	3/8"	13/16"	2-3/4"	9,900

**Wichard****CAPTIVE PIN TWISTED SHACKLES**

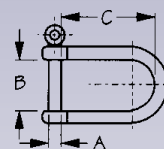
Forged in 316L stainless steel. Patented Self-locking pin cannot be dropped when opened. Made in France.

	Pin Dia. in.	A in.	B in.	C in.	Break Load lbs
WIC1422	3/16	1-15/32	13/32	1/4	3300
WIC1423	1/4	1-3/4	15/32	9/32	4600
WIC1424	5/16	2-5/16	5/8	11/32	8150

**SEADOGLINE****WIDE D-SHACKLE (MOORING BUOY SHACKLE)**

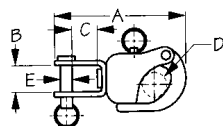
Forged 316 stainless.

	A	B	C	Breaking strength lbs
147184	3/16"	13/16"	1-7/16"	2,200
147186	1/4"	1-1/8"	1-11/16"	3,000
147188	5/16"	1-3/8"	2-1/8"	6,000
147190	3/8"	1-11/16"	2-3/4"	9,000



SEADOG LINE**TOGGLE SNAP SHACKLE**

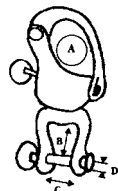
Investment cast 316 stainless.



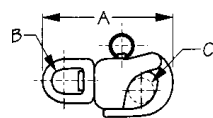
	A	B	C	D	E
142702	2-11/16"	9/16"	3/8"	9/16"	1/4"
142902	3-5/16"	9/16"	9/16"	3/4"	1/4"

Wichard**"HR" CLEVIS PIN SWIVEL SNAP SHACKLES**

Forged in HR stainless steel. Open easily under load, even at a distance (with a line or webbing). Indispensable for spinnakers, they are useful for any application which requires release under load (towing, lifting or material handling). Made in France.



	Length in.	A in.	B in.	C in.	Dia. D in.	Break Load lbs
WIC2474	2-3/4	5/8	15/32	19/32	1/4	3520
WIC2476	3-7/8	13/16	11/16	15/32	9/32	8370
WIC2478	4-3/4	1-1/32	1-1/16	1-11/16	7/16	15430

**SEADOG LINE****SWIVEL SNAP SHACKLE**

Investment cast 316 stainless.

	A	B	C
142700	2-11/16"	1/2"	9/16"
142900	3-1/2"	5/8"	3/4"

Wichard**"HR" SWIVEL EYE SNAP SHACKLES**

Forged in HR stainless steel. Open easily under load, even at a distance (with a line or webbing). Indispensable for spinnakers, they are useful for any application which requires release under load (towing, lifting or material handling). Made in France.



	Length in.	A in.	B in.	Break Load lbs
WIC2473	2-3/4	5/8	7/16	4400
WIC2475	3-1/2	13/16	9/16	8150
WIC2477	4-3/4	1-1/32	1-3/16	15430

Wichard**TRIGGER SNAP SHACKLES**

Forged in HR s/s. Ideal for spinnaker sheets. Outstanding working loads. Opens manually or with a fid. Fast rotating swivel. Designed and made in France.



Swivel Eye	Length	A	B	Break Load
WIC2653	3-3/8"	11/16"	7/16"	7270 lbs
WIC2655	4-1/8"	13/16	9/16"	9030 lbs

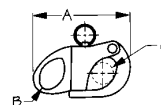
Large Bail

WIC2755	4-1/2"	13/16"	1"	8800 lbs
----------------	--------	--------	----	----------

**Wichard****QUICK RELEASE SNAP SHACKLES "HR"**

Forged in HR s/s. Ideal for spinnaker sheets. Outstanding working loads. Control line for easy release. Fast rotating swivel. Designed and made in France.

With Swivel	Length	A	B	Break Load
WIC2674	3-5/32"	5/8"	15/32"	5070 lbs
WIC2675	3-17/32"	25/32"	1/2"	7050 lbs

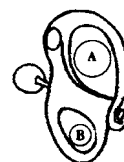
**SEADOG LINE****FIXED SNAP SHACKLE**

Investment cast 316 stainless.

	A	B	C
143520	2-1/4"	3/8"	9/16"
143660	2-13/16"	1/2"	3/4"

**Wichard****FIXED EYE**

Forged from high resistance "HR" stainless steel (except WIC2470).



	Length in.	A in.	B in.	Break Load lbs
WIC2470	1-3/8	5/16	1/4	880
WIC2471	2	5/8	13/32	4400
WIC2472	2-3/4	13/16	1/2	6600

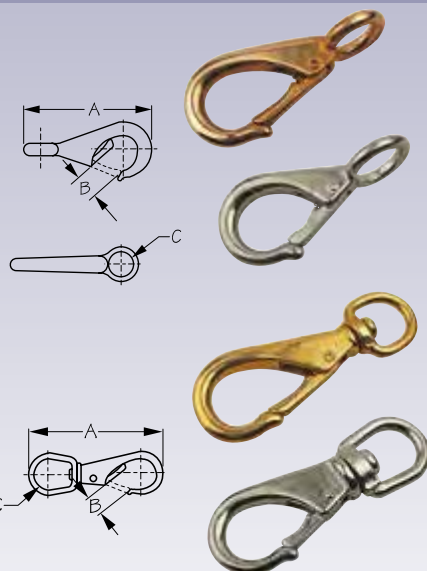
Wichard**LANYARD**

Lanyard to open a snap shackle, a snatch block.

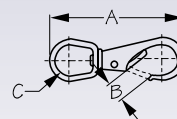
**WIC9301**

SEADOGLINE**FAST EYE BOAT SNAP**

Sand cast brass	Cast 316 stainless	Stainless steel	Bronze	Size	A	B	C
139120	146120	249SS-0		0	2-1/8"	1/4"	7/16"
139121	146121	249SS-1	249B-1	1	2-7/8"	5/16"	5/8"
139122	146122			2	3-3/16"	1/2"	3/4"
139123	146123	249SS-3	249B-3	3	3-13/16"	9/16"	3/4"

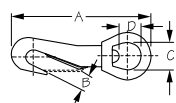
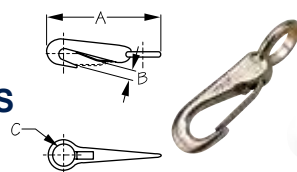
**SEADOGLINE****SWIVEL EYE BOAT SNAP**

Sand cast brass	Cast 316 stainless	Stainless steel	Bronze	Size	A	B	C
139131	146131	251SS-1	251B-1	1	3-3/16"	3/8"	5/8"
139132	146132	251SS-2	251B-2	2	3-11/16"	1/2"	3/4"
139133	146133	251SS-3	251B-3	3	4-1/2"	9/16"	3/4"

**SEADOGLINE****FAST EYE BABY SNAPS**

Die cast manganese bronze.

	A	B	C
138420	1-13/16"	1/4"	7/16"

**SEADOGLINE****SWIVEL EYE BABY SNAP**

Die cast manganese bronze.

	A	B	C	D	Finish
131042	2-1/16"	1/4"	7/16"	5/16"	Bronze
131045	2-1/16"	1/4"	7/16"	5/16"	Chrome

**SEADOGLINE****TRIGGER SNAP**

Die cast manganese bronze.

	Length	Eye
136800	2-9/16"	1/2"

**SEADOGLINE****TRIGGER SNAP**

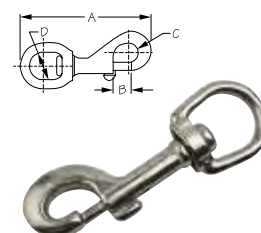
Investment Cast 316 Stainless.

	Length	Eye
146048	2-11/16"	1/2"

**SEADOGLINE****SWIVEL EYE BOLT SNAP**

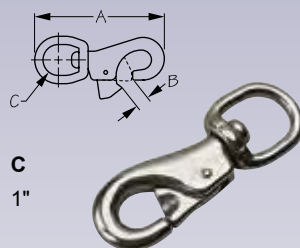
Investment Cast 316 Stainless.

	A	B	C
146590	3-9/16"	5/16"	3/4"

**SEADOGLINE****BULL NOSE SNAP**

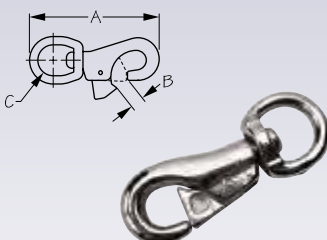
Investment Cast 316 Stainless.

	A	B	C
146333	4-1/2"	1/2"	1"

**SEADOGLINE****BULL NOSE SNAP**

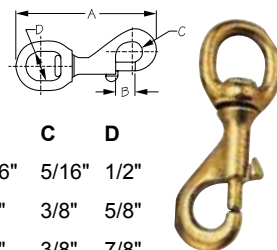
Die Cast Zinc Chrome Plated.

	A	B	C
148333	4-1/8"	9/16"	11/16"

**SEADOGLINE****SWIVEL EYE BOLT SNAP**

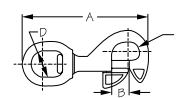
Die Cast Manganese Bronze

Sea-Dog	Keystone	A	B	C	D
136012		2-11/16"	5/16"	5/16"	1/2"
136016	225B-58	3-1/8"	3/8"	3/8"	5/8"
136021	225B-34	3-3/16"	3/8"	3/8"	7/8"
136025	225B-1	3-1/2"	7/16"	3/8"	1"
	225B-114	4-11/16"	9/16"	5/8"	1-1/4"
136590		3-5/16"	7/16"	1/2"	11/16"

**SEADOGLINE****HALYARD SNAP**

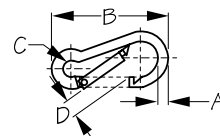
Die cast manganese bronze.

	A	B	C
136100	3-1/2"	3/8"	3/4"

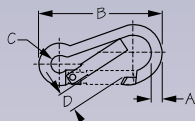


SNAP HOOKS

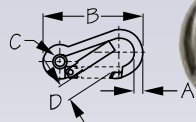
Mild Steel Electro Galvanized	Mild Steel Electro Galvanized	Stainless Steel	AISI 316 Stainless	A	B	C	D	Breaking Strength lbs
2450-6	156060	2450SS-6	151560	1/4"	2-3/8"	5/16"	5/16"	560 galv/700 ss
2450-8	156080	2450SS-8	151580	5/16"	3-1/8"	7/16"	3/8"	1,400
2450-10	156100	2450SS-10	151600	3/8"	4"	9/16"	1/2"	1,600
n/a	156120	2450SS-11	151620	7/16"	4-3/4"	3/4"	5/8"	2,000
n/a	156140	n/a	n/a	1/2"	5-9/16"	3/4"	3/4"	2,800
n/a	156160	n/a	n/a	1/2"	6-1/4"	7/8"	7/8"	6,000

**SEADOGLINE****SNAP HOOK**AISI 316 stainless, **key lock** system.

	A	B	C	D	Breaking Strength lbs
151060	1/4"	2-3/8"	3/8"	3/8"	660
151080	5/16"	3-1/8"	7/16"	7/16"	1,700
151100	3/8"	4"	9/16"	5/8"	2,600
151120	7/16"	4-3/4"	3/4"	11/16"	4,400

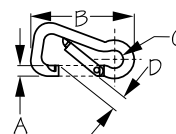
**SEADOGLINE****SNAP HOOK WITH EYE INSERT**AISI 316 stainless, **key lock** system.

	A	B	C	D	Breaking strength lbs
151065	1/4"	2-3/8"	1/4"	3/8"	660
151085	5/16"	3-1/8"	3/8"	7/16"	1,700
151105	3/8"	4"	7/16"	9/16"	2,600
151125	7/16"	4-3/4"	9/16"	11/16"	4,400

**SEADOGLINE****ASYMMETRICAL SNAP**

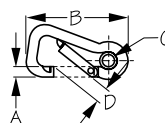
AISI 316 stainless steel snap.

	A	B	C	D	Breaking Strength lbs.
150060	1/4"	2-3/8"	5/16"	7/16"	1,160
150080	5/16"	3-1/4"	7/16"	1/2"	2,300
150100	3/8"	4"	9/16"	3/4"	3,600
150120	7/16"	4-3/4"	13/16"	15/16"	6,600

**SEADOGLINE****ASYMMETRICAL SNAP WITH EYE INSERT**

AISI 316 stainless steel snap.

	A	B	C	D	Breaking Strength lbs.
150065	1/4"	2-3/8"	1/4"	7/16"	1,160
150085	5/16"	3-1/4"	7/16"	1/2"	2,300
150105	3/8"	4"	9/16"	11/16"	3,600
150125	7/16"	4-3/4"	11/16"	15/16"	6,600

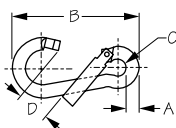
**SEADOGLINE****SNAP LINK**

AISI 316 Stainless

	Stock dia.	Length	Jaw	Breaking Strength
152080	5/16"	3-3/16"	5/8"	2600 lbs.
152100	7/16"	3-15/16"	3/4"	5390 lbs.

**SEADOGLINE****SNAP HOOK OFFSET GATE**AISI 316 stainless, **key lock** system.

	A	B	C	D	Breaking strength
151082	5/16"	3-1/8"	3/8"	3/4"	1,700
151102	3/8"	4"	1/2"	7/8"	2,600
151122	7/16"	4-3/4"	11/16"	1-1/16"	4,400

**SEADOGLINE****SNAP LINK WITH EYE**

AISI 316 Stainless

	Stock dia.	Length	Jaw	Eye	Breaking Strength
152085	5/16"	3-3/16"	9/16"	7/16"	2600 lbs.
152105	7/16"	3-15/16"	11/16"	9/16"	5390 lbs.





SIMPLE MOORING HOOKS

The mooring hooks can be adapted for all types of boat hooks (not supplied). They are an economical and simple solution for fastenings to mooring buoys.

WIC92326	4" L. 1/2" rope
WIC92327	4-23/32" L. 5/8" rope
WIC92328	6-11/16" L. 1 1/16" rope

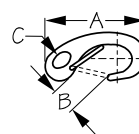


SEADOG LINE

SPRING GATE SNAP HOOK

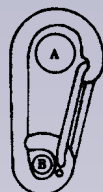
Investment cast 316 stainless.

	A	B
154250	2"	7/16"
154270	2-3/4"	7/16"
154300	3-15/16"	15/16"



CARBINE SNAP HOOK - PATENTED

Simple, strong and safe, all these hooks employ the famous Wichard torsion spring. Sail snaps can be operated with one hand, so the other is free to hold onto the boat. Made in France.



SYMMETRIC CARBINE HOOKS

	Dia.	Length	A	B	B.L. lbs.
WIC2313	1/4"	2-3/8"	13/32"	5/16"	1320
WIC2315	5/16"	3-5/32"	1/2"	11/32"	2860
WIC2316	13/32"	4"	19/32"	1/2"	5500
WIC2317	15/32"	4-5/8"	13/16"	11/16"	7930



SYMMETRIC CARBINE HOOKS WITHOUT EYE

	Dia.	Length	A	B	B.L. lbs.
WIC2333	1/4"	2-3/8"	13/32"	5/16"	1320
WIC2335	5/16"	3-5/32"	1/2"	1/2"	3520
WIC2336	13/32"	4"	19/32"	9/16"	5500
WIC2337	15/32"	4-5/8"	13/16"	5/8"	8400



ASYMMETRIC CARBINE HOOKS

	Dia.	Length	A	B	B.L. lbs.
WIC2323	1/4"	2-3/8"	7/16"	5/16"	1760
WIC2325	5/16"	3-5/32"	19/32"	7/16"	3300
WIC2326	13/32"	4"	23/32"	1/2"	5500
WIC2327	15/32"	4-5/8"	1"	5/8"	9925



"ONE HAND" SAIL SNAPS

Brass

	Length	Break Load
WIC72486	2"	220 lbs
WIC72483	2-5/32"	400 lbs
WIC72487	2-9/16"	550 lbs



SNAP HOOK

Forged in 316L stainless steel. Made in France

	L	A	B	B.L. lbs
WIC2480	2"	1/4"	11/32"	660
WIC2481	3"	25/32"	13/32"	1540
WIC2482	4"	1/2"	5/8"	3300



SNAP SWIVEL

Forged in 316L stainless steel. Made in France

	L	A	B	B.L. lbs
WIC2384	2-3/4"	1/2"	5/16"	660
WIC2385	4"	3/4"	15/32"	1650



DOUBLE ACTION SAFETY HOOK

This double action safety hook operates using a patented, one-hand activated twin trigger function to open the gate. The hook is made from high-grade stainless steel and combined with a UV-resistant polymer lever/grip. Break load: 6170 lbs. Yellow.

	Length	A	B
WIC2454	4-17/32"	23/32"	3/4 x 13/32"



SEADOG LINE

JIB SNAP

Cast manganese bronze - hammer shut style - no sewing necessary.

	Length
136540	1-11/16"
136550	2-1/8"
136560	2-1/2"
136575	3-1/8"



samson**SPLICING KIT
FOR BRAIDED ROPES**

Includes 1/4", 5/16", 3/8", 7/16", 1/2" aluminum fids, small pusher and instructions.

SAM9990070**samson****TRAINING KIT**

For splicing dual braided ropes. Full instructions for making an eye splice. A versatile and useful skill for handling braided rope. Kit includes 1/2" fid, small pusher, instructions and two lengths of 1/2" double braid line.

SAM9990010**samson****SPLICING MANUAL**

This guide has easy to follow instructions complete with illustrations. 30 different splices are covered.

SAM9960060**samson****ALUMINIUM FIDS**

Machined aluminum.

SAM9010160	1/4"	SAM9010400	5/8"
SAM9010200	5/16"	SAM9010480	3/4"
SAM9010240	3/8"	SAM9010560	7/8"
SAM9010280	7/16"	SAM9010640	1"
SAM9010320	1/2"	SAM9130000	Small pusher
SAM9010360	9/16"	SAM9140000	Large pusher

**SEADOG LINE****SPLICING FIDS**

Stainless steel with hardwood handle.

562008 1/8" - 1/2"**562016** 1/2" and up**Keystone****DREW MARLIN SPIKE**

Made of high grade carbon steel carefully forged, hardened and tempered. Fully polished.

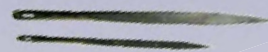
1860	6"
1861	8"
1862	10"
1863	12"
1864	14"
1865MAR	16"

**Osborne****SAIL PALM**

A fine quality rawhide palm with iron thimble, hide bound. Made in both right and left hand models.

265L Left Hand**265R** Right Hand**Osborne****SAIL NEEDLE**

501-2	Curved	509-13	3" length
509-9	4" length	509-14	2-3/4" length
509-10	3-3/4" length	509-15	2-1/2" length
509-11	3-1/2" length	509-16	2-3/8" length
509-12	3-1/4" length	509-17	2-1/4" length

**Osborne****AUTOMATIC AWL**

Ideal for sewing leather, canvas and similar materials. The awl carries a spool of thread on the handle. Hollow handle holds extra curved needle and wrench. Comes with one straight and one curved diamond coated needle.

413OS	Automatic Awl
413RB	Spare thread and reel, black
413RBR	Spare thread and reel, brown
413RW	Spare thread and reel, white

**UNI
CORD****BRAID OVER BRAID POLYESTER (LOW STRETCH)**

An excellent choice for sheets and halyards due to its balanced and round construction, low stretch and high tensile strength. Spliceable. Available with colour identification markers in black, blue, green and red. Sold in 600' reels.

	Diameter	Tensile Strength
UNI38X600YB_ _	3/8"	4245 lbs
UNI12X600YB_ _	1/2"	7500 lbs

Replace _ in part number with colour code to choose tracer colour: Black = BK, Blue = BL, Green = GR, Red = RD, WH = solid white

samson**LS™ AND LST™ YACHT BRAIDS**

Good general purpose, low stretch yacht braids for all applications. Polyester cover/polyester core. **Cover is white with your choice of black, red, green, blue or variegated red and green tracer.**

- Splicing: Class I double braid splice
- Good strength characteristics
- Great flexibility and handling
- Excellent abrasion resistance

Sold in 500' reels.

	Size	Avg strength
450012_05030*	3/16"	1200 lbs
450016_05030	1/4"	1850 lbs
450020_05030	5/16"	2275 lbs
450024_05030	3/8"	3700 lbs
450028_05030	7/16"	4900 lbs
450032_05030	1/2"	7000 lbs
450040005030	5/8"	11000 lbs White only

Replace _ in part number with colour code to choose tracer colour: 2 = Black, 4 = Red, 5 = Green, 8 = Blue, 0 = White with red/green variegated

* Note the 3/16" dia. is not spliceable due to its parallel core construction





XLS™ AND XLS SOLID™

Polyester cover/polyester core.

XLS Yacht braid has less elongation and a heavier cover and lower stretch construction than LS and LST. 2-in-1 double braid construction with a polyester cover and core. XLS has a white cover and is available with red, green, blue tracers and the red/green variegated.

XLS Solid Colour is available with a black, red, green or blue cover, all having a red and green variegated ID tracer.

- Splicing: Class I double braid splice
- Highest strength double braid polyester rope
- Lowest stretch of our polyester double braids
- Outstanding abrasion resistance

Sold in 500' reels

XLS White	XLS Solid	Size	Avg strength
455012_05030*	456012_05030*	3/16"	1200 lbs
455016_05030	456016_05030	1/4"	2200 lbs
455020_05030	456020_05030	5/16"	3300 lbs
455024_05030	456024_05030	3/8"	4400 lbs
455028_05030	456028_05030	7/16"	5800 lbs
455032_05030	456032_05030	1/2"	8300 lbs
455036005030**		9/16"	11000 lbs
455040005030		5/8"	13600 lbs

* Note the 3/16" dia. is not spliceable due to its parallel core construction

** Available in red/green variegated only

Replace _ in part number with colour code to choose tracer colour (XLS White) or cover colour for solid (XLS Solid):

2 = Black, 4 = Red, 5 = Green, 8 = Blue, 0 = White with red/green variegated



XLS™ EXTRA

XLS Extra was created for performance-oriented cruisers and for club racers wanting higher strength and lighter weight than polyester double braids. XLS Extra offers the smooth flexibility of a 24-strand braided polyester cover with a braided core made from a blend of MFP and Dyneema®. **Cover is navy blue with your choice of beige, blue, green or red colour tracers.**

- Splicing: Class II Double Braid Splice
- Excellent wire halyard replacement
- Lighter weight than double-braid
- Low stretch

Sold in 500' reels.

	Size	Avg strength
442016_05030	1/4"	2300 lbs
442020_05030	5/16"	3500 lbs
442024_05030	3/8"	4600 lbs
442028_05030	7/16"	6100 lbs
442032_05030	1/2"	8700 lbs

Replace _ in part number with colour code to choose tracer:
4 = Red, 5 = Green, 8 = Blue, 9 = Beige



Samson

TROPHY™ BRAID

Spun polyester cover/polyester core.

The soft, fuzzy cover makes the line easier to grip and holds well in cam and jam cleats. It also provides a more solid grip on winch drums, especially under wet conditions. Due to its gentle feel, Trophy is often selected for sheets. **Available in blue, green or red cover with a variegated red and green ID tracer.**

- Splicing: Class I double braid splice
- Easy to hold, wet or dry
- Holds well in all types of cleats
- Has a solid grip on winch drums

Sold in 500' reels.

	Size	Avg strength
453012_05030*	3/16"	800 lbs
453016_05030	1/4"	1400 lbs
453020_05030	5/16"	2000 lbs
453024_05030	3/8"	3000 lbs
453028_05030	7/16"	4000 lbs
453032_05030	1/2"	6000 lbs

Replace _ in part number with colour code to choose cover colour:

4 = Red, 5 = Green, 8 = Blue

* Note the 3/16" dia. is not spliceable due to its parallel core construction



Samson

MLX

Designed for the club racer, but also suitable for the performance-oriented cruiser, MLX is a new double braid construction that incorporates a first-of-its-kind core with a polyester cover. The unique core is a blend of a new and exclusive fibre, Innegra™-S, a high modulus polypropylene (HMPP), and Dyneema®, a high modulus polyethylene (HMPE). Innegra™-S is available to the rope industry only through Samson and provides a bridge between the performance characteristics and price tags of traditional synthetic fibers, such as Technora®, Dyneema®, and Vectran®. MLX is a lightweight core-dependent line that has excellent strength and low stretch. The core is Samthane coated to match the colour of the cover, making the line strippable for greater weight savings.

Available in all white, black/white, red/white, green/white or blue/white flecked.

- Low stretch
- High strength
- Lightweight

Sold in 500' reels.

	Size	Avg strength
434012_05030	3/16"	1800lbs
434016_05030	1/4"	3800 lbs
434020_05030	5/16"	4500 lbs
434024_05030	3/8"	7200 lbs
434028_05030	7/16"	9500 lbs
434032_05030	1/2"	15000 lbs

Replace _ in part number with colour code to choose fleck colour:

2 = Black, 4 = Red, 5 = Green, 8 = Blue, 0 = Solid white no fleck



ULTRA-TECH

Ultra-Tech combines high performance with great value. This core-dependent double braid consists of a braided Technora core as the strength member with a 24-strand braided polyester cover. Technora is a high-strength heat-resistant fiber with low stretch. Technora also has better resistance to flex-fatigue than other aramid fibers. Colour-Match™ 24: A clever system for maintaining the colour coding of a line even when the cover has been stripped! Now you can finally strip the covers off your halyards and still easily distinguish one line from another without any special gadgets or hardware because the core is urethane-coated the same colour as the tracer colour in the cover. **The cover is burgundy with your choice of red, green, blue or black tracer colours.**

- Splicing: Class II double braid splice
- Replaces wire halyards
- Works well around sheaves and winches
- For the high performance sailor
- Economical
- No creep

Sold in 500' reels.

	Size	Avg Strength
443012_05030	3/16"	2300 lbs
443016_05030	1/4"	4800 lbs
443020_05030	5/16"	7800 lbs
443024_05030	3/8"	10000 lbs
443028_05030	7/16"	14800 lbs
443032_05030	1/2"	20000 lbs

Replace in part number with colour code to choose tracer colour:
2 = Black, 4 = Red, 5 = Green, 8 = Blue



ULTRA-LITE

Ultra-Lite is great for light wind sheets. This lightweight, floating double braid has a 24-Strand MFP cover and a blended core of MFP and Dyneema®. **Cover is available in black, red, green or blue. Tracer colour is yellow.**

- Splicing: Class II double braid splice
- It floats
- Lightest weight double braid
- Excellent strength
- Very low stretch

Sold in 500' reels.

	Size	Avg Strength
441012_05030*	3/16"	1200 lbs
441016_05030	1/4"	2200 lbs
441020_05030	5/16"	2900 lbs
441024_05030	3/8"	4400 lbs

* Note the 3/16" dia. is not spliceable due to its parallel core construction

Replace in part number with colour code to choose cover colour:
2 = Black, 4 = Red, 5 = Green, 8 = Blue



WARPSPEED

A great strength-weight-stretch profile (high strength, low stretch and very low weight) makes WarpSpeed® the high performance racer's choice for double braid ropes. The strength member in this double braid is 100% Dyneema SK-75 fiber. The cover is flexible 24-strand polyester that provides good handling, excellent performance in stoppers and clutches and enhanced abrasion resistance. The cover can be stripped where desired for greater weight savings.

Colour-Match™ 24: A clever system for maintaining the colour coding of a line even when the cover has been stripped! Now you can finally strip the covers off your halyards and still easily distinguish one line from another without any special gadgets or hardware because the core is urethane-coated the same colour as the tracer colour in the cover.

WarpSpeed is beige with tracers available in black, blue, red and green. WarpSpeed® White has an all-white cover, or is available in white with tracers of blue, red or green.

- Splicing: Class II double braid splice
- Construction: Core-dependent double braid
- Very low stretch
- Lightweight
- Excellent abrasion resistance

Sold in 500' reels.

White cover	Beige cover	Size	Avg strength
544016_05030	444016_05030	1/4"	5100 lbs
544020_05030	444020_05030	5/16"	6200 lbs
544024_05030	444024_05030	3/8"	9800 lbs
544028_05030	444028_05030	7/16"	14000 lbs
544032_05030	444032_05030	1/2"	21000 lbs
544036_05030	444036_05030	9/16"	26500 lbs

Replace in part number with colour code to choose tracer colour:
2 = Black, 4 = Red, 5 = Green, 8 = Blue, 0 = White with white cover



LIGHTNING ROPE

This 12-strand construction blends Vectran® and Dyneema® SK-75 fibers into a reliable, lightweight line with very low stretch and no creep. It's great for use where static loads are anticipated and weight is an issue. **It is available with black, red, green or blue Samthane coatings.**

- Splicing: Class II, 12-strand splice
- High strength-to-weight ratio
- Very low stretch

Sold in 500' reels.

	Size	Avg Strength
379007_05030	7/64"	1400 lbs
379008_05030	1/8"	2100 lbs
379012_05030	3/16"	5400 lbs
379016_05030	1/4"	7900 lbs
379020_05030	5/16"	13500 lbs
379024_05030	3/8"	18500 lbs

Replace in part number with colour code to choose line colour:
2 = Black, 4 = Red, 5 = Green, 8 = Blue



LITESPEED

With a double braid core made of 100% Dyneema® SK-75 and a 24-strand cover braided from MFP, LiteSpeed is the floating version of WarpSpeed. It has similar strength-stretch-weight profile, is extremely strong and durable, yet its MFP cover allows it to float. This line is perfect for light air sheets. **Cover is yellow, black, red or blue with green tracers.**

- Splicing: Class II, double-braid
- High strength-to-weight ratio
- Very low stretch
- Floats

Sold in 500' reels.

	Size	Avg Strength
375016_05030	1/4"	4100 lbs
375020_05030	5/16"	6200 lbs
375024_05030	3/8"	9300 lbs

Replace in part number with colour code to choose cover colour: 2 = Black, 4 = Red, 1 = Yellow, 8 = Blue



VALIDATOR II

A 100% Vectran® core gives Validator II both very high strength and absolutely no creep in static load applications. The 24-strand polyester cover protects the core from abrasion, handles easily, while performing well on winches and in stoppers.

Colour-Match™ 24: A clever system for maintaining the colour coding of a line even when the cover has been stripped. Now you can finally strip the covers off your halyards and still easily distinguish one line from another without any special gadgets or hardware because the core is urethane-coated the same colour as the tracer colour in the cover.

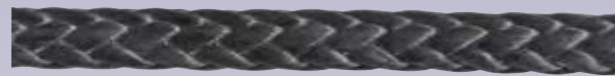
Cover colour is grey with your choice of black, red, green or blue tracers.

- Splicing: Class II, double-braided
- No creep
- Excellent abrasion resistance

Sold in 500' reels.

	Size	Avg Strength
447016_05030	1/4"	5000 lbs
447020_05030	5/16"	7000 lbs
447024_05030	3/8"	11000 lbs
447028_05030	7/16"	15200 lbs
447032_05030	1/2"	20000 lbs

Replace in part number with colour code to choose tracer: 2 = Black, 4 = Red, 5 = Green, 8 = Blue



AMSTEEL

This efficient 12-strand construction of Samthane-coated Dyneema® SK-60 fiber makes AmSteel® an economical alternative to AmSteel-Blue. AmSteel is a non-rotational rope that yields high strength and low stretch; equivalent to wire rope with one-seventh the weight. In addition, the product is flexible, easily spliced and resists flex-fatigue and abrasion.

AmSteel is very slippery and will not hold well around cleats, stoppers and winches. Apply a polyester cover material to the area of the rope where it needs to be winched or cleated, and lock-stitch the cover to the core.

Stock colours are blue and grey; other colours available by special order.

- Splicing: Class II 12-strand
- Easily spliced (much like splicing 12-strand hollow braided ski rope)
- Extremely lightweight
- Floats - will not absorb water
- Wire replacement
- Samthane UV coated
- Extremely low stretch
- Durable - outlasts wire rope
- For the high performance sailor

Sold in 600' reels.

Blue	Grey	Size	Avg Strength	Weight/100'
870016806030	870016706030	1/4"	7400 lbs	1.6 lb
870020806030	870020706030	5/16"	10500 lbs	2.7 lb
870024806030	870024706030	3/8"	15500 lbs	3.6 lb



AMSTEEL-BLUE

A high-performance 12-strand single braid of 100% Dyneema® SK-75 fiber, AmSteel-Blue yields the maximum in strength-to-weight ratio, very low stretch and is stronger than the same sized wire rope constructions - yet it floats. It's the highest strength single braid Samson makes. Samthane coating enhances an already high abrasion and cut resistance. AmSteel is very slippery and will not hold well around cleats, stoppers and winches. Adding a cover is recommended for areas handled by winch or rope clutches. **Blue or grey.**

- Splicing: Class II 12-strand
- UV stabilized
- Stronger than wire
- Same elongation as wire
- Extremely light
- Floats
- Highly abrasion resistant
- Non-rotational
- Very low stretch
- Easily spliced
- Superior wear and flex fatigue
- Similar elastic elongation to wire rope

Sold in 600' reels.

Blue	Grey	Size	Strength	Weight/100'
872007806030		7/64"	1600 lbs	0.3 lbs
872008806030		1/8"	2500 lbs	0.5 lbs
872010806030	872010706030	5/32"	4000 lbs	0.75 lbs
872012806030	872012706030	3/16"	5400 lbs	1.0 lbs
872016806030	872016706030	1/4"	8600 lbs	1.6 lbs
872020806030	872020706030	5/16"	13700 lbs	2.7 lbs
	872024706030	3/8"	19600 lbs	3.6 lbs



MFP BRAIDED FLOAT LINE

Bright Yellow with a Red identification tracer line. 100% Olefin fibres. Highly visible, floats, excellent handling qualities, non-torquing. Non spliceable. Sold in 600' reels

	Dia.	Avg. Strength
6MMFLT	1/4"	1700 lbs.
9MMFLT	3/8"	3200 lbs.
13MMFLT	1/2"	5200 lbs.
16MMFLT	5/8"	7400 lbs.



MFP FLOAT LINE

Yellow with a Red tracer

UNI38X500MFPYL 3/8" x 500'



PORTABLE ROPE CUTTER

Easy finger pull operation. It makes quick clean cuts in all types of synthetic ropes, lines and strapping. Operates on 120V AC power

75-7060 Rope cutter

75-7061 Replacement blades



DIAMOND BRAID MONOFILAMENT POLYPROPYLENE (HOLLOW BRAID)

Perhaps the most practical and inexpensive synthetic rope on the market. Its hollow core is easy to splice. The fiber is treated with UV stabilizers for sunlight durability. 12 strand premium construction. Floats. Sold in 500' reels.

UNI14X500HB_ _

UNI516X500HB_ _

UNI516X1000HBBL/WH

UNI38X500HB_ _

UNI12X500HB_ _

Replace _ in part number with colour code:

Black = BK, Blue/White = BL/WH



Canada Cordage

3 STRAND POLYPROPYLENE JUMBO REELS

Replace _ in part number with colour code where applicable:

Blue = BP, Yellow = YP

	Size	Reel size
316X2125YP	3/16"	2125'
14X1310_	1/4"	1310'
516X975YP	5/16"	975'
38X630YP	3/8"	630'
12X335_	1/2"	335'
34X125YP	3/4"	125'



3 STRAND TWISTED POLYPROPYLENE

Polypropylene is light, it floats and is highly resistant to most chemicals. Very low stretch. Spliceable.

	Colour	Size	Reel size
UNI316X1200YP	Yellow	3/16"	1200
UNI316X1200WP	White	3/16"	1200
UNI14X600YP	Yellow	1/4"	600
UNI14X600WP	White	1/4"	600
UNI516X600YP	Yellow	5/16"	600
UNI516X600WP	White	5/16"	600
UNI38X600YP	Yellow	3/8"	600
UNI38X600WP	White	3/8"	600
UNI12X600YP	Yellow	1/2"	600
UNI12X600WP	White	1/2"	600
UNI58X600YP	Yellow	5/8"	600
UNI58X600WP	White	5/8"	600
UNI34X600YP	Yellow	3/4"	600
UNI34X600WP	White	3/4"	600

Canada Cordage

POLYPROPYLENE

Monofilament polypropylene is the lightest, most widely used, most economical rope on the market. Strength is far greater than Manila. Other characteristics are long life, ease of handling, flexibility in cold temperatures, excellent resistance to most acids and alkalis and very good impact loading. And it floats.

Replace _ in part number with colour code:

Blue = BP, Yellow = YP

	Size	Coil size
14X1200_	1/4"	1200'
516X1200_	5/16"	1200'
12X600_	1/2"	600'
58X600_	5/8"	600'
34X600_	3/4"	600'
1X600_	1"	600'





SOLID BRAID NYLON CORD

This is an excellent general purpose line for recreational and Marine-Industrial use. The choice for flag halyards, life line, sail cover lacing and starter cord. A must for rope lockers. Sold in 1000' reels.

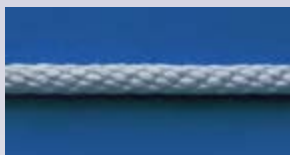
580006010020	3/32"
580008010020	1/8"
580010010020	5/32"
580012010020	3/16"
580014010020	7/32"



SOLID BRAID NYLON

Made from 100% multifilament nylon with a round construction. Non-spliceable. Abrasion and chemical resistant. Available in black or white. Sold in 1000' reels.

UNISC3	White	3/32"
UNISC3BK	Black	3/32"
UNISC4	White	1/8"
UNISC4BK	Black	1/8"
UNISC5	White	5/32"
UNISC5BK	Black	5/32"
UNISC6	White	3/16"
UNISC6BK	Black	3/16"
UNISC7	White	1/4"



SOLID BRAID POLYESTER

As one of the most durable man-made fibers, polyester offers minimal shrinkage and very low stretch. Non-spliceable. Abrasion and chemical resistant. Available in black or white. Sold in 1000' reels.

UNIPC3	White	3/32"
UNIPC3BK	Black	3/32"
UNIPC4	White	1/8"
UNIPC4BK	Black	1/8"
UNIPC5	White	5/32"
UNIPC5BK	Black	5/32"
UNIPC6	White	3/16"
UNIPC6BK	Black	3/16"



MINI BRAID ACCESSORY CORDS™

Strength characteristics for a free running, torque-free cord. Applications include one design, small boat, and dinghy running rigging, lacing bimini tops, trampoline lacing and many other uses. Sold in 300' reels.

	Size	Min. Strength
480020203030	2mm	230 lbs
480030203030	3mm	600 lbs
480040203030	4mm	1000 lbs
480050203030	5mm	1200 lbs



LASH-IT & ZING-IT

Made from Dyneema® fiber, this twine yields the highest strength, lightest weight, lowest stretch and longest wear life available. The proprietary urethane coating Samthane adds to the twine's wear life, ensures the knot-holding capability of the twine, and gives the twine its distinctive gray color

- Convenient packaging
- Extremely light weight
- Samthane UV coating
- Extremely low stretch
- Outlasts wire rope



	Size	Strength	Colour
811017701850	1.75mm(1/16") x 180ft	500 lbs	Grey
811017101850	1.75mm(1/16") x 180ft	500 lbs	Yellow
811017706050	1.75mm(1/16") x 600ft	500 lbs	Grey
811022701850	2.2mm(3/32") x 180ft	650 lbs	Grey
811022101850	2.2mm(3/32") x 180ft	650 lbs	Yellow

#7 WAXED POLYESTER SAILMAKER'S TWINE

100% continuous filament pre-waxed twine, individually wrapped in clear plastic with one #15 sewing needle. For whipping, stitching, repairing canvas and synthetic fabrics. 4 oz.

7PB4	Brown
7PW4	White



#3 WAXED POLYESTER SAILMAKER'S TWINE

100% continuous filament pre-waxed twine, individually wrapped in clear plastic with one #15 sewing needle. 1 oz available only on cards of eight

MBB4	4 oz Brown
MBW4	4 oz White
3MB-C	1 oz Brown, 8/card
3MW-C	1 oz White, 8/card
3MBCO-1	1 oz coloured, 8/card (Black, Blue, Brown, Green, Grey, Orange, Red & Yellow per card)



MANILA ROPE

Made from the finest Philippine natural fibers, lubricated to increase resistance to abrasion and wear, and to retard water absorption which is a major cause of rot and mildew. Manila has less stretch than synthetic ropes.

	Size	Reel size
14X1200MAN	1/4"	600'
38X600MAN	3/8"	600'
12X600MAN	1/2"	600'
58X600MAN	5/8"	600'
34X600MAN	3/4"	600'
1X600MAN	1"	600'



TARRED MARLIN

Heavy tarred marlin. 5 lb roll. Polished 2 ply
TARMARL5





OCEAN RACER™ TILLER EXTENSION

- Infinite lock positions
- Stainless steel TFP quick release universal joint
- White powder-coated anodized aluminum
- Comfortable grip
- Telescopes 31" to 41"

FSP106025 Double-grip with TFP quick release end

FSP106225 Double-grip with Sta-FAST option

StaFAST™ END FITTING (SF)

Patented design holds the tiller extension exactly where you leave it. No more sliding down out of reach (not sold separately).



TFP QUICK RELEASE



Part No.

104004 TFP Assembly Complete With Socket
104006 TFP Socket (receptacle only)



BIG STICK™ TILLER EXTENSIONS

A rugged lightweight shaft of Kevlar™/carbon composite. The shaft provides a solid grip for dinghy and keel boat sailors. The universal polymer end fitting is Forespar's proven "Speed-Lock" design for quick mount/dismount and easy replacement. Units are shipped in kit form. The inboard end is loose for custom lengths to suit your class requirements. Simply cut the tube to length and epoxy the "Speed-Lock" fitting onto the end of the tube. Epoxy kit supplied.

FSP102214 30" long, 7/8" OD Big Stick

FSP102217 48" long, 7/8" OD Big Stick

FSP102223 72" long, 1-1/4" OD Giant Stick



TILLER LOCK BOX - TLB

This inexpensive product turns any boat with a ball grip Forespar® tiller extension into a boat with a simple, effective and adjustable tiller lock. Install one into your cockpit coaming and you have it in minutes! Cut-out dimensions 3-3/8"W x 4-3/4"H x 1-1/2"D.

FSP100000



BALL END & GOLF GRIP SWIVEL STICK

Forespar's economical fixed length tiller extension is now a better value. Featuring removable Speed Lock (SL) polyester elastomer universal end fitting mounted on rugged 5/8" dia. black anodized aluminum tubing with rubber ball end or golf grip style handle. For the small boat (up to 22' maximum) sailor.

FSP102000 18" ball end

FSP102001 24" ball end

FSP102002 30" ball end

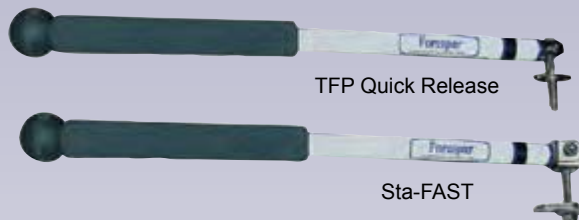
FSP102003 36" ball end

FSP102008 18" golf grip

FSP102004 24" golf grip

FSP102005 30" golf grip

FSP102006 36" golf grip



TWIST-LOCK TILLER EXTENSIONS

The industry standards are set by Forespar®'s complete line of hiking sticks with designs and lengths to satisfy every sailor. Our telescoping models offer a choice of three excellent fastening devices:

TFP (Quick-Release); SF (Sta-Fast™); and SL (Speed-Lock) our new composite universal.

A long time favourite of serious sailors around the world, the **TFP (Quick Release)** model can be instantly fastened to the tiller by simply depressing the plunger and inserting the detent pin into the special tubular fitting supplied.

		Model
FSP104016	19" to 32"	TFP-S
FSP104017	27" to 48"	TFP-M
FSP105110	Fixed 30"	STXE-30
FSP105120	Fixed 36"	STX-36
FSP108100	19" to 32"	SF-S
FSP108101	27" to 48"	SF-M
FSP102117	Replacement Speedlock Universal end fitting	



TILLER TAMER

Like having an extra crew member

- Maintains cruising course
- Retains full cockpit space
- Provides smooth adjustable tension from fully locked to fully free.
- Equally adaptable to outboard and inboard rudder tillers. Does not interfere with automatic steering systems
- Ends the need for lashing of the tiller when boat is moored, in a slip, or on a trailer.

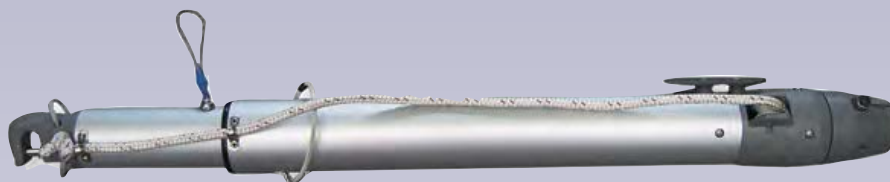
DAV2205





PATENTED LINECONTROL™ WHISKER POLES

LineControl™ is only available on Forespar® whisker poles. The system is simple, and makes the extension and retraction of poles quick and easy. And most amazing of all ... the entire operation can be executed while being positioned at the mast. It is no longer necessary to go forward to adjust buttons of any kind - simply unclasp the line and extend or retract. It's quick and easy even with the largest poles. Topping lifts are available on all whisker poles. Attachment to outer end is with end fittings jaw facing down.



CRANK OUT LINECONTROL™ WHISKER POLES

A standard winch handle locks into a socket to adjust the length of the pole.



	End fittings Inbrd/Outbrd	Recommended mast fittings	Collapsed length/weight	Max. work length	Tubing dia.
FSP401106	EL/UXP	PE-3SC, RC-125, FC-125	121.75"/17 lbs	218.13"	2" & 2-1/2"
FSP401107	EL/UTR	PE-3SC, RC-125, FC-125	121.75"/17 lbs	218.13"	2" & 2-1/2"
FSP402200	UXP/UTR	RC-125, FC-125	148.50"/27 lbs	265.25"	2-1/2" & 3"
FSP402201	UTS/UTR	T-125, AT-125	148.50"/28 lbs	265.25"	2-1/2" & 3"
FSP403200	UXP/UXP	RC-125, FC-125	162.00"/38 lbs	272.00"	3 & 3-1/2"
FSP403202	UTS/UTR	T-125-S	162.00"/39 lbs	272.00"	3 & 3-1/2"
FSP800800	UTS/UTR	T-125, AT-125	162.00"/24 lbs	272.00"	3 & 3-1/2"
FSP405200	UTS/UXP	T-125-S	182.00"/58 lbs	324.00"	3-1/2" x 4"
FSP405201	UTS/UTR	T-125-S	182.00"/58 lbs	324.00"	3-1/2" x 4"
FSP800801	UTS/UTR	T-125, AT-125	182.00"/32 lbs	324.00"	3-1/2" x 4"



Outboard ends

Inboard ends



Outboard ends

Inboard ends



SMALL TELESCOPING POLES (TWIST LOCK)

Telescoping models can be adjusted to any desired length and securely locked in position with an effortless twist of the inner tube. All small poles include strong corrosion-free nylon end fittings and a Mast Pad Eye with stainless steel screws.

FSP404000	Telescoping 4-8' 1" dia. For boat to 16' latch/spike
FSP404100	Telescoping 4-8' 1" dia. For boat to 16' latch/latch
FSP406000	Telescoping 6-12' 1" dia. For boat to 22' latch/spike
FSP406100	Telescoping 6-12' 1" dia. For boat to 22' latch/latch
FSP404011	Pad eye only



HEAVY DUTY TELESCOPING POLES (TWIST LOCK)

These telescoping whisker poles are heavy duty two section and three section aluminum spars which can be extended to lengths up to 15' and securely locked in position by an internal twist lock device. Poles feature self-latching fittings on the inboard and outboard ends. End fittings are hard anodized aluminum alloy for superior strength. (PE-2A Mast Pad Eyes are recommended). Now available with Ultra Series end fittings.

FSP406300	Two sections extending from 79" to 138" 1-7/8" outer tube diameter. With self-latching fittings on both ends / 8 lbs. For boats to 25'
------------------	--



STANDARD SPINNAKER POLES

Standard spinnaker poles have a double bridle topping lift/foreguy system. Unless otherwise specified, all standard poles are supplied with the throat (jaw) facing upward.

Note: Spinnaker poles are custom ordered please call for lead times.

- FSP304001** Two UXP fittings, 9'6" approx., 2" dia.
FSP304002 One UXP, one UTR fitting, 9'6" approx., 2" dia.
FSP304003 Two UTR fittings, 9'6" approx., 2" dia.
FSP304004 Two UXP fittings, 11'6" approx., 2-1/2" dia.
FSP304005 One UTR, one UXP fittings, 11'6" approx., 2-1/2" dia.
FSP304006 Two UTR fittings, 11'6" approx., 2-1/2" dia.
FSP304007 Two UXP fittings, 13'6" approx., 3" dia.
FSP304008 One UTR, one UXP, 13'6" approx., 3" dia.
FSP304009 Two UTR fittings, 13'6" approx., 3" dia.
FSP304010 Two UXP fittings, 15'5" approx., 3-1/2" dia.
FSP304011 One UTR, one UXP fitting, 15'5" approx., 3-1/2" dia.
FSP304012 Two UTR fittings, 15'5" approx., 3-1/2" dia.



MOUNTED POLE CHOCKS

These chocks are moulded from durable, weather resistant urethane. Chocks are sold individually. Two chocks are needed for each pole. For spinnaker or whisker poles. Ideal for reaching struts.

Stanchion Mount - fits 1" stanchions

- FSP300050** For 2" dia. pole
FSP300042 For 2-1/2" dia. pole
FSP300043 For 3" dia. pole
FSP300044 For 3-1/2" dia. pole

Mast Mount - curved base

- FSP300070** For 2" dia. pole
FSP300071 For 2-1/2" dia. pole
FSP300072 For 3" dia. pole



DECK CHOCKS

Used to stow spinnaker poles or whisker poles on the deck. Models 300028 and 300029 are constructed of high quality stainless steel. They have been designed for rugged use with aluminum as well as our "Ultra" Series end fittings, while also offering an almost 'snag-proof' profile on deck.

- FSP300002** For XP, TR or EL end, marelon
FSP300028 For TS "socket end" stainless steel
FSP300029 For "Grand Prix end" for XP, TR, GPS or GP ends stainless steel



PE-3SF & PE-3SC PAD-EYES

To compliment the medium size whisker poles, Forespar® designed the stainless steel PE-3SF & PE-3SC mast pad eyes. Measuring 2-3/4" x 2", both pad-eyes have inside ring diameters of 1-5/8".

- FSP400001** PE-3SF pad eye, s/s flat base
FSP400002 PE-3SC pad eye, s/s curved base
FSP400012 PE-3SF w/gusset s/s flat base

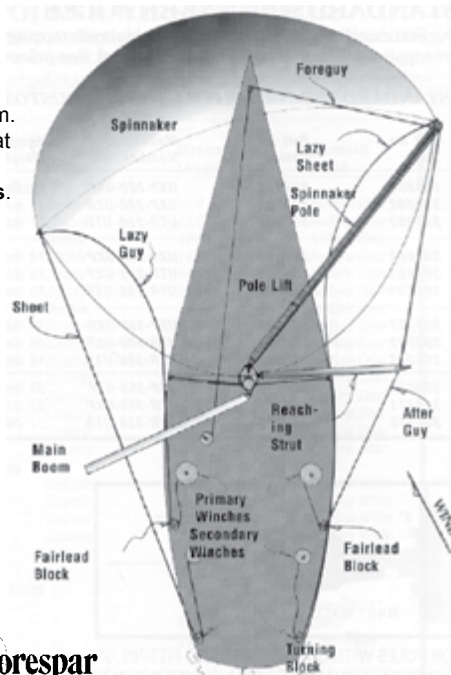


AUTOMATIC SOCKET END

This unique "socket" type fitting automatically locks onto the mast toggle pin with a quick and easy push.

The release is just as quick with a press of the lever. TS & UTS.

Pole model no.	Pole dia.	Fits tube I.D.	Weight w/o trip
FSP309028	TS-300-EF	3.0"	2.835"
FSP304080	UTS-300-ULTRA	3.0"	2.835"
FSP309031	TS-350-EF	3.5"	3.260"
FSP304081	UTS-350-ULTRA	3.5"	3.260"
FSP405006	TS-400-EF	4.0"	3.750"
FSP309036	TS-450-EF	4.5"	4.260"
FSP304082	UTS-400-ULTRA	4.0"	3.750"
FSP304083	UTS-450-ULTRA	4.5"	4.260"



DETERMINING POLE LENGTH:

The length of your spinnaker pole is determined by your yacht's "J" measurement. This is roughly the straight line distance from the front of the mast at deck level to the headstay. The "J" measurement is available from your sailplan.



TS Style



ULTRA SERIES POLE END FITTINGS

Designed for high strength, very low weight and resistance to wear and corrosion; the Ultra Series composite end fitting is perfect for aluminum or carbon fibre spinnaker poles and whisker poles. The Ultra Series is the sailor's choice for inshore and offshore racing and cruising. Available with or without triggers. Maximum recommended boat LOA is 43'.



UXP external trip



UTR internal trip

	For pole Model no.	Fits Dia.	Tube I.D.	End Fitting Length	End Fitting Weight
FSP304054	UXP-150-EF	1.5"	1.370"	2.750"	6.97 oz
FSP304050	UXP-200-EF	2.0"	1.870"	2.750"	6.97 oz
FSP304060	UTR-200-EF	2.0"	1.870"	2.750"	6.97 oz
FSP304051	UXP-250-EF	2.5"	2.334"	3.125"	9.25 oz
FSP304061	UTR-250-EF	2.5"	2.334"	3.125"	9.25 oz
FSP304052	UXP-300-EF	3.0"	2.835"	3.000"	11.92 oz
FSP304062	UTR-300-EF	3.0"	2.835"	3.000"	11.92 oz
FSP304053	UXP-350-EF	3.5"	3.260"	3.625"	15.72 o
FSP304063	UTR-350-EF	3.5"	3.260"	3.625"	15.72 oz



Forespar

YACHT ROD

The high performance spring loaded mechanical boom vang. Excellent vang/boom support for performance cruising and racing. White powder coated aluminum & polished stainless steel. Supplied with spectra cable ready to add to your tackle system. Your 4:1 equals 8:1 when installed on Yacht Rod. Spring return holds boom. Brackets for mast and boom sold separately.

- Eliminates need for boom topping lift
- Supports boom in light air and when reefing and lowering the mainsail
- Faster than hydraulics - no messy hydraulics to leak
- More efficient than conventional tackles
- Precipitation hardened stainless steel spring with fast-pin adjustment - rated for over 1 million compressions.

	FSP352000	FSP352100	FSP352101
Stroke	7"	11-1/2"	11-1/2"
Pin to Pin (min)	58-1/2"	66-1/2"	79-1/2"
Pin to Pin (max)	70-1/2"	80"	93"
Max return force	600lbs	1450 lbs	1450lbs
FSP352000	YR for boats 34-40'		
FSP352100	YR for boats 41-45'		
FSP352101	YR for boats 46-55'		
FSP352003	Boom fitting for YR-M		
FSP352103	Boom fitting for YR-L & YR-XL		
FSP352005	Mast fitting for YR-M		
FSP352104	Mast fitting for YR-L & YR-XL		



Forespar

SHACKLE GUARDS

Place a protective buffer between the spinnaker pole ends and your after-guy shackle. Made of high-strength polyurethane, these tough polymer guards are UV inhibited for long life. Shackle Guards can also be used on lifelines to skirt genoas.

FSP300006	SG-1 White	2-1/4" Dia x 3/8" ID
FSP300007	SG-2 White	2-1/4" Dia x 1/2" ID
FSP300008	SG-3 White	3" Dia x 1/2" ID
FSP300009	SG-4 White	3" Dia x 5/8" ID
FSP300086	SG-2 Red	2-1/4" Dia x 1/2" ID
FSP300091	SG-2 Green	2-1/4" Dia x 1/2" ID



Forespar

SAIL SAVER JIB ROLLER

Sold in pairs, these light weight, easily installed rollers can be used on the spreader tips or life lines to help skirt the foot of the jib. Sail Savers can also be used on backstays of catamarans or other boats with large roached mainsails. Centre hole is 3/16" and can be drilled out to 3/8" maximum. 2-3/4" dia.

FSP210020



Forespar

RING STYLE MAST CAR - RC125

Car is investment cast of 17-4 heat treated stainless steel to provide a superior product. Compatible with our "UXP" and "UTR" pole end fittings. Ring I.D. is 1.625". For 1.250" T-track and has a screw lock-pin, our special UHMW polyethylene slides inserts and provisions for up and down shackles.

(Does not fit Lewmar T-track)

FSP331000



Forespar

HEAVY DUTY CAR - FC-125

Allows both vertical and horizontal movement while eliminating undesirable twisting motion of the spinnaker pole. The car slide is high strength, hard anodized aluminum alloy. The pole acceptance jaw is stainless steel. Fits 1-1/4" T-track. Recommended for "UTR" and "UXP" type spinnaker pole ends.

(Does not fit Lewmar T-track)

FSP332002



Forespar

VERTICAL POLE STORAGE CAR VPC-125

Retains the upper end of the stowed pole on the mast centerline. The chock slides on the track and eliminates rattle. Fits 1-1/4" track.

FSP335100	For 2.5" poles
FSP335101	For 3" poles
FSP335102	For 3.5" poles



Forespar

MAST MOUNTED CHOCKS

Molded from durable high tech urethane, these chocks allow for stowing the pole vertically against the face of the mast. Two MPC chocks 2-3 feet apart will help stop the pole from rattling. Curved base

FSP300071	For 2.5" poles
FSP300072	For 3" poles
FSP300073	For 3.5" poles

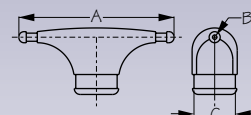


SEADOG LINE

SPREADER BOOTS

These UV stabilized rubber spreader boots will protect your sails from chafe damage.

	A	Wire size B	C
560103	4-5/8"	1/8"	1"
560105	5-3/4"	3/16"	1-3/8"
560106	7-1/2"	1/4"	2-1/8"



LIFESAFE**RIP STOP SAIL REPAIR TAPE**

For emergency use on sails. Provides on the spot repairs. Adheres instantly on contact. Conforms to the shape of the sail. Prevents against sail chafe. 2" x 15"

- RE1140** White
RE1141 Black
RE1142 Red
RE1143 Blue
RE1144 Green
RE1145 Gray

**PSP****SPINNAKER REPAIR TAPE**

This self adhesive ripstop nylon tape is ideal for reinforcing batten pockets and carrying out temporary repairs to torn sails. 2" x 15"

- PSP100FY** Fluorescent yellow
PSP100OR Orange
PSP100RD Red
PSP100WH White
PSP100DKGN Green
PSP100BK Black
PSP100LTBL Light Blue

**PSP****HEAVY DUTY SAIL REPAIR TAPE**

- PSP200-100** 4" x 6'

**PSP****MYLAR REPAIR TAPE**

Remove the white release liner to expose a transparent repair tape for semi-permanent repairs to sail windows and mylar sails. UV and salt water resistant. Available in clear only.

- PSP300-50** 2" x 10' 25 micron
PSP300-150 6" x 10' 50 micron

**LIFESAFE****KEVLAR TAPE SAIL REPAIR**

Self-adhesive, Kevlar scrim, encapsulated in Mylar film. Ideal for repairs to Kevlar and high-performance sails. Excellent resistance to tearing in any direction. Super aggressive UV adhesive for long lasting repairs.

- RE1164** 3" x 4.92'

**LIFESAFE****SAIL PATCH REPAIR TAPE**

Excellent resistance to tearing in any direction, very aggressive adhesive, works on damp sails. Transparent colour suitable for any sail. Tape is lightweight and flexible. 3" x 15'

- RE3843**
ST6017 Shelf talker 8 rolls

**LIFESAFE****SCRIMTAC EMERGENCY SAIL REPAIR TAPE**

For quick strong emergency repairs.

- RE1183** 3" x 15'
RE1185 6" x 15'

**PSP****SELF AMALGAMATING RIGGING TAPE**

A non-adhesive tape with a protective release liner which bonds to itself and not your fittings. Ideal for rigging screws, terminals, on-deck electrics and emergency hose repairs.

- PSP600-1910WH** 3/4" x 32' White
PSP600-2510WH 1" x 32' White

**LIFESAFE****RIGGING TAPE**

Rigging Tape protects against chafing and sharp edges while providing extraordinary safety for sails, lines and rope ends.

- RE3866** Black, 1" x 15', Self amalgamating
RE3867 White, 1" x 15' Self amalgamating
RE6450 White, 1" x 66' Adhesive

**PSP****SPREADER TAPE**

This soft, waterproof spreader tape is ideal for capping crosstree ends to reduce chafing of sails. 1"x33'

- PSP400WH** White
PSP400BK Black

**LIFESAFE****MASTBOOT**

Installing Mastboot does not require un-stepping the mast. It bonds itself into a solid piece of rubber offering protection against moisture. It conforms to irregular surfaces and leaves no sticky residue.

- RE3940** 4"W x 40"L
RE3941 4"W x 100"L

**PSP****MAST COLLAR TAPE**

A self bonding waterproof collar which does not require un-stepping the mast when fitting. 4"x5' White.

- PSP500WH**



DAVIS**WINDEX****WINDEX 10 SPORT**

The Windex 10 is designed for simple accurate operation. It is designed for masthead mounting in most dinghies, smaller boats and sport boats.

DAV3120**DAV3101** Spare Vane**DAVIS****WINDEX****WINDEX 15**

Sapphire suspension bearing, 15" vane (38cm) and adjustable tacking arms with tabs. Vane and tabs feature reflectors for high visibility day and night. Stands 12.75" (32cm) tall.

DAV3150**DAV3151** Spare Vane**DAVIS****WINDEX****WINDEX AV**

The Windex AV allows the Windex 15" wind vane to be mounted onto a standard size of VHF or AM/FM whip antenna. Reduces weight and windage aloft by combining two installations into one. Complete with Windex 15" and all components necessary for quick and easy installation. (Antenna not included.)

DAV3160**DAV3161** Spare vane**DAVIS****SPAR-FLY**

Combines needle bearing balance, high impact plastic, and marine grade metals for unsurpassed sensitivity and durability. Spoiler holes in the vane reduce lift and increase accuracy. Comes equipped with both the top mount fitting and the quick-release side mount.

DAV1310**DAV1311** Spare vane**DAVIS****DELUXE UNIVERSAL MASTHEAD MOUNT**

Extends Windex 10 and 15 away from masthead obstructions. Length 13".

DAV1705**DAVIS****WINDEX LIGHT**

For viewing Windex Indicators at night. Waterproof and non-corroding silver parts give long-life light at just 120ma current draw. Fits under Windex 15, Windex 10 or J base mounting socket. Uses 1467 bulb.

DAV3200**DAVIS****TELO-CAT**

Designed for catamarans. Comes with 8" vane, adjustable tacking arms and mounting hardware.

DAV1450**DAV1451** Hobie 18 adapter**DAV1452** Spare vane**DAVIS****BLACK MAX WIND INDICATOR**

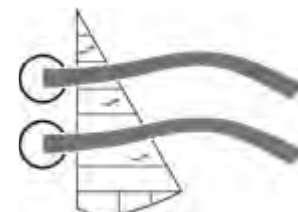
A versatile wind indicator that attaches quickly to masts and booms on most dinghies. Adjusts to fit 1-1/2" to 2-1/2" masts or booms.

DAV1295**DAVIS****WIND-TELS**

Port and starboard colored tales mount on any shroud sizes up to 3/8" (10mm). Made of stainless steel and marine grade metal parts. 2 per package

DAV1260**DAVIS****AIR-FLOW TELS**

The Air-Flow Tels are made out of rip stop nylon and easily attach to sails. No holes required. Tels show the air flow across the sail. They allow you to trim sails for maximum performance. Full instructions included. Red and green. 14 per package.

DAV0950**DAVIS****NEWPORT TELL-TALE**

A practical sailing aid which gives excellent service in light or heavy winds. Easily attaches without tools. Each package contains two stays with full instructions and two replacement tails.

DAV0221 Fits 1/8" wire**DAV0222** Fits 3/16" wire**DAV0223** Fits 1/4" wire**RITCHIE CLINOMETER**

Black ABS plastic. Reads 0-45°.

INC-45

NAVTEC®

The Rigging Solution of Lewmar Marine

Fiber Systems | Rod Systems | Wire Systems | Hardware | Hydraulics



NAVTEC®

WIRE SWAGE TERMINALS

Navtec swage terminals are crafted from premium 316 stainless steel for maximum corrosion resistance and are used to terminate 1 x 19 stainless steel wire, flexible wire rope, and Dyform wire. Available in many sizes.

Series

- N546** Swage Eye - traditional wire end terminal
- N551** Swage Toggle Fork - traditional toggle end terminal
- N555** Swage Stud - with UNF threads
- N741** Swage T - traditional T terminal
- N743** T Rings - enable fibre rope to connect to spars through a T terminal backing plate
- N639** Stemball Eye - used as a toggle in some headstay and backstay applications
- N640** Stemball Cup - used with N641 Stemballs to increase head diameter
- N673** Swage-Toggle - open body swage and toggle with chrome bronze body
- N674** Blank-Toggle - open body blank and toggle with chrome bronze body
- N841** Swage shroud terminal
- N641** Swage stemball



PLEASE CONTACT OUR SALES DEPARTMENT FOR FURTHER INFORMATION

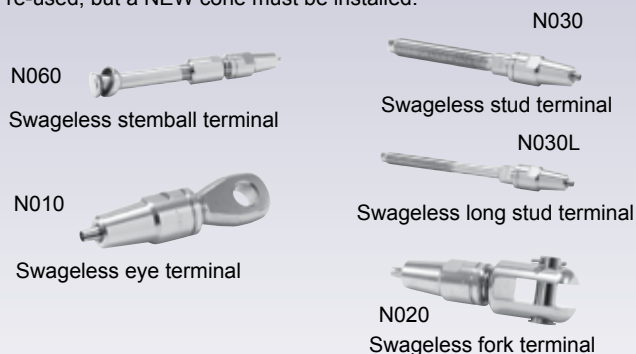
NAVTEC®

Rigging SolutionsSM

NAVTEC®

NORSEMAN SWAGELESS TERMINALS

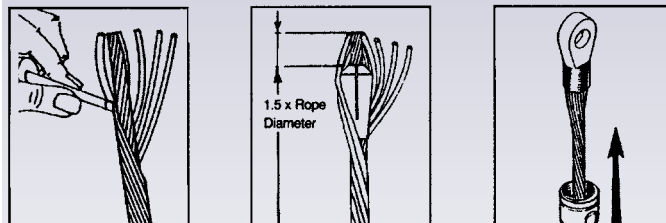
Norseman terminals' strength is in their ability to provide a fast, secure rigging solution. They offer a strong end fitting on all types of wire and have earned an international reputation for quality, efficiency, versatility, reliability and safety at sea. Ease of use in the field allows for owner-installation both at the dock and underway for emergency repairs. The only choice in the harsh tropical conditions that rapidly degrade swaged fittings. Norseman terminals can be re-used, but a NEW cone must be installed.



NAVTEC®

SWAGELESS FITTING METHOD

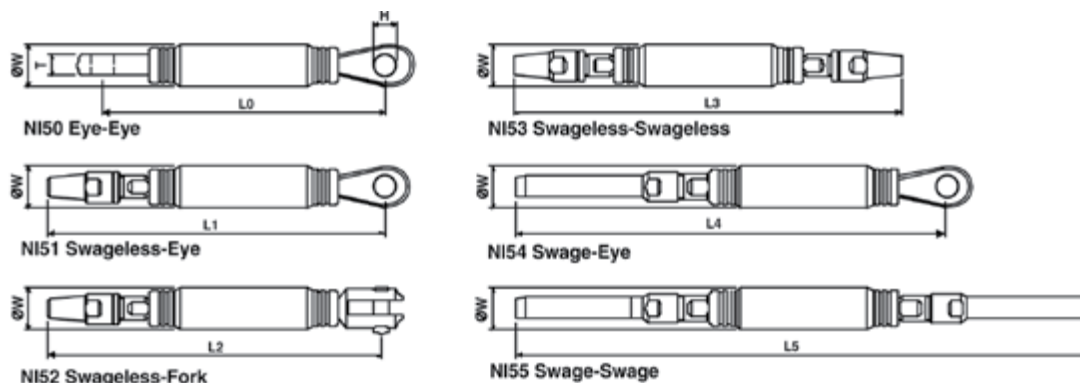
No special tools required. Slip the body of the terminal over the diameter of the cable. Unlay outer wires and fit the cone over the centre core. Re-lay the outer wires into the head of the fitting. Draw the body up to the head and screw together. Swageless terminal also available in T and shroud terminals. Swageless fittings and cones available for 1X19, 7 strand and Dyform wire.



NAVTEC®

NORSEMAN AERIAL RIGGING INSULATORS

For converting high tensile yacht rigging into antennae for transmissions and reception, Norseman Insulators provide a completely secure method of converting yacht backstays into aeriels. They have been approved by Lloyd's for many years and the Norseman Insulator is recommended by leading marine electronic distributors. Insulators are manufactured from marine stainless steel to specification: 316 stainless steel for the end fittings, an approved insulant, and anodised high strength aluminum. Fully tested in an approved environmental laboratory, electrical performance was found satisfactory after exposure to salt spray and to 95% relative humidity at 35°C for four periods of seven days.



WIRE SIZE		L0		L1		L2		L3		L4		L5		OW		H		T	
mm	in	mm	in	mm	in	mm	in	mm	in	mm	in	mm	in	mm	in	mm	in	mm	in
5	3/16	152	5.984	178	7.01	190	7.48	211	8.31	220	8.66	290	11.42	29	1.14	10	0.38	8	0.31
		152	5.984	178	7.01	190	7.48	211	8.31	220	8.66	290	11.42	29	1.14	10	0.38	8	0.31
6	7/32	165	6.496	178	7.01	190	7.48	211	8.31	220	8.66	290	11.42	29	1.14	11	0.44	10	0.37
		165	6.496	198	7.80	203	7.99	229	9.02	238	9.37	315	12.40	29	1.14	11	0.44	10	0.37
7	1/4	165	6.496	198	7.80	203	7.99	229	9.02	238	9.37	315	12.40	29	1.14	11	0.44	10	0.37
		185	7.283	216	8.50	222	8.75	241	9.49	271	10.67	360	14.17	35	1.37	13	0.51	11	0.43
8	5/16	191	7.520	229	9.02	254	10.00	262	10.32	283	11.14	376	14.80	35	1.37	16	0.63	13	0.49
		365	14.370	308	12.13	346	13.63	308	12.13	402	15.83	510	20.08	44	1.73	16	0.63	17	0.65
10		365	14.370	308	12.13	346	13.63	308	12.13	402	15.83	510	20.08	44	1.73	16	0.63	17	0.65
		277	10.906	341	13.43	362	14.25	401	15.79	443	17.44	598	23.54	44	1.73	19	0.76	18	0.71
11	7/16	277	10.906	341	13.43	362	14.25	401	15.79	443	17.44	598	23.54	44	1.73	19	0.76	18	0.71
		277	10.906	341	13.43	362	14.25	401	15.79	443	17.44	598	23.54	44	1.73	19	0.76	18	0.71
12		277	10.906	341	13.43	362	14.25	401	15.79	443	17.44	598	23.54	44	1.73	19	0.76	18	0.71
		277	10.906	341	13.43	362	14.25	401	15.79	443	17.44	598	23.54	44	1.73	19	0.76	18	0.71
14	1/2	277	10.906	341	13.43	362	14.25	401	15.79	443	17.44	598	23.54	44	1.73	19	0.76	18	0.71
		381	15.000	473	18.62	465	18.31	514	20.24	607	23.90	820	32.28	63	2.50	23	0.89	21	0.83
16	5/8	406	15.984	479	18.86	499	19.65	552	21.73	638	25.12	844	33.23	63	2.50	26	1.01	24	0.94
		487	19.173	549	21.61	563	22.17	610	24.02	753	29.65	999	39.33	63	2.50	29	1.14	26	1.01

PLEASE CONTACT OUR SALES DEPARTMENT FOR FURTHER INFORMATION

NAVTEC®

Rigging SolutionsSM

NAVTEC® THE INTEGRAL BACKSTAY ADJUSTER

Ergonomics meets economics. The new Series 8 Integral Backstay Adjuster incorporates several key design improvements. The pressure gauge is positioned prominently, enabling fast, accurate reading of tension values. A longer pump handle produces faster pumping motion and more tension per stroke, which delivers greater performance out of modern masts. The feed tube is seated into the contour of the cylinder, resulting in a more secure design and integrated look, and its cost has remained highly competitive.

In testing, the Navtec Series 8 Integral enabled sailors to increase rigging tension quickly, precisely and easily. With each stroke of the handle, rake increased along with forestay tension, resulting in improved roller furling gear performance, sail shape, windward performance and speed. Use of the specifically designed Integral toggle is strongly recommended.

PART NUMBER	MAX PULL FORCE @ RELIEF		LENGTH CLOSED		LENGTH OPEN		WEIGHT		MAX WIRE SIZE	
	lbs	kg	in	mm	in	mm	lbs	kg	in	mm
A370-BLE-006	3,500	1,590	31.1	790	44.6	1133	7.0	3.18	7/32	5.6
A370-BLE-010	5,400	2,450	31.1	791	44.6	1134	7.3	3.31	9/32	7.1
A370-BLE-012	6,500	2,950	33.5	850	47.8	1213	12.2	5.53	5/16	7.9
A370-BLE-017	8,700	3,950	33.5	850	47.8	1213	12.2	5.53	3/8	9.5
A370-BLE-022	11,100	5,030	35.5	902	50.5	1283	15.5	7.03	7/16	11.1

PART NUMBER	PISTON ROD DIAMETER		CLEVIS PIN & GAP	
	in	mm	in	mm
A370-BLE-006	9/16	14	7/16	11.1
A370-BLE-010	9/16	14	1/2	12.7
A370-BLE-012	5/8	16	5/8	15.9
A370-BLE-017	5/8	16	5/8	15.9
A370-BLE-022	3/4	19	3/4	19.1

Backstay Toggle

PART NUMBER**	LENGTH PIN-PIN	
	in	mm
A371-20A06	2.00	50.8
A371-20A10	2.00	50.8
A371-20A17A	2.33	59.2
A371-20A22	2.98	75.7

The A370 is supplied as standard with a black finish. To order a clear finish, please replace the -BLE in the part number with -CLE.

Integral Backstay Adjuster assembly includes handle, clevis pins and bushings (-6).

* Max relief setting is 4,000 psi, except for -6 and -12, which are 3,000 psi.

** -12 & -17 Cylinders use the A371-20A17A toggle.



BACKSTAY ADJUSTERS

Backstay adjusters allow optimization rigging and sail performance. Models with handles are comfortable to operate and allow greater on board access. For small units, the wheel model offers an outstanding quality-price ratio.

	Length Pin to pin Open / Closed	Pin Dia (Inch)	Funct lbs	Wire size	AdjustmentType: Wheel/ Ratchet/ Handle
WIC5526	13-3/4" / 20-1/2"	1/2"	6173	1/4"-9/32"-5/16"	WHEEL
WIC5536	13-3/4" / 20-1/2"	1/2"	6173	1/4"-9/32"-5/16"	HANDLE
WIC5565	17-5/16" / 26"	1/2"	7055	1/4"-9/32"-5/16"	RATCHET
WIC5568	19-7/8" / 29-3/4"	5/8"	12346	5/16"-3/8"	RATCHET



Wheel Handle Ratchet

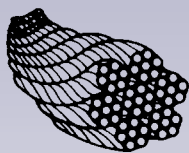


BABYSTAY ADJUSTERS

For fitting a jib, setting up a genoa or a solent jib, and so forth. Both for safety and performance reasons, fitting a removable forestay is strongly recommended when there is a roller furling system. Wichard offers a whole range of BabyStay adjusters.

	Length Pin to pin Open / Closed	Pin Dia (Inch)	Funct lbs	Wire size	AdjustmentType:
WIC5546	9-13/16" / 12-3/4"	1/2"	6173	1/4"-9/32"-5/16"	WHEEL
WIC5554	12-13/16" / 17-3/4"	5/16"	2116	3/16"	HANDLE
WIC5556	17-3/4" / 20"	1/2"	6173	1/4"-9/32"-5/16"	HANDLE
WIC5566	14-9/16" / 21-1/4"	1/2"	6173	1/4"-9/32"-5/16"	HANDLE
WIC5585	14-5/32" / 20-15/52"	5/8"	7055	5/16"-3/8"	RATCHET

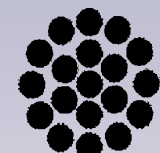




Vanguard

GALVANIZED WIRE ROPE

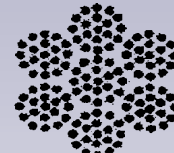
Sold by the foot.



1x19 construction



7x7 construction



7x19 construction

	Size	Const.	Nominal breaking strength
7X19X18GALV	1/8"	7x19	2000 lbs
7X19X532GALV	5/32"	7x19	2800 lbs
7X19X316GALV	3/16"	7x19	4200 lbs

Vanguard

STAINLESS STEEL WIRE ROPE

Type 302/304. Sold by the foot.

	Size	Const.	Nominal breaking strength
7X19X332	3/32"	7x19	1050 lbs
7X19X18	1/8"	7x19	1760 lbs
7X19X532	5/32"	7x19	2400 lbs
7X19X316	3/16"	7x19	3700 lbs
7X19X14	1/4"	7x19	6400 lbs

NICOPRESS SLEEVES

Plain copper oval sleeves for eye splices.

NICO116	1/16"
NICO332	3/32"
NICO18	1/8"
NICO532	5/32"
NICO316	3/16"
NICO732	7/32"
NICO14	1/4"
NICO516	5/16"



SEADOG LINE

WIRE ROPE CLIP

Investment cast 316 stainless steel body. AISI 304 stainless U-bolt.

	Wire size
159502	3/32"
159503	1/8"
159504	5/32"
159505	3/16"
159506	1/4"
159508	5/16"
159510	3/8"
159512	1/2"
159514	9/16"



COOPER Hand Tools

CABLE CUTTERS

For cutting wire rope up to 3/16".

0690TN

COOPER Hand Tools

MULTI SWAGING TOOL

For crimping 1/16", 3/32", 1/8", 5/32", 3/16".

767-9036

DAVIS

SNAP-ON CABLE COVERS

Extruded Polyethylene. 6' long.

DAV0251	3/32"
DAV0252	1/8"
DAV0253	5/32"
DAV0254	3/16"
DAV0255	1/4"
DAV0256	5/16"
DAV0257	3/8"

**WIRE ROPE CLIP**

Malleable wire rope clips

	Wire size
159103	1/8"
WRC316	3/16"
WRC14	1/4"
WRC516	5/16"
WRC38	3/8"
WRC716	7/16"
WRC12	1/2"
WRC58	5/8"
WRC34	3/4"
WRC78	7/8"
WRC1	1"



Crosby

WIRE ROPE CLIP

Manufactured to rigid specifications, these wire rope clips are hot dipped galvanized. Forged base with high wings holds ropes snugly in place, one over the other. Only Crosby clips have a Red U-Bolt® for instant recognition.



	Wire size
G450-1/8	1/8"
G450-3/16	3/16"
G450-1/4	1/4"
G450-5/16	5/16"
G450-3/8	3/8"
G450-7/16	7/16"
G450-1/2	1/2"
G450-5/8	5/8"
G450-3/4	3/4"
G450-7/8	7/8"
G450-1	1"


SEADOGLINE

JAW & JAW TURNBUCKLE

Machined AISI 316 stainless steel and features an electropolished bright finish. All thread sizes and wire rope sizes now conform to US standards and are interchangeable with most other US manufacturers. Note: 185105 has 5mm metric threads.

	A	B	C	D	E	F	Breaking Strength
185105	5mm	7-1/16"	5-15/16"	3-1/8"	1/4"	3/16"	1980 lbs
185106	1/4"-28	8-1/4"	5-15/16"	3-9/16"	3/8"	1/4"	2860 lbs
185108	5/16"-24	9-7/8"	6-7/8"	4-5/16"	7/16"	5/16"	5500 lbs
185110	3/8"-24	11"	7-7/8"	4-3/4"	1/2"	3/8"	7700 lbs
185112	1/2"-20	14-9/16"	9-5/8"	5-15/16"	9/16"	1/2"	11880 lbs
185116	5/8"-18	17-1/8"	12-3/16"	7-1/2"	7/8"	9/16"	17600 lbs
185120	3/4"-16	21-1/2"	15-3/4"	8-11/16"	1"	3/4"	28600 lbs

GALVANIZED JAW & JAW OPEN TURNBUCKLES

	Dia.	Open	Closed
TBKL14	1/4"	10-3/4"	7-1/4"
TBKL516	5/16"	13"	9"
TBKL38	3/8"	16"	10-1/2"
TBKL12	1/2"	17-1/2"	12"
TBKL58	5/8"	25"	16-1/2"
TBKL34	3/4"	32"	21"
TBKL78	7/8"	33"	21"


PAULIN

TURNBUCKLES, HOOK-EYE

5198-301	3/16" x 5-1/2"	5-pack
5198-303	1/4-20" x 7-1/2"	5-pack
5198-304	5/16-18" x 9"	5-pack
5198-306	3/8-16" x 1-1/2"	1-pack

PAULIN

TURNBUCKLES, EYE-EYE

5198-310	3/16" x 5-1/2"	1-pack
5198-313	1/4-20" x 7-1/2"	1-pack


Grosby

TURNBUCKLES

Hot dipped galvanized forged steel, all end fittings Quenched and Tempered, bodies heat treated by normalizing. Outstanding design features include elongated turnbuckle eyes. Shackles one size smaller than turnbuckles can be reeved through turnbuckle eye.

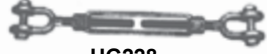
Example part number: **HG226-14X4**.

Diameter and take up inches **Length with Ends in closed Position**

1/4X4"	8-1/4"
5/16X4-1/2"	9-9/16"
3/8X6"	11-7/8"
1/2X6"	13-5/16"
5/8X9"	18-1/2"


HG225-

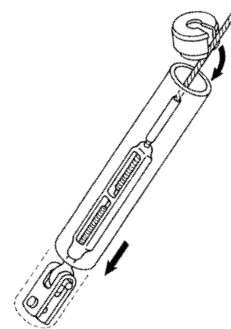
HG226-

HG227-

HG228-
DAVIS

TURNBUCKLE BOOTS

Extruded PVC. With caps.

DAV0241	3/4" ID x 13"
DAV0242	1-1/8" ID x 17"
DAV0243	1-1/2" ID x 20"
DAV0244	1-3/4" ID x 24"
DAV0245	3/4" replacement cap
DAV0246	1-1/8" replacement cap
DAV0247	1-1/2" replacement cap
DAV0248	1-3/4" replacement cap


SEADOGLINE

EXIT PLATE

Used to guide rigging from out of a mast or spar or from below deck and allow exterior adjustment of the rigging.

	Rope	Length	Width	
081010	1/2"	1-1/4"	3-1/4"	Curved
081011	1/2"	1-1/4"	3-1/4"	Straight
081013	3/4"	2"	4-5/8"	Curved
081012	3/4"	2"	4-5/8"	Straight


DAVIS

SAIL TRACK STOPS

When it's time to lower your sail you can rely on Davis' Round and Flat Sail Track Stops to hold your sail and its slides in place on the mast and boom. Large knurled wheels are released with ease. Made of heavy duty, black anodized aluminum and marine grade nickel plated brass. Flat stops come with lanyard holes.



DAV2350	Round .50" dia. x .875"
DAV2351	Flat .42 x 1 x .125"
DAV2352	Flat .75 x 1 x .125"

SEADOGLINE

LASHING HOOK

Formed AISI 304 Stainless

195210	5/16"
195220	3/8"


SEADOGLINE

MAIN SAIL HOOK

Formed AISI 304 Stainless

195410	5/16"
195420	3/8"


SEADOGLINE

CUNNINGHAM HOOK

Formed AISI 304 Stainless

195110	1/4"
195120	5/16"


SEADOGLINE

REEFING HOOK

Formed AISI 304 Stainless

195310	5/16"
195320	3/8"

