



THE LEADER IN ALL-TERRAIN INNOVATION

2500 lb / 3500 lb / 4500 lb

ATV / UTV WINCH KIT

P/N'S: 25-9250, 25-9350, 25-9355, 25-9450

OWNER'S / OPERATING INSTRUCTIONS / SPARE PARTS

Application

WINCH MOUNT NO. 25-XXXX, OEM VEHICLE WINCH MOUNTS

Before you begin, please read these instructions and check to be sure all parts and tools are accounted for. The following instructions contain details required to operate, install and service the contents of this kit. Save these instructions. Important safety instructions are included in this manual.

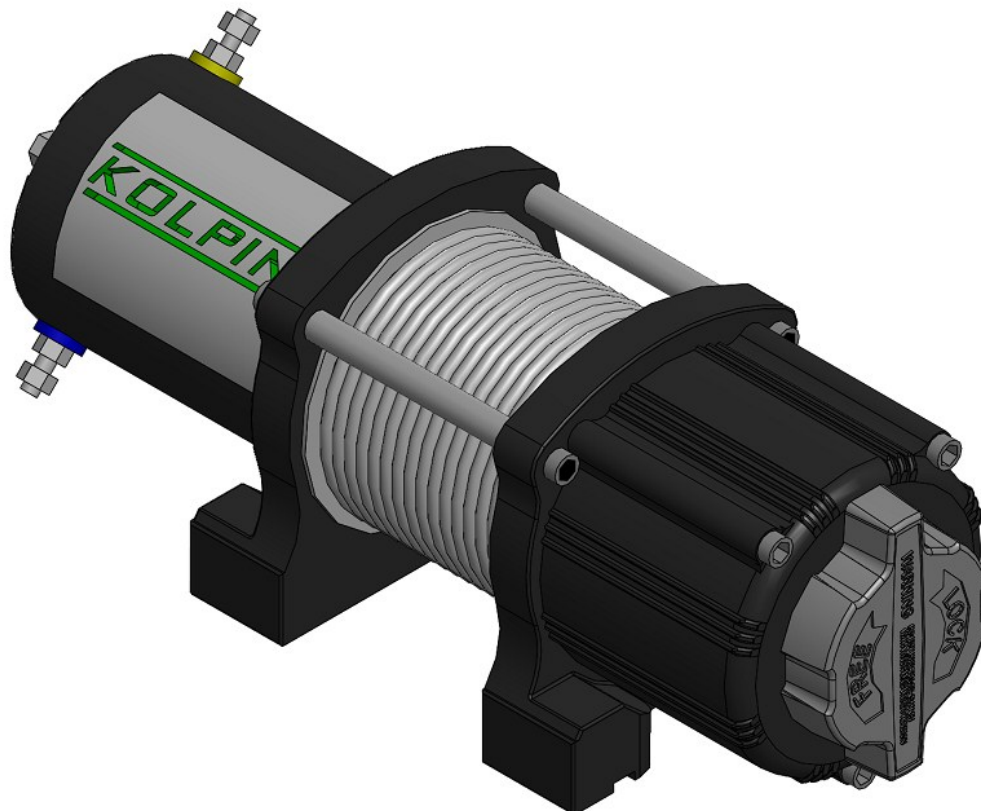


TABLE OF CONTENTS

Introduction

Introduction	3
Guidebook Conventions	3

Controls and Features

4

Winch	4
-------------	---

Assembly

5

Mounting	5
----------------	---

Mounting the winch	5
--------------------------	---

Mounting the handlebar switch	6
-------------------------------------	---

Mounting the contactor/solenoid	6
---------------------------------------	---

Mounting the remote switch (optional)	7
---	---

Wiring the winch	7
------------------------	---

Wiring diagram	8
----------------------	---

ATV/UTV Winch User Guide

9

Winch Safety Precautions	9 - 10
--------------------------------	--------

Winch Operation	11 - 13
-----------------------	---------

Wire Cable Care	13
-----------------------	----

Shock loading	14
---------------------	----

Winch Maintenance and Service Safety

15

Lubrication	15
-------------------	----

Cable Assembly Replacement	15
----------------------------------	----

Specifications

16

Performance Specifications	16
----------------------------------	----

Parts Kit Diagrams and replacement part numbers	17 - 20
---	---------

Troubleshooting

21

Warranty

22

INTRODUCTION

Congratulations on your purchase of a Kolpin winch! The Kolpin winch works great for vehicle recovery and plow lift applications. With proper use and maintenance, this winch will bring many years of satisfying service.

Every effort has been made to ensure the accuracy and completeness of the information in this manual. We reserve the right to change, alter and/or improve the product and this document at any time without prior notice.

Record the part numbers, date of purchase and place of purchase for future reference. Please have this information available when ordering parts and when making technical or warranty inquiries.

Kolpin Powersports Support
1-877-956-5746
Part Number
Date of Purchase
Purchase Location

GUIDEBOOK CONVENTIONS

This manual uses the following symbols to help differentiate between different kinds of information. The safety symbol is used with a signal word to alert you to potential hazards in operating and owning power equipment. Follow all safety messages to avoid or reduce the risk of serious injury or death. Each message has a specific purpose. **PLEASE WORK SAFELY!**

 WARNING
WARNING indicates a potentially hazardous situation that, if not avoided, could result in death or serious injury.

NOTICE
NOTICE indicates a potentially hazardous situation which, if not avoided, may result in property damage.

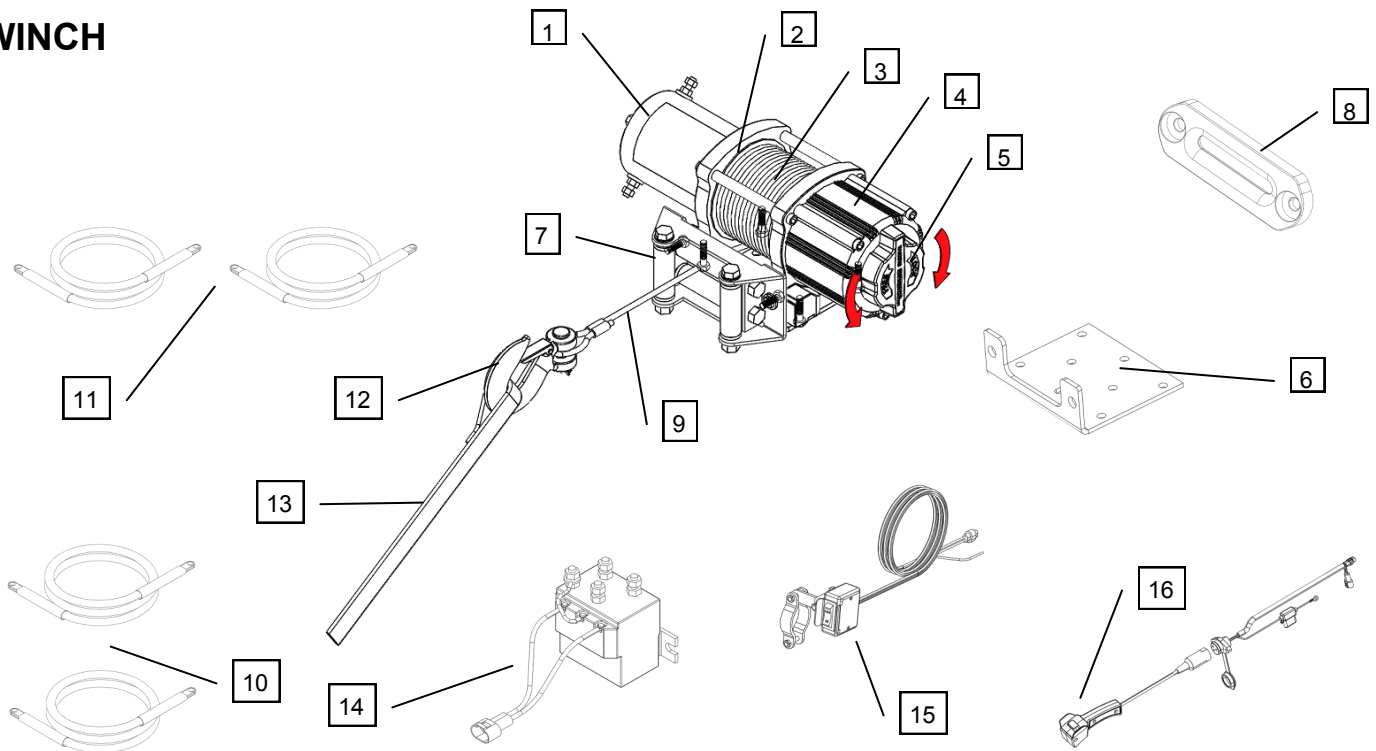
 CAUTION
CAUTION indicates a potentially hazardous situation that, if not avoided, may result in minor or moderate injury.

NOTE
If you have questions regarding your winch, we can help. Please call our help line at 1-877-956-5746 .

CONTROLS AND FEATURES

Read this owner's manual before operating your winch. Familiarize yourself with the location and function of the controls and features. Save this manual for future reference.

WINCH



- (1) **Motor:** 12V DC motor provides power to the planetary gear mechanism.
- (2) **Braking System:** Braking action is automatically applied to the winch drum when the winch motor is stopped and there is a load on the winch cable.
- (3) **Winch Drum:** The winch drum is the cylinder on which the wire rope is stored. It can feed or wind the rope depending on the remote winch switch signal.
- (4) **Planetary Gear System:** The reduction gears convert the winch motor power into extreme pulling forces. This system allows high torque while maintaining compact size and light weight.
- (5) **Free Spooling Clutch:** The clutch allows the operator to manually disengage "Out" the spooling drum from the gear train, free spool. Engaging the clutch "In" locks the winch into the gear system.
- (6) **Mount Assembly:** Flatbed mounting channel.
- (7) **Roller Fairlead:** When using the winch at an angle, the roller fairlead acts to guide the wire rope onto the drum and minimizes damage to the wire rope from abrasion on the winch mount or bumper. Used with steel cable.
- (8) **Aluminum Non-Roller Fairlead:** Provides smooth edge to guide rope onto the drum. Used with synthetic rope.
- (9) **Wire Rope:** Galvanized aircraft cable designed specifically for winch load capacities.
- (10) **Winch Connection Cables:** Used to connect the contactor to the winch motor.
- (11) **Battery Connection Cables:** Used to connect the battery to the contactor.
- (12) **Clevis Hook:** Provides a means for connecting the looped ends of cables to an anchor.
- (13) **Strap:** Used to assist cable feed.
- (14) **Contactor/solenoid:** Power from the vehicle battery flows through the weather sealed contactor/solenoid switch before being directed to the winch motor.
- (15) **Rocker Switch:** Rocker switch with handlebar mount for powering the rope in or out of your winch drum.
- (16) **Corded Remote Switch:** Corded remote switch allows the operator to stand clear during the winching process. Supplied with 4500lb winch kit.

ASSEMBLY

The winch kit comes mostly assembled from the factory. Some pre-assembly of the kit is required for installation into vehicles.

BEFORE YOU BEGIN:

- Your Kolpin accessory is designed for a universe fit for most vehicles.
- Please read and understand all instructions.
- Verify all parts and tools are accounted for.
- To ensure a satisfactory installation, follow all steps correctly and in the sequence described.
- To facilitate installation, make sure that your vehicle is clean and free of debris.
- All directions referring to right and left are when the rider is sitting on the machine

TOOLS REQUIRED:

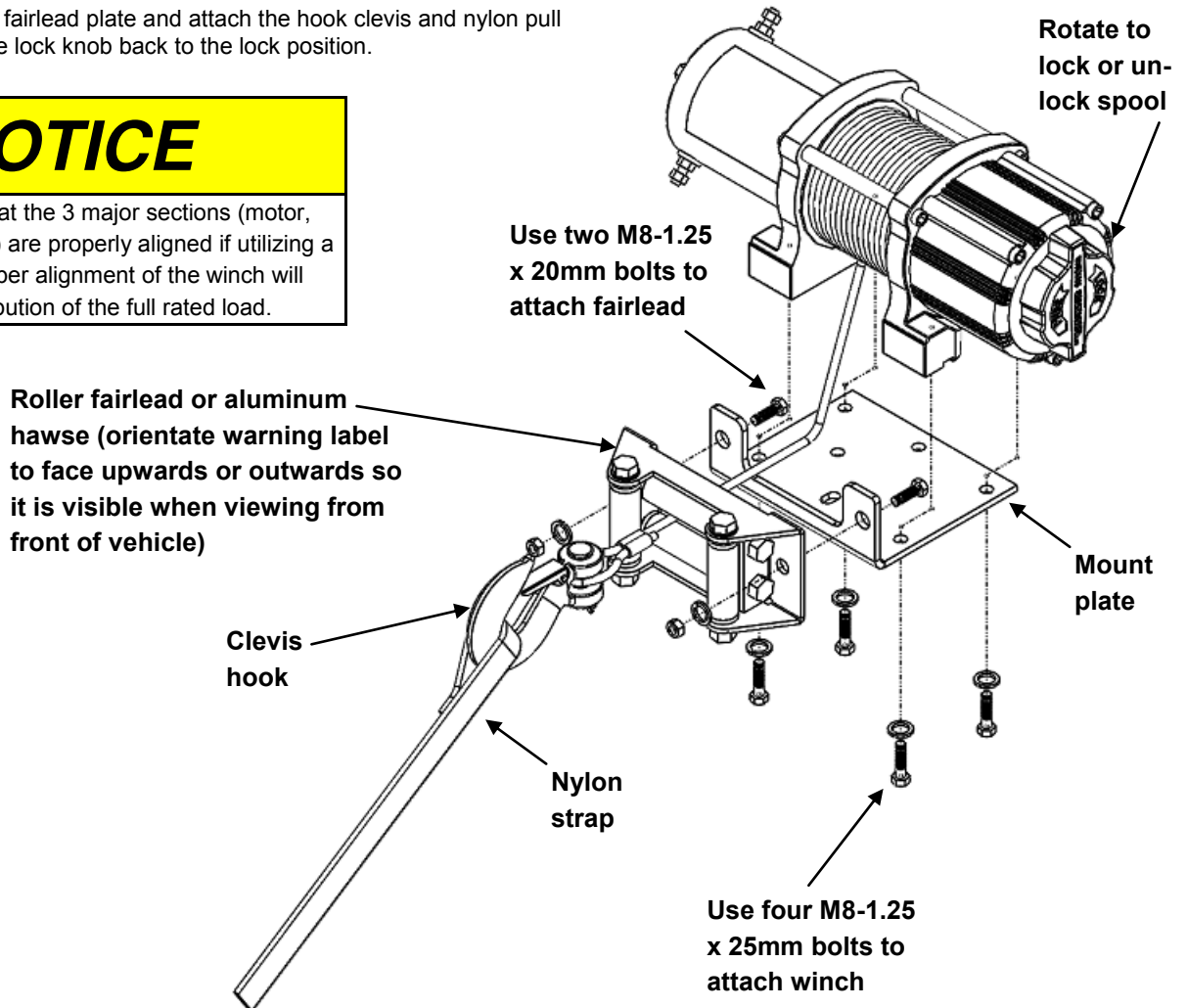
- Basic metric wrench set
- Basic metric socket set
- Pliers
- Philips screwdriver

MOUNTING THE WINCH

- If using a winch mounting kit, refer to the kit's manual for specific instructions.
- Mount the winch to the mount plate as shown below. Rotate the lock knob to the free spool position and feed the winch cable through the rollers of the roller fairlead.
- Mount the roller fairlead plate and attach the hook clevis and nylon pull strap. Rotate the lock knob back to the lock position.

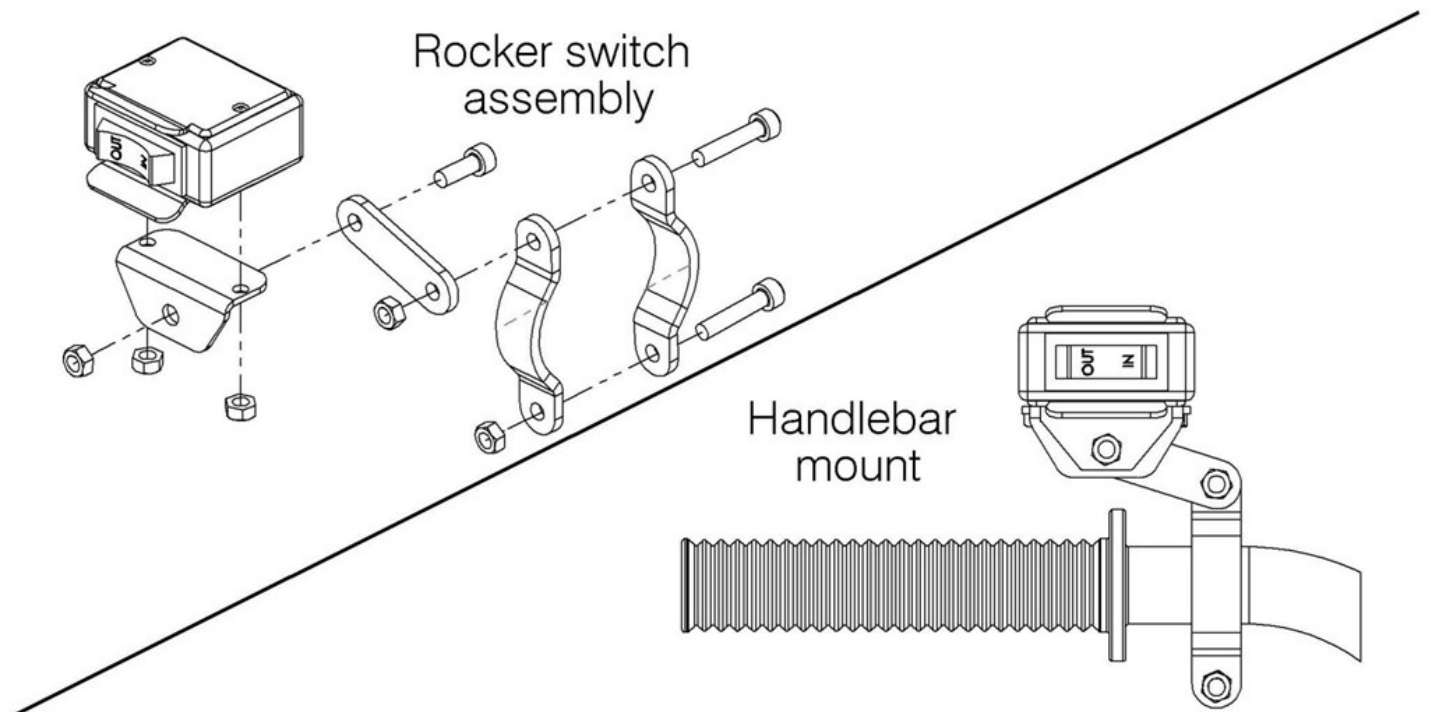
! WARNING
ALWAYS use supplied hook strap.

NOTICE
ALWAYS ensure that the 3 major sections (motor, drum, gear housing) are properly aligned if utilizing a mounting plate. Proper alignment of the winch will allow for even distribution of the full rated load.



MOUNTING THE HANDLEBAR SWITCH

- Install the rocker switch to the handlebar using the hardware included in this kit as shown below.
- It is recommended that the switch be installed on the left handlebar. Exact position may vary depending on vehicle.
- Use a piece of electrical tape (not provided) around the handlebar to help prevent rotation of the switch bracket mount.
- Tighten the rocker switch in place. DO NOT overtighten or tighten/clamp over any hose, wiring or cables.
- Once the rocker switch is mounted, the wires can be routed to the contactor/solenoid location.
- Make sure the handlebars have full range of motion, vehicle switches/brakes/throttle can move freely, and then secure the rocker switch's cable with the supplied cable ties.
- Using the provided wire splice, splice the end of the red 20ga wire to a key controlled, fused, accessory circuit (power point) of the ATV/UTV. The wire should only have power when the key is in the "ON" position.



MOUNTING THE CONTACTOR/SOLENOID

- The contactor/solenoid is a primary safety feature in the winch system. It disconnects the winch from its power source when the vehicle is not in use. The contactor/solenoid must be correctly installed to work properly.
- Find a location for the contactor/solenoid. It is recommended that the contactor/solenoid be mounted close to the battery in a clean, dry location. The exact location of the contactor/solenoid will vary depending on the vehicle. Make sure the location chosen allows for sufficient clearance from all metal components such as frame tubes. DO NOT place tools or other items in a position that might come in contact with the contactor/solenoid posts.
- Drill mounting holes if required. Secure the contactor/solenoid using the provided hardware.
- Once a location is found for the contactor/solenoid, DO NOT install the unit until all wiring is completed (see wiring section). Pre-fit all wiring to confirm its long enough to reach the battery and the winch contact locations.

⚠ WARNING

NEVER short battery terminals with metal objects. Be aware terminals in contact with metal will cause a direct short, possibly causing contactor/ solenoid and/or battery damage.

MOUNTING THE REMOTE SWITCH

(optional on some models)

- Determine the mounting location for the remote socket. Exact position may vary depending on vehicle. Drill three holes and install to vehicle dash panel or body panel.
- Route the wire harness to where the contactor/solenoid will be mounted. Secure the socket's cable with the supplied cable ties.
- Using the provided wire splice, splice the end of the red 20ga wire to a key controlled, accessory circuit (power-point) of the ATV/UTV or use the provided 20ga wire eyelet terminal connector to connect to a vehicle terminal strip post. The wire should only have power when the key is in the "ON" position.
- *NOTE: If installing both switches (handlebar rocker and corded remote), both 20ga red wires must be connected together with the provided plug connectors or spliced to a key-controlled accessory circuit of the ATV/UTV as described in the above step.*

NOTICE

ALWAYS make sure to splice into keyed accessory wire that has power when key is turned on. You may need to use a test light to locate a suitable wire.

WIRING THE WINCH

- Install the wiring using the diagram on the next page.
- Slip terminal boots on yellow and blue cable ends. Connect the yellow and blue cables to the color-matched motor terminals on the winch. Tighten the terminal nuts on the motor. **DO NOT** overtighten. Seat boots over terminal. Route the other ends to the contactor/solenoid location.
- Connect the yellow and blue cables to the contactor/solenoid (yellow to yellow and blue to blue). **DO NOT** tighten nuts or seat boots at this time.
- Slip terminal boots on the ring terminal ends of the black and red cables. Connect the black and red cables to the contactor/solenoid (red to red and black to black). **DO NOT** tighten nuts or seat boots at this time. Route red and black cables to battery. **DO NOT** connect cables to battery at this time.
- *Mount the contactor to the location planned in the previous steps with provided hardware. Tighten the contactor/solenoid mounting fasteners. **DO NOT** overtighten.*
- Adjust cables to facilitate orderly and straight routing of the cables from the contactor/solenoid. Avoid kinks or sharp bends in the cables. Avoid crossing cables over each other for at least the first 6" of cable starting from the contactor/solenoid post. Tighten the contactor/solenoid terminal nuts. **DO NOT** over tighten. Seat terminal boots over ring terminals and posts.
- Connect the rocker switch to the contactor/solenoid using the provided plug. Splice the end of the red wire on the rocker switch, to a vehicle accessory circuit controlled by ignition controlled power source (keyed). The wire should only have power when the key is in the "ON" position.
- Carefully inspect battery and winch electrical cable routing to ensure it is neat and tidy. Secure electrical cables and wiring harnesses with provided cable ties. Cable ties should be snug, but not cutting into wire insulation. Use electrical tape, pieces of rubber hose or electrical conduit to protect electrical cables and wire harnesses where needed to avoid electrical cable insulation wear or abrasion.
- Connect the red lead to the positive (+) terminal of the vehicle's 12 volt battery first. Connect the black lead to the negative (-) terminal of the vehicle's 12 volt battery second. Install protective boots as appropriate to protect connection. Tighten battery terminal fasteners as directed in the vehicle service manual to the proper torque specification.
- Check for proper drum rotation. Pull and turn the clutch knob to the "free spool" position. Pull out some cable from the drum, and then turn the clutch knob to the "locked spool" position to engage the gears. Press the cable out button on the rocker switch. If the drum is turning and releasing more cable, your connections are accurate. If the drum is turning and collecting more cable, then reverse the leads on the motor. Repeat and check rotation.
- With some applications, the motor terminal posts may need to be rotated to avoid interference with other components.

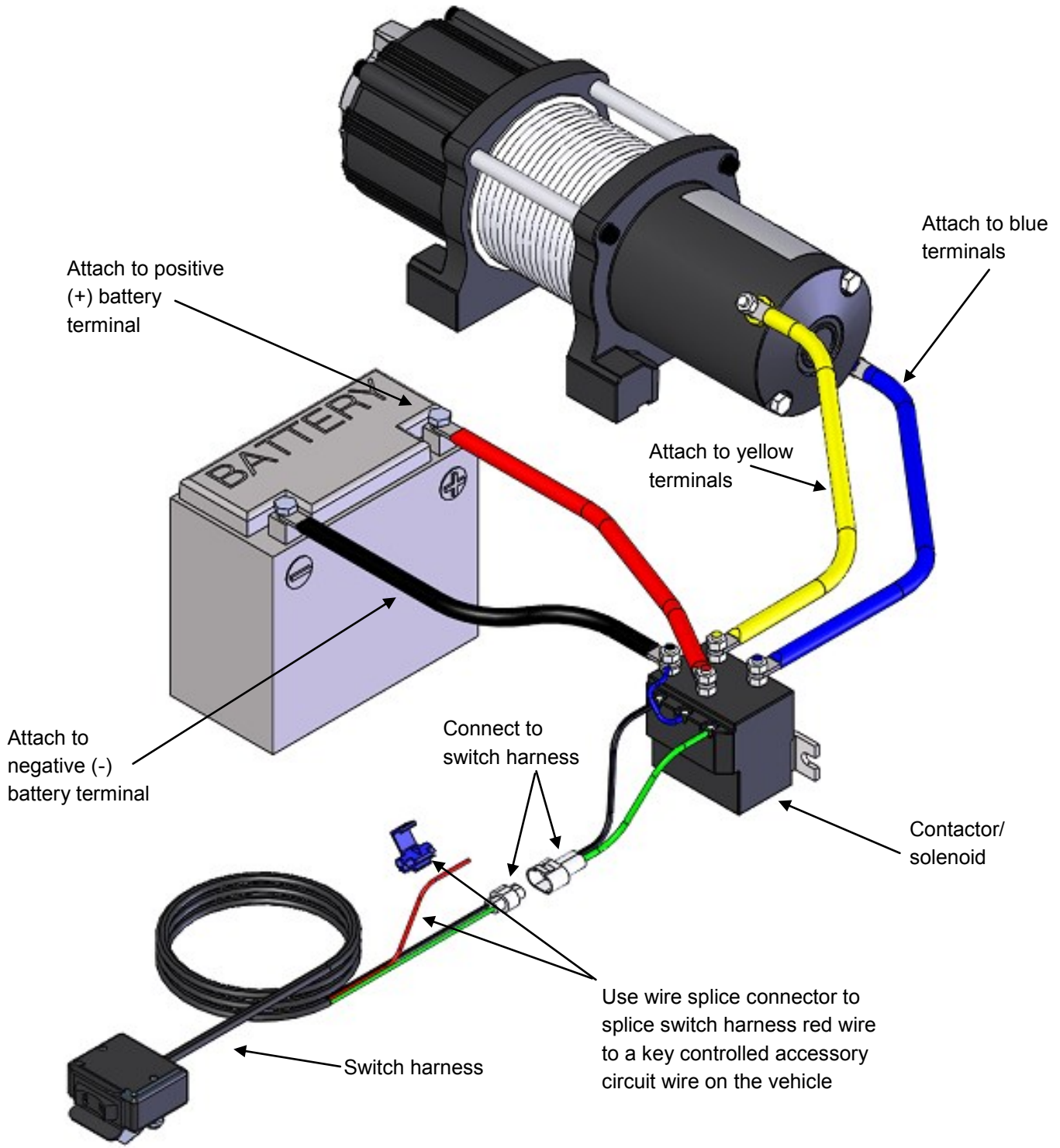
CAUTION

NEVER route electrical cables across any sharp edges, through and /or near moving parts, or near parts that may become hot.

CAUTION

ALWAYS leave some slack for electrical cable movement. Battery cables should **NOT** be drawn taut.

WIRING DIAGRAM



ATV/UTV WINCH USER GUIDE

Before you begin using your winch, read and understand the guide. Please retain this guide for future reference.

These safety warnings and instructions apply if you choose to add an accessory winch to your vehicle.



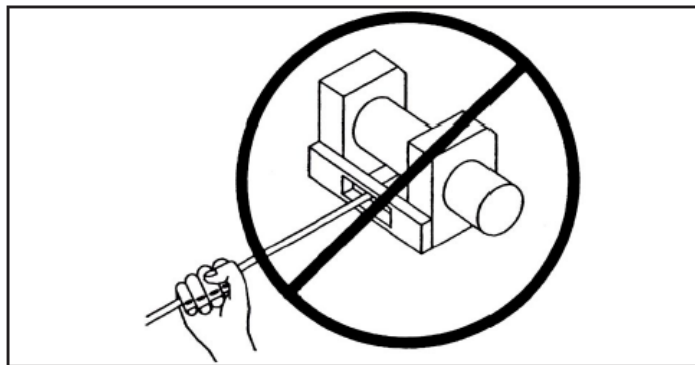
Your winch may have a cable made of either wire rope or specially designed synthetic rope. The term “winch cable” will be used for either unless noted otherwise.

WINCH SAFETY PRECAUTIONS

1. Read all sections of this manual.
2. Never use alcohol or drugs before or while operating the winch.
3. Never allow children under 16 years of age to operate the winch.
4. Always wear eye protection and heavy gloves when operating the winch.
5. Always keep body, hair, clothing and jewelry clear of the winch cable, fairlead and hook when operating winch.
6. Never attempt to “jerk” a load attached to the winch with a moving vehicle. See the *Shock Loading* section on page 14.
7. Always keep the area around the vehicle, winch, winch cable and load clear of people (especially children) and distractions while operating the winch.
8. Always turn the vehicle ignition power OFF when it and the winch are not being used.
9. Always be sure that at least five full turns of winch cable are wrapped around the winch drum at all times. The friction provided by this wrapped cable allows the drum to pull on the winch cable and move the load.
10. Always apply your vehicle’s park brake and/or park mechanism to hold the vehicle in place during winching. Use wheel chocks if needed.
11. Always align the vehicle and winch with the load directly in front of the vehicle as much as possible. Avoid winching with the winch cable at an angle to the winching vehicle’s center line whenever possible.
12. If winching at an angle is unavoidable, follow these precautions:
 - A. Look at the winch drum occasionally. Never let the winch cable “stack” or accumulate at one end of the winch drum. Too much winch cable at one end of the winch drum can damage the winch and the winch cable.
 - B. If stacking occurs, stop winching. Follow step 15 on page 4 to feed and rewind the cable evenly before continuing the winch operation.
13. Never winch up or down at sharp angles. This can destabilize the winching vehicle and possibly cause it to move without warning.
14. Never attempt to winch loads that weigh more than the winch’s rated capacity.
15. The winch motor may become hot during winch use. If you winch for more than 45 seconds, or if the winch stalls during operation, stop winching and permit the winch to cool down for 10 minutes before using it again.

WINCH SAFETY PRECAUTIONS (continued)

16. Never touch, push, pull or straddle the winch cable while winching a load.
17. Never let the winch cable run through your hands, even if wearing heavy gloves.
18. Never release the clutch on the winch when the winch cable is under load.
19. Never use the winch for lifting or transporting people.
20. Never use the winch to hoist or suspend a vertical load.
21. Never immerse or submerge your winch in water. Take your winch to your dealer for service if this occurs.
22. Always inspect your winch and winch cable before each use.
23. Never winch the hook fully into the winch. This can cause damage to winch components.
24. Unplug the remote control from the vehicle when the winch is not in use to prevent inadvertent activation and use by unauthorized persons.
25. Never grease or oil the winch cable. This will cause the winch cable to collect debris that will shorten the life of the cable.



WINCH OPERATION

Read the *Winch Safety Precautions* in the preceding pages before using your winch.

TIP: Consider practicing the operation and use of your winch before you actually need to use it in the field.

 **WARNING**

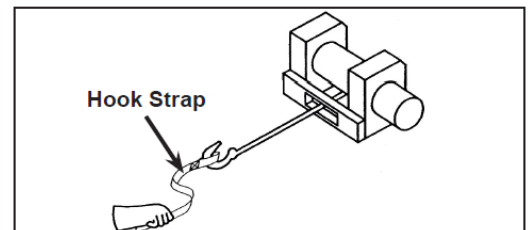
ALWAYS follow all winch instructions and warnings in this manual. Improper winch use can result in SEVERE INJURY or DEATH.

Each winching situation is unique:

- Take your time to think through the winching you are about to do.
 - Proceed slowly and deliberately.
 - Never hurry or rush during winching.
 - Always pay attention to your surroundings.
 - You may need to change your winching strategy if it is not working.
 - Always remember that your winch is very powerful.
 - There are simply some situations that you and your winch will not be able to deal with. Do not be afraid to ask others to help when this happens.
1. Always inspect the vehicle, winch, winch cable and winch controls for any signs of damage or parts in need of repair or replacement before each use. *Pay particular attention to the first three feet (one meter) of the winch cable if the winch is being used (or has been used) for lifting an accessory plow assembly.* Promptly replace any worn or damaged cable.
 2. Never operate a winch or a vehicle in need of repair or service.
 3. Always apply your vehicle's parking brake and/or park mechanism to hold the vehicle in place during winching. Use wheel chocks if needed.
 4. Always use the hook strap when handling the hook.

 **WARNING**


NEVER put your fingers into the hook. This could lead to SEVERE INJURY.



- A. Attach the hook itself onto the load or use a tow strap or chain to secure the load to the winch cable.

TIP: A "tow strap" is NOT intended to stretch. A "recovery strap" is designed to stretch.



 **WARNING**

NEVER use a recovery strap when winching due to the excessive energy that can be released if the winch cable breaks. This can result in SEVERE INJURY or DEATH. See the Shock Loading section on page 14.

WINCH OPERATION (continued)

- B. Never hook the winch cable back onto itself. This will damage the winch cable and may result in winch cable failure.

 **WARNING**

ALWAYS replace the winch cable at the first sign of damage to prevent SEVERE INJURY or DEATH in the event of a failure. For your safety, always replace KOLPIN winch parts (including the cable) with KOLPIN replacement parts available at your authorized KOLPIN dealer or the KOLPIN website.

- C. If possible, keep the winch cable aligned with the center line of the winching vehicle. This will help the spooling of the winch cable and reduce the load on the fairlead.
- D. If freeing a stuck vehicle by attaching to a tree, use an item such as a tow strap to avoid damaging the tree during winch operation. Sharp cables and chains can damage and even kill trees. Please remember to Tread Lightly® (treadlightly.org).

- E. Before operating the winch, be sure that the safety latch on the winch cable hook is fully seated when the load is attached.
- F. Never operate your winch with a damaged hook or latch. Always replace damaged parts before using the winch.

5. Never remove the hook strap from the hook.

6. Release the winch clutch and pull out the winch cable.

7. Pulling out as much cable as possible maximizes the winch's pulling capacity. Always be sure that at least five full turns of winch cable are wrapped around the winch drum at all times. The friction provided by this wrapped cable allows the drum to pull on the winch cable and move the load.

8. Read and adhere to the following information for winch damping to ensure safe winch use.

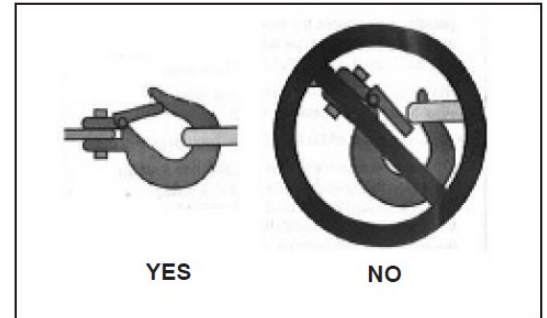
- A. In order to absorb energy that could be released by a winch cable failure, always place a "damper" on the winch cable. A damper can be a heavy jacket, tarp, or other soft, dense object. A damper can absorb much of the energy released if a winch cable breaks when winching. Even a tree limb can help as a damper if no other items are available to you.
- B. Lay the damper on top of the mid-point of the winch cable length that is spooled out.
- C. On a long pull, it may be necessary to stop winching so that the damper can be repositioned to the new mid-point of the winch cable. Always release the tension on the winch cable before repositioning the damper.
- D. Avoid being directly in line with the winch cable whenever possible. Also, never permit others to stand near or in line with the winch cable during winch operation.

9. Never hook the winch cable back onto itself. This will damage the winch cable and may result in winch cable failure.

10. Never use straps, chains or other rigging items that are damaged or worn.

11. The ONLY time a winch-equipped vehicle should be moving when using the winch is when the vehicle itself is stuck. The winch equipped vehicle should NEVER be in motion to "shock" load the winch cable in an attempt to move a second stuck vehicle. See the *Shock Loading* section on page 14. For your safety, always follow these guidelines when winching a vehicle free:

- A. Release the winch clutch and spool out the necessary length of winch cable.
- B. Align the winch cable as close as possible to the winching vehicle's center line.
- C. Attach the winch cable hook to the anchor point or the stuck vehicle's frame following instructions in this manual.
- D. Re-engage the clutch on the winch.
- E. Slowly winch in the slack in the winch cable.
- F. Select the proper vehicle gear to propel the stuck vehicle in the direction of winching.
- G. Shift to the lowest gear available on the stuck vehicle.
- H. Slowly and carefully apply vehicle throttle and winch together to free the vehicle.
- I. Stop winching as soon as the stuck vehicle is able to propel itself without the help of the winch.
- J. Detach the winch cable hook.
- K. Rewind the winch cable evenly back onto the winch drum following the instructions in this manual.




WINCH OPERATION (continued)

12. Never attempt to winch another stuck vehicle by attaching the winch cable to a suspension component, brush guard, bumper or cargo rack. Vehicle damage may result. Instead, attach the winch to a strong portion of the vehicle frame or hitch.
13. Extensive winching will run down the battery on the winching vehicle. Let the winching vehicle's engine run while operating the winch to prevent the battery from running low if winching for long periods.
14. The winch motor may become hot during winch use. If you winch for more than 45 seconds, or if the winch stalls during operation, stop winching and permit the winch to cool down for 10 minutes before using it again.
15. After winching is complete, especially if winching at an angle, it may be necessary to re-distribute the winch cable across the winch drum. You will need an assistant to perform this task.
 - A. Release the clutch on the winch.
 - B. Feed out the winch cable that is unevenly bunched up in one area.
 - C. Re-engage the winch clutch.
 - D. Have an assistant pull the winch cable tightly with about 100 lbs. (45 kg) of tension using the hook strap.
 - E. Slowly winch the cable in while your assistant moves the end of the winch cable back and forth horizontally to evenly distribute the winch cable on the drum.
 - F. Doing this reduces the chances of the winch cable "wedging" itself between lower layers of winch cable.

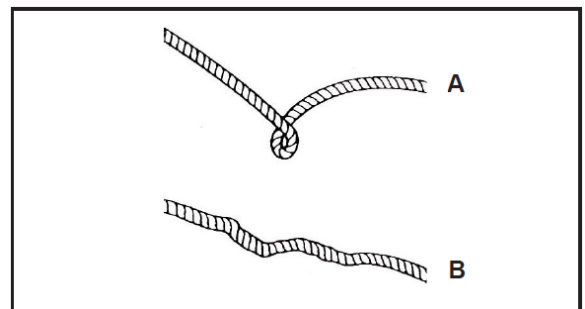
WINCH CABLE CARE

For your safety, always replace KOLPIN winch parts (including the cable) with KOLPIN replacement parts available at your authorized KOLPIN dealer or the KOLPIN website (Kolpin.com).


 **WARNING**

NEVER use a worn or damaged cable. Use of a worn or damaged cable could lead to sudden failure and SEVERE INJURY.

1. Always inspect your winch before each use. Inspect for worn or loose parts including mounting hardware. Never use the winch if any part needs repair or replacement.
2. Always inspect your winch cable before each use. Inspect for worn or kinked winch cable.
 - A. A kinked winch cable made of wire rope is shown at right. Even after being "straightened out," this cable has already been permanently and severely damaged. Promptly discontinue use of a winch cable in this condition.
 - B. A kinked winch cable made of wire rope that has been "straightened out" is shown at right. Even though it may look usable, the cable has been permanently and severely damaged. It can no longer transmit the load that it could prior to kinking. Promptly discontinue use of a winch cable in this condition.
 - C. A winch cable made of synthetic rope should be inspected for signs of fraying. Replace the cable if fraying is observed (shown at right). Promptly discontinue use of a winch cable in this condition.
 - D. Also replace the winch cable if there are fused or melted fibers. Such an area of the synthetic rope will be stiff and appear smooth or glazed. Promptly discontinue use of a winch cable in this condition.




SHOCK LOADING

 WARNING
<p>NEVER shock load a winch cable. Your winch cable is very strong but it is NOT designed for dynamic, or “shock” loading. Shock loading may tension a winch cable beyond its strength and cause the cable to break. The end of a broken winch cable under such high loading can cause SEVERE INJURY or DEATH to you and other bystanders.</p>

Winch cables are designed to NOT absorb energy. This is true of both wire-rope and synthetic-rope winch cables.

1. Never attempt to “jerk” a load with the winch. For example, never take up slack in the winch cable by moving the winching vehicle in an attempt to move an object. This is a dangerous practice. It generates high winch cable loads that may exceed the strength of the cable. Even a slowly moving vehicle can create large shock loads in a winch cable.

 WARNING
<p>NEVER use a broken winch cable. SEVERE INJURY or DEATH can result.</p>


2. Never quickly turn the winch ON and OFF repeatedly (“jogging”). This puts extra load on the winch, winch cable, and generates excessive heat from the motor. This is a form of shock loading.
3. Never tow a vehicle or other object with your winch. Towing an object with a winch produces shock loading of the cable even when towing at slow speeds. Towing from a winch also positions the towing force high on the vehicle. This can cause instability of the vehicle and possibly lead to an accident.
4. Never use recovery straps with your winch. Recovery straps are designed to stretch and can store energy. This stored energy in the recovery strap is released if a winch cable fails making the event even more hazardous. Similarly, never use elastic “bungie” cords for winching.
5. Never use the winch to tie down a vehicle to a trailer or other transportation vehicle. This type of use also causes shock loading that can cause damage to the winch, winch cable, or vehicles used.
6. **Your winch cable is designed and tested to withstand the loads produced by the winch motor when operated from a stationary vehicle. Always remember that the winch and winch cable are NOT designed for shock loading.**

WINCH MAINTENANCE AND SERVICE SAFETY

 **WARNING**

ALWAYS follow all winch instructions and warnings in this manual. Improper or lack of winch maintenance and service could lead to SEVERE INJURY or DEATH.

1. Always inspect your winch before each use. Inspect for worn or kinked winch cable. Also inspect for worn or loose parts including mounting hardware.
2. Permit your winch motor to cool down prior to servicing your winch.
3. Never work on your winch without first disconnecting the battery connections to prevent accidental activation of the winch
4. For your safety, always replace KOLPIN winch parts (including the cable) with KOLPIN replacement parts available at your authorized KOLPIN dealer or the KOLPIN website (Kolpin.com).
5. Some winch models use wire rope as the winch cable. Other winches use a specially designed synthetic rope as the winch cable.
6. Never replace a synthetic-rope winch cable with a consumer-grade polymer rope such as can be purchased in a hardware store. Although they may look similar, they are NOT alike. A polymer rope not designed for winch use will stretch and store excessive energy when winching.

 **WARNING**

ALWAYS be aware that failure of a stretched rope under winching conditions will release all of the stored energy. This will increase the chances of SEVERE INJURY or DEATH.

LUBRICATION

All moving parts within the electric winch have been lubricated using high temperature grease at the factory. No internal lubrication is required. Never grease or oil the winch cable. This will cause the winch cable to collect debris that will shorten the life of the cable.

CABLE ASSEMBLY REPLACEMENT

It is recommended that only KOLPIN supplied parts be used.

1. Move the clutch to the “free-spool” position.
2. Extend cable assembly to its full length. Note how the existing cable is connected to the inside of the drum.
3. Remove old cable assembly and attach new one.
4. Retract cable assembly onto drum being careful not to allow kinking.

NOTE

For service or parts assistance, contact our help line at **1-877-956-5746**.

PERFORMANCE SPECIFICATIONS

- Motor: 12V DC, permanent magnet type, heavy duty
 - 1.1 HP 2500 lb. rated pull
 - 1.2 HP 3500 lb. rated pull
 - 1.3 HP 4500 lb. rated pull
- Motor duty cycle: Intermittent
- Gear reduction ratio 166 : 1
- Brake: Mechanical
- Electric cable leads 6 gauge
- Winch cable size:
 - 50' length x 3/16" diameter wire rope 2500 lb. rated pull
 - 50' length x 7/32" diameter wire rope 3500 lb. rated pull
 - 50' length x 7/32" diameter wire rope 4500 lb. rated pull
- Drum size: 50mm diameter x 74mm length

2500 lb. Specifications:

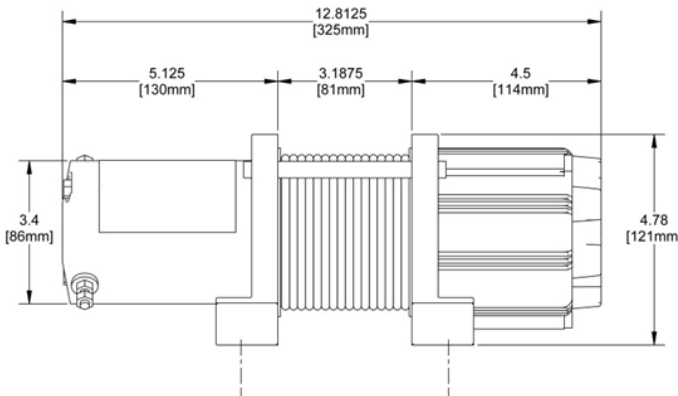
Line Pull (lbs)	Line Speed (ft/min)	Motor (amps)
0	25	24
500	18	50
1500	15	118
2500	9	210

3500 lb. Specifications:

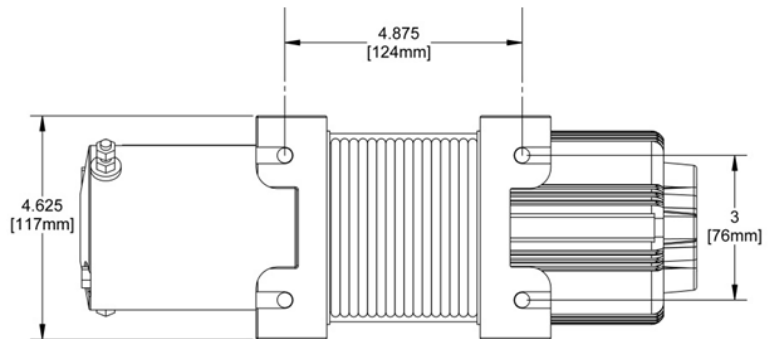
Line Pull (lbs)	Line Speed (ft/min)	Motor (amps)
0	23	24
500	17	56
1500	14	120
2500	9	220
3500	7	240

4500 lb. Specifications:

Line Pull (lbs)	Line Speed (ft/min)	Motor (amps)
0	23	29
500	17	60
1500	14	130
2500	9	225
3500	7	260
4500	5	310



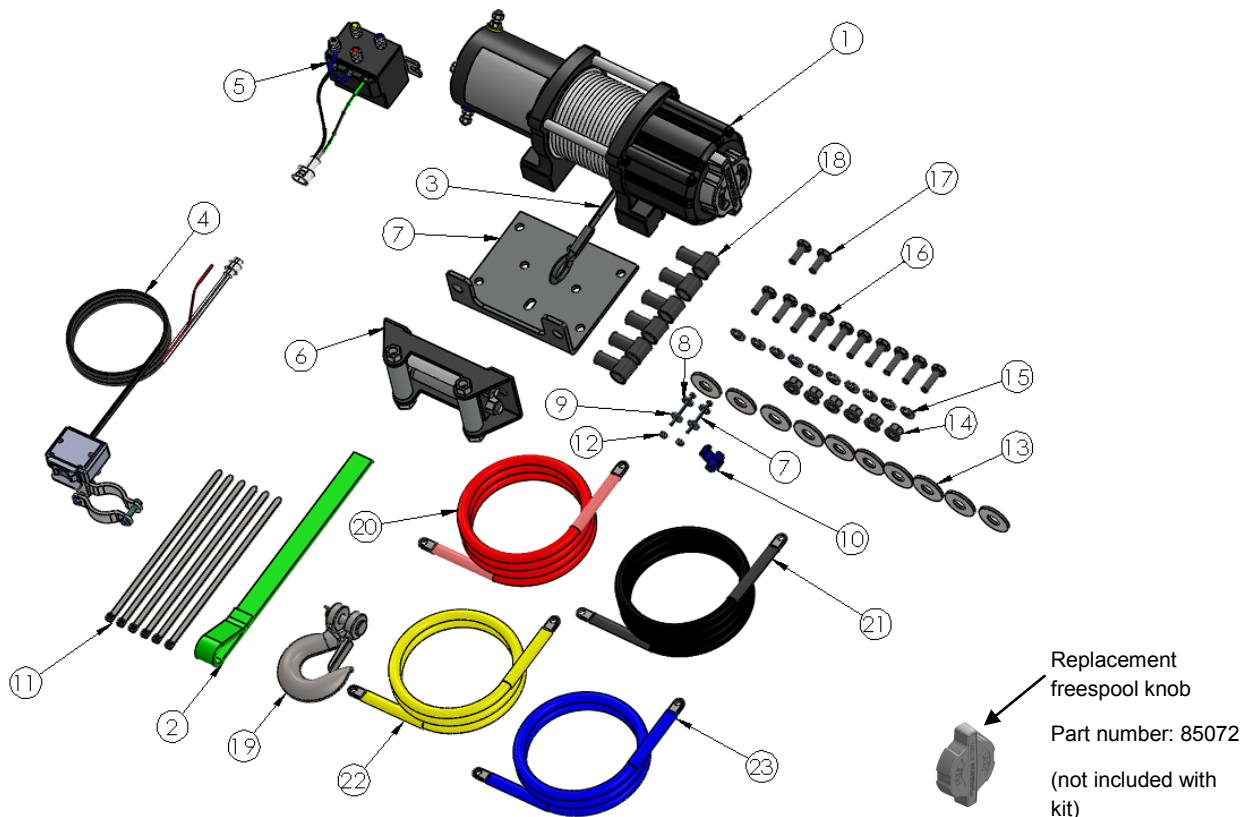
Winch Dimensions - Front View



Winch Dimensions - Bottom View

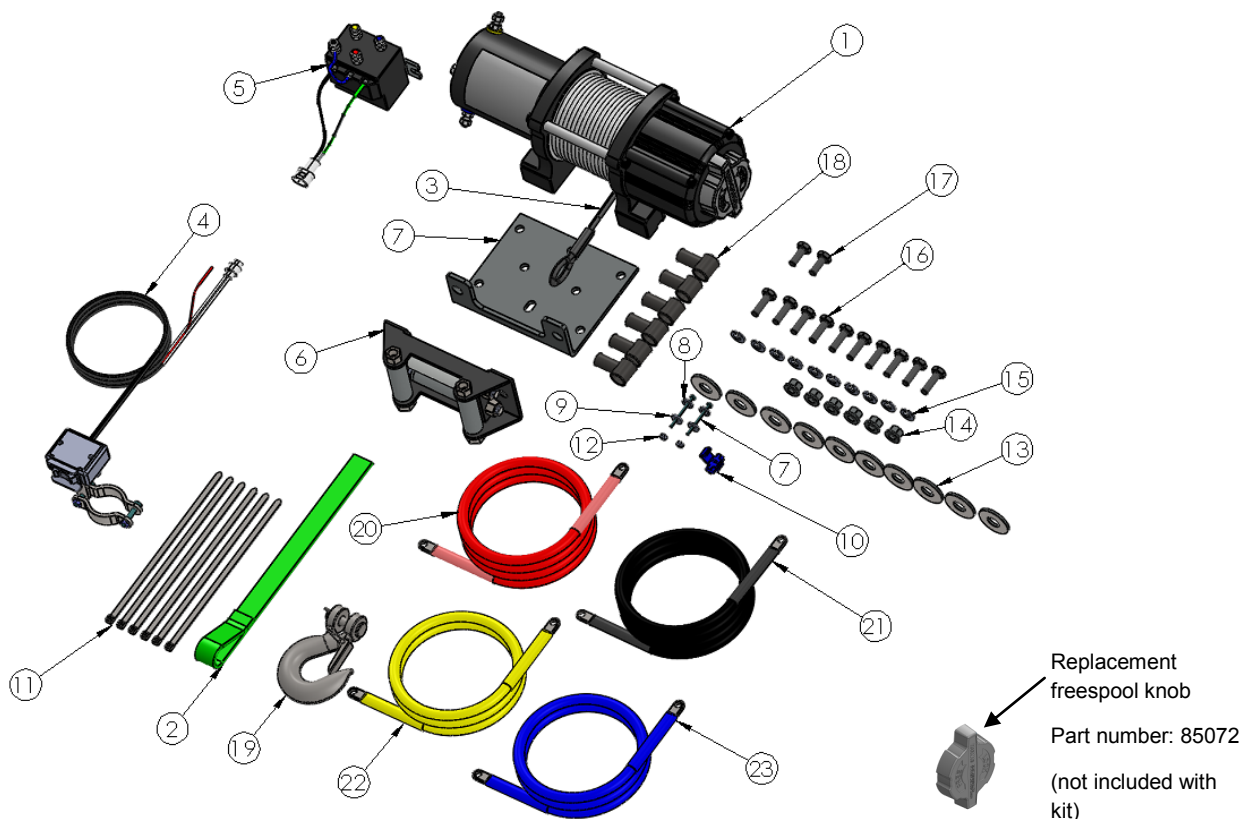
25-9250 Kit Contents (2500 lb) and Replacement Part Numbers:

Item	Qty	Part Description	Replacement Part Number
1	1	Replacement Winch 2500#	25-9250R
2	1	Kolpin winch hook strap	85061
3	1	Kolpin winch cable, steel, 3/16" diameter x 50' length	85062
4	1	Rocker switch	85066
5	1	Contactor/solenoid	85068
6	1	Roller fairlead	85069
7	1	Mount plate	-
8	2	Lock washer, M4	-
9	2	Flat washer, M4	-
10	1	Scotch lock	-
11	6	Cable tie, 8"	-
12	2	Hex nut, M4	-
13	10	Flat washer, M8	-
14	6	Hex nut, M8 x 1.25	-
15	10	Lock washer, M8	-
16	10	Hex bolt, M8 x 1.25 x 25mm zinc plated	-
17	2	Hex bolt, M8 x 1.25 x 20mm zinc plated	-
18	6	Terminal cap	RPR0109
19	1	Clevis hook	RPR0108
20	1	Cable, red, 6-gauge, 36"	RPR0119A
21	1	Cable, black, 6-gauge, 36"	RPR0120A
22	1	Cable, yellow, 6-gauge, 36"	RPR0121
23	1	Cable, blue, 6-gauge, 36"	RPR0122



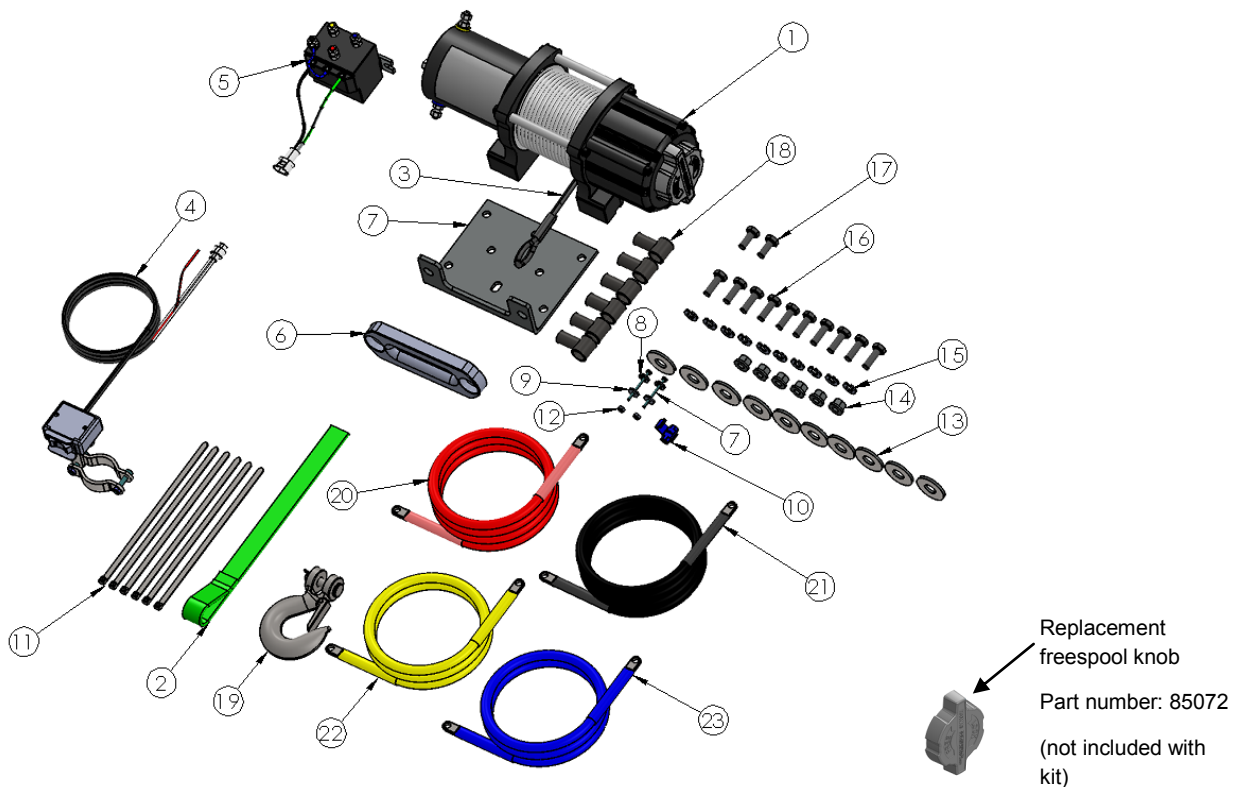
25-9350 Kit Contents (3500 lb) and Replacement Part Numbers:

Item	Qty	Part Description	Replacement Part Number
1	1	Replacement Winch 3500#	25-9350R
2	1	Kolpin winch hook strap	85061
3	1	Kolpin winch cable, steel, 7/32" diameter x 50' length	85063
4	1	Rocker switch	85066
5	1	Contactor/solenoid	85068
6	1	Roller fairlead	85069
7	1	Mount plate	-
8	2	Lock washer, M4	-
9	2	Flat washer, M4	-
10	1	Scotch lock	-
11	6	Cable tie, 8"	-
12	2	Hex nut, M4	-
13	10	Flat washer, M8	-
14	6	Hex nut, M8 x 1.25	-
15	10	Lock washer, M8	-
16	10	Hex bolt, M8 x 1.25 x 25mm zinc plated	-
17	2	Hex bolt, M8 x 1.25 x 20mm zinc plated	-
18	6	Terminal cap	RPR0109
19	1	Clevis hook	RPR0108
20	1	Cable, red, 6-gauge, 36"	RPR0119A
21	1	Cable, black, 6-gauge, 36"	RPR0120A
22	1	Cable, yellow, 6-gauge, 36"	RPR0121
23	1	Cable, blue, 6-gauge, 36"	RPR0122



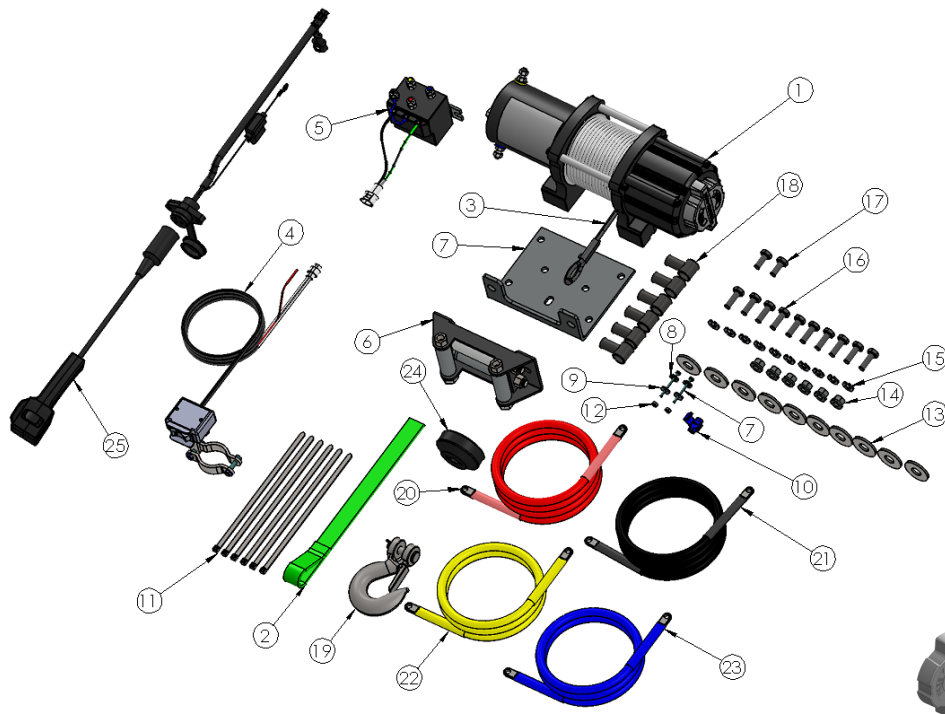
25-9355 Kit Contents (3500 lb synthetic rope) and Replacement Part Numbers:

Item	Qty	Part Description	Replacement Part Number
1	1	Replacement Winch 3500#	25-9350R
2	1	Kolpin winch hook strap	85061
3	1	Kolpin winch rope, synthetic, 50' length	85064
4	1	Rocker switch	85066
5	1	Contactor/solenoid	85068
6	1	Aluminum smooth hawse	85070
7	1	Mount plate	-
8	2	Lock washer, M4	-
9	2	Flat washer, M4	-
10	1	Scotch lock	-
11	6	Cable tie, 8"	-
12	2	Hex nut, M4	-
13	10	Flat washer, M8	-
14	6	Hex nut, M8 x 1.25	-
15	10	Lock washer, M8	-
16	10	Hex bolt, M8 x 1.25 x 25mm zinc plated	-
17	2	Hex bolt, M8 x 1.25 x 20mm zinc plated	-
18	6	Terminal cap	RPR0109
19	1	Clevis hook	RPR0108
20	1	Cable, red, 6-gauge, 36"	RPR0119A
21	1	Cable, black, 6-gauge, 36"	RPR0120A
22	1	Cable, yellow, 6-gauge, 36"	RPR0121
23	1	Cable, blue, 6-gauge, 36"	RPR0122



25-9450 Kit Contents (4500 lb) and Replacement Part Numbers:

Item	Qty	Part Description	Replacement Part Number
1	1	Replacement Winch 3500#	25-9450R
2	1	Kolpin winch hook strap	85061
3	1	Kolpin winch cable, steel, 7/32" diameter	85063
4	1	Rocker switch	85066
5	1	Contactor/solenoid	85068
6	1	Roller fairlead	85069
7	1	Mount plate	-
8	2	Lock washer, M4	-
9	2	Flat washer, M4	-
10	1	Scotch lock	-
11	6	Cable tie, 8"	-
12	2	Hex nut, M4	-
13	10	Flat washer, M8	-
14	6	Hex nut, M8 x 1.25	-
15	10	Lock washer, M8	-
16	10	Hex bolt, M8 x 1.25 x 25mm zinc plated	-
17	2	Hex bolt, M8 x 1.25 x 20mm zinc plated	-
18	6	Terminal cap	RPR0109
19	1	Clevis hook	RPR0108
20	1	Cable, red, 6-gauge, 36"	RPR0119A
21	1	Cable, black, 6-gauge, 36"	RPR0120A
22	1	Cable, yellow, 6-gauge, 36"	RPR0121
23	1	Cable, blue, 6-gauge, 36"	RPR0122
24	1	Rubber stopper	25-0330
25	1	Remote switch	85067



Replacement
freespool knob
Part number: 85072
(not included with
kit)

TROUBLESHOOTING

Problem	Cause	Solution
Motor does not turn	Switch assembly not connected properly	Insert switch assembly all the way into the connector.
	Loose battery cable connections	Tighten nuts on all cable connections.
	Contactor malfunctioning	Tap contactor to loosen contacts. Apply 12 volts to coil terminals directly. A clicking indicates proper activation.
	Defective switch assembly	Replace switch assembly.
	Defective motor	Check for voltage at armature port with switch pressed. If voltage is present, replace winch assembly.
	Water has entered motor	Allow to drain and dry. Run in short bursts without load until completely dry.
Motor runs but cable drum does not turn	Clutch (freespool knob) not engaged	Move freespool knob to the "locked spool" position. If problem persists, a qualified technician needs to check and repair.
Motor runs slowly or without normal power	Insufficient current or voltage	The battery is weak, recharge. Run winch with vehicle motor running (battery should have a strong charge).
	Loose or corroded battery cable connections	Clean, tighten, or replace.
Motor overheating	Winch running time too long	Allow winch to cool down periodically.
Motor runs in one direction only	Defective or stuck contactor	Tap contactor to loosen contacts.
		Repair or replace contactor.
	Defective switch assembly	Replace switch assembly.

NOTE

For further technical support, contact our help line at **1-877-956-5746**.



Five Year Mechanical Limited Warranty and Three Year Electrical Limited Warranty

From the original purchase date, Kolpin Powersports warrants to the original purchaser the mechanical components of the winch will be free of defects in material and workmanship for a period of 5 years and the electrical components will be free of defects in material and workmanship for a period of 3 years.

This warranty does not apply to wire rope, synthetic rope or parts that have been damaged by accident, misuse, alteration, improper service, normal wear or causes beyond the manufacturer control.

To obtain warranty service, call 1-877-956-5746 to request a Return Merchandise Authorization (RMA) number and shipping details. This warranty does not cover removal or reinstallation labor fees of the winch. All transportation cost of submitting product to Kolpin for warranty consideration are the responsibility of the shipper.

Kolpin Outdoors, Inc.
Telephone: (763)-478-5800
Toll Free: (877)-956-5746
Fax Number: (800)-245-7569
www.kolpin.com
customerservice@kolpin.com