

## DELUXE BED (AC59004)



OPERATING INSTRUCTIONS & SERVICE MANUAL



## INDEX

• Specifications	1
• Important Safety Precautions	2
• Operating Instructions	3, 4
• Optional Extras (Meal Tray & Footrest)	5
• Air System	6
• Service & Maintenance	7
• Warranty / Service Contract	8

## SPECIFICATIONS

MAXIMUM USER WEIGHT:	180kg
DIMENSIONS:	Back Width: 710mm (Outside), 460mm (Inside) Seat Width: 690mm (Outside), 510mm (Inside) Sitting Length: 1040mm Back Height: 710mm
GROSS WEIGHT OF BED:	45kg
CONSTRUCTION:	Mild steel framework, patented Air Comfort Seating System, Foam & Poly Urethane & Vinyl cover.
FINISH:	Chrome plated
GAS STRUTS:	2 x 100 / 300n, 1 x 150 / 200n
CASTORS:	Ø150mm grey rubber swivel castors (3 Full lock, 1 Directional)
OPTIONS:	Meal Tray (AO59011) Foot Rest (AO59001) IV Pole (IVPOLE)

## IMPORTANT SAFETY PRECAUTIONS

- This product has been designed and manufactured with safety and function for both the user and the operator as the utmost importance. The recommended max load capacity for this product is 180kg.
- Operators must read and follow the manual to ensure all safety precautions are not compromised.
- For safety when lowering the product to its lowest position, the operator should ensure any obstructions are removed from behind.
- For safety when side transferring a patient on / off the product, the operator must ensure that the castors have been locked
- Never have any loose objects in the vicinity of the product when using any of the functions, as these may obstruct, hinder or damage the moving components of the product. Always check the surrounding area and under the bed for objects that may be crushed with any movement of the product.
- Do not use as a CPR Bed.
- When not in use, leave the product in the upright position.
- Follow the maintenance instructions.
- Follow the cleaning instructions.

## SET UP INSTRUCTIONS

The product is delivered fully assembled and ready for use however inspect the product before use.

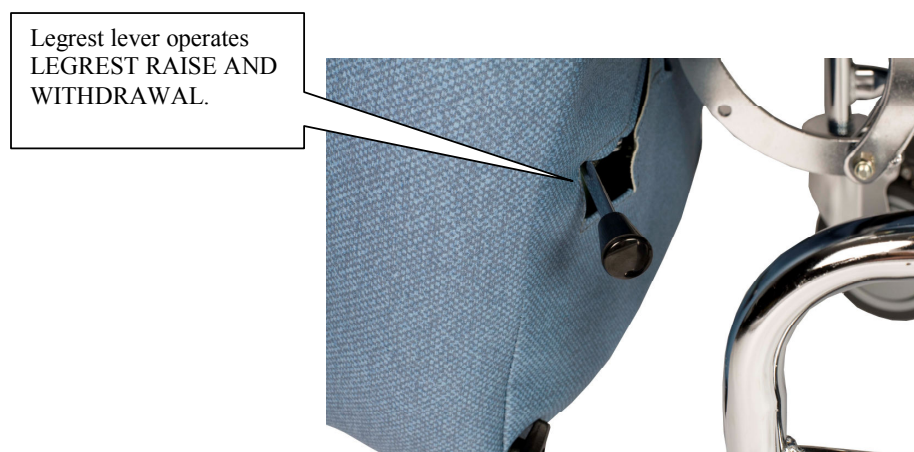
# OPERATING INSTRUCTIONS

## Positioning

The Air Comfort Deluxe Bed (AC59004) is fitted with three gas struts. Using the brake levers, this allows the carer to manipulate the back recline, seat tilt and leg rest into any number of positions to suit the patient's needs.

Positions are adjusted by squeezing and holding the brake lever. Maneuver the angle to the desired position, and then release the brake. The gas strut will automatically lock back into position.

- Left brake handle (Labeled BACK) operates the **angle of the back** from vertical (seated) to horizontal (Laying down).
- Right brake handle (Labeled SEAT) operates the **tilt of the seat** from roughly horizontal to 45 degrees tilted back.
- Legrest handle (Underneath legrest, right hand side facing) operates the **legrest** to desired position.



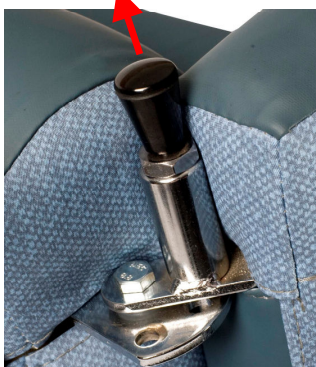
## Drop down arms or wings.

The Deluxe Beds are fitted with drop down arms and wings for patient transfers, and other specialised patient needs.



Pull the spring-loaded pin at the top of the wing, and move the wing to one of four locations to adjust the position. The pin will spring back into the hole, locking the wing into the desired position. Fully opened is positioned for side transfers.

Pull the spring-loaded pin at the bottom of the arm, and move the arm to the drop down position to adjust. When the arm is lifted back into the raised position the spring-loaded pin will automatically lock into place.



**Note: Gently push the arm / wing in towards the seat to take pressure off the pin when adjusting.**

## Castors

All Air comfort Beds and chairs are fitted with three swivel full locking castors and one swivel directional locking castor. The directional locking castor can be identified by a **black** locking pedal, while the three Full lock castors can be identified by the **grey** locking pedal. To lock the castors simply push the pedal to the down position. Lift the pedal to release the lock. When engaged the directional lock castor will lock the wheel straight. This can assist when manoeuvring the chair in a straight direction.

Directional  
Locking Castor.

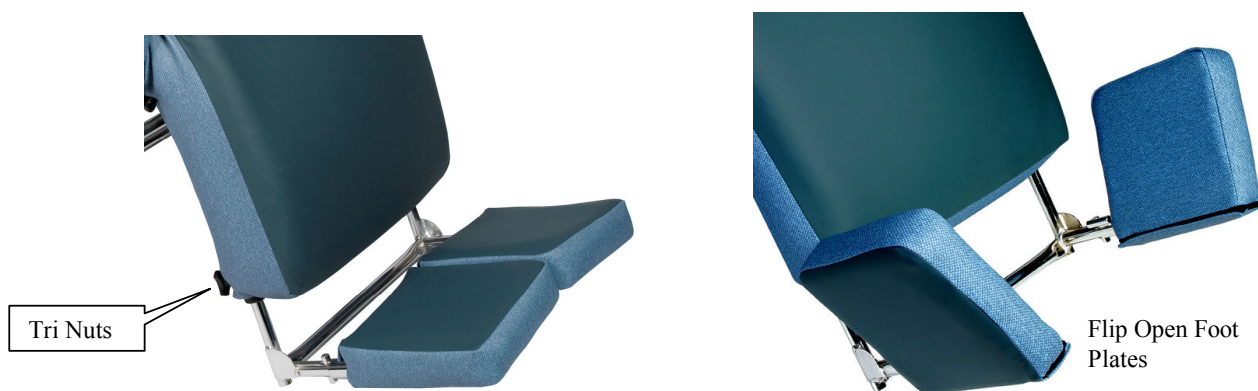


Full Locking  
Castor.

## OPTIONAL EXTRAS

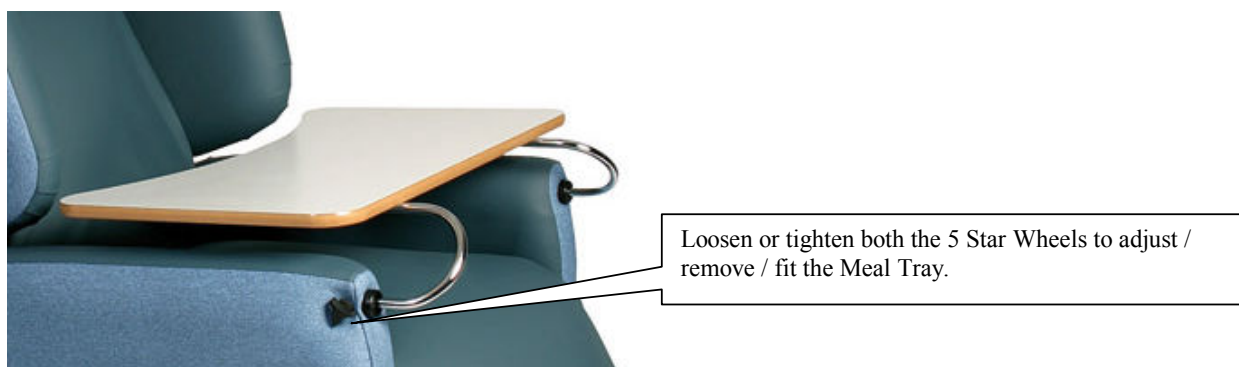
### Footrest

All Air Comfort Day Chairs can be fitted with a footrest. The footrest has a trombone action that can be adjusted to suit the patient's needs. There are two Tri Nuts under the front of the leg rest. Turn the Tri Nuts anti-clockwise to loosen the footrest, and then move the footrest into position before again tightening into place. The footplates can also be flipped up to a vertical position to allow easier access for a patient.



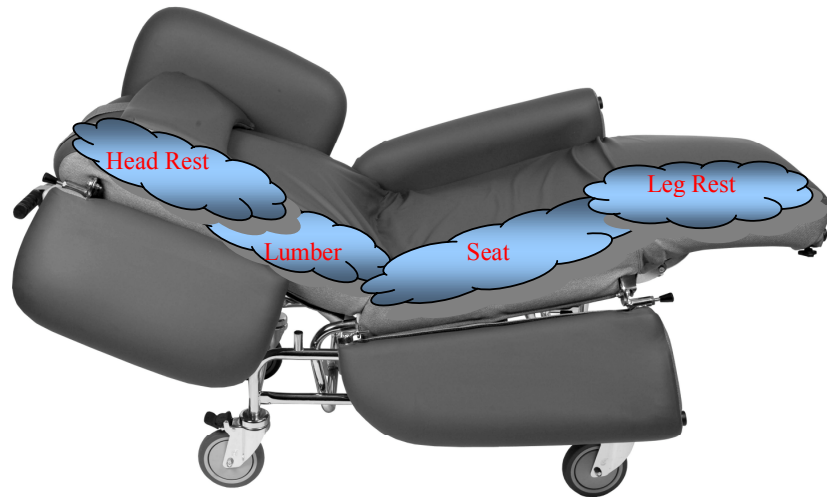
### Meal Tray

All Air Comfort Day Chairs can also be fitted with a meal tray. Loosen the tri-nuts on the outside of the arms to move the meal tray into position, before tightening the tri-nuts to ensure the tray doesn't slip. Ensure the bed is in the seated and upright position before using the meal trays. Adjusting the tilt or backrest function while a meal tray is fitted can be dangerous for the patient.





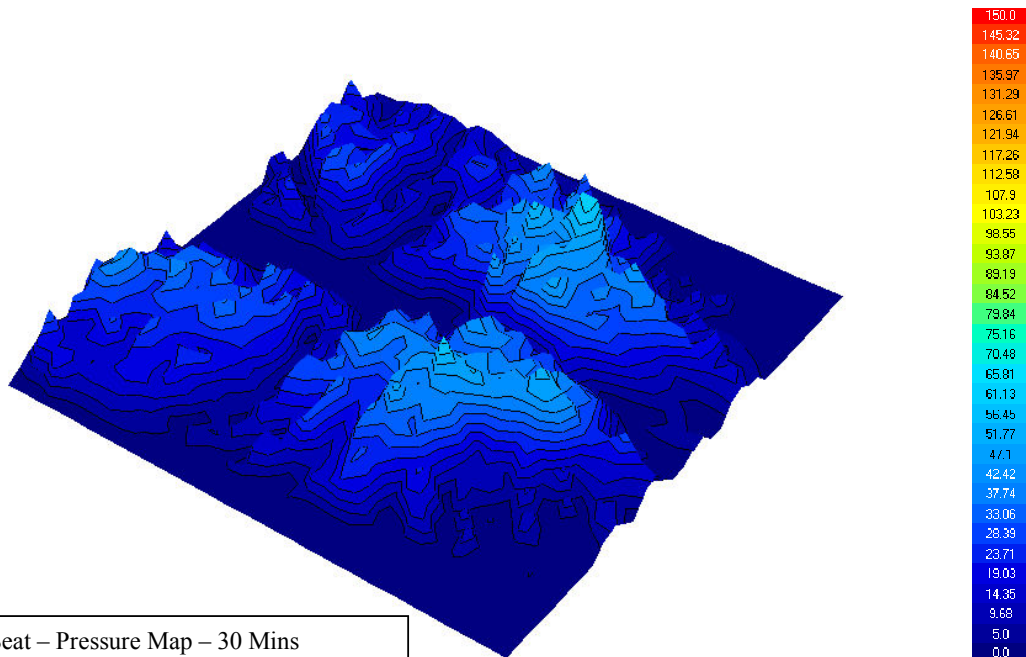
# AIR SEATING SYSTEM



The Exclusive Air Comfort Seating System is comprised of four separate Air Bladders, each overlapping each other to provide complete head to toe pressure relief and superior comfort. Each Bladder is filled with a specifically calibrated low level of air to ensure maximum pressure relief for the average patient.

There should be no need to adjust the level of air or access the bladders unless at the direction of a Clinician to fulfill a specific clinical need or if there appears to be a fault.

All Air Comfort models are extensively pressure mapped during research and development to identify the ideal air levels, construction and materials.



Deluxe Bed Seat – Pressure Map – 30 Mins  
Measurement - mmHg



# SERVICE & MAINTENANCE

## Maintenance and Cleaning

### 1. Cleaning Instructions

- **Material:** Please follow fabric-cleaning instructions located on the back of the headrest.
- **Frame:** All exposed metal framing should be cleaned regularly, at least every three months, depending on usage. This should be done with a damp cloth before being wiped dry.
- **Gas Springs:** Gas springs will attract grim so it is important to maintain them to ensure maximum efficiency and increase the working life of the spring. Wipe them over with a damp cloth, and then wipe them dry. The push rod should also be oiled to keep the seal in good condition.

## Common Service Concerns

1. **Gas Springs don't work.** It is best not to attempt to adjust the gas springs or brake cables. If you feel the unit is not operating correctly, first contact the distributor to make them aware of your concern. Brake cables and gas springs can be replaced if they have been damaged, or if there is a manufacturing fault.
2. **There isn't enough air in the seat.** If you are unfamiliar with the Air system, it may appear that there is not enough air in the air bags. The air bladders are designed to work together as a unit. When the patient is in the seat they will displace the small amount of air throughout the bladders to create a thin layer of air cushioning. Do not add air to the bladders before first consulting the store or the manufacturer. If you believe one of the air bladders has deflated, un-velcro the cover on the side of the seat to access and carefully remove the problem bladder. Examine the bag and the valve for obvious punctures or any sign of damage, particularly along the welds. To test for a leak, inflate the bag (making sure the valve is then properly secured) and leave it aside for several hours or overnight to see if it deflates of its own accord. If the bladder shows signs of leaking air, a new bladder can be sourced through the distributor from whom the unit was purchased. Should you wish to repair the air bladder onsite, puncture kits available. Follow the instructions on the puncture kits for repairing the leak.
3. **The seat area has collapsed.** Do not be alarmed when the seat settles into its natural shape. The seat should look concaved after some time as the foam settles. **This does not necessarily indicate that the air bladders are faulty.** Sit in the unit and you will find that the cushioning is unchanged, or in fact improved. The concave shape has the added benefit of helping to prevent the patient from slipping forward without being uncomfortable. If you still feel the air bladder has a leak, follow the steps outlined in point 2 above.

# WARRANTY / SERVICE CONTRACT

## Warranty

Frame	10 Years
Foam	5 Years
Gas struts	1 Year
Air Bags	2 Years
Castors	2 Years
Fabric	Manufacturers
Workmanship	2 Years

\* Conditions Apply. See Warranty for further details

## Service contract

A Hills Healthcare Technical Representative should service the product annually. Please contact your place of purchase for warranty claims or service contract enquires.  
We appreciate any feedback regarding Air Comfort products or service.

## Supplied by:



**backcare&seating**

BACKCARE & SEATING

ADDRESS: 4 Guilfoyle Avenue, Coburg North VIC 3058 Australia

PHONE: 03 9353 0517

info@backcare.com.au

www.backcare.com.au