



1. Technical Specifications

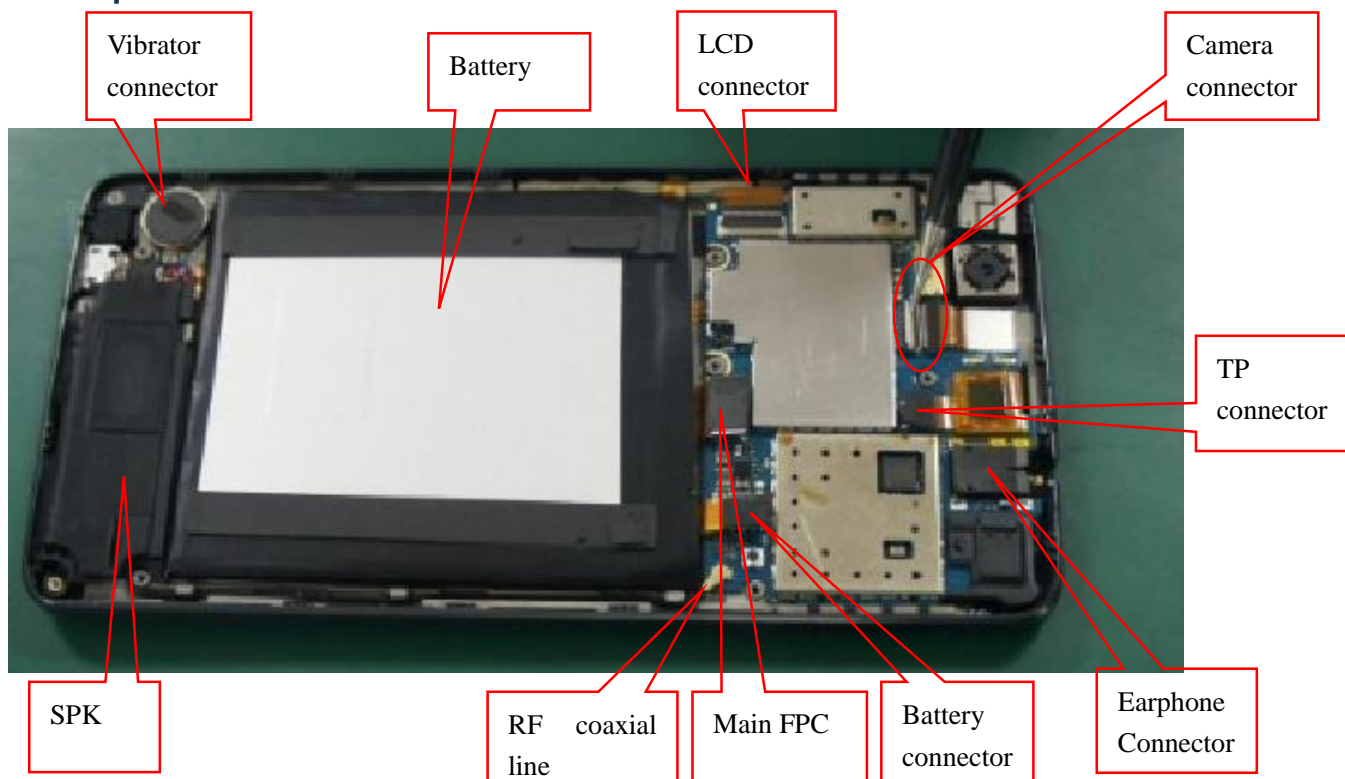
Particular	Remarks
Key Matrix For Flashing	NA
Chipset	MT6592M
Android Version	Android 4.4.2
Frequency	1.4GHz
Network Mode	900MHz/1800MHz/1900MHz/850MHz WCDMA 900MHZ/2100 MHz
ROM	8G
RAM	1G
Internal SD Card memory	5.64G (share with data memory)
Expandable Memory	32G
Factory mode code	Press vol+/ Vol-/ power key at the same time
Good Earpiece volume	$32\Omega \pm 15\%$
Good Loudspeaker volume	$8\Omega \pm 5\%$
Good Mic volume	$2.2k\Omega \pm 5\%$
Good Vibrator volume	$30\Omega \pm 5\%$

2: CAUTIONS

- I. Flashing & Servicing must be undertaken by qualified personnel only.
- II. Ensure all work is carried out at an anti-static workstation and that an anti-static wrist strap is worn.
- III. Use only approved Tools & components as specified in the parts list.
- IV. Ensure all components, modules, screws, and insulators are correctly re-fitted after servicing and alignment
- V. Ensure all cables and wires are repositioned correctly if Handset disassembled
- VI. Electrostatic discharge can easily damage the sensitive components of electronic products. Therefore, Service Centre must adhere the precautions which mentioned above.

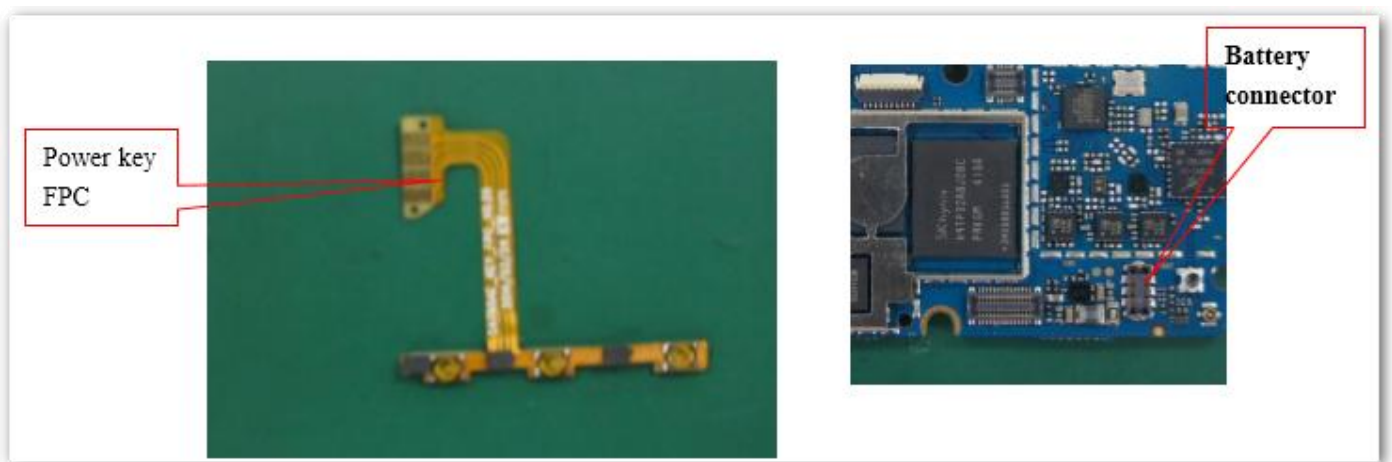
3: Service Details

Main Components



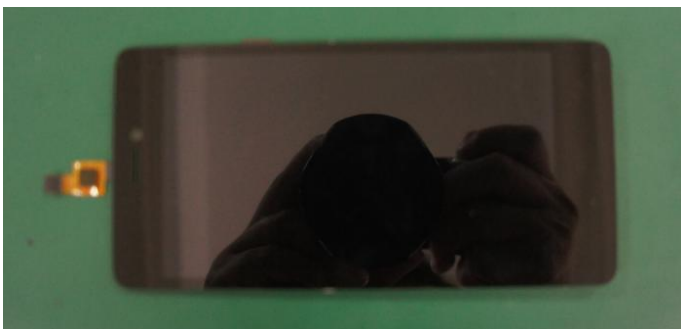
1. Does not power on

S.NO	Possible Cause	Validation steps	Action
1	NO power on	Power on key is fail	Change keys
2	Battery capacity level is too low	Battery capacity	Charging the tablet
		Sw issue	Flash the handset with latest SW
		PCBA faulty	Replace PCBA / Refer L3 Repair



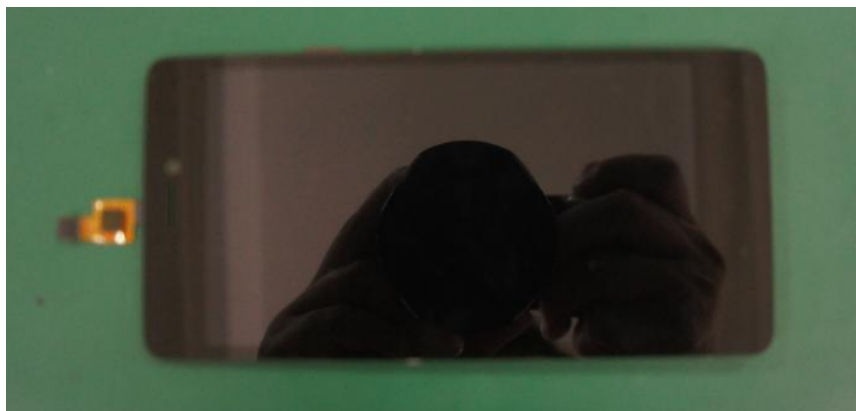
2. Display issue/No display

S.NO	Possible Cause	Validation steps	Action
1	No display	Sw issue	Flash the handset with latest SW
		LCD fail	Change LCD
		PCBA fail	Change PCBA
2	Colored screen	LCD fail	Change LCD
3	Dark screen	LCD fail	Change LCD
		Sw issue	Flash the handset with latest SW
		LCD backlight circuit issue	Change PCBA
		LCD backlight is set too low by person	Reset the value of backlight



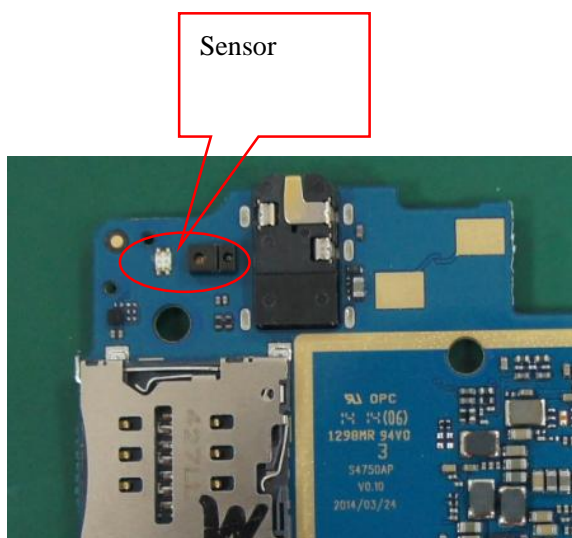
3. Touch panel

S.NO	Possible Cause	Validation steps	Action
1	TP not working	SW Issue	Flash the handset with latest SW
		TP issue	Charge TP
		TP connection issue	Assemble TP again
		PCBA issue	Refer to L3 repair
2	TP not working proper	TP issue	Charge TP
		PCBA issue	Refer to L3 repair



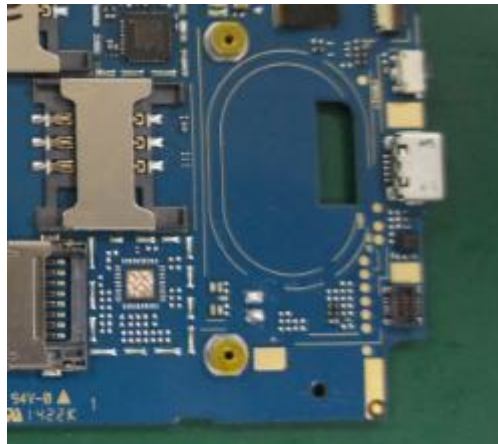
4. Proximity Sensor

S.NO	Possible Cause	Validation steps	Action
1	Proximity sensor fail	SW Issue	Flash the handset with latest SW
		Sensor holder is not assembled well	Re-assemble the sensor holder
		PCBA issue	Change PCBA



5. G-sensor

S.NO	Possible Cause	Validation steps	Action
1	G-sensor is not working	SW Issue	Flash the handset with latest SW
		Set problem	Reset mobile
		PCBA issue	Change PCBA



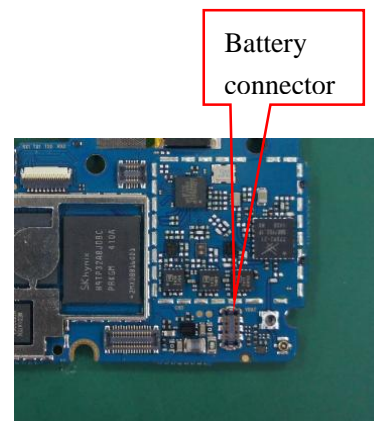
6. Keys

S.NO	Possible Cause	Validation steps	Action
1	Key is not response	Key is fail	Change Keys FPC
2	The feeling of pressing key is bad	Key is fail	Change Keys FPC
		Key is not assembled well	Re-assemble



7. Charging

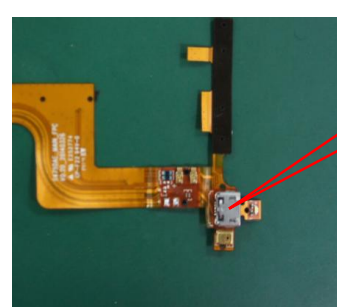
S.NO	Possible Cause	Validation steps	Action
1	Cannot charge into	Adapter is fail	Change adapter
2	Have charging icon, but not charged	SW Issue	Flash the handset with latest SW
		PCBA fail	Change PCBA
		Battery fail	Change battery
		Battery connector issue	Change battery connector



Battery
connector

8. USB

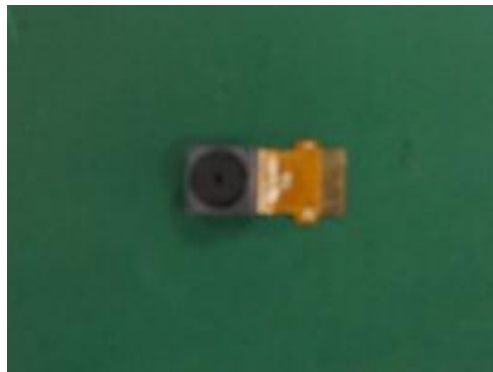
S.NO	Possible Cause	Validation steps	Action
1	Cannot connect to PC	USB cable is fail	Change USB cable
		Main FPC fail	Change Main FPC having I/O connector
		PCBA fail	Change PCBA



I/O
connector

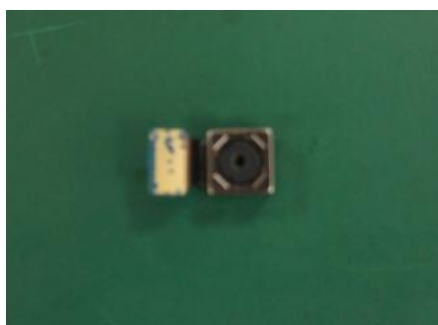
9. Front Camera

S.NO	Possible Cause	Validation steps	Action
1	Colored screen when open front camera	Camera is fail	Change camera
		PCBA fail	Change PCBA
2	Cannot turn on front camera	Sw issue	Flash the handset with latest SW
		Camera fail	Change camera
		PCBA fail	Change PCBA



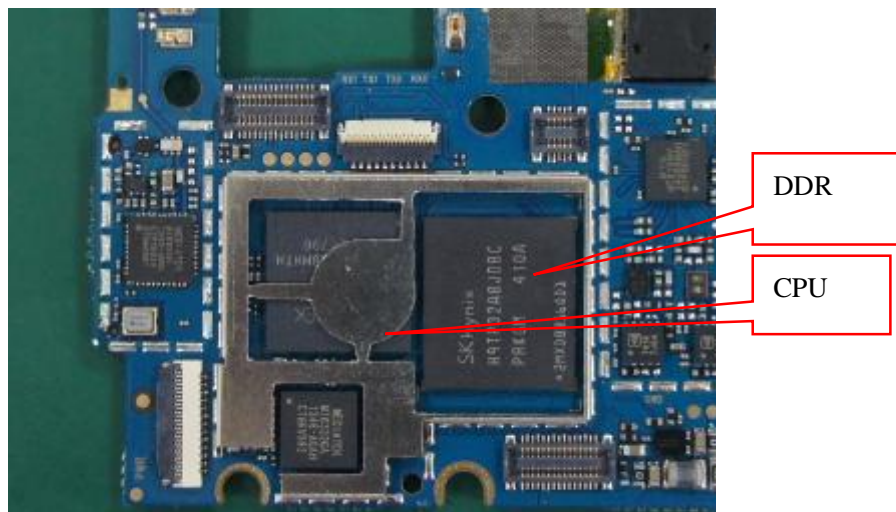
10. Rear Camera

S.NO	Possible Cause	Validation steps	Action
1	Colored screen when open front camera	Camera is fail	Change camera
		PCBA fail	Change PCBA
2	Cannot turn on front camera	Sw issue	Flash the handset with latest SW
		Camera fail	Change camera
		PCBA fail	Change PCBA



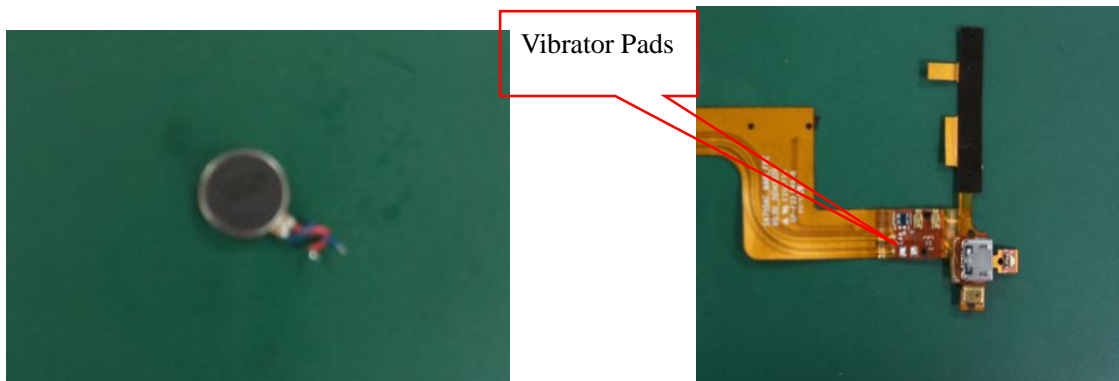
11. Playing Video

S.NO	Possible Cause	Validation steps	Action
1	Hang often	Sw issue	Flash the handset with latest SW
		CPU poor soldering	Refer L3 Repair
		DDR poor soldering	Refer L3 Repair



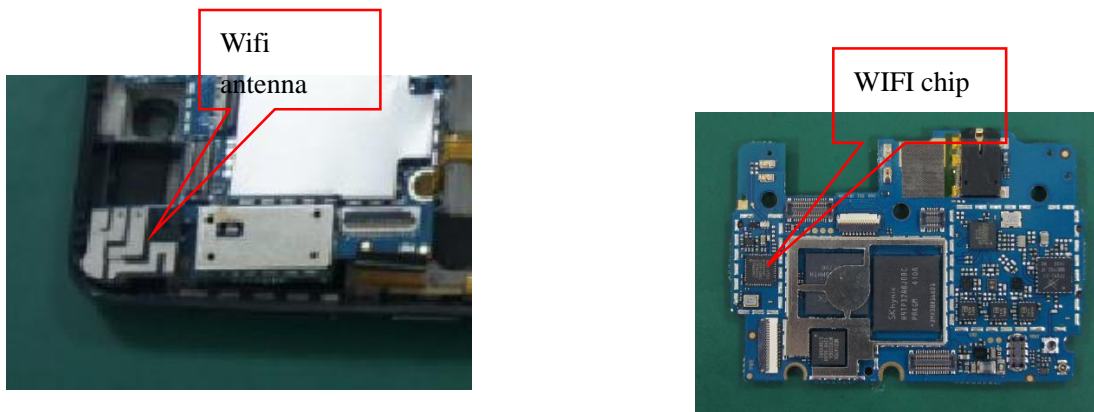
12. Vibrator

S.NO	Possible Cause	Validation steps	Action
1	Vibrating is not properly	Vibrate assemble issue	Re assemble
		Vibrate issue	Change it
2	NO vibrate	Soldering issue	Re soldering it
		Vibrate issue	Change it
		PCBA issue	Refer to L3 service
3	Vibrate weakly	Vibrate issue	Change it



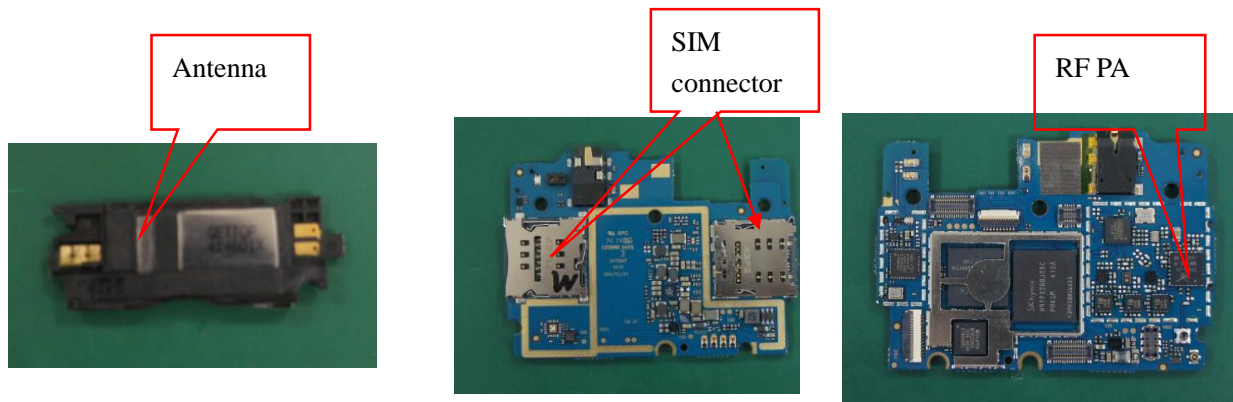
13. WiFi

S.NO	Possible Cause	Validation steps	Action
1	WI-FI not working	Set wifi turn off as default	Reset wifi to turn on wifi
		4 in 1 chip fail	Change PCBA



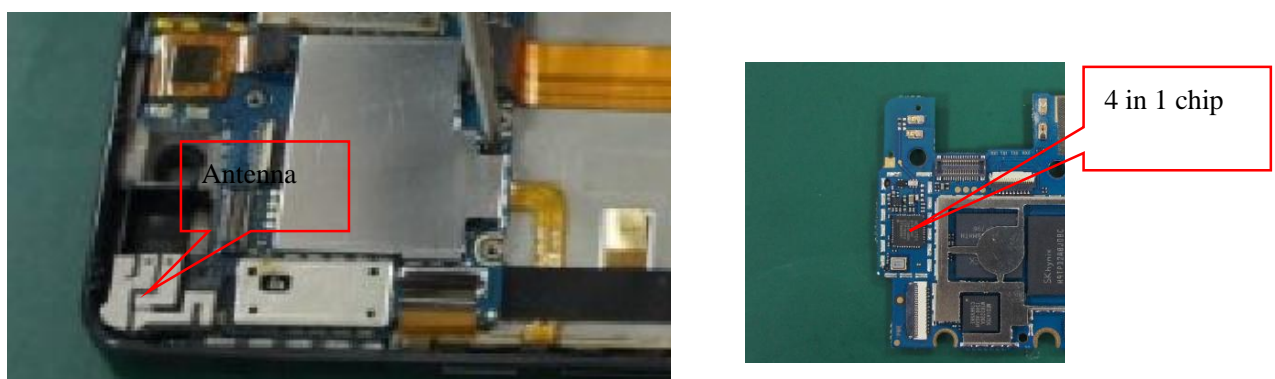
14. RF Network

S.NO	Possible Cause	Validation steps	Action
1	RF Network cannot searchable	RF antenna is fail	Change RF antenna
		SIM socket is fail	Change SIM socket
		PCBA fail	Change PCBA



15. Bluetooth / FM

S.NO	Possible Cause	Validation steps	Action
1	Cannot turn on BT / FM	Sw issue	Flash the handset with latest SW
		PCBA fail	Change PCBA
		BT antenna fail	Change antenna
		4 in 1 chip issue	Change 4 in 1 chip



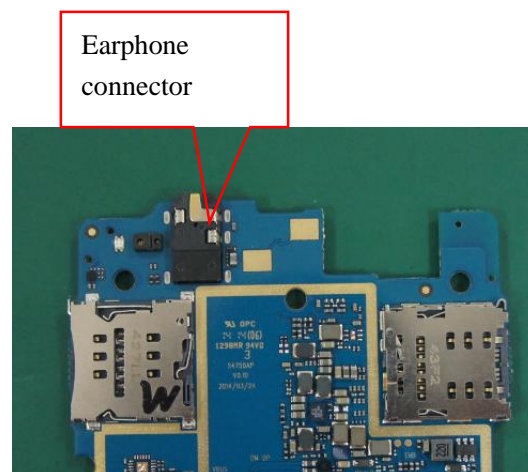
16. Receiver

S.NO	Possible Cause	Validation steps	Action
1	Noise/crack	Dust with receiver	Clean it
		Receiver issue	Change it
2	Noise/volume low	Connection issue	Assemble it
		Receiver issue	Change it



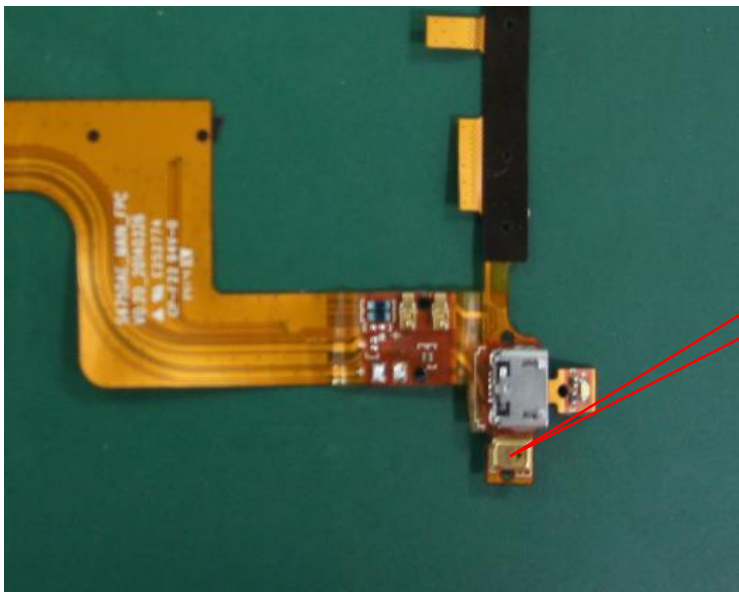
17. Earphone

S.NO	Possible Cause	Validation steps	Action
1	Not working / from earphone	Earphone not detecting	Change earphone connector
		Earphone connector having poor soldering	Change earphone connector



18. MIC

S.NO	Possible Cause	Validation steps	Action
1	Noise with uplink side	Some dust with mic	Clean it
		MIC issue	Change Main FPC
		PCBA issue	Refer to L3 repair
2	Volume low	soldering issue	Change Main FPC
		PCBA issue	Refer to L3 repair
3	No recording	MIC issue	Change Main FPC
		SW issue	Re-install SW
		PCBA issue	Refer to L3 repair



MIC

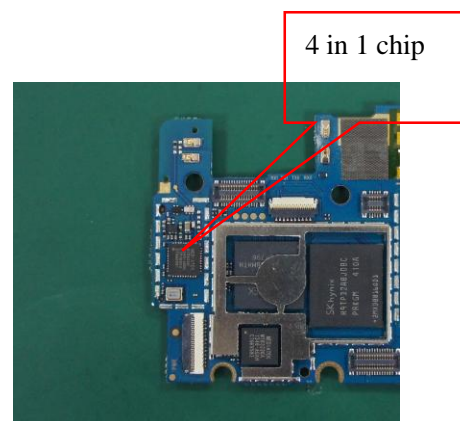
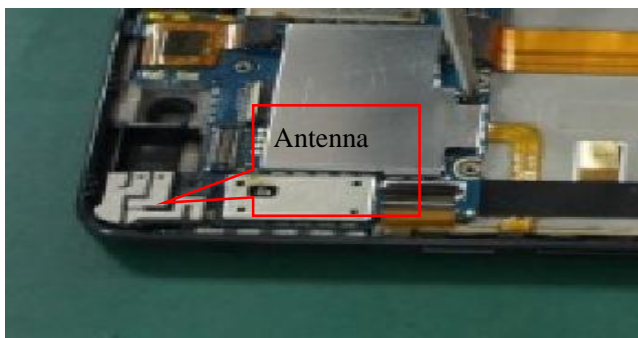
19. Speaker

S.NO	Possible Cause	Validation steps	Action
1	Noise/crack	Speaker with dust	Change speaker
		Speaker foam issue	Change speaker
		Speaker issue	Change speaker
2	No volume	Assemble issue	Assemble again
		Speaker issue	Change it
		Audio PA issue	Refer to L3 repair
3	Low volume	Assemble issue	Assemble again
		Speaker issue	Change it
		Audio PA issue	Refer to L3 repair



20. GPS

S.NO	Possible Cause	Validation steps	Action
1	GPS not connecting	Sw issue	Flash the handset with latest SW
		GPS antenna issue	Change GPS antenna
		4 in chip issue	Change PCBA



21. Battery

S.NO	Possible Cause	Validation steps	Action
1	Show charging but it is not charged	Battery issue	Change battery
		Charging connector issue	Change PCBA
2	No charging	Charging IC issue	Change PCBA
3	Cannot charge fully	Battery issue	Change battery
		Charging IC issue	Change PCBA
		battery connector issue	Change battery connector



Battery
connector

Thanks

For any Query or suggestion, Please write to tech.help@micromaxinfo.com