

**LANCER**

Please refer to the Lancer web site ([www.lancercorp.com](http://www.lancercorp.com)) for information relating to Lancer Installation and Service Manuals, Instruction Sheets, Technical Bulletins, Service Bulletins, etc.

**INSTALLATION AND SERVICE MANUAL**  
**FOR**  
**MDS - 8000**  
**MODULAR DISPENSING SYSTEM**



***This Manual supersedes Installation and Service Manual 28-0621/03, dated 07/31/97.***

**LANCER**

6655 LANCER BLVD. • SAN ANTONIO, TEXAS 78219 USA • (210) 310-7000

FAX SALES

• NORTH AMERICA – 210-310-7245 • INTERNATIONAL SALES – 210-310-7242 • CUSTOMER SERVICE – 210-310-7242 •  
• LATIN AMERICA – 210-310-7245 • EUROPE – 32-2-755-2399 • PACIFIC – 61-8-8268-1978 •

FAX ENGINEERING: • 210-310-7096

"Lancer" is the registered trademark of Lancer • Copyright — 1999 by Lancer, all rights reserved.

DATE: 03/10/99  
P.N. 28-0621/04

<b>TABLE OF CONTENTS</b> .....	i
<b>1. INSTALLATION</b> .....	<b>1</b>
1.1 COUNTER SELECTION .....	1
1.2 PROVIDING CLEARANCE .....	1
1.3 WATER REQUIREMENTS .....	1
1.4 CARBON DIOXIDE (CO <sub>2</sub> ) REQUIREMENTS.....	1
1.5 ELECTRICAL REQUIREMENTS .....	1
1.6 DRAIN REQUIREMENTS .....	1
1.7 SEALING THE DISPENSER TO THE COUNTER.....	1
1.8 REQUIRED TOOLS FOR INSTALLATION .....	2
1.9 RECEIVING.....	2
1.10 UNPACKING .....	2
<b>2. ASSEMBLING THE DISPENSER</b> .....	<b>2-15</b>
<b>3. ILLUSTRATIONS AND PARTS LISTINGS</b> .....	<b>16</b>
3.1 TEMPLATE, CUTOUT, COUNTER, RH ICE DISPENSER (NO BASE) .....	16
3.2 TEMPLATE, CUTOUT, COUNTER, LH ICE DISPENSER (NO BASE).....	17
3.3 WRAPPER ASSEMBLY .....	18-19
3.4 MARQUEE AND LIGHT BOX ASSEMBLY .....	20-21
3.5 SHROUD ASSEMBLY .....	22-23

## 1. INSTALLATION

### 1.1 COUNTER SELECTION

- A. Select a location close to a properly grounded electrical outlet (see Section 1.5, Electrical Requirements) and water supply that meet the requirements outlined below.
- B. Counter location must be able to support a minimum of 600 pounds (272 kg) per MDS unit.

#### **NOTE**

If two (2) systems are installed, the counter must be able to support 1,200 pounds (544 kg).

- C. Counter cutouts, required for installation of unit, are shown in Sections 3.1 and 3.2. Full size templates are provided with the MDS Kit.

### 1.2 PROVIDING CLEARANCE

#### **WARNING**

**FAILURE TO MAINTAIN PROPER AIR CLEARANCE WILL CAUSE THE COMPRESSOR TO OVERHEAT AND WILL RESULT IN PREMATURE COMPONENT FAILURE.**

Condenser air is drawn in the top front of the unit and discharged out the top back of the unit. A minimum of 15 inches (38.1 cm) clearance must be maintained over the top of the unit.

### 1.3 WATER REQUIREMENTS

#### **CAUTION**

IF WATER SOURCE EXCEEDS 50 PSIG (3.52 KG/CM<sup>2</sup>), A WATER REGULATOR ASSEMBLY MUST BE USED TO LIMIT WATER PRESSURE TO 50 PSIG (3.52 KG/CM<sup>2</sup>). FAILURE TO USE REGULATOR WILL RESULT IN IMPROPER PERFORMANCE OF DISPENSER.

This dispenser incorporates a built-in cold carbonator. There are three (3) water inlets to the dispenser. Two (2) (plain water circuits) supply water to the non-carbonated drinks and one (1) (prechill circuit) supplies the carbonator pump.

- A. Plain Water Circuit Requirements

Minimum flowing pressure of 40 PSIG (2.81 kg/cm<sup>2</sup>, 2.75 BAR).

- B. Prechill Water Circuit Requirements

Minimum flowing pressure of 25 PSIG (1.76 kg/cm<sup>2</sup>, 1.72 BAR).

Maximum static pressure of 50 PSIG (3.52 kg/cm<sup>2</sup>, 4.13 BAR).

### 1.4 CARBON DIOXIDE (CO<sub>2</sub>) REQUIREMENTS

Operating pressure: 75 PSIG (5.27 kg/cm<sup>2</sup>, 5.18 BAR).

### 1.5 ELECTRICAL REQUIREMENTS

#### **WARNING**

**ALL ELECTRICAL CIRCUITS MUST MEET LOCAL BUILDING CODES. EACH DRINK DISPENSER MUST BE SUPPLIED WITH A SEPARATE ELECTRICAL CIRCUIT.**

The drink dispenser must have an independent 115 Volt, 60 Hz, 20 Amp grounded circuit. The ice dispenser should be connected per the manufacturer's recommendations.

#### **NOTE**

The Ice Dispenser Installation Manual can be found in the ice bin.

### 1.6 DRAIN REQUIREMENTS

A drain connection should be located within three (3) feet of the dispenser.

### 1.7 SEALING THE DISPENSER TO THE COUNTER

The equipment should be permanently sealed to the counter using Lancer Sealant (PN 15-0010), or equivalent.

## 1.8 REQUIRED TOOLS FOR INSTALLATION

The following tools will be required for installation:

- A. Screw Driver, Flat Head
- B. Screw Driver, Phillips Head
- C. Wrench, 7/16 inch
- D. Beverage Tubing Cutter
- E. Oetiker Clamp Crimper

## 1.9 RECEIVING

Each kit is thoroughly inspected before shipment. At time of shipment, the carrier accepts the unit(s) and any claim for damages must be made with the carrier. Upon receiving unit(s) from the delivering carrier, carefully inspect carton(s) for visible indication(s) of damage. If damage exists, have carrier note same on bill of lading and file a claim with the carrier.

## 1.10 UNPACKING

- A. Carefully cut steel band and remove.
- B. Remove top portion of carton by lifting up.
- C. Remove accessory kit and loose parts from top packaging.
- D. Remove top inner carton, pad and corners.
- E. Using proper lifting techniques, lift unit up by plywood shipping base, and remove lower portion of carton.
- F. Inspect unit for concealed damage. If evident, notify delivering carrier and file a claim against same.
- G. Remove plywood shipping base from unit by locating unit so that one side is off the counter top or table, allowing access to screws on the bottom of the plywood shipping base.

### **NOTE**

If unit is to be transported, it is advisable to leave unit secured to plywood shipping base.

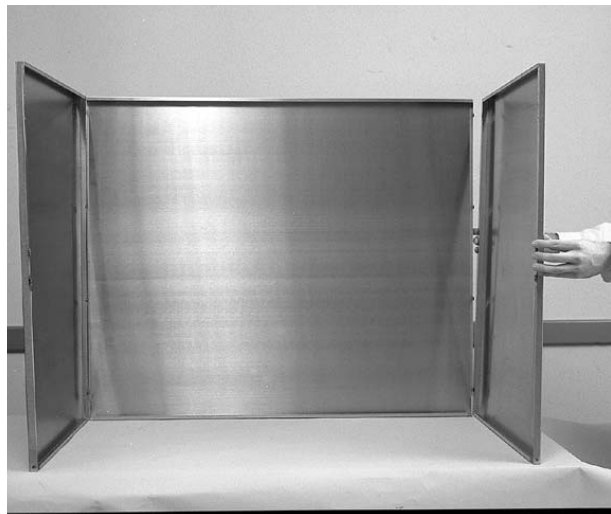
## 2. ASSEMBLING THE DISPENSER

### STEP 1

- A. To form the outer shell of the dispenser, position the left panel next to the back panel. Carefully align the clips on each panel (see photo 1). Lift the left panel slightly and drop onto back panel so that clips mate. Repeat the procedure to attach the right panel to the back panel (see photo 2).

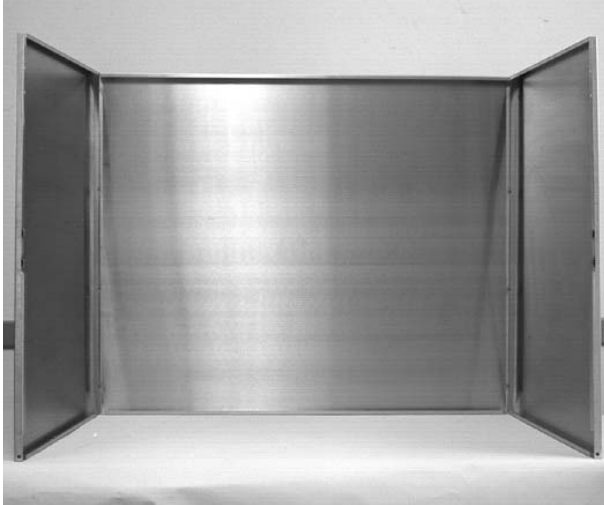


**Photo 1**



**Photo 2**

- B. Prior to attaching the base plate to the partially completed shell, ensure that the left and right panels are slightly spread open (see photo 3) to accommodate the base plate. Carefully align the base plate to the side and back panels (see photo 4).
- C. Secure the base plate to the panels with two screws (see photo 5) at the bottom, front of the left and right hand panels.



**Photo 3**



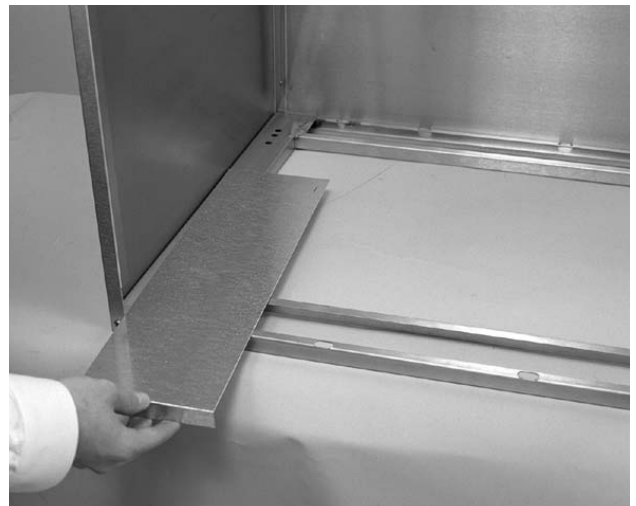
**Photo 4**

## **STEP 2**

- A. Place the two (2) “sliders” into temporary positions on the base plate (see photo 6). The purpose of the sliders is to ease the installation of the dispenser unit into the frame. This will keep the screw heads on the bottom of the dispenser from prematurely seating into the holes on the base plate, until the proper time for final alignment.
- B. The sliders will be removed in a following step.



**Photo 5**



**Photo 6**

**STEP 3**

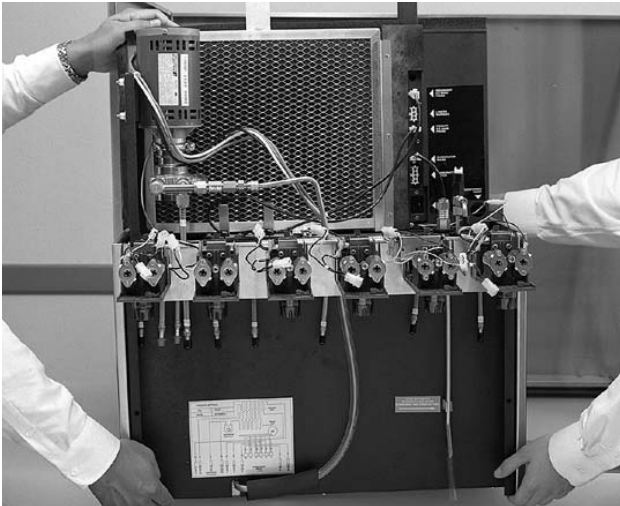
- A. Position the Dispenser unit near the dispenser shell. Due to the weight of the dispenser, it is recommended that two persons lift the dispenser into the shell.

**STEP 4**

- A. Using proper lifting techniques, carefully lift the dispenser (see photo 7) and place into the shell.
- B. Insuring that the two sliders remain aligned, slide the dispenser unit into the shell.

**STEP 5**

- A. Lifting the dispenser unit slightly, carefully pull the “sliders” out of the shell (see photo 8).
- B. Slightly joggling the dispenser unit, insure that the screw heads on the bottom of the dispenser have properly aligned and seated into the holes on the base plate.
- C. Save the “sliders” with the shipping carton in the event that the dispenser unit needs to be removed and reinstalled.



**Photo 7**



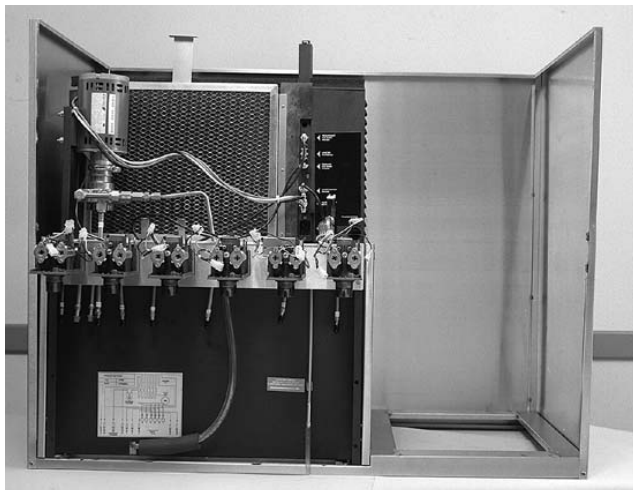
**Photo 8**

**STEP 6**

- A. Prepare the ice dispenser unit for installation into the shell of the dispenser. Please note, in photo 10, that the water bracket has been attached with four (4) screws.

**STEP 7**

- A. Using proper lifting techniques, lift the ice dispenser into the shell (see photo 10).



**Photo 9**



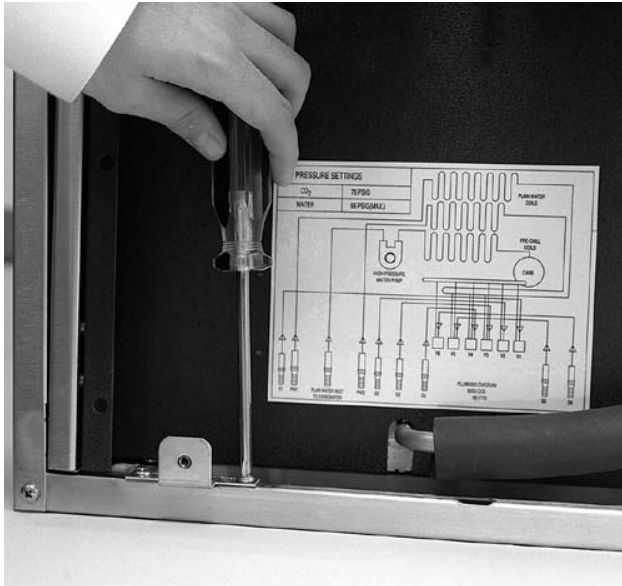
**Photo 10**

**STEP 8**

- A. Install splash plate bracket (see photo 11).

**STEP 9**

- A. Lift the bonnet to the top of the dispenser unit and align this part to the top of the dispenser (see photo 12).



**Photo 11**



**Photo 12**



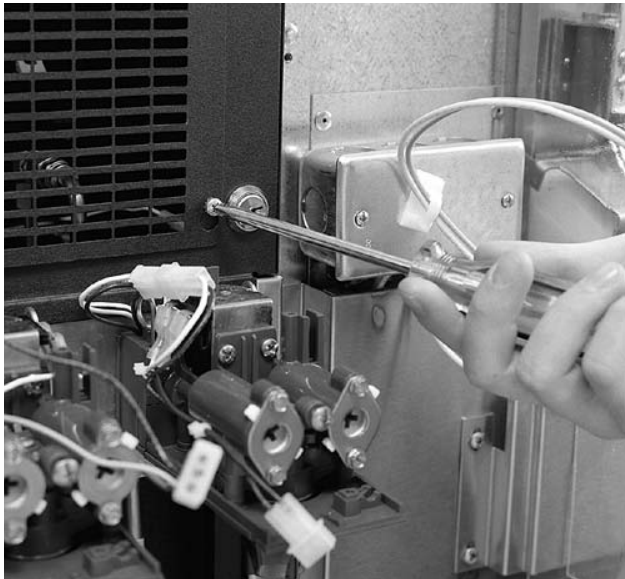
**Photo 13**

**STEP 10**

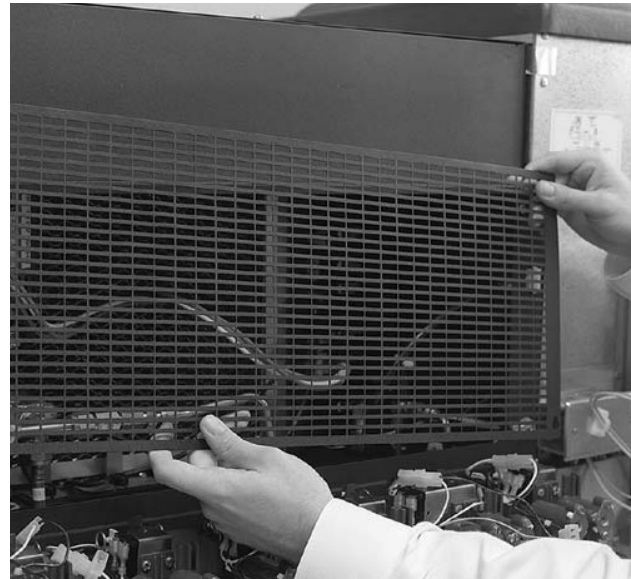
- A. *Loosen but do not remove* the four (4) screws securing the front plate (see photo 14).

**STEP 11**

- A. Remove the front plate from the notches (see photo 15).



**Photo 14**



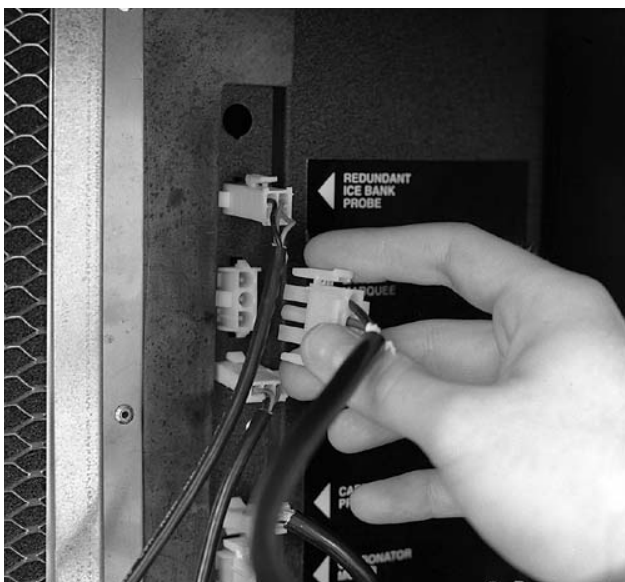
**Photo 15**

**STEP 12**

- A. Connect wiring harness from the bonnet to the “AC” outlet (see photo 16) identified on the dispenser unit.

**STEP 13**

- A. Plug in wiring harness to the key lock (see photo 17).



**Photo 16**



**Photo 17**



#### STEP 14

- A. Install front support (see photo 18). Secure with six (six) screws by installing the first two screws in the top positions (see photo 19).



**Photo 18**



**Photo 19**

#### STEP 15

- A. Install marquee gas shocks (left and right) (see photo 20). Secure each to bracket with one (1) shoulder screw each.
- B. At this time, securely tighten the six (6) screws from the preceding step, securing the front support to the bracket. *Insure that the bracket and the front support are evenly aligned.*

#### STEP 16

- A. Install gas shocks (left and right) which will hold the light box (see photo 21). Secure each to bracket with one (1) shoulder screw each.



**Photo 20**



**Photo 21**

**STEP 17**

- A. Install the light box by very carefully dropping and sliding it onto the brackets (see photo 22).

**STEP 18**

- A. Install two (2) hinge retainers (see photo 23).
- B. Secure each hinge retainer with two (2) screws (see photo 24).



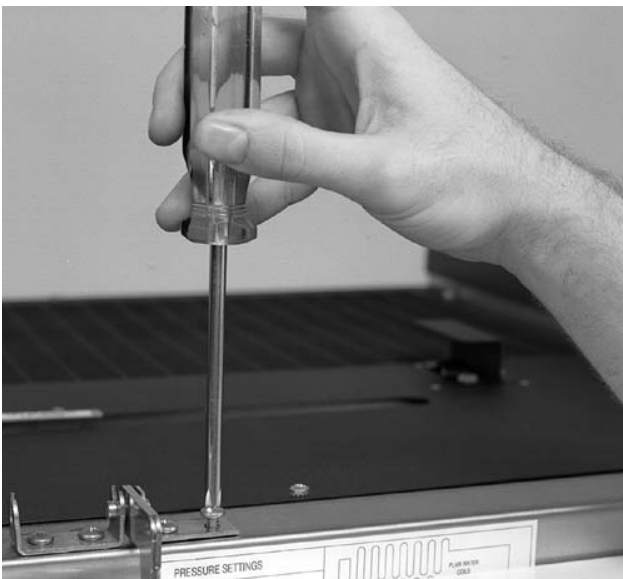
**Photo 22**



**Photo 23**

**STEP 19**

- A. Secure left and right gas spring supports to light box using one (1) shoulder screw for each side (see photo 25).



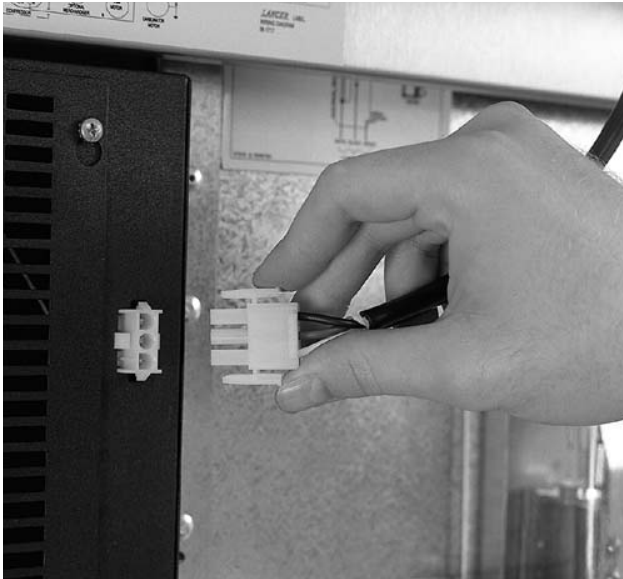
**Photo 24**



**Photo 25**

**STEP 20**

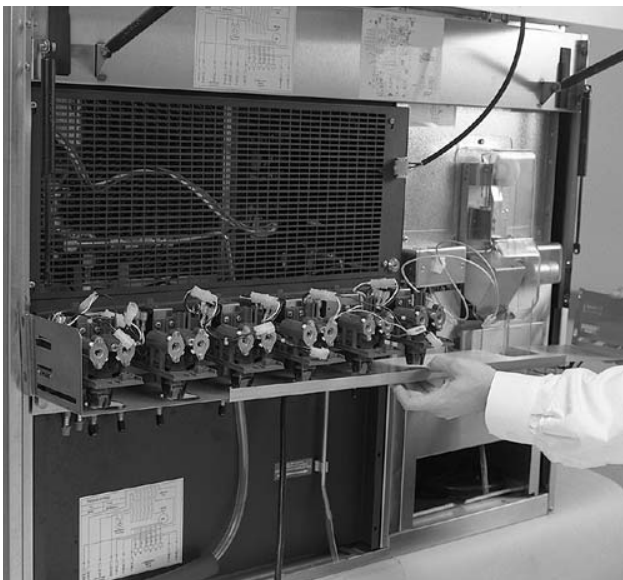
- A. Plug in wiring harness for light box to the dispenser front plate cover (see photo 26).



**Photo 26**

**STEP 21**

- A. Install bottom valve shroud bracket (see photo 27).  
B. Secure with four (4) screws, two (2) at each end of the shroud (see photo 28). *At this time, screws should only be finger snug as the shroud and screws will be adjusted in a later step.*



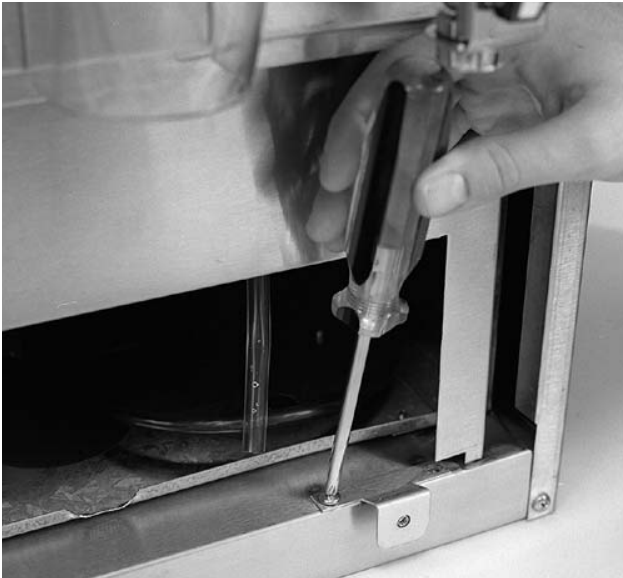
**Photo 27**



**Photo 28**

## STEP 22

- A. Install right hand (RH) splash plate bracket to dispenser (see photo 29). Secure with two (2) screws.



**Photo 29**

## STEP 23

- A. Install shroud assembly for valves (see photo 30).
- B. Attach shroud assembly with two (2) shoulder bolts (see photo 31).
- C. With the shroud open, install left and right latch pins. (see photo 32 and 33, next page.)



**Photo 30**



**Photo 31**



**Photo 32**



**Photo 33**

**STEP 24**

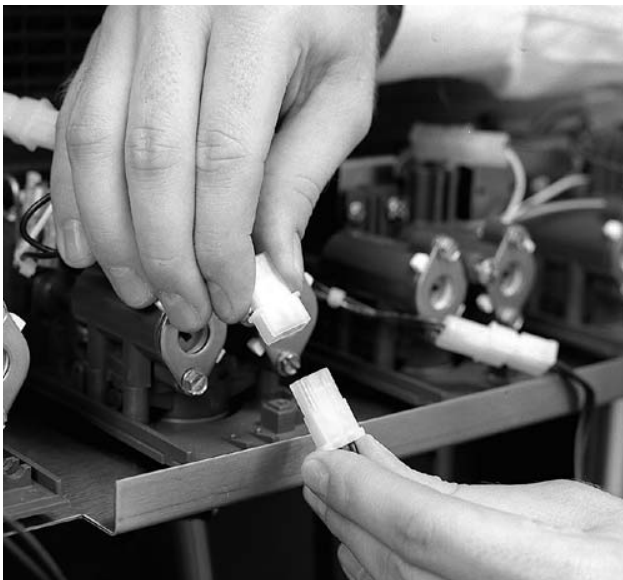
- A. Connect wiring harnesses to each of the six (6) valves (see photo 34).
- B. Connect wiring harness to the ice dispenser.

**NOTE:**

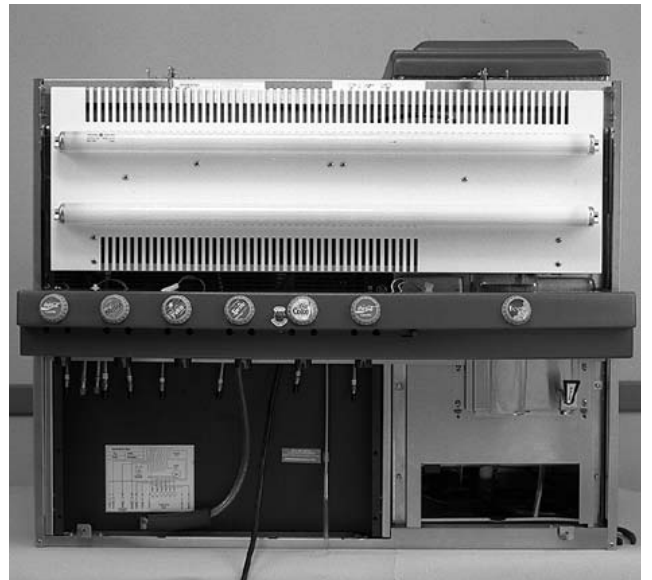
Ensure wiring harnesses are properly connected.

**STEP 25**

- A. Close valve shroud (see photo 35).



**Photo 34**



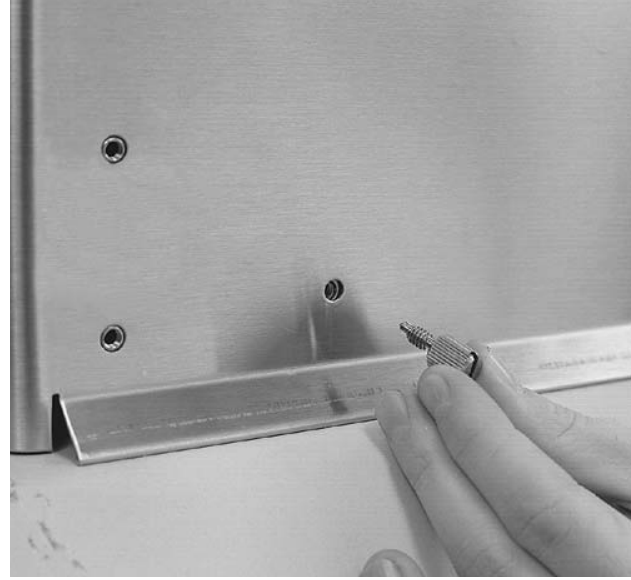
**Photo 35**

**STEP 26**

- A. Install splash plate to unit by sliding it up and inserting it into tabs at the top (see photo 36).
- B. Secure with two screws (see photo 37). Handtighten screws only at this step.



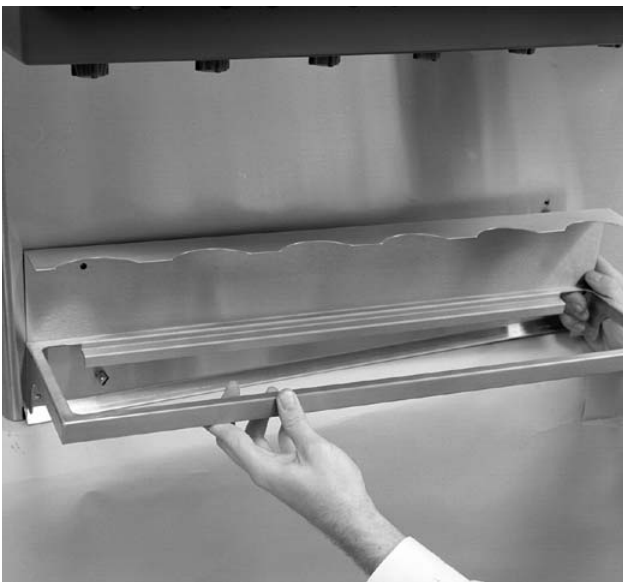
**Photo 36**



**Photo 37**

**STEP 27**

- A. Install cup rest to splash plate (see photo 38 and 39). Secure with six (6) screws.



**Photo 38**



**Photo 39**

**STEP 28**

- A. Install cup rest (see photo 40).



**Photo 40**



**Photo 41**

**STEP 29**

- A. Attach marquee to brackets (see photo 42).



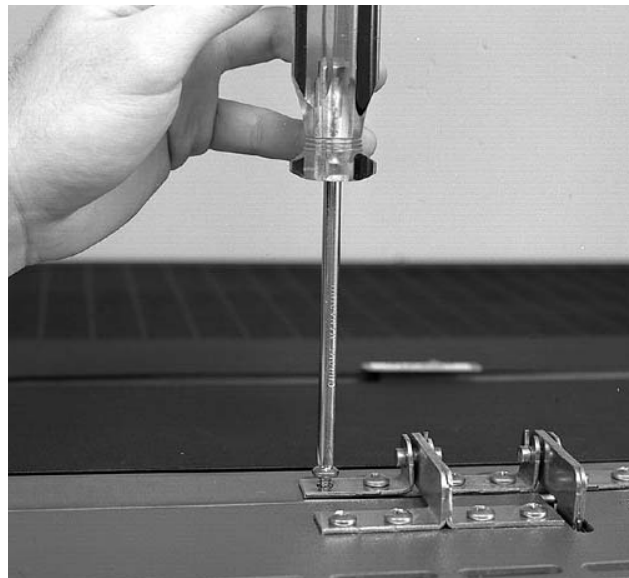
**Photo 42**

**STEP 30**

- A. Install hinge retainers to secure marquee to brackets (see photo 43 and 44).



**Photo 43**



**Photo 44**

**STEP 31**

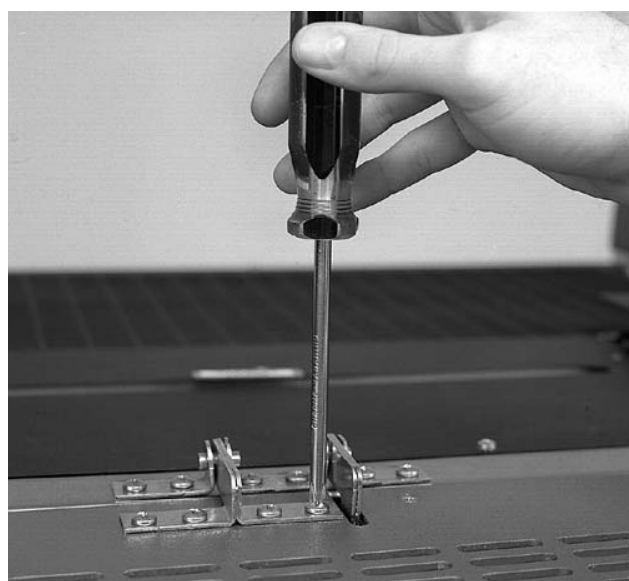
- A. Attach marquee to gas shocks (see photo 45).
- B. Close marquee.

**STEP 32**

- A. Slightly loosen the screws securing the marquee (see photo 46).
- B. The marquee should self-align.
- C. Secure screws attaching the marquee.



**Photo 45**



**Photo 46**



**STEP 33**

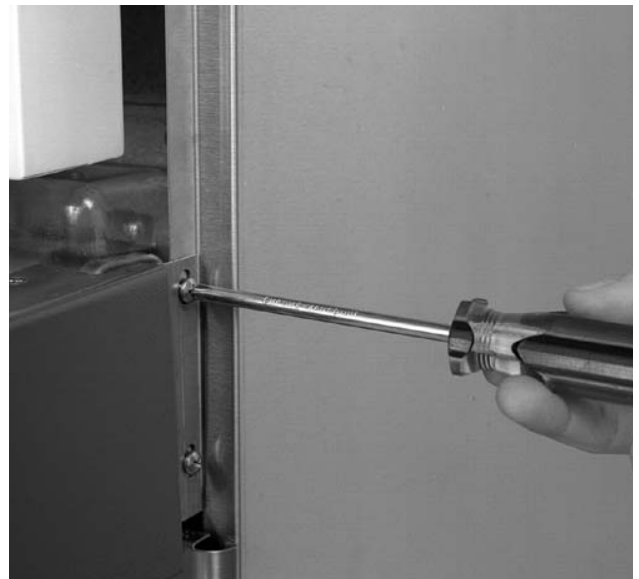
- A. Lift latch (both sides) to unlock valve shroud (see photo 47).
- B. Slide valve shroud out partially.

**STEP 34**

- A. Adjust shroud alignment to eliminate gap on each side (see photo 48).
- B. Securely tighten the screws.



*Photo 47*



*Photo 48*

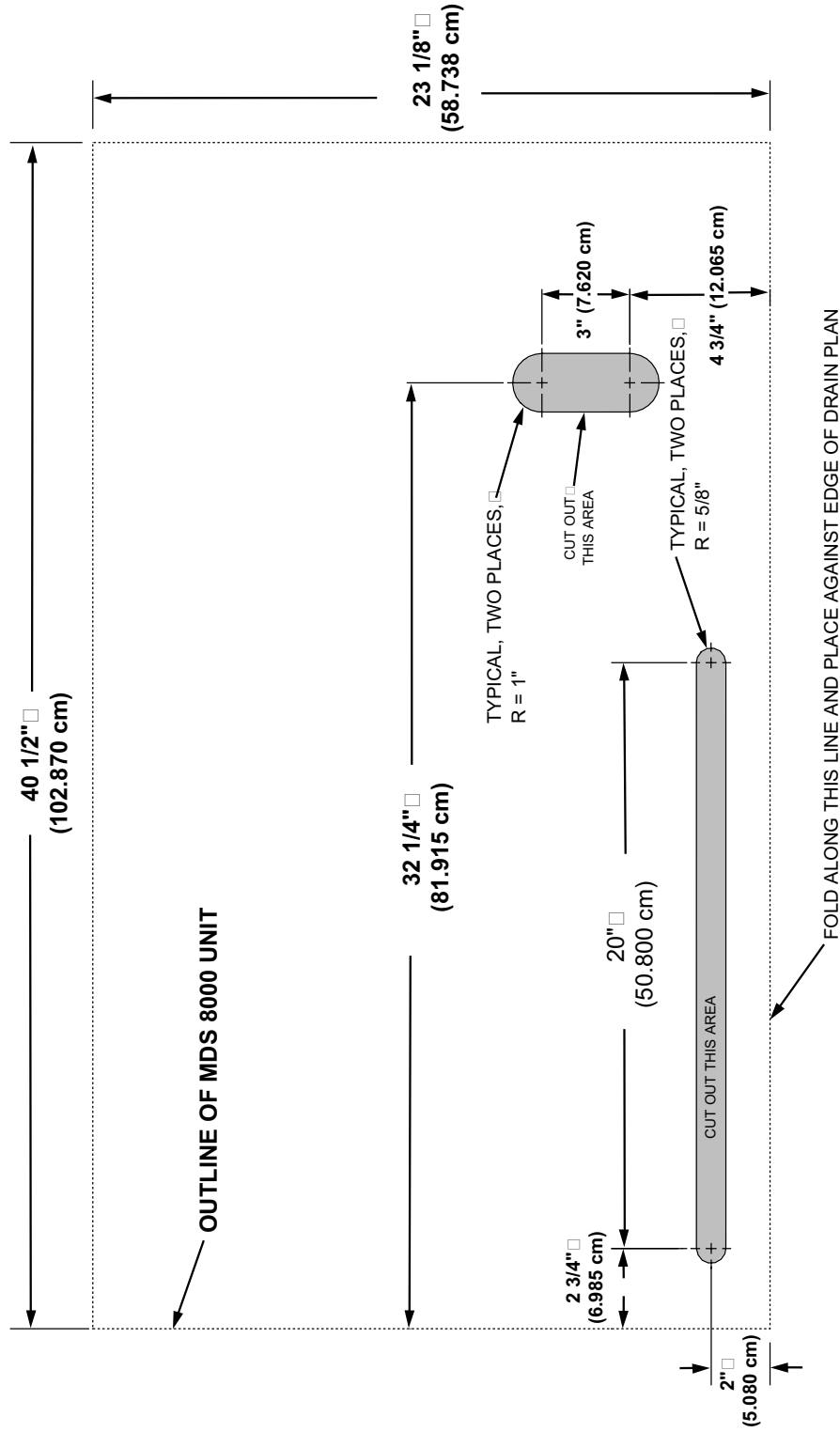


*Photo 49*

3. ILLUSTRATIONS AND PARTS LISTINGS

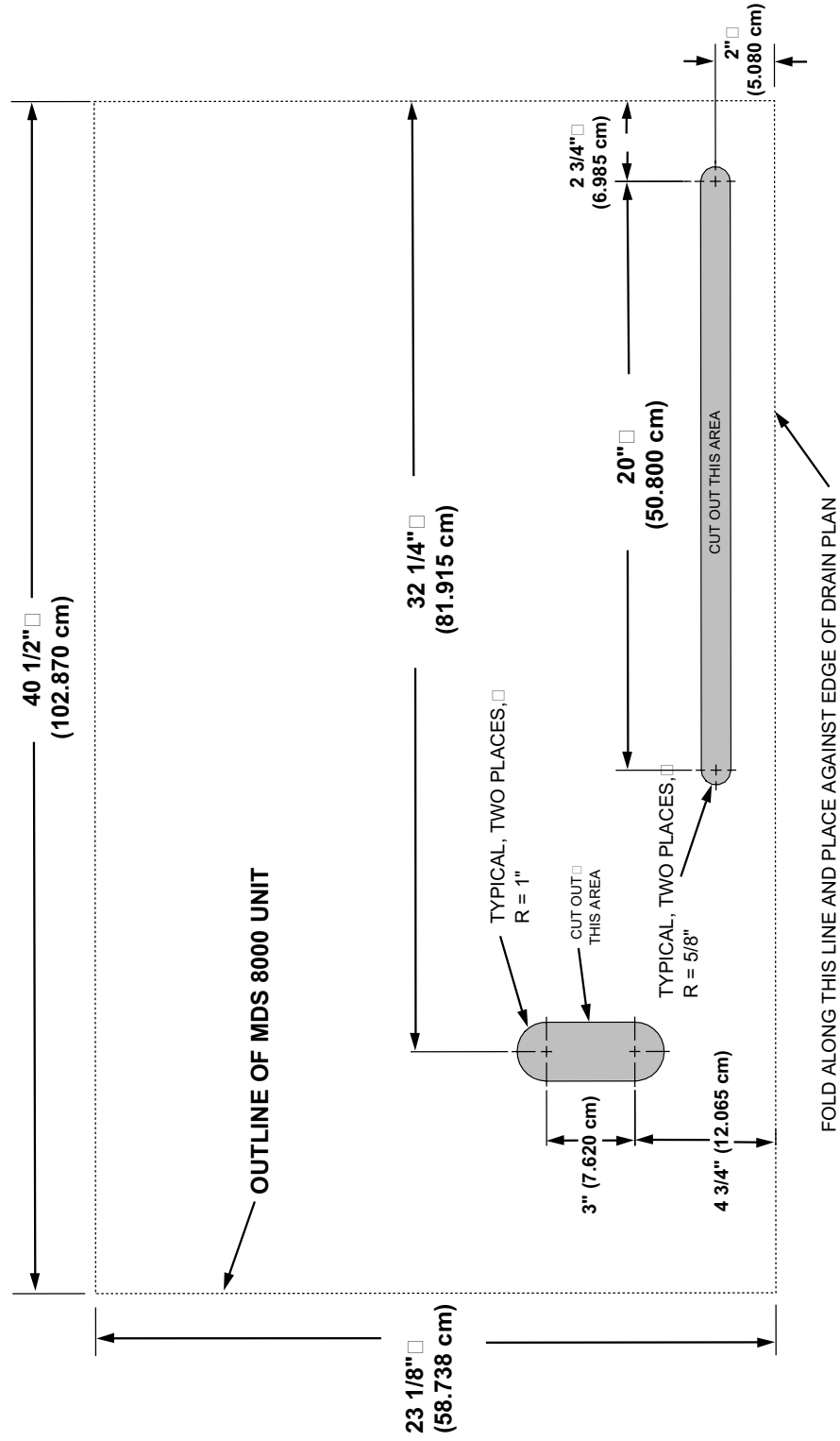
3.1 TEMPLATE, CUTOUT, COUNTER, RH ICE DISPENSER (NO BASE)

**TEMPLATE FOR COUNTER TOP CUTOUT FOR  
MDS 8000 WITH RIGHT-HAND ICE DISPENSER (NO BASE)**



**NOTE: FULL SIZE TEMPLATE IS PROVIDED WITH INSTALLATION KIT**

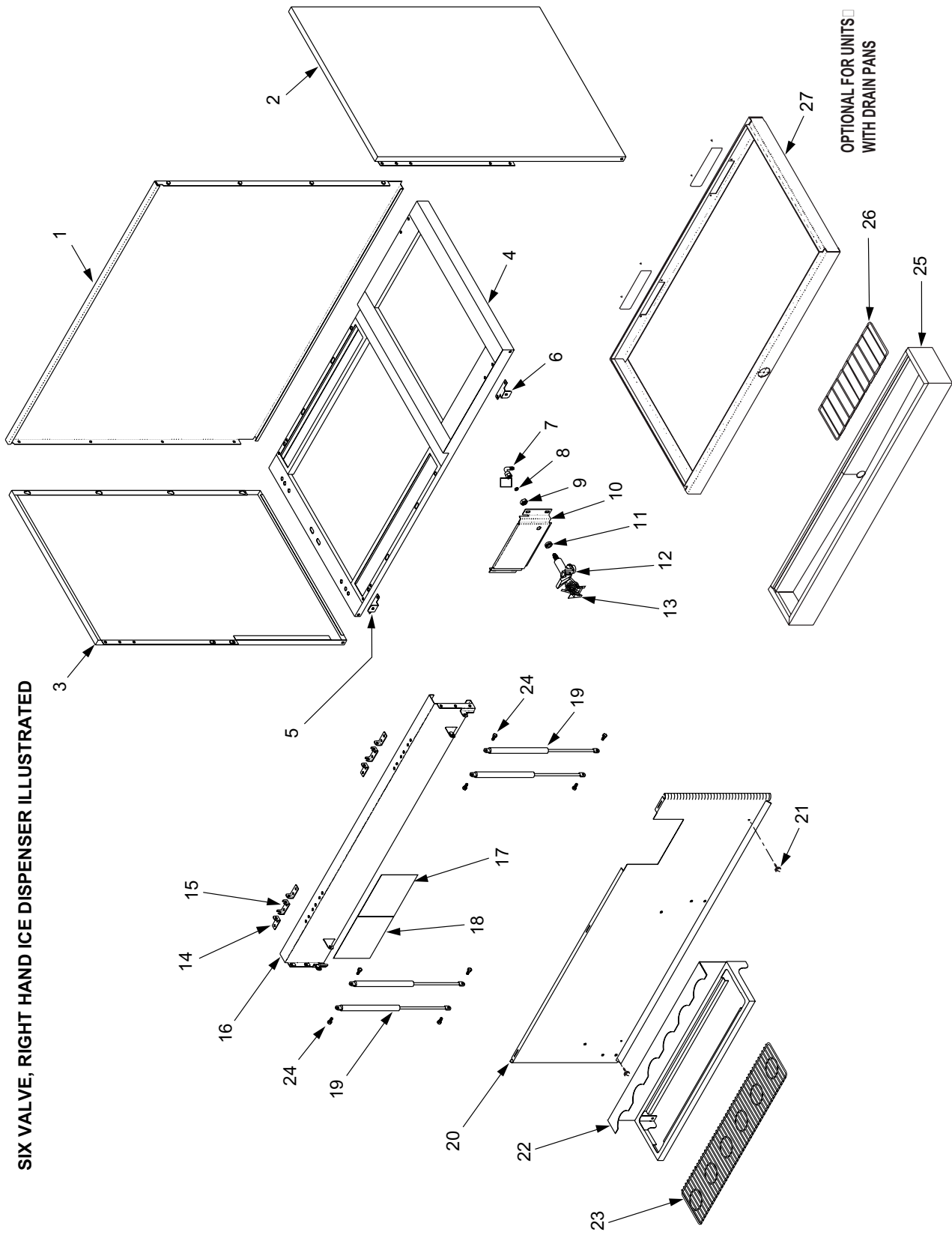
**TEMPLATE FOR COUNTER TOP CUTOUT FOR  
MDS 8000 WITH LEFT-HAND ICE DISPENSER (NO BASE)**



**NOTE: FULL SIZE TEMPLATE IS PROVIDED WITH INSTALLATION KIT**

### 3.3 WRAPPER ASSEMBLY

SIX VALVE, RIGHT HAND ICE DISPENSER ILLUSTRATED

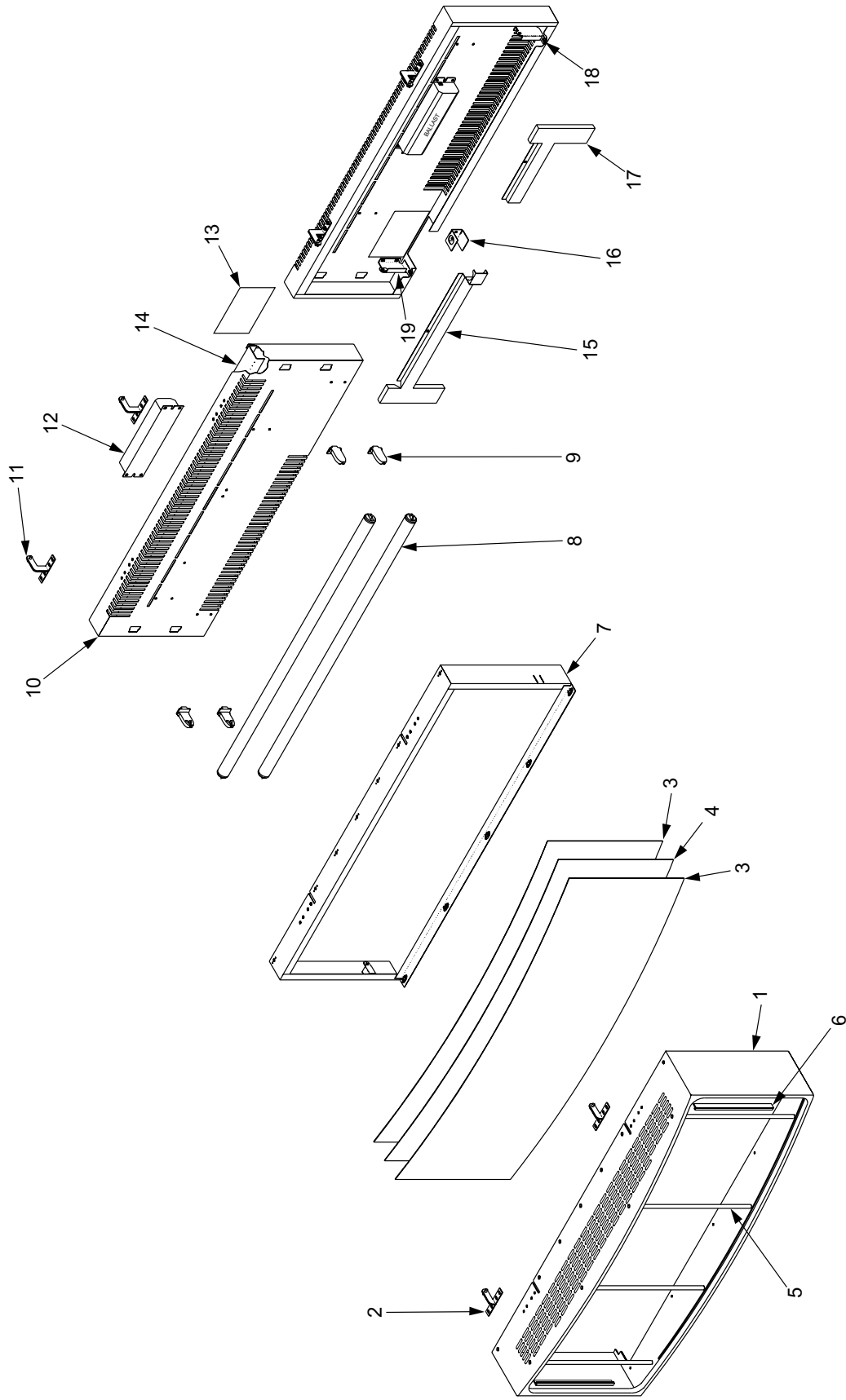


### 3.3 WRAPPER ASSEMBLY (CONTINUED)

<u>ITEM</u>	<u>PART NO.</u>	<u>DESCRIPTION</u>
	1 51-5564	Wrapper, Back Side
<b>R</b>	2 51-5570/01	Wrapper, Right Side
<b>R</b>	3 51-5571/01	Wrapper, Left Side
	4 51-5602	Base Frame Assembly, Universal
	5 51-5580	Bracket Assy, Splash Plate, Left
	6 51-5318	Bracket Assy, Splash Plate, Right
-	51-5381	Bracket Assy, Spash Plate, Universal, 40 Inch Base
-	51-5383	Bracket Assy, Spash Plate, 40 Inch Base
	7 01-0424	Elbow, Swivel, Hose Assy
	8 05-0011	Seal, Washer, 7/16 Inch, 20M Flare
	9 04-0002/01	Nut, 7/16 - 20 x 0.250, SST
	10 30-6506	Bracket, Water Valve, Right Ice Dispenser
-	30-6529	Bracket, Water Valve, Left Ice Dispenser
	11 04-1041	Spacer, Water Valve
	12 19-0346	Water Valve
<b>R</b> -	05-1403	Handle
<b>R</b> -	03-0280	Pin, Handle
	13 06-1720	Decal, Water Valve
	14 30-7119	Hinge, End Support
	15 30-7120	Hinge, Center
	16 51-5316	Front Brace, Sub Assy
	17 06-1717	Label, Wiring Diagram
	18 06-1716	Label, Plumbing Diagram, 6 Valve
-	06-1393	Label, Plumbing Diagram, 8 Valve
	19 81-0508	Shocks, Gas, 20 Pound
	20 51-5315	Splash Plate Assy, RH, Ice Dispense
-	51-5335	Splash Plate Assy, LH, Ice Dispense
-	51-5342	Splash Plate Assy, RH, 40 Inch
-	51-5377	Splash Plate Assy, LH, 40 Inch
	21 04-1042	Thumb Screw, Splash Plate
	22 30-6524	Frame, Cup Rest, 6 Valve
-	30-6568	Frame, Cup Rest, 8 Valve
-	30-6547	Frame, Cup Rest, 6 Valve, 40 Inch Base
-	30-6668	Frame, Cup Rest, 8 Valve, 40 Inch Base
	23 23-1074	Cup Rest, Wire, Target, 6 Valve
-	23-1075	Cup Rest, Wire, Target, 8 Valve
	24 04-1053	Screw, Shoulder
	25 51-5339	Drip Tray Assy, 40 Inch Base (Optional for Units with Drain Pans)
	26 23-1081	Cuprest, Wire, 40 Inch Base (Optional for Units with Drain Pans)
	27 51-5338	Base Assy, 40 Inch (Optional for Units with Drain Pans)

**R** in margin indicates revision or change.

### 3.4 MARQUEE AND LIGHT BOX ASSEMBLY

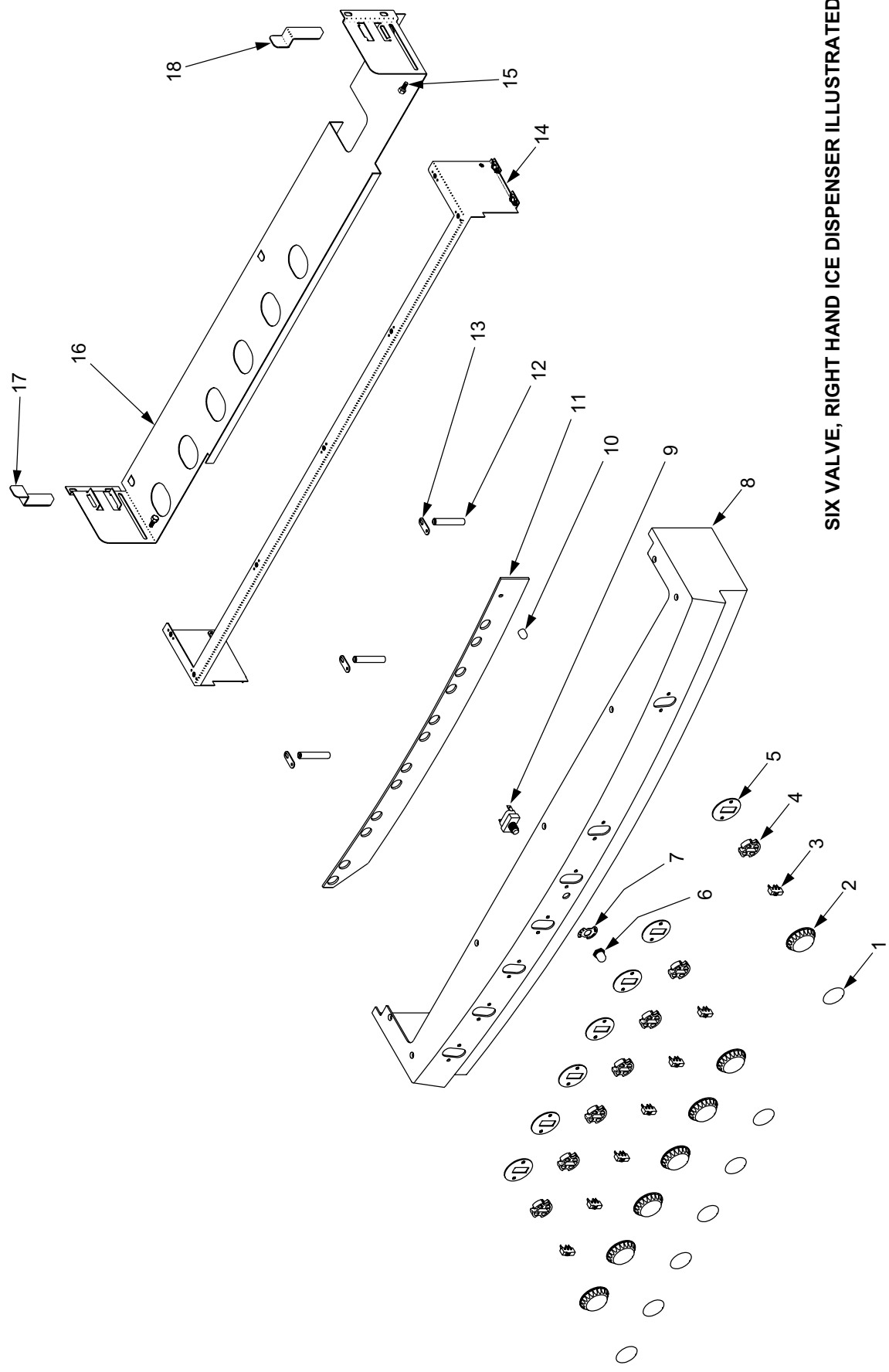


### 3.4 MARQUEE AND LIGHT BOX ASSEMBLY (CONTINUED)

<u>ITEM</u>	<u>PART NO.</u>	<u>DESCRIPTION</u>
1	05-1559	Marquee, Graphic Rails
2	51-5574	Hinge Assy, Marquee
3	27-0050	Lens, Marquee
4	06-1723-02	Graphics, Marquee, Thirst On Ice
<b>R</b> 5	10-0390/01	Bearing, Support, Marquee
6	05-1331	Extrusion, F-Channel
7	51-5309	Frame Assembly, Marquee
8	12-0262	Lamp, 36 Inch, 30W, Daylight
9	12-0119	Socket
10	30-6494	Housing, Light Box
11	51-5576	Hinge Assy, Light Box
12	12-0129	Ballast, 115V/60HZ
-	12-0169	Ballast, 230V/50HZ
<b>R</b> -	12-0282	Ballast, 220V/60HZ
13	06-1796	Label, Wiring Diagram, Lightbox
14	51-5317	Brace Assy, Light Box
15	30-7328	Cover, Wiring, Left
16	30-7327	Bracket, Strain Relief
17	30-7329	Cover, Wiring, Right
18	51-5333	Bracket Assy, Gas Shock, Right
19	51-5321	Bracket Assy, Gas Shock, Left

**NOTE:** R in margin indicates revision.

3.5 SHROUD ASSEMBLY



SIX VALVE, RIGHT HAND ICE DISPENSER ILLUSTRATED



### 3.5 SHROUD ASSEMBLY (CONTINUED)

<u>ITEM</u>	<u>PART NO.</u>	<u>DESCRIPTION</u>
1	06-1676	Label, Coca-Cola Classic
-	06-1674	Label, Diet Coke
-	06-1770	Label, Caffeine Free Diet Coke
-	06-1677	Label, Sprite
-	06-1755	Label, Cherry Coke
-	06-1754	Label, Diet Sprite
-	06-1746	Label, Nestea Unsweetened Iced Tea
-	06-1753	Label, Nestea Sweetened Iced Tea
-	06-1761	Label, Nestea Lemon Iced Tea
-	06-1765/01	Label, Hi-C Fruit Punch
-	06-1745	Label, Hi-C Pink Lemonade
-	06-1767	Label, Hi-C Orange
-	06-1769	Label, Fanta Orange
-	06-1772	Label, Fanta Grape
-	06-1773	Label, Fanta Fruit Punch
-	06-1774	Label, Fanta Red Cream Soda
-	06-1775	Label, Fanta Strawberry
-	06-1756	Label, Barq's Root Beer
-	06-1744	Label, Minute Maid Orange
-	06-1675	Label, Mr. Pibb
-	06-1776	Label, Fresca
-	06-1750	Label, Mello Yello
-	06-1759	Label, Dr.Pepper
-	06-1679	Label, Ice
2	05-1213	Housing, Bottle Cap
3	12-0259	Switch, Bottle Cap Button
4	05-1214/01	Holder, Switch, Ribbed
5	02-0502	Gasket, Bottle Cap Button
6	12-0216	Boot, Splash Proof
7	06-1681	Decal, Soda Water Only
8	05-1563	Shroud, Right Ice, 6 Valve
-	05-1553	Shroud, Left Ice, 6 Valve
-	05-1549	Shroud, Right Ice, 8 Valve
-	05-1551	Shroud, Left Ice, 8 Valve
9	12-0199	Switch, Soda Water Only
10	10-0502	Knob, Slide
11	05-1564	Slide, Shroud, Right Ice, 6 Valve
-	05-1554	Slide, Shroud, Left Ice, 6 Valve
-	05-1550	Slide, Shroud, Right Ice, 8 Valve
-	05-1552	Slide, Shroud, Left Ice, 8 Valve
12	10-0501	Bearing, Slide
13	30-7145	Bracket, Shroud, Slide
14	51-5310	Frame Assy, Shroud
15	04-1053	Screw, Shoulder, Gas Shocks and Valve Cover
16	51-5320	Bracket Assy, Valve Cover, 6 Valve, Right Ice
-	51-5334	Bracket Assy, Valve Cover, 6 Valve, Left Ice
-	51-5350	Bracket Assy, Valve Cover, 8 Valve, Right Ice
-	51-5352	Bracket Assy, Valve Cover, 8 Valve, Left Ice
17	30-6501	Pin, Latch, Left
18	30-6500	Pin, Latch, Right

# ***NOTES***

*(Continued from previous page)***EcuLancer S.A. - Ecuador**

Lancer Sales Company  
 Contact: Luciano Lopez  
 Sector Las Acacias  
 Luis De Beethoven #958  
 Y Capitan Rafael Ramos  
 Quito, Ecuador  
 Phone: 593-22-401-598, 400-937, 406-418  
 FAX: 593-22-400-535  
 e-mail: Llopez@ecnet.ec

**Lancer Authorized Distributors****Eximport & Barter Co. - Caribbean**

2101 S.W. 56th Terrace  
 Hollywood, FL 33023 USA  
 Phone: (954) 967-9999  
 FAX: (954) 967-9900  
 e-mail: edbrandao@aol.com

**PromoVen, S.A. - Argentina**

Contact: Rafael Mendoza  
 Juncal 858 - Piso 3 Depto. "L"  
 (1062) Buenos Aires  
 Argentina  
 Phone: (54.11)4394.7654  
 FAX: (54.11)4394.1193  
 e-mail: promoven@customw.com.ar

**Bras Sulamericana LTDA. - Brasil**

Contact: Fabio Queiroz  
 Rua. Dr. Ladislau Rettii, 1400  
 Parque Alexandre  
 Cotia Sao Paulo - Brasil  
 CEP: 06714-150  
 Phone: 55-11-4612-1122  
 FAX: 55-11-4612-2219  
 e-mail: fabio.queiroz@bras.com.br

**Lancer Chile Ltda. - Chile**

Contact: Heriberto Concha  
 Vicuna Mackenna 3019, San Joaquin  
 Santiago, Chile  
 Phone: 56-2-552-1657  
 FAX: 56-2-552-1961  
 e-mail: hconcha@lancer-intl.com

**Lancer Pacific****International Sales**

6655 Lancer Blvd.  
 San Antonio, TX 78219  
 Phone: (210) 310-7000  
 FAX: (210) 310-7242  
 1-800-729-1500  
 e-mail: asia@lancercorp.com

**Australia**

Lancer Pacific Pty Ltd  
 5 Toogood Avenue  
 Beverley 5009  
 South Australia  
 Phone: 61-8-8268-1388  
 FAX: 61-8-8268-1978  
 e-mail: ian-lunniss@lancer-pacific.com.au  
 steve-sotiriou@lancer-pacific.com.au  
 (for Fountain)  
 fiore-alvaro@lancer-pacific.com.au  
 (for Beer)

Lancer Pacific Pty Ltd  
 7 Slough Avenue  
 Silverwater 2128  
 New South Wales  
 Australia  
 Phone: 61-2-9648-6840  
 FAX: 61-2-9648-6850  
 e-mail: neild-mcintosh@lancer-pacific.com.au  
 (Managing Director)  
 john-frize@lancer-pacific.com.au  
 (NSW State Manger)

Lancer Pacific Pty Ltd  
 55 Keele Street  
 Collingwood 3066  
 Victoria  
 Australia  
 Phone: 61-3-8415-1920  
 FAX: 61-3-8415-1929  
 e-mail: glenn-blakiston@lancer-pacific.com.au

Lancer Pacific Pty Ltd  
 Unit 31, 284 Musgrave Drive  
 Coopers Plains 4108  
 Queensland  
 Australia  
 Phone: 61-7-3274-5700  
 FAX: 61-7-3875-1805  
 e-mail: brett-thomson@lancer-pacific.com.au

**New Zealand**

Lancer Pacific Ltd  
 9 O'Rorke Street  
 Onehunga, Auckland  
 New Zealand  
 Phone: 64-9-634-3612  
 Mobile Phone: 64-21-745-389  
 FAX: 64-9-634-1472  
 e-mail: mike-peffers@lancer-pacific.com.au  
 andrew-nixon@lancer-pacific.com.au

**Lancer Asia****Hong Kong**

1001 Technology Plaza  
 651 King's Road  
 North Point  
 Hong Kong  
 Patrick Co - Area Manager - Asia  
 Phone: 852-2214-9195  
 Rob Burdock - Senior Director - Asia  
 Phone: 852-2214-9196  
 FAX: 852-2214-9448  
 e-mail: rob-burdock@lancer-asia.com  
 patrickco@lancer-asia.com

**Lancer Authorized Distributors****Shanghai Freser International Co Ltd. - China**

1856, Hu Tai Road  
 Shanghai, 200436, China  
 Phone: 86-21-5650-3555  
 FAX: 86-21-5650-2666  
 e-mail: daniel@freser.com.cn

**Freser (HK) Company Ltd - Hong Kong**

Flat A, 24/F., Houston Industrial Bldg.  
 32-40 Wang Lung Street  
 Tsuen Wan, N. T., Hong Kong  
 Phone: 852-2408-2595  
 FAX: 852-2408-2605  
 e-mail: freserhk@netvigat.com

**P.T. Dikarunia Sejahtera - Indonesia**

Jl. Gelong Baru Tengah #1A, Tomang  
 Jakarta, Barat 11440, Indonesia  
 Phone: 62-21-5694-3242  
 62-21-5437-2534  
 FAX: 62-21-5694-3242  
 e-mail: dikarunia@cbn.net.id

**Hayakawa Sanki - Japan**

Hayakawa Sanki, Inc.  
 1-13-13, Kayaba-cho  
 Nihonbashi, Chuo-ku  
 Tokyo, 103-0025  
 Japan  
 Phone: 03-5651-1481  
 FAX: 03-5651-1445  
 e-mail: SANKI10217@aol.com

**Tahoe Corporation - Korea**

Tahoe Corporation  
 2FL, 835-66 Yocksam-dong  
 Kangnam-Ku  
 Seoul, Korea  
 Phone: 82-2-557-5612, -5614  
 FAX: 82-2-557-5615  
 e-mail: tahoe@netsgo.com

**Freser (MALAYSIA) SDN. BHD. - Malaysia**

No. 31, Jalan TPP 5/13, Taman  
 Perindustrian Puchong, Seksyen 5,  
 47100 Puchong, Selangor, Malaysia  
 Phone: 60-3-8061-6666  
 FAX: 60-3-8062-1007  
 e-mail: freser@tm.net.my

**R.B.P. Industrial Sales Inc - Philippines**

Unit 20, Facilities Centre Bldg.  
 548 Shaw Blvd  
 Mandaluyong City, Philippines  
 Phone: 632-531-1215/1221/1289  
 FAX: 632-531-1271  
 e-mail: rbpsales@info.com.ph

**Freser (S) Pte Ltd - Singapore**

Blk 998 Toa Payoh North  
 #04-12/14  
 Singapore 318993  
 Phone: 65-6352-0943  
 FAX: 65-6352-8594  
 e-mail: fresersin@pacific.net.sg

**Freser International Corporation - Taiwan**

No. 76, Gui-Sui Street  
 Taipei 103, Taiwan R.O.C.  
 Phone: 886-2-2553-1555  
 FAX: 886-2-2553-2742  
 e-mail: allen@intl.freser.com.tw

**Freser (Thailand) Co Ltd - Thailand**

3/15 Moo 3, Soi Ruammitr  
 Tivanont Road, Banmai  
 Pakkred, Nonthaburi, 11120  
 Thailand  
 Phone: 662-961-9543  
 FAX: 662-961-9550  
 e-mail: prachat@asianet.co.th

**Lancer - Indian Sub-Continent****India**

Shabbir Shafiqi - Area Manager  
 India and Sub-Continent  
 B-7, Pannalal Silk Mill Compounds  
 78, LBS Marg, Bhandup (W)  
 Mumbai 400-078, India  
 Phone: 91-22-2561-6665  
 Cel No.: 91-98-2029-5252  
 FAX: 91-22-5637-4018  
 e-mail: shafiqis@vsnl.com

**Lancer Authorized Distributors****Western Refrigeration Ltd - India**

B-7, Pannalal Silk Mill Compounds  
 78 L.B.S. Marg, Bhandup (W)  
 Mumbai 400-078, India  
 Phone: 91-22-2561-6665  
 FAX: 91-22-2562-2257  
 e-mail: western@bom5.vsnl.net.in

**Bengal Marketing Company - Bangladesh**

Skylark Point (6th Floor)  
 Room #G-2  
 24/A Bijoy Nagar,  
 Dhaka-1000, Bangladesh  
 Phone: 880-2-934-2987  
 FAX: 880-2-935-0127  
 e-mail: bmc@dhaka.agni.com

**Dynamic Equipment - Pakistan**

Dynamic Equipment and Controls (Pvt.) Ltd.  
 F-1/23, Canal Cottages, Block-D.  
 New Muslim Town.  
 Lahore, Pakistan.  
 Phone: 0092-42-583-6737  
 0092-42-583-6787  
 FAX: 0092-42-586-7924  
 e-mail: info@dynamic-eqpt.com.pk  
 m.ateeq@dynamic-eqpt.com.pk



**Directory of USA - Canada Offices,  
International Offices, and Authorized Distributors**

Corporate Office

6655 Lancer Blvd. • San Antonio, Texas 78219 • 210-310-7000 • 1-800-729-1500 • FAX 210-310-7250

**Lancer USA**

**Manufacturing Locations**

**Foster Road Facilities**

6655 Lancer Blvd  
San Antonio, TX 78219  
Phone: (210) 310-7000  
MFG FAX: (210) 310-7088  
ENG FAX: (210) 310-7096  
ACCT FAX: (210) 310-7091  
PURCH FAX: (210) 310-7094

**Lancer FBD**

5620 Business Park  
San Antonio, TX 78218  
Phone: (210) 666-0544  
FAX: (210) 666-2044

**Lancer Ice Link**

6655 Lancer Blvd  
San Antonio, TX 78219  
Phone: (210) 310-7174  
FAX: (210) 310-7245

**Remanufacturing**

6655 Lancer Blvd  
San Antonio, TX 78219  
Phone: (210) 310-7256  
FAX: (210) 310-7261  
1-800-729-1550

**Lancer North America**

**USA - Canada Sales**

6655 Lancer Blvd.  
San Antonio, TX 78219  
Phone: (210) 310-7000  
SALES FAX: (210) 310-7245  
CUSTOMER SERVICE FAX: (210) 310-7250  
1-800-729-1500

**Georgia Office**

1125 Northmeadow Parkway, Suite 116  
Roswell, GA 30076  
Phone: (770) 343-8828  
FAX: (770) 475-8646  
1-800-729-1750

**Lancer Authorized Distributors**

**Advanced Beverage Solutions (ABS)**

100 N. Gary Avenue, Suite C  
Roselle, IL 60172  
Phone: (847) 524-1707  
(877) 814-2271  
FAX: (847) 524-1710  
www.absone.com

**Bevco**

6900 Camille Avenue  
Oklahoma City, OK 73149  
Phone: (405) 672-7770  
FAX: (405) 672-7443  
e-mail: info@bevcoinc.com

**Joe Kirwan Company**

119 White Oak Lane  
Old Bridge, NJ 08857  
Phone: (732) 679-1900  
FAX: (732) 679-9236  
e-mail: sales@jkirwan.com

**L & M Beverage Equipment Co. Inc.**

12510 Santa Fe Trail Drive  
Lenexa, KS 66215  
Phone: (913) 888-8988  
FAX: (913) 888-9137  
e-mail: L7mco@aol.com

(Update #48 - as of January 13, 2004)

**Ernest F. Mariani Company**

614 West 600 South  
Salt Lake City, UT 84104  
Phone: (801) 359-3744  
FAX: (801) 531-9615  
e-mail: febell@efmco.com, or  
clay@efmco.com

**Mark Powers & Company, Inc.**

P.O. Box 72  
1821 Henry Street  
Guntersville, AL 35976  
Phone: (256) 582-6620  
FAX: (256) 582-8533  
e-mail: sales@markpowers-and-company.com

**Maurer Supply, Inc.**

843 Rainier Avenue South  
Seattle, WA 98144  
Phone: (206) 323-8640  
FAX: (206) 323-9286  
e-mail: maurersupply@qwest.net

**Simgo Ltd.**

5122 Timberlea Blvd.  
Mississauga, Ontario L4W 2S5  
Canada  
Phone: 905-602-5800  
FAX: 905-602-5804  
e-mail: simgo@simgo.com

**Simgo (B.C.) Ltd.**

16-8125 - 130th Street  
Surrey, B.C. V3W 7X4  
Canada  
Phone: 604-590-4022  
FAX: 604-590-1601

**Lancer Europe**

**Belgium - European Central Office**

Lancer Europe, S.A.  
Mechelsesteenweg 592  
B-1930 Zaventem  
Belgium  
Phone: 32-2-755-2390  
FAX: 32-2-755-2399  
e-mail: lancer.europe@glo.be

**England**

Managing Director  
Contact: Paul Haskayne  
Lancer G.B. Llp.  
Unit 9 Prosperity Court, Midpoint 18  
Middlewich CW10 OGD  
Cheshire, United Kingdom.  
Phone: 441606837711  
FAX: +441606832705  
e-mail: paul-haskayne@lancer-pacific.com.au  
17 Bembridge Gardens  
Ruislip, Middlesex  
HA4 7ER, England  
Phone: 44-1895672667  
FAX: 44-1895637537  
e-mail: court4lancer@msn.com

**Hungary**

H-2100 Gödöllő  
Isaszegi út 67  
Hungary  
Phone: 36-28-417-179  
FAX: 36-28416-881  
e-mail: bodolai@compuserve.com

**Lancer Authorized Distributors**

**Complete Beverage Services, Ltd.**

**Republic of Ireland and Northern Ireland**  
Gortrush Industrial Estate  
Omagh County Tyrone  
Northern Ireland  
Office: 44-1662 250 008  
FAX: 44-1662-252-991

**Intercom - Spain**

Intercom  
Avda. Concha Espina 8  
28036 Madrid Spain  
Phone: 34-91-564 6900  
FAX: 34-91-564 3065  
e-mail: jmorales@bevserv.com

**Lancer Russia**

**Lancer International Sales, Inc.  
Representation Office**

Kashirskoe shosse, 65 (1), Office 505  
Moscow 115583 Russia  
Mail: Moscow, 115551, Mail Box #2, Russia  
Mobile Phone: 7-095-991-7778  
Office Phone: 7-095-727-4063  
Office FAX: 7-095-727-4064  
e-mail: vdemkin@ktv.ru

**Lancer Middle East / Africa**

Elsayed Moniem - Technical Manager  
Lancer Middle East/Africa  
7 Mubarak Street  
East Ain Shams 11311  
Cairo, Egypt  
Phone/FAX: 2-02-49-35-395  
Mobile Phone (GSM): 2-010-500-4007  
e-mail: elsayed\_lancer@msn.com

**Lancer Authorized Distributor**

**DispenseTech - South Africa**

P.O. Box 17495  
Sunward Park, 1470  
South Africa  
Phone: 27-11-397-7455  
FAX: 27-11-397-7648  
e-mail: david@dispensetech.co.za

**Lancer Latin America**

**Latin America Sales**

6655 Lancer Blvd.  
San Antonio, TX 78219  
Phone: (210) 310-7000  
FAX: (210) 310-7245  
1-800-729-1500  
e-mail: latinamerica@lancercorp.com

**Lancer de México, S.A. de C.V.**

Contact: Gerardo Canales  
Calle Lerdo De Tejada #544 PTE.  
Col. Las Villas  
San Nicolas De Los Garza, N.L.  
Monterrey, N. L., México C.P. 66422  
Phone: (52)-81-83-52-85-32  
Phone: (52)-81-83-52-85-34  
Phone: (52)-81-83-52-53-60  
FAX: (52)-81-83-32-54-10  
e-mail: direccion@lancer.com.mx

**Lancer de México, S.A. de C.V.**

**Branch Office, Mexico City**

Contact: Carlos Lopez  
Lancer de Mexico S.A. de C.V.  
Sucursal Mexico D.F.  
Calle: Centeotl No. 112  
Colonia: La Preciosa  
Delegacion: Azcapotzalco  
Mexico D.F. C.P. 02460  
Phone: (52)-55-53-53-89-28  
Phone: (52)-55-53-53-89-26  
Phone: (52)-55-53-53-88-60  
Phone: (52)-55-53-53-88-21  
FAX: (52)-55-53-52-46-30  
e-mail: carlos.lopez@lancer.com.mx

(Continued on reverse)