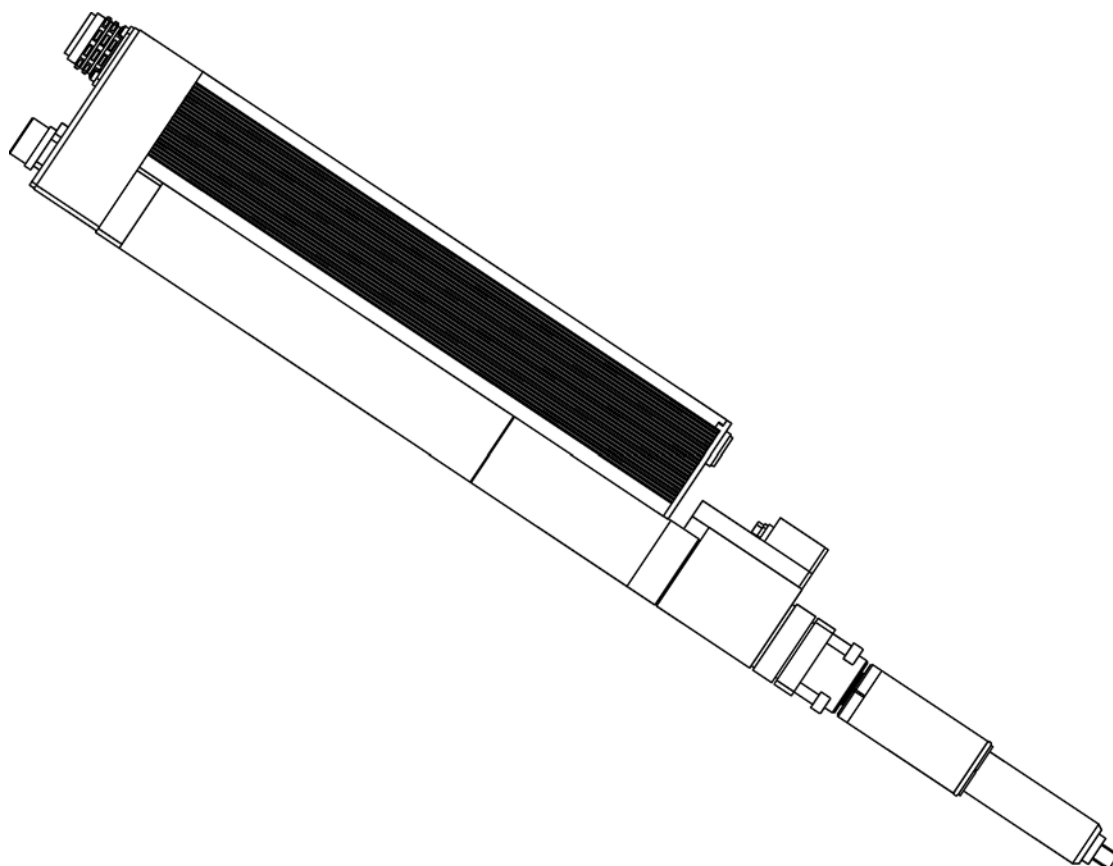


Service Manual
P2079WA/EN
2013-03



DGD-Intelligente-Spindel

BTSE Series



For additional product information visit our website at <http://www.apexpowertools.eu>

About this service manual

This service manual is the – translation of the original service manual – and provides important information on safe and correct installation.

Symbols in text

- Identifies instructions to be followed.
- Identifies lists.

Abbreviations

mPro400GC	Nutsetter control
PDB-CPS...	Power distribution box
TSE/TUSE	Tightening module
CPS3	Supply module
DGD-IS	DGD intelligent spindles

Symbols in graphics:



Identifies movement in a direction.



Identifies function and force.

Disclaimer:

Apex Tool Group reserves the right to modify, supplement or improve this document or the product without prior notice. This document may not be reproduced in whole or in part in any way, shape or form, or copied to another natural or machine-readable language or to a data carrier, whether electronic, mechanical, optical or otherwise, without the express permission of Apex Tool Group.

DGD is a trademark of the Apex Tool Group Division.

1 Safety

CAUTION!



This document is only valid in conjunction with the assembly instructions for the DGD intelligent spindle.
→ Read the chapter on safety!

DANGER!



High leakage current –
Fatal electric shock could occur!

- Always disconnect the power supply before performing maintenance work on the DGD-IS and the PDB-CPS....
- Always disconnect the system cable, motor or motor cable from the PDB-CPS... or DGD-IS before making throughput, resistance and short circuit measurements.
- Do not attempt to repair possible faults on the fastening system by yourself if you do not have the required knowledge! Inform the local repair center or your Sales & Service Center.

WARNING!



High temperature –
the motor on the DGD-IS may heat up and cause burns during removal.
(max. engine temperature 90 °C). Wear gloves.

2 Service schedule

Only trained personnel are permitted to perform maintenance. Regular maintenance reduces operating faults, repair costs and downtime. In addition to the following service plan, implement a safety-related maintenance program that takes the local regulations for repair and maintenance for all operating phases of the tool into account.

	When operating the DGD-IS at ...% of the maximum torque		Actions
	80 %	100 %	
After ... fastening cycles	3 Mio.	1 Mio.	General design of all types except ... (see the following lines). After achievement of the fastening cycles a general overhaul is required. → Send DGD-IS for examination and recalibration to Sales & Service Center.
	1 Mio.	500.000	For following types with angle attachment, size 4: 4B(U)TSE-4B...A-4M...B-4WM...B: → Send DGD-IS for examination and recalibration to Sales & Service Center.
	1 Mio.	700.000	For following types with angle attachment, size 3, 2: 3B(U)TSE-3B300A-3M2B-3WM2B 2B(U)TSE-2B200A-...-2WM3B: → Send DGD-IS for examination and recalibration to Sales & Service Center.
	1 Mio.	700.000	For all types with offset attachment: ...B(U)TSE-...VK... → Send DGD-IS for examination and recalibration to Sales & Service Center.

2.1 Lubrication

In order to ensure faultless functioning and a long service life, it is absolutely necessary to use the right type of oil according to the table.

Grease lubricants according to DIN51502/ISO3498

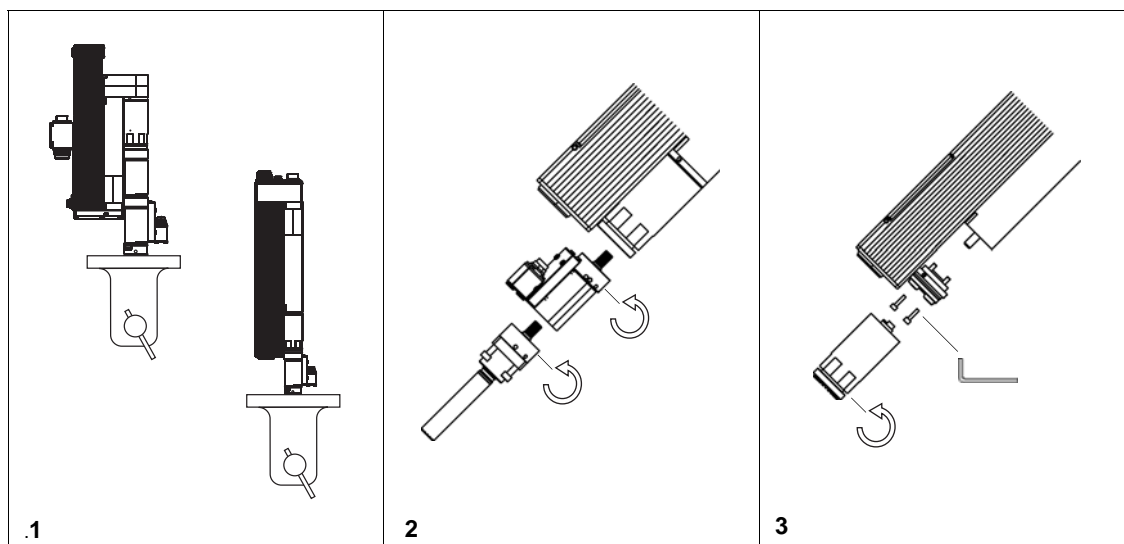
Lubrica- tion point	Part no.	Pack. Unit	DIN / ISO						
		[kg]							
	912554	15	G-POH	Aralub FD00	Energrea se HTO	GA 0 EP Expa 0	Mobilplex 44		Special Gearing H
	933027	1	KP1K					Microlube ¹⁾ GL 261	

1) Initial lubrication Apex Tool Group

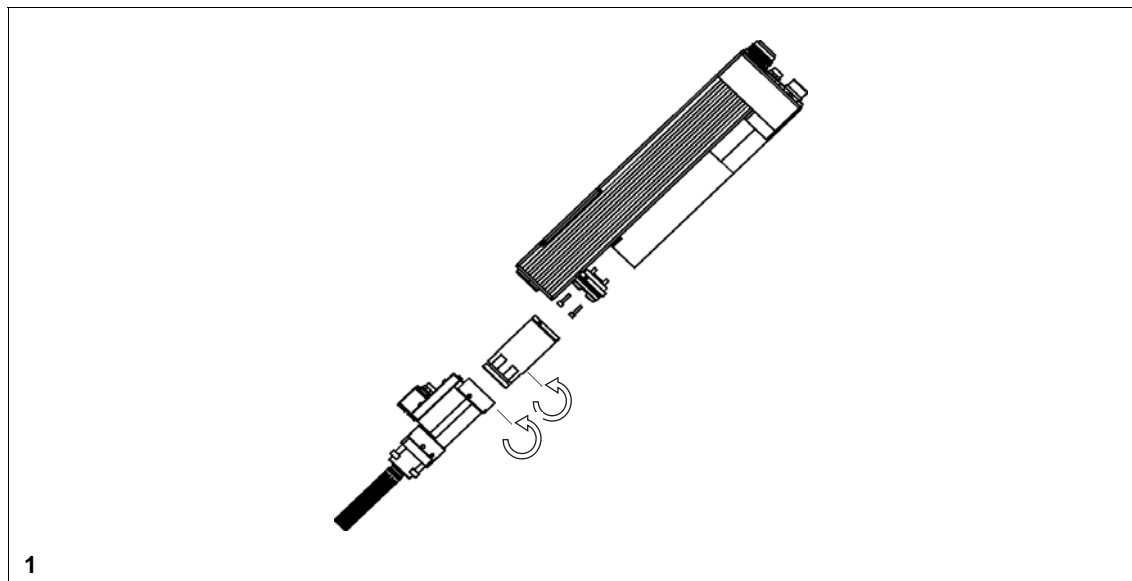
3 Removing the DGD-IS

- Loosen and remove plug connectors.
- Remove the complete DGD-IS from the fastening station.
- Secure the spanner contact surfaces on the nutsetter spindle or component in a vice.
Place in position, do not tighten!
- Turn the cap nut counterclockwise. Hook wrench, see table page 6.
- Loosen the components.

3.1 Dismantling the DGD-IS into components



3.2 Removing the gearing from the DGD-IS



4 Installing the DGD-IS

NOTE



Before replacing a component

→ always carry out a machine capability study (MFU).

After assembly

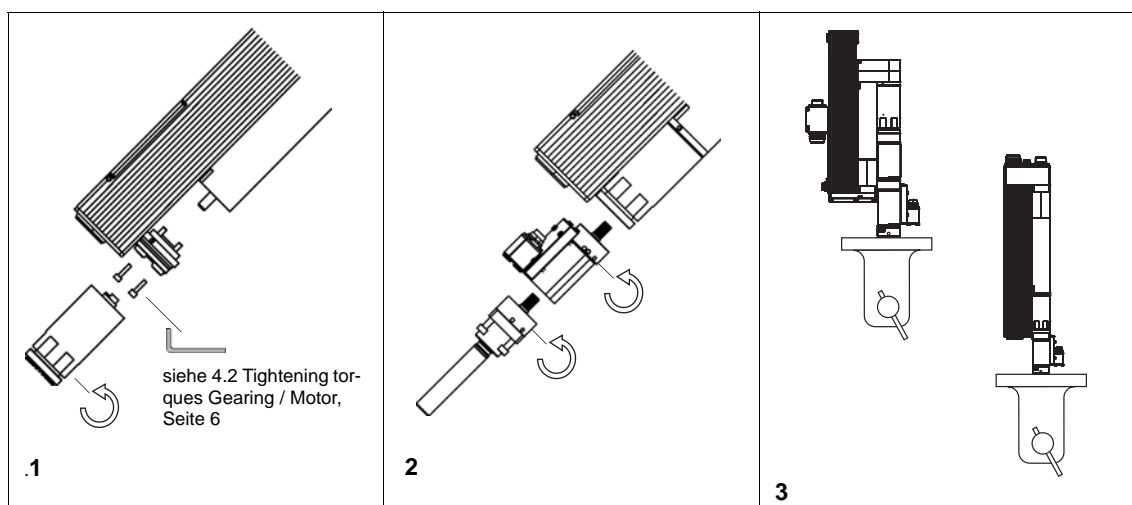
→ check the calibration of the torque transducer.

→ check the function of the angle encoder.

We recommend servicing by Sales & Service Center.

If space is confined by positioning multiple DGD-IS, you can

- Turn size 1 in 15° increments.
 - Turn sizes 4 to 2 in 10° increments.
- Position the DGD-IS components together via flat toothed interfaces. Place in position, do not tighten!



4.1 Tightening torques lock nut

Assemble the components in reverse order to the removal sequence.


CAUTION!



Risk of flying parts.

Components of the DGD-IS may rotate, come loose and cause injury.

Observe the tightening torque of the cap nuts. The tightening torque is the same for all sizes.

Size	Tightening torque tightening torque Nm $\pm 5\%$	Tightening torque adjustment ¹⁾ Nm $\pm 5\%$	Hook wrench		Torque wrench Order no.
			Order no.		
1	50	43	933336	9 x 12	933340
2	85	73	933337		
3	85	73	933338		
4	110	92	933339		

1) Different setting due to leverage effect of the hook wrench

4.2 Tightening torques Gearing / Motor

Size	Tightening torque Nm	Order no.	Size
1	2.6 – 3.2	913947	3
2	2.9 – 3.2		
3	9 – 11	920533	5
4	9 – 11		

5 Recalibrating the nutsetter data

The nutsetter data is stored in the service memory. The service memory is located in the transducer components, offset attachment and angle head attachment in the DGD-IS.

NOTE



Only trained personnel are permitted to replace these components. Otherwise there is a risk that data without a system reference is stored in the service memory of a transducer (e.g. incorrect nutsetter type and serial number, incorrect fastening count, incorrect repair data, etc.).

NOTE



The service memory of new components does not contain nutsetter data (installation possible in different types of DGD-IS). As a spare part, the transducer is not configured for self-identification via the nutsetter control unit PDB-CPS....

In this case, the nutsetter data must be entered in the service memory manually using the nutsetter control unit.

No limits are imposed on the torque measuring functions.

- To recalibrate the type-specific nutsetter data, please send the DGD-IS to Sales & Service Center. Only this will ensure that after the service work, any required nutsetter data update is carried out properly.

6 Disposal

CAUTION!



Injuries and environmental damage from improper disposal.

Components of the DGD-IS pose risks to the health and the environment.

- The DGD-IS contains components that can be reused as well as components that require special disposal. Separate the components and dispose of them by segregating them clearly.
- Catch auxiliary materials (oils, greases) when drained and dispose of them properly.
- Separate the components of the packing and dispose of them by segregating them clearly.
- Follow the locally applicable regulations.



Observe generally valid disposal guidelines such as, in Germany, the Electrical and Electronic Equipment Act (ElektroG):

- Hand in the DGD-IS at your company collection point or return to Sales & Service Center.
-

Sales & Service Centers

Note: All locations may not service all products. Please contact the nearest Sales & Service Center for the appropriate facility to handle your service requirements.

Detroit, MI

**Apex Tool Group
Sales & Service Center**
2630 Superior Court
Auburn Hills, MI 48326
USA
Phone: +1-248-393-5640
Fax: +1-248-391-6295

Seattle, WA

**Apex Tool Group
Sales & Service Center**
2865 152nd Avenue N.E.
Redmond, WA 98052
USA
Phone: +1-425-497-0476
Fax: +1-425-497-0496

England

**Apex Tool Group GmbH &
Co. OHG**
C/O Spline Gaugesl
Piccadilly Tamworth
Staffordshire B78 2ER
United Kingdom
Phone: +44-191 419 7700
Fax: +44-191 417 9421

India

**Apex Power Tools India
Private Limited**
Gala No. 1, Plot No. 5
S. No. 234, 235 & 245
Indialand Global Industrial
Park
Taluka-Mulsi, Phase I
Hinjawadi, Pune 411057
Maharashtra, India
Phone: +91-20-66761111

Houston, TX

**Apex Tool Group
Sales & Service Center**
6550 West Sam Houston
Parkway North, Suite 200
Houston, TX 77041
USA
Phone: +1-713-849-2364
Fax: +1-713-849-2047

York, PA

**Apex Tool Group
Sales & Service Center**
3990 East Market Street
York, PA 17402
USA
Phone: +1-717-755-2933
Fax: +1-717-757-5063

France

Apex Tool Group SNC
25 Rue Maurice Chevalier
BP 28
77831 Ozoir-la-Ferrière
Cedex, France
Phone: +33-1-6443-2200
Fax: +33-1-6440-1717

Mexico

**Apex Tool Group México
S. de R.L. de C.V.**
Validad El Pueblito #103
Parque Industrial
76220 Querétaro
Mexico
Phone: +52 (442) 211-3800
Fax: +52 (442) 103-0443

Lexington, SC

Apex Tool Group
670 Industrial Drive
Lexington, SC 29072
USA
Phone: +1-800-845-5629
Phone: +1-803-951-7544
Fax: +1-803-358-7681

Brazil

**Apex Tool Group
Sales & Service Center**
Caixa Postal 692
18001-970 Sorocaba, SP
Brazil
Phone: +55-15-238-3929
Fax: +55-15-238-3260

Germany

**Apex Tool Group
GmbH & Co. OHG**
Industriestraße 1
73463 Westhausen
Germany
Phone: +49-7363-81-0
Fax: +49-7363-81-222

China

**Apex Power Tools Tra-
ding (Shanghai) Co., Ltd**
A company of
Apex Tool Group, LLC
A8, No.38, Dongsheng
Road, Shanghai,
China 201201
Phone: +86-21-60880320
Fax: +86-21-60880298

Los Angeles, CA

**Apex Tool Group
Sales & Service Center**
6881 Stanton Avenue, Unit B
Buena Park, CA 90621
USA
Phone: +1-714-994-1491
Fax: +1-714-994-9576

Canada

**Apex Tool Group
Sales & Service Center**
7631 Bath Road
Mississauga, Ont. L4T 3T1
Canada
Phone: +1-866-691-6212
Fax: +1-905-673-4400

Hungary

**Apex Tool Group
Hungaria Kft**
Platánfa u. 2
9027 Győr
Hungary
Phone: +36-9666-1383
Fax: +36-9666-1135

Apex Tool Group GmbH & Co. OHG
Industriestraße 1
73463 Westhausen
Germany
Phone: +49-7363-81-0
Fax: +49-7363-81-222
www.apexpowertools.eu

