

MPK-THG

SERVICE MANUAL

Ver. 1.2 2009.04

*US Model
Canadian Model
AEP Model
Chinese Model*



SPECIFICATIONS

Material

Plastic (PC, ABS), Glass

Water-resistance

O-ring, Buckle

Pressure-resistance

To a depth of up to 40 m (132 feet) underwater

Switches that can be externally operated

Power, Shutter, Playback, Zoom (W/T), Shooting mode,
Underwater
white balance, Flash, Macro, Image size

Dimensions

Approx. 134 x 94 x 38 mm (5 3/8 x 3 3/4 x 1 1/2 in.) (w/h/d)
(excluding the projecting parts)

Mass

Approx. 260 g (9.2 oz.) (marine pack only)

Included items

Hand strap (1)
LCD hood (1)
Front attachment A (for DSC-T77) (1)*
Rear attachment A (for DSC-T77) (1)*
* Attached to the waterproof case at purchase.
Front attachment B (for DSC-T700) (1)
Rear attachment B (for DSC-T700) (1)
Grease (1)
O-ring (1)
Desiccant (two-pack) (1)
Spacer (1)
Set of printed documentation

Optional accessories


Arm kit VCT-MP1K
Underwater video light HVL-ML20M (must be used together with
arm kit VCT-MP1K and "InfoLITHIUM" (M series) battery pack,
(M series battery charger))
O-ring kit ACC-MP101

(Check this  icon on the package.)

Design and specifications are subject to change without notice.

MAIN FEATURE

Useable at a depth of up to 40 m (132 feet) underwater.

- This marine pack MPK-THG is exclusively for use with the Sony Digital Still Camera DSC-T700/T77. (Digital Still Camera for this case is not available in all countries/regions.)
- This marine pack is waterproof so the digital still camera can be used in the rain, snow, at the beach, or underwater.
- Using the marine pack with the digital still camera setting to  (Underwater) will enable you to record beautiful underwater images.

A loose or nipped O-ring, sand or dirt on the O-ring may cause water leaks under water.

Be sure to check the O-ring before use.

For details, read the O-ring Maintenance Manual.

MARINE PACK

SONY®

SECTION 1 EXPLODED VIEWS

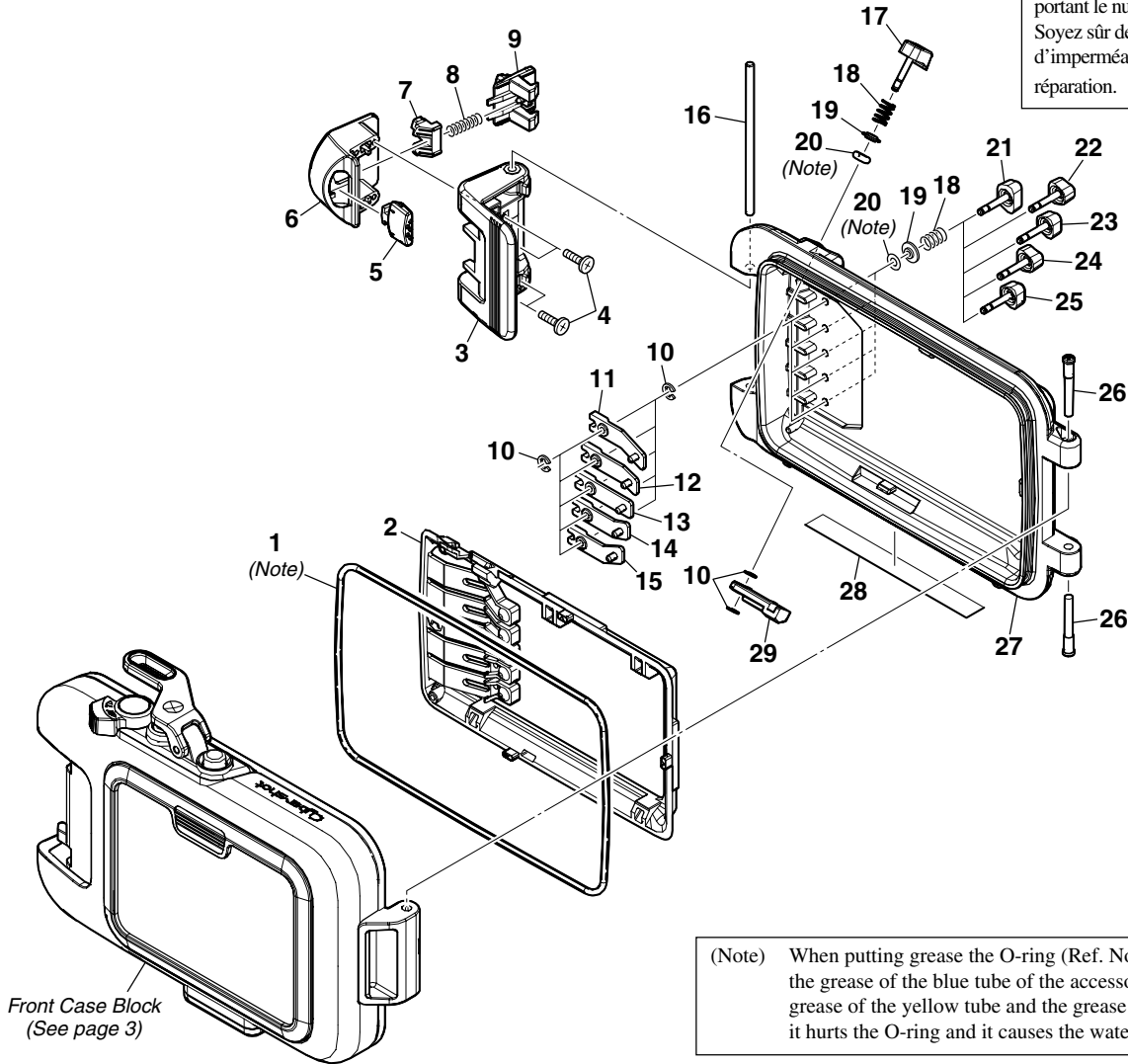
NOTE:

- -XX and -X mean standardized parts, so they may have some difference from the original one.
- Items marked "*" are not stocked since they are seldom required for routine service. Some delay should be anticipated when ordering these items.
- The mechanical parts with no reference number in the exploded views are not supplied.
- Abbreviation
CH: Chinese model
CND: Canadian model

The marked "△" are parts in relation to waterproof. Replace these components with Sony parts. Be sure to check up waterproof after repair.

La △ marquée sont des pièces par rapport à imperméable à l'eau. Ne les remplacer que par une pièce portant le numéro spécifié. Soyez sûr de vérifier vers le haut d'imperméable à l'eau après la réparation.

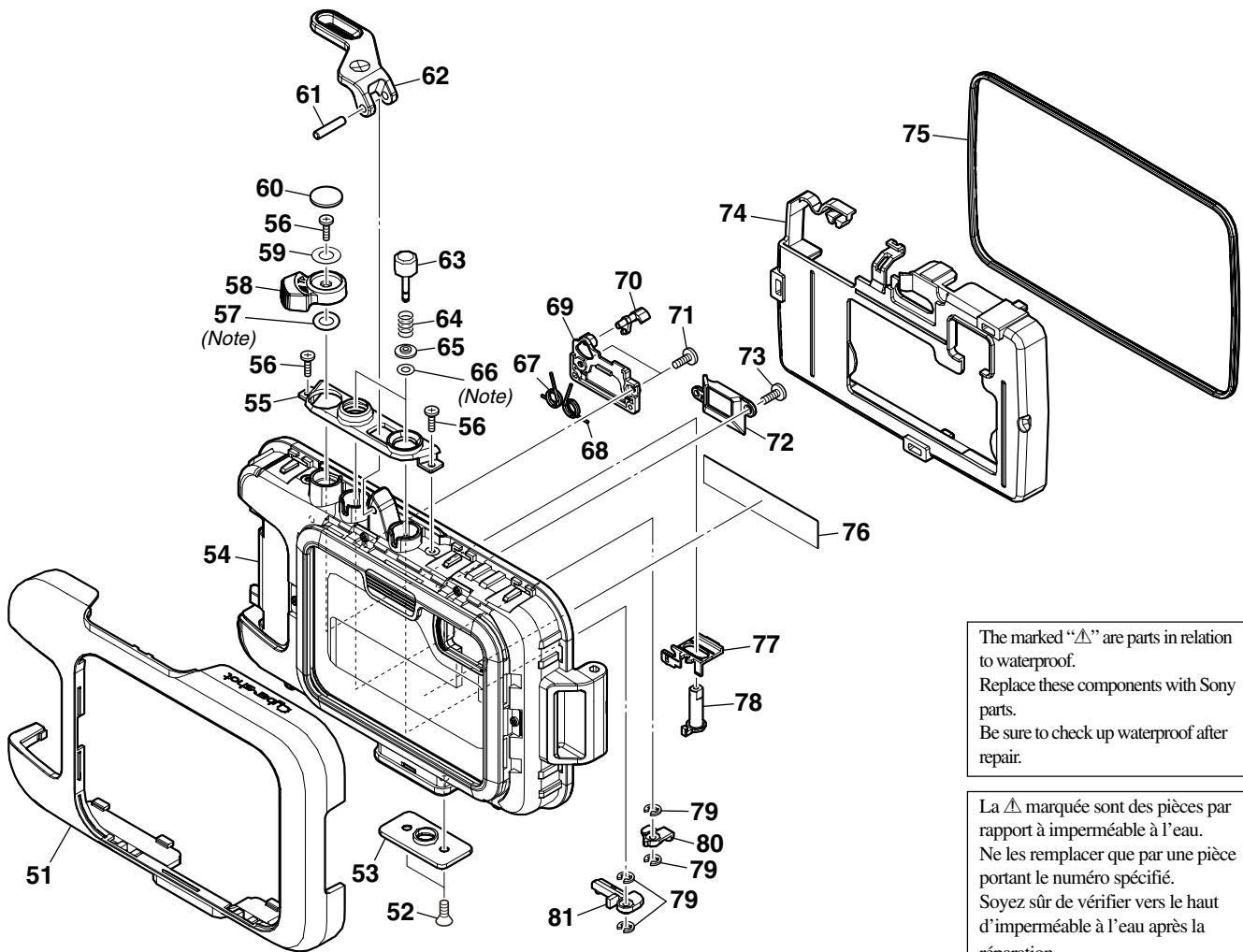
1-1. REAR CASE BLOCK



(Note) When putting grease the O-ring (Ref. No. 1, 20), always use the grease of the blue tube of the accessory. When using the grease of the yellow tube and the grease of the other Inc., it hurts the O-ring and it causes the water leakage.

Ref. No.	Part No.	Description	Remarks	Ref. No.	Part No.	Description	Remarks
△ 1	4-115-566-01	O RING, MAIN (Note)		16	4-119-161-01	SHAFT (DIA. 2.5X55), BUCKLE	
2	4-115-547-01	ATTACHMENT (R-A)		17	4-115-553-01	PUSH BUTTON (▶)	
3	4-115-560-01	BUCKLE		18	4-115-535-01	SPRING, PUSH BUTTON	
4	4-119-159-01	SCREW (1.7X4 #0-3), TP		19	4-115-536-01	RETAINER, O RING	
5	4-119-160-01	SLIDER (C), BUCKLE		△ 20	3-099-234-01	O RING (P2-A) (Note)	
6	4-115-562-01	COVER, BUCKLE		21	4-115-551-01	PUSH BUTTON A (📷 • 📷)	
7	4-115-564-01	SLIDER (B), BUCKLE		22	4-115-552-01	PUSH BUTTON B (📷)	
8	4-115-565-01	SPRING, BUCKLE		23	4-115-552-11	PUSH BUTTON B (📷)	
9	4-115-563-01	SLIDER (A), BUCKLE		24	4-115-552-21	PUSH BUTTON B (📷)	
10	2-589-173-01	RING (DIA. 1.5), E		25	4-115-552-31	PUSH BUTTON B (📷)	
11	4-115-555-01	LEVER (A), BUTTON		26	3-099-285-01	SHAFT, HINGE	
12	4-115-556-01	LEVER (B), BUTTON		27	4-115-550-01	CASE, REAR	
13	4-115-557-01	LEVER (C), BUTTON		* 28	3-209-949-01	LABEL, O RING CAUTION (US, CND, AEP)	
14	4-115-558-01	LEVER (D), BUTTON		* 28	3-209-950-01	LABEL, O RING CAUTION (CN) (CH)	
15	4-115-559-01	LEVER (E), BUTTON		29	4-115-554-01	LEVER (PLAY), BUTTON	

1-2. FRONT CASE BLOCK



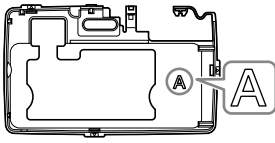
The marked "△" are parts in relation to waterproof.
Replace these components with Sony parts.
Be sure to check up waterproof after repair.

La △ marquée sont des pièces par rapport à imperméable à l'eau.
Ne les remplacer que par une pièce portant le numéro spécifié.
Soyez sûr de vérifier vers le haut d'imperméable à l'eau après la réparation.

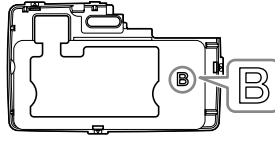
(Note) When putting grease the O-ring (Ref. No. 57, 66), always use the grease of the blue tube of the accessory. When using the grease of the yellow tube and the grease of the other Inc., it hurts the O-ring and it causes the water leakage.

Ref. No.	Part No.	Description	Remarks	Ref. No.	Part No.	Description	Remarks
51	4-115-518-01	PROTECTOR, FRONT CASE		67	4-115-530-01	SPRING (R), ZOOM	
52	3-099-238-01	TP2.6X8 (PLATE)		68	4-115-529-01	SPRING (L), ZOOM	
53	3-099-221-01	PLATE, TRIPOD SCREW		69	4-115-528-01	COVER, ZOOM	
54	X-2342-708-1	FRONT CASE ASSY (SERVICE)		70	4-115-526-01	SHAFT (B), ZOOM	
55	4-115-545-01	COVER, BUTTON		71	4-118-571-01	SCREW (1.7X3 #0-1), TP	
56	4-119-159-01	SCREW (1.7X4 #0-3), TP		72	4-115-524-01	REFLECTOR	
△57	2-591-447-01	O RING (P4) (Note)		73	2-593-524-01	SCREW, TIP1.7X3 SPECIAL	
58	4-115-531-01	KNOB, ZOOM (WT)		74	4-115-546-01	ATTACHMENT (F-A)	
59	4-115-533-01	SHEET, ZOOM ADHESIVE		75	4-115-567-01	PACKING, DROP PROTECTION	
60	4-115-532-01	COVER, ZOOM KNOB		76	2-055-632-01	LABEL (CN), CAUTION (CH)	
61	4-115-544-01	SHAFT, SHUTTER LEVER		76	3-087-452-01	LABEL, CAUTION (US, CND, AEP)	
62	4-115-543-01	LEVER, SHUTTER		77	4-115-527-01	SLIDER, ZOOM	
63	4-115-534-01	PUCH BUTTON D (POWER)		78	4-115-525-01	SHAFT (A), ZOOM	
64	4-115-535-01	SPRING, PUCH BUTTON		79	2-589-173-01	RING (DIA. 1.5), E	
65	4-115-536-01	RETAINER, O RING		80	4-115-541-01	LEVER (SHUTTER), BUTTON	
△66	3-099-234-01	O RING (P2-A) (Note)		81	4-115-542-01	LEVER (PW), BUTTON	

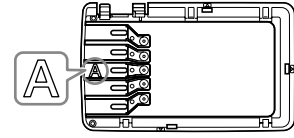
1-3. ACCESSORIES



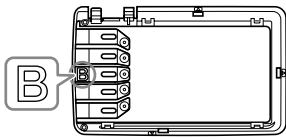
Front attachment A (1)
(ATTACHMENT F-A)
(for DSC-T77)
4-115-546-01



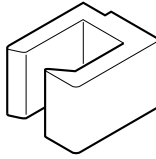
Front attachment B (1)
(ATTACHMENT F-B)
(for DSC-T700)
4-115-548-01



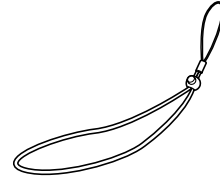
Rear attachment A (1)
(ATTACHMENT R-A)
(for DSC-T77)
4-115-547-01



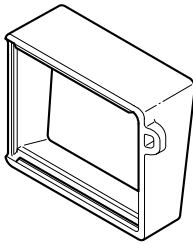
Rear attachment B (1)
(ATTACHMENT R-B)
(for DSC-T700)
4-115-549-01



Spacer (1)
3-941-348-01



Hand strap (1)
2-591-542-01



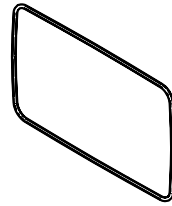
LCD hood (1)
3-273-528-01



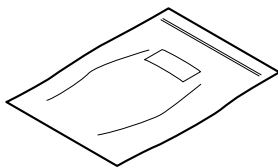
LCD hood strap (1)
3-099-290-01



Grease (1)
△ 2-582-620-01
(Note)



O-ring (1)
△ 4-115-566-01
(Note)



Desiccant (two-pack) (1)
3-876-901-01

(Note) When putting grease the O-ring (4-115-566-01), always use the grease of the blue tube of the accessory. When using the grease of the yellow tube and the grease of the other Inc., it hurts the O-ring and it causes the water leakage.

The marked "△" are parts in relation to waterproof.
Replace these components with Sony parts.
Be sure to check up waterproof after repair.

La △ marquée sont des pièces par rapport à imperméable à l'eau.
Ne les remplacer que par une pièce portant le numéro spécifié.
Soyez sûr de vérifier vers le haut d'imperméable à l'eau après la réparation.

Ref. No.	Part No.	Description	Remarks
	2-674-692-01	O RING MAINTENANCE MANUAL (JAPANESE, ENGLISH, FRENCH, GERMAN, ITALIAN, DUTCH, SPANISH, PORTUGUESE, SWEDISH, RUSSIAN, TRADITIONAL CHINESE, SIMPLIFIED CHINESE, KOREAN, ARABIC)	
	4-111-867-11	MANUAL, INSTRUCTION (ENGLISH, FRENCH, SPANISH) (US, CND, AEP)	
	4-111-867-21	MANUAL, INSTRUCTION (DUTCH, GERMAN, ITALIAN) (AEP)	
	4-111-867-31	MANUAL, INSTRUCTION (PORTUGUESE, SWEDISH, RUSSIAN) (AEP)	
	4-111-867-41	MANUAL, INSTRUCTION (TRADITIONAL CHINESE, SIMPLIFIED CHINESE, KOREAN, ARABIC) (AEP, CH)	

MPK-THG

SONY®

SERVICE MANUAL


Ver. 1.2 2009.04

US Model
Canadian Model
AEP Model
Chinese Model

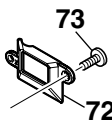
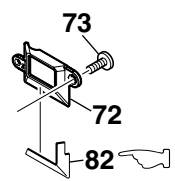
SUPPLEMENT-2

File this supplement with the service manual.
(09-008)

- Change of Repair Parts

 : Points added portion.

SECTION 1 EXPLODED VIEWS

Page	Former			New		
	Ref. No.	Part No.	Description	Ref. No.	Part No.	Description
2	5	4-119-160-01	SLIDER (C), BUCKLE	5	4-119-160-02	SLIDER (C), BUCKLE
	6	4-115-562-01	COVER, BUCKLE	6	4-115-562-02	COVER, BUCKLE
3						
54	X-2342-708-1	FRONT CASE ASSY (SERVICE)		54	X-2342-708-2	FRONT CASE ASSY (SERVICE)
				82	4-128-054-01	SHEET, LIGHT INTERCEPTION

Revision History

*: S.M. revised only top cover.

Ver.	Date	History	Contents	S.M. Rev. issued
1.0	2008.08	Official Release	—	—
1.1	2008.12	Supplement-1 (S1 DI08-311)	• Change of Repair Parts	Yes*
1.2	2009.04	Supplement-2 (S2 09-008)	• Change of Repair Parts Replacement of the SUPPLEMENT-1 with the SUPPLEMENT-2. Please discard the SUPPLEMENT-1.	Yes*