

Haier

Household Dishwasher

SERVICE MANUAL



Models

HDB18EB/HDB18EBS

● Features

- **Overflow Protection Function**
- **5 Programs: Pots and Pans, Normal, Light, Glassware, Rinse & Hold**
- **Super-Capacity for 8 settings**
- **18 inches width**

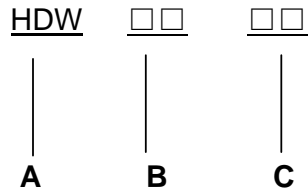
Haier

Dishwasher

Model: HDB18EB

1.Product Code Illumination and Series Introduction

Model Identification



A: Haier Dishwasher

B: The width of dishwasher

C: Series of factory design

Examples:

HDB18EB

It represents automatic spraying Haier Dishwasher; the dishwasher's width is 18 inches.

2.Features

2.1 Overflow Protection Function

2.2 5 Programs: Pots and Pans, Normal, Light, Glassware, Rinse & Hold

2.3 Super-Capacity for 8 settings

2.4 18 inches width

Haier

Dishwasher

Model: HDB18EB

IMPORTANT SAFETY INSTRUCTIONS

Warning – To reduce the risk of fire, electric shock, or injury to persons when using your appliance,

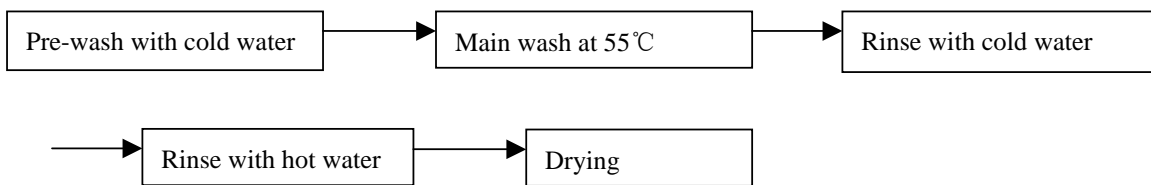
follow basic precautions, including the following:

1. Read all instructions before using the appliance.
2. Use this appliance only for its intended purpose as described in this use and care guide.
3. Use only automatic dishwashing detergent and rinse agents recommended for use in this appliance and keep them out of the reach of children because they are corrosive and can be harmful.
4. This appliance must be properly installed in accordance with the installation instructions before it is used.
5. Never unplug your appliance by pulling on the power cord. Always grasp the plug firmly and pull straight out from the outlet.
6. Replace immediately worn power cords, loose plugs/power outlets.
7. Unplug your appliance before cleaning or before making any repairs.
8. Do not open the dishwasher door immediately after completion of wash process or during the operation as hot air/steam may cause personal injury. Press the door latch, wait few seconds by allowing cold air to go in and then open the door.
9. Do not operate your appliance in the presence of explosive fumes.
10. Do not add or mix any flammable or explosive substances to the wash.
11. Appliance loading door must be closed during the operation of the machine.
12. Do not operate your appliance when parts are missing or broken.
13. Do not use this appliance for commercial dishwashing purpose.
14. Do not operate this appliance unless all enclosure panels are properly in place.
15. Do not tamper with controls.
16. To reduce risk of injury do not allow children to play in or on the appliance. Close supervision of children is necessary when the appliance is used near children.
17. This appliance must be connected to proper electrical outlet with the correct electrical supply.
18. Proper grounding must be ensured to reduce the risk of shock and fire. **DO NOT CUT OR REMOVE THE GROUNDING PLUG.** If you do not have a three-prong electric receptacle outlet in the wall, have a certified electrician install the proper receptacle. The wall receptacle **MUST** be properly grounded.
19. Hydrogen gas may be produced if the water heater has not been used in more than 2 weeks. This could be explosive and can explode under certain circumstances. If this is the case, turn on all the hot faucets and let the hot water run for a few minutes before using this appliance. This will let the trapped hydrogen escape. To avoid an accident, as hydrogen gas is flammable and can explode, do not turn on an electric appliance, smoke, light a match/lighter or use a flame.
20. Do not repair or replace any part of the appliance or attempt any servicing unless specifically recommended in the user-repair instructions that you understand and have skills to carry out.
21. To reduce the risk of electric shock or fire, do not use extension cords or adapters to connect the unit to electrical power source.
22. Do not wash any heat sensitive or any other items that are not designed for automatic dishwasher. Items not dishwasher safe could become deformed or melt and create a potential fire hazard.
23. Do not use this dishwasher outdoors.
24. Do not leave the dishwasher door open to dry dishware while children are around the counter top. Close supervision and observation needed when children are around the dishwasher.
25. Do not abuse, sit on or stand on the door or dish rack of the dishwasher.
26. Do not touch the heating element during or immediately after use, as it may be very hot.

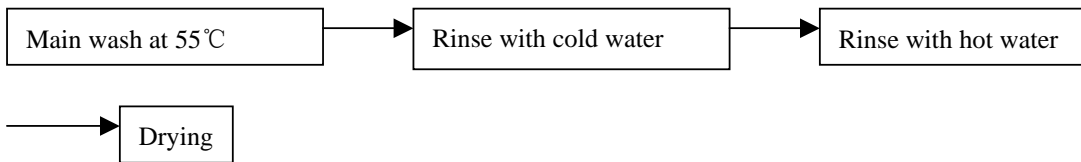
- 27. Load sharp objects such as knives and forks upside down to reduce the risk of cut type injuries.
- 28. Do not wash plastic items unless they are marked dishwasher safe. Check the manufacturer's recommendations for items not marked.
- 29. Do not load sharp items near the door; you could damage the door seal.
- 30. When removing an old dishwasher from service or discarding it, remove the front door.
- 31. Disconnect electrical power and water inlet hose to dishwasher before servicing.

3. Function Schedule

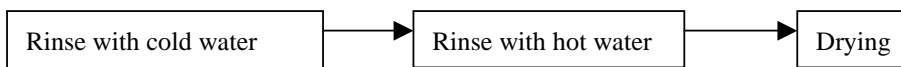
1. Pots and Pans wash



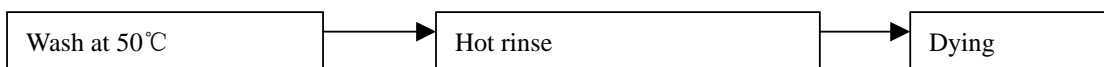
2. Normal Wash



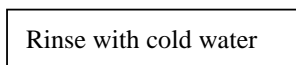
2. Light Wash



3. Glassware wash



4. Rinse & Hold



Maintenances Services and Trouble Shooting

4.Maintenances Service and Trouble Shooting

4.1 Maintenances Services

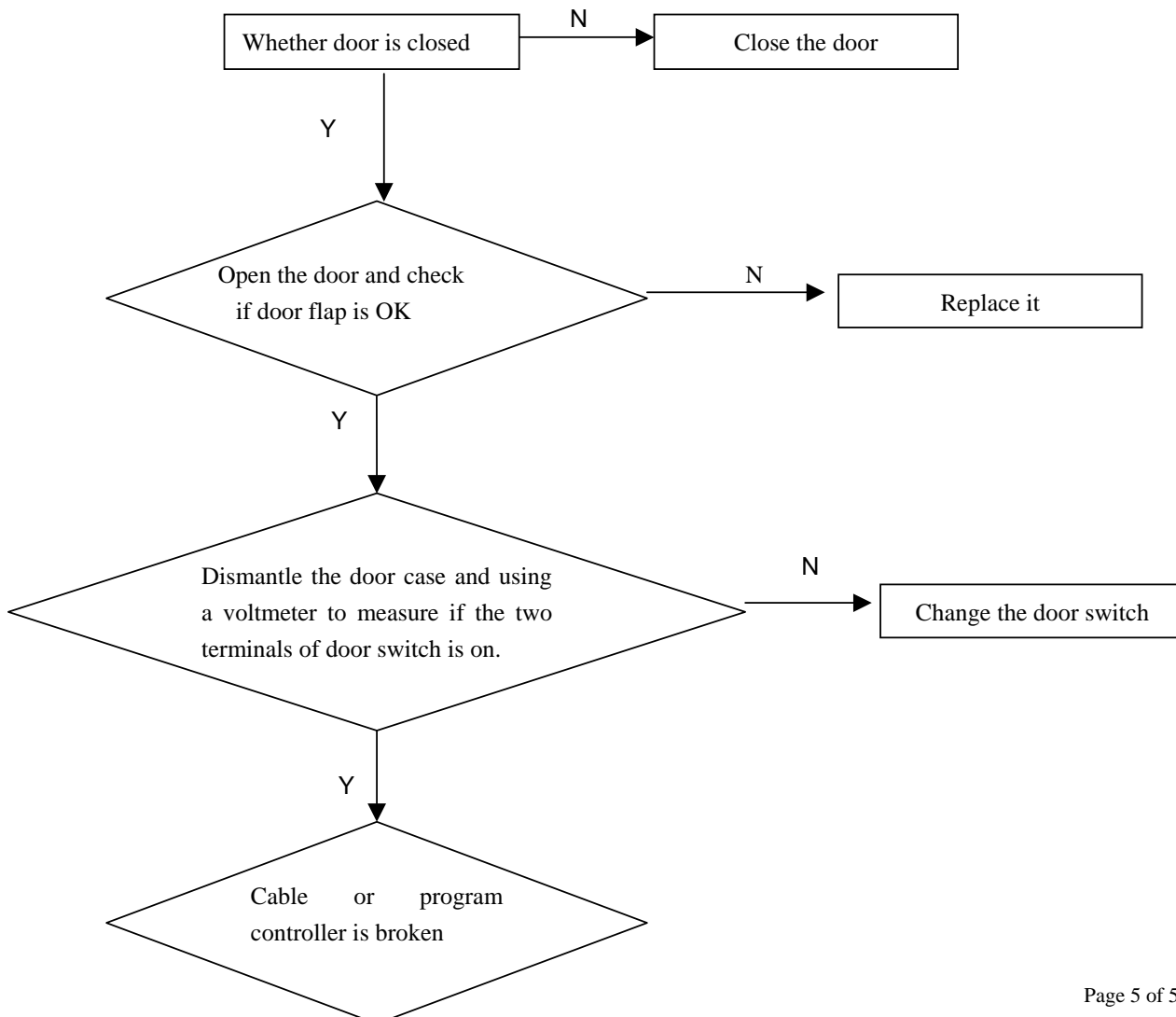
It may occur that the dishwasher does not function or does not function properly Before calling for assistance,let us see what can be done first:have you forgotten to press one of the buttons or to perform an essential operation?

4.2 Trouble Shooting

analysis of the common breakdowns

Door switch trouble

Phenomenon: the dishwasher does not work

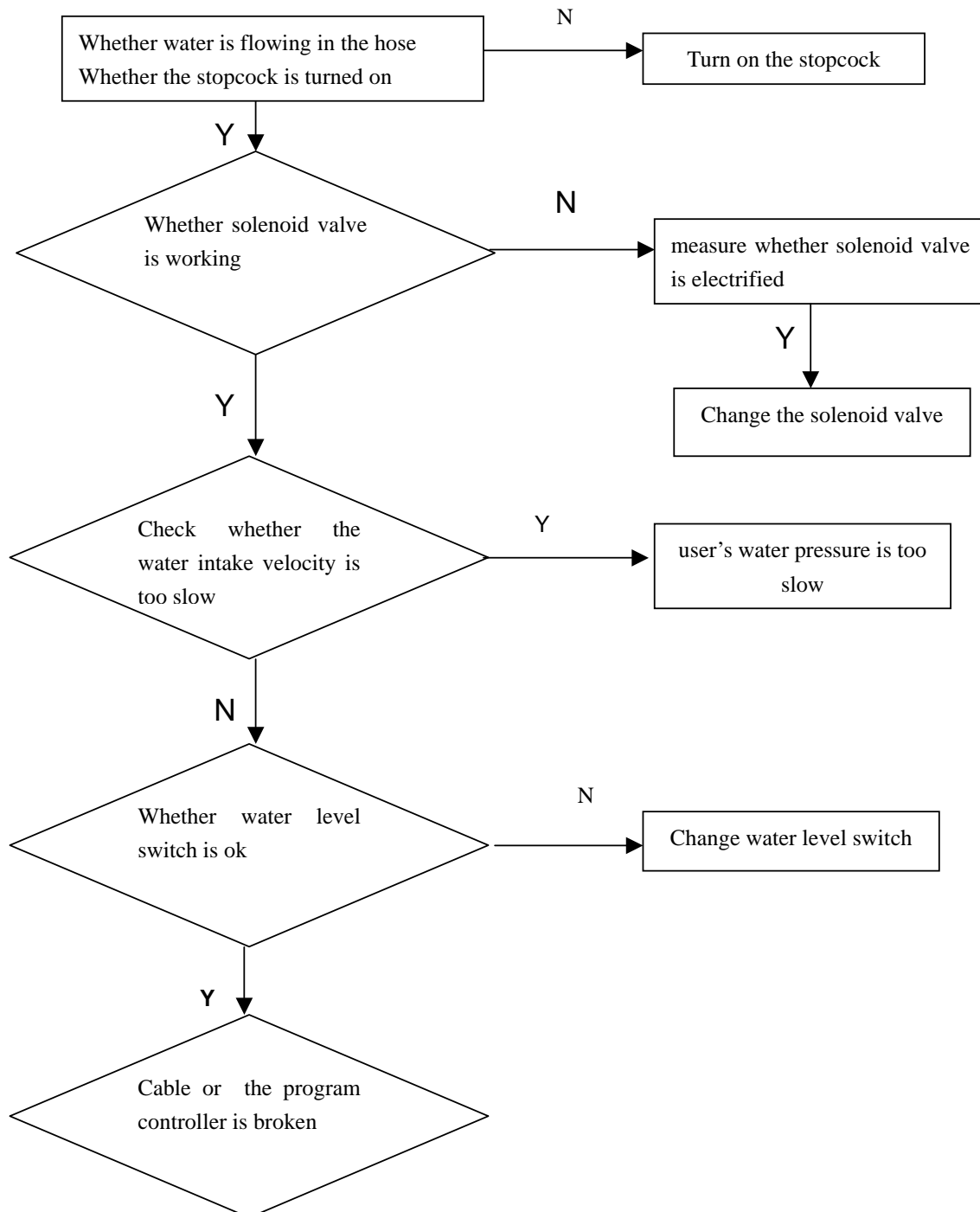


Maintenances Services and Trouble Shooting

analysis of the common breakdowns

water supply trouble

Phenomenon: water level cannot reach the required location

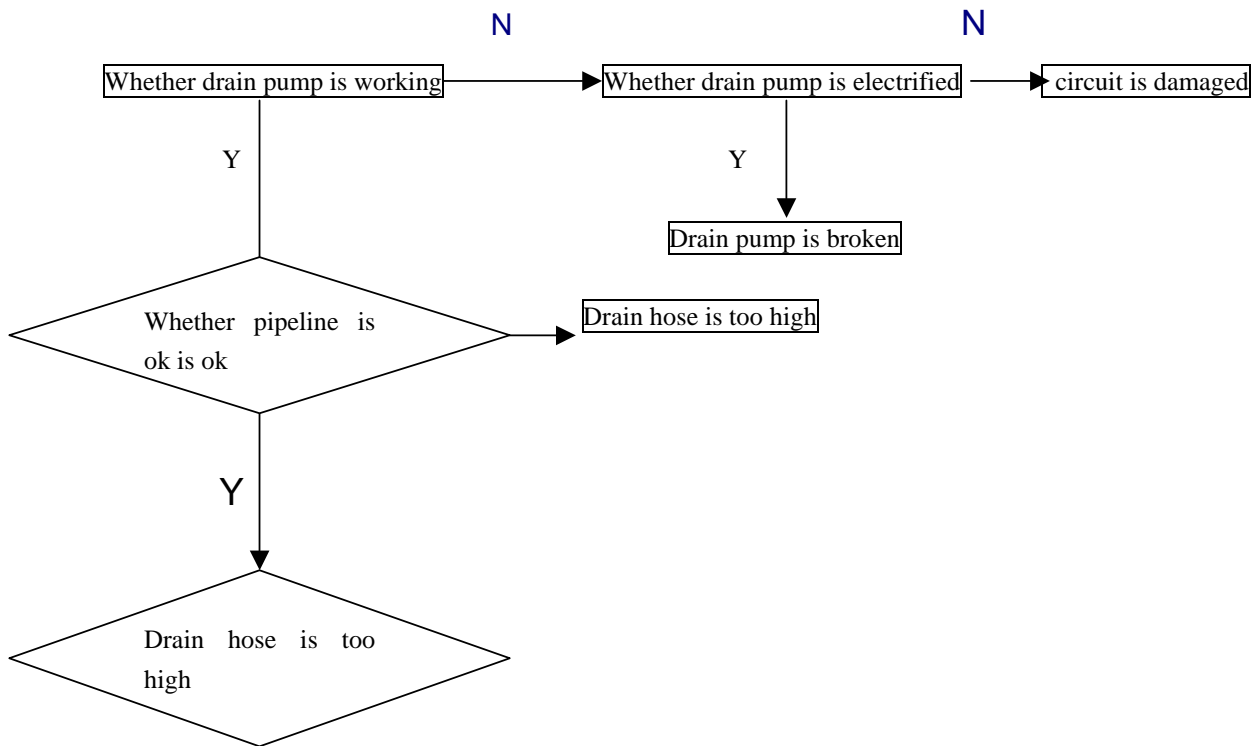


Maintenances Services and Trouble Shooting

analysis of the common breakdowns

Drain pump trouble

Phenomenon: water cannot be drained



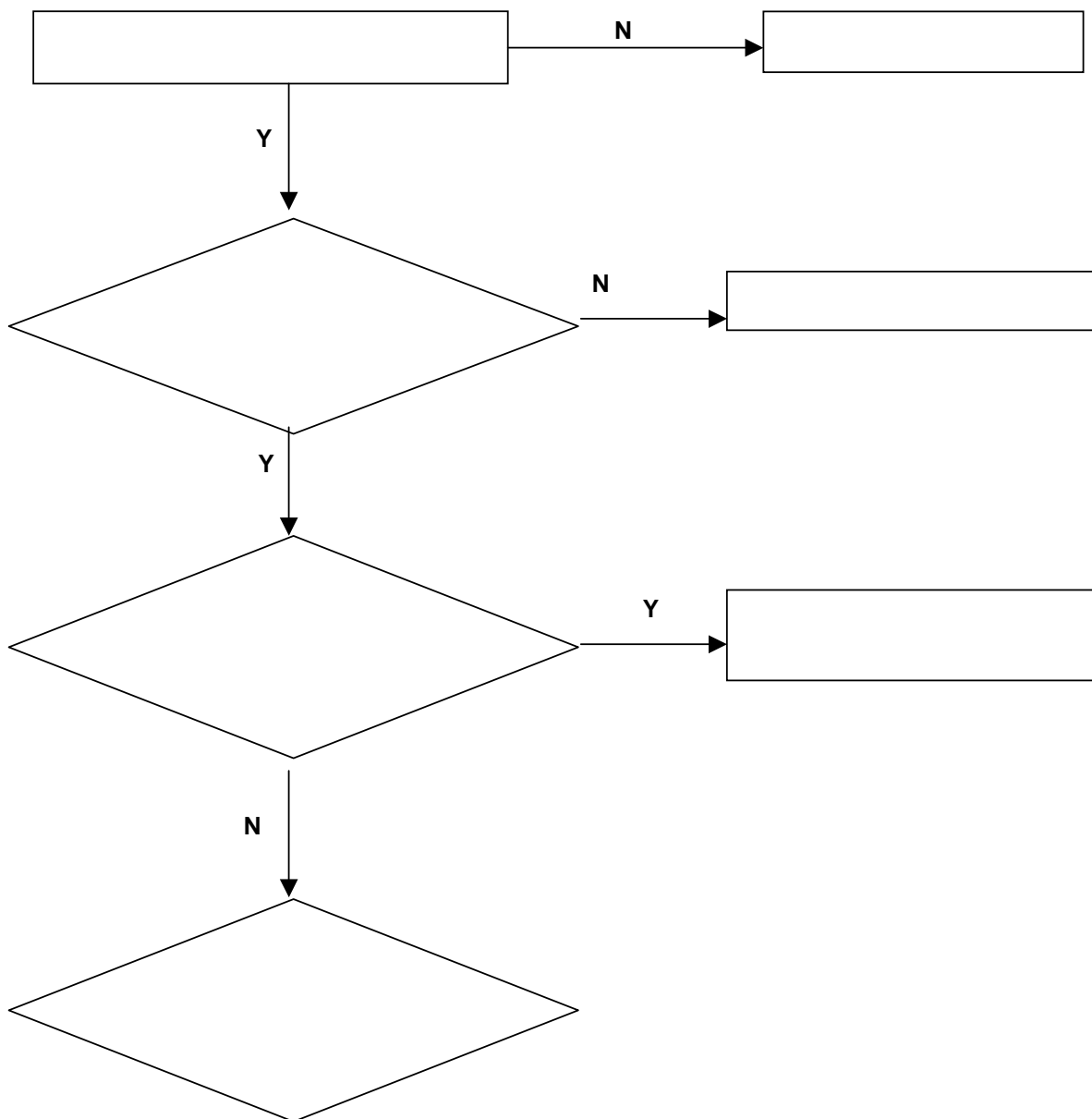
Maintenances Services and Trouble Shooting

analysis of the common breakdowns

Heating trouble

Phenomenon: water cannot be heated

Check:

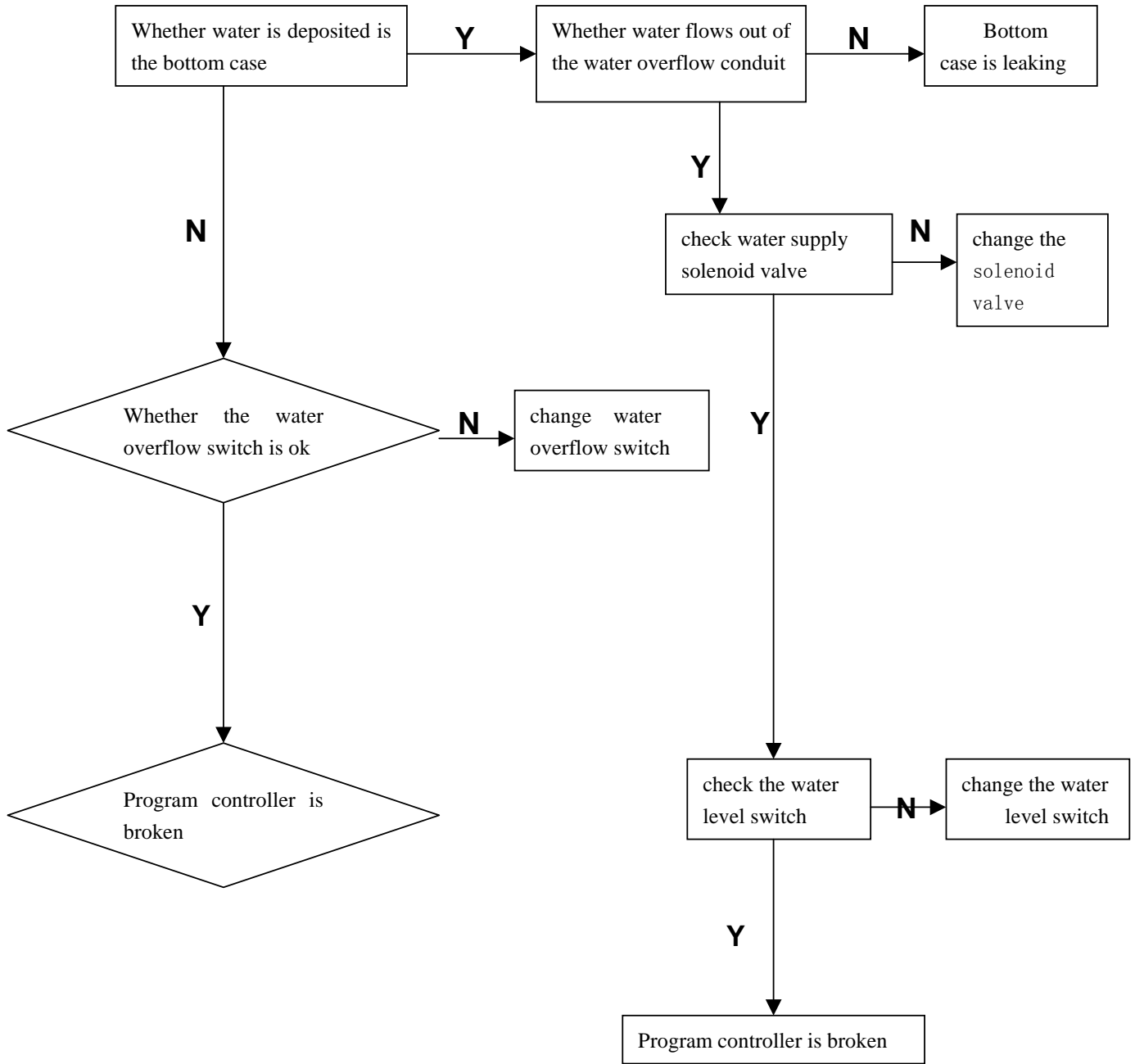


Maintenances Services and Trouble Shooting

analysis of the common breakdowns

Water overflow trouble

Phenomenon: drain pump keep on working



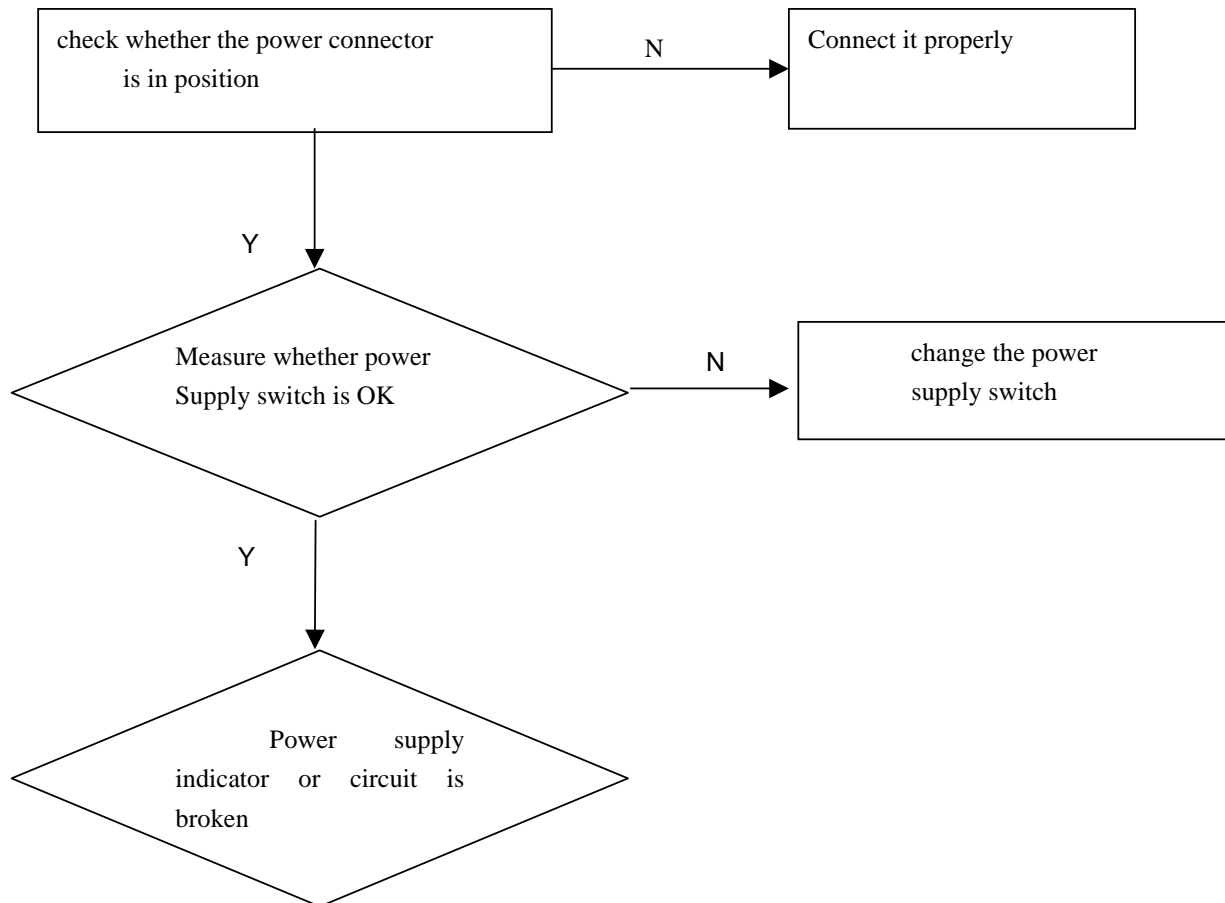
Maintenances Services and Trouble Shooting

analysis of the common breakdowns

Power supply trouble

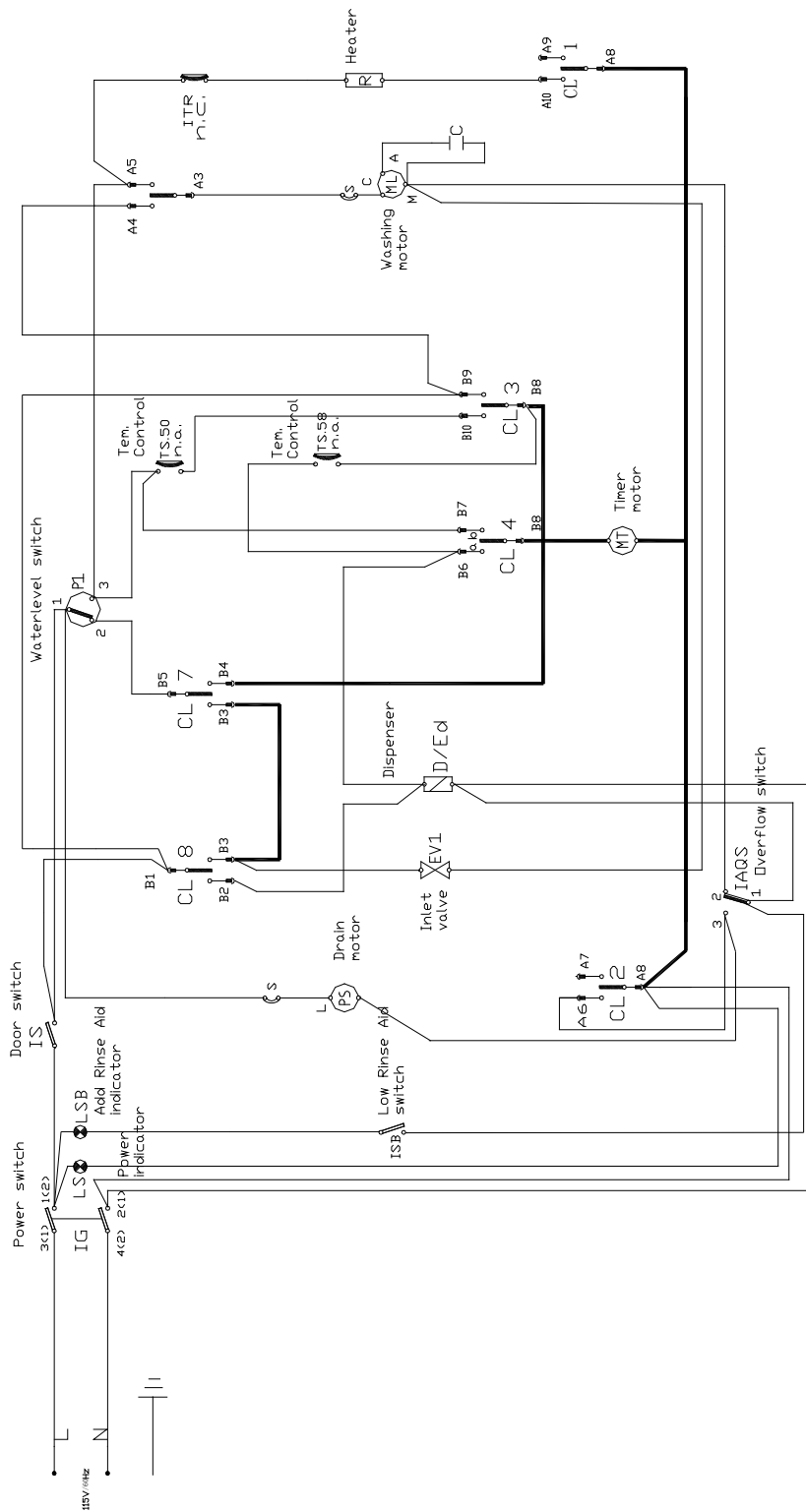
Phenomenon: water cannot be heated

Check:



Circuit Diagram

5. Circuit Diagram



Sincere Forever