



INSTALLATION INSTRUCTIONS
Tech Support
856-768-5700 EXT 2
TechSupport@LEDGlow.com

6pc Flexible Million Color LED Interior Kit

Warning: Please check your state and local laws before installing this LED interior lighting kit. Every state has different policies and procedures in place regarding aftermarket vehicle accessories. LEDGlow is not responsible for any fines that you may receive while using this interior kit. **This kit is for off road use only.**

Warning: The installation of this kit is recommended to be installed by a licensed professional. The improper installation of this kit will void all warranties.

The control box that is used to power the interior tubes must be installed in a dry location! Having this part exposed to water or the elements will cause the kit's controller to fail. Any water damage or corrosion to this part will VOID all warranties.

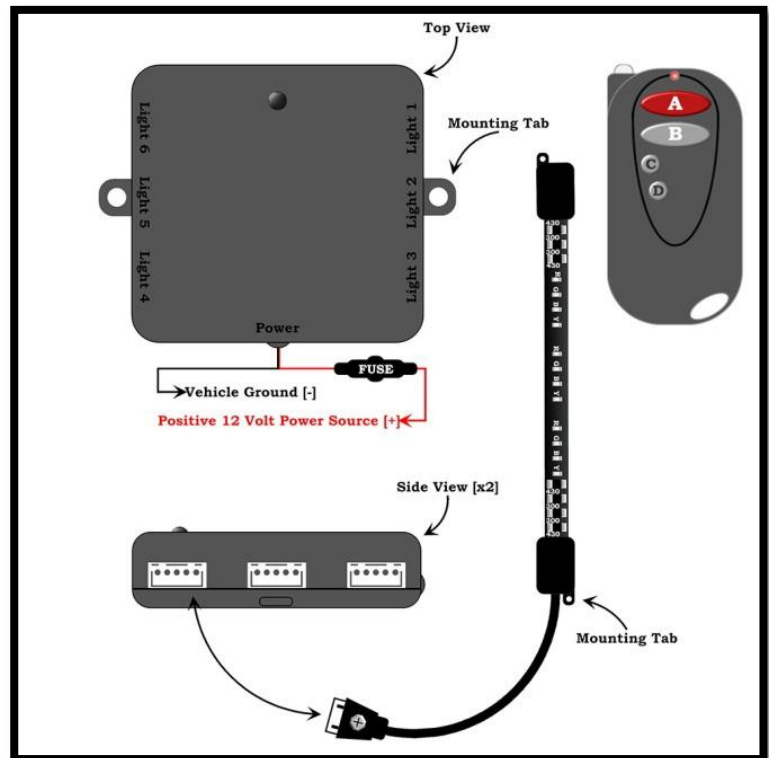
PLEASE READ THE FOLLOWING INSTRUCTIONS THOROUGHLY BEFORE INSTALLING AND OPERATING THIS LED INTERIOR KIT.

Interior Kit Includes:

- (6) 8 Inch Tubes
- (1) Control Box
- (1) Wireless Remote
- (14) Screws
- (4) Mounting Brackets
- 3M Tape

Interior Kit Installation:

1. Arrange the interior tubes where you plan on installing them and temporarily power the kit to ensure proper functionality before installing. Once you test the kit and determine it is functioning properly, disconnect the power from the kit and begin the installation.
2. Each interior tube can be mounted virtually anywhere in your vehicle. Some good locations are under the dash in the foot well area, under the driver and passenger seats facing the foot well area, under the back of the driver and passenger seats facing the back seat or even in the trunk.
3. Find a safe, secure, and dry location to mount the control box. We recommend mounting the control box in your center console, under the seat or in your glove compartment by using the included screws or 3M tape.
4. Mount the first tube to your desired location with the included screws. If you do not want to use the supplied screws, you can use 3M tape, wire ties, or even Velcro. Make sure the tube and the lead power wire do not come in contact with any moving parts such as, the pedals, steering column, and/or seat tracks.
5. Mount the remaining tubes to your desired locations in the same way you did in the previous step. Again, be sure all tubes and lead power wires are not in the way of any moving parts such as the pedals, steering column, and/or seat tracks.
6. Connect the tubes to the control box that is already installed in a readily accessible area free of moisture and heat.
Any damage to your kit as a result of moisture or heat will void your warranty.
7. Now, that your control box and tubes are mounted, secure and hide all of the lead wires with zip ties.



INSTALLATION INSTRUCTIONS



Tech Support
856-768-5700 EXT 2
TechSupport@LEDGlow.com

8. This interior kit can be powered one of three ways:
 - Connect the red power wire to any 12 volt source and the black wire to a bare metal ground source. If you need to extend the power wires, be sure to only use 16 or 18 gauge automotive grade wire. If you are running the power wire to the battery, it must go through the firewall by using an existing grommet or by drilling a hole and adding a new grommet, which is available at any auto parts store. Be sure to install the fuse within 6 inches of the power source. If you connect the power wire to a switched 12 volt source, the interior kit may not remember the color and pattern it was last on before turning off the vehicle. If you connect the power wire to a constant 12 volt source, the interior kit will remember the last color and pattern it was on prior to turning the vehicle off. **Do not run the wire through the door jam, the wire can be pinched and the will void all warranties.**
 - This interior kit can also be powered directly from your vehicle's fuse box. If you are powering the kit via the fuse box, LEDGlow recommends that you install the wire using LEDGlow's Expandable Circuit which is available on www.LEDGlow.com
 - For a quick and easy install, LEDGlow offers a Cigarette Lighter Adapter that allows you to simply connect the red and black wires to the attachment and plugging it into your cigarette lighter for power. This is available at www.LEDGlow.com.

Wireless Remote Functions

- **Button A:** Color Change Mode & Pattern Changing Mode
- **Colors Included:**
 - Red
 - Green
 - Blue
 - Orange
 - Yellow
 - Purple
 - Fire Orange
 - Aqua
 - Light Green
 - Light Blue
 - White
 - Light Yellow
 - Ice Blue
 - Violet
 - Cool White
- **Modes/Patterns**
 - Solid Color On Mode
 - Scan Mode
 - Scan Mode 2
 - Scan Mode 3
 - Flash Pattern
 - Flash Pattern 2
 - Flash Pattern 3
 - Flash Pattern 4
 - Color Fade Mode
 - Color Cycle Mode
- **Button B:** Power ON/OFF (Press and Hold for 3 Seconds)
 - During Operation, press this button once to PAUSE the current color changing function. Press it a second time to RESUME with the color changing function.
- **Button C:** Speed Up Function
- **Button D:** Speed Down Function

For accessories, replacement parts and/or technical support, please visit www.LEDGlow.com for more information.



INSTALLATION INSTRUCTIONS
Tech Support
856-768-5700 EXT 2
TechSupport@LEDGlow.com

ONE YEAR NON-TRANSFERRABLE LIMITED WARRANTY AND DISCLAIMER

LEDGlow Lighting, LLC ("LEDGlow") warrants to the original retail consumer purchaser, and not any other purchaser or subsequent owner, that this Product will be free from defects in material or workmanship for a period of **one (1) year** from the purchase date. **This warranty does not cover any Product that is (1) installed incorrectly, or (2) damaged by collisions, vandalism, other accidents, or similar causes.**

For a period of **one (1) year** from the date of purchase, at no charge to the Purchaser, LEDGlow will repair or replace this Product if it is determined by LEDGlow to be defective. After the warranty period, the Purchaser must pay all charges for parts and labor.

Coverage under this warranty is only valid within the United States, including its territories, as well as in certain other countries. Purchasers should check our website, www.LEDGlow.com, to determine the warranty coverage in the countries in which they are located.

LEDGlow does **not warrant the installation** of the Product, which is the sole responsibility of the Purchaser. Installation should be done by licensed professionals. Improper installation may cause damage to the Product and any vehicle in which it is installed, and may cause burns and electrical injury to individuals. LEDGlow's warranty does not cover any expenses incurred in removing Products that are defective or re-installing replacement Products in their place.

During the warranty period, to have the Product repaired or replaced, the Purchaser must return the Product, freight prepaid by the Purchaser, to LEDGlow (but for customers in the contiguous United States, LEDGlow will pay the shipping charges if any Product fails during the first thirty (30) days after purchase). The Product must be returned in its original carton or in a similar package affording an equal degree of protection. LEDGlow will return the repaired or replaced Product, freight prepaid, to the Purchaser. LEDGlow does not provide Purchasers with temporary replacement units during the warranty period or at any other time.

This limited warranty is non-transferrable and will automatically terminate if the original retail consumer purchaser resells the Product or transfers the vehicle on which the Product is installed. An "original retail consumer purchaser" is a person who originally purchases the Product, or a gift recipient of a new Product that is in its original packaging and unopened.

This limited warranty is subject to all of the following terms and conditions:

TERMS AND CONDITIONS

1. NOTIFICATION OF CLAIMS; WARRANTY SERVICE: IF PURCHASER BELIEVES THAT A PRODUCT IS DEFECTIVE IN MATERIAL OR WORKMANSHIP, WRITTEN NOTICE WITH AN EXPLANATION OF THE CLAIM SHALL BE GIVEN PROMPTLY BY PURCHASER TO LEDGLOW. ALL WARRANTY CLAIMS MUST BE MADE WITHIN THE WARRANTY PERIOD, AND ANY PRODUCTS RETURNED TO LEDGLOW MUST BE SHIPPED IN ACCORDANCE WITH LEDGLOW'S PROCEDURES (INCLUDING USE OF RMA NUMBERS SUPPLIED BY LEDGLOW AFTER NOTIFICATION). THE REPAIR OR REPLACEMENT OF ANY PRODUCT OR PART THEREOF SHALL NOT EXTEND THE ORIGINAL WARRANTY PERIOD. THE SPECIFIC WARRANTY ON THE REPAIRED PART ONLY SHALL BE IN EFFECT FOR A PERIOD OF NINETY (90) DAYS FOLLOWING THE REPAIR OR REPLACEMENT OF THAT PART, OR THE REMAINING PERIOD OF THE PRODUCT WARRANTY, WHICHEVER IS GREATER.

2. EXCLUSIVE REMEDY; ACCEPTANCE: PURCHASER'S EXCLUSIVE REMEDY AND LEDGLOW'S SOLE OBLIGATION IS TO SUPPLY (OR PAY FOR) ALL LABOR NECESSARY TO REPAIR ANY PRODUCT FOUND TO BE DEFECTIVE WITHIN THE WARRANTY PERIOD AND TO SUPPLY NEW OR REBUILT REPLACEMENTS FOR DEFECTIVE PARTS. LEDGLOW WILL REFUND THE PURCHASE PRICE FOR SUCH PRODUCT ONLY IF REPAIR OR REPLACEMENT FAILS TO REMEDY THE DEFECT. PURCHASER'S FAILURE TO MAKE A CLAIM AS PROVIDED IN PARAGRAPH 1 ABOVE OR CONTINUED USE OF THE PRODUCT SHALL CONSTITUTE AN UNQUALIFIED ACCEPTANCE OF SUCH PRODUCT AND A WAIVER BY PURCHASER OF ALL CLAIMS THEREON.

3. EXCEPTIONS TO LIMITED WARRANTY: LEDGLOW SHALL HAVE NO OBLIGATION TO PURCHASER WITH RESPECT TO ANY PRODUCT THAT IS SUBJECTED TO ANY OF THE FOLLOWING: ABUSE, IMPROPER USE, NEGLIGENCE, ACCIDENT, MODIFICATION, FAILURE TO FOLLOW THE OPERATING PROCEDURES OUTLINED IN THE USER'S MANUAL, FAILURE TO FOLLOW THE MAINTENANCE PROCEDURES IN THE SERVICE MANUAL FOR THE PRODUCT, ATTEMPTED REPAIR BY NON-QUALIFIED PERSONNEL, OPERATION OF THE PRODUCT OUTSIDE OF THE PUBLISHED ENVIRONMENTAL AND ELECTRICAL PARAMETERS, OR IF THE PRODUCT'S ORIGINAL IDENTIFICATION (TRADEMARK, SERIAL NUMBER) MARKINGS HAVE BEEN DEFACED, ALTERED, OR REMOVED. LEDGLOW EXCLUDES FROM WARRANTY COVERAGE PRODUCTS SOLD AS IS AND/OR WITH ALL FAULTS. LEDGLOW ALSO EXCLUDES FROM WARRANTY COVERAGE ANY CONSUMABLE ITEMS SUCH AS FUSES AND BATTERIES.

All software and accompanying documentation furnished with, or as part of the Product is furnished "AS IS" (i.e., without any warranty of any kind), except where expressly provided otherwise in any documentation or license agreement furnished with the Product.

PROOF OF PURCHASE; REGISTRATION: The Purchaser's dated bill of sale must be retained as evidence of the date of purchase and to establish warranty eligibility. Registration of any Product or of this limited warranty is voluntary, and failure to register will not diminish any rights available under this warranty.

DISCLAIMER OF WARRANTY

EXCEPT FOR THE FOREGOING WARRANTIES, LEDGLOW HEREBY DISCLAIMS AND EXCLUDES ALL OTHER WARRANTIES, EXPRESS OR IMPLIED, INCLUDING, BUT NOT LIMITED TO ANY IMPLIED WARRANTIES OF MERCHANTABILITY, FITNESS FOR A PARTICULAR PURPOSE, OR ANY WARRANTY WITH REGARD TO ANY CLAIM OF INFRINGEMENT THAT MAY BE PROVIDED IN SECTION 2-312(3) OF THE UNIFORM COMMERCIAL CODE OR IN ANY OTHER STATE STATUTE.

LIMITATION OF LIABILITY

THE LIABILITY OF LEDGLOW, IF ANY, AND PURCHASER'S SOLE AND EXCLUSIVE REMEDY FOR DAMAGES FOR ANY CLAIM OF ANY KIND WHATSOEVER, REGARDLESS OF THE LEGAL THEORY AND WHETHER ARISING IN TORT OR CONTRACT, SHALL NOT BE GREATER THAN THE ACTUAL PURCHASE PRICE OF THE PRODUCT FOR WHICH SUCH CLAIM IS MADE. IN NO EVENT SHALL LEDGLOW BE LIABLE TO PURCHASER FOR ANY SPECIAL, INDIRECT, INCIDENTAL, OR CONSEQUENTIAL DAMAGES OF ANY KIND INCLUDING, BUT NOT LIMITED TO, COMPENSATION, REIMBURSEMENT OR DAMAGES ON ACCOUNT OF THE LOSS OF PRESENT OR PROSPECTIVE PROFITS OR FOR ANY OTHER REASON WHATSOEVER.

GOVERNING LAW: This non-transferrable limited warranty shall be governed by the law of the State of New Jersey, U.S.A., and the United States of America, excluding their conflicts of laws principles. The courts of Camden County, New Jersey, shall have the exclusive jurisdiction over any legal action with respect to this warranty.

This limited warranty gives specific legal rights. You may also have other rights that may vary from state to state or from country to country. Some states or countries do not allow the exclusion or limitation of incidental or consequential damages, so the above limitations and exclusions may not apply to you. You are advised to consult applicable state or country laws for a full determination of rights.