



DRUG TERMINATOR

| | |
|---|-----------|
| Contact Information | 1 |
| Introduction | 1 |
| Product Description..... | 2 |
| Safety Precautions | 3 |
| Component Identification | 4 |
| Assembly Instructions | 5 |
| Power Supply Selection..... | 9 |
| Selecting a Drum | 9 |
| Required Accessories..... | 10 |
| Preparing to Burn..... | 10 |
| Pre-Burn Instructions | 11 |
| Destroying Drugs | 13 |
| Tending Burn | 14 |
| Terminating Burn | 14 |
| Preventive Maintenance | 15 |
| Removing Motors | 15 |
| Air Filters | 15 |
| External Spark Deflectors | 15 |
| Parts List Figure #1 | 16 |
| Drug Terminator 110V Parts List..... | 17 |
| Drug Terminator 220V Parts List..... | 18 |
| Replacement Parts | 19 |
| Problem Solving..... | 20 |
| Warranty | 21 |

This manual contains information on the operation and maintenance of the Drug Terminator Incinerator manufactured by Elastec/American Marine. All data in this publication is based on the latest product information.

Elastec/American Marine reserves the right to make changes at any time without notice and without incurring any obligations.

If a problem is encountered, or if you have questions about your Elastec/American Marine equipment, please call one of our consultants at **(618) 382-2525**.

Elastec/American Marine products are designed to provide safe and dependable service when operated according to instructions. It is important to read and understand this manual before operating this system. Failure to do so may result in personal injury or equipment damage.

Your serial number is _____

★ SERIAL NUMBER MUST BE INCLUDED WHEN ORDERING PARTS.

WARNING: Not for use with materials containing liquids such as gasoline or paint thinners. All materials must have a flash point higher than 100 degrees Fahrenheit (38 degrees Celsius)!

CONTACT INFORMATION

Elastec/American Marine
1309 West Main Street
Carmi, IL 62821
USA

Telephone: +1 (618) 382-2525
Fax: +1 (618) 382-3610
E-mail: elastec@elastec.com
Website: www.elastec.com

This innovative, easy-to-use incinerator is specifically designed for safe and efficient disposal of confiscated drugs. It is used by local law enforcement when other disposal options are limited. Drug Terminator is wood- or charcoal-fired. Two high velocity electric blowers create a cyclone of intense heat, eliminating illicit drugs quickly and completely. It burns clean and smoke-free. The volume of material is reduced to an average of 1% ash. Non-combustible drug paraphernalia is sterilized by heat and can be disposed in municipal waste.

Refer to Components Identification found on Page 5 to identify the major components to be discussed in this manual. Listed below are some of those components:

- **Blowers:** Two blowers behind the motor cover draw air into the plenum. The air feeds to the drum through the air hose and lid.
- **Spark Screen and Spark Deflector:** The lid has two elements to block emissions of burning material: the spark screen on top and the internal spark deflector, which can be seen beneath the exhaust vent in the lid.
- **Clamps:** Four clamps hold the lid in place during burning.
- **Porthole and Porthole Cover:** The porthole can be found on the lid and can be closed by rotating the cover back into place.

CAUTION: If unit has been in operation, the porthole cover will be hot. Use the end of the stir rod to close to avoid injury.

- **Air Shutter Control:** Regulates air flow and controls the blower output.
- **Saf-Start Unit:** Safety device that prevents Drug Terminator from restarting automatically after a power disturbance or interruption, even if the switch is left in the ON position.

Before the first burn, the operator should practice mounting the lid on the drum and securing it with the clamps. It is also a good idea to walk through the ignition procedure a few times prior to the first burn to become acquainted with the operation of the system.

When operating your Drug Terminator, basic safety precautions (including the following) should always be followed to reduce the risk of fire, electric shock and injury to persons :

1. Read and understand all instructions.
2. Follow all warnings and instructions marked on the product.
3. Disconnect the Drug Terminator from the power source when there is a chance that water may come in contact with the electrical connection.
4. Place the Drug Terminator on stable ground to keep the unit from tipping or falling over. It must stand free and clear of surrounding buildings, vegetation or other combustible material. Please allow 10 feet (3 meters) of space. Care should be taken to ensure that no flammable items are above the emission screen.
5. Wear safety glasses and gloves at all times during operation.
6. Never touch the combustion chamber (steel drum) or lid while incinerating refuse.
7. Never allow clothing to come into contact with drum or lid during burning.
8. Do not incinerate aerosol or pressurized cans in the Drug Terminator.
9. Do not operate this product in the vicinity of flammable gases.
10. Refer servicing to qualified personnel under the following conditions:
 - The power supply cord is frayed or damaged.
 - Liquid has been in contact with the electrical system.
 - The product has been damaged and exhibits a distinct change in performance.
11. If unsure about the safety of incinerating a particular item, consult the manufacturer for details and instructions. Please refer to Page 1 for contact information.

Tools Required: Hammer, Phillips Screwdriver, Adjustable Wrench (or 7/16" and 3/8" Sockets)

Components: Assembly Kit (2 Wheels, 2 Fenders, Chain, Fasteners), Plenum, Drum Lid, Flex Hose, Cord Lock, 2 Side Rails, Cart Base, Hand Rail, Bottom Shield, Axle and Stir Rod (in 2 parts)





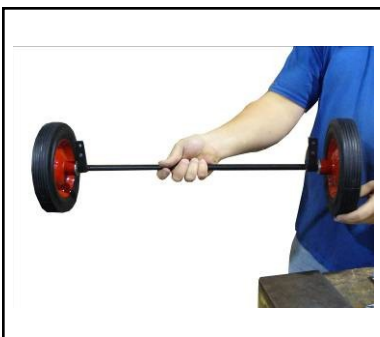
1. Place cart base on work surface.



2. Mount wheel and push nut onto wheel. Wheel has step shoulder on one side. Ensure shoulder is facing in toward axle.



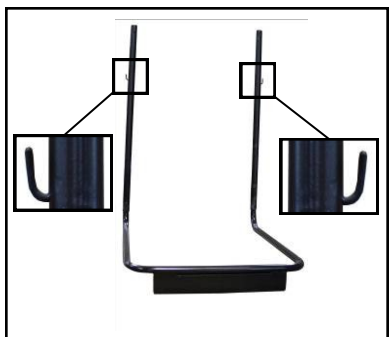
3. Use hammer to drive on push nut.



4. Repeat Steps 2 and 3 for second wheel to complete axle assembly.



5. Place axle assembly near open side of cart base. Ensure axle tabs are on the inside.



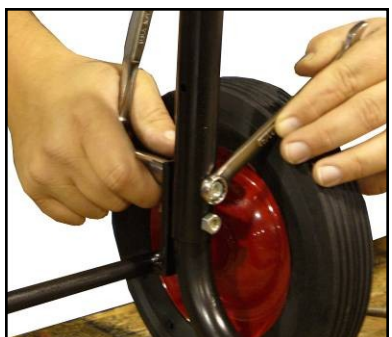
6. Ensure chain hooks are on the outside.



7. Ensure mounting holes are lined up in lower portion of side rail.



8. Line up axle tab mounting holes with side rail mounting holes.



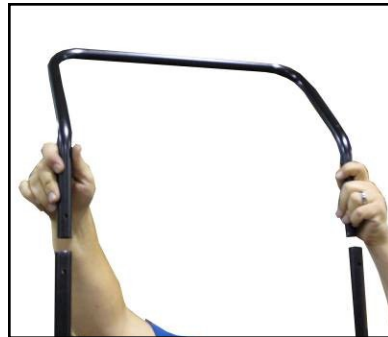
9. Using two 1/4" bolts on each side, mount axle tabs to side rails.



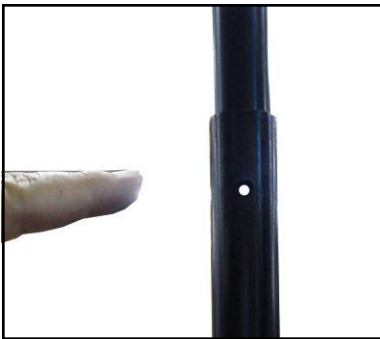
10. Install fender to side rail with 1-1/2 long screw using the top hole only. Fender flare is to the outside.



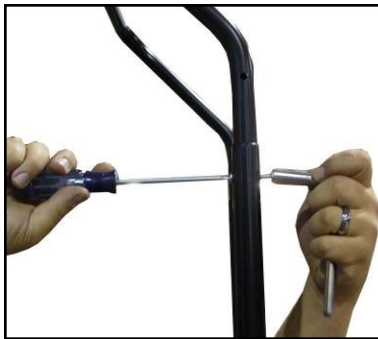
11. Repeat Step 7 for second fender.



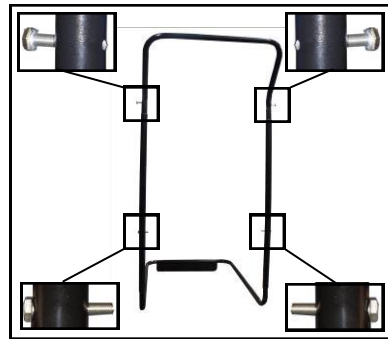
12. Insert cart handle into side rails.



13. Ensure mounting holes are lined up in upper portion of side rail.



14. Use 1/4" screws and nuts to attach handle to side rails and tighten.



15. Install 1/4" bolts into side rails as shown. Lower bolts should be screwed in all the way, upper bolts through side rails only.



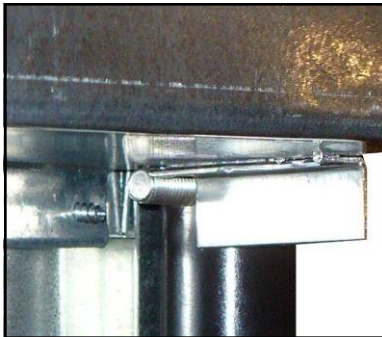
16. Slide bottom shield onto plenum as shown.



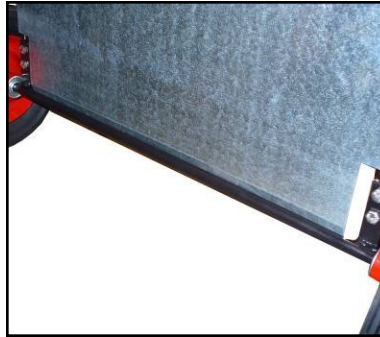
17. Ensure mounting holes are lined up, and attach plenum to bottom shield using two screws.



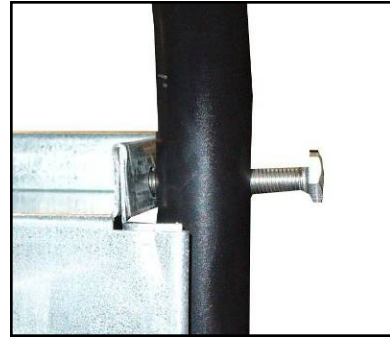
18. Place plenum between side rails. This is a tight fit.



19. Plenum should rest on screws in lower side rails as shown.



20. Ensure bottom shield is in front of axle.



21. Install 1/4" bolt into upper-most portion in each side rail. Ensure bolt goes through plenum mounting hole.



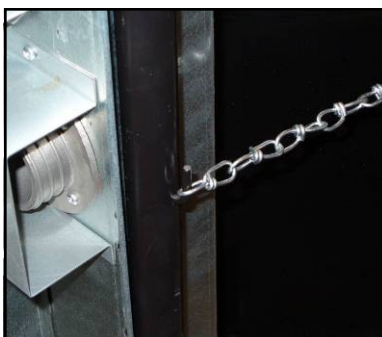
22. Tighten bolt.



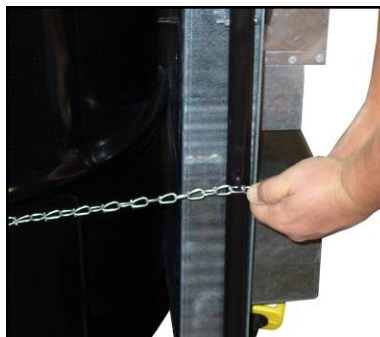
23. Repeat Steps 22 and 23 on other side.



24. Set open head drum onto cart.



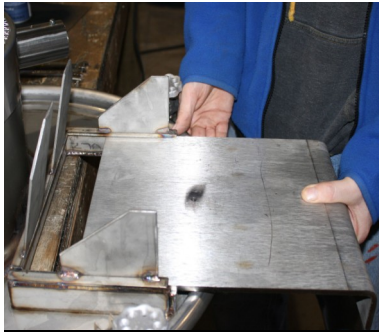
25. Attach chain to hook as shown.



26. Wrap chain around barrel. Pull tight to remove any slack, and attach to second hook.



27. Set drum lid on drum.



28. Position trap door above drum lid.



29. Slide trap door through drum lid.



30. Insert 1/4" bolt through top of trap door. Using 7/16" wrenches, tighten lock nut, with 1-2 threads showing.



31. Rotate clamps into position and tighten by turning knob.



32. Slide flex hose over snap button on 2 inch outlet on plenum.



33. Slide flex hose over snap button on 2-inch inlet on drum lid.



34. Install plug in cord lock.



35. Assemble stir rod by inserting upset end over straight end and push together.



36. See above for assembled unit.

The first step in getting your Drug Terminator ready is to determine the electrical power required for your particular unit (110 volt or 220 volt). You will then need to choose the correct electrical outlet for the unit.

NOTE: Choose an outlet with a 20-amp breaker or greater.

Due to the high amperage draw of the Drug Terminator, it should be the only appliance on the circuit when possible. The unit draws nearly 30 amps at start-up and 14 amps during operation.

Saf-Start mechanisms are installed on Drug Terminator units to guard against improper restart of the unit after a power interruption has stopped the airflow.

Saf-Start is a very sensitive electrical control device. It will disengage when there is a power interruption or power supply fluctuation that is below recommended levels. It will even detect a split-second fluctuation that is below the recommended levels.

In some instances, the power supply switch is turned on and the Saf-Start disengages due to an overloaded circuit. The operator may need to reduce the number of appliances on the circuit, use an outlet on a different circuit or reduce the length of the extension cord used.

NOTE: The Saf-Start must be reset each time the unit is plugged in.

SELECTING A DRUM

- Use a standard open-head 55-gallon drum in good condition.
- The lip must not be damaged.
- The drum lid will not fit a “de-headed” oil or chemical drum.
- Do not pierce holes in the drum.
- If the lid does not fit, the drum may be out of round. Check the drum and correct as follows:
 1. Measure across top of drum in several directions. If there is a difference of more than 1/4 inch (6 millimeters) in measurements, the drum is out of round and needs adjustment.
 2. To correct, place drum on its side with the “long” measurement vertical. Lean on the drum rim and use body weight to depress the rim.
 3. Re-measure the drum and repeat the process until correction is made.

NOTE: If the drum is painted, it may smoke when used for the first time.

REQUIRED ACCESSORIES

Three-wire, Outdoor Electrical Extension Cord
Under 25 feet (15 meters) = No lighter than 18 ga
Over 50 feet (30 meters) = No Lighter than 16 ga
Safety Glasses
Gloves (appropriate for hot surfaces)
Several Sections of Newspaper or Cardboard
Matches or Lighter

PREPARING TO BURN

1. Select a site at least 10 feet / 3 meters from buildings, hedges and trees. Place Drug Terminator on bare ground, gravel or concrete. Do not burn on asphalt surfaces, lawn or ground with dry vegetation, as drum bottom becomes very hot.
2. Position Drug Terminator so cart, air supply and operator are upwind and drum is downwind.
3. Connect Drug Terminator plug to extension cord and cord to grounded electrical outlet. Depress the RESET button on Saf-Start plug.

WARNING: To prevent accidental interruption of burning, install cord lock and arrange slack in cord beneath plug-in.

NOTE: If there is a power interruption during the operation of your Drug Terminator unit, follow the steps below for restart:

1. Turn toggle switch to OFF position.
2. Move air control latch to START position.
3. Allow unit to cool down for 10 minutes.
4. Reset Saf-Start.
5. Remove lid and repeat ignition procedure as normal.

WARNING: Failure to observe these cautions may result in rapid internal combustion when air returns. This could cause damage to the drum lid or lip and could cause possible personal injury.

CAUTION: Operator must wear safety glasses and gloves at all times during operation.

1. Place approximately ten pounds of wood or charcoal into the Drug Terminator drum (Figure 1). Wood is the preferred fuel. One pound of wood equals approximately five minutes of burn time.

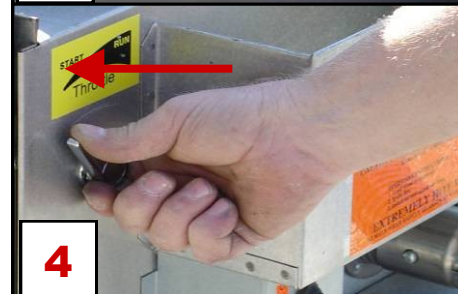
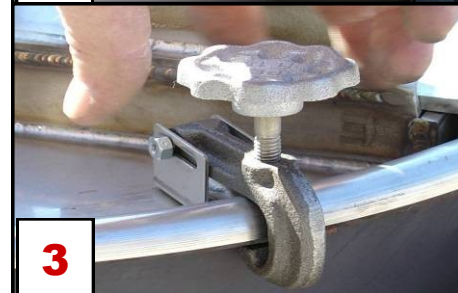


2. Add several wads of newspaper (Figure 2).



3. Place Terminator lid on drum and tighten clamps (Figure 3) as follows:

- Lower all clamps to rim of lid.
- Push all clamps inward toward drum. If clamp encounters resistance, it is because screw attached to hand wheel is sticking out below clamp and obstructing clamp movement. Correct by spinning hand wheel counterclockwise to retract screw.
- When clamps are in position against drum, tighten all clamps evenly so that lid fits properly. This will ensure a good seal.
- Clamps are in the correct position when the back end of the clamp is flush with back end of clamp mounting bracket.
- When applying clamps, walk to the back of the unit from clamp to clamp to avoid the exhaust stream.



4. Turn air throttle to lowest position (Figure 4).

5. Light the newspaper (Figure 5). Do not use accelerants such as gasoline, lighter fluid, paint thinners, etc.



6. Once a good fire has been established, slowly increase the air supply by advancing the throttle as shown in Figure 6.



NOTE: Unit may briefly smoke until it reaches operating temperature.

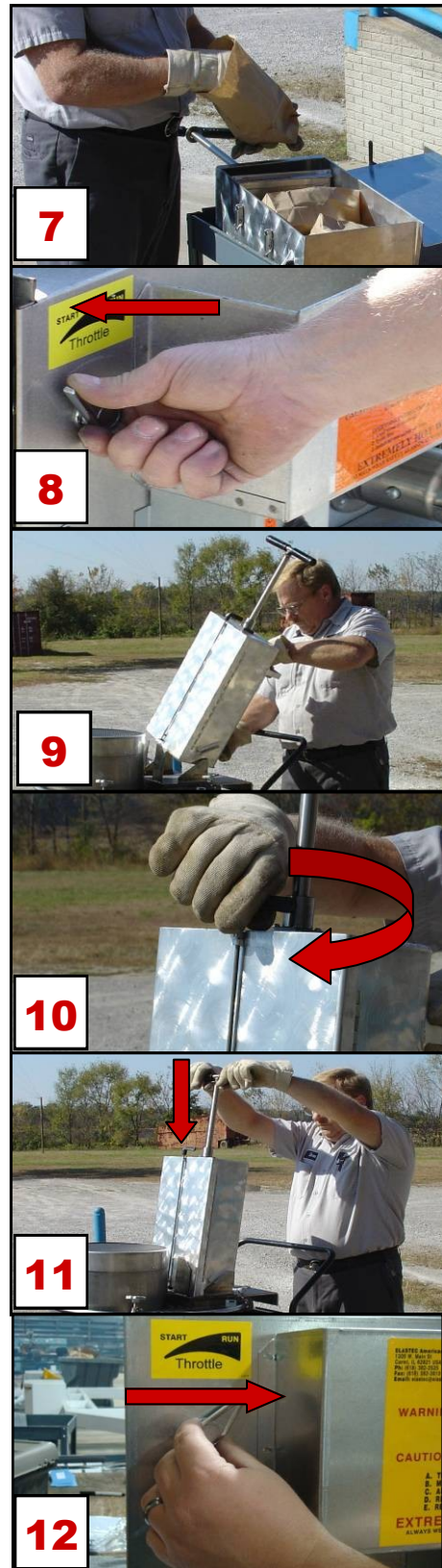
NOTE: Drugs are injected into a super-heated fire within the Drug Terminator when the pre-burn fire is in full force.

1. Open the door on the E-Z Feed Cartridge and raise plunger.
2. Load the E-Z Feed Cartridge with evidence bags and drugs that have been put into paper bags or rolled newspaper (Figure 7). Close the E-Z Feed Cartridge door and lock by turning the lever.

WARNING: Plastic will immediately melt when in contact with warm or hot surfaces. Do not pack tightly.

5. Reduce air flow by turning control latch toward START (Figure 8).
6. Place E-Z Feed Cartridge onto the lid (Figure 9).
7. Unlock the E-Z Feed Cartridge by turning the lever as shown in Figure 10.
8. Inject the material into the Drug Terminator (Figure 11), lift the handle and step away.
9. Take position behind the cart. Turn air control latch slowly from START to RUN until visible and audible signs indicate the fire is burning vigorously (Figure 12).

CAUTION: Operator must wear safety glasses and gloves at all times during operation.



TERMINATING BURN

1. Progress of the burn near termination can be judged by observation through the porthole or by insertion of the manufacturer-supplied stir rod into the porthole.

CAUTION: Stir rod is specially designed to prevent flame from traveling through rod during stirring. Do not use anything other than this rod to stir contents of burner during operation.

2. If drum interior is completely dark, or if the stir rod reaches the bottom of the drum without obstruction, the burn is usually complete.
3. Termination of burn is frequently indicated by a dusting or smoking episode.
4. If observation through the porthole reveals that fire is still present but only in part of the drum, the termination of the burn can be expedited by breaking up remaining clots of flame with stir rod.
5. When the burn is complete, the unit should be allowed to cool for several minutes. Avoid touching the clamps or porthole until unit has cooled. Be sure to wear gloves when removing the lid.

WARNING: Unit must be disconnected from power source before performing any maintenance.

REMOVING MOTORS

1. Place air supply on flat surface with the motor side facing up. Remove motor cover.
2. Unscrew nuts holding switch in place and drop switch back through mounting hole into air supply interior.
3. Remove screws holding motor mounting plate in place on air supply. Remove motor assembly, which consists of the motor plate, two motors, switch and wiring.
4. Remove long screw from motor plate that supports motor cover. To do so, hold nut on screw with needle nose pliers or 3/8-inch open wrench. Loosen screw with screwdriver and turn nut off screw with fingers. Remove screw from motor plate and attach nut to screw.

AIR FILTERS

Check conditions of air filters located on motors frequently.

1. Remove motor cover on back of air supply by removing wing nut .
2. Pry retaining harness off pegs and lift out filter.
3. Clean air filter by using the unit's air hose. Hold clean side of filter to the air hose and blow dirt away. Replace if blocked or damaged.

EXTERNAL SPARK SCREEN

1. Tap center of screen to remove encrusted ash.
2. To replace spark screen, remove three screws holding screen housing to top of lid and remove inner parts.

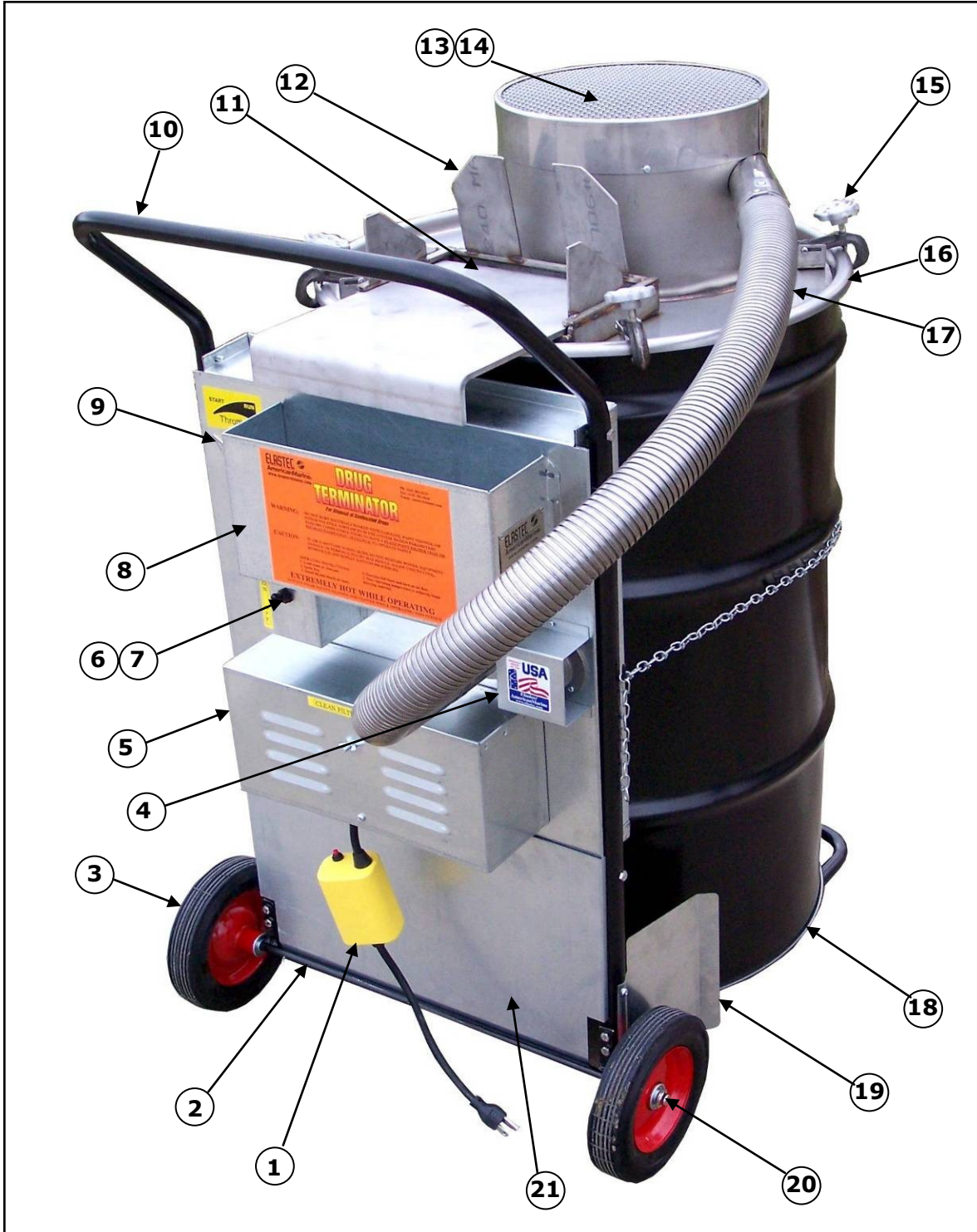
INTERNAL SPARK DEFLECTOR

Deflector is held in position by tabs on two of its legs that trap the inner edge and the drum lid and a cotter pin that attaches the third leg to the drum lid.

To remove deflector, pry points of cotter pin up straight, hold them together with pliers and tap pin down through the deflector leg. Pull pin free with pliers.

When not in use, the Drug Terminator should be covered and stored indoors. Insert stir rod through porthole in drum. Store chain in accessories tray.

Load drum at burning site rather than wheel a loaded drum to the site.



| 110v Parts List | | |
|------------------------|---------------|--|
| Item# | Part # | Description |
| 1 | 0KIT-SA110 | Saf-Start Kit 110V |
| 2 | 4AXLECA080 | Axle |
| 3 | 4WHEECA010 | Cart Wheel |
| 4 | 4COVEAI010 | Air Port Cover |
| 5 | 4COVEBL010 | Blower Cover |
| 6 | 4SWITTO010 | Toggle Switch 110V / 220V |
| 7 | 4BOOTTO001 | Toggle Switch Boot |
| 8 | 4PLEN--110C | Plenum Box Assembly 110V |
| 9 | 4LATCAI010C | Air Shutter Control |
| 10 | 4CARTSM010C | Cart SmartAsh Assembly |
| 11 | 4DOORTE010W | Door Terminator |
| 12 | 4BANDTO001C | Top Band S/S |
| 13 | 4SPACSC010 | Screen Spacer |
| 14 | 4SCRESP010 | Spark Screen |
| 15 | 0KIT-LI510 | Lid Clamp Assembly |
| 16 | 4LID-DR010 | Drum Lid Assembly |
| 17 | 4HOSEFL708 | Flex Hose S/S 45" |
| 18 | 4DRUMOP012 | Open Head Drum (Optional) |
| 19 | 4FENDCA010 | Fender |
| 20 | 4AXLENU010 | Axle Push Nut |
| 21 | 4SHIEBO010 | Bottom Guard |
| 22* | 4COVEST010 | Stir Port Cover |
| 23* | 4ROD-ST000 | Stir Rod |
| 24* | 4AIRP-036C | Air Port 2-1/4" |
| 25* | 4LOCCO010 | Cord Lock |
| 26* | 4CARTEA010C | Cartridge Easy Feed Terminator (See Page 14) |

*Not Shown

| Parts List | | |
|-------------------|---------------|--------------------------------|
| Item# | Part # | Description |
| 1 | 0KIT-SA220 | Saf-Start Kit 220V |
| 2 | 4AXLECA080 | Axle |
| 3 | 4WHEECA010 | Cart Wheel |
| 4 | 4COVEAI010 | Air Port Cover |
| 5 | 4COVEBL010 | Blower Cover |
| 6 | 4SWITTO010 | Toggle Switch 110V / 220V |
| 7 | 4BOOTTO001 | Toggle Switch Boot |
| 8 | 4PLEN--220C | Plenum Box Assembly 220V |
| 9 | 4LATCAI010C | Air Shutter Control |
| 10 | 4CARTSM010C | Cart SmartAsh Assembly |
| 11 | 4DOORTE010W | Door Terminator |
| 12 | 4BANDTO001C | Top Band S/S |
| 13 | 4SPACSC010 | Screen Spacer |
| 14 | 4SCRESP010 | Spark Screen |
| 15 | 0KIT-LI510 | Lid Clamp Assembly |
| 16 | 4LID-DR010 | Drum Lid Assembly |
| 17 | 4HOSEFL708 | Flex Hose S/S 45" |
| 18 | 4DRUMOP012 | Open Head Drum (Optional) |
| 19 | 4FENDCA010 | Fender |
| 20 | 4AXLENU010 | Axle Push Nut |
| 21 | 4SHIEBO010 | Bottom Guard |
| 22* | 4COVEST010 | Stir Port Cover |
| 23* | 4ROD-ST000 | Stir Rod |
| 24* | 4AIRP-036C | Air Port 2-1/4" |
| 25* | 4LOCCO010 | Cord Lock |
| 26* | 4CARTEA010C | Cartridge Easy Feed Terminator |

*Not Shown

| Parts List | |
|-------------|--------------------------------------|
| Part # | Description |
| 0KIT-SP110 | Spare Parts Kit (For 110V) |
| 0KIT-SP220 | Spare Parts Kit (For 220V) |
| 4SCRESP010 | Spark Screen |
| 0KIT-MO010 | Replacement Motor (For 110v Version) |
| 0KIT-MO020 | Replacement Motor (For 220v Version) |
| 0KIT-AI820 | Air Port Kit |
| 4FILTHO010 | Filter Holder |
| 0KIT-FI072 | Filter Kit |
| 4KEEPPFI010 | Filter Keeper |
| 4AIRP-020 | Air Port 1-1/4" |
| 4BRACSW000 | Switch Bracket |
| 4DEFLSP010 | Spark Deflector Assembly |
| 4CAP-SM010 | Cover Cap |
| 0KIT-SN010 | Snap Button Kit |
| 4CHAIDO010 | Double Loop Chain |
| 4GRATSM010 | Grate Complete (Optional) |
| 4CARTEA010C | Cartridge Easy Feed Terminator |

| PROBLEM | PROBABLE CAUSE | SOLUTION |
|--|--|--|
| Excessive smoke | Poor start | Remove lid. If fire is smoldering or burning weakly, restart with newspaper on top of load. |
| | Unsuitable or wet material | Remove or dump material. Restart with proper, dry load. |
| Lid leaks | Clamps loose or not properly seated | Re-seat clamps and tighten. |
| | Bent drum lip | If severe, replace drum. If bent only on the underside, rotate drum so clamps fasten on the unbent section. Drum should be replaced at earliest convenience. |
| | Lid warped from exposure to excessive temperatures | Leaking area can usually be sealed by a Vise Grip welding clamp Model 9R or equivalent available in hardware stores. Drum should be replaced at earliest convenience. |
| Weak air flow | Clogged air filters. | Clean or replace air filters. See Page 19 for instructions. |
| | Air control not working properly | Check air control latch for proper operation. |
| | Motor failure | Remove motor cover, filter harness and filter to expose motor. If power is on and motor does not turn, it will have to be replaced. |
| Saf-Start disengages with power supply switched on | Circuit overload | Reduce the number of items on the circuit or use another outlet on a different circuit. Reduce the length of the extension cord. |
| Lid sticks on drum | Drum is out of round. | Pull upward on one lid handle while tapping side of drum immediately below with hammer. Proceed to next handle and repeat until lid pulls free. To correct drum condition, see "Selecting Drum." |
| Unit does not start. | Saf-Start has not been engaged. | Engage Saf-Start. See Page 11 for instructions. |

Elastec/American Marine warrants these products against defects in material and workmanship under normal use and service for a period of six months.

Elastec/American Marine's obligation under this warranty is limited solely to repairing or replacing parts that in its judgment are defective in material and/or workmanship.

Elastec/American Marine shall not be liable for expenses incurred in repairs or alterations made outside its factories or licensed dealer locations, without its prior authorization, nor shall it be responsible for the performance of this product to which any revisions or alterations have been made by others.

Elastec/American Marine shall not be, in any event, liable for damages or delays, nor for any consequential, special or contingent damages for breach of warranty.