

SET-UP DATA

Length	743 mm
Stroke	120 mm
Spring rate	9.5 N/mm
Oil Level	170 mm

Recommended settings:

Rebound adjustment	12 clicks
Compression adjustment	12 clicks
Spring preload	13 mm

ADJUSTMENTS

1 Spring preload

Turn the nut at the top of the fork leg. Turn clockwise to increase the spring preload, turn counter clockwise to decrease it. Use a 17 mm wrench.

2 Compression damping

Adjust at the bottom of the fork leg. Use a 3 mm allen key.

3 Rebound damping

Adjust at the top of the fork leg. Turn clockwise to increase the spring preload, turn counter clockwise to decrease it.

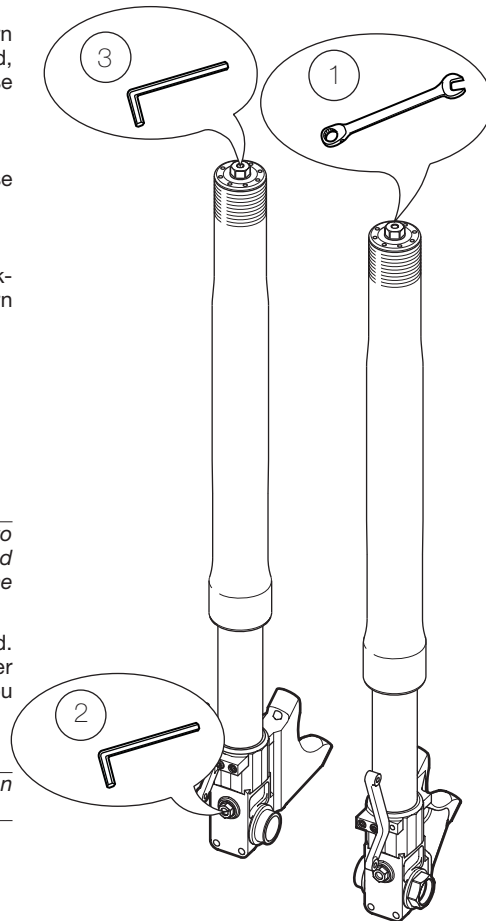
NOTE!

When delivered the Öhlins front fork is dialed to recommended settings for the specific brand and make of the vehicle. If you have changed the setting, reset according to the following:

The adjusters have a normal right hand thread. Turn clockwise to fully closed. Turn counter clockwise to open and count the clicks until you reach the recommended number.

CAUTION!

Do not use force, delicate sealing surfaces can be damaged. Handtighten only.



Mounting Instructions FG352_1 Issued 2006 08 08

Mounting Instructions

Öhlins Front Fork kit FG352

Before installing this product, check the contents of the kit listed below. If anything is missing, please contact your Öhlins dealer.

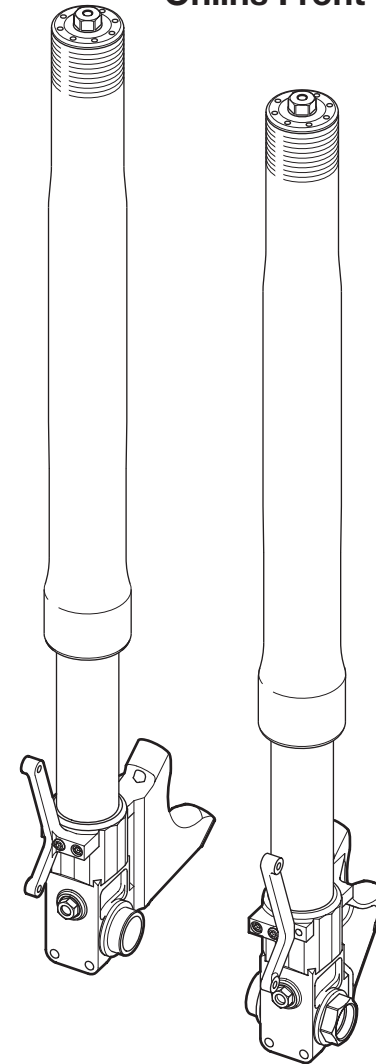
Kit Contents

	Art. No.	Pcs.
Front fork	04790-10	1 pair
Shaft sleeve	01687-03	2
Caliper bracket RH	01677-42	1
Caliper bracket LH	01677-43	1
Screw MC6S	01046-34	4
Fender bracket LH	01682-29	1
Fender bracket RH	01682-30	1
Nut M24x1	01680-25	1
Spacer	01680-26	2
Öhlins Sticker	00194-10	2
Öhlins Owner's Manual	07282-04	1

Before installing

Öhlins Racing AB cannot be held responsible for any damage to front fork or the vehicle, or injury to persons, if the instructions for installing and maintenance are not followed exactly. Similarly, the warranty will become null and void if the instructions are not adhered to.

Öhlins products are subject to continuous improvement and development. Therefore, although these instructions include the most up-to-date information available at the time of printing, there may be minor differences between your product and this manual. Please consult your Öhlins dealer if you have any questions regarding the contents of the manual.



SAFETY PRECAUTIONS

Read this manual carefully!

Pay special attention to statements preceded by the following notations:



The Safety alert symbol means: Attention! Your safety is involved!

WARNING

Failure to follow these warning instructions may result in **severe or fatal injury** to anyone working with, inspecting or using this front fork, or to bystanders.

CAUTION!

Caution indicates that special precautions must be taken to avoid damage to the front fork.

NOTE!

Indicates information that is of importance regarding mounting procedures.

WARNING!

1. **Installing a front fork, that is not approved by the vehicle manufacturer, may affect the vehicle's stability.** Öhlins Racing AB cannot be held responsible for any personal injury or damage that may occur after fitting the front fork.

2. **The vehicle service manual must be referred to** when installing this front fork.

3. Please study and make certain you fully understand the mounting instructions and the Owner's manual before handling this front fork. If you have any questions regarding proper installation procedures, contact an Öhlins dealer.

During storage and transport, especially at high ambient temperature, the oil and grease used for assembling may run out inside the packing and damage the expanded polystyrene packing material. This is not unusual and is in no way detrimental to the front fork.

MOUNTING INSTRUCTIONS

WARNING!

1. It is advisable to have an Öhlins dealer install the front fork.
2. Follow the instructions in the vehicle service manual when changing the front fork.
3. When working on a raised vehicle, make sure that it is securely supported to prevent it from tipping over.

1

Put the motorcycle on a workstand so that the front wheel is off the ground.

2

Detach, **but do not remove**, the brake caliper on each side of the vehicle, let them hang by the brake hoses.

3

Remove the front wheel by loosening and removing the shaft.

4

Remove the front cover.

5

Remove the attachments of the lower and the upper triple clamps.

6

Remove the original front fork legs by pulling them downwards.

CAUTION!

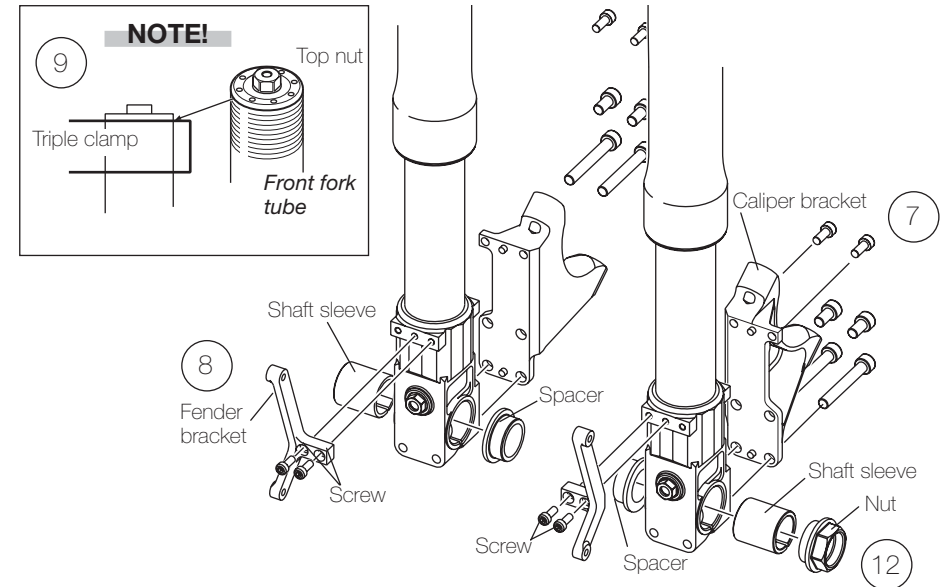
When performing steps 7-10, do not tighten the bolts.

7

Install the Caliper brackets to the fork legs, use the bolts already installed into the fork bottom.

8

Install the Fender brackets to the fork bottom.



9

Install the Öhlins front fork legs to the triple clamps. Do not tighten until the legs are in correct position. See Note below!

NOTE!

The fork legs should be installed so that the top of the front fork tube is aligned with the top of the triple clamp.

10

Tighten the upper triple clamp first. Then, tighten the lower one to the correct torque. Consult your Vehicle Service Manual.

CAUTION!

Do not overtighten. The lags can be deformed and thereby cause malfunction.

11

Reinstall the wheel and the front wheel shaft. Do not tighten yet!

12

Install the shaft sleeves, spacers and nut to the fork bottom of the Öhlins front forks. **See figure!**

13

Install the brake calipers on both sides. Consult your vehicle service manual.

14

Install the front fender.

15

Put the motorcycle back on the ground. Apply the front wheel brake and at the same time, push the front suspension down, two to three times. This will put the fork legs in a parallel position.

NOTE!

Another way to put the fork legs in a parallel position is to rotate the wheel as fast as possible and then bringing it to a fast stop by braking.

16

Tighten the wheel shaft and shaft clamps so that the fork legs are in a fixed position. Tighten the fender and caliper brackets. Consult your Vehicle Service Manual for torques.

NOTE!

Make sure that all bolts are tightened to the correct torque and that nothing restrains the front fork when the suspension is compressed or extended. Consult the Vehicle Service Manual.

17

Read more about the front fork in your Öhlins Owner's Manual.