



PARTS / SERVICE MANUAL

MODELS: CS1, CS2, CSP3



SAW DEVIL®

Concrete Saw Models

A 100% employee-owned American manufacturer



Table of Contents

Concrete Saws

TABLE OF CONTENTS	3-4
USER INFORMATION	5-6
Foreword/Warranty Info	5
LIMITED WARRANTY	6
HEALTH & SAFETY	7-10
Safety Training	7
Safety Precautions	8-10
TECHNICAL DATA	11-16
Specifications	11
Machine Sound and Vibration Measurements	12
Service Check List	13
Hardware Identification	14
Torque Chart - Imperial	15
Torque Chart - Metric	16
MAINTENANCE	17-22
Important	17
Electrical Power Supply Connection	18
CS2 Electrical System	19
CSP3 Electrical System	20-21
Troubleshooting	22-23
LUBRICATION	24-25
Lubrication and Service	24
Service Record Chart	25
EXPLODED DIAGRAMS & PARTS LIST	26-63
CS1 Assembly	27-33
CS2 Assembly	34-43
CSP3 Console Assembly	44-49
CSP3 Base Assembly	50-55

Table of Contents

Concrete Saws

EXPLODED DIAGRAMS & PARTS LIST cont'd	26-63
Blade Guard Assembly	56-57
Water Pump Assembly	58-59
Water Tank Option Assembly	60-61
Decal Identification	62-63
CALIFORNIA PROPOSITION 65	IBC

User Information

Foreword/Warranty Info

These instructions include:

Safety regulations
Operating instructions
Maintenance instructions

These instructions have been prepared for operation on the construction site and for the maintenance engineer.

These instructions are intended to simplify operation of the machine and to avoid malfunctions through improper operation.

Observing the maintenance instructions will increase the reliability and service life of the machine when used on the construction site and reduce repair costs and downtimes.

Always keep these instructions at the place of use of the machine.

Only operate the machine as instructed and follow these instructions.

Observe the safety regulations as well as the guidelines of the civil engineering trade association. Observe safety rules for the operation of equipment and the pertinent regulations for the prevention of accidents.

Stone Construction Equipment, Inc. is not liable for the function of the machine when used in an improper manner and for other than the intended purpose.

Operating errors, improper maintenance and the use of incorrect operating materials are not covered by the warranty.

The above information does not extend the warranty and liability conditions of business of Stone Construction Equipment, Inc.

1. Machine Type: _____

Machine S/N: _____

2. Engine Type: _____

Engine S/N: _____

3. VIN: _____

4. Purchase Date: _____

5. Dealer/Distributor Information:

Name: _____

Address: _____

Phone #: _____

Fax #: _____

6. Battery
Manufacturer: _____

Battery Type: _____

Battery S/N: _____

Location of above information:

1. Information on S/N tag.
2. Information on engine tag.
3. Information on S/N tag - if applicable.
4. Date you purchased machine.
5. Dealer machine was purchased from.
6. Information on battery and battery warranty card.

Stone Construction Equipment, Inc.
P.O. Box 150, Honeoye, New York 14471
Phone: (800) 888-9926
Fax: (585) 229-2363

Limited Warranty

The Manufacturer warrants that products manufactured shall be free from defects in material and workmanship that develop under normal use for a period of 90 days for concrete vibrators and electric pumps, one year for Rhino®, Bulldog®, WolfPac Rollers™, trowels, Stompers®, saws, forward plates, engine powered pumps, Lift Jockey™, Mortar Buggy™ and 6 months for all other products from the date of shipment. The foregoing shall be the exclusive remedy of the buyer and the exclusive liability of the Manufacturer. Our warranty excludes normal replaceable wear items, i.e. gaskets, wear plates, seals, O-rings, V-belts, drive chains, clutches, etc. Any equipment, part or product which is furnished by the Manufacturer but manufactured by another, bears only the warranty given by such other manufacturer. (The Manufacturer extends the warranty period to "Lifetime" for the drum bearings and seals for the mortar mixers, and agrees to furnish, free of charge, the bearings and seals only upon receipt of the defective parts. The warranty is two years for eccentric bearings on the forward plate compactors, mortar and plaster mixer drums, trowel gearboxes and five years on the Bulldog trench roller eccentric bearings.) A Warranty Evaluation Form must accompany all defective parts. Warranty is voided by product abuse, alterations, and use of equipment in applications for which it was not intended, use of non-manufacturer parts, or failure to follow documented service instructions. The foregoing warranty is exclusive of all other warranties whether written or oral, expressed or implied. No warranty of merchantability or fitness for a particular purpose shall apply. The agents, dealer and employees of Manufacturer are not authorized to make modification to this warranty, or additional warranties binding on Manufacturer. Therefore, additional statements, whether oral or written, do not constitute warranty and should not be relied upon.

The Manufacturer's sole responsibility for any breach of the foregoing provision of this contract, with respect to any product or part not conforming to the Warranty or the description herein contained, is at its option (a) to repair, replace or refund such product or parts upon the prepaid return thereof to location designated specifically by the Manufacturer. Product returns not shipped prepaid or on an economical transportation basis will be refused (b) as an alternative to the foregoing modes of settlement - the Manufacturer's dealer to repair defective units with reimbursement for expenses, except labor, and be reviewed with the Manufacturer prior to repair. A Warranty Evaluation Form must accompany all warranty claims.

Except as set forth hereinabove and without limitation of the above, there are no warranties or other affirmations which extends beyond the description of the products and the fact hereof, or as to operational efficiency, product reliability or maintainability or compatibility with products furnished by others. In no event whether as a result of breach of contract or warranty or alleged negligence, shall the Manufacturer be liable for special or consequential damages including but not limited to: Loss of profits or revenues, loss of use of the product or any associated product, cost of capital, cost of substitute products, facilities or services or claims of customers.

No claim will be allowed for products lost or damaged in transit. Such claims should be filed with the carrier within fifteen days.

Effective July 2002.

Stone Construction Equipment, Inc. • 8662 Main Street, P. O. Box 150 • Honeoye, NY 14471-0150
Phone: 1-800-888-9926 • 1-585-229-5141 Fax: 1-585-229-2363
www.stone-equip.com • e-mail: sceny@stone-equip.com

SAFETY

These machines are designed to carry out the function of flat sawing material of the non-cohesive, bituminous and granular varieties.

If used correctly they will provide an effective and safe means of flat sawing and meet the appropriate performance standards.

It is essential that the operator/driver of the machine is adequately trained in its safe operation, be authorized to operate it, and have sufficient knowledge of the machine to ensure that it is in full working order, before being put to use.

Health and Safety

Safety Precautions

Before using this equipment, study this entire manual to become familiar with its operation. Do not allow untrained or unauthorized personnel, especially children, to operate this equipment. Use only factory authorized parts for service.

When warning decals are destroyed or missing, contact the Manufacturer immediately at 1-800-888-9926 for replacement. For the safety of yourself and others, it is imperative that the following rules are observed. Failure to do so may result in serious injury or death.



This notation appears before warnings in the text. It means that the step which follows must be carried out to avoid the possibility of personal injury or death. These warnings are intended to help the technician avoid any potential hazards encountered in the normal service procedures. We strongly recommend that the reader takes advantage of the information provided to prevent personal injury or injury to others.



USE COMMON SENSE WHEN HANDLING FUELS

Transport and handle fuel only when contained in approved safety container.

Do not smoke when refueling or during any other fuel handling operation.

Do not refuel while the engine is running or while it is still hot.

If fuel is spilled during refueling, wipe it off from the engine immediately and discard the rag in a safe place.

Do not operate the equipment if fuel or oil leaks exist - repair immediately.

Never operate this equipment in an explosive atmosphere.



Ear protection required when operating this equipment.

Health and Safety

Safety Precautions



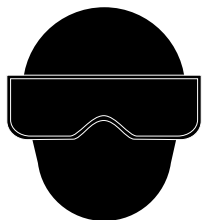
Avoid contact with hot exhaust systems and engines.

Allow engine to cool before performing any repairs.



Never operate unit in a poorly ventilated or enclosed area.

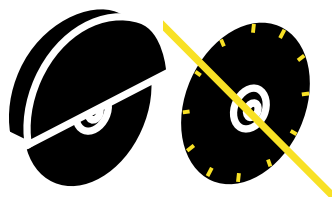
Avoid prolonged breathing of exhaust gases.



Eye protection required when operating this equipment.



Head protection required when operating this equipment.



Never operate this equipment without all guards in place.

Health and Safety

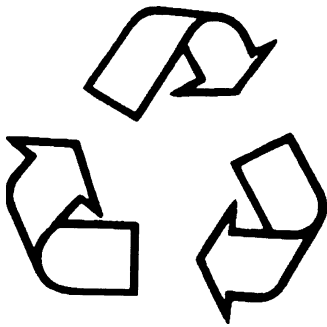
Safety Precautions

PRACTICE SAFE MAINTENANCE



- Understand service procedure before doing work. Keep area clean and dry.
- Never lubricate, service or adjust machine while it is moving. Keep hands, feet, and clothing from power-driven parts. Disengage all power and operate controls to relieve pressure. Lower equipment to the ground. Stop the engine. Remove the key. Allow machine to cool.
- Securely support any machine elements that must be raised for service work.
- Keep all parts in good condition and properly installed. Repair damage immediately. Replace worn or broken parts. Remove any buildup of grease, oil, or debris.
- Disconnect battery ground cable (-) before making adjustments on electrical systems or welding on machine.

DISPOSE OF WASTE PROPERLY



- Improperly disposing of waste can threaten the environment and ecology. Potentially harmful waste used with equipment includes items such as oil, fuel, coolant, brake fluid, filters, and batteries.
- Use leakproof containers when draining fluids. Do not use food or beverage containers that may mislead someone into drinking from them.
- Do not pour waste onto the ground, down a drain, or into any water source.
- Air conditioning refrigerants escaping into the air can damage the Earth's atmosphere. Government regulations may require a certified air conditioning service center to recover and recycle used air conditioning refrigerants.
- Inquire on the proper way to recycle or dispose of waste from your local environmental or recycling center.

SAFETY DECALS - FOR THE SAFETY OF YOURSELF AND OTHERS REPLACE ANY DAMAGED OR MISSING SAFETY DECALS.

Technical Data

Specifications Concrete/ Pavement Saws

Model		CS1	CS2	CSP3
Dimensions				
Weight	lb (kg)	175 lbs (80)	310 lbs (141)	475 lbs (216)
Dimensions	(LxWxH) † in (cm)	36.5" x 26.6" x 34.5" (92,7 x 67,6 x 87,6)	47.3" x 26.6" x 36.75" (120,1 x 67,6 x 93,3)	54" x 26.75" x 37" (137,2 x 68 x 94)
Blade Capacity	in (cm)	12", 14" (30,5 / 35,6)	12", 14", 16", 18" (30,5 / 35,6 / 40,6 / 45,7)	12", 14", 16", 18", 20" (30,5 / 35,6 / 40,6 / 45,7 / 50,8)
Cut Depth	in (cm)	3 5/8" w/ 12" blade (9,2) 4 5/8" w/ 14" blade (11,7)	3 5/8" w/ 12" blade (9,2) 4 5/8" w/ 14" blade (11,7) 5 5/8" w/ 16" blade (14,3) 6 5/8" w/ 18" blade (16,8)	3 5/8" w/ 12" blade (9,2) 4 5/8" w/ 14" blade (11,7) 5 5/8" w/ 16" blade (14,3) 6 5/8" w/ 18" blade (16,8) 7 5/8" w/ 20" blade (19,4)
Operating System				
Engines	hp/(kW)	9 hp Robin (6,7) 8 hp Honda (5,9) 11 hp Honda (8,2) †† recommended for 12" blade only	9 hp Briggs & Stratton Vang. (6,7) 11 hp Honda (8,2) 13 hp Honda (9,7) *16 hp Briggs & Stratton Vang. (11,9) 5 hp Electric (3,7) * electric start	13 hp Honda†† (9,7) *16 hp Briggs & Stratton Vang. (11,9) *18 Honda Twin (13,4) *20 Honda Twin (14,9) * electric start †† not recommended for 18" blade
Air Filter		Dry Element Cyclone Air Cleaner (11 Honda)	Dry Element Cyclone Air Cleaner (11-13 Honda)	Cyclone Air Cleaner (13 Honda) Remote Cyclone (20 & 18 Honda)
Engine	RPM (Hz)	3200 rpm (53)	3200 rpm (53)	3200 rpm (53)
Fuel Capacity	gal (L)	1.6 gal. (6,0)	1.7 gal. (6,4)	2 gals (7,6)
Drive		Push	Push	Hydrostatic
Water System		Corrosion Resistant, Dual Spray	Corrosion Resistant, Dual Spray	Corrosion Resistant, Dual Spray
Performance				
Speed	ft/ min (m/min)	Push	Push	90 ft/min (27,7 m/min)
Axle ‡	(mm)	5/8" (15,9)	3/4" (19,1)	3/4" (19,1)
Wheel‡ (R/F)	(cm)	8" R / 4" F (20,3 R / 10,2 F)	8" R / 4" F (20,3 R / 10,2 F)	8" R / 4" F (20,3 R / 10,2 F)
Blade Shaft Bearings ‡ size	in (mm)	Greasable pillow block sealed 1" (25,4)	Greasable pillow block sealed 1 1/4" (31,8)	Greasable pillow block sealed 1 1/4" (31,8)
Blade Arbor (size & R/L)	in (mm)	1" R/L (25,4)	1" R/L (25,4)	1" R/L (25,4)
Standard Features				
		Front cutting guide 14" blade guard	Lift eye, 4" wheeled front cutting guide, rear cutting guide, adjustable handles, depth gauge, 14" or 16" blade guard	Lift eye, 4" wheeled front cutting guide, rear cutting guide, adjustable handles, depth gauge, Triple V-belt, 14", 16" or 18" blade guard Pressurized Water pump (except on 13 Honda) 3-5 gal/min. (11-19 l/min)
Options		5 or 8 gal. polyethylene water tanks	5 or 8 gal. polyethylene water tanks	-

† Pointer in up position, Handles in mid-position

‡ Use Imperial measured components only (available from manufacturer)

Member Masonry and Concrete Saw Manufacturers Institute and the Concrete Sawing and Drilling Association.

Technical Data

Machine Sound and Vibration Measurements

Sound and Vibration Measurements

Sound Pressure Values as measured are per the following:			
	Model/Configuration		
	CS1 8 HP Honda w/14 in blade	CS2 11 HP Honda w/14 in blade	CSP3 18 HP Honda w/20 in blade
at operator's ear	88dBA	93dBA	91dBA
RMS acceleration on the handle were measured per the following:			
meter/sec ²	13.16	23.4	18.0
Sound and vibration values have been taken in accordance to the EEC machine regulation (edition 93/68/EEC)			
Sound Pressure measurements were taken with Simpson model 886-2 type 2 meter, calibrated 2/21/97			
Acceleration measurements were taken with Quest Tech model VI-100 meter, calibrated 4/17/96			
Sound and vibration measurements were obtained with machine operating at maximum engine speed of 3200 RPM.			
Units had blades mounted and measurements were taken out of cuts.			

document in cs_rev e_2000.p65

Technical Data

Service Check List

ALL SAWS

All saws set RPM at 3200 +/- 50 (no load).

Check blade clamp hub face run-out with indicator and magnetic chuck. Run-out not to exceed .015.

Check belt tension.

Belt deflection = .19 inches at 4.2 lbs. for used belt and 6.2 lbs for new belt.

Grease all pillow blocks.

Apply never-seize to acme screws.

CS2

Make sure kill switch is functional while running.

CS2 / CSP3

Check depth gauge making sure knob turns when lift crank is run up and down.

Check choke and throttle action.

CSP3

Run transmission with shifter making sure neutral correlates with neutral at shifter. (Adjust at clevis and/or at cable bracket on transmission mount).

Set drive axle load springs at 2.38 +/- .06 inches when axle is in run position.

While engine is running, check wet/dry switch for function. (Dry should run—wet should kill engine).

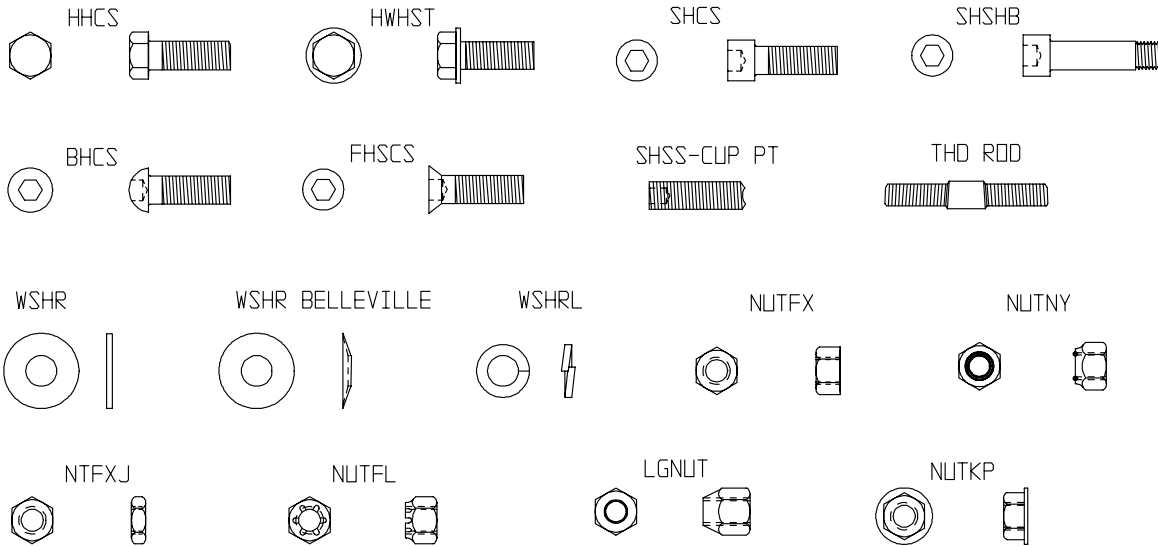
Check water pump switch for function.

Check engage/disengage lever. Drive axle to have .13 minimum clearance to wheel when disengaged.

For longest service life, use any SAE 20W20 in transmission.

Technical Data

Hardware Identification



VR005A

ZN = ZINC PLATED
BLK = BLACK OXIDE FINISH

Technical Data

Torque Chart - Imperial

SAE GRADE 5 Coarse Thread, Zinc-Plated		
SIZE	TORQUE	
	ft. lbs.	Nm
1/4 - 20 (.250)	6	8
5/16 - 18 (.3125)	13	18
3/8 - 16 (.375)	23	31
7/16 - 14 (.4375)	37	50
1/2 - 13 (.500)	57	77
9/16 - 12 (.5625)	82	111
5/8 - 11 (.625)	112	152
3/4 - 10 (.750)	200	271
7/8 - 9 (.875)	322	436.5
1 - 8 (1.000)	483	655

SAE GRADE 8 Coarse Thread, Zinc-Plated		
SIZE	TORQUE	
	ft. lbs.	Nm
1/4 - 20 (.250)	9	12
5/16 - 18 (.3125)	18	24
3/8 - 16 (.375)	33	45
7/16 - 14 (.4375)	52	70
1/2 - 13 (.500)	80	108
9/16 - 12 (.5625)	115	156
5/8 - 11 (.625)	159	215
3/4 - 10 (.750)	282	382
7/8 - 9 (.875)	454	615
1 - 8 (1.000)	682	925

SAE GRADE 5 Fine Thread, Zinc-Plated		
SIZE	TORQUE	
	ft. lbs.	Nm
1/4 - 28 (.250)	7	10
5/16 - 24 (.3125)	14	19
3/8 - 24 (.375)	26	35
7/16 - 20 (.4375)	41	56
1/2 - 20 (.500)	64	87
9/16 - 18 (.5625)	91	123
5/8 - 18 (.625)	128	173
3/4 - 16 (.750)	223	302
7/8 - 14 (.875)	355	481
1 - 12 (1.000)	529	717
1 - 14 (1.000)	541	733

SAE GRADE 8 Fine Thread, Zinc-Plated		
SIZE	TORQUE	
	ft. lbs.	Nm
1/4 - 28 (.250)	10	14
5/16 - 24 (.3125)	20	27
3/8 - 24 (.375)	37	50
7/16 - 20 (.4375)	58	79
1/2 - 20 (.500)	90	122
9/16 - 18 (.5625)	129	175
5/8 - 18 (.625)	180	244
3/4 - 16 (.750)	315	427
7/8 - 9 (.875)	501	679
1 - 12 (1.000)	746	1011
1 - 14 (1.000)	764	1036

t-chrt_i.doc

Technical Data

Torque Chart - Metric

Monthly, inspect all hardware on this equipment and engine/motor. Loose hardware can contribute to early component failure and poor performance. Use the torque chart below as a general guideline and keep all hardware tight.

Note: Some hardware is used to retain parts that have to move freely for correct operation of this unit. The hardware for these items should be snug enough to prevent excessive play, yet loose enough to allow the parts to pivot freely.

Property Class 8.8

ZINC-PLATED

SIZE	Coarse Thread		Fine Thread	
	Nm	ft. lbs.	Nm	ft. lbs.
M6	9.9	7	10	7
M8	24	18	25	18
M10	48	35	49	36
M12	83	61	88	65
M14	132	97	140	103
M16	200	148	210	155
M20	390	288	425	313
M24	675	498	720	531

Property Class 10.9

ZINC-PLATED

SIZE	Coarse Thread		Fine Thread	
	Nm	ft. lbs.	Nm	ft. lbs.
M6	14	10	14	10
M8	34	25	35	26
M10	67	49	68	50
M12	117	86	125	92
M14	185	136	192	142
M16	285	210	295	218
M20	550	406	600	443
M24	950	701	1000	738

Property Class 12.9

ZINC-PLATED

SIZE	Coarse Thread		Fine Thread	
	Nm	ft. lbs.	Nm	ft. lbs.
M6	16.5	12	16.5	12
M8	40	30	42	31
M10	81	60	82	60
M12	140	103	150	111
M14	220	162	235	173
M16	340	251	350	258
M20	660	487	720	531
M24	1140	841	1200	885

Conversion Factor: 1 ft. lb. = 1.3558 Nm



IMPORTANT

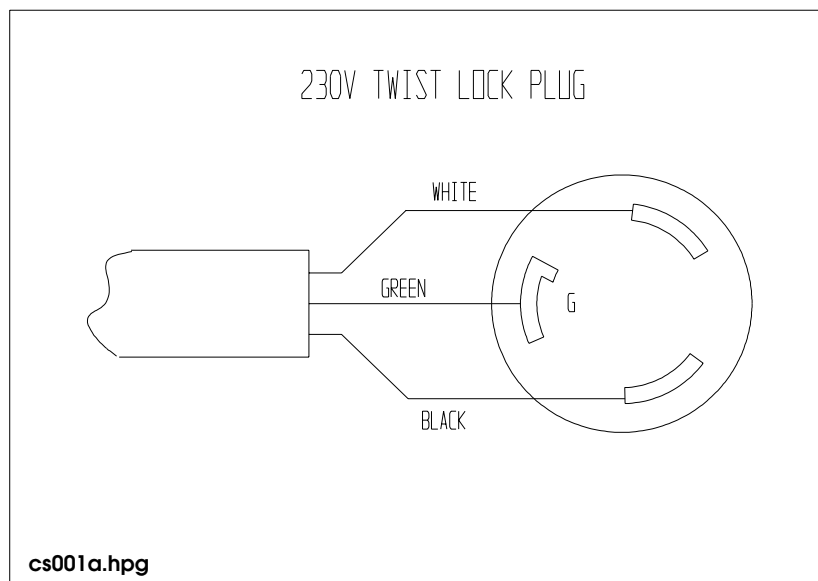
THE PERSON ATTEMPTING ANY OF THE FOLLOWING MAINTENANCE TASKS, MUST BE AUTHORIZED TO DO SO AND HAVE READ AND UNDERSTOOD ALL SECTIONS WITHIN THIS MANUAL

Maintenance

Electrical Power Supply Connection

Connecting wires or extension cords should be as short as possible and one piece. In no case should the connecting wires or extension cords be longer than shown in the following chart.

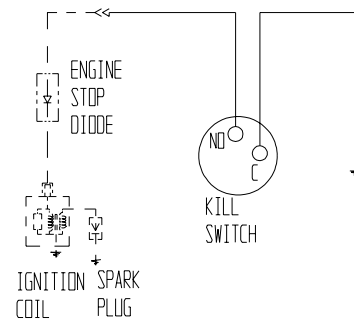
RECOMMENDED MAXIMUM LENGTH OF POWER CORD	
WIRE GAUGE	230V, SINGLE PHASE, 5HP MOTORS
#8	110 Feet
#6	180 Feet
CAUTION: Use of a wire gauge that is too small will cause loss of power and will damage the electric motor.	
IMPORTANT: Be sure saw is properly grounded prior to operation. Refer to National Electric Code for required grounding methods.	



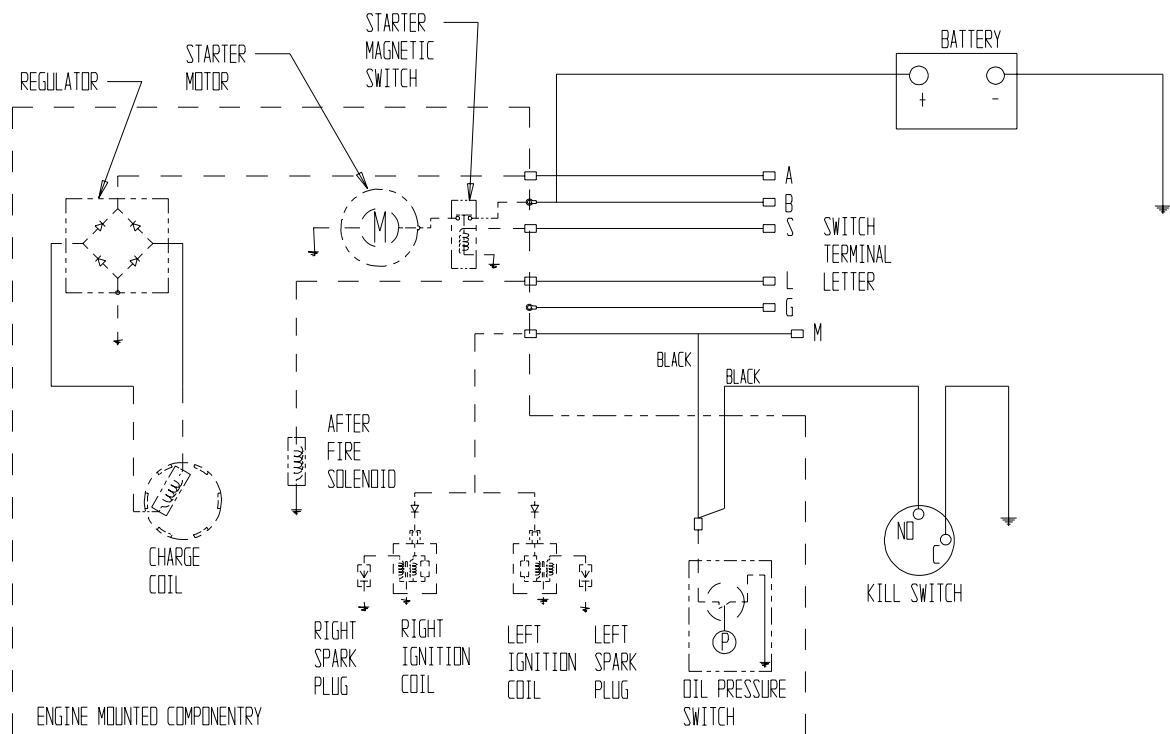
Maintenance

CS2 Electrical System

CS2 KILL SWITCH



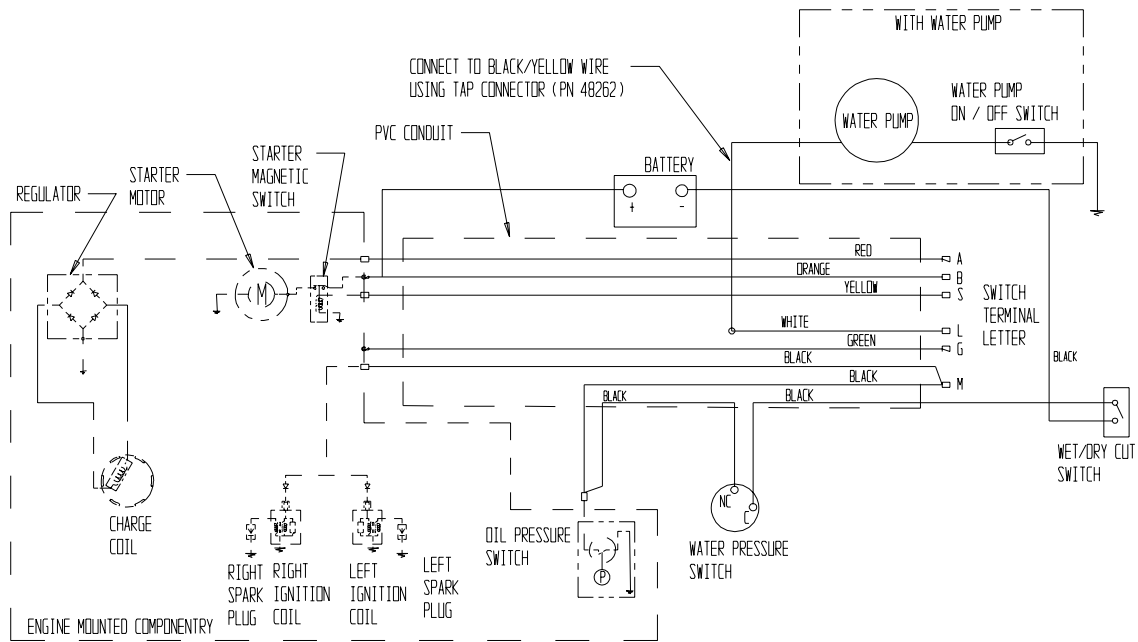
CS2 WITH 16HP BRIGGS & STRATTON



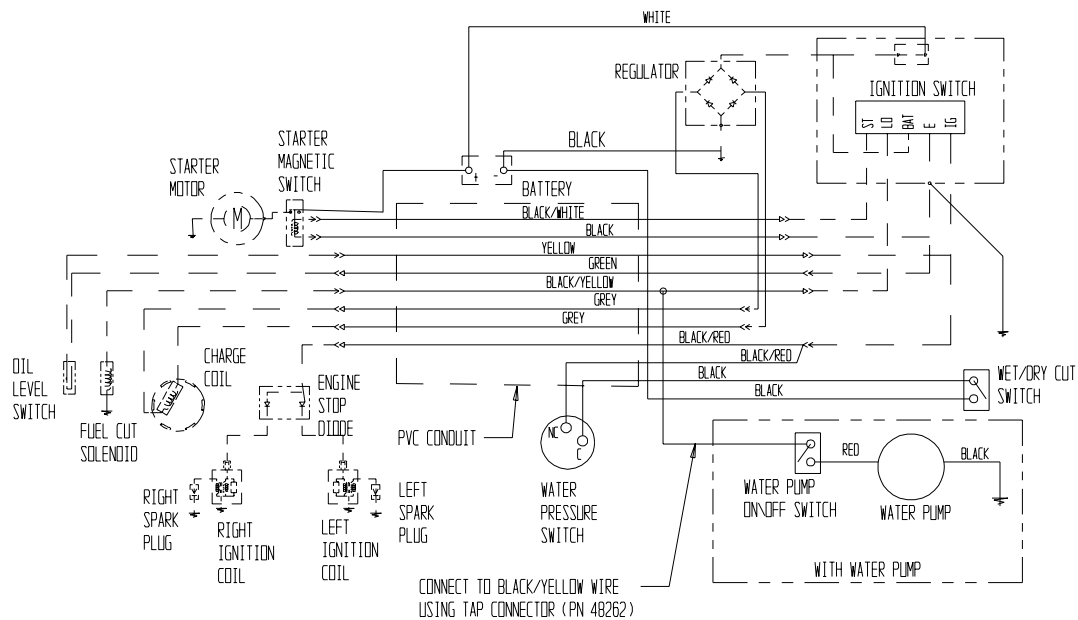
Maintenance

CSP3 Electrical System

CSP3 WIRING DIAGRAM WITH 16HP BRIGGS & STRATTON

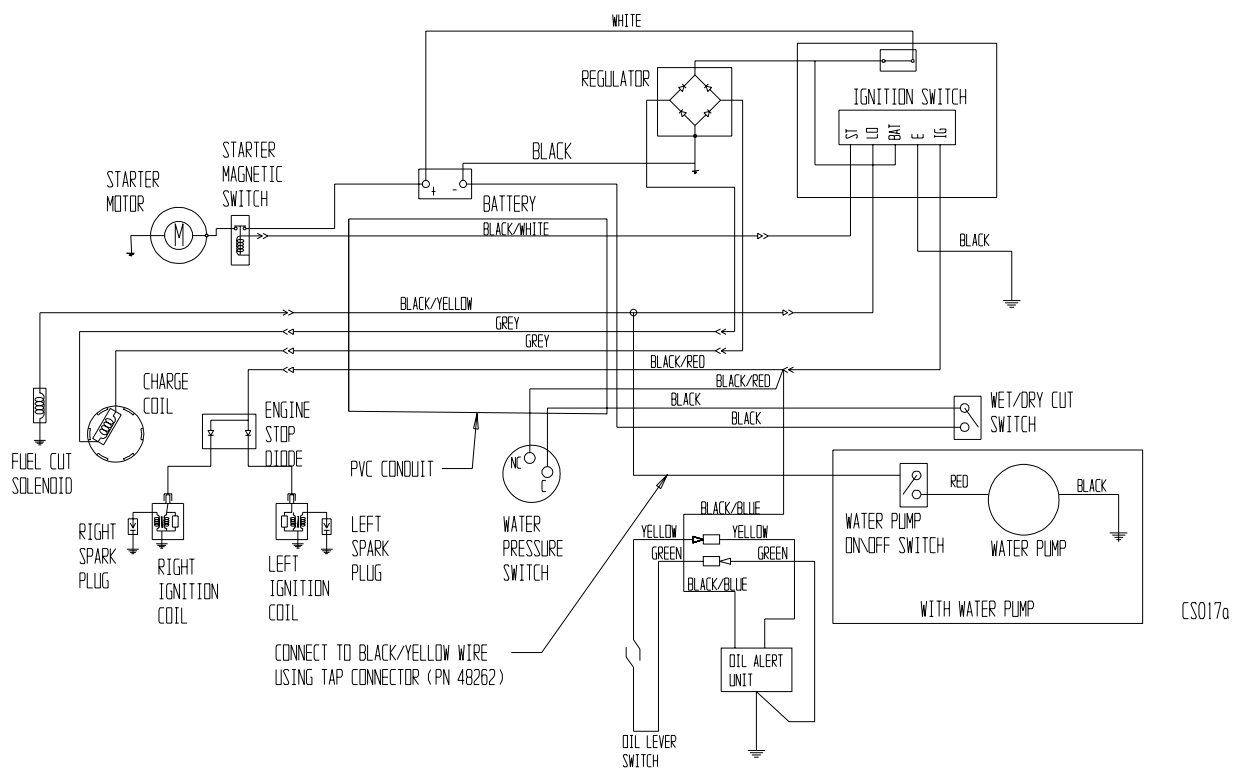


CSP3 WITH 18HP HONDA ENGINES



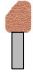
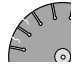
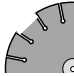
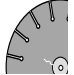
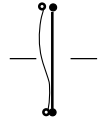
CS008d

CSP3 WITH 20HP HONDA ENGINES



Maintenance

Troubleshooting

PROBLEM	CAUSE	REMEDY
UNEVEN SEGMENT WEAR 	<ul style="list-style-type: none"> • (In wet cutting) Insufficient water (usually on one side of blade). • Equipment defects also can cause the segments to wear unevenly. 	<ul style="list-style-type: none"> • Flush water system. • Check flow to both sides of blade. • Replace bad bearings, worn arbor shaft or misalignment to spindle. • Check alignment for squareness, both vertically and
SEGMENT CRACKS 	<ul style="list-style-type: none"> • Blade is too hard for material being cut. 	<ul style="list-style-type: none"> • Use a blade with a softer bond/matrix.
SEGMENT LOSS 	<ul style="list-style-type: none"> • Blade overheats because of lack of coolant (water or air). • Core is worn from undercutting. • Defective collars/flanges set blade out of alignment. • Blade is too hard for material being cut. • Blade is cutting out of round, causing a pounding motion. • Improper blade tension. 	<ul style="list-style-type: none"> • (Wet Cutting) Check water lines. Make sure flow is adequate on both sides of blade and there are no blockages. Use sufficient water to flush out the cut. • (Dry Cutting) Run blade free of cut periodically to air cool. • Clean collars/flanges or replace if they are under recommended diameter. • Use proper blade specification for material being cut. • Replace worn bearings; realign blade shaft or replace worn blade mounting arbor. • When ordering blades match shaft speed of saw. • Check spindle speed to ensure blade is running at correct RPM. • Avoid twisting or turning blade in the cut.
CRACKS IN CORE 	<ul style="list-style-type: none"> • Blade flutters in cut as a result of losing blade tension. • Blade specification is too hard for the material being cut. 	<ul style="list-style-type: none"> • Tighten the blade shaft nut. • Make sure blade is running at proper speed and that drive pin is functioning properly. • Use a softer bond/matrix to eliminate stress.
LOSS OF TENSION 	<ul style="list-style-type: none"> • Core overheating. • Core overheating as a result of blade spinning on arbor. • Core overheating from rubbing the material being cut. • Unequal pressure at blade clamping collars/flanges. • Blade is too hard for the material being cut. 	<ul style="list-style-type: none"> • Make certain blade RPM is correct. • Check water flow, distribution and lines. • Tighten the blade shaft nut. • Make certain the drive pin is functioning. • Properly align the saw to square cut. • Collars/flanges must be identical in diameter and the recommended size. • Use a softer bond/matrix to reduce stress.

Maintenance

Troubleshooting

PROBLEM

CAUSE

REMEDY

BLADE WOBBLES



- Blade is on a damaged or worn saw.
- Worn collar.
- Blade runs at an incorrect speed.
- Collar /flange diameters are not identical.
- Blade is bent as a result of dropping or twisting.

- Check for bad bearings, bent shaft, or worn mounting arbor.
- Check collars/flanges to make sure they are clean, flat and of correct diameter.
- Set engine at proper rpm.
- Use proper size blade collars/flanges.
- DO NOT USE bent blade.
- Contact blade manufacturer.

BLADE WILL NOT CUT



- Blade is too hard for material being cut.
- Blade has become dull.
- Blade does not cut material it was specified for.

- Select proper blade for material being cut.
- Sharpen by cutting on softer abrasive material to expose diamonds. If continually sharpening, the blade is too hard for the material being cut.
- Break-in on the material to be cut. If it does not dress itself, sharpen as you would a dull

UNDERCUTTING THE CORE



- Abrasive wearing of the core faster than the segments.

- Use water to flush out fines generated during cutting
- Use wear-retardant cores.

ARBOR HOLE OUT-OF-ROUND



- Collars/flanges are not properly tightened, permitting blade to rotate or vibrate on the shaft.
- Collars/flanges are worn or dirty.
- Blade is not properly mounted.

- Make certain the blade is mounted on the proper shaft diameter. Tighten the shaft nut with a wrench to make certain that the blade is secure.
- Clean collars/flanges, make sure they are not worn.
- Tighten arbor nut.
- Make sure the pin hole slides

BLADE WORN OUT OF ROUND



- Shaft bearings are worn.
- Surges occur because engine is not properly tuned.
- Blade arbor hole is damaged from incorrectly mounting the blade.
- Bond/matrix is too hard for material.
- Blade is slipping, wearing one half of blade more than other.

- Install new blade shaft bearings or blade shaft, as required.
- Tune engine according to manufacturer's manual.
- If core is worn or arbor hole damaged, DO NOT USE. Contact blade manufacturer.
- Use proper blade. Consult blade manufacturer.
- Replace worn shaft or mounting arbor bushing.
- Make certain that drive pin is

Lubrication

Lubrication and Service

- Check oil levels, wiring, hoses (air, fuel, water) and lubricate machine daily.
- Repair or replace all worn or damaged components immediately.
- Check drive belt tension, do not over-tension.
- Make sure machine has full set of matched belts.
- Check blade shaft, make sure arbor and threads are not worn, damaged, or bent.
- Blade shaft bearings should be tight, no free play side-to-side or up and down.
- Grease blade shaft bearings daily.
- Blade collars should be clean, free of nicks and burrs. No diameter wear and not out of round.
- Drive pin not excessively worn or bent and free of gouges.
- All guards in place and secure.
- All fasteners tight and secure.
- Air filter/oil filter (hydraulic or engine) clean.
- Flush clean water through the pump and spray the assembly every night. This prolongs the pump and blade life.

Lubricants:

Engine Oil SAE 10W/30 see engine manual

General Grease #1 Lithium

Model 6 Transmissions CSP3 Any SAE20W20

- Clean machine before starting lubrication maintenance.
- Insure machine is on solid, level ground before starting maintenance.
- During lubrication maintenance insure strict cleanliness is observed at all times.
- To avoid the risk of accidents, use the correct tool for the job and keep tools clean.
- The draining of engine oil is best carried out when the oil is warm NOT hot.
- Any spilled oil must be cleaned up immediately.
- Use only clean containers for oil and only CLEAN, FRESH oils and grease of correct grade.
- Contaminated Water/Fluids/Oils/Filters Must Be Disposed of Safely.

Lubrication

Service Record Chart

SERVICE RECORD

Model No. _____ Serial No. _____

Note: See Engine Manual for Frequency and Part Numbers

Date	Engine Oil	Engine Oil Filter	Fuel Filter	Air Filter	Spark Plugs	Transmission Fuel

Notes:



Table of Contents

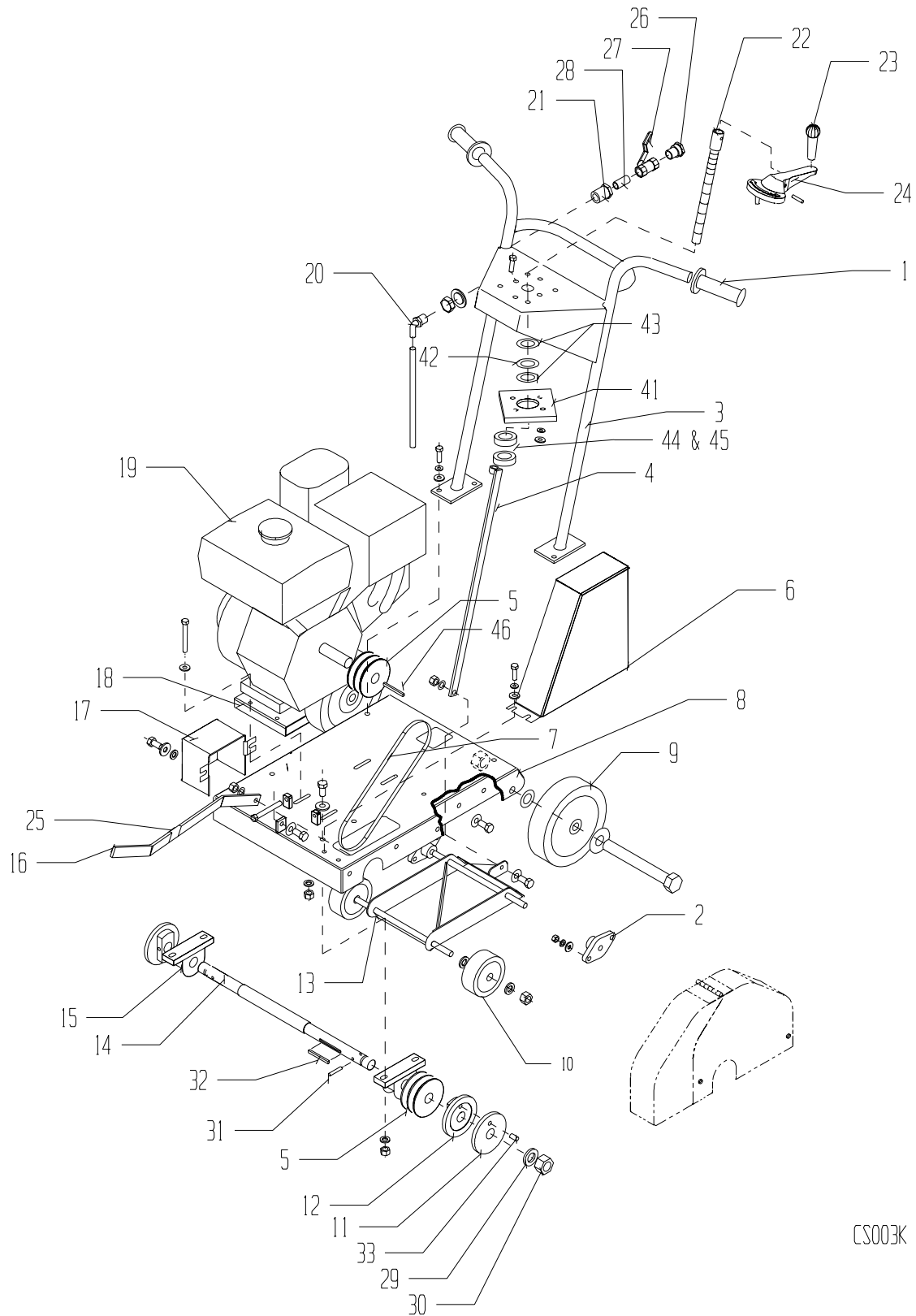
Concrete Saws

EXPLODED DIAGRAMS & PARTS LIST	26-63
CS1 Assembly	27-33
CS2 Assembly	34-43
CSP3 Console Assembly	44-49
CSP3 Base Assembly	50-55
Blade Guard Assembly	56-57
Water Pump Assembly	58-59
Water Tank Option Assembly	60-61
Decal Identification	62-63

SPECIAL NOTE: All metric hardware to be class 8.8 and all imperial hardware to be grade 2 or better.

PARTS LIST

CS1 Saw Assembly



CS003K

PARTS LIST

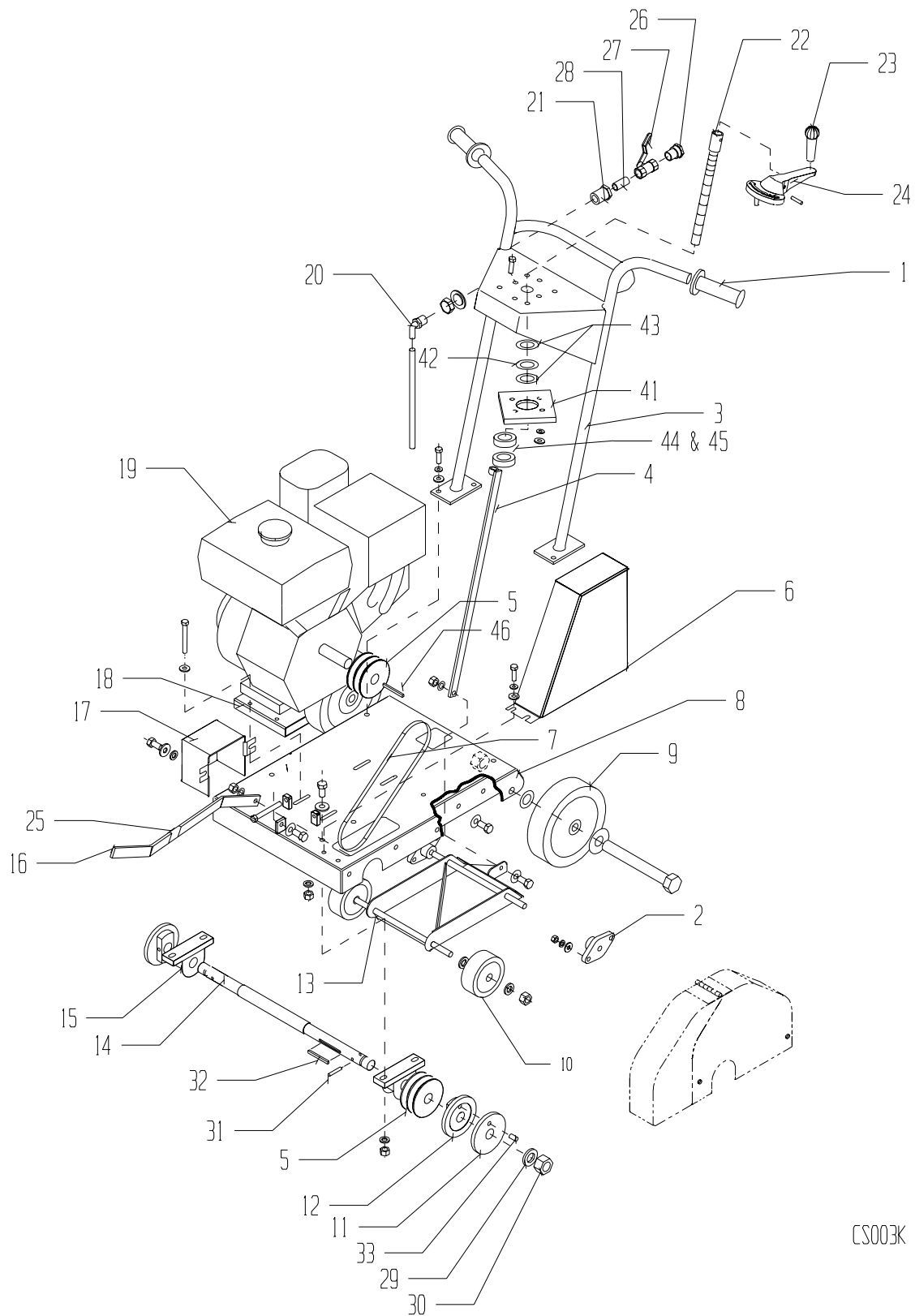
CS1 Saw Assembly

Item	Part No.	Description	Qty.
1	47125	Hand Grip	2
2	32295	Flange Bearing	2
3	43374-2	Handle Weldment	1
4	43398-2	Tilt Arm Weldment	1
5	39125	Sheave 3.75 OD	2
6	43393-2	Belt Guard Weldment	1
6a	43288-2	Belt Guard Weldment 11 Honda	1
7	39160	V-Belt	2
8	39299-2	Base Weldment	1
9	39163	Rear Wheel	2
10	39106	Front Wheel	2
11	43454-2	Outside Collar Blade	2
12	43437-2	Inside Collar Blade	2
13	39298-2	Tilt Carriage Weldment	1
14	43365	Blade Shaft	1
15	32296	Pillow Block Bearings	2
16	43389-2	Pointer	1
17	43480-2	Shaft Guard	1
18	43476-2	Engine Deck	1
19	30600	Engine 9 hp Robin	1
19a	30160	Engine 8 hp Honda	1
19b	43285	Engine 11 hp Honda	1
19c	30559	Engine 11 hp Honda Cyclone	1
20*	39169	3/8 Hose to 1/2 NPT 90° Fitting	1
21*	39154	Bulk Head 1/2 NPT Fitting	1
22+	43279-2	Adjustment Screw Weldment	1
23+	41036	Tilt Crank Knob	1
24+	41035	Hand Crank	1
25	39524	Bumper Pointer	1
26	46439	Garden Hose Fitting	1
27*	46144	1/2 NPT Ball Valve	1
28*	39142	1/2 NPT Close Nipple	1
29	39158	Washer 1 inch Internal Star	2
30	39157	Nut 1 inch - 14	2
31	39165	5/16 Spring Pin	2
32	80717	Key 1/4x2-3/4	1

Remarks: ^ Not Shown
 * Components of Item 36
 + Components of Item 39

PARTS LIST

CS1 Saw Assembly



CS003K

PARTS LIST

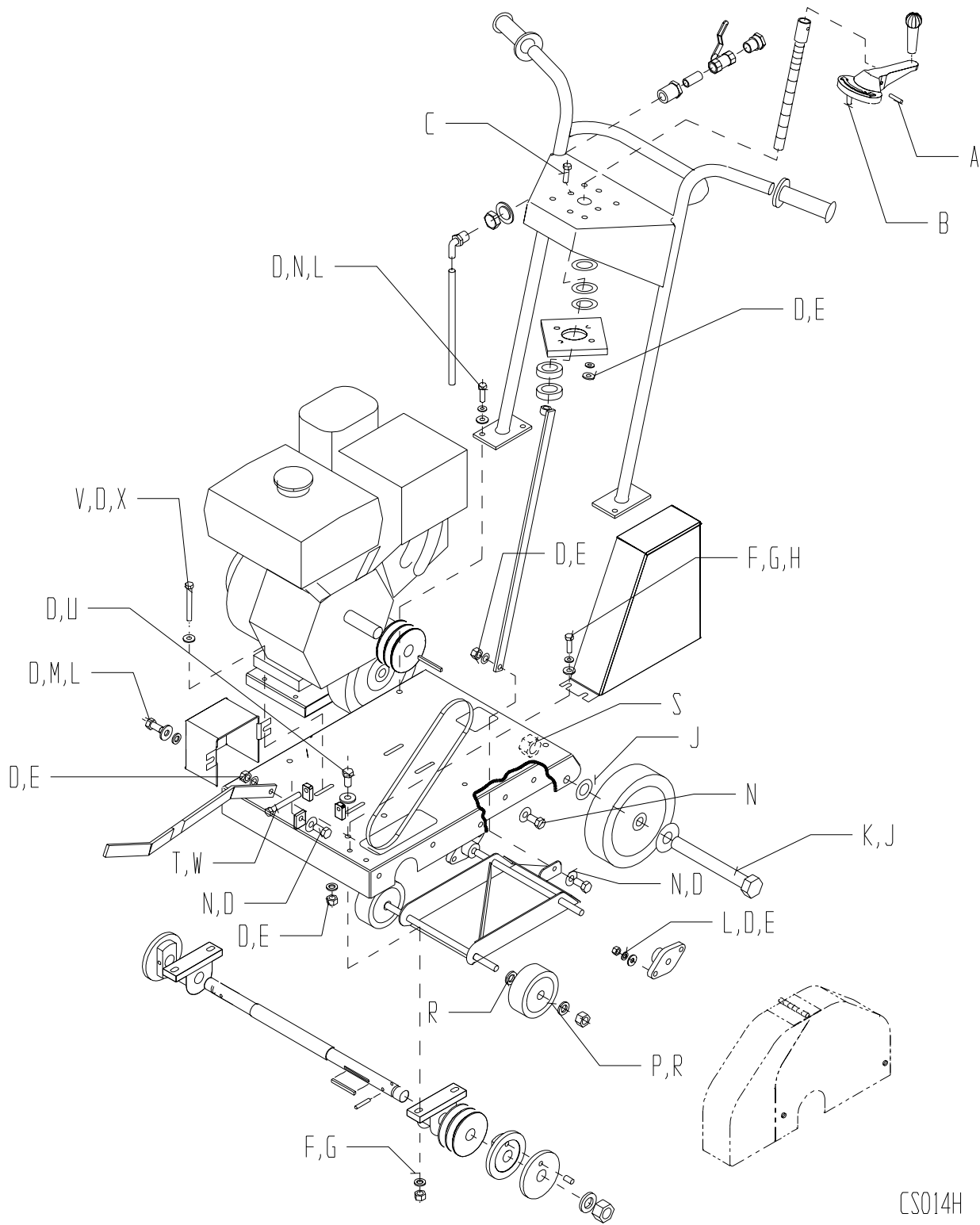
CS1 Saw Assembly

Item	Part No.	Description	Qty.
33	80773	3/8x1 Dowel Pin	2
34	55279	Decal CSI Console	1
35^	43375-2	Wrench	2
36^	39156	Plumbing Kit	1
37^	39191	Rubber Bumper	3
38^	48356	Hose Clamp	2
39^	23029	Kit Crank Flange Bearing Assembly	1
40^	23045	Kit Plumbing Gas	1
41^	32321	Bearing Housing Thrust	1
42	32322	Thrust Bearing 3/4 Bore	1
43	32323	Thrust Washer 3/4 Bore	2
44	36592	Thrust Bearing Spacer	1
45	36605	Shaft Collar 3/4" ID	1
46	80061	Key 1/4 x 1-1/2 (except 11hp Honda)	1
46a	80100	Key 1/4 x 1 (11hp Honda)	1

Remarks: ^ Not Shown
 * Components of Item 36
 + Components of Item 39

PARTS LIST

CS1 Saw Assembly



PARTS LIST

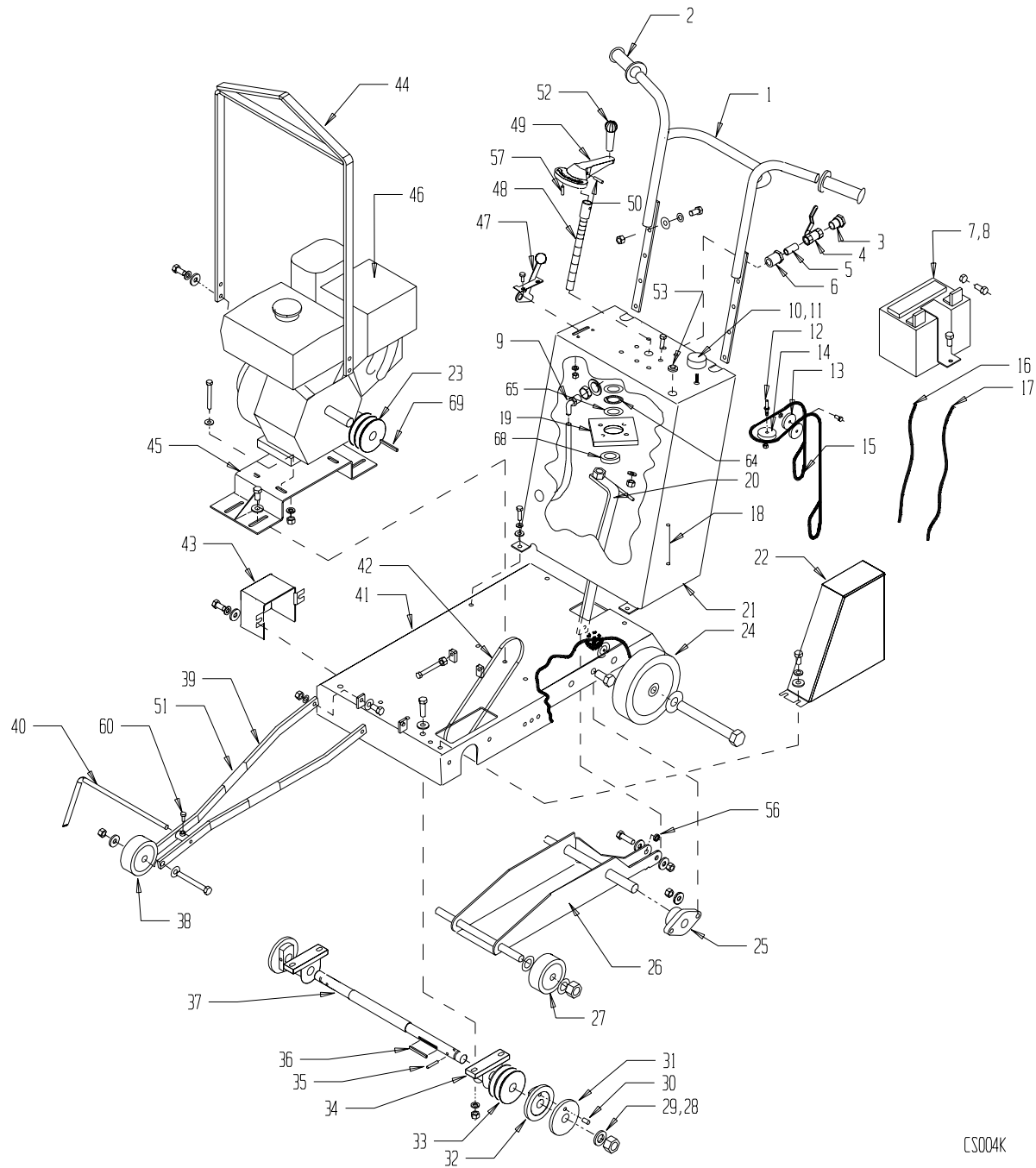
CS1 Saw Assembly

Item	Part No.	Description	Qty.
A+	80775	PINSP 1/4 x 1-1/4 ZN	1
B+	80557	PINDL 1/4 x 3/4	1
C	80848	BHCS M10-1.5 x 35	4
D	80806	M10 FLAT WASHER (8,11 H)	40
E	80833	M10 NYLOK NUT (8,11H)	18
F	80406	HHCS M8-1.25 x 20	6
G	80812	M8 LOCK WASHER	4
H	80857	M8 FLAT WASHER	6
J	80355	5/8 WASHER	4
K	80768	HHCS 5/8-11 x 6.00 IN	2
L	80804	M10 LOCK WASHER	18
M	80618	HHCS M10-1.5 x 25	3
N	80815	HHCS M10-1.5 x 30	10
P	80051	1/2-13 NYLOK NUT	2
R	80343	1/2 FLAT WASHER	4
S	80082	NUTNY 5/8-11 ZN	2
T	80841	HHCS M10-1.5 x 90	2
U	80838	HHCS M10-1.5 x 50	4
V	80839	HHCS M10-1.5 x 70	4
W	80866	M10-1.5 PLAIN NUT	2
X	80804	M10 LOCK WASHER	4

Remarks: ^ Not Shown
 * Components of Item 36
 + Components of Item 39

PARTS LIST

CS2 Saw Assembly



CS004K

PARTS LIST

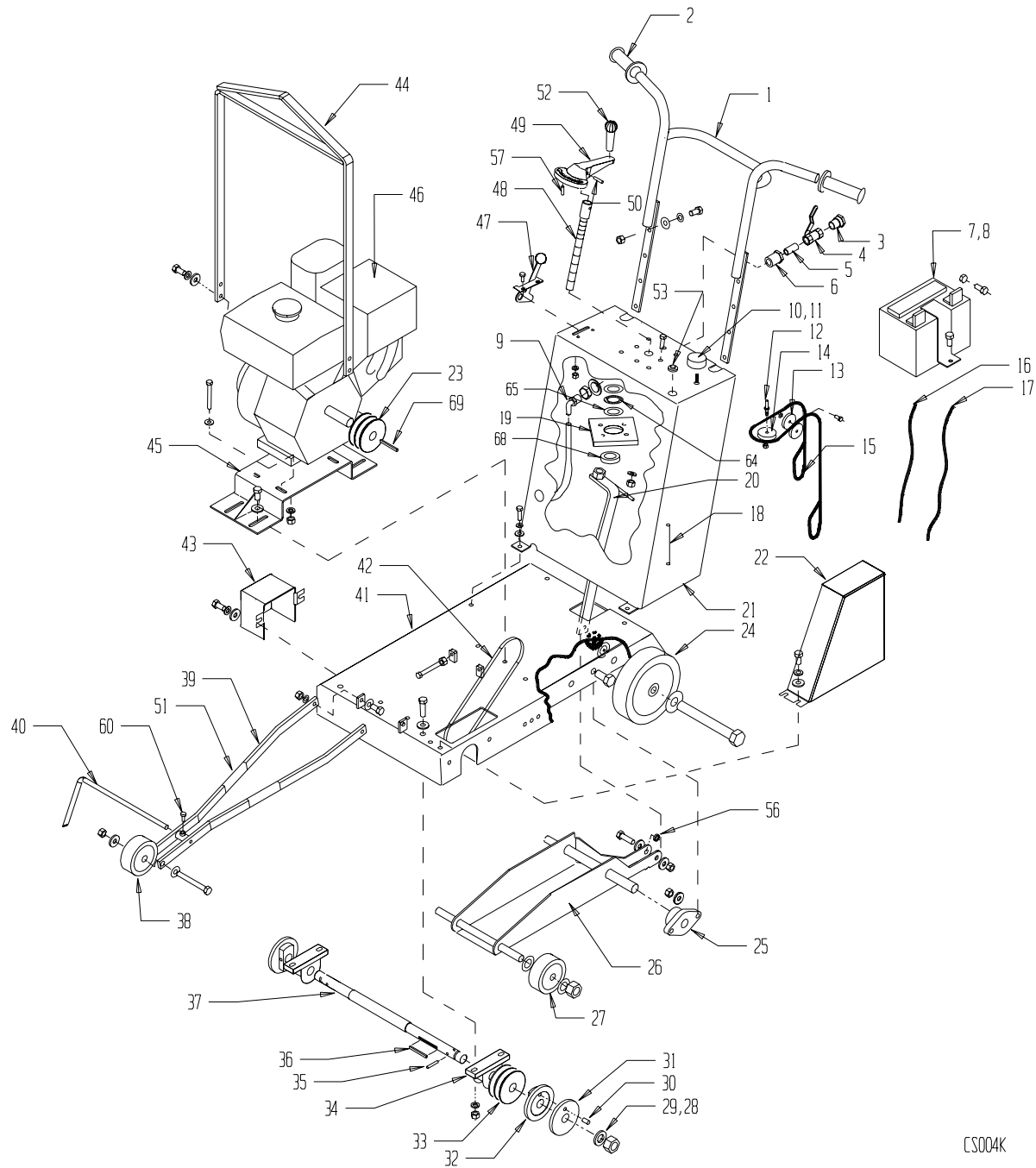
CS2 Saw Assembly

Item	Part No.	Description	Qty.
1	43459-2	Handle Weld CS2	1
2	47125	Grip Handle	2
3*	46439	Garden Hose Fitting	1
4*	46144	1/2 Npt Ball Valve	1
5*	39142	1/2 Npt Close Nipple	1
6*	39154	1/2 Brass Bulkhead	1
7	35321	Battery 1 Year 165 CC (16 B&S)	1
8	43497-2	Battery Strap (16 B&S)	1
9*	39169	90° 1/2 Npt (M) X 3/8 In Hose Barb	1
10	39180	Knob Depth Gauge	1
11	39164	Bushing Bronze Depth Gauge	1
12	43362	Shaft Depth Gauge CS2/CSP3	1
13	39118	Pulley A6T9-02808	2
14	39117	Pulley A6M9-03110	1
15	36449	Assy Cable Depth Gauge	1
16	48355	Cable Battery 52 In Red (16 B&S)	1
17	48331	Cable Battery 36 In Black (16 B&S)	1
18	39121	Spring Extension Depth	1
19	32321	Bearing Housing Thrust	1
20	43490-2	Arm Tilt Weld CS2	1
21	43383-2	Weldment Console CS2	1
22	43468-2	Belt Guard Weldment CS2	1
23	39125	Sheave 3.75 OD 2B	1
23a	39168	Sheave 3.75 OD 2B (5 Elec)	1
24	39105	Wheel 8 In Diameter	2
25	32294	Flange Bearing	2
26	43461-2	Weldment Tilt Bracket CS2	1
27	39104	Wheel 4 In Diameter	2
28	39157	Nut Half Height 1in-14	2
29	39158	Washer 1 In Internal Star	2
30	80773	Pindl 3/8 X 1 Hard	2
31	43454-2	Outside Collar	2
32	43437-2	Collar Blade Inside	2
33	39124	Sheave 3.75 OD 2B	1
34	32293	Pillow Block Bearing	2
35	39165	Pinsp 5/16 X 1-1/2 Zn	2

Remarks: ^ Not Shown
 * Components of Item 66
 + Components of Item 67

PARTS LIST

CS2 Saw Assembly



CS004K

PARTS LIST

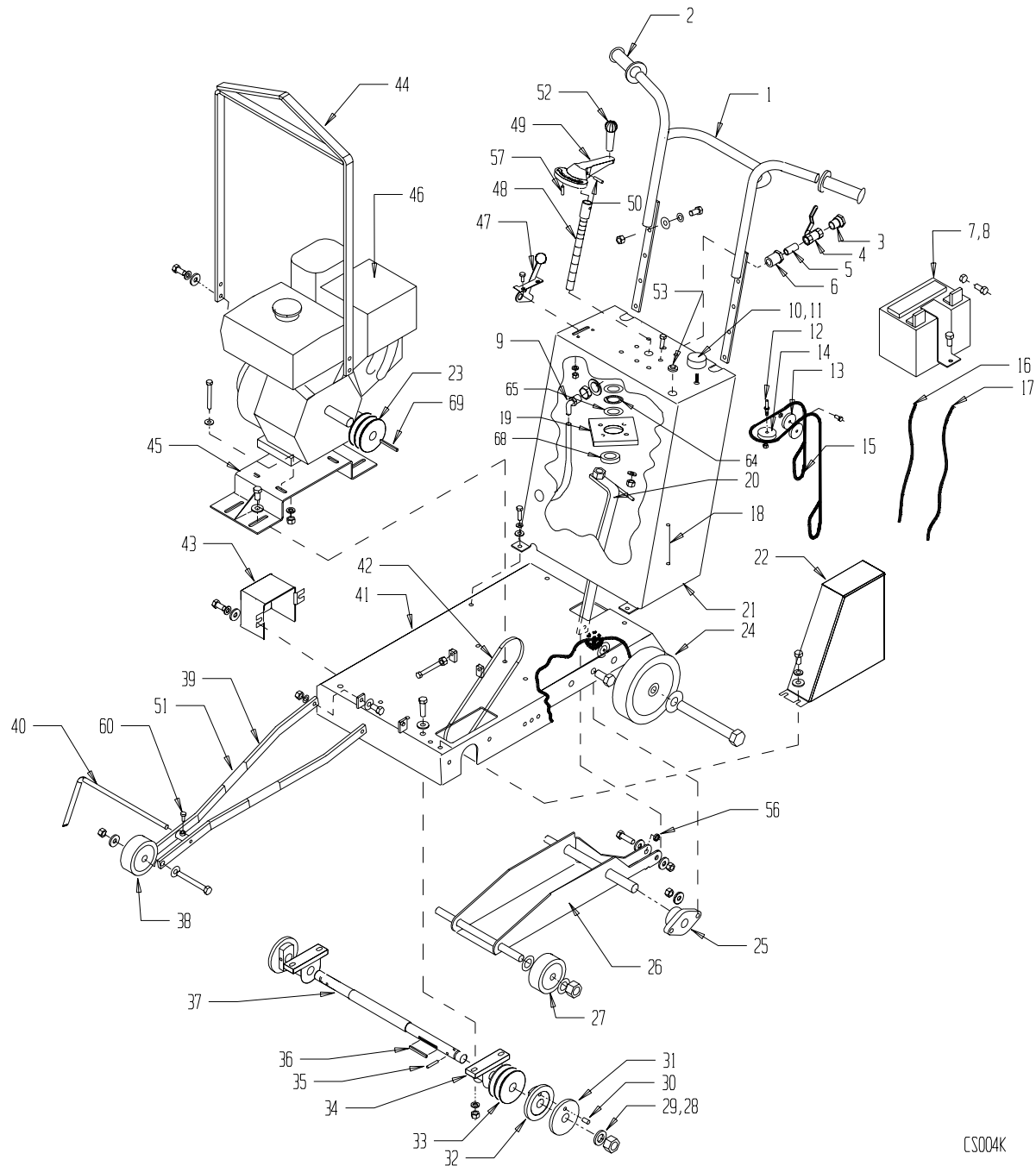
CS2 Saw Assembly

Item	Part No.	Description	Qty.
36	37717	Key 1/4 X 1/4 X 2-3/16	1
37	43453	Shaft Blade CS2	1
38	39106	Wheel 4 In Diameter (Pointer)	1
39	43494-2	Weld Pointer Front CS2/CSP3	1
40	43489-2	Rod Pointer	2
41	43460-2	Base Weldment CS2	1
42	39159	V-Belt B-33	2
43	43480-2	Guard Shaft All	1
44	43487-2	Weldment Lift Bale CS2	1
45	43329-2	Weldment Motor Deck 9 B&S/5Elec	1
45a	43385-2	Weldment Motor Deck 11,13h/16 B&S	1
46	39136	Engine 9 hp B&S	1
46a	39133	Engine 11 hp Honda Cyclone	1
46b	39131	Engine 13 hp Honda Cyclone	1
46c	39135	Engine 16 hp B&S	1
46d	39137	Engine 5 hp Electric	1
47	39113	Control Throttle	1
48+	43279-2	Weld Adjust Screw All	1
49+	41035	Hand Crank	1
50+	80775	PINSP 1/4 X 1-1/4 ZN	1
51	39524	Bumper Pointer	2
52+	41036	Knob Tilt Crank	1
53	37136	Kill Switch/Plug	1
53a	47377	Kill Switch/Plug 5 Elec	1
54^	43326	Wire Harness Kill Switch (9 B&S, 11/13H)	1
54a	43327	Wire Harness Kill Switch (16 B&S)	1
55^	43375-2	Wrench Saw Blade	2
56	43388-2	Spacer Tilt Arm CS2/CSP3	2
57+	80557	Dowel Pin 1/4 X 3/4	1
58^	55280	Decal CS2 Console	1
59^	36398	Cable Plug (5 ELEC)	1
60	80893	THBSC M8 x 20 8.8 ZN	2
61^	48356	Hose Clamp 5/8 OD	2
62^	39191	Rubber Bumper	3

Remarks: ^ Not Shown
 * Components of Item 66
 + Components of Item 67

PARTS LIST

CS2 Saw Assembly



CS004K

PARTS LIST

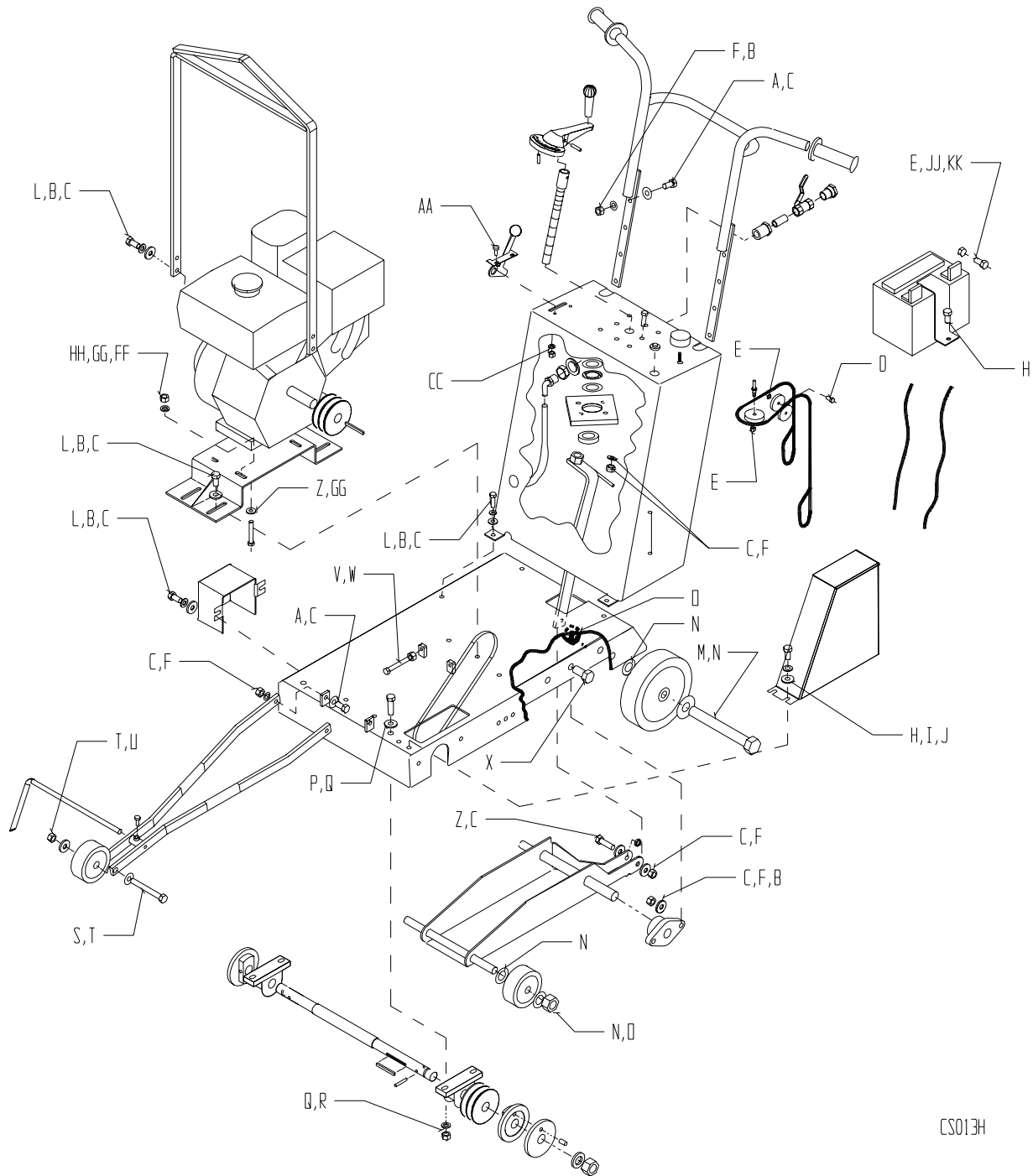
CS2 Saw Assembly

Item	Part No.	Description	Qty.
63^	39192	Exhaust Deflector (B&S)	1
64	32322	Thrust Bearing 3/4 Bore	1
65	32323	Thrust Washer 3/4 Bore	2
66^	39156	Plumbing Kit	1
67^	23029	Kit Crank Flange Bearing Assy	1
68	36605	Shaft Collar 3/4" ID	1
69	37717	Key 1/4 x 1/4 x 2-3/16 (except 11 Honda)	1
69a	80100	Key 1/4 x 11 (11 Honda)	1

Remarks: ^ Not Shown
* Components of Item 66
+ Components of Item 67

PARTS LIST

CS2 Saw Assembly



CS1013H

PARTS LIST

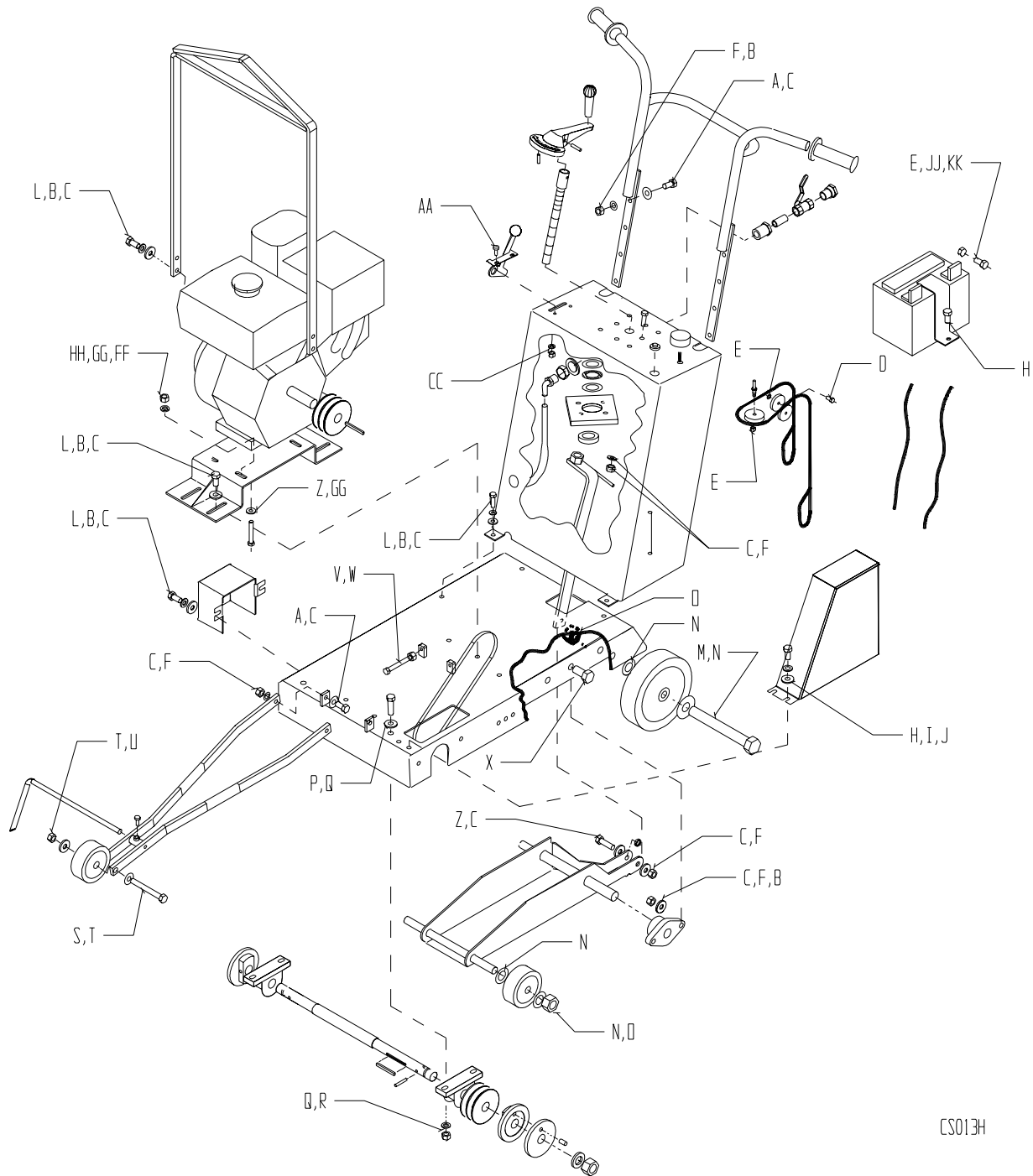
CS2 Saw Assembly

Item	Part No.	Description	Qty.
A	80815	HHCS M10-1.5X30 8.8 ZN	6
B	80804	M10 Lock Washer (Honda, Elec)	22
C	80806	M10 Flat Washer (Honda, Elec)	30
D	80771	SHSHB 1/4 X 5/8 ZN	2
E	80236	NUTKP 1/4-20 ZN	5
F	80833	NUTNY M10-1.5 ZN	19
G	80848	BHSCS M10 X 1.5 X 35 BN	4
H	80406	HHCS M8-1.25 X 20 ZN	7
I	80857	WASHER M8 X 16 FLAT ZN	4
J	80812	WSHRL M8 X 14.8 ZN	4
K	80236	NUTKP 1/4 x 20 ZN	2
L	80618	HHCS M10-1.50 X 25MM ZN	14
M	80767	HHCS 3/4-10 X 7-1/2 ZN	2
N	80344	WASHER 3/4 SAE ZN PL	8
O	80769	NUTNY 3/4-10 ZN	4
P	80844	HHCS M12 X 1.75 X 50 ZN	4
Q	80807	WASHER M12 X 24 FLAT ZN	8
R	80830	NUTNY M12-1.75 ZN	4
S	80196	HHCS 1/2-13 X 3-1/2 ZN	1
T	80343	WASHER 1/2 SAE ZN PL	2
U	80051	NUTNY 1/2-13 21N6813 ZN	1
V	80841	HHCS M10 X 1.5 X 90 ZN	2
W	80866	NUTFX M10-1.5 ZN	2
X	80837	HHCS M10 X 1.5 X 40 ZN	4
Z	80839	HHCS M10 X 1.5 X 70 ZN	1
Z1	80838	HHCS M10 -1.5 X 50 ZN (Honda)	4
Z2	80883	HHCS M8-X 1.25 X 50 ZN (B&S)	4
Z3	80815	HHCS M10 - 1.5 X 30 ZN (Elec)	4
AA	80847	BHSCS M6 X 1 X 20 BN19	2
CC	80851	NUTNY M6 X 1 ZN BN161	2
FF	80812	M8 SPLIT WASHER (B&S)	4
FF1	80804	M10 SPLIT WASHER (Honda,Elec)	4
GG	80857	M8 Flat Washer (B&S)	8
GG1	80806	M10 Flat Washer (Honda,Elec)	8

Remarks:

PARTS LIST

CS2 Saw Assembly



HE1053

PARTS LIST

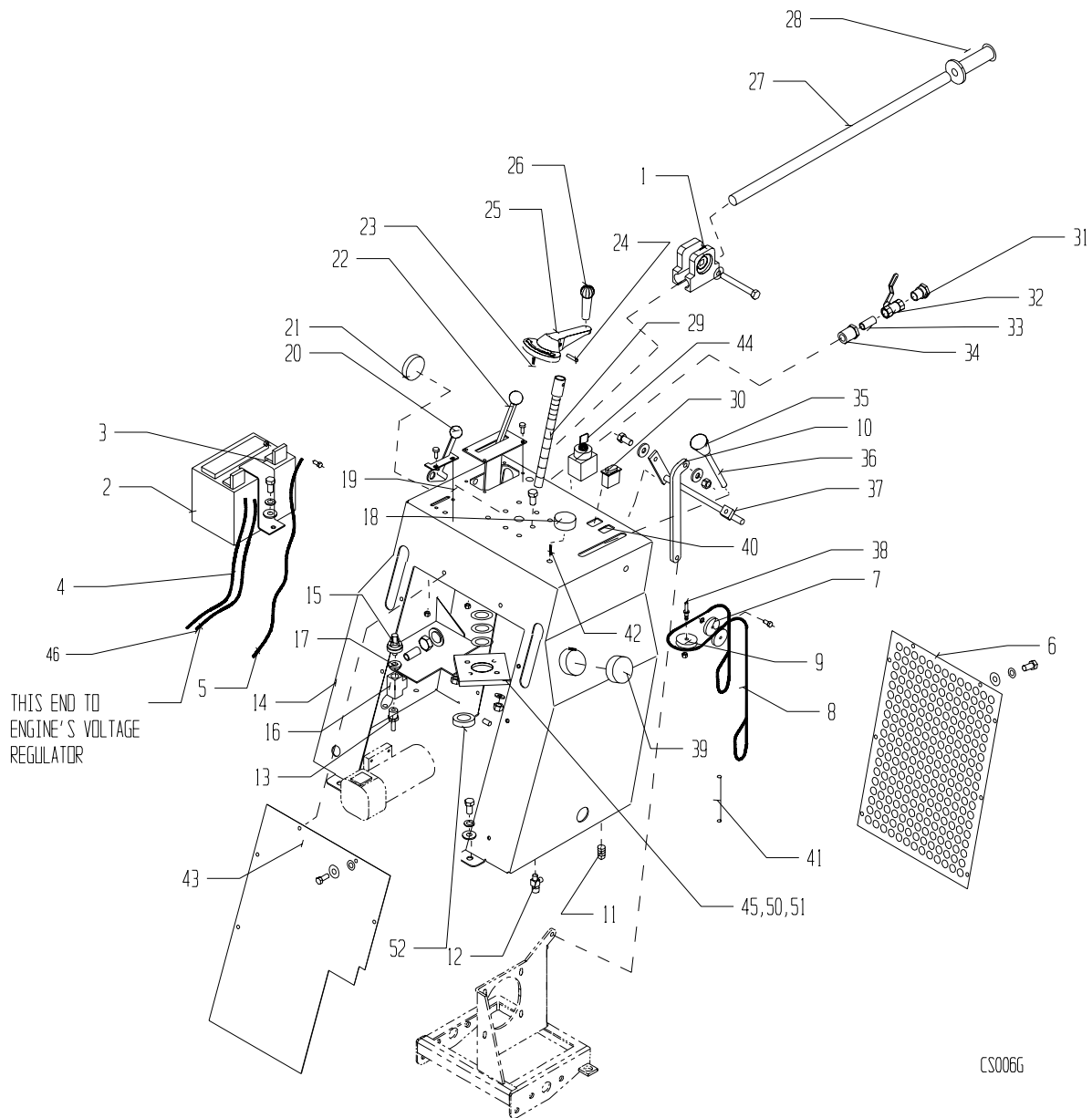
CS2 Saw Assembly

Item	Part No.	Description	Qty.
HH	80817	M8-1.25 Nylok Nut (B&S)	4
HH1	80833	M10-1.5 Nylok Nut (Honda, Elec)	4
JJ	80354	HHCS 1/4-20 X 1.00 IN	2
KK	80571	WSHR FLAT 1/4	4

Remarks:

PARTS LIST

CSP3 Console Assembly



PARTS LIST

CSP3 Console Assembly

Item	Part No.	Description	Qty.
1	43426	Pivot tube handle	4
2	35321	Battery 1 year, 165CC (16B&S, 18/20H)	1
3	43497	Strap, battery hold down (16B&S, 18/20H)	1
4	48331	Cable battery 36", black (16B&S, 18/20H)	1
5	48355	Cable battery 52", red (16B&S, 18/20H)	1
6	43381-2	Guard-rear cowl	1
7	39118	Pulley A6T9-02808	2
8	36450	Assy cable depth gauge	1
9	39117	Pulley A6M9-03110	1
10	43414-2	Linkage engagement	1
11	38147	Plug 1/8 npt	1
12	46009	Petcock valve & strainer/plug	1
13	39141	Barb hose 1/2 x 3/8	1
14	43499-2	Console weldment	1
15	39126	Switch pressure	1
16	39143	1/2 brass pipe tee	1
17	39144	1/2x1/8 brass reducer	1
18	39180	Knob depth gauge	1
19	35456	Choke Control (16 B&S, 18/20 Honda)	1
19a	47376	Hole Plug (13 Honda)	1
20	39113	Control throttle	1
21	37169	Knob round 2-3/8 blk	2
22	39114	Quadrant control	1
23*	80557	1/4 x 3/4 dowel pin	1
24*	80775	1/4 x 1-1/4 spring pin	1
25*	41035-2	Hand crank	1
26*	41036	Knob tilt crank	1
27	43430	Handle tube	2
28	47125	Grip handle 1" rubber	2
29	43279	Adjustment screw weld	1
30	38562	Switch rocker on/off	1
31	46439	Garden hose fitting	1
32	46144	1/2 ball valve	1
33	39142	1/2 close nipple	2
34	39154	1/2 npt brass bulkhead	1
35	47298	Knob ranger	1

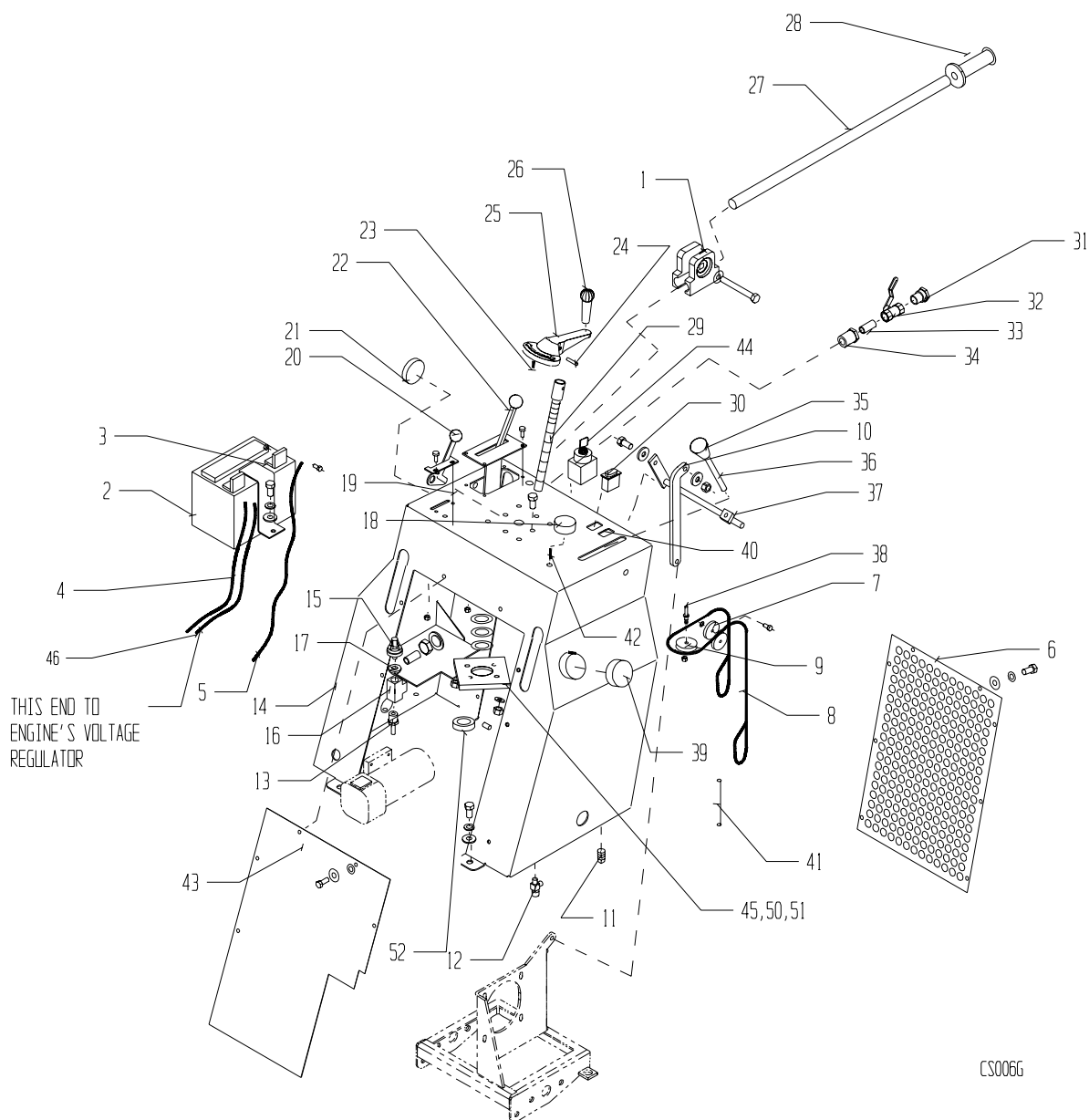
Remarks:

^ Not Shown

* Components of Item 46

PARTS LIST

CSP3 Console Assembly



PARTS LIST

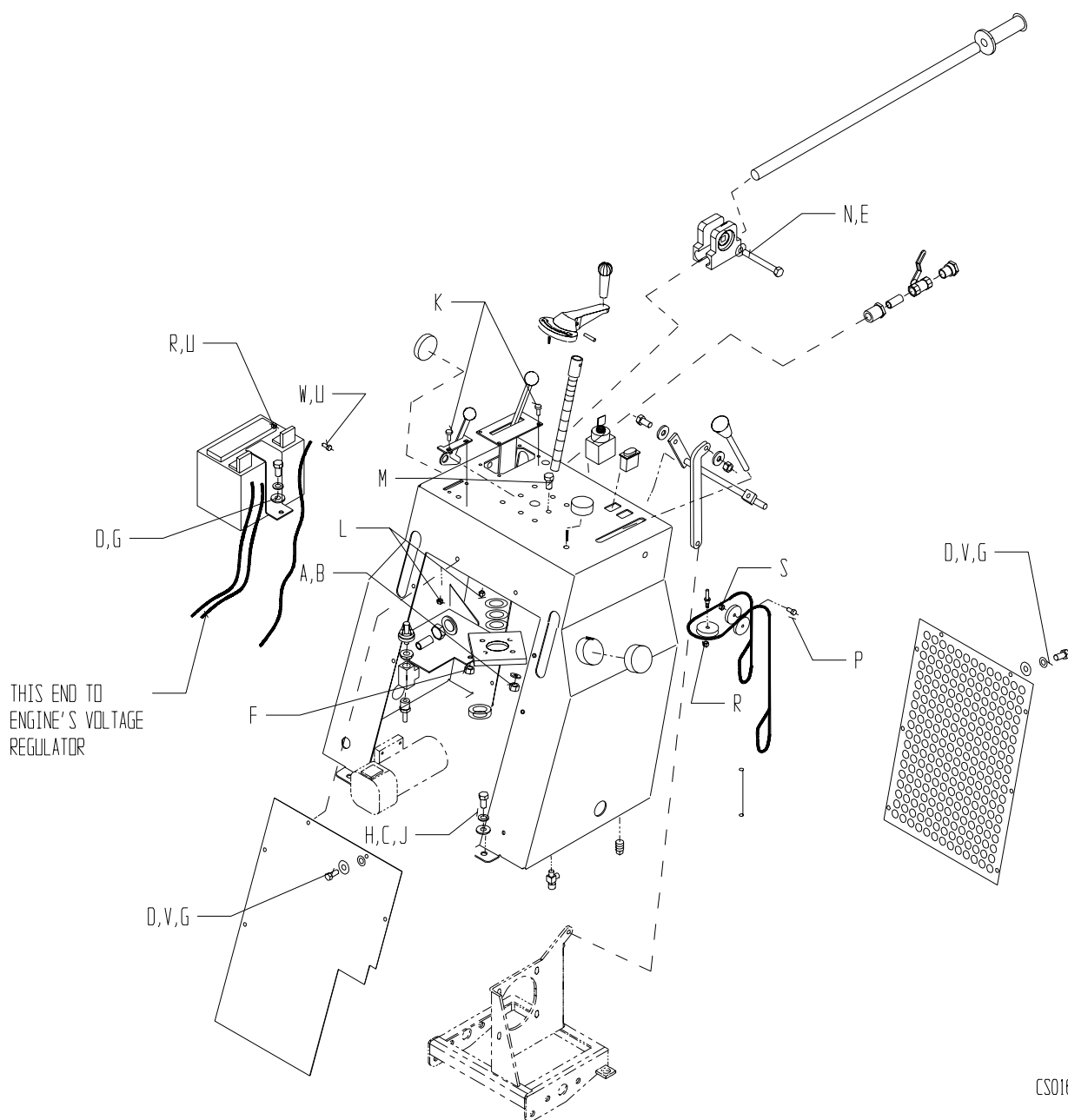
CSP3 Console Assembly

Item	Part No.	Description	Qty.
36	42135	Drive lever	1
37	43434-2	Weld engagement linkage	1
38	43362	Shaft depth gauge	1
39	46059	Cap fuel & water	1
40	39116	Switch blank (less water pump)	1
41	39121	Spring extension depth gauge	1
42	39164	Bushing bronze depth gauge	1
43	43318-2	Panel front (13H)	1
43a	43491-2	Panel front	1
44	47377	Hole Plug (13H)	1
44a	31276	Ignition switch (18/20H)	-
44b	46363	Key ignition switch	-
44c	36399	Fuse 25A ignition	-
45	32321	Bearing housing thrust	1
46^	23029	Kit crank acme assy	1
47^	55281	Decal console	1
48^	48356	5/8 OD hose clamps	4
49^	39191	Rubber bumper	3
50	32322	Thrust bearing 3/4 bore	1
51	32323	Thrust washer 3/4 bore	2
52	36605	Shaft Collar 3/4" ID	1

Remarks: ^ Not Shown
 * Components of 46

PARTS LIST

CSP3 Console Assembly



CS016G

PARTS LIST

CSP3 Console Assembly

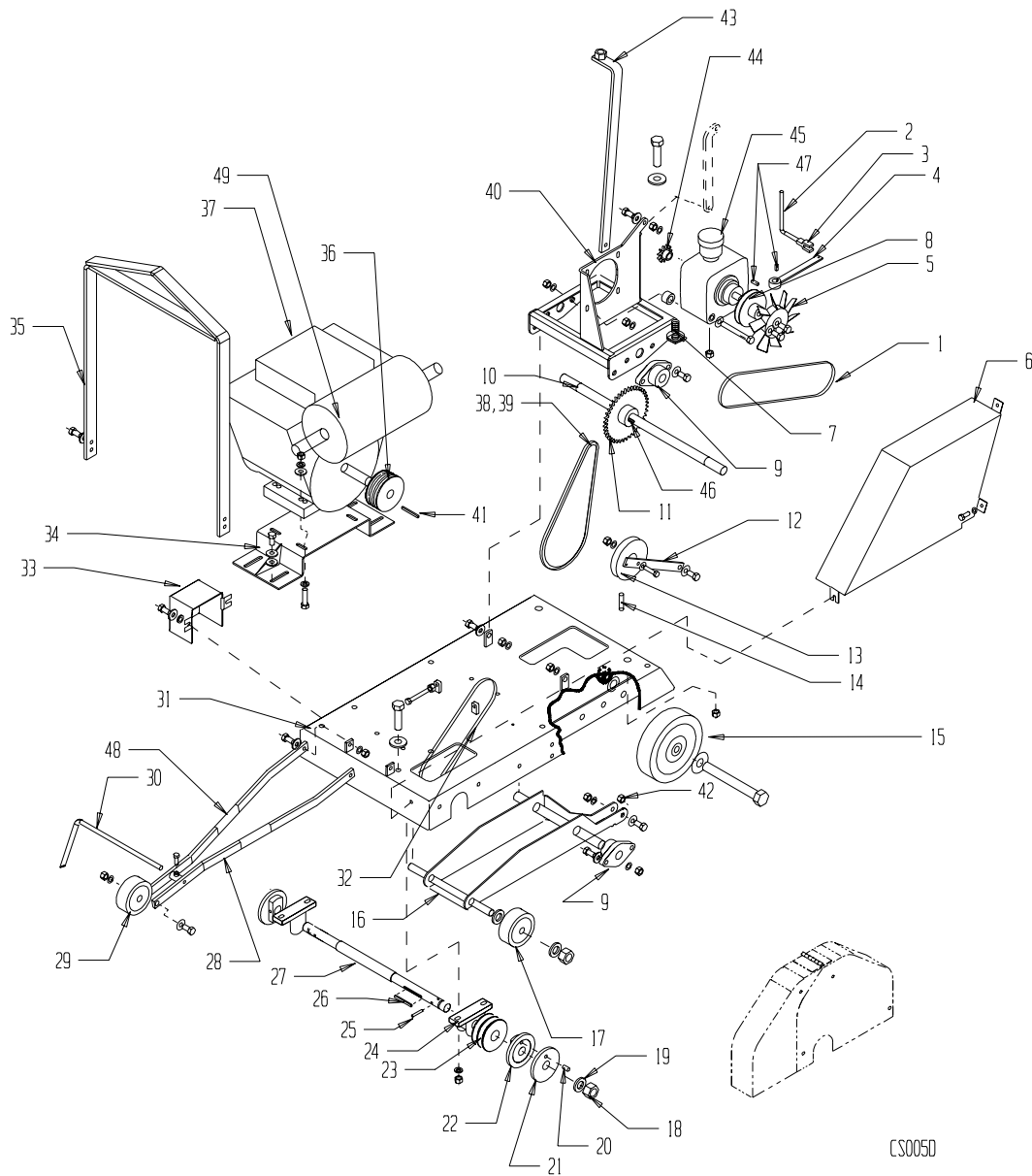
Item	Part No.	Description	Qty.
A	80806	Washer M10 x 20 Flat	10
B	80833	M10-1.4 NYLOK Nut	5
C	80807	Washer M12 x 24 Flat	2
D	80406	HHCS M8-1.25 x 20	15
E	80343	Washer 1/2 Flat	2
G	80857	Washer M8 x 16 Flat	15
H	80843	HHCS M12-1.75 x 30	4
J	80805	Washer M12 x 20 Flat	2
K	80847	BHSCS M6-1 x 12	6
L	80851	M6-1 NYLOK Nut	6
M	80848	BHSCS M10-1.5 x 35	4
N	80770	CRBLT 1/2-13 x 2IN	2
P	80771	SHSHB 1/4 x 5/8IN	2
R	80236	NutKP 1/4-20	3
S	80693	#10-24 NYLOK Nut	2
T	80830	Nut M12-1.75 NYLOK	2
U	80571	Washer M8 x 16 Flat	4
V	80812	Washer M8 x 14.8 Lock	15
W	80354	HHCS 1/4-20 x 1 GR5	2
X^	80847	BHSCS M6-1 x 12 (18/20H)	2
Y^	80315	Cotter Pin 3/16 x 2 ZN	1

Remarks:

^ Not Shown

PARTS LIST

CSP3 Base Assembly



CS005D

PARTS LIST

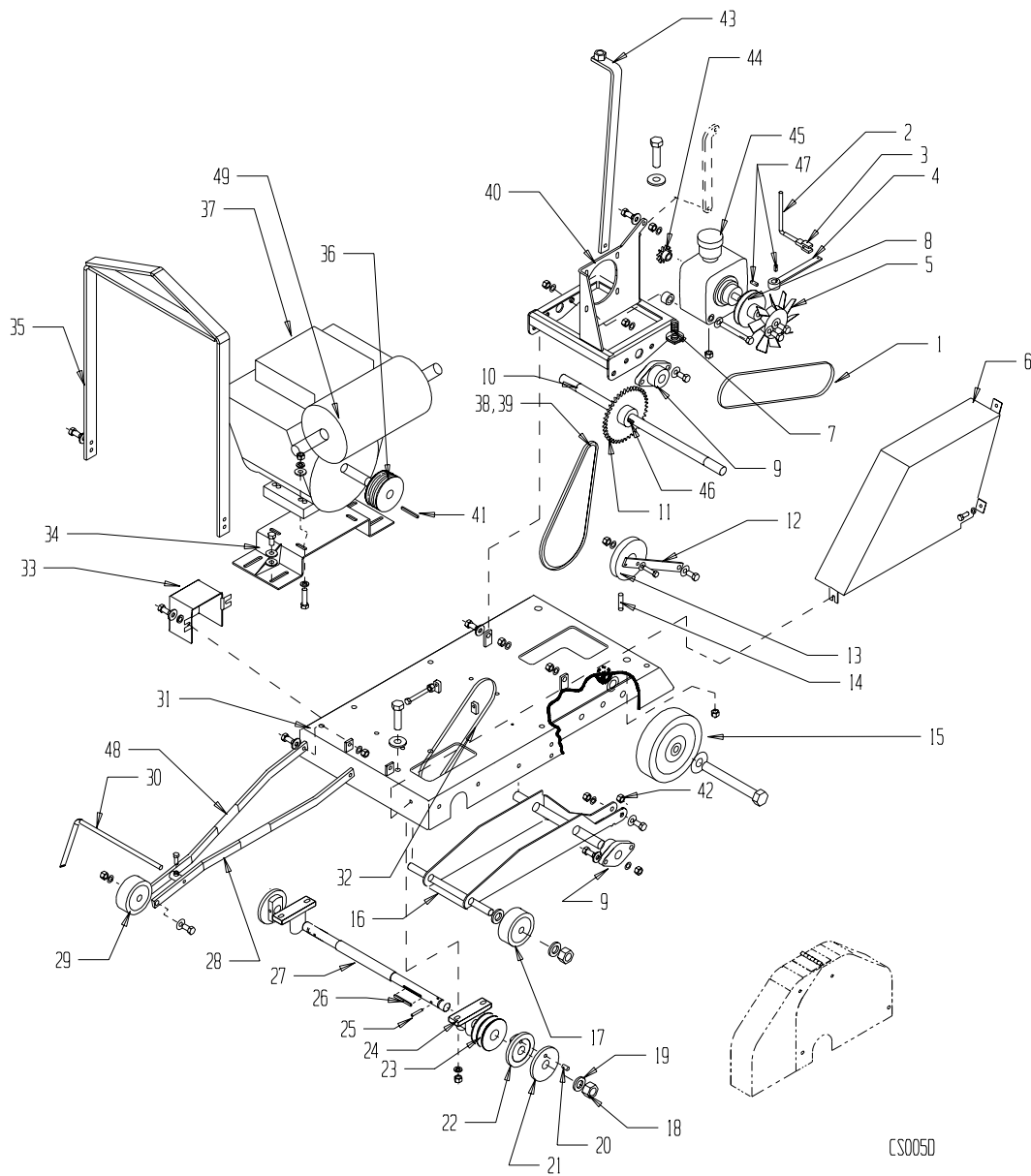
CSP3 Base Assembly

Item	Part No.	Description	Qty.
1	39176	V-Belt A-48 (13HP HONDA)	1
1a	35277	V-Belt A-45 (16 HP B&S, 18/20HP HONDA)	1
2	39115	Cable Control For/Rev	1
3	39166	Clevis	1
4	43322-2	Shifter Bar Weld	1
5	36678	7" Dia. Fan, CW Rotation	1
6	43320-2	Belt Guard Weldment (13HP HONDA)	1
6a	43465-2	Belt Guard Weldment (16HP B&S, 18/20HP HONDA)	1
7	39120	Spring, Compression	2
8	39101	Pulley	1
9	32294	Flange Bearing	4
10	39363	Shaft Drive	1
11	39107	Sprocket 40b40, 1" Bore	1
12	43441	Idler Arm	1
13	35203	Vee-Idler Pulley	1
14	38207	Spring, Extension	1
15	39105	Wheel 8" Dia.	2
16	43444-2	Tilt Bracket Weldment	1
17	39104	Wheel 4" Dia.	2
18	39157	Nut 1"-14 Half Height	2
19	39158	Washer 1" Internal Star	2
20	80773	Pin 3/8 X 1"	2
21	43454-2	Collar Outside Universal	2
22	43437-2	Collar Inside	2
23	39123	Sheave 3.75, 3b, 1-1/4 Bore	1
24	32293	Pillow Block Bearing	2
25	39165	5/16 X 1-1/2 Spring Pin	2
26	80717	Square Key .25 X 2.75	1
27	43436	Blade, Shaft	1
28	43494-2	Pointer Bar Weld	1
29	39106	Wheel 4" Dia., Pointer	1
30	43489-2	Pointer Rod	2
31	43406-2	Base Weld	1
32	39112	V-Belt B34 (13HP HONDA)	3
32a	39159	V-Belt B33 (16HP B&S, 18/20HP HONDA)	3

Remarks: ^ Not Shown

PARTS LIST

CSP3 Base Assembly



CS0050

PARTS LIST

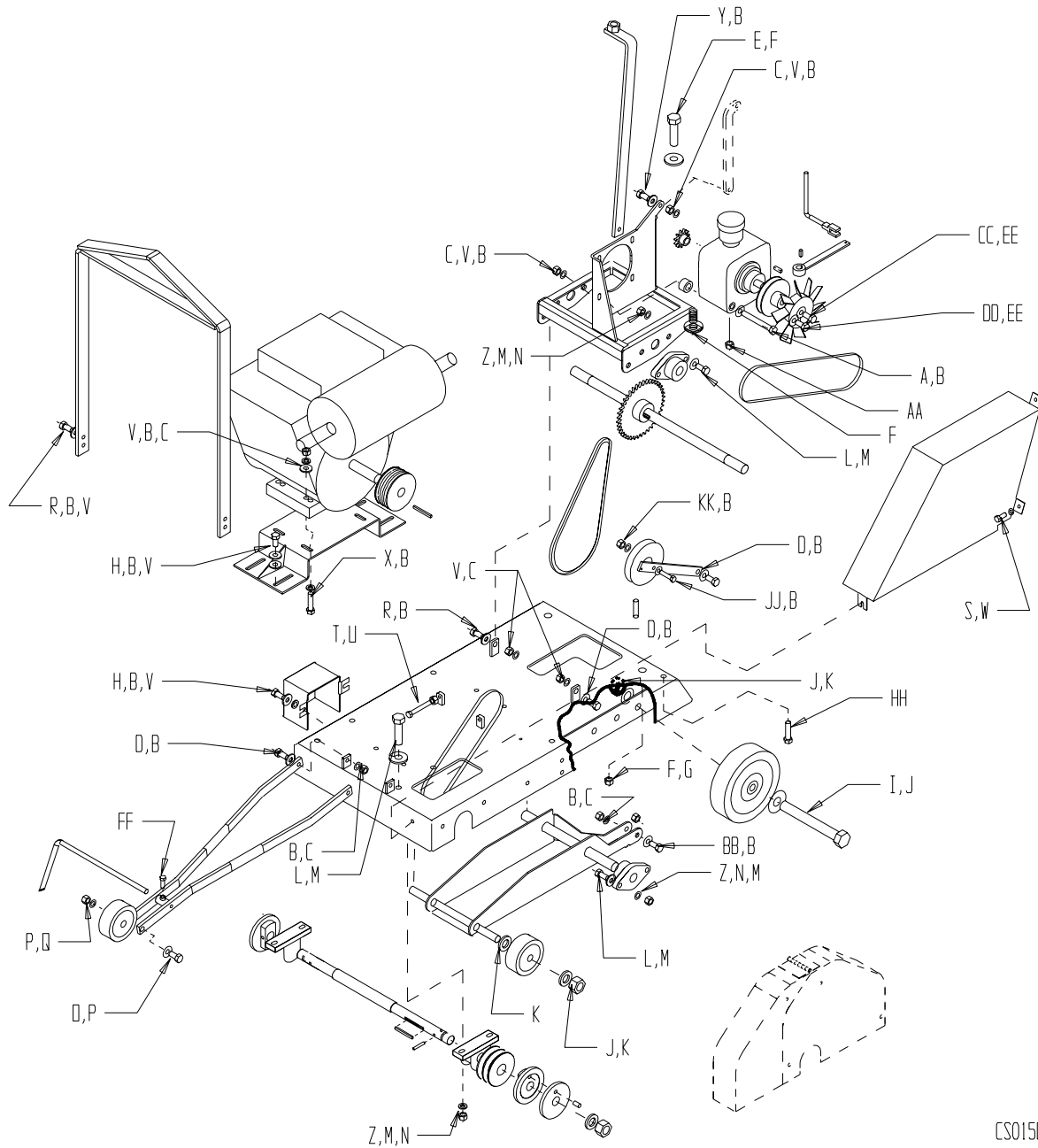
CSP3 Base Assembly

Item	Part No.	Description	Qty.
33	43480-2	Shaft Guard	1
34	43385-2	Motor Deck Weld (13 Honda)	1
34a	43447-2	Motor Deck Weld (16 B&S, 18/20 Honda)	1
35	43450-2	Lift Bale Weld	1
36	39103	Sheave, Engine (13 Honda, 16 B&S)	1
36a	39102	Sheave, Engine (18/20 Honda)	1
36b	39210	Sheave, Engine (20" Guard, Honda)	1
36c	39211	Sheave, Engine (20" Guard, HP B&S)	1
37	39131	Engine, 13hp Honda	1
37a	39134	Engine, 16hp B&S	1
37b	39129	Engine, 18hp Honda	1
37c	37114	Engine, 20hp Honda	1
38	39109	Chain RC40	2.5ft
39	39111	Link, Connecting No.40	1
40	43413-2	Transmission Brkt Weld	1
41	80717	Key Square, Engine	1
42	43388-2	Spacer, Tilt Arm	2
43	43445-2	Tilt Adjust Weldment	1
44	39108	Sprocket, 40b11, .670 Bore	1
45	39100	Pump, Transmission, Model 6	1
46	80100	Key Square 1/4 X 1, Class 1	1
47	80774	Key Woodruff .404 Hard	3
48	39524	Bumper, Pointer	2
49	39193	Exhaust (13 Honda)	1
49a	39138	Exhaust (18 Honda)	1
49b	37115	Exhaust (20 Honda)	1
50^	39140	Plumbing Kit	1
51^	38856	Fuel Filter (18/20 Honda)	1
52^	43315-2	Spacer, Transmission (13 Honda)	4
53^	39191	Rubber Bumper	3
54^	43310	Wire Harness (13 Honda)	1
54a^	43395	Wire Harness (16 Honda)	1
54b^	43394	Wire Harness (18 Honda)	1
54c^	37110	Wire Harness (20 Honda)	1

Remarks: ^NOT SHOWN

PARTS LIST

CSP3 Base Assembly



CS0150

PARTS LIST

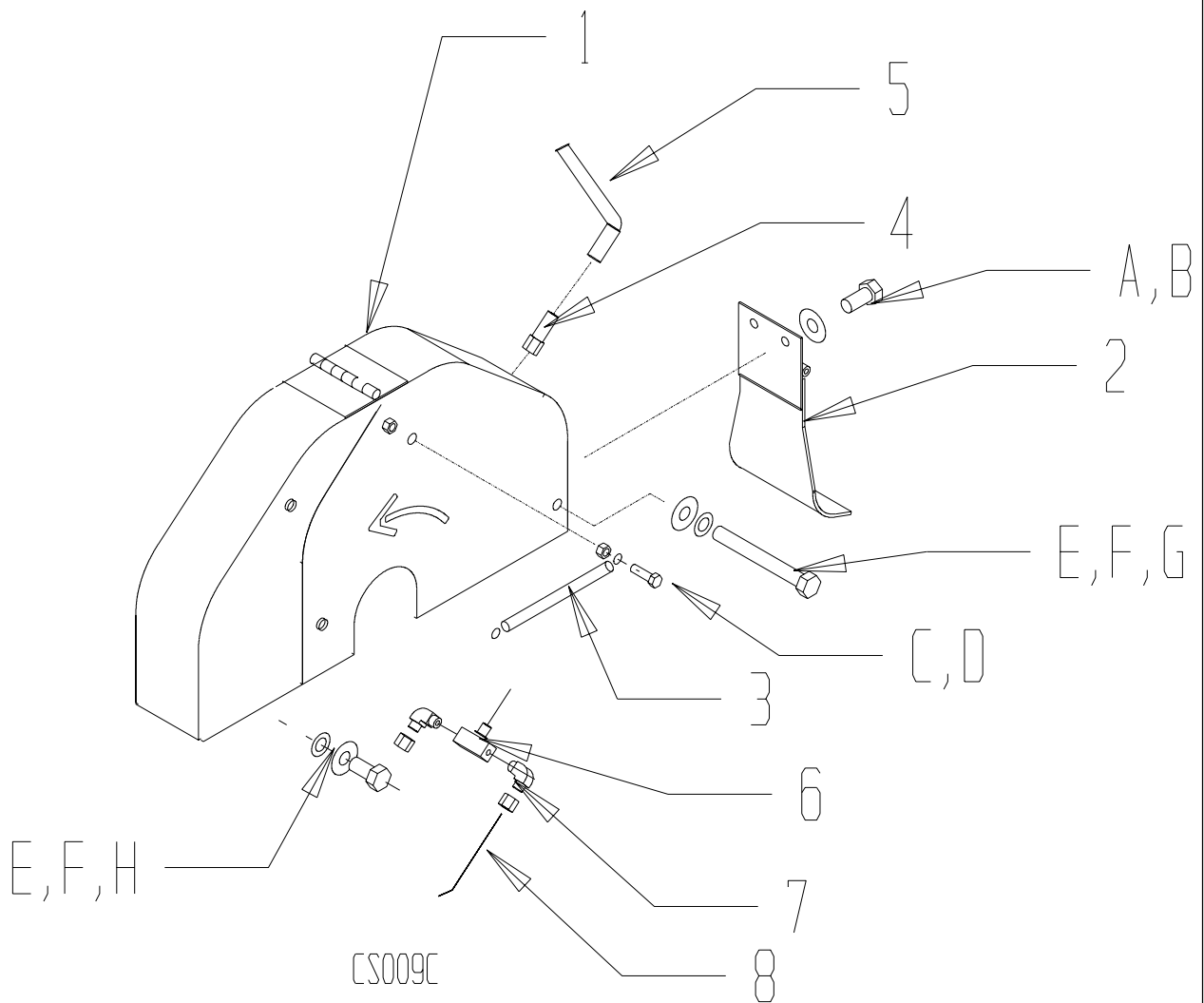
CSP3 Base Assembly

Item	Part No.	Description	Qty.
A	80840	HHCS M10-1.5 x 80 (EXCEPT 13H)	4
A1	80842	HHCS M10-1.5 x 100 (13H)	4
B	80806	WASHER M10 x 20 FLAT	34
B1	80812	WASHER M8 x 14.8 FLAT	4
C	80833	NUT M10-1.5 NYLOK	12
D	80837	HHCS M10-1.5 x 40	4
E	80845	HHCS M16-2 x 160	2
F	80858	WASHER M16 x 30 FLAT	4
G	80852	NUT M16-2 NYLOK	2
H	80618	HHCS M10-1.5 x 25	8
I	80767	HHCS 3/4-10 x 7-1/2IN	2
J	80344	WASHER 3/4 FLAT	8
K	80769	NUT 3/4-10 NYLOK	4
L	80844	HHCS M12-1.75 x 50	12
M	80807	WASHER M12 x 24	24
N	80830	NUT M12-1.75 NYLOK	12
O	80196	HHCS 1/2-13 x 3-1/2IN	1
P	80343	WASHER 1/2 FLAT	2
Q	80051	NUT 1/2-13 NYLOK	1
R	80815	HHCS M10-1.5 x 30	6
S	80406	HHCS M8-1.25 x 20	3
T	80841	HHCS M10-1.5 x 90	2
U	80866	NUTFX M10-1.5	2
V	80804	WASHER M10 x 18., LOCK	18
W	80812	WASHER M8 x 14.8 FLAT	3
X	80838	HHCS M10-1.5 x 50 (13/16/20H)	4
X1	80883	HHCS M8-1.25 x 50 (16B&S)	4
Y	80849	SHSHB M8-1.24 x 20	1
Z	80805	WASHER M12 x 20 FLAT	12
AA	80056	NUT 3/8-16 NYLOK	1
BB	80839	HHCS M10-1.5 x 70	1
CC	80722	HHCS 1/4-20 x 1/2	1
DD	80776	SHCS 1/4-28 x 1/2	4
EE	80571	WASHER 1/4 FLAT	5
FF	80893	THUMB SCREW	2
HH	80843	HHCS M12-1.75 x 30	2
JJ	80124	SHSHB 3/8-16 x 1IN	1
KK	80114	NUT 5/16-18 NYLOK	1
LL^	80315	COTTER PIN 3/16 x 2 ZN	1

Remarks: ^ Not Shown

PARTS LIST

Blade Guard Assembly



PARTS LIST

Blade Guard Assembly

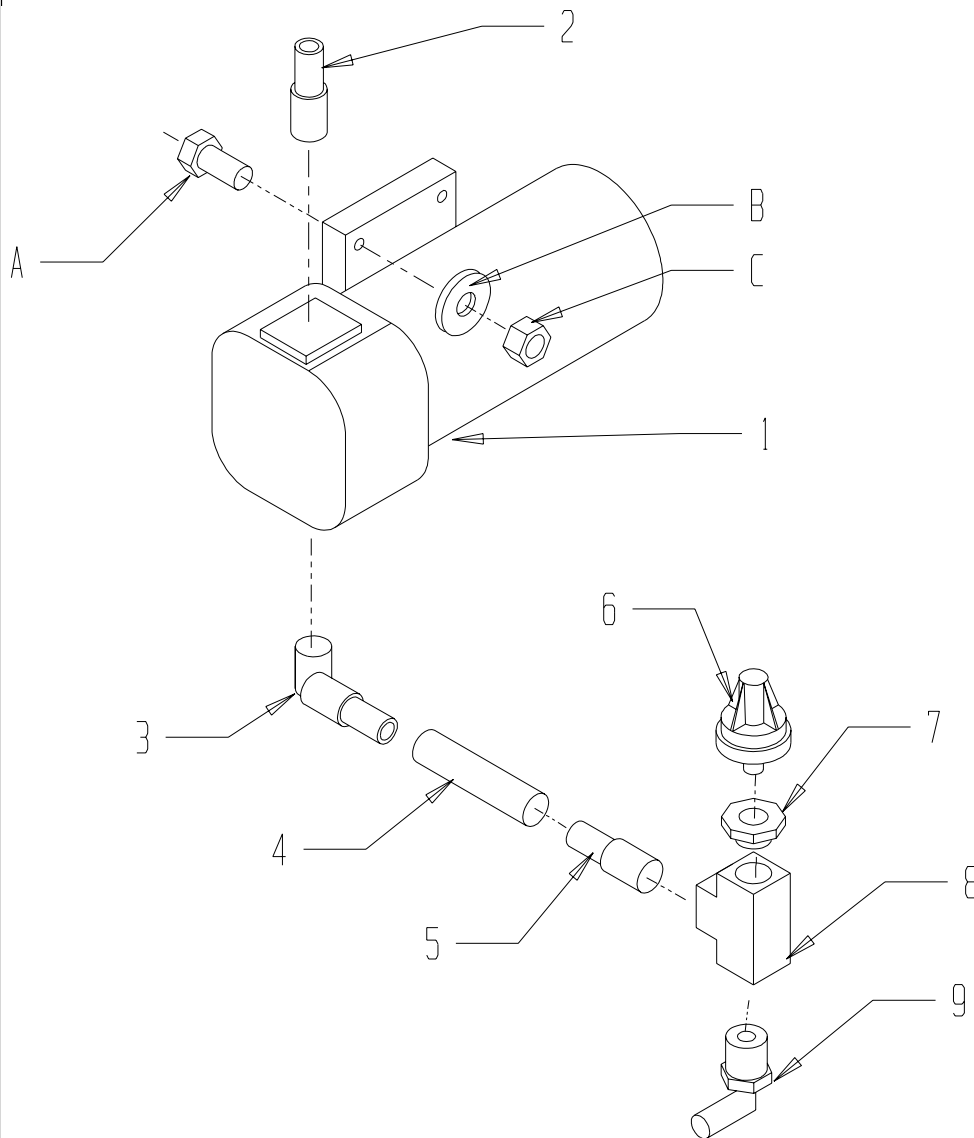
Item	Part No.	Description	Qty.
1 *	43358-2	Blade Guard Weld 14"	1
1a*	43359-2	Blade Guard Weld 16"	1
1b*	43484-2	Blade Guard Weld 18"	1
1c*	43309-2	Blade Guard Weld 20"	1
2*	43429	Splash Guard	1
3*	39110	Extension Spring	2
4*	39147	Hose Barb 1/8 x 3/8	1
5	39150	3/8 Nylon Braid Hose	4.5 SF
6*	39148	1/8 Branch Tee	1
7*	39149	1/8 90 ° Compression Fitting	2
8*	39170	Water Tubing 14" Guard	2
8a*	39171	Water Tubing 16" Guard	2
8b*	39152	Water Tubing 18/20" Guard	2
9^	23000	Kit Blade Guard 14"	1
9a^	23001	Kit Blade Guard 16"	1
9b^	23002	Kit Blade Guard 18"	1
9c^	23014	Kit Blade Guard 20" Honda	1
9d^	23027	Kit Blade Guard 20" B&S	1
10^	39191	Bumper Rubber	1
A	80812	M8 Flat Washer	2
B*	80406	HHCS M8-1.25 x 20	2
C*	80853	NUTKP M6 x 1	8
D*	80836	HHCS M6-1 x 16	4
E	80806	M10 Flat Washer	2
F	80804	M10 Split Lock Washer	2
G	80842	HHCS M10-1.5 x 100	1
H	80618	HHCS M10-1.5 x 25	1

Remarks: ^ Not Shown

* Items included in Blade Guard Kit Item 9

PARTS LIST

Water Pump Assembly



CS011A

PARTS LIST

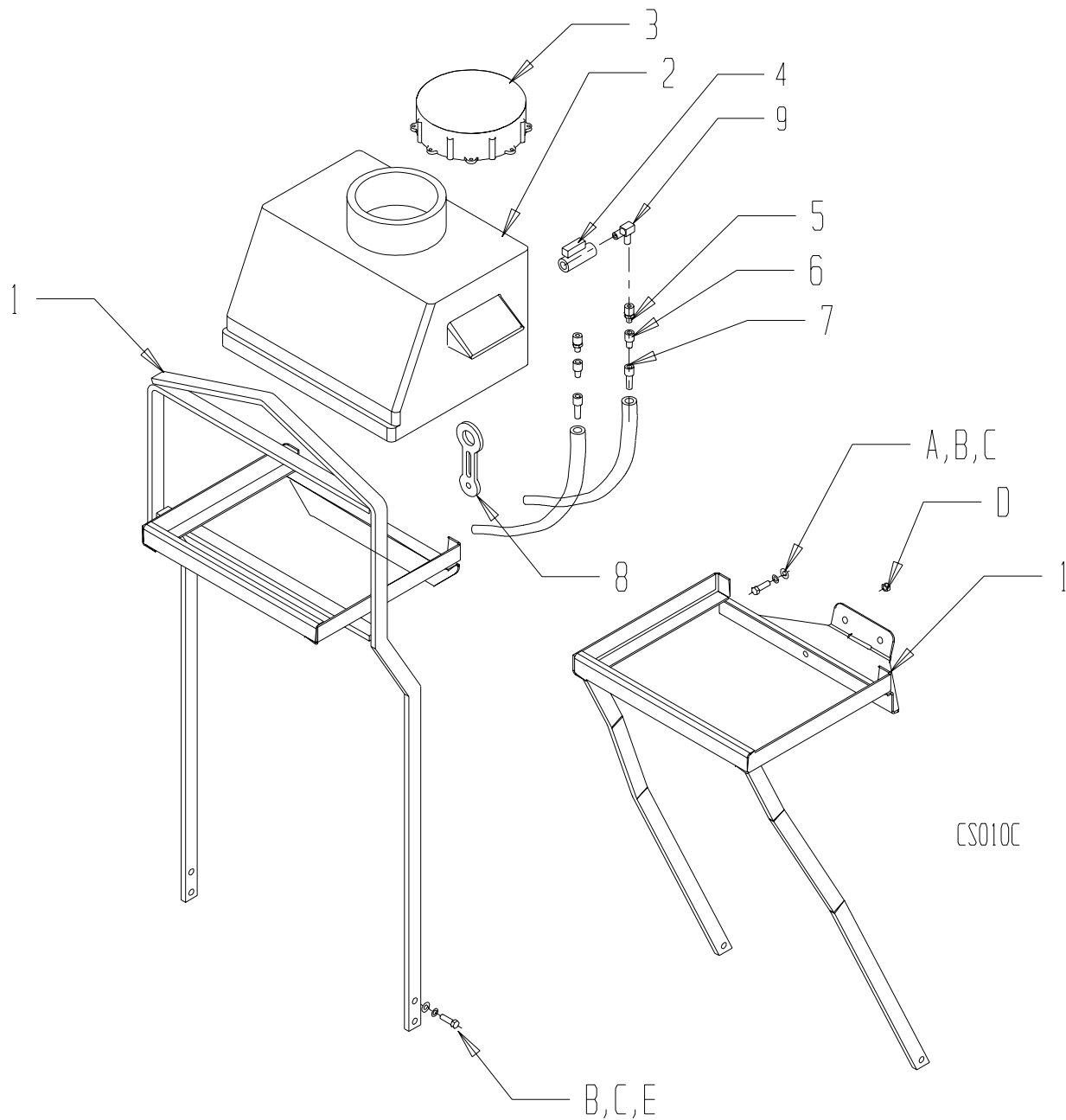
Water Pump Assembly

Item	Part No.	Description	Qty.
1	39139	Water Pump	1
2	39173	Hose Barb 1/2 EPDM	1
3	39174	Elbow 1/2 Hose EPDM	1
4	39151	Hose 1/2 Nylo Braid	1.5 FT
5	39145	Hose Barb 1/2 x 1/2 x 1/2	1
6	39126	Pressure Switch	1
7	39144	1/2 x 1/8 Reducer	1
8	39143	1/2 Brass Pipe Tee	1
9	39169	Hose Barb 1/2 x 3/8 90°	1
A	80846	BHSCS M5 x .8 x 30	4
B	80855	Washer M5	4
C	80850	NUTNY M5 x .8	4

Remarks:

PARTS LIST

Water Tank Option Assembly



CS010C

PARTS LIST

Water Tank Option Assembly

Item	Part No.	Description	Qty.
1	43303	Tank Mount Weld CS1 5/8 Gal.	1
1a	43296	Tank Mount Weld CS2 5 Gal.	1
1b	43200	Tank Mount Weld CS2 8 Gal.	1
2	47383	Water Tank 5 Gal.	1
2a	47387	Water Tank 8 Gal.	1
3	47241	Cap	1
4*	39361	Valve 1/4 NPT	1
5*	39215	Quik Connect Nipple	1
6*	39216	Quik Connect Coupler	1
7*	39217	1/8 NPT x 3/8 Hose	1
8	47182	Latch	1
9*	39360	Elbow 90° 1/4 NPT	1
10	39212	Kit Plumbing	1
11^	23016	Kit Water Tank CS1 5 Gal.	1
11a^	23017	Kit Water Tank CS2 5 Gal.	1
11b^	23043	Kit Water Tank CS1 8 Gal.	1
11c^	23044	Kit Water Tank CS2 8 Gal.	1
A	80618	HHCS M10 - 1.5 x 25	2
B	80804	M10 Lock Washer CS1 5/8 Gal.	2
B1	80804	M10 Lock Washer CS2 5/8 Gal.	4
C	80806	M10 Flat Washer	8
D	80833	M10 Nylok Nut	2
E	80837	HHCS M10 - 1.5 x 40 CS1	2

Remarks: ^ Not Shown
* Components of P/N 39212

PARTS LIST

Decal Identification

NOTICE

CONTACT THE MANUFACTURER IMMEDIATELY AT 1-800-888-9926 IF SAFETY OR HAZARD DECALS OR OWNER'S MANUAL ARE MISSING FROM THIS EQUIPMENT. P/N 55156

CAUTION

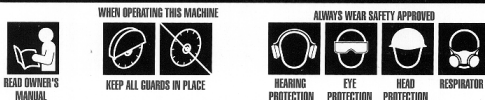
When equipment is not in use turn the fuel valve to the OFF position

55269

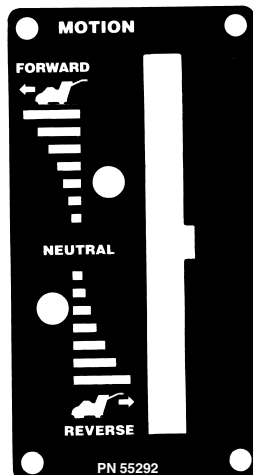
55285



CAUTION



FAILURE TO COMPLY COULD RESULT IN SERIOUS BODILY INJURY.



55286

BEFORE STARTING ENGINE

1. Use correct blade for cutting conditions.
2. Ensure arbors and collars are clean and undamaged.
3. Mount blade and tighten securely using both wrenches.
4. When wet cutting, check water jets for adequate flow.

TO START SAWING

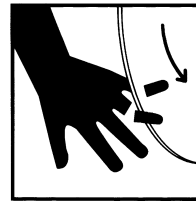
1. Start engine and let engine warm up. All sawing is done at full throttle.
2. Align blade and saw with cut. If wet sawing, open water valve.
3. Lower blade to touch surface and re-zero depth gauge.
4. Lower blade into cut slowly.
5. Cut as fast as blade will allow. If blade climbs out of cut, reduce forward speed or depth of cut.
6. Use only enough side pressure on saw handles to follow cutting line.

PN 55287

CAUTION

DO NOT LIFT GUARD WHEN ENGINE IS RUNNING

FAILURE TO COMPLY COULD RESULT IN SERIOUS BODILY INJURY



PN 55289

CAUTION

MOVING PARTS



KEEP HANDS FEET AND LOOSE CLOTHING CLEAR

HOT SURFACES



MUFFLER, ENGINE, AND ENGINE SHROUD MAY BE HOT

SHOCK HAZARD



BE SURE THAT ELECTRICAL EQUIPMENT IS PROPERLY GROUNDED

FAILURE TO COMPLY COULD RESULT IN SERIOUS BODILY INJURY



USE GASOLINE ONLY



CAUTION



**NO SMOKING
NO FLAME**



FUEL AND VAPORS ARE COMBUSTIBLE



PN 55290

55288



DANGER

DO NOT OPERATE GASOLINE POWERED EQUIPMENT WITHOUT ADEQUATE VENTILATION

CARBON MONOXIDE IS AN INVISIBLE, ODORLESS GAS THAT CAN KILL.



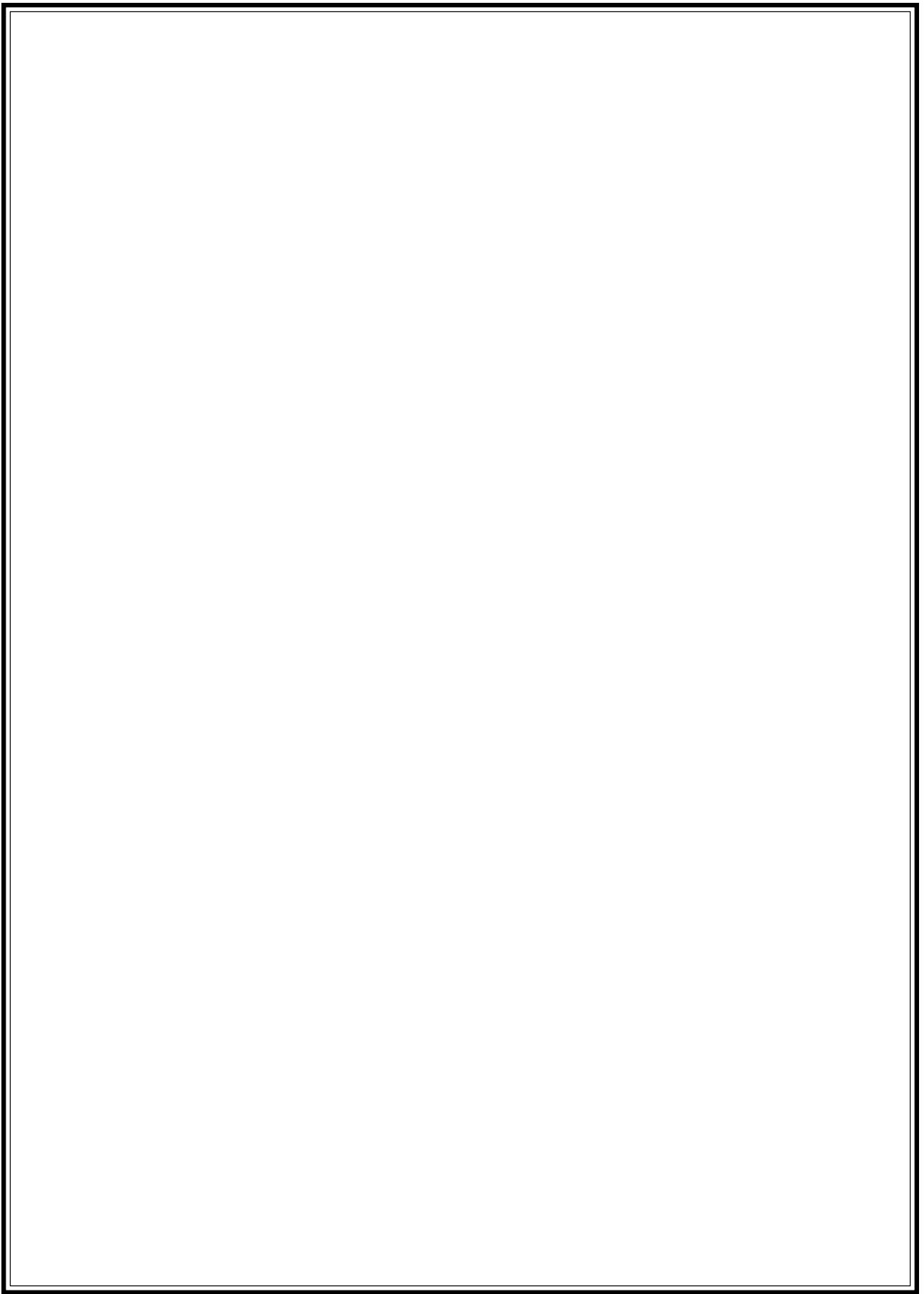
PARTS LIST

Decal Identification

Item	Part No.	Description	Qty.
1	55156	Decal Notice	1
2	55260	Decal Fuel Off	1
3	55285	Decal Caution Saw Icon	1
4	55286	Decal Before Starting	1
5	55287	Decal Caution Lift Guard	1
6	55288	Decal Danger Carbon Monoxide	1
7	55289	Decal Caution Moving Parts	1
8	55290	Decal Caution No Smoking	1
9	55291	Decal Caution Spark Plug	1
10	55292	Decal Motion F/N/R	1
^	23258	Kit Decals Warning CS1 (Includes Items 1, 3-9, 55279, 55282)	1
^	23259	Kit Decals Warning Gas CS2 (Incl 1, 5, 7-9, 55269, 55280, 55282)	1
^	23274	Kit Decals Warning Elec CS2 (Includes Items 1, 5, 7, 55280, 55282)	1
^	23260	Kit Decals Warning CSP3 (Incl 1, 5, 7-10, 55269, 55281, 55283)	1

Remarks: ^ Not Shown







CALIFORNIA PROPOSITION 65 WARNING:
Operation of this equipment and/or engine
exhaust from this product contains chemicals
known to the State of California to cause cancer,
birth defects, or other reproductive harm.



Stone Construction Equipment, Inc.
P.O. Box 150, Honeoye, New York 14471
Phone: (800) 888-9926
Fax: 716-229-2363
e-mail: sceny@stone-equip.com
[www: stone-equip.com](http://www.stone-equip.com)

A 100% employee-owned American manufacturer

© 1998 Stone Construction Equipment, Inc.
Printed in U.S.A.