

**Accomplish Quilting, Inc.**

AUTHORIZED DEALER

*Statler Stitcher* *Gammill*  
QUILTING SYSTEMS

# Longarm Quilting Machine Catalog

*Making it easy to bring your creative dreams to life*

[www.accomplishquilting.com](http://www.accomplishquilting.com)







## Accomplish Quilting, Inc.

2797 Kimmel Street  
Stevensville, MI 49127  
phone 269.556.2552  
fax 269.556.0406  
toll free 866.556.2552  
www.accomplishquilting.com

*At Accomplish  
Quilting  
everyone quilts.  
See page 14  
for details.*



**B**ringing your creative dreams to life is our specialty. We stock quilting machines to fit every budget, for you to have fun, to improve your quilting business or even to start your own business. From the initial set up and delivery – anywhere in the U.S. or Canada, to trained technicians, to support your machine for the life of ownership, we are here to help you achieve your creative dreams.

We bring expert longarm teachers to our quilting showroom and we send a trained professional right to your studio.

Our location is the only longarm machine gallery in a gorgeous tourist area. Visit us with your swimsuit, golf clubs or hiking shoes because we are nestled into lush forests, towering sand dunes and fresh water lakes. We carry longarm accessories at very competitive prices. Join our list of satisfied customers by selecting the best machine for you. And don't worry if you outgrow your machine at some point. We have a comprehensive trade-in policy to suit your every need.

*Quilts on cover page created by Denise Cawley, Tammy Finkler, Penny Sempert and Cindy Beaudry. Quilts on pages 3, 7, 9 created by Loretta Benedict; the quilt on page 5 by Penny Sempert; page 7 Denise Cawley; and page 10 Linda Thielholdt.*



Gammill Classic Plus display panel



Stitch Regulated Classic Plus™ attached to work station with Design Center (inset)



*Come visit our showroom in this beautiful tourist area*



**Deluxe Line Machine pictured above is an example of our best selling model — the Gammill Classic Plus. (See pages 6 and 7 for more Deluxe Line Machines.)**

95% of our customers purchase stitch regulated machines – called “Plus” machines or Statler Stitchers. Those stitch regulated machines assure even stitches. While all the machines can be purchased without stitch regulation very few customers buy them because they take longer to learn to use. Most quilting machines featured in this catalog come with features our customers recommend. Stitch regulated machines let you concentrate on your sewing and making a

beautiful pattern rather than worrying about your speed controlling the stitch length. If you are interested in fewer features – just let us know and we will get you the machine you are looking for. We also sell used machines and sometimes we have our competitors machines for sale because they were traded in for a Gammill. Let our staff know what your quilting machine dreams are and we will help you find the right machine for your needs and budget.

Statler Stitchers are Gammill’s equivalent to a Harley Davidson motor cycle, or a Mercedes-Benz. They are our top of the line machines with every bell and whistle included. Unlike a Harley or Mercedes, where you provide the driver, Statler Stitchers do the sewing for you. No – we are not kidding. Using the computer and software included with the Statler, you tell it what patterns you want and where and it does the rest. You can prepare dinner, wait on a customer or piece a quilt while it quilts a fine design.





# Entry Level Introductory Quilting Machines

**T**he Homcraft and Premier machines are aimed at the person who likes to do it himself or herself. You want to piece the quilt and quilt the layers too. A small segment of customers also use these machines to make money quilting for others, the majority of customers pick these machines to add a whole new dimension to their quilting hobby. Priced similarly to embroidery machines they are often given as retirement presents, or some choose them as a gift to themselves. Another pleasant aspect to the Premier and Homcraft machines is that they fit easily and compactly into a spare bedroom or smaller space.

*At Accomplish Quilting all of our staff quilt. Even our technicians quilt. When you call us about a sewing question every staff member will have firsthand knowledge of what you are talking about.*

## Homcraft or Premier model options

Available as options for Homcraft or Premier models with wooden stand:

Straight Edge Kit (Gam-Guide, Gam-Guide Jr., Extended Throat Plate)

Casters (6)

Zippered Leaders

Horizontal Small Spool Holder (Premier only)

*(Note: We do not offer a circle-making device for this stand.) See page 12-13 for accessories available on metal stands for the Premier.*

## Homcraft Model



*Gammill's Homcraft Short-arm Quilting Machine*

## Homcraft Model

*(throat space = 11-in x 5.5-in)*

Includes • Modified Industrial Head • 12-ft Wooden Stand • Motorized Bobbin Winder • Accessories\*

Options:

- Stylaser
- Front Handle Bars

Also available as a kit:

**Homcraft Model Kit** (without wood pieces for the stand. You can build it yourself adding your own lumber)

Includes • Modified Industrial Head and Component Kit • Motorized Bobbin Winder • Accessories\*



## Premier Plus



*Training upon delivery and at our studio showroom comes with every machine.*

## Premier 18-8

*complete with 10-ft or 12-ft wooden stand*

Gammill's time-tested Premier 18-8 model (throat space 18-in depth by 8-in height) is now available on a value-priced, heavy-duty, wood and steel stand!



*Premier 18-8 complete with wooden stand.*

- Cast aluminum machine head built to industrial standards — for a lifetime of use.
- Portable stylaser, built-on bobbin winder, double-capacity bobbin — all standard!
- Stand available in 10-ft and 12-ft lengths (Custom lengths available.)
- Steel stand legs
- All steel fabric handling rollers: 1-5/8 inch diameter
- Rollers advance easily by hand
- Pine frame with attractive light stain
- White linoleum tabletop
- Price includes five Norma Sharp patterns
- 4-year warranty

## Premier Models:

Like every machine we sell, the price is determined by the features you add.

### Premier 18-8

(with functional enhancements Electronic Needle Positioner & Horizontal Channel Lock)  
on 10-ft or 12-ft stand:

**Premier Plus** (stitch-regulated)  
on 10-ft or 12-ft wooden stand or  
on 12-ft or 14-ft industrial steel stand:

### Added Features of Plus Machine Include

- Horizontal channel lock
- Electronic needle positioner
- Security/Basting stitch
- Low bobbin sensor
- Runtime clock
- Variable stitch length settings
- Thread break sensor

*(Note: Vertical Channel Lock is not available on wood/steel stand.)*



## Deluxe Line Quilting Machines

**T**he only difference between the four Deluxe Line quilting machines (Premier, Classic, Optimum and Supreme) is the size of the throat space. Larger machines are better equipped to quilt larger quilts and bedspreads or those quilts with thicker batting.

95% of Accomplish Quilting's customers who purchase hand-guided quilting machines, order stitch-regulated versions of each of these models indicated by the "Plus" in their title — Premier Plus™, Classic Plus™, Optimum Plus™ and Supreme Plus™. Stitch-regulated machines give the operator consistent stitch length regardless of whether the machine is moved at different speeds. If you are interested in a non-regulated machine where you control your stitch length based on how consistently you move, we would be happy to accommodate you. Non-stitch regulated machines are priced less than the "Plus" models.

### Industrial Steel Frame Features

- Pivotal Access allows you to make sure your batting and backing fabrics are perfectly smooth – even with the fussiest batting. Our competitors will tell you this isn't necessary but just talk to a seasoned quilter who has to fuss with a batting that clings in all the wrong places.
- The roller system and quilting surface is designed for unobstructed use of GAM Guides and Plastic Templates
- Unique ergonomic design exclusive to Gammill, see page 15 for details

### Gammill Quilting System "Plus" Features

- Dual control longarm sewing head with Regulated Stitch
- Industrial Sewing Machine Head Features
- Two Station Needle Positioner
- Horizontal and Vertical Channel Locks
- Security/Basting Stitch
- "Stop Sew" Sensor
- Run Time Clock
- Low Bobbin Alert
- "Stylaser" laser light, with top and bottom laser mounts
- Double Capacity Bobbin
- Built-on-bobbin winder
- Horizontal Small Spool Holder
- 4-year labor/4-year Parts Limited Warranty = the best warranty in the industry!

- Heavy Duty ALL Steel Frame with Powder coated finish for lasting protection
- Revolutionary new one-step elevation system for adjusting the fabric pick-up roller as you quilt
- Adjustable Height Stand Capabilities – (Manual and Electric Optional)
- "Sit or stand" frame gives you the choice to quilt in any position you like
- Batting storage underneath machine – can also be used to continuously feed batting into your quilt keeping it off the floor.
- 12' or 14' length stand – your choice.





## Gammill Classic Plus

Our Most Popular Machine  
(throat space = 26-in x 10-in)

## Gammill Optimum Plus

Great for taller quilters  
and those expecting to do  
comforters and bedspreads  
(throat space = 30-in x 12-in)

## Gammill Supreme Plus

Our largest Quilting Machine  
often selected by custom bed-  
spread manufacturers  
(throat space = 36-in x 14-in)

## Gammill Premier Plus

Available on a heavy-duty  
10-ft or 12-ft wood or a  
12-ft or 14-ft steel stand, see  
page 5 for more info  
(throat space = 18-in x 8-in)

Gammill offers Deluxe Line  
customers a limited edition  
package for additional  
savings see page 11 and  
price inserts for details.

Each Deluxe Line Machine  
includes:

- Plexiglas pieces/stencil kit for making block patterns
- Gam Guide + Gam-Guide Jr. rulers making diagonal straight lines easy on all your stitch in the ditch and cross-hatching designs.
- Extended Throat Plate – to make your rulers lay flat increasing accuracy
- Work Station for creating circles, ovals, squares, and more
- Linda Taylor's 2-hour step-by-step training video
- Three Linda Taylor roll patterns
- Six-bobbins
- Clamps for quilt layers
- 10-needles
- Oil dispenser
- Allen wrenches
- Service Manual
- Timing tool
- Pearl Headed Pins



*Pivotal Access: While operating the Gammill from the free-style side, lining and top fabric rollers are arranged so the operator has maximum use of his or her arm reach for controlling the machine and also using the Gam-Guide bars. However, if narrow strips of batting are being used, these rollers may be pivoted for convenience in adding pieces of batting. Equally important, this pivoting feature allows easy access for adding extra batting for trapunto quilting. Some of our competitors say that pivotal access isn't a necessary feature – but talk to any quilter who has dealt with a fussy batting and they will tell you how much of a convenience pivotal access is.*



# Statler Stitcher Quilting Machines

**S**tatler Stitchers offer you every single option that a hand guided machine offers but they also will do all the sewing for you. They will calculate how many patterns it takes to fill up a border, resize block patterns, sew each one with perfect stitch regulation and then tie the thread off when they are done.

Want perfect feathers on your next quilt? No problem, the Statler will stitch it for you.

## **How does it work?**

Belts that are attached to the machine use several motors to guide the sewing machine head across the quilt. Your Statler will automatically figure out how many times a pattern needs to be duplicated to stitch across a whole quilt. It will know where to start a row or block and where to tie off at the end. Once you measure your area to be quilted, you can have the computer calculate how many times a pattern has to be repeated in order to fill the space. That way you don't have to be a math whiz.

## **Will I still be able to quilt freehand with a Statler?**

Yes, of course. When you switch between computer aided (where the machine sews for you), to freehand sewing (where you guide the machine), it takes less than half a minute to disconnect, or reconnect, the belts that the computer uses to drive the machine. This way you can keep your momentum in the quilting, creating your one of a kind look.



**Statler Stitcher**

## **Is a Statler Stitcher better for my body ergonomics and long-term health?**

Not only will giving your back, legs and arms a break, because you are not standing or sitting in front of your longarm machine guiding every stitch, instead you will be off doing something else. While your Statler stitches, you can be waiting on a customer, making dinner or piecing another quilt. Furthermore, the machine will actually record your freehand sewing movements and create a custom stitch pattern that can be re-sewn any size you'd like. That way your quilting doesn't have to look like a machine sewed it. This will also save your muscles from getting tired. You can stitch a shape once, have the machine record it, and away the Statler will go sewing an exact copy of your stitches.

## **Do I need to be a computer geek and a perfect quilter to operate a Statler Stitcher?**

You'll always have help. Whether in the form of the searchable digital manual, the onscreen video tutorial, or our technicians phone numbers you will never be alone in your





*Friends and customers will watch in awe as your Statler sews all by itself.*

learning process. Prior to or after taking delivery of your machine we provide hands on training. In addition Accomplish Quilting offers Statler training in your location plus two days more in our studio. Accomplish Quilting has trained more people to use a Statler Stitcher than any one else. Put our experience to work for you. Not only have we been training longer, we have been using Statler Stitchers longer too.

### ***Why should I buy a Statler Stitcher from Accomplish Quilting?***

Accomplish Quilting has been a leader in Statler Stitcher sales since we started selling Gammills more than five years ago. We offer more extensive Statler training – both at our showroom and at your studio than any other dealer. Plus, every single employee at our dealership quilts. Not just the

teachers, but the owners, technicians and even the people answering the phone. With Accomplish Quilting everyone really cares about your quilting issues, has faced them and has a determined resolve to help you succeed and be your best.

### ***What comes with a Statler?***

New Gammill with Statler Stitcher™ System Installed includes:

- New Dell Computer
- Servo System
- AutoSketch
- Statler Stitcher™ Software
- Motors
- Pulleys
- Belts
- Hardware
- 12 or 14 foot stand
- Over 400 electronic patterns
- Industrial stand, see page 6

**Statler Gammill Classic**  
(throat space = 26 x 10 inches)

**Statler Gammill Optimum**  
(throat space = 30 x 12 inches)

**Statler Gammill Supreme**  
(throat space = 36 x 14 inches)

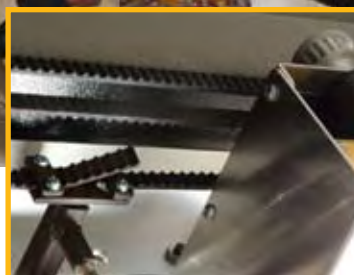
*Most Gammill Quilting System Features listed on page 6 are a part of Statler Stitcher packages too.*





*Statler Stitches make great additions to your home studio or to your quilt shop.*

*Statler Stitches use the included computer software and Servo-motors to move the belts attached to the industrial frame, guiding the sewing machine head across your quilt.*



*Belts easily disconnect from your Statler to hand guide from the front or back of the machine.*





### STATLER STITCHER OPTIONS:

- Mounting Kit for Monitor, Keyboard, Mouse
- Sweet Dreams Pattern Collection by Kim Diamond contains over 1000 patterns
- The Designer Collection 2007 by Kim Diamond with over 900 patterns



*Loretta Benedict quilted this butterfly border on her Statler Stitcher.*



*Accomplish Quilting staff quilted this to show off how perfectly Statler Stitcher's can repeat patterns*

### EXCLUSIVE PACKAGES

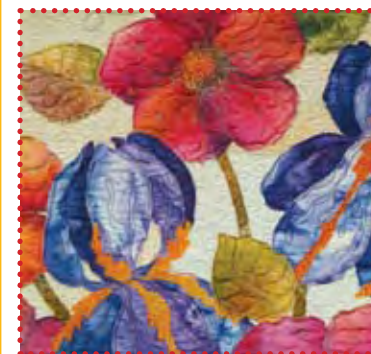
Gammill and Accomplish Quilting offer our customers **limited edition** and **preferred packages**. These packages offer significant savings on our most popular options. See price insert for details. Packages often include items like Hydraulic Height Adjustment, Overhead Light Bar, Zipper Leaders, Mounting Kit for Monitor, Keyboard and Mouse, Sweet Dreams Pattern Collection By Kim Diamond.

### *What if I already have a longarm machine and I want to add a Statler Stitcher?*

We can do that for you. Whether your machine is a Gammill or another brand, the industry leader in computer guided machines can be retrofitted to your longarm quilting machine.

- We offer on-site or factory retro-fitting to make your longarm a Statler Stitcher. Ask us how.

Like all Statler Stitchers, you will receive a New Dell Computer, Servo System, AutoSketch, Statler Stitcher™ Software, Motors, pulleys, belts, and hardware with your retrofitted Statler.



*Cindy Beaudry one of Accomplish Quilting's customers won Rookie of the Year at MQS 2005, quilting this on a Gammill Classic.*



Loretta Benedict quilted these on her Statler Stitcher to show how the Statler resizes images for you.

## Packages of supplies and accessories to make your life easier

Accomplish Quilting has polled our customers to ask them what the most important accessories are for a long arm quilter. We have arranged these products into four packages ideal for the new Gammill owner. You as an Accomplish Quilting customer are invited to save by purchasing these items in groups. Some of our customers have opted to buy each package as they each highlight a different interest in quilting. From our **Basics Collection** for those who need parts and a few supplies to get going, to our **Designer** and **Artisans** packages for those of you looking to expand, Accomplish Quilting is offering you these specials. Each one is **value priced** to save you 15% to 60% off of the retail prices. Let your dreams come true with these great supply collections exclusive to Accomplish Quilting.

### Artisans Start-Up Supply Package

- Matilda's Own Australian Premium Wool Batting, Natural Color 6 Queen Size Packages
- Matilda's Own Australian Premium Wool Batting, Natural Color 6-Crib Size Packages
- Glow-In-Dark Pencils, 2
- Thread, 7 Cones Superior Poly Quilter – 2000 yards
- Thread, 7 Cones Superior Rainbows – 2000 yards
- Thread, 7 Cones Superior Highlights – 2000 yards
- Trillium Design Pocket Guide to Free Hand
- L'orna Decorative Touch Wand
- 5 Packages of Swarovski Crystals
- Thread, 7 Cones Superior Bottom Line - 3000 yards
- Extenda Drive Handles



Stand Alone Bobbin Winder

### Basics Start-Up Supply Package

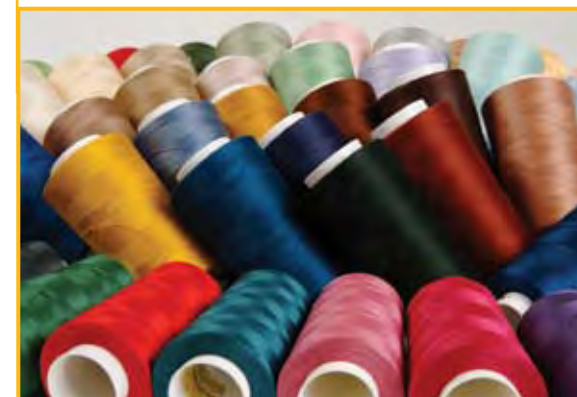
- Roll of 80 Cotton/20 Poly Blend Batting, 96" by 30yads
- Bobbins, 10
- Needles, 100
- Magnetic Pin Dish
- 200 Extra Long Quilt Pins
- Zippy Rail Cleaner
- Rick's Maintenance Library DVD
- Thread, 10-Cones 6,000 yard. Poly Asst. Colors
- Muslin, 21yard Bolt- 108" Wide, Natural or White
- Linda Taylor's *Ultimate Guide to Longarm Machine Quilting*
- Scissors and Scissors Reel
- Bobbin Case
- Sew Rite 1-Quart
- Maintenance Kit (Check Spring, Bobbin Winder Spindle Spring, 2-Switches, Anti-Backlash Spring, Needle Set Screw, Bobbin Winder O-Ring, Fuse, Bobbin Case Spring, Lint Brush)

### Cottons Start-Up Supply Package

- Roll of Batting, Hobbs 100% Cotton Organic 96" by 30 yards
- Applique Helper
- Chalk Pencils – 2
- Thread, 10 Cones of King Tut Variegated 2,000 yards
- Thread, 10 Cones of Masterpiece, Solid 3,000 yards
- Thread, 5 Cones of King Tut Solid 2,000 yards
- Sally Terry's Pathways to Better Quilting
- "My Most Requested Freehand Overalls," Diana Phillips
- Golden Threads Pattern Packet

### Designers Thread Package

A large collection of the most popular, tantalizing and delicious threads for our Gammill and Statler machines. Many customers add this package when upgrading their longarm.



Signature Thread





## More fabulous accessories for your new Statler Stitcher and/or Gammill

- **Design Center**– this toy will enhance the fun you have with your Gammill
- **Swivel Casters** for Stand Legs
- **Leaders** with Zippered Edges



Swivel Casters



Leaders with Zippered Edges



Quilter's Anti Fatigue Sponge Mat

- **Quilter's Anti Fatigue Sponge Mat**  
– 24" wide by 12' long. "Give your legs a break." Thousands of tiny air bubbles are embedded inside these mats to create a soft, comfortable cushion. Corrugated top provides traction. Beveled edge on length sides.
- **Stand Alone Bobbin Winder**
- **Deluxe Drafting Chair**
- **Alignment Mat**
- **Hydraulic Height Adjustment** – to change height of machine throughout the day for enhanced operator comfort or when changing operators

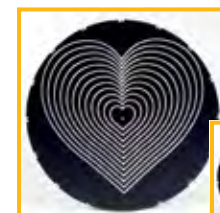


Drafting Chair



Hydraulic Height Adjustment

- **Work Station Template #1**  
– Concentric Hearts and Stars
- **Work Station Template #2**  
– Points & Scallops
- **Work Station Template #3**  
– Greek Key and Continuous Hexagon
- Accomplish Quilting **Full Spectrum Stand Lights**  
– Arched steel with double full spectrum florescent lights to ease eyestrain.



Work Station Template #1 Concentric Hearts and Stars



Work Station Template #2 Points & Scallops



Work Station Template #3 Greek Key and Continuous Hexagon



Full Spectrum Stand Lights



Select Designer Colors, Pink Red, Purple, and more to come. See page 15 for more details.



*Sandy Metzger of East Lansing, Michigan created this quilt on her Statler Stitcher using patterns designed by Jeff Benedict, President of Accomplish Quilting*

### **Longarm Supplies**

Every longarm quilting supply you will ever need is stocked in our online web store as well as in our showroom. We carry thousands of threads, needles, patterns, batting and more as well as knowledgeable staff to help you with your selections.



### **Financing**

Ask us about financing options and specials. We also offer advice and options for business and marketing plans.

### **Delivery Day**

We have heard a lot of rumors about longarm dealers dropping your new baby off in the driveway leaving you to set it up yourself. That will never happen here at Accomplish Quilting.



### **100 Point Inspection**

Every machine that passes through our door goes through more than 100 documented points of inspection to insure the quality of every machine we sell. While every machine is checked at the factory we want to be sure that the Gammill you receive lives up to its reputation.

### **Room Size**

To learn more about the size of room needed to accommodate various longarm models please call our friendly sales staff.

### **Forever Learning**

Accomplish Quilting doesn't just offer classes to help you become efficient at running your machine but we bring award winning quilters from around the globe to our showroom so that you can expand your longarm skills for years to come. Watch our newsletter for the full lineup of Forever Learning classes available to all.



### ***Training to Make Your Creative Dreams Come True***

- Initial Training at place of delivery.  
(Three to six hours – depending on how much training you need)
- Two days intermediate level training at Accomplish Quilting's showroom



*Design Center  
stitch example*



### ***We Make Other Dreams Come True***

*At Accomplish Quilting everyone quilts. Not just our teachers, but all of our staff quilt. We also average one charity quilt a week that is donated to a community program like the Quilts of Valor program for soldiers coming back with injuries from Iraq and Afghanistan.*



## Staying close to your quilting is better for your health!

The area immediately in front of your body is what is called the 'sweet spot' amongst longarm quilters. That area is where a longarm quilter can make her best stitches because she or he is closest to their quilting – giving him or her the most control for creating fine detailed stitches. In shopping for a longarm, you may notice that many manufactures structure their machine stands so that the closest you can sew is 8-10" away from your body. The farther away the sweet spot is, the more you will have to lean over while quilting – stressing your body. Whereas Gammill

frames and machine heads allow you to sew as close as five inches from your body. The closer you are to your work, the better control you have of the machine and the better position your body will be in.

Anne Hefter, OTR (Registered Occupation Therapist), Milwaukee, Wisconsin, *"The Gammill is ergonomically created to reduce back strain, upper body muscle fatigue because the frame lets you stand close to your quilting, compared to its competitors whose stands force the quilter to be farther away from their work."*



## Limited Edition Colors for your new baby!

Many longarm quilters think of their Gammill's as a friend referring to them by name or calling them their 'baby.' In buying a new home or a car, it is fun to add features and options. One new option Gammill is offering in limited quantities are custom painted machine heads. Inquire with our staff about how you can get yours today.

*Note: Artist rendering may be slightly different than actual colors.*

## Comparison Chart

Statler Stitcher				
Deluxe Line Plus Machines				
Introductory Premier on wood & steel stand				
Introductory Homecraft (short arm machine)				
•	•	•	•	Industrial Sewing Machine Head Features
•	•	•	•	12-ft or 14-ft Length Stand – Your Choice, or Custom Length
•	•	•	•	Double Capacity Bobbin
•	•	★		Dual Control Long Arm Sewing Head with Regulated Stitch
•	•	•		Two Station Needle Positioner
•	•	•		Horizontal and Vertical Channel Locks (Only on Deluxe Line Frames)
•	•	•		Security Basting Stitch
•	•	★		"Stop Sew" Sensor
•	•	•	★	"Stylaser" Laser Light, with Top and Bottom Laser Mounts
•	•	•		Built-on-Bobbin Winder
•	•	•		Heavy Duty All Steel Frame with Powder Coated Finish for Lasting Protection
•	•	•	•	"Sit or Stand" Frame
	•	•	•	Paper Pantograph Pattern Sets
•	•	★		Horizontal Small Spool Holder
•	•	★		Gam Guide Junior and Large Gam Guide
•	•	★		Extended Throat Plate
•	•			One-Step Elevation System for Adjusting the Fabric Pick-Up Roller
•	•			Batting Storage Underneath Machine
•	•			Pivotal Access
★	★			Hydraulic Height Adjustment
★				Channel lock at any angle
	•	★		Run Time Clock
	•	★		Low Bobbin Alert
•	•	•		4-Year Labor/4-Year Parts Limited Warranty: <i>The Best Warranty in the Industry!</i>
•	•	•		Adjustable Height Stand Capabilities
•				New Dell Computer
•				Servo System
•				Autosketch Software
•				Statler Stitcher™ Software
•				Motors, Pulleys, Belts, and Hardware for the Machine to Sew by Itself
•				Over 400 Electronic Patterns
★				Design Center
	•			Work Station
	•			Plexiglass Pieces for Block Patterns
★	★	★		Alignment Mat
★	★	★		Drafting Chair
★	★	★		Overhead Light Bar
★	★	★	★	Leaders With Zippered Edges
★				Mounting Kit for Monitor, Keyboard and Mouse
★				Sweet Dreams Pattern Collection, Millennium Pattern Collection
★				Work Station Templates: Hearts, Stars, Points & Scallops, Greek Key, Hexagon

★ = optional



Denise Cawley, Pizzazz Studios, Milwaukee WI



Pieced by Penny Sempert, quilted by Diane Banks



*Make Your Dream of Owning a Gammill Come True*



**Accomplish Quilting, Inc.** 2797 Kimmel Street, Stevensville, MI 49127  
[www.accomplishquilting.com](http://www.accomplishquilting.com)