

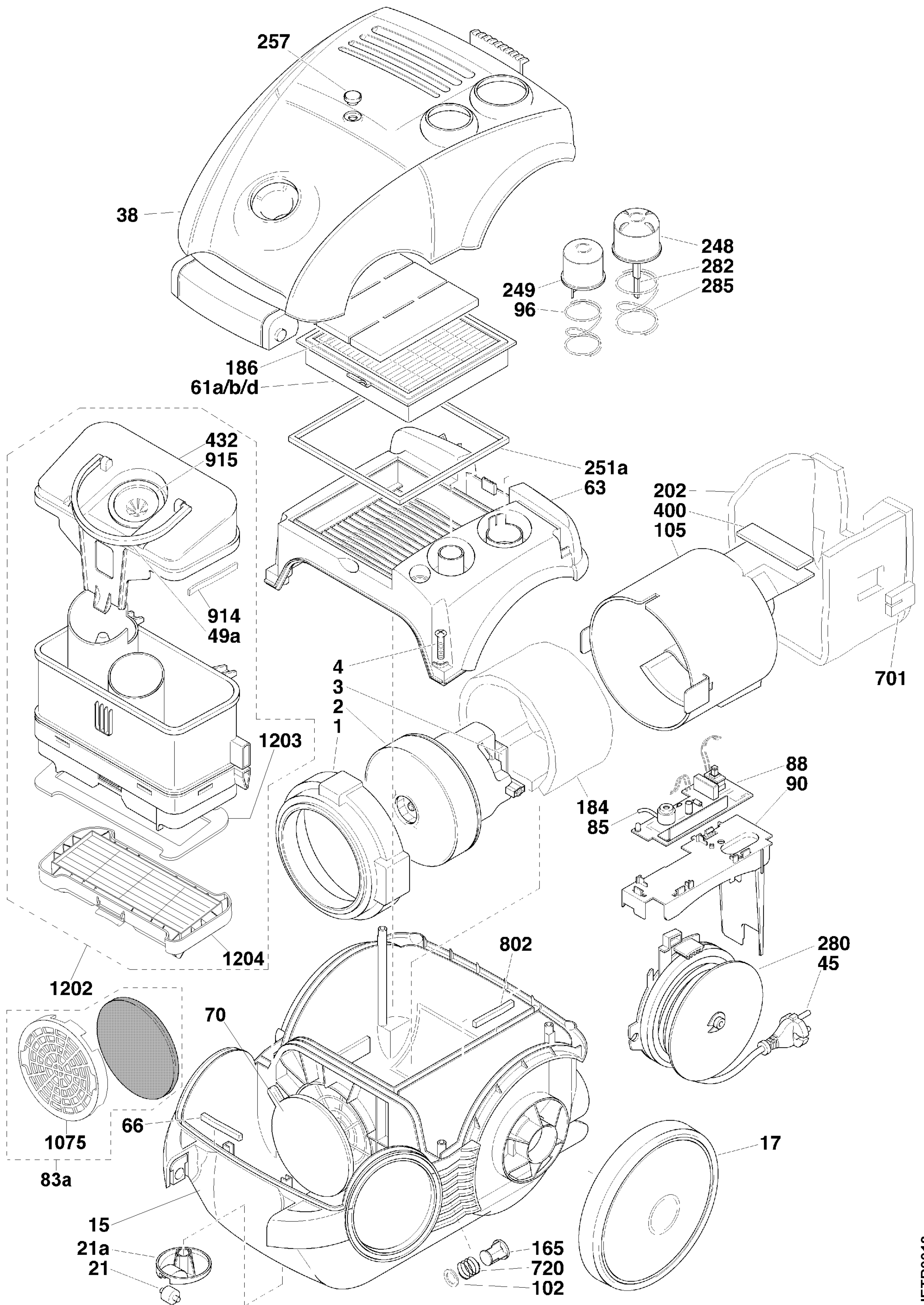


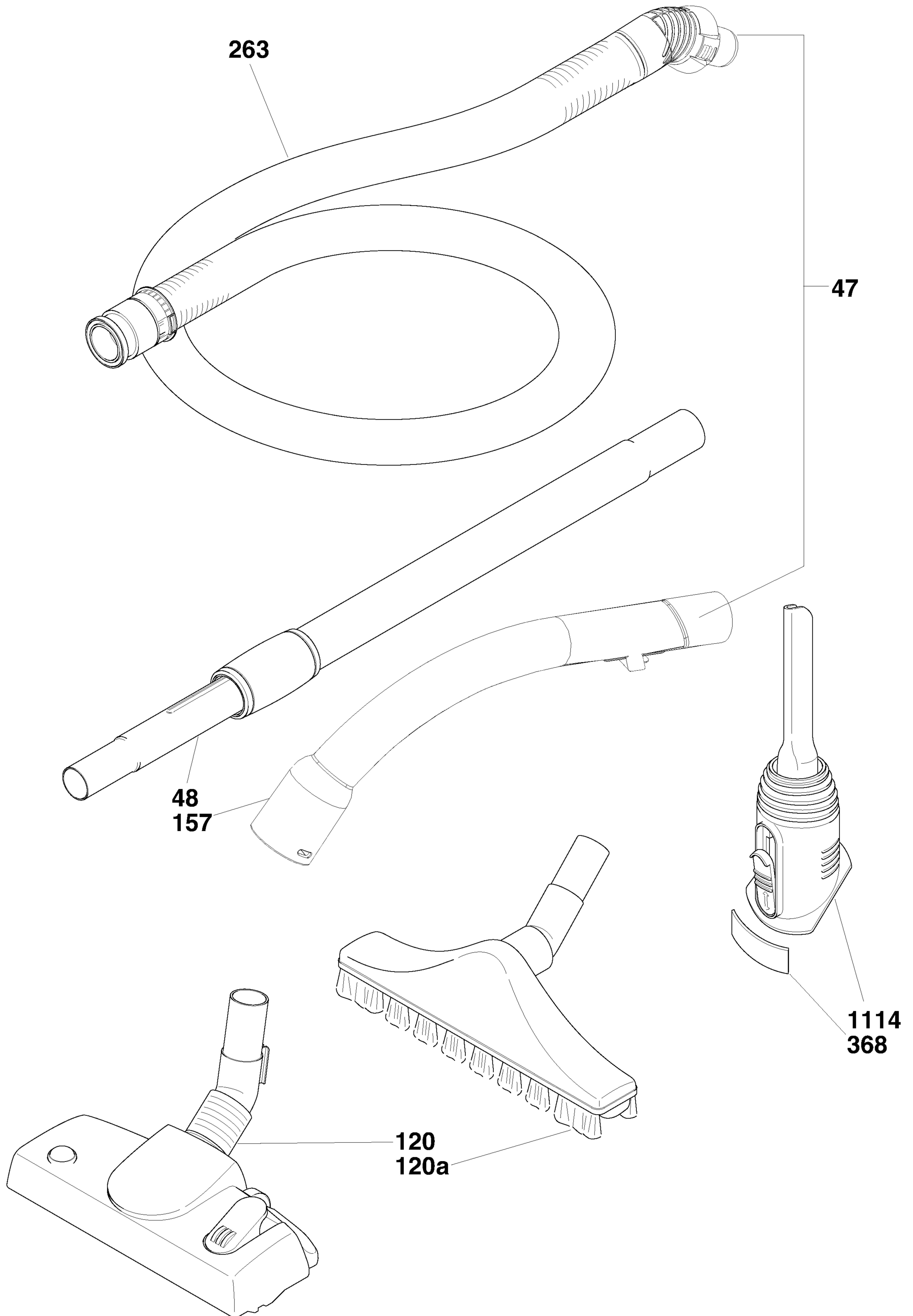
HOOVER 

CANISTERS

39000418 TC5213 001

Service Manual







39000418 TC5213 001 0648 (01/12/2006)

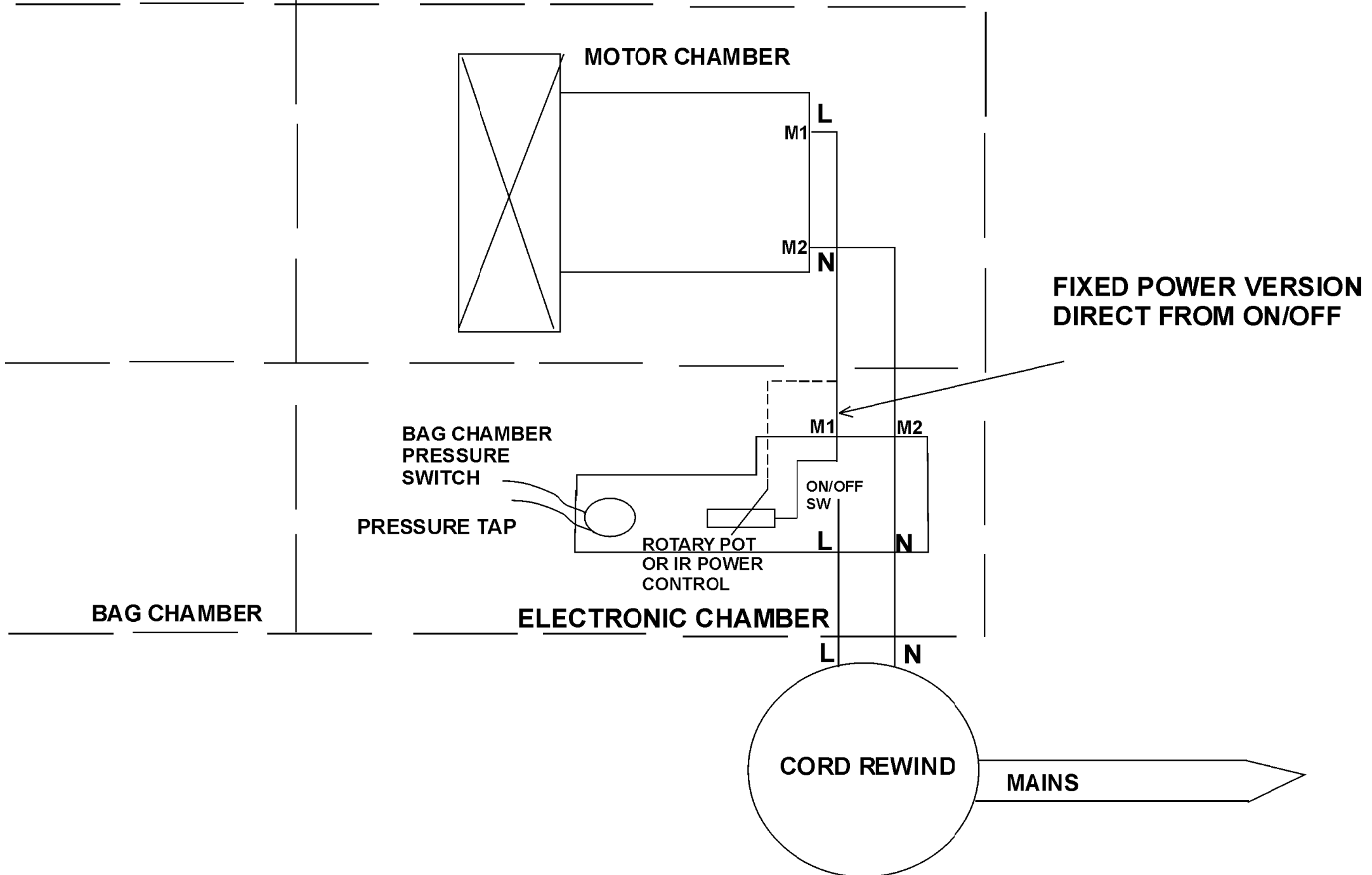
Ref.	Descrizione - Description - Beschreibung - Descripcion	Ricambio Part No. Piece E-Teil Pieza	Inizio Beginning Debut Begin Inicio	Fine Ending Fin End Fin
1	Motor mount - fan end	03875134		
2	Motor assembly	04315042		
3	Motor mount - commutator end	03875157		
4	Screw	02105005		
15	Chassis	03795062		
17	Rear wheel	03855014		
21	Castor wheel	04320016		
21a	Castor support	03695008		
38	Top cover	04225854		
45	Plug and cord assembly	04635018		
47	Hose assembly	35600361		
48	Extension tube	04345148		
49a	Cover handle	03945039		
61a	Micro filter	04365030		
63	Motor cover	03726030		
66	Bag door seal	03875063		
69	Bag full indicator	03935011		
70	Pre-motor filter	03875166		
70a	Filter kit	09205451		
71	Disposal bag	09178278		
83a	Active carbon filter	04365109		
85	Pressure switch tube	06605089		
88	Electronic module	04685084		
90	Module housing (protection)	03645010		
96	Spring	03835006		
101	Bag holder	03645055		
102	Seal	03870606		
105	Motor support	03715021		
119	Flex hose end	03865036		
120	Floor nozzle	04845090		
157	Handle tube upper (curved hose end)	04225546		



39000418 TC5213 001 0648 (01/12/2006)

Ref.	Descrizione - Description - Beschreibung - Descripcion	Ricambio Part No. Piece E-Teil Pieza	Inizio Beginning Debut Begin Inicio	Fine Ending Fin End Fin
165	Valve	04350201		
184	Noise reducer	03945048		
186	Noise reducer	03945026		
193	Cord clamp	03610367		
202	Silencer	03945049		
248	On/Off pedal	03845081		
249	Cord reel pedal	03845029		
251a	Motor housing seal	03875167		
257	Roundel (Hoover emblem)	05165002		
262a	Hose end latch	03615016		
263	Flexible hose without edges	35600360		
280	Cord reel complete	04685037		
285	Button spring	03835005		
299a	Turbo nozzle(mini)	09200356		
368	Litter picker	03955000		
400	Seal for partition	03875168		
432	Cover	03726063		
701	Bulkhead gasket	03115004		
720	Spring	03835024		
802	Seal	03875052		
914	Seal	03875175		
915	Seal	03115010		
1075	Frame	03726033		
1114	Multi function tool	04865025		
1202	Cyclonic unit assy	04365083		
1203	Grill seal	03875170		
1204	Cyclonic unit filter	04365081		

**SENSORY WIRING DIAGRAM
(ALL TYPES- FIXED POWER / ROTARY CONTROL (BASIC+ ENHANCED)
APS/IR/APS**





SENSORY Fitting Notes (Base Models)

Access to Main components

Open fully the Bag cover using the moulded handle at the rear of the cleaner, if required to remove fully unclip at the front of Bag cover by prising the 2 lugs on front handle from the Lower body and remove.

Remove the Exhaust filter assy from the Motor cover, remove the 4 screws at each corner of the Motor cover and lift up.

Motor Removal

Procede as above Access to Main components

Remove the Motor Mount upper you now have access to the Motor.

Make a note of the 2 wires attached to the Motor and remove, lift out the Motor along with the rubber mount and plastic motor support, unless damaged you can leave the Motor mount lower in place.

Cord Reel /Module (On/Off Switch) Removal

Procede as above Access to Main components

Module Removal

You now have access to the Cord reel and Module (Includes On/Off Switch), to remove the Module and On/Off Switch unclip the module from its housing and unclip the Bag check indicator tube.

Lift up the Module assy and the Cord reel enough to gain access to the leads on the Cord reel, next taking note of the connections remove the 2 leads to the Cord reel assy then remove the 2 leads at the motor and pull the leads through the aperture in the Lower body, replace the Module(On/Off Switch).

Cord Reel Removal

Procede as above Access to Main components

Lift up the Module assy along with the Cord reel assy, disconnect the 2 leads to the module and unclip the Bag check indicator tube you can now remove the Cord reel.

When replacing the Cord reel refit in the aperture of the lower body, care needs to be taken that the Cord reel brake button is in place to engage when the Cord reel pedal is pressed.



Cord Reel /On Off Pedals Removal

Open fully the Bag cover using the moulded handle at the rear of the cleaner, if required to remove fully unclip at the front of Bag cover by prising the 2 lugs on front handle from the Lower body and remove.

You now have access to the Motor cover, remove the 4 screws at each corner and lift away, turn the Motor cover upside down the pedals are each located by 3 lugs using a Terminal screwdriver prise away one lug at a time and push down the Pedal and remove.

Rear Wheel Removal

Turn the cleaner upside down, using a flat bladed screwdriver feel for one of the 3 lugs holding the Rear wheel in position and push in, using your other hand push the wheel away from you and gently ease away.

Castor Wheel Removal

Turn the cleaner upside down, using a Terminal screwdriver gently ease away and pull away from cleaner.

Electrical Checks

Check condition of plug----- if the pins are burnt or body cracked take appropriate action.

Check condition of the mains lead -----if chipped or burnt, take appropriate action.

Insulation test

Open fully the Bag cover
Remove the pre - motor filter.

Use a Metrohm.

Bond the Live and Neutral pins with one of the meter clips and connect the other meter clip to a terminal screwdriver.

Insert the screwdriver through the grill onto the fan casing.

Select- The MEGOHMS SCALE =MINIMUM READING 1 MEGOHM

SENSORY DUST MANAGER CYCLONIC



BAGLESS CYCLONIC VERSION



The unique Dust Manager Cyclonic Cassette separates vacuumed dust from air by the action of the centrifugal force that bursts out inside it.

FILTERS

PREMOTOR FILTERS



S76

Product code: 03875166

EAN code: 8016361900639

Chinese production



S58

Product code: 03875043

EAN code: 5010418159455

Double layer premotor filter
European production



U27

Product code: 09205469

EAN code: 5010418169904

HEPA exhaust filter + both new and old premotor filter version to satisfy all customers



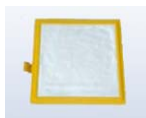
U28

Product code: 09205451

EAN code: 5010418169898

Washable exhaust microfilter + both new and old premotor filter version to satisfy all customers

EXHAUST FILTERS



T57

Product code: 04365030

EAN code: 5010418160932

Washable microfilter



T70

Product code: 04365062

EAN code: 8032767162198

Washable HEPA filter

CYCLONIC CASSETTE FILTERS



T76


Product code: 04365081

EAN code: 8016361900721

Sensory Cyclonic

HOSES


HOSE	
	E32
	Product code: 35600360
	EAN code: 8016361734104


COMPLETE HOSE	
	D79
	Product code: 35600361
	EAN code: 8016361734111


COMPLETE ZOOM TUBE	
	D92
	Product code: 35600526
	EAN code: 8016361743434
* Picture as an example	


NOZZLES

CARPET & FLOOR NOZZLES	
	G72
	Product code: 04845090
	EAN code: 8016361900646


TURBO NOZZLE	
	J22
	Product code: 04845091
	EAN code: 8016361900653


	G51
	Product code: 04845034
	EAN code: 5010418146707


	J19
	Product code: 04845046
	EAN code: 5010418158809


	G57
	Product code: 04845038
	EAN code: 5010418164350

CARESSE NOZZLE	
	G50
	Product code: 04845044
	EAN code: 5010418158793

	G67
	Product code: 04345058
	EAN code: 5010418150667

MINI TURBO NOZZLE	
	J20
	Product code: 09200356
	EAN code: 8032767166387

ALLERGY DEFENDER SPRAY	
	A30S
	Product code: 35600450
	EAN code: 8016361739758
	10 bottles per display

ALLERGY DEFENDER GRANULES	
	A31G
	Product code: 35600451
	EAN code: 8016361739765
	15 boxes per display

