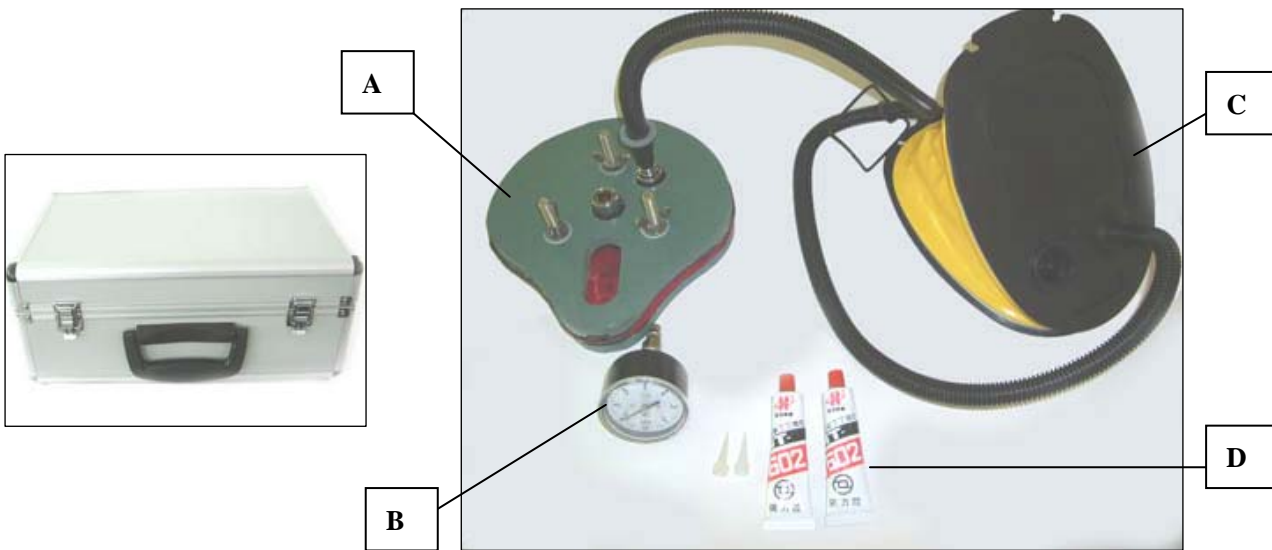


SERVICE MANUAL FOR THE AIR- PRESSURE TEST AND REPAIR OF IMMERSION SUITS

I. Immersion Suit Repair Kit (Set of Servicing Equipment)

The aluminum kit contains a set of Servicing Equipment.

- A. A face fixture (two parts),
- B. A pressure gauge (0-6kPa).
- C. A foot pump (with multi-valve adaptor).
- D. Glue and applicator (two pieces).



II. Adjust the Air- Test Device on the Immersion Suit



1. Lay the immersion suit on a work table and check for damages.



2. Place part 1 face fixture inside immersion suit hood area and zip up.

Attention: Stretch the hood fabric by pulling it to the direction of arrows. The hood should not have any folds.



3. Place part 2 face fixture on part 1, by adjusting its holes carefully through the bolts and joints.



4. Image of assembled face fixtures with hood. **Attention: The zipper head should pass through the hole.**



5. Install the o-ring gasket and tighten up the butterfly nut so as to eliminate leakage around the face seal.





6. Check the pressure gauge for any breaks on the dial surface or to the pointer.



7. Insert the Pressure Gauge at the face fixture, by pressing down -at the same time- the joint at face fixture.



9. Install the Connector for the foot pump, by pressing down the proper joint, so as to insert the connector.

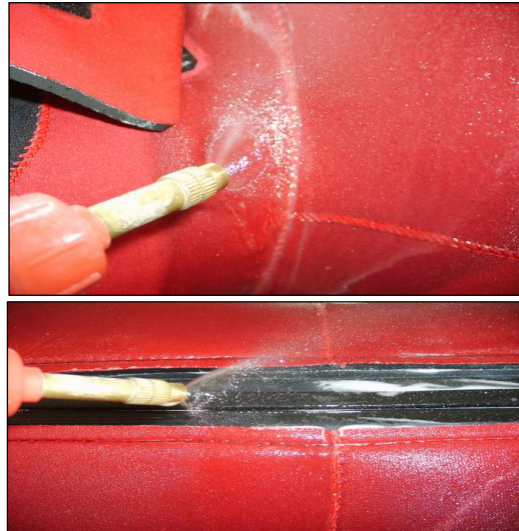


10. Adjust the multi-valve adaptor on the connector of face fixture.

III. Air- Test Procedure



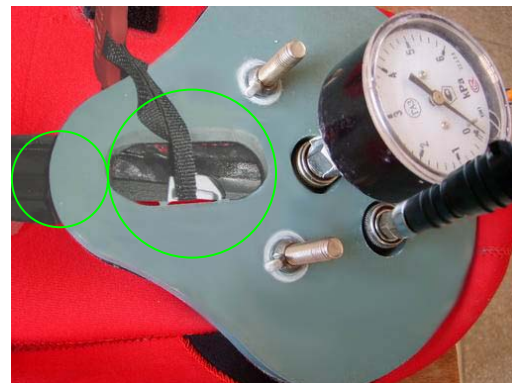
1. Provide air into the suit, through the foot pump, to a pressure of 0,7 to 1,4Kpa (0.1 to 0,2psi) [acc. MSC/Circ.1114.] Maintain the pressure to those limits for the air-test.



2. Sprinkle along seams and closures of the immersion suit with a soapy water solution.



3. Check carefully if any bubbles appear from the Immersion Suit4. It is normal that the bubbles appear in the zipper slides and the zipper toother part in the clamp.



4. It is normal that the bubbles appear in the zipper slides and the zipper toother part in the clamp.

IV. Procedures of Repair

- Remove the air-test device.
- Clean the suit thoroughly with fresh water and dry it, trying to leave the marks visual.

A. Repair of steams and closures (as described in the air- test procedure instructions)



1. Adapt the applicator on the glue tube for use.



2. Apply a gentle amount of glue on the marked leaking areas. Let it dry for 8-10 minutes. Then apply once again, a glue layer on the immersion suit damaged area. Leave the immersion suit till the next day for the next use.

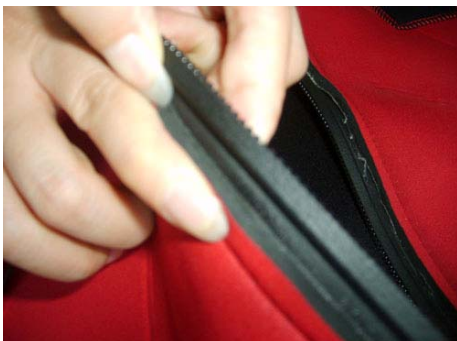
B. Repair of Rips, Tears and Punctures



1. With use of glue tube and applicator, apply a glue layer on both sides of immersion suit damaged area.



2. Let it dry for 8-10 minutes. Then apply, once again, a glue layer on both sides of Immersion suit's damaged area.



3. Then press the 2 sides together for 2 minutes. Leave the immersion suit till the next day for the next use.