

SABER®

ATD-80004

26 Watt Quad Light w/25' Cord

Owner's Manual

Features And Specifications:

- New electronic ballast for brighter light and increased durability
- 26W super bright fluorescent bulbs provide 250 Lux brightness
- 25 ft 16/3 SJTOW cord remains flexible in cold weather and is oil & grease resistant
- High impact shatter-proof housing
- Drop resistant with high impact Lexan lens
- Ergonomic handle for a more secure grip
- Equipped with rubber impact cover for added drop protection
- Tool tap outlet with power indicator & overload protection
- Includes 360° flexible ratcheting hook



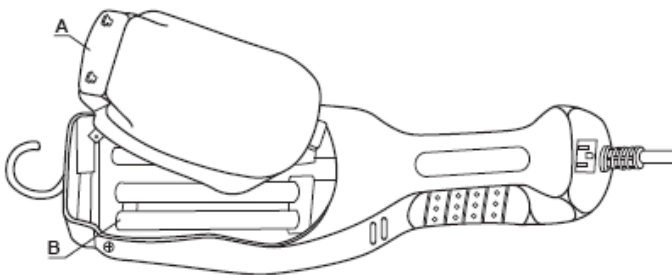
This device complies with Part 18 of the FCC rules. This product may cause interference to radio equipment and should not be installed near maritime safety communications equipment or other critical navigation or communication equipment operating between 0.45-30MHz.

Operating instructions

Simply plug into any 120 VAC outlet and turn on by pressing the on off switch located on the back of the handle.

To Change Bulb:

- Unplug unit from power source.
- Remove rubber impact cover.
- Unscrew two screws from lens.
- Open lens cover (A) and grasp end of bulb (B) and pull straight out.
- Slide new bulb into socket making sure that it seats all the way into the socket
- Put lens into place and replace screws
- Replace rubber impact cover

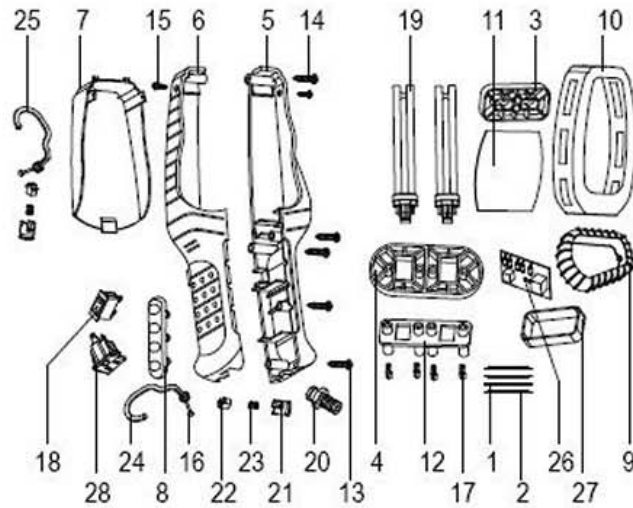


Cautions

- **Do NOT overload circuit** – Do not plug in more than 1500 watts or 12 amps into the base of this light. Check the amperage rating of the tool or appliance that you are using before connecting anything to the outlet(s) on this product to be sure that you are not overloading the circuit.
- **Do NOT service this reel light while it is plugged in.** It may cause electrical shock
- **Do NOT submerge in water.** – It may cause electrical shock and/or fires. To clean, wipe with damp cloth only, do not use solvents, and clean only when the unit is unplugged from power source.
- The warnings, cautions, and instructions discussed in this instruction manual cannot cover all possible conditions and situations that may occur. It must be understood by the operator that common sense and caution are factors which cannot be built into this product, but must be supplied by the operator.

SABER®

ATD-80004



ITEM#	ORDERING PART#	PART DESCRIPTION
1	PRT80010-01	Wire, black
2	PRT80010-02	Wire, white
3	PRT80010-03	Protector, bulb
4	PRT80010-04	Protector, lampholder
5	PRT80010-05	Handle, left
6	PRT80010-06	Handle, right
7	PRT80010-07	Clear lens
8	PRT80010-08	Insert
9	PRT80010-09	Protector, handle
10	PRT80010-10	Outer cover
11	PRT80010-11	Reflector paper
12	PRT80010-12	Lamp holder
13	PRT80010-13	Screw, ST3*20
14	PRT80010-14	Screw, ST3*35
15	PRT80010-15	Screw, ST3*8

ITEM#	ORDERING PART#	PART DESCRIPTION
16	PRT80010-16	Rivet, $\phi 3 \times 16$
17	PRT80010-17	Seat, lamp holder
18	PRT80010-18	On/Off switch
19	EIKDT1365	Bulb (x2)
20	PRT80010-20	Strain relief
21	PRT80010-21	Holder, hook
22	PRT80010-22	Prop
23	PRT80010-23	Pressure spring
24	PRT80010-24	Hook A
25	PRT80010-25	Hook B
26	PRT80010-26	PCB
27	PRT80010-27	Box, Ballast
28	PRT80010-28	Outlet
29	ATD80097	Complete Head Assy w/1' Cord
30	PRT80004-30	25' Cord