

REFRIGERATOR MANUFACTURER
Turbo air

**Commercial
Refrigerator
Service Manual**

**Sandwich Salad Unit
Under counter Refrigerator
Model No.: TUR-72SD
TST-72SD**

TABLE OF CONTENTS

1. FEATURE CHART

- 1-1. FRONT VIEW / SIDE VIEW (TUR-72SD)
- 1-2. FRONT VIEW / SIDE VIEW (TST-72SD)

2. WIRING DIAGRAMS

- 2-1. TUR-72SD
- 2-2. TST-72SD

3. PART DETAILS

- 3-1. COMPRESSOR COMPARTMENT
- 3-2. DOOR
- 3-3. REFRIGERATION COMPARTMENT

4. MAIN COMPONENTS

5. TEMPERATURE CONTROL INSTRUCTION

- 5-1. HOW TO USE THE TEMPERATURE CONTROL
- 5-2. FUNCTION TABLE

6. PARTS LIST

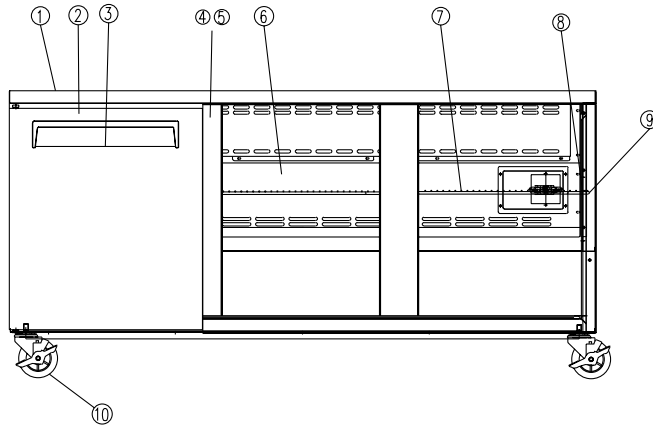
7. REPLACEMENT OF MAIN COMPONENTS

- 7-1. REPLACING DOOR
- 7-2. REFRIGERATION COMPARTMENT PARTS
- 7-3. COMPRESSOR COMPARTMENT PARTS
- 7-4. REPLACING THE EVAPORATOR & COOLING FAN MOTOR

1. FEATURE CHART

1-1. FRONT VIEW/SIDE VIEW (TUR-72SD)

FRONT VIEW



- 1 COUNTER TOP
- 2 DOOR
- 3 DOOR HANDLE
- 4 SUPPORTER MIDDLE(A)
- 5 SUPPORTER MIDDLE(B)
- 6 LOUVER
- 7 SHELF(R)
- 8 SHELF STANDARD
- 9 CABINET

10 CASTER(with Brake)

11 LINER

12 SHELF CLIP

13 EVAPORATOR FAN
MOTOR

14 EVAPORATOR COIL

15 EVAPORATOR DRAIN PAN

16 DRAIN HOSE

17 SUCTION LINE

18 COMPRESSOR

19 REAR GRILL

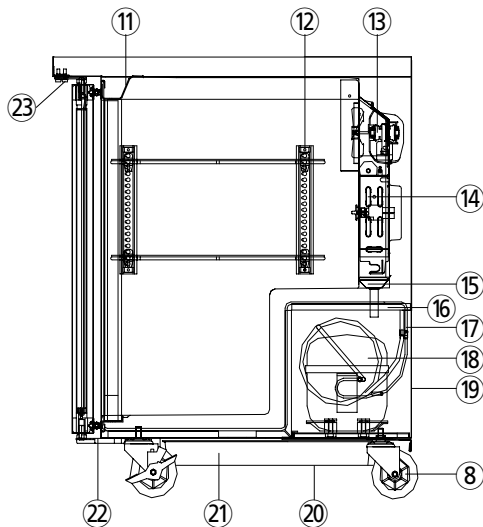
20 DRAIN PAN HOUSING

21 DRAIN PAN

22 DOOR HINGE BOTTOM

23 DOOR HINGE TOP

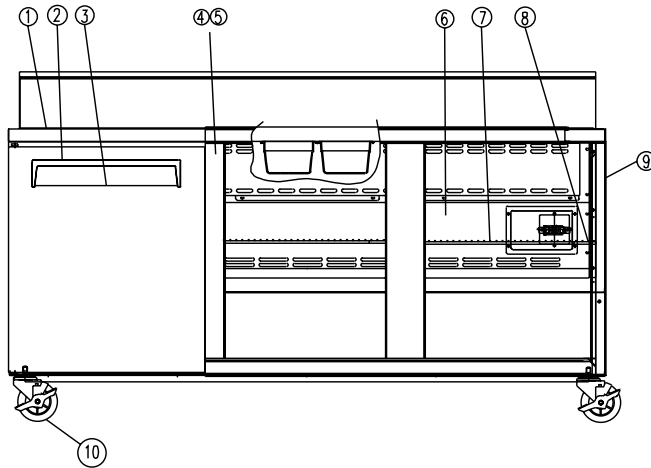
SIDE VIEW



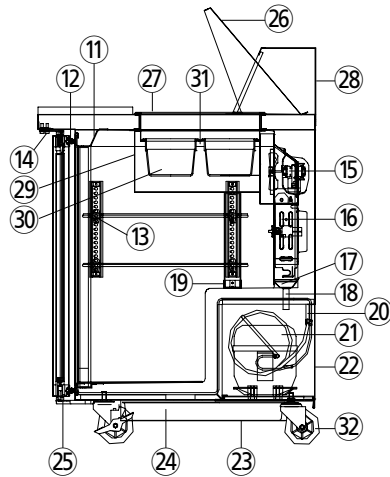
FEATURE CHART

1-2. FRONT VIEW/SIDE VIEW (TST-72SD)

FRONT VIEW



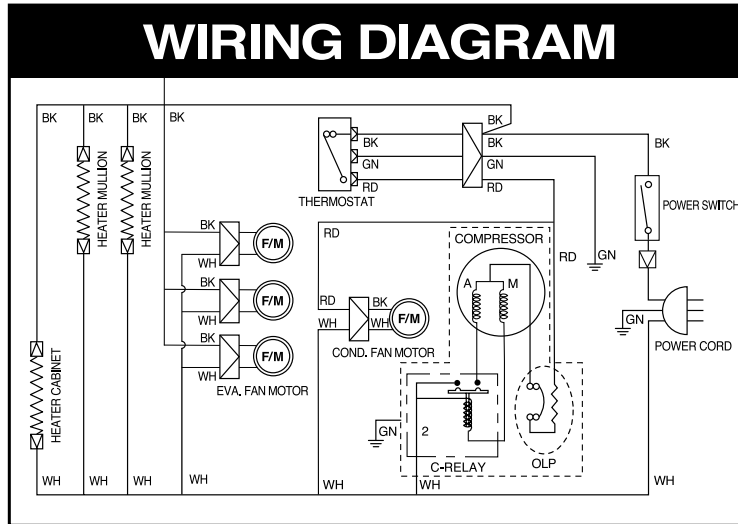
SIDE VIEW



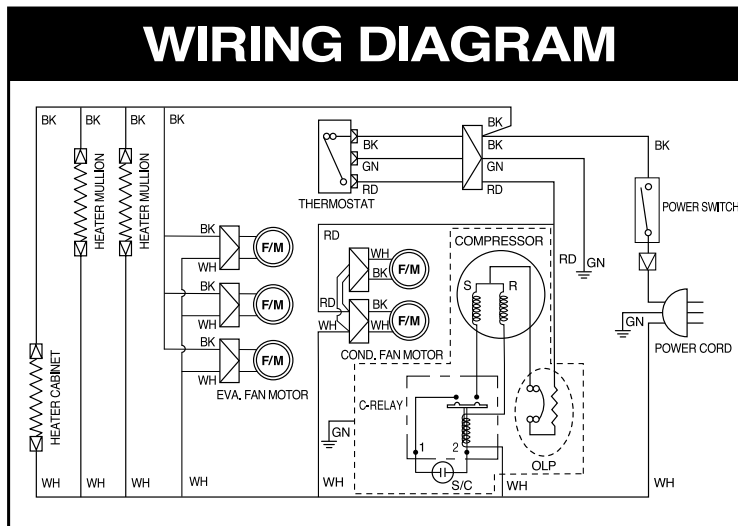
- 1 COUNTER TOP
- 2 DOOR
- 3 DOOR HANDLE
- 4 SUPPORTER MIDDLE (A)
- 5 SUPPORTER MIDDLE (B)
- 6 LOUVER
- 7 SHELF (RIGHT)
- 8 SHELF STANDARD
- 9 CABINET
- 10 CASTER (with Brake)
- 11 LINER
- 12 DOOR GASKET
- 13 SHELF CLIP
- 14 DOOR HINGE TOP
- 15 EVAPORATOR FAN MOTOR
- 16 EVAPORATOR COIL
- 17 EVAPORATOR DRAIN PAN
- 18 DRAIN HOSE
- 19 SHELF STANDARD RETAINER
- 20 SUCTION LINE
- 21 COMPRESSOR
- 22 REAR GRILL
- 23 DRAIN PAN HOUSING
- 24 DRAIN PAN
- 25 DOOR HINGE BOTTOM
- 26 HOOD LID
- 27 PAN SUPPORTER
- 28 HOOD
- 29 PAN DUCT
- 30 PAN
- 31 PAN SUPPORT BAR
- 32 CASTOR

2. WIRING DIAGRAMS

2-1. TUR-72SD

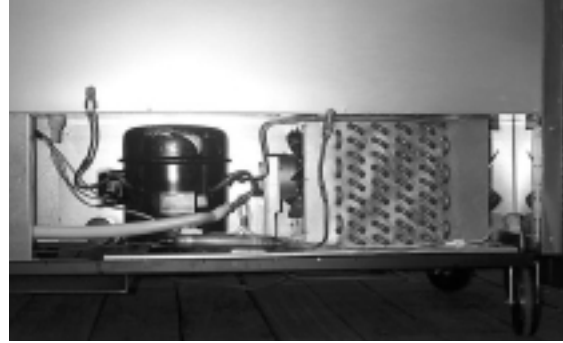
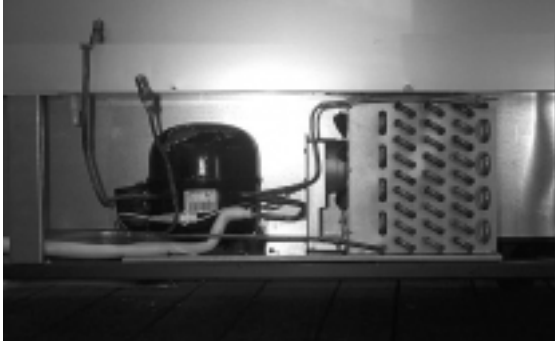


2-2. TST-72SD



3. PART DETAILS

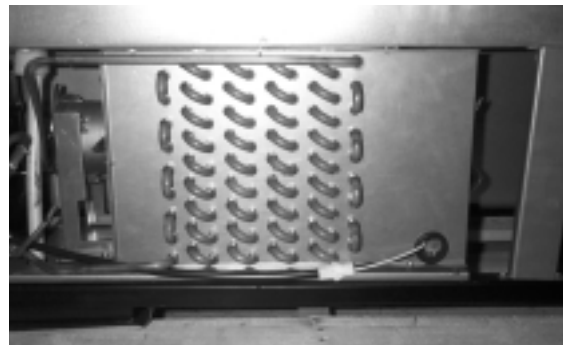
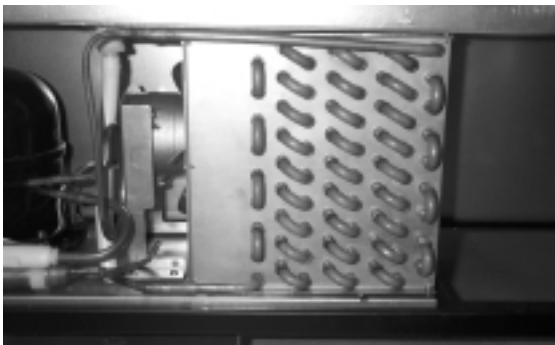
3-1. COMPRESSOR COMPARTMENT



CONDENSING UNIT ASSEMBLY

TUR-72SD

TST-72SD



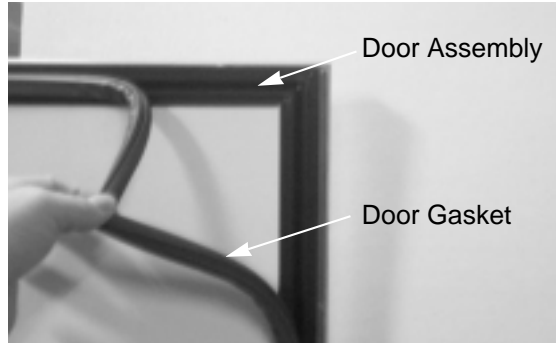
CONDENSER FAN MOTOR ASSEMBLY

TUR-72SD

TST-72SD

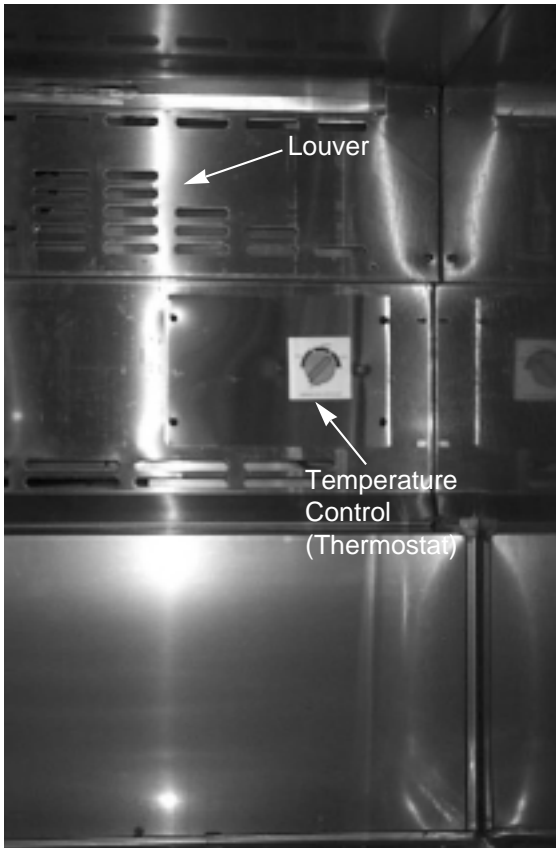
PART DETAILS

3-2. DOOR

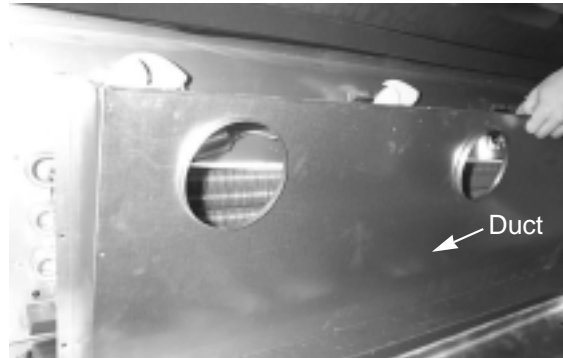


DOOR GASKET

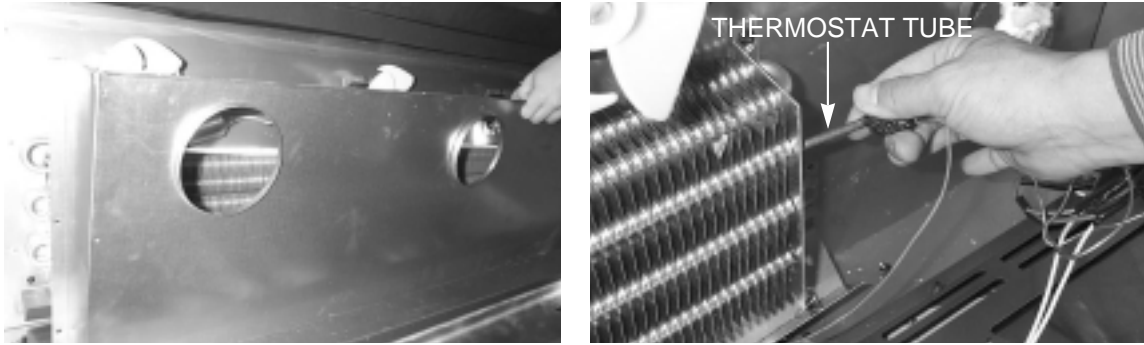
3-3. REFRIGERATION COMPARTMENT



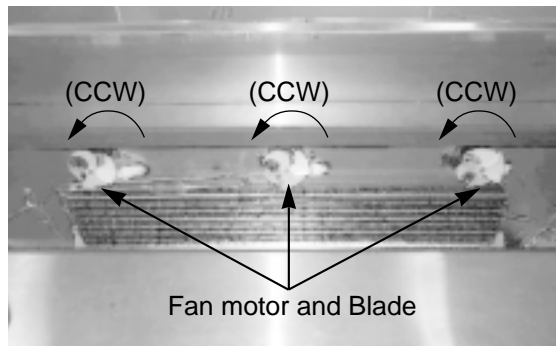
LOUVER



DUCT



EVAPORATOR COIL (TUR-72SD,TST-72SD)



EVAPORATOR FAN MOTOR



THERMOSTAT

4. MAIN COMPONENTS

1. COMPRESSOR

| MODEL | PART NAME | PART NO. | HORSE POWER | CAPACITY | TYPE OF MOTOR | INPUT | MAKER |
|----------|------------|------------|-------------|-------------------------------|---------------|-------|---------|
| TUR-72SD | SK6A1C-H2Y | 3020014540 | 1/4 HP | 4,440 BTU/h (1,129 Kcal/h) | RSIR | - | SAMSUNG |
| TST-72SD | T6217Z | 3020014570 | 5/8HP | 7,638.4BTU/h (1,925Kcal/h) | CSIR | - | EMBRACO |

2. COMPRESSOR RELAY, OVERLOAD

| MODEL | RELAY | PART NO. | OVERLOAD | PART NO. | MAKER | NOTE |
|----------|----------------|----------|---------------|----------|---------|------|
| TUR-72SD | MTRP0052-02 | - | 4TM811XHB | - | SAMSUNG | |
| TST-72SD | 9660-A-041-191 | | MRT00AFW-3187 | - | EMBRACO | |

3. COMPRESSOR CAPACITOR

| MODEL | STARTING | PART NO. | RUNNING | PART NO. | MAKER | NOTE |
|----------|----------------------|----------------|---------|----------|-------|------|
| TUR-72SD | - | - | - | - | - | - |
| TST-72SD | 330V 189~227 μ F | Comp. Assembly | | - | - | - |

4. CONDENSER FAN MOTOR

| MODEL | PART NAME | PART NO. | POLE | INPUT | TYPE | BLADE (NUMBER) | MAKER |
|----------------------|----------------|------------|------|-------|-----------------------|----------------|----------|
| TUR-72SD TST-72SD | IS-4420DWSN-2A | 3963328120 | 4P | 47W | Shaded Pole Induction | AL 5 | SUNGSHIN |

5. EVAPORATOR FAN MOTOR

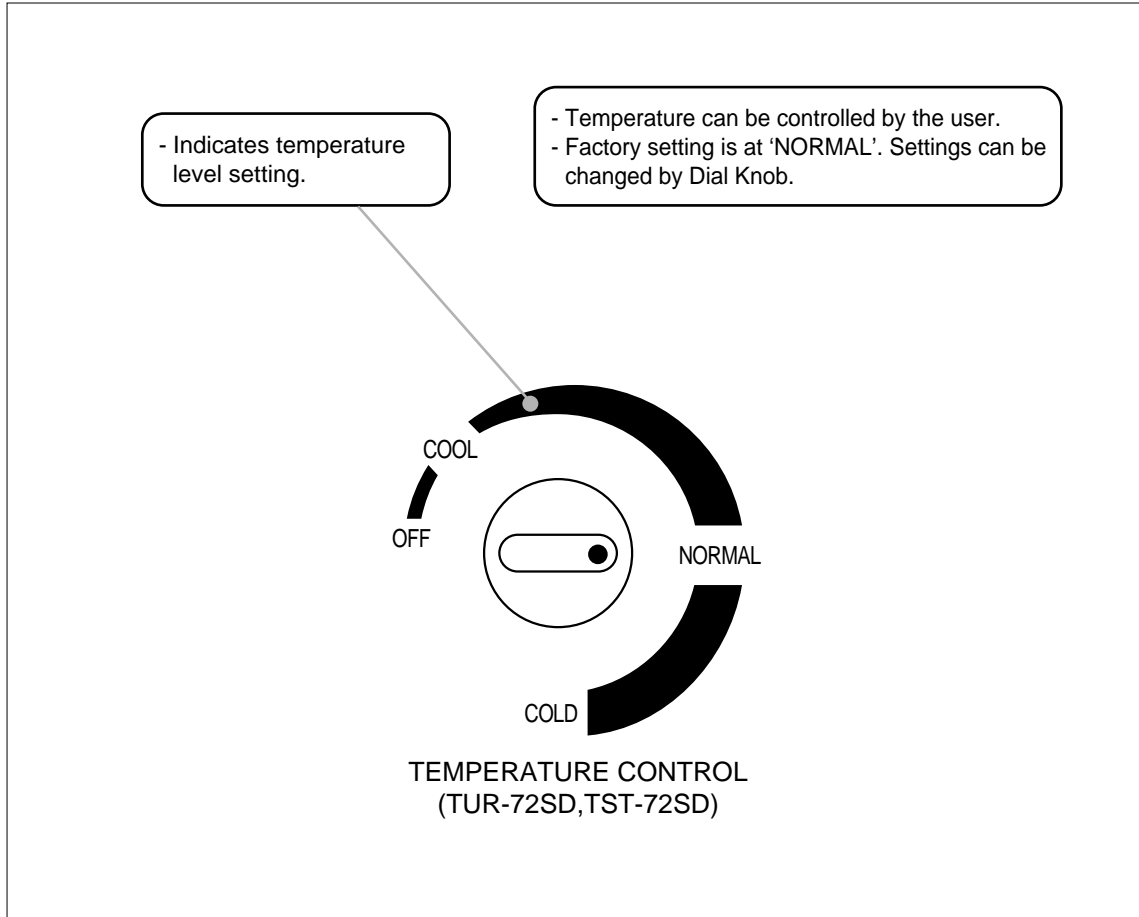
| MODEL | PART NAME | PART NO. | POLE | INPUT | TYPE | BLADE (NUMBER) | MAKER |
|----------------------|--------------|------------|------|-------|-----------------------|----------------|----------|
| TUR-72SD TST-72SD | DAI-6152DEUA | 3963339900 | 2P | 225W | Shaded Pole Induction | NA-66 4 | DEAYOUNG |

6. SWITCH

| PART NAME | PART NO. | RATING | MAKER |
|------------------------------|------------|----------------|--------|
| POWER SWITCH (ROCKER SWITCH) | 30281Q0100 | 125V/15A | SKT |
| THERMOSTAT | 30283M0300 | K55Q-5607, 16A | RANGCO |

5. TEMPERATURE CONTROL INSTRUCTION

5-1. HOW TO USE THE TEMPERATURE CONTROL



5-2. FUNCTION TABLE

| No | Function | Controlled Part | Description | | | | | | | | | | | | |
|----------------|---|--|--|-----|------|--------|------|---------------|--|------------|--|----------------|------|------|------|
| 1 | Temperature Control (K55Q-5607) Model: TUR-72SD TST-72SD | Compressor Evap. Fan Motor Cond. Fan Motor | 1. The temperature can be changed by turning the dial knob. 2. Compressor is automatically turned on and off by thermostat. ■ Cut in and out temperature chart. °F <table border="1" style="margin-left: 20px;"> <thead> <tr> <th>No.</th> <th>Cool</th> <th>Normal</th> <th>Cold</th> </tr> </thead> <tbody> <tr> <td>Cut in</td> <td></td> <td>40.1 ± 2.7</td> <td></td> </tr> <tr> <td>Cut Out</td> <td>23.9</td> <td>21.2</td> <td>17.6</td> </tr> </tbody> </table> | No. | Cool | Normal | Cold | Cut in | | 40.1 ± 2.7 | | Cut Out | 23.9 | 21.2 | 17.6 |
| No. | Cool | Normal | Cold | | | | | | | | | | | | |
| Cut in | | 40.1 ± 2.7 | | | | | | | | | | | | | |
| Cut Out | 23.9 | 21.2 | 17.6 | | | | | | | | | | | | |

6. PARTS LIST FOR SALAD & UNDERCOUNTER MODEL

| Part name | part Code | Description | Model | |
|-------------------------------|------------|--------------------------|----------|----------|
| | | | TUR-72SD | TST-72SD |
| Cabinet | | | | |
| CABINET ASSEMBLY | 30208T0100 | | | 1 |
| CABINET ASSEMBLY | 30208T0110 | | 1 | |
| CASTOR | 30265L0300 | WITH BRAKE (5 inch) | 2 | 2 |
| CASTOR | 30265L0400 | 5 inch | 2 | 2 |
| DOOR | | | | |
| DOOR ASSEMBLY(LEFT) | 30200M1000 | STS+URT | 1 | 1 |
| DOOR ASSEMBLY(RIGHT) | 30200M0200 | STS+URT | 2 | 2 |
| DOOR GASKET | 30223M0101 | PVC-S | 3 | 3 |
| DOOR BUSHING | 30207H1000 | NA-66 | 6 | 6 |
| DOOR HINGE TOP (L) | 30229M0100 | STS304 | 1 | 1 |
| DOOR HINGE TOP (R) | 30229M0200 | STS304 | 2 | 2 |
| DOOR HINGE BOTTOM (L) | 30229M0300 | STS304 | 1 | 1 |
| DOOR HINGE BOTTOM (R) | 30229M0400 | STS304 | 2 | 2 |
| DOOR HINGE SPRING | 30251M0100 | HSW-3/ø0.102"(Diameter) | 3 | 3 |
| COMPRESSOR COMPARTMENT | | | | |
| CONDENSER COIL | 30200T0710 | CU | 1 | |
| CONDENSER COIL | 30200T0700 | CU | | 1 |
| SUCTION LINE(A) | 30244T0100 | CU | 1 | 1 |
| COMPRESSOR BASE | 30203T0500 | SBHG, T1.6 | 1 | |
| COMPRESSOR BASE | 30203T0400 | SBHG, T1.6 | | 1 |
| COMPRESSOR | 3020014540 | SK6A1C-H2Y | 1 | |
| COMPRESSOR | 3020014570 | T6217Z(115V/60) | | 1 |
| POWER CORD | 30213A1012 | KKP-30(9.85ft) | 1 | 1 |
| REAR GRILL(L) | 30214T1200 | SWRM-B/0.078"(Thickness) | 1 | 1 |
| REAR GRILL(R) | 30214T1210 | SWRM-B/0.078"(Thickness) | 1 | 1 |
| COMPRESSOR DRYER | 30268L0300 | XH-9/30g | 1 | 1 |
| DOOR GASKET BASE | 30223M0101 | PVC-S | 3 | 3 |
| DRAIN PAN HOUSING | 30225M0800 | SBHG/0.039"(Thickness) | 1 | 1 |

PARTS LIST FOR SALAD & UNDERCOUNTER MODEL

| Part name | part Code | Description | Model | |
|--|------------|------------------------------|----------|----------|
| | | | TUR-72SD | TST-72SD |
| DRAIN HOSE | 30232M0210 | PVC-S | 1 | 1 |
| CONDENSER FAN MOTOR | 3963328120 | IS4420DWSN-2A | 1 | 2 |
| CONDENSER FAN BLADE | 30218F0200 | AL ø 225 | 1 | 2 |
| CONNECTING PIPE | 30244A0501 | ø 4x0.6 | 1 | 1 |
| CAPILIARY TUBE(B) | 30244T0600 | OD2.8XID1.6XL1070 | 1 | |
| CAPILIARY TUBE(B) | 30244T0400 | OD2.8XID1.6XL3350 | | 1 |
| SUCTION LINE(B) | 30244T0210 | OD9.52XT0.8XL1630 | 1 | |
| SUCTION LINE(B) | 30244T0200 | OD9.52XT0.8XL1630 | | 1 |
| PIPE CONNECTOR (COMPRESSOR AND CONDENSER) | 30244T0700 | OD6.35XT0.6XL520 | 1 | |
| PIPE CONNECTOR (COMPRESSOR AND CONDENSER) | 30244T0500 | OD6.35XT0.6XL393 | | 1 |
| COMPRESSOR HARNESS ASSEMBLY | 30227T0210 | | 1 | |
| COMPRESSOR HARNESS ASSEMBLY | 30227T0200 | | | 1 |
| REFRIGERATION COMPARTMENT | | | | |
| CUTTING BOARD | 30241T0100 | LD-PE/0.5"(Thickness) | | 1 |
| MULLION HEATER | 30228M0303 | 115V/15W PVC | 2 | 2 |
| SIDE HEATER | 30228M0100 | 115V/60W PVC | 1 | 1 |
| CUSHION SPACER | 3021500500 | NR | 2 | 2 |
| PAN DUCT | 30269T0200 | SUS304-2B/0.025"(Thickness) | | 1 |
| EVAPORATOR FAN BLADE | 3011802400 | CCW/ ø 4.33"(Diameter) | 3 | 3 |
| EVAPORATOR FAN MOTOR FIXTURE | 30220T0300 | STS304 | 6 | 6 |
| LOUVER | 30214T0700 | SUS304-2B/0.024"(Thickness) | 1 | |
| LOUVER | 30214T0800 | SUS304-2B/0.024"(Thickness) | | 1 |
| SHELF STANDARD | 30220M0300 | SUS304-2B/L=256mm | 8 | 8 |
| SHELF STANDARD | 30220M2300 | SUS304-2B/L=208mm | 4 | 4 |
| SHELF CLIP | 30220L0900 | PA6/16PCS | 12 | 14 |
| EVAPORATOR DRAIN PAN | 30225T0100 | STS304-2B | 1 | 1 |
| PAN SUPPORT BAR | 30225M0700 | STS-304-4B/0.028"(Thickness) | | 8 |
| LID HANDLE | 3022600300 | AL | | 1 |

PARTS LIST FOR SALAD & UNDERCOUNTER MODEL

| Part name | part Code | Description | Model | |
|-----------------------------|------------|--------------------------|----------|----------|
| | | | TUR-72SD | TST-72SD |
| THERMOSTAT HARNESS | 30227M0600 | | 1 | 1 |
| MULLION INSULATOR | 30233T0100 | F-PS | 2 | 2 |
| LOUVER TOP | 30214M3500 | STS304/0.028"(Thickness) | | 1 |
| EVAPORATOR-FAN MOTOR | 3963339900 | DAI-6152DEUA(CCW) | 3 | 3 |
| PAN | 30211M0600 | PC | | 18 |
| SHELF(LEFT) | 30278M0210 | STS | 2 | 1 |
| SHELF(MIDDLE) | 30278T0200 | STS | 2 | 1 |
| SHELF(RIGHT) | 30278M0410 | STS | 2 | 1 |
| CUTTING BOARD FITTING SCREW | 7S105A0564 | | | 2 |
| HOOD LID FIXING NUT | 30260M0200 | STS/0.157" | | 4 |
| HOOD LID FIXING BOLT | 7002501008 | 5X10 STS | | 2 |
| MULLION PLASTIC | 30253T0200 | ABS | 2 | 2 |
| MULLION STAINLESS INSERT | 30253T0100 | STS304/0.028"(Thickness) | 2 | 2 |
| PAN SUPPORTER | 30253T0400 | STS304/0.039"(Thickness) | | 1 |
| THERMOMETER | 30283G0410 | S3511-91(MILJOCO) | 1 | 1 |
| THERMOSTAT | 30283L0100 | K55Q-5607 | 1 | 1 |
| LOUVER FIXTURE | 30220M0800 | | | 2 |
| EVAPORATOR COIL | 30270T0100 | CU | 1 | 1 |
| SAFETY HINGE ASSEMBLY | 30200T1300 | HSS | | 2 |

7. REPLACEMENT OF MAIN COMPONENTS

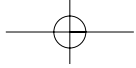
7-1. REPLACING DOOR

A. Unscrew the door hinge top



B. Lift the door

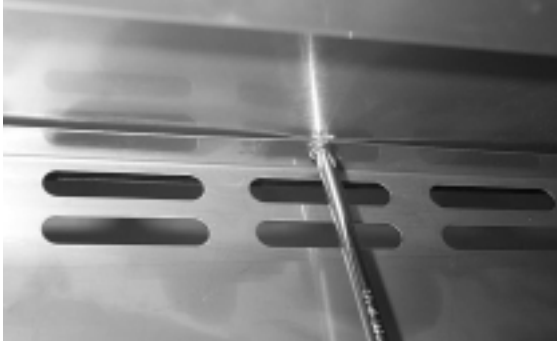




REPLACEMENT OF MAIN COMPONENTS

7-2. REFRIGERATION COMPARTMENT PARTS

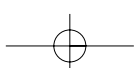
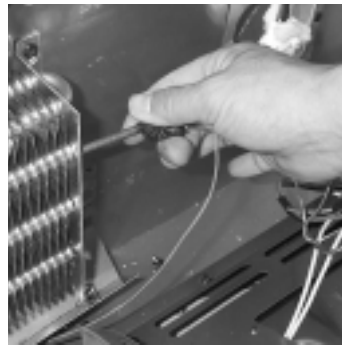
A. Disassemble the pan duct



B. Disassemble the louver



C. Replace the thermostat & sensor

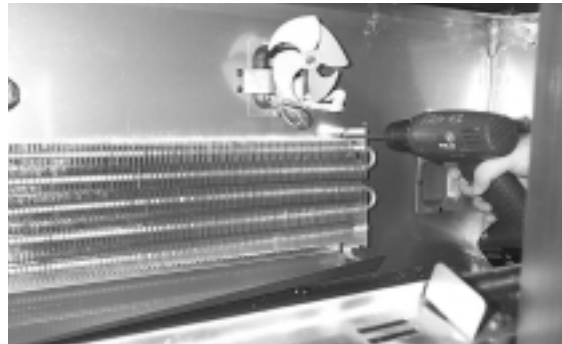


REPLACEMENT OF MAIN COMPONENTS

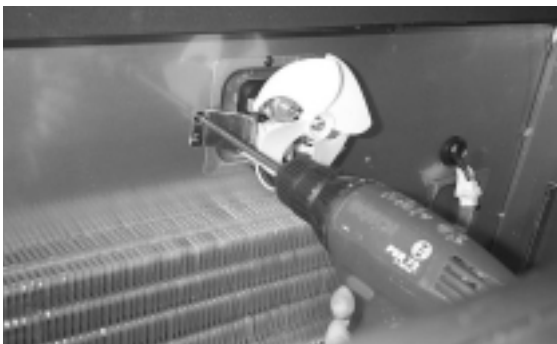
D. Disassemble the duct



E. Remove the evaporator coil



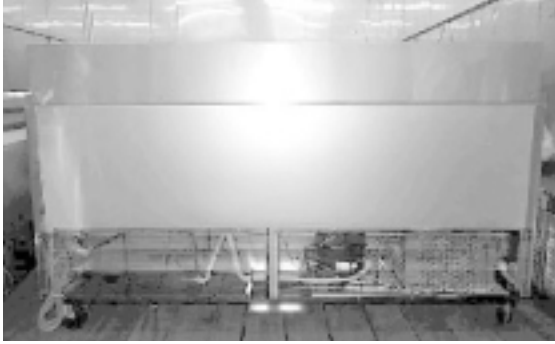
F. Disassemble the evaporator fan motor



REPLACEMENT OF MAIN COMPONENTS

7-3. COMPRESSOR COMPARTMENT PARTS

A. Disassemble the rear grill



B. Disassemble the condensing unit



Unscrew two screws as above.



Pull out the condensing unit.

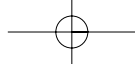
C. Disconnect the connectors



REPLACEMENT OF MAIN COMPONENTS

D. Disassemble the condenser fan motor





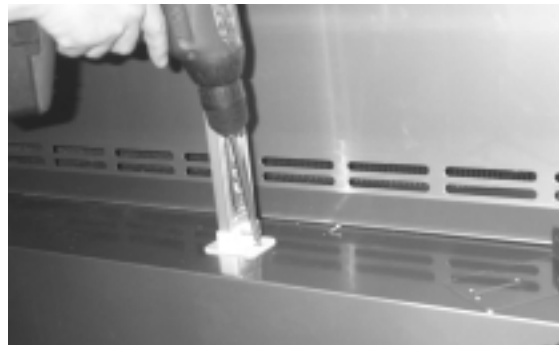
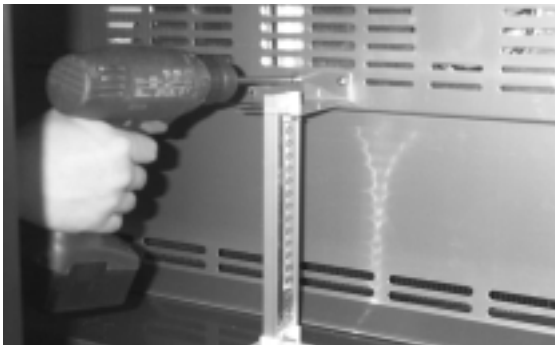
REPLACEMENT OF MAIN COMPONENTS

7-4. Replacing the Evaporator & Evaporator fan motor.

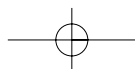
A. Remove the pans.



B. Unscrew the screws located on up and down of the shelf standad.

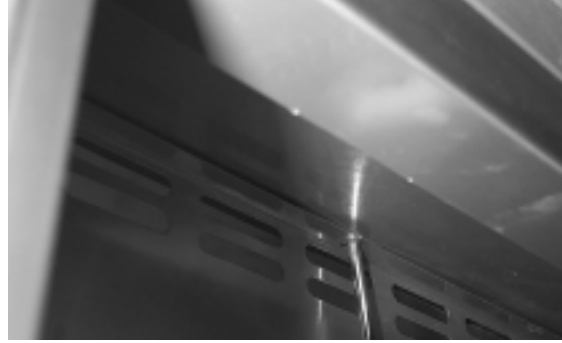
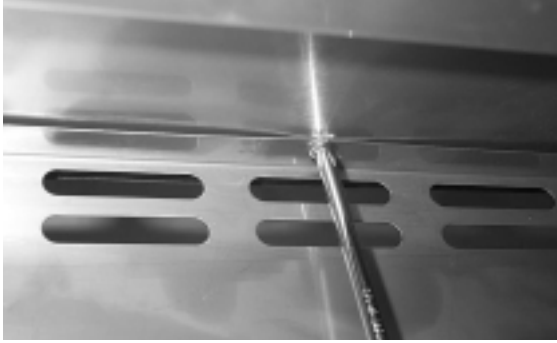


C. Remove the PAN SUPPORT FRAME.



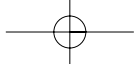
REPLACEMENT OF MAIN COMPONENTS

D. Unscrew the screws located on top and bottom of the pan duct.



E. Take out the pan duct through the upper hole.





REPLACEMENT OF MAIN COMPONENTS

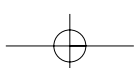
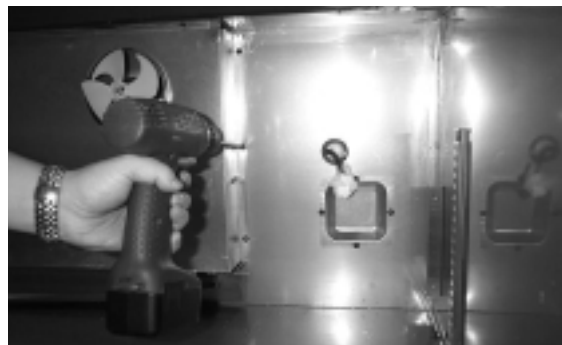
F. Unscrew the screws located on left and right side of the louver.



G. Take out the louver through the upper hole.



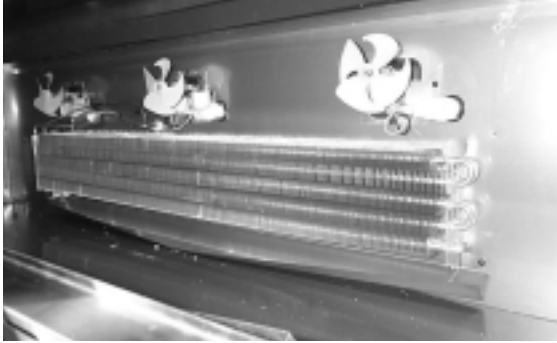
H. Unscrew the screws located on both sides and top of the duct & louver fixture.



REPLACEMENT OF MAIN COMPONENTS



I. And then, you can replace fan motor, evaporator coil and thermo sensor.



ABOUT THIS MANUAL

VISION CREATIVE, INC.

5가 526

16

| | | | |
|---|-------------------|------------|---------------|
| | () | TEL | |
| MODEL | TUR,TST - 72SD() | | |
| BUYER | | | |
| | 1 | 2002.11.2 | 6 2002.11.22 |
| | 2 | 2002.11.5 | 7 2002.11.29 |
| | 3 | 2002.11.7 | 8 2002.12.4 |
| | 4 | 2002.11.14 | 9 2002.12.11 |
| | 5 | 2002.11.18 | 10 2003.01.06 |
| | (2002.12.11) | | |
| <p>MEMO 6 - 2,3,8,11p 7 - 5,7,8,9,10,11,12p 8 - ,10,12,16p 9 - 10,11,12p 10 - 18, 19p 가 2003.01.13 - 18p, 19p, 20p, 21p(2p 가) 2003.01.15 - 4p, 9p, 10p, 11p, 18p 2003.01.22 - 3p, 7p, 10p, 12p, 14p, 15p, 16p, 17p, 18p, 19p, 20p, 21p 2003.01.25 -</p> | | | |
| | page | SIGN | |

VISION

TEL: 757 - 9340 FAX: 774 - 1039