



INSTRUCTIONS

-J03178

REV. 04-22-2004

Kit Number 75229-03 and 75241-03

FUEL-LEVEL SENDING UNIT KIT

General

Kit 75229-03 fits all 2003 and later:

- FLHT/I (Electra Glide®),
- FLHTC/I (Electra Glide® Classic),
- FLHTCUI (Ultra Classic® Electra Glide®),
- FLTRI (Road Glide®), and
- FLHTPI model motorcycles.

Kit 75241-03 fits all 2003 and later:

- FLHR/I (Road King®),
- FLHRS/I (Road King® Custom),
- FLHRCI (Road King® Classic), and
- FLHPI and FLHPEI model motorcycles.

See the Service Parts illustration for kit contents.

Additional Parts Required

The following items must also be replaced when performing this installation.

- (1) Canopy gasket, part number 61402-02.
- (10) Screws, self-sealing, Torx®, part number 1311D.
- (1) "O"-ring, part number 11380

These items are available from any Harley-Davidson dealer.

NOTE

This instruction sheet references Service Manual information. A Service Manual for your model motorcycle is required for this installation and is available from any Harley-Davidson Dealer.

Installation

Removing the Old Sending Unit

⚠ WARNING

To prevent accidental vehicle start-up, which could cause death or serious injury, disconnect negative (-) battery cable before proceeding. (00048a)

1. Refer to the Service Manual and follow the instructions given to remove the seat and disconnect the negative battery cable. Retain all seat mounting hardware.

⚠ WARNING

When servicing the fuel system, do not smoke or allow open flame or sparks in the vicinity. Gasoline is extremely flammable and highly explosive, which could result in death or serious injury. (00330a)

2. See the FUEL LEVEL SENDER (CARBURETED or FUEL INJECTED) instructions **for your model** in the Service Manual. Drain the fuel tank, then remove the canopy and the attached fuel-level sending unit.

⚠ WARNING

Thoroughly clean and dry the canopy and fuel-level sender assembly in a well-ventilated area before drilling the assembly. Failure to clean and dry the assembly in a well-ventilated area could cause a fire, resulting in death or serious injury.

3. In a well-ventilated area, use an evaporative solvent such as a brake cleaner, and compressed air to thoroughly clean the canopy and sending unit assembly.
4. See FUEL LEVEL SENDER, REMOVAL in the Service Manual to disassemble the fuel-level sending unit from the support arm on the underside of the canopy. Retain the 3-way connector from the old sending unit.
5. **For fuel injected models:** See the Service Parts illustration. Obtain the new fuel-level sending unit (1) from the kit.

For carbureted models: See the Service Parts illustration. Obtain the new fuel-level sending unit (1) from the kit. Cut the black wire coming from the 2-way connector as close as possible to the splice inside the wire loom. Pull the connector, along with the attached orange wire and socket terminal out of the loom and discard it.

Installing the New Fuel-Level Sending Unit

6. See FUEL LEVEL SENDER, INSTALLATION in the Service Manual to assemble the new sending unit
 - **For fuel injected models:** to the fuel pump housing, using the screw (3) from the kit.
 - **For carbureted models:** to the support arm on the canopy, using the blind rivet (2) from the kit.
7. Insert the terminals from the new fuel-level sender into the 3-way connector saved in Step 4.
 - Insert the **black** wire into chamber 3 (marked "•••").
 - Insert the **yellow** wire into chamber 2 (marked "••").
 - **For fuel injected models:** Insert the **orange** wire into chamber 1 (marked "•").
 - **For carbureted models:** Chamber 1 (marked "•") remains empty.
8. Refer to CANOPY CONNECTOR/ O"-RING in the Service Manual to replace the existing "O"-ring with a **new** "O"-ring (purchased separately).
9. See the FUEL LEVEL SENDER, CANOPY INSTALLATION instructions **for your model** in the Service Manual. Install the 3-way connector into the receptacle on the top of the canopy.

10. Attach the spade connector to the tab on the underside of the canopy.
11. Manually cycle the float assembly through a few full cycles, from empty to full, to ensure that the float contacts function correctly. View the fuel gauge while moving the float.
12. Install the canopy and attached fuel-level sending unit, using a **new** canopy gasket and ten **new** Torx screws (purchased separately).
13. Fasten the wiring in the same way as the original installation with the **new** cable tie (4) from the kit.

14. Fill the fuel tank with fuel and check for leaks.
15. Refer to the Service Manual and follow the instructions given to re-attach the negative battery cable and install the seat.

⚠ WARNING

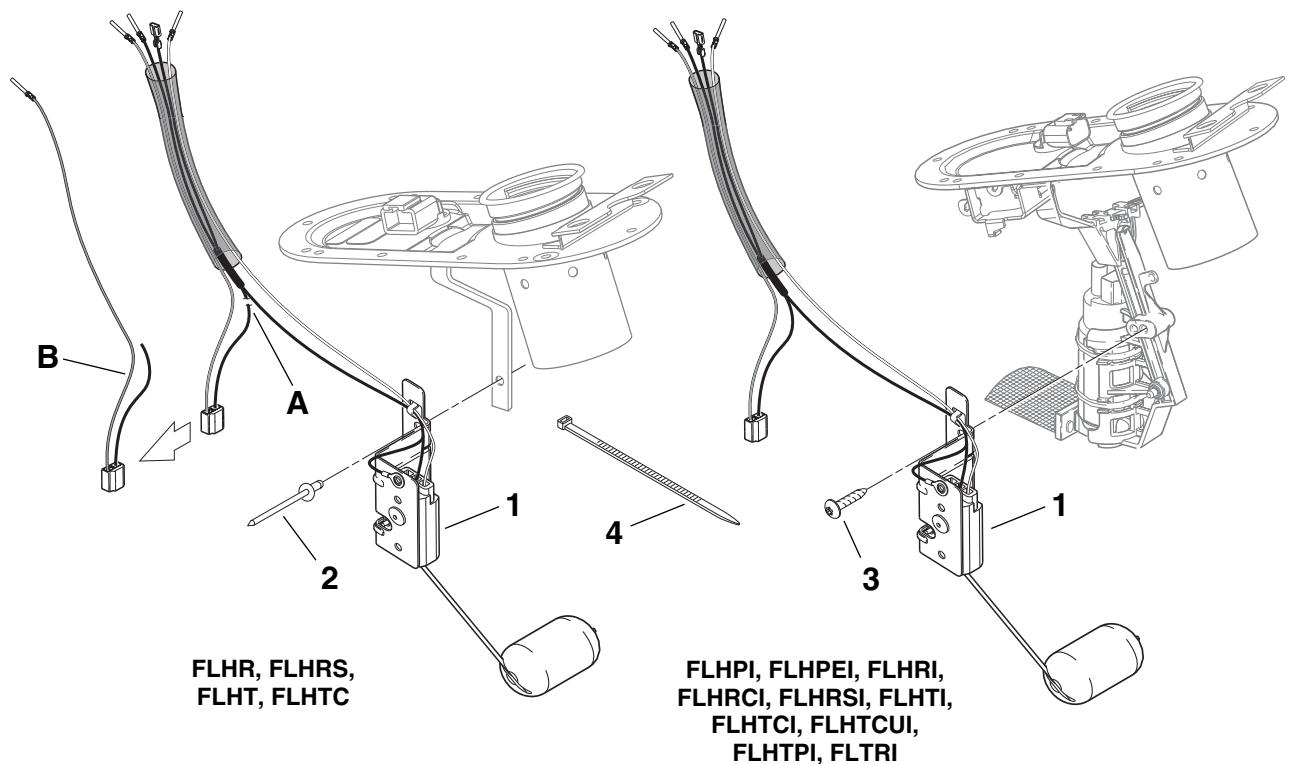
After installing seat, pull upward on front of seat to be sure it is in locked position. While riding, a loose seat can shift causing loss of control, which could result in death or serious injury. (00070a)



Service Parts

Part No. 75229-03, 75241-03 | Date 04/04
Fuel-Gauge Sending Unit

i02499b



Kit 75229-03: Fuel-Level Sending Unit Kit (FLHT, FLTR, shown):

Kit 75241-03: Fuel-Level Sending Unit Kit (FLHR, FLHP):

Item	Description	Part No.
1	Fuel-gauge sending unit †	Not sold separately
2	Blind rivet	8704
3	Screw, truss head Torx®, K50-2.24 x 17.25 mm	1314
4	Cable strap	10065

†NOTE

The sending units in these kits were designed for fuel-injected models, and must be modified to fit carbureted applications. See illustration items A and B, and Step 5 in the instructions.

Item	Modification for carbureted applications
A	Cut the black wire as close as possible to the splice.
B	Pull the orange wire and connector out of the loom and discard.