

CHAPTER 10

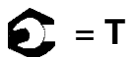
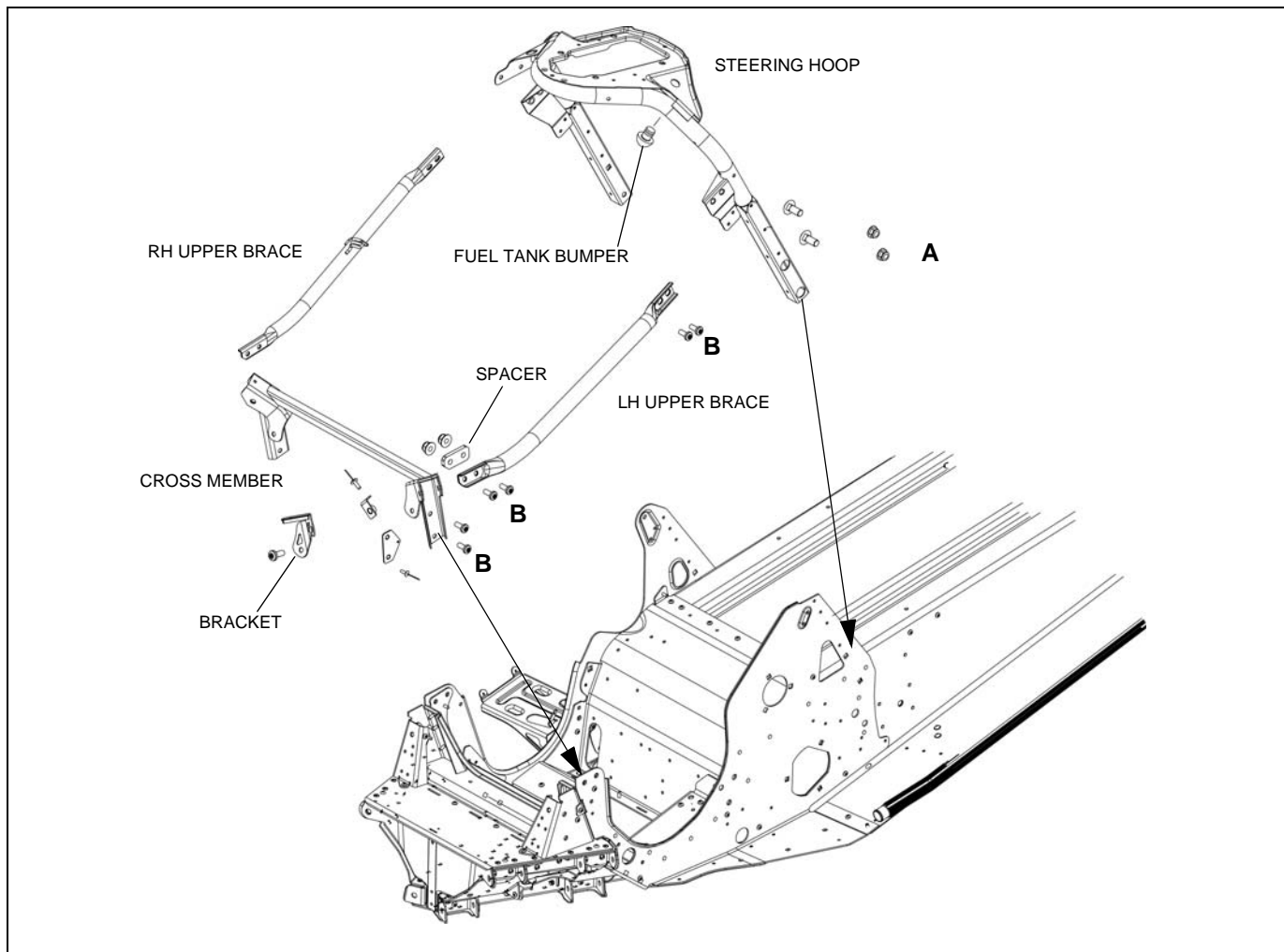
Chassis

IQ CHASSIS COMPONENTS	10.2
STEERING HOOP ASSEMBLY (TYPICAL)	10.2
HOOD ASSEMBLY	10.3
HOOD / PLASTIC REPAIR	10.3
LWT HOOD HINGE ASSEMBLY	10.4
FRONT BUMPER ASSEMBLY (TYPICAL)	10.4
LWT FRONT BUMPER / FENDERS	10.5
IQ CONSOLE ASSEMBLY (TYPICAL)	10.6
RMK TUNNEL	10.6
FENDERS AND SIDE PANELS	10.7
600 WIDETRAK IQ FENDER ASSEMBLY	10.8
600 WIDETRAK IQ CONSOLE	10.9
600 WIDETRAK IQ NOSEPAN/BUMPER ASSEMBLY	10.10
600 WIDETRAK IQ SHOCK TOWER ASSEMBLY	10.11
600 WIDETRAK IQ CHASSIS	10.12
SEAT ASSEMBLIES	10.13
IQ FIXED SEAT ASSEMBLY	10.13
IQ RAW SEAT ASSEMBLY	10.13
IQ REMOVABLE SEAT ASSEMBLY	10.13
2007 IQ TOURING SEAT ASSEMBLY	10.14
2008 IQ TOURING SEAT ASSEMBLY	10.15
2011 IQ 550 136/LXT SEAT AND REAR RACK	10.16
SEAT COVER REPLACEMENT	10.17
DECALS	10.17
DECAL REMOVAL	10.17
DECAL INSTALLATION	10.19

Chassis

IQ CHASSIS COMPONENTS

Steering Hoop Assembly (Typical)



A: 18 Ft.Lb. (24 Nm)

B: 21 Ft.Lbs. (28 Nm)

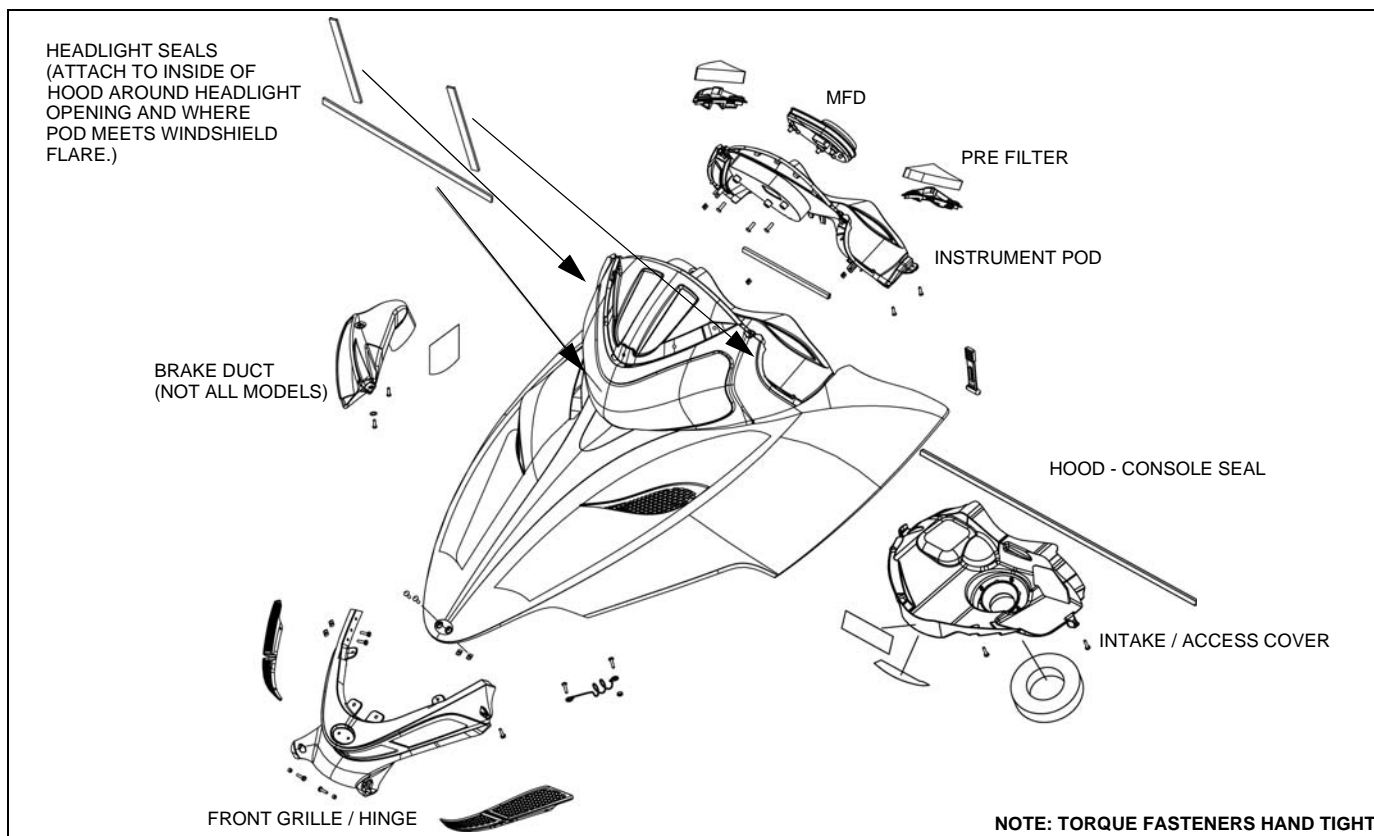


CAUTION

Pre-coated fasteners must be replaced with new parts
when removed.

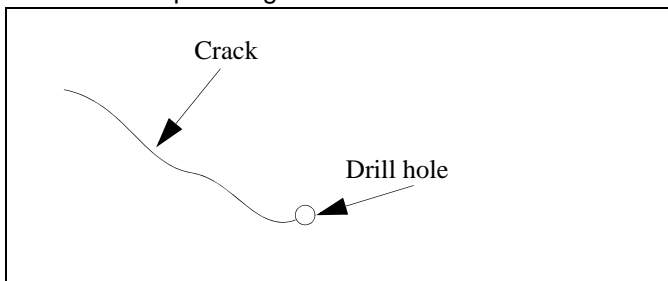
Do not over-torque steering hoop fasteners.

Hood Assembly



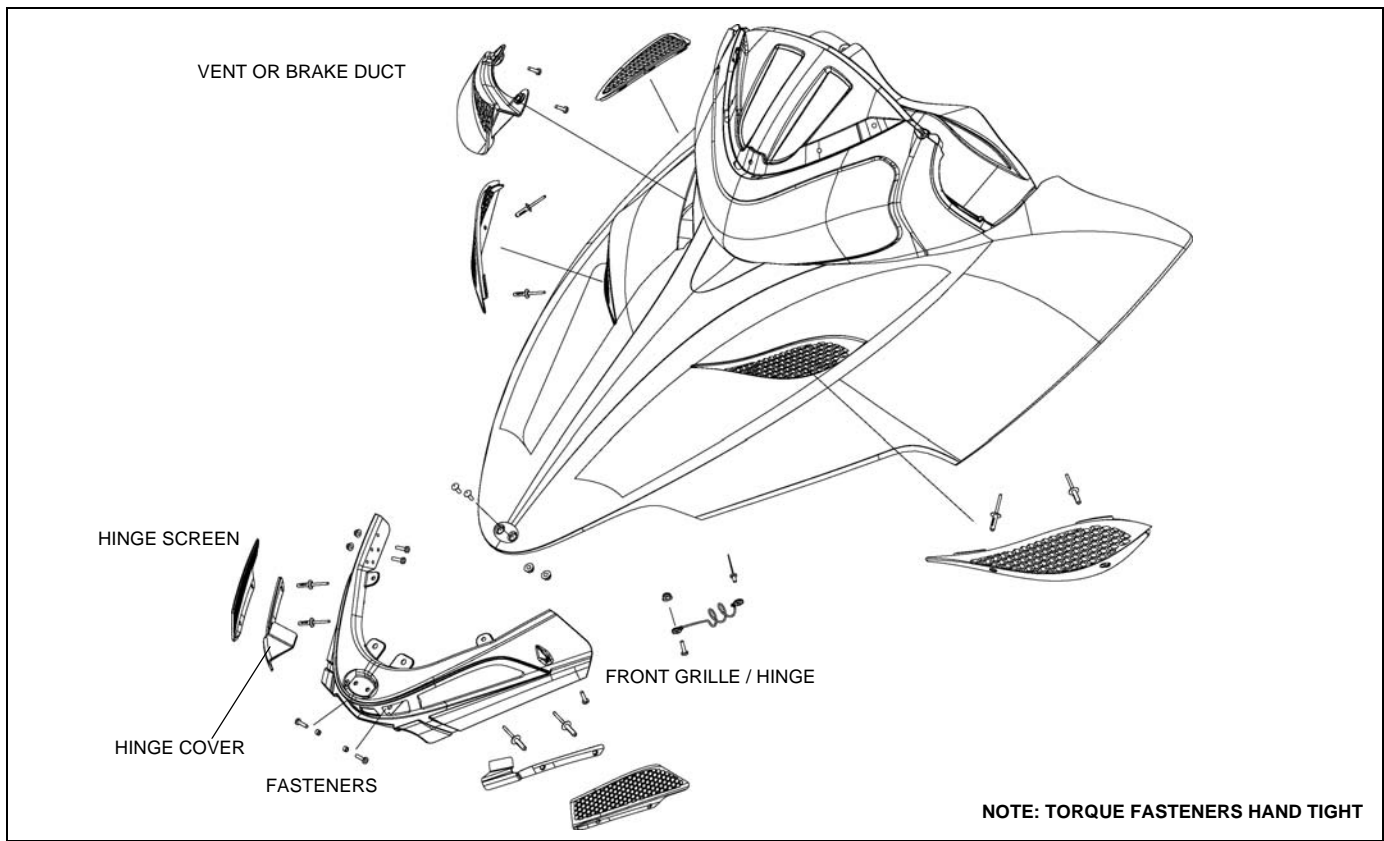
Hood / Plastic Repair

Hoods are made of Thermoplastic Olefin (TPO) and cannot be repaired. If a hood is broken it must be replaced. For small cracks, drill a small hole on both ends of the crack to limit spreading.

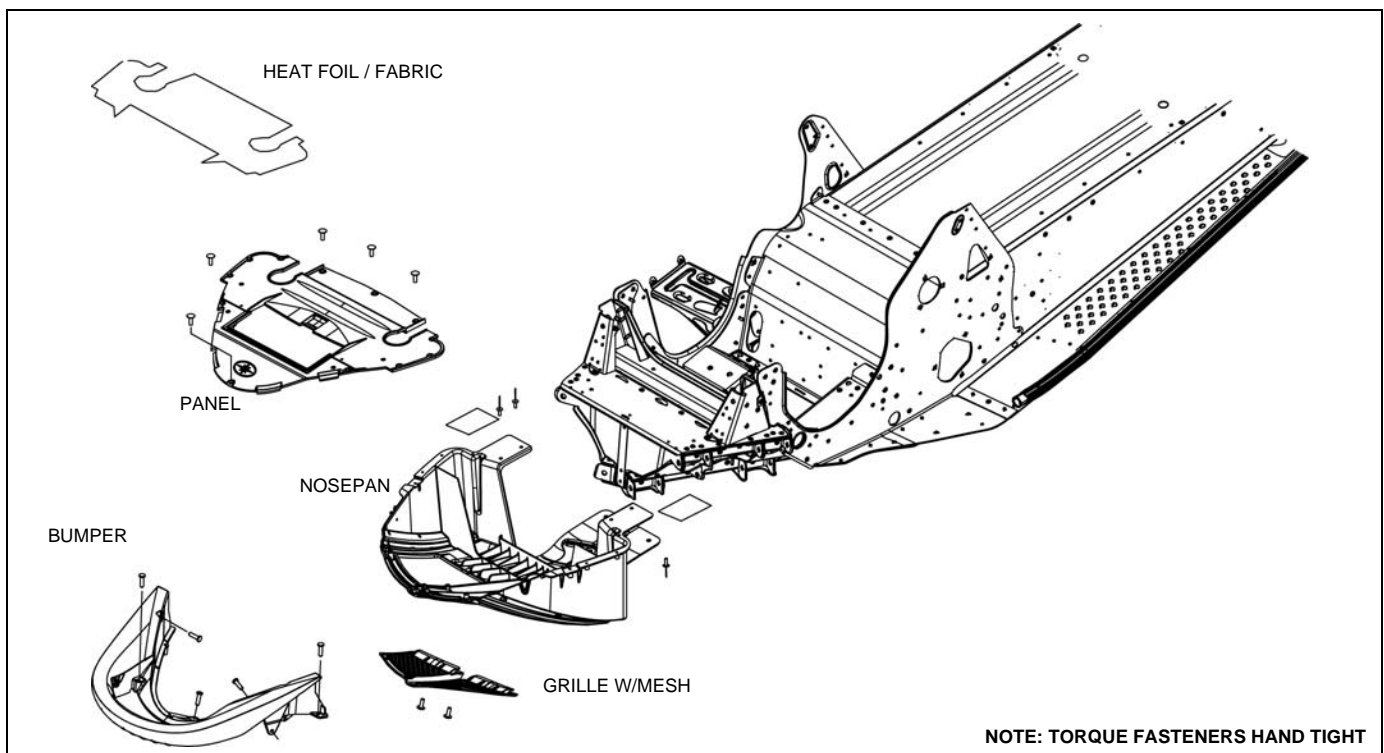


Chassis

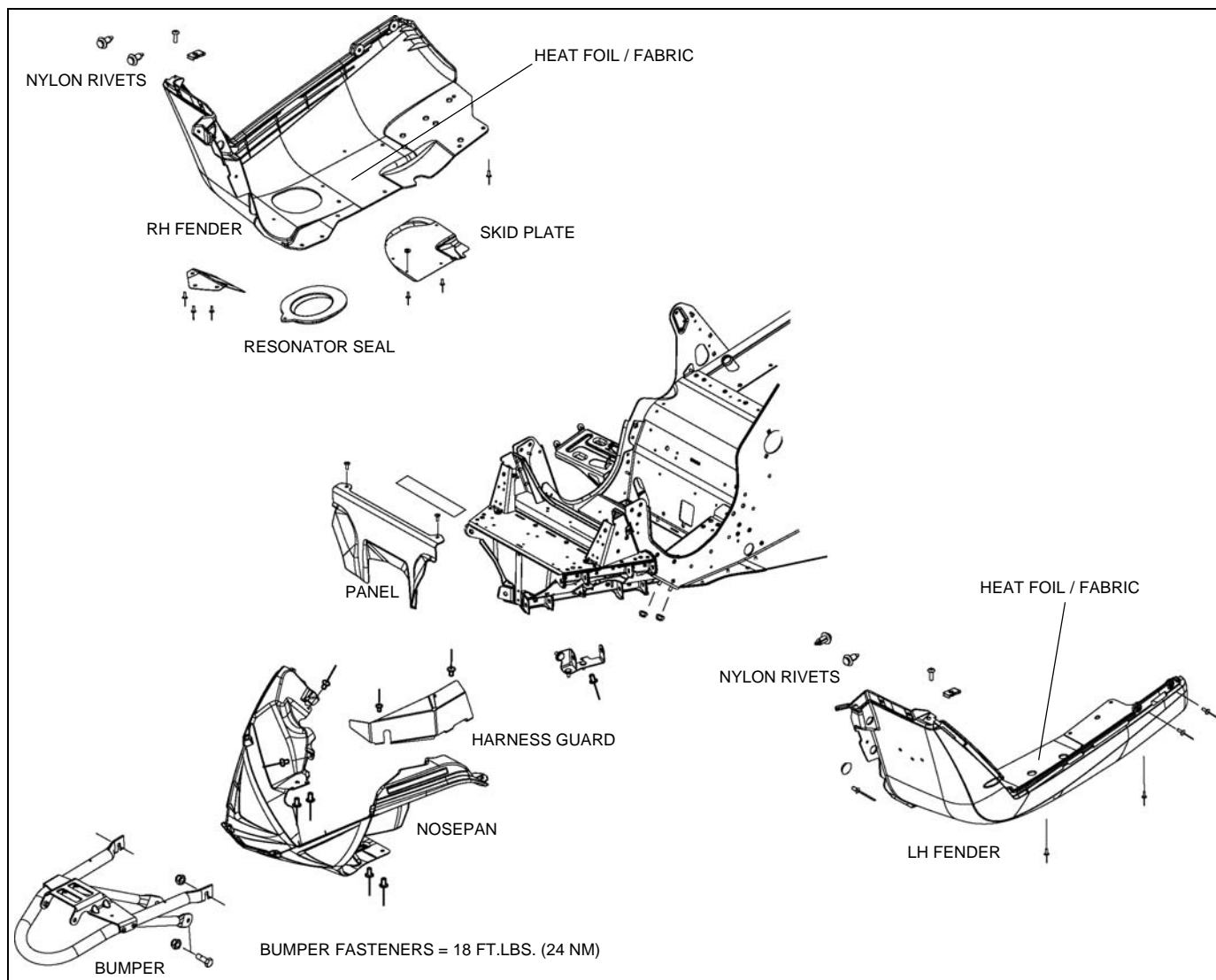
LWT Hood Hinge Assembly



Front Bumper Assembly (Typical)



LWT Front Bumper / Fenders

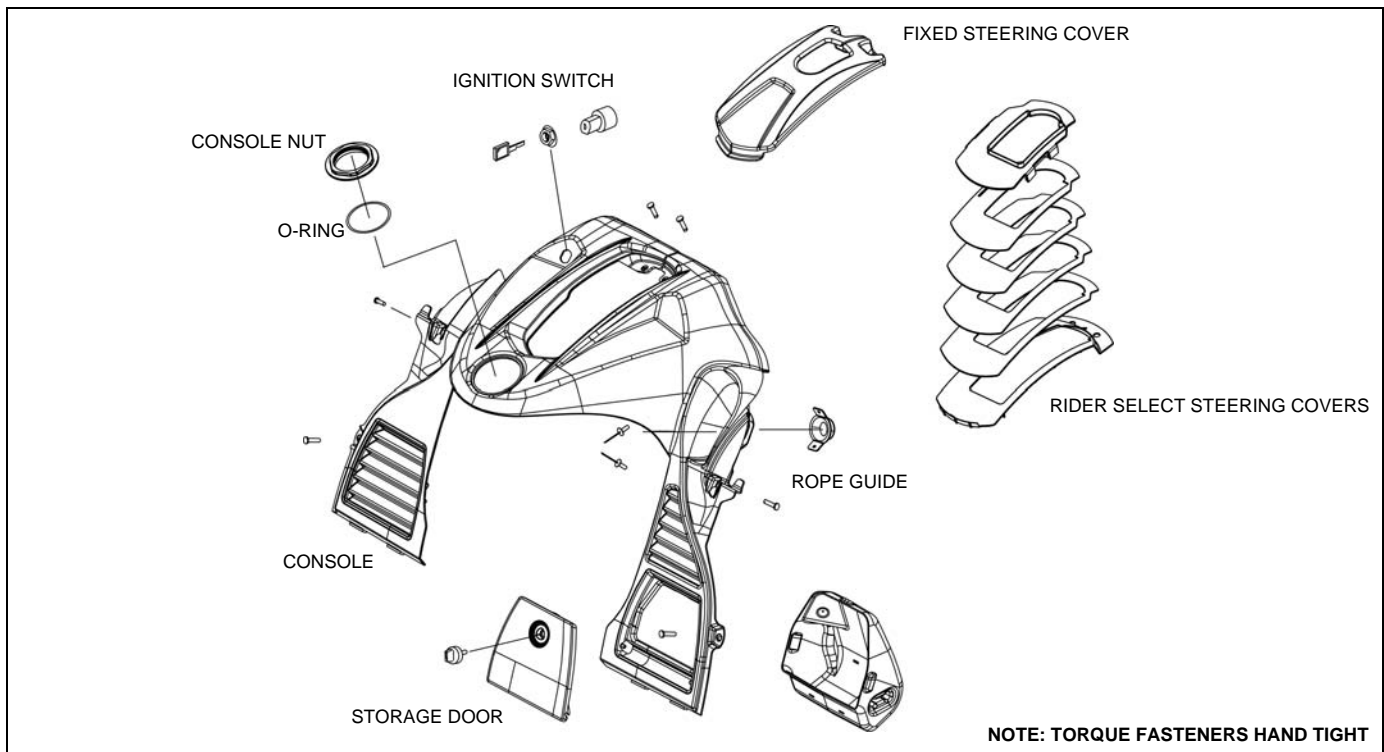


CAUTION

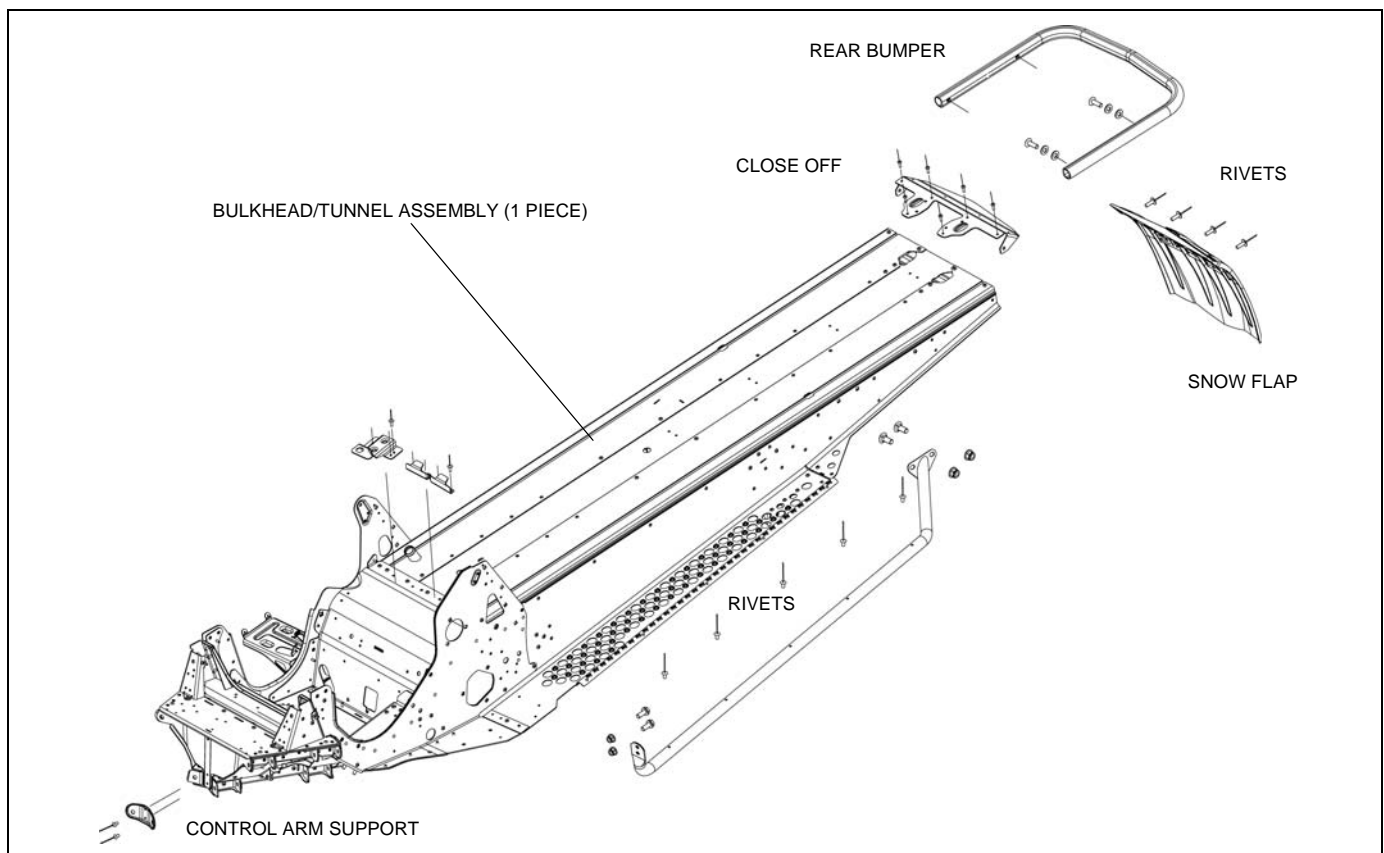
Pre-coated fasteners must be replaced with new parts when removed.

Chassis

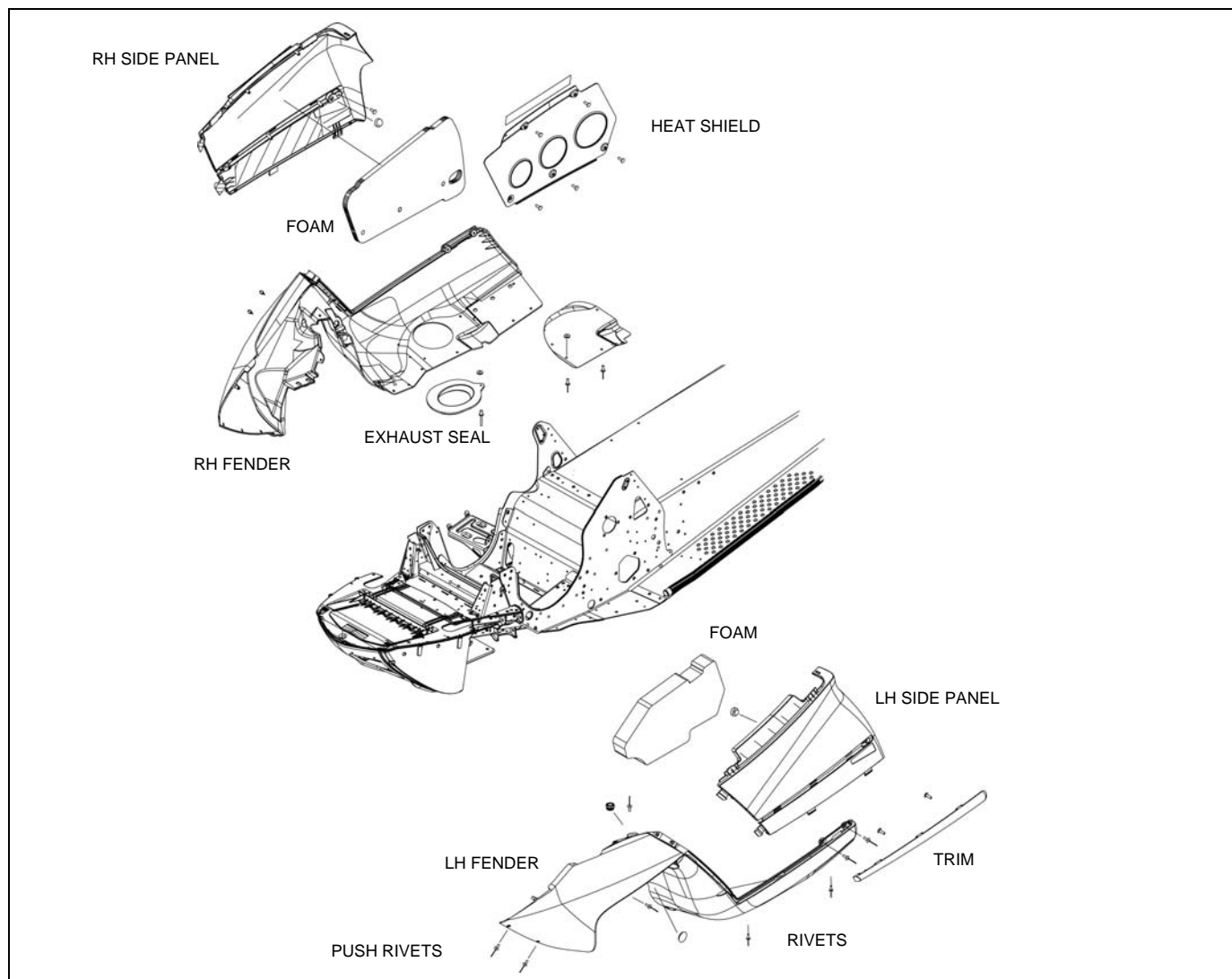
IQ Console Assembly (Typical)



RMK Tunnel

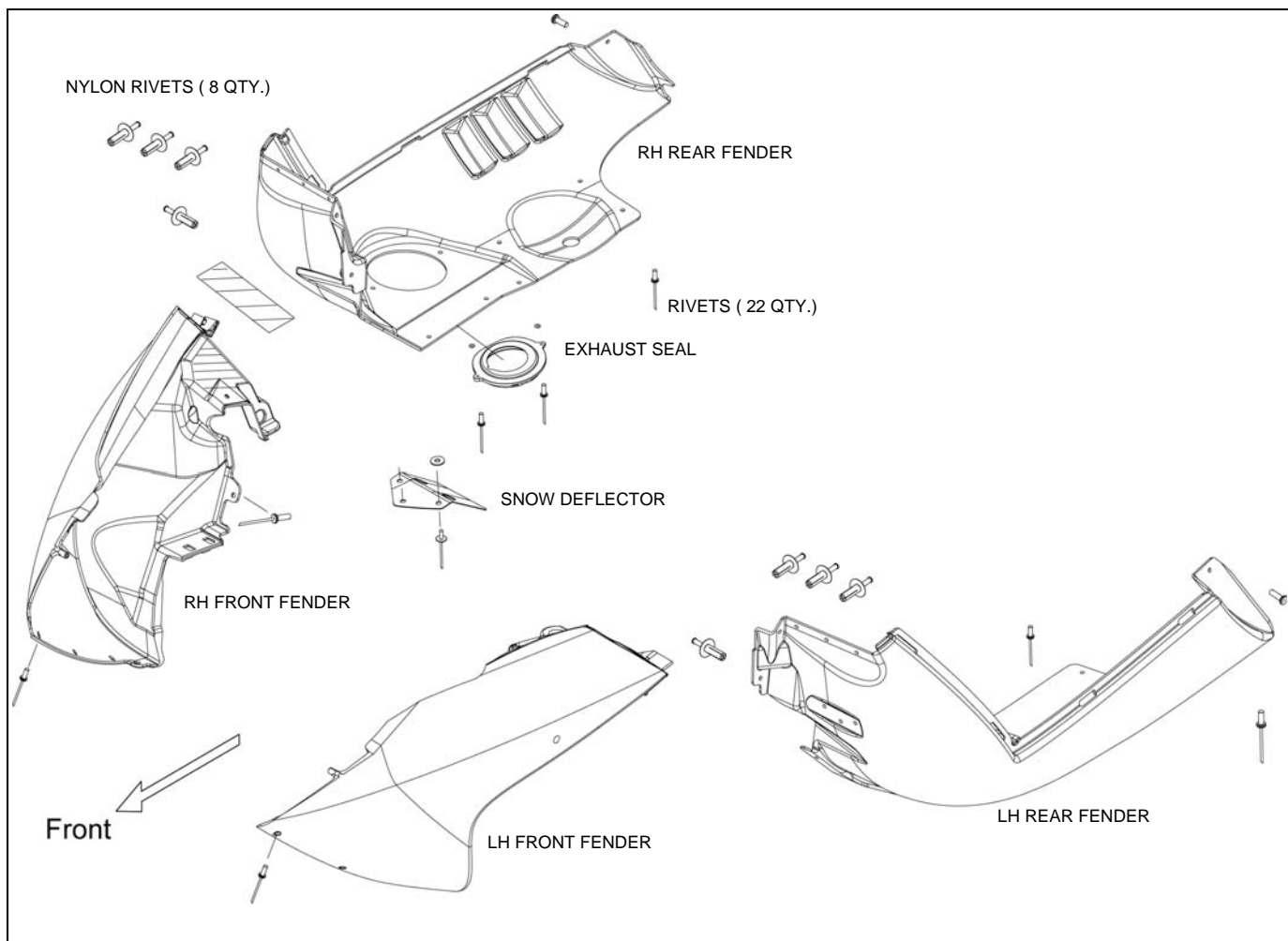


Fenders and Side Panels

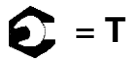
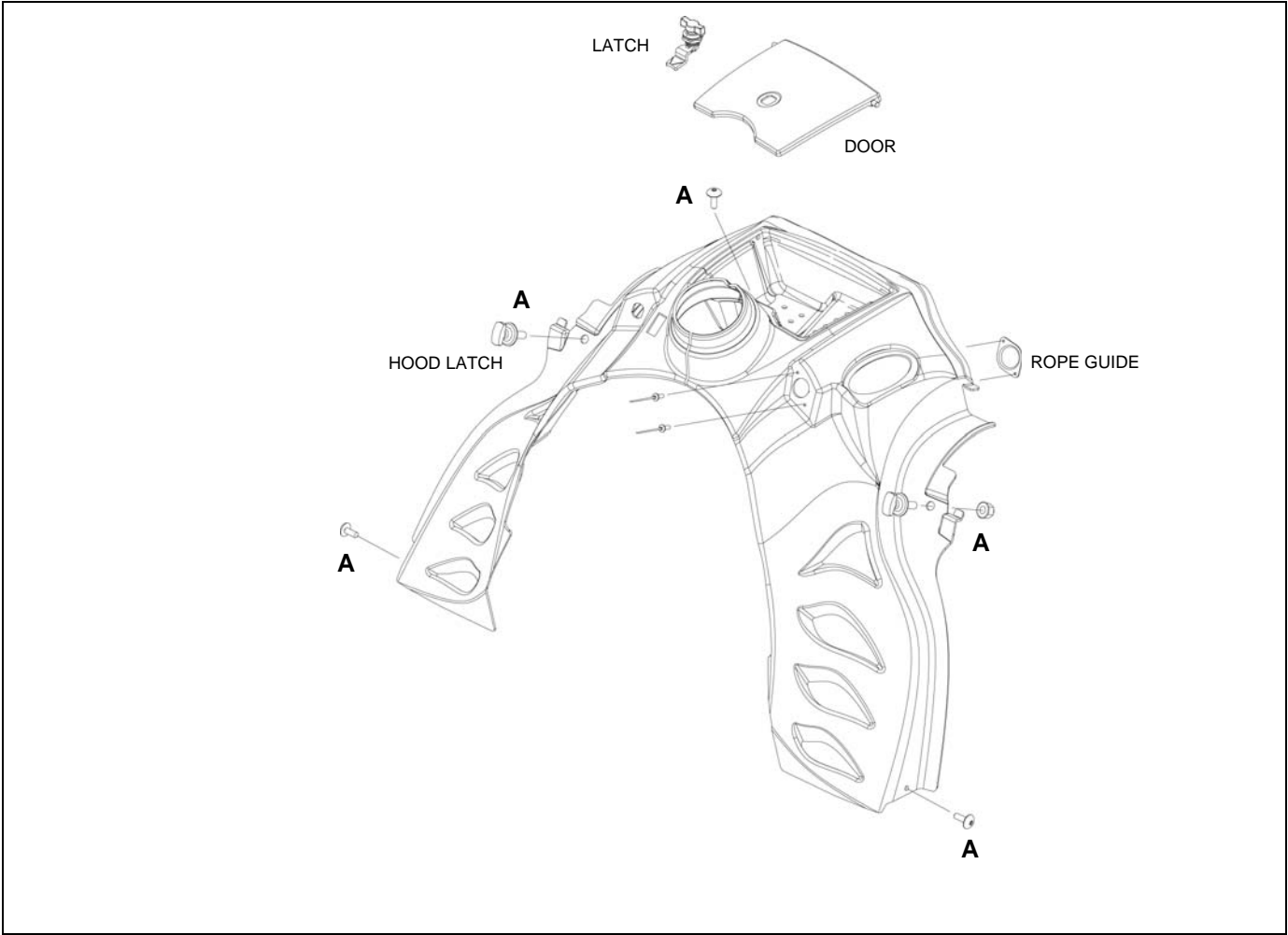


Chassis

600 Widetrak IQ Fender Assembly



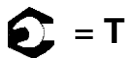
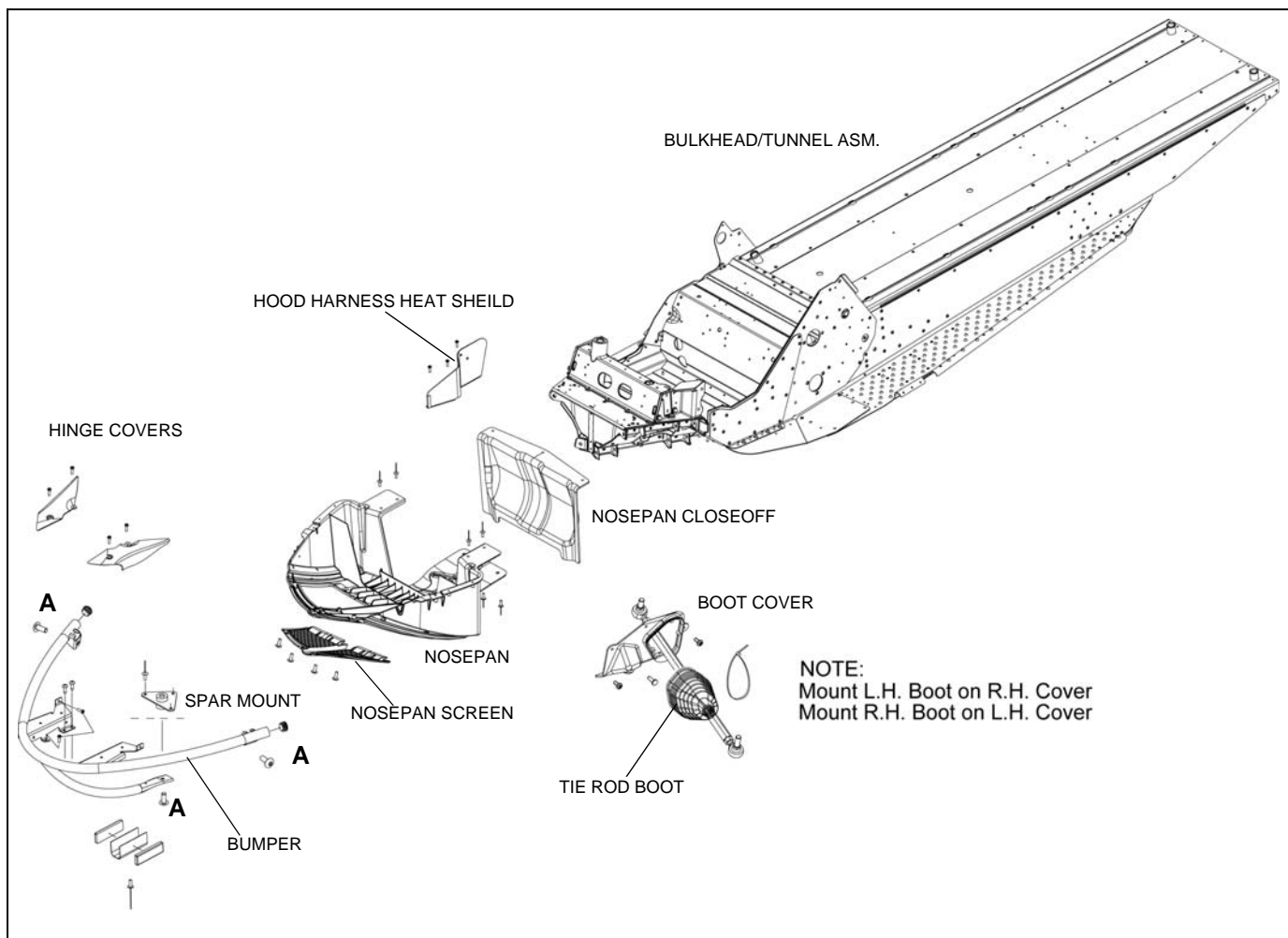
600 Widetrak IQ Console



A = 40 In.Lbs. (4.5Nm)

Chassis

600 Widetrak IQ Nosepan/Bumper Assembly



= T

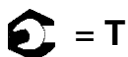
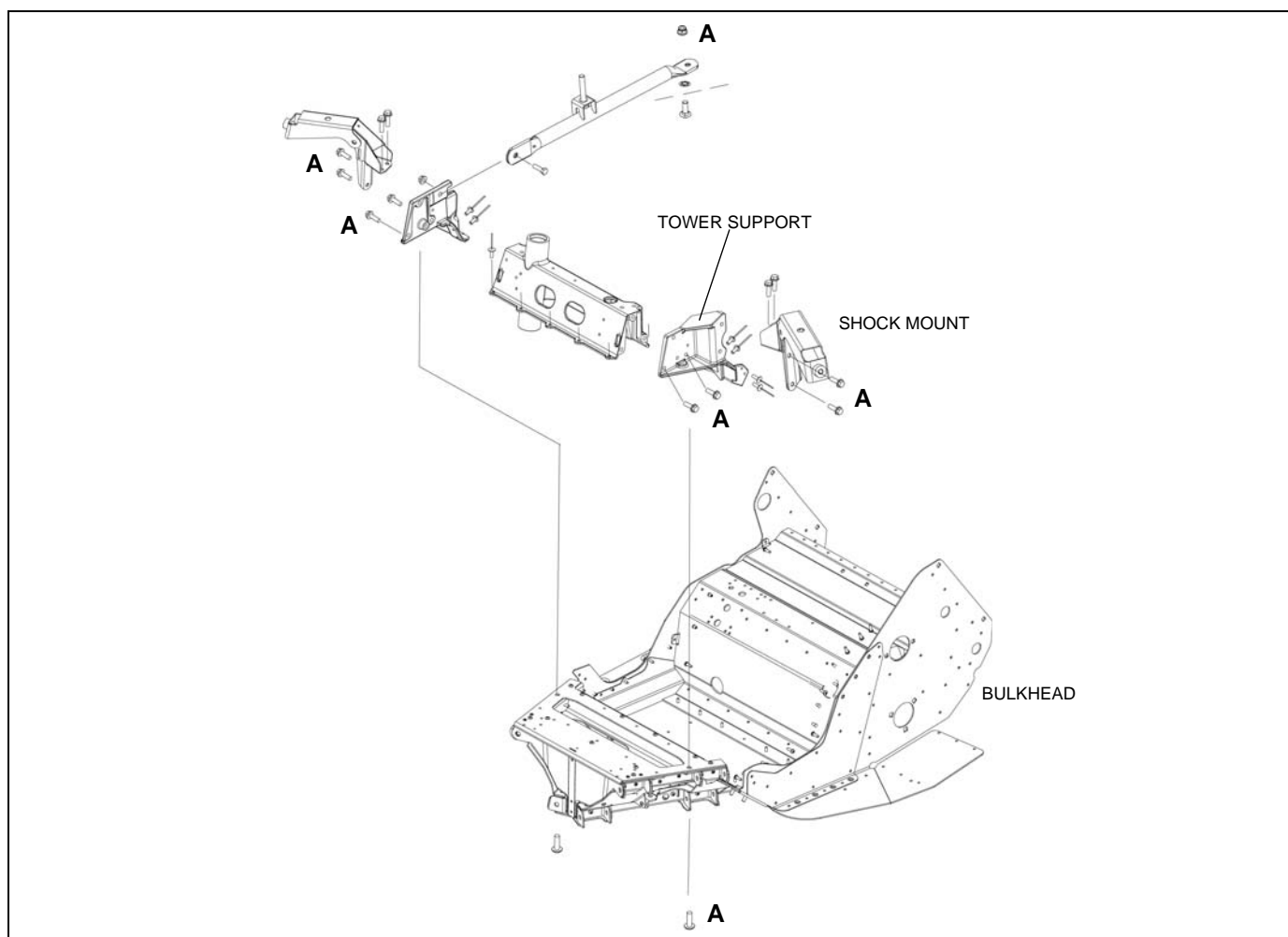
A = 25 Ft.Lbs. (38 Nm)



CAUTION

Pre-coated fasteners must be replaced with new parts when removed.

600 Widetrak IQ Shock Tower Assembly



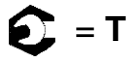
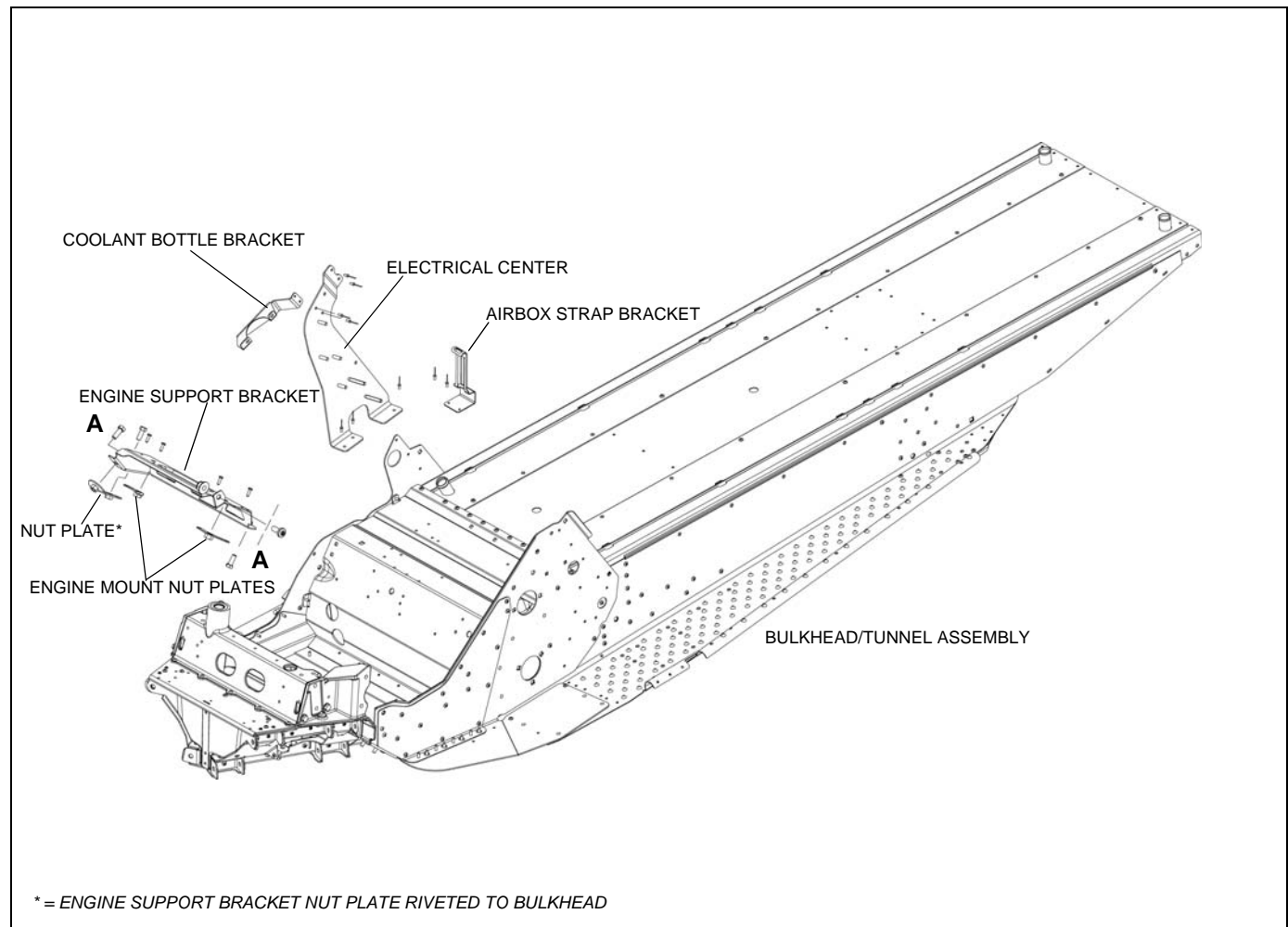
A = 22 Ft.Lbs. (30 Nm)



Pre-coated fasteners must be replaced with new parts when removed.

Chassis

600 Widetrak IQ Chassis



A = 22 Ft.Lbs. (30 Nm)

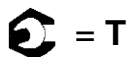
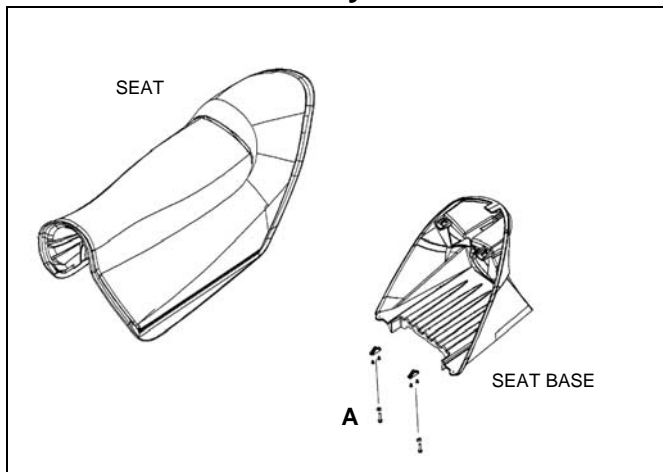


CAUTION

Pre-coated fasteners must be replaced with new parts when removed.

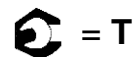
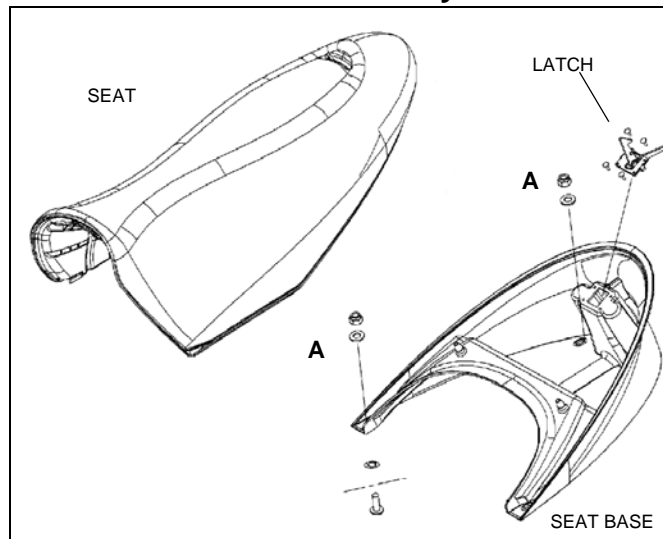
SEAT ASSEMBLIES

IQ Fixed Seat Assembly



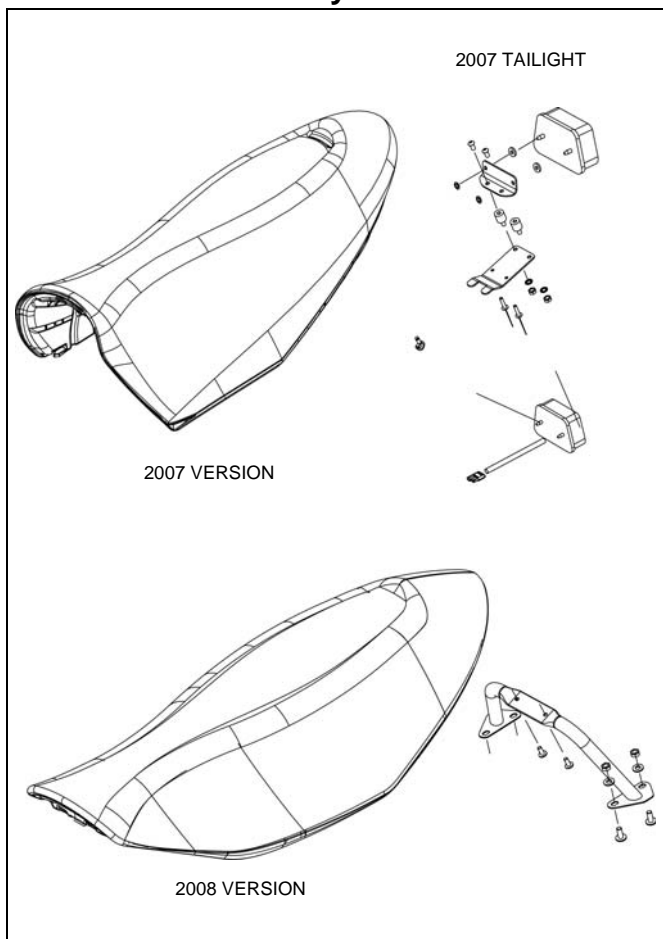
A: 5.5 Ft.Lbs. (7.5 Nm)

IQ Removable Seat Assembly



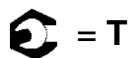
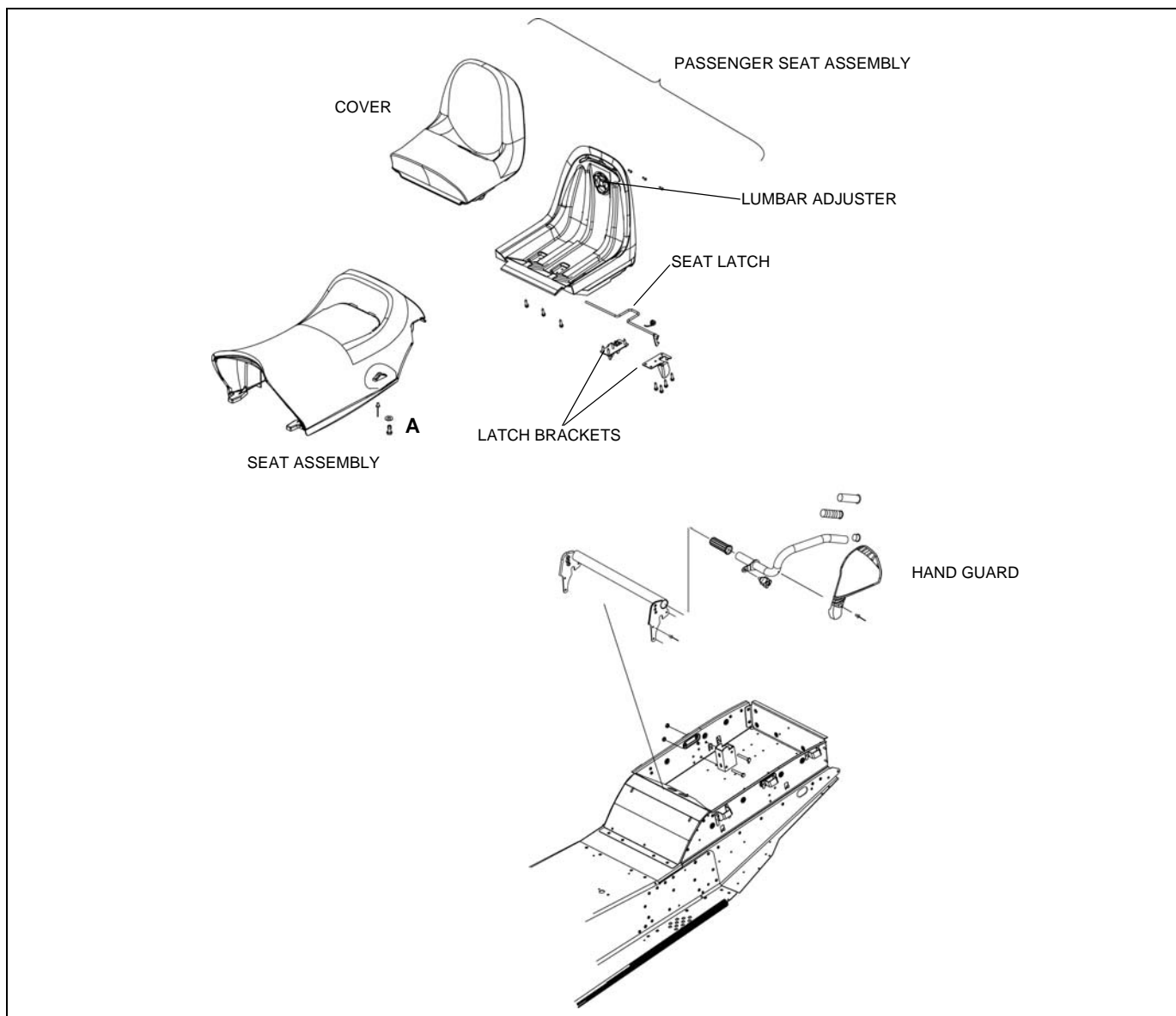
A: 5.5 Ft.Lbs. (7.5 Nm)
Plastic crushes at 10 Ft.Lbs. (13 Nm).

IQ Raw Seat Assembly



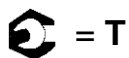
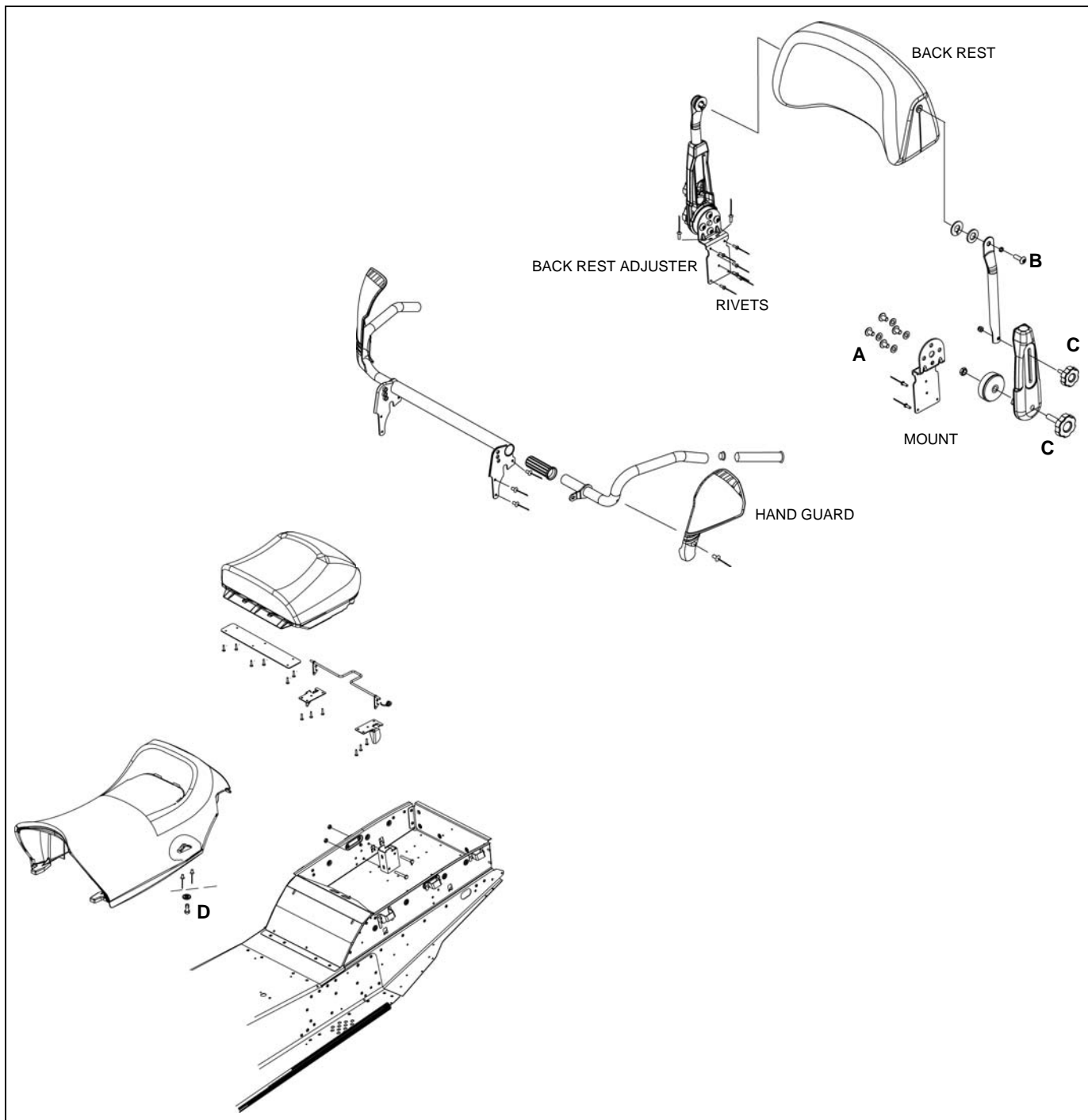
Chassis

2007 IQ Touring Seat Assembly



A: 5.5 Ft.Lbs. (7.5 Nm)

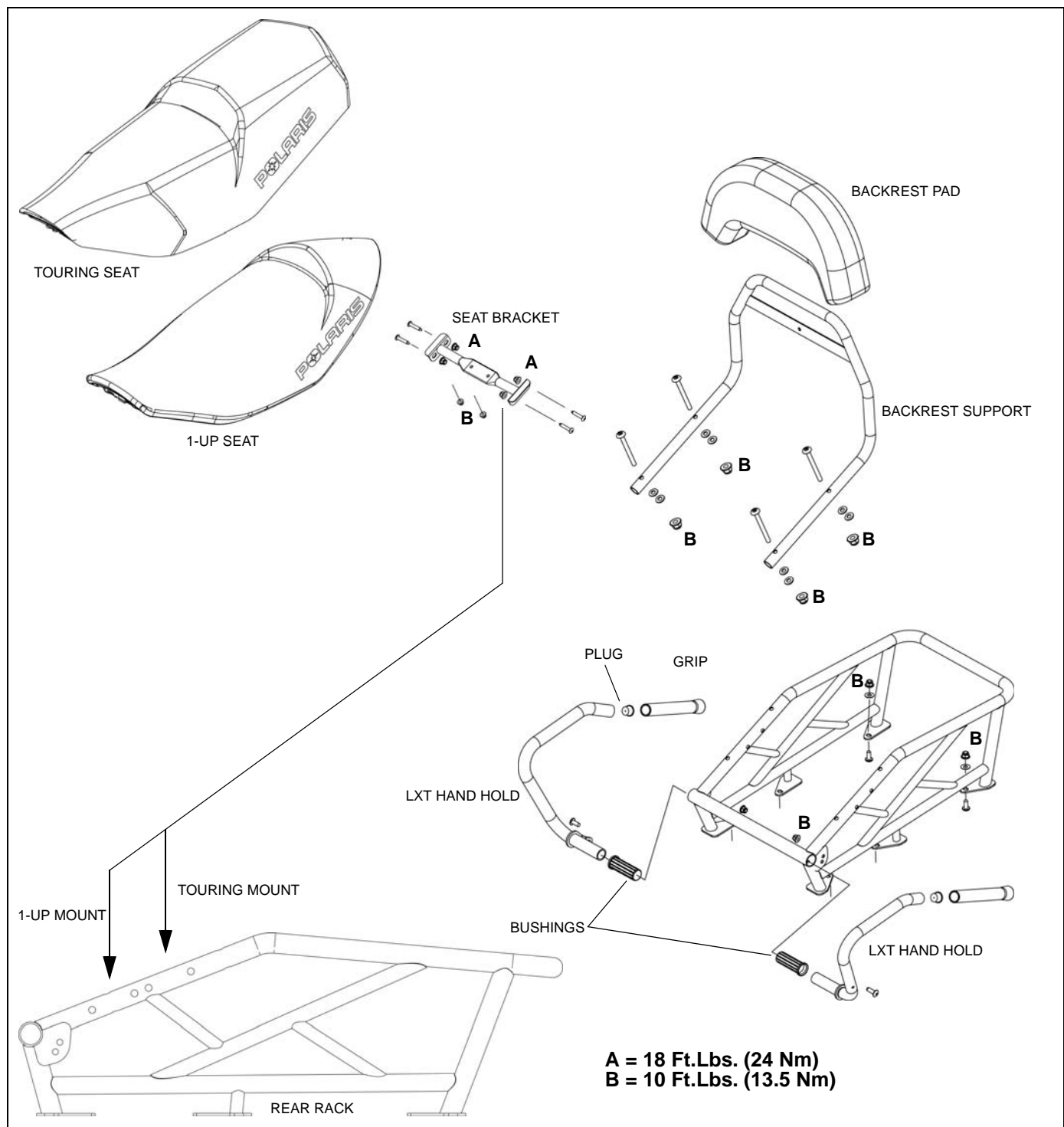
2008 IQ Touring Seat Assembly



- A: 18 Ft.Lbs. (24 Nm)
- B: Hand Tight (Do not crush washers.)
- C: Hand Tight
- D: 5.5 Ft.Lbs. (7.5 Nm)

Chassis

2011 IQ 550 136/LXT Seat and Rear Rack



Seat Cover Replacement

1. Remove seat.
2. Remove the old covering by removing the staples that hold it on the base.
3. Drape the new cover over the seat foam.
4. Turn the assembly over and begin upholstering by lining up the seat cover vinyl side flaps with the indented square location indicators located on the plastic seat base.



WARNING

Apply staples in the stapling channel only. If you apply staples outside the channel, you will damage the fuel tank reservoir in the seat base. If this happens you will have to replace the entire seat assembly.

5. Using a staple gun, tack each side of the vinyl cover in place using two staples (1). If cover has a "POLARIS" emblem carefully align emblem with the bottom edge of the seat. This will help ensure that the cover is positioned properly.
6. Align the two sewn seams located at the rear of the seat cover with the two back corners of the seat base.
7. Pull the vinyl tight and tack the seat cover to the plastic seat base in each corner. Use two or three staples per corner.
8. Now that the cover is positioned, and tacked to the plastic seat base in for places, turn the assembly over and inspect it. If the seat cover seems to fit correctly and everything looks straight, continue.
9. Staple the remainder of the unattached seat cover to the plastic seat base. Always staple between two existing staples and follow this procedure until the seat cover is completely stapled to the seat base see the staple sequence above.
10. Turn the seat cushion assembly over and inspect for wrinkles or imperfections. If imperfections are visible, remove the staples in the affected area and staple correctly.
11. Trim excess vinyl from the bottom around the back of the seat area only after a satisfactory fit is obtained.

DECALS

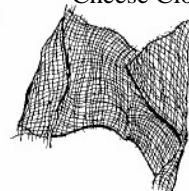
Decal Removal

Before beginning, read these instructions and check to be sure all parts and tools are accounted for.

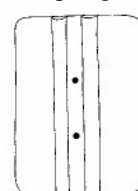
Cleaning Solution



Cheese Cloth



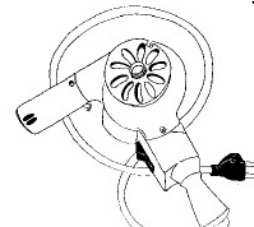
Squeegee



3M™ Cleaner



Hair Dryer



Use the following items:

- Squeegee
- Cheese Cloth or a non abrasive cloth
- Paper Shop Towels
- Hair Drier or Heat Gun
- Wallpaper seam roller or similar roller
- 3M™ citrus based clear (3M™ PN 62-4615-430-5) available at most auto parts stores
- Cleaning solution (99% water 1% mild dish washing detergent)
- Scotch® 233 Performance masking tape

Perform the decal removal procedures carefully! If care is not taken, the possibility exists that paint could peel from the hood. Follow each step thoroughly and completely to avoid hood damage! **Polaris is not responsible for any hood or paint damage resulting from this decal replacement procedure.**



CAUTION

USE SAFETY GLASSES AND RUBBER GLOVES WHEN PERFORMING THIS PROCEDURE.

Chassis

1. Using masking tape, tape off all decals that are not going to be replaced. If you do not tape off the other decals, the cleaning solution used later in the process may cause the adhesive to break down in the non-affected decals.



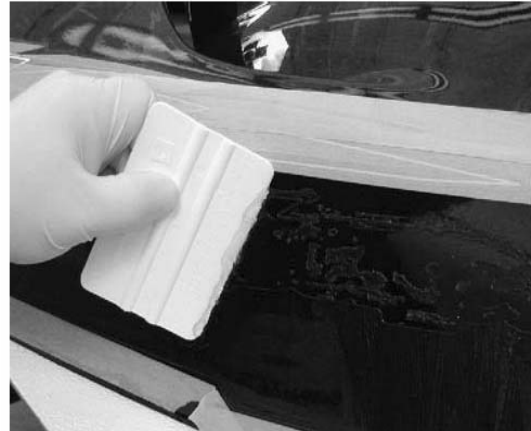
2. Using a hair dryer (preferable) or low setting on a heat gun, carefully heat the decal to loosen the adhesive. Heat until the decal is warm to touch. **DO NOT OVER HEAT! Overheating may cause damage to the paint and to the integrity of the hood.** Polaris is not responsible for any hood damage resulting from this decal replacement procedure.
3. Once the decal is warm to touch and the adhesive is loose, peel the decal off slowly and evenly. **Use of a hair dryer or heat gun is required!** If heat is not applied, the decal will be very hard to remove and paint from the hood may peel off with the decal.
4. After the decal is removed, apply 3M™ citrus based cleaner to the decal area to remove the adhesive. Be sure to follow the instructions and the precautions on the container, and use rubber gloves and safety glasses. Spray the cleaner on the adhesive and let set for 15-20 seconds. Using a squeegee, wipe the adhesive from the hood and deposit it in a paper shop towel. You may have to repeat this process several times to remove all of the adhesive from the hood. Use care not to get the cleaner on any other decals.



5. When the bulk of the adhesive is removed from the hood by using the squeegee, remove any left over

residue with a clean, non-abrasive shop towel or cheese cloth that is wet with the 3M™ cleaner.

6. Once all of the adhesive is removed from the decal area, follow with a cleaning solution of 99% water to 1% mild dishwasher detergent. Use a non-abrasive cloth with the solution to remove dirt, grease, cleaning solvent, and finger prints. Always clean the surface where the decal will be applied.



CAUTION

It is extremely important to remove all traces of dirt and debris from the hood where the decal is to be applied. Left over debris will be magnified through the chrome decals.

Decal Installation

All decals should be applied indoors, free from dust, dirt, cold air, and humidity. Room temperature must be between 40° and 100°F (4 - 38°C). These decals are to be applied dry.

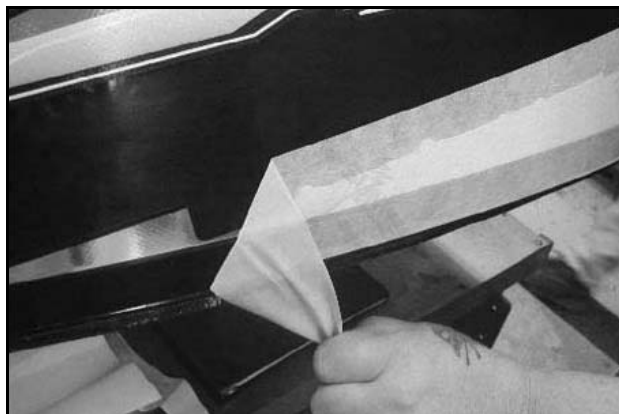
1. Make sure the surface area of the hood where the decal is to be placed is free of any dirt, debris, or adhesive.



2. Place the decal in the area to be installed and make sure that everything lines up properly.
3. Carefully peel away the adhesive side of the decal.
4. Apply the decal and slowly work the decal down using a clean squeegee to lay the decal straight and to avoid creating air bubbles. Do NOT remove the decal mask until the decal is fully applied.



5. When finished installing the decal, carefully remove the decal mask at a 180° angle.



6. Peel the backing off and install the urocal in the appropriate places. These also have strong adhesives and once applied they cannot be removed easily. Use a wall paper roller to adhere all surfaces of the urocal. Urocal decals are rigid and need to be rolled to ensure good adhesion, particularly on the edges.

CAUTION

ONCE THE ADHESIVE STICKS, IT CAN BE VERY DIFFICULT TO PULL THE DECAL BACK OFF OF THE HOOD. USE EXTREME CARE! IF YOU ENCOUNTER AIR BUBBLES DO NOT ATTEMPT TO USE A STRAIGHT PIN TO POKE THE BUBBLE AND LET THE AIR OUT. A HOLE POKED IN A CHROME DECAL WILL BE VERY NOTICEABLE.

This image shows a blank sheet of white paper with horizontal ruling lines. The lines are evenly spaced and run across the width of the page. There are no margins, text, or other markings on the paper.