



INSTRUCTIONS

-J03402

REV. 2005-10-14

SADDLEBAG FENDER SUPPORT BRACKET KIT

GENERAL

Kit Number

68375-03

Models

This kit fits 2004 FXSTDSE2 model motorcycles. This kit also fits 2000 and later FXSTD model motorcycles equipped with a FXSTD Wide Tire Kit (44075-04). This kit is designed to be used in conjunction with the Deuce Leather Saddlebag Kit (90404-00), Deuce Saddlebag Support Kit (68360-00), and the Directional Relocation Kit (90395-00).

Additional Parts Required

WARNING

The rider's safety depends upon the correct installation of this kit. Use the appropriate service manual procedures. If the procedure is not within your capabilities or you do not have the correct tools, have a Harley-Davidson dealer perform the installation. Improper installation of this kit could result in death or serious injury. (00333a)

NOTE

This instruction sheet references Service Manual information. A Service Manual for your model motorcycle is required for this installation and is available from a Harley-Davidson Dealer.

Kit Contents

- (1) Fender Support Bracket, Right Side (56801-04)
- (2) Screw, Hex head, 3/8-16 (4468)

INSTALLATION

Installation Information

If your motorcycle is an FXSTDSE2 or an FXSTD with a FXSTD Wide Tire Kit installed and you are installing a Softail Deuce Leather Saddlebag Kit, then follow the steps in the "FXSTDSE2 Models and Models with Wide Tire Kit Installed" section of this instruction sheet.

If your motorcycle is an FXSTD with a Softail Deuce Leather Saddlebag Kit installed and you are installing a FXSTD Wide Tire Kit, then follow the steps in the "FXSTD with Saddlebag Support Kit Installed" section of this instruction sheet.

If you are installing both a FXSTD Wide Tire Kit and a Softail Deuce Leather Saddlebag Kit, then follow the steps in the "FXSTD with Neither Saddlebag Support Kit nor Wide Tire Kit Installed" section of this instruction sheet.

FXSTDSE2 Models and Models with Wide Tire Kit Previously Installed

WARNING

To prevent accidental vehicle start-up, which could cause death or serious injury, disconnect negative (-) battery cable before proceeding. (00048a)

NOTE

See Figure 1 for the following procedure.

1. Refer to the appropriate Service Manual and disconnect the battery negative (-) cable.
2. Refer to the appropriate Service Manual and remove the rear wheel to allow ample space to install kit.
3. Refer to the appropriate Service Manual and remove the rear turn signals and mounts.
4. Loosen two screws (4) on right side of motorcycle.
5. Remove three nuts (10), two screws (9), two washers (6) and existing right side rear fender bracket (7). Save the hardware and discard the bracket.
6. Install the right side fender support bracket (1) from the kit using the hardware removed in the previous step. Tighten the nuts to 12-15 ft-lbs (16-20 Nm). Tighten the screws to 12-15 ft-lbs (16-20 Nm).
7. Tighten two screws (4) to 14-16 ft-lbs (19-21 Nm).
8. Slide two screws (2), from the inside of the fender, through the spacer tubes on the right side fender support bracket (1). Install two nylon lock nuts (8) and washers (12) from the Saddlebag Support Kit loosely to the screws.
9. Install the Softail Deuce Leather Saddlebag Kit and Turn Signal Relocation Kit according to the Instruction Sheet (-J01910). However, when installing the Saddlebag Support Kit (68360-00), **DO NOT** install the right side fender support (68362-00) or its mounting hardware. Mount the right side saddlebag support plate to the right side saddlebag support installed in this instruction sheet (-J03402). Remove loosely installed washers (12) and nuts (8) before installing saddlebag support plate.
10. Refer to the appropriate Service Manual and install the rear wheel.
11. Refer to the appropriate Service Manual and connect the battery negative (-) cable.

FXSTD with Saddlebag Support Kit Previously Installed

WARNING

To prevent accidental vehicle start-up, which could cause death or serious injury, disconnect negative (-) battery cable before proceeding. (00048a)

NOTE

See Figure 2 for the following procedure.

1. Refer to the appropriate Service Manual and disconnect the battery negative (-) cable.
2. Remove the right side saddlebag and saddlebag support plate.
3. Refer to the appropriate Service Manual and remove the rear wheel to allow ample space to install kit.
4. Remove and discard two flange lock nuts (4) and saddlebag fender support (6), then remove two carriage bolts (5) from the stock fender support bracket (7) key hole slots.
5. Remove two screws (3) and two washers (2). Save for later installation.
6. Loosen two screws (12) and the turn signal mounting screw to allow access to screw (17), washer (16) and stud plate (14).
7. Remove and discard screw (17) and washer (16).
8. Remove and discard two nuts (9), stock fender support bracket (7) and stock stud plate (14).
9. Obtain stud plate (15) and three 5/16-18 flanged nuts (18) from the Wide Tire Kit. Obtain the fender support bracket (10) from this kit.
10. Install the stud plate (15) into the fender, then install the fender support bracket (10) and three nuts (18) to the rear fender (1) and stud plate, as shown, two from the inside and one from the outside.
11. Install two screws (3) and washers (2), removed in Step 5. Tighten the screws to 12-15 ft-lbs (16-20 Nm).
12. Tighten the nuts (18) to 12-15 ft-lbs (16-20 Nm).
13. Tighten two screws (12) to 14-16 ft-lbs (19-21 Nm).
14. Tighten the turn signal mounting screw to 8-10 ft-lbs (11-13 Nm).
15. Slide two screws (8) through the spacer tubes on the right side fender support bracket (10). Install two nuts (11) and washers (19) loosely to the screws to hold in place.
16. Install the FXSTD Wide Tire Kit according to the Instruction Sheet (-J03100) included with that kit. However, when installing the FXSTD Wide Tire Kit (44075-00), **DO NOT** install the right side fender support (56800-04) or its mounting hardware (except the stud plate and nuts, which were previously installed in this Instruction Sheet (-J03402)).
17. Refer to the Instruction Sheet (-J01910) included with the Softail Deuce Leather Saddlebag Kit and mount the right side saddlebag support plate and saddlebag to the right side saddlebag support bracket installed in this instruction

sheet (-J03402). Remove loosely installed washers and nuts before installing saddlebag support plate.

18. Refer to the appropriate Service Manual and connect the battery negative (-) cable.

FXSTD with Neither Saddlebag Support Kit nor Wide Tire Kit Previously Installed

WARNING

To prevent accidental vehicle start-up, which could cause death or serious injury, disconnect negative (-) battery cable before proceeding. (00048a)

NOTE

See Figure 3 for the following procedure.

1. Refer to the appropriate Service Manual and disconnect the battery negative (-) cable.
2. Refer to the appropriate Service Manual and remove the rear wheel to allow ample space to install kit.
3. Refer to the appropriate Service Manual and remove the rear turn signals and mounts.
4. Remove two screws (3) and two washers (2). Save for later installation.
5. Loosen two screws (9) to allow access to screw (15), washer (16) and stock stud plate (11).
6. Remove and discard screw (15) and washer (16).
7. Remove and discard two nuts (4), stock fender support bracket (6) and stock stud plate (11).
8. Obtain stud plate (12) and three 5/16-18 flange nuts (13) from the Wide Tire Kit. Obtain the fender support bracket (7) from this kit.
9. Install the stud plate (12) into the fender, then install the fender support bracket (7) and three nuts (13) to the rear fender (1) and stud plate, as shown, two from the inside and one from the outside.
10. Install two screws (3) and washers (2), removed in Step 4. Tighten the screws to 12-15 ft-lbs (16-20 Nm).
11. Tighten the nuts (13) to 12-15 ft-lbs (16-20 Nm).
12. Tighten two screws (9) to 14-16 ft-lbs (19-21 Nm).
13. Slide two screws (5) through the spacer tubes on the right side fender support bracket (7). Install two nuts (8) and washer (14) loosely to the screws to hold in place.
14. Install the Turn Signal Relocation Kit (90395-00) and Saddlebag Support Kit (68360-00) according to the Instruction Sheet (-J01910). However, when installing the Saddlebag Support Kit, **DO NOT** install the right side fender support (68362-00) or its mounting hardware. Mount the right side saddlebag support plate to the right side saddlebag support installed in this instruction sheet (-J03402). Remove loosely installed washers and nuts before installing saddlebag support plate.
15. Install the FXSTD Wide Tire Kit according to the Instruction Sheet (-J03100) included with that kit. However, when installing the FXSTD Wide Tire Kit (44075-00), **DO NOT** install the right side fender support (56800-04) or its mounting hardware (except the stud plate and nuts, which

were previously installed in this Instruction Sheet (-J03402)).

16. Install the Leather Saddlebags (90404-00) according to the Instruction Sheet (-J01910) included with the Softail Deuce Leather Saddlebag Kit.

17. Refer to the appropriate Service Manual and connect the battery negative (-) cable.

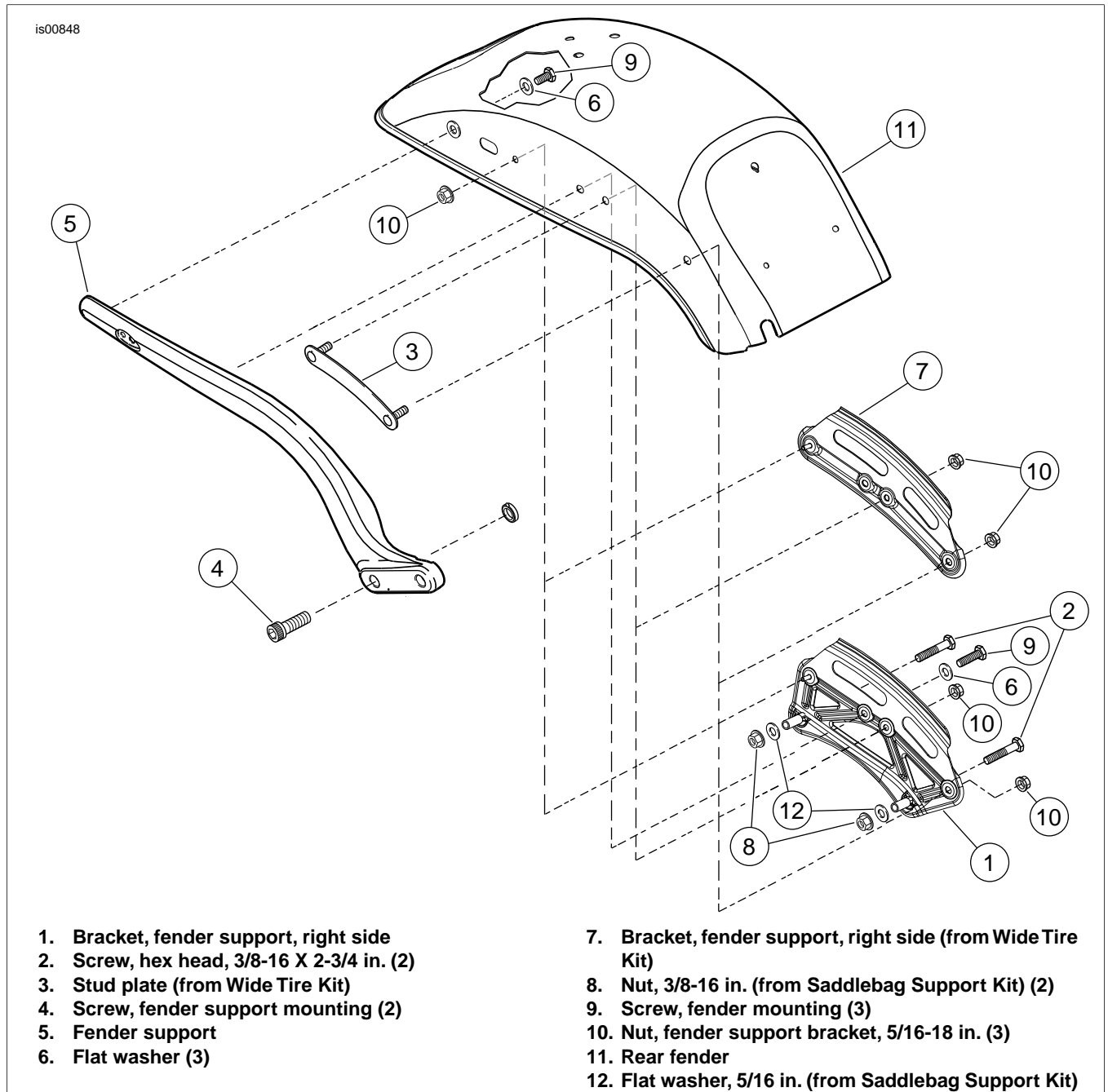
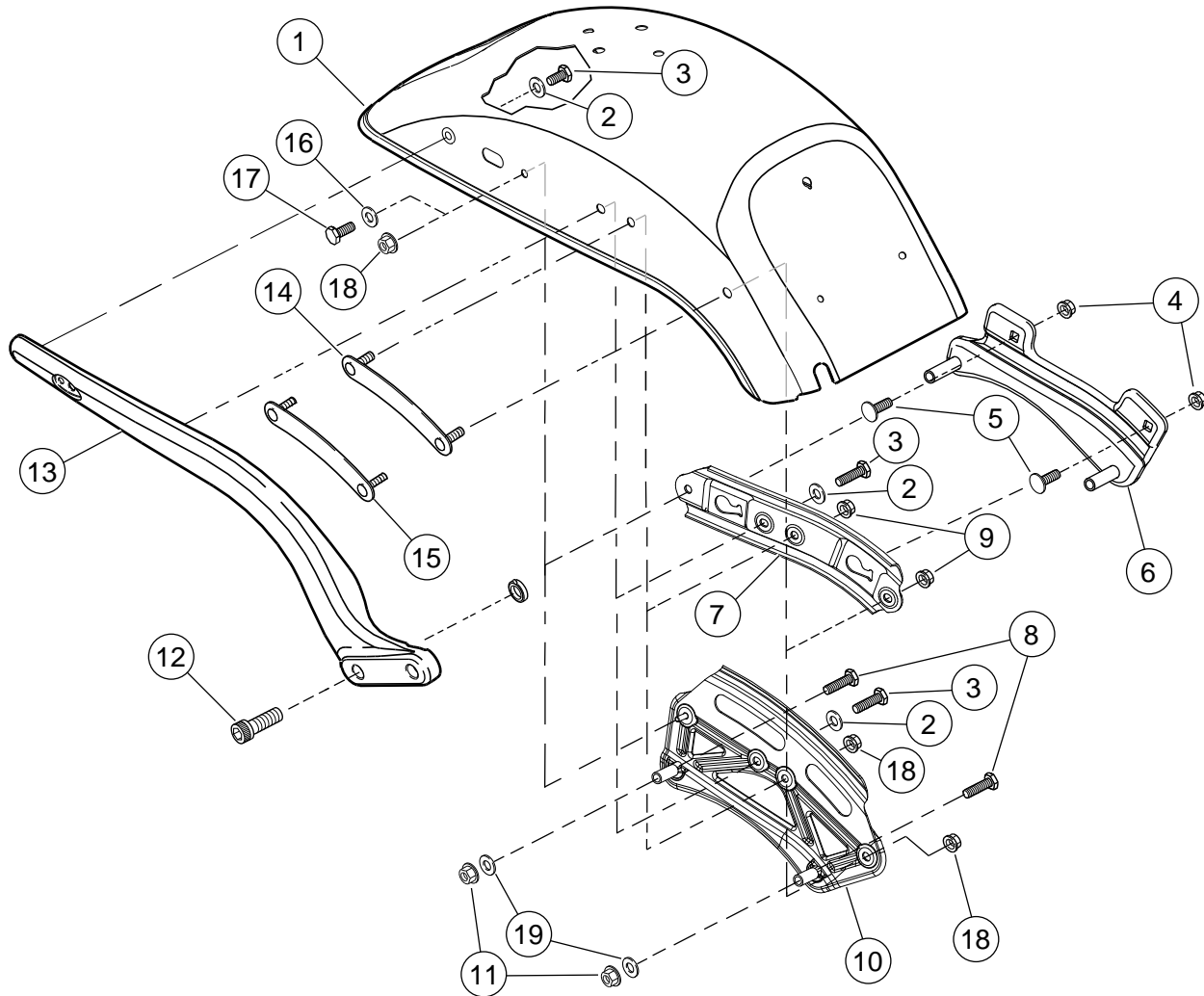
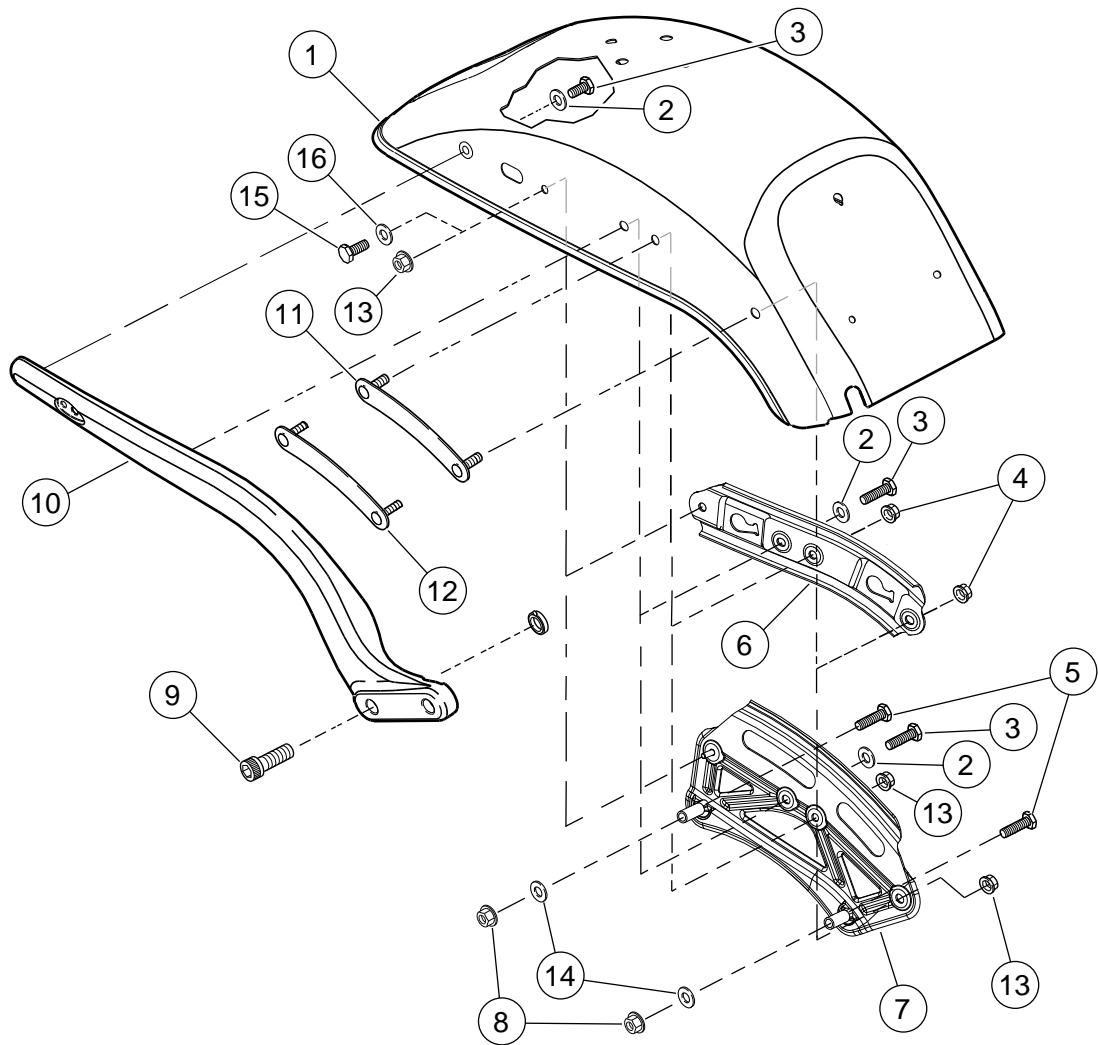


Figure 1. FXSTDSE2 or FXSTD with Wide Tire Kit Previously Installed (Installing Saddlebag Support Kit)



- | | |
|---|---|
| 1. Rear fender | 11. Nylon lock nut, 3/8-16 in. (from Saddlebag Support Kit) (2) |
| 2. Stock flat washer, 5/16 in. (2) | 12. Screw, fender support mounting (2) |
| 3. Stock fender mounting screw, 5/16-18 in. (2) | 13. Fender support |
| 4. Flange lock nut (from Saddlebag Support Kit) (2) | 14. Stud plate (stock) |
| 5. Carriage screw (from Saddlebag Support Kit) (2) | 15. Stud plate (from Wide Tire Kit) |
| 6. Saddlebag fender support, right side | 16. Flat washer, 5/16 in. |
| 7. Stock fender support bracket, right side | 17. Fender mounting screw, 5/16-18 in. |
| 8. Screw, hex head, 3/8-16 X 2-3/4 in. (2) | 18. Nut, 5/16-18 in. (from Wide Tire Kit) (3) |
| 9. Stock fender support bracket nut, 3/8-16 in. (2) | 19. Flat washer, 5/16 in. (from Saddlebag Support Kit) |
| 10. Bracket, fender support, right side | |

Figure 2. FXSTD with Saddlebag Support Kit Previously Installed (Installing Wide Tire Kit)



- | | |
|--|---|
| 1. Rear fender | 9. Screw, fender support mounting (2) |
| 2. Stock flat washer, 5/16 (2) | 10. Fender support |
| 3. Stock fender mounting screw, 5/16-18 (2) | 11. Stock stud plate |
| 4. Stock fender support bracket nut, 3/8-16 in. (2) | 12. Stud plate (from Wide Tire Kit) |
| 5. Screw, hex head, 3/8-16 X 2-3/4 in. (2) | 13. Flange lock nut, 5/16-18 in. (from Wide Tire Kit) (3) |
| 6. Fender support bracket, stock, right side | 14. Flat washer, 5/16 in. (from Saddlebag Support Kit) |
| 7. Bracket, fender support, right side | 15. Stock flat washer, 5/16-18 |
| 8. Nylon lock nut, 3/8-16 (from Saddlebag Support Kit) (2) | 16. Stock fender mounting screw, 5/16-18 |

Figure 3. FXSTD with Neither Wide Tire Kit Nor Saddlebag Support Kit Previously Installed (Installing Both Wide Tire Kit and Saddlebag Support Kit)