



Quick Start Guide

For All TerraTrike Models



Table of Contents

1. Online Resources
Unpacking
Survival Tips
2. Adjusting Your Trike
Seat Adjustment
3. Handlebar Adjustment
Boom Adjustment
4. How to Ride
Maintenance of Your
TerraTrike
5. Warranty
Liability Waiver



Lubrication

Your chain and cables need regular lubrication with a good quality bike lube to reduce wear and maintain proper operation. Keep these parts clean and lubed.

Brakes/Shifters

Brake cables and shift cables will stretch during the initial break-in period of your TerraTrike. To compensate for this, turn either barrel adjuster at the ends of the cables. Make small adjustments, rechecking the functionality each time so it is not over done. We recommend taking it to your local TerraTrike dealer or bike shop to make sure it's done correctly.

Cleaning

With soap and water wash your TerraTrike occasionally, but especially after riding in inclement weather. It's important to dry and lubricate it right after cleaning. Wash the seat mesh on a gentle cycle and let it air dry if needed.

Road salt will kill your TerraTrike. Clean it off immediately! Likewise, salty air can corrode your TerraTrike over time. It's a good idea to wax the frame (only glossy finished areas) occasionally with a good quality car wax.

Regular Tune-up

We recommended taking your TerraTrike into a dealer or quality bike shop at the beginning of each riding season to make sure it is in good working order. They will charge you a nominal fee for a "tune up." For more info on these tips and your TerraTrike in general, go to www.terratrike.com

Warranty

TerraTrike warrants to the original owner that all its TerraTrike frames, seats, and steering components are free of defective materials and workmanship. To apply, owner must have purchased directly from TerraTrike or through a TerraTrike authorized dealer. Additionally, the TerraTrike must be assembled by TerraTrike or the authorized dealer. This is a lifetime warranty. Warranty is conditioned upon the TerraTrike being operated under normal conditions and properly maintained. Warranty does not apply to paint/finish or components attached to the frame. Attached components are subject to the warranty, if any, of it's original manufacturer. Warranty claims must be presented with original invoice to TerraTrike or the authorized dealer. TerraTrike reserves the sole discretion to repair or replace any parts covered by this warranty. Original owner shall be responsible for all labor, shipping, and travel costs related to repair or replacement of warranted parts. This warranty does not apply to normal wear and tear, or any defects, malfunctions, or failures that result from abuse, neglect, improper assembly, improper maintenance, alterations, collisions, or misuse.

Our lawyer made us say that. If you feel you have a warranty claim, contact us. We love our customers and want to keep you riding.

Liability Waiver

Riding a TerraTrike can result in injury or death. By riding a TerraTrike, the rider is expressly assuming the risk for any injury that may result from same. The owner is responsible for any and all injuries and/or property damages caused by someone riding the owner's TerraTrike. The owner shall indemnify TerraTrike for any damage or financial loss incurred by TerraTrike as the result of an injury or property damage caused by someone riding the owners TerraTrike. Our lawyer made us say that too. Our trikes are generally safe and fun to ride.

Sportster

Using a 5mm Allen wrench and a 13mm wrench loosen the boom clamp bolts where the boom slides into the frame. Slide the boom to the desired position and re-tighten the clamp bolts to 125 in. lbs. Adjust the chain length appropriately.

How to Ride

Entering and Exiting the Trike

Before entering, make sure the locking pins on the brake levers are engaged (refer to Parking section below). Straddle the boom and begin lowering into the seat while supporting yourself using the tires or the sides of the seat frame. Try not to put weight on the handlebars as they are not a load bearing member.

When exiting the trike, lock both brake levers and use the tires, boom, or seat frame to provide assistance when standing up from the seated position.

Turning

Lean into the center of your turns. This counteracts the outward pull and encourages the inside tire to stay on the ground since trikes do not lean like regular bikes.

Braking

To stop, squeeze both brake levers smoothly and with equal pressure. Each brake lever activates the corresponding brake on the front wheels. You will experience brake steer if you brake with only one side or unevenly. It is possible to tip the trike forward by stopping too fast.

Parking

The spring loaded pin on the brake levers is the locking pin. To engage the locks, simply squeeze the brake levers, press the locking pin and while holding the pin release the lever. To disengage, simply squeeze the lever.

Shifting

Shifting allows you to maintain a comfortable pedaling cadence while riding over varied terrain. Twist the shifter to what feels like a comfortable and maintainable pedal speed rather than worrying about what gear you are in. Internally geared hubs (standard on Rover 3, Rover 8 and Rambler 8) can be shifted while stopped or during a pause in pedaling. These hubs will not shift well while pedaling. Externally geared hubs (trikes with multiple cogs on the back wheel) can only be shifted while pedaling. Anticipate your shifts as to not get caught at a stop or on an uphill in too high of a gear. Attempting to shift under substantial pressure can cause damage and premature wear to the drive train.

Maintenance of your TerraTrike

Wear Items

Steering bushings, brake pads, tires and drivetrain are all parts on your TerraTrike that will slowly wear out over time. It is important to keep an eye on these parts from a safety and functionality standpoint as they slowly wear out. If an issue creeps up over time it may be a sign that one of these items are ready to be adjusted or replaced. Contact your local TerraTrike dealer or bike shop for proper service. While some drive train noise is normal, loud, grinding noises are not and can indicate the need for service, adjustment, and/or part replacement.

CONGRATULATIONS

You are now the proud owner of your very own TerraTrike. Each of our models, the Rover, Rambler, Tour II, Sportster, and Tandem Pro, are designed and built to maximize comfort without sacrificing performance. This guide will help you prepare your trike for your first ride and help you keep it in tip-top shape for the hundreds of miles to come. For specific or more complex maintenance instruction for your trike, refer to your model's Service Manual. These can be found online at <http://www.terratrike.com/manuals.php> or through your local dealer. To speak to TerraTrike technical assistance, contact us at (800) 945-9910. For everything else, visit our website at www.terratrike.com

Top 3 Online Resources for New Owners

MyTerraTrike: Sign up to gain access to the owners club by visiting www.terratrike.com/mytt.php

Online Forum: Talk on all topics TerraTrike by our loyal community at www.terratrike.com/forum/

Manuals: Downloadable PDFs for technical instruction at www.terratrike.com/manuals.php

Make sure to read and understand this manual completely before riding your TerraTrike.
HAVE FUN!

Unpacking

- ◆ When your TerraTrike arrives, carefully unpack the contents and inspect for any damage that may have occurred during shipping. If anything is amiss, contact the TerraTrike sales office immediately at (616) 455-5988.
- ◆ It's a good idea to flatten and save all boxes and packing materials. You may need them again if you ever need warranty service or want to ship your TerraTrike.

Survival Tips – Safety Notes and Cautions

- ◆ The first step in having a safe and enjoyable ride is using common sense. Make sure your trike is operating safely and ride as if you are invisible to other traffic. Always use caution.
- ◆ Remember your helmet and wear it on every ride! It may mess up your hair, but it may save your brain.
- ◆ Inspect your trike before each ride by checking tires for proper inflation and any damage; brakes for functionality; and anything that may have worked its way loose.
- ◆ Making yourself noticed is a key to riding safely.
- ◆ Front and rear lights are always recommended but absolutely necessary in low light conditions.
- ◆ Safety flags stick up high and can grab the attention of motorists (highly recommended).
- ◆ Avoid being hidden by traffic while riding.
- ◆ Look for traffic when turning or changing lanes. A rear view mirror is helpful and recommended.
- ◆ Use caution when cornering. Learn to use safe speeds for negotiating corners and going down hills. Your trike can be "rolled" if turned too sharply for a given speed.
- ◆ Keep your upper body quiet (minimal movement) while riding to avoid tadpoling or trike shift.

A slower cadence (i.e. higher gear) will help avoid this issue. If you are regularly riding at higher speeds consider options such as a larger rear wheel, larger chain ring or Speed drive to be able to get into a slower cadence.

- ◆ The disk brake rotors can be extremely sharp and will get very hot after heavy braking. Use caution around them!
- ◆ Your TerraTrike is designed with front brakes only. Brake evenly with both hands to avoid brake-steer. Avoid sudden, hard braking unless necessary.
- ◆ With more rugged tires your trike is suitable for riding on dirt roads. It is not designed for all-terrain, off road use, or near earth orbit.
- ◆ TerraTrikes are strong enough for most riding conditions, but that is not a license to ride in a hazardous or abusive manner (which will void the warranty)! Anyone can damage a TerraTrike if they try hard enough.

Adjusting your Trike to Fit You

Tire Inflation

Inflate tires to their recommended pressure indicated on the tire sidewalls. It is very important that both front tires have the same pressure for balanced steering. You can have a slightly lower pressure in the rear tire to add "cushion" to your ride. Every TerraTrike with Presta Valve (skinny stem) tubes will come with an adapter to use with Schrader Valve (like car tires) pumps.

Seat Adjustment: Fore and Aft

Note: It is very important that the seat attachments are checked. The seat is an integral part of the frame design and if loose will cause poor handling at higher speeds.

Seat Adjustment

Rambler / Tour II / Sportster Seat Adjustment

With the sliding seat clamp on these models, loosen but don't remove the three socket head bolts that hold the seat clamp together. Then slide the seat into the desired position. Do not slide past the "Max Seat Position" stickers as it could cause damage to your trike. Tighten the seat clamp bolts to a torque of 150 in. lbs. If your seat does not slide easily after loosening the 3 bolts, loosen the 2 seat frame bolts that hold the seat frame to the clamp.

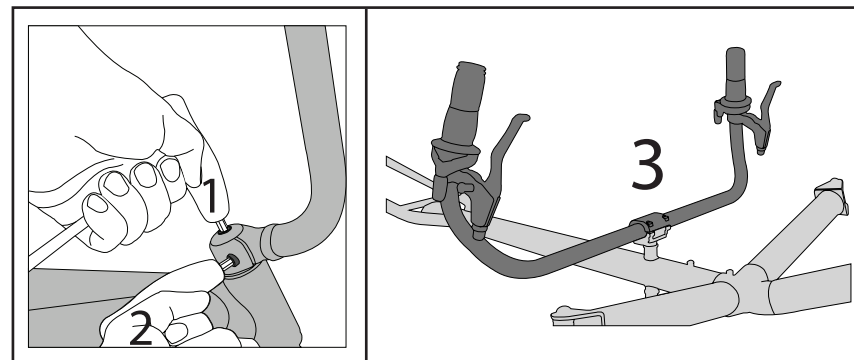
Rover Seat Adjustment

Simply open the quick release lever under the frame on the seat clamp and slide to desired position. Make sure the quick release lever is re-tightened enough to keep the clamp from sliding while riding.

Seat Adjustment: Incline/Recline

Remove the seat stay pins from the seat stays behind the seat. The stays can then be telescoped to a new position. Line up the holes in the seat stays, and re-insert the seat stay pins. These pins can be replaced with nuts and bolts for more rigidity if the angle will not be changed frequently.

Handlebar Adjustment



Rover/Rambler/Sportster

Adjust the handlebars by first sitting on the trike. Next, loosen the top cap bolt (1) and pinch bolt (2) that attach the handlebar to the trike. Move the handlebar to the desired position. Finally, lightly tighten the top cap bolt (1) first and then proceed to tighten the pinch bolt (2).

Tour II

Loosen the 4 small bolts (3) in the steering clamp. Set the handlebar to the desired angle and tighten the bolts incrementally, so the top clamps down parallel to the base.

Boom Adjustment

Note: TerraTrike attempts to setup your trike to fit you right out of the box with minor seat adjustment. However, some customers may find the need for fine tuning by adjusting the boom length. If you decide to adjust the boom length the chain will also need to be lengthened or shortened 2 in. for every inch the boom is moved. For this reason we recommend taking it to your local TerraTrike dealer or bike shop to make sure it's done correctly.

Rover Boom Adjustment

Loosen the 4 set screws along the bottom left corner of the main tube with a 4mm Allen wrench. Slide the boom to the desired length and re-tighten the set screws to 90 in. lbs. Adjust the chain length appropriately.

Rambler Boom

Using a 5mm Allen wrench, loosen the two boom clamp bolts at the point where the boom slides into the frame. Slide the boom to the desired position and re-tighten the clamp bolts to 125 in. lbs. Adjust the chain length appropriately.

Tour II

This is a "fixed boom" trike meaning it is not adjustable but comes in different sizes. If you feel a different size is needed contact your dealer or TerraTrike.