



Service Manual for:

NL955

Millennium
Series

Private Use Wheelchair Lifts

Series **A7**

DOT — Private Use Lift

"DOT — Private Use Lift" verifies that this platform lift meets only the "private use lift" requirements of FMVSS No. 403. This lift may be installed on all vehicles appropriate for the size and weight of the lift, except for buses, school buses, and multi-purpose passenger vehicles other than motor homes with a gross vehicle weight rating (GVWR) that exceeds 4,536 kg (10,000 lb).

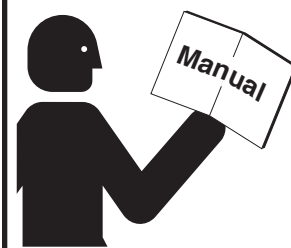


"Providing Access to the World"®

International Corporate Hdqrs: P.O. Box 310 Winamac, IN 46996 USA
1-800-THE LIFT® (574) 946-6153 FAX: (574) 946-4670



! WARNING



Read manual
before installing
or servicing lift.
Failure to do so
may result in
serious bodily
injury and/or
property damage.

Braun NL955 Series

37772 Rev A

June

2012

Congratulations

We at The Braun Corporation wish to express our fullest appreciation on your new purchase. With you in mind, our skilled craftsmen have designed and assembled the finest lift available.

This manual provides service-related material. Refer to the FMVSS No. 403 Quick Reference Installation Sheet for installation instructions, operating instructions and maintenance procedures.

Braun Millennium Series™ lifts are built for dependability and will provide years of pleasure and independence as long as the lift is installed and serviced as specified by a Braun certified technician, and the lift is operated by an instructed person.

Sincerely,
THE BRAUN CORPORATION



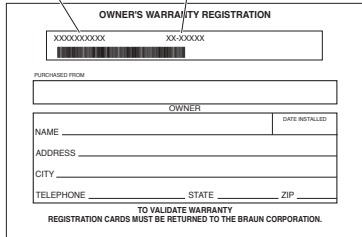
Ralph W. Braun
Chief Executive Officer

Warranty and Registration Instructions

Immediately upon receiving the lift, examine the unit for any damage. Notify the carrier at once with any claims.

Two warranty/registration cards (shown right) are located in the lift-mounted manual storage pouch. The sales representative must process one of the cards. The consumer must fill out the other card and mail it to The Braun Corporation. The warranty is provided on the back cover of this manual. The warranty cards must be processed to activate the warranty.

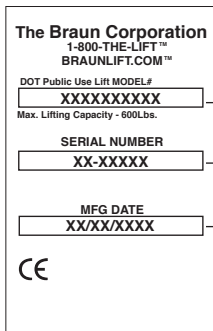
Model No. Serial No.



The card is titled "OWNER'S WARRANTY REGISTRATION". It contains fields for "PURCHASED FROM", "OWNER", "NAME", "ADDRESS", "CITY", "TELEPHONE", "STATE", and "ZIP". There are also fields for "DATE INSTALLED" and "DATE RETURNED". A barcode is present. At the bottom, it says "TO VALIDATE WARRANTY REGISTRATION CARDS MUST BE RETURNED TO THE BRAUN CORPORATION."

Sample Warranty/Registration Card

Two Braun Serial No./Series No. identification tags (shown below) are posted on the lift. One I.D. tag is posted on the opposite pump side vertical arm. A second I.D. tag is located on the opposite pump side tower. Both I.D. tags provide the product identification information provided on the warranty/registration card. Record the information in the space provided (or document on a copy). This information must be provided when filing a warranty claim or ordering parts.



The tag is a rectangular card with the following text: "The Braun Corporation", "1-800-THE-LIFT™", "BRAUNLIFT.COM™", "DOT Public Use Lift MODEL# XXXXXXXXX", "Max. Lifting Capacity - 600Lbs.", "SERIAL NUMBER XX-XXXXX", "MFG DATE XX/XX/XXXX", and a CE mark.

Model No. _____

Serial No. _____

Date of Manufacture _____

Sample Serial No./Series No. Identification Tag

Contents

Troubleshooting and Maintenance

Lift Terminology.....	2
Switch and Sensor Locations	3
Certification Checklist Diagnostic Procedures	4
Platform Fold Pressure Adjustment.....	5
Outer Barrier Fold Pressure Adjustment.....	5
Platform Angle Adjustment	6-7
Platform Stop Blocks	7
Platform Floor Level Adjustment	8
Bridging Microswitch Adjustment	9
LCD Lift Codes	10-11
Lubrication Diagram	12
Maintenance and Lubrication Schedule	13-16
Lift Electrical Schematic	17
Lift Wiring Diagram	18

Hydraulics

Hydraulic Schematic	19
Hydraulics Parts List	20
Hydraulics Diagram	21

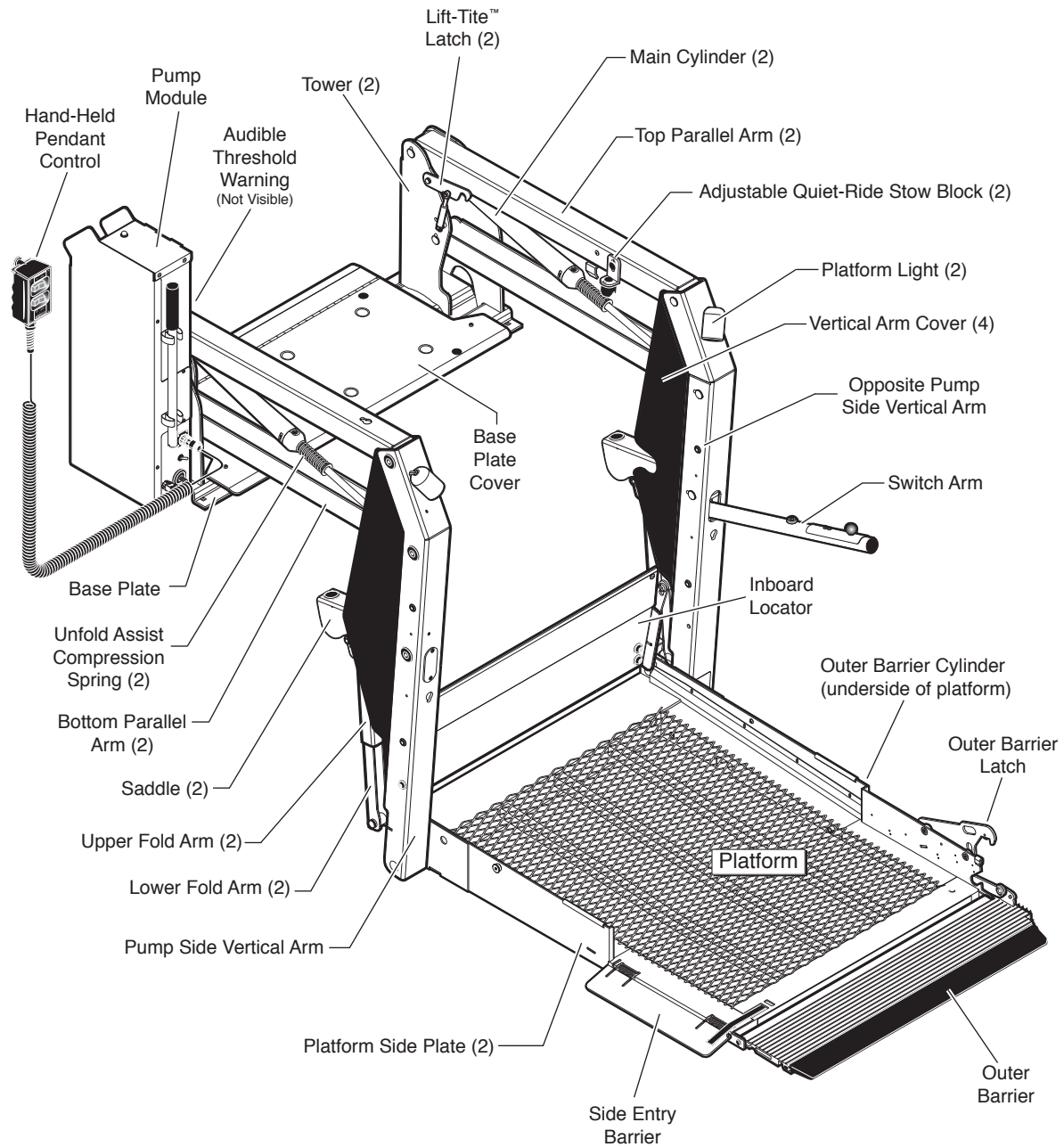
Repair Parts

Pump Module	
Pump Module Parts List	22
Pump Module Diagram	23
Lift Exploded View	
Repair Parts List	24
Exploded View	25

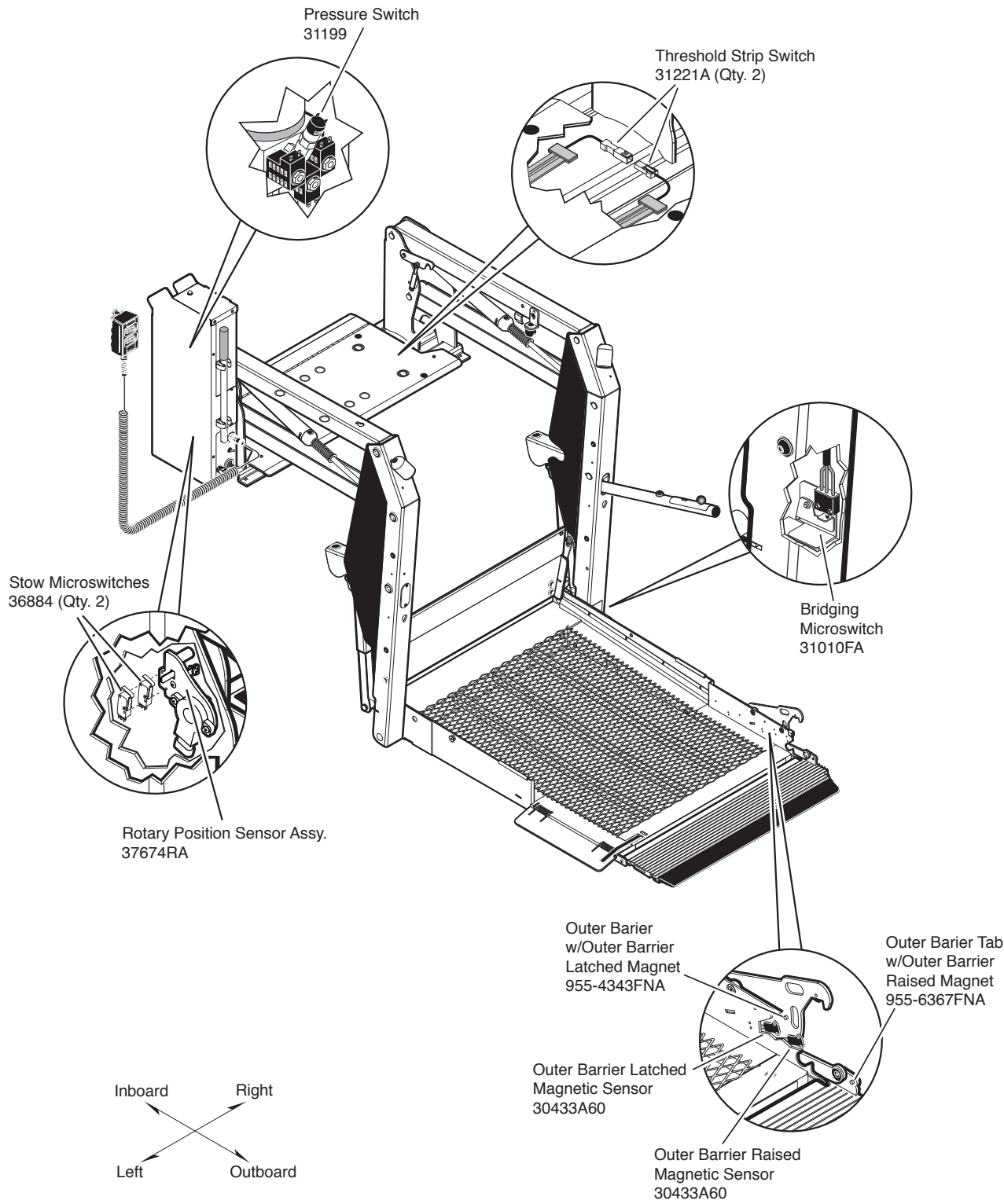
Warranty

Braun® Limited Warranty	27-29
-------------------------------	-------

Lift Terminology



Switch and Sensor Locations



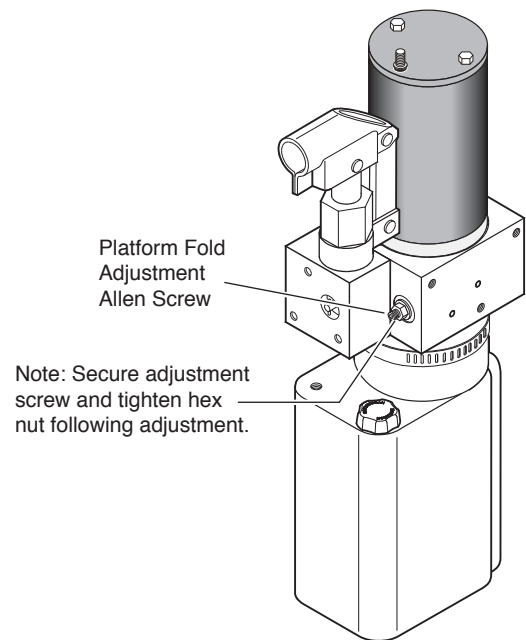
Certification Checklist Diagnostic Procedures

The following operations and conditions must be functionally verified in order for the lift to be FMVSS 403/404 compliant. If an operation does not function as described or a condition is not met, follow the referenced procedures to correct the problem or contact a Braun Corporation Product Support representative at 1-800-THE LIFT®.

- Vehicle movement is prevented unless the lift door is closed, ensuring the lift is stowed.
 - 1. Verify on the pump module mounted interlock connector that the Lift Not Stowed Signal (pin 5) does not have a ground signal - OR - Lift Stowed Signal (pin 7) has a +12 volt signal - OR - (pin 9) has a ground signal (depends on interlock used).
 - 2. Refer to the interlock installation instructions.
- Lift operation shall be prevented unless the vehicle is stopped and vehicle movement is prevented.
 - 1. Verify vehicle secure signal (pin 6) has a +12 volt signal.
 - 2. Refer to the interlock installation instructions.
- The platform will not fold/stow if occupied.
 - Refer to Platform Fold Pressure Adjustment procedures.
- The inboard locator will not raise if occupied.
 - Call Product Support
- The outer barrier will not raise if occupied.
 - Refer to Outer Barrier Fold Pressure Adjustment procedures.
- Verify platform lighting when lift is deployed and pendant illumination when lift is powered.
 - 1. Replace bulb(s) in the light housing.
 - 2. Check fuse (5 amp fuse on circuit board; F12)
- A visual and audible warning will activate if the threshold area is occupied when the platform is at least 1" below floor level.
 - 1. Remove the threshold warning plate
 - 2. Verify the threshold strip switch connectors are connected
 - 3. Replace the threshold strip switch
 - 4. Reinstall the threshold warning plate
- Platform movement is prohibited beyond the position where the inboard locator is fully deployed (up).
 - Call Product Support.
- Lift platform movement shall be interrupted unless the outer barrier is deployed (up).
 - Call Product Support.

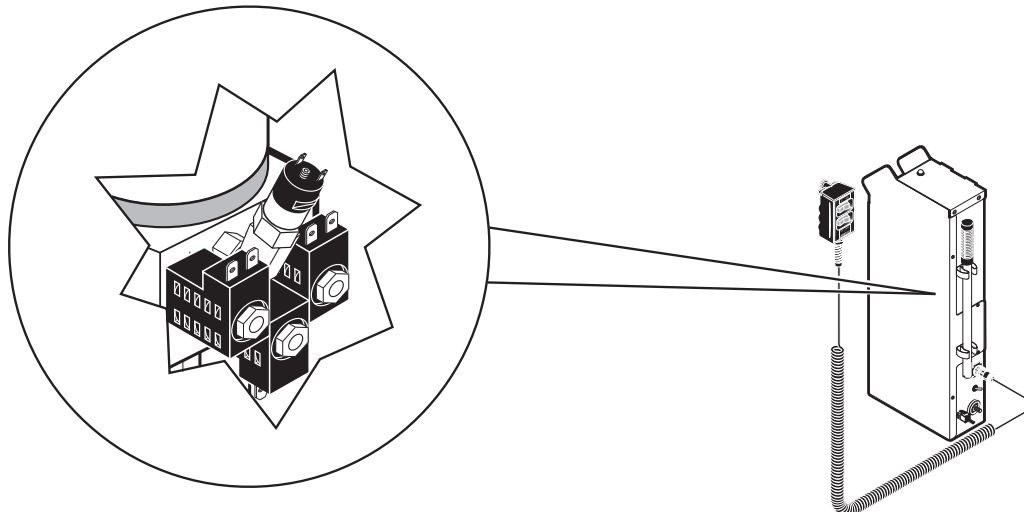
Platform Fold Pressure Adjustment

1. Position the platform at the floor level loading position.
2. Loosen the hex nut on the adjustment screw (do not remove hex nut).
3. Turn the adjustment screw counter clockwise until the platform does not fold when the Fold button is pressed.
4. Turn the adjustment screw clockwise in 1/4 turn increments and press the Fold button until the platform folds completely (Note: Return the platform to floor level position after each attempt to fold the platform).
5. Turn the adjustment screw an additional 1/8 turn after the platform folds successfully.
6. Tighten the hex nut without moving the adjustment screw.
7. Verify the platform will not stow while occupied.



Outer Barrier Fold Pressure Adjustment

1. Lower the platform to the ground level loading position.
2. Remove the pump cover.
3. Turn the adjustment screw (shown below) counter clockwise until the outer barrier does not raise when the Up button is pressed.
4. Turn the adjustment screw clockwise in 1/4 turn increments until the outer barrier raises and fully locks in position when the Up button is pressed. DO NOT turn the adjustment screw beyond this position.
5. Verify the outer barrier will not raise when occupied.
6. Reattach the pump cover.



Platform Angle Adjustment

Lowering Sequence Requirements:

1. The outboard end (toe) of the platform must contact the ground first to ensure the spring-loaded outer barrier unfolds fully. See Figure A.
2. The inboard end (heel) of the platform must lower fully (vertical arms must contact ground when fully lowered). See Figure A.

The angle of the platform at ground level directly affects the angle of the platform when positioned at floor level.

Raise the platform to floor level. Note the angle of the platform.

The platform at floor level should have a slight upward angle as shown in Figure B.

Adjust platform angle as detailed below.

Adjustment Procedure:

Platform angle adjustment Allen screws are provided on each side of the platform (see photo at right and details on following page).

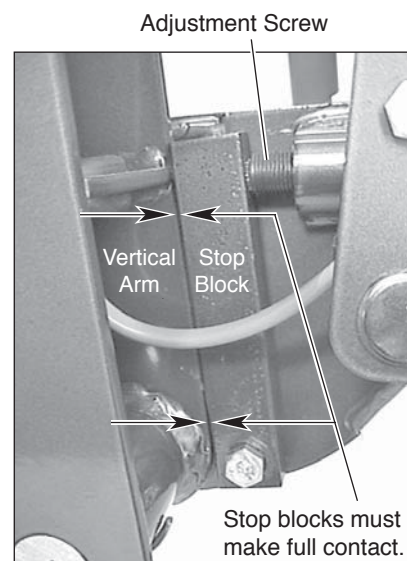
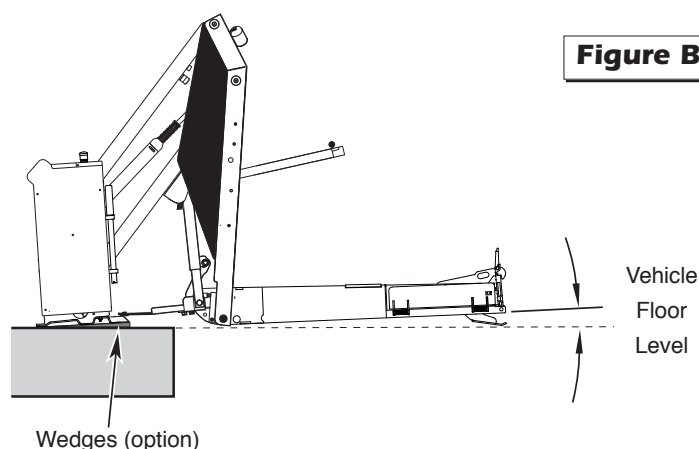
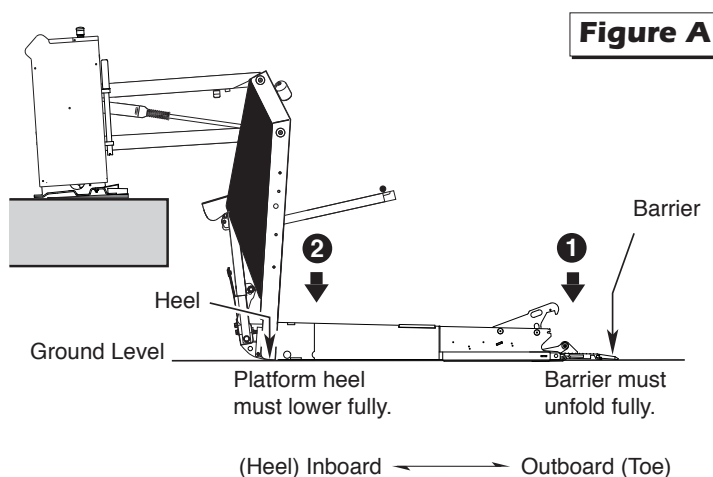
Turn adjustment screws clockwise to raise the outboard end of the platform. Turn adjustment screws counterclockwise to lower the outboard end of the platform.

Both adjustment screws must be adjusted equally. Apply Loctite® to adjustment screws following adjustment.

Platform Stop Blocks: When adjusting platform angle, ensure both stop blocks are making full contact with the vertical arms (see photo at right and details on following page).

Floor Level Adjustment: Following platform angle adjustment, set platform floor level positioning as detailed in Platform Floor Level Adjustment.

Check platform angle again after performing Platform Floor Level Adjustment procedures.



Platform Angle Adjustment

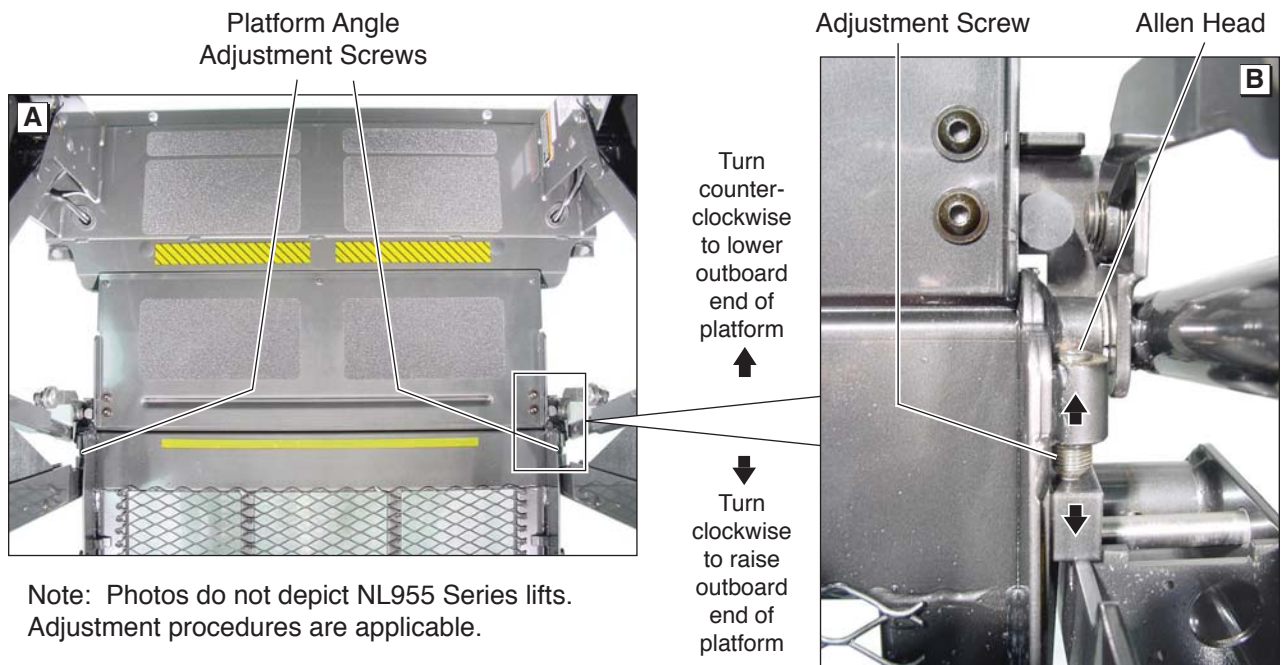
Adjustment Allen screws are provided on each side of the lift platform for adjusting the platform angle. Adjust platform angle as specified on previous page.

To raise the outboard end of platform - turn adjustment screw clockwise.

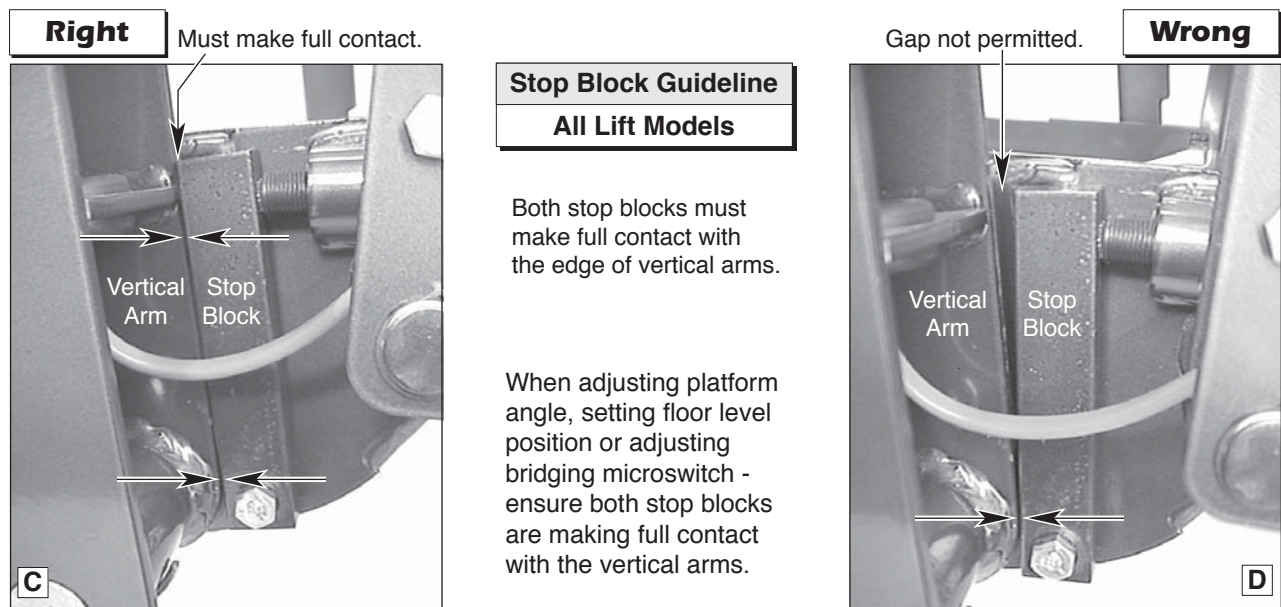
To lower the outboard end of platform - turn adjustment screw counterclockwise.

Note: Both adjustment screws must be adjusted equally.

Apply Loctite® to adjustment screws following adjustment.



Platform Stop Blocks



Platform Floor Level Adjustment

Before setting floor level position:

- Adjust platform angle as detailed on page 6.
- Ensure both stop blocks are making full contact with vertical arms (details on page 7).

Floor Level Adjustment:

1. Position platform at desired floor level position (passenger loading/unloading height).

Position platform such that:

- a. the onboard locator is laying flat on the threshold plate
- b. platform has not begun to fold

Note: Use hand pump to position platform at proper position

if unable to stop platform when powering lift.

2. Turn Lift Power switch Off.
3. Press Floor Position Set button (located between pump housing and lift tower).
4. While pressing the Floor Position Set button, turn the Lift Power switch On.
5. Continue pressing the Floor Position Set button until the lift sounds three “beeps.”
6. Release the Floor Position Set button.
7. Cycle lift to verify that platform stops at the set floor level position. Note: If platform does not stop at



Floor Level Set Button

the intended position - repeat adjustment procedures. If repeating procedures fails - refer to Diagnostics section below.

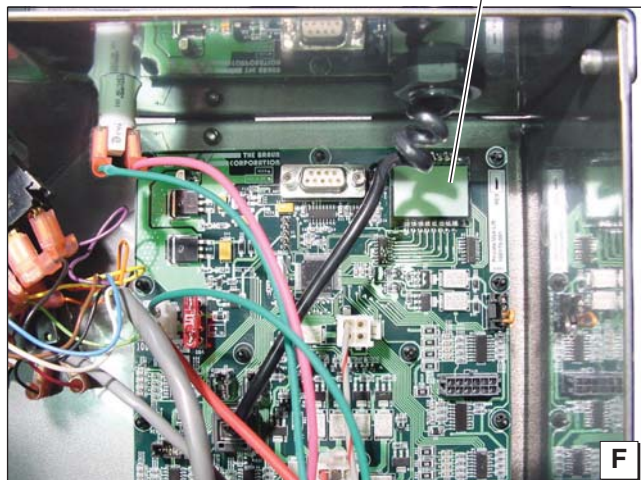
Diagnostics: Diagnostic codes have been established in event the lift platform floor position does not set (the lift does not

sound three “beeps” - see Step 5 above). The control board located inside the pump housing is equipped with an LCD

screen. Remove the pump cover to access the LCD screen. The following diagnostic codes will help resolve floor position setting problems:

- 91 – The platform position is out of a predetermined acceptable range
- 92 – The Bridging Microswitch is not activated (adjust switch or lower the platform)
- 94 – The Outer Barrier Up switch is not activated (adjust switch)
- 95 – The Outer Barrier Latched sensor is not activated (check latch)

LCD Screen



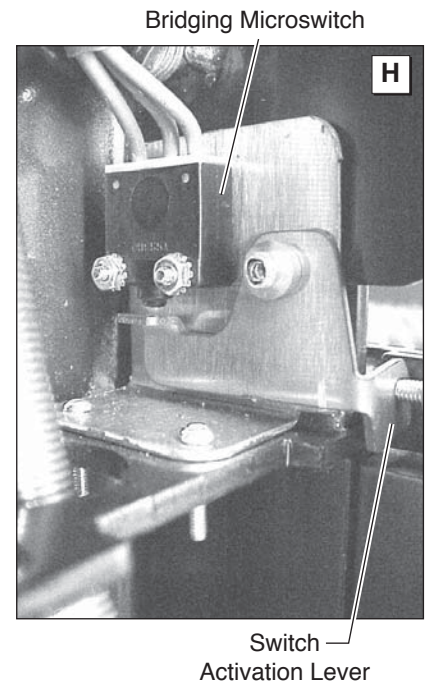
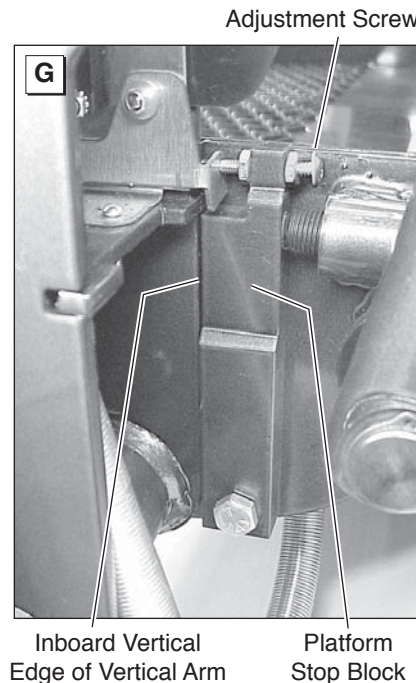
Bridging Microswitch Adjustment

Bridging Microswitch:

The bridging microswitch is located at the bottom of the right (front) vertical arm. See Photos A and B. An adjustment screw is built into the platform stop block.

The bridging microswitch will be deactivated if the outboard end of the platform contacts the unloading surface before the inboard end while the DOWN switch is pressed.

The deactivated bridging microswitch interrupts power to the DOWN switch circuit and stops the down travel of the platform (while allowing the outer barrier to deploy).



Adjustment Guidelines:

Caution: This adjustment is factory set and typically should not require adjustment.

Before adjusting the bridging microswitch:

- Adjust platform angle as detailed on page 6.

- Adjust floor level position as detailed on page 8.
- Ensure platform is in the fully unfolded position.
- Ensure both stop blocks are making full contact with vertical arms (details on page 7).

Failure to follow these guidelines will result in an overtight adjustment that will bend the adjustment screw, break the bridging switch and/or result in lift operation failure.

Bridging Microswitch Adjustment

1. Position the platform at floor level (or slightly below). Ensure the platform is not partially folded. From the stowed position, press the UNFOLD switch until the pump stops running and the platform comes to a full stop. From below floor level, press the UP switch until the pump stops running and the platform comes to a full stop.
2. Check both platform stop blocks to ensure there is no gap between the stop blocks and the vertical arms. See Photos B, C and D on page 7. A gap may indicate that the platform is not fully unfolded or the platform angle adjustment bolts are not adjusted equally on both sides.
3. Loosen the two jam nuts on the bridging switch activation screw (see Photo G). Tighten the screw until the activation lever is fully depressed. Verify that there is no play in the activation lever and tighten the jam nuts.
4. Test lift for proper operation.

LCD Lift Codes

To better understand the Braun LCD Trouble shooting display you must first understand the numbers that appear on the screen. There are Flashing Codes, Solid Error Codes, and Solid Normal Operational Codes.

Flashing Codes #65-89: About 10 seconds after an operation has stopped there are a set of scrolling flashing numbers that indicate whenever a particular sensor or switch has been activated. These numbers will start at number 65 and scroll up to number 89, then start the sequence over. Remember they are not error codes. Keep in mind that the lift will display codes for different positions and certain flashing codes must be present for that position, you will not always get an error code.

Solid Error Codes #50-64: These are the numbers that will come on the screen when the audible and visual alarm goes off, and will direct you to where the problem exists. These numbers will only stay on the screen for about 10 seconds and then the flashing codes will scroll indicating what sensors are active. This sequence of codes will keep repeating. It is important to be looking at the screen when trying to get the lift to fail.

Solid Normal Operational Codes: There are also solid numbers that will appear while and after the lift is moving that indicate the lift operation and platform position.

Troubleshooting Procedures

1. While looking at the LCD screen, operate the lift until the failure occurs. Read the number that comes on the display the moment the alarm goes off and the light starts to flash. This code will only stay on the screen for 10 seconds.
2. Look up the number on the correct error code sheet and determine what part on the lift is causing the failure. Go to the part on the lift that is suspected of causing the failure and look for anything obvious like magnets missing, broken wires etc. If nothing is found, the next step is to determine if that sensor is sending a signal to the board.
3. Bring the platform to the level that the sensor should be activated using the backup pump if needed. At this point, look up the flashing code that corresponds to that sensor in the error code sheet, look at the LCD screen and wait for the flashing scrolling numbers to appear. If the number is not included in the scrolling numbers, you know that sensor is the problem. You should then check the harness or try another magnet with the south side of the magnet facing the sensor and see if the number will come up on the display.
4. If the problem is still not found or the harness is suspected, the voltages should to be checked to and from the sensor to find the exact location of the problem. First determine the 3 wire colors for this sensor at the board and understand the 3 voltage readings needed to operate the sensor, the 12V power, 8V power, and the 8V input signal to the PC board when activated by a magnet. First check for a 8V input signal coming from the sensor to the wire going into the PC board, if there is 11V on this wire, the sensor is not being activated by the magnet. Next check the 12V and 8V wires at the PC board plug leading to the sensor. Once verified at the plug on the PC board, the voltages should then be checked at the next plug down on the harness going to the sensor until the location of the problem is found.

Anytime you see the code for that specific switch you will have 8 volts on that colored wire on the 8 or 18 pin connector from that switch. IE: Outboard Barrier is closed "72" will appear on the screen and also 8V will be present on the signal wire from that switch, if no code is present the voltage will be 11V.

LCD Lift Codes

Listed below are codes that the lift controller outputs during lift operation. The codes will be displayed on an LCD screen located on the lift control board inside the pump module. See the Manual Operating Instructions in the operator's manual for pump cover removal instructions.

Non-Flashing Numbers

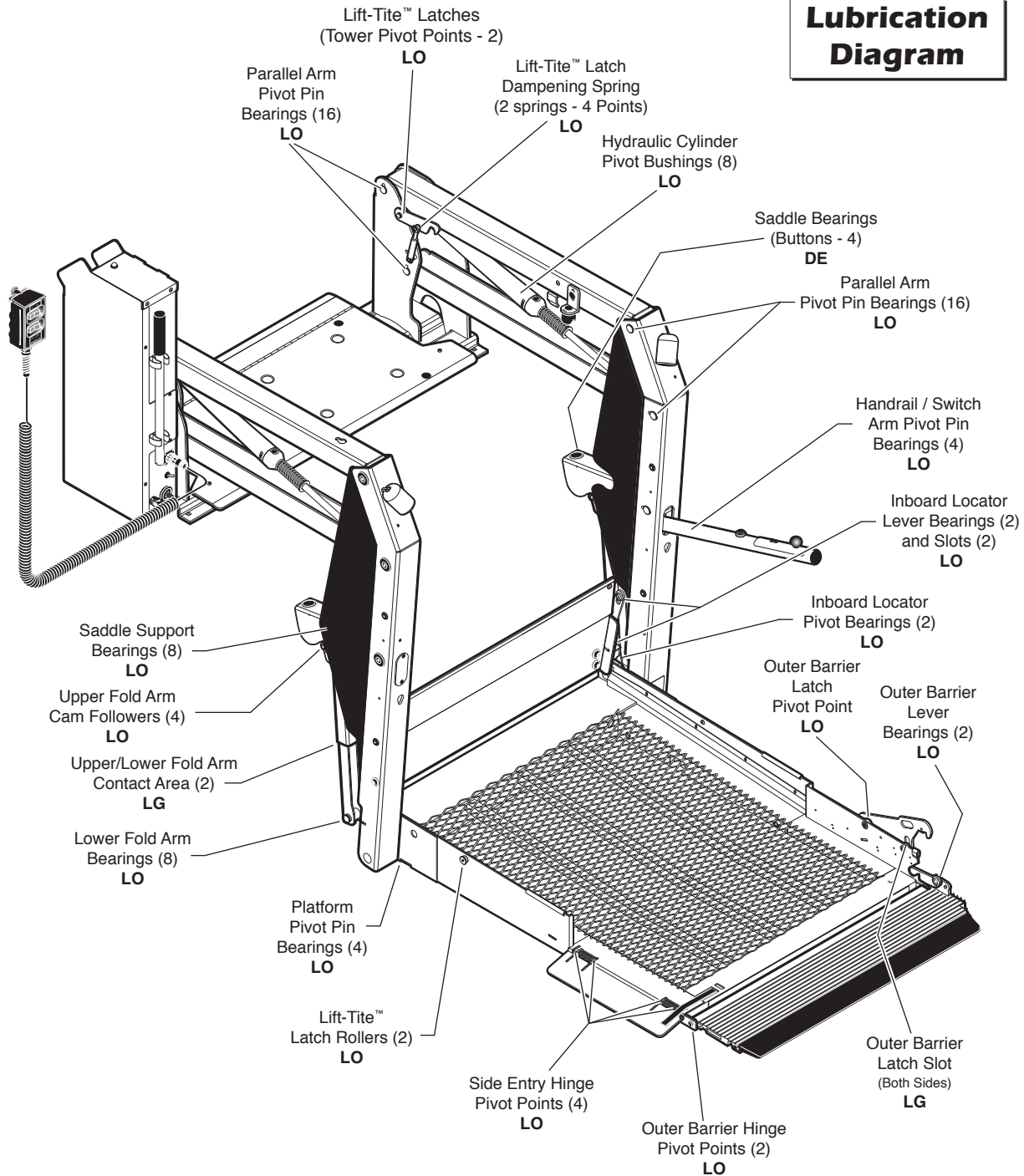
- 01 – Platform stowed
- 02 – Platform unfolding
- 03 – Platform unfolding paused
- 04 – Platform at floor level
- 05 – Platform beginning to lower
- 06 – Platform lowering (threshold cannot be occupied from this point down)
- 08 – Platform at ground level
- 09 – Outer barrier moving to vertical position
- 11 – Platform raising paused at floor
- 12 – Platform folding (limited pressure)
- 13 – Platform folding (full pressure)
- 14 – Timed fold (cinching lift title) or (anti-rattle state)
- 15 – Platform folding stopped
- 16 – Paused fold
- 17 – Platform between ground and 3" above ground
- 18 – Platform above 3"
- 19 – Outer barrier moving to horizontal position
- 20 – The doors are not fully opened (only applicable when door operators are installed) - Check for jumper if door operators are not installed
- 21 – The doors are opening (only applicable when door operators are installed)
- 22 – The doors are closing (only applicable when door operators are installed)
- 28 – Illegal function/not defined
- 29 – Interlock fault not recognized (or has been cleared but a motion button is still pressed)
- 30 – Platform location unknown
- 31 – Platform location transition state; attempting to locate position
- 35 – Two or more motion buttons are being pressed
- 37 – Motion button being pressed is not a valid motion
- 50 – Outer barrier is not up at floor level
- 51 – Threshold is occupied when platform is 1" or more below floor level
- 54 – Outer barrier is occupied before it is up
- 55 – Outer barrier is not latched
- 56 – Outer barrier is not up and latched and bridge switch did not deactivate
- 57 – Outer barrier is not up and latched and ground detect switch did not deactivate
- 58 – Outer barrier is not up and latched and the platform is 3" above the ground
- 59 – Outer barrier is not up after pausing platform travel
- 75 – Low voltage detected; must turn off power switch to reset LCD
- 77 – Vehicle secure interlock has not been activated
- 90 – Position will be set if you keep holding the button until it beeps
- 91 – Position is out of a predetermined acceptable range of floor position
- 92 – Bridge switch is not activated, needs adjusting
- 94 – Outer barrier is not up, fix and try again
- 95 – Outer barrier is not latched
- 99 – Controller program is not valid; replace controller

Flashing Numbers

- Flashing 65 – UNFOLD button is pressed
- Flashing 66 – FOLD button is pressed
- Flashing 67 – DOWN button is pressed
- Flashing 68 – UP button is pressed
- Flashing 69 – Bridge switch is activated
- Flashing 70 – Outer barrier latch switch is activated
- Flashing 71 – Ground detect switch is activated
- Flashing 72 – Outer barrier up switch is activated
- Flashing 76 – Outer barrier occupied switch is activated
- Flashing 78 – Threshold tape switch "A" is activated
- Flashing 79 – Threshold tape switch "B" is activated
- Flashing 80 – Position set button is pressed
- Flashing 81 – Single function UP / FOLD / CLOSE button is pressed
- Flashing 82 – Single function OPEN / UNFOLD / DOWN button is pressed
- Flashing 87 – CLOSE button is pressed
- Flashing 88 – OPEN button is pressed
- Flashing 89 – Door full open switch is activated (or jumper is installed on control board)

Maintenance and Lubrication

Lubrication Diagram



See the Maintenance/Lubrication Schedule for recommended applications per number of cycles.

Lubricant	Type	Specified (recommended) Lubricant	Available Amount	Braun Part No.
LO - Light Oil	Light Penetrating Oil (30 weight or equivalent)	LPS2, General Purpose Penetrating Oil	16 oz. Aerosol Can	15807
DE - Door-Ease	Stainless Stick Style (tube)	Door-Ease Stick (tube)	1.68 oz.	15806
LG - Light Grease	Light Grease (Multipurpose)	Lubriplate	14 oz. Can	15805

Maintenance and Lubrication Schedule

750 Cycles	Outer barrier pivot bearings (2)	Apply Light Oil - See Lubrication Diagram
	Outer barrier latch pivot point	Apply Light Oil - See Lubrication Diagram
	Outer barrier latch slot	Apply Light Grease to both sides of slot. See Lubrication Diagram
	Outer barrier lever bearings (2)	Apply Light Oil - See Lubrication Diagram
	Lift-Tite™ latches (tower pivot points - 2)	Apply Light Oil - See Lubrication Diagram
	Lift-Tite™ latch gas (dampening) spring pivot points (2 springs - 4 points)	Apply Light Oil - See Lubrication Diagram
	Inspect Lift-Tite™ latches and gas springs for wear or damage (bent, deformed or misaligned), positive securement (external snap rings) and proper operation	Resecure, replace damaged parts or otherwise correct as needed. Note: Apply Light Grease to Lift-Tite™ latch tower pivot point if replacing latch.
	Inspect outer barrier for proper operation	Correct or replace damaged parts.
	Inspect outer barrier latch for proper operation, positive securement, and detached or missing spring	Correct or replace damaged parts and/or relubricate. See Lubrication Diagram
	Adjust platform fold pressure and outer barrier fold pressure	See Platform Fold Pressure Adjustment & Outer Barrier Fold Pressure Adjustment
1500 Cycles	Verify FMVSS 403/404 Certification Checklist	See Certification Checklist Diagnostic Procedures
	Inspect lift for wear, damage, or any abnormal condition	Correct as needed.
	Inspect lift for rattles	Correct as needed
	Perform all procedures listed in previous section also	
	Upper/lower fold arms	Apply grease (synthetic) to contact areas between upper/lower fold arms. See Lubrication Diagram.
continued	Platform pivot pin bearings (4)	Apply Light Oil - See Lubrication Diagram
	Lower fold arm bearings (8)	Apply Light Oil - See Lubrication Diagram
	Inboard locator lever bearings (2)	Apply Light Oil - See Lubrication Diagram

Maintenance and Lubrication Schedule

<div>continued</div> <div>1500 Cycles</div> <div>continued</div>	Inboard locator lever slot (2)	Apply Light Oil - See Lubrication Diagram
	Inboard locator pivot bearings (2)	Apply Light Oil - See Lubrication Diagram
	Saddle support bearings (8)	Apply Light Oil - See Lubrication Diagram
	Upper fold arm cam followers (4)	Apply Light Oil - See Lubrication Diagram
	Parallel arm pivot pin bearings (16)	Apply Light Oil - See Lubrication Diagram
	Handrail / switch arm pivot pin bearings (2)	Apply Light Oil - See Lubrication Diagram
	Hydraulic cylinder pivot bushings (8)	Apply Light Oil - See Lubrication Diagram
	Inspect Lift-Tite™ latch rollers for wear or damage, positive securement and proper operation (2)	Correct, replace damaged parts and/or relubricate.
	Inspect inboard locator for: <ul style="list-style-type: none"> • Wear or damage • Proper operation. Inboard locator should just rest on top surface of the base plate cover. • Positive securement (both ends) 	Resecure, replace or correct as needed. See Platform Angle Instructions and Floor Level Adjustment Instructions.
	Inspect switch arm components for wear or damage, and for proper operation	Replace damaged parts
	Inspect switches and sensors for securement and proper adjustment	Resecure, replace or adjust as needed.
	Make sure lift operates smoothly	Realign towers and vertical arms. Lubricate or correct as needed.
	Inspect external snap rings: <ul style="list-style-type: none"> • Lower fold arms (6) • Lift-Tite™ latch roller (2) • Lift-Tite™ latch dampening spring (4) • Upper fold arm cam followers (4) • Outer barrier hydraulic cylinder mounting pin (2) • Inboard locator lever bracket pins (2) 	Resecure or replace if needed.
	Inspect inboard locator locks (2) and torsion springs (2) for wear or damage and for proper operation.	Replace damaged parts. Apply Light Oil to inboard locator lock pivot point.
	Inspect lower fold arm pins (2), axles (2) and bearings (8) for wear or damage and positive securement.	Replace damaged parts and resecure as needed. Apply Light Oil.
	Side entry hinge pivot points	Apply Light Oil - See Lubrication Diagram

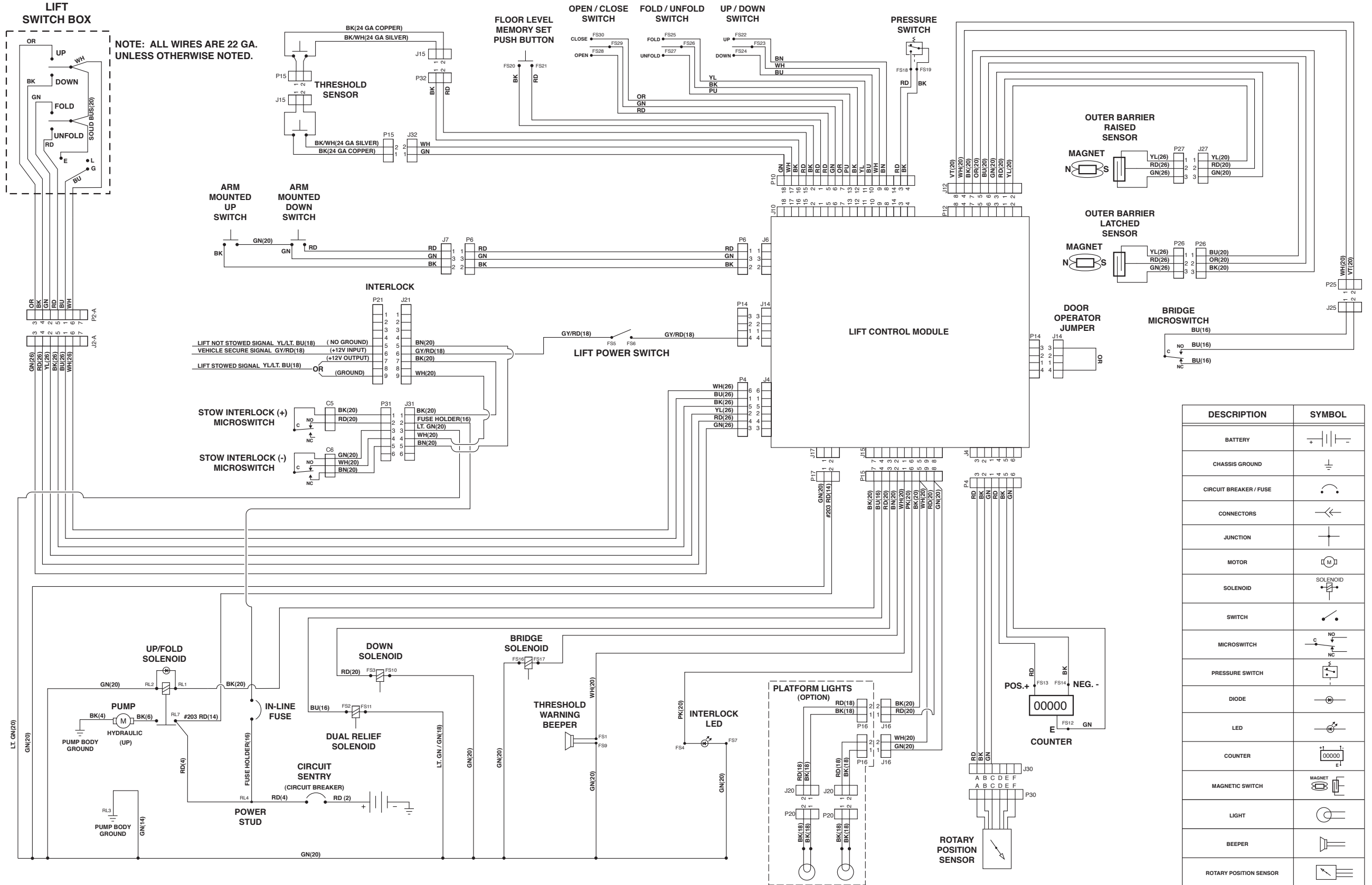
Maintenance and Lubrication Schedule

<div>continued</div> <div>1500 Cycles</div>	<div>Inspect side entry for proper operation, positive securement, and wear or damage to nylon belt and roller chain</div> <div>Correct or replace damaged parts</div> <div>Remove pump module cover and inspect:</div> <div> <ul style="list-style-type: none"> Hydraulic hoses, fittings and connections for wear or leaks Harness cables, wires, terminals and connections for securement or damage Control Board, Up / fold solenoid, relays, fuses and switches for securement or damage </div> <div>Resecure, replace or correct as needed.</div>
<div>4500 Cycles</div> <div>continued</div>	<div>Perform all procedures listed in previous section also</div> <div>Inspect cotter pins on platform pivot pins (2)</div> <div>Resecure, replace or correct as needed</div> <div>Hydraulic Fluid (Pump) - Check level. Note: Fluid should be changed if there is visible contamination. Inspect the hydraulic system (cylinder, hoses, fittings, seals, etc.) for leaks if fluid level is low.</div> <div>Use Braun 32840-QT hydraulic fluid (Exxon® Unisolv HVI 26). Do not mix with Dextron III or other hydraulic fluids. Check fluid level with platform lowered fully. Fill to maximum fluid level indicated on reservoir (specified on decal). Do not overfill. If fluid level decal is not present - measure 35mm (1-3/8") from the fill port to locate fluid level.</div> <div>Inspect cylinders, fittings, and hydraulic connections for wear, damage, or leaks</div> <div>Tighten, repair or replace if needed.</div> <div>Inspect outer barrier cylinder hose assembly (hose, fasteners, connections, etc.) for wear, damage, or leakage</div> <div>Tighten, repair or replace if needed.</div> <div>Inspect parallel arms, bearings, and pivot pins for visible wear or damage</div> <div>Replace if needed.</div> <div>Inspect parallel arm pivot pin mounting bolts (8)</div> <div>Tighten or replace if needed.</div> <div>Inspect platform pivot pins, bearings, and vertical arms for wear, damage, and positive securement</div> <div>Replace damaged parts and resecure as needed. Apply Light Grease during reassembly procedures.</div> <div>Inspect upper / lower fold arms, saddle, saddle support, handrail / switch arm, and associated pivot pins and bearings for visible wear or damage</div> <div>Replace if needed.</div>

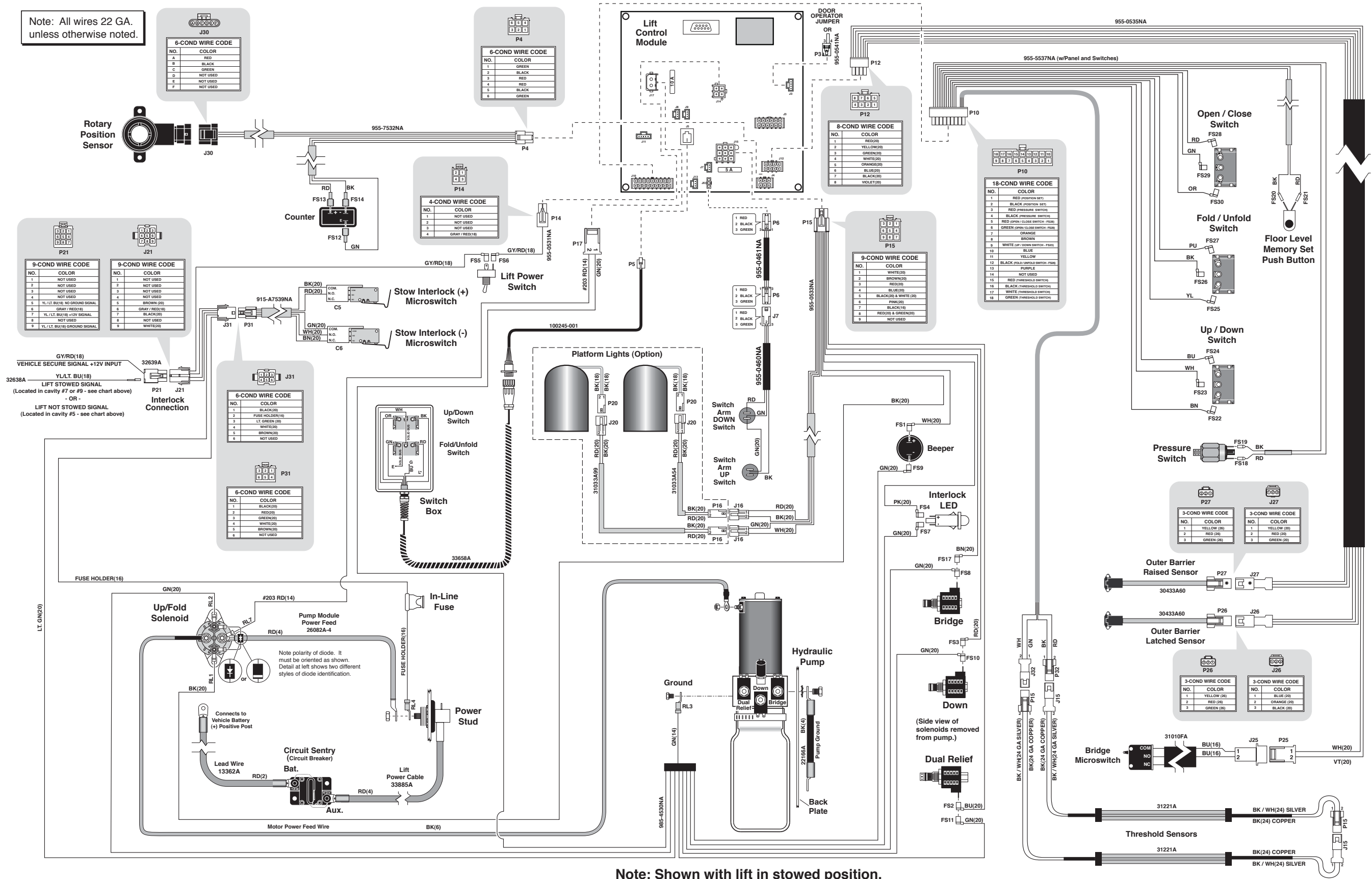
Maintenance and Lubrication Schedule

<div>continued</div> <div>4500 Cycles</div>	Inspect gas springs (cylinders - 4 and Lift Tite™ dampeners - 2) for wear or damage, proper operation and positive securement	Tighten, replace or correct as needed
	Inspect saddle bearings (buttons - 4)	Apply Door-Ease or replace if needed. See Lubrication Diagram.
	Inspect vertical arms and plastic covers	Resecure or replace if needed.
	Inspect power cable	Resecure, repair or replace if needed.
	Mounting	Check to see that the lift is securely anchored to the vehicle and there are no loose bolts, broken welds, or stress fractures.
	Decals and Antiskid	Replace decals if worn, missing, or illegible. Replace antiskid if worn or missing.
Consecutive 750 Cycle Intervals	Repeat all previously listed inspection, lubrication and maintenance procedures at 750 cycle intervals.	

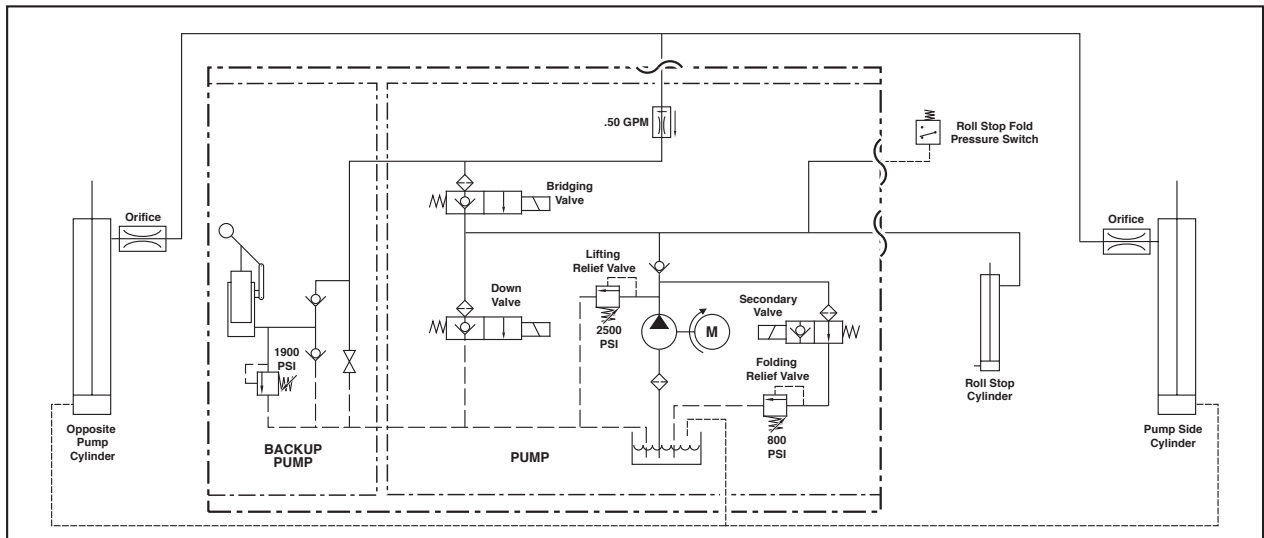
Lift Electrical Schematic



Lift Wiring Diagram



Hydraulic Schematic



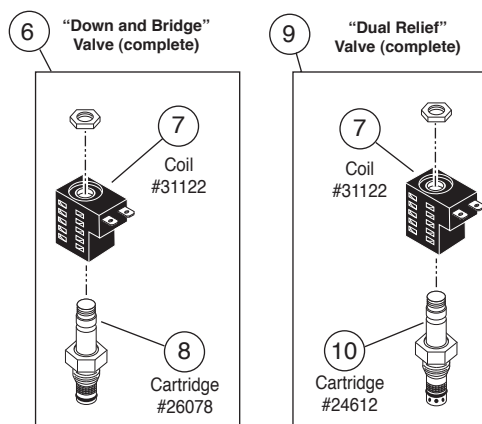
Description	Symbol	Description	Symbol
Fixed Displacement Pump		Hydraulic Port	
Pump Motor		2 Way 2 Position Solenoid Valve	
Backup Pump		Pressure Compensated Flow Control	
Single Acting Cylinder		Relief Valve	
Check Valve		Filter Screen	
Unfold Orifice		Vented Reservoir	
Manual Shutoff Valve		Orifice	
Pressure Switch			

Hydraulics Parts List

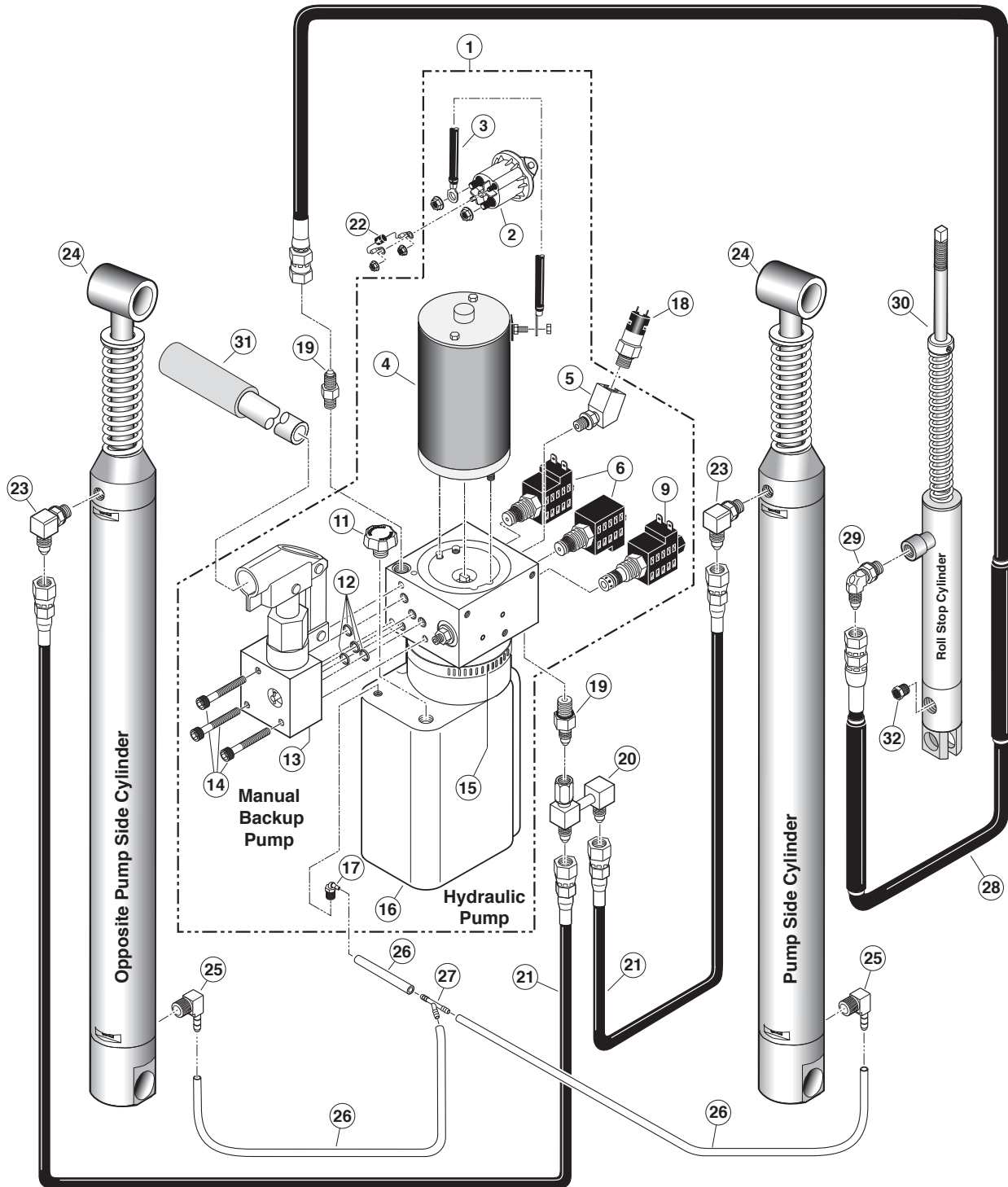
Item	Qty.	Description	Part #
1	1	Pump Assembly (M268-0113) 12V - with Reservoir/with Backup Pump)	31038-12V
2	1	Solenoid, 4-Post Trombetta (Flat Base)	31374
3	1	Power Cable, Up Solenoid to Motor	29049
4	1	Motor, Pump - 12 Volt - Low RPM	31350
5	1	Elbow, 65° - Male 7/16-20 SAE O-Ring to 7/16-20 SAE O-Ring Boss	26578
6	2	Valve Assembly, "Down / Bridge" (complete)	31348K
7	3	Coil (only), "Down / Bridge" Valve - (shown below)	31122
8	2	Cartridge (only), "Down / Bridge" Valve - (shown below)	26078
9	1	Valve Assembly, "Dual Relief" (complete)	31120K
10	1	Cartridge (only), "Dual Relief" Valve - (shown below)	31121
11	1	Cap, Reservoir Filler	16935
12	4	O-Ring (only), Hand Pump Mounting	17351
13	1	Hand Pump (Backup) with O-Rings (Item 12)	26074
14	3	Screw, 1/4-20 x 2-1/4", Allen Head	26080
15	1	Clamp, Reservoir - H-48 (M259)	17069
16	1	Reservoir, Hydraulic Fluid	16934
17	1	Fitting, 90° - 1/8" NPT x 1/8" Barb - Plastic	87563
18	1	Switch, Pressure, 7/16-20 SAE O-Ring Male	31199
19	2	Fitting, Male 7-16-20 SAE O-Ring to Male 7/16-20 JIC 37°	24504
20	1	Elbow, (1) Female 7/16-20 JIC 37 Swivel - (2) Male 7/16-20 JIC 37°	26579
21	2	Hose Assembly, 1/8" (Opposite Pump Side)	16004A-086
22	1	Diode Assembly, Up Solenoid	73906A
23	2	Elbow, 90°, 7/16-20 SAE O-Ring Male - 7/16-20 JIC 37° Male, Orifice	26667
24	2	Cylinder ✓	C1514.3-9407
25	2	Elbow, 90°, 1/4" NPT Male to 1/4" Barbed	15150
26	1	Hose, Thermal Plastic - Black, 1/8" I.D.	23742R*
27	1	Connector, Plastic "Y", 1/8" O.D.	18877
28	1	Hose Assembly, 3/16" w/Two Guards (NL955SE3143 Only)	915-2601-155.5-2
	1	Hose Assembly, 3/16" w/Two Guards (NL955SE3147 Only)	915-2601-159.5
	1	Hose Assembly, 3/16" w/Two Guards (NL955SE3151 Only)	915-2601-163.5
29	1	Fitting, 90° - Male 9/16-18 SAE O-Ring to Male 7/16-20 JIC 37°	87622
30	1	Cylinder, Roll Stop	25309-05A
31	1	Handle with Grip	17206A
32	1	Breather Vent, 1/4" NPT	26200-2

✓ **Seal Kits:** If repairing a cylinder, order Seal Kit #1500-0500P.

* Raw material items ordered and priced per inch (order specified length).



Hydraulics Diagram



Pump Module Parts List

Item	Qty.	Description	Part No.
	1	Pump Module, 12 Volt, Rear (for a complete module, also order Items 9, 23, 25-27, 29-32 & 45-48)	955-5520RNA
1	1	Pump Assembly (M268-0113) 12V-120G - Dual Relief / ARS (Includes Items 2 & 3)	31038-12V
2	1	Power Cable, Up Solenoid to Motor	29049
3	1	Solenoid, Up - 4-Post - Trombetta (Flat Mount)	31374
4	1	Diode Assembly, Up Solenoid	73906A
5	2	Nut, #10-32, Serrated Flange	83080
6	2	Fitting, Male 7/16-20 O-Ring to Male 7/16-20 JIC 37°	24504
7	1	Elbow, Female Swivel 7/16-20 JIC 37° to (2) Male 7/16-20 JIC 37°	26579
8	1	Switch, Pressure	31199
9	1	Control, Hand Pendant Assembly - Standard ♦See note below	33658A
10	4	Snap Rivet, .122" HL/.158"-.197" Thick	25759
11	1	Control Board Assembly	100175-001
12	12	Standoff, Snap-In	31011
13	1	Switch, Push Button	31753
14	1	Housing, Pump	955-5519N
15	1	Diode, Green LED, Panel Mount	29545
16	2	Washer, 5/16" Flat	10063
17	4	Bolt, 5/16-18 x 1/2", Nylock, Hex * See note below	10012
18	1	Cable, Ground	22166A
19	2	Washer, 5/16" External Tooth	16368
20	1	Beeper, Continuous - High Output	33251
21	1	Switch, Toggle w/Gold Contacts	31787
22	1	Stud, Power Feed	26084
23	1	Rubber Boot, Red ♦See note below	82046
24	1	Harness, Lift Interlock Connection	32639A
25	1	Wire Assembly, Lift Stowed Connection ♦See note below	32638A
26	1	Pump Handle with Grip ♦See note below	17206A
27	1	Cover, Pump Housing ♦See note below	955-0513N
28	8	Rivet, Pop, SD64BS - 3/16" - .06"/.13"	11512
29	2	Clamp, Spring ♦See note below	12350
30	5	Screw, #8 x 3/8" Pan Head ♦See note below	10075
31	2	Clip, Cable, 1/2" Plastic ♦See note below	10092
32	2	Snap Rivet, 3/16", Nylon, Black ♦See note below	25973
33	1	Cover, Top / Switch Panel - Pump Housing (Panel, Switches and Harness Complete 955-5537NA)	955-5521N
34	1	Switch, S.P.D.T., Toggle, Yellow (Open / Close)	31917
35	1	Switch, S.P.D.T., Toggle, Orange Fold / Unfold)	31918
36	1	Switch, S.P.D.T., Toggle, Red (Up / Down)	31919
37	1	Connector, Plastic Y - 1/8" OD (Not shown)	18877
38	1	Harness, Interlock (Not shown - see Wiring Diagram)	955-0531NA
39	1	Harness, Outputs (Not shown - see Wiring Diagram)	955-0533NA
40	1	Harness, Power - Stow Interlock (Not shown - see Wiring Diagram)	985-4530NA
41	1	Harness, Jumper (Not shown - see Wiring Diagram)	955-0541NA
42	1	Harness, Hand Control to Circuit Board (Not shown - see Wiring Diagram)	100245-001
43	1	Cable, Pump Module Power Hookup (Not shown - see Wiring Diagram)	26082A-4
44	1	Decal, Lift Power - On/Off (Not shown)	21494
45	1	Decal, Manual Operation Instructions ♦(Not shown)	31894
46	1	Decal, Platform Relief Valve ♦(Not shown)	32201
47	1	Decal, Warning - Control Board Damage - ESD ♦(Not shown)	30787
48	1	Decal, LCD Lift Codes - NHTSA DPA ♦(Not shown)	32410
49	1	Decal, Instructions & Warning Hydraulic Pressure Switch ♦(Not shown)	27154

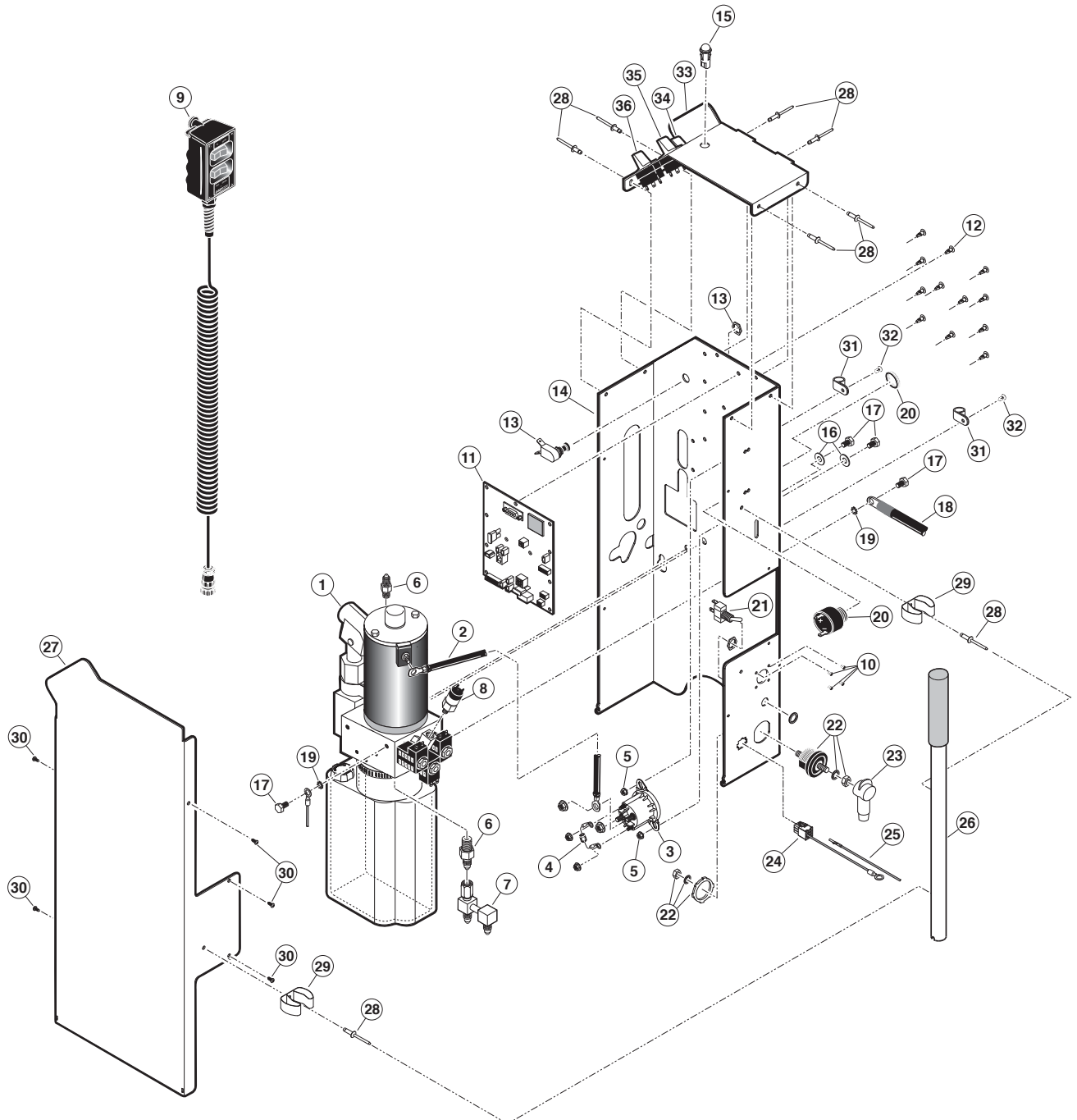
* Apply red #271 Thread Locker Loctite® to the four hex bolts (item 17) if a blue nylon patch is not present on the bolts when retrofitting an M268-0113 pump assembly. Loctite® is available from The Braun Corporation under part number 11522.

♦ Indicates items available for replacement part purposes **only**. These items **are not** included with replacement pump modules.

Pump Module Diagram

Pump Mounting Bolts

Apply red #271 Thread Locker Lock-tite® to the four hex bolts (item 17) if a blue nylon patch is not present on the bolts when retrofitting an M268 pump assembly. Loctite® is available from The Braun Corporation under part number 11522-1.



Repair Parts List

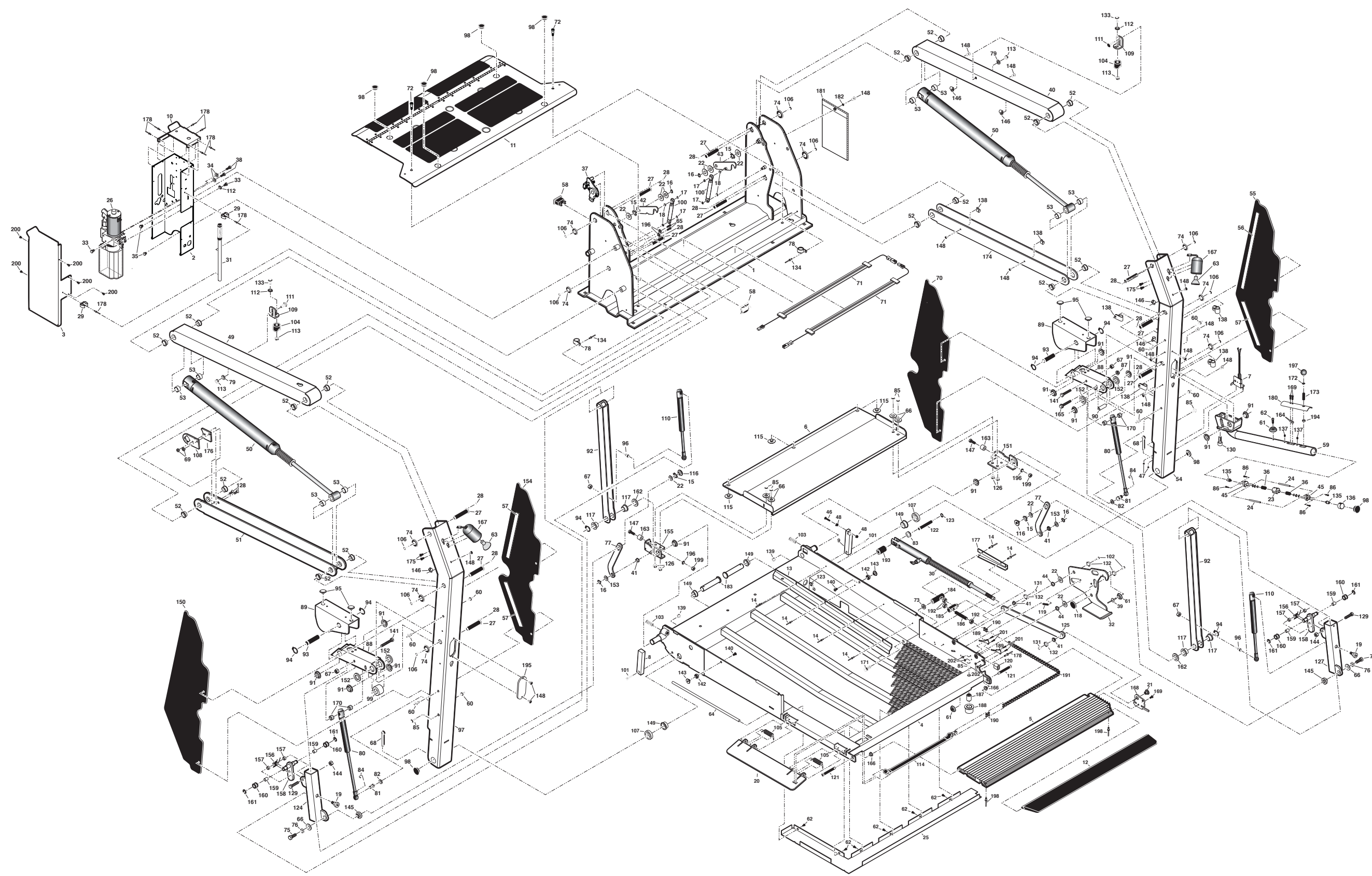
Part Numbers of Items Dedicated per Lift Model

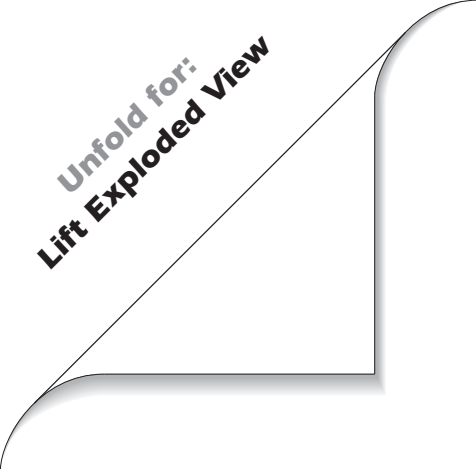
Item	Qty.	Description	NL955SE3143	NL955SE3147	NL955SE3151
1	1	Base Weldment	955R7142NW31	955R7142NW31	955R7142NW31
2	1	Housing, Pump, Rear	955-0519N	955-0519N	955-0519N
3	1	Cover, Pump Hsg	955-0513N	955-0513N	955-0513N
4	1	Platform Weldment	955-63143FNW	955-63147FNW	955-63151FNW
5	1	Outer Barrier	915F4312-31	915F4312-31	915F4312-31
6	1	Inner Rollstop	955-0147N-31	955-0147N-31	955-0147N-31
7	1	Bridge Switch Assembly	31010FA	31010FA	31010FA
8	1	Block, Platform Stop - Bridging - Rear	25778	25778	25778
9	1	Block, Platform Stop - Bridging - Front	900-0311	900-0311	900-0311
10	1	Panel, Switch Mount	955-0521N	955-0521N	955-0521N
11	1	Base, Cover	955-5142CNA31	955-5142CNA31	955-5142CNA31
12	1	Rubber Nose, 31"	24603-31F	24603-31F	24603-31F
13	1	Guard, Wiring, Platform	955-2368N43	955-2368N47	955-2368N51
14	Per Lift	Rivet, Pop, 1/8" - .25"/.31"	13906 (Qty. 6)	13906 (Qty. 6)	13906 (Qty. 7) 6 shown

Part Numbers of Items Identical on All Lift Models

Item	Qty.	Description	Part No.	Item	Qty.	Description	Part No.
15	4	Washer, Finger, Disc Spring	27276	109	2	Bracket, Mounting, Quiet Ride	915-0392
16	4	Snap-Ring, 1/2"	13273	110	2	Gas Spring, 12.2" Extended/8.3" Compressed	30550A
17	4	Snap-Ring, 5/16"	24570	111	2	Bolt, 5/16-18 x 3/4", Carriage, Black	15858BK
18	4	O-Ring, 5/16" I.D. x 1/16" O.D.	26614	112	3	Washer, 5/16", External Tooth	16368
19	2	Screw, Socket Head, 3/8-16 x 1/2" with 1/2" Shoulder	25929	113	4	Nut, 5/16-18 Hex	10058
20	1	Roll Stop Weldment, Side	955-2346W	114	1	Belt Assembly, Nylon Webbing, #41 Chain	26745A
21	1	Pivot, Roll Stop Lever	24550	115	3	Bearing, UHMW, Flat, Thin, Black	916-5406
22	10	Washer, .516" I.D. x 1" O.D. x .0269", Auto BK	15328	116	2	Pivot, Bridge Plate Lever, Upper, Inside	916-5433
23	1	Slide, Handrail Switch	955-2457	117	4	Bearing, Flange - 3/4" x 1/2"	24027
24	2	Rail, Handrail Slide	955-2464	118	1	Spacer, UHMW, Latch	950-7760
25	1	Guard, Chain Plate	955-2368-31	119	1	Spring, 1/4" x 1" Extension w/Hooks	10774
26	1	Pump Assembly	31038-12V	120	1	Tubing, Polyurethane - 1/4" I.D. x 1/2" O.D. x .81"	28630R000.81
27	10	Pin, Pivot, Parallel Arm	917-0403	121	2	Pin, Clevis, 3/8" x 3", Black	24932BK
28	10	Screw Drive #8 x 3/16" Long Black	31086BK	122	1	Pin, Platform Cylinder	955-2414
29	2	Clamp, Spring, Pump Handle	12350	123	2	Ring, Snap, 1/2", External, .035" Thick	20946
30	1	Cylinder, Roll Stop, Assembly	915-5318A	124	1	Weldment, Tube-IB Fold Arm-Rear	918-0625RNNW
31	1	Pump Handle w/Grip	17206A	125	1	Lever, Roll Stop Latch (Assy 955-2345NA)	955-2345N
32	1	Latch, Roll Stop	955-4343FNA	126	4	Nut, 3/8-16, Hex, Lock, Jamb	20926
33	2	Bolt, 5/16-18 x 1/2" Nylock, Hex	10012	127	1	Weldment, Tube-IB Fold Arm-Front	918-0625FNNW
34	2	Washer, 5/16" Flat	10063	128	2	Screw, 1/4-20 x 3/4" FHSCS/SS	26986
35	2	Bolt, 3/8-16 x 3/8" Nylock, Hex	17633	129	2	Bolt, 5/16-18 x 1 1/2" Hex Head, Cap	10014
36	2	Spring, .484" O.D. x .412" I.D. x 1.56"	26715	130	1	Bolt, 7/16-20 x 1 1/4", SHCS, w/Nylock Patch	32229
37	1	Assembly, Rotary Position Sensor +/- 65 Stow	31844RA	131	2	Screw, #10-32 x 3/8", Flat Head, Hex	24537
38	2	Bolt, 5/16-18 x 3/4" Nylock, Hex	29608	132	3	Adapter, Cylinder/Roll Stop Lever-Out	990-0341
39	1	Rivet, Pop, SD68 BSLF-3/16" - .38"/.50"	15244	133	2	Bolt, 5/16-18 x 3/4", Button Head, Soc Cap Hd	24440
40	1	Parallel Arm Assy, Top-Front w/Bearings	955-2422FA43	134	2	Rivet, Pop, 3/16" - .25"/.38", Black	14993
41	4	Bearing, Flange, 1/2" x 1/4"	24442	135	2	Switch, S.P.N.O. Pushbutton, Gold Contacts (w/Nuts)	32060
42	1	Weldment, Latch, Lift/Tite, Rear	27013RW	136	1	Slide, Handrail Handle	955-2459
43	1	Weldment, Latch, Lift/Tite, Front	27013FW	137	2	Screw, #10-32 x 5/16, Set	11562
44	2	Spring Disk, Stainless - .795" O.D. / .531" I.D.	36384	138	6	Clamp, Cable, 1/2", Plastic	10092
45	2	Collar - Handrail Switch	955-2458	139	2	Nut, 5/16-18, Top Lock, Black	26324BK
46	1	Screw, #8-32 x 1", Mach. Truss Head	19912BK	140	2	Bolt, 1/4-20 x 1/2", Button Head Socket	15733
47	2	Nut, #4-40 w/Lockwasher	19537	141	2	Bolt, 3/8-16 x 2", Hex Head, Cap	10027
48	2	Nut, #8-32, Hex	10777	142	2	Roller Assembly	1000-2395A
49	1	Parallel Arm Assy, Top - Rear	955-5422RNA-43	143	2	Roller Retainer	915-5353
50	2	Cylinder, 1.625"/29.146" Retracted	1514-3-9407	144	2	Nut, 5/16-18 Hex, Lock	11387BK
51	1	Parallel Arm Assy, Bottom Rear	955-7458NA	145	2	Pivot, Bridge Plate Lever, Upper-Outer	916-5434
52	16	Bearing, Flange, 3/4" x 3/8"	24011	146	5	Clamp, 1/4" I.D. - Nylon Loop	84396
53	8	Bushing, 3/4" I.D. x 1/2"	900-0456	147	2	Bolt, 1/4-20 x 1" Hex	10001
54	1	Vertical Channel Weldment, Front, 48"	955-0442FNW	148	15	Rivet, Snap, .201" x .256"/.295"	26362
55	1	Cover, Plastic, Parallel Arm, O/S Front-w/Tape	915-0704NA	149	4	Bearing, Flange, 1" x 1/2-16FUD08	28031
56	2	Tape, 1" Wide S-Face Foam, x 14" (1 Shown)	82015R014	150	1	Cover, Plastic, Parallel Arm, O/S Rear-w/Tape	915-0702NA
57	6	Tape, 1" Wide S-Face Foam, x 10" (3 Shown)	82015R010	151	1	Weldment, Bridgeplate Bracket, Front	985-0431FNNW
58	1	Cycle Counter-LCD Without Reset	30547	152	4	Spacer, Handrail, .375" Thk. UHMW	995-0301
59	1	Weldment, Switch Arm	955-0402NW	153	2	Washer, .516" I.D. x .75" O.D. x .250", Black	25336
60	8	Rivet, Push In - 8MM	30063	154	1	Cover, Plastic, Parallel Arm, I/S Rear-w/Tape	955-0703NA43
61	3	Bumper, Rubber, 31/32" O.D.	10950	155	1	Weldment, Bridgeplate Bracket, Rear	985-0431RNNW
62	7	Screw, #8-18 x 1/2", Self-Tap, Phillips	13583	156	2	Spring, Torsion - .366 I.D. x .05"	30386
63	2	Bulb, Light 20-W, Halogen Reflector	31060	157	4	Spacer, IB Lock	30394
64	1	Rod, Roll Stop Retainer	955-2399	158	2	Weldment, IB Lock	955-0630NWN
65	2	Screw, 1/4-20 x 3/4", Button Head, Socket Cap	81068-000	159	4	Bearing, 3/8" I.D. x 1/2" Long	30405
66	2	Washer, 3/8" Flat, Black	10064	160	4	Roller, 65" O.D. x 1/2" Long	985-0631N
67	4	Nut, 3/8-16, Hex Lock	13617	161	4	E-Clip, 3/8" Shaft	84383
68	2	Cotter Pin, 1/4" x 2", Black	15886BK	162	2	Spacer, Handrail, .230" Thk. UHMW	911-5301
69	2	Nut, 1/4-20 Hex Lock	10775	163	2	Bumper, 1" x 1/2" LG Blk UHMW - Bridgeplate	33654
70	1	Cover, Plastic, Parallel Arm, I/S Front-w/Tape	955-0701NA43	164	2	Spacer, .365 O.D. x .203" I.D. x .188" Long	955-2463
71	2	Threshold Strip Switch	31221A	165	1	Bolt, 5/16-18 x 2 HH Flange GD8/Auto-BK	25130
72	2	Bolt, Shoulder, 5/16 x 5/8 - 1/4"-20	31816	166	2	Bearing, Flange, 3/8" x 1/4" - Plastic	24028
73	1	Washer, .4 I.D. x .810 O.D. x .12/Auto-BK	24536	167	2	Light Assy, Vertical Channel	31062A
74	10	Washer, 1/2" Flat Black Zinc	25346	168	1	Tab Assy, Roll Stop, Flap Cylinder	955-6367FNA
75	2	Bolt, 3/8-16 x 1", Hex	10025	169	3	Screw, 10-32 x 5/8", Pan Head Phillips, Thd Cut	26714
76	2	Washer, 3/8", Lock, Black	10069BK	170	4	Spacer, UHMW-.75" O.D. x .39" I.D. x .25"	30227
77	2	Lever, Inboard Barrier	955-0404N	171	1	Bolt, 3/8-16 x 3/4", Soc. Hd. Cap Screw Bk.	26259
78	4	Clamp, Insulate, 1 3/8" I.D.	29765	172	1	Washer, 3/8" I.D. x 5/8" O.D. x .093" T-Rubber	27230
79	2	Washer, 5/16" Lock, Black	10068	173	1	Screw, 3/8 x 1 1/4", Set	82720
80	2	Gas Spring, Fold Arm	29186	174	1	Parallel Arm Assy, Bottom w/Bearings-Front	915-4457FNA
81	2	Ball Stud, Gas Spring, 13MM x 3/8-16 F. Thread	29185	175	4	Screw, #10-32 x 1/2" Button Head, Socket, Cap	30375WP
82	2	Washer, 3/8", Lock	10069	176	1	Position Sensor Spacer	31092
83	1	Spacer, Flap Cylinder, .184" Thick	915-0416	177	1	Guard, Wiring, Platform, OB	955-2369N
84	2	Clip, Safety, 3/8-16 x 3/4", Flange	12608	178	6	Rivet, Pop, 3/16" - .13/25" - SD64BS	11513
85	7	Bolt, 3/8-16 X 3/4", Flange Button Head, Socket Cap	25171	179	1	Rivet, Snap, Black, .201" Hole x .217"/.256" Thick	25973
86	4	Screw, #4-40 x 3/4", Rd Hd.	11483	180	1	Cover, Handrail Slot	955-2404
87	1	Nut, 5/16-18, Serrated Flange	25131	181	1	Bag, Vinyl - 7" x 10"	31174
88	2	Arm, Slide Support	985-0612N	182	1	Washer, #10, Flat, Auto BK	11541
89	2	Slide, Platform, Rotate	915-2606N	183	2	Pin, Platform Pivot	975-2325
90	1	Spacer, .5" O.D. x .334" I.D. x 1.515" LG	25132	184	1	Pivot, Front, Roll Stop Cylinder	955-2352
91	12	Bearing, Flange, 3/4" x 1/4"	24012	185	1	Adapter, Cylinder/Roll Stop Lever Adapter	955-2344
92	2	Weldment, Platform Pivot Arm - 48"	955-2640NWN-BKN	186	1	Bolt, Chain #41-7/16-14 x 2.5"	14600Z
93	2	Pin, Pivot, Lower Arm	900-0413N	187	1	Axle, Bearing	955-2782
94	6	Ring, Snap, 3/4", External	18657	188	1	Bearing Assembly	205-1780
95	4	Bearing, UHMW, Flat, 1.226"	205-1760	189	2	Harness, Sensor, Cherry, 60" w/Plug	30433A60
96	2	Ball Stud, 10MM	21301	190	1	Link, Chain, #41 Roller	10454
97	1	Vertical Channel Weldment, Rear	955-0442RNNW	191	1	Chain, #41 Roller	10455R025
98	7	Plastic End Cap, 1" I.D. x 1 1/4" O.D.	20474	192	3	Nut, 7/16-14 Hex Jam, Auto-BK	14414
99	1	Spacer, UHMW, Handrail	955-0301N	193	1	Spacer, Flap Cylinder, 1.319" Thick	955-2415
100	2	Spring, Damper, Retract	26963	194	1	Spacer, 0.490 O.D. x 0.390 I.D. x 0.188 L	955-2462
101	2	Bolt, 5/16-18 x 1 1/4" Low Socket Hd., Cap, Bk.	26327	195	1	Cover, Switch Arm Hole	955-0101
102	2	Screw, #10-32 x 1/2" FHDHXS - Auto Blk - w/Patch	17192P	196	4	Washer, Star - 1/4" Ext Tooth - Lock	83588
103	2	Screw, 1/2-20 x 1 1/2" Set Lock, Black	18663	197	1	Knob, Lever BLK Plastic 3/8-16	84269
104	2	Block, Guide-Platform Stow	28593	198	2	Rivet, Pop, 3/16" x .06"/.13"	11512
105	2	Spring, 5/8" O.D. Torsion	10892	199	2	Nut, 1/4-20 Hex	10057
106	10	Screw, 5/16-18 x 3/4", SHFS	25527	200	5	Screw, #8 X 3/8" Pan Hd Metal / Auto Bk	10075
107	2	Spacer, UHMW, Vertical Channel	995-0320	201	4	Screw, #4-40 x 1/4" Phillips Head	11480
108	1	Position Sensor Collet	37229	202	4	Weld Nut, #4-40 x 1/8" Barrel	32949

Lift Exploded View





NOTES

This page intentionally left blank.

Braun® Limited Warranty

WARRANTY COVERAGE AND WARRANTY COVERAGE TIME PERIODS

The Braun Corporation ("Braun") warranty covers certain parts of this wheelchair lift for three (3) years or 10,000 cycles and the cost of labor to repair or replace those parts for one (1) year or 3,000 cycles. This limited warranty covers substantial defects in materials and workmanship of the lift, provided that the lift is operated and maintained properly and in conformity with the owner's manual. The warranty period begins on the date that the product is delivered to the first retail purchaser by an independent, authorized dealer of Braun, or, if the dealer places the product into any type of service prior to retail sale, on the date the dealer first places the product in such service. This limited warranty applies only to the first purchaser. It may not be transferred.

WHAT BRAUN WILL DO TO CORRECT PROBLEMS

In the event that a substantial defect in material or workmanship, attributable to Braun, is found to exist during the first year of warranty coverage, it will be repaired or replaced, at Braun's option, without charge for parts or labor to the owner, in accordance with the terms, conditions and limitations of this limited warranty. If the substantial defect in material or workmanship, attributable to Braun, is found to exist during the second or third year of warranty coverage, it will be repaired or replaced, at Braun's option, without charge to the owner for parts, only, in accordance with the terms, conditions and limitations of this limited warranty. The cost of labor for any repair or replacement in the second and third year of warranty coverage is the sole responsibility of the owner. This warranty does not cover labor costs in the second or third year of coverage.

Braun's obligation to repair or replace defective materials or workmanship is the sole obligation of Braun under this limited warranty. Braun reserves the right to use new or remanufactured parts of similar quality to complete any work, and to make parts and design changes from time to time without notice to anyone. Braun reserves the right to make changes in the design or material of its products without incurring any obligation to incorporate such changes in any previously manufactured product. Braun makes no warranty as to the future performance of this product, and this limited warranty is not intended to extend to the future performance of the product. In addition, the owner's obligation to notify Braun, or one of its authorized, independent dealers, of a claimed defect does not modify any obligation placed on the owner to contact Braun directly when attempting to pursue remedies under state or federal law.

LIMITATIONS, EXCLUSIONS AND DISCLAIMER OF IMPLIED WARRANTIES

ANY IMPLIED WARRANTY THAT IS FOUND TO ARISE BY WAY OF STATE OR FEDERAL LAW, INCLUDING ANY IMPLIED WARRANTY OF MERCHANTABILITY OR ANY IMPLIED WARRANTY OF FITNESS, IS LIMITED IN DURATION TO THE TERMS OF THIS LIMITED WARRANTY AND IS LIMITED IN SCOPE OF COVERAGE TO THE SCOPE OF COVERAGE OF THIS LIMITED WARRANTY.

Braun disclaims any express or implied warranty, including any implied warranty of fitness or merchantability, on items excluded from coverage as set forth in this limited warranty. Braun makes no warranty of any nature beyond that contained in this limited warranty. No one has authority to enlarge, amend or modify this limited warranty, and Braun does not authorize anyone to create any other obligation for it regarding this product. Braun is not responsible for any representation, promise or warranty made by any independent dealer or other person beyond what is expressly stated in this limited warranty. Any selling or servicing dealer is not Braun's agent, but an independent entity.

BRAUN SHALL NOT BE LIABLE FOR ANY INCIDENTAL OR CONSEQUENTIAL DAMAGES THAT MAY RESULT FROM BREACH OF THIS LIMITED WARRANTY OR ANY IMPLIED WARRANTY. THIS EXCLUSION OF CONSEQUENTIAL AND INCIDENTAL DAMAGES SHALL BE INDEPENDENT OF ANY FAILURE OF THE ESSENTIAL PURPOSE OF ANY WARRANTY, AND THIS EXCLUSION SHALL SURVIVE ANY DETERMINATION THAT THIS LIMITED WARRANTY OR ANY IMPLIED WARRANTY HAS FAILED OF ITS ESSENTIAL PURPOSE. This warranty does not cover, and in no event shall Braun be liable for towing charges, travel, lodging, or any other expense incurred due to the loss of use of the product or other reason.

Braun® Limited Warranty

Some states do not allow limitations on how long an implied warranty lasts, or the exclusion or limitation of incidental or consequential damages, so the above limitations or exclusions may not apply to you.

HOW TO GET SERVICE

To obtain warranty service the owner must do all of the following:

1. Notify an authorized service center, of the claimed defect attributable to Braun, within the warranty coverage period designated above.
2. Provide the notification mentioned in (1), above, within ten (10) days of when the owner discovered, or should have discovered, the claimed defect.
3. Promptly schedule an appointment with and take the product to an authorized service center for service.
4. Pay any transportation costs and all expenses associated with obtaining warranty service.

Since Braun does not control the scheduling of service work at the independent dealerships you may encounter some delay in scheduling or completion of work. If you need assistance you may contact Braun, at 631 West 11th Street, Winamac, Indiana 46996; 1-800-THE-LIFT, (843-5438).

If two (2) or more service attempts have been made to correct any covered defect that you believe impairs the value, use or safety of the product, or if it has taken longer than thirty (30) days for repairs to be completed, you must, to the extent permitted by law, notify Braun directly, in writing, at the above address, of the unsuccessful repair(s) of the alleged defect(s) so that Braun can become directly involved in providing service pursuant to the terms of this limited warranty.

WHAT IS NOT COVERED

This Limited Warranty does not cover any of the following: defects in materials, components or parts of the product not attributable to Braun, any material, component or part of the product that is warranted by another entity (Note: the written warranty provided by the manufacturer of the material, component or part is the direct responsibility of that manufacturer); items that are added or changed after the product leaves Braun's possession; additional items installed at any dealership, or other place of business, or by any other party, other than Braun; normal wear, tear, usage, maintenance, service, periodic adjustments, the effects of condensation or moisture from condensation; mold or any damage caused by mold; imperfections that do not affect the product for its intended purpose; items that are working as designed but that you are unhappy with; problems related to misuse, mishandling, neglect or abuse, including failure to maintain the product in accordance with the owner's manual, or other routine maintenance such as inspections, lubricating, adjustments, tightening of screws, sealing, wheel alignments or rotating tires; damage due to accident or collision, including any acts of weather or damage or corrosion due to the environment; theft, vandalism, fire, or other intervening acts not attributable to Braun; damage resulting from tire wear or tire failure; defacing, scratches, dents or chips on any interior or exterior surface of the product, including those caused by rocks or other road hazards, damage caused by off road use, overloading or alteration of the product, or any of its components or parts.

Defects and/or damage to interior and exterior surfaces and other appearance items may occur at the factory or when the product is in transit. These items are usually detected and corrected at the factory or by a dealer prior to delivery to the purchaser. You must inspect the product for this type of damage when you take delivery. If you find any such defect or damage you must notify the selling dealer, or Braun, at the time of delivery to have these items covered by this limited warranty and to have work performed on the items at no cost to you as provided by this limited warranty.

Braun® Limited Warranty

EVENTS DISCHARGING BRAUN FROM OBLIGATION UNDER WARRANTY

The following shall completely discharge Braun from any express or implied warranty obligation to repair or replace anything and void this warranty: misuse, neglect, collision, accidents, failure to provide routine maintenance (See Owner's Manual), unauthorized alteration, off road use, Acts of Nature, damage from weather or the environment, theft, vandalism, tampering, fire, explosions, overloading the product and odometer tampering.

LEGAL REMEDIES

Any action to enforce any portion of this limited warranty, or any implied warranty, must be commenced within six (6) months after expiration of the warranty coverage period designated above or the action will be barred because of the passage of time. Any performance of repairs shall not suspend this limitation period from expiring. Any performance of repairs after the warranty coverage period has expired, or performance of repairs regarding any thing excluded from coverage under this limited warranty shall be considered "good will" repairs, and they will not alter the terms of this limited warranty, or extend the warranty coverage period or the filing limitation period in this paragraph. In addition, since it is reasonable to expect that the product will need some service during the warranty period, this warranty does not extend to future performance. It only sets forth what Braun will do and does not guarantee anything about the product for any time period. Nothing in this warranty, or any action of Braun, or any agent of Braun, shall be interpreted as an extension of any warranty period or the filing limitation period in this paragraph. Some states do not allow a reduction in the statute of limitations, so this reduction may not apply to you.

WARRANTY REGISTRATION and MISCELLANEOUS

Your warranty registration records should be completed and delivered to the appropriate companies, including the Braun Delivery Checklist & Warranty form. That form must be returned to Braun within twenty (20) days of purchase. The Braun warranty will not be registered unless this warranty registration is completed and received by Braun. Failure to file this warranty registration with Braun will not affect your rights under this limited warranty as long as you can present proof of purchase, but it can cause delays in obtaining the benefits of this limited warranty, and it changes the start date of the warranty to the date of final assembly of the product by Braun.

Braun agrees to repair or replace any of its factory installed parts found to have substantial defects within the appropriate warranty period designated above, provided that the repair is authorized by Braun and carried out by an authorized service center (a Braun labor schedule determines the cost allowance for repairs). Braun will not honor any warranty claim for repairs or replacement of parts unless the claim is submitted with the appropriate paperwork, and the work is completed by an independent, factory authorized service center. The appropriate paperwork can be obtained by written or phone contact with Braun at the contact information in this warranty.

Braun reserves the right to designate where any warranty work can be performed. Braun also reserves the right to examine any defective workmanship or part prior to giving any authorization for warranty work. Braun's return authorization procedure must be adhered to in order to process any warranty claims.

THIS WARRANTY GIVES YOU SPECIFIC LEGAL RIGHTS. YOU MAY ALSO HAVE OTHER RIGHTS THAT VARY FROM STATE TO STATE.

NOTES

This page intentionally left blank.

"Providing Access to the World"®



**Over 300 Braun
Dealers Worldwide**

 **THE BRAUN
CORPORATION®**
"Providing Access to the World"®



International Corporate Hdqrs: P.O. Box 310 Winamac, IN 46996 USA
1-800-THE LIFT® (574) 946-6153 FAX: (574) 946-4670

Service Manual for:
NL955

Millennium
Series

Private Use Wheelchair Lifts
Series A7

Patent #5,261,779

Patent #6,599,079

Patent #7,422,408

Patent #6,238,169

Patent #6,692,217

Patent #7,441,995

Patent #6,464,447

Patent #7,306,422

Patent #7,530,226

BRAUN
MILLENNIUM
SERIES

Braun NL955 Series

37772 Rev A
June 2012



"Providing Access to the World"®

International Corporate Hdqrs: P.O. Box 310 Winamac, IN 46996 USA
1-800-THE LIFT® (574) 946-6153 FAX: (574) 946-4670



All illustrations, descriptions and specifications in this manual are based on the latest product information available at the time of publication. The Braun Corporation reserves the right to make changes at any time without notice.

© The Braun Corporation