

SERVICE MANUAL

EN

# SEDEO ORIGINAL



handicare

© 2011 Handicare

All rights reserved.

The information provided herein may not be reproduced and/or published in any form, by print, photo print, microfilm or any other means whatsoever (electronically or mechanically) without the prior written authorisation of Handicare.

The information provided is based on general data concerning the constructions known at the time of the publication of this manual. Handicare executes a policy of continuous improvement and reserves the right to changes and modifications.

The information provided is valid for the product in its standard version. Handicare cannot be held liable for possible damage resulting from specifications of the product deviating from the standard configuration.

The available information has been prepared with all possible diligence, but Handicare cannot be held liable for possible errors in the information or the consequences thereof.

Handicare accepts no liability for loss resulting from work executed by third parties.

Names, trade names, etc. used by Handicare may not, as per the legislation concerning the protection of trade names, be considered as being available.

1	Introduction Service manual Sedeo Original .....	4
1.1	This manual .....	4
1.2	Identification of the product .....	4
1.3	Symbols used in this manual .....	5
2	Safety .....	6
2.1	Personnel qualification .....	6
2.2	Cautions and warning statements .....	6
2.3	Used decals on the seating system .....	6
3	Tools, parts and components .....	7
3.1	Tools .....	7
4	Spare parts.....	8
4.1	Use of the parts lists .....	8
4.2	Overview exploded views .....	9
	01a Seat frame / Ibis .....	10
	01b Seat frame / Puma YeS .....	11
	02 Upper part Ibis .....	12
	03 Seat / backrest / calf plate .....	13
	04a Gasspring backrest adjustment .....	16
	04b Gasspring backrest adjustment - old / Puma YeS .....	17
	05 Electrical backrest adjustment .....	18
	06 Mounting bracket for legrest .....	19
	07a Central legrest / Ibis .....	20
	07b Central legrest / Puma YeS .....	21
	08 Standard legrest .....	22
	09 Comfort mechanical legrest .....	23
	10 Comfort electrical legrest .....	24
	11a Armrests / Ibis .....	26
	11b Armrests / Puma YeS .....	27
	12 Headrest .....	28
	13 LED lighting .....	29
5	Service instructions .....	30
5.1	Maintenance plan .....	30
5.2	Assembly replacement and adjustment instructions .....	31
6	Trouble shooting.....	32
7	Specifications .....	33
7.1	CE declaration of conformity .....	33
8	Warranty .....	34
8.1	Definitions of terms .....	34
8.2	Warranty period table .....	34



### 1.3 Symbols used in this manual

#### Warning symbol



Follow the instructions next to this symbol closely.

Not paying careful attention to these instructions could result in physical injury or damage to the seating system or the environment.

#### ATTENTION!

Suggestions and advice that help tasks or procedures involved to be carried out more easily.

#### Reference symbol



The symbol refers to a separate user manual. This reference will indicate the specific user manual and the section to which is being referred.

## 2 Safety

### 2.1 Personnel qualification

Service technicians:

Repairs may only be carried out by trained and authorised service technicians.

During the execution of their work, they are at all times fully responsible for the fulfilment of locally applicable safety guidelines and standards.

Temporary employees and persons in training may only carry out repair and replacement work under the supervision of an authorised service technician.

### 2.2 Cautions and warning statements

#### Safety

Safety information is indicated with the warning symbol.

- Follow the instructions carefully next to these warning symbols! Not paying careful attention to these instructions could result in physical injury or damage to the seating system or the environment. Where ever possible, safety information is provided in the relevant chapter.

#### Temperature

- Avoid physical contact with the seating system's motors at all times. Motors are continuously in motion during use and can reach high temperatures. After use, the motors will cool down slowly. Physical contact could cause burns.
- If you do not use the seating system, ensure that it is not exposed to direct sunlight for lengthy periods of time. Certain parts of the seating system, such as the seat, the back and the armrests can become hot if they have been exposed to full sunlight for too long. This may cause burns or allergic reactions to the skin.

#### Moving parts

- A seating system has moving and rotating parts. Contact with moving parts may result in serious physical injury or damage to the seating system. Contact with the moving parts of the seating system should be avoided.
- Electrical backrest adjustment
- Electrical elevating legrests

#### Decals and instructions on the seating system

Decals and instructions on the seating system

- The signs, symbols and instructions affixed to the seating system comprise part of the safety facilities. They must never be covered or removed. They must remain present and clearly legible throughout the entire lifespan of the seating system.
- Replace or repair all illegible or damaged signs, symbols and instructions immediately. Please contact your supplier for assistance.

### 2.3 Used decals on the seating system

Check manual before using



The seating system must not be lifted up by the armrest assembly, complete and/or legrests.




The stability of the seating system is influenced by the adjustment of the seating system's centre of gravity. Such adjustments should be made by professionals only.



### **3 Tools, parts and components**

#### **3.1 Tools**

 Use only high-quality tools for the adjustment(s).

## 4 Spare parts

### 4.1 Use of the parts lists

This document is meant as a reference book to be used to order parts for the seating systems that are shown on the front cover.

**How to order:**

When ordering parts, please specify:

- Serial number (see the identification plate)
- Group (to which the relevant part belongs)
- Article number
- Number of parts required
- Description (in the relevant language)
- Dimensions (if applicable)

**Remark:**

- If a part does not have a position number, it means that the part concerned cannot be purchased separately. The part concerned is part of the assembly shown. This assembly must be ordered as one piece. It has to be replaced in its entirety.
- Boxed position numbers refer to the relevant drawing.

**Order address:**

Please mail or fax your orders to your supplier.

**Service technicians:**

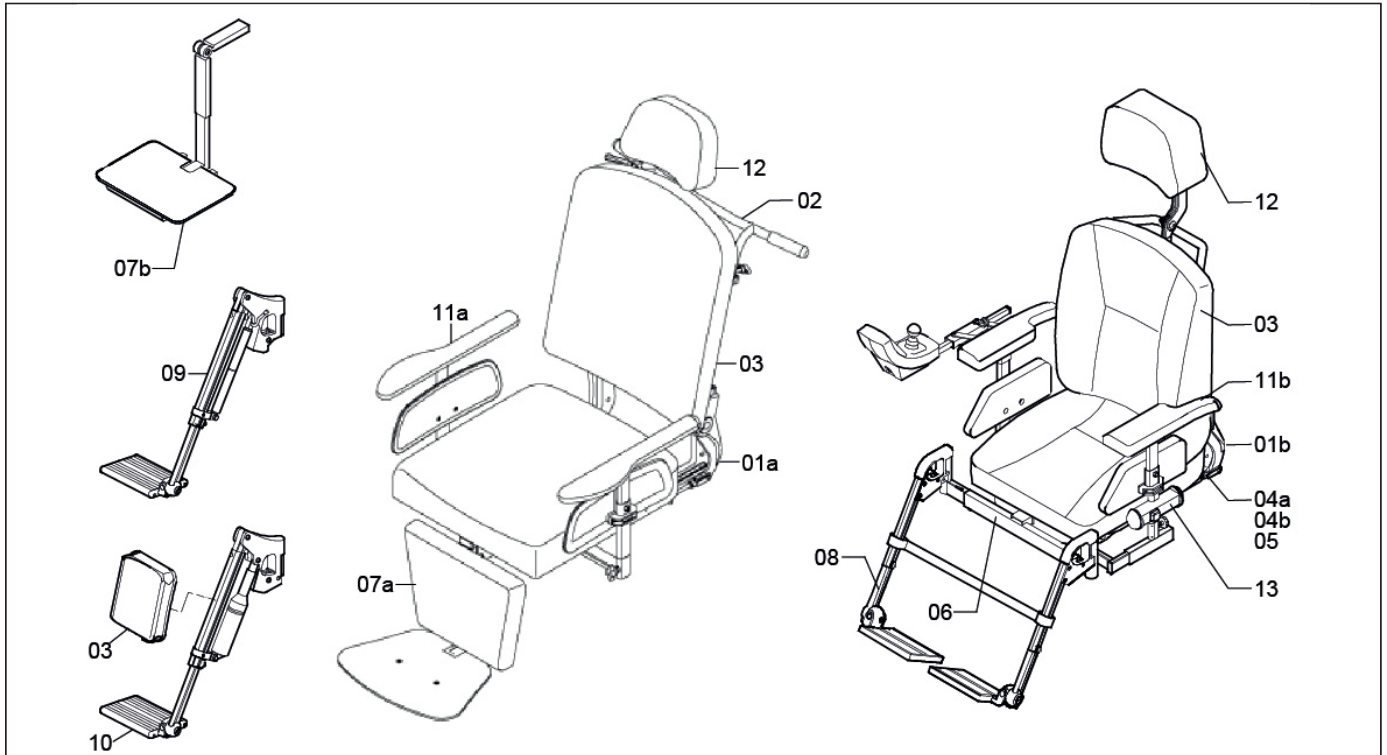
Repairs may only be carried out by trained and authorised service technicians.

During the execution of their work they are at all times fully responsible for the fulfilment of locally applicable safety guidelines and standards.

Temporary employees and persons in training may only carry out repair and replacement work under the supervision of an authorised service technician.

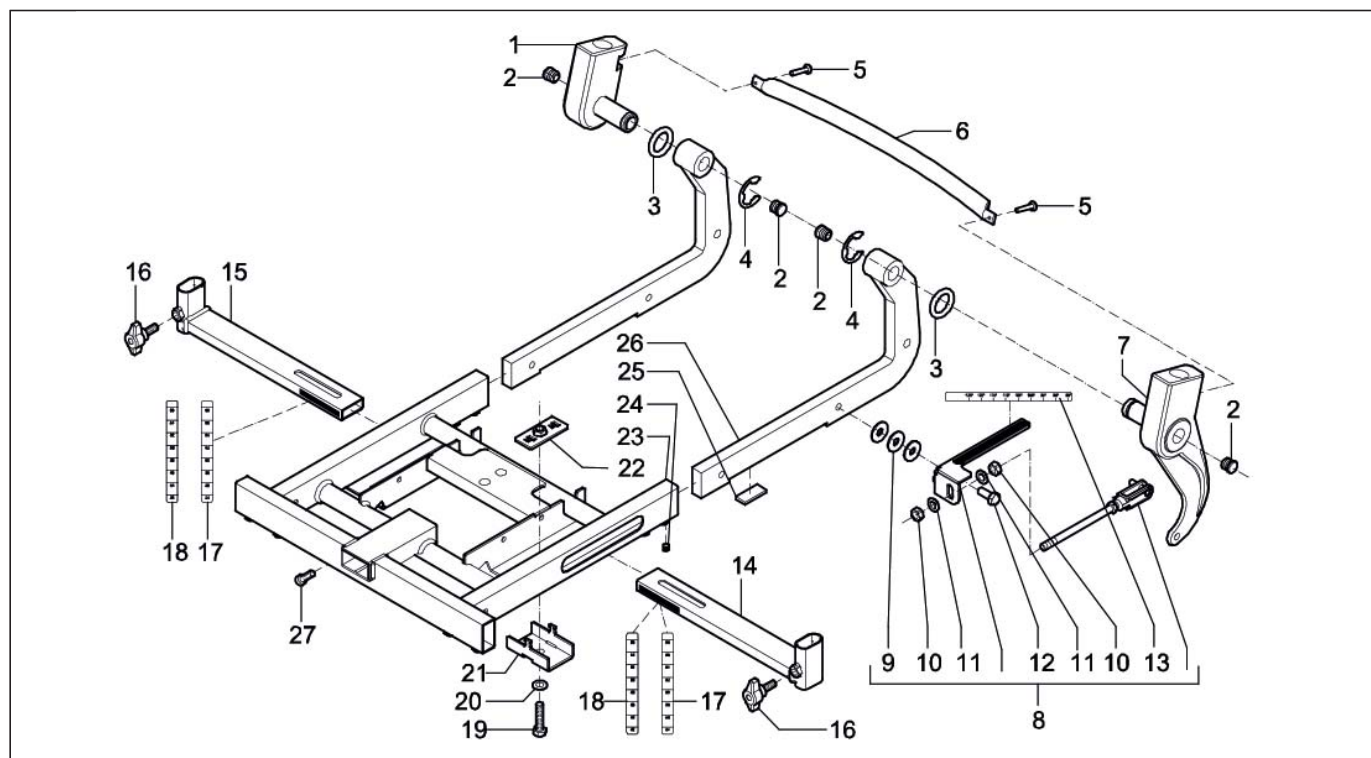


## 4.2 Overview exploded views



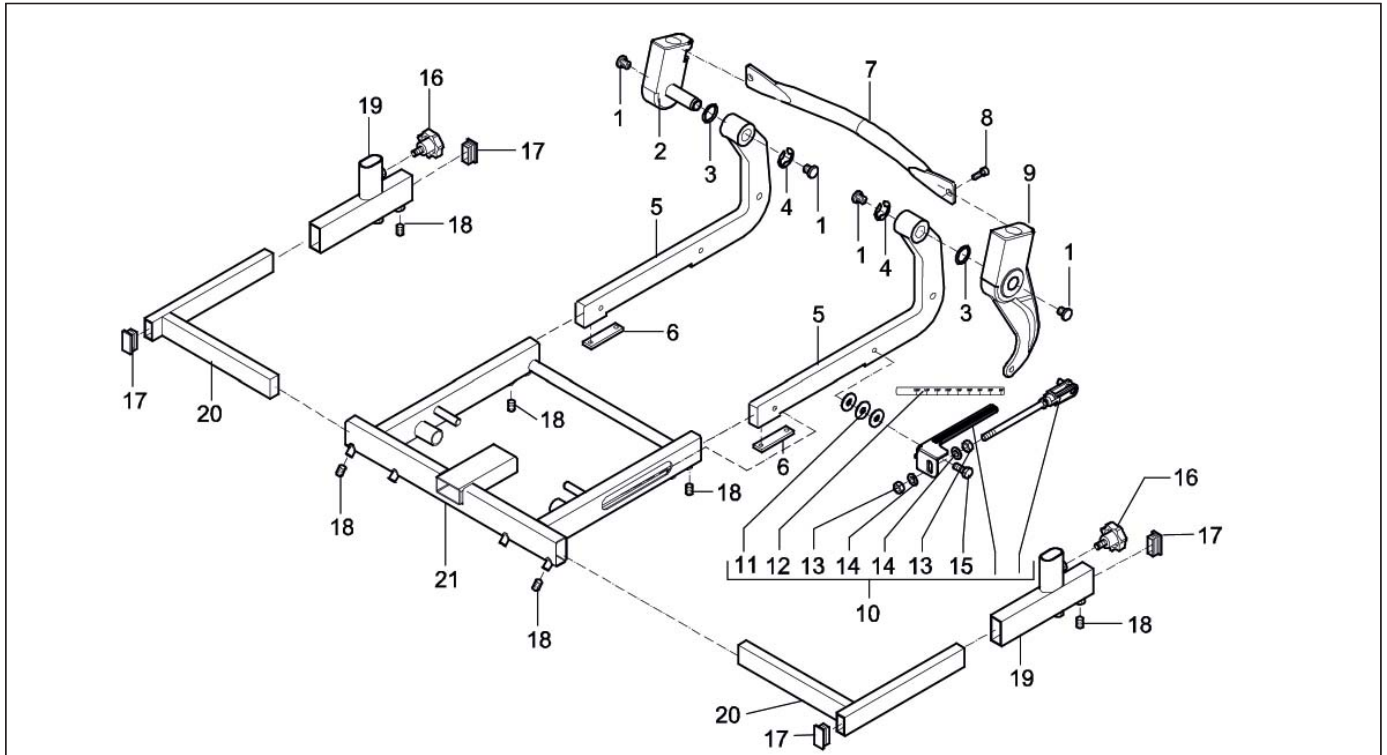
Drawing	Description	Page
01a	Seat frame / Ibis	11
01b	Seat frame / Puma YeS	12
02	Upper part Ibis	13
03	Seat / backrest / calf plate	14
04a	Gaspring backrest adjustment	17
04b	Gaspring backrest adjustment - old / Puma YeS	18
05	Electrical backrest adjustment	19
06	Mounting bracket for legrest	20
07a	Central legrest / Ibis	21
07b	Central legrest / Puma YeS	22
08	Standard legrest	23
09	Comfort mechanical legrest	24
10	Comfort electrical legrest	25
11a	Armrests / Ibis	27
11b	Armrests / Puma YeS	28
12	Headrest	29
13	LED lighting	30

## 01a Seat frame / Ibis



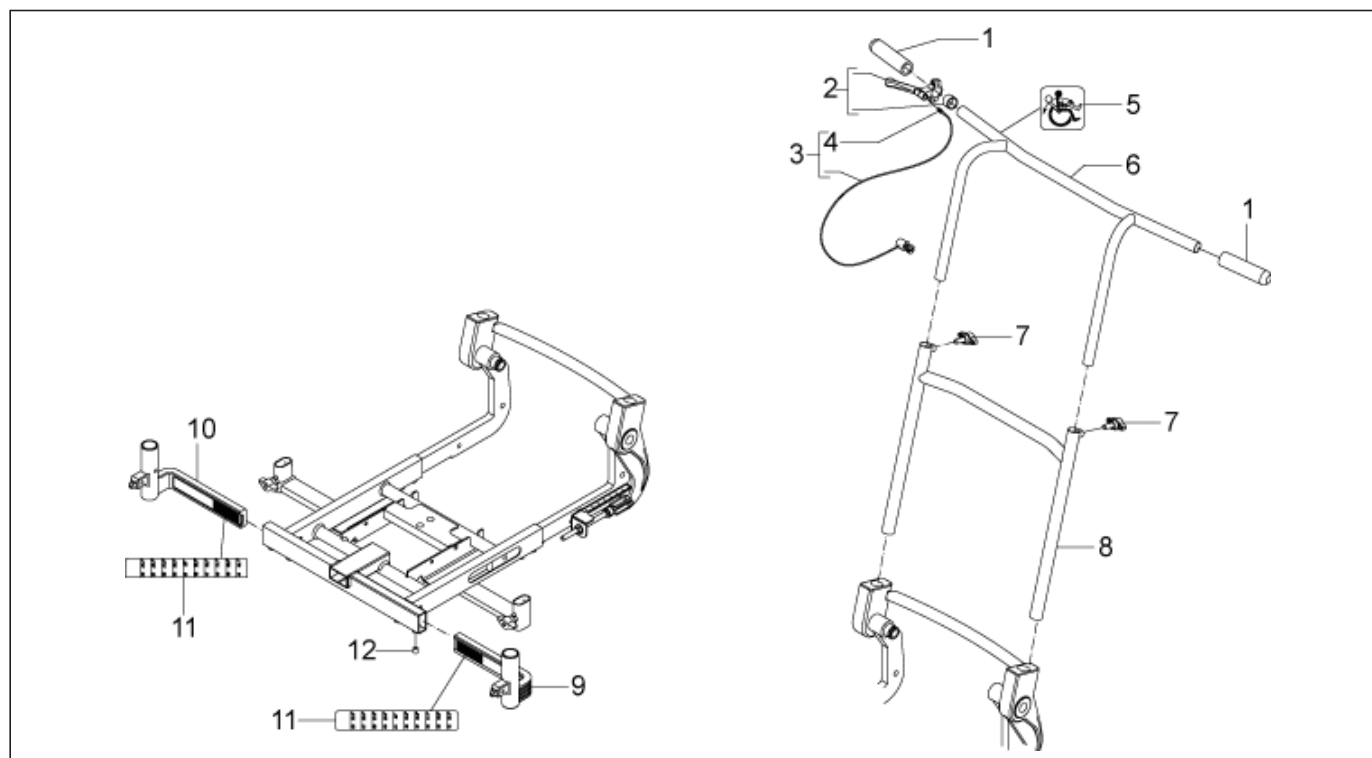
Pos	Qty	Article number	Description
1	1	02030.4123	Back part 2 Sedeo short back arm
2	4	00000.9009	Insert cap round 15 black
3	2	00001.0204	Washer
4	2	00000.1401	Shaft lock washer 15mm
5	2	00000.3728	Button head M8X12
6	1	02030.3423	Back tube
7	1	02030.4223	Back part 2 Sedeo long back arm
8	1	1008035	Backrest adjustment assy
9	3	00000.2103	Washer flat 3XD M8
10	2	00000.1502	Hex Nut M8
11	2	00000.2003	Washer flat M8
12	1	00000.4135	Hex. Bolt M8x25
13	1	1003247	Label back rest angle (sticker sheet)
14	1	9002132	Armrest holder left > 10-02-2008
14	1	9001182	Ext. armrest holder left < 10-02-2008
14	1	9002134	Ext. armrest holder left > 10-02-2008
15	1	9002133	Arm holder right > 10-02-2008
15	1	9001181	Ext. armrest holder right < 10-02-2008
15	1	9002135	Ext. armrest holder right > 10-02-2008
16	2	00000.6801	Wing bolt M8X20; L=40
17	2	1003247	Label width adj. arm rest (standard) (sticker sheet)
18	2	1003247	Label width adj. arm rest (wide) (sticker sheet)
19	2	00000.4113	Hex bolt M8X35
20	2	00000.2103	Washer flat 3XD M8
21	2	9001142	Armrest clamp plate
22	2	9001145	Nut plate weld assy
23	1	9000951	Sedeo seating frame
24	4	00000.3519	Adjusting screw M8X10
25	2	9000673	Clamping plate, Sedeo
26	2	02030.4023	Back part 1 Sedeo
27	1	00000.4002	Socket screw M8X16

## 01b Seat frame / Puma YeS



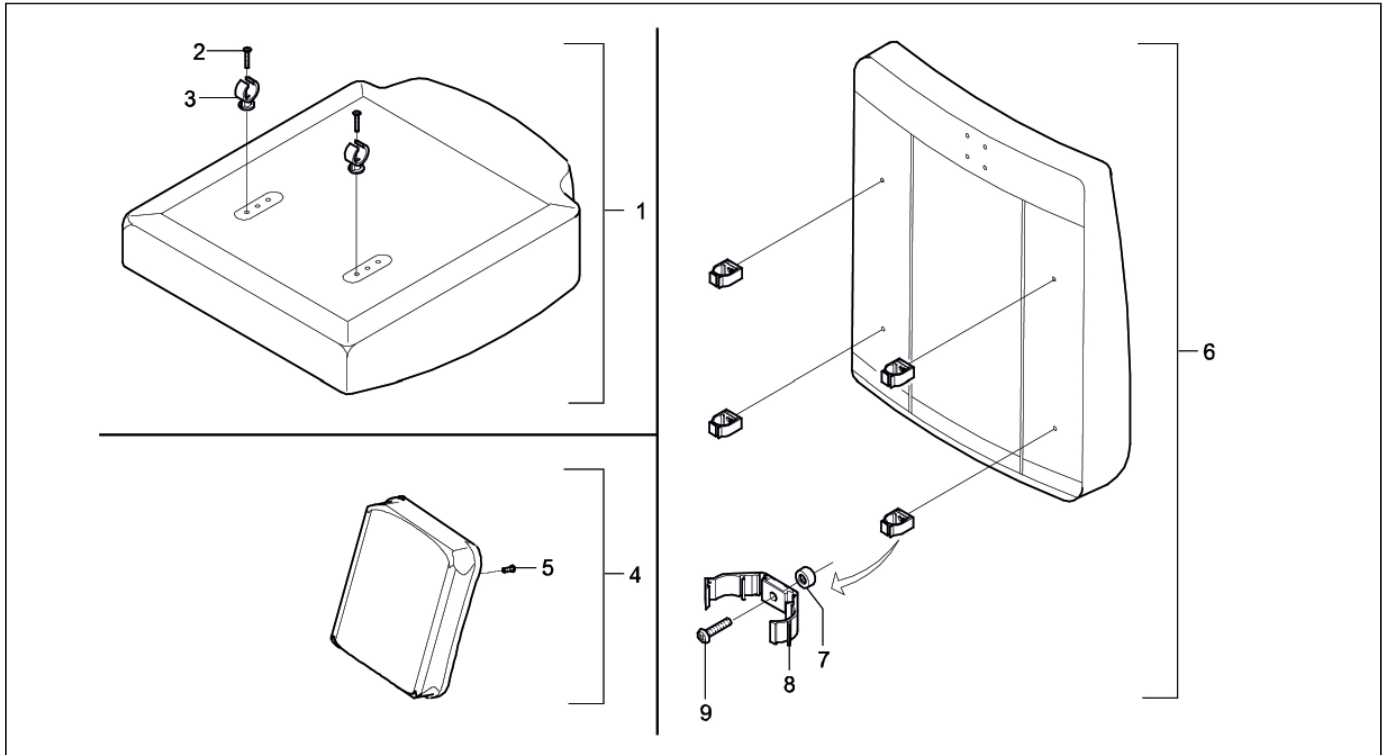
Pos	Qty	Article number	Description
1	4	00000.9009	Insert cap round 15 black
2	1	02030.4123	Back part 2 Sedeo short back arm
3	2	00001.0204	Washer
4	2	00000.1401	Shaft lock washer 15MM D6799 RVS
5	2	02030.4023	Back part 1 Sedeo
6	2	9000673	Pressure plate Sedeo
7	1	02030.3423	Back frame
8	2	00000.3728	Button head M8X12 ISO7380
9	1	02030.4223	Back part 2 Sedeo long back arm
10	1	1008035	Backrest adjustment assy
11	3	00000.2103	Washer flat 3XD M8
12	1	1003247	Label back rest angle (sticker sheet)
13	2	00000.1502	Hex Nut M8
14	2	00000.2003	Washer flat M8
15	1	00000.4135	Hex. Bolt M8x25
16	2	00000.4502	Star knob outs M8X15 black
17	4	00000.9203	Insert cap 35x15 black
18	8	00000.3519	Adjusting screw cone M8X10 D914
19	2	9000158	Arm support holder < 01-06-2008
19	2	9002122	Arm support holder > 01-06-2008
20	2	118.00172.023	Insert holder
20	2	1002477	Insert holder widened
21	1	118.00111.023	Seat frame Sedeo

## 02 Upper part Ibis



Pos	Qty	Article number	Description
1	2	00000.4801	Handle black
2	1	1007008	Handle mech.seat adj.
3	1	1008057	Mechanical cable
4	1	9008656	Cable spanner M7x25 with nuts
5	1	00001.1400	Label tilt adjustment
6	1	02030.0111	Handlebars
7	2	00000.6801	Wing bolt M8X20; L=40
8	1	1001834	Back frame
9	1	9001155	Leg rest holder left
10	1	9001156	Leg rest holder right
11	2	1003247	Label leg rest width (sticker sheet)
12	4	00000.3501	Adjusting screw M8X10

## 03 Seat / backrest / calf plate



Pos	Qty	Article number	Description
1	1	-	Sedeo seat (see page 14)
2	2	00000.3617	Screw M5X30
3	2	00000.6501	Pipe clamp DIA 22 black
4	1	220.00121.505	Calf plate standard
4	1	220.00141.505	Calf plate small
5	4	00000.3206	Screw M5X16
6	1	-	Sedeo backrest (see page 15)
7	4	00000.5721	Washer flat M6
8	4	00000.6504	Pipe clamp back closed type
9	4	00000.3207	Screw M5X20
-	-	9002008	Heavy duty backrest clamps (set)

## SEDEO SEAT CUSHIONS

## SPARE PARTS

W X D	PROFILED	PROFILED WITH GREY MIDDLE BAR	MEMORY FOAM	SUPPORT
42x50	200.42131.505	1002950	200.40481.517	205.42791.517
46x50	200.42211.505	1002951	200.40561.517	205.42871.517
50x50	200.42291.505	1002952	200.40641.517	205.42951.517
42x54	1001977	1002953	1001997	1002006
42x58	1001978	1002954	1001998	1002007
46x54	1001979	1002955	1001999	1002008
46x58	1001980	1002956	1002000	1002009
50x54	1001981	1002957	1002001	1002010
50x58	1001982	1002958	1002002	1002011
54x50	1001983	1002959	1002003	1002012
54x54	1001984	1002960	1002004	1002013
54x58	1001985	1002961	1002005	1002014

W X D	BALANCE	FLUID	AIR
42x50	201.47741.517	1003360	1003363
46x50	201.47821.517	1003361	1003364
50x50	201.47901.517	1003362	1003365
42x54	1002024		
42x58	1002025		
46x54	1002026		
46x58	1002027		
50x54	1002028		
50x58	1002029		
54x50	1002030		
54x54	1002031		
54x58	1002032		

W X D	BOARD	BOARD WITH REAR PAN	PAN
42x50	1002042	1002054	202.41141.505
46x50	1002045	1002057	202.41221.505
50x50	1002048	1002060	202.41301.505
42x54	1002043	1002055	1002033
42x58	1002044	1002056	1002034
46x54	1002046	1002058	1002035
46x58	1002047	1002059	1002036
50x54	1002049	1002061	1002037
50x58	1002050	1002062	1002038
54x50	1002051	1002063	1002039
54x54	1002052	1002064	1002040
54x58	1002053	1002065	1002041

## ADAPTATIONS special conditions will apply on all adaptations

Profiled with grey middle bar seat cushion, other upholstery size and/or material	
Memory foam seat cushion, other upholstery size and/or material	
Support seat cushion, other upholstery size and/or material	
Balance seat cushion, other upholstery size and/or material	
Fluid seat cushion, other upholstery size and/or material	
Air seat cushion, other upholstery size and/or material	
Board, other upholstery size and/or material	
Board with rear pan, other upholstery size and/or material	
Pan, other upholstery size and/or material	

## SEDEO BACKRESTS

## SPARE PARTS

W X D	PROFILED	PROFILED WITH GREY MIDDLE BAR	WITH LUMBAR SUPPORT	EXTRA SOFT
42x52	207.20031.505	1002974	215.20031.505	207.20211.520
46x52	207.20051.505	1002975	215.20051.505	207.20231.520
50x52	207.20071.505	1002976	215.20071.505	207.20251.520
42x56	1002143	1002977	1002161	1002179
42x60	1002144	1002978	1002162	1002180
46x56	1002145	1002979	1002163	1002181
46x60	1002146	1002980	1002164	1002182
50x56	1002147	1002981	1002165	1002183
50x60	1002148	1002982	1002166	1002184
54x52	1002149	1002983	1002167	1002185
54x56	1002150	1002984	1002168	1002186
54x60	1002151	1002985	1002169	1002187

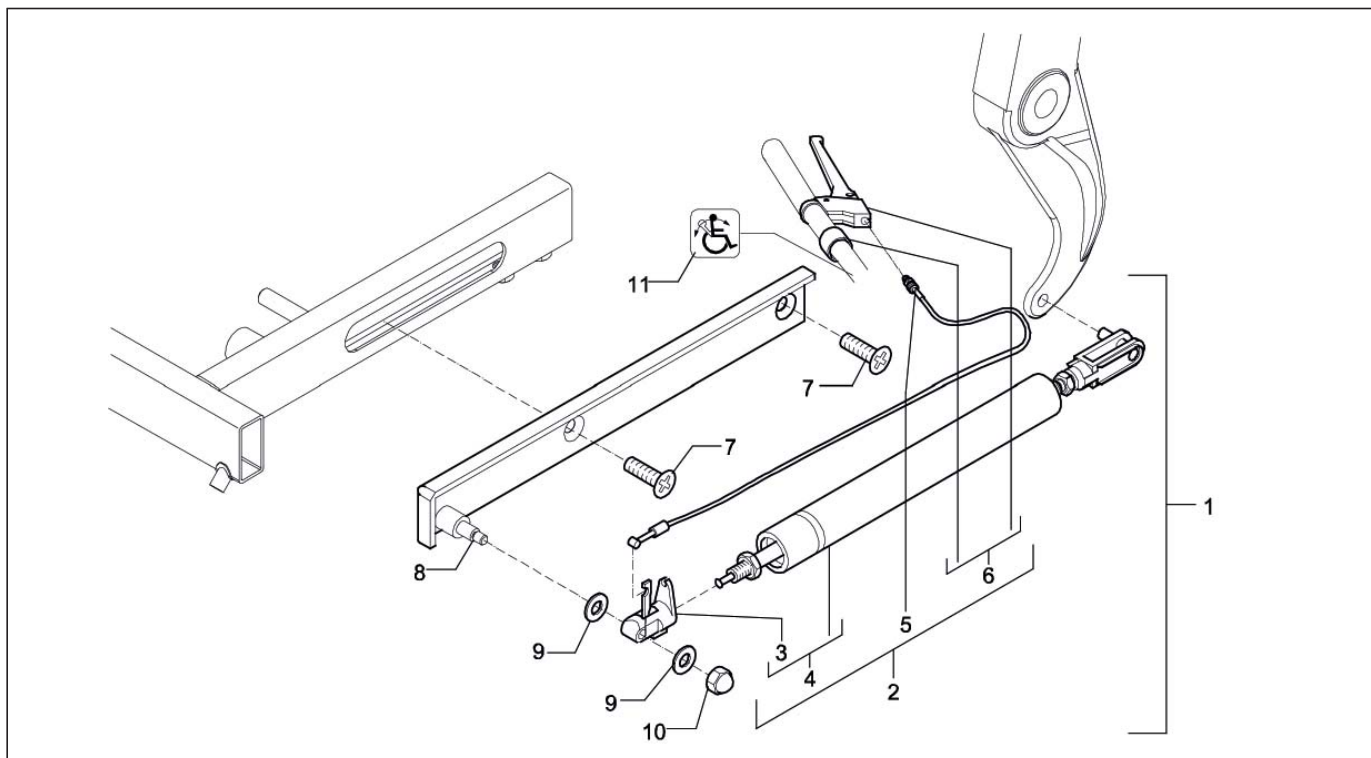
W X D	WEBBED	SUPPORT	WITH STRAPS	WITH STRAPS, ACTIVE
42x52	207.20751.520	209.20211.505	214.20751.520	214.23031.520
46x52	207.20771.520	209.20231.505	214.20771.520	214.23041.520
50x52	207.20791.520	209.20251.505	214.20791.520	214.23051.520
42x56	1002152	1002170	1002188	1002197
42x60	1002153	1002171	1002189	1002198
46x56	1002154	1002172	1002190	1002199
46x60	1002155	1002173	1002191	1002200
50x56	1002156	1002174	1002192	1002201
50x60	1002157	1002175	1002193	1002202
54x52	1002158	1002176	1002194	1002203
54x56	1002159	1002177	1002195	1002204
54x60	1002160	1002178	1002196	1002205

W X D	WITH STRAPS, ACTIVE FLEXIBLE	WITH STRAPS, PASSIVE FLEXIBLE
40x50	1008559	1010725
45x50	1008560	1010726
50x50	1008561	1010727

## ADAPTATIONS special conditions will apply on all adaptations

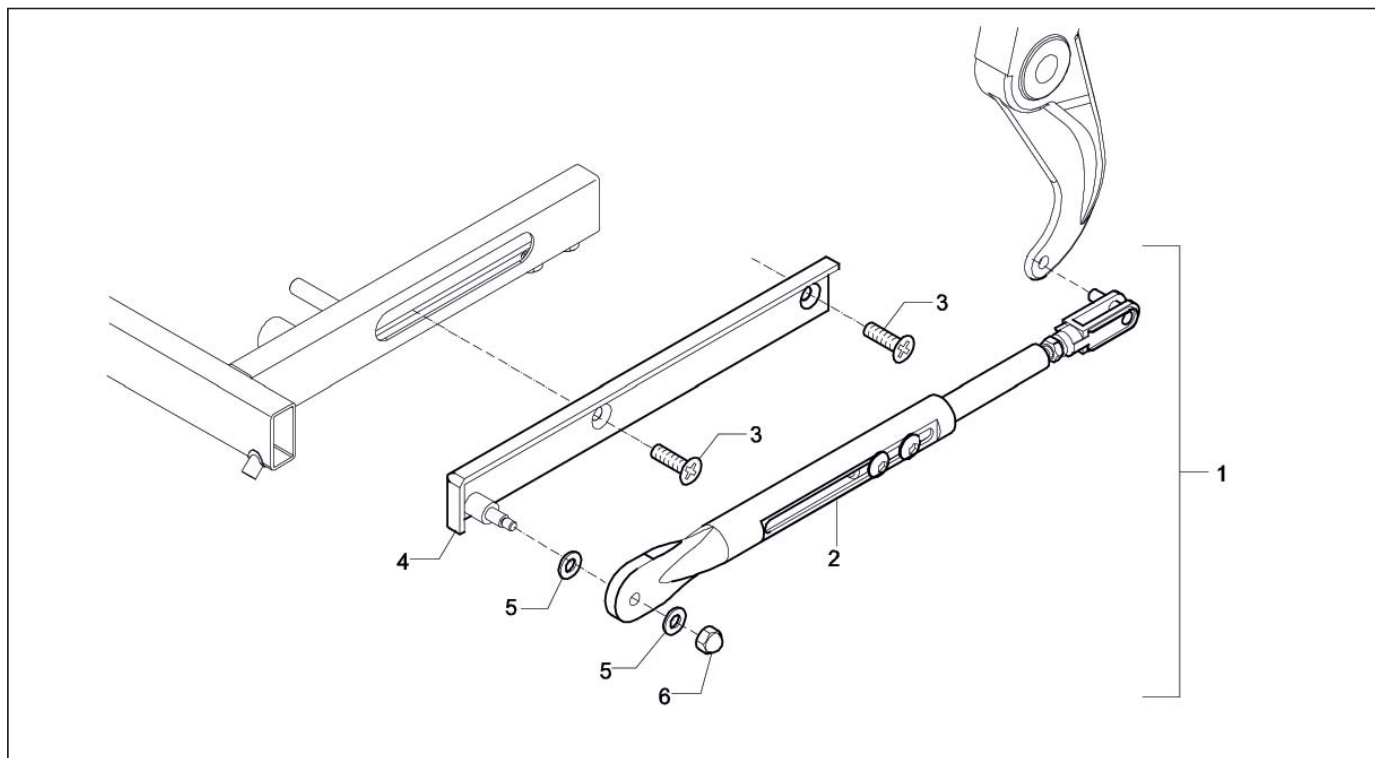
Profiled with grey middle bar backrest, other upholstery size and/or material	
Backrest with lumbar support, other upholstery size and/or material	
Extra soft backrest, other upholstery size and/or material	
Webbed backrest, other upholstery size and/or material	
Support backrest, other upholstery size and/or material	
Backrest with straps, other upholstery size and/or material	
Backrest with straps, active, other upholstery size and/or material	
Backrest with straps, active flexible, other upholstery size and/or material	
Backrest with straps, passive flexible, other upholstery size and/or material	

## 04a Gasspring backrest adjustment



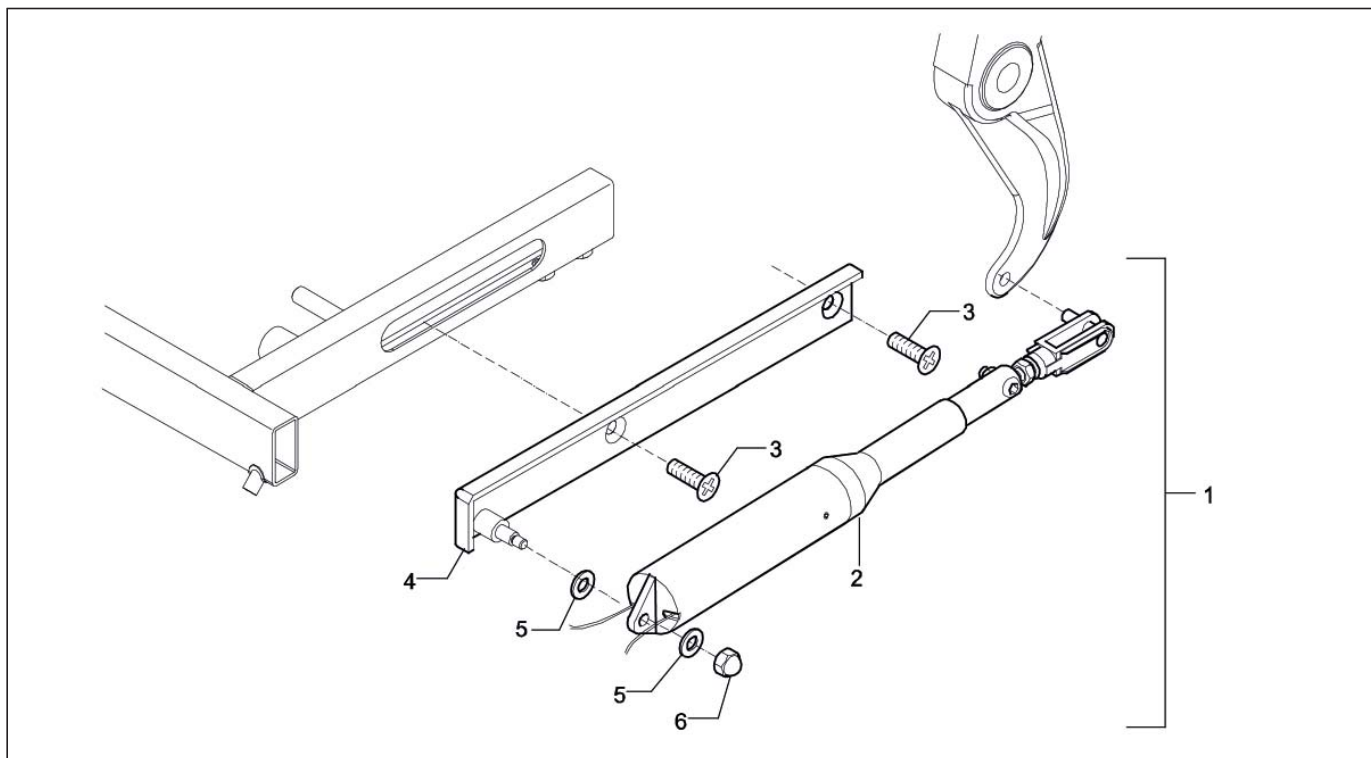
Pos	Qty	Article number	Description
1	1	1003440	Gaspring backrest adjustment complete
2	1	02152.9200	Gaspring backrest adj.
3	1	02010.6910	Gaspring unlock mechanism
4	1	1002813	Gaspring bloc-o-lift 200N
5	1	1008057	Cable
6	1	1007008	Handle
7	2	00001.0914	Screw M8X16
8	1	02030.3523	Bracket backrest adjustment
9	2	00000.2250	Spring washer fluted M8
10	1	00000.1801	Cap lock nut M6
11	1	00001.1405	Label backrest adjustment



**04b Gasspring backrest adjustment - old / Puma YeS**

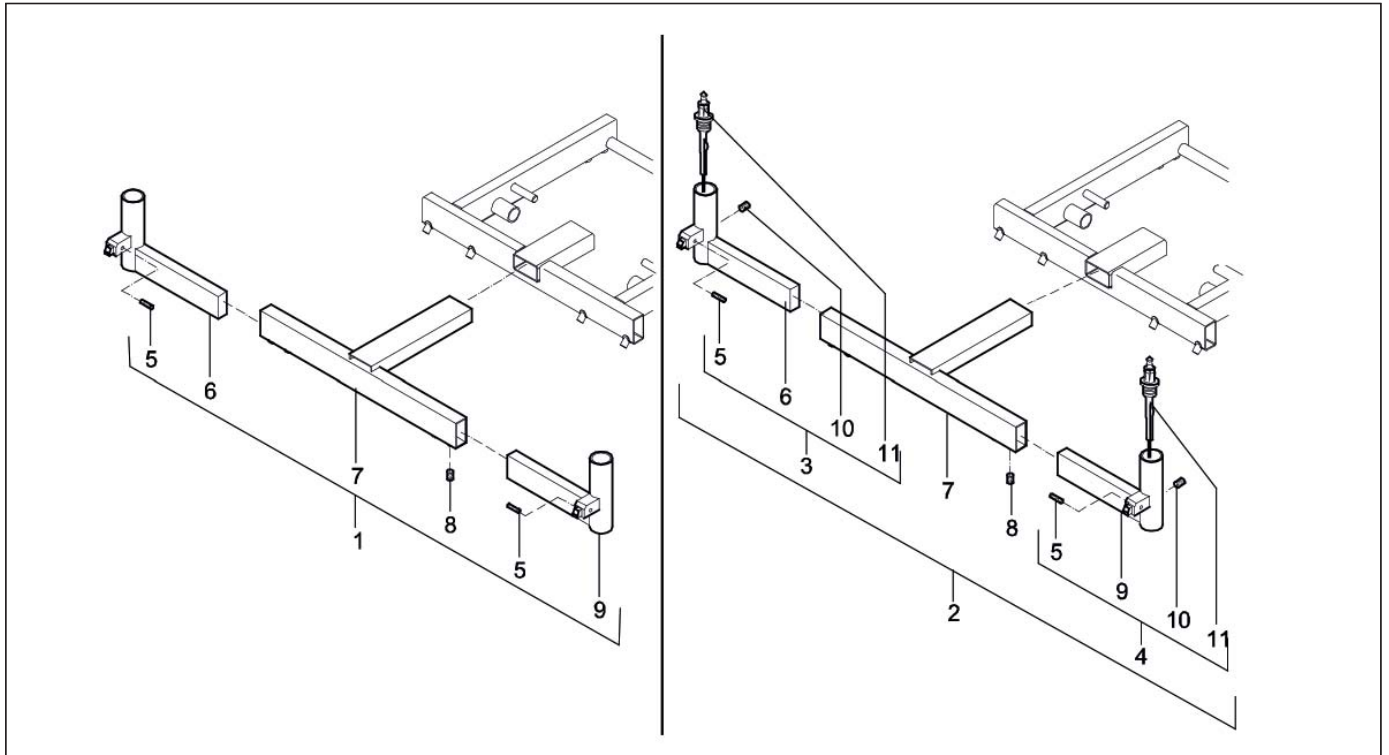
Pos	Qty	Article number	Description
-	-	-	No longer available as on drawing (see drawing 01b pos 10 for replacement parts)

## 05 Electrical backrest adjustment

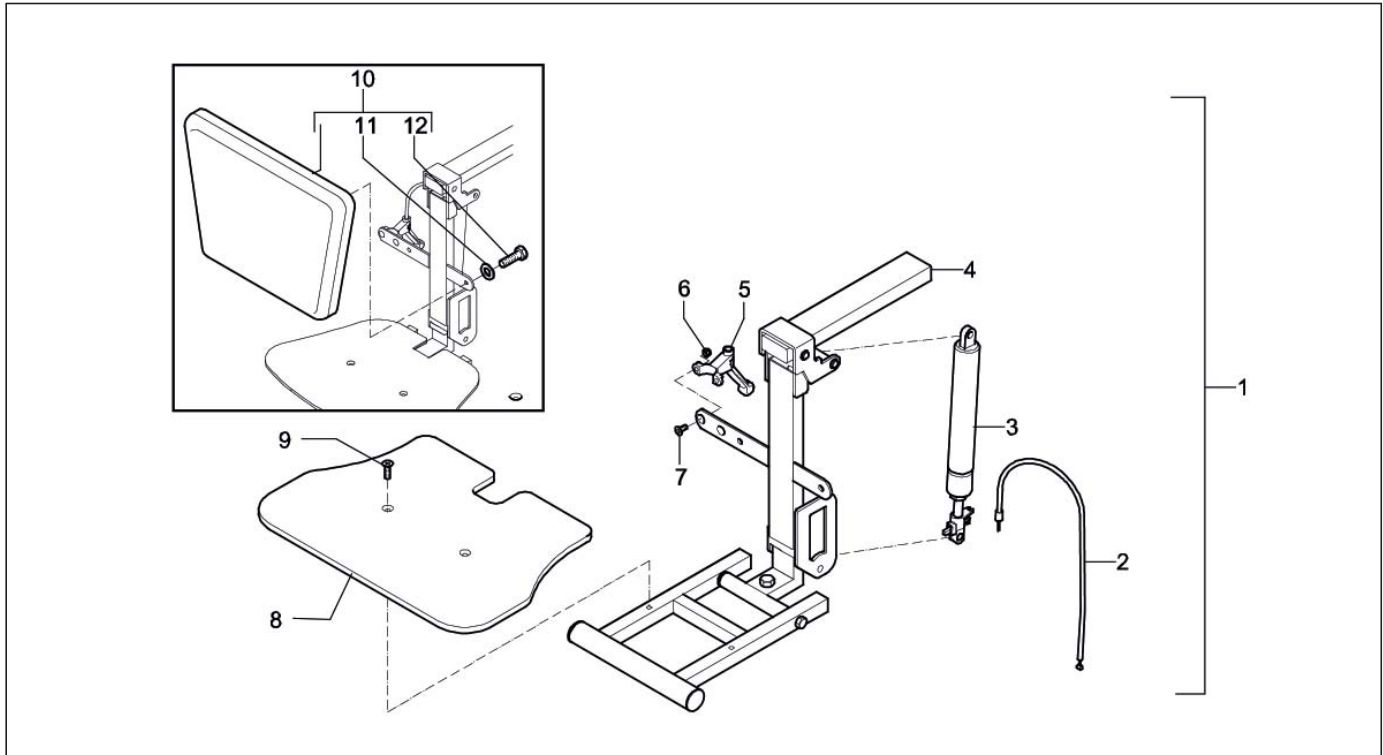


Pos	Qty	Article number	Description
1	1	1008078	Electrical backrest
2	1	150.00141.000	Actuator for backrest
3	2	00001.0914	Screw M8x16 D7991
4	1	02030.3523	Bracket backrest adjustment
5	2	00000.2250	Spring washer fluted M8 D137B VZ
6	1	00000.1801	Cap locknut M6 D986/VZ
-	1	9002617	Fork joint for electrical back rest actuator

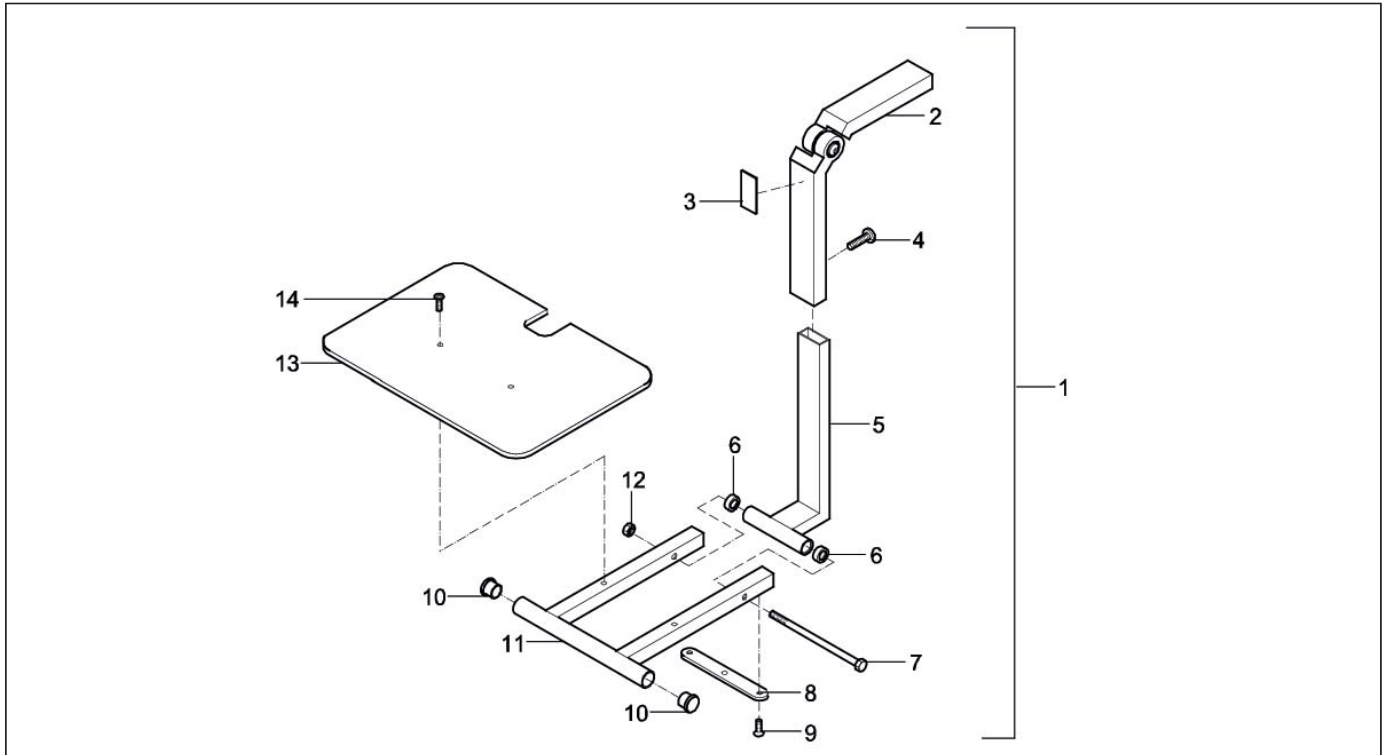
## 06 Mounting bracket for legrest



Pos	Qty	Article number	Description
1	1	01245.9623	Mounting bracket for standard and comfort leg rests
2	1	05245.9723	Mounting bracket for electrical leg rests
3	1	05990.0012	Insert tube right for electrical leg rest
4	1	05990.0013	Insert holder left-hand
5	2	00000.3590	Adjusting screw M6X16
6	1	01502.1323	Insert tube right
7	1	05245.0723	Middle part leg rest bracket
7	1	1002601	Leg rest mounting bracket extended (10 cm)
8	4	00000.3501	Adjusting screw BZK M8X10 D913/VZ
9	1	01502.1223	Insert tube left
10	2	00000.3542	Adjusting screw + crater M6X8 D916
11	2	055.00064.000	Leg rest harness
-	1	1009562	Mounting bracket 10cm widened for standard and comfort legrests
-	1	1008492	Mounting bracket for Torso+ standard and comfort leg rests on Sedeo

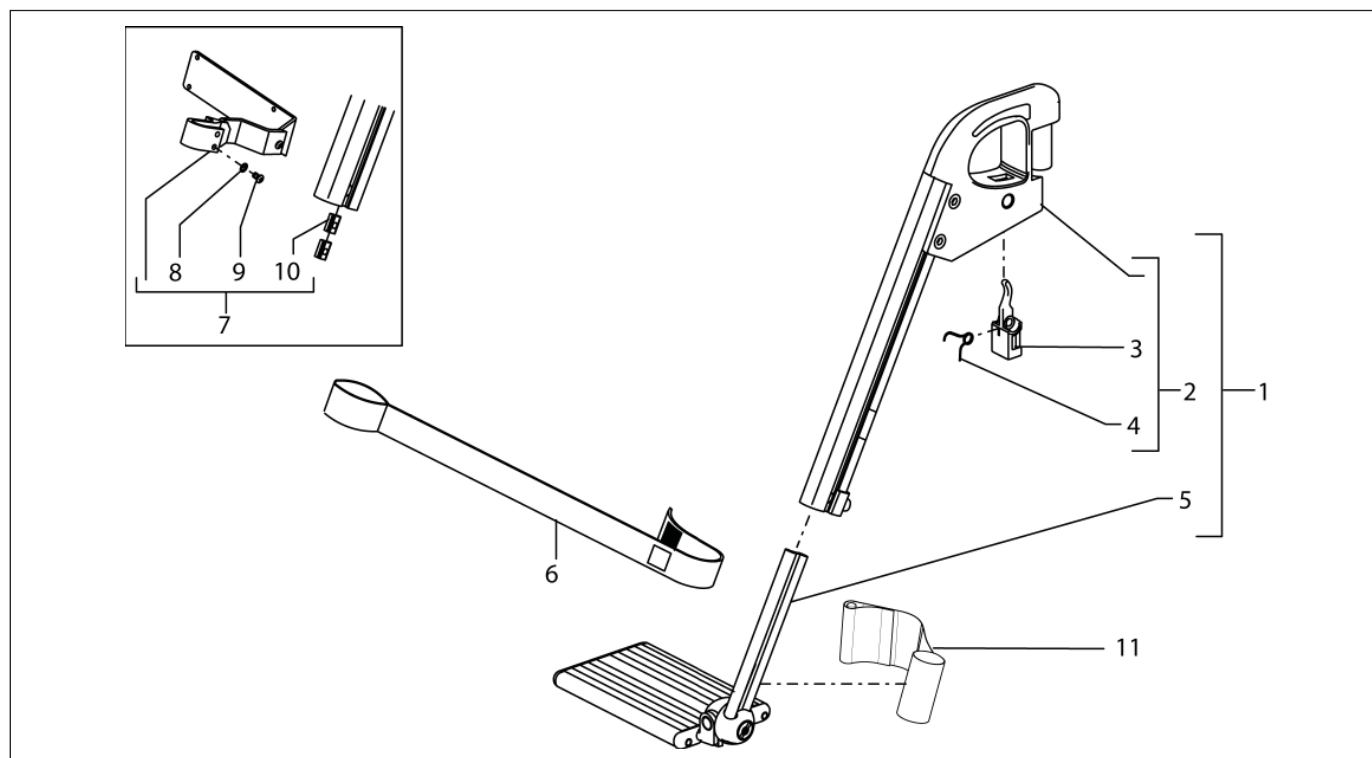
**07a Central legrest / Ibis**

Pos	Qty	Article number	Description
1	1	1001087	Central legrest
2	1	9001218	Cable
3	1	1002808	Gaspring bloc-o-lift 400N+unlock+nut
4	1	1001086	Metalparts central legrest
5	1	00000.6410	Handle
6	2	00000.1700	Lock nut M5
7	2	00000.3616	Screw M5x12
8	1	01050.2480	Footplate
9	2	00000.3614	Screw M6x20
10	1	220.00201.505	Calf pad trapezium
11	2	00000.2002	Washer flat M6 D125A/VZ
12	2	00000.4016	Cyl cap screw M6x25

**07b Central legrest / Puma YeS**

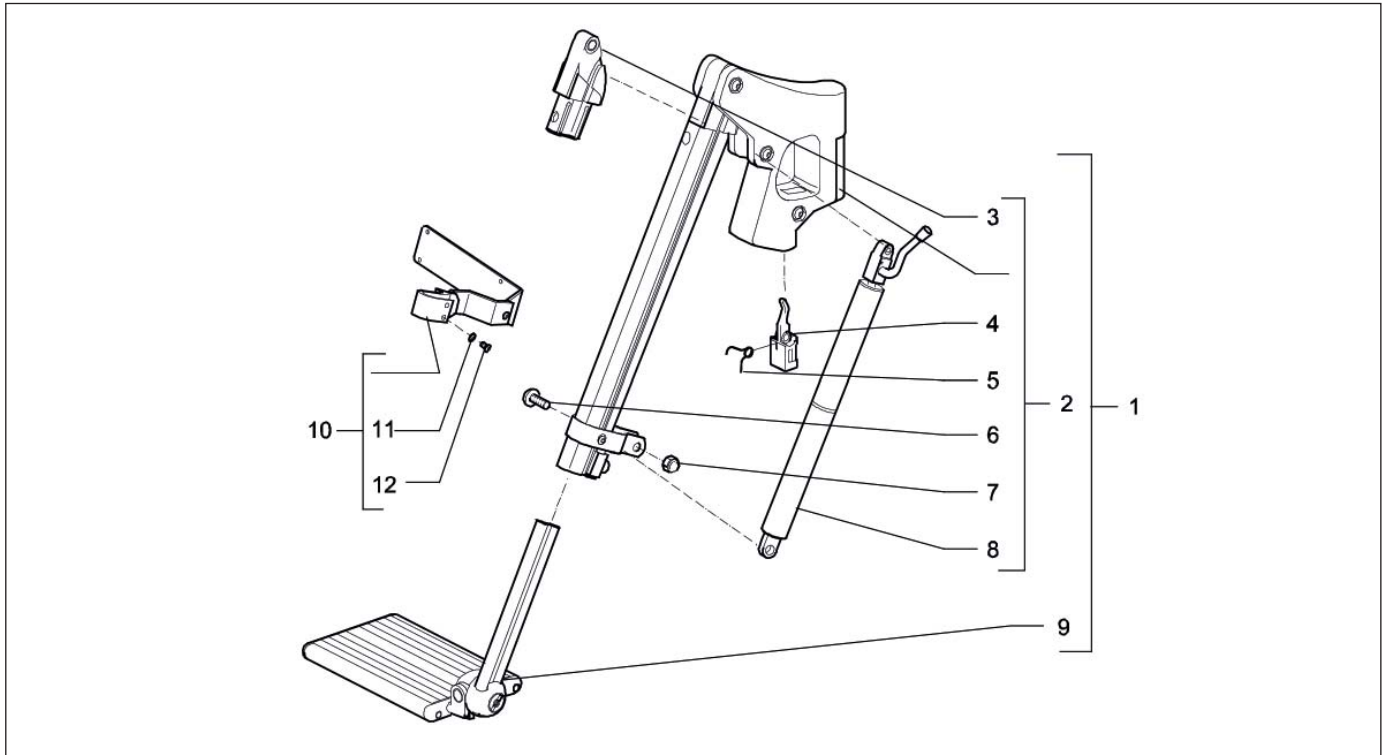
Pos	Qty	Article number	Description
1	1	140.00061.000	Central leg rest
1	1	1011019	Central leg rest with calf plate bracket
2	1	9001719	Upper part hinge
2	1	9002040	Upper part hinge with calfplate bracket
3	1	00001.1324	Label tilting hazard
4	1	00000.3706	Button head M8X25
5	1	20050.1311	Lower tube
6	2	00000.5002	Bearing bush nylon 8x11x13
7	1	00000.4100	Hex bolt M8X150
8	1	01050.2011	Strip
9	2	00000.3614	Screw M6X20
10	2	00000.9002	Insert cap round 22 black
11	1	01050.1411	U-pipe
12	1	00000.1702	Lock nut M8
13	1	20050.2480	Footplate
14	2	00000.3614	Screw M6X20

## 08 Standard legrest



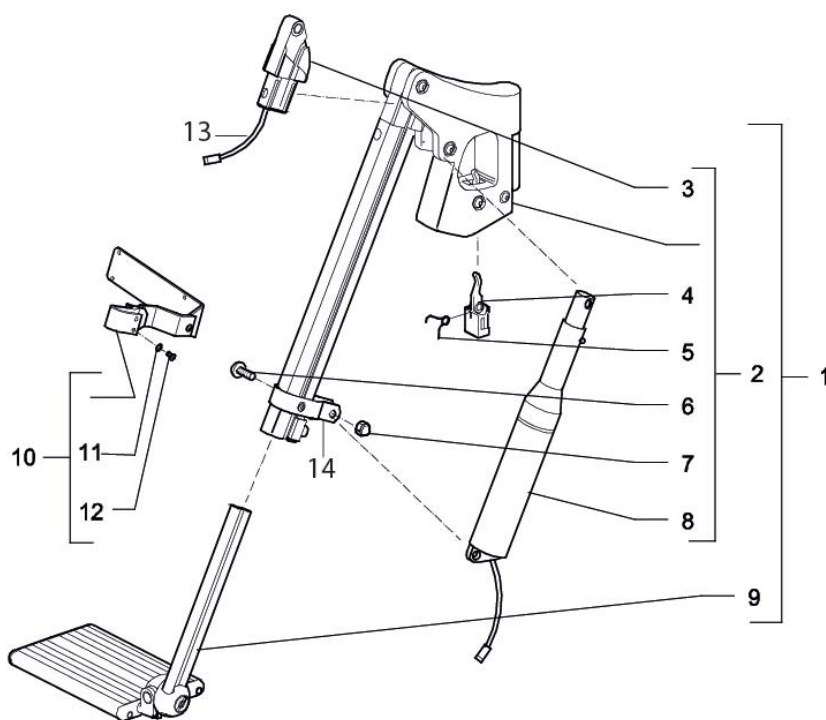
Pos	Qty	Article number	Description
1	1	-	Standard leg rest left (see page 25)
1	1	-	Standard leg rest right (see page 25)
2	1	1002515	Standard leg rest upper part left
2	1	1002514	Standard leg rest upper part right
3	2	01500.1112	Leg rest release lever
4	2	01500.2212	Leg rest release spring
5	1	-	Footplate left (see page 25)
5	1	-	Footplate right (see page 25)
6	1	01263.9000	Calf strap
7	2	1004189	Calf plate hinge standard
7	2	1004188	Calf plate hinge small
8	4	00000.2601	Toothed spring washer M6
9	4	00000.3725	Button head M6X10
10	4	01500.2110	Leg rest clamping strip short
11	1	01273.9110	Canvas heel support left = right
-	1	01503.8000	Standard leg rest top complete right
-	1	01503.8100	Standard leg rest top complete left
-	2	1002599	Legrest inner extrusion 10 cm extended

## 09 Comfort mechanical legrest



Pos	Qty	Article number	Description
1	1	-	Comfort leg rest left (see page 25)
1	1	-	Comfort leg rest right (see page 25)
2	1	1002517	Comfort leg rest upper part left
2	1	1002516	Comfort leg rest upper part right
3	2	1008580	Hinge comfort leg rest
4	2	01500.1112	Leg rest release lever
5	2	01500.2212	Leg rest release spring
6	2	00000.3706	Button head M8X25
7	2	00000.1802	Cap lock nut M8
8	1	1008076	Gaspring with gaspring control left
8	1	1008077	Gaspring with gaspring control right
-	1	1009968	Gaspring 200N
9	1	-	Footplate left (see page 25)
9	1	-	Footplate right (see page 25)
10	2	1004189	Calf plate hinge standard
10	2	1004188	Calf plate hinge small
11	4	00000.2601	Toothed spring washer M6
12	4	00000.3725	Button head M6X10
-	1	01503.8200	Comfort leg rest top complete right
-	1	01503.8300	Comfort leg rest top complete left
-	1	90.600.000.111	Gaspring control left
-	1	90.600.000.121	Gaspring control right
-	2	1002599	Legrest inner extrusion 10 cm extended

## 10 Comfort electrical legrest



Pos	Qty	Article number	Description
1	1	-	Electrical comfort leg rest left (see page 25)
1	1	-	Electrical comfort leg rest right (see page 25)
2	1	1003029	Electrical comfort leg rest upper part left
2	1	1003028	Electrical comfort leg rest upper part right
3	2	1008580	Hinge comfort leg rest
4	2	01500.1112	Leg rest release lever
5	2	01500.2212	Leg rest release spring
6	2	00000.3706	Button head M8X25
7	2	00000.1802	Cap lock nut M8
8	2	9001232	Leg rest actuator inc. kabel
9	1	-	Footplate left (see page 25)
9	1	-	Footplate right (see page 25)
10	2	1004189	Calf plate hinge standard
10	2	1004188	Calf plate hinge small
11	2	00000.2601	Toothed spring washer M6
12	2	00000.3725	Button head M6X10
13	2	9001233	Harness for leg rest actuator
14	2	01500.2923	Leg rest hinge gas spring/motor
-	1	01503.8400	Electrical comfort leg rest top complete right
-	1	01503.8500	Electrical comfort leg rest top complete left
-	2	1002599	Legrest inner extrusion 10 cm extended



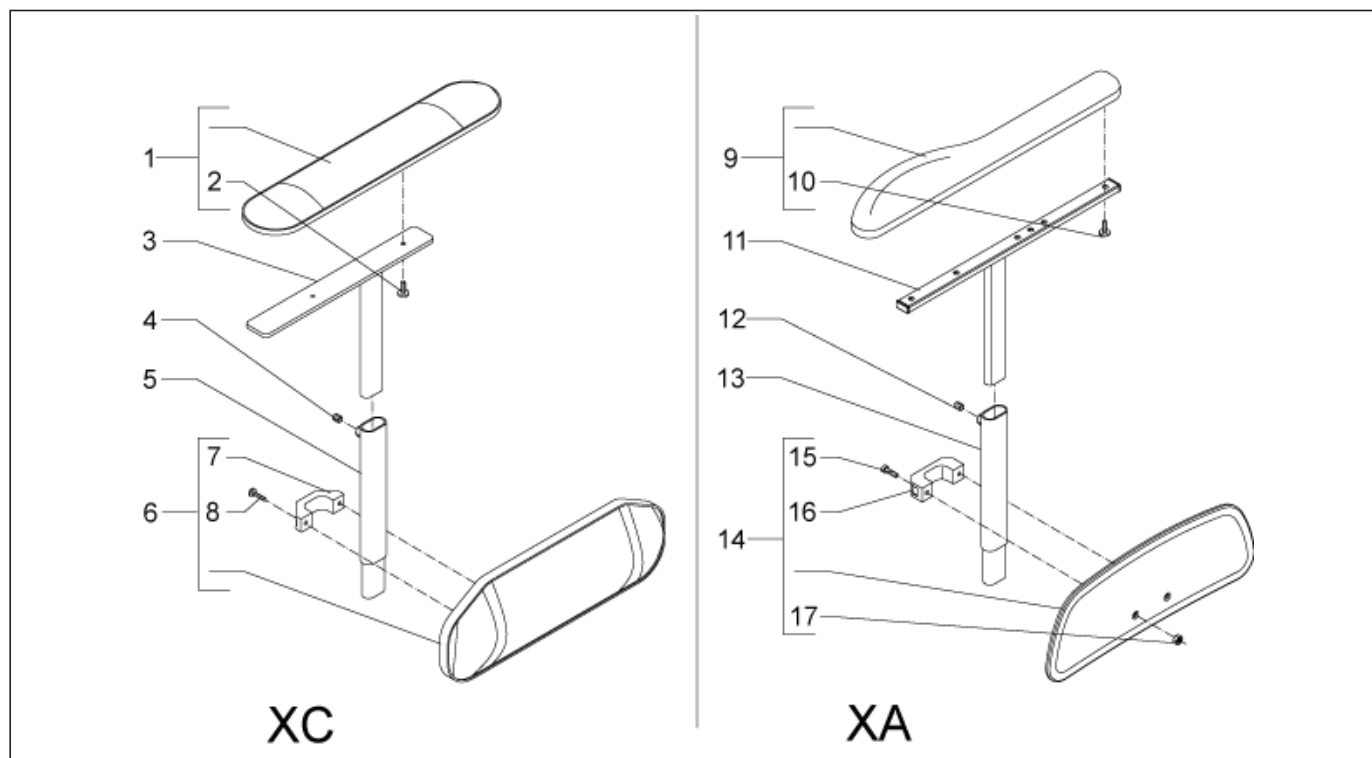
SEDEO LEGRESTS AND FOOTPLATES

SPARE PARTS

LEGRESTS									
TYPE	SIZE	RIGHT		LEFT		CALF PLATE AND LEGRESTBRACKET, SET		CALFSTRAP AND LEGRESTBRACKET, SET	
STANDARD	13	1003561		1003560		1003592		1003579	
	15	1003563		1003562		1003593		1003580	
	17	01500.9019		01500.9119		140.00071.000		140.00011.000	
	19	1003565		1003564		1003594		1003581	
	21	1003567		1003566		1003595		1003582	
	23	1003569		1003568		1003596		1003583	
	25	1003571		1003570		1003597		1003584	
COMFORT	13	140.00341.000		140.00311.000		1003607			
	15	140.00351.000		140.00321.000		1003608			
	17	01500.9219		01500.9319		140.00021.000			
	19	140.00361.000		140.00331.000		1003609			
	21	1003601		1003598		1003610			
	23	1003602		1003599		1003611			
	25	1003603		1003600		1003612			
ELECTRICAL	13	140.00461.000		140.00451.000		140.00471.000			
	15	1003618		1003613		1003623			
	17	01502.9013		01502.9113		140.00031.000			
	19	1003619		1003614		1003624			
	21	1003620		1003615		1003625			
	23	1003621		1003616		1003626			
	25	1003622		1003617		1003627			

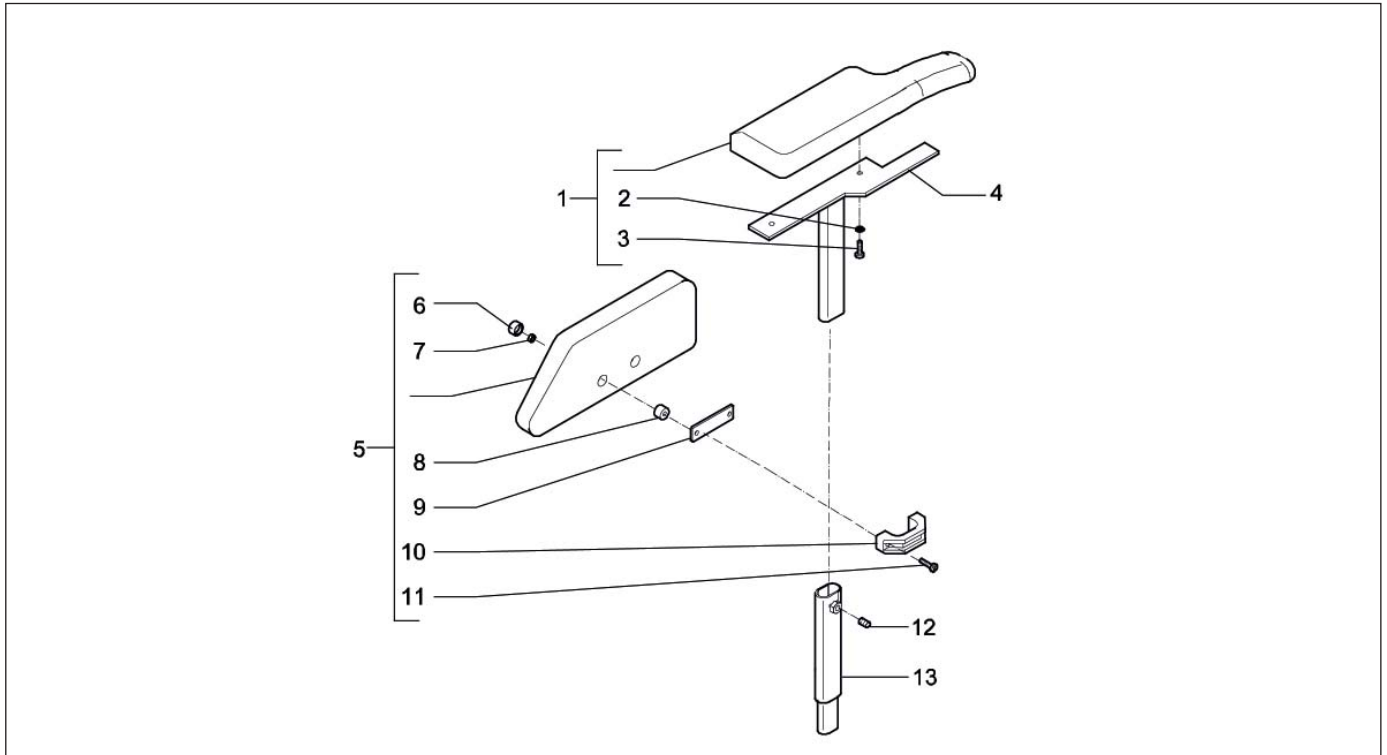
FOOTPLATES				
SIZE	RIGHT		LEFT	
13	140.00161.000		140.00191.000	
15	140.00171.000		140.00201.000	
17	140.00121.000		140.00131.000	
19	140.00181.000		140.00211.000	
21	1003220		1003219	
23	1003222		1003221	
25	1003224		1003223	

## 11a Armrests / Ibis



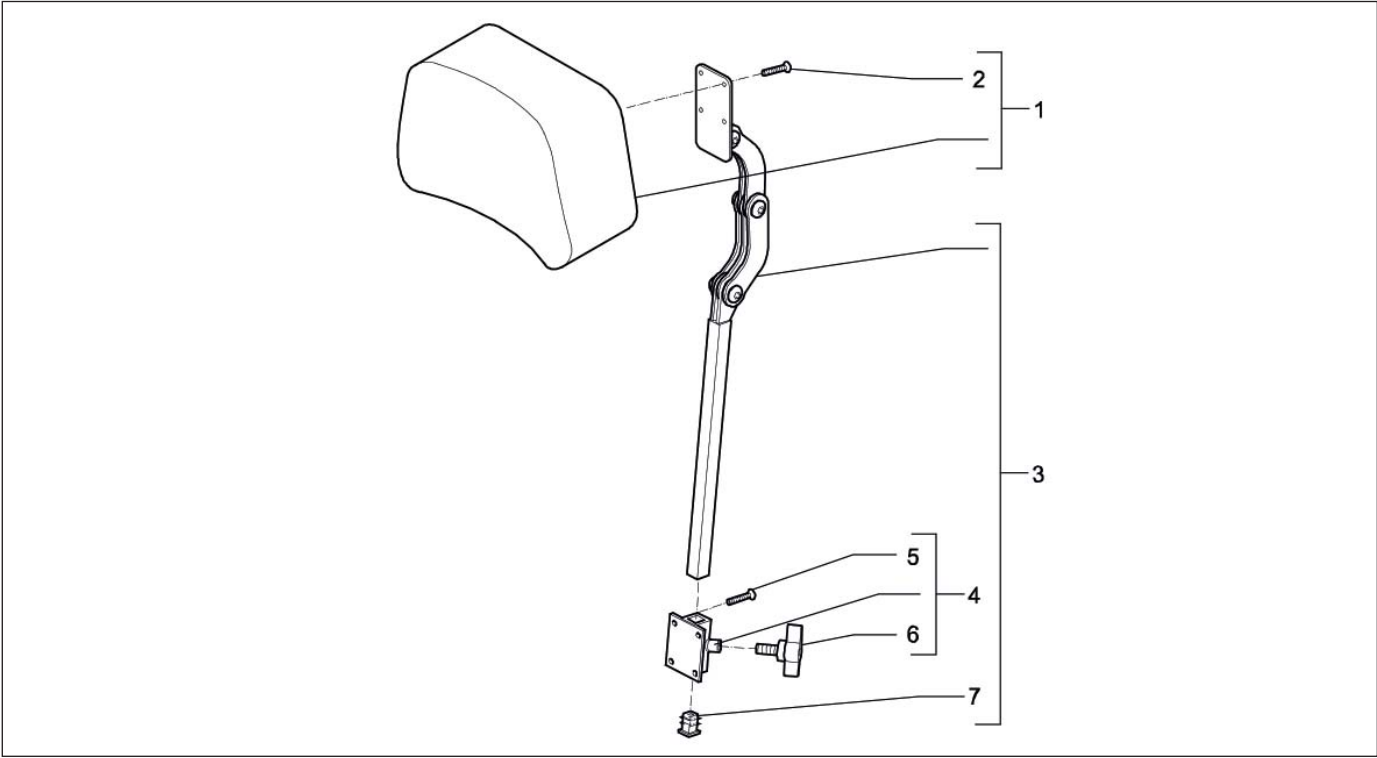
Pos	Qty	Article number	Description
1	2	221.00111.505	Armrest 40 cm
1	2	221.00131.505	Armrest 30 cm
2	4	00000.3206	Screw M5X16
3	2	02040.0311	Upper part long
3	2	02040.0111	Upper part short
4	2	00000.3541	Adjusting screw M8X10
5	2	9002127	Centre piece
5	2	9002129	Centre piece extended 10cm
6	2	224.00241.505	Side cushion
7	2	02040.0782	Bracket
8	4	00000.3207	Screw M5X20
9	1	1008038	PU armrest soft, left, XA
9	1	1008037	PU armrest soft, right, XA
10	4	1003060	Thread cutting screw M5x16
11	2	9000956	Armrest holder
12	2	00000.3541	Adjusting screw M8X10
13	2	9002127	Centre piece
14	2	1008039	Side plate standard, Ibis XA
15	4	00000.3206	Screw M5X16
16	2	02040.0782	Bracket
17	4	00000.1700	Locknut M5
-	1	02043.9111	Angle adjustable armrest for 40cm armrest, right
-	1	02043.9211	Angle adjustable armrest for 40cm armrest, left
-	1	02043.9011	Angle adjustable armrests for 40cm arm rests, set
-	1	233.00011.000	Angle adjustable armrest for 30cm armrest, right
-	1	233.00111.000	Angle adjustable armrest for 30cm armrest, left
-	1	221.00321.011	Angle adjustable armrests for 30cm armrest set
-	1	05364.9123	Armrest, foldable, right, for seat width 42-46
-	1	05364.9223	Armrest, foldable, left, for seat width 42-46
-	1	1010809	Armrest, foldable, right, for seat width 50
-	1	1010810	Armrest, foldable, left, for seat width 50
-	1	1010811	Armrest, foldable, right, for seat width 54
-	1	1010812	Armrest, foldable, left, for seat width 54

## 11b Armrests / Puma YeS



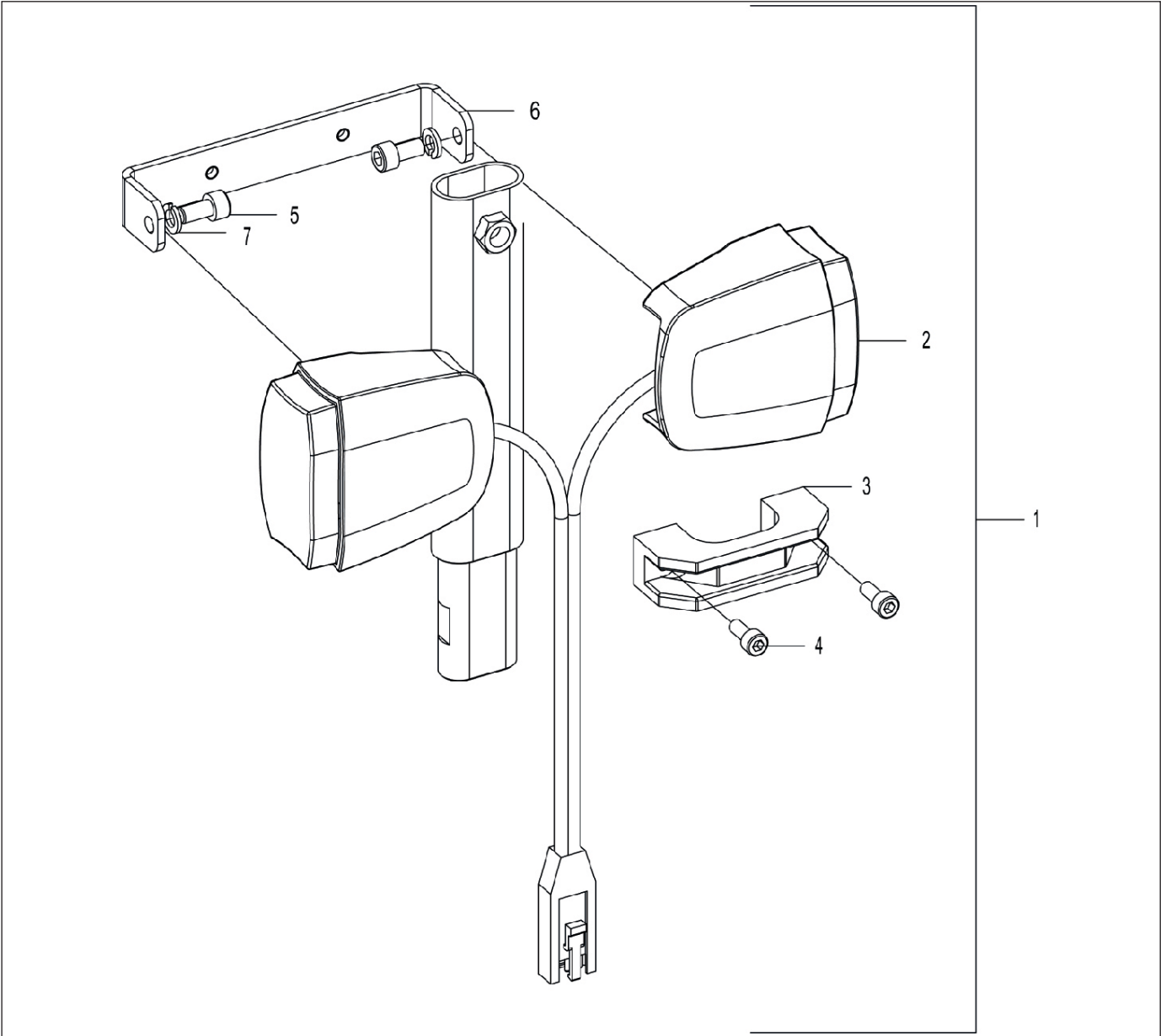
Pos	Qty	Article number	Description
1	1	05373.9490	Armrest PU left
1	1	05373.9390	Armrest PU right
1	1	221.00131.505	Armrest 30 cm, black Sellaskin
1	1	221.00111.505	Armrest 40 cm, black Sellaskin
1	1	221.00301.505	Armrest P-Shape L/H, black Sellaskin
1	1	221.00291.505	Armrest P-Shape R/H, black Sellaskin
2	4	00000.2201	Spring washer M5 D127B/VZ
3	4	00000.3207	Screw BCK/KR M5X20 D7985
4	1	05040.0223	Armrest upper part left for armrest PU
4	1	05040.0123	Armrest upper part right for armrest PU
4	2	02040.0123	Armrest upper part short for armrest 30cm
4	2	02040.0323	Armrest upper part long for armrest 40cm
5	2	05372.9390	Side Cushion PU
5	2	224.00241.505	Side cushion, upholstered, black Sellaskin
5	1	224.00281.505	Side Cushion Wedge Shaped L/H
5	1	224.00261.505	Side Cushion Wedge Shaped R/H
6	4	00001.0551	Cap
7	4	00000.1700	Lock nut M5 D985/8/VZ
8	4	00000.5721	Spacer bush 5.2X15X10 PE Black
9	2	05372.0223	Strip
10	2	02040.0782	Bracket
11	4	00000.3213	Screw M5x35
12	2	00000.3501	Adjusting screw BZK M8X10 D913/VZ
13	2	9002126	Arm rest mounting bracket
-	1	02043.9111	Angle adjustable armrest, right
-	1	02043.9211	Angle adjustable armrest, left
-	1	02043.9011	Angle adjustable armrests, set
-	1	233.00011.000	Angle adjustable armrest for 30cm armrest, right
-	1	233.00111.000	Angle adjustable armrest for 30cm armrest, left
-	1	221.00321.011	Angle adjustable armrests for 30cm armrest set
-	1	05364.9123	Armrest, foldable, right
-	1	05364.9223	Armrest, foldable, left

12 Headrest



Pos	Qty	Article number	Description
1	1	222.00151.505	Headrest type 4, small mode, black Sellaskin
1	1	222.00131.505	Headrest Type 3, Flexible, black Sellaskin
1	1	222.00111.505	Headrest Type 2, Large, black Sellaskin
2	8	00000.3206	Screw bck/kr M5X16 D7985
3	1	02193.0023	Metal Section Headrest. Standard Adjustable
3	1	02194.0023	Metal Section Headrest. With Adjustable Width
3	1	906.00000.161	Metal Section Headrest. With angle lever
4	1	01183.9023	Headrest adjustment holder
5	8	00000.3206	Screw bck/kr M5X16 D7985
6	1	00000.6801	Star knob outs M8X30 BLACK MH
7	1	00000.9301	Insert cap 15mm square

13 LED lighting



Pos	Qty	Article number	Description
1	2	1011638	LED light unit (LHS=RHS)
2	2	1014193	Head light white LED
3	2	1014194	Rear light red LED
4	4	1014192	LED T10 24V
5	1	264.00111.000	Indicator light (set of 2)
6	2	1272	Bulb 24v 5w ba9s
7	2	1001724	Grommet
8	2	00000.9009	Insert cap round 15 Black
9	2	1001436	Compact lighting, mounting plate
10	4	00000.3618	Screw M6X8

## 5 Service instructions

### 5.1 Maintenance plan

Below, we have indicated what needs to be checked, how often this should be done and by whom.

Time	Description	To be carried out by	
		User	Supplier
Monthly	• Cleaning the seating system.	x	-
	• Cleaning the upholstery (if necessary).	x	-
Annually	• Inspecting the mechanical parts	-	x
	• Checking all fastenings and bolts: tighten if necessary	-	x

This document is a reference book to be used to order parts for the Sedeo seating system.

## 5.2 Assembly replacement and adjustment instructions

### Mounting the backrest with straps active flexible on Sedeo Original backrest frame

#### Preparation

**Note!** Switch off the wheelchair via remote control (power wheelchair only).

#### Instructions

**Note!** Suitable work area required!

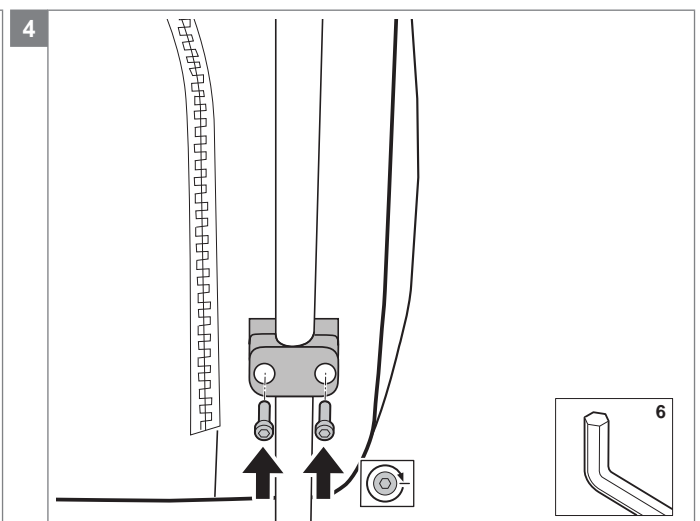
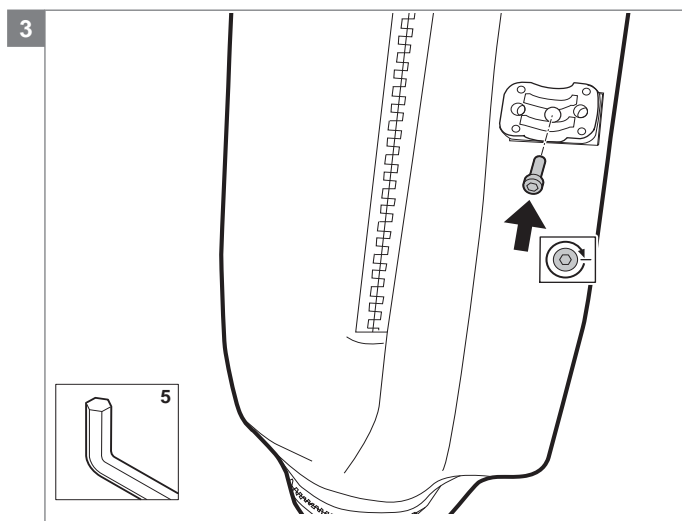
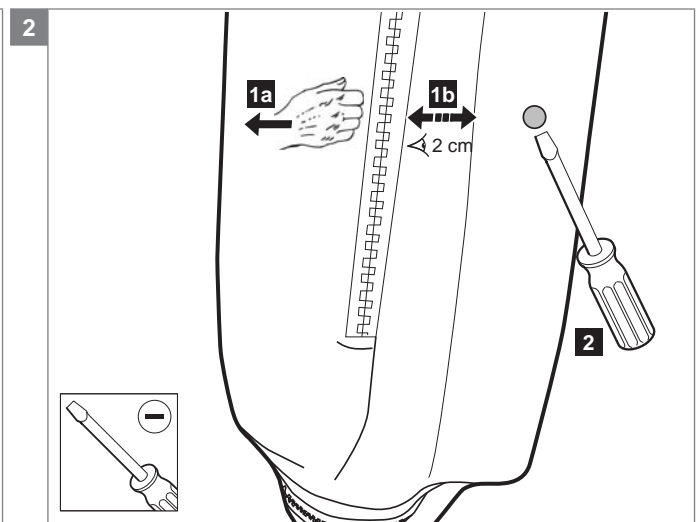
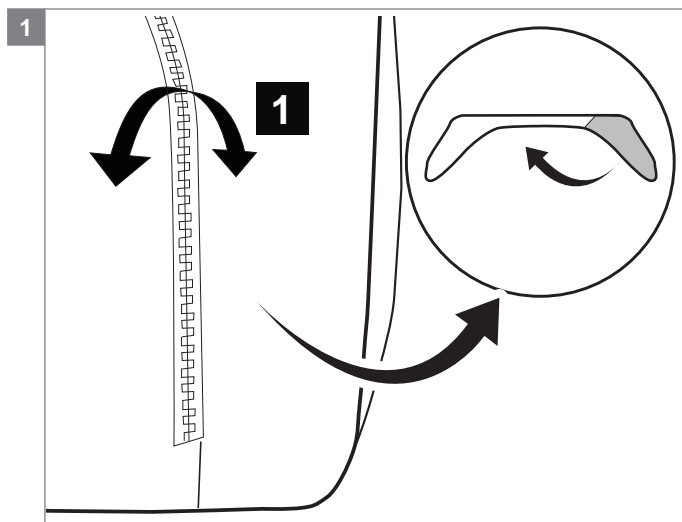
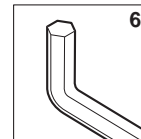
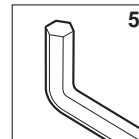
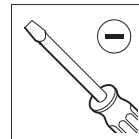
- Fold the seat cushion
- Prick holes in the upholstery.  
Note! Make sure these are in the right position. Fold the side panels so there will be about 2 cm upholstery between the wooden plate and the zipper.
- Mount the stauff block on the backrest cushion
- Mount the backrest cushion on the backrest frame

#### Relevant article numbers

- 1012293 - 1012300: Backrest flexible with adjustable straps passive, stretch rubber
- 1012277 - 1012284: Backrest flexible with adjustable straps passive, comfort

- 1012301 - 1012308 / 9008341 - 9008344  
Backrest flexible with adjustable straps active, stretch rubber
- 1012285 - 1012292 / 9008337 - 9008340  
Backrest flexible with adjustable straps active, comfort
- 9008357 - 9008368 Extra deep backrest flexible with adjustable straps active, stretch rubber
- 9008345 - 9008356 Extra deep backrest flexible with adjustable straps active, comfort

#### Tools used



## 6 Trouble shooting

If the Sedeo seating system is not working or not working as it should, contact your supplier.



## 7 Specifications

### 7.1 CE declaration of conformity



The product is in conformity with the provisions of the Medical Devices Directive and carries the CE mark.

The product also meets the following requirements and standards. This has been verified by independent test organizations.

1. EN 12183 (2009) Manual seating systems or EN 12184 (2009) Electrically powered seating systems.
2. ISO 7176-8 Requirements for impact, static and fatigue strength.
3. ISO 7176-9 Climatic tests for electric seating systems and scooters.
4. ISO 7176-16 Requirements for resistance to ignition of upholstered parts.
5. ISO 7176-19 Crash test.
6. EN-ISO 10993-5 (1999-11) Biological evaluation of medical devices.
7. EN 1021 1,2 Assessment of the ignitability of upholstered furniture. Ignition source: smouldering cigarette/match flame equivalent.

## 8 Warranty

### 8.1 Definitions of terms

Definitions of terms used in this warranty:

- Consumable part: Part that is subjected to natural wear and tear or natural contamination during normal operation within the lifetime of the product (section 9 of Handicare's general terms and conditions of sale);
- Client: Those who purchase the product directly from Handicare;
- Corrective action: Repair, replace or refund of the product;
- Dealer: Those who re-sell the product to the User;
- Defect: Any circumstance due to which the product is not sound or fit to use, caused by a lack of quality of the material used to manufacture the product as well as the quality of the manufacturing process;
- Option: An accessory delivered by Handicare to extend the standard product model;
- Product: Product that is delivered according to brochure or contract (e.g. wheelchair, scooter, battery-charger etc.);
- Part: Part of product that can be exchanged or replaced. This can be an option, accessory, service part or consumable part;
- Returns: Product or part that needs to be returned;
- RMA-process: Process to return goods, contact Handicare's Customer Service;
- Service part: Part that is durable and may be subjected to natural wear and tear or natural contamination during normal operation within the lifetime of the product.;
- User: Those who use the product;
- Warranty: The rights and obligations set forth in this document;
- Warranty period: The period of time during which the warranty is valid;
- Warranty provider: Handicare B.V., Vossenbeemd 104, 5705 CL Helmond, The Netherlands.

Notwithstanding the rights and obligations of Handicare, Client and User set forth in Handicare's general terms and conditions of sale, the rights of the Client and/or User towards Handicare in case of defects are limited to the provisions set forth in this warranty. For the duration of the warranty period Handicare guarantees that the product is without defects.

In case of any defects the User is required –within two weeks after discovery of the defect- to contact the dealer. He has to complete a return form and return the product or part via the RMA-process. Handicare will, at its sole discretion, take the corrective action it seems fit under the given circumstances within a reasonable period of time (depends on nature of claim) from receipt of the completed return form. The warranty period will not be extended after a corrective action.

### 8.2 Warranty period table

#### Seating

Description	Warranty period	Examples include, but are not limited to the parts mentioned below
<b>Frame</b>	2 years	Weldment/frame
<b>Electronics</b>	1 year	Electronic components
<b>Service Parts</b>	New: 1 year after invoice Repaired: 90 days after invoice	Metal parts
<b>Consumable parts</b>	40 days after invoice	Upholstery etc.
<b>Options/ Accessories</b>	2 years	Lap strap, bag brackets etc. Not being service part or consumable part.

Handicare will only accept shipment costs and corrective costs related to warranty on equipment during the warranty period.

This warranty will void in case of:

- The product and/or its parts being modified or items having been added by others than Handicare;
- Changes in cosmetic appearance by use;
- Failure to observe the instructions for use and maintenance, use other than normal use, wear and tear, negligence, collateral damage by neglect of earlier symptoms, overloading, third-party accidents, non-original parts used and defects not caused by the product;
- Circumstances beyond our control (flood, fire, etc.).

This warranty does not cover:

- Tyres and inner tubes
- Batteries (covered by the battery manufacturer's warranty).

Clients and/or Users have legal (statutory) rights under applicable national laws relating to the sale of consumer products. This warranty does not affect statutory rights you may have nor those rights that cannot be excluded or limited, nor rights against the entity from whom the product was purchased. Clients may assert any rights they have at their sole discretion.

Version	Page	Draw	Changes
2014 V1	10	01	Added position 22 till 27 in part list
	22	08	Added article number 01273.9110 (position 11) and updated drawing
			Updated all page references
2015 V1	10	1a	Exchanged article numbers 9001181 and 9001182, they were reversed. 9001181 is right 9001182 is left.
	12	2	Changed article number 1007684 into 9008656
	18	5	Added article number 9002617
	19	6	Added article numbers 1009562 and 1008492
	22	8	Added article number 1002599
	23	9	Added article numbers 906.00000.111, 906.00000.121 and 1002599
	24	10	<ul style="list-style-type: none"> <li>Added article number 9001233, 01500.2923 and 1002599</li> <li>Updated drawing</li> </ul>
	31		Added service instruction 'Mounting the backrest with straps active flexible on Sedeo Original backrest frame'
	34		Updated warranty text



Handicare B.V.  
Vossenbeemd 104  
5705 CL Helmond  
The Netherlands

T +31 (0)492 593 888  
F +31 (0)492 537 931  
[www.handicare.com](http://www.handicare.com)