

Dental- Information

Sirona Dental Systems • Fabrikstrasse 31 • D-64625 Bensheim

September 2002

The topics in this issue:

General

Factory holiday on 4 October Page 3

Seminar and training dates

New course brochure/courses for dental sales representatives Page 4

Treatment centres

Correction C3⁺/C4⁺/C3/C4/C6/C8: Treatment centres with mechanical headrests – conversion from broad backrest to narrow backrest Page 5

C6: amalgam separator Page 6

C1-C4, C1⁺-C4⁺: faster assistance via new service codes Page 6

C1⁺-C4⁺ water unit with automatic separator: siphon discontinued Page 6

Junction box cover: stress-free fitting of the cover prevents damage to the fixing lugs Page 7

Articulated headrest: more even adjustment of the headrest Page 7

ProFeel: new spare part for the cuspidor support arm Page 8

Sirona M1 A/E: new screw-in nipple prevents drips Page 8

SIROLUX E/F: securing the vertical joint brake of the lamp crown Page 8

Patient communication

Retrofitting of SIVISION 3 to C1 (as from serial number 3000), C2 and C4 Page 9

PC software SIVISION and frame grabber card now compatible with Windows® XP Professional Page 9

SIVISION 2/3: please use only Leutron card and drivers supplied by Sirona Page 10

X-ray

SIDEXIS Page 11

SIDEXIS version 5.3 and higher – X-ray LAN components Page 12

CEREC

ZIRCONIA CZ-18 blanks for CEREC Page 13

Handpieces

New address for individual repairs to Sirona handpieces Page 14

Delivery times

Status: September 2002 Page 15

Topics covered in previous issues

Index

General

Diagnostic system 03/02, p. 3; 06/02, p. 3
Credits
General conditions of sale
Price lists
Paintwork and upholstery colours
Quality of products and services

Treatment centres

General 01/02, p. 5; 02/02, p. 4; 03/02, p. 5; 06/02, p. 5; 07/02, p. 5; **09/02, p. 5**
E generation 06/02, p. 8
M1 06/02, p. 8; **09/02, p. 7**
C1+ 03/02, p. 5; 06/02, p. 5; **09/02, p. 5**
C2+ 02/02, p. 4; 03/02, p. 5; 06/02, p. 7; **09/02, p. 5**
C3+ 03/02, p. 5; 06/02, p. 7; **09/02, p. 5**
C4+/C4+ cart version 03/02, p. 5; 06/02, p. 7; **09/02, p. 5**
C6 03/02, p. 5; **09/02, p. 5**
C8 03/02, p. 5; **09/02, p. 5**
SIROLUX S/Fantastic 06/02, p. 9; **09/02, p. 7**
Tray
Chairs

Patient communication

General 01/02, p. 9; 02/02, p. 5; 03/02, p. 6; 04/02, p. 5; 05/02, p. 5; 06/02, p. 10; **09/02, p. 9**
SIROCAM 01/02, p. 9; 07/02, p. 12
SIVISION 01/02, p. 9; 02/02, p. 5; 03/02, p. 6; 05/02, p. 5; 06/02, p. 11; 07/02, p. 11; **09/02, p. 9**

X-ray

General 03/02, p. 7; 05/02, p. 6; 06/02, p. 12; **09/02, p. 11**
HELIODENT DS
HELIODENT *Vario*
ORTHOPHOS 3 06/02, p. 12
ORTHOPHOS 3 Ceph 06/02, p. 12
ORTHOPHOS 3 DS 06/02, p. 12
ORTHOPHOS 5 06/02, p. 12
ORTHOPHOS Plus 06/02, p. 12
ORTHOPHOS Plus Ceph 06/02, p. 12
ORTHOPHOS Plus DS 06/02, p. 12
ORTHOPHOS Plus DS Ceph 06/02, p. 12
SIDEXIS 01/02, p. 14; 03/02, p. 7; 04/02, p. 6; 05/02, p. 6; 06/02, p. 12; **09/02, p. 11**
USB Box 01/02, p. 10; 04/02, p. 6

CEREC

General 02/02, p. 6; 03/02, p. 10; 06/02, p. 16; 08/02, p. 4; **09/02, p. 13**
Software 04/02, p. 5
Further training
CEREC 2
CEREC 3 03/02, p. 10; 04/02, p. 9
CEREC *Scan* 02/02, p. 6; 06/02, p. 16; 08/02, p. 11; 08/02, p. 4
CEREC *Link*
CEREC inLab 03/02, p. 10; 06/02, p. 16; 08/02, p. 11; 08/02, p. 4

Sterilizers/care systems

HYGIENE CENTER 02/02, p. 7; 06/02, p. 17
VALIDATOR Plus
SIROCLAVE B/VS/S 01/02, p. 16; 06/02, p. 17
SIROSEAL 06/02, p. 18

Handpieces

General 02/02, p. 8; 03/02, p. 5; **09/02, p. 14**
High-speed handpieces
T1 TITAN 02/02, p. 8; 03/02, p. 12
T1 LINE 03/02, p. 11
T1 CLASSIC
SIROSON L
SIROSON S
SIROSONIC 04/02, p. 10
SIROSONIC L 04/02, p. 10
SIROPRO
SIROTOM S
SPRAYVIT
SIRONA motors

Practice furniture

STUDIO 5000/FUNCTION 5000

Advertising/advertisements

General

Factory holiday on 4 October

We would like to inform you that our company will remain closed on

4 October 2002.

However, you will still be able to reach our Dispatch Department and our Customer Service Centre during the usual opening hours (see the June 2002 issue of Dental Information; the relevant phone numbers are listed on the back page of this issue of Dental Information).

Seminar and training dates

New course brochure/courses for dental sales representatives

We have enclosed our new course brochure containing all the seminar and training dates for 2002/2003.

Extracts from training programme will be published in Dental Information.

For further details about the content and goals of individual courses, please refer to the 2002/2003 programme.

Basic training: CEREC inLab	Advanced training: Treatment centres
15 November 2002	25 – 26 November 2002

Advanced training: Hygiene systems and handpieces	Advanced training: X-ray systems
26 November 2002	27 – 28 November 2002

Treatment centres

C3⁺/C4⁺/C3/C4/C6/C8

Correction: Treatment centres with mechanical headrests – conversion from broad backrest to narrow backrest

Unfortunately, an incorrect REF. number was quoted for the “narrow upholstery element, replacement”. To avoid ordering problems, we request you to use the REF. number shown below.

With immediate effect we can supply a backrest conversion kit for the C3⁺/C4⁺/C3/C4/C6/C8 treatment centres. Only those treatment centres with a flat or articulated headrest can be converted. In these cases, the existing headrests can be retained. The conversion kit consists of the backrest support and cover panels for the backrest and the headrest sword (grey colour).

In addition, you must order an upholstery element in the colour of your choice.

To ensure that the backrest and headrest make an attractive visual impression, we recommend that the grey-white covers of the headrest components are replaced by their new grey-coloured counterparts.

Designation	REF.	EUR excl. VAT	Pr. Gr.
Conversion kit for narrow backrest	59 37 102	250.00	29
Narrow upholstery element, replacement (please indicate colour)	59 06 255	535.00	29

Covers for the articulated headrest:

Designation	Colour	REF.	EUR excl. VAT	Pr. Gr.
Headrest cover	manganese grey	59 11 909	47.80	29
Sword cover	manganese grey	59 11 891	18.50	29

Cover for the flat headrest:

Designation	Colour	REF.	EUR excl. VAT	Pr. Gr.
Cover for flat headrest	manganese grey	59 11 883	37.00	29

C6: new amalgam separator

With effect from September 2002, the Dürr separator (used since the launch of the C6 in 1999) will be replaced by the Sirona amalgam separator (which has already proved highly effective in the C1⁺-C4⁺ product family). In terms of function and quality, the Sirona separator meets our company's stringent standards. As we are able to use in-house components, we are in a position to sell the amalgam separator at an attractive price. The Sirona amalgam separator will be factory-fitted to all C6 treatment centres ordered with this option. It will also be available as a retrofit option.

Spare parts will continue to be available for existing water units. As from serial number 25 000, the supplementary sheet 59 42 565 will apply to the spare parts list for the C6 treatment centre.

The order details for the amalgam separator are as follows:

Designation	REF.	EUR excl. VAT	Pr. Gr.
Additional charge for C6 with Sirona amalgam separator	59 39 611*	1,570.00	
Retrofit kit, amalgam separator	59 36 922	1,950.00	01

* The REF. number quoted here is for ordering purposes only. It does not appear on the order and delivery documents.

C1-C4, C1⁺-C4⁺: faster assistance via new service codes

We have introduced a set of smart codes in order to simplify service and maintenance procedures for our treatment centres (standard as well as high-end models). The codes can be read out via the control panel or a notebook computer. In combination with the service manual, the codes provide a reliable indication of the status of the treatment centre.

If you require the assistance of our Customer Service Centre, we recommend that you have the service codes ready to send by fax or e-mail. This will enable us to deal with your questions more quickly and effectively.

C1⁺-C4⁺ water unit with automatic separator: siphon discontinued

As part of the product improvement process, the **siphon (REF. 14 31 076)** and the **hose piece (REF. 14 35 648)** will be discontinued. In addition, the transparent ventilation hose of the lye pump will be replaced by a blind plug. Water units with amalgam separators are not affected by this modification. The spare parts lists will be amended accordingly.

Introduction data: Water unit C1⁺ as from serial no. 10 094
 Water unit C2⁺ as from serial no. 56 069
 Water unit C3⁺/C4⁺ as from serial no. 21 583

Junction box cover: stress-free fitting of the cover prevents damage to the fixing lugs

The two fixing lugs of the junction box cover are screwed to the mounting brackets of the baseplate dome. The fixing lugs must be correctly aligned with the mounting brackets. If necessary, you should adjust the position of the fixing lugs in order to eliminate any gaps. In this way you can minimize mechanical stress and prevent damage to the fixing lugs.

Articulated headrest: more even adjustment of the headrest

The adjusting force of the articulated headrest is influenced by a brake block, which is pressed against a steel axle by means of an adjustable spring with a threaded spindle. The adjusting force can diminish for the following two reasons :

1. The adjustable spring no longer exerts the required pressure on the brake block and steel axle.

Solution: Adjust the spring tension by means of the threaded spindle and fix the spindle in this position by applying thread locking compound.

2. The axle on which the brake block operates is coated with grease. This significantly reduces friction. Sufficient braking effect cannot be obtained, even when the spring tension is set to maximum via the threaded spindle.

Solution: Degrease the axle (e.g. by using a detergent solution) and fit a new **brake block (REF. 14 32 918)**.

ProFeel: new spare part for the cuspidor support arm

To facilitate repairs to a broken support-arm mounting, we have introduced a new **service kit (REF. 59 23 102, EUR 49.00, excl. VAT, Pr. Gr. 29)**. Please amend your spare parts list accordingly.

Sirona M1 A/E: new screw-in nipple prevents drips

Due to a chemical reaction between the **screw-in nipple (REF. 29 44 304)** and DENTOSEPT in the disinfection system, gas bubbles can form in the water channels. This can cause the valves to leak, leading ultimately to water drips from the handpieces. For this reason, the screw-in nipple is now made of stainless steel instead of a copper-nickel alloy. This modification took effect at the end of April 2002.

Sirolux E/F: securing the vertical joint brake of the lamp crown

In certain cases, the grub screw of the vertical joint brake can work itself loose. With effect from 23 May 2002, this grub screw has been secured with a thread locking compound. In the event of repairs we recommend that you use the commercially available thread locking compound **Loctite 242**.

Important note: Thread locking compound can cause cracking in plastic materials. Please ensure that the thread locking compound does not come into contact with plastic components.

Patient communication

Retrofitting of SIVISION 3 to C1 (as from serial number 3000), C2 and C4

In the July 2002 issue of Dental Information we described the possibilities for retrofitting SIVISION 3 to C1 (as from serial no. 3000), C2 and C4. Please note that the SIVISION 3 retrofit kit is **not compatible with trays which have the following REF. numbers (see nameplate):**

14 31 738

14 32 736

51 71 025

51 71 033

These trays are not designed to accommodate a monitor and can break off due to the fact that the flexible support arm is attached directly to the column. In the case of the current tray version, the rigid part of the support arm is attached to the support column. We therefore request you to use only retrofit kits which are complete with tray.

Please contact our Customer Service Centre if you have equipped one of the above-mentioned trays with SIVISION 3.

SIVISION can only be fitted to the current clip-on version of the tray (**REF. 54 43 200**).

PC software SIVISION and frame grabber card now compatible with Windows® XP Professional

With immediate effect, the PC software SIVISION and the PicPort Color frame grabber card (made by Leutron) can be used on PCs running under the operating system Windows® XP Professional.

The current version (3.3) of SIVISION (SIUCOM) is fully compatible with Windows® XP Professional.

The new driver version 1.94 for the PicPort Color frame grabber card will become available as from September 2002.

Users who wish to update existing installations can order an **update CD with the frame grabber driver software (REF. 58 85 640, EUR 13.20, excl. VAT, Pr. Gr. 29)**.

With regard to VIDEXIS in combination with Windows® XP, we refer you to the April and May issues of Dental Information.

The new driver version also supports the Video for Windows standard. Unlike many other frame grabber cards on the market, PicPort Color supports multi-monitor operations with the aid of a dual head graphics card. In addition, the size of the video window is optimally matched to the image size of our video cameras.

SIVISION 2/3: please use only Leutron card and drivers supplied by Sirona

The frame grabber card and drivers supplied by Sirona have been specially adapted to SIDEXIS/VIDEXIS and SIVISION applications. The card and drivers offered by Leutron on the open market and on the Internet **cannot be used** as they lack specific adaptations. For the same reason, the drivers cannot be updated via the Leutron homepage.

The current Sirona-specific version of the frame grabber card and version 1.94 of the driver software can be ordered as from the beginning of September (REF. 46 93 961).

SIDEXIS

Image changes affecting SIDEXIS, Version 5.5

Important note: In connection with our routine product monitoring we became aware of the following isolated case:

Unwanted image changes can occur when SIDEXIS, version 5.5, is operated at the unusual colour depth setting of 256 colours in combination with instantaneous image compression. This phenomenon occurs only in the case of version 5.5. Previous and subsequent versions are not affected.

Customers who are compelled to use the 256 colour depth setting should update to version 5.54 of SIDEXIS. This update is available free of charge under the REF. numbers listed below. Please indicate the order number of the original software version when placing orders.

If members of your service team come across systems with a colour depth setting of 256, they should perform the corresponding update.

REF. 59 43 480, SIDEXIS UPDATE 5.5x, German

REF. 59 43 498, SIDEXIS UPDATE 5.5x, English

REF. 59 43 506, SIDEXIS UPDATE 5.5x, French

REF. 59 43 514, SIDEXIS UPDATE 5.5x, Italian

REF. 59 43 522, SIDEXIS UPDATE 5.5x, Spanish

REF. 59 43 530, SIDEXIS UPDATE 5.5x, Dutch

REF. 59 43 548, SIDEXIS UPDATE 5.5x, USA

New REF. numbers for updates:

The SIDEXIS UPDATE 5.5x (REF. 59 17 500) can now be ordered in various languages at a cost of EUR 405.00 per language. This update brings the software up to the currently valid version 5.54. The relevant user manual will be shipped together with the update.

REF. 59 43 480, SIDEXIS UPDATE 5.5x, German, EUR 405.00, excl. VAT

REF. 59 43 498, SIDEXIS UPDATE 5.5x, English, EUR 405.00, excl. VAT

REF. 59 43 506, SIDEXIS UPDATE 5.5x, French, EUR 405.00, excl. VAT

REF. 59 43 514, SIDEXIS UPDATE 5.5x, Italian, EUR 405.00, excl. VAT

REF. 59 35 522, SIDEXIS UPDATE 5.5x, Spanish, EUR 405.00, excl. VAT

REF. 59 43 530, SIDEXIS UPDATE 5.5x, Dutch, EUR 405.00, excl. VAT

REF. 59 43 548, SIDEXIS UPDATE 5.5x, USA, EUR 405.00, excl. VAT

L/R marking of XC images

SIDEXIS offers an optional L/R marking function for X-ray images. When this function is activated, the letter "R" **always** appears in the bottom right-hand corner of panoramic X-ray images. This marking is not to be confused with the R/L marking on conventional X-ray exposures.

In the case of panoramic X-rays, the letter "R" does not relate to the direction of the X-ray beam. Instead, its function is to ensure that the exposure is viewed the right way round (i.e. not from back to front).

SIDEXIS version 5.3 and higher – x-ray LAN components

At the installation of an x-ray LAN component via the utility SiXABCon.exe the following effects can appear in the so-called boot process:

- The new component isn't recognized.
- Configuration cannot be applied.

These effects are dependent on the operating system of the configuring PC and the physical network connection.

They may occur in conjunction with the operating systems Windows ME, 2000 or XP using the crossover cable enclosed (peer-to peer) or with a programmable switch (19").

Cause for it is the changed behaviour at the operating systems mentioned before when recognizing the network connection status (animation of the network connection connected/disconnected).

We recommend to use a simple HUB between PC and x-ray LAN component for the duration of the configuration. Through this, the network connection status is recognized as actively on the PC.

After completion of the configuration the HUB should be removed again.

SIRescue in combination with SIDEXIS systems

In the September/October 2000 issues of Dental Information we informed you about the application of the program SIRescue. Versions 5.28 and higher of SIDEXIS offer an additional function ("Autorescue"), which automatically launches SIRescue as soon as image transmission problems occur. The image transmission process is then repeated.

Please note that SIRescue can be tested only in combination with radiation. SIRescue cannot be activated in the test mode.

Use of switches

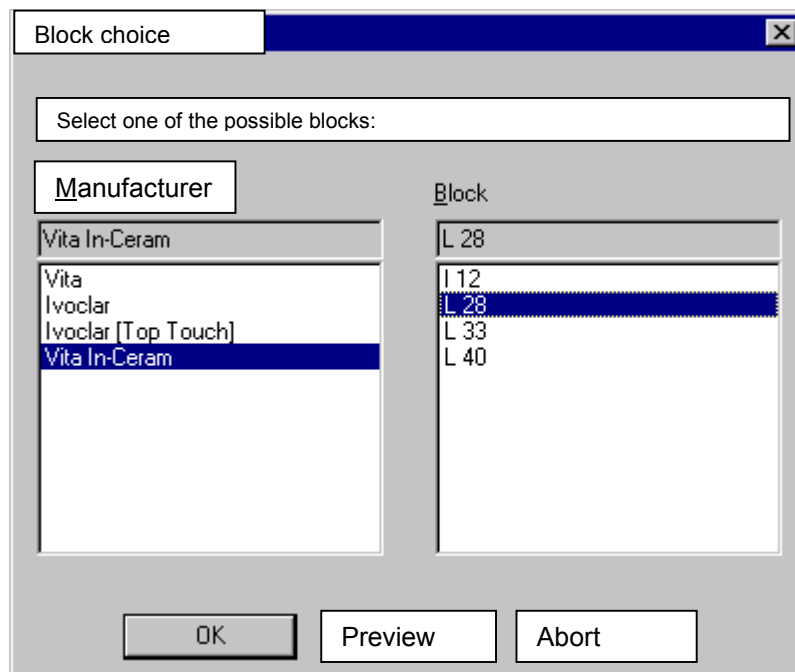
We would like to take this opportunity of reminding you that X-ray LAN components will only work properly if they are linked together via network switches (see installation planning instructions for SIDEXIS).

ZIRCONIA CZ-18 blanks for CEREC

VITA now offers ZIRCONIA CZ-18 blanks (14 x 15 x 18 mm) for the production of CEREC crowns.

VITA order code: ECCZ18; pack of 5 blanks.

The CZ-18 blanks can be machined in all CEREC 3, *Scan* and inLab milling machines in combination with the CEREC inLab software, version ≥ 1.20 R800. In the Select Block menu you must choose the manufacturer **"Vita In-Ceram"** and block type **"L 28"**.



In the next CEREC inLab software update, CZ-18 will be included in this menu, where it can be selected directly.

Handpieces

New address for individual repairs to Sirona handpieces

Sirona will soon be expanding its portfolio to include individual repair and repair-exchange services for dental handpieces.

With effect from 1 October 2002, individual repairs will be carried out by

**Sirona Dental Systems GmbH
Instrument Service Centre (ISC)
Fabrikstrasse 35**

D-64625 Bensheim

The Service Centre will provide your customers with fast and effective support in the event of technical problems.

We will give you further details in the October 2002 issue of Dental Information.

Please note:

In the March 2002 issue of Dental Information we informed you that handpieces and treatment heads in the **T1 TITAN TE and TI ranges will no longer be included in our repair-exchange service as from 1 October 2002.**

However, individual repairs of these handpieces will still be possible.

Delivery times

Status: September 2002

To help you plan more effectively, we provide you with this list of delivery times, updated on a monthly basis. The quoted delivery times are calculated as from the receipt of your order at the Bensheim factory. To avoid delays, please make sure that you submit all the required information when placing your orders. Subsequent changes to orders can lead to corresponding shifts in the delivery times.

Please pass this information on to the persons responsible in your company.

Treatment centres

C1 ⁺	4	weeks
C2 ⁺	4–5	weeks
C3 ⁺	4–5	weeks
C4 ⁺	4–5	weeks
C6	4–5	weeks
C8	4–5	weeks
C SOLO	4	weeks
C chair	2–4	weeks
SIROLUX Fantastic light (all models)	1–2	weeks
Accessories for treatment centres	1–2	weeks

Sterilizers/care systems

HYGIENE CENTER	4	weeks
SIROCLAVE B	2–4	weeks
SIROCLAVE VS	2–3	weeks
SIROCLAVE S	2–3	weeks
SIROSEAL	1–3	weeks
SIRODEM	1–3	weeks

X-ray

HELIODENT DS	4	weeks
HELIODENT <i>Vario</i>	3	weeks
ORTHOPHOS 3/3 CEPH	3–4	weeks
ORTHOPHOS 3 Digital	4	weeks
ORTHOPHOS Plus/Plus CEPH	3–4	weeks
ORTHOPHOS Plus/Plus CEPH Digital	4	weeks
SIDEXIS	4	weeks

CEREC

CEREC 2 (used equipment)		Upon request
CEREC 3	3–4	weeks
CEREC <i>Scan</i>	3–4	weeks
CEREC <i>Link</i>	1–2	weeks

Handpieces (high-speed, straight, contra-angle)

T1 CLASSIC	2	weeks
T1 LINE	2	weeks
T1/T2/T3 high-speed handpieces	2	weeks

The delivery times relate to the current standard colours (grey-white).

In the case of combined orders of equipment with different delivery times you should be guided by the longest delivery time.

Depending on the day-to-day situation, the delivery times may be shorter or longer. The delivery date confirmed by us will apply. In urgent cases, please contact our Customer Service Centre.

For further information, please contact our Customer Service Centre:

Telephone:

- + 49 (0)6251 - 161616

E-mail and fax:

- *Product services*
E-mail: product.service@sirona.de
Fax: +49 (0)6251 - 161818
- *Order services*
E-mail: order.service@sirona.de
Fax: +49 (0)6251 - 161717



Customer Service Centre