

# manual

h/p/cosmos para control®



**Instruction- & Service manual**  
**h/p/cosmos® para control® version 3.0**

#### **Sales & Service**

h/p/cosmos sports & medical gmbh  
Am Sportplatz 8  
DE 83365 Nussdorf-Traunstein  
Germany  
phone +49 / 86 69 / 86 42-0  
fax +49 / 86 69 / 86 42-49  
email@h-p-cosmos.com  
www.h-p-cosmos.com

#### **Manufactured / Programmed by**

Andreas Ahlers  
Erzstrasse 5  
DE 38678 Clausthal-Zellerfeld  
Germany

E & OE. Errors and Omissions Excepted. Subject to alterations without prior notice.

h/p/cosmos® and h/p/cosmos para control® are registered names of h/p/cosmos sports & medical gmbh / Germany

<b>General information</b> .....	<b>3</b>
A Fields of application for h/p/cosmos para control .....	3
B System requirements .....	4
C Safety notes .....	4
<b>Installation of the software</b> .....	<b>5</b>
A Installation for parallel operation .....	6
<b>Options</b> .....	<b>10</b>
A Select COM Port of the PC .....	10
B Enter device name .....	11
C Choose language .....	11
<b>Operation</b> .....	<b>12</b>
A Operation with running-machines with MCU4 .....	12
A1 Configuration (optional functions) of the running-machine with h/p/cosmos para control .....	13
B Operation with running-machines with MCU2 or MCU3 .....	14
C Solving problems .....	15
<b>Contact</b> .....	<b>16</b>

## General information

### A Fields of application for h/p/cosmos para control

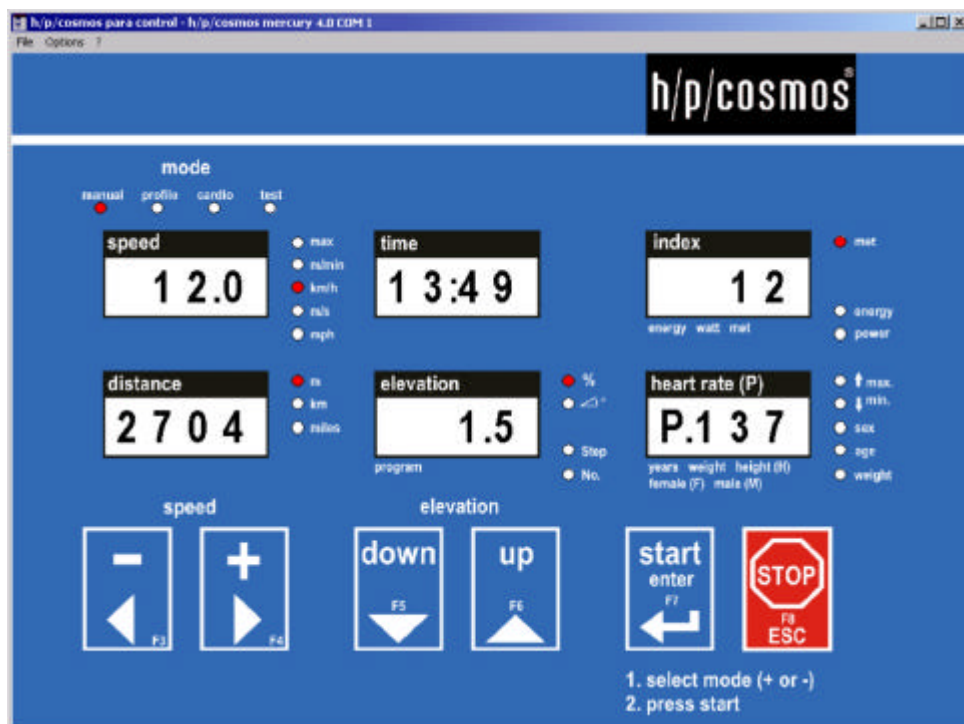
- remote control of h/p/cosmos running-machines and the ladder ergometer h/p/cosmos discovery 4.0
- observation of all h/p/cosmos running-machine / ladder-ergometer parameters on a PC monitor
- service & maintenance work, setup, configurations, programming and display of error codes (obligatory for running-machines and ladder-ergometers without hardware UserTerminal)
- testing the RS 232 interface of the PC, testing the RS 232 interface cable in case of communication problems between ECG or Ergospirometry
- demonstrations for big groups (students, audience, etc.) with the help of a big screen or beamer

The program itself is available free of charge. The RS 232 interface connection cable is extra charge and can be ordered with order number 000 9701 0034.

You can always find the latest version of h/p/cosmos para control in the internet at <http://www.h-p-cosmos.com/english/products/software/>

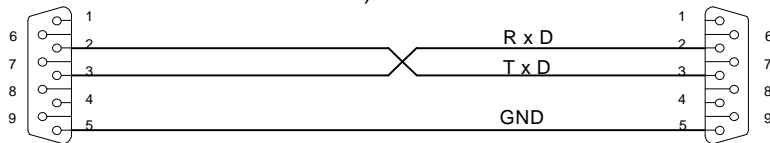
The software can also be ordered via email at [sales@h-p-cosmos.com](mailto:sales@h-p-cosmos.com)

h/p/cosmos para control is a PC based program, simulating display and keyboard of the h/p/cosmos running-machines and ladder ergometers on the PC screen.



## B System requirements

- Personal Computer or laptop / notebook with Pentium Processor or higher  
installed operating system Windows 95 / 98 / NT 4.0 (min. ServicePack 4) / 2000 / XP  
min. 64 MB RAM, min. 50 MB free memory on HD  
VGA-Monitor min. 800 x 600, CD ROM drive
- free RS 232 interface port for connection of any peripheral equipment  
for control via USB interface an optional converter is available at h/p/cosmos  
for control via USB interface the processor must be Pentium 1.8 GHz or higher
- RS 232 interface cable for connection between the ergometer and PC  
(h/p/cosmos order number: 000 9701 0034)



PC COM1 oder COM2  
CONNECTOR DB9  
Buchse / female

Laufband / treadmill  
CONNECTOR DB9  
Stecker / male

- Running-machine with RS 232 interface and selected coscom protocol

## C Safety notes

- Follow the safety notes according to the operation instructions of the equipment. Read through the operation instructions carefully.
- In case of nausea or dizziness of the athlete, the training has to be interrupted and a doctor has to be consulted immediately.
- At troubles (or at suspicion on troubles) of wireless transmitting of the heart frequency the automatic load control may not be used.
- The system may only be used by authorized and trained personal.
- Read through all sections of danger notes, warnings and precautions of the software as well as the running-machine or ergometer carefully.
- No other PC software or program than h/p/cosmos para control must run on the same computer at the same time due to possible conflicts or interference of other software.

## Installation of the software

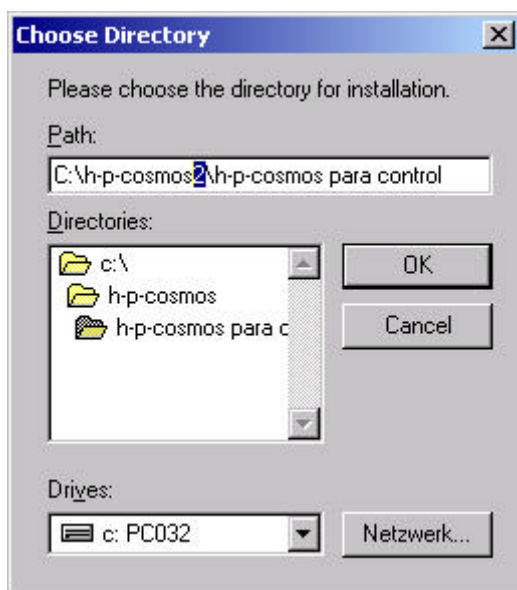
- Power on the h/p/cosmos running-machine.
- Connect the RS 232 interface cable to the RS 232 interface of the running-machine and to a free RS 232 COM port of the PC (if possible COM1)
- Usually on RS 232 / COM1 of the treadmill the coscom protocol is active (standard factory setting OPTION 20 1).
- Do not change anything at this stage unless you face any problems later on.
- Warning! If the running-machine has no UserTerminal (no display and no keyboard) then you must not change the treadmill setting from coscom protocol to any other interface protocol. The coscom protocol is needed at least on ONE COM port of the treadmill for communicating with PC for configurations.
- Bear in mind, that two PC-programs cannot run on one interface ( e.g. COM1 of the PC) at the same time.
- For trouble shooting exit all other programs except for the h/p/cosmos para control on the PC.
- Login under Administrator user with Administrator password on the PC.
- Install the h/p/cosmos para control software (setup program) on the PC.
- Use following recommended installation and de-installation path:  
c:\h-p-cosmos\h-p-cosmos para control
- Use following automatically recommended path for program files:  
c:\h-p-cosmos\program files\h-p-cosmos para control
- When completed the first installation a small icon (+ -) will be added to the desktop of the PC
- Start h/p/cosmos para control by double-click on the icon on the desktop or use Windows function:  
Start/Programs/h-p-cosmos/h-p-cosmos para control



## A Installation for parallel operation

In case h/p/cosmos para control will be used for controlling 1 running-machine only, skip this article and go to next article.

In case more than ONE running-machine shall be controlled via h/p/cosmos para control software from 1 PC (possible up to 6 running-machines if 6 COM-ports on the PC available), then the h/p/cosmos para control software shall be installed in 2 (up to 6) different Path.



In this case use the standard Path (Destination Directory) c:\h-p-cosmos\h-p-cosmos para control (suggested by install software) for the first installation. Then install a second time (up to 6 times per PC) and press "Browse" during

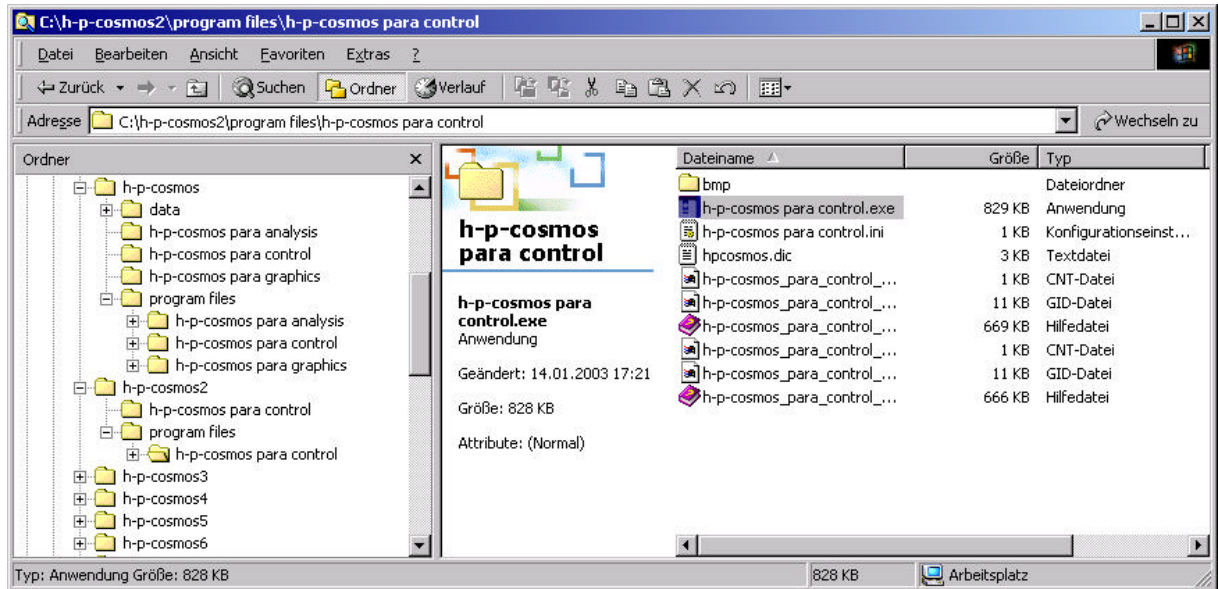
installation procedure and edit the Path to **c:\h-p-cosmos2\h-p-cosmos para control** for the second installation.

this procedure can be repeated up to 6 times for up to 6 installations.

With the help of Windows Explorer then the icons for the desktop have to be created manually from the respective path

**c:\h-p-cosmos2\program files\h-p-cosmos para control** for the second installation

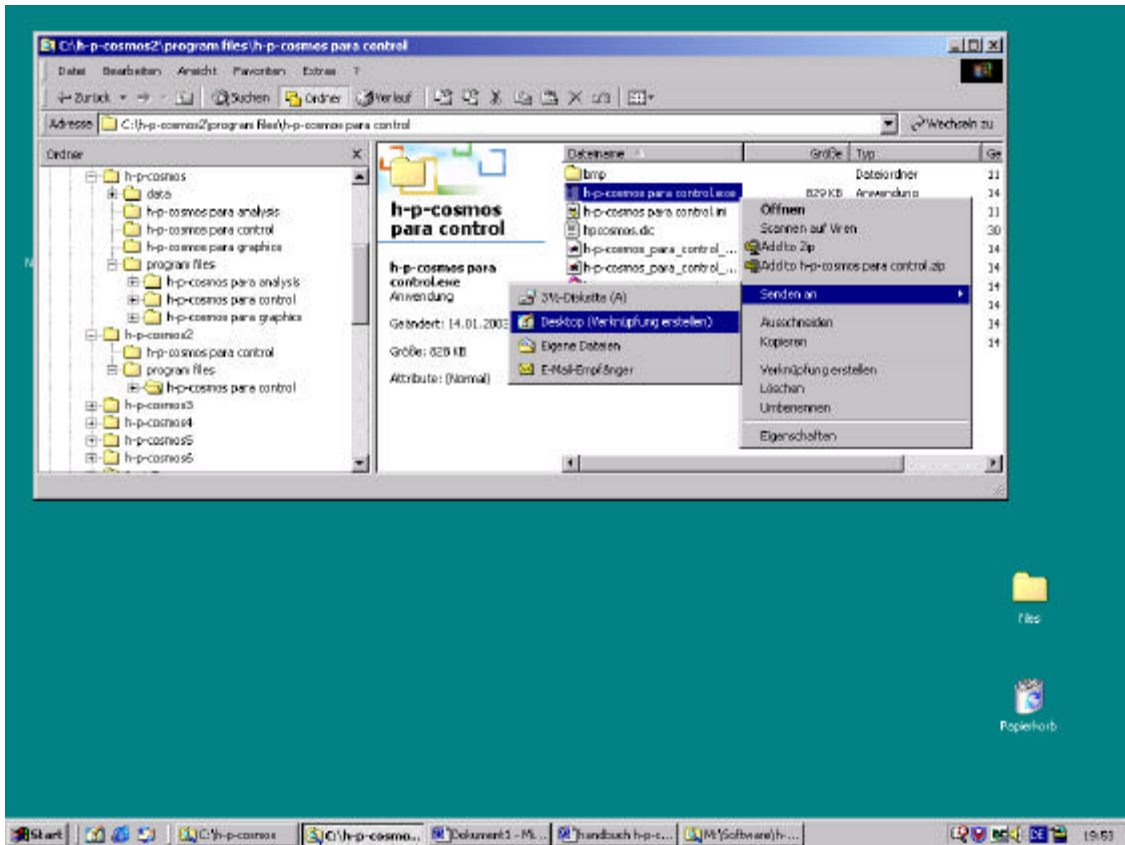
**c:\h-p-cosmos3\program files\h-p-cosmos para control** for the third installation, etc.



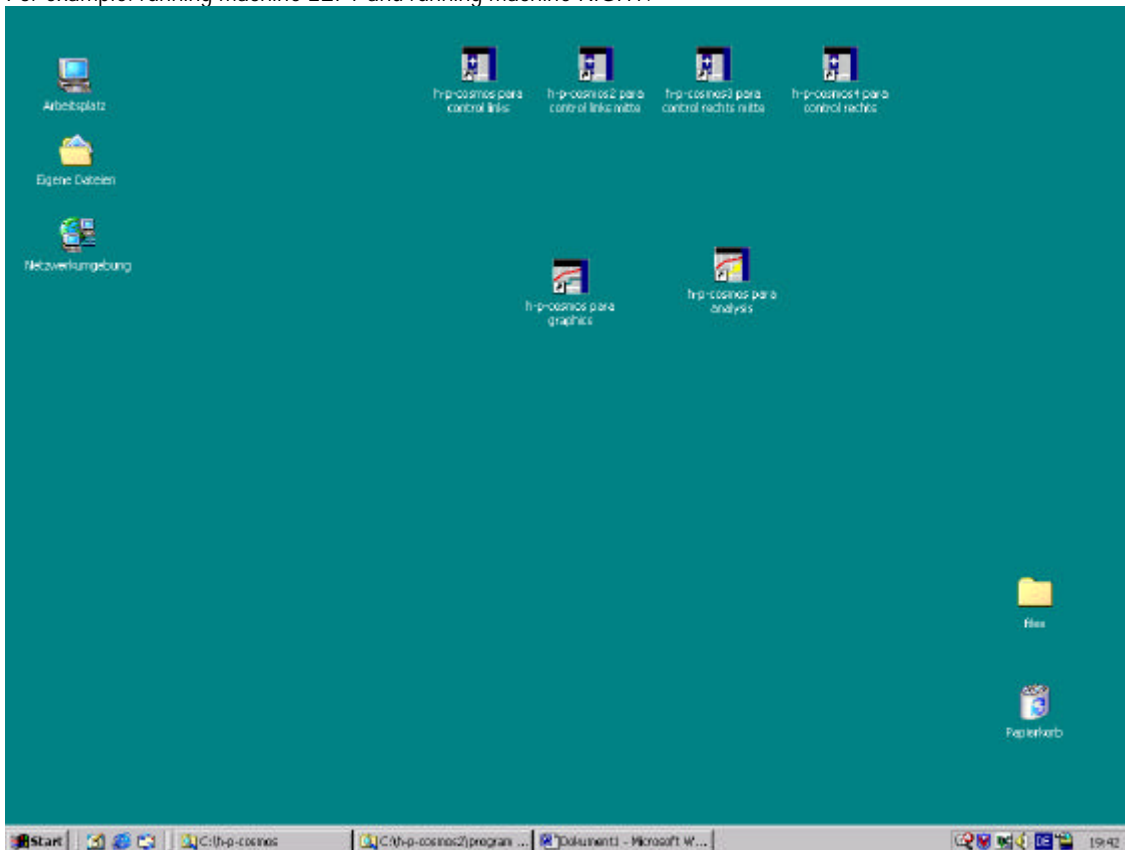
right mouse key

send to

Desktop

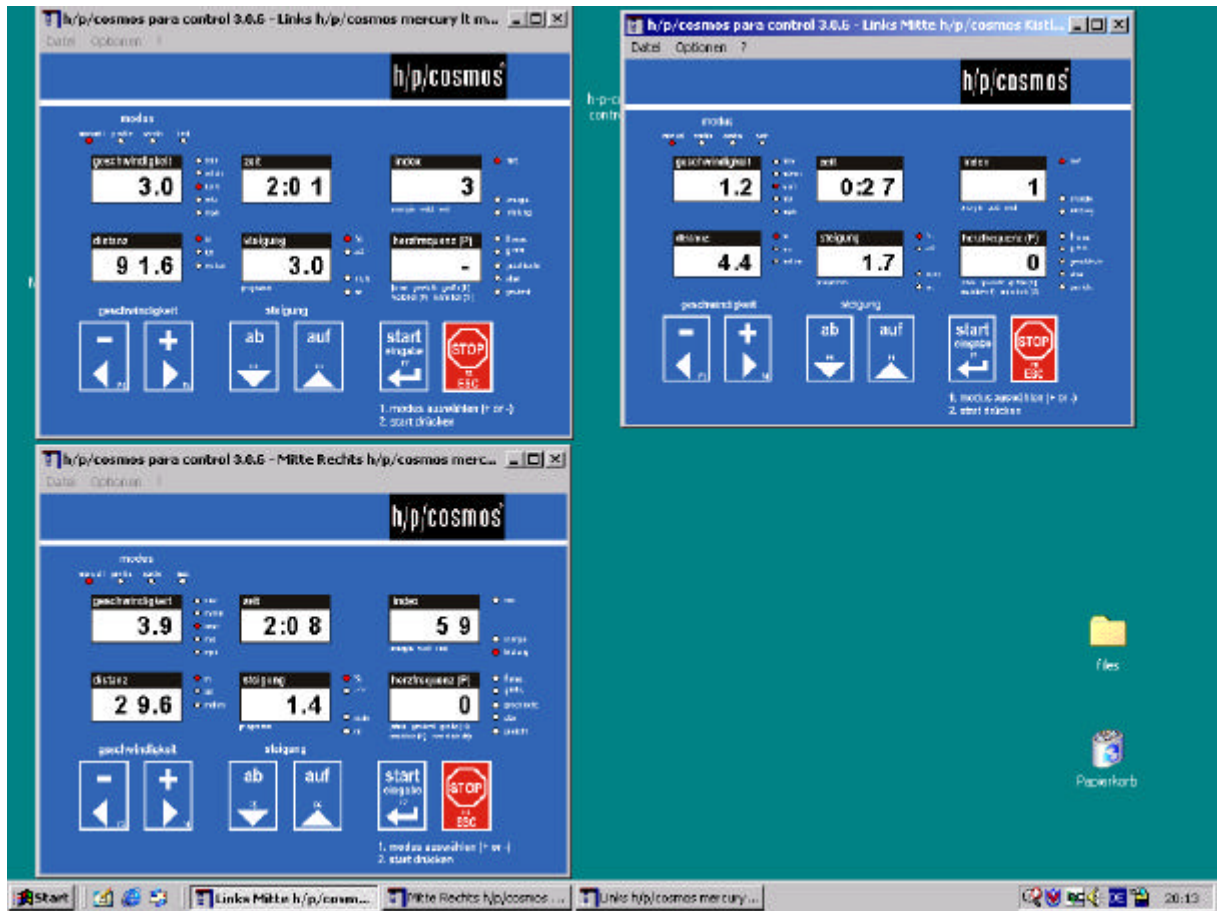


Continue with renaming the icons on then Desktop, so that the running machines can be identified easily.  
For example: running machine LEFT and running machine RIGHT.





Example: Operation of 3 running machines from 1 PC:



Consult the administrator for your PC in case of any questions.

## Options

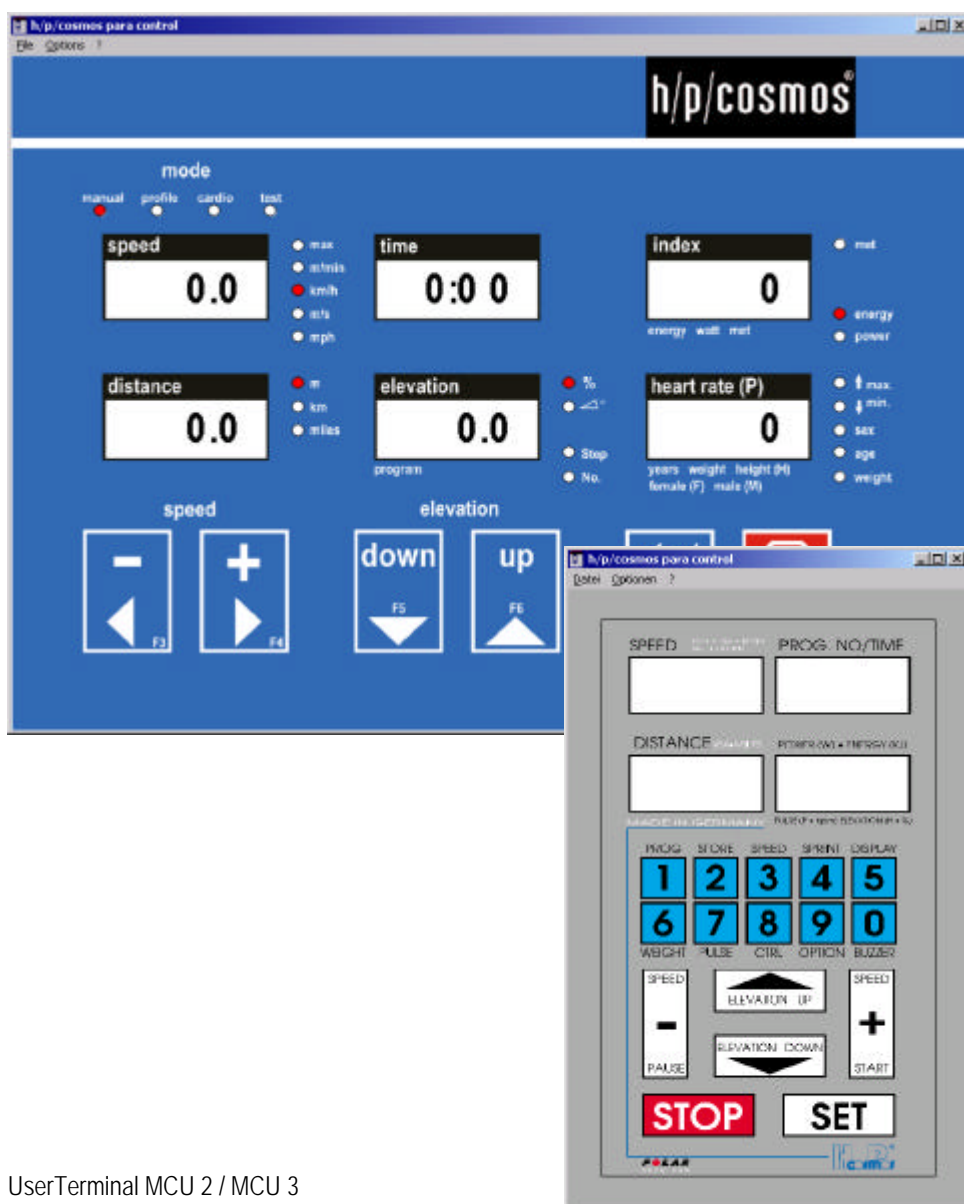
### A Select COM Port of the PC

After the installation of h/p/cosmos para control, start the software for the correct settings. First you have to select the correct RS 232 interface port of the PC (if it is not COM 1, which is the standard setting):

For this, please select "Options / Connection via / COM1 or COM2" (COM3 .... COM6 is possible if additional RS 232 interface hardware cards are installed in the PC).

Depending on the connected running machine / ladder ergometer one of the following display appears on the screen, if the connection works:

UserTerminal MCU4



UserTerminal MCU 2 / MCU 3

## B Enter device name

With Options / Device name, you can enter a free name for the controlled device. This name will be displayed in the blue window border of the software and also on the icon of the task bar..



### Device name for controlling one running machine / ladder ergometer

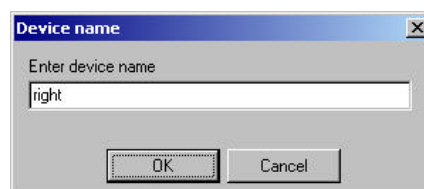
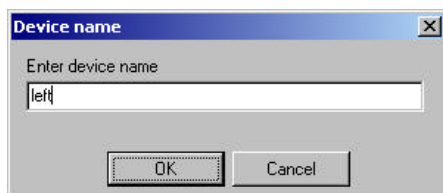
If you control just one device with the software h/p/cosmos para control, we recommend to use the name of the device which shall be controlled.

### Device names for parallel operation

In case the software h/p/cosmos para control will be used for controlling 2 or more running-machines or ladder-ergometers (possible up to 6 machines) the devices shall be named according to the position of the running-machine device in the room.

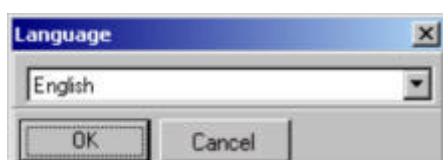
This will allow precisely identification and verification of the running-machine to the task-bar of the PC.

Examples



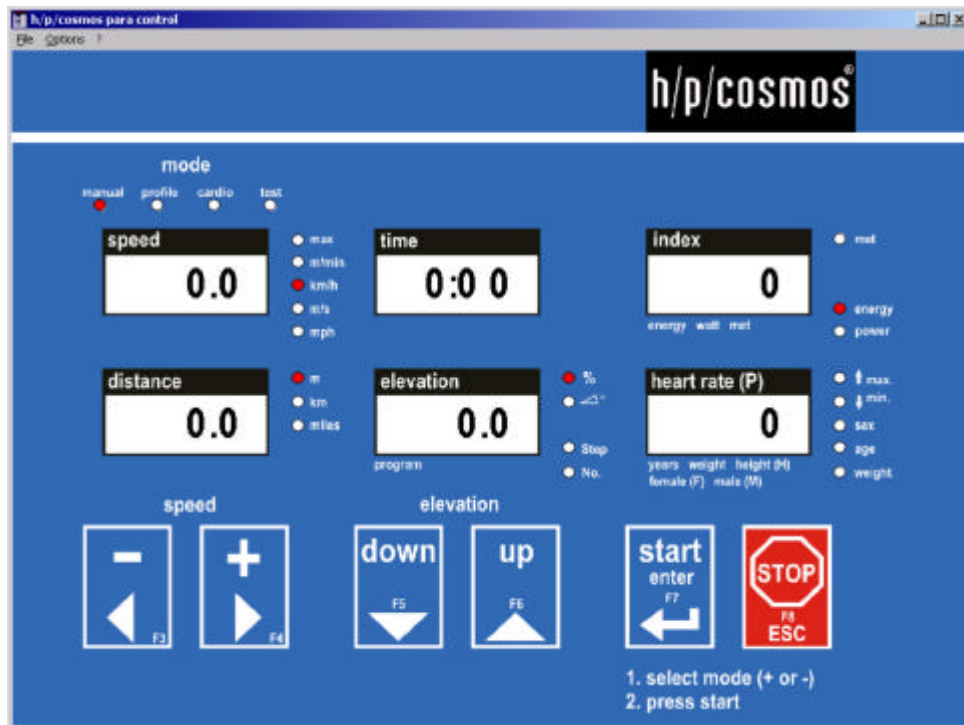
## C Choose language

Open menu "Options / Language (Sprache)" and select English or Deutsch (for German)



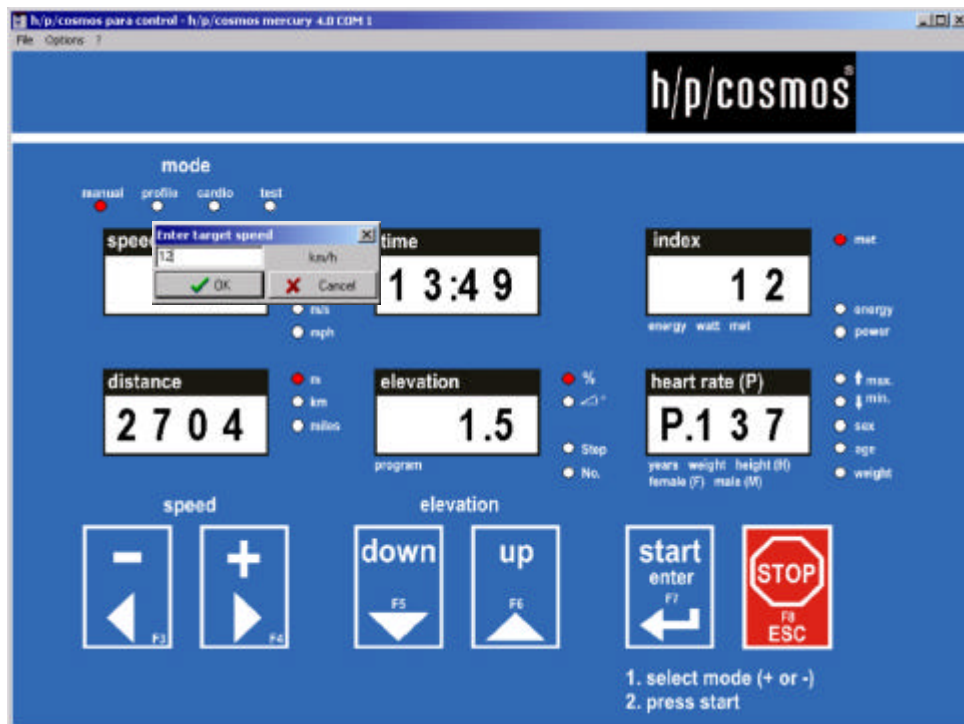
## Operation

### A Operation with running-machines with MCU4



There are 4 possible ways to press the buttons of h/p/cosmos para control software and to control the running-machine:

- use mouse of PC and click on virtual buttons START / STOP / Speed + / - Elevation UP / DOWN
- use PC keyboard: Enter (for START), ESC (for STOP), cursor arrow keys ← → (for Speed - / +) and ↓ ↑ (for Elevation DOWN / UP)
- use the functions keys of the PC keyboard: F3(-) F4(+), F5(DOWN) F6(UP) F7(START) F8(STOP). The function keys allow also to press 2 or 3 buttons to enter the optional functions (see running-machine manual)
- use right mouse button of PC and click on "speed" display. A new window will pop up next to the speed display. Enter final speed with numeric keys of the PC keyboard. Press Enter on the PC keyboard or use mouse and click on OK. Then the running belt of the running-machine will speed up or slow down to the entered "final speed" (= target speed)



- use right mouse button of PC and click on “elevation” display. A new window will pop up next to the elevation display
- enter final elevation with numeric keys of the PC keyboard. Press Enter on the PC keyboard or use mouse and click on OK



Then the elevation of the running-machine will increase or decrease elevation to the entered value (= target elevation)

#### A1 Configuration (optional functions) of the running-machine with h/p/cosmos para control

To enter the optional functions of the running machine (see also running-machine manual) use the functions keys of the PC keyboard and press following 3 function keys at the same time for 3 seconds: F3 F4 F8. Then you can select, check and change the optional function based on the description in the running-machine manual.

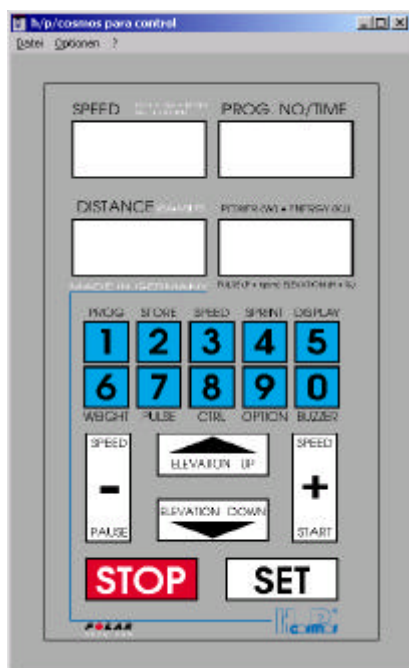
##### Caution

Some PCs do not allow to press 3 function keys on the PC keyboard simultaneously (some accept max. 2 function keys) and so it would not be possible to enter the optional functions.

In this case press F3 and F4 at the same time, keep the buttons pressed and then use the mouse and click on STOP button on the screen and also keep the mouse pressed for more than three seconds. This is the way how to enter the optional functions also with such PCs.

For detailed description of all functions please see the manual of the running machine.

## B Operation with running-machines with MCU2 or MCU3



There is just 1 way to press the buttons of h/p/cosmos para control software and to control the running-machine, use mouse of PC and click on virtual buttons START / STOP / SET / Speed + / - Elevation UP / DOWN and the virtual function keys (numeric keys) of the keyboard on your PC screen as shown above.

### Caution

In the standard setting (configuration) of the h/p/cosmos running-machines with MCU2 or MCU3 the key "SET" is deactivated.

So when the keys on the running-machine keyboard (not on the PC) are pressed, the running-machine will increase or decrease speed or elevation as long as the keys (Speed + / - Elevation UP / DOWN) on the running-machine is pressed.

It would be an option for the h/p/cosmos running-machines with MCU2 or MCU3 to tip speed and elevation keys just briefly, then let the speed and elevation automatically increase or decrease, and then to confirm the comfortable speed or elevation by pressing SET.

This is for advanced users only. For beginners it may be dangerous, because the speed can increase step by step to maximum speed, if the key SET was not pressed to confirm the value or to press STOP key for full stop the running-machine.

With the h/p/cosmos para control software and MCU2 or MCU3 it is impossible to have the mode "manual increase of speed / elevation". This means: Every time the speed or elevation key is pressed with the mouse of the PC, the speed and elevation will increase or decrease automatically towards maximum speed / elevation or minimum speed / elevation, until the present speed / elevation was conformed by pressing SET or the machines was stopped by pressing STOP.

Therefore it must only be used for observing the running-machine parameter and only by authorized and well instructed persons.

## C Solving problems

In case the error message appears



the PC could not find the running-machine and the communicate with the running machine does not work yet. Press OK to quit the error message. Exit h/p/cosmos para control software. Start the software again.

If this does not solve the problem, please follow the following steps::

- Another PC program is using the COM-port of the PC (e.g. COM1). Exit all other programs on the PC and start only h/p/cosmos para control
- The interface cable is not connected properly to COM1 (or the selected COM port) of the PC. Connect properly
- The serial interface cable RS 232 of your PC is defective or wrong. Check order number on the cable and compare with wiring diagram on page 1 contact your supplier of the PC. Use original h/p/cosmos interface cable with h/p/cosmos label only.
- The setting of the COM port on the PC does not match. Open menu "Options / Connect via >" must be changed to the right COM port where the cable is connected to the PC.
- The running-machine setup for the interface protocol is wrong: It must be OPTION 20 1 (for coscom protocol), see operation manual of the running-machine)
- The serial interface port RS 232 of your PC is defective, contact your PC supplier

## Contact

### Service

phone +49 / 86 69 / 86 42-21  
fax +49 / 86 69 / 86 42-49  
email [service@h-p-cosmos.com](mailto:service@h-p-cosmos.com)

### Sales

phone +49 / 86 69 / 86 42-0  
fax +49 / 86 69 / 86 42-49  
email [sales@h-p-cosmos.com](mailto:sales@h-p-cosmos.com)

### Address

[h/p/cosmos sports & medical gmbh](http://h-p-cosmos.com)

Am Sportplatz 8  
DE 83365 Nussdorf-Traunstein  
Germany

phone +49 / 86 69 / 86 42-0  
fax +49 / 86 69 / 86 42-49

[email@h-p-cosmos.com](mailto:email@h-p-cosmos.com)  
[www.h-p-cosmos.com](http://www.h-p-cosmos.com)