

SPEED ROLLER®

Parts and Service Manual

Model SR-103-HS



Made with Pride in the USA



Diversified Manufacturing, Incorporated
410 Ohio Street • Lockport, NY 14094 • USA
1.800.777.2936 • fax 1.716.434.1757

Speed Roller Index

	<u>Page</u>
Engine Clutch Assembly	4-5
Roller Assembly	6-7
Deck Assembly	8-10
Trailer assembly	11-13
Service	14
Oil change engine	14
Gear box oil level	14
Belt adjustment	15
Chain adjustment	16
Clutch adjustment	16
Periodic maintenance	18
Trouble shooting	18

Speed Roller

Ordering Parts

When ordering parts for your **Speed Roller**, please indicate model number as shown on the nameplate mounted on the deck of your **Speed Roller**. This information will help to expedite your parts quickly and accurately.

Our FAX line, 1.716.434.1757, is open 24-7 for your ordering and inquiry convenience. Feel free to use it anytime for prompt service.

Record of your **Speed Roller** Identification Numbers

Model Number _____

Serial Number _____

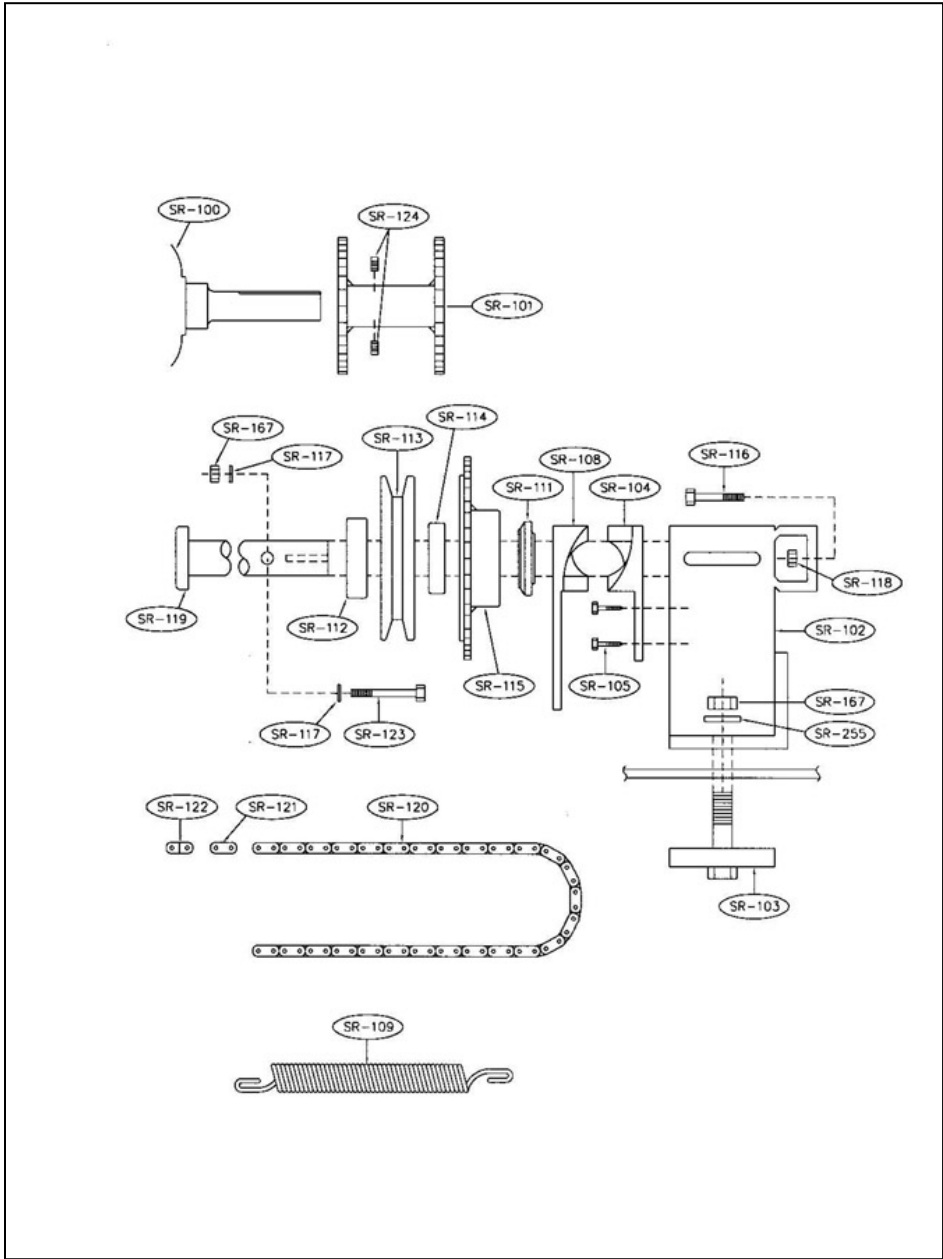
Speed Roller

Engine – Clutch Assembly

Part Number	Part Name	Quantity
SR-100	Engine	1
SR-101	Engine Sprocket	2
SR-102	Clutch Post	2
SR-103	Clutch Post clamp	2
SR-104	Clutch Ramp Fxd	2
SR-105	Clutch Ramp Bolt	4
SR-108	Clutch Ramp Mvbl	2
SR-109	Return Spring	2
SR-111	Thrust Bearing	2
SR-112	Pulley Bearing	2
SR-113	Pulley	2
SR-114	Sprocket Bearing	2
SR-115	Sprocket Lining Assy	2
SR-116	Clutch Adjust Bolt	2
SR-117	Flat Washer	2
SR-118	Nut	2
SR-119	Clutch Shaft	2
SR-120	Drive Chain	2
SR-121	Chain Cnct Link	2
SR-122	Chain Half Link	2
SR-123	Clutch Lock Bolt	2
SR-124	Set Screw	2
SR-167	Stop Nut	6
SR-205	Exhaust Elbow	1
SR-205A	Elbow Screw	2

Speed Roller

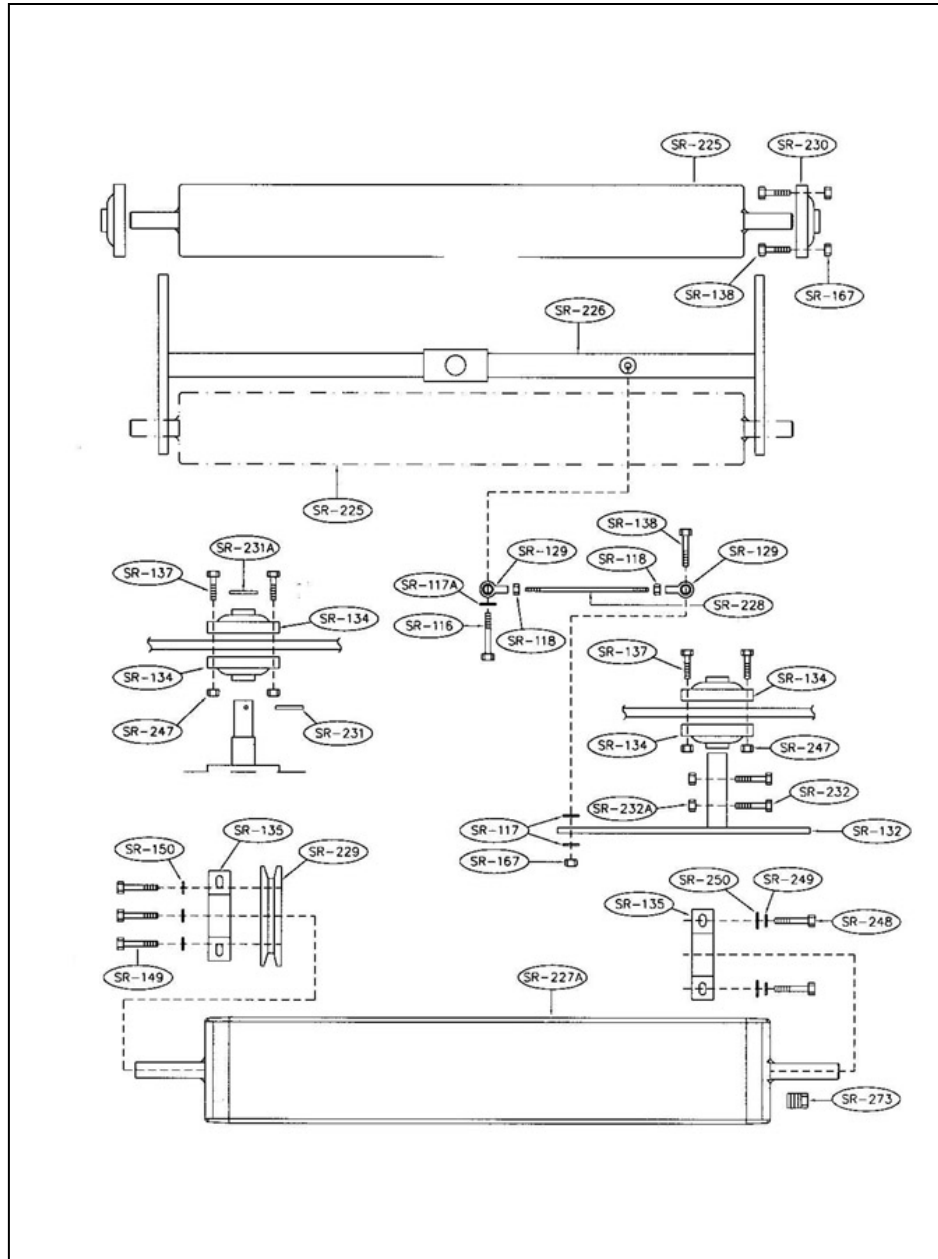
Engine - Clutch Assembly



Speed Roller Roller Assembly

Part Number	Part Name	Quantity
SR-116	Strng Trolley Bolt	1
SR-117	Washer	2
SR-117A	Lock washer	1
SR-118	Nut	2
SR-129	Tie Rod End	2
SR-132	Steering Arm	1
SR-134	Bearing, Steering	4
SR-135	Bearing, D. Roller	2
SR-137	Bolt	8
SR-138	Bolt	9
SR-138	Strng Arm Bolt	1
SR-141	Bearing	6
SR-149	Dr. Pulley Bolt	3
SR-150	Flat Washer	3
SR-167	Lock Nut	9
SR-225	Steering Roller	2
SR-226	Steering Trolley	1
SR227A	Drive Roller	1
SR-228	Tie Rod Shaft	1
SR-229	Pulley	1
SR-230	Bearing, S. Roller	4
SR-231	Roll Pin	1
SR-232	Steering Bolt	2
SR-232A	Nut	2
SR-247	Lock Nut, Strg Brg	8
SR-248	Brng. Bolt Drv. Roll	4
SR-249	Lock Washer, D. Roller	4
SR-250	Washer, D. Roller	4
SR-253	Roll Pin	6
SR-273	Drive Roller Plug	1

Speed Roller Roller Assembly



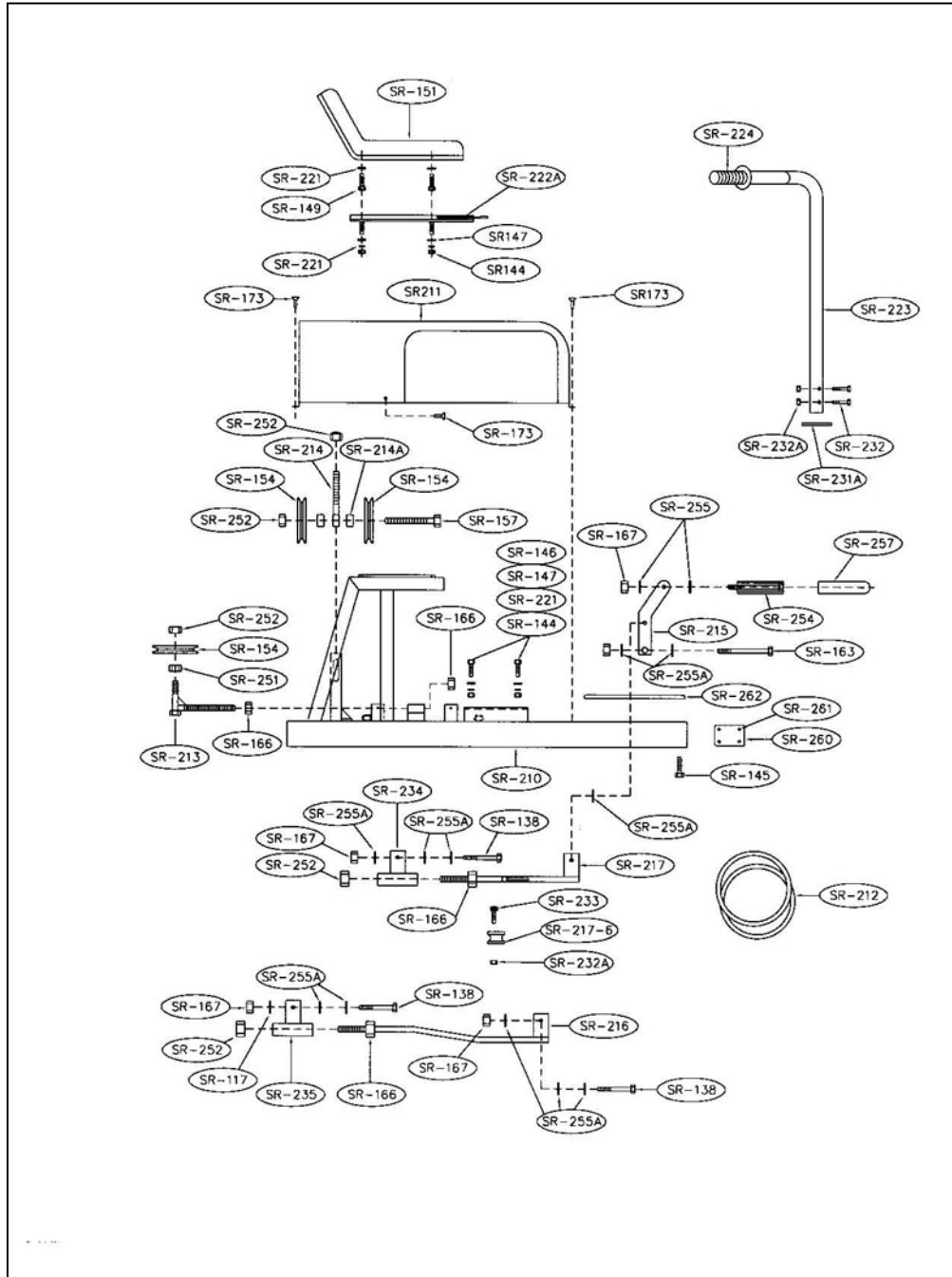
Speed Roller Deck Assembly

Part Number	Part Name	Quantity
SR-117	Washer, 3/8"	12
SR-138	Bolt	4
SR-149	Bolt	4
SR-151A	Seat	1
SR-154	Idler Pulley	3
SR-157	Idler Mount Bolt	1
SR-158	Foot Pedal	2
SR-163	Linkage Bolt	1
SR-166	Nut, 5/8" NC	6
SR-167	Lock Nut	4
SR-173	Screw	2
SR-173A	Bolt	6
SR-210	Main Deck	1
SR-211	Cover Guard	1
SR-212	Belt	1
SR-213	Belt Adjuster	1
SR-214	Pulley Adjuster	1
SR-215	Pedal Bracket	2
SR-216	Linkage (Long)	1
SR-217	Linkage (Short)	1
SR-217-6	R.H. Pedal Guide	
SR-221	Lock Washer	4
SR-222A	Adjuster, Seat (set)	1
SR-223	Handle Bar Assy	1
SR-224	Handle Bar Grip	2
SR-232	Hex HD Bolts	2
SR-232A	Nut, 1/4"	20
SR-233	Screw, Flat Head 1/4"	20
SR-233A	Lock Washer, Tooth	
SR-234	Clutch Oprtng Link	1
SR-235	Clutch Oprtng Link	1
SR-247	Hex Nut	2
SR-251	Nut Jam	2

SR-252	Nut, Elastic	2
SR-254	Pedal Bolt	2
SR-255	Washer	2
SR-257	Pedal Rubber	2
SR-258	Name Plate Screw	4
SR-260	Deck Bumpers	4
SR-261	Deck Bumper Rvt.	32
SR-262	Step Pad	1
SR-263	Speed Roller Decal	2
SR-264	Stainless Decal	2
SR-265	Trailer Warning Decal	2
SR-266	Hands & Feet Decal	2
SR-267	Cover Decal	1
SR-268	Shut Off Decal	1
SR-269	Careful Decal	1
SR-270	Name Plate	1
SR-271	Operator's Manual	1
SR-272	Parts / Service Manual	1



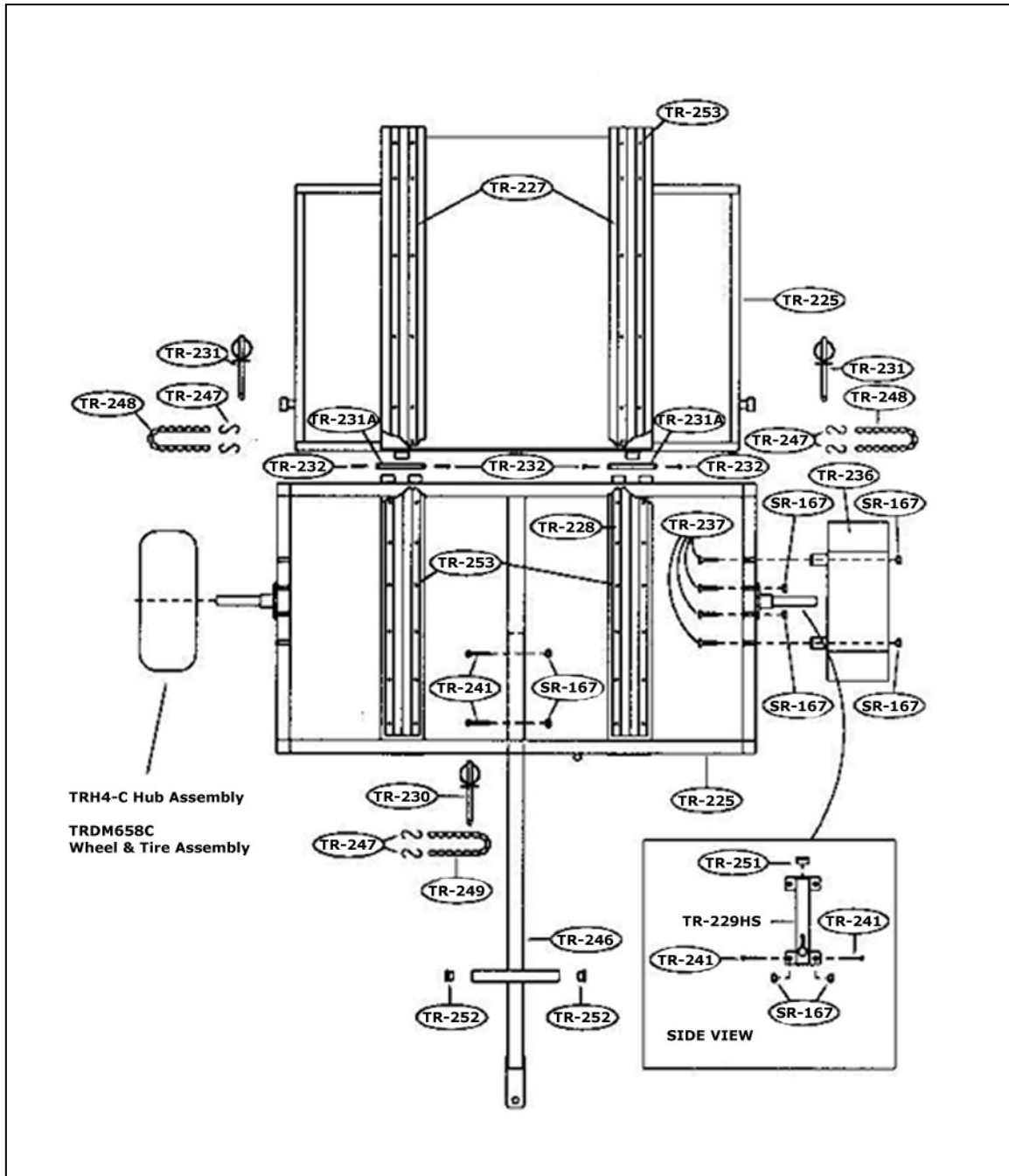
Speed Roller Deck Assembly



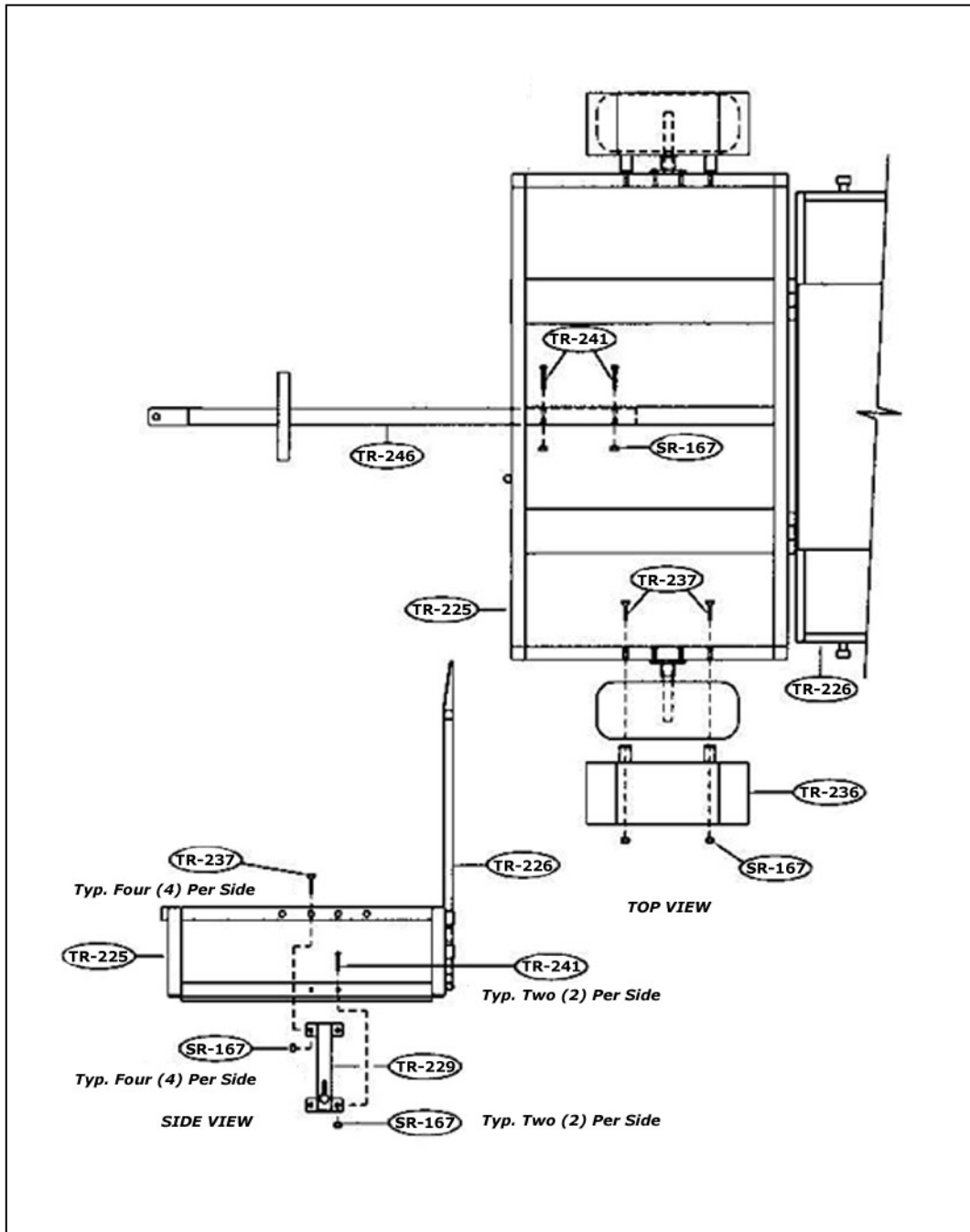
Speed Roller Trailer Assembly

Part Number	Part Name	Quantity
SR-167	Nut, 3/8 NF Lock	14
TR-225	Trailer Frame	1
TR-226	Tailgate	1
TR-227	Tailgate Traction Strip	2
TR-228	Frame Traction Strip	2
TR-229HS	Axle Assembly	2
TR-230	Roller Lock Pin	1
TR-231	Tailgate Pin	2
TR-231A	Hinge Pin	2
TR-232	Cotter Pin	4
TR-236	Fender	2
TR-237	Flat Head Bolt	8
TR-241	Axle Bolt (Lower)	4
TR-241	Hitch Bolt	2
TRDM658C	Wheel Assembly	2
TRH4-C	Hub Assembly	2
TR-246	Hitch	1
TR-247	'S' Hook	6
TR-248	Tailgate Pin Change	2
TR-249	Mach. Pin Chain	1
TR-251	Axle Cap	2
TR-252	Hitch Handle Cap	2
TR-253	Rivet, Traction Pad	54

Speed Roller Trailer Assembly

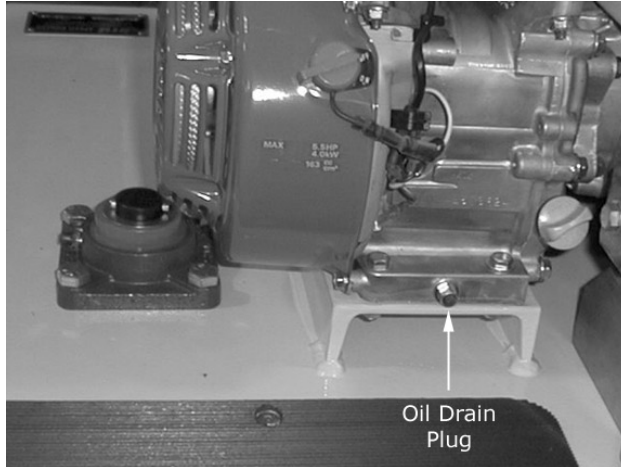


Speed Roller Trailer Assembly



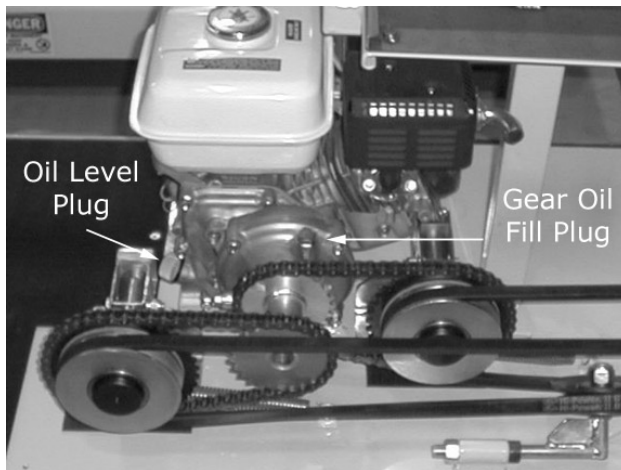
Speed Roller Service

Oil Change – Engine



- Switch off Engine before attempting oil change.
 - Change oil when engine is warm.
 - Place oil catch container under oil drain hole. Remove drain plug (10mm wrench). After draining, replace drain plug and fill with 0.6 liters of 10W-30 motor oil.
- NOTE- If engine oil level is low, engine may stall when changing directions

Gear Box Oil Change



- Switch off engine before removing cover guard for servicing.
 - Remove oil filler plug and oil level plug.
 - fill until oil runs out of the oil level plug hole.
- NOTE - Refer to Honda engine owners manual.

Speed Roller Service

Belt Adjustment

If belt is too loose it will slip under load and decrease performance. Belt will normally require 1 or 2 adjustments after its first hours of use.

- Remove cover guard
- Belt tension should allow only 2 inches of upward movement at point A.
- To tighten belt, loosen adjuster lock nut then tighten the belt tightener nut to required tension.
- Relock by tightening the adjuster lock nut.



Speed Roller Service

Chain Adjustment

- Remove cover guard.
- Chains should have ½" free play up and down.
- Loosen 'V' belt before chain adjustment.
- To adjust chains, loosen clamp nuts "D" and slide clutch post in required direction. Then retighten clamp nuts.
- Retighten 'V' belt per belt adjustment procedure.

NOTE: Front chain is tighter than rear in free state. Front chain will loosen as rear chain tightens when adjusting the belt.

Clutch Adjustment

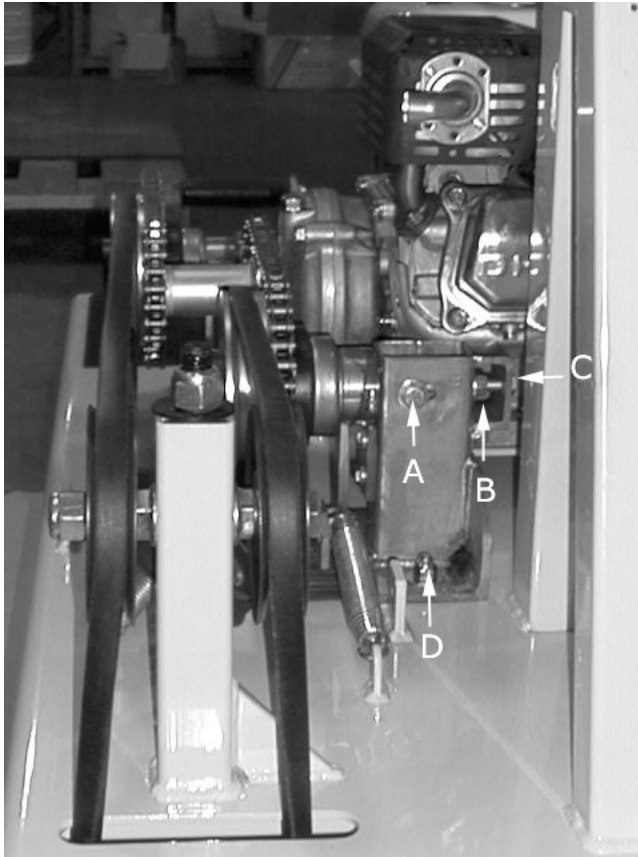
- Clutch operates by pressure on clutch sprocket lining and belt pulley. The clutch ramp, when rotated by pedal linkage, applies pressure to the clutch for engagement. If pedal travel becomes excessive, insufficient pressure may be exerted for proper clutch engagement. When pedal is depressed slightly (1"), the gap between the clutch ramps should be 1/8" to 3/16". See next page.

- To take up excessive movement, loosen clamp bolt "A".
- Loosen locking nut "B"
- Rotate bolt "C" in clockwise direction
- Retighten locking nut "B"
- Retighten clamp bolt "A"

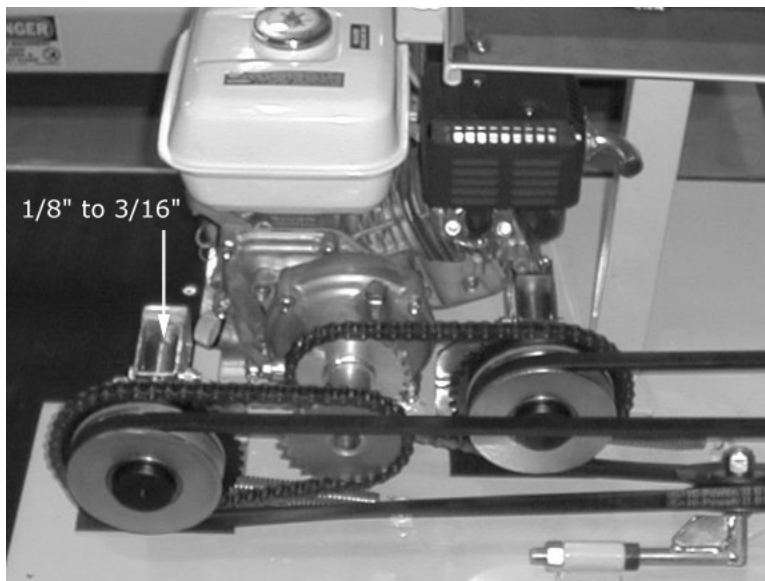
NOTE: Excessive pressure on clutch may cause machine to drive in either direction by itself. If clutches are too tight, machine may be difficult to move by hand with engine off.

-SEE ILLUSTRATIONS ON PAGE 17-





"A" – Clamp bolt
"B" – Locking nut
"C" – Bolt
"D" – Clamp nut



Clutch Adjustment:

When pedal is depressed, the gap between the clutch ramps should be 1/8" to 3/16". Clutches should move freely when not engaged. To verify this, loosen belt and rotate pulleys by hand.

Speed Roller Service

Periodic Maintenance

- Engine oil should be changed after 20 hours of use
- Chains should have light coating of grease
- Belt tension checked
- Spark plugs cleaned
- Air filter cleaned
- Grease bearings

Note: Add grease through the zerk fittings using a good grade of #2 lithium base grease. Do not over grease. Add a little grease until it shows a little bit at the seals. Rotate bearing to distribute grease.

TROUBLE SHOOTING:

<u>Symptom</u>	<u>Probable Cause</u>	<u>Solution</u>
Engine Runs Rough	Choke on / spark plug dirty / fuel mixture incorrect	Release choke / Clean or replace plugs / Refer to engine manual
Engine Stall when changing direction	Oil level low	Fill engine oil, pg. 13 / Refer to engine manual
Pedal movement excessive / Roller not driving	Clutch is out of adjustment	Refer to page 16
Clutch holding but belt slipping	Belt is too loose / Moisture on belt	Refer to page 15

Speed Roller

Parts and Service Manual

Made in USA

Manufactured by:



Diversified Manufacturing, Incorporated
410 Ohio Street • Lockport, NY 14094 • USA
1.800.777.2936 • fax 1.716.434.1757