

Installation Instructions

Swing arm bearing replacement.

Note: These instructions are very general and you should have a service manual for your particular model of bike to get a better understanding of your particular setup and to get factory recommended torque levels and specifications.

A



- 1) Clean and disassemble.
 - a) Remove the swing arm and linkage from the bike.
 - b) Clean the swing arm.
 - c) Remove the old seals bushings and pins.
 - d) Clean the grime and rust from the bearing bores.
 - e) Press out the old bearings. Note how the bearings are spaced in the swing arm bore. (FIG A)

B



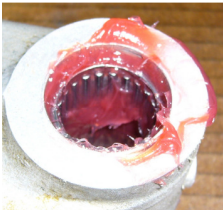
- 2) Inspect the bearing bores.
 - a) Clean the bearing bores and inspect them for damage.
 - b) Make sure that there aren't any burs present that will hang up the new bearings.
 - c) In some cases some of the original bushings will need to be reused. In the case of this 1987 Cr250 the inner steel bushings and the dust seal caps will be reused. Clean the reused parts thoroughly. (FIG B)

C



- 3) Reassemble.
 - a) Press in the new bearings rounded end first. Press the bearings in from the outside. (FIG C)
 - b) For bearing orientation see (Fig G).
 - c) Grease the bearings thoroughly. (FIG D)
 - d) Grease the sealing lip of the seals. Install the bushings pins and seals.(FIG F)
 - e) If the bike has thrust bearings sandwich the PTFE washer between the steel washers. When reassembling the swing arm place the thrust washer assembly so that the PTFE surface faces the outside of the motorcycle. (FIG F)

D



- 4) Before reinstallation into bike.
 - a) Check all bolts and bike frame for damage.
 - b) The frame could be weakened if there are cracks or if the mounting holes are egged out.
 - c) Replace the swing arm bolt if it is obviously worn if it exceeds factory recommended run out or is stretched.
 - d) Torque all bolts to factory recommended levels during reassembly.
 - e) **INSTALL ALL BALLS RACING STICKER.**

E



- 5) Tips
 - a) If you are not going to reassemble the bike right away use zip ties to hold the bushings pins and seals in place.
 - b) To make your bearings last longer. Avoid pressure washing around the swing arm seals for extended periods of time. Pressure washers will push water right around seals causing premature rusting of the bearings.

F



G

